

ISEKI

Parts Catalogue



Model

TX2160

F-E41A

Type
of Machine

TRACTOR

Special use only for TX2160,F-E41A

In this parts book you can find the parts to be exclusively used only for TX2160, type F-E41A. For any other parts not found in this book, please refer to the MODEL FE42 which is listed in the parts book No.1410-098-014-00.

1. Explanation for head paragraph

KEY	PART CODE	DESCRIPTION	QTY	TYPE OF MODEL				I T C	C O L	G R P	REMARKS
				TF15	TF17	TF19					
126	1614-508-200-00	FILTER(SUCTION) ASSY	1		.				4E		
127	V721-103-103-50	O-RING	1		.						
128	1614-508-260-00	FILTER(SUCTION) ASSY	1		.	981- -1799					
129	1614-508-262-00	FILTER(LH)	1		.						FIG. 164
		ASSY	1		.				4E	A	
			1		.	1- -1999		3			

- ① KEY shows the location of parts diagramed in the illustration.
- ② Parts numbers begin with `V` and `W` are standard parts of the market.
- ③ `LH` and `RH` on the parts name are described against the moving direction of the machine or are described on the condition how to install parts on the machines.
- ④ QTY shows the number of parts to be used for one unit of machine.
 `M` is indicated for parts supplied by a meter long.
 `ℓ` is indicated for parts supplied by liter.
 `AR` is indicated for parts need to be adjusted or regulated.
- ⑤ The following symbol classifies parts to be used for machines.
 `*` means standard parts.
 `T` shows that the parts can be installed as optional parts.
 `R` shows that the parts can be used as applicable parts to replace originally equipped parts.
- ⑥ Serial number : upper row shows the serial number for the first product and lower row for the last product.

Example : Serial no. 1 through to serial no. 1999.

⑦ ITC : Interchangeability

1 OLD ← NEW

New parts can be used in place of the old parts.

2 OLD → NEW

Old parts can be used in place of the new parts.

3 OLD ↔ NEW

Old parts and new parts can not be replaced each other.

⑧ COL : Color code

Color is signified with color code number for colored parts.

Please see the color list shown in this page.

⑨ GRP : Parts shown in this column can be replaced by SET parts.

Exsample : Parts marked (A) can be replaced by parts marked (B), and (D) for (C), so the rest follow in the same alphabetical order.

⑩ Remarks

* Other maker's part code number is shown in this column.

* When Fig. No. is shown in the Remark column of SET parts or ASSY parts, each of their component parts are listed in said Fig. No.

2. Color :

The following colors are used for color parts.

COLOR CODE	COLOR	SPRAY TYPE CODE NUMBER	PAINTS 4K DRUM	PAINTS 16K DRUM
4 F	COSMO BLUE	1300-952-001-10	1300-952-003-00	1300-952-004-00
6 F	FLASH WHITE	1300-953-001-10	1300-953-003-00	1300-953-004-00
7 F	MIRROR BLACK	1300-954-001-10	1300-954-003-00	1300-954-004-00

NOTE : Color code is signified only for the parts assigned by the maker as color parts.

3. Parts Order

- 1) Parts numbers listed in the parts catalogue are all registered in "ISEKI on-line computer".
- 2) When you order parts, please make sure of correct numbers.
- 3) When substitute parts is available, the part number ordered will be automatically turned to a new part number.
- 4) Please be sure to use "ISEKI GENUINE PARTS".

Any other similar parts other than ISEKI parts when used may cause a trouble that makes us unable to repair or guarantee the warrant.

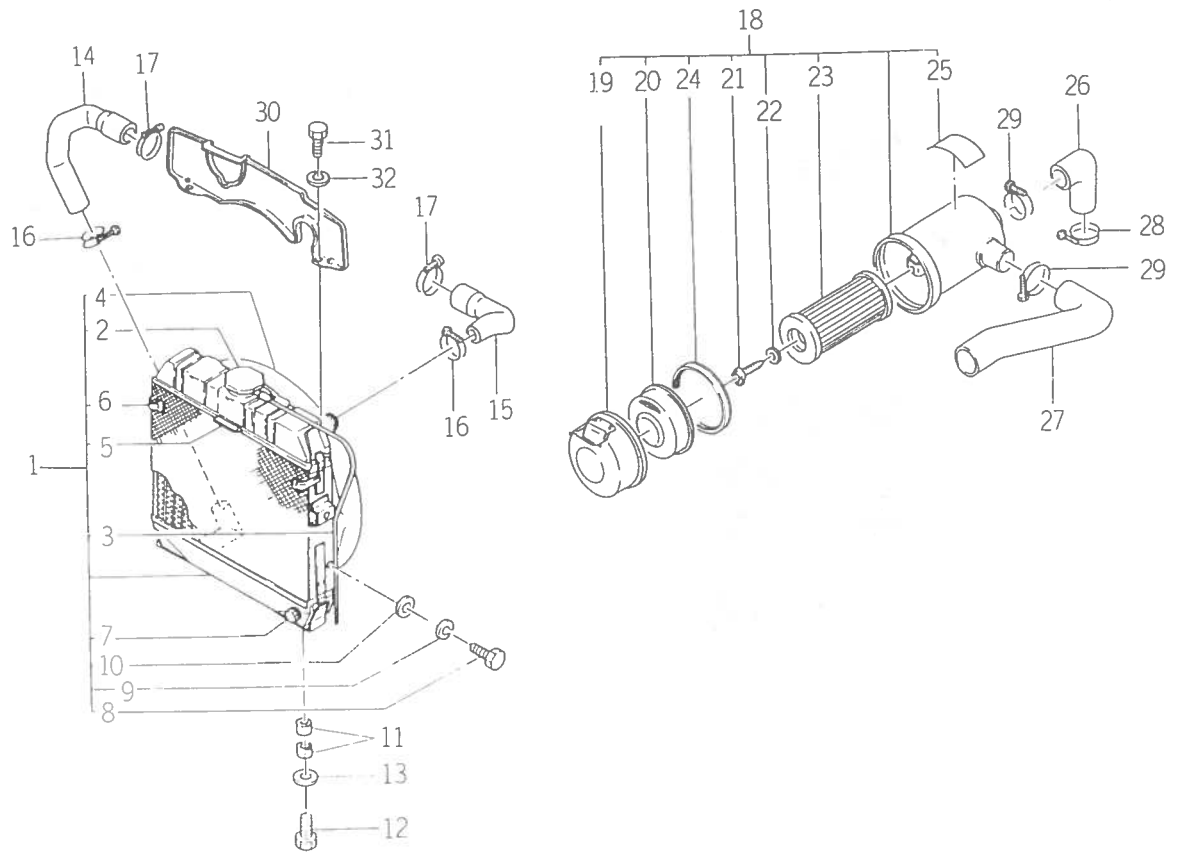
CONTENTS

TX2160F-E41A

AIR CLEANER AND RADIATOR SYSTEM	Fig. 18A
MUFFLER SYSTEM	Fig. 19A
BONNET AND FRAME SYSTEM	Fig. 20B
BRAKE ROD SYSTEM	Fig. 31D
TRANSMISSION CASE SYSTEM	Fig. 34E
REAR AXLE SYSTEM	Fig. 51A
TIRE	Fig. 52B
SEAT AND FENDER SYSTEM	Fig. 63B
ELECTRICAL SYSTEM (A)	Fig. 64C
ELECTRICAL SYSTEM (B)	Fig. 65B
ELECTRICAL SYSTEM (C)	Fig. 65C
WEIGHT	Fig. 66A
THREE POINT SYSTEM	Fig. 67C
TOOLS AND TRAILER HITCH SYSTEM	Fig. 71B



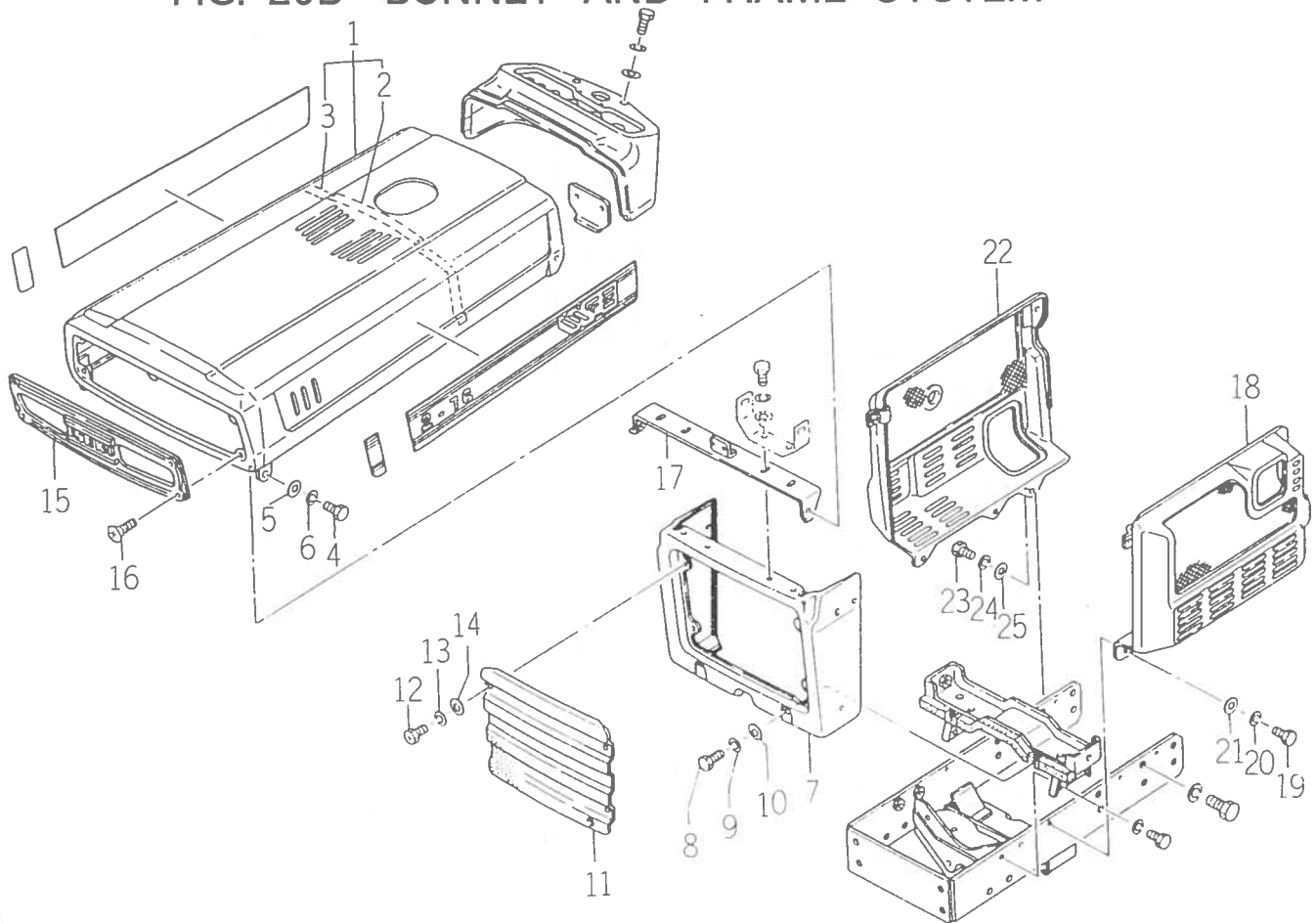
FIG. 18A AIR CLEANER AND RADIATOR SYSTEM



1435-102A

KEY	PART CODE	DESCRIPTION	QTY	TYPE OF MODEL		I T C	C O L	G R P	REMARKS
				FE41A					
1	1434 - 101 - 210 - 00	RADIATOR ASSY	1	*					
2	1434 - 101 - 212 - 00	CAP	1	*					
3	1434 - 101 - 213 - 00	PIPE, VINYL	1	*					
4	1434 - 101 - 214 - 00	GUARD, FAN	1	*					
5	1434 - 101 - 215 - 00	PROTECTOR, FAN	1	*					
6	1427 - 101 - 006 - 00	SPRING, SET	2	*					
7	1434 - 101 - 216 - 00	COCK, WATER	1	*					
8	V200 - 260 - 601 - 60	BOLT/M 6X 16	4	*					
9	V401 - 160 - 006 - 00	WASHER SP/M 6	4	*					
10	V411 - 260 - 006 - 00	WASHER PL/M 6	4	*					
11	1427 - 101 - 007 - 00	CUSHION, RADIATOR	4	*					
12	V201 - 260 - 803 - 50	BOLT/M 8X 35	2	*					
13	V411 - 260 - 008 - 00	WASHER PL/M 8	2	*					
14	1434 - 101 - 001 - 00	HOSE, LW/RUBBER	1	*					
15	1434 - 101 - 002 - 00	HOSE, UP/RUBBER	1	*					
16	1427 - 101 - 011 - 00	CLAMP/35	2	*					
17	1575 - 102 - 007 - 00	CLAMP/44	2	*					
18	1434 - 102 - 210 - 10	CLEANER, AIR ASSY	1	*					
19	1434 - 101 - 272 - 10	PAN, DUST	1	*					
20	1427 - 101 - 283 - 00	BAFFLE ASSY	1	*					
21	1434 - 101 - 273 - 00	BOLT, WING	1	*					
22	1427 - 101 - 286 - 00	WASHER, SEAL	1	*					
23	1427 - 101 - 284 - 00	ELEMENT	1	*					
24	1427 - 101 - 288 - 00	GASKET	1	*					
25	1427 - 101 - 287 - 00	MARK, HANDLING	1	*					

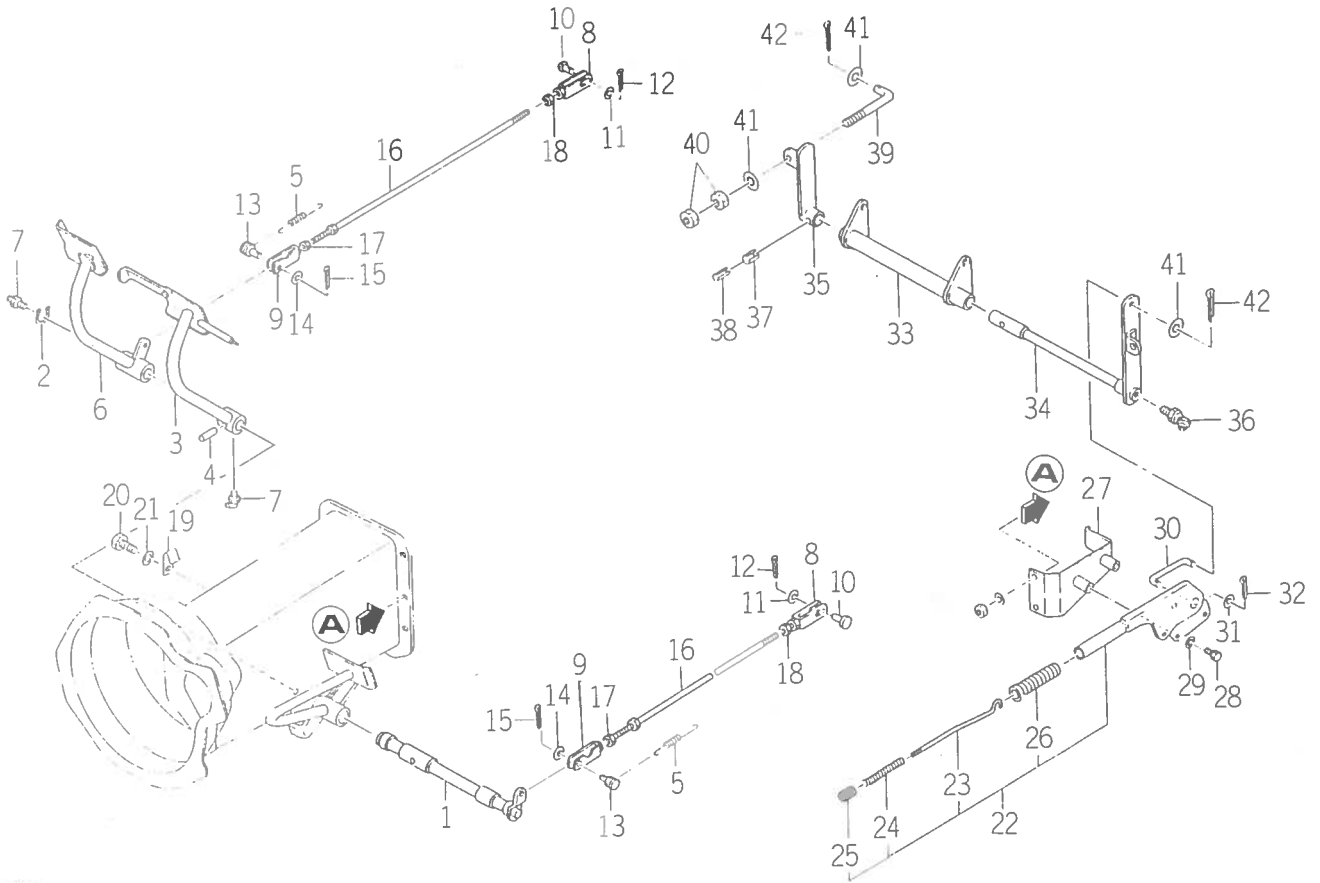
FIG. 20B BONNET AND FRAME SYSTEM



1435-601H

KEY	PART CODE	DESCRIPTION	QTY	TYPE OF MODEL		I T C	C O L	G R P	REMARKS
				FE41A					
1	1434 - 601 - 250 - 00	BONNET COMP	1	*					
2	1427 - 111 - 244 - 10	SEAL/ (30X20X215)	1	*					
3	1427 - 601 - 206 - 00	SEAL/ (30X15X170)	2	*					
4	1434 - 601 - 001 - 10	BOLT, HINGE	2	*					
5	1427 - 601 - 002 - 00	CUSHION/RUBBER	2	*					
6	1427 - 601 - 003 - 00	WASHER/15X24X2	2	*					
7	1435 - 601 - 200 - 10	COVER, UNDER COMP	1	*					
8	V201 - 260 - 801 - 60	BOLT/M 8X 16	8	*					
9	V401 - 160 - 008 - 00	WASHER SP/M 8	8	*					
10	V411 - 260 - 008 - 00	WASHER PL/M 8	8	*					
11	1435 - 601 - 005 - 00	GRILL	1	*					
12	1427 - 601 - 005 - 00	BOLT	4	*					
13	V401 - 160 - 006 - 00	WASHER SP/M 6	4	*					
14	V411 - 260 - 006 - 00	WASHER PL/M 6	4	*					
15	1427 - 605 - 001 - 00	GRILLE, LIGHT	1	*					
16	1480 - 603 - 001 - 00	SCREW/M6X16	5	*					
17	1434 - 601 - 220 - 00	PLATE, HINGE	1	*					
18	1434 - 601 - 230 - 20	COVER, SIDE LH	1	*					
19	V201 - 260 - 801 - 60	BOLT/M 8X 16	5	*					
20	V401 - 160 - 008 - 00	WASHER SP/M 8	5	*					
21	V411 - 260 - 008 - 00	WASHER PL/M 8	5	*					
22	1434 - 601 - 240 - 00	COVER, SIDE RH	1	*					
23	V201 - 260 - 801 - 60	BOLT/M08X 16	5	*					
24	V401 - 160 - 008 - 00	WASHER SP/M 8	5	*					
25	V411 - 260 - 008 - 00	WASHER PL/M 8	5	*					

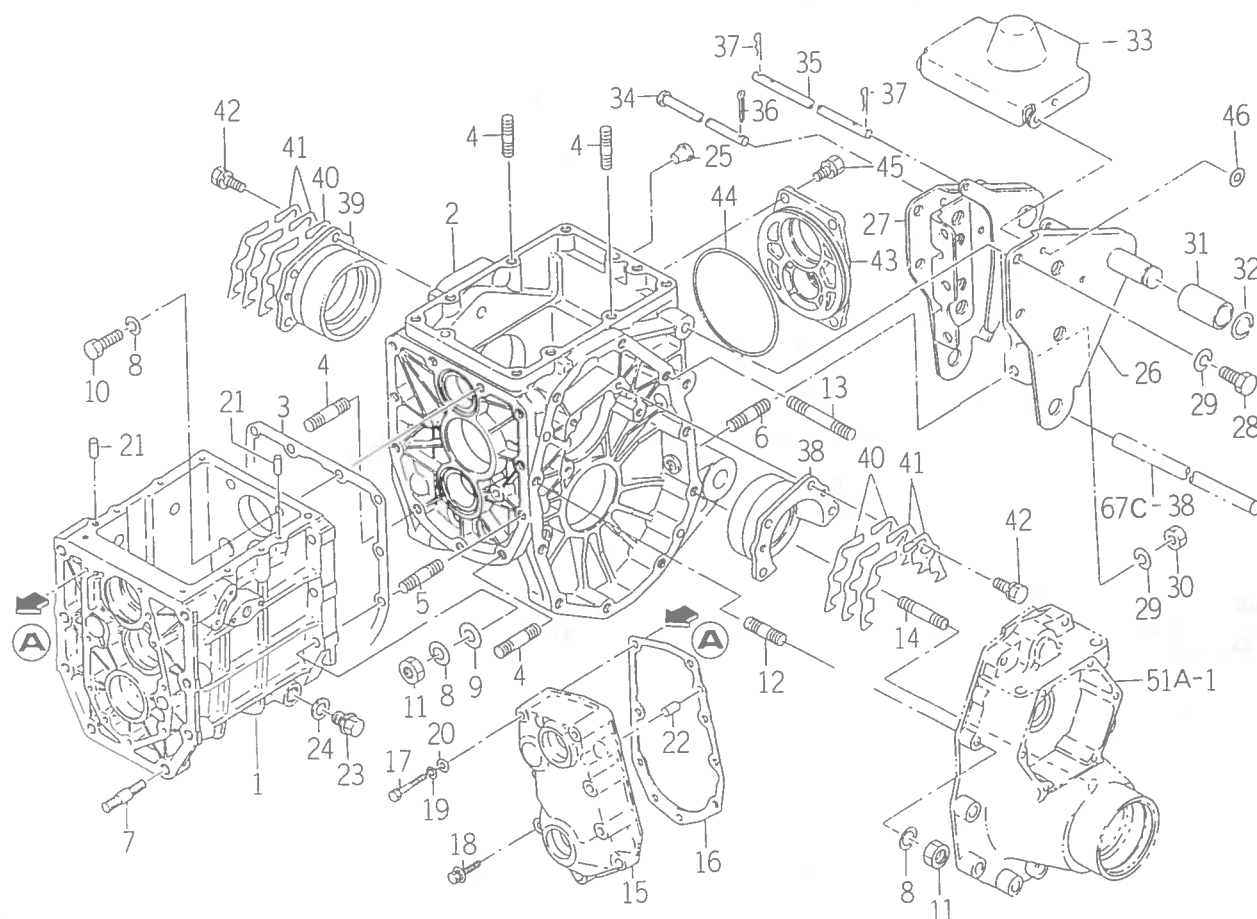
FIG. 31D BRAKE ROD SYSTEM



1101-512A

KEY	PART CODE	DESCRIPTION	QTY	TYPE OF MODEL		I T C	C O L	G R P	REMARKS
				FE41A					
1	1434 - 312 - 200 - 00	SHAFT, BRAKE	1	*					
2	V704 - 140 - 022 - 00	RING, SNAP/22 C	1	*					
3	1434 - 312 - 210 - 00	PEDAL, BRAKE LH	1	*					
4	V530 - 240 - 803 - 60	PIN 8X36	1	*					
5	1403 - 312 - 003 - 00	SPRING, PARKING BRAKE	2	*					
6	1434 - 312 - 220 - 00	PEDAL, BRAKE RH	1	*					
7	V763 - 400 - 000 - 00	NIPPLE, GREASE/ 1/8	2	*					
8	1415 - 312 - 500 - 00	YOKE, LH	2	*					
9	1434 - 312 - 330 - 00	YOKE, RH	2	*					
10	1404 - 312 - 006 - 00	PIN, YOKE A	2	*					
11	V411 - 260 - 008 - 00	WASHER PL/M08	2	*					
12	V500 - 162 - 002 - 00	PIN, SPLIT/2.0X20	2	*					
13	1404 - 312 - 005 - 00	PIN, YOKE B	2	*					
14	V411 - 260 - 008 - 00	WASHER PL/M 8	2	*					
15	V500 - 162 - 002 - 00	PIN, SPLIT/2.0X20	2	*					
16	1434 - 312 - 230 - 00	ROD, BRAKE	2	*					
17	1401 - 122 - 005 - 00	NUT, LH THREAD/M8	2	*					
18	V305 - 260 - 008 - 00	NUT/M, 8	2	*					
19	1434 - 312 - 001 - 00	CLAMP, HARNESS	1	*					
20	V201 - 261 - 001 - 60	BOLT/M10X 16	1	*					
21	V401 - 160 - 010 - 00	WASHER SP/M10	1	*					
22	1427 - 313 - 200 - 00	BRAKE, PARKING ASSY	1	*					
23	1427 - 313 - 204 - 00	ROD	1	*					
24	1427 - 313 - 205 - 00	SPRING	1	*					
25	1427 - 313 - 206 - 00	BOTTON	1	*					

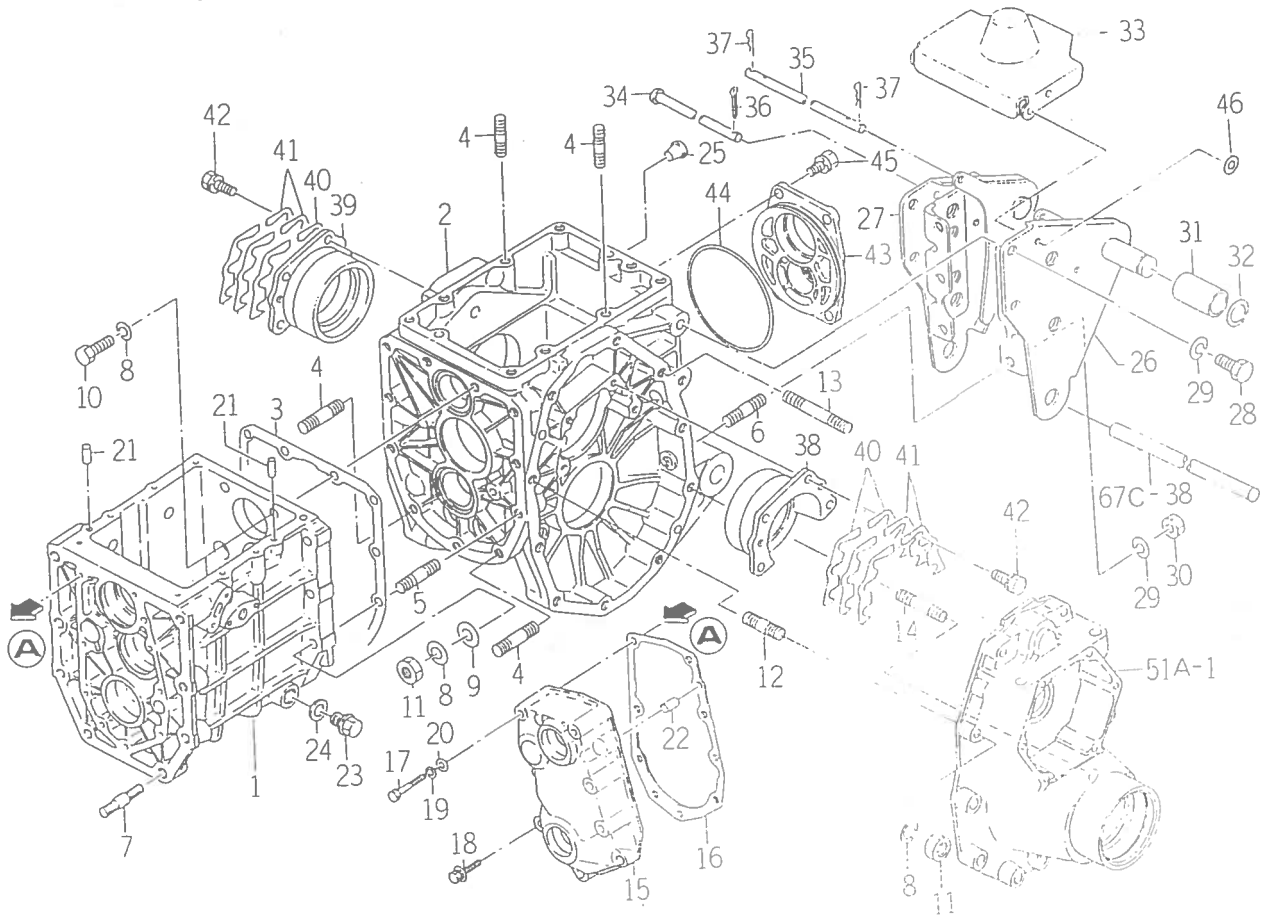
FIG. 34E TRANSMISSION CASE SYSTEM



1435-261D

KEY	PART CODE	DESCRIPTION	QTY	TYPE OF MODEL			REMARKS
				FE41A	I T C	C O L	
1	1427 - 201 - 001 - 00	CASE, F T - MISSION	1	*			
2	1427 - 201 - 002 - 50	CASE, TRANSMISSION	1	*			
3	1427 - 201 - 003 - 00	PACKING, R T - MISSION	1	*			
4	V252 - 261 - 003 - 00	STUD/M10X 30	4	*			
5	V252 - 261 - 003 - 50	STUD/M10X 35	7	*			
6	V251 - 261 - 202 - 5C	STUD/M12X 25	2	*			
7	V252 - 261 - 202 - 50	STUD/M12X 25	8	*			
8	V401 - 160 - 010 - 00	WASHER SP/M10	13	*			
9	V411 - 260 - 010 - 00	WASHER PL/M10	11	*			
10	V211 - 361 - 003 - 50	BOLT/M 6X16	2	*			
11	V303 - 260 - 010 - 00	NUT/M, 10	13	*			
12	V252 - 261 - 004 - 00	STUD/M10X 40	2	*			
13	V252 - 261 - 005 - 50	STUD/M10X 55	2	*			
14	V252 - 261 - 204 - 50	STUD/M12X 45	2	*			
15	1427 - 201 - 005 - 00	METAL, INPUT	1	*			
16	1427 - 201 - 006 - 00	PACKING, INPUT METAL	1	*			
17	V201 - 260 - 806 - 00	BOLT/M 8X 60	4	*			
18	V211 - 360 - 803 - 50	BOLT/M 6X16	4	*			
19	V401 - 160 - 008 - 00	WASHER SP/M 8	4	*			
20	V411 - 260 - 008 - 00	WASHER PL/M 8	4	*			
21	V521 - 100 - 801 - 60	PIN, ST B/ 8X16	4	*			
22	V521 - 100 - 801 - 40	PIN, ST B/ 8X14	2	*			
23	1427 - 201 - 007 - 00	PLUG, DRAIN	1	*			
24	1427 - 201 - 008 - 00	WASHER, SEAL/16	1	*			
25	1427 - 201 - 016 - 00	CAP, BLANK/M12	5	*			

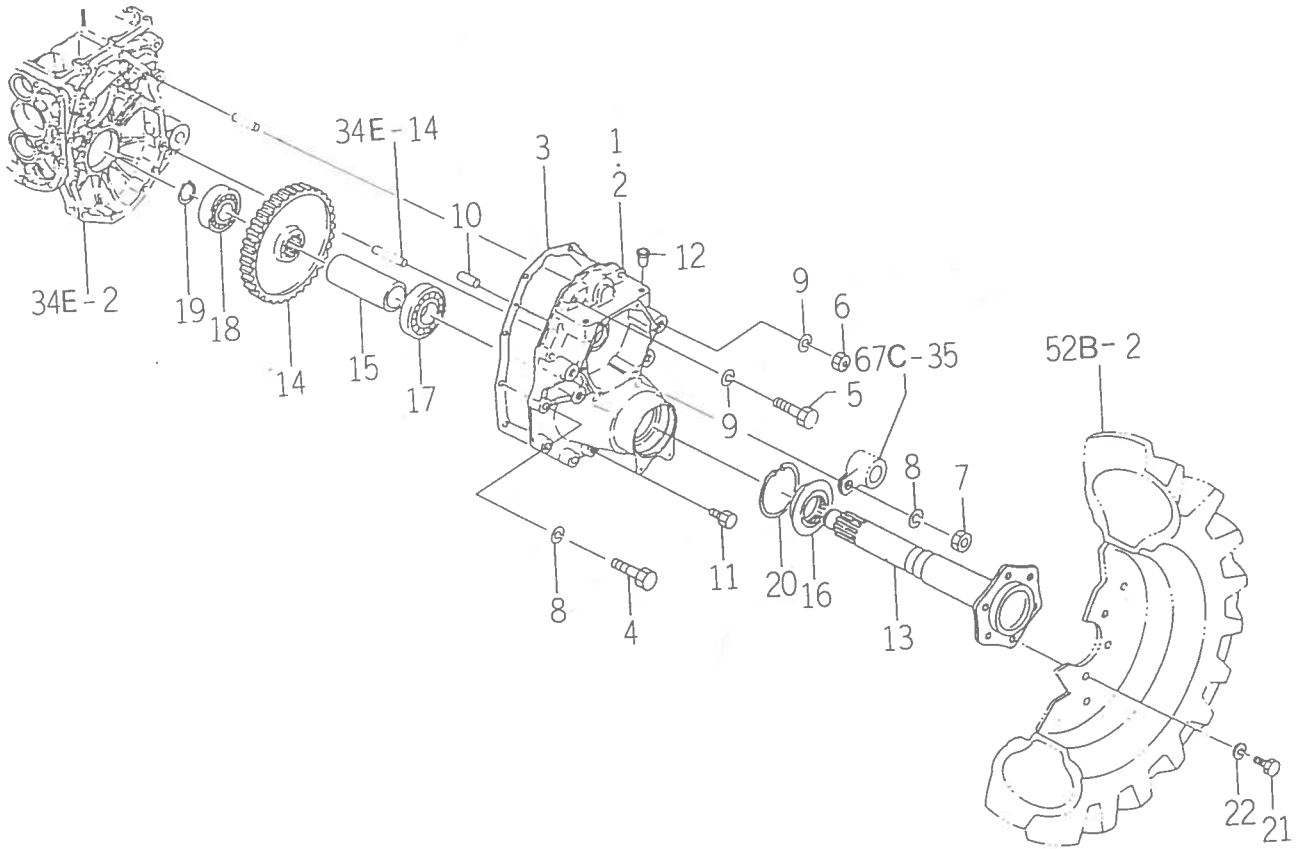
FIG. 34E TRANSMISSION CASE SYSTEM



1435-261D

KEY	PART CODE	DESCRIPTION	QTY	TYPE OF MODEL		I T C	C O L	G R P	REMARKS
				FE41A					
26	1434 - 201 - 200 - 20	BRACKET, 2P LH COMP	1	*					
27	1434 - 201 - 210 - 20	BRACKET, 2P RH COMP	1	*					
28	V201 - 261 - 203 - 00	BOLT/M12X 30	8	*					
29	V401 - 160 - 012 - 00	WASHER SP/M12	10	*					
30	V303 - 260 - 012 - 00	NUT/M12	2	*					
31	1427 - 201 - 009 - 00	BUSH/25X34X48	2	*					
32	V704 - 140 - 025 - 00	RING, SNAP/25 C	2	*					
33	1427 - 218 - 001 - 00	COVER, JOINT	1	*					
34	1427 - 201 - 021 - 00	PIN/8X212	1	*					
35	1427 - 201 - 011 - 00	PIN/8X220	1	*					
36	V500 - 162 - 502 - 00	PIN, SPLIT/2.5X20	1	*					
37	1305 - 241 - 001 - 00	PIN, HAIR	2	*					
38	1427 - 201 - 012 - 00	METAL, DIFF - CASE LH	1	*					
39	1427 - 201 - 013 - 00	METAL, DIFF - CASE RH	1	*					
40	1427 - 201 - 014 - 00	SHIM, DIFF - CASE A	2	*					
41	1427 - 201 - 015 - 00	SHIM, DIFF - CASE B	10	*					
42	V211 - 560 - 802 - 50	BOLT/M 6X16	8	*					
43	1427 - 201 - 018 - 20	METAL, PTO	1	*					
44	1612 - 201 - 002 - 00	SEAL, RING	1	*					
45	V211 - 261 - 003 - 00	BOLT/M 6X16	4	*					
46	V411 - 260 - 008 - 00	WASHER/M8	1	*					

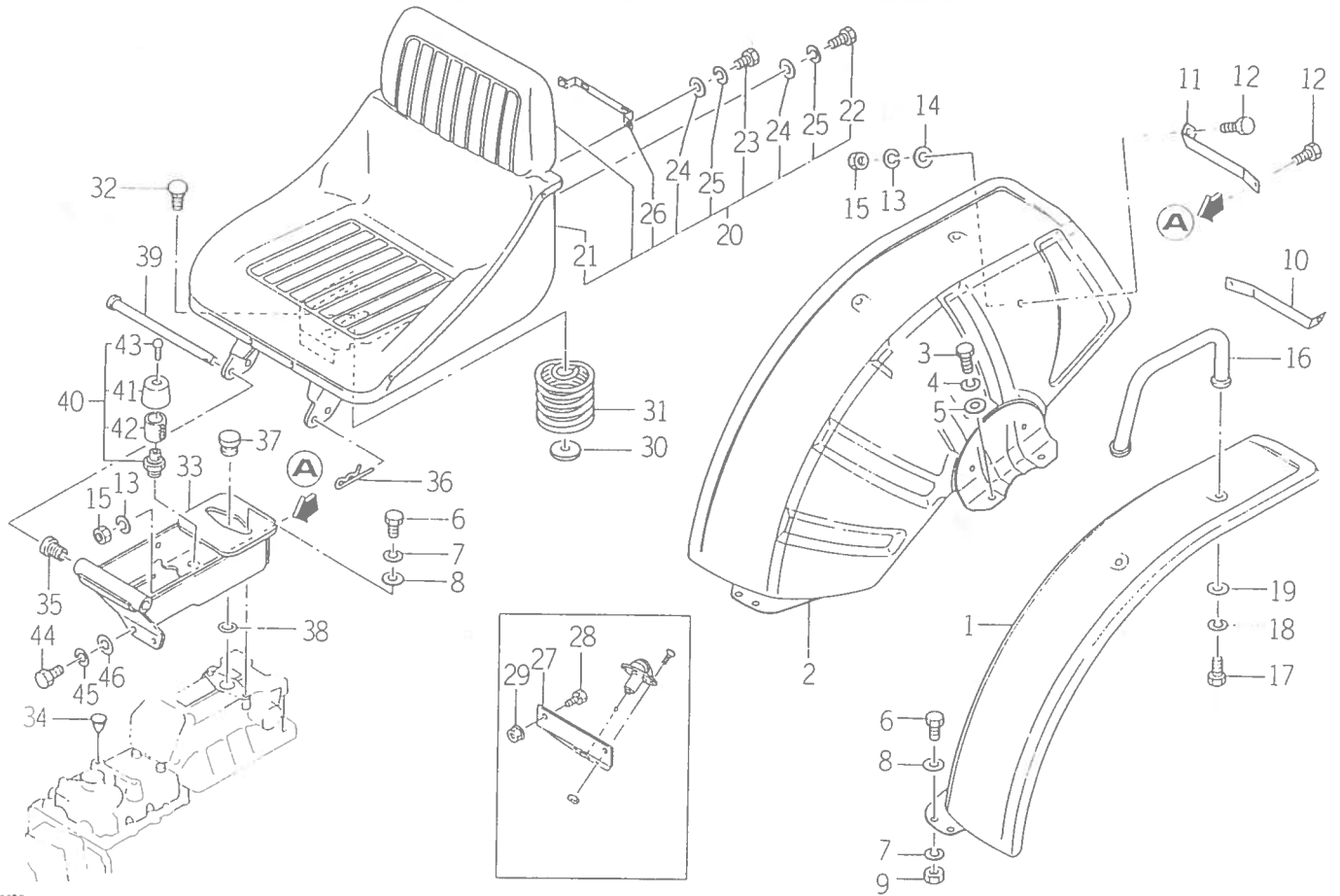
FIG. 51A REAR AXLE SYSTEM



1435-30E

KEY	PART CODE	DESCRIPTION	QTY	TYPE OF MODEL		I T C	C O L	G R P	REMARKS
				FE41A					
1	1579-306-001-00	HOUSING, AXLE REAR/LH	1	*					
2	1600-306-002-00	HOUSING, AXLE REAR/RH	1	*					
3	1427-306-003-00	PACKING, REAR AXLE	2	*					
4	V201-261-205-00	BOLT/M12X 50	10	*					
5	V201-261-004-50	BOLT/M10X 45	4	*					
6	V304-260-010-00	NUT/M10	4	*					
7	V304-260-012-00	NUT/M12	2	*					
8	V401-160-012-00	WASHER SP/M12	12	*					
9	V401-160-010-00	WASHER SP/M10	8	*					
10	V521-100-801-60	PIN, ST B/ 8X16	4	*					
11	7955-201-026-00	PLUG, DRAIN (1/4)	2	*					
12	1427-201-016-00	CAP, BLANK/M12	8	*					
13	1491-307-001-20	SHAFT, WHEEL	2	*					
14	1427-307-002-10	GEAR, WHEEL/58	2	*					
15	1427-307-003-00	PIPE/123	2	*					
16	1491-307-201-00	SEAL, OIL/QLF488011.5	2	*					
17	V600-110-630-60	BEARING, RB/6306	2	*					
18	V600-110-620-80	BEARING, RB/6208	2	*					
19	V704-140-030-00	RING, SNAP/30 C	2	*					
20	V705-140-080-00	RING, SNAP/80 C	2	*					
21	V201-361-203-00	BOLT/M12X 30	12	*					
22	V401-160-012-00	WASHER SP/M12	12	*					

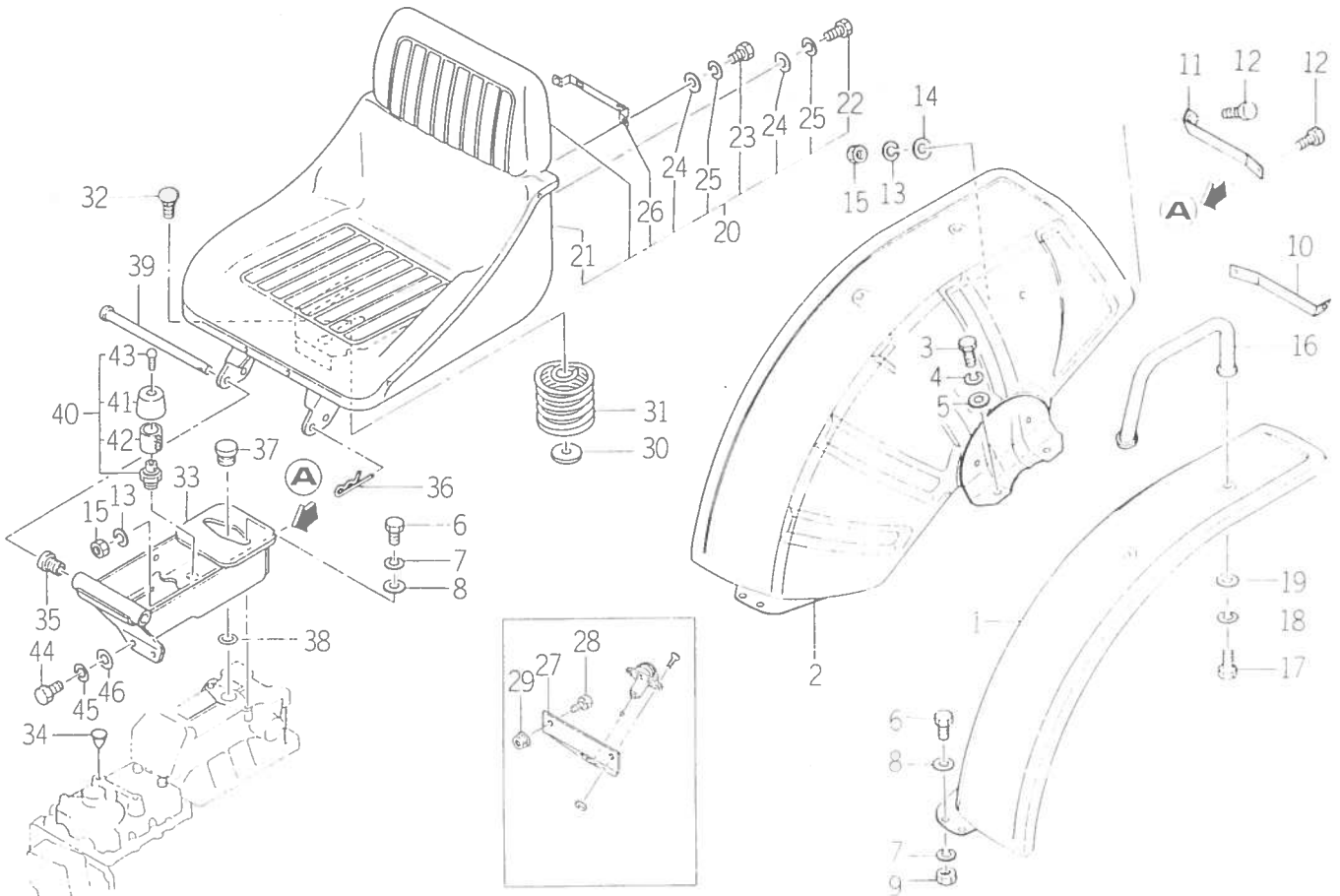
FIG. 63B SEAT AND FENDER SYSTEM



1435-ECCD

KEY	PART CODE	DESCRIPTION	QTY	TYPE OF MODEL		I T C	C O L	G R P	REMARKS
				FE41A					
1	1435 - 606 - 200 - 10	FENDER, LH	1	*					
2	1435 - 606 - 210 - 20	FENDER, RH COMP	1	*					
3	V201 - 261 - 202 - 50	BOLT/M12X 25	4	*					
4	V401 - 160 - 012 - 00	WASHER SP/M12	4	*					
5	V411 - 260 - 012 - 00	WASHER PL/M12	4	*					
6	V201 - 260 - 801 - 60	BOLT/M 8X 16	4	*					
7	V401 - 160 - 008 - 00	WASHER SP/M 8	4	*					
8	V411 - 260 - 008 - 00	WASHER PL/M 8	4	*					
9	V303 - 260 - 008 - 00	NUT/M 8	4	*					
10	1435 - 606 - 001 - 00	STAY, FENDER LH	1	*					
11	1435 - 606 - 002 - 00	STAY, FENDER RH	1	*					
12	V201 - 260 - 802 - 00	BOLT/M 8X 20	4	*					
13	V401 - 160 - 008 - 00	WASHER SP/M 8	4	*					
14	V411 - 260 - 008 - 00	WASHER PL/M 8	4	*					
15	V303 - 260 - 008 - 00	NUT/M 8	4	*					
16	1427 - 606 - 220 - 00	REST, ARM	2	*					
17	V201 - 260 - 802 - 00	BOLT/M 8X 20	4	*					
18	V401 - 160 - 008 - 00	WASHER SP/M 8	4	*					
19	V411 - 260 - 008 - 00	WASHER PL/M 8	2	*					
20	1435 - 611 - 240 - 00	SEAT ASSY	1	*					
21	1435 - 611 - 241 - 00	SEAT, A	1	*					
22	V200 - 260 - 602 - 00	BOLT/M 6X 20	2	*					
23	V200 - 260 - 603 - 00	BOLT/M 6X 30	2	*					
24	V411 - 260 - 006 - 00	WASHER PL/M 6	4	*					
25	V401 - 160 - 006 - 00	WASHER SP/M 6	4	*					

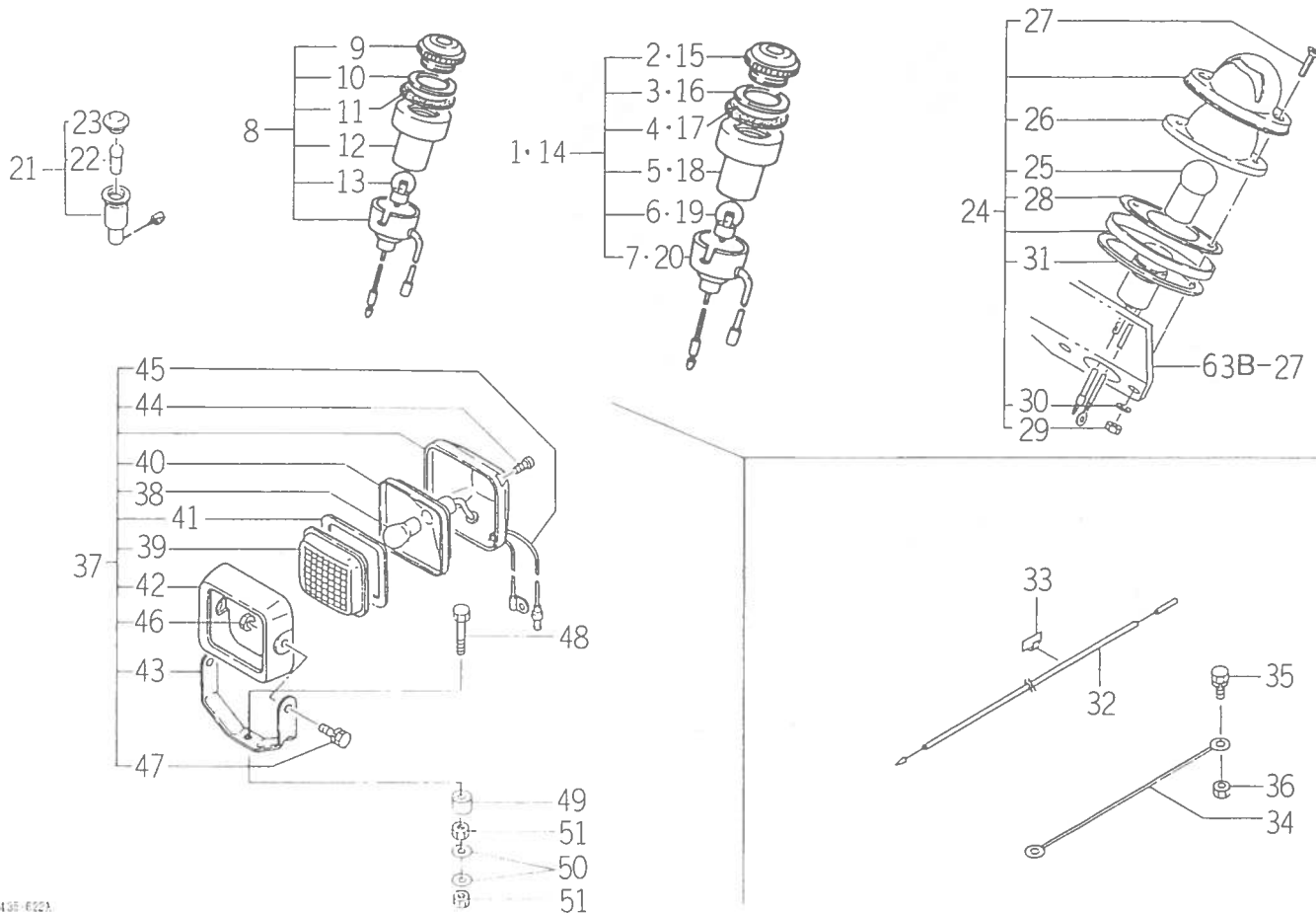
FIG. 63B SEAT AND FENDER SYSTEM



1435-611E

KEY	PART CODE	DESCRIPTION	QTY	TYPE OF MODEL		I T C	C O L	G R P	REMARKS
				FE41A					
26	1509 - 611 - 241 - 00	PLATE	1	*					
27	1572 - 622 - 001 - 00	STAY, NO. LAMP	1	*					
28	V211 - 200 - 802 - 00	BOLT/M 6X14	2	*					
29	V363 - 260 - 008 - 00	NUT/ M 8	2	*					
30	1422 - 668 - 210 - 00	WASHER	1	*					
31	1435 - 611 - 001 - 00	SPRING/HC109	1	*					
32	V240 - 261 - 003 - 80	BOLT/M10X38	1	*					
33	1435 - 611 - 210 - 00	BRACKET, SEAT COMP	1	*					
34	1434 - 611 - 002 - 10	CAP (M8)	2	*					
35	1421 - 611 - 004 - 00	CUSHION/RUBBER	2	*					
36	1305 - 241 - 001 - 00	PIN, HAIR	1	*					
37	7956 - 205 - 016 - 00	CAP, OIL/30	1	*					
38	1427 - 611 - 001 - 00	PACKING/RUBBER	1	*					
39	3737 - 154 - 002 - 00	PIN, SEAT SET	1	*					
40	1500 - 501 - 210 - 00	BREATHER ASSY	1	*					
41	1500 - 501 - 212 - 00	COVER	1	*					
42	1500 - 501 - 213 - 00	FILTER	1	*					
43	1500 - 501 - 214 - 00	SCREW/M4X20	1	*					
44	V201 - 260 - 801 - 60	BOLT/M 8X 16	2	*					
45	V401 - 160 - 008 - 00	WASHER SP/M08	2	*					
46	V411 - 260 - 008 - 00	WASHER PL/M 8	2	*					

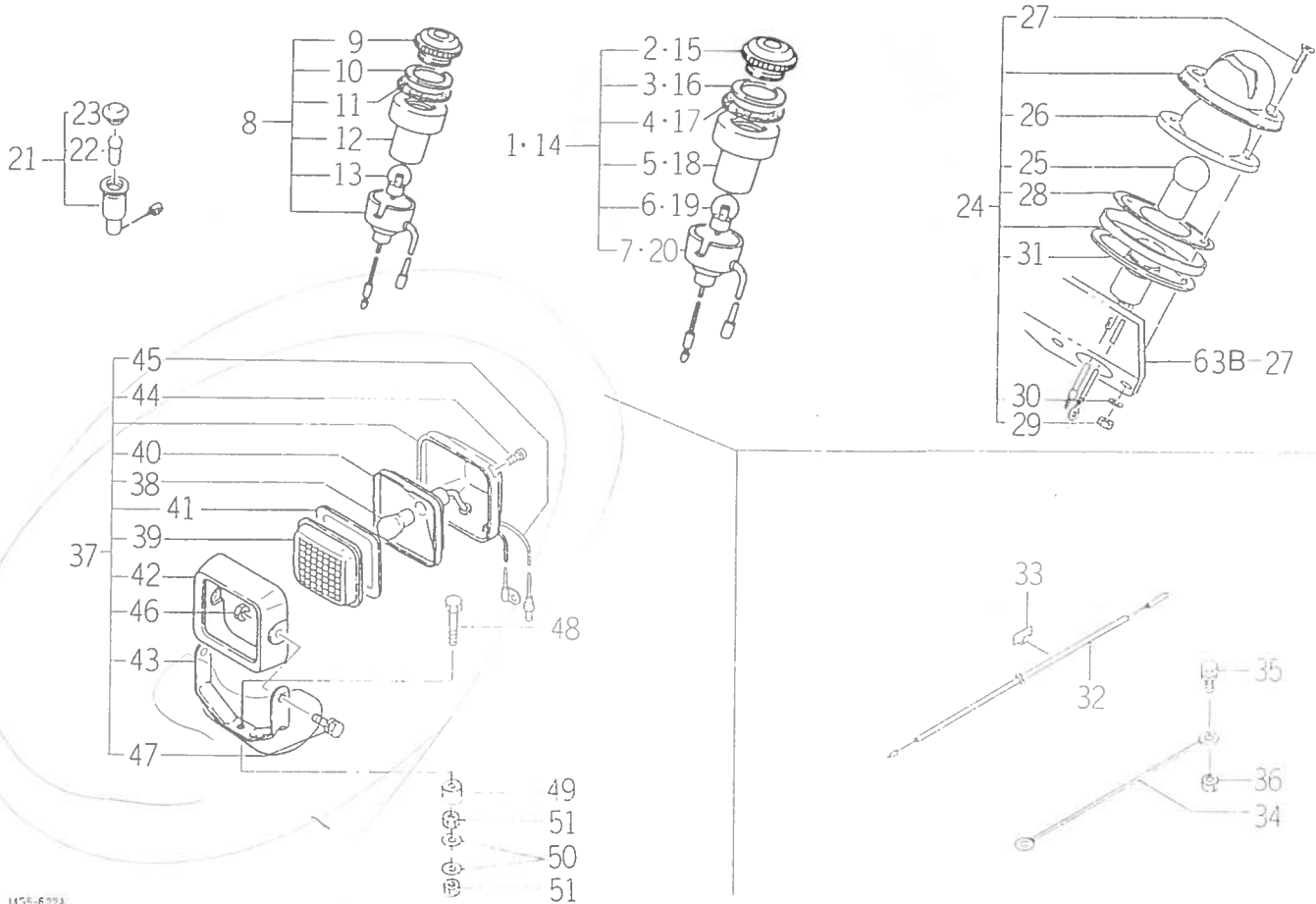
FIG. 64C ELECTRICAL SYSTEM (A)



1435-6221

KEY	PART CODE	DESCRIPTION	QTY	TYPE OF MODEL		I T C	C O L	G R P	REMARKS
				FE41A					
1	1421 - 600 - 055 - 00	LAMP, PILOT A ASSY	1	*					
2	1419 - 621 - 015 - 00	LENS	1	*					
3	1419 - 621 - 016 - 00	WASHER	1	*					
4	1419 - 621 - 017 - 00	GASKET	1	*					
5	1419 - 621 - 018 - 00	HOLDER	1	*					
6	1403 - 621 - 031 - 00	BULB/12V 3W	1	*					
7	1421 - 621 - 010 - 00	SOCKET	1	*					
8	1427 - 621 - 220 - 00	LAMP, PILOT B ASSY	1	*					
9	1419 - 621 - 015 - 00	LENS	1	*					
10	1419 - 621 - 016 - 00	WASHER	1	*					
11	1419 - 621 - 017 - 00	GASKET	1	*					
12	1419 - 621 - 018 - 00	HOLDER	1	*					
13	1403 - 621 - 031 - 00	BULB/12V 3W	1	*					
14	1421 - 600 - 057 - 00	LAMP, PILOT C ASSY	1	*					
15	1419 - 621 - 015 - 00	LENS	1	*					
16	1419 - 621 - 016 - 00	WASHER	1	*					
17	1419 - 621 - 017 - 00	GASKET	1	*					
18	1419 - 621 - 018 - 00	HOLDER	1	*					
19	1403 - 621 - 031 - 00	BULB/12V 3W	1	*					
20	1421 - 621 - 012 - 00	SOCKET	1	*					
21	1427 - 623 - 200 - 00	LAMP, PILOT ASSY	2	*					
22	1403 - 621 - 031 - 00	BULB/12V 3W	2	*					
23	1427 - 623 - 202 - 00	LENS	2	*					
24	1426 - 621 - 040 - 00	LIGHT ASSY	1	*					
25	1426 - 621 - 041 - 00	BULB/12V10W	1	*					

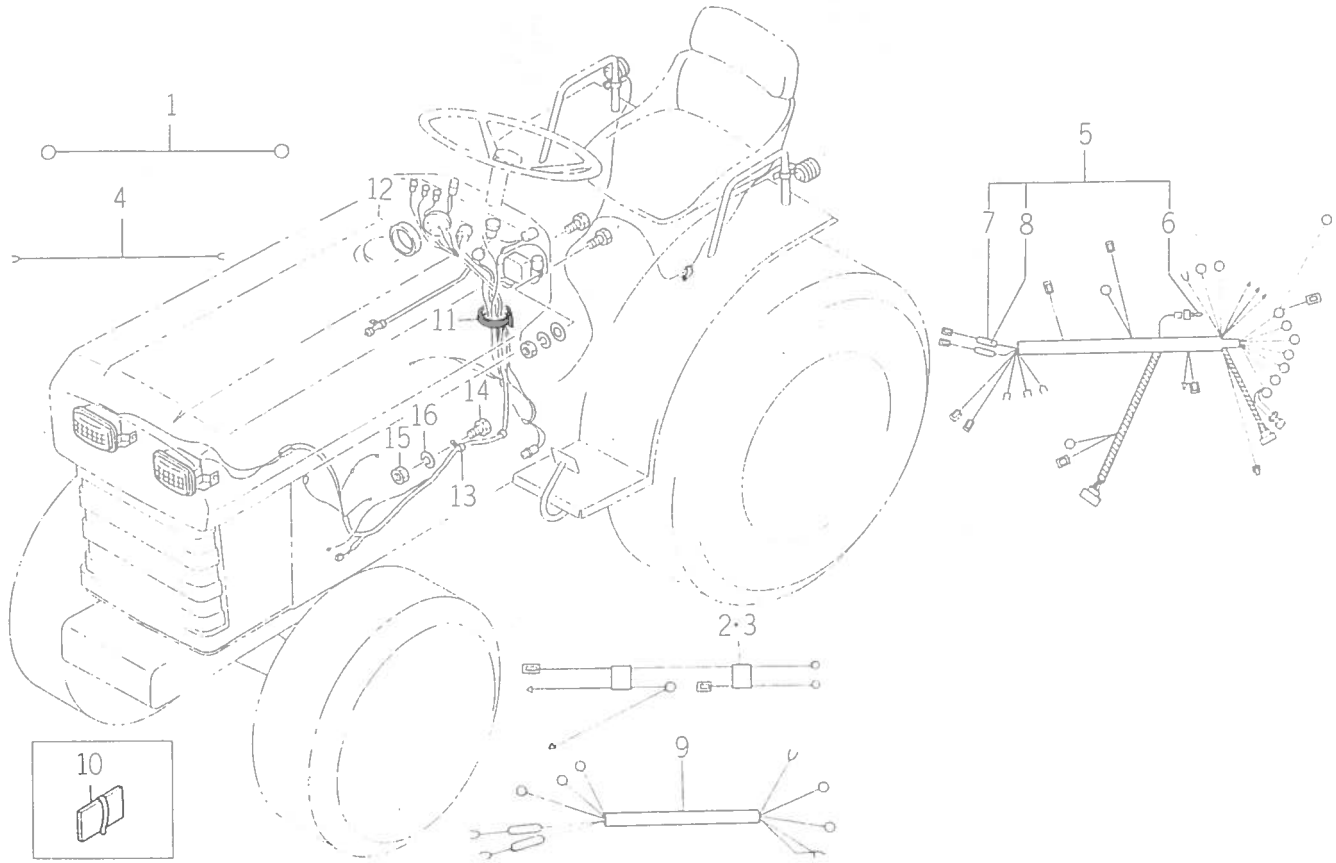
FIG. 64C ELECTRICAL SYSTEM (A)



1435-622A

KEY	PART CODE	DESCRIPTION	QTY	TYPE OF MODEL		I T C	C O L	G R P	REMARKS
				FE41A					
26	1426 - 621 - 043 - 00	LENS	1	*					
27	V113 - 164 - 001 - 60	SCREW, PLUS/M4X0.7X16	2	*					
28	1426 - 621 - 044 - 00	GASKET, LENS	1	*					
29	V300 - 260 - 004 - 00	NUT/M 4	2	*					
30	V401 - 260 - 004 - 00	WASHER SP/M 4	2	*					
31	1426 - 621 - 046 - 00	GASKET, BASE	1	*					
32	1509 - 623 - 019 - 00	HARNESS	1	*					
33	1426 - 621 - 038 - 00	HARNESS, CLAMP	2	*					
34	1509 - 623 - 018 - 00	HARNESS, EARTH	1	*					
35	V211 - 260 - 801 - 60	BOLT/M 6X14	1	*					
36	V304 - 260 - 008 - 00	NUT/M 8	1	*					
37	3506 - 301 - 260 - 00	LAMP, WORK ASSY	1	*					
38	1426 - 621 - 002 - 00	BALVE	1	*					
39	3506 - 301 - 262 - 00	LENS	1	*					
40	3506 - 301 - 263 - 00	REFLECTOR COMP	1	*					
41	3506 - 301 - 264 - 00	GASKET	1	*					
42	3506 - 301 - 265 - 00	RIM	1	*					
43	3506 - 301 - 267 - 00	STAY	1	*					
44	V195 - 104 - 020 - 40	SCREW/M4X4	4	*					
45	3506 - 301 - 269 - 00	LEAD COMP	1	*					
46	3506 - 301 - 311 - 00	NUT	2	*					
47	V210 - 260 - 601 - 60	BOLT, SEMS (S)	2	*					
48	V201 - 260 - 803 - 00	BOLT/M 8X 30	1	*					
49	1432 - 621 - 012 - 00	RUBBER, BAFFLE	1	*					
50	V411 - 260 - 008 - 00	WASHER PL/M 8	2	*					

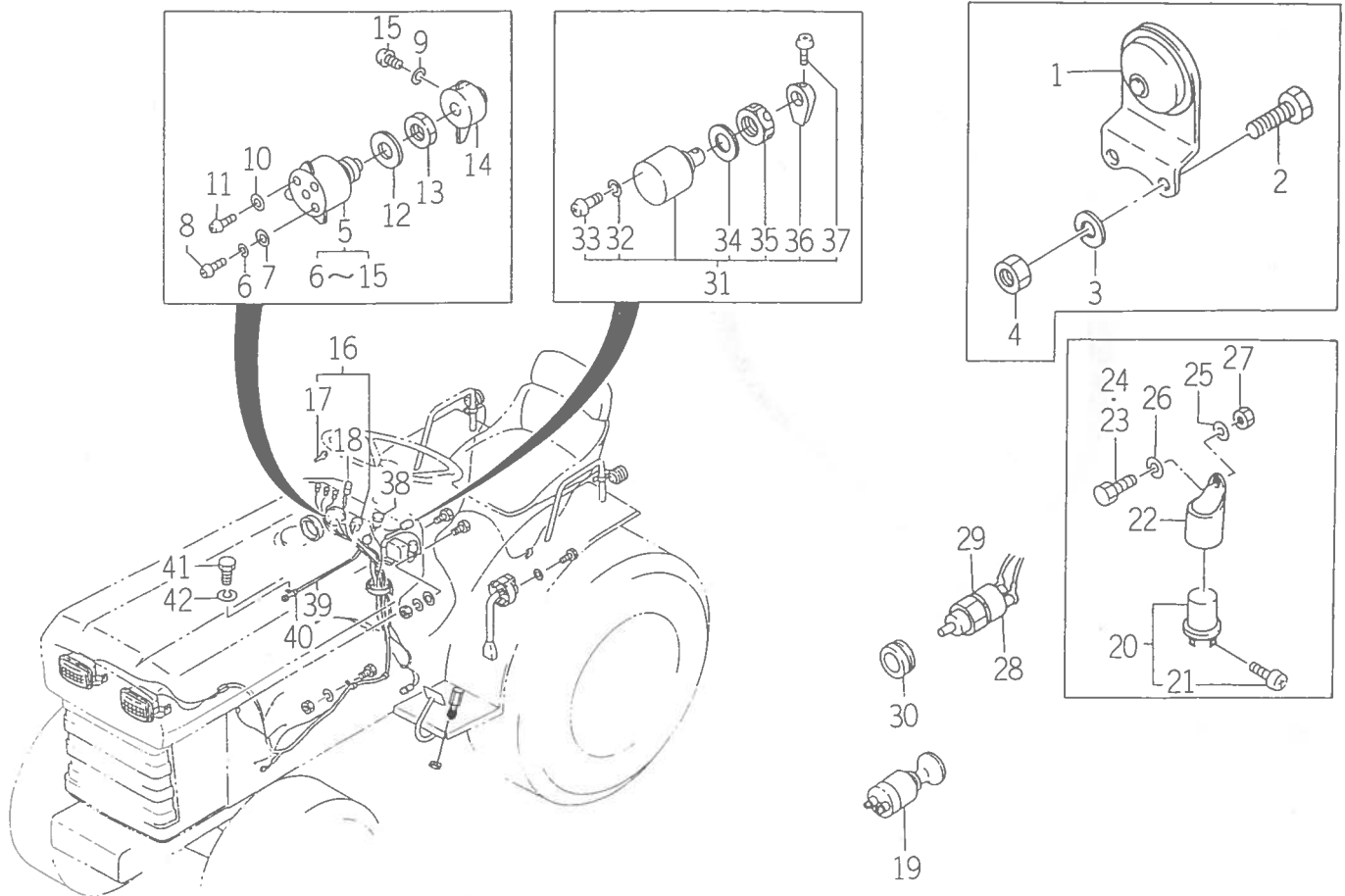
FIG. 65B ELECTRICAL SYSTEM (B)



1435-623C

KEY	PART CODE	DESCRIPTION	QTY	TYPE OF MODEL		I T C	C O L	G R P	REMARKS
				FE41A					
1	1427 - 621 - 025 - 00	HARNES, WIRE NO5	1	*					
2	1427 - 623 - 003 - 00	WIRE HARNES NO 8	1	*					
3	1427 - 623 - 004 - 00	WIRE HARNES NO 9	1	*					
4	1427 - 623 - 005 - 00	HARNES, WIRE/NO10	1	*					
5	1434 - 621 - 003 - 20	HARNES NO.11 ASSY	1	*					
6	3652 - 261 - 202 - 00	LINK, FUSIBLE	1	*					
7	1509 - 623 - 242 - 00	BOX, FUSE	2	*					
8	1432 - 621 - 273 - 00	FUSE, 5A	2	*					
9	1434 - 621 - 004 - 00	HARNES, WIRE NO12	1	*					
10	1421 - 621 - 036 - 00	CLAMP, HARNES	5	*					
11	1342 - 402 - 006 - 00	BAND, WIRE/250	1	*					
12	1427 - 621 - 026 - 00	CLAMP, HARNES/150	3	*					
13	3737 - 172 - 009 - 00	CLAMP, MAIN HARNES	2	*					
14	V200 - 260 - 601 - 20	BOLT/M 6X 12	2	*					
15	V300 - 260 - 006 - 00	NUT/M 6	2	*					
16	V401 - 160 - 006 - 00	WASHER SP/M 6	2	*					

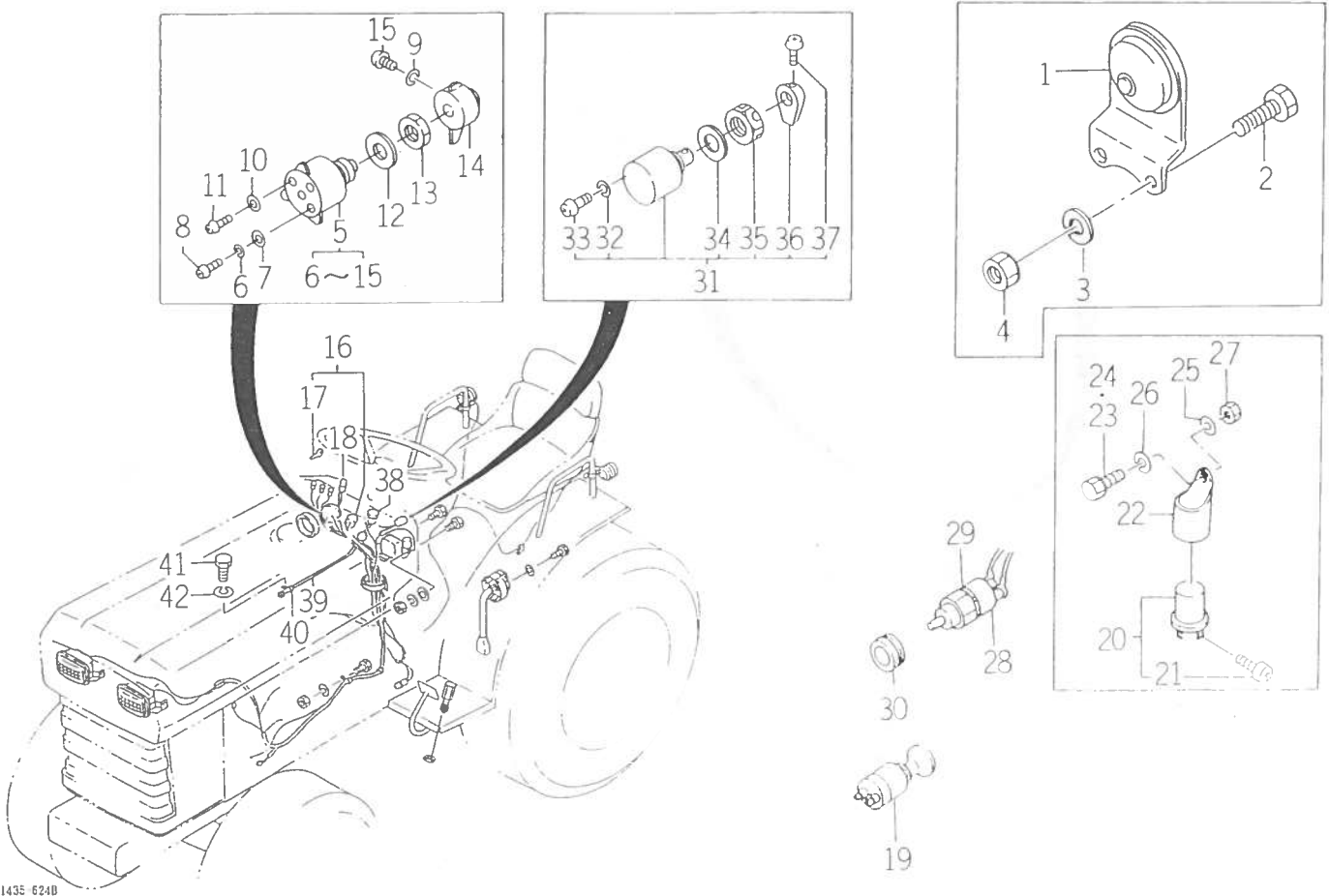
FIG. 65C ELECTRICAL SYSTEM (C)



143E (E241)

KEY	PART CODE	DESCRIPTION	QTY	TYPE OF MODEL		I T C	C O L	G R P	REMARKS
				FE41A					
1	1427 - 621 - 008 - 00	HORN	1	*					
2	V200 - 260 - 601 - 20	BOLT/M 6X 12	2	*					
3	V401 - 160 - 006 - 00	WASHER SP/M 6	2	*					
4	V300 - 260 - 006 - 00	NUT/M 6	2	*					
5	1421 - 621 - 250 - 00	SWITCH, STARTER	1	*					
6	V401 - 160 - 004 - 00	WASHER SP/M 4	1	*					
7	V411 - 260 - 004 - 00	WASHER PL/M 4	1	*					
8	V111 - 164 - 000 - 80	SCREW/M 4X 8	1	*					
9	V401 - 160 - 005 - 00	WASHER SP/M 5	4	*					
10	V411 - 260 - 005 - 00	WASHER PL/M 5	3	*					
11	V111 - 165 - 000 - 80	SCREW/M 5X 8	3	*					
12	1421 - 621 - 252 - 00	WASHER	1	*					
13	1421 - 621 - 253 - 00	NUT, RING	1	*					
14	1421 - 621 - 254 - 00	LEVER	1	*					
15	V111 - 165 - 001 - 50	SCREW/M 5X15	1	*					
16	1407 - 600 - 052 - 00	SWITCH, KEY	1	*					
17	1407 - 621 - 012 - 00	KEY	2	*					
18	3614 - 261 - 220 - 00	SWITCH, HORN ASSY	1	*					
19	1426 - 621 - 033 - 00	SWITCH, PARKING	1	*					
20	1426 - 621 - 035 - 00	FLASHER UNIT	1	*					
21	V111 - 164 - 000 - 60	SCREW/M 4X 6	2	*					
22	1426 - 621 - 036 - 00	BASE, FLASHER	1	*					
23	V200 - 260 - 602 - 50	BOLT/M 6X 25	1	*					
24	V200 - 260 - 602 - 00	BOLT/M 6X 20	1	*					
25	V411 - 260 - 006 - 00	WASHER PL/M 6	2	*					

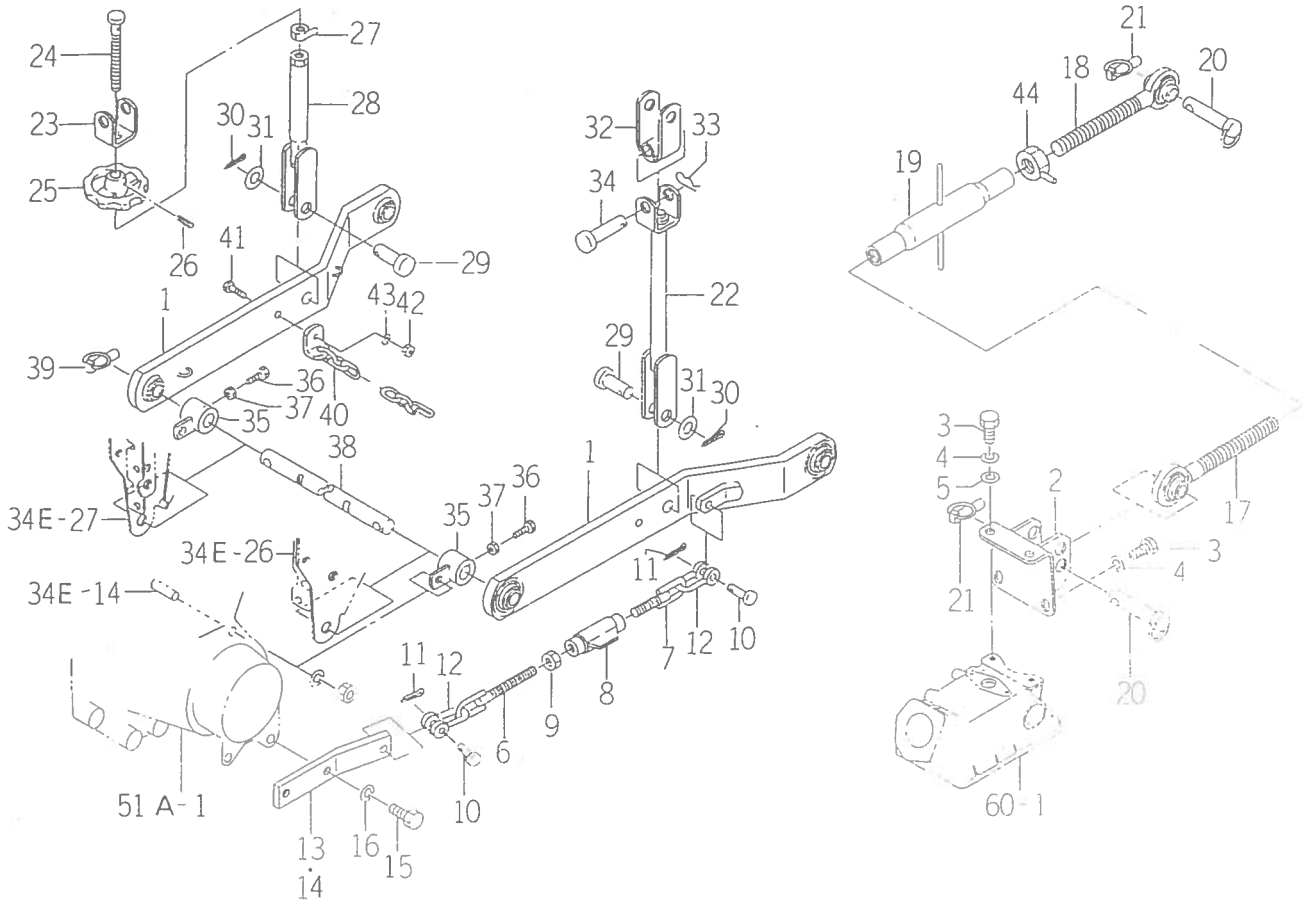
FIG. 65C ELECTRICAL SYSTEM (C)



1435 624D

KEY	PART CODE	DESCRIPTION	QTY	TYPE OF MODEL		I T C	C O L	G R P	REMARKS
				FE41A					
26	V401 - 160 - 006 - 00	WASHER SP/M 6	2	*					
27	V300 - 260 - 006 - 00	NUT/M 6	2	*					
28	1427 - 621 - 011 - 00	SWITCH, SAFETY	1	*					
29	V401 - 160 - 016 - 00	WASHER PL/M16	1	*					
30	1427 - 621 - 012 - 00	GROMMET	2	*					
31	1421 - 621 - 240 - 00	SWITCH, LEVER ASSY	1	*					
32	V401 - 160 - 003 - 00	WASHER SP/M 3	3	*					
33	V111 - 163 - 000 - 60	SCREW/M 3X 6	3	*					
34	1421 - 621 - 242 - 00	PACKING	1	*					
35	1421 - 621 - 243 - 00	NUT	1	*					
36	1421 - 621 - 244 - 00	LEVER, SWITCH	1	*					
37	1421 - 621 - 245 - 00	SCREW	1	*					
38	1434 - 621 - 200 - 00	METER, SPEED ASSY	1	*					
39	1423 - 621 - 003 - 00	CABLE, METER	1	*					
40	1425 - 621 - 004 - 00	CLAMP	1	*					
41	V201 - 260 - 801 - 20	BOLT/M 8X 12	1	*					
42	V401 - 160 - 008 - 00	WASHER SP/M08	1	*					

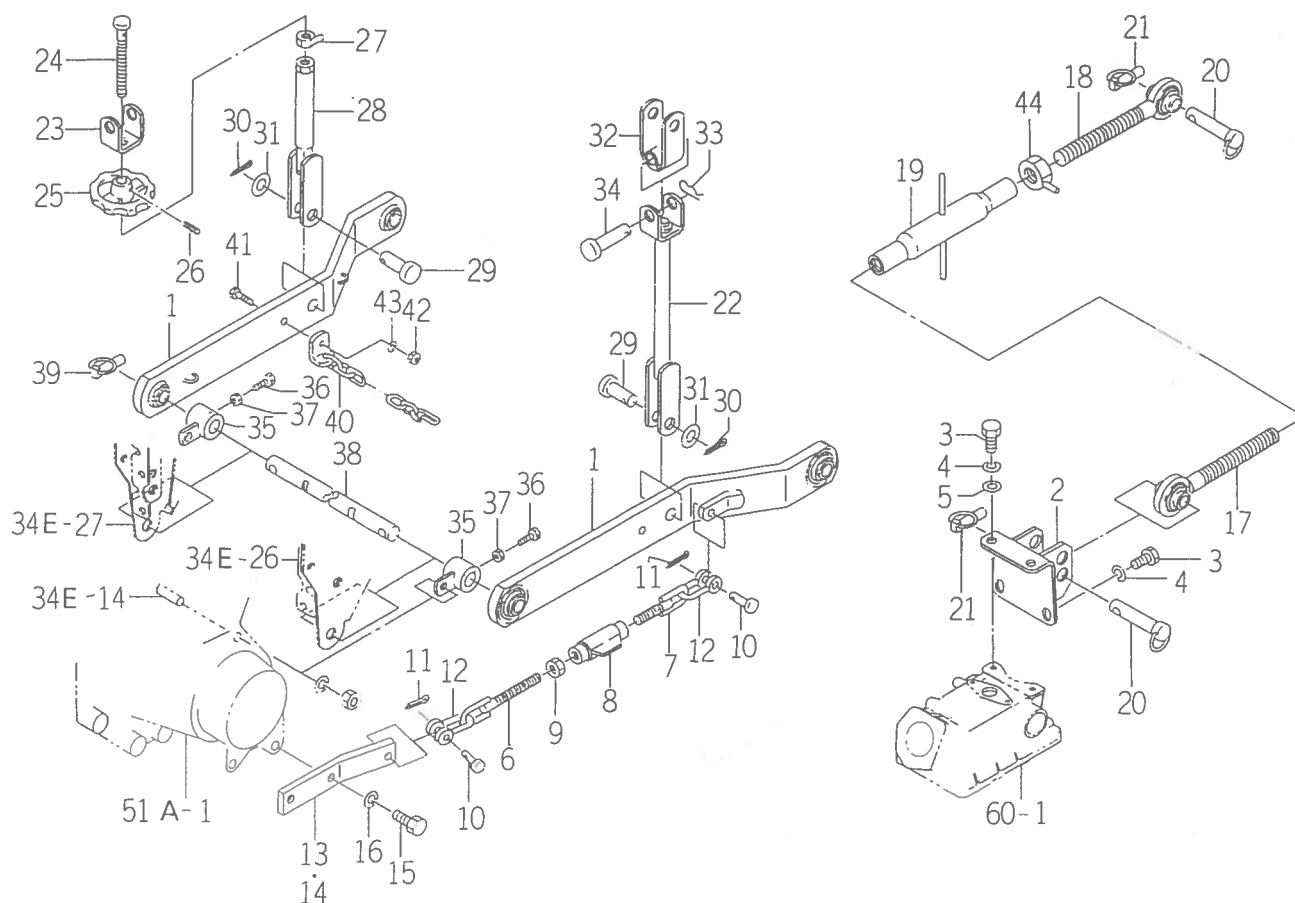
FIG. 67C THREE POINT SYSTEM



1435-511B

KEY	PART CODE	DESCRIPTION	QTY	TYPE OF MODEL		I T C	C O L	G R P	REMARKS
				FE41A					
1	1435 - 511 - 250 - 00	LINK, LOWER COMP	2	*					
2	1434 - 511 - 200 - 20	BRACKET, LINK COMP	1	*					
3	V201 - 261 - 202 - 50	BOLT/M12X 25	4	*					
4	V401 - 160 - 012 - 00	WASHER SP/M12	4	*					
5	V411 - 260 - 012 - 00	WASHER PL/M12	2	*					
6	1435 - 511 - 270 - 00	CHAIN, CHECK/148 COMP	2	*					
7	1427 - 511 - 220 - 00	CHAIN, CHECK RH	2	*					
8	1427 - 511 - 320 - 00	TURNBUCKLE 12 COMP	2	*					
9	V305 - 260 - 012 - 00	NUT/M,12	2	*					
10	1427 - 511 - 001 - 00	PIN/10X32	4	*					
11	V500 - 162 - 502 - 00	PIN, SPLIT/2.5X20	4	*					
12	1427 - 511 - 002 - 00	SHACKLE	4	*					
13	1600 - 514 - 002 - 00	PLATE	1	*					
14	1600 - 514 - 003 - 00	PLATE	1	*					
15	V201 - 361 - 203 - 00	BOLT/M12X 30	4	*					
16	V401 - 160 - 012 - 00	WASHER SP/M12	4	*					
17	1427 - 511 - 250 - 10	LINK, TOP LH COMP	1	*					
18	1427 - 511 - 260 - 10	LINK, TOP (RH) COMP	1	*					
19	1550 - 514 - 290 - 00	TURNBUCKLE COMP	1	*					
20	1434 - 511 - 210 - 00	PIN, TOP LINK	2	*					
21	1421 - 502 - 002 - 00	PIN, LINK	2	*					
22	1427 - 511 - 270 - 00	ROD, LIFT LH	1	*					
23	1427 - 511 - 273 - 00	FORK	1	*					
24	1427 - 511 - 003 - 00	SCREW	1	*					
25	1427 - 511 - 004 - 00	HANDLE, ADJ	1	*					

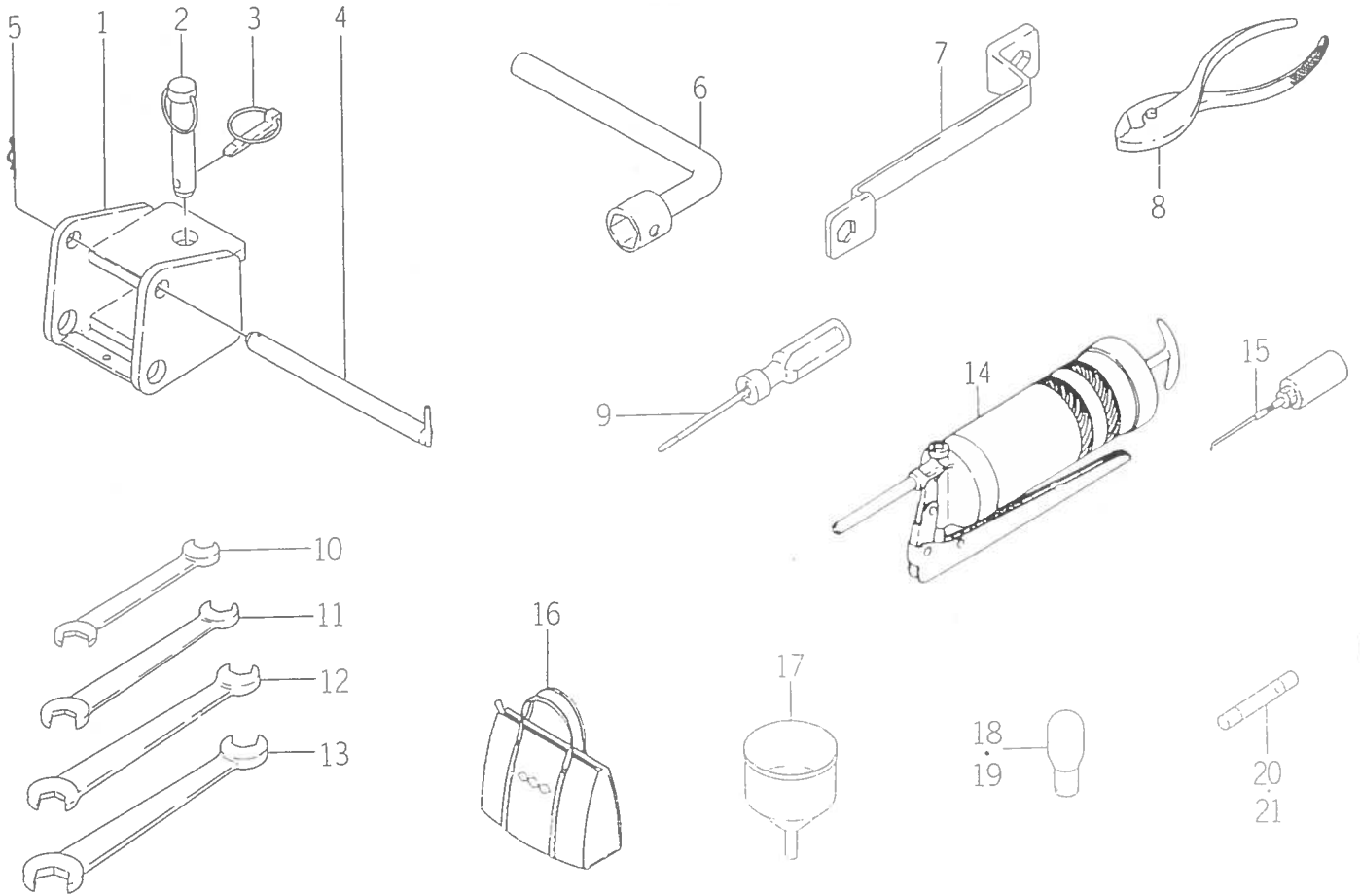
FIG. 67C THREE POINT SYSTEM



1135 511B

KEY	PART CODE	DESCRIPTION	QTY	TYPE OF MODEL		I T C	C O L	G R P	REMARKS
				FE41A					
26	V580 - 140 - 503 - 20	PIN, SPRING 5X32	1	*					
27	1427 - 511 - 280 - 00	NUT, LOCK/16	1	*					
28	1427 - 511 - 290 - 00	ROD, LIFT	1	*					
29	1427 - 511 - 005 - 00	PIN/16X44	2	*					
30	V500 - 164 - 002 - 50	PIN, SPLIT/4.0X25	2	*					
31	V411 - 260 - 016 - 00	WASHER PL/M16	2	*					
32	1427 - 511 - 300 - 00	FORK, BRACKET	2	*					
33	1305 - 931 - 003 - 00	PIN, HAIR	2	*					
34	1423 - 520 - 001 - 10	PIN/16X63	2	*					
35	1435 - 511 - 260 - 00	HUB/22X40X37 COMP	2	*					
36	V201 - 360 - 802 - 50	BOLT/M 8X 25	2	*					
37	V305 - 260 - 008 - 00	NUT/M, 8	2	*					
38	1600 - 514 - 001 - 00	PIN/22X384	1	*					
39	1421 - 502 - 002 - 00	PIN, LINK	2	*					
40	1427 - 511 - 310 - 00	CHAIN, LW LINK	2	*					
41	V201 - 260 - 803 - 00	BOLT/M 8X 30	2	*					
42	V303 - 260 - 008 - 00	NUT/M, 8	2	*					
43	V401 - 160 - 008 - 00	WASHER SP/M 8	2	*					
44	1402 - 511 - 600 - 00	NUT, TOP LINK LOCK	1	*					

FIG. 71B TOOLS AND TRAILER HITCH SYSTEM



1435-511A

KEY	PART CODE	DESCRIPTION	QTY	TYPE OF MODEL		I T C	C O L	G R P	REMARKS
				FE41A					
1	1427 - 921 - 200 - 10	HITCH, TRAILLER	1	T					
2	1488 - 247 - 250 - 00	PIN ASSY	1	T					
3	1421 - 502 - 002 - 00	PIN, LINK	1	T					
4	1427 - 921 - 220 - 00	PIN/19X214	1	T					
5	1341 - 906 - 001 - 00	PIN, HAIR	1	T					
6	2130 - 931 - 001 - 00	SPANNER, BOX/17	1	*					
7	1401 - 906 - 005 - 00	WRENCH, SOCKET/17X19	1	*					
8	V936 - 150 - 015 - 00	PLIERS/G150	1	*					
9	2130 - 931 - 210 - 00	SCREWDRIVER ASSY	1	*					
10	V920 - 550 - 801 - 00	SPANNER/ 8X10	1	*					
11	V920 - 551 - 201 - 40	SPANNER/12X14	1	*					
12	V920 - 551 - 301 - 70	SPANNER/13X17	1	*					
13	V920 - 551 - 902 - 20	SPANNER/19X22	1	*					
14	1526 - 911 - 001 - 00	GAN, GREASE	1	*					
15	3750 - 412 - 003 - 00	OILER	1	*					
16	3560 - 702 - 001 - 10	BAG, TOOL	1	*					
17	1427 - 906 - 201 - 00	FUNNEL	1	*					
18	1427 - 621 - 015 - 00	BULB/12V 25/25	1	*					
19	1444 - 621 - 242 - 00	BULB/12V 20W	1	*					
20	1432 - 621 - 273 - 00	FUSE/5A	2	*					
21	1423 - 621 - 201 - 00	FUSE/15	1	*					

*** NUMERICAL INDEX ***

PART CODE	REF. NO.	PART CODE	REF. NO.	PART CODE	REF. NO.	PART CODE	REF. NO.	PART CODE	REF. NO.	PART CODE	REF. NO.
1305-241-001-00	34E-37	1421-621-252-00	65C-12	1427-201-021-00	34E-34	1427-623-202-00	64C-23	1434-601-230-20	20B-18		
	63B-36	1421-621-253-00	65C-13	1427-218-001-00	34E-33	1427-906-201-00	71B-17	1434-601-240-00	20B-22		
1305-931-003-00	67C-33	1421-621-254-00	65C-14	1427-306-003-00	51A-3	1427-921-200-10	71B-1	1434-601-250-00	20B-1		
1341-906-001-00	71B-5	1421-922-001-00	66A-5	1427-307-002-10	51A-14	1427-921-220-00	71B-4	1434-611-002-10	63B-34		
1342-402-006-00	65B-11	1422-668-210-00	63B-30	1427-307-003-00	51A-15	1427-922-220-00	66A-8	1434-621-003-20	65B-5		
1401-122-005-00	31D-17	1423-520-001-10	67C-34	1427-313-200-00	31D-22	1427-922-230-00	66A-9	1434-621-004-00	65B-9		
1401-906-005-00	71B-7	1423-621-003-00	65C-39	1427-313-204-00	31D-23	1427-923-200-00	66A-1	1434-621-200-00	65C-38		
1402-511-600-00	67C-44	1423-621-201-00	71B-21	1427-313-205-00	31D-24	1432-621-012-00	64C-49	1434-915-210-00	19A-2		
1403-312-003-00	31D-5	1423-621-004-00	65C-40	1427-313-206-00	31D-25	1432-621-273-00	65B-8	1435-317-201-00	52B-1		
1403-621-031-00	64C-6	1426-621-002-00	64C-38	1427-313-209-00	31D-26		71B-20	1435-511-250-00	67C-1		
64C-13		1426-621-033-00	65C-19	1427-317-220-00	31D-27	1434-101-001-00	18A-14	1435-511-260-00	67C-35		
64C-19		1426-621-035-00	65C-20	1427-317-004-00	52B-25	1434-101-002-00	18A-15	1435-511-270-00	67C-6		
64C-22		1426-621-036-00	65C-22	1427-511-001-00	67C-10	1434-101-003-10	18A-26	1435-601-005-00	20B-11		
1404-312-005-00	31D-13	1426-621-038-00	64C-33	1427-511-002-00	67C-12	1434-101-004-10	18A-27	1435-601-200-10	20B-7		
1404-312-006-00	31D-10	1426-621-040-00	64C-24	1427-511-003-00	67C-24	1434-101-007-00	19A-11	1435-606-001-00	63B-10		
1407-600-052-00	65C-16	1426-621-041-00	64C-25	1427-511-004-00	67C-25	1434-101-210-00	18A-1	1435-606-002-00	63B-11		
1407-621-012-00	65C-17	1426-621-043-00	64C-26	1427-511-005-00	67C-29	1434-101-212-00	18A-2	1435-606-200-10	63B-1		
1415-312-500-00	31D-8	1426-621-044-00	64C-28	1427-511-220-00	67C-7	1434-101-213-00	18A-3	1435-606-210-20	63B-2		
1419-621-015-00	64C-2	1426-621-046-00	64C-31	1427-511-250-10	67C-17	1434-101-214-00	18A-4	1435-611-001-00	63B-31		
64C-9		1427-101-006-00	18A-6	1427-511-260-10	67C-18	1434-101-215-00	18A-5	1435-611-210-00	63B-33		
64C-15		1427-101-007-00	18A-11	1427-511-270-00	67C-22	1434-101-216-00	18A-7	1435-611-240-00	63B-20		
64C-3		1427-101-011-00	18A-16	1427-511-273-00	67C-23	1434-101-230-00	19A-1	1435-611-241-00	63B-21		
64C-10		1427-101-022-00	18A-28	1427-511-280-00	67C-27	1434-101-240-00	19A-15	1444-621-242-00	71B-19		
64C-16		1427-101-283-00	18A-20	1427-511-290-00	67C-28	1434-101-272-10	18A-19	1480-603-001-00	20B-16		
1419-621-017-00	64C-4	1427-101-284-00	18A-23	1427-511-300-00	67C-32	1434-101-273-00	18A-21	1488-247-250-00	71B-2		
64C-11		1427-101-286-00	18A-22	1427-511-310-00	67C-40	1434-101-280-10	18A-30	1491-103-001-00	19A-4		
64C-17		1427-101-287-00	18A-25	1427-511-320-00	67C-8	1434-102-210-10	18A-18	1491-103-200-00	19A-3		
64C-5		1427-101-288-00	18A-24	1427-601-002-00	20B-5	1434-201-200-20	34E-26	1491-103-210-00	19A-14		
64C-12		1427-111-244-10	20B-2	1427-601-003-00	20B-6	1434-201-210-20	34E-27	1491-103-230-00	19A-5		
64C-18		1427-201-001-00	34E-1	1427-601-005-00	20B-12	1434-312-001-00	31D-19	1491-307-001-20	51A-13		
1421-502-002-00	67C-39	1427-201-002-50	34E-2	1427-601-206-00	20B-3	1434-312-007-00	31D-30	1491-307-201-00	51A-16		
1421-600-055-00	64C-1	1427-201-006-00	34E-16	1427-611-001-00	63B-38	1434-312-200-00	31D-1	1500-501-212-00	63B-40		
1421-600-057-00	64C-14	1427-201-007-00	34E-23	1427-621-008-00	65C-1	1434-312-210-00	31D-3	1500-501-213-00	63B-42		
1421-611-004-00	63B-35	1427-201-008-00	34E-24	1427-621-011-00	65C-28	1434-312-220-00	31D-6	1509-611-241-00	63B-26		
1421-621-010-00	64C-7	1427-201-009-00	34E-31	1427-621-012-00	65C-30	1434-312-230-00	31D-16	1509-623-018-00	64C-34		
1421-621-012-00	64C-20	1427-201-011-00	34E-35	1427-621-015-00	71B-18	1434-312-330-00	31D-9	1509-623-019-00	64C-32		
1421-621-036-00	65B-10	1427-201-012-00	34E-38	1427-621-025-00	65B-1	1434-312-340-00	31D-33	1509-623-242-00	65B-7		
1421-621-240-00	65C-31	1427-201-013-00	34E-39	1427-621-026-00	65B-12	1434-312-350-00	31D-34	1526-911-001-00	71B-14		
1421-621-242-00	65C-34	1427-201-014-00	34E-40	1427-621-220-00	64C-8	1434-312-360-00	31D-35	1550-514-290-00	67C-19		
1421-621-243-00	65C-35	1427-201-015-00	34E-41	1427-623-003-00	65B-2	1434-511-200-20	67C-2	1572-622-001-00	63B-27		
1421-621-244-00	65C-36	1427-201-016-00	34E-25	1427-623-004-00	65B-3	1434-511-210-00	67C-20	1575-102-007-00	18A-17		
1421-621-245-00	65C-37	1427-201-018-20	34E-12	1427-623-005-00	65B-4	1434-601-001-10	20B-4	1579-306-001-00	51A-1		
1421-621-250-00	65C-5	1427-201-018-20	34E-43	1427-623-200-00	64C-21	1434-601-220-00	20B-17	1600-306-002-00	51A-2		

PART CODE	REF. NO.	PART CODE	REF. NO.	PART CODE	REF. NO.	PART CODE	REF. NO.	PART CODE	REF. NO.
1600-514-001-00	67C-38	V201-260-801-60	63B-6	V303-260-012-00	66A-4	V401-160-012-00	67C-16	V580-140-802-80	31D-37
1600-514-002-00	67C-13	V201-260-802-00	63B-44	V304-260-008-00	66A-10	V401-160-016-00	65C-29	V600-110-620-80	51A-18
1600-514-003-00	67C-14	V201-260-802-00	63B-12	V304-260-010-00	64C-36	V401-260-004-00	64C-30	V600-110-630-60	51A-17
1612-201-002-00	34E-44	V201-260-803-00	63B-17	V304-260-012-00	51A-6	V411-260-004-00	65C-7	V704-140-022-00	31D-2
2130-931-001-00	71B-6	V201-260-803-00	64C-48	V305-260-012-00	51A-7	V411-260-005-00	65C-10	V704-140-025-00	34E-32
2130-931-210-00	71B-9	V201-260-803-50	67C-41	V305-260-008-00	31D-18	V411-260-006-00	18A-10	V704-140-030-00	51A-19
3506-301-260-00	64C-37	V201-260-806-00	18A-12	V305-260-012-00	31D-40		20B-24	V705-140-080-00	51A-20
3506-301-262-00	64C-39	V201-261-001-60	19A-12		67C-37		63B-24	V763-400-000-00	31D-7
3506-301-263-00	64C-40	V201-261-004-50	34E-17		66A-7		65C-25	V888-240-081-80	52B-2
3506-301-264-00	64C-41	V201-261-003-50	31D-20		67C-9		18A-13	V889-000-081-80	52B-3
3506-301-265-00	64C-42	V201-261-004-50	51A-5	V363-260-008-00	63B-29		19A-6	V920-550-801-00	71B-10
3506-301-267-00	64C-43	V201-261-202-50	63B-3	V401-160-003-00	65C-32		19A-9	V920-551-201-40	71B-11
3506-301-269-00	64C-45	V201-261-203-00	67C-3	V401-160-004-00	65C-6		19A-17	V920-551-301-70	71B-12
3506-301-311-00	64C-46	V201-261-203-00	34E-28	V401-160-005-00	65C-9		20B-10	V920-551-902-20	71B-13
3560-702-001-10	71B-16	V201-261-205-00	51A-4	V401-160-006-00	18A-9		20B-21	V936-150-015-00	71B-8
3614-261-220-00	65C-18	V201-261-205-50	66A-2		18A-32		20B-25	V999-300-001-00	52B-4
3621-304-003-00	18A-29	V201-360-802-50	67C-36		20B-13		31D-11	W201-261-205-50	66A-6
3652-261-202-00	65B-6	V201-361-203-00	51A-21		63B-25		31D-14		
3737-154-002-00	63B-39	V210-260-601-60	67C-15		65B-16		31D-31		
3737-172-009-00	65B-13	V211-200-802-00	64C-47		65C-3		31D-41		
3750-412-003-00	71B-15	V211-260-801-60	63B-28		65C-26		34E-20		
7955-201-026-00	51A-11	V211-261-003-00	64C-35		19A-8		34E-46		
7956-205-016-00	63B-37	V211-261-003-00	34E-45		19A-13		63B-8		
V111-163-000-60	65C-33	V211-360-803-50	34E-18		19A-18		63B-14		
V111-164-000-60	65C-21	V211-361-003-50	34E-10		20B-9		63B-19		
V111-164-000-80	65C-8	V211-560-802-50	34E-42		20B-20		63B-46		
V111-165-000-80	65C-11	V240-261-003-80	63B-32		20B-24		64C-50		
V111-165-001-50	65C-15	V251-261-202-5C	34E-6		31D-29	V411-260-010-00	34E-9		
V113-164-001-60	64C-27	V252-261-003-00	34E-4		34E-19	V411-260-012-00	63B-5		
V195-104-020-40	64C-44	V252-261-003-50	34E-5		63B-7		66A-12		
V200-260-601-20	18A-31	V252-261-004-00	34E-12		63B-13		67C-5		
	65B-14	V252-261-005-50	34E-13		63B-18	V411-260-016-00	67C-31		
	65C-2	V252-261-202-50	34E-7		63B-45	V500-162-002-00	31D-12		
V200-260-601-60	18A-8	V252-261-204-50	34E-14		65C-42		31D-15		
V200-260-602-00	63B-22	V300-260-004-00	64C-29		67C-43	V500-162-502-00	34E-36		
	65C-24	V300-260-006-00	65B-15		31D-21		67C-11		
	65C-23		65C-4		34E-8	V500-163-002-00	31D-32		
V200-260-603-00	63B-23		65C-27		51A-9		31D-42		
V201-260-801-20	19A-7	V303-200-008-00	64C-51		34E-29	V500-164-002-50	67C-30		
	19A-16	V303-260-008-00	19A-10		51A-8	V521-100-801-40	34E-22		
	65C-41		63B-9		51A-22	V521-100-801-60	34E-21		
V201-260-801-60	20B-8		63B-15		66A-3		51A-10		
	20B-19		67C-42		66A-11	V530-240-803-60	31D-4		
	20B-23	V303-260-010-00	34E-11		66A-11	V580-140-502-80	31D-38		
	31D-28	V303-260-012-00	34E-30		67C-4	V580-140-503-20	67C-26		

DESCRIPTION	REF. NO.	DESCRIPTION	REF. NO.	DESCRIPTION	REF. NO.	DESCRIPTION	REF. NO.
ARM, PARKING	31D-35	BOLT/M12X 55	66A-2	CUSHION, RADIATOR	18A-11	LAMP, PILOT ASSY	64C-21
BAFFLE ASSY	18A-20	BOLT/M12X55	66A-6	CUSHION/RUBBER	20B-5	LAMP, PILOT B ASSY	64C-8
BAG, TOOL	71B-16	BONNET COMP	20A-1		63B-35	LAMP, PILOT C ASSY	64C-14
BALVE	64C-38	BOTTOM	31D-25	DRUM, WHEEL W6-18	52B-1	LAMP, WORK ASSY	64C-37
BAND, WIRE/250	65B-11	BOX, FUSE	65B-7	ELEMENT	18A-23	COMP	64C-45
BASE, FLASHER	65C-22	BRACKET, 2P LH COMP	34E-26	FENDER, LH	63B-1	LEAD	64C-2
BEARING, RB/6208	51A-18	BRACKET, 2P RH COMP	34E-27	FENDER, RH	63B-2	LENS	64C-9
BEARING, RB/6306	51A-17	BRACKET, LINK COMP	67C-2	FILTER	63B-42		64C-15
BOLT	20B-12	BRACKET, SEAT COMP	63B-33	FLASHER UNIT	65C-20		64C-23
BOLT, HINGE	20B-4	BRAKE, PARKING ASSY	31D-22	FORK	67C-23		64C-26
BOLT, SEWS (S)	64C-47	BREATHER ASSY	63B-40	FORK, BRACKET	67C-32		64C-39
BOLT, SET/154	66A-9	BULB/12V 20W	71B-19	FUNNEL	71B-17	LEVER	65C-14
BOLT, WING	18A-21	BULB/12V 25/25	71B-18	FUSE, 5A	65B-8	LEVER, SWITCH	65C-36
BOLT/M 6X 12	18A-31	BULB/12V 3W	64C-6	FUSE/15	71B-21	LIGHT	64C-24
	65B-14		64C-13	FUSE/5A	71B-20	LINK, FUSIBLE	65B-6
	65C-2		64C-19	GAN, GREASE	71B-14	LINK, LOWER	67C-1
BOLT/M 6X 16	18A-8		64C-22	GASKET	18A-24	LINK, TOP (RH) COMP	67C-18
BOLT/M 6X 20	63B-22	BULB/12V10W	64C-25		64C-4	LINK, TOP LH COMP	67C-17
	65C-24	BUSH/25X34X48	34E-31		64C-11	MARK, HANDLING	18A-25
BOLT/M 6X 25	65C-23	CABLE, METER	65C-39		64C-17	METAL, DIFF-CASE LH	34E-38
BOLT/M 6X 30	63B-23	CAP	18A-2		64C-41	METAL, DIFF-CASE RH	34E-39
BOLT/M 6X14	63B-28	CAP (M8)	63B-34	GASKET, BASE	64C-31	METAL, INPUT	34E-15
	64C-35	CAP, BLANK/M12	34E-25	GASKET, LENS	64C-28	METAL, PTO	34E-43
	34E-10		51A-12	GEAR, WHEEL/58	51A-14	METER, SPEED ASSY	65C-38
	34E-18	CAP, BLANK/M14	52B-5	GRILL	20B-11	MUFFLER	19A-1
	34E-42	CAP, OIL/30	63B-37	GRILLE, LIGHT	20B-15	NIPPLE, GREASE/ 1/8	31D-7
	34E-45	CAP, TIRE VALVE	52B-4	GRIP	31D-26	NIPPLE, GREASE/B-MGF	31D-36
BOLT/M 8X 12	19A-7	CASE, F T-MISSION	34E-1	GROMMET	65C-30	NUT	64C-46
	19A-16	CASE, TRANSMISSION	34E-2	GUARD, FAN	18A-4		65C-35
	65C-41	CHAIN, CHECK RH	67C-7	HANDLE, ADJ	67C-25	NUT, LH THREAD/M8	31D-17
BOLT/M 8X 16	20B-8	CHAIN, CHECK/148 COMP	67C-6	HARNES	64C-32	NUT, LOCK/16	67C-27
	20B-19	CHAIN, LW LINK	67C-40	HARNES NO. 11	65B-5	NUT, RING	65C-13
	31D-28	CLAMP	65C-40	HARNES, CLAMP	64C-33	NUT, TOP LINK LOCK	67C-44
	63B-6	CLAMP, HARNES	31D-19	HARNES, EARTH	64C-34	NUT/ M 8	63B-29
	63B-44		65B-10	HARNES, WIRE NO12	65B-9	NUT/M, 4	64C-29
BOLT/M 8X 20	63B-12	CLAMP, HARNES/150	65B-12	HARNES, WIRE NO5	65B-1	NUT/M, 6	65B-15
	63B-17	CLAMP, MAIN HARNES	65B-13	HARNES, WIRE/NO10	65B-4		65C-4
BOLT/M 8X 25	67C-36	CLAMP/32	19A-11	HITCH, TRAILER	71B-1		65C-27
BOLT/M 8X 30	64C-48	CLAMP/35	18A-16	HOLDER	64C-5	NUT/M, 8	19A-10
	67C-41	CLAMP/44	18A-17		64C-12		31D-18
BOLT/M 8X 35	18A-12	CLAMP/48	18A-28	HOLDER, LEVER	64C-18		31D-40
BOLT/M 8X 60	19A-12	CLEANER, AIR ASSY	18A-18	HOLDER, SHAFT	31D-27		63B-9
	34E-17		18A-29	HORN	31D-33		63B-15
BOLT/M08X 16	20B-23	COCK, WATER	18A-7	HOSE, A/ RUBBER	65C-1		64C-36
BOLT/M10X 16	31D-20	COVER	19A-4	HOSE, B/RUBBER	18A-26		64C-51
BOLT/M10X 45	51A-5	COVER, JOINT	63B-41	HOSE, LW/RUBBER	18A-27		67C-37
BOLT/M10X38	63B-32	COVER, MUFFLER COMP	34E-33	HOSE, UP/RUBBER	18A-14		67C-42
BOLT/M12X 25	67C-3	COVER, SIDE LH	19A-3	HOUSING, AXLE REAR/LH	18A-15	NUT/M, 10	34E-11
	34E-28	COVER, SIDE RH	20B-18	HUB/22X40X37 COMP	51A-1		51A-6
BOLT/M12X 30	51A-21	COVER, TAIL PIPE COMP	20B-22	KEY	51A-2		34E-30
	67C-15	COVER, UNDER COMP	19A-5	LAMP, PILOT A ASSY	67C-35		51A-7
BOLT/M12X 50	51A-4		19A-14		65C-17		66A-4
			20B-7		64C-1		66A-7

DESCRIPTION	REF. NO.	DESCRIPTION	REF. NO.	DESCRIPTION	REF. NO.	DESCRIPTION	REF. NO.
NUT/M, 12	66A-10	PLIERS/G150	71B-8	SPRING/HCI09	63B-31	WASHER PL/M12	67C-5
OILER	67C-9	PLUG, DRAIN	34E-23	STAY	64C-43	WASHER PL/M16	65C-29
PACKING	71B-15	PLUG, DRAIN (1/4)	51A-11	STAY, FENDER LH	63B-10		67C-31
PACKING, INPUT METAL	65C-34	PROTECTOR, FAN	18A-5	STAY, FENDER RH	63B-11	WASHER SP/M 3	65C-32
PACKING, R T- MISSION	34E-16	RADIATOR ASSY	64C-40	STAY, NO. LAMP	63B-27	WASHER SP/M 4	64C-30
PACKING, REAR AXLE	34E-3	REFLECTOR	64C-40	STUD/M10X 30	34E-4		65C-6
PACKING/RUBBER	51A-3	REST, ARM	64C-16	STUD/M10X 35	34E-5	WASHER SP/M 5	65C-9
PAN, DUST	63B-38	RIM	64C-42	STUD/M10X 40	34E-12	WASHER SP/M 6	18A-9
PEDAL, BRAKE LH	18A-19	RING, SNAP/22 C	31D-2	STUD/M10X 55	34E-13		18A-32
PEDAL, BRAKE RH	31D-3	RING, SNAP/25 C	34E-32	STUD/M12X 25	34E-6		20B-13
PIN 8X36	31D-6	RING, SNAP/30 C	51A-19	STUD/M12X 45	34E-7		63B-25
PIN ASSY	31D-4	RING, SNAP/80 C	51A-20	SWITCH, HORN	34E-14		65B-16
PIN, HAIR	71B-2	ROD	31D-23	SWITCH, KEY	65C-18		65C-3
	34E-37	ROD, ADJUST	31D-39	SWITCH, LEVER ASSY	65C-16	WASHER SP/M 8	65C-26
	63B-36	ROD, BRAKE	31D-16	SWITCH, PARKING	65C-19		19A-8
	67C-33	ROD, LIFT	67C-28	SWITCH, SAFETY	65C-28		19A-13
PIN, LINK	71B-5	ROD, LIFT LH	67C-22	SWITCH, STARTER	65C-5		19A-18
	67C-21	ROD, PACKING	31D-30	TIRE/4P 8-18	52B-2		20B-9
	67C-39	RUBBER, BAFFLE	64C-49	TUBE/ 8-18	52B-3		20B-24
	71B-3	SCREW	65C-37	TURNBUCKLE	67C-19		31D-29
PIN, SEAT SET	63B-39	SCREW, PLUS/M4X0.7X16	64C-27	TURNBUCKLE 12 COMP	67C-8		34E-19
PIN, SPLIT/2.0X20	31D-12	SCREW/M 3X 6	64C-27	WASHER	63B-30		63B-7
	31D-15	SCREW/M 4X 6	65C-33		64C-3		63B-13
PIN, SPLIT/2.5X20	34E-36	SCREW/M 4X 8	65C-21		64C-10		63B-18
	67C-11	SCREW/M 5X 8	65C-8		64C-16		67C-43
PIN, SPLIT/3.0X20	31D-32	SCREW/M 5X15	65C-11	WASHER PL/M 4	65C-12	WASHER SP/M08	63B-45
	31D-42	SCREW/M4X20	65C-15	WASHER PL/M 5	65C-7		65C-42
PIN, SPLIT/4.0X25	67C-30	SCREW/M4X4	64C-44	WASHER PL/M 6	65C-10		31D-21
PIN, SPRING 5X28	31D-38	SCREW/M6X16	20B-16		18A-10		34E-8
PIN, SPRING 8X28	67C-26	SCREWDRIVER ASSY	71B-9	WASHER PL/M 8	20B-14		51A-9
PIN, ST B/ 8X14	31D-37	SEAL, OIL/QLF488011.5	51A-16		63B-24		34E-29
PIN, ST B/ 8X16	34E-21	SEAL, RING	34E-44		65C-25		51A-8
	51A-10	SEAL/(30X15X170)	20B-3		18A-13		51A-22
	67C-20	SEAL/(30X20X215)	20B-2		19A-9		63B-4
PIN, TOP LINK	31D-10	SEAT	63B-20		19A-17		66A-3
PIN, YOKE A	31D-13	SEAT, A	63B-21		20B-10		66A-11
PIN, YOKE B	67C-10	SHACKLE	67C-12		20B-21		67C-4
PIN/10X32	67C-29	SHAFT, BRAKE	31D-1		20B-25		67C-16
PIN/16X44	71B-34	SHAFT, PARKING	31D-34		31D-14	WASHER, SEAL	18A-22
PIN/16X63	71B-4	SHAFT, WHEEL	51A-13		31D-31	WASHER, SEAL/16	34E-24
PIN/19X214	67C-38	SHIM, DIFF-CASE A	34E-40		34E-20	WASHER/15X24X2	20B-6
PIN/22X384	34E-34	SHIM, DIFF-CASE B	34E-41		63B-8	WASHER/M8	34E-46
PIN/8X212	34E-35	SOCKET	64C-7		63B-14	WEIGHT, BALANCE	66A-5
PIN/8X220	19A-2	SPANNER, BOX/17	64C-20		63B-19	WEIGHT, F. WHEEL SET	66A-1
PIPE, TAIL	18A-15	SPANNER/ 8X10	71B-6		63B-46	WEIGHT, R. WHEEL SET	66A-8
PIPE, VINYL	18A-3	SPANNER/12X14	71B-10	WASHER PL/M08	64C-50	WIRE HARNESS NO 8	65B-2
PIPE/123	51A-15	SPANNER/13X17	71B-11		19A-6	WRENCH, SOCKET/17X19	65B-3
PLATE	63B-26	SPANNER/19X22	71B-12		31D-11		71B-7
	67C-13	SPRING	71B-13		31D-41		31D-9
PLATE, HINGE	67C-14	SPRING, PARKING BRAKE	31D-24	WASHER PL/M10	34E-9		31D-8
PLATE, SEAL COMP	20B-17	SPRING, SET	31D-5	WASHER PL/M12	63B-5		
	18A-30		18A-6		66A-12		



