

Directions for use of Parts Catalogue

1. Applicable model of machines

All component and option parts used for SMM54 – FE4, F23E4, ME4, M17E4, M17HE4, M23E4, M23HE4 mower are listed in this parts catalogue.

- NOTES : F FOR SF200/230
 F 2 3 FOR SF200/230 (STD)
 M FOR TM (STD)
 M 1 7 FOR TM215/217
 M 1 7 H FOR TM215/217 (HST), TMG18
 M 2 3 FOR TM223
 M 2 3 H FOR TM223 (HST)
 E 4 EUROPE AND OCEANIA

2. Explanation for head paragraph

KEY	PART CODE	DESCRIPTION	S P C	TYPE OF MODEL						I T C	C O L	G R P	REMARKS
				SSM48M	SSM48F	SSM48G	SRM48M	SRM48F	SRM48G				
1	8595-211-001-20	CASE/UPPER	*	1									
1A	8657-201-081-00	CASE/UPPER	*	2			1						
2	8595-211-002-10	CASE/LOWER	*	1			1						
3	V523-100-801-80	PIN	*	2			2						
4	V211-260-803-00	BOLT, SEWS	*	6			4						
			*	2			2						
			*	2			2						
			*	2			2						
			*	1			1						

- ① KEY shows the location of parts diagramed in the illustration.
- ② Parts numbers begin with `V` and `W` are standard parts of the market.
- ③ `LH` and `RH` on the parts name are described against the moving direction of the machine or are described on the condition how to install parts on the machines.
- ④ SPC : The following symbol classifies parts to be used for machines.
 - `*` means standard parts.
 - `T` shows that the parts can be installed as optional parts.

‘R’ shows that the parts can be used as applicable parts to replace originally equipped parts.

- ⑤ Upper column: QTY shows the number of parts to be used for one unit of machine.

‘M’ is indicated for parts supplied by a meter long.

‘ℓ’ is indicated for parts supplied by liter.

‘AR’ is indicated for parts need to be adjusted or regulated.

Lower column: serial number

– 229 means serial number up to 229.

230 – means serial number 230 and after.

- ⑥ ITC : Interchangeability

‘1’ … OLD ← NEW

New parts can be used in place of the old parts.

‘2’ … OLD → NEW

Old parts can be used in place of the new parts.

‘3’ … OLD →← NEW

Old parts and new parts can not be replaced each other.

- ⑦ COL : Color code

Color is signified with color code number for colored parts.

Please see the color list shown in the next page.

- ⑧ GRP : Parts shown in this column can be replaced by SET parts.

Example : Parts marked Ⓐ can be replaced by parts marked Ⓑ, and Ⓒ for Ⓓ, so the rest follow in the same alphabetical order.

- ⑨ Remarks

* Other maker's part code number is shown in this column.

* When Fig. No. is shown in the Remark column of SET parts or ASSY parts, each of their component parts are listed in said Fig. No.

3. Color :

The following colors are used color parts.

COLOR CODE	C O L O R	SPRAY TYPE CODE NUMBER	PAINTS 4K DRUM	PAINTS 16K DRUM
4 G	CRYSTAL BLUE	1300-957-001-10	1300-957-003-00	1300-957-004-00
7 F	MIRROR BLACK	1300-954-001-10	1300-954-003-00	1300-954-004-00

NOTE : Color code is signified only for the parts assigned by the maker as color parts.

4. Serial Numbers:

For chassies serial number is shown on the LABEL.

Please see

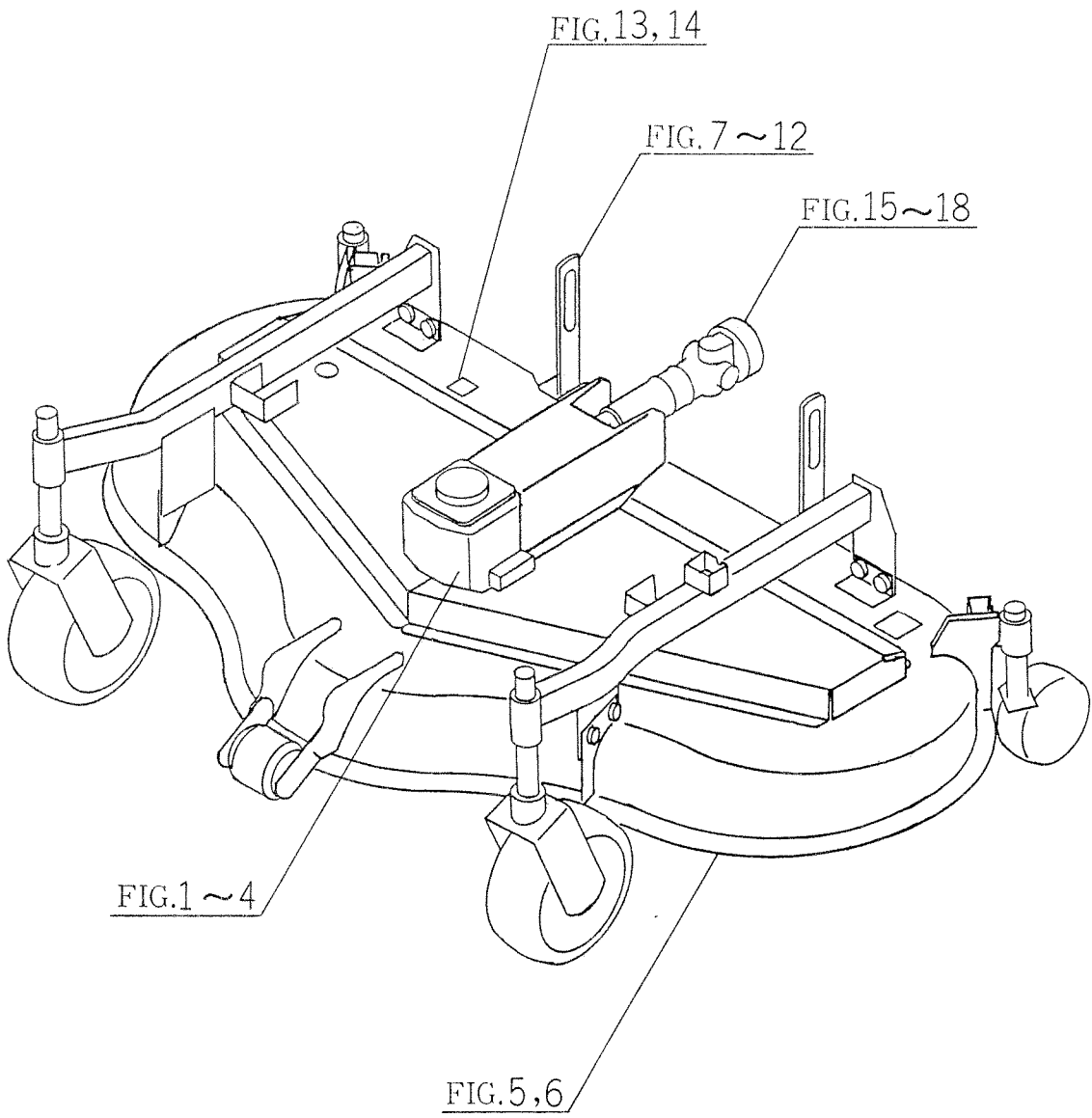


5. Parts Order

- 1) Parts numbers listed in the parts catalogue are all registered in "ISEKI on-line computer".
- 2) When you order parts, please make sure of correct numbers.
- 3) When substitute parts is available, the part number ordered will be automatically turned to a new part number.
- 4) Please be sure to use "ISEKI GENUINE PARTS".

Any other similar parts other than ISEKI parts when used may cause a trouble that makes us unable to repair or guarantee the warrant.

	M	SS SS MM MM	S M						
	O	MMEMM	EHMEH						
	D	55455	4E54E						
	E	44 44	44 4						
	L	FF MM	M						
		E2 E1	2						
		43 47	3						
FIG.	BLOCK								
1	8597-101 -0100		*						
1	8597-101A-0100		* *						
1	8657-101C-0100		*						
1	8658-201B-0100	*	** **						
2	8654-101B-0100	* *							
2	8658-201A-0100	* *							
3	8658-202 -0100	* **	** **						
3	8657-203 -0100	* **	** **						
4	8658-301 -0100	* **	** **						
4	8658-306 -0100	* **	** **						
5	8658-402A-0100	* *							
5	8658-407A-0100	* *							
6	8658-402B-0100	*	** **						
6	8658-407B-0100	*	** **						
7	8658-501 -0100	* *							
8	8658-501C-0100	*	** **						
9	8654-510B-0100	*							
10	8657-608A-0100		**						
10	8658-608B-0100		**						
11	8657-610 -0100		**						
11	8657-610A-0100		**						
12	8657-611 -0100		** **						
13	8658-901A-0100		** **						
14	8658-901B-0100	* **							
15	8597-101-500-0A		*						
16	8597-101-510-0A		* *						
17	8654-101-410-0A	* *							
18	8657-101-810-0A		*						

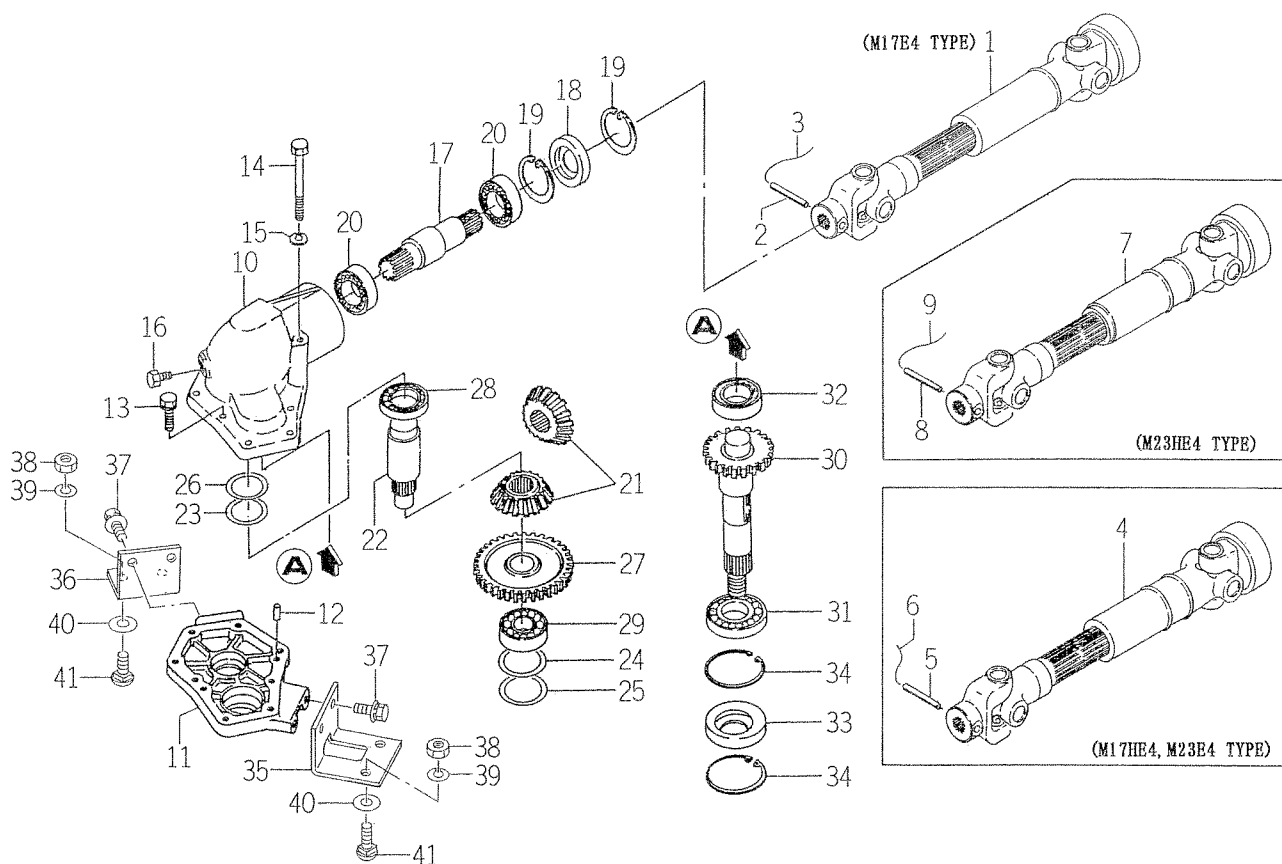


C O N T E N T S

SMM54 - F, M

JOINT (UNIVERSAL), CASE (BEVEL) SYSTEM (M TYPE)	Fig. 1
JOINT (UNIVERSAL), CASE (BEVEL) SYSTEM (F TYPE)	Fig. 2
PULLEY, BELT SYSTEM	Fig. 3
METAL, BLADE (DUMMY) SYSTEM	Fig. 4
MOWER DECK, BELT COVER SYSTEM (F TYPE)	Fig. 5
MOWER DECK, BELT COVER SYSTEM (M TYPE)	Fig. 6
GAUGE WHEEL SYSTEM (F TYPE)	Fig. 7
GAUGE WHEEL SYSTEM (M TYPE)	Fig. 8
LIFT SYSTEM (FE4 TYPE)	Fig. 9
LINK SYSTEM (M17, M23 TYPE)	Fig. 10
CYLINDER SYSTEM (M17, M23 TYPE)	Fig. 11
HEIGHT ADJUST SYSTEM (M17, M23 TYPE)	Fig. 12
LABEL (M17, M23 TYPE)	Fig. 13
LABEL (F, ME4 TYPE)	Fig. 14
COMPONENT PARTS FOR 8597 - 101 - 500 - 00 ON Fig.1	Fig. 15
COMPONENT PARTS FOR 8597 - 101 - 510 - 00 ON Fig.1	Fig. 16
COMPONENT PARTS FOR 8654 - 101 - 410 - 00 ON Fig.2	Fig. 17
COMPONENT PARTS FOR 8657 - 101 - 810 - 00 ON Fig.1	Fig. 18

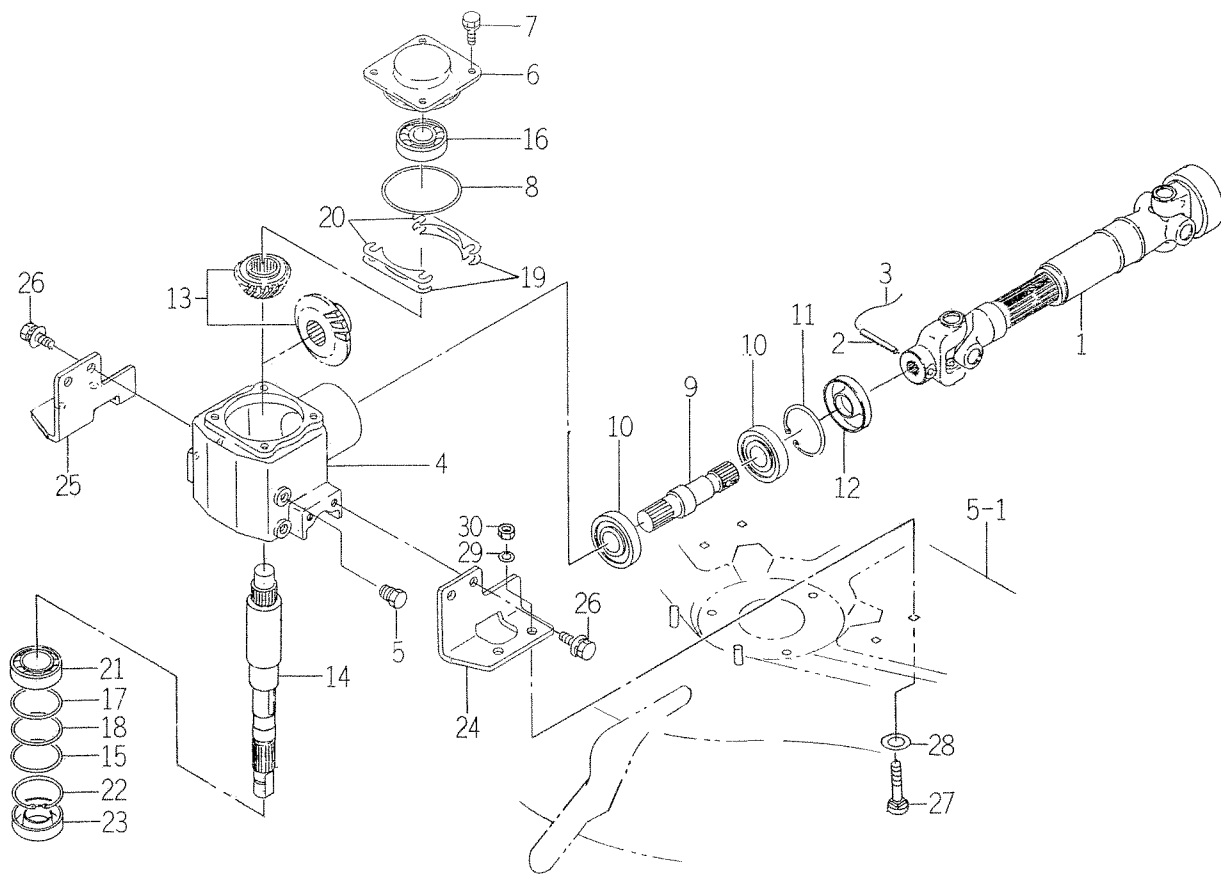
FIG. 1 JOINT (UNIVERSAL), CASE (BEVEL) SYSTEM (M TYPE)



8597-101

KEY	PART CODE	DESCRIPTION	S P C	TYPE OF MODEL					I T C	C O L	G R P	REMARKS
				SMM54F E4	SMM54F 23	SMM54M E4	SMM54M 17	SMM54M 23				
1	8597-101-500-00	JOINT/UNIVERSAL ASSY	*				1				FIG 015	
2	V580-140-604-00	PIN, SPRING/6 X40 W	*				1					
3		WIRE	*				1					
4	8597-101-510-00	JOINT/UNIVERSAL ASSY	*				1	1			FIG 016	
5	V580-140-604-00	PIN, SPRING/6 X40 W	*				1	1				
6		WIRE	*				1	1				
7	8657-101-810-00	JOINT/UNIVERSAL ASSY	*					1			FIG 018	
8	V580-140-604-00	PIN, SPRING/6 X40 W	*					1				
9		WIRE	*					1				
10	8657-201-081-00	CASE/UPPER	*			1	1	1				
11	8595-211-002-10	CASE/LOWER	*			1	1	1				
12	V523-100-801-80	PIN	*			2	2	2				
13	V211-260-803-00	BOLT, SEMS	*			6	6	6				
14	V201-260-808-00	BOLT/M 8X80	*			2	2	2				
15	V401-160-008-00	WASHER, SP/M 8	*			2	2	2				
16	7955-201-026-00	PLUG, DRAIN (1/4)	*			1	1	1				
17	8657-201-082-00	SHAFT/INPUT	*			1	1	1				
18	8657-201-083-00	SEAL/OIL	*			1	1	1				
19	V707-140-062-00	RING/SNAP	*			2	2	2				
20	1650-219-009-00	BEARING/BALL	*			2	2	2				
21	8595-211-200-20	GEAR/BEVEL/21-2 SET	*			1	1	1				
22	8595-211-004-20	SHAFT/COUNTER	*			1	1	1				
23	8595-211-005-10	SHIM/O. 2	*			1	1	1				
24	8595-211-010-00	SHIM/O. 2	*			1	1	1				
25	8595-211-021-00	SHIM/O. 1	*			1	1	1				
26	8595-211-022-00	SHIM/O. 1	*			1	1	1				
27	8654-201-081-00	GEAR/SPUR/32	*			1	1	1				
28	V600-110-600-50	BEARING, RB/6005	*			1	1	1				
29	8657-201-084-00	BEARING/BALL	*			1	1	1				
30	8654-201-082-10	GEAR/SPUR/24	*			1	1	1				

FIG. 2 JOINT (UNIVERSAL), CASE (BEVEL) SYSTEM (F TYPE)

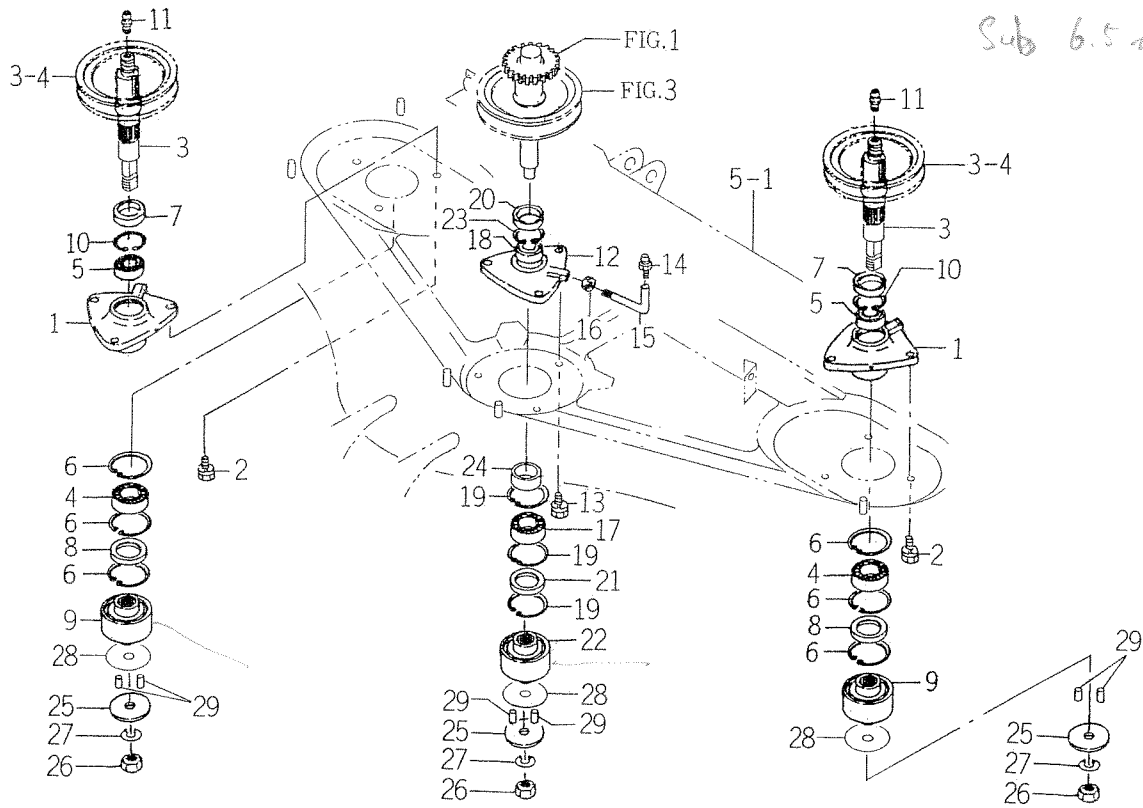


8654-101B

KEY	PART CODE	DESCRIPTION	S P C	TYPE OF MODEL					I T C	C O L	G R P	REMARKS
				SMM54F E4	SMM54F 23	SMM54M E4	SMM54M 17	SMM54M 23				
1	8654-101-410-00	JOINT/UNIVERSAL SET	*	1	1						FIG 017	
2	V580-140-804-00	PIN, SPRING/8 X40 W	*	1	1							
3		WIRE	*	1	1							
4	8595-201-011-00	CASE/BEVEL	*	1	1							
5	7955-201-026-00	PLUG, DRAIN (1/4)	*	2	2							
6	8595-201-012-00	COVER/CASE	*	1	1							
7	V211-260-801-60	BOLT, SEMS (S) M8X16	*	4	4							
8	V721-103-108-00	O-RING/G80	*	1	1							
9	8595-201-013-00	SHAFT/INPUT	*	1	1							
10	1594-218-001-00	BEARING/BALL 6305SH2	*	2	2							
11	V707-140-062-00	RING/SNAP	*	1	1							
12	8595-201-025-00	SEAL/OIL	*	1	1							
13	8654-201-410-10	GEAR/BEVEL/25-2 SET	*	1	1							
14	8654-201-041-10	SHAFT/OUTPUT	*	1	1							
15	8595-201-015-00	WASHER/45X55X01	*	1	1							
16	V600-110-630-40	BEARING, RB/6304	*	1	1							
17	8595-201-016-00	SHIM/O. 1	*	1	1							
18	8595-201-017-00	SHIM/O. 2	*	1	1							
19	8595-201-021-00	SHIM/O. 1	*	1	1							
20	8595-201-022-00	SHIM/O. 2	*	1	1							
21	V600-110-600-60	BEARING, RB 6006	*	1	1							
22	V707-140-055-00	RING/SNAP	*	1	1							
23	V744-130-551-20	SEAL, OIL/TC305512	*	1	1							
24	8658-201-042-00	BRACKET/CASE/LH	*	1	1							
25	8658-201-043-00	BRACKET/CASE/RH	*	1	1							
26	V211-661-002-00	BOLT/M10X20	*	4	4							
27	8597-301-002-00	BLOT/M10X25	*	4	4							
28	V411-260-014-00	WASHER, PL/M14	*	4	4							
29	V401-160-010-00	WASHER, SP/M10	*	4	4							
30	V304-260-010-00	NUT	*	4	4							

FIG. 4 METAL, BLADE (DUMMY) SYSTEM

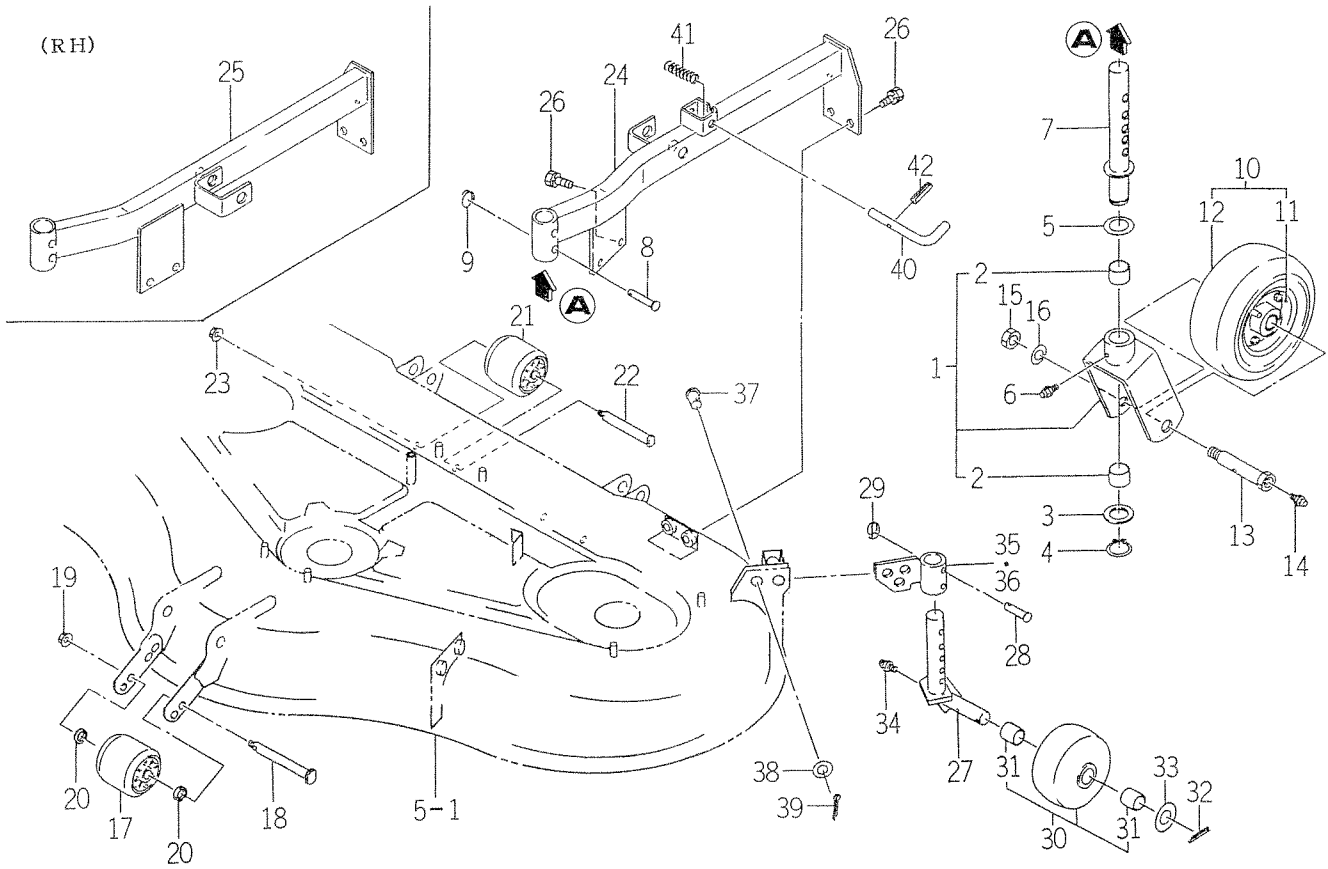
Main 8 mm
Sub 6.5 mm



8658-301

KEY	PART CODE	DESCRIPTION	S P C	TYPE OF MODEL					I T C	C O L	G R P	REMARKS
				SMM54F E4	SMM54F 23	SMM54M E4	SMM54M 17	SMM54M 23				
1	8657-301-004-00	METAL/SIDE	*	2	2	2	2	2				
2	V211-261-002-50	BOLT (S) M10X25	*	6	6	6	6	6				
3	8654-301-081-10	SHAFT/SIDE	*	2	2	2	2	2				
4	1594-221-001-00	BEARING/BALL 6205SH2	*	2	2	2	2	2				
5	V600-110-690-80	BEARING	*	2	2	2	2	2				
6	V705-140-052-00	RING, SNAP/52 C	*	6	6	6	6	6				
7	8654-301-004-00	SEAL/OIL	*	2	2	2	2	2				
8	V744-135-520-80	SEAL, OIL/TC35528	*	2	2	2	2	2				
9	8658-301-001-00	COLLAR/BRADE	*	2	2	2	2	2				
10	V707-140-062-00	RING/SNAP	*	2	2	2	2	2				
11	V760-150-000-00	NIPPLE, GREASE	*	2	2	2	2	2				
12	8657-301-005-00	METAL/CENTER	*	1	1	1	1	1				
13	V211-261-002-50	BOLT (S) M10X25	*	3	3	3	3	3				
14	V760-150-000-00	NIPPLE, GREASE	*	1	1	1	1	1				
15	8657-301-009-00	PIPE/GREASE	*	1	1	1	1	1				
16	V304-260-010-00	NUT	*	1	1	1	1	1				
17	1594-221-001-00	BEARING/BALL 6205SH2	*	1	1	1	1	1				
18	V600-110-690-80	BEARING	*	1	1	1	1	1				
19	V705-140-052-00	RING, SNAP/52 C	*	3	3	3	3	3				
20	8654-301-004-00	SEAL/OIL	*	1	1	1	1	1				
21	V744-135-520-80	SEAL, OIL/TC35528	*	1	1	1	1	1				
22	8658-301-001-00	COLLAR/BRADE	*	1	1	1	1	1				
23	V707-140-062-00	RING/SNAP	*	1	1	1	1	1				
24	8657-301-008-00	COLLER/26X34X15	*	1	1	1	1	1				
25	8595-306-005-00	WASHER/20X60X06	*	3	3	3	3	3				
26	8595-306-007-00	NUT/M20X1.5	*	3	3	3	3	3				
27	V401-160-020-00	WASHER, SP/M20	*	3	3	3	3	3				
28	8595-306-006-00	SHIM/1.2	*	3	3	3	3	3				
29	8658-306-003-00	PIN/PARALLEL	*	6	6	6	6	6				

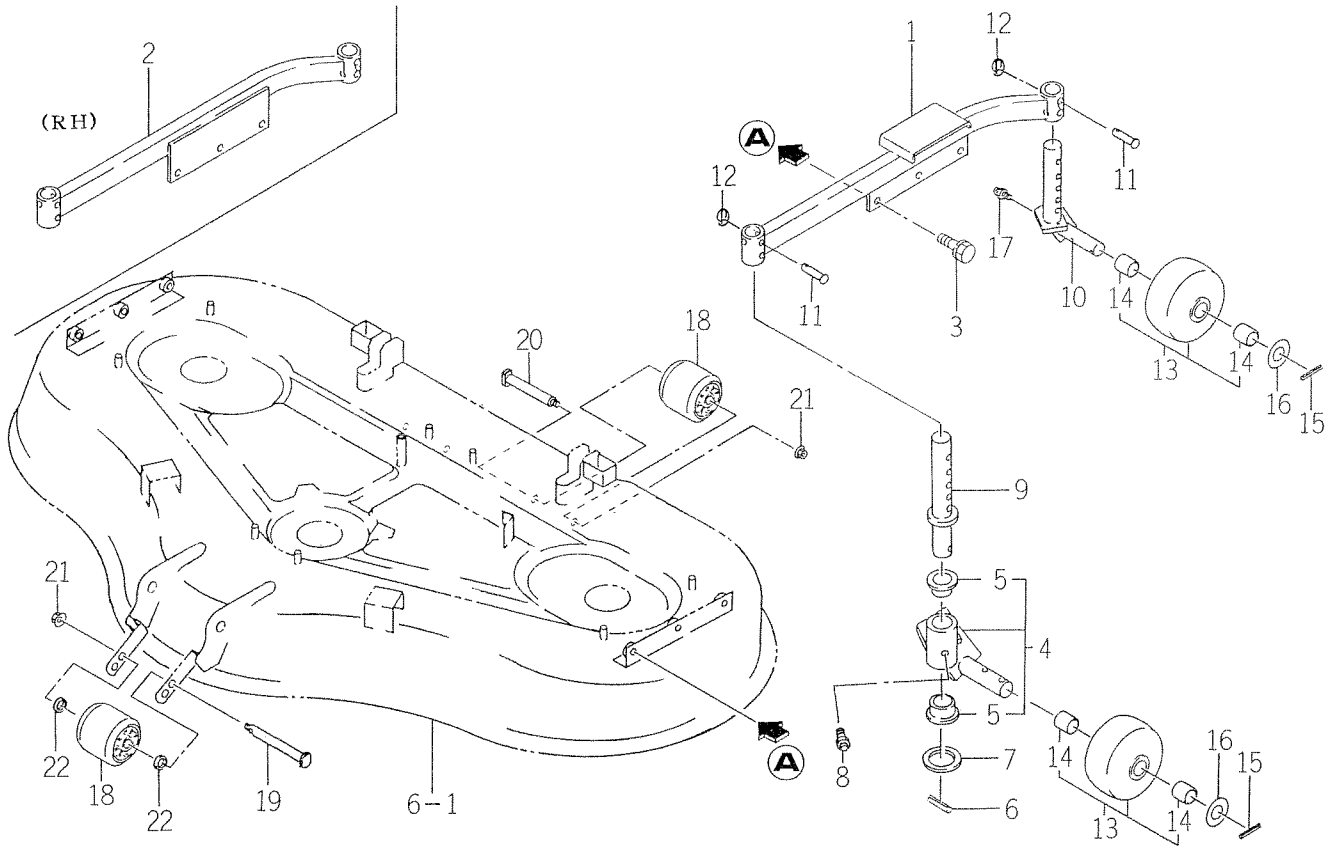
FIG. 7 GAUGE WHEEL SYSTEM (F TYPE)



8658-501

KEY	PART CODE	DESCRIPTION	S P C	TYPE OF MODEL					I T C	C O L	G R P	REMARKS
				SMM54F E4	SMM54F 23	SMM54M E4	SMM54M 17	SMM54M 23				
1	8595-501-310-00	FORK/WHEEL ASSY	*	2	2							
2	8654-501-201-00	BUSH/30X34X20	*	4	4							
3	3670-701-010-00	WASHER/30X50X05	*	2	2							
4	V704-140-030-00	RING, SNAP/30 C	*	2	2							
5	1427-432-005-00	COLLAR, THRUST	*	2	2							
6	V760-150-000-00	NIPPLE, GREASE	*	2	2							
7	8595-501-280-00	PIN/GAUGE COMP	*	2	2							
8	2144-106-005-00	PIN/10X53	*	2	2							
9	8654-501-006-10	SPRING/CLIP	*	2	2							
10	8595-501-320-00	WHEEL/GAUGE ASSY	*	2	2							
11	8595-501-350-00	WHELL ASSY	*	2	2							
12	8595-501-360-00	TIRE/8X3.00-4 ASSY	*	2	2							
13	8595-501-007-00	PIN/20X112	*	2	2							
14	V760-150-000-00	NIPPLE, GREASE	*	2	2							
15	V304-460-016-00	NUT/M16	*	2	2							
16	V401-160-016-00	WASHER, SP/M16	*	2	2							
17	8595-501-001-10	WHEEL/GAUGE/FRONT	*	1	1							
18	8654-501-041-00	PIN/12X133	*	1	1							
19	V362-260-008-00	NUT/WASHER	*	1	1							
20	3664-416-072-00	WASHER/13X17X10	*	2	2							
21	8595-501-001-10	WHEEL/GAUGE/FRONT	*	2	2							
22	8595-505-051-20	PIN/12X108	*	2	2							
23	V362-260-008-00	NUT/WASHER	*	2	2							
24	8658-501-410-00	ARM/GAUGE/LH COMP	*	1	1							
25	8658-501-420-00	ARM/GAUGE/RH COMP	*	1	1							
26	V211-261-002-50	BOLT (S) M10X25	*	8	8							
27	8657-501-540-01	FORK/WHEEL/R COMP	*	2	2				4G			
28	8595-505-002-00	PIN/08X44	*	2	2							
29	1427-317-003-00	CLIP, PIN	*	2	2							
30	8657-501-530-00	WHEEL/GAUGE ASSY	*	2	2							

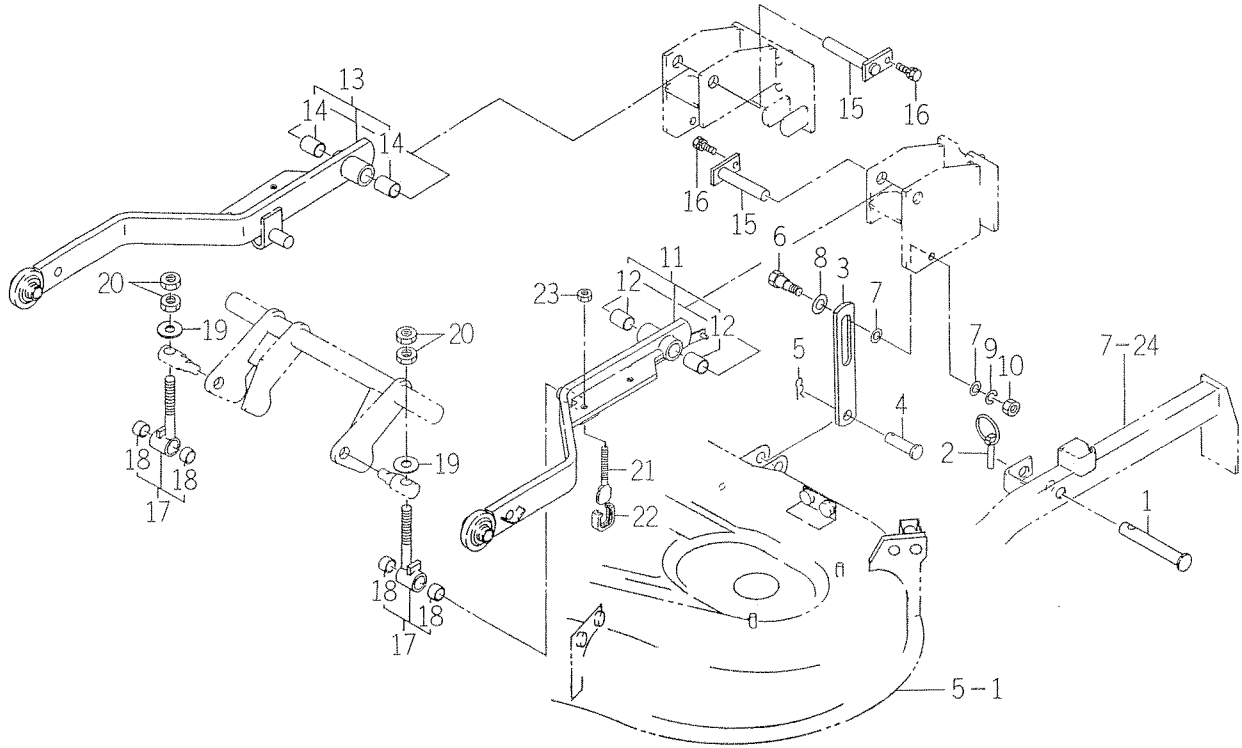
FIG. 8 GAUGE WHEEL SYSTEM (M TYPE)



8658-501C

KEY	PART CODE	DESCRIPTION	S P C	TYPE OF MODEL					I T C	C O L	G R P	REMARKS
				SMM54F E4	SMM54F 23	SMM54M E4	SMM54M 17	SMM54M 23				
1	8658-501-210-00	ARM/GAUGE/LH COMP	*			1	1	1				
2	8658-501-220-00	ARM/GAUGE/RH COMP	*			1	1	1				
3	V211-261-002-50	BOLT (S) M10X25	*			6	6	6				
4	8657-501-500-00	FORK/WHEEL ASSY	*			2	2	2				
5	8657-501-501-00	BUSH/26X30X20	*			4	4	4				
6	V580-140-504-00	PIN, SPRING/5 X40 W	*			2	2	2				
7	1564-275-007-00	WASHER/27X40X2	*			2	2	2				
8	V760-150-000-00	NIPPLE, GREASE	*			2	2	2				
9	8657-501-520-10	PIN/GAUGE COMP	*			2	2	2				
10	8657-501-540-00	FORK/WHEEL/R COMP	*			2	2	2		7F		
11	8595-505-002-00	PIN/08X44	*			4	4	4				
12	1427-317-003-00	CLIP, PIN	*			4	4	4				
13	8657-501-530-00	WHEEL/GAUGE ASSY	*			4	4	4				
14	8654-501-283-00	BUSH/22X25X25	*			8	8	8				
15	V580-140-504-00	PIN, SPRING/5 X40 W	*			4	4	4				
16	V411-260-022-00	WASHER, PL/M22	*			4	4	4				
17	V760-150-000-00	NIPPLE, GREASE	*			4	4	4				
18	8595-501-001-10	WHEEL/GAUGE/FRONT	*			3	3	3				
19	8654-501-041-00	PIN/12X133	*			1	1	1				
20	8595-505-051-20	PIN/12X108	*			2	2	2				
21	V363-260-008-00	NUT, LOCK/M8	*			3	3	3				
22	3664-416-072-00	WASHER/13X17X10	*			2	2	2				

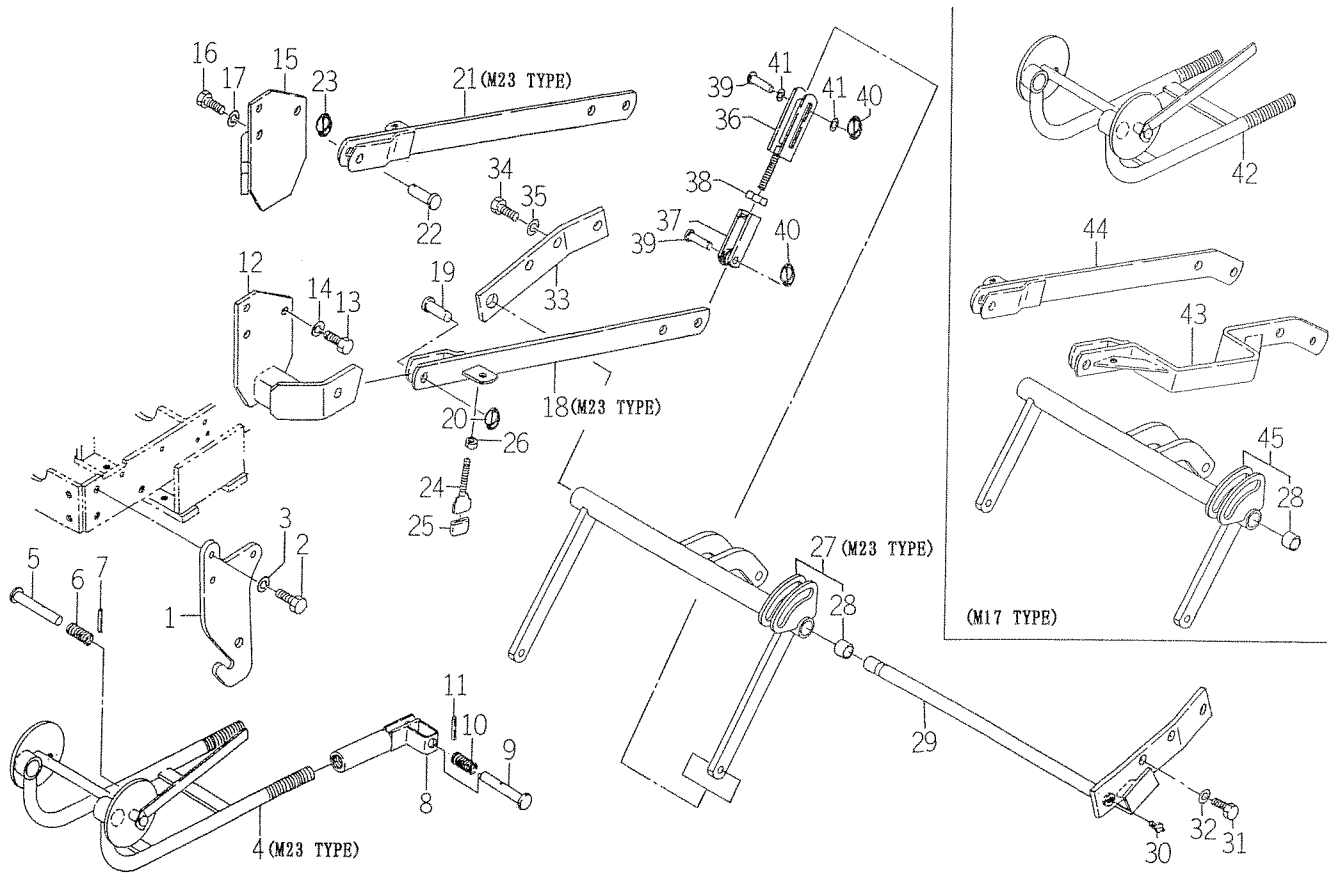
FIG. 9 LIFT SYSTEM (FE4 TYPE)



8654-510B

KEY	PART CODE	DESCRIPTION	S P C	TYPE OF MODEL					I T C	C O L	G R P	REMARKS
				SMM54F E4	SMM54F 23	SMM54M E4	SMM54M 17	SMM54M 23				
1	8595-510-004-00	PIN/19X135	*		2							
2	1421-502-002-00	PIN, LINK	*		2							
3	8654-510-041-00	HOLDER/MOWER	*		2							
4	8595-608-083-00	PIN/16X65	*		2							
5	7957-405-003-00	PIN, HAIR	*		2							
6	8595-510-002-00	BOLT/M12X50	*		2							
7	V411-260-012-00	WASHER /M12	*		4							
8	V411-260-016-00	WASHER / M16	*		2							
9	V401-160-012-00	WASHER, SP/M12	*		2							
10	V304-460-012-00	NUT/M12	*		2							
11	8654-510-430-00	ARM/LH ASSY	*		1							
12	8595-510-391-00	BUSH/20X23X30	*		2							
13	8654-510-440-00	ARM/RH ASSY	*		1							
14	8595-510-391-00	BUSH/20X23X30	*		2							
15	8595-510-370-00	PIN COMP	*		2							
16	V211-561-002-00	BOLT/M10X20	*		2							
17	8595-510-440-00	ROD/LIFT ASSY	*		2							
18	8595-510-441-00	BUSH/20X23X15	*		4							
19	8654-510-012-10	WASHER/16X40X05	*		2							
20	V304-460-016-00	NUT/M16	*		4							
21	8595-608-870-00	STOPPER COMP	*		2							
22	1593-101-012-00	STOPPER	*		2							
23	V304-260-012-00	NUT/M12	*		2							

FIG. 10 LINK SYSTEM (M17, M23 TYPE)



8657-608A

KEY	PART CODE	DESCRIPTION	S P C	TYPE OF MODEL					I T C	C O L	G R P	REMARKS
				SMM54F E4	SMM54F 23	SMM54M E4	SMM54M 17	SMM54M 23				
1	8595-608-081-00	BRACKET/FRONT	*				2	2				
2	V201-361-203-00	BOLT/M12X30	*				6	6				
3	V401-160-012-00	WASHER, SP/M12	*				6	6				
4	8657-608-810-00	ARM/FRONT COMP	*					1				
5	8595-608-082-00	PIN/16X96	*				1	1				
6	1560-601-028-00	SPRING/HCO42	*				1	1				
7	V580-140-504-00	PIN, SPRING/5 X40 W	*				1	1				
8	8595-608-820-00	HITCH/ARM COMP	*				2	2				
9	8595-608-082-00	PIN/16X96	*				2	2				
10	1560-601-028-00	SPRING/HCO42	*				2	2				
11	V580-140-504-00	PIN, SPRING/5 X40 W	*				2	2				
12	8657-608-850-00	BRACKET/MID/LH COMP	*				1	1				
13	V203-361-003-50	BOLT	*				3	3				
14	V401-160-010-00	WASHER, SP/M10	*				3	3				
15	8657-608-860-00	BRACKET/MID/RH COMP	*				1	1				
16	V203-361-003-50	BOLT	*				3	3				
17	V401-160-010-00	WASHER, SP/M10	*				3	3				
18	8657-608-820-00	ARM/MID/LH COMP	*					1				
19	8657-608-052-00	PIN/16X43	*				1	1				
20	1427-317-003-00	CLIP, PIN	*				1	1				
21	8657-608-830-00	ARM/MID/RH COMP	*					1				
22	8657-608-052-00	PIN/16X43	*				1	1				
23	1427-317-003-00	CLIP, PIN	*				1	1				
24	8595-608-870-00	STOPPER COMP	*				2	2				
25	1593-101-012-00	STOPPER	*				2	2				
26	V304-260-012-00	NUT/M12	*				2	2				
27	8657-608-870-00	LINK/REAR ASSY	*					1				
28	8654-501-283-00	BUSH/22X25X25	*				2	2				
29	8657-608-880-00	BRACKET/REAR/LH COMP	*				1	1				
30	V762-150-000-00	NIPPLE, GREASE/B-M6F	*				2	2				

NUMERICAL INDEX

8658-097-100-00

PART CODE	FIG. KEY	PART CODE	FIG. KEY	PART CODE	FIG. KEY
A101-212-003-00	12 11	V401-160-010-00	10 14	V707-140-055-00	1 34
K182-002-002-00	11 6		10 17		2 22
K182-032-000-00	11 4	V401-160-012-00	9 9	V707-140-062-00	1 19
K182-032-001-00	11 5		10 3		2 11
K182-032-002-00	11 7		10 32		4 10
K182-032-003-00	11 8		10 35		4 23
V120-264-000-80	12 14		11 3	V721-103-108-00	2 8
V201-260-808-00	1 14	V401-160-016-00	3 7	V744-130-551-20	2 23
V201-361-203-00	10 2		7 16	V744-135-520-80	4 8
	10 31	V401-160-020-00	4 27		4 21
	10 34	V411-260-012-00	9 7	V760-150-000-00	3 15
	11 2		10 41		4 11
V203-361-003-50	10 13		12 3		4 14
	10 16	V411-260-014-00	1 40		7 6
V211-260-801-60	2 7		2 28		7 14
V211-260-803-00	1 13	V411-260-016-00	7 38		7 34
V211-261-002-50	4 2		9 8		8 8
	4 13	V411-260-022-00	7 33		8 17
	7 26		8 16	V762-150-000-00	10 30
	8 3	V500-163-002-50	7 39	1342-402-006-00	11 15
V211-360-802-50	12 12	V500-163-003-50	12 4	1421-502-002-00	9 2
V211-361-002-00	1 37	V523-100-801-80	1 12	1427-317-003-00	7 29
V211-561-002-00	9 16	V580-140-402-50	12 9		8 12
V211-661-002-00	2 26	V580-140-404-00	7 42		10 20
V304-260-008-00	3 18	V580-140-504-00	5 4		10 23
V304-260-010-00	1 38		6 4		10 40
	2 30		7 32		11 12
	4 16		8 6	1427-432-005-00	7 5
V304-260-012-00	9 23		8 15	1434-211-004-00	3 3
	10 26		10 7	1560-601-028-00	5 3
	12 6		10 11		6 3
V304-260-016-00	10 38	V580-140-604-00	1 2		10 6
V304-460-012-00	9 10		1 5		10 10
V304-460-016-00	3 8		1 8	1564-275-007-00	8 7
	7 15	V580-140-804-00	2 2	1593-101-012-00	9 22
V362-260-008-00	9 20	V600-110-600-50	1 28		10 25
	5 9	V600-110-600-60	2 21	1593-901-015-00	13 7
	5 11	V600-110-630-40	2 16		14 7
	6 9	V600-110-690-80	4 5	1594-218-001-00	2 10
	7 19		4 18	1594-221-001-00	4 4
	7 23	V704-140-016-00	3 13		4 17
V363-260-008-00	8 21	V704-140-017-00	3 12	1608-206-240-00	11 9
V401-160-008-00	1 15	V704-140-030-00	7 4	1608-206-241-00	11 10
V401-160-010-00	1 39	V705-140-052-00	4 6	1650-219-009-00	1 20
	2 29		4 19	1675-506-002-00	11 16

8658-097-100-00

PART CODE	FIG. KEY		PART CODE	FIG. KEY		PART CODE	FIG. KEY	
1682-408-220-00	11	13	8595-306-007-00	4	26	8654-101-212-00	16	4
2144-106-005-00	7	8	8595-407-003-00	5	10	8654-101-221-00	17	1
2149-602-012-00	5	6	8595-501-001-10	7	17	8654-101-222-00	16	3
	5	8		7	21	8654-101-230-00	15	5
	6	6		8	18		16	5
	6	8	8595-501-007-00	7	13		17	3
2500-901-014-30	13	5	8595-501-008-00	7	37		17	8
	14	5	8595-501-280-00	7	7		18	5
2500-901-027-00	13	1	8595-501-310-00	7	1	8654-101-232-00	15	6
	14	1	8595-501-320-00	7	10		16	6
3621-211-003-00	3	14	8595-501-350-00	7	11		17	4
3664-416-072-00	7	20	8595-501-360-00	7	12		17	9
	8	22	8595-505-002-00	7	28		18	6
3670-701-010-00	7	3		8	11	8654-101-233-00	15	7
3737-341-006-00	3	16	8595-505-051-20	7	22		16	7
3737-341-007-00	3	17		8	20		17	5
3746-111-011-00	3	6	8595-510-002-00	9	6		17	10
3768-185-022-10	11	14	8595-510-004-00	9	1		18	7
7955-201-026-00	1	16	8595-510-370-00	9	15	8654-101-410-00	2	1
	2	5	8595-510-391-00	9	12	8654-201-041-10	2	14
7957-405-003-00	9	5		9	14	8654-201-081-00	1	27
8593-014-200-10	3	11	8595-510-440-00	9	17	8654-201-082-10	1	30
8595-101-412-00	17	6	8595-510-441-00	9	18	8654-201-410-10	2	13
8595-101-422-00	15	1	8595-608-081-00	10	1	8654-202-016-00	3	2
	16	1	8595-608-082-00	5	2		3	5
	18	1		6	2	8654-301-004-00	4	7
8595-201-011-00	2	4		10	5		4	20
8595-201-012-00	2	6		10	9	8654-301-081-10	4	3
8595-201-013-00	2	9	8595-608-083-00	9	4	8654-501-006-10	7	9
8595-201-015-00	2	15	8595-608-820-00	10	8	8654-501-041-00	7	18
8595-201-016-00	2	17	8595-608-870-00	9	21		8	19
8595-201-017-00	2	18		10	24	8654-501-042-00	7	40
8595-201-021-00	2	19	8595-901-006-00	13	3	8654-501-043-00	7	41
8595-201-022-00	2	20		14	3	8654-501-201-00	7	2
8595-201-025-00	2	12	8595-901-007-00	13	4	8654-501-283-00	7	31
8595-211-002-10	1	11		14	4		8	14
8595-211-004-20	1	22	8597-101-500-00	1	1		10	28
8595-211-005-10	1	23	8597-101-501-00	15	3	8654-510-012-10	9	19
8595-211-010-00	1	24	8597-101-502-00	15	4	8654-510-041-00	9	3
8595-211-021-00	1	25	8597-101-510-00	1	4	8654-510-430-00	9	11
8595-211-022-00	1	26	8597-202-501-00	3	10	8654-510-440-00	9	13
8595-211-024-00	1	33	8597-301-002-00	1	41	8654-901-001-00	13	2
8595-211-200-20	1	21		2	27		14	2
8595-306-005-00	4	25	8597-608-510-00	10	43	8654-901-002-00	13	6
8595-306-006-00	4	28	8597-608-520-00	10	44		14	6

PART CODE	FIG. KEY	PART CODE	FIG. KEY	PART CODE	FIG. KEY
8657-101-501-00	15 2	8657-611-002-10	12 1		
	16 2	8657-611-003-00	12 5		
	18 2	8657-611-004-00	12 8		
8657-101-511-00	17 2	8657-611-005-00	12 13		
	18 3	8657-611-220-10	12 10		
8657-101-810-00	1 7	8657-611-230-00	12 7		
8657-101-811-00	17 7	8657-901-001-00	13 9		
	18 4	8657-901-002-00	13 10		
8657-201-081-00	1 10	8658-201-042-00	2 24		
8657-201-082-00	1 17	8658-201-043-00	2 25		
8657-201-083-00	1 18	8658-201-052-00	1 35		
8657-201-084-00	1 29	8658-201-053-00	1 36		
8657-201-085-00	1 31	8658-202-200-00	3 9		
8657-201-086-00	1 32	8658-301-001-00	4 9		
8657-202-003-00	3 1		4 22		
	3 4	8658-306-003-00	4 29		
8657-203-001-00	3 19	8658-402-410-00	5 1		
8657-301-004-00	4 1	8658-402-510-00	6 1		
8657-301-005-00	4 12	8658-407-051-00	6 5		
8657-301-008-00	4 24	8658-407-052-00	6 7		
8657-301-009-00	4 15	8658-407-410-00	5 5		
8657-501-500-00	8 4	8658-407-420-00	5 7		
8657-501-501-00	8 5	8658-501-210-00	8 1		
8657-501-520-10	8 9	8658-501-220-00	8 2		
8657-501-530-00	7 30	8658-501-410-00	7 24		
	8 13	8658-501-420-00	7 25		
8657-501-540-00	8 10	8658-501-430-00	7 35		
8657-501-540-01	7 27	8658-501-440-00	7 36		
8657-608-051-10	10 33	8658-608-510-00	10 45		
8657-608-052-00	10 19	8658-901-001-00	13 8		
	10 22		14 8		
8657-608-053-10	10 39				
8657-608-510-00	10 42				
8657-608-590-10	10 36				
8657-608-610-10	10 37				
8657-608-810-00	10 4				
8657-608-820-00	10 18				
8657-608-830-00	10 21				
8657-608-850-00	10 12				
8657-608-860-00	10 15				
8657-608-870-00	10 27				
8657-608-880-00	10 29				
8657-610-051-00	11 11				
8657-610-510-20	11 1				
8657-611-001-00	12 2				

DESCRIPTION	REF . NO	DESCRIPTION	REF . NO	DESCRIPTION	REF . NO	DESCRIPTION	REF . NO	DESCRIPTION	REF . NO
ADAPTER (90°)ORIFICE	11	BOLT/M12X30	10	COVER/UNIVERSAL	34	LABEL/GAUGE	10	LABEL/PTO	13
ADAPTER (90°/PUMP)	11	BOLT/M12X50	11	CYLINDER ASSY	2	LABEL/MAINTENANCE	4	LABEL/WARNING/BELT	14
ADAPTER/L/P11/8	11	BOLT,SEMS	9	DECK/MOWER/54/F COMP	6	DECK/MOWER/54/M COMP	13	LABEL/WARNING/HOT	14
ARM/FRONT	10	BOLT,SEMS	4	DUST/SEAL	1	DUST/SEAL	1	LABEL/WARNING/HOT	13
ARM/GAUGE/LH	7	BOLT,SEMS (S) M8X16	12	FITTING YOKE	12	FITTING YOKE	8	LINK/REAR ASSY	14
ARM/GAUGE/RH	8	BRACKET/CASE/LH	2	FORK/WHEEL/R	7	FORK/WHEEL/R	1	METAL/CENTER	10
ARM/LH	8	BRACKET/CASE/RH	2	FORK/WHEEL/R	24	FORK/WHEEL/R	4	METAL/SIDE	4
ARM/MID/LH	9	BRACKET/CYLINDE COMP	11	GEAR/BEVEL/21-2 SET	25	GEAR/BEVEL/21-2 SET	1	NIPPLE,GREASE	10
ARM/MID/RH	10	BRACKET/FRONT	10	GEAR/BEVEL/25-2 SET	1	GEAR/BEVEL/25-2 SET	36	NIPPLE,GREASE	13
ARM/MID/RH	10	BRACKET/MID/LH COMP	10	GEAR/SPUR/24	1	GEAR/SPUR/24	10	NUT/ADJUST	14
ARM/RH	10	BRACKET/MID/RH COMP	10	GEAR/SPUR/32	15	GEAR/SPUR/32	7	NUT/GAUGE	4
ARM/TENSION	9	BRACKET/REAR/LH COMP	10	GREASE/NIPPLE	29	GREASE/NIPPLE	1	NUT/M 8	10
AS YOKE	3	BRACKET/REAR/RH	10	HITCH/ARM	33	HITCH/ARM	8	NUT/M12	4
AS YOKE	15	BUSH/14X16X10	12	HOLDER/MOWER	11	HOLDER/MOWER	4	NUT/M16	14
AS YOKE	16	BUSH/16X18X15	3	HOSE/DERIVERY	8	HOSE/DERIVERY	6	NUT/M16	17
AS YOKE	16	BUSH/20X23X15	9	HUB/REAR/LH	6	HUB/REAR/LH	7	NUT/M16	17
AS YOKE	18	BUSH/20X23X15	9	HUB/REAR/RH	8	HUB/REAR/RH	8	NUT/M16	17
AS YOKE	17	BUSH/20X23X30	9	JOINT/UNIVERSAL	4	JOINT/UNIVERSAL	1	NUT/M16	17
BAND, WIRE/250	11	BUSH/22X25X25	7	JOINT/UNIVERSAL	11	JOINT/UNIVERSAL	1	NUT/M16	17
BEARING	4	BUSH/22X25X25	8	KEY/UNIVERSAL SET	29	KEY/UNIVERSAL SET	1	NUT/M16	17
BEARING/BALL	4	BUSH/26X30X20	10	JOURNALCROSSE	28	JOURNALCROSSE	16	NUT/M16	17
BEARING/BALL	1	BUSH/30X34X20	8	JOURNALCROSSE	5	JOURNALCROSSE	17	NUT/M16	17
BEARING/BALL 6205SH2	1	CAP/32	7	LABEL/CE	4	LABEL/CE	3	NUT/M16	17
BEARING/BALL 6305SH2	1	CASE/BEVEL	2	LABEL/CUTTING	11	LABEL/CUTTING	1	NUT/M16	17
BEARING, RB 6006	2	CASE/LOWER	1	LABEL/DANGER	10	LABEL/DANGER	17	NUT/M16	17
BEARING, RB/6005	1	CASE/UPPER	1	NUT, LOCK/M8	10	NUT, LOCK/M8	18	NUT/M16	17
BEARING, RB/6304	2	CLIP,PIN	7	NUT, LOCK/M8	29	NUT, LOCK/M8	1	NUT/M16	17
BELT/VB101	3	CLIP,PIN	8	NUT, LOCK/M8	12	NUT, LOCK/M8	2	NUT/M16	17
BLOT/M10X25	1	CASE/BEVEL	10	NUT, LOCK/M8	20	NUT, LOCK/M8	5	NUT/M16	17
BOLT	2	CASE/LOWER	10	NUT, LOCK/M8	23	NUT, LOCK/M8	3	NUT/M16	17
BOLT	10	COLLAR/BRADE	10	NUT, LOCK/M8	40	NUT, LOCK/M8	8	NUT/M16	17
BOLT(S) M10X25	10	COLLAR/BRADE	11	NUT, LOCK/M8	12	NUT, LOCK/M8	5	NUT/M16	17
BOLT(S) M10X25	11	COLLAR/26X36X3	4	NUT, LOCK/M8	9	NUT, LOCK/M8	2	NUT/M16	17
BOLT(S) M10X25	4	COLLAR,THRUST	4	NUT, LOCK/M8	22	NUT, LOCK/M8	3	NUT/M16	17
BOLT(S) M10X25	4	COLLAR,THRUST	3	NUT, LOCK/M8	3	NUT, LOCK/M8	8	NUT/M16	17
BOLT(S) M10X25	7	COLLER/26X34X15	7	NUT, LOCK/M8	5	NUT, LOCK/M8	9	NUT/M16	17
BOLT(S) M10X25	8	COVER/BELT/LH	4	NUT, LOCK/M8	24	NUT, LOCK/M8	1	NUT/M16	17
BOLT/M 8X80	1	COVER/BELT/LH	6	NUT, LOCK/M8	5	NUT, LOCK/M8	14	NUT/M16	17
BOLT/M10X20	2	COVER/BELT/LH/F COMP	5	NUT, LOCK/M8	5	NUT, LOCK/M8	1	NUT/M16	17
BOLT/M10X20	9	COVER/BELT/RH	6	NUT, LOCK/M8	7	NUT, LOCK/M8	13	NUT/M16	17
BOLT/M10X20	10	COVER/BELT/RH/F COMP	5	NUT, LOCK/M8	7	NUT, LOCK/M8	14	NUT/M16	17
BOLT/M12X30	10	COVER/CASE	2	NUT, LOCK/M8	6	NUT, LOCK/M8	14	NUT/M16	17

DESCRIPTION	REF . NO	DESCRIPTION	REF . NO	DESCRIPTION	REF . NO	DESCRIPTION	REF . NO	DESCRIPTION	REF . NO
PIN/GAUGE COMP	7	PULLEY/VB137	3	SPRING/CLIP	7	WASHER,SP/M16	3		7
PIN/PARALLEL	8	RING/SNAP	3	SPRING/HC042	5	WASHER,SP/M20	7		16
PIN/08X44	4		1		6	WHEEL/GAUGE ASSY	4		27
	7		34		10		7		10
	8		11		10		7		30
PIN/10X53	7		2	SPRING/HC058	7		8		13
PIN/12X108	7		2	SPRING,CHAIN TENSION	3	WHEEL/GAUGE/FRONT	7		17
	8		4	STOPPER	9		7		21
PIN/12X133	7	RING,SNAP/16 C	4		22		7		18
	8	RING,SNAP/17 C	3	STOPPER COMP	10		8		18
PIN/12X42	8	RING,SNAP/17 C	3	STOPPER	9	WHELL ASSY	7		11
PIN/12X42	10	RING,SNAP/30 C	7		10		1		3
PIN/15X88	11	RING,SNAP/52 C	4	STOPPER/MOWER	7		1		6
PIN/16X33	7		4	STOPPER,PISTON	11		1		9
PIN/16X43	10	ROD PACKING	11	SURCLIP/HOLE	15		2		3
	10	ROD/LIFT ASSY	9		16				
PIN/16X65	9	ROD,CHAIN TENSION	3		17				
PIN/16X96	5	SCREW,PLUS/M4X8	12		17				
	6	SEAL/OIL	1		17				
	10		1		18				
	10		1	TIRE/8X3.00-4 ASSY	7				
PIN/19X135	9		2	WASHER	3				
PIN/20X112	7		4	WASHER / M16	7				
PIN,HAIR	9		4		9				
PIN,LINK	9	SEAL,OIL/TC305512	2	WASHER /M12	9				
	9	SEAL,OIL/TC35528	2		7				
PIN,SPLIT/3 X25	7		4		10				
PIN,SPLIT/3 X35	12	SHAFT YOKE ASSY	17	WASHER/13X17X10	12				
PIN,SPRING/4 X25	12		18		7				
PIN,SPRING/4X40	7	SHAFT/ADJUST	12	WASHER/13X26X06	8				
PIN,SPRING/5 X40 W	5	SHAFT/COUNTER	1	WASHER/16X40X05	12				
	6	SHAFT/INPUT	1	WASHER/20X60X06	9				
	7		1	WASHER/27X40X2	4				
	8	SHAFT/OUTPUT	2	WASHER/30X50X05	8				
	8	SHAFT/SIDE	2	WASHER/45X55X01	7				
	10	SHAFTYOKE ASSY	4	WASHER,BRAKE DRUM	2				
	10		15	WASHER,PL/M14	3				
PIN,SPRING/6 X40 W	1	SHIM/0.1	1		1				
	1		25	WASHER,PL/M22	2				
	1		1		7				
	1		26		33				
	2		17	WASHER,SP/M 8	8				
PIPE/GREASE	2		2	WASHER,SP/M10	1				
PISTON	4	SHIM/0.2	1		1				
PLATE/GUIDE COMP	11		1		1				
PLATE/L/25X80	12		2	WASHER,SP/M12	2				
PLATE/L/80X59	1	SHIM/1.2	2		10				
PLATE/L/80X75	1	SLEEVEYOKE	4		17				
PLUG,DRAIN (1/4)	1	SLEEVEYOKE ASSY	15		10				
	2		16		10				
	2		17		10				
PULLEY COMP	3		18		11				

