

Directions for use of Parts Catalogue

1. Applicable model of machines

All component and option parts used for SMM54-TM3240 Mower are listed in this parts catalogue.

NOTES: SMM54-TM3240E4..... FOR TM3200,3240 (STD)

SMM54-TM3240HE4.. FOR TM3200,3240 (HST)

2. Explanation for head paragraph

KEY	PART CODE	DESCRIPTION	SPC	TYPE OF MODEL						I T C	C O L	G R P	REMARKS
				SSM48M	SSM48F	SSM48G	SRM48M	SRM48F	SRM48G				
1	8595-211-001-20	CASE/UPPER	*	1 -229									
1A	8657-201-081-00	CASE/UPPER	*	1 -230			1						
2	8595-211-002-10	CASE/LOWER	*	1			1						
3	V523-100-801-80	PIN	*	2			2						
4	V211-260-803-00	BOLT, SENS	*	6			6						
			*	2 -229									
			*	2 -230			2						
			*	1			1						

- ① KEY shows the location of parts diagramed in the illustration.
- ② Parts numbers begin with `V` and `W` are standard parts of the market.
- ③ `LH` and `RH` on the parts name are described against the moving direction of the machine or are described on the condition how to install parts on the machines.
- ④ SPC : The following symbol classifies parts to be used for machines.
 - `*` means standard parts.
 - `T` shows that the parts can be installed as optional parts.
 - `R` shows that the parts can be used as applicable parts to replace originally equipped parts.

- ⑤ Upper column : QTY shows the number of parts to be used for one unit of machine.

`M` is indicated for parts supplied by a meter long.

`l` is indicated for parts supplied by liter.

`AR` is indicated for parts need to be adjusted or regulated.

Lower column : serial number

—229 means serial number up to 229.

230— means serial number 230 and after.

- ⑥ ITC : Interchangeability

`1`...OLD ← NEW

New parts can be used in place of the old parts.

`2`...OLD → NEW

Old parts can be used in place of the new parts.

`3`...OLD →← NEW

Old parts and new parts can not be replaced each other.

- ⑦ COL : Color code

Color is signified with color code number for colored parts.

Please see the color list shown in the next page.

- ⑧ GRP : Parts shown in this column can be replaced by SET parts.

Example : Parts marked Ⓐ can be replaced by parts marked Ⓑ, and Ⓓ for Ⓒ, so the rest follow in the same alphabetical order.

- ⑨ Remarks

* Other maker's part code number is shown in this column.

* When Fig. No. is shown in the Remark column of SET parts or ASSY parts, each of their component parts are listed in said Fig. No.

3. Color :

The following colors are used color parts.

COLOR CODE	COLOR	SPRAY TYPE CODE NUMBER	PAINTS 4K DRUM	PAINTS 16K DRUM
7 F	MIRROR BLACK	1300-954-001-10	1300-954-003-00	1300-954-004-00

NOTE : Color code is signified only for the parts assigned by the maker as color parts.

4. Serial Numbers :

For chassies serial number is shown on the LABEL.

Please see



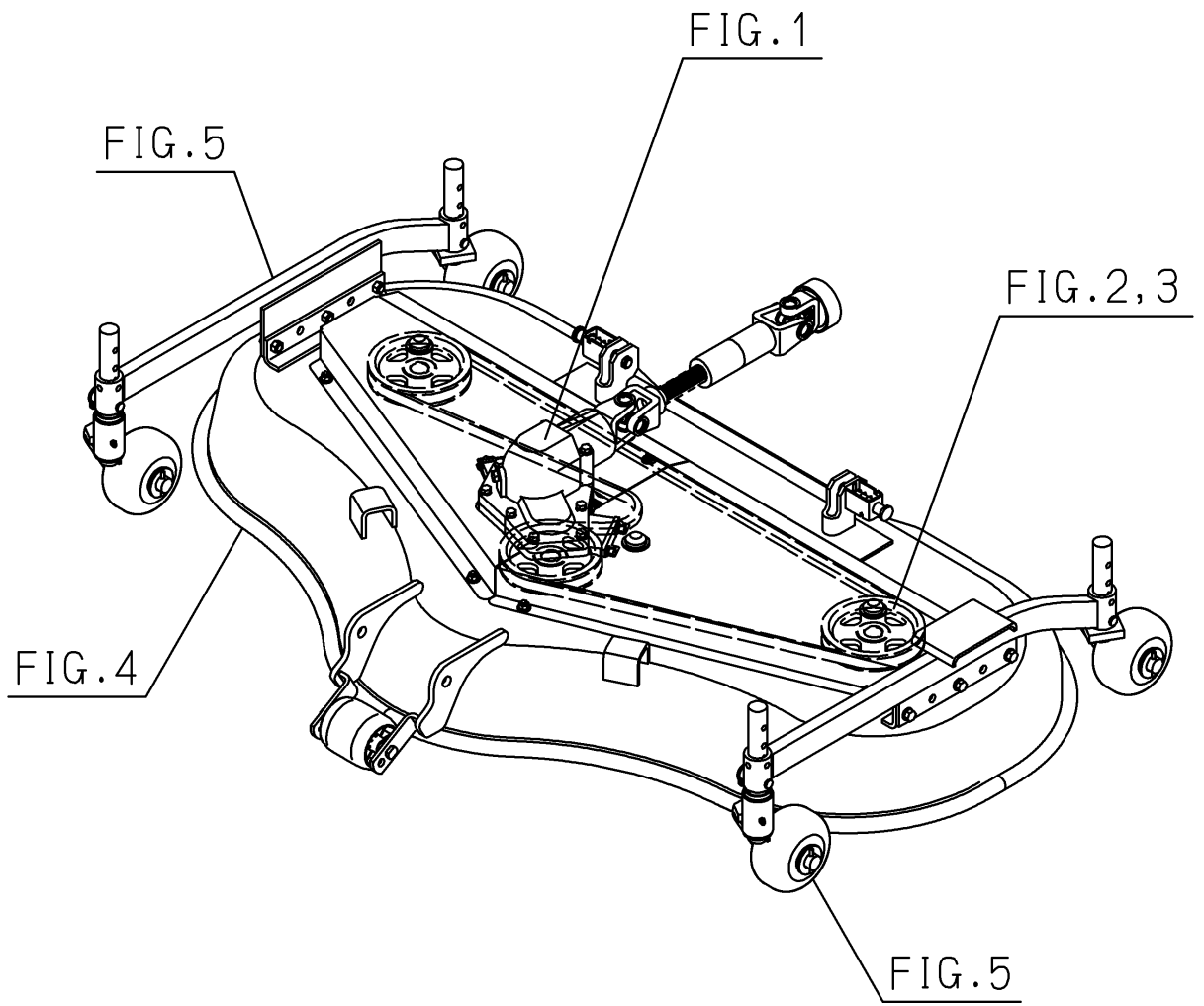
5. Parts Order

- 1) Parts numbers listed in the parts catalogue are all registered in “ISEKI on-line computer”.
- 2) When you order parts, please make sure of correct numbers.
- 3) When substitute parts is available, the part number ordered will be automatically turned to a new part number.
- 4) Please be sure to use “ISEKI GENUINE PARTS”.

Any other similar parts other than ISEKI parts when used may cause a trouble that makes us unable to repair or guarantee the warrant.

*** Structure Table of Model ***

<p style="text-align: center;">M O D E L</p>	<p style="text-align: center;">S M M E H 5 4 E 4 T M 3 2 4 0</p>										
<p>FIG.</p>	<p>1 ** 2 ** 3 ** 4 ** 5 ** 6 ** 7 ** 8 ** 9 ** 10 * 11 *</p>										



Contents

SMM54

UNIVERSAL JOINT,CASE (BEVEL) SYSTEM.....	Fig. 1
PULLEY,V BELT SYSTEM.....	Fig. 2
METAL,BLADE (DUMMY) SYSTEM.....	Fig. 3
MOWER DECK,BELT COVER SYSTEM.....	Fig. 4
GAUGE WHEEL SYSTEM.....	Fig. 5
LINK SYSTEM(1/2)(2/2).....	Fig. 6
CYLINDER SYSTEM.....	Fig. 7
HEIGHT ADJUST SYSTEM.....	Fig. 8
LABEL.....	Fig. 9

COMPONENT PARTS

COMPONENT PARTS

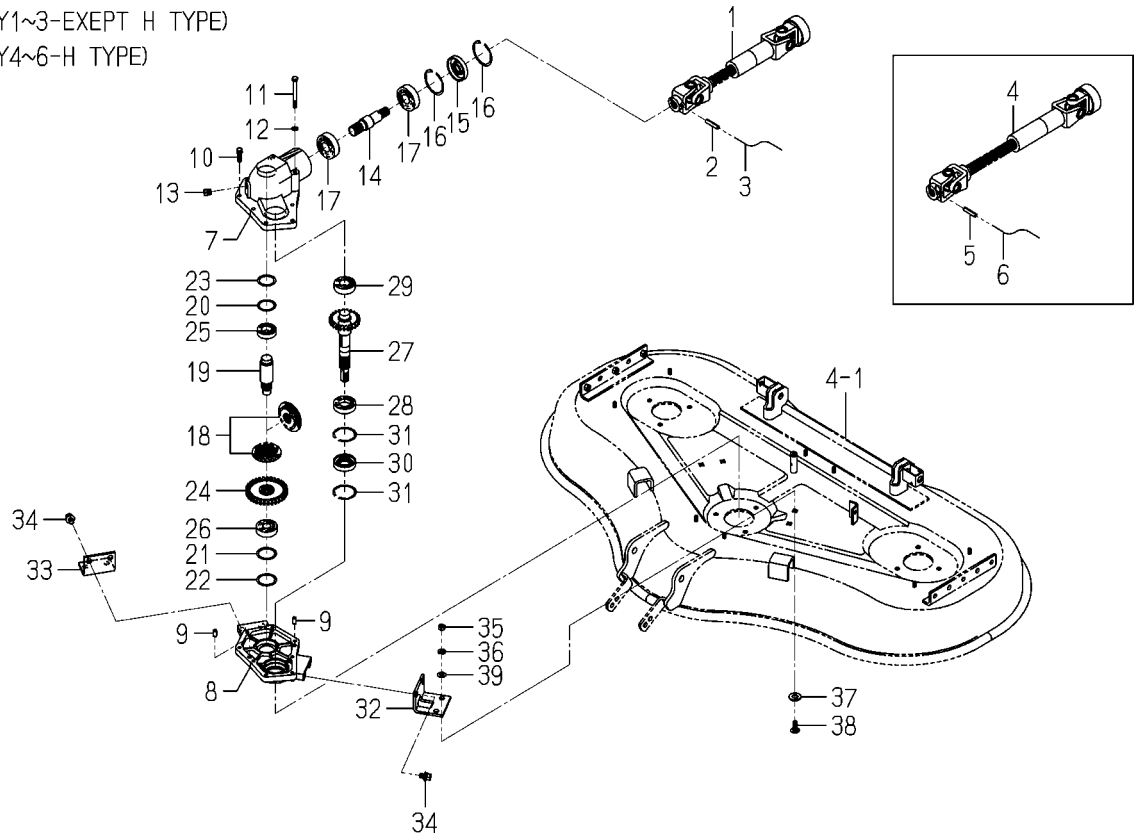
FOR 8597-101-510-00 ON Fig.1.....	Fig. 10
-----------------------------------	---------

COMPONENT PARTS

FOR 8657-101-810-00 ON Fig.1.....	Fig. 11
-----------------------------------	---------

FIG. 1 UNIVERSAL JOINT,CASE (BEVEL) SYSTEM

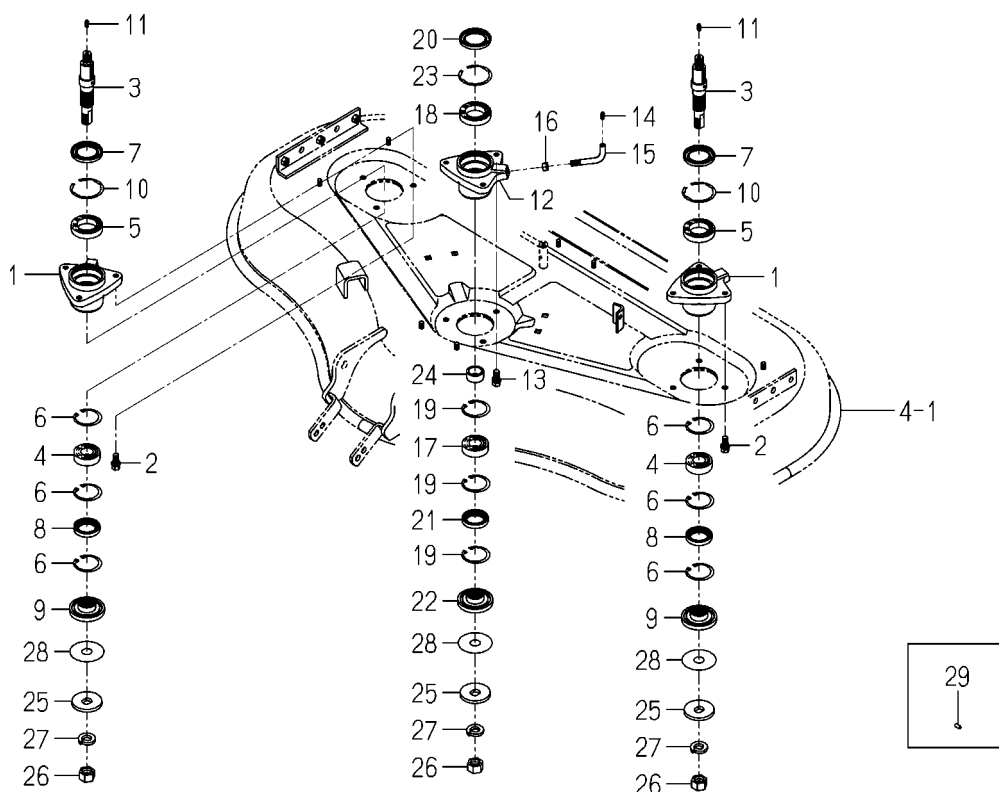
(KEY1~3-EXEPT H TYPE)
 (KEY4~6-H TYPE)



8597-101A-0100,8657-101C-0100,8658-201G-0100

KEY	PART CODE	DESCRIPTION	S P C	TYPE OF MODEL		I T C	C O L	G R P	REMARKS
				SMM54	TM3240				
1	8597-101-510-00	JOINT/UNIVERSAL ASSY	*	1					FIG 010
2	V580-140-604-00	PIN,SPRING/6 X40 W	*	1					
3		WIRE	*	1					
4	8657-101-810-00	JOINT/UNIVERSAL ASSY	*	1					FIG 011
5	V580-140-604-00	PIN,SPRING/6 X40 W	*	1					
6		WIRE	*	1					
7	8657-201-081-00	CASE/UPPER	*	1					
8	8595-211-002-10	CASE/LOWER	*	1					
9	V523-100-801-80	PIN	*	2					
10	V211-260-803-00	BOLT,SEMS	*	6					
11	V201-260-808-00	BOLT/M 8X80	*	2					
12	V401-160-008-00	WASHER,SP/M 8	*	2					
13	7955-201-026-00	PLUG,DRAIN (1/4)	*	1					
14	8657-201-082-00	SHAFT/INPUT	*	1					
15	8657-201-083-00	SEAL/OIL	*	1					
16	V707-140-062-00	RING/SNAP	*	2					
17	1650-219-009-00	BEARING/BALL	*	2					
18	8595-211-200-20	GEAR/BEVEL/21-2 SET	*	1					
19	8595-211-004-20	SHAFT/COUNTER	*	1					
20	8595-211-005-10	SHIM/0.2	*	1					
21	8595-211-010-00	SHIM/0.2	*	1					
22	8595-211-021-00	SHIM/0.1	*	1					
23	7970-201-004-00	SHIM,A	*	1					
24	8657-201-051-10	GEAR/SPUR/33	*	1					
25	V600-110-600-50	BEARING,RB/6005	*	1					
26	8657-201-084-00	BEARING/BALL	*	1					
27	8654-201-091-00	GEAR/SPUR/23	*	1					
28	8657-201-085-00	BEARING/BALL	*	1					
29	8657-201-086-00	BEARING/BALL	*	1					
30	8595-211-024-00	SEAL/OIL	*	1					

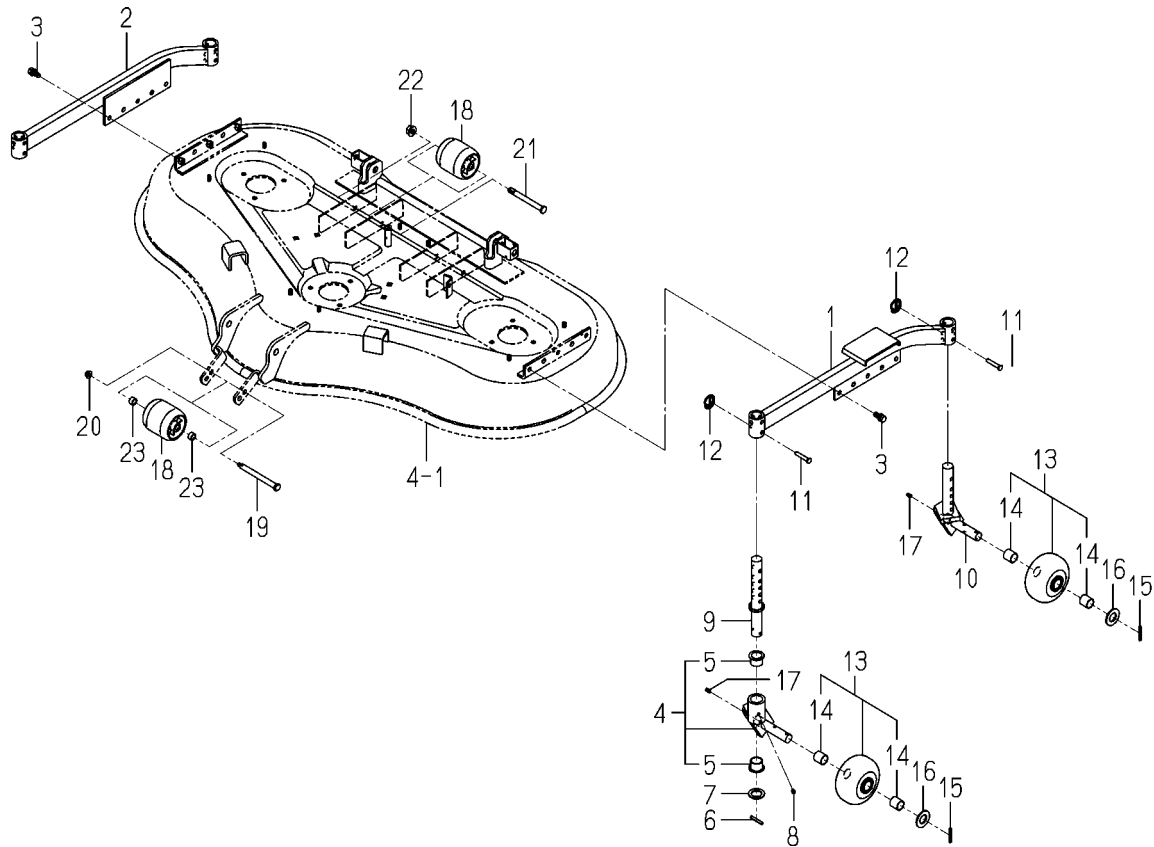
FIG. 3 METAL, BLADE (DUMMY) SYSTEM



8658-301 -0100,8658-306 -0100

KEY	PART CODE	DESCRIPTION	S P C	TYPE OF MODEL		I T C	C O L	G R P	REMARKS
				SMM54	TM3240				
1	8657-301-004-00	METAL/SIDE	*	2					
2	V211-261-002-50	BOLT(S) M10X25	*	6					
3	8654-301-081-10	SHAFT/SIDE	*	2					
4	1594-221-001-00	BEARING/BALL 6205SH2	*	2					
5	V600-110-690-80	BEARING	*	2					
6	V705-140-052-00	RING,SNAP/52 C	*	6					
7	8654-301-004-00	SEAL/OIL	*	2					
8	V744-135-520-80	SEAL,OIL/TC35528	*	2					
9	8658-301-001-00	COLLAR/BRADE	*	2					
10	V707-140-062-00	RING/SNAP	*	2					
11	V760-150-000-00	NIPPLE,GREASE	*	2					
12	8657-301-005-00	METAL/CENTER	*	1					
13	V211-261-002-50	BOLT(S) M10X25	*	3					
14	V760-150-000-00	NIPPLE,GREASE	*	1					
15	8657-301-009-00	PIPE/GREASE	*	1					
16	V304-260-010-00	NUT	*	1					
17	1594-221-001-00	BEARING/BALL 6205SH2	*	1					
18	V600-110-690-80	BEARING	*	1					
19	V705-140-052-00	RING,SNAP/52 C	*	3					
20	8654-301-004-00	SEAL/OIL	*	1					
21	V744-135-520-80	SEAL,OIL/TC35528	*	1					
22	8658-301-001-00	COLLAR/BRADE	*	1					
23	V707-140-062-00	RING/SNAP	*	1					
24	8657-301-008-00	COLLER/26X34X15	*	1					
25	8595-306-005-00	WASHER/20X60X06	*	3					
26	8595-306-007-00	NUT/M20X1.5	*	3					
27	V401-160-020-00	WASHER,SP/M20	*	3					
28	8595-306-006-00	SHIM/1.2	*	3					
29	8658-306-003-00	PIN/PARALLEL	*	6					

FIG. 5 GAUGE WHEEL SYSTEM

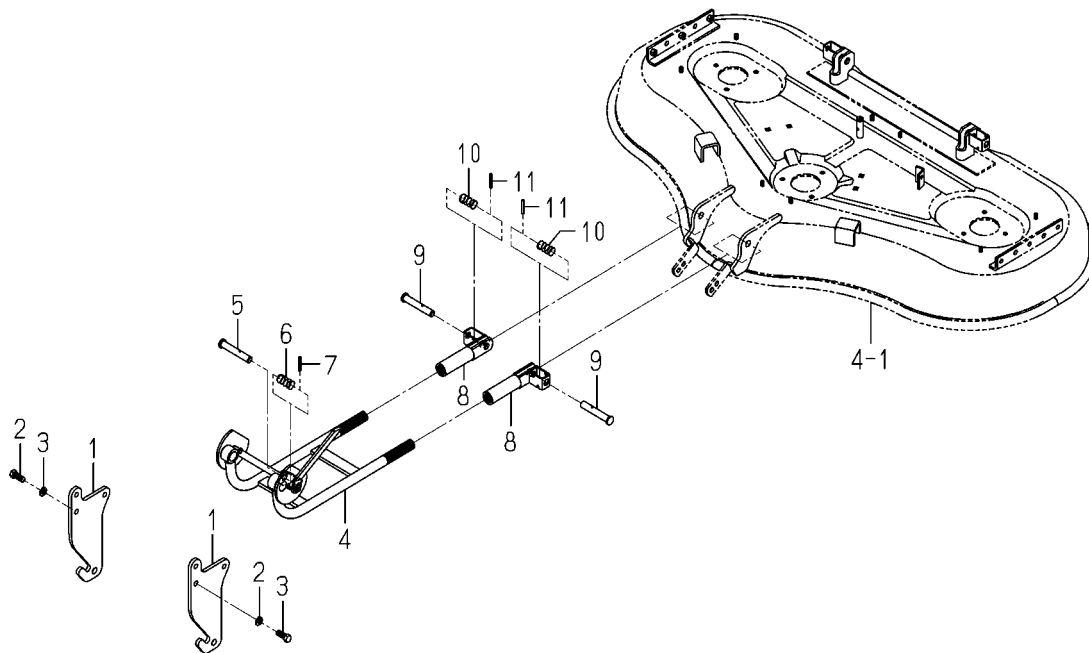


8658-501C-0100

KEY	PART CODE	DESCRIPTION	S P C	TYPE OF MODEL		I T C	C O L	G R P	REMARKS
				SMM54	TM3240				
1	8658-501-210-00	ARM/GAUGE/LH COMP	*	1			7F		
2	8658-501-220-00	ARM/GAUGE/RH COMP	*	1			7F		
3	V211-261-002-50	BOLT(S) M10X25	*	6					
4	8657-501-500-10	FORK/WHEEL ASSY	*	2			7F		
5	8657-501-501-00	BUSH/26X30X20	*	4					
6	V580-140-504-00	PIN,SPRING/5 X40 W	*	2					
7	1564-275-007-00	WASHER/27X40X2	*	2					
8	V760-150-000-00	NIPPLE,GREASE	*	2					
9	8657-501-520-10	PIN/GAUGE COMP	*	2			7F		
10	8657-501-540-10	FORK/WHEEL/R COMP	*	2			7F		
11	8595-505-002-00	PIN/08X44	*	4					
12	1427-317-003-00	CLIP,PIN	*	4					
13	8657-501-530-00	WHEEL/GAUGE ASSY	*	4					
14	8654-501-283-00	BUSH/22X25X25	*	8					
15	V580-140-504-00	PIN,SPRING/5 X40 W	*	4					
16	V411-260-022-00	WASHER,PL/M22	*	4					
17	V760-150-000-00	NIPPLE,GREASE	*	4					
18	8595-501-001-10	WHEEL/GAUGE/FRONT	*	3					
19	8654-501-041-00	PIN/12X133	*	1					
20	V362-260-008-00	NUT/WASHER	*	1					
21	8595-505-051-30	PIN/12X117	*	2					
22	V360-260-012-00	NUT/WASHER	*	2					
23	3664-416-072-00	WASHER/13X17X10	*	2					

FIG. 6 LINK SYSTEM(1/2)

KEY12~30-PLEASE SEE NEXT PAGE



8657-608D-0100

KEY	PART CODE	DESCRIPTION	S P C	TYPE OF MODEL		I T C	C O L	G R P	REMARKS
				SMM54	TM3240				
1	8595-608-081-00	BRACKET/FRONT	*	2					
2	V201-361-203-00	BOLT/M12X30	*	6					
3	V401-160-012-00	WASHER,SP/M12	*	6					
4	8657-608-810-10	ARM/FRONT COMP	*	1			7F		
5	8595-608-082-00	PIN/16X96	*	1					
6	1560-601-028-00	SPRING/HC042	*	1					
7	V580-140-504-00	PIN,SPRING/5 X40 W	*	1					
8	8595-608-820-00	HITCH/ARM COMP	*	2			7F		
9	8595-608-082-00	PIN/16X96	*	2					
10	1560-601-028-00	SPRING/HC042	*	2					
11	V580-140-504-00	PIN,SPRING/5 X40 W	*	2					
12	8657-608-850-00	BRACKET/MID/LH COMP	*	1					
13	V203-361-003-50	BOLT	*	3					
14	V401-160-010-00	WASHER,SP/M10	*	3					
15	8657-608-860-00	BRACKET/MID/RH COMP	*	1					
16	V203-361-003-50	BOLT	*	3					
17	V401-160-010-00	WASHER,SP/M10	*	3					
18	8657-608-820-00	ARM/MID/LH COMP	*	1					
19	8657-608-052-00	PIN/16X43	*	1					
20	1427-317-003-00	CLIP,PIN	*	1					
21	8657-608-830-00	ARM/MID/RH COMP	*	1					
22	8657-608-052-00	PIN/16X43	*	1					
23	1427-317-003-00	CLIP,PIN	*	1					
24	8595-608-870-00	STOPPER COMP	*	2					
25	1593-101-012-00	STOPPER	*	2					
26	V304-260-012-00	NUT/M12	*	2					
27	8657-608-870-00	LINK/REAR ASSY	*	1					
28	8654-501-283-00	BUSH/22X25X25	*	2					
29	8657-608-880-10	BRACKET/REAR/LH COMP	*	1					
30	V762-150-000-00	NIPPLE,GREASE/B-M6F	*	2					

Numerical Index

8658-097-130-00

Part Code	Fig.Key	Part Code	Fig.Key	Part Code	Fig.Key
1342-402-006-00	7 15	8595-505-002-00	5 11	8657-203-001-00	2 19
1427-317-003-00	5 12	8595-505-051-30	5 21	8657-301-004-00	3 1
	6 20	8595-608-081-00	6 1	8657-301-005-00	3 12
	6 23	8595-608-082-00	4 2	8657-301-008-00	3 24
	6 42		6 5	8657-301-009-00	3 15
	7 12		6 9	8657-501-500-10	5 4
1434-211-004-00	2 3	8595-608-820-00	6 8	8657-501-501-00	5 5
1560-601-028-00	4 3	8595-608-870-00	6 24	8657-501-520-10	5 9
	6 6	8595-901-006-00	9 2	8657-501-530-00	5 13
	6 10	8595-901-007-00	9 3	8657-501-540-10	5 10
1564-275-007-00	5 7	8597-101-510-00	1 1	8657-608-051-20	6 34
1593-101-012-00	6 25	8597-202-501-00	2 10	8657-608-052-00	6 19
1593-901-015-00	9 6	8597-301-002-00	1 38		6 22
1594-221-001-00	3 4	8654-101-212-00	10 4	8657-608-053-10	6 41
	3 17	8654-101-222-00	10 3	8657-608-590-10	6 38
1608-206-240-00	7 9	8654-101-230-00	10 5	8657-608-610-10	6 39
1608-206-241-00	7 10		11 5	8657-608-810-10	6 4
1650-219-009-00	1 17	8654-101-232-00	10 6	8657-608-820-00	6 18
1675-506-002-00	7 14		11 6	8657-608-830-00	6 21
2149-602-012-00	4 6	8654-101-233-00	10 7	8657-608-850-00	6 12
	4 8		11 7	8657-608-860-00	6 15
2500-901-014-30	9 4	8654-201-091-00	1 27	8657-608-870-00	6 27
2500-901-027-00	9 1	8654-202-016-00	2 2	8657-608-880-10	6 29
3621-211-003-00	2 14		2 5	8657-610-051-00	7 11
3650-380-220-10	7 13	8654-301-004-00	3 7	8657-610-510-20	7 1
3664-416-072-00	5 23		3 20	8657-611-001-00	8 2
3737-341-006-00	2 16	8654-301-081-10	3 3	8657-611-002-10	8 1
3737-341-007-00	2 17	8654-501-041-00	5 19	8657-611-003-00	8 5
3746-111-011-00	2 6	8654-501-283-00	5 14	8657-611-004-00	8 8
7955-201-026-00	1 13		6 28	8657-611-005-00	8 16
7970-201-004-00	1 23	8654-901-002-00	9 5	8657-611-230-00	8 7
8593-014-200-10	2 11	8657-101-501-00	10 2	8657-611-240-00	8 10
8595-101-422-00	10 1		11 2	8657-611-250-00	8 12
	11 1	8657-101-511-00	11 3	8657-901-001-00	9 8
8595-211-002-10	1 8	8657-101-810-00	1 4	8657-901-002-00	9 9
8595-211-004-20	1 19	8657-101-811-00	11 4	8658-201-052-00	1 32
8595-211-005-10	1 20	8657-201-051-10	1 24	8658-201-053-00	1 33
8595-211-010-00	1 21	8657-201-081-00	1 7	8658-202-200-00	2 9
8595-211-021-00	1 22	8657-201-082-00	1 14	8658-301-001-00	3 9
8595-211-024-00	1 30	8657-201-083-00	1 15		3 22
8595-211-200-20	1 18	8657-201-084-00	1 26	8658-306-003-00	3 29
8595-306-005-00	3 25	8657-201-085-00	1 28	8658-402-510-00	4 1
8595-306-006-00	3 28	8657-201-086-00	1 29	8658-407-051-00	4 5
8595-306-007-00	3 26	8657-202-003-10	2 1	8658-407-052-00	4 7
8595-501-001-10	5 18		2 4	8658-501-210-00	5 1

Numerical Index

8658-097-130-00

Part Code	Fig.Key	Part Code	Fig.Key	Part Code	Fig.Key
8658-501-220-00	5 2	V401-160-020-00	3 27		
8658-901-001-00	9 7	V411-260-010-00	1 39		
A101-212-003-00	8 13	V411-260-012-00	6 43		
K182-002-002-00	7 6		8 3		
K182-032-000-00	7 4	V411-260-014-00	1 37		
K182-032-001-00	7 5	V411-260-022-00	5 16		
K182-032-002-00	7 7	V500-163-003-50	8 4		
K182-032-003-00	7 8	V523-100-801-80	1 9		
V120-264-000-80	8 17	V580-140-402-50	8 9		
V120-266-001-60	8 14	V580-140-504-00	4 4		
V201-260-808-00	1 11		5 6		
V201-361-203-00	6 2		5 15		
	7 2		6 7		
V201-361-204-00	6 31		6 11		
	6 35	V580-140-604-00	1 2		
V203-361-003-50	6 13		1 5		
	6 16	V600-110-600-50	1 25		
V211-260-803-00	1 10	V600-110-690-80	3 5		
V211-261-002-50	3 2		3 18		
	3 13	V704-140-016-00	2 13		
	5 3	V704-140-017-00	2 12		
V211-360-802-50	8 11	V705-140-052-00	3 6		
V211-661-002-00	1 34		3 19		
V304-260-008-00	2 18	V707-140-055-00	1 31		
V304-260-010-00	1 35	V707-140-062-00	1 16		
V304-260-012-00	3 16		3 10		
	6 26		3 23		
	8 6	V744-135-520-80	3 8		
V304-260-016-00	6 40		3 21		
V304-460-012-00	6 33	V760-150-000-00	2 15		
	6 37		3 11		
V304-460-016-00	2 8		3 14		
V360-260-006-00	8 15		5 8		
V360-260-012-00	5 22		5 17		
V362-260-008-00	4 9	V762-150-000-00	6 30		
V401-160-008-00	5 20				
V401-160-010-00	1 12				
	1 36				
	6 14				
	6 17				
V401-160-012-00	6 3				
	6 32				
	6 36				
	7 3				
V401-160-016-00	2 7				

Alphabetical Index

8658-097-130-00

Description	Fig.Key	Description	Fig.Key	Description	Fig.Key
ADAPTER (90°) ORIFICE	7 9	BUSH/22X25X25	6 28	LABEL/MAINTENANCE	9 6
ADAPTER/L/PT1/8	7 14	BUSH/26X30X20	5 5	LABEL/PTO	9 5
ARM/FRONT COMP	6 4	CAP/32	4 6	LABEL/WARNING/BELT	9 2
ARM/GAUGE/LH COMP	5 1	CAP/32	4 8	LABEL/WARNING/HOT	9 3
ARM/GAUGE/RH COMP	5 2	CASE/LOWER	1 8	LINK/REAR ASSY	6 27
ARM/MID/LH COMP	6 18	CASE/UPPER	1 7	METAL/CENTER	3 12
ARM/MID/RH COMP	6 21	CLIP, PIN	5 12	METAL/SIDE	3 1
ARM/TENSION ASSY	2 9	CLIP, PIN	6 20	NIPPLE, GREASE	2 15
AS YOKE ASSY	10 2	CLIP, PIN	6 23	NIPPLE, GREASE	3 11
AS YOKE ASSY	11 2	CLIP, PIN	6 42	NIPPLE, GREASE	3 14
BAND, WIRE/250	7 15	CLIP, PIN	7 12	NIPPLE, GREASE	5 8
BEARING	3 5	COLLAR/26X36X3	2 3	NIPPLE, GREASE	5 17
BEARING	3 18	COLLAR/BRADE	3 9	NIPPLE, GREASE/B-M6F	6 30
BEARING, RB/6005	1 25	COLLAR/BRADE	3 22	NUT	1 35
BEARING/BALL	1 17	COLLER/26X34X15	3 24	NUT	2 18
BEARING/BALL	1 26	COVER/BELT/LH	4 5	NUT	3 16
BEARING/BALL	1 28	COVER/BELT/RH	4 7	NUT/ADJUST	8 2
BEARING/BALL	1 29	CYLINDER ASSY	7 4	NUT/GAUGE COMP	8 7
BEARING/BALL 6205SH2	3 4	DECK/MOWER/54/M COMP	4 1	NUT/M12	6 26
BEARING/BALL 6205SH2	3 17	DUST/SEAL	7 8	NUT/M12	6 33
BELT/VB101	2 19	FITTING YOKE	10 1	NUT/M12	6 37
BLOT/M10X25	1 38	FITTING YOKE	11 1	NUT/M12	8 6
BOLT	6 13	FORK/A COMP	6 38	NUT/M16	2 8
BOLT	6 16	FORK/B COMP	6 39	NUT/M16	6 40
BOLT(S) M10X25	3 2	FORK/WHEEL ASSY	5 4	NUT/M20X1.5	3 26
BOLT(S) M10X25	3 13	FORK/WHEEL/R COMP	5 10	NUT/M6	8 15
BOLT(S) M10X25	5 3	GEAR/BEVEL/21-2 SET	1 18	NUT/WASHER	4 9
BOLT, SEMS	1 10	GEAR/SPUR/23	1 27	NUT/WASHER	5 20
BOLT/M 8X80	1 11	GEAR/SPUR/33	1 24	NUT/WASHER	5 22
BOLT/M10X20	1 34	GREASENIPPLE	10 6	ORIFICEBOLT/2.2	7 10
BOLT/M12X30	6 2	GREASENIPPLE	11 6	PIN	1 9
BOLT/M12X30	7 2	HITCH/ARM COMP	6 8	PIN, SPLIT/3 X35	8 4
BOLT/M12X40	6 31	HOSE/HYDRO/900 ASSY	7 13	PIN, SPRING/4 X25	8 9
BOLT/M12X40	6 35	JOINT/UNIVERSAL ASSY	1 1	PIN, SPRING/5 X40 W	4 4
BOLT/SP	8 11	JOINT/UNIVERSAL ASSY	1 4	PIN, SPRING/5 X40 W	5 6
BRACKET/CYLINDE COMP	7 1	JOURNALCROSSE ASSY	10 5	PIN, SPRING/5 X40 W	5 15
BRACKET/FRONT	6 1	JOURNALCROSSE ASSY	11 5	PIN, SPRING/5 X40 W	6 7
BRACKET/GUIDE COMP	8 10	KEY/06X06X28	2 2	PIN, SPRING/5 X40 W	6 11
BRACKET/MID/LH COMP	6 12	KEY/06X06X28	2 5	PIN, SPRING/6 X40 W	1 2
BRACKET/MID/RH COMP	6 15	KNOB/10X33	8 8	PIN, SPRING/6 X40 W	1 5
BRACKET/REAR/LH COMP	6 29	LABEL/ADJUST	9 8	PIN/08X44	5 11
BRACKET/REAR/RH	6 34	LABEL/CE	9 1	PIN/12X117	5 21
BUSH/14X16X10	8 13	LABEL/CUTTING	9 7	PIN/12X133	5 19
BUSH/16X18X15	2 10	LABEL/DANGER	9 4	PIN/12X42	6 41
BUSH/22X25X25	5 14	LABEL/GAUGE	9 9	PIN/15X88	7 11

Alphabetical Index

8658-097-130-00

Description	Fig.Key	Description	Fig.Key	Description	Fig.Key
PIN/16X43	6 19	SHIM/1. 2	3 28		
PIN/16X43	6 22	SLEEVEYOKE ASSY	10 4		
PIN/16X96	4 2	SLEEVEYORK	11 4		
PIN/16X96	6 5	SPRING, CHAIN TENSION	2 16		
PIN/16X96	6 9	SPRING/HCO42	4 3		
PIN/GAUGE COMP	5 9	SPRING/HCO42	6 6		
PIN/PARALLEL	3 29	SPRING/HCO42	6 10		
PIPE/GREASE	3 15	STOPPER	6 25		
PISTON	7 5	STOPPER COMP	6 24		
PLATE/GUIDE COMP	8 12	STOPPER, PISTON	7 6		
PLATE/I/25X80	8 16	SURCLIP/HOLE	10 7		
PLATE/L/80X59	1 33	SURCLIP/HOLE	11 7		
PLATE/L/80X75	1 32	WASHER	2 6		
PLUG, DRAIN (1/4)	1 13	WASHER	2 14		
PULLEY COMP	2 11	WASHER /M12	6 43		
PULLEY/VB137	2 1	WASHER /M12	8 3		
PULLEY/VB137	2 4	WASHER, PL/M14	1 37		
RING, SNAP/16 C	2 13	WASHER, PL/M22	5 16		
RING, SNAP/17 C	2 12	WASHER, SP/M 8	1 12		
RING, SNAP/52 C	3 6	WASHER, SP/M10	1 36		
RING, SNAP/52 C	3 19	WASHER, SP/M10	6 14		
RING/SNAP	1 16	WASHER, SP/M10	6 17		
RING/SNAP	1 31	WASHER, SP/M12	6 3		
RING/SNAP	3 10	WASHER, SP/M12	6 32		
RING/SNAP	3 23	WASHER, SP/M12	6 36		
ROD PACKING	7 7	WASHER, SP/M12	7 3		
ROD, CHAIN TENSION	2 17	WASHER, SP/M16	2 7		
SCREW SEEMS/M6X16	8 14	WASHER, SP/M20	3 27		
SCREW, PLUS/M4X8	8 17	WASHER/13X17X10	5 23		
SEAL, OIL/TC35528	3 8	WASHER/13X26X06	8 5		
SEAL, OIL/TC35528	3 21	WASHER/20X60X06	3 25		
SEAL/OIL	1 15	WASHER/27X40X2	5 7		
SEAL/OIL	1 30	WASHER/M10	1 39		
SEAL/OIL	3 7	WHEEL/GAUGE ASSY	5 13		
SEAL/OIL	3 20	WHEEL/GAUGE/FRONT	5 18		
SHAFT YOKE ASSY	11 3				
SHAFT/ADJUST	8 1				
SHAFT/COUNTER	1 19				
SHAFT/INPUT	1 14				
SHAFT/SIDE	3 3				
SHAFTYOKE ASSY	10 3				
SHIM, A	1 23				
SHIM/0. 1	1 22				
SHIM/0. 2	1 20				
SHIM/0. 2	1 21				