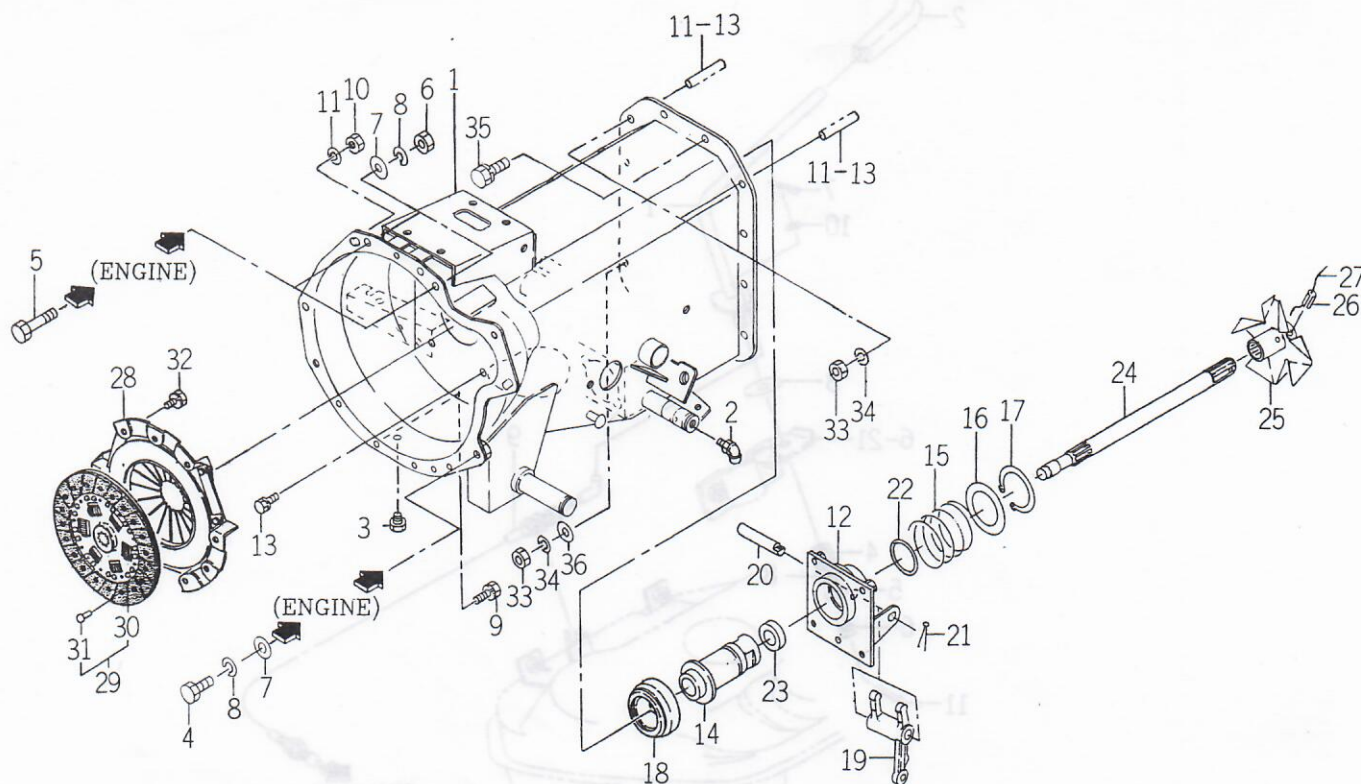


FIG. 9 CLUTCH SYSTEM



1683-120

KEY	PART CODE	DESCRIPTION	QTY	TYPE OF MODEL		I T C	C O L	G R P	REMARKS
				TM215H	TM217H				
1	1683 - 120 - 500 - 10	HOUSING/CLUTCH COMP	1	*	*				
2	V761 - 150 - 000 - 00	NIPPLE/GREASE	1	*	*				
3	1326 - 706 - 002 - 10	PLUG,DRAIN	1	*	*				
4	V201 - 361 - 202 - 50	BOLT/M12X25	2	*	*				
5	V201 - 361 - 204 - 00	BOLT/M12X40	2	*	*				
6	V304 - 460 - 012 - 00	NUT/M12	2	*	*				
7	V411 - 260 - 012 - 00	WASHER /M12	4	*	*				
8	V401 - 160 - 012 - 00	WASHER,SP/M12	4	*	*				
9	V211 - 260 - 801 - 60	BOLT,SEMS (S) M8X16	4	*	*				
10	V334 - 460 - 010 - 00	NUT/M10 7T P=1.25	2	*	*				
11	V401 - 160 - 010 - 00	WASHER,SP/M10	2	*	*				
12	1672 - 120 - 220 - 00	HOLDER/SLEEVE COMP	1	*	*				
13	V211 - 260 - 801 - 60	BOLT,SEMS (S) M8X16	4	*	*				
14	1672 - 120 - 002 - 10	SLEEVE	1	*	*				
15	1672 - 120 - 003 - 00	SPRING/HC64	1	*	*				
16	1672 - 120 - 004 - 00	WASHER/46X70X2	1	*	*				
17	V706 - 140 - 045 - 00	RING/SNAP	1	*	*				
18	1491 - 120 - 001 - 00	BEARING,CLUTCH RS	1	*	*				
19	1435 - 122 - 002 - 00	FORK/RELEASE	1	*	*				
20	1672 - 120 - 006 - 00	PIN/12X75	1	*	*				
21	V500 - 163 - 002 - 00	PIN,SPLIT/3 X20	1	*	*				
22	V721 - 103 - 104 - 50	O - RING/G45	1	*	*				
23	V744 - 120 - 350 - 70	SEAL,OIL/TC20357	1	*	*				
24	1683 - 120 - 051 - 00	SHAFT/INPUT	1	*	*				
25	1683 - 120 - 530 - 10	FAN/HST COMP	1	*	*				

