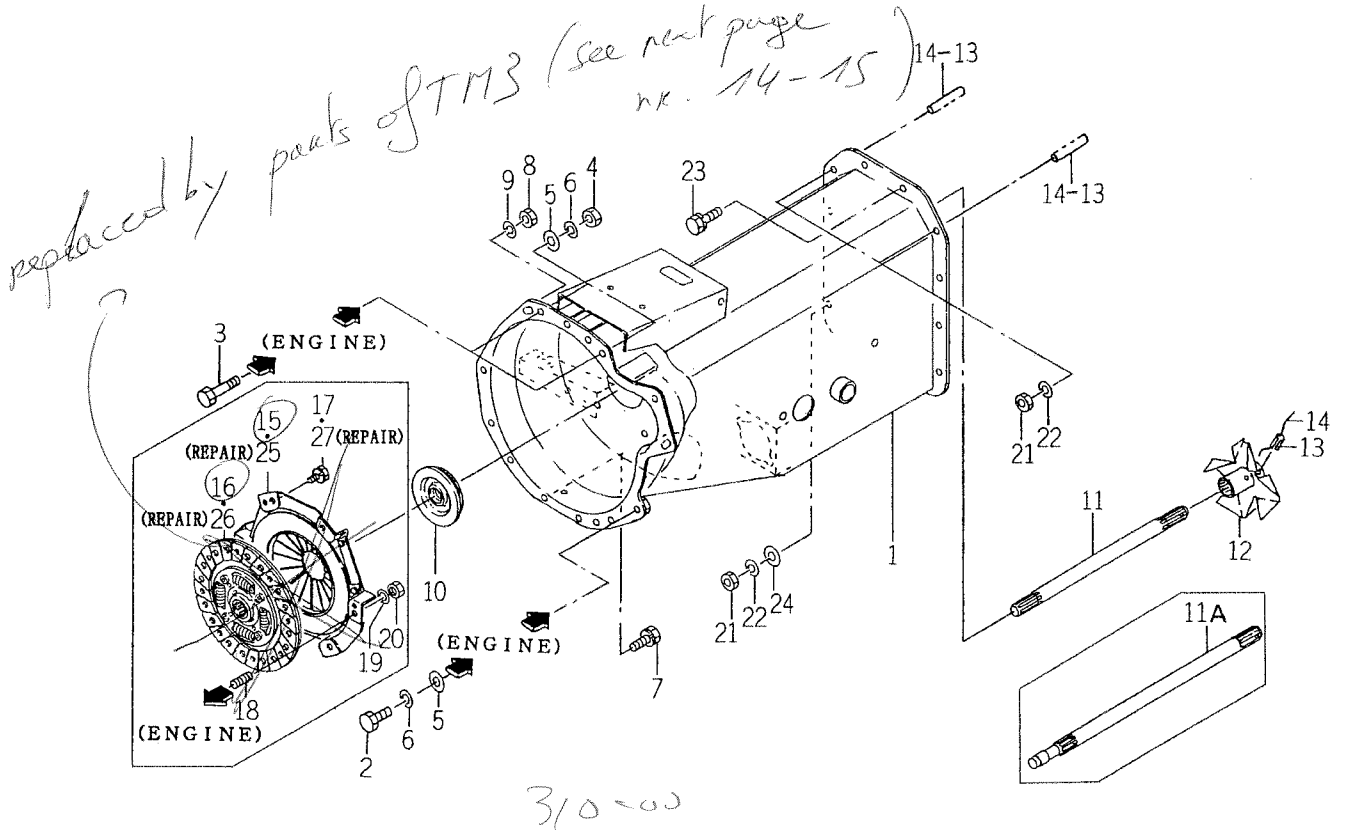


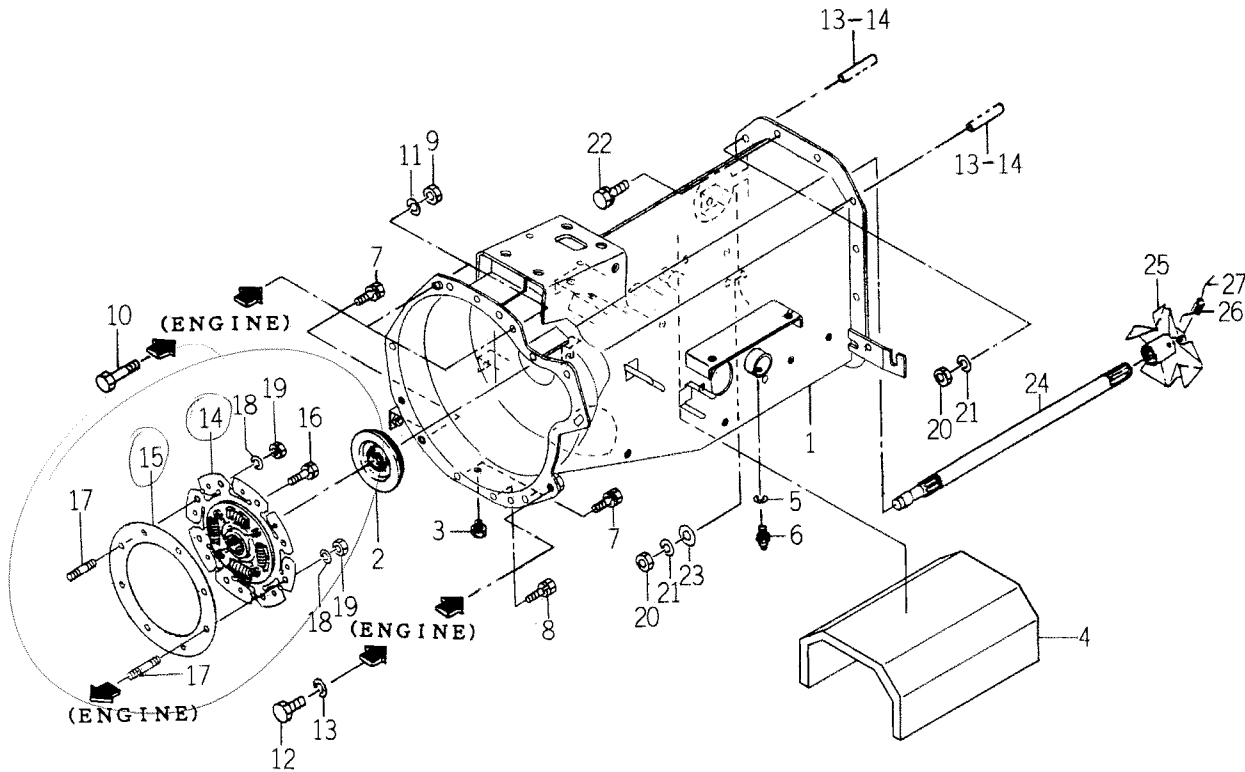
FIG. 10 CLUTCH HOUSING SYSTEM (H TYPE)



1685-120

KEY	PART CODE	DESCRIPTION	S P C	TYPE OF MODEL		I T C	C O L	G R P	REMARKS
				TM223					
1	1685-120-500-20	HOUSING/CLUTCH COMP	*	1		1			
2	V201-361-202-50	BOLT/M12X25	*	2					
3	V201-361-204-00	BOLT/M12X40	*	2					
4	V304-460-012-00	NUT/M12	*	2					
5	V411-260-012-00	WASHER /M12	*	4					
6	V401-160-012-00	WASHER, SP/M12	*	4					
7	V211-260-801-60	BOLT, SEMS (S) M8X16	*	4					
8	V334-460-010-00	NUT/M10 7T P=1.25	*	2					
9	V401-160-010-00	WASHER, SP/M10	*	2					
10	1688-120-052-00	GROMMET/25X70X03	*	1					
11	1685-120-051-10	SHAFT/INPUT	*	1-58					
11A	1685-120-061-00	SHAFT/INPUT	*	1-59					
12	1683-120-530-20	FAN/HST COMP	*	1					
13	V580-140-603-20	PIN, SPRING/6 X32 W	*	2					
14		WIRE	*	2					
15	1685-120-210-00	COVER/CLUTCH/20 ASSY	*	1-59					
16	1685-120-220-00	DISK/CLUTCH/200 COMP	*	1-59					
17	V211-260-802-00	BOLT, SEMS (S)	*	6-59					
18	V251-340-802-50	BOLT/STUD/SEAL	*	2-59					
19	V401-160-008-00	WASHER, SP/M 8	*	2-59					
20	V304-460-008-00	NUT/M8	*	2-59					
21	V304-460-010-00	NUT/M10	*	3					
22	V401-160-010-00	WASHER, SP/M10	*	3					
23	V211-561-003-50	BOLT/S	*	10					
24	V411-260-010-00	WASHER/M10	*	1					
25	1685-120-210-00	COVER/CLUTCH/20 ASSY	R	1					
26	1685-120-220-00	DISK/CLUTCH/200 COMP	R	1					
27	V211-260-802-00	BOLT, SEMS (S)	R	6					

FIG. 10 CLUTCH HOUSING, INPUT SHAFT SYSTEM (H TYPE)



1750-120A-0100, 1750-125A-0100

KEY	PART CODE	DESCRIPTION	S P C	TYPE OF MODEL				I T C	C O L	G R P	REMARKS
				TM3200	TM3200H	TM3240	TM3240H				
1	1750-120-510-30	HOUSING/CLUTCH COMP	*		1		1				
2	1688-120-052-00	GROMMET/25X70X03	*		1		1				
3	V782-160-000-2T	PLUG/SCREW/SEAL	*		1		1				
4	1750-120-051-20	INSULATOR	*		1		1				
5	V401-160-006-00	WASHER, SP/M 6	*		2		2				
6	V760-150-000-00	NIPPLE, GREASE	*		2		2				
7	V211-260-801-60	BOLT, SEMS (S) M8X16	*		3		3				
8	V211-260-803-00	BOLT, SEMS	*		1		1				
9	V334-460-010-00	NUT/M10 7T P=1.25	*		2		2				
10	V203-361-002-00	BOLT/M10X1.25X20	*		2		2				
11	V401-160-010-00	WASHER, SP/M10	*		4		4				
12	V201-361-202-50	BOLT/M12X25	*		2		2				
13	V401-160-012-00	WASHER, SP/M12	*		2		2				
14	1685-120-310-00	DISC/DAMPER ASSY	*		1		1				
15	1685-120-062-00	PLATE/DAMPER	*		1		1				
16	V211-260-802-00	BOLT/S	*		6		6				
17	V251-340-802-5D	BOLT/STUD/SEAL	*		2		2				
18	V401-160-008-00	WASHER, SP/M 8	*		2		2				
19	V304-460-008-00	NUT/M8	*		2		2				
20	V304-460-010-00	NUT/M10	*		3		3				
21	V401-160-010-00	WASHER, SP/M10	*		3		3				
22	V211-561-003-50	BOLT/S	*		10		10				
23	V411-260-010-00	WASHER/M10	*		1		1				
24	1685-120-061-00	SHAFT/INPUT	*		1		1				
25	1683-120-530-20	FAN/HST COMP	*		1		1				
26	V580-140-603-20	PIN, SPRING/6 X32 W	*		2		2				
27		WIRE	*		2		2				