

Ta

TM223 chassis

*RADIATOR SYSTEM	Fig. 1
*MUFFLER SYSTEM	Fig. 2
*AIR CLEANER SYSTEM	Fig. 3
*FILTER SYSTEM	Fig. 4
*FUEL TANK SYSTEM	Fig. 5
*BATTERY SYSTEM	Fig. 6
*ACCEL PEDAL SYSTEM(EXCEPT H TYPE)	Fig. 7
*THROTTLE LEVER SYSTEM	Fig. 8
*CLUTCH HOUSING SYSTEM	Fig. 9
*CLUTCH HOUSING SYSTEM	Fig. 10
*CLUTCH PEDAL SYSTEM	Fig. 11
*TRANSMISSION CASE SYSTEM	Fig. 12
*TRANSMISSION CASE SYSTEM	Fig. 13
*TRANSMISSION CASE SYSTEM	Fig. 14
*HST SYSTEM	Fig. 15
*INPUT GEAR SYSTEM	Fig. 16
*DRIVE PINION SYSTEM	Fig. 17
*DRIVE GEAR SYSTEM	Fig. 18
*RIVERSE GEAR SYSTEM	Fig. 19
*4WD GEAR SYSTEM	Fig. 20
*4WD GEAR SYSTEM	Fig. 21
*MAIN LEVER AND PLUG SYSTEM	Fig. 22
*SUB LEVER SYSTEM	Fig. 23
*SUB LEVER SYSTEM	Fig. 24
*4WD CHANGE SYSTEM	Fig. 25
*4WD CHANGE SYSTEM	Fig. 26
*SUB CHANGE SYSTEM	Fig. 27

*SUB CHANGE SYSTEM	Fig. 28
*PTO GEAR SYSTEM	Fig. 29
*PTO GEAR SYSTEM	Fig. 30
*PTO GEAR SYSTEM	Fig. 31
*PTO SHAFT SYSTEM	Fig. 32
*PTO LEVER SYSTEM	Fig. 33
*PTO LEVER SYSTEM	Fig. 34
*SHIELD COVER SYSTEM	Fig. 35
*MID PTO SYSTEM	Fig. 36
*MID PTO SYSTEM	Fig. 37
*MID PTO LEVER SYSTEM	Fig. 38
*MID PTO LEVER SYSTEM	Fig. 39
*LINK SYSTEM	Fig. 40
*PEDAL SYSTEM	Fig. 41
*PIPING SYSTEM	Fig. 42
*DIFF SYSTEM	Fig. 43
*DIFF SYSTEM	Fig. 44
*REAR AXLE SYSTEM	Fig. 45
*REAR AXLE SYSTEM	Fig. 46
*WHEEL SHAFT SYSTEM	Fig. 47
*BRAKE SYSTEM(1)	Fig. 48
*BRAKE SYSTEM(2)	Fig. 49
*BRAKE SYSTEM(2)	Fig. 50
*BRAKE SYSTEM(2)	Fig. 51
*TIRE SYSTEM	Fig. 52
*STEERING WHEEL SYSTEM	Fig. 53
*CYLINDER SYSTEM	Fig. 54
*STEERING SYSTEM	Fig. 55
*PIPING SYSTEM	Fig. 56
*PIPING SYSTEM	Fig. 57
*AXLE BRACKET,BUMPER SYSTEM	Fig. 58
*FRONT HITCH SET	Fig. 59
*DRIVE SHAFT SYSTEM	Fig. 60

*DRIVE SHAFT SYSTEM	Fig. 61
*DRIVE PINION SYSTEM	Fig. 62
*AXLE HOUSING SYSTEM	Fig. 63
*FINAL GEAR,FINAL DRIVE SHAFT	Fig. 64
*TIE ROD SYSTEM	Fig. 65
*FRONT WHEEL,TIRE SYSTEM	Fig. 66
*CYLINDER CASE SYSTEM	Fig. 67
*LIFT ARM SYSTEM	Fig. 68
*CYLINDER SYSTEM	Fig. 69
*POSITION LEVER SYSTEM	Fig. 70
*DAMPER SET	Fig. 71
*AUX VALVE SET	Fig. 72
*PIPING SYSTEM	Fig. 73
*3P LINK SYSTEM	Fig. 74
*HOOD SYSTEM	Fig. 75
*GRILLE SYSTEM	Fig. 76
*STEERING COVER SYSTEM	Fig. 77
*SIDE COVER SYSTEM	Fig. 78
*FENDER SYSTEM	Fig. 79
*LEVER GUIDE,SEAT BRACKET SYSTEM	Fig. 80
*SEAT SYSTEM	Fig. 81
*SEAT SYSTEM	Fig. 82
*STEP SYSTEM	Fig. 83
*STEP SYSTEM	Fig. 84
*MIRROR AND HEAD LAMP SYSTEM	Fig. 85
*LAMP SYSTEM	Fig. 86
*LAMP SYSTEM	Fig. 87
*REFLECTOR AND LAMP SYSTEM	Fig. 88
*PANEL SYSTEM	Fig. 89
*SWITCH SYSTEM(1)	Fig. 90
*SWITCH SYSTEM(2)	Fig. 91
*HARNESS SYSTEM	Fig. 92
*HARNESS SYSTEM	Fig. 93

*ORNAMENT,LABEL	Fig. 94
*LABEL	Fig. 95
*LABEL	Fig. 96
*LABEL	Fig. 97
*LABEL	Fig. 98
*LABEL	Fig. 99
*TOOL	Fig. 100
*DRAW BAR HITCH SET	Fig. 101
*K200-053-000-00	Fig. 102
*K211-001-000-00	Fig. 103
*1683-202-500-00	Fig. 104
*1685-211-500-00,10	Fig. 105

CHASSIS MODEL	ENGINE MODEL	Parts Catalogue No.
TM223 (H TYPE)	E3112-B05	6004-097-200-10
TM223 (EXCEPT H TYPE)	E3112-B07	6004-097-240-0A

Directions for use of Parts Catalogue

1. Applicable model of machines

All component and option parts used for TM223 tractors are listed in this parts catalogue.

1) MODEL TYPE

- F FOUR WHEEL DRIVE. STD
- F H FOUR WHEEL DRIVE. HST
- S INDEPENDENT PTO CLUTCH & POWER STEERING
- M MID PTO
- U POWER STEERING

2) AREA CODE

- E 1 ASIA
- E 4 EUROPE AND OCEANIA

2. Explanation for head paragraph

KEY	PART CODE	DESCRIPTION	S P C	TYPE OF MODEL						I T C	C O L	G R P	REMARKS
				SSM48M	SSM48F	SSM48G	SRM48M	SRM48F	SRM48G				
1	8595-211-001-20	CASE/UPPER	*	1									
1A	8657-201-001-00	CASE/UPPER	*	1			1						
2	8595-211-002-10	CASE/LOWER	*	1			2						
3	V523-100-001-00	PIN	*	1			1						
4	V211-260-003-00	BOLT, SEMS	*	1			1						

- ① KEY shows the location of parts diagramed in the illustration.
- ② Parts numbers begin with `V` and `W` are standard parts of the market.
- ③ `LH` and `RH` on the parts name are described against the moving direction of the machine or are described on the condition how to install parts on the machines.

2

- ④ SPC : The following symbol classifies parts to be used for machines.
- ` * ` means standard parts.
 - ` T ` shows that the parts can be installed as optional parts.
 - ` R ` shows that the parts can be used as applicable parts to replace originally equipped parts.
- ⑤ Upper column : QTY shows the number of parts to be used for one unit of machine.
- ` M ` is indicated for parts supplied by a meter long.
 - ` ℓ ` is indicated for parts supplied by liter.
 - ` AR ` is indicated for parts need to be adjusted or regulated.
- Lower column : serial number
- 229 means serial number up to 229.
 - 230 means serial number 230 and after.
- ⑥ ITC : Interchangeability
- ` 1 ` ... OLD ← NEW
New parts can be used in place of the old parts.
 - ` 2 ` ... OLD → NEW
Old parts can be used in place of the new parts.
 - ` 3 ` ... OLD ↔ NEW
Old parts and new parts can not be replaced each other.
- ⑦ COL : Color code
- Color is signified with color code number for colored parts.
Please see the color list shown in the next page.
- ⑧ GRP : Parts shown in this column can be replaced by SET parts.
- Example : Parts marked Ⓐ can be replaced by parts marked Ⓑ, and Ⓓ for Ⓒ, so the rest follow in the same alphabetical order.
- ⑨ Remarks
- * Other maker's part code number is shown in this column.
 - * When Fig. No. is shown in the Remark column of SET parts or ASSY parts, each of their component parts are listed in said Fig. No.

3. Color :

The following colors are used color parts.

COLOR CODE	COLOR	SPRAY TYPE CODE NUMBER	PAINTS 4K DRUM	PAINTS 16K DRUM
4 G	CRYSTAL BLUE	1300-957-001-10	1300-957-003-00	1300-957-004-00
5 I	SUNSET GRAY	130-959-001-10	1300-959-003-00	1300-959-004-00
6 G	SUMMER WHITE	1300-958-001-10	1300-958-003-00	1300-958-004-00
7 F	MIRROR BLACK	1300-954-001-10	1300-954-003-00	1300-954-004-00
8 E	SILVER MIST	1300-968-001-10	1300-968-003-00	1300-698-004-00
8 F	BRILLIANT BROWN METALLIC	1300-972-001-10	—————	—————

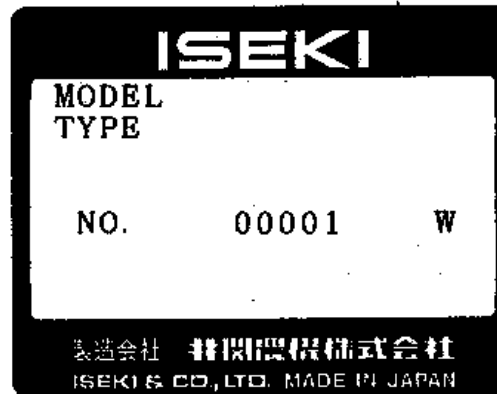
4. Serial Numbers :

- 1) For engines serial number is stamped on CYLINDER BLOCK ASSY.

Please see Fig. No. 5-1.

- 2) For chassies serial number is shown on the LABEL.

Please see



5. Parts Order

- 1) Parts numbers listed in the parts catalogue are all registered in "ISEKI on-line computer".
- 2) When you order parts, please make sure of correct numbers.
- 3) When substitute parts is available, the part number ordered will be automatically turned to a new part number.
- 4) Please be sure to use "ISEKI GENUINE PARTS".

Any other similar parts other than ISEKI parts when used may cause a trouble that makes us unable to repair or guarantee the warrant.

P. 2 *** STRUCTURE TABLE OF MODEL ***

M	T											
0	2FFFF											
D	2HMUU											
E	3SUEE											
L	ME14											
F	E4											
I	4											
G												
46	****											
47	****											
48	****											
49	* *											
50	*											
51	*											
52	TTTT											
53	****											
54	****											
55	****											
56	****											
57	*											
58	****											
59	IT T											
60	*											
61	****											
62	****											
63	****											
64	****											
65	****											
66	TTTT											
67	****											
68	****											
69	****											
70	****											
71	T											
72	T											
73	****											
74	****											
75	****											
76	****											
77	****											
78	****											
79	****											
80	****											
81	** *											
82	*											
83	***											
84	*											
85	****											
86	** *											
87	*											
88	T											
89	****											
90	****											

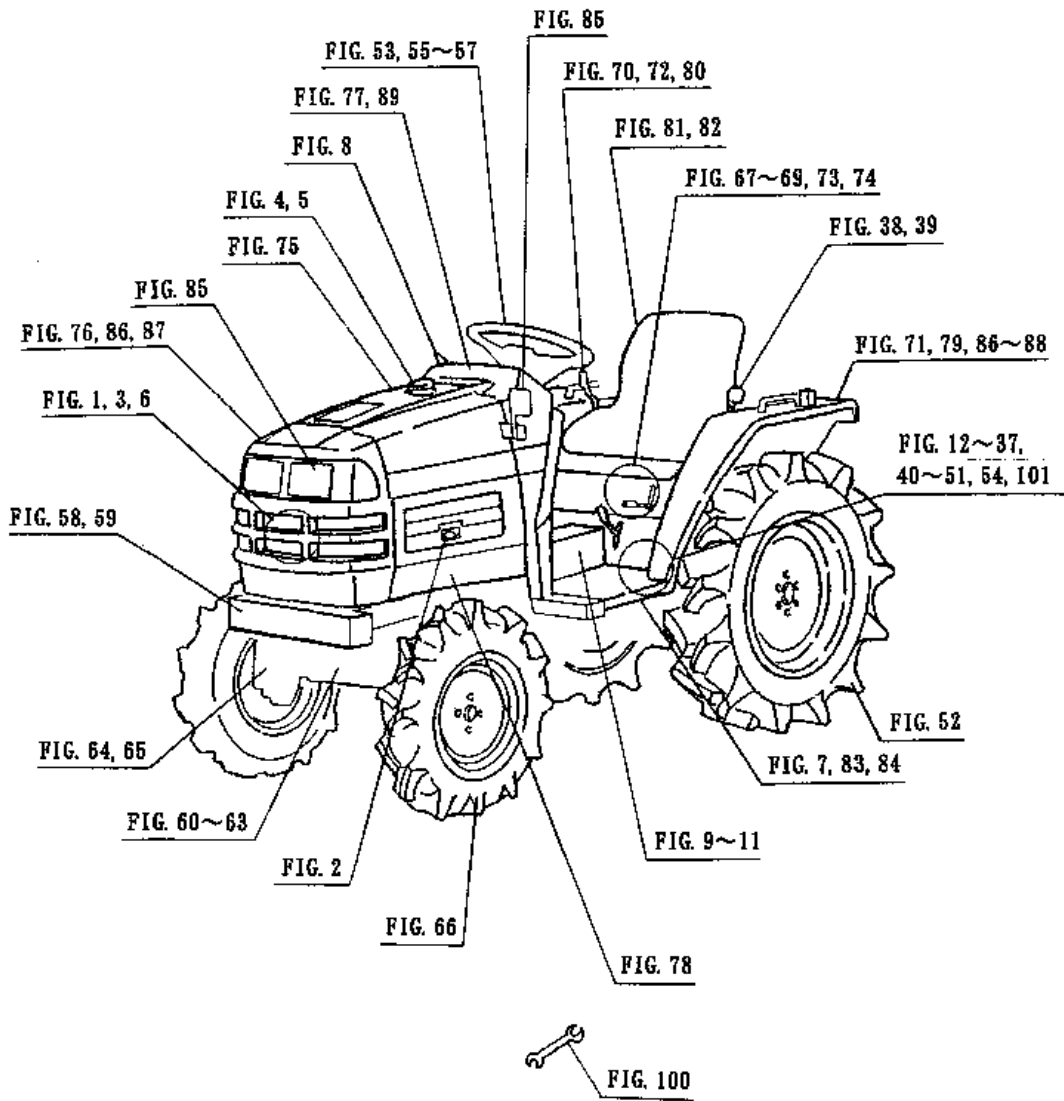
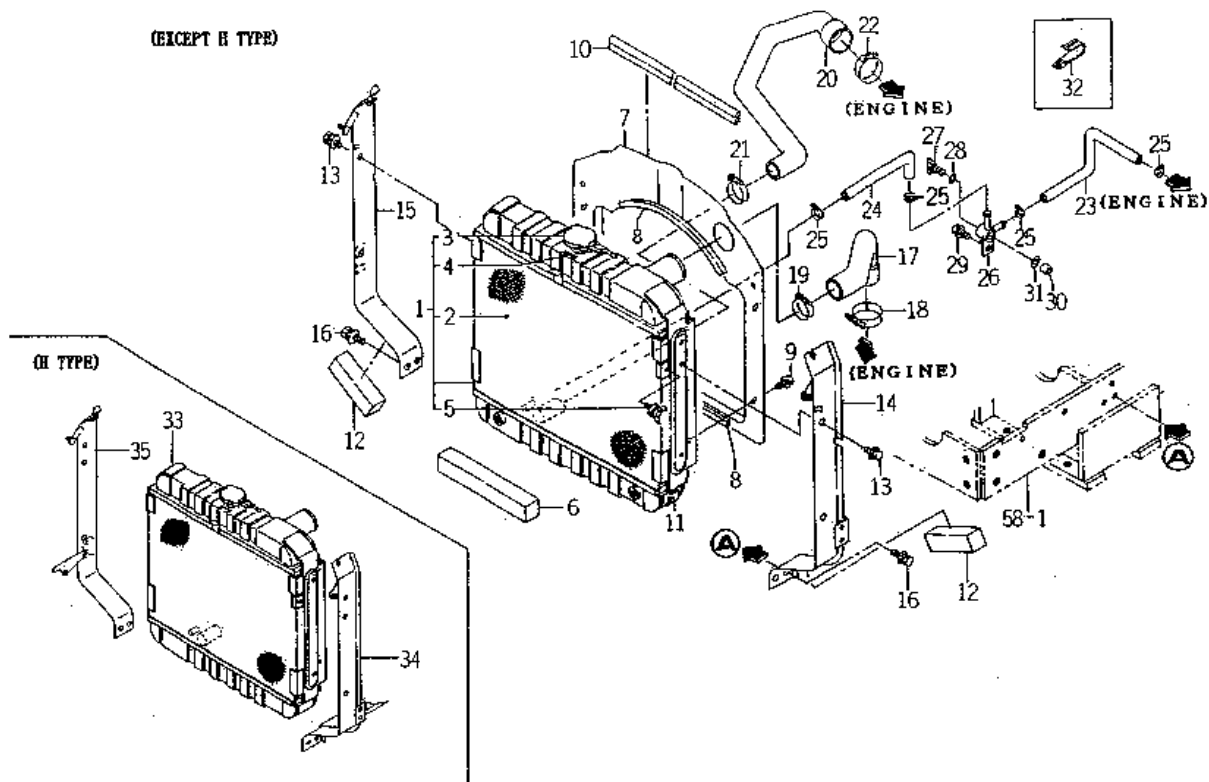
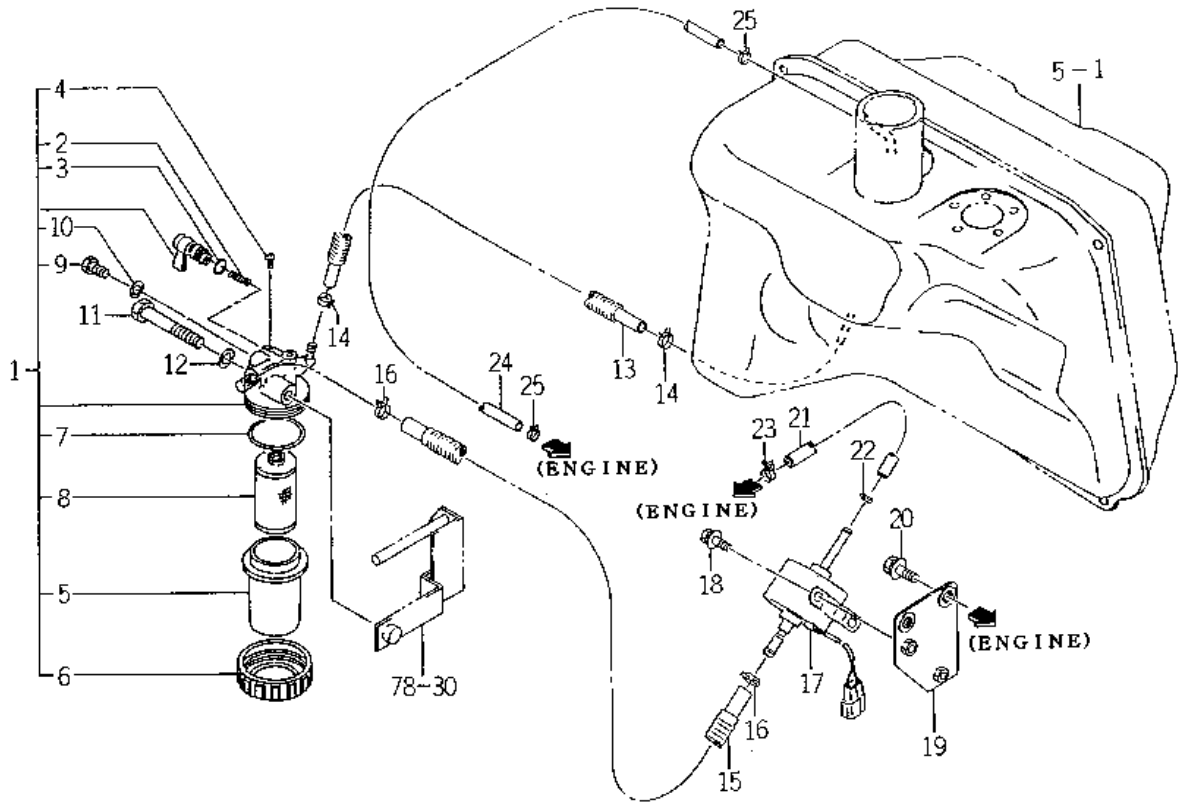


FIG. 1 RADIATOR SYSTEM



KEY	Part Code	Description	S P C	Type of Model					I T C	C O L	G R P	Remarks
				TM223								
1	1684-102-200-10	RADIATOR ASSY	*	1					1			
2	1639-102-202-00	NET/WIRE COMP	*	1								
3	1614-102-213-00	CAP	*	1								
4	1614-102-214-00	HOSE	*	1								
5	V273-360-601-20	BOLT/WING/SP	*	1								
6	1682-102-003-00	INSULATOR/15X20X420	*	1								
7	1685-102-241-00	SHROUD	*	1								
8	1675-102-002-00	INSULATOR	*	2								
9	V210-360-601-20	BOLT,SEMS	*	4								
10	1612-111-001-00	INSULATOR	*	1								
11	1612-102-005-00	INSULATOR	*	1								
12	1672-102-004-00	INSULATOR	*	2								
13	V211-360-801-60	BOLT,SEMS (SP)	*	4								
14	1685-102-210-00	PLATE/LH COMP	*	1 -117								
15	1685-102-220-00	PLATE/RH COMP	*	1 -117								
16	V211-360-801-60	BOLT,SEMS (SP)	*	4								
17	1675-102-004-00	HOSE/RADIATOR/INLET	*	1								
18	J061-236-044-00	CLAMP/WIRE/36-44	*	1								
19	J061-230-038-00	CLAMP/WIRE/30-38	*	1								
20	1614-102-002-00	HOSE/RADIATOR/OUTLET	*	1								
21	J061-224-032-00	CLAMP/WIRE/24-32	*	1								
22	J061-236-044-00	CLAMP/WIRE/36-44	*	1								
23	1682-102-004-00	HOSE/250	*	1								
24	1593-102-004-20	HOSE/210	*	1 -117								
25	J061-210-015-00	CLAMP/WIRE/10-15	*	4								
26	1560-104-010-40	CONNECTOR	*	1								
27	1424-101-203-00	PLUG	*	1								
28	1424-101-204-00	PACKING	*	1								
29	V211-360-804-00	BOLT	*	1								
30	1617-102-006-00	HUB/09X14X20	*	1								

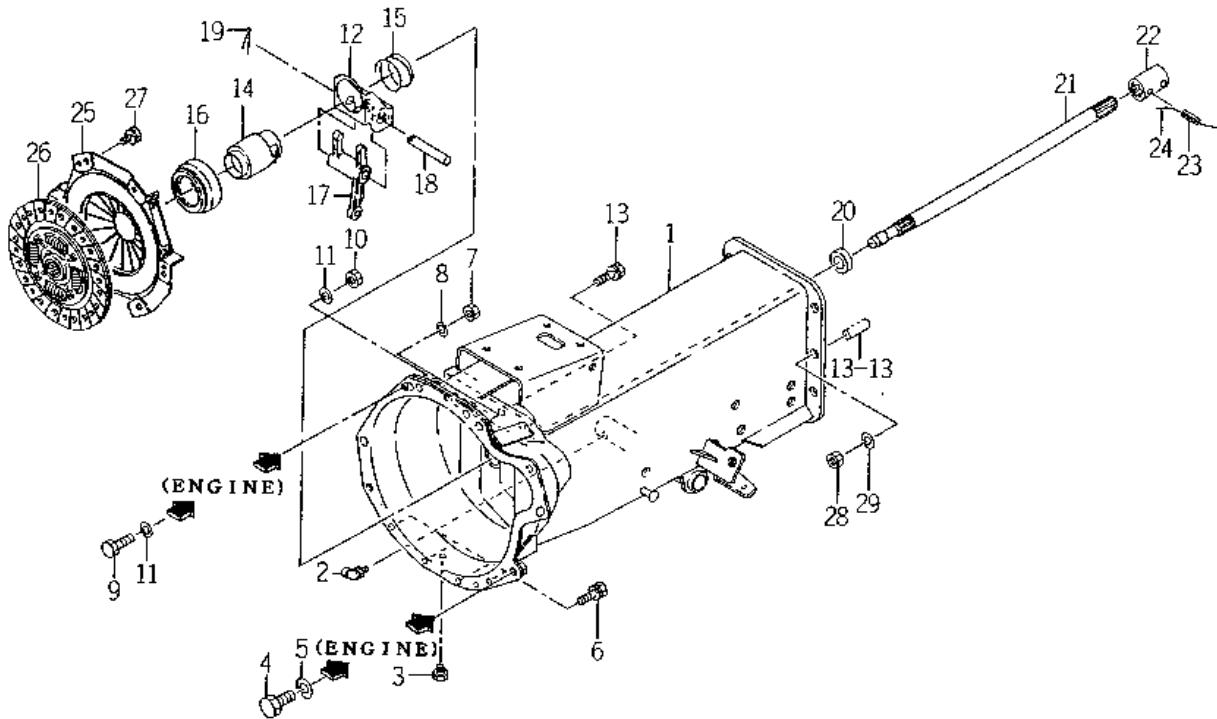
FIG. 4. FILTER SYSTEM



KEY	Part Code	Description	S P C	Type of Model					I T C	C O L	G R P	Remarks
				TM223								
1	1672-105-210-00	FILTER/FUEL ASSY	*	1								
2	1415-102-007-00	SPRING,VALVE	*	1								
3	V720-102-401-00	O-RING/P10A	*	1								
4	1415-102-008-00	VIS	*	1								
5	1415-102-009-00	CUP	*	1								
6	1444-102-204-00	NUT,RING	*	1								
7	V720-103-504-40	O-RING/P44	*	1								
8	1415-102-011-00	ELEMENT	*	1								
9	1572-102-003-00	BOLT/M06X08/APSET	*	2								
10	1415-102-013-00	PACKING	*	2								
11	V201-260-806-50	BOLT/M 8X65	*	1								
12	V401-160-008-00	WASHER,SP/M 8	*	1								
13	1685-105-001-00	HOSE/06X10X350	*	1								
14	J062-111-120-00	CLIP/HOSE/11.1-12	*	2 88-								
15	1614-105-003-10	HOSE/06X10X250	*	1								
16	J062-111-120-00	CLIP/HOSE/11.1-12	*	2								
17	3805-311-210-00	PUMP/FUEL	*	1								
18	V210-360-601-20	BOLT,SEMS	*	2								
19	1685-105-210-00	BRACKET/FUEL COMP	*	1								
20	V211-360-801-60	BOLT,SEMS (SP)	*	2								
21	1608-201-008-10	HOSE/320	*	1								
22	J062-104-111-00	CLIP/HOSE/10.4-11.1	*	1								
23	J061-210-012-00	CLAMP/WIRE/10-12	*	1								
24	1612-105-002-00	HOSE/650	*	1								
25	J062-087-093-00	CLIP/HOSE/8.7-9.3	*	2								

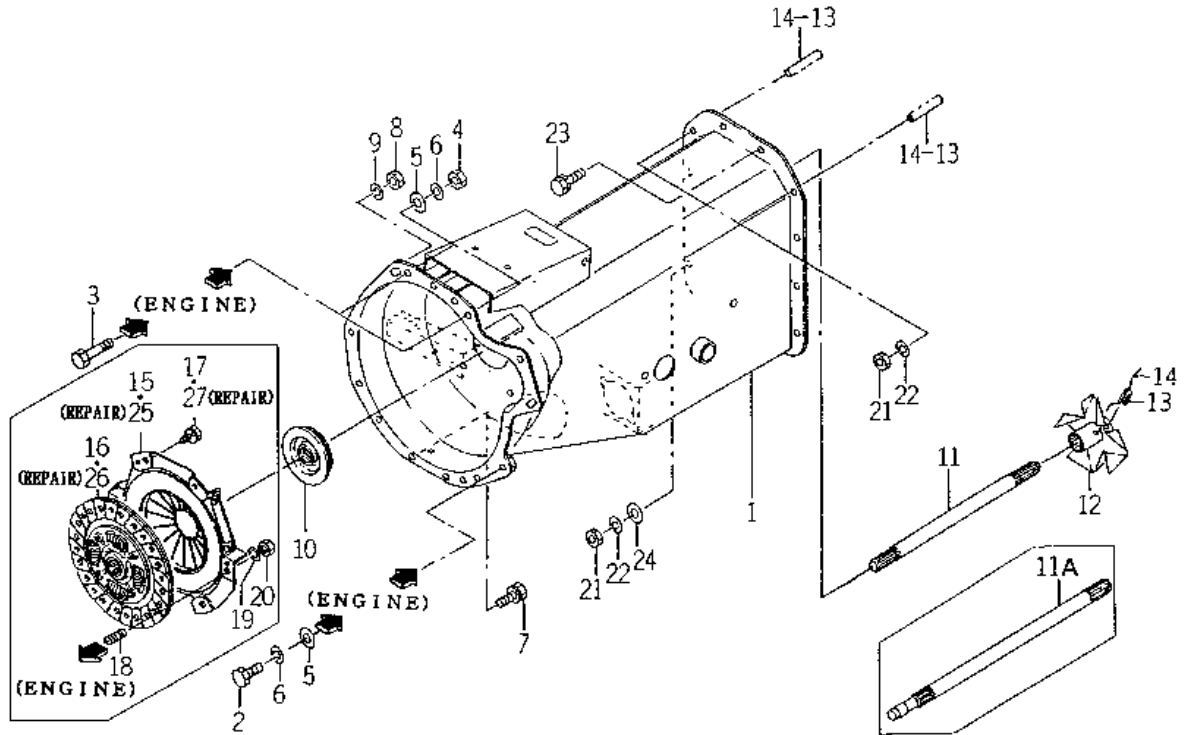
92

FIG. 9 CLUTCH HOUSING SYSTEM (EXCEPT H TYPE)



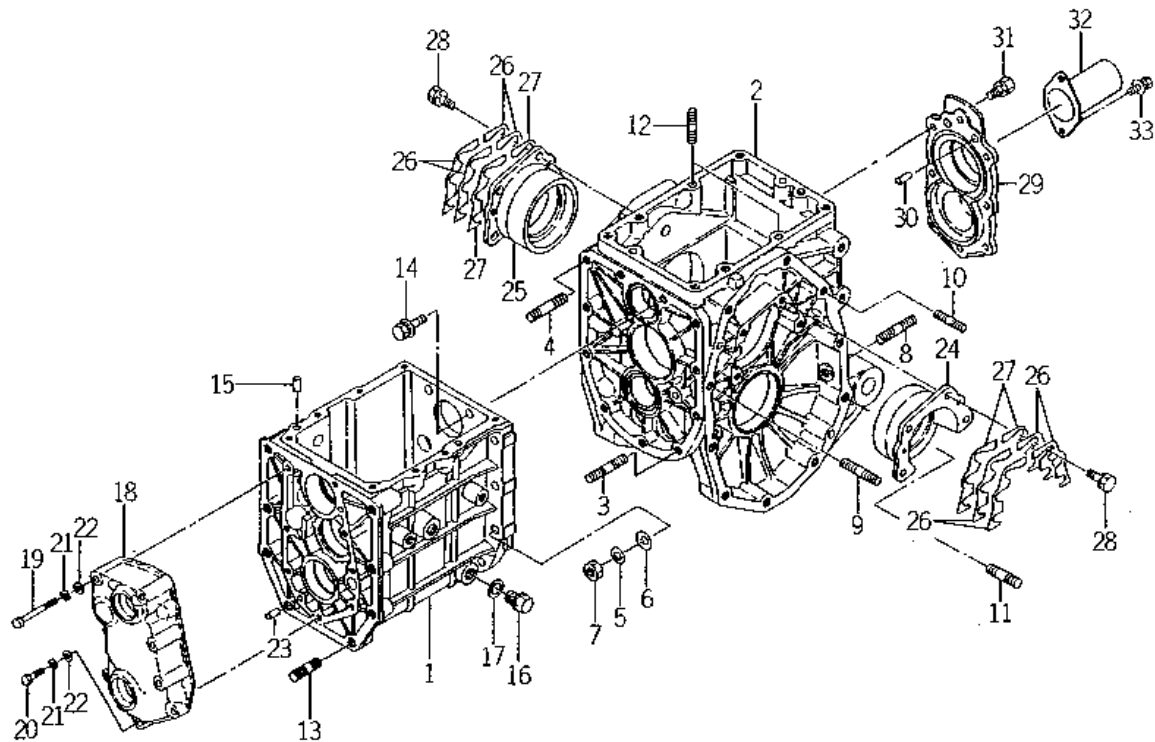
KEY	Part Code	Description	S P C	Type of Model						I T C	C O L	G R P	Remarks
				TM223									
1	1684-120-200-10	HOUSING/CLUTCH COMP	*	1									
2	V763-150-000-00	NIPPLE,GREASE/PT1/8	*	1									
3	1326-706-002-10	PLUG,DRAIN	*	1									
4	V201-361-202-50	BOLT/M12X25	*	2									
5	V401-160-012-00	WASHER,SP/M12	*	2									
6	V211-260-801-60	BOLT,SEMS (S) M8X16	*	4									
7	V334-460-010-00	NUT/M10 7T P=1.25	*	2									
8	V401-160-010-00	WASHER,SP/M10	*	4									
9	V203-361-003-50	BOLT	*	2									
10	V334-460-010-00	NUT/M10 7T P=1.25	*	2									
11	V411-260-010-00	WASHER/M10	*	4									
12	1434-122-230-10	BRACKET COMP	*	1									
13	V211-260-801-60	BOLT,SEMS (S) M8X16	*	2									
14	1672-120-007-00	SLEEVE	*	1									
15	1434-120-005-00	SPRING/HC50	*	1									
16	1491-120-001-00	BEARING,CLUTCH RS	*	1									
17	1435-122-002-00	FORK/RELEASE	*	1									
18	1672-120-006-00	PIN/12X75	*	1									
19	V500-163-002-00	PIN,SPLIT/3 X20	*	1									
20	V744-120-350-70	SEAL,OIL/TC20357	*	1									
21	1682-120-001-00	SHAFT/INPUT	*	1									
21A	1684-120-001-10	SHAFT/INPUT	*	1									
22	1435-120-002-30	COUPLING/16X27X62	*	1									
23	V580-140-603-20	PIN,SPRING/6 X32 W	*	2									
24		WIRE	*	1									
25	1684-120-210-00	COVER/CLUTCH ASSY	*	1									
26	1684-120-220-00	DISK/CLUTCHCOMP	*	1									
27	V211-260-802-00	BOLT,SEMS (S)	*	6									
28	V304-460-012-00	NUT/M12	*	8									
29	V401-160-012-00	WASHER,SP/M12	*	8									

FIG. 10 CLUTCH HOUSING SYSTEM (H TYPE)



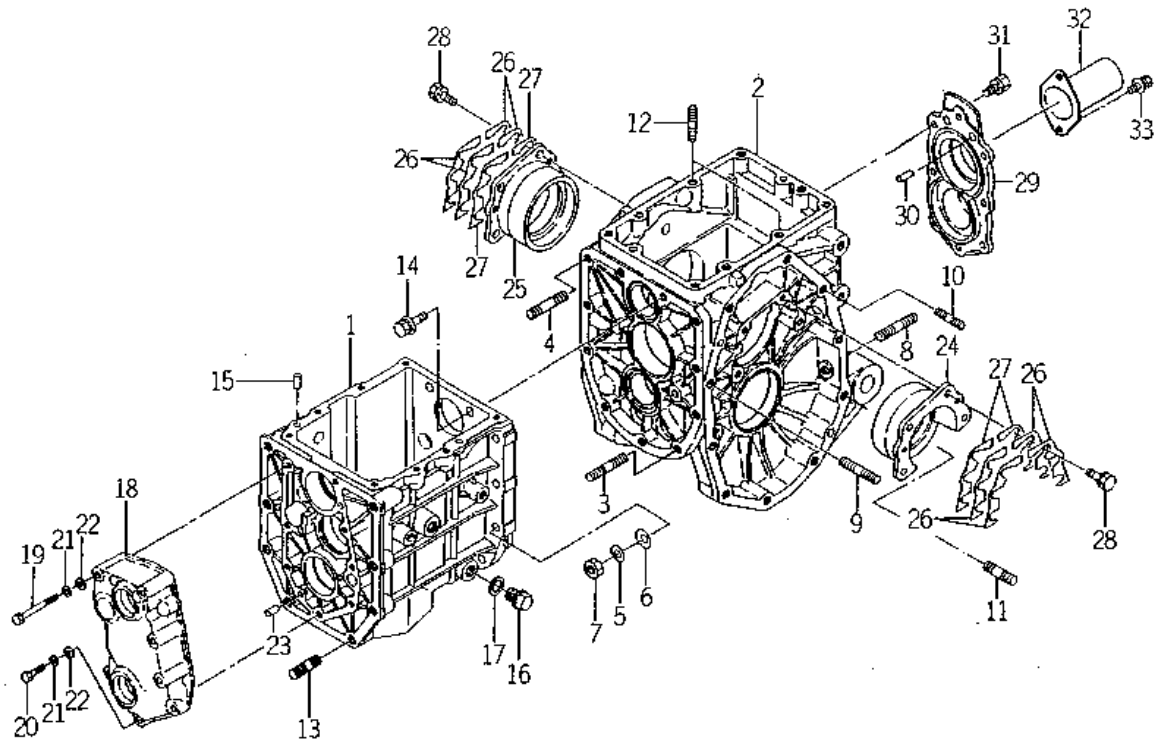
KEY	Part Code	Description	S P C	Type of Model					I T C	C O L	G R P	Remarks
				TM223								
1	1685-120-500-20	HOUSING/CLUTCH COMP	*	1 -135					1			
2	V201-361-202-50	BOLT/M12X25	*	2								
3	V201-361-204-00	BOLT/M12X40	*	2								
4	V304-460-012-00	NUT/M12	*	2								
5	V411-260-012-00	WASHER /M12	*	4								
6	V401-160-012-00	WASHER,SP/M12	*	4								
7	V211-260-801-60	BOLT,SEMS (S) M8X16	*	4								
8	V334-460-010-00	NUT/M10 7T P=1.25	*	2								
9	V401-160-010-00	WASHER,SP/M10	*	2								
10	1688-120-052-00	GROMMET/25X70X03	*	1								
11	1685-120-051-10	SHAFT/INPUT	*	1 -58								
11A	1685-120-061-00	SHAFT/INPUT	*	1 -59-								
12	1683-120-530-20	FAN/HST COMP	*	1								
13	V580-140-603-20	PIN,SPRING/6 X32 W	*	2								
14		WIRE	*	2								
15	1685-120-210-00	COVER/CLUTCH/20 ASSY	*	1 -106								
16	1685-120-220-00	DISK/CLUTCH/200 COMP	*	1 -106								
17	V211-260-802-00	BOLT,SEMS (S)	*	6 59-								
18	V251-340-802-5D	BOLT/STUD/SEAL	*	2 107-								
19	V401-160-008-00	WASHER,SP/M 8	*	2 107-								
20	V304-460-008-00	NUT/M8	*	2 107-								
21	V304-460-010-00	NUT/M10	*	3								
22	V401-160-010-00	WASHER,SP/M10	*	3								
23	V211-561-003-50	BOLT/S	*	10								
24	V411-260-010-00	WASHER/M10	*	1								
25	1685-120-210-00	COVER/CLUTCH/20 ASSY	R	1								
26	1685-120-220-00	DISK/CLUTCH/200 COMP	R	1								
27	V211-260-802-00	BOLT,SEMS (S)	R	6								

FIG. 12 TRANSMISSION CASE SYSTEM (E1 TYPE)



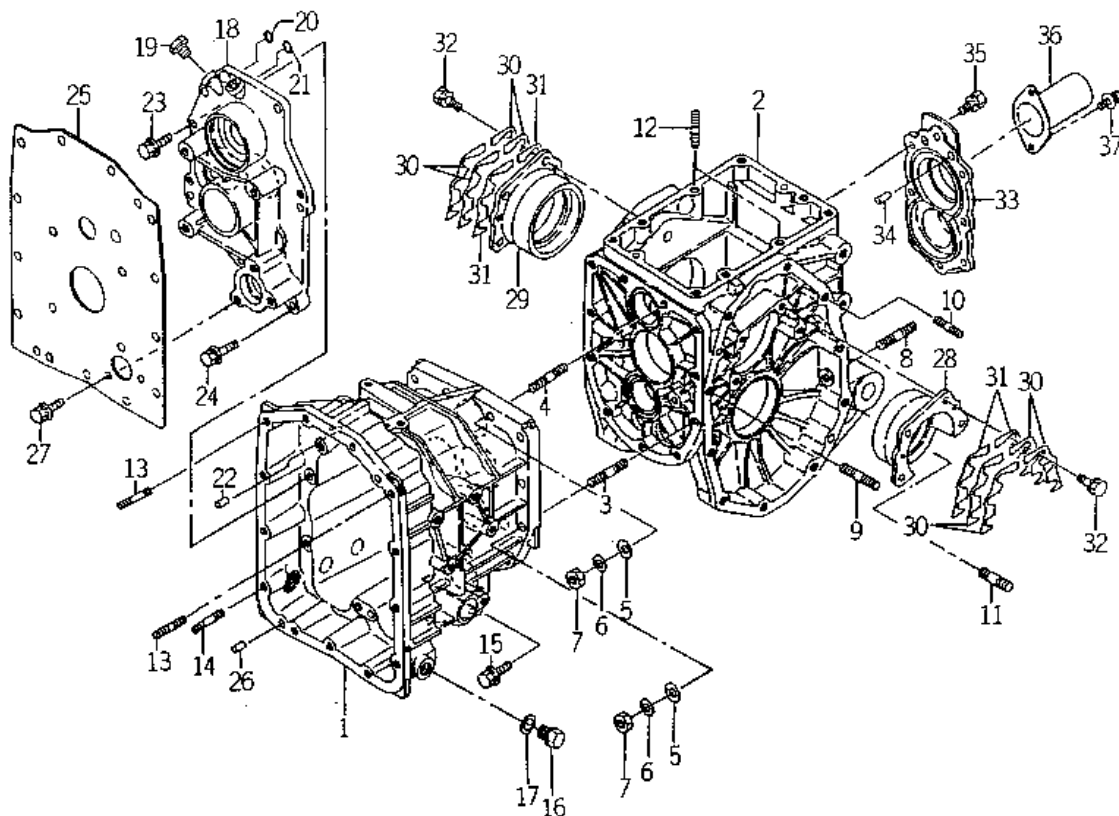
KEY	Part Code	Description	S P C	Type of Model						I T C	C O L	G R P	Remarks
				TM223									
1	1672-201-004-00	CASE/TRANSMISSION/FR	*	1									
2	1688-201-055-00	CASE/TRANSMISSION/RE	*	1									
3	V252-341-003-00	BOLT/STUD	*	2									
4	V252-341-003-50	BOLT/M10X35	*	7									
5	V401-160-010-00	WASHER,SP/M10	*	9									
6	V411-260-010-00	WASHER/M10	*	9									
7	V304-260-010-00	NUT	*	9									
8	V251-261-202-5D	BOLT/STUD/SEAL	*	2									
9	V252-261-004-00	BOLT/STUD	*	2									
10	V252-261-005-50	BOLT/M10X55	*	2									
11	V252-261-204-50	BOLT/M12X45	*	2									
12	V252-341-003-00	BOLT/STUD	*	2									
13	V252-341-203-00	BOLT/M12X30	*	8									
14	V211-361-003-50	BOLT/M10X35	*	2									
15	V522-100-801-80	PIN	*	2									
16	1427-201-007-00	PLUG,DRAIN	*	1									
17	1427-201-008-00	WASHER,SEAL/16	*	1									
18	1427-201-005-00	METAL/INPUT	*	1									
19	V201-260-806-00	BOLT/M 8X60	*	4									
20	V201-260-803-50	BOLT/M 8X35	*	4									
21	V401-160-008-00	WASHER,SP/M 8	*	8									
22	V411-260-008-00	WASHER,PL/M 8	*	8									
23	V522-100-801-80	PIN	*	2									
24	1427-201-012-00	METAL,DIFF-CASE LH	*	1									
25	1427-201-013-00	METAL,DIFF-CASE RH	*	1									
26	1427-201-014-00	SHIM,DIFF-CASE A	*	8									
27	1427-201-015-00	SHIM,DIFF-CASE B	*	4									
28	V211-560-802-50	BOLT,SEMS/M8X25 7T	*	8									
29	1688-201-056-00	METAL/PTO	*	1									
30	V523-101-002-40	PIN	*	2									

FIG. 13 TRANSMISSION CASE SYSTEM (E4 TYPE EXCEPT H)



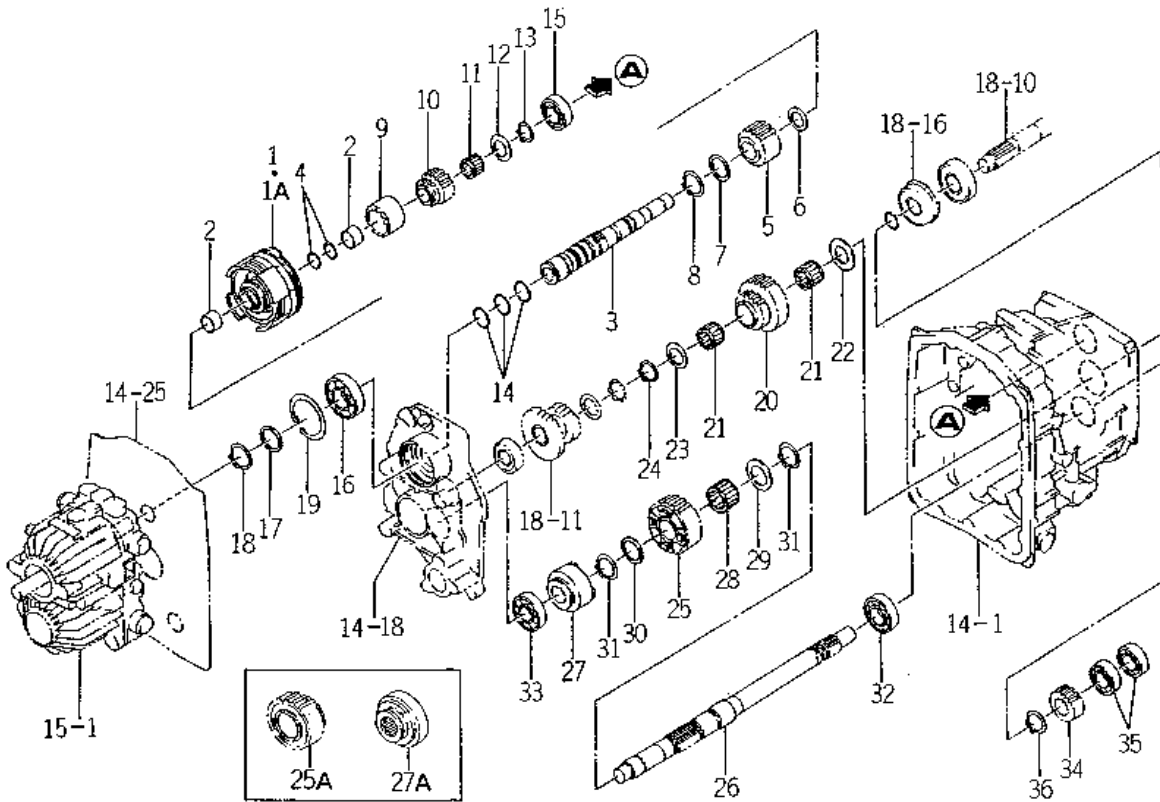
KEY	Part Code	Description	S P C	Type of Model						I T C	C O L	G R P	Remarks
				TM223									
1	1682-201-001-10	CASE/TRANSMISSION/F	*	1									
2	1688-201-055-00	CASE/TRANSMISSION/RE	*	1									
3	V252-341-003-00	BOLT/STUD	*	2									
4	V252-341-003-50	BOLT/M10X35	*	7									
5	V401-160-010-00	WASHER,SP/M10	*	9									
6	V411-260-010-00	WASHER/M10	*	9									
7	V304-460-010-00	NUT/M10	*	9									
8	V251-261-202-5D	BOLT/STUD/SEAL	*	2									
9	V252-261-004-00	BOLT/STUD	*	2									
10	V252-261-005-50	BOLT/M10X55	*	2									
11	V252-341-204-50	BOLT/STUD	*	2									
12	V252-341-003-00	BOLT/STUD	*	2									
13	V252-341-203-00	BOLT/M12X30	*	8									
14	V211-661-003-50	BOLT/SP	*	2									
15	V522-100-801-80	PIN	*	4									
16	1427-201-007-00	PLUG,DRAIN	*	2									
17	1427-201-008-00	WASHER,SEAL/16	*	2									
18	1427-201-005-00	METAL/INPUT	*	1									
19	V201-260-806-00	BOLT/M 8X60	*	4									
20	V201-260-803-50	BOLT/M 8X35	*	4									
21	V401-160-008-00	WASHER,SP/M 8	*	8									
22	V411-260-008-00	WASHER,PL/M 8	*	8									
23	V522-100-801-80	PIN	*	2									
24	1427-201-012-00	METAL,DIFF-CASE LH	*	1									
25	1427-201-013-00	METAL,DIFF-CASE RH	*	1									
26	1427-201-014-00	SHIM,DIFF-CASE A	*	8									
27	1427-201-015-00	SHIM,DIFF-CASE B	*	4									
28	V211-560-802-50	BOLT,SEMS/M8X25 7T	*	8									
29	1688-201-056-00	METAL/PTO	*	1									
30	V523-101-002-40	PIN	*	2									

FIG. 14 TRANSMISSION CASE SYSTEM (H TYPE)



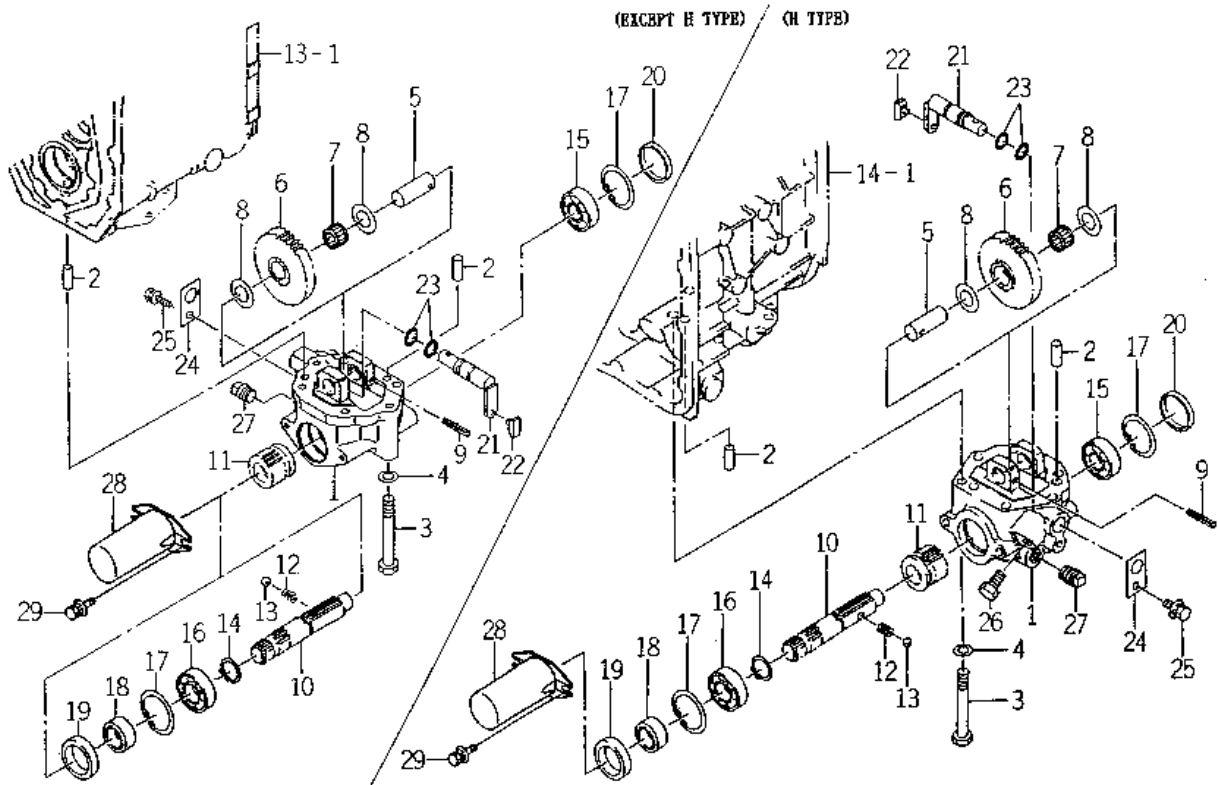
KEY	Part Code	Description	S P C	Type of Model					I T C	C O L	G R P	Remarks
				TM223								
1	1688-201-051-10	CASE/TRANSMISSION/HS	*	1								
2	1688-201-055-00	CASE/TRANSMISSION/RE	*	1								
3	V252-341-003-50	BOLT/M10X35	*	8								
4	V251-341-003-5D	BOLT/STUD/SEAL	*	2								
5	V411-260-010-00	WASHER/M10	*	10								
6	V401-160-010-00	WASHER,SP/M10	*	10								
7	V304-260-010-00	NUT	*	10								
8	V251-261-202-5D	BOLT/STUD/SEAL	*	2								
9	V252-261-004-00	BOLT/STUD	*	2								
10	V252-261-005-50	BOLT/M10X55	*	2								
11	V252-341-204-50	BOLT/STUD	*	2								
12	V252-341-003-00	BOLT/STUD	*	2								
13	V252-341-002-00	BOLT/STUD	*	2								
14	V251-341-002-50	BOLT/STUD	*	1								
15	V211-661-005-00	BOLT/SP	*	1								
16	1427-201-007-00	PLUG,DRAIN	*	2								
17	1427-201-008-00	WASHER,SEAL/16	*	2								
18	1688-201-052-00	METAL/HST	*	1								
19	1326-706-002-10	PLUG,DRAIN	*	2								
20	V720-111-900-70	O-RING/P 7	*	1								
21	V720-111-900-50	O-RING/P5 HS90	*	1								
22	V523-101-002-40	PIN	*	2								
23	V211-661-003-50	BOLT/SP	*	6								
24	V211-661-004-00	BOLT/SP	*	1								
25	1683-201-053-10	PLATE/COVER	*	1								
26	1421-433-004-00	PIN,KNOCK	*	2								
27	V211-660-802-00	BOLT/8X20	*	2								
28	1427-201-012-00	METAL,DIFF-CASE LH	*	1								
29	1427-201-013-00	METAL,DIFF-CASE RH	*	1								
30	1427-201-014-00	SHIM,DIFF-CASE A	*	8								

FIG. 30 PTO GEAR SYSTEM (H TYPE)



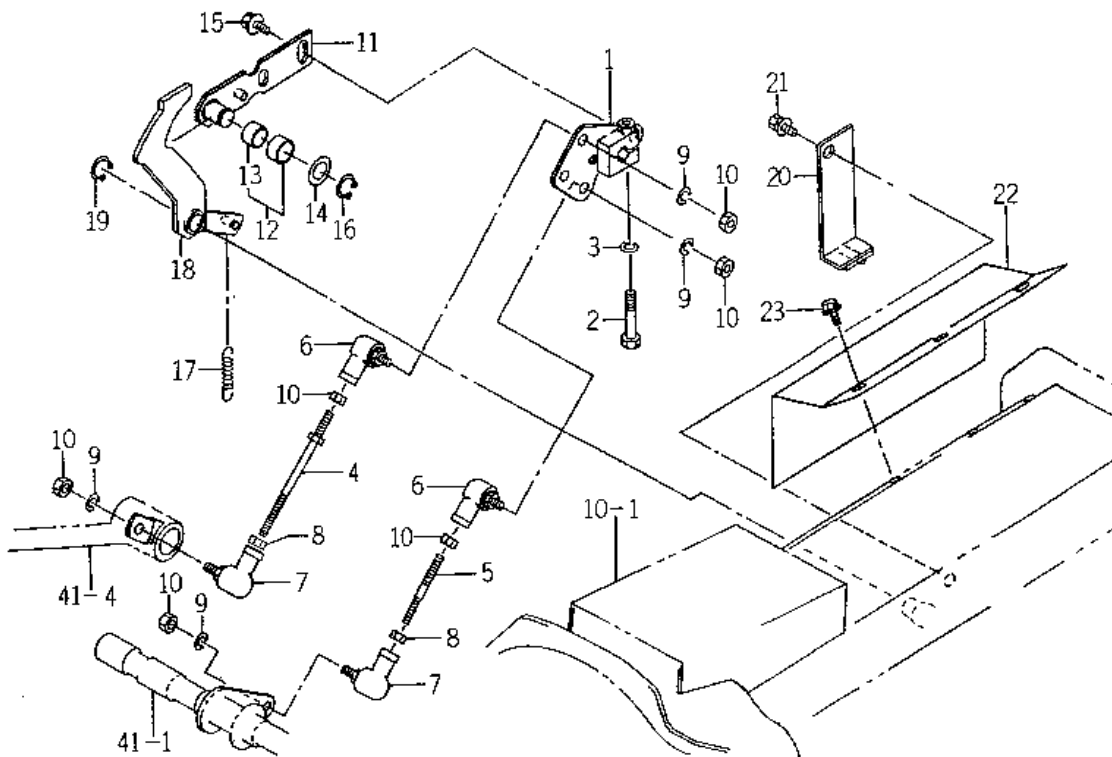
KEY	Part Code	Description	S P C	Type of Model					I T C	C O L	G R P	Remarks
				TM223								
1	1685-211-500-00	CLUTCH/PTO/3 ASSY	*	1							105	
1A	1685-211-500-10	CLUTCH/PTO/3 ASSY	*	1					1		105	
2	1688-211-058-00	BUSH/22X25X15	*	1								
3	1688-211-510-20	SHAFT/PTO COMP	*	1								
4	1688-211-057-00	RING/22	*	2								
5	1688-211-051-10	GEAR/SPUR/33	*	1								
6	1480-207-012-00	COLLAR 23X34X2	*	1								
7	1544-322-002-00	WASHER/30X40X2	*	1								
8	V704-140-030-00	RING,SNAP/30 C	*	1								
9	1688-211-053-00	COUPLING/37X50X35	*	1								
10	1688-211-052-00	GEAR/SPUR/18	*	1								
11	1682-255-002-20	BEARING/NEEDLE	*	1								
12	3656-107-004-00	WASHER/21X38X02	*	1								
13	V704-140-020-00	RING,SNAP/20C	*	1								
14	1650-203-008-00	RING/30	*	3								
15	V600-110-620-40	BEARING,RB/6204	*	1								
16	V600-110-620-60	BEARING,RB/6206	*	1								
17	1544-322-002-00	WASHER/30X40X2	*	1								
18	V704-140-030-00	RING,SNAP/30 C	*	1								
19	V707-140-062-00	RING/SNAP	*	1								
20	1688-211-054-00	GEAR/SPUR/31-20	*	1								
21	V654-425-322-40	BEARING KT253224	*	2								
22	1435-203-001-00	COLLAR/25X46X3	*	1								
23	1415-205-013-00	COLLAR/25X42X4	*	1								
24	V704-140-025-00	RING,SNAP/25 C	*	1								
25	1688-211-055-00	GEAR/SPUR/30	*	1								
25A	1688-211-055-10	GEAR/SPUR/30	*	1					3			
26	1688-211-056-20	SHAFT/DRIVE/PTO	*	1								
27	1688-211-059-00	HUB/CLUTCH	*	1								
27A	1688-211-310-00	HUB/CLUTCH COMP	*	1								

FIG. 36 MID PTO SYSTEM (M TYPE)



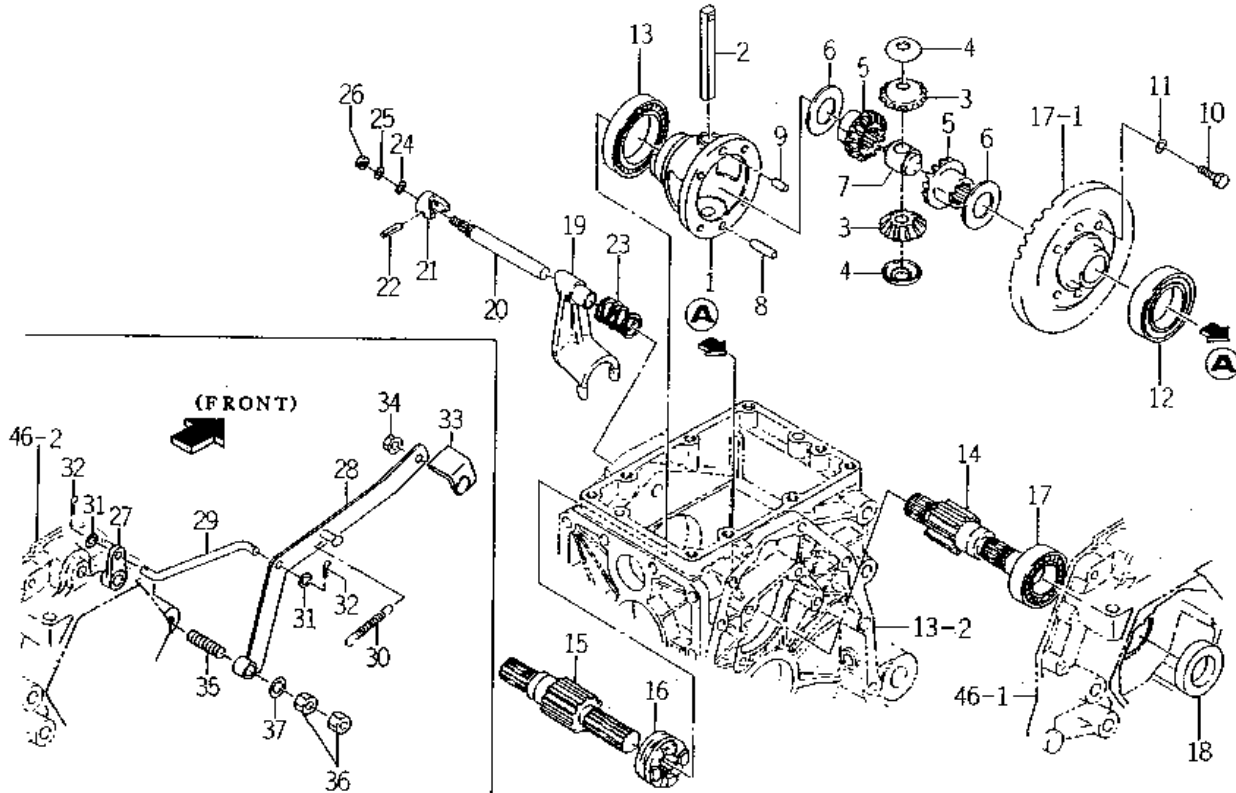
KEY	Part Code	Description	S P C	Type of Model					I T C	C O L	G R P	Remarks
				TM223								
1	1682-255-201-10	CASE/PTO/MID	*	1								
2	V523-101-002-40	PIN	*	2								
3	V201-361-009-00	BOLT/M10X90	*	6								
4	V401-160-010-00	WASHER,SP/M10	*	6								
5	1682-255-203-00	PIN/20X51	*	1								
6	1682-255-202-00	GEAR/SPUR/34	*	1								
7	1682-255-002-20	BEARING/NEEDLE	*	1				1				
8	1480-212-003-00	COLLAR/21X36X1	*	2								
9	V580-140-604-00	PIN,SPRING/6 X40 W	*	1								
10	1682-255-204-00	SHAFT/PTO/MID	*	1								
11	1682-255-205-10	GEAR/SPUR/15	*	1								
12	1302-225-003-00	SPRING,SHIFTER	*	1								
13	V682-200-001-00	BALL	*	1								
14	V704-140-025-00	RING,SNAP/25 C	*	1								
15	V600-110-630-40	BEARING,RB/6304	*	1								
16	V600-110-620-50	BEARING,RB/6205	*	1								
17	V705-140-052-00	RING,SNAP/52 C	*	2								
18	1427-212-003-20	SLEEVE	*	1								
19	V744-135-520-80	SEAL,OIL/TC35528	*	1								
20	3625-701-003-00	CAP,BLANK/52	*	1								
21	1682-255-210-40	ARM/SHIFT/MID COMP	*	1								
22	2703-101-020-00	COLLAR,SHIFTER	*	1								
23	V720-102-401-40	O-RING/P14	*	2								
24	1620-255-208-00	PLATE/I/30X50	*	1								
25	V211-360-801-60	BOLT,SEMS (SP)	*	1								
26	V203-261-202-00	BOLT/M12X20	*	1								
27	V781-160-000-6B	PLUG/SCREW/SEAL	*	1								
28	1444-314-009-10	CAP,PTO SHAFT	*	1								
29	V210-360-602-00	BOLT/SP	*	1								

FIG. 40 LINK SYSTEM (H TYPE)



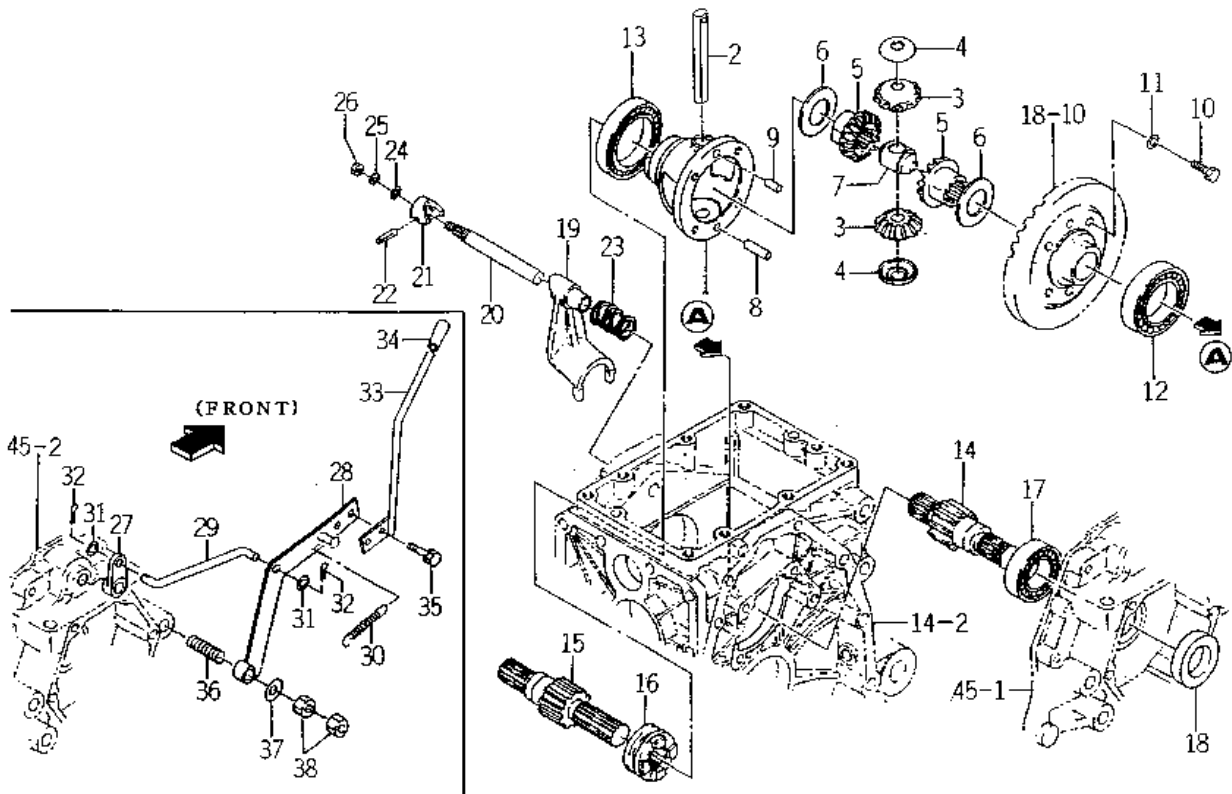
KEY	Part Code	Description	S P C	Type of Model					I T C	C O L	G R P	Remarks
				TM223								
1	1688-271-510-00	PIVOT/TRUNNION COMP	*	1								
2	V201-360-804-50	BOLT/M8X45/7T	*	1								
3	V401-160-008-00	WASHER,SP/M 8	*	1								
4	1685-271-510-00	ROD/M08X125 COMP	*	1								
5	1602-242-551-10	ROD/65	*	1								
6	1560-695-021-00	JOINT BALL M08RH	*	2								
7	1560-695-022-00	JOINT BALL M08LH	*	2								
8	1560-132-007-30	NUT/M8	*	2								
9	V401-160-008-00	WASHER,SP/M 8	*	4								
10	V304-260-008-00	NUT/M 8	*	6								
11	1683-271-500-30	ARM/NEUTRAL COMP	*	1								
12	1683-271-520-10	COLLAR/17X21X11 ASSY	*	1								
13	3643-420-004-00	BUSH/15X17X10	*	1								
14	3747-342-002-00	WASHER	*	1								
15	V211-360-801-60	BOLT,SEMS (SP)	*	2								
16	V704-140-015-00	RING,SNAP/15 C	*	1								
17	1105-410-003-00	SPRING/HE067	*	1								
18	1688-271-580-00	ARM COMP	*	1								
19	V704-140-015-00	RING,SNAP/15 C	*	1								
20	1688-271-590-10	PLATE COMP	*	1								
21	V211-361-002-50	BOLT/SP	*	1								
22	1685-271-051-00	COVER/TRUNNION	*	1								
23	V210-360-601-60	BOLT(SP)/M6X16	*	3								

FIG. 43 DIFF SYSTEM (EXCEPT H TYPE)



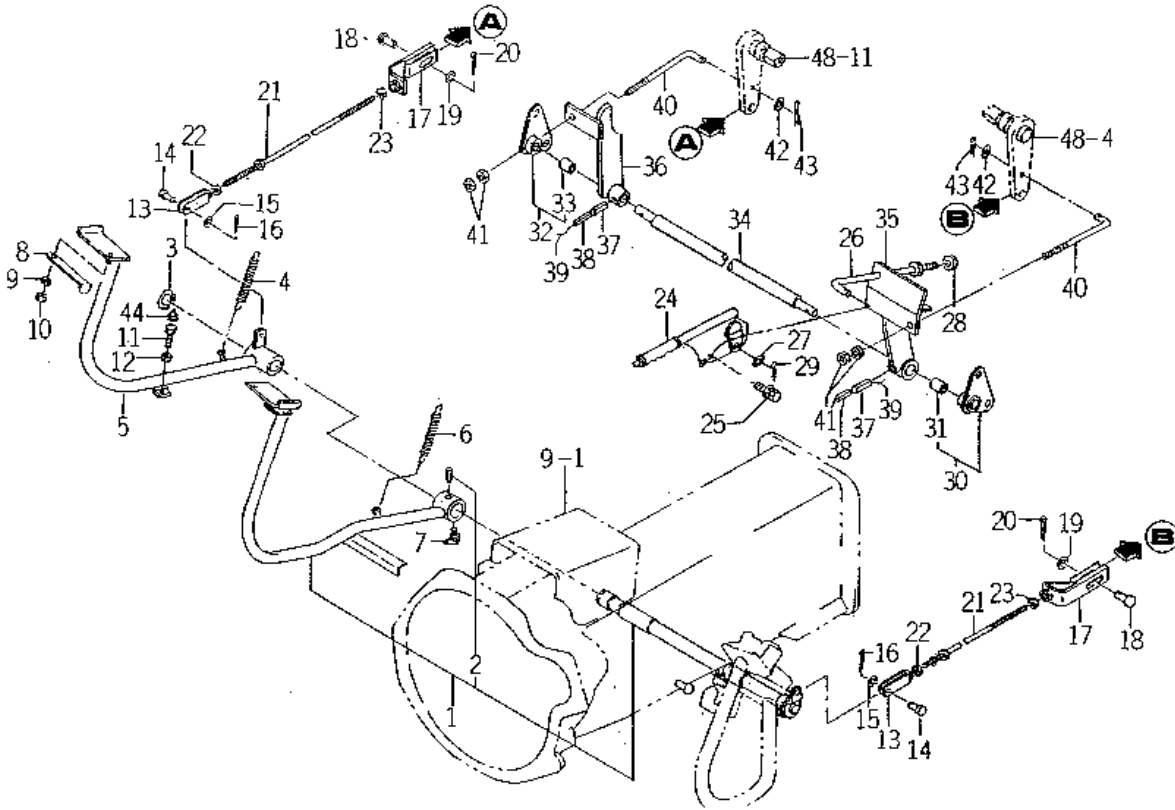
KEY	Part Code	Description	S P C	Type of Model					I T C	C O L	G R P	Remarks
				TM223								
1	1427-301-002-20	CASE,DIFF	*	1								
2	1444-411-006-00	SHAFT,DIFF. PINION	*	1								
3	1672-301-003-00	PINION/BEVEL/12	*	2								
4	1427-301-005-00	COLLAR,PINION THRUST	*	2								
5	1672-301-004-00	GEAR/BEVEL/14	*	2								
6	1427-301-007-00	COLLAR,THRUST	*	2								
7	1427-301-009-00	HOLDER,PINION SHAFT	*	1								
8	1672-301-002-00	PIN	*	1								
9	V522-100-801-60	PIN	*	1								
10	1544-304-006-10	BOLT/M8X25	*	4								
11	V401-160-008-00	WASHER,SP/M 8	*	4								
12	1600-301-004-00	BEARING/BALL	*	1								
13	V600-110-601-00	BEARING,RB/6010	*	1								
14	1684-301-001-00	GEAR/SPUR/11/LH	*	1								
15	1684-301-002-00	GEAR/SPUR/11/RH	*	1								
16	1427-301-013-20	CLUTCH/DIFFLOCK	*	1								
17	V600-110-620-60	BEARING,RB/6206	*	2								
18	V744-130-450-80	SEAL,OIL/TC30458	*	2								
19	1427-301-014-10	FORK/SHIFT/DIFFLOCK	*	1								
20	1427-301-015-00	STAY,SHIFTER	*	1								
21	1427-301-016-00	CAM,DIFF-LOCK	*	1								
22	V530-240-502-40	PIN/SLITTED	*	1								
23	1427-301-018-00	SPRING,PRESS/40	*	1								
24	V720-102-401-00	O-RING/P10A	*	1								
25	V401-160-010-00	WASHER,SP/M10	*	1								
26	V304-260-010-00	NUT	*	1								
27	1427-301-019-00	ARM/DIFFLOCK	*	1								
28	1682-301-200-00	PEDAL/DIFFROCK COMP	*	1								
29	1672-301-001-00	ROD/130	*	1								
30	1427-301-021-00	SPRING,TENSION/121	*	1								

FIG. 44 DIFF SYSTEM (H TYPE)



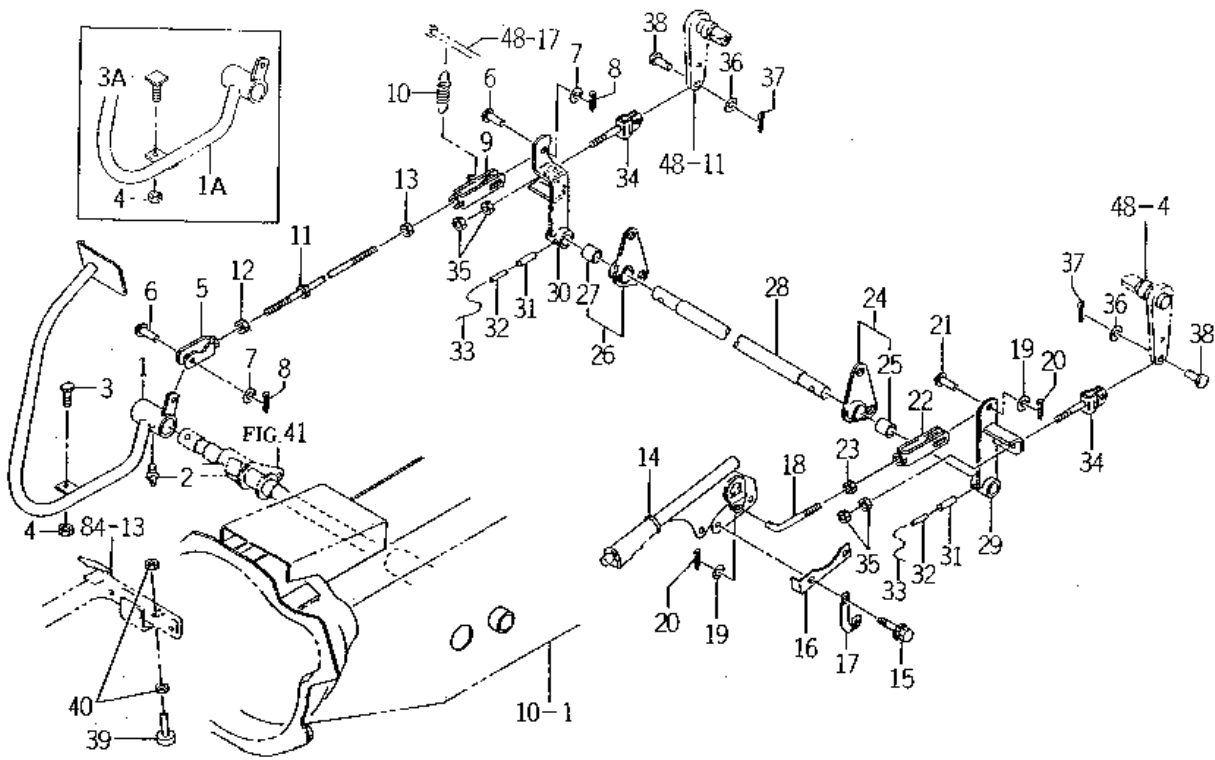
KEY	Part Code	Description	S P C	Type of Model					I T C	C O L	G R P	Remarks
				TM223								
1	1427-301-002-20	CASE,DIFF	*	1								
2	1444-411-006-00	SHAFT,DIFF. PINION	*	1								
3	1672-301-003-00	PINION/BEVEL/12	*	2								
4	1427-301-005-00	COLLAR,PINION THRUST	*	2								
5	1672-301-004-00	GEAR/BEVEL/14	*	2								
6	1427-301-007-00	COLLAR,THRUST	*	2								
7	1427-301-009-00	HOLDER,PINION SHAFT	*	1								
8	1672-301-002-00	PIN	*	1								
9	V522-100-801-60	PIN	*	1								
10	1544-304-006-10	BOLT/M8X25	*	4								
11	V401-160-008-00	WASHER,SP/M 8	*	4								
12	V600-110-600-90	BEARING,RB/6009	*	1								
13	V600-110-601-00	BEARING,RB/6010	*	1								
14	1427-301-011-10	PINION,WHEEL/11.L	*	1								
15	1427-301-012-10	PINION,WHEEL/11.R	*	1								
16	1427-301-013-10	CLUTCH,DIFF-LOCK	*	1								
17	V600-110-620-60	BEARING,RB/6206	*	2								
18	V744-130-450-80	SEAL,OIL/TC30458	*	2								
19	1427-301-014-10	FORK/SHIFT/DIFFLOCK	*	1								
20	1427-301-015-00	STAY,SHIFTER	*	1								
21	1427-301-016-00	CAM,DIFF-LOCK	*	1								
22	V530-240-502-40	PIN/SLITTED	*	1								
23	1427-301-018-00	SPRING,PRESS/40	*	1								
24	V720-102-401-00	O-RING/P10A	*	1								
25	V401-160-010-00	WASHER,SP/M10	*	1								
26	V304-260-010-00	NUT	*	1								
27	1427-301-019-00	ARM/DIFFLOCK	*	1								
28	1683-301-500-00	ARM/DIFFROCK COMP	*	1								
29	1672-301-001-00	ROD/130	*	1								
30	1427-301-021-00	SPRING,TENSION/121	*	1								

FIG. 49 BRAKE SYSTEM (2) (EXCEPT H,E1 TYPE)



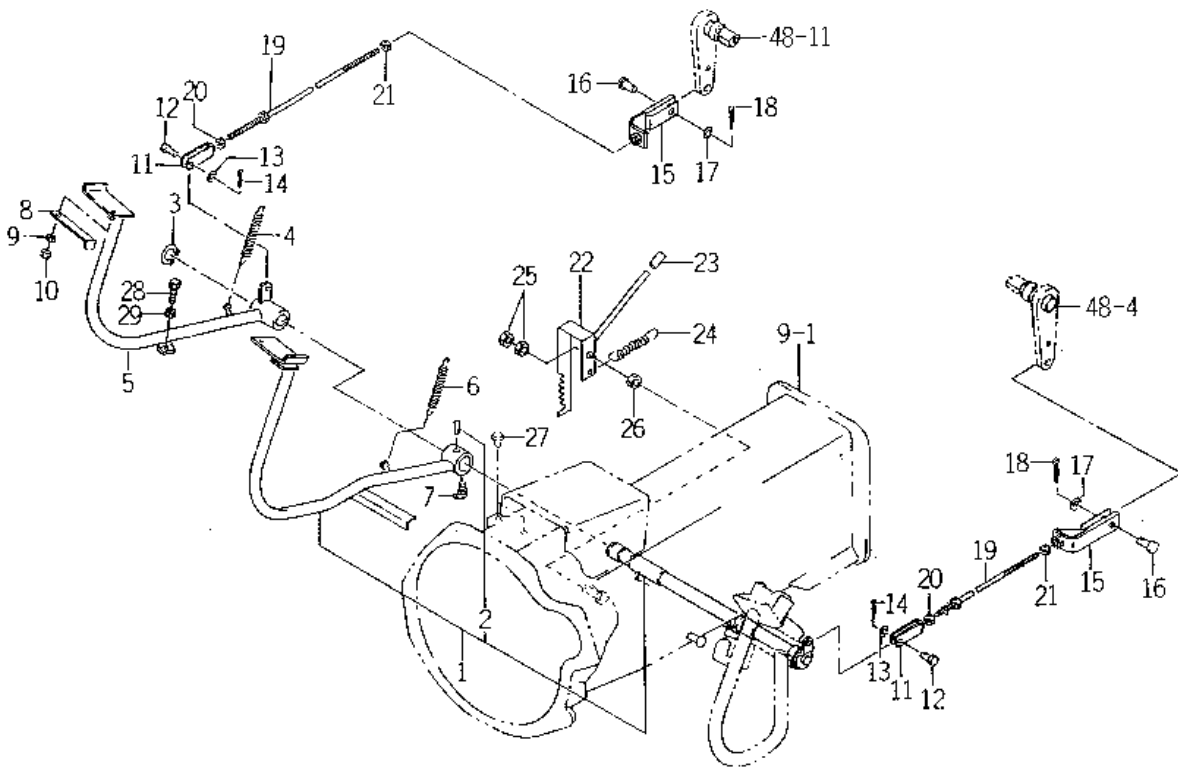
KEY	Part Code	Description	S P C	Type of Model					I T C	C O L	G R P	Remarks
				TM223								
1	1684-312-300-10	PEDAL/BRAKE/LH SET	*	1								
2	V511-100-805-00	PIN,TAPER/8X50	*	1								
3	V704-140-022-00	RING,SNAP/22 C	*	1								
4	1105-106-001-00	SPRING/HC094	*	1								
5	1682-312-240-20	PEDAL/BRAKE/RH COMP	*	1								
6	1105-106-001-00	SPRING/HC094	*	1								
7	V763-150-000-00	NIPPLE,GREASE/PT1/8	*	1								
8	1684-312-001-00	PLATE/LOCK	*	1								
9	V304-260-008-00	NUT/M 8	*	1								
10	P120-605-031-00	U-NUT	*	1								
11	1672-122-003-00	BOLT/TRIMED	*	1								
12	V304-260-008-00	NUT/M 8	*	1								
13	1415-312-500-00	YOKE,LH	*	2								
14	1404-312-006-00	PIN,YOKE A	*	2								
15	V411-260-008-00	WASHER,PL/M 8	*	2								
16	V500-162-002-00	PIN,SPLIT/2 X20	*	2								
17	1684-312-260-10	YOKE COMP	*	2								
18	1404-312-006-00	PIN,YOKE A	*	2								
19	V411-260-008-00	WASHER,PL/M 8	*	2								
20	V500-163-002-00	PIN,SPLIT/3 X20	*	2								
21	1684-312-230-00	ROD/BRAKE COMP	*	2								
22	1560-132-007-30	NUT/M8	*	2								
23	V304-260-008-00	NUT/M 8	*	2								
24	1682-312-260-00	LEVER/PARKING COMP	*	1								
25	V211-360-802-50	BOLT,SEMS	*	2								
26	1682-312-005-10	ROD/150	*	1								
27	V411-260-008-00	WASHER,PL/M 8	*	1								
28	V304-260-008-00	NUT/M 8	*	1								
29	V500-162-502-00	PIN,SPLIT/2.5X20	*	1								
30	1682-312-300-00	HOLDER/SHAFT/LH ASSY	*	1								

FIG. 50 BRAKE SYSTEM (2) (H TYPE)



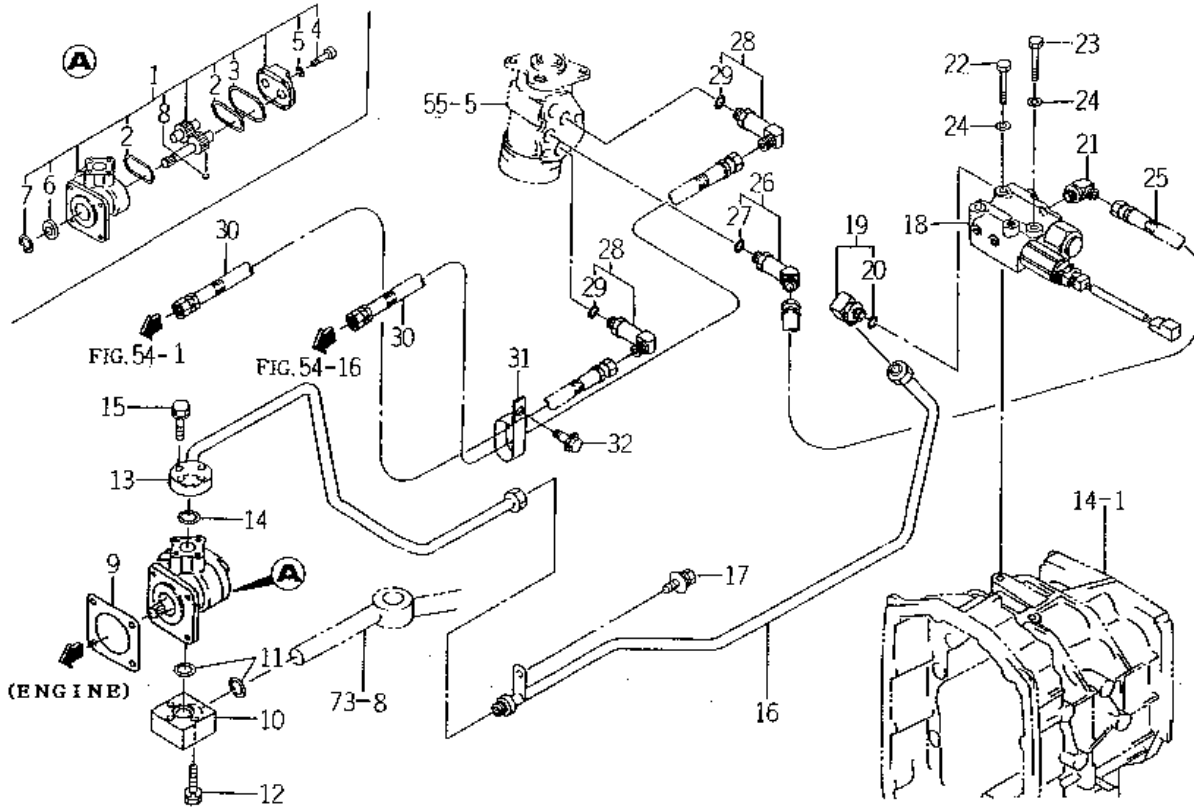
KEY	Part Code	Description	S P C	Type of Model					I T C	C O L	G R P	Remarks
				TM223								
1	1688-312-510-20	PEDAL/BRAKE COMP	*	1								
1A	1688-312-510-30	PEDAL/BRAKE COMP	*	1					1			
2	V763-150-000-00	NIPPLE,GREASE/PT1/8	*	1								
3	1688-312-001-00	BOLT/ADJUST	*	1								
3A	1688-312-260-00	BOLT/ADJUST COMP	*	1								
4	V304-260-008-00	NUT/M 8	*	1								
5	1415-312-500-00	YOKE,LH	*	1								
6	1404-312-006-00	PIN,YOKE A	*	2								
7	V411-260-008-00	WASHER,PL/M 8	*	2								
8	V500-162-002-00	PIN,SPLIT/2 X20	*	2								
9	1683-312-580-00	FORK/BRAKE COMP	*	1								
10	1560-404-002-30	SPRING	*	1								
11	1683-312-570-00	ROD/BRAKE COMP	*	1								
12	1560-132-007-30	NUT/M8	*	1								
13	V304-260-008-00	NUT/M 8	*	1								
14	1682-312-260-00	LEVER/PARKING COMP	*	1								
15	V211-360-802-50	BOLT,SEMS	*	2								
16	1683-312-002-00	STOPPER/PARKING	*	1								
17	1425-621-004-00	CLAMP,HARNESS	*	1								
18	1683-312-003-00	ROD/80	*	1								
19	V411-260-008-00	WASHER,PL/M 8	*	2								
20	V500-162-002-00	PIN,SPLIT/2 X20	*	2								
21	1404-312-006-00	PIN,YOKE A	*	1								
22	1510-328-260-00	YOKE COMP	*	1								
23	V304-260-008-00	NUT/M 8	*	1								
24	1682-312-300-00	HOLDER/SHAFT/LH ASSY	*	1								
25	3668-612-001-00	BUSH	*	1								
26	1682-312-310-00	HOLDER/SHAFT/RH ASSY	*	1								
27	3668-612-001-00	BUSH	*	1								
28	1682-312-004-10	SHAFT/PARKING	*	1								

FIG. 51 BRAKE SYSTEM (2) (E1 TYPE)



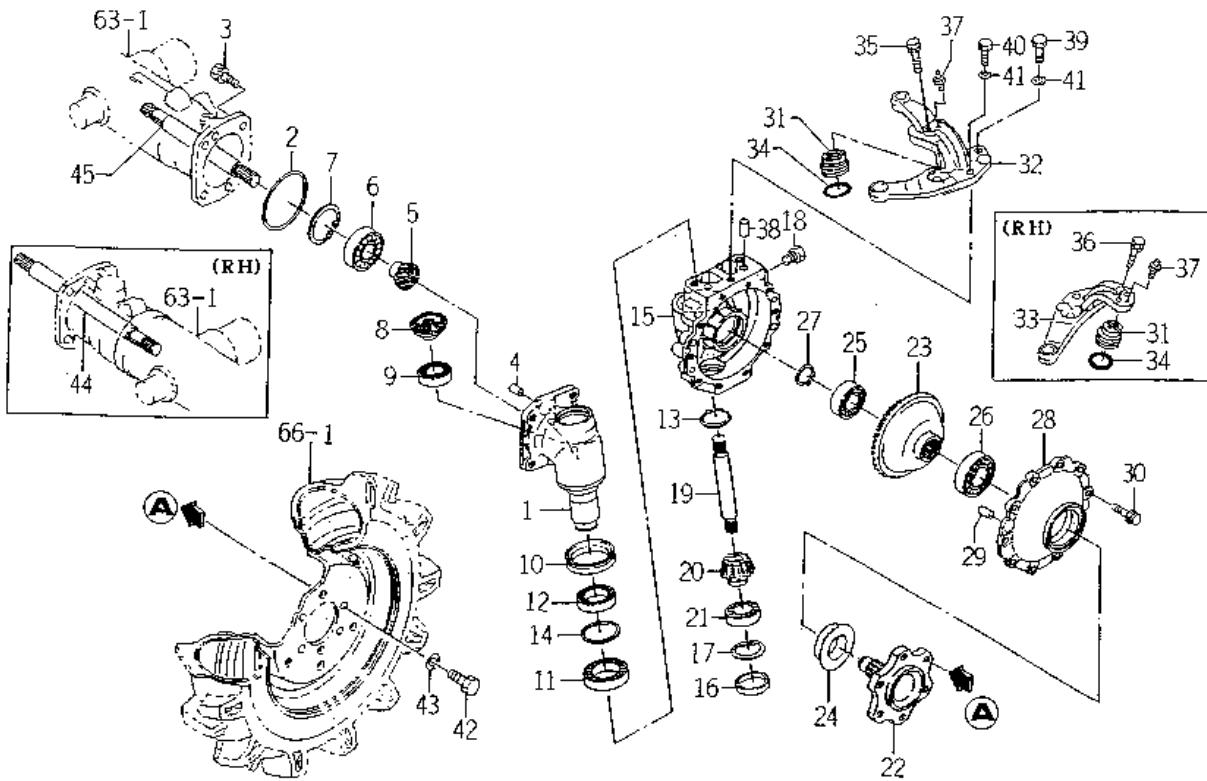
KEY	Part Code	Description	S P C	Type of Model					I T C	C O L	G R P	Remarks
				TM223								
1	1684-312-300-10	PEDAL/BRAKE/LH SET	*	1 88-								
2	V511-100-805-00	PIN, TAPER/8X50	*	1 88-								
3	V704-140-022-00	RING, SNAP/22 C	*	1 88-								
4	1105-106-001-00	SPRING/HC094	*	1 88-								
5	1682-312-240-20	PEDAL/BRAKE/RH COMP	*	1 88-								
6	1105-106-001-00	SPRING/HC094	*	1 88-								
7	V763-150-000-00	NIPPLE, GREASE/PT1/8	*	1 88-								
8	1675-312-051-00	LOCKPLATE										
9	V304-260-008-00	NUT/M 8	*	1 88-								
10	P120-605-031-00	U-NUT	*	1 88-								
11	1415-312-500-00	YOKE, LH	*	2 88-								
12	1404-312-006-00	PIN, YOKE A	*	2 88-								
13	V411-260-008-00	WASHER, PL/M 8	*	2 88-								
14	V500-162-002-00	PIN, SPLIT/2 X20	*	2 88-								
15	1684-312-280-10	YORK COMP	*	2 88-								
16	1404-312-006-00	PIN, YOKE A	*	2 88-								
17	V411-260-008-00	WASHER, PL/M 8	*	2 88-								
18	V500-163-002-00	PIN, SPLIT/3 X20	*	2 88-								
19	1684-312-230-00	ROD/BRAKE COMP	*	2 88-								
20	1560-132-007-30	NUT/M8	*	2 88-								
21	V304-260-008-00	NUT/M 8	*	2 88-								
22	1682-312-340-10	ARM/PARKING COMP	*	1 88-								
23	1672-312-001-00	TUBE/10X13X30	*	1 88-								
24	3631-671-003-00	SPRING, ROD COVER	*	1 88-								
25	V304-260-010-00	NUT	*	2 88-								
26	V305-260-012-00	NUT/M12	*	1 88-								
27	1432-616-002-00	RUBBER, CUSHION	*	2 88-								
28	1672-122-003-00	BOLT/TRIMED	*	1 88-								
29	V304-260-008-00	NUT	*	1 88-								

FIG. 57 PIPING SYSTEM (H TYPE)



KEY	Part Code	Description	S P C	Type of Model					I T C	C O L	G R P	Remarks
				TM223								
1	1685-408-200-00	PUMP/GEAR/R ASSY	*	1								
2	1672-508-262-00	GASKET	*	2								
3	1672-508-263-00	GASKET	*	1								
4	V220-540-802-50	SCREW/SOCKET	*	4								
5	1672-508-264-00	WASHER	*	4								
6	V744-114-280-70	SEAL,OIL	*	1								
7	V705-140-028-00	RING,SNAP/28 C	*	1								
8	V682-200-001-00	BALL	*	2								
9	1404-503-006-00	PACKING,OIL PUMP	*	1								
10	1685-408-002-00	FLANGE/SUC	*	1								
11	V720-112-402-00	O-RING/P20	*	2								
12	V210-260-604-50	BOLT,SEMS/M64X45	*	3								
13	1685-408-210-00	PIPE/VALVE/F COMP	*	1								
14	V720-112-402-00	O-RING/P20	*	1								
15	V210-260-603-00	BOLT(S) M6X30	*	4								
16	1685-408-220-10	PIPE/VALVE/R COMP	*	1				1				
17	V211-360-801-60	BOLT,SEMS (SP)	*	1								
18	K200-053-000-00	VALVE ASSY	*	1							102	
19	1672-408-210-00	ADAPTER/L/PF1/4 ASSY	*	1								
20	V720-112-401-10	RING/O	*	1								
21	P117-202-015-00	ELBOW	*	1								
22	V201-260-806-00	BOLT/M 8X60	*	2								
23	V201-260-805-50	BOLT/M 8X55	*	1								
24	V401-160-008-00	WASHER,SP/M 8	*	3								
25	1683-273-570-10	HOSE/1350 ASSY	*	1								
26	P113-211-300-00	ELBOW/45 ASSY	*	1								
27	V720-112-401-10	RING/O	*	1								
28	P113-211-330-00	ELBOW/90/L ASSY	*	2								
29	V720-112-401-10	RING/O	*	2								
30	1682-408-220-00	HOSE/DERIVERY ASSY	*	2								

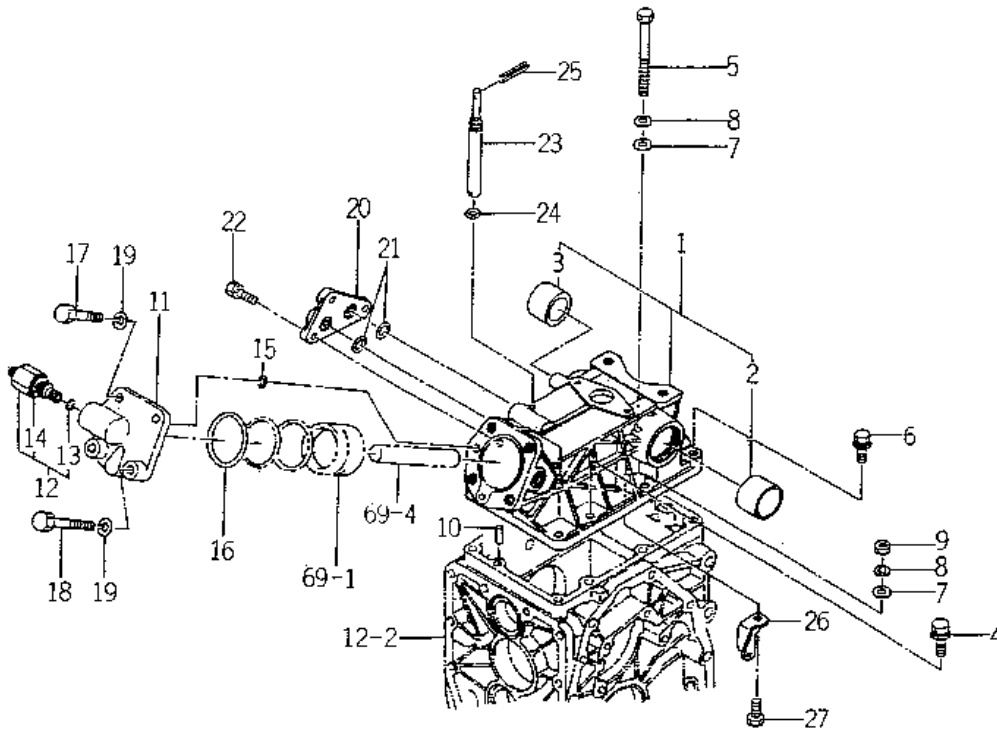
FIG. 64 FINAL GEAR, FINAL, DRIVE SHAFT SYSTEM



KEY	Part Code	Description	S P C	Type of Model					I T C	C O L	G R P	Remarks
				TM223								
1	1682-434-001-30	CASE/FINAL	*	2					3			
2	V721-103-109-00	O-RING/G90	*	2								
3	V211-561-003-00	BOLT/M10X30	*	8								
4	V523-101-002-40	PIN	*	4								
5	1672-434-002-00	GEAR/BEVEL/11	*	2								
6	V600-110-630-50	BEARING,RB/6305	*	2								
7	V707-140-062-00	RING/SNAP	*	2								
8	1672-434-003-00	GEAR/BEVEL/15	*	2								
9	V600-110-600-50	BEARING,RB/6005	*	2								
10	1488-413-023-10	SEAL,OIL	*	2								
11	V600-110-690-70	BEARING	*	2								
12	V600-110-600-80	BEARING,RB/6008	*	2								
13	V704-140-035-00	RING,SNAP/35 C	*	2								
14	V707-140-055-00	RING/SNAP	*	2								
15	1672-434-011-00	CASE/FINAL	*	2								
16	1564-201-003-00	CAP/SEAL/47	*	2								
17	V705-140-047-00	RING,SNAP/47 C	*	2								
18	7955-201-026-00	PLUG,DRAIN (1/4)	*	4								
19	1612-434-006-00	SHAFT	*	2								
20	1672-434-007-00	GEAR/BEVEL/12	*	2								
21	V600-110-600-50	BEARING,RB/6005	*	2								
22	1682-434-007-00	SHAFT/WHEEL	*	2								
23	1672-434-008-00	GEAR/BEVEL/47	*	2								
24	1491-434-017-00	SEAL/QLNY35571116	*	2								
25	V600-110-620-50	BEARING,RB/6205	*	2								
26	V600-110-620-60	BEARING,RB/6206	*	2								
27	V704-140-025-00	RING,SNAP/25 C	*	2								
28	1612-434-009-00	COVER/WHEEL	*	2								
29	V523-101-002-40	PIN	*	4								
30	V211-360-802-50	BOLT,SEMS	*	20								

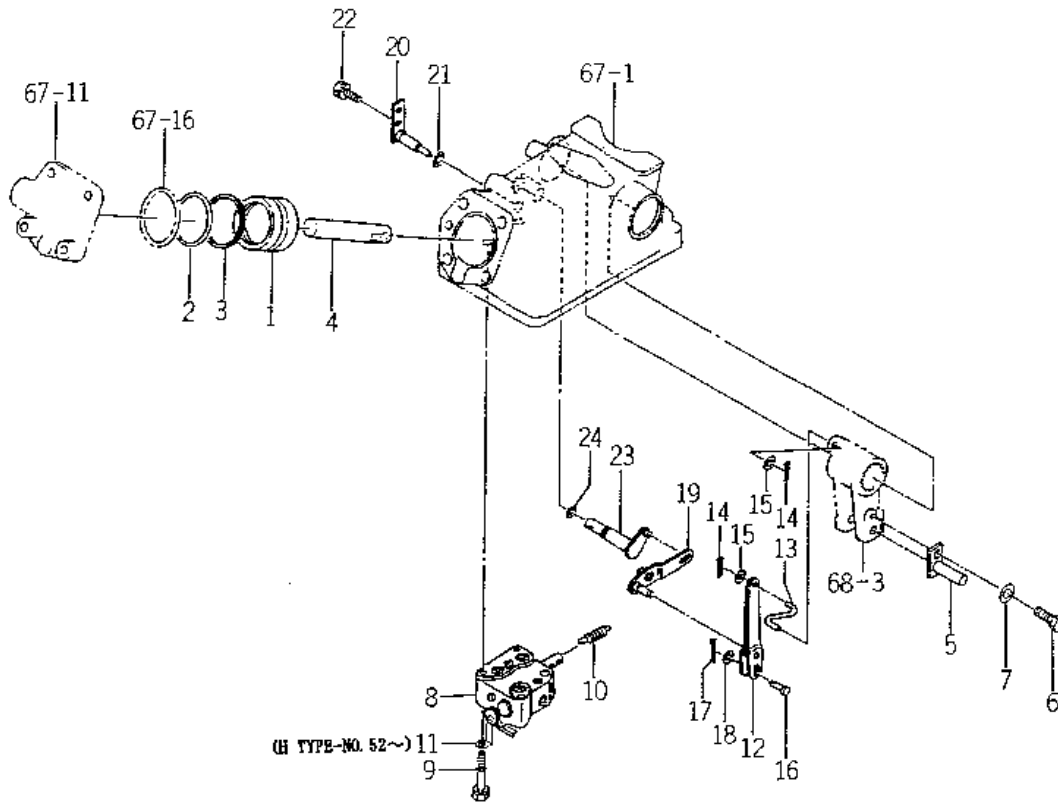
IBU

FIG. 67 CYLINDER CASE SYSTEM



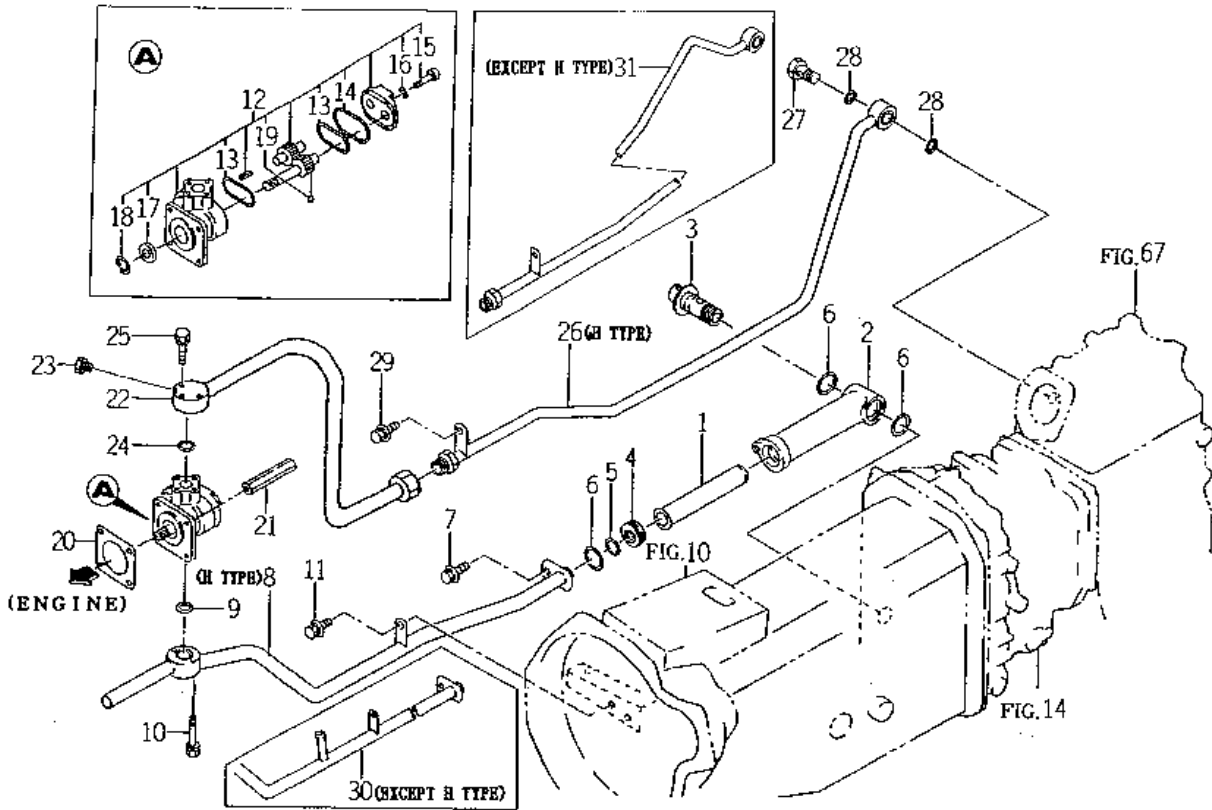
KEY	Part Code	Description	S P C	Type of Model						I T C	C O L	G R P	Remarks
				TM223									
1	1579-501-200-00	CASE,SYLINDER	*	1									
2	1480-501-003-00	BUSH/40X43X30	*	1									
3	1427-501-003-00	BUSH/35X39X30	*	1									
4	V211-661-004-00	BOLT/SP	*	4									
5	V201-361-010-00	BOLT/M10X100	*	1									
6	V211-661-004-50	BOLT/SP	*	2									
7	V411-260-010-00	WASHER/M10	*	3									
8	V401-160-010-00	WASHER,SP/M10	*	3									
9	V304-460-010-00	NUT/M10	*	2									
10	V522-100-801-80	PIN	*	2									
11	1579-501-002-00	HEAD,SYLINDER	*	1									
12	K250-001-000-00	VALVE,RELIEF ASSY	*	1									
13	V720-112-401-20	O-RING/P12	*	1									
14	K250-001-009-00	PACKING	*	1									
15	V720-112-401-20	O-RING/P12	*	2									
16	V721-113-106-00	O-RING G60	*	1									
17	V201-361-204-00	BOLT/M12X40	*	2									
18	V201-361-206-00	BOLT	*	2									
19	V401-160-012-00	WASHER,SP/M12	*	4									
20	1434-501-003-00	COVER,SUB CONTROL	*	1									
21	V720-112-401-20	O-RING/P12	*	2									
22	V211-260-802-50	BOLT/S	*	3									
23	1434-501-004-00	PIN,ADJ	*	1									
24	V720-101-900-70	O-RING/P 7	*	1									
25	V580-140-403-60	PIN,SPRING 3X32	*	1									
26	1434-501-005-00	HOOK,SPRING	*	1									
27	V201-260-801-60	BOLT/M 8X16	*	1									

FIG. 69 CYLINDER SYSTEM



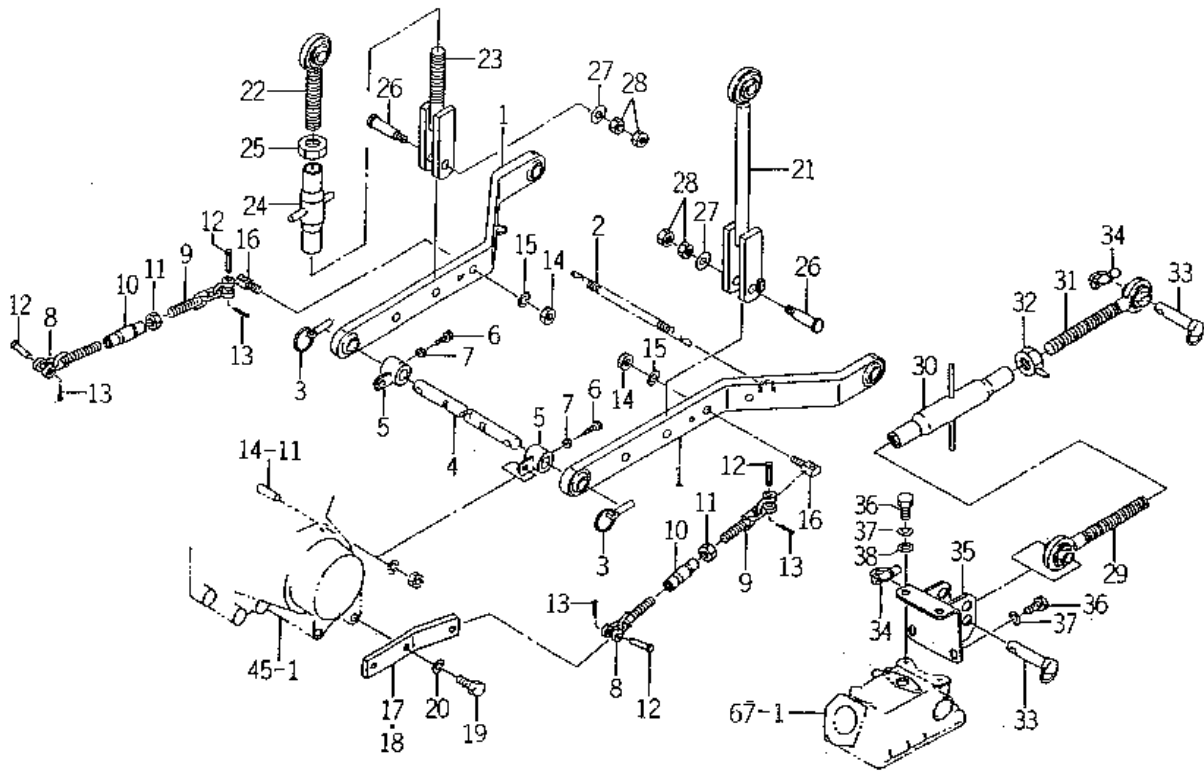
KEY	Part Code	Description	S P C	Type of Model					I T C	C O L	G R P	Remarks
				TM223								
1	1421-507-002-10	PISTON	*	1								
2	V720-105-705-50	O-RING/P55	*	1								
3	1416-501-011-00	RING,BACKUP	*	1								
4	1544-503-001-20	ROD	*	1								
5	1544-503-200-20	PIN,ROD COMP	*	1								
6	V211-561-001-60	BOLT(S)7	*	1								
7	V411-260-010-00	WASHER/M10	*	1								
8	K211-001-000-00	VALVE CONTROL ASSY	*	1						103		
9	V211-260-805-00	BOLT/M8X50	*	3								
10	1434-501-006-00	SPRING,TENSION/31	*	1								
11	1682-503-001-00	COVER/PLATE	*	1 52-								
12	1672-503-200-00	LINK/SPOOL COMP	*	1								
13	1434-503-001-00	LINK,CRANK	*	1								
14	V500-162-001-50	PIN,SPLIT/2 X15	*	2								
15	V411-260-006-00	WASHER / M6	*	2								
16	1434-503-002-00	PIN/5X17	*	1								
17	V500-162-001-50	PIN,SPLIT/2 X15	*	1								
18	V411-260-005-00	WASHER,PL/M 5	*	1								
19	1672-503-210-00	LINK/SUPPORT COMP	*	1								
20	1434-503-250-10	PIN/SUPPORT COMP	*	1								
21	V720-101-900-70	O-RING/P 7	*	1								
22	V211-260-801-60	BOLT,SEMS (S) M8X16	*	1								
23	1434-503-260-20	LINK SHIFT ARM	*	1								
24	V720-102-401-00	O-RING/P10A	*	1								

FIG. 73 PIPING SYSTEM



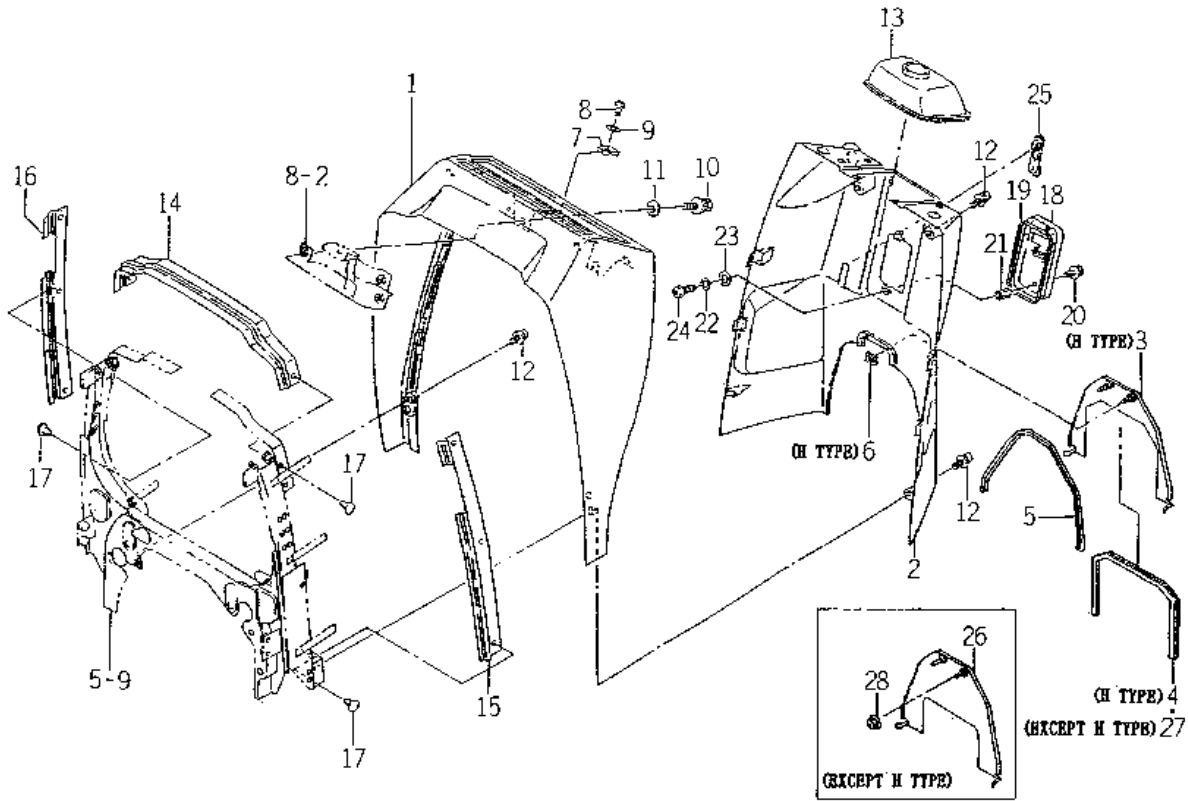
KEY	Part Code	Description	S P C	Type of Model					I T C	C O L	G R P	Remarks
				TM223								
1	1685-508-220-00	FILTER COMP	*	1								
2	1685-508-001-00	CASE/FILTER	*	1								
3	1434-503-330-00	BOLT,SET COMP	*	1								
4	1682-508-002-00	SPACER	*	1								
5	V720-102-402-10	O-RING/P21	*	1								
6	V720-103-502-80	O-RING/P28	*	3								
7	V211-360-801-60	BOLT,SEMS (SP)	*	1								
8	1685-508-200-00	PIPE/SUCTION COMP	*	1 -133								
9	V720-112-402-00	O-RING/P20	*	1								
10	V210-260-604-50	BOLT,SEMS/M64X45	*	2								
11	V211-360-801-60	BOLT,SEMS (SP)	*	1								
12	1672-508-270-10	PUMP/GEAR ASSY	*	1								
13	1672-508-262-00	GASKET	*	2								
14	1672-508-263-00	GASKET	*	1								
15	V220-540-802-50	SCREW/SOCKET	*	4								
16	1672-508-264-00	WASHER	*	4								
17	V744-114-280-70	SEAL,OIL	*	1								
18	V705-140-028-00	RING,SNAP/28 C	*	1								
19	V682-200-001-00	BALL	*	2								
20	1404-503-006-00	PACKING,OIL PUMP	*	1								
21	1560-515-004-40	NUT/M8	*	2								
22	1682-508-230-10	PIPE/DEL/F COMP	*	1					1			
23	1326-706-002-10	PLUG,DRAIN	*	1								
24	V720-112-402-00	O-RING/P20	*	1								
25	V210-260-603-00	BOLT(S) M6X30	*	4								
26	1685-508-210-10	PIPE/DERIVERY/R COMP	*	1					1			
27	1415-505-014-00	BOLT,CONNECTOR	*	1								
28	V720-112-401-80	O-RING/P18	*	2								
29	V211-360-801-60	BOLT,SEMS (SP)	*	1								
30	1684-508-200-00	PIPE/SUCTION COMP	*	1								

FIG. 74 3P LINK SYSTEM



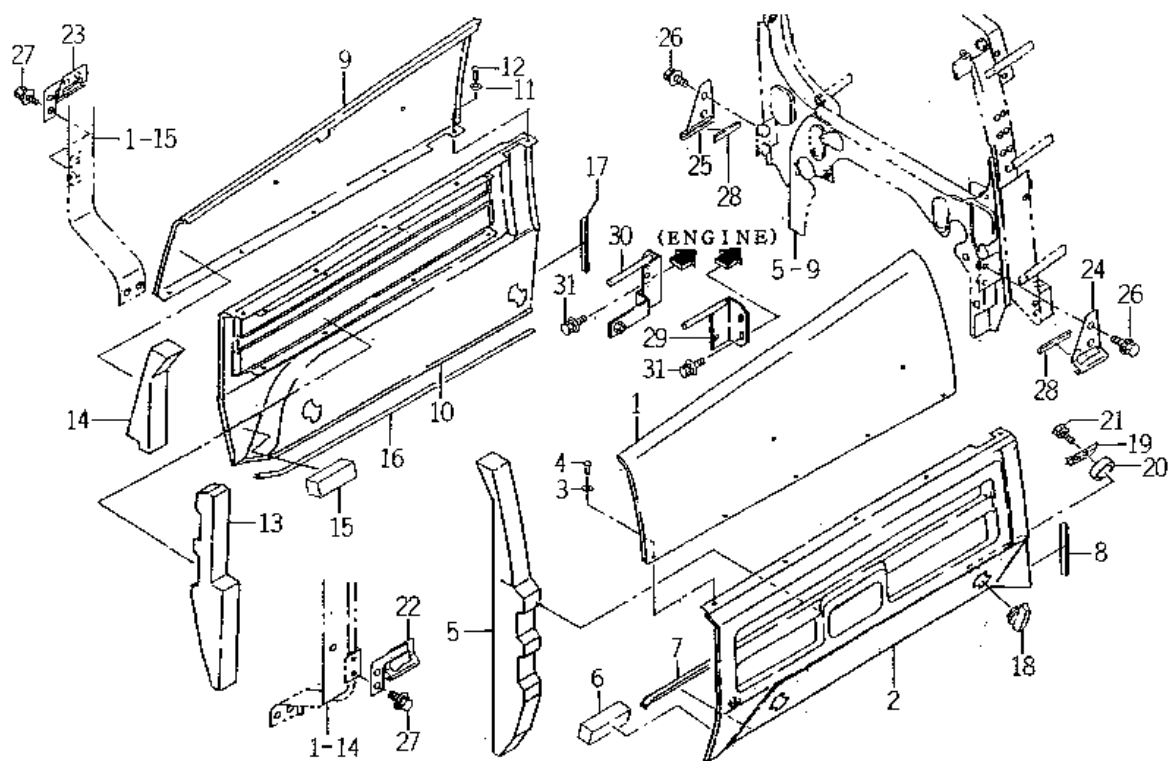
KEY	Part Code	Description	S P C	Type of Model					I T C	C O L	G R P	Remarks
				TM223								
1	1685-511-210-00	LINK/LOWER COMP	*	2								
2	1560-525-001-40	SPRING	*	1								
3	1421-502-002-00	PIN, LINK	*	2								
4	1600-514-001-00	PIN/22X384	*	1								
5	1435-511-260-00	HUB/22X40X37 COMP	*	2								
6	V201-360-802-50	BOLT/M 8X25	*	2								
7	V305-260-008-00	NUT/M 8	*	2								
8	7963-611-230-00	CHAIN, CHECK/A	*	2								
9	7963-611-240-00	CHAIN, CHECK, B COMP	*	2								
10	7963-611-002-00	TURNBUCKLE	*	2								
11	V304-260-016-00	NUT/M16	*	2								
12	7963-611-003-00	PIN/12X48	*	4								
13	V500-163-002-50	PIN, SPLIT/3 X25	*	4								
14	V304-260-016-00	NUT/M16	*	2								
15	V401-160-016-00	WASHER, SP/M16	*	2								
16	7963-611-001-00	PIN, CHAIN	*	2								
17	1600-514-002-00	PLATE, L/38X116/LH	*	1								
18	1600-514-003-00	PLATE, L/38X116/RH	*	1								
19	V201-361-203-00	BOLT/M12X30	*	4								
20	V401-160-012-00	WASHER, SP/M12	*	4								
21	1685-511-230-00	ROD/LIFT/LH COMP	*	1								
22	1600-515-210-10	SCREW, RH/M24 COMP	*	1								
23	1685-511-220-00	LIFTRD/L COMP	*	1								
24	1600-515-240-00	BUCKLE, TURN/M24 COMP	*	1								
25	V304-460-024-00	NUT	*	1								
26	1600-515-001-00	PIN/16X73	*	2								
27	1427-431-003-00	WASHER/13X32X3	*	2								
28	V304-460-012-00	NUT/M12	*	4								
29	1427-511-250-10	LINK, TOP LH COMP	*	1								
30	1550-514-290-00	TURNBUCKLE COMP	*	1								

FIG. 77 STEERING COVER SYSTEM



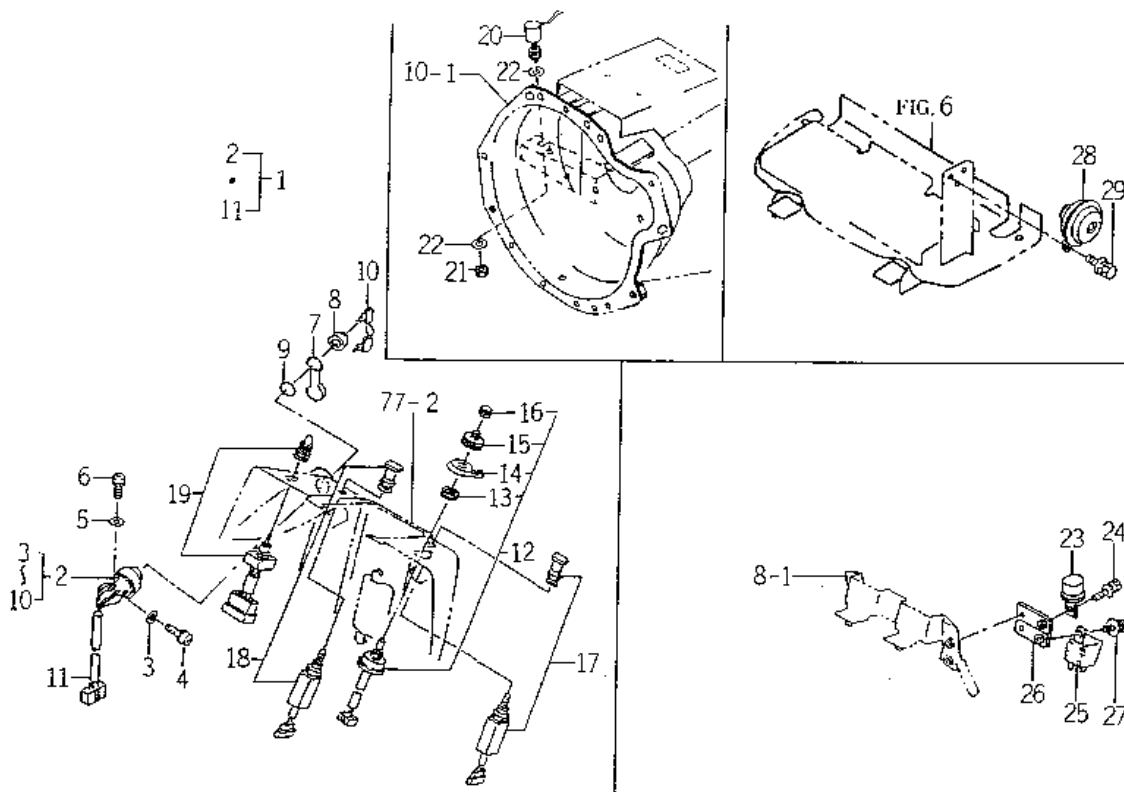
KEY	Part Code	Description	S P C	Type of Model						I T C	C O L	G R P	Remarks
				TM223									
1	1614-603-051-00	COVER/DUSH/F	*	1									
2	1614-603-052-00	COVER/DUSH/R	*	1									
3	1685-603-510-00	COVER/DUSH/REAR COMP	*	1									
4	1685-603-001-00	TRIM/470	*	1									
5	1682-603-006-00	TRIM/570	*	1									
6	V350-160-006-00	NUT,SPEED/P6	*	2									
7	1614-603-018-00	NUT/SPRING	*	2									
8	1560-401-004-40	BOLT/M5X16	*	2									
9	V411-260-006-00	WASHER / M6	*	2									
10	V211-360-801-60	BOLT,SEMS (SP)	*	2									
11	4101-102-038-00	WASHER/24X9X3.2	*	2									
12	V120-376-002-00	SCREW/SP	*	6									
13	1612-603-002-00	BOOT/STEERING	*	1									
14	1614-603-201-10	INSULATOR	*	1									
15	1685-603-002-10	INSULATOR/LH	*	1									
16	1685-603-003-20	INSULATOR/RH	*	1					1				
17	1527-604-002-00	CLIP(B)	*	8									
18	1672-603-200-00	BRACKET/FUSE COMP	*	1									
19	1672-603-005-00	TRIM/350	*	1									
20	V120-376-001-20	SCREW/SP	*	2									
21	1672-603-007-00	NUT/M6X15	*	2									
22	V401-160-006-00	WASHER,SP/M 6	*	2									
23	V411-260-006-00	WASHER / M6	*	2									
24	V111-166-001-20	SCREW/M6X12	*	2									
25	1612-603-005-00	CAP/PARKING	*	1									
26	1684-603-210-00	COVER/DUSH/REAR COMP	*	1									
27	1684-603-001-00	TRIM/405	*	1									
28	V360-260-006-00	NUT/M6	*	2									

FIG. 78 SIDE COVER SYSTEM



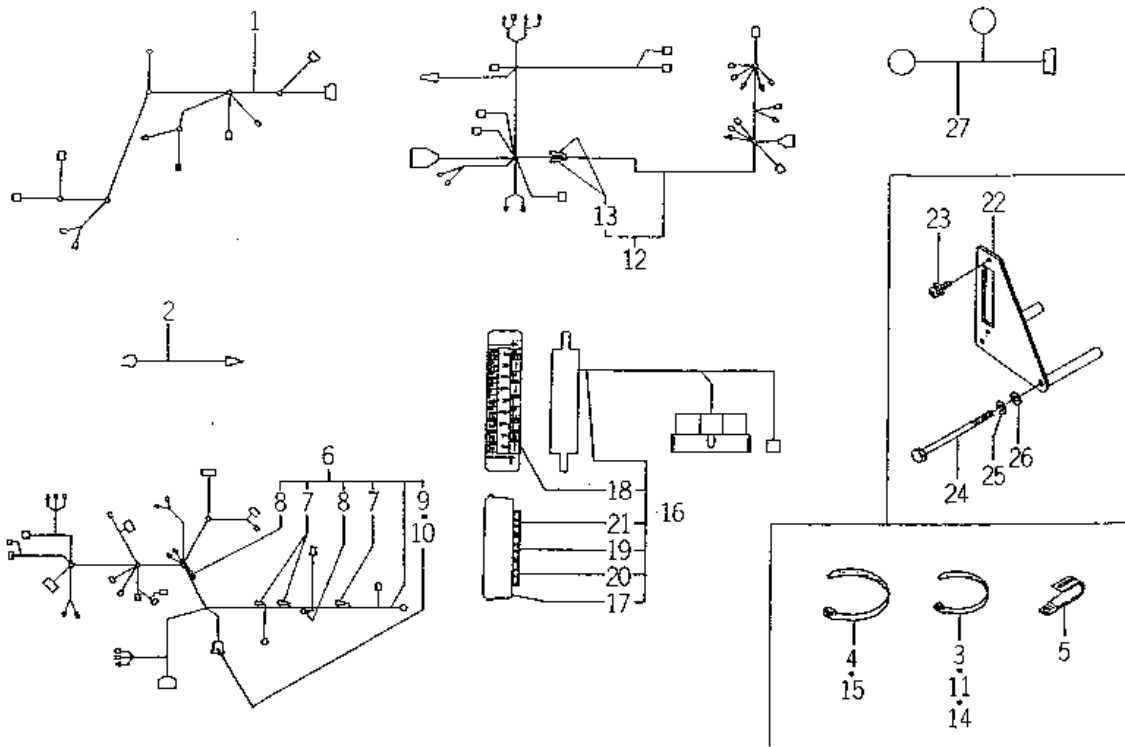
KEY	Part Code	Description	S P C	Type of Model					I T C	C O L	G R P	Remarks
				TM223								
1	1675-604-201-10	COVER/SIDE/LH	*	1						4G		
2	1685-604-001-10	COVER/UNDER/LH	*	1				1	8F			
3	1480-604-204-00	WASHER	*	5								
4	W296-134-007-00	RIVET,BLIND	*	5								
5	1672-604-006-00	INSULATOR/LH	*	1								
6	1682-604-007-10	INSULATOR/30X30X80	*	1								
7	1684-604-003-00	INSULATOR/645	*	1								
8	1685-604-003-00	INSULATOR/90	*	1								
9	1675-604-221-10	COVER/SIDE/RH	*	1						4G		
10	1685-604-002-10	COVER/UNDER/RH	*	1				1	8F			
11	1480-604-204-00	WASHER	*	5								
12	W296-134-007-00	RIVET,BLIND	*	5								
13	1672-604-007-00	INSULATOR/RH	*	1								
14	1672-604-008-00	INSULATOR/RH	*	1								
15	1682-604-007-10	INSULATOR/30X30X80	*	1								
16	1684-604-003-00	INSULATOR/645	*	1								
17	1685-604-003-00	INSULATOR/90	*	1								
18	3650-841-001-00	KNOB	*	4								
19	1637-604-009-00	SPRING/KNOB	*	4								
20	3650-841-003-00	COLLAR/31X38X10	*	4								
21	V210-260-601-20	BOLT,SEMS	*	4								
22	1685-604-220-00	PLATE/LOCK/LH COMP	*	1								
23	1685-604-230-00	PLATE/LOCK/RH COMP	*	1								
24	1675-604-003-00	PLATE/LOCK/LH	*	1								
25	1675-604-004-00	PLATE/LOCK/RH	*	1								
26	V211-360-801-60	BOLT,SEMS (SP)	*	4								
27	V362-260-008-00	NUT/WASHER	*	4								
28	1640-604-011-10	SEAL	*	4								
29	1685-604-240-00	STAY/COVER/LH COMP	*	1								
30	1685-604-210-00	STAY/COVER/RH COMP	*	1								

FIG. 90 SWITCH SYSTEM (1)



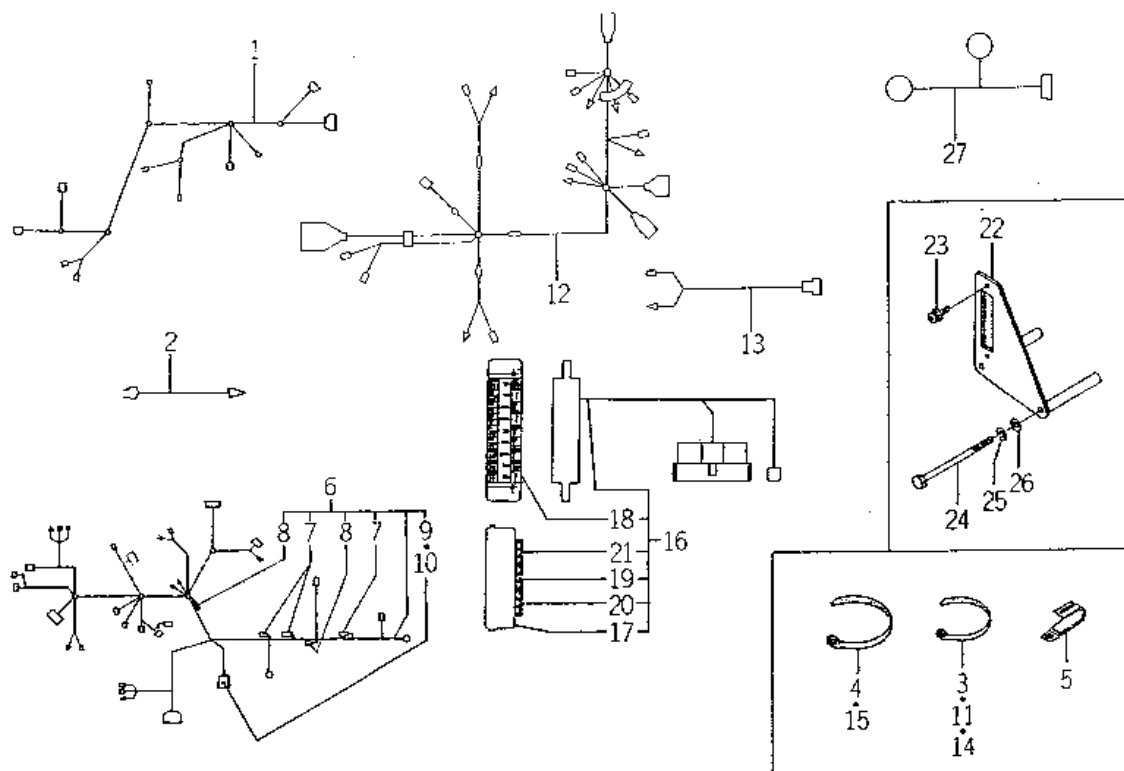
KEY	Part Code	Description	S P C	Type of Model						I T C	C O L	G R P	Remarks
				TM223									
1	1575-623-210-00	SWITCH,STARTER ASSY	*	1									
2	1488-621-220-10	SWITCH,STARTER SET	*	1									
3	V411-260-004-00	WASHER,PL/M4	*	3									
4	V120-264-000-80	SCREW,PLUS/M4X8	*	3									
5	V411-260-005-00	WASHER,PL/M 5	*	3									
6	V120-265-001-00	SCREW,PLUS/M5X0.8X8	*	3									
7	1444-621-311-00	CAP	*	1									
8	1444-621-312-00	NUT,RING/M28X1.0	*	1									
9	1444-621-313-00	WASHER	*	1									
10	1444-621-320-00	KEY ASSY	*	1									
11	1575-623-211-00	HARNESS/STARTER	*	1									
12	1544-623-001-00	SWITCH ASSY	*	1									
13	1544-623-232-00	NUT/M22	*	1									
14	1544-623-233-00	LEVER	*	1									
15	1544-623-234-00	KNOB	*	1									
16	1544-623-235-00	BOOT/HORN	*	1									
17	1600-623-200-00	SWITCH	*	1									
18	1600-623-210-00	SWITCH,LAMP ASSY	*	1									
19	1600-623-220-00	SWITCH,HAZARD ASSY	*	1									
20	1518-621-320-00	SWITCH,STOP	*	1									
21	V335-260-012-00	NUT	*	1									
22	2137-304-005-00	WASHER/13X24X01	*	2									
23	1600-623-002-00	FLASHER ASSY	*	1									
24	V210-360-601-60	BOLT(SP)/M6X16	*	1									
25	1581-621-290-00	RELAY/4P	*	1									
26	1682-690-350-00	STAY/RELAY COMP	*	1									
27	V210-360-601-60	BOLT(SP)/M6X16	*	1									
28	1674-664-200-00	HORN ASSY	*	1									
29	V211-360-801-60	BOLT,SEMS (SP)	*	1									

FIG. 92 HARNESS SYSTEM (H TYPE)



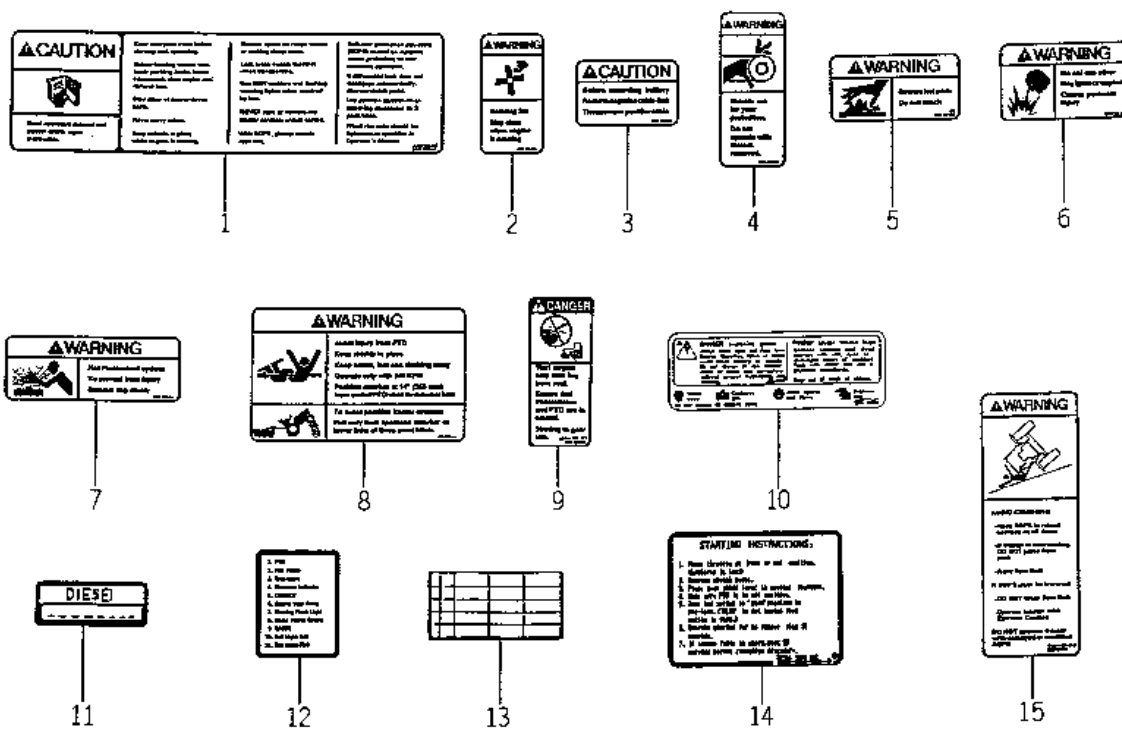
KEY	Part Code	Description	S P C	Type of Model						I T C	C O L	G R P	Remarks
				TM223									
1	1685-690-210-10	HARNESS/FRONT/E ASSY	*	1									
2	1600-624-004-00	HARNESS,OIL PRESSURE	*	1									
3	1376-402-003-00	BAND,WIRE/140	*	8									
4	1342-402-006-00	BAND,WIRE/250	*	2									
5	1425-621-004-00	CLAMP,HARNESS	*	1									
6	1685-690-220-00	HARNESS/MAIN/E4 ASSY	*	1									
7	1614-690-202-00	FUSE/SLOWBLOW	*	3									
8	1560-666-212-00	DIODE	*	2									
9	1560-664-264-00	FUSE,BLADE	*	4									
10	1593-623-503-00	CAP,FUSE BOX	*	1									
11	1376-402-003-00	BAND,WIRE/140	*	1									
12	1685-690-230-00	HARNESS/REAR/E4	*	1									
13	3659-270-221-00	DIODE/1.5A	*	2									
14	1376-402-003-00	BAND,WIRE/140	*	5									
15	1342-402-006-00	BAND,WIRE/250	*	1									
16	1688-690-340-10	HARNESS/FUSE ASSY	*	1									
17	1650-650-246-00	COVER/FUSE	*	1									
18	1650-652-253-20	LABEL/FUSE/MAIN	*	1									
19	1575-623-010-00	FUSE/32V10A	*	2									
20	1593-623-203-00	FUSE/32V20A	*	4									
21	1560-664-264-00	FUSE,BLADE	*	6									
22	1682-690-360-10	BRACKET/FUSE COMP	*	1									
23	V120-366-001-60	SCREW	*	2									
24	V201-260-813-00	BOLT/M 8X130	*	2									
25	V401-160-008-00	WASHER,SP/M 8	*	2									
26	V411-260-008-00	WASHER,PL/M 8	*	2									
27	1685-690-250-00	HARNESS/PANEL ASSY	*	1									

FIG. 93 HARNESS SYSTEM (EXCEPT H TYPE)



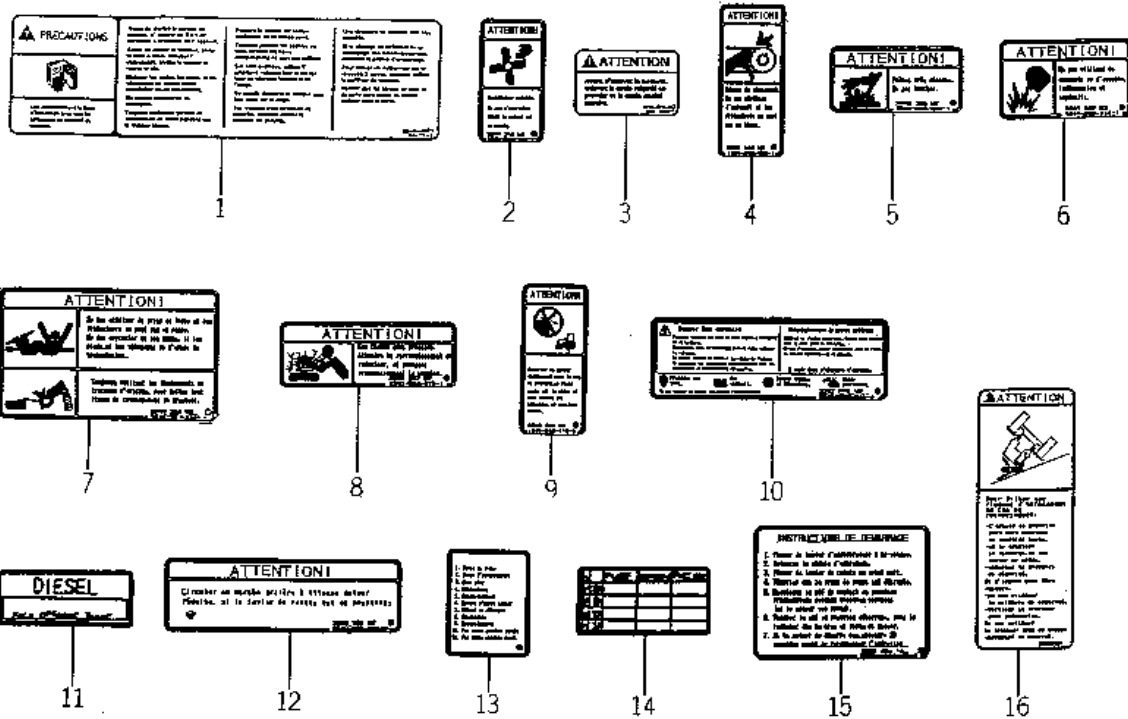
KEY	Part Code	Description	S P C	Type of Model						I T C	C O L	G R P	Remarks
				TM223									
1	1685-690-210-10	HARNESS/FRONT/E ASSY	*	1									
2	1600-624-004-00	HARNESS,OIL PRESSURE	*	1									
3	1376-402-003-00	BAND,WIRE/140	*	8									
4	1342-402-006-00	BAND,WIRE/250	*	2									
5	1425-621-004-00	CLAMP,HARNESS	*	1									
6	1685-690-220-00	HARNESS/MAIN/E4 ASSY	*	1									
7	1614-690-202-00	FUSE/SLOWBLOW	*	3									
8	1560-666-212-00	DIODE	*	2									
9	1560-664-264-00	FUSE,BLADE	*	4									
10	1593-623-503-00	CAP,FUSE BOX	*	1									
11	1376-402-003-00	BAND,WIRE/140	*	1									
12	1682-690-510-00	HARNESS/REAR/E4 ASSY	*	1									
13	1682-690-430-00	HARNESS/PTO/CHANGE	*	1									
14	1376-402-003-00	BAND,WIRE/140	*	5									
15	1342-402-006-00	BAND,WIRE/250	*	1									
16	1688-690-340-10	HARNESS/FUSE ASSY	*	1									
17	1650-650-246-00	COVER/FUSE	*	1									
18	1650-652-253-20	LABEL/FUSE/MAIN	*	1									
19	1575-623-010-00	FUSE/32V10A	*	2									
20	1593-623-203-00	FUSE/32V20A	*	4									
21	1560-664-264-00	FUSE,BLADE	*	6									
22	1682-690-360-10	BRACKET/FUSE COMP	*	1									
23	V120-366-001-60	SCREW	*	2									
24	V201-260-813-00	BOLT/M 8X130	*	2									
25	V401-160-008-00	WASHER,SP/M 8	*	2									
26	V411-260-008-00	WASHER,PL/M 8	*	2									
27	1685-690-250-00	HARNESS/PANEL ASSY	*	1									

FIG. 97 LABEL (ENGLISH) (OPTION)



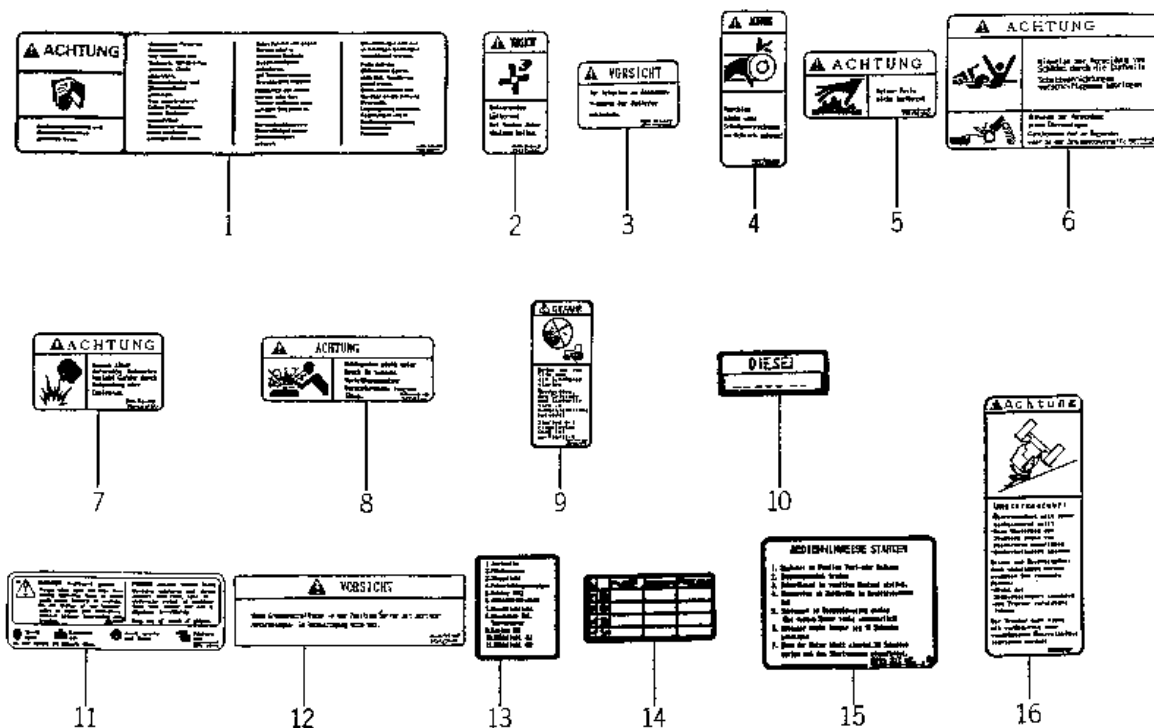
KEY	Part Code	Description	S P C	Type of Model						I T C	C O L	G R P	Remarks
				TM223									
1	1640-904-022-00	LABEL/C/DRIVE/G	T	1									
2	1640-904-006-00	LABEL/W/FAN	T	2									
3	1640-904-007-10	LABEL/FUSE/11/F	T	1									
4	1640-904-008-00	LABEL/W/SHIELD	T	2									
5	1640-904-009-10	LABEL/W/MUFFLER	T	1									
6	1640-904-011-00	LABEL/W/ETHER	T	1									
7	1640-904-013-00	LABEL/W/RADIATOR	T	1									
8	1640-904-012-00	LABEL/W/SHIELD/PTO	T	1									
9	1640-904-019-00	LABEL/D/STARTER	T	1									
10	1640-904-016-00	LABEL/D/BATTERY	T	1									
11	1427-941-016-00	MARK,FUEL	T	1									
12	1620-904-006-00	LABEL/FUSE/11	T	1									
13	1594-904-025-00	MARK,FUSE/4	T	1									
14	1640-904-005-10	LABEL/START/U	T	1									
15	1640-903-045-00	LABEL/W/ROPS/E30	T	1									

FIG. 98 LABEL (FRENCH) (EXCEPT E1 TYPE – OPTION)



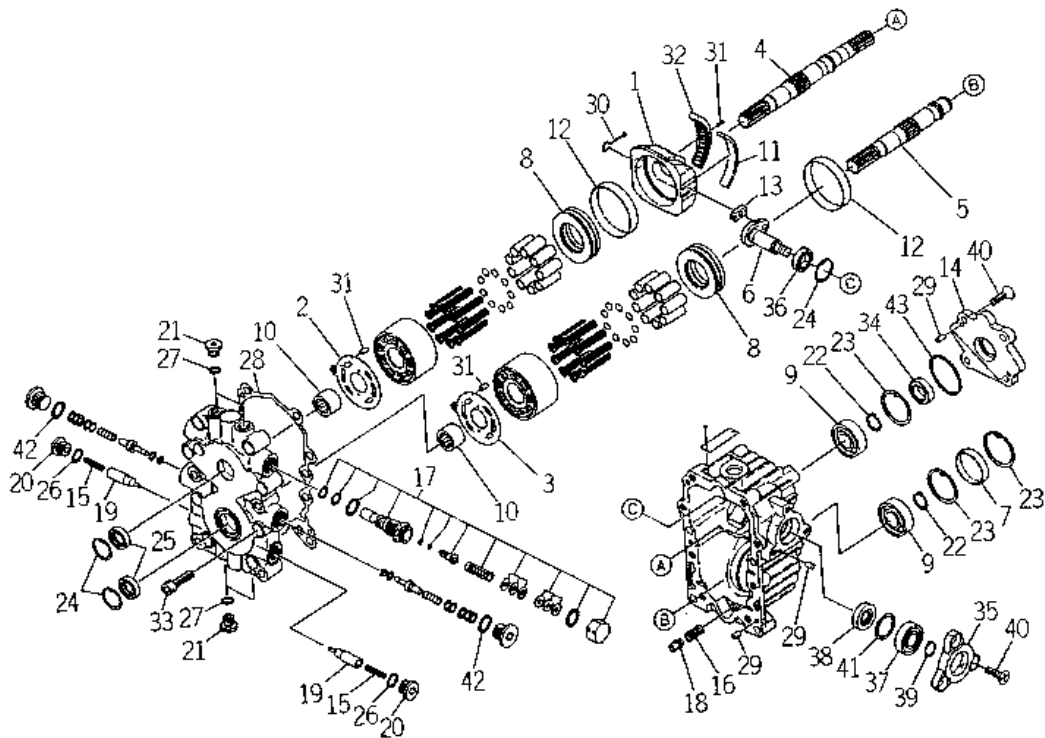
KEY	Part Code	Description	S P C	Type of Model					I T C	C O L	G R P	Remarks
				TM223								
1	1640-904-023-10	LABEL/C/DRIVE/F	T	1								
2	1640-903-006-10	LABEL/W/FAN/F	T	2								
3	1640-903-007-00	LABEL/C/BATTERY	T	1								
4	1640-903-008-10	LABEL/W/SHIELD/F	T	2								
5	1640-903-009-10	LABEL/W/MUFFLER/F	T	1								
6	1640-903-011-10	LABEL/W/ETHER/F	T	1								
7	1640-903-012-10	LABEL/C/SHIELD/PTO/F	T	1								
8	1640-903-013-10	LABEL/W/RADIATOR/F	T	1								
9	1640-903-015-20	LABEL/D/STARTER/F	T	1								
10	1640-903-016-10	LABEL/D/BATTERY/F	T	1								
11	1427-934-013-00	MARK,FUEL/FR	T	1								
12	1640-903-019-20	LABEL/C/SHIFT/F	T	1								
13	1620-904-007-10	LABEL/FUSE/11	T	1								
14	1594-904-025-00	MARK,FUSE/4	T	1								
15	1640-903-005-20	LABEL/START/F	T	1								
16	1640-903-046-00	LABEL/W/ROPS/E50	T	1								

FIG. 99 LABEL (GERMAN) (EXCEPT E1 TYPE – OPTION)



KEY	Part Code	Description	S P C	Type of Model					I T C	C O L	G R P	Remarks
				TM223								
1	1640-904-024-00	LABEL/C/DRIVE/D	T	1								
2	1640-903-026-00	LABEL/W/FAN	T	2								
3	1640-903-027-00	LABEL/C/BATTERY	T	1								
4	1640-903-028-00	LABEL/W/SHIELD	T	2								
5	1640-903-029-00	LABEL/W/MUFFLER	T	1								
6	1640-903-032-00	LABEL/W/SHIELD/PTO	T	1								
7	1640-903-031-00	LABEL/W/ETHER	T	1								
8	1640-903-033-00	LABEL/W/RADIATOR	T	1								
9	1640-903-035-00	LABEL/D/STARTER	T	1								
10	1600-902-023-00	LABEL,FUEL/D	T	1								
11	1640-903-036-00	LABEL/D/BATTERY	T	1								
12	1640-903-039-00	LABEL/C/SHIFT	T	1								
13	1620-904-008-00	LABEL/FUSE/11	T	1								
14	1594-904-025-00	MARK,FUSE/4	T	1								
15	1640-903-025-10	LABEL/START/D	T	1								
16	1640-903-047-00	LABEL/W/ROPS/E20	T	1								

FIG.104 COMPONENT PARTS FOR 1683 – 202 – 500 – 00 ON Fig.15



KEY	Part Code	Description	S P C	Type of Model					I T C	C O L	G R P	Remarks
				TM223								
1	1683-202-501-00	PLATE/SWASH	*	1								
2	1683-202-502-00	PLATE/VALVE	*	1								
3	1683-202-503-00	PLATE/VALVE	*	1								
4	1683-202-504-00	SHAFT/P	*	1								
5	1683-202-505-00	SHAFT/M	*	1								
6	1683-202-506-00	SHAFT/TRUNNION	*	1								
7	1683-202-507-00	PLUG/BOA	*	1								
8	1683-202-508-00	BEARING/THRUST	*	2								
9	1683-202-509-00	BEARING/BALL	*	2								
10	1683-202-511-00	BEARING/NEEDLE	*	2								
11	1683-202-512-00	BUSH	*	1								
12	1683-202-513-00	BUSH	*	2								
13	1683-202-514-00	METAL/SLIDE	*	1								
14	1683-202-515-00	COVER	*	1								
15	1683-202-516-00	SPRING	*	2								
16	1683-202-517-00	SPRING	*	1								
17	1683-202-518-00	VALVE/S/A	*	1								
18	1683-202-519-00	VALVE/S/A	*	1								
19	1683-202-521-00	POPPET	*	2								
20	1683-202-522-00	PLUG	*	2								
21	1683-202-523-00	PLUG	*	4								
22	V704-140-020-00	RING,SNAP/20C	*	2								
23	V705-140-047-00	RING,SNAP/47 C	*	3								
24	V705-140-030-00	RING,SNAP/30 C	*	3								
25	1683-202-524-00	SEAL/OIL	*	2								
26	V720-112-401-40	O-RING/P14	*	2								
27	V720-112-401-10	RING/O	*	4								
28	1683-202-525-00	GASKET	*	1								
29	1683-202-526-00	PIN	*	8								
30	1683-202-527-00	GUIDE ASSY	*	1								

