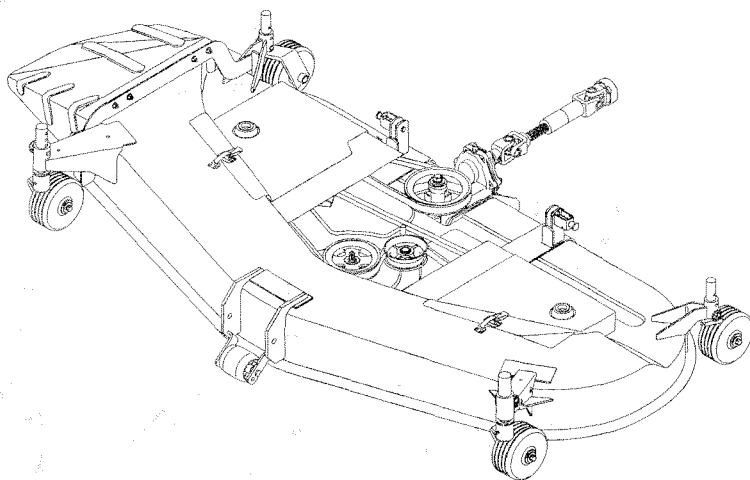




# Parts Catalogue



**MOWER**

**SSM72**

---

SSM72-TK538E4,  
TK538ME4

**8655-097-130-00**

Printed in Japan May, 2003





⑤ Upper column : QTY shows the number of parts to be used for one unit of machine.

˘M˘ is indicated for parts supplied by a meter long.

˘ℓ˘ is indicated for parts supplied by liter.

˘AR˘ is indicated for parts need to be adjusted or regulated.

Lower column : serial number

—229 means serial number up to 229.

230— means serial number 230 and after.

⑥ ITC : Interchangeability

˘1˘…OLD ← NEW

New parts can be used in place of the old parts.

˘2˘…OLD → NEW

Old parts can be used in place of the new parts.

˘3˘…OLD →← NEW

Old parts and new parts can not be replaced each other.

⑦ COL : Color code

Color is signified with color code number for colored parts.

Please see the color list shown in the next page.

⑧ GRP : Parts shown in this column can be replaced by SET parts.

Example : Parts marked ① can be replaced by parts marked ②, and ④ for

③, so the rest follow in the same alphabetical order.

⑨ Remarks

\* Other maker's part code number is shown in this column.

\* When Fig. No. is shown in the Remark column of SET parts or ASSY parts,

each of their component parts are listed in said Fig. No.

### 3. Color :

The following colors are used color parts.

COLOR CODE	COLOR	SPRAY TYPE CODE NUMBER	PAINTS 4K DRUM	PAINTS 16K DRUM
7 F	MIRROR BLACK	1300-954-001-10	1300-954-003-00	1300-954-004-00

NOTE : Color code is signified only for the parts assigned by the maker as color parts.

#### 4. Serial Numbers :

For chassis serial number is shown on the LABEL.

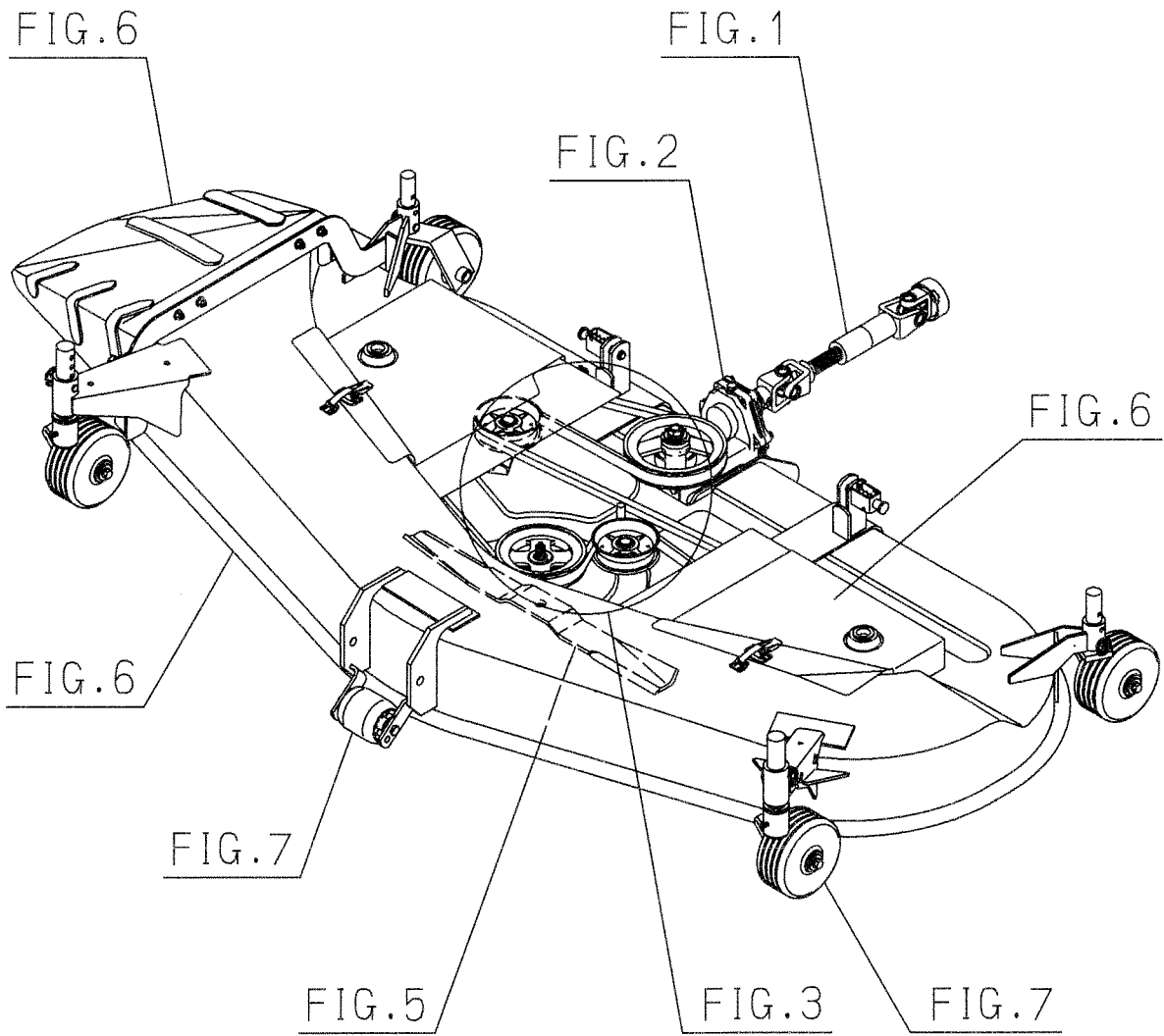
Please see



#### 5. Parts Order

- 1) Parts numbers listed in the parts catalogue are all registered in “ISEKI on-line computer”.
- 2) When you order parts, please make sure of correct numbers.
- 3) When substitute parts is available, the part number ordered will be automatically turned to a new part number.
- 4) Please be sure to use “ISEKI GENUINE PARTS”.

Any other similar parts other than ISEKI parts when used may cause a trouble that makes us unable to repair or guarantee the warrant.



# Contents

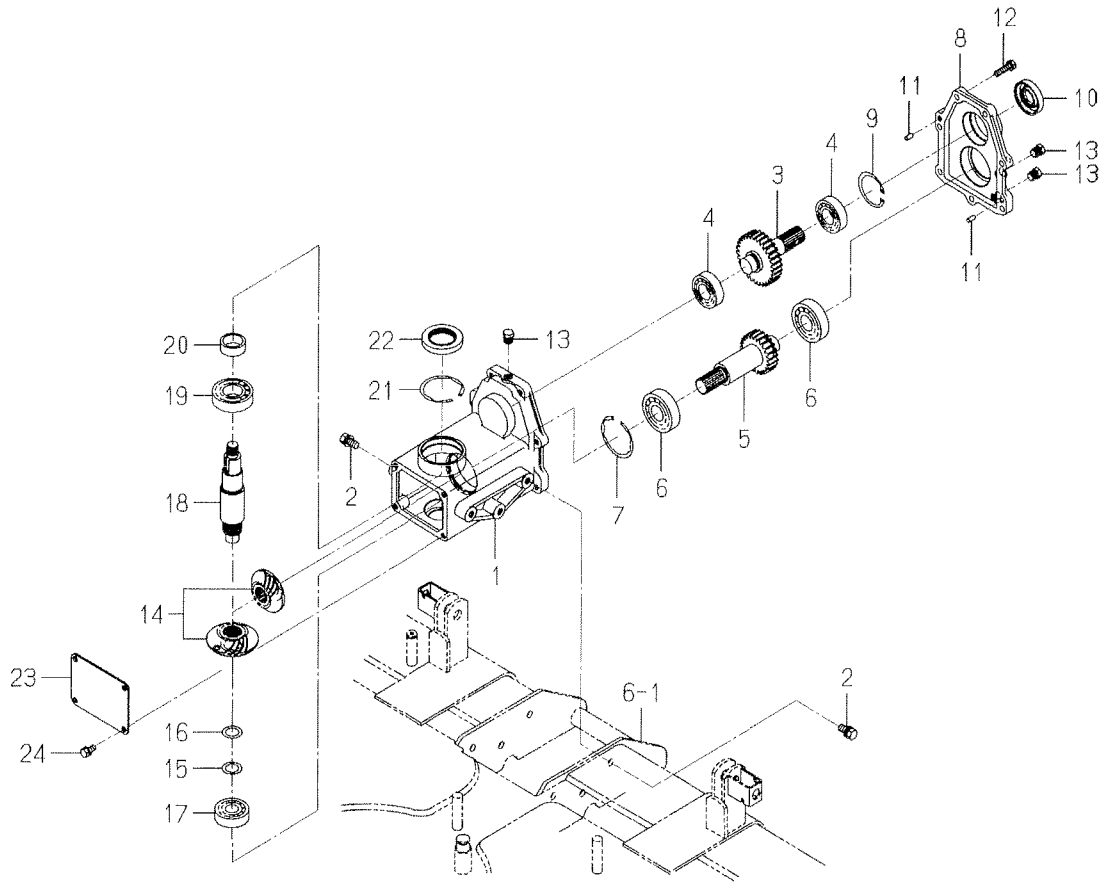
## SSM72-TK538

UNIVERSAL JOINT SYSTEM.....	Fig. 1
CASE (GEAR) SYSTEM.....	Fig. 2
PULLEY,BELT SYSTEM.....	Fig. 3
PTO (MID) SET.....	Fig. 4
METAL,BLADE SYSTEM.....	Fig. 5
MOWER DECK,COVER SYSTEM.....	Fig. 6
GAUGE WHEEL SYSTEM.....	Fig. 7
LINK SYSTEM(1/2)(2/2).....	Fig. 8
LIFT CYLINDER SYSTEM.....	Fig. 9
HEIGHT ADJUST SYSTEM.....	Fig. 10
LABEL.....	Fig. 11





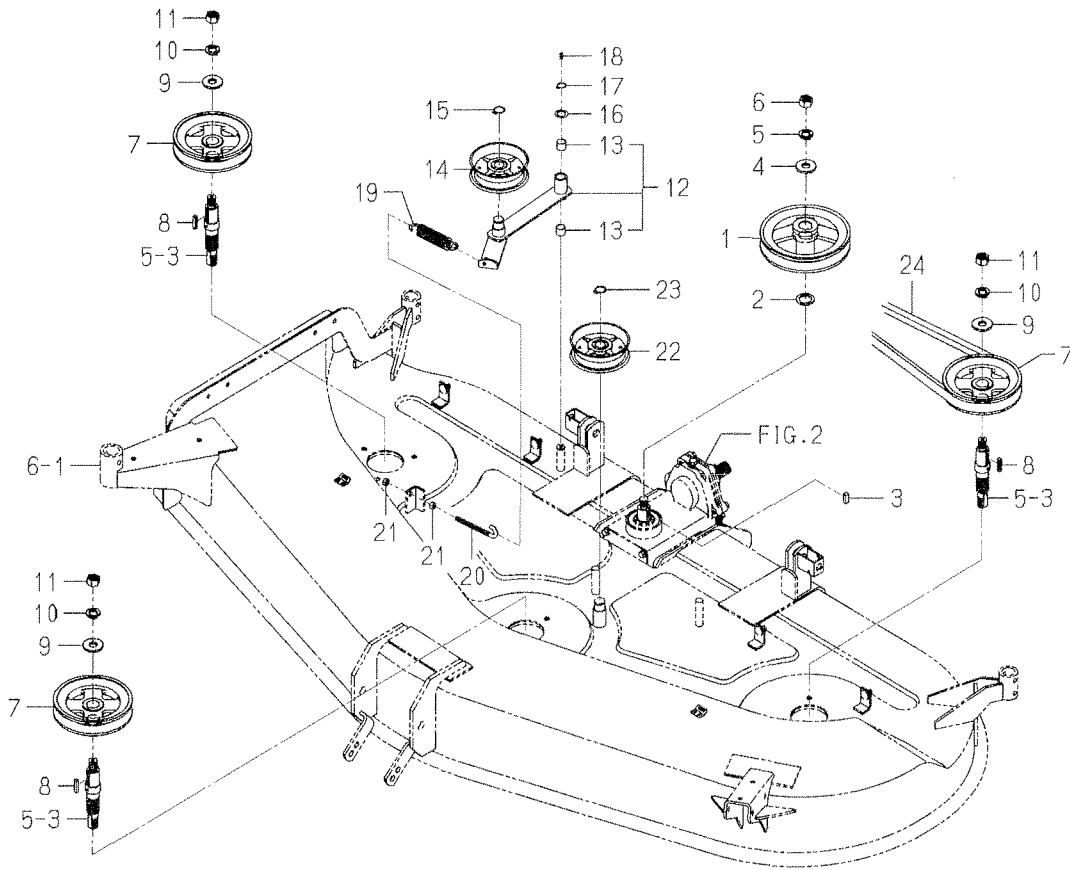
FIG. 2 CASE (GEAR) SYSTEM



8655-201C-0100

KEY	PART CODE	DESCRIPTION	S P C	TYPE OF MODEL		I T C	C O L	G R P	REMARKS
				SSM72	TK538				
1	8655-201-071-00	CASE/BEVEL	*	1					
2	V211-561-002-00	BOLT/M10X20	*	6					
3	8655-201-073-00	GEAR/SPUR/30	*	1					
4	1594-221-001-00	BEARING/BALL 6205SH2	*	2					
5	8655-201-074-00	GEAR/SPUR/23	*	1					
6	1594-218-001-00	BEARING/BALL 6305SH2	*	2					
7	V707-140-062-00	RING/SNAP	*	1					
8	8655-201-072-00	COVER/CASE	*	1					
9	V705-140-052-00	RING,SNAP/52 C	*	1					
10	V744-125-521-00	SEAL,OIL/TC255210	*	1					
11	8658-306-003-00	PIN/PARALLEL	*	2					
12	V211-560-803-00	BOLT/M8X30	*	7					
13	7955-201-026-00	PLUG,DRAIN (1/4)	*	3					
14	8662-201-210-00	GEAR/BEVEL/21-2 SET	*	1					
15	2500-311-018-00	SHIM/0.5	*	1					
16	2500-311-019-00	SHIM/0.3X20X30	*	1					
17	V600-110-630-40	BEARING,RB/6304	*	1					
18	8655-201-075-00	SHAFT/OUTPUT	*	1					
19	V600-110-620-60	BEARING,RB/6206	*	1					
20	1614-244-002-00	SLEEVE	*	1					
21	V707-140-062-00	RING/SNAP	*	1					
22	1614-244-005-00	SEAL/OIL	*	1					
23	8655-201-076-00	COVER/CASE	*	1					
24	V211-260-801-60	BOLT,SEMS (S) M8X16	*	4					

FIG. 3 PULLEY,BELT SYSTEM



8655-202C-0100,8655-203C-0100

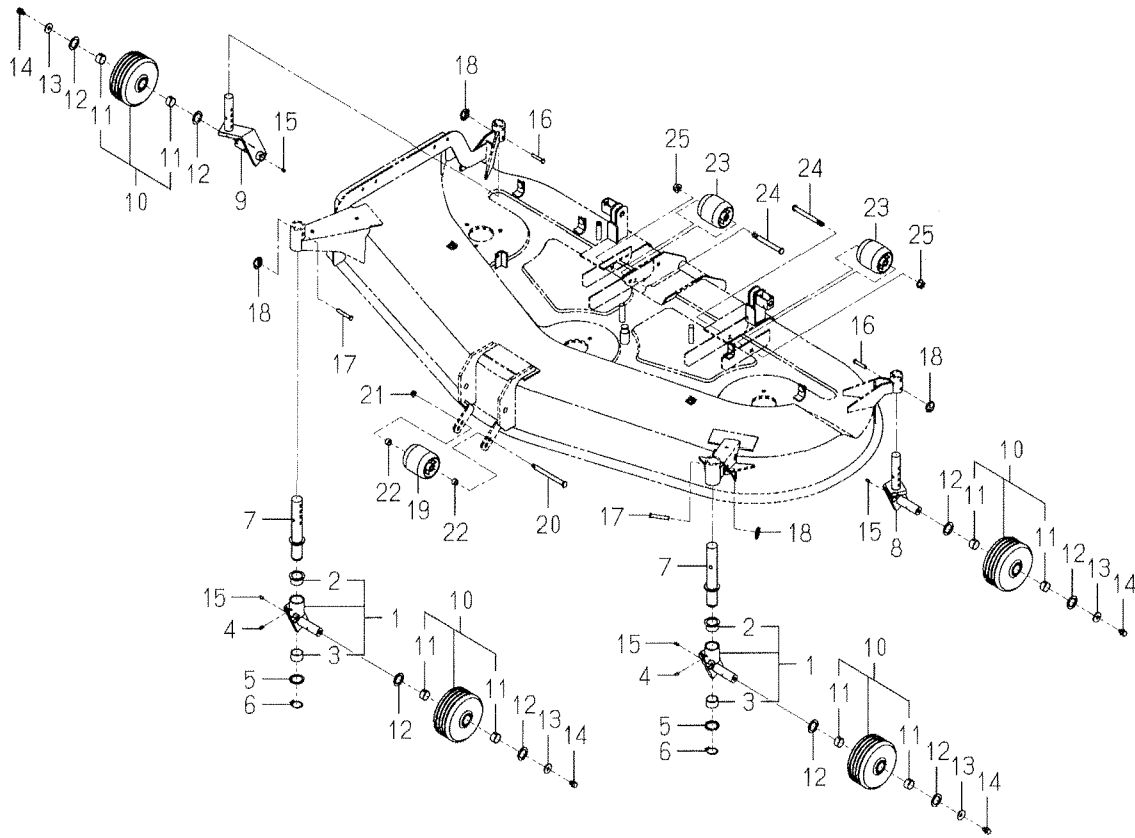
KEY	PART CODE	DESCRIPTION	S P C	TYPE OF MODEL		I T C	C O L	G R P	REMARKS
				SSM72 TK538					
1	8655-202-051-00	PULLEY/VC173	*	1					
2	1434-211-004-00	COLLAR/26X36X3	*	1					
3	3670-520-001-00	KEY/08X07X20	*	1					
4	3746-111-011-00	WASHER	*	1					
5	V401-160-016-00	WASHER,SP/M16	*	1					
6	V305-460-016-00	NUT	*	1					
7	8655-202-062-00	PULLEY/VC150	*	3					
8	8654-202-016-00	KEY/06X06X28	*	3					
9	3746-111-011-00	WASHER	*	3					
10	V401-160-016-00	WASHER,SP/M16	*	3					
11	V304-460-016-00	NUT/M16	*	3					
12	8655-202-510-00	ARM/TENSION ASSY	*	1					
13	8597-202-501-00	BUSH/16X18X15	*	2					
14	3100-703-230-10	PULLEY,TENSION/100	*	1					
15	V704-140-020-00	RING,SNAP/20C	*	1					
16	3621-211-003-00	WASHER	*	1					
17	V704-140-016-00	RING,SNAP/16 C	*	1					
18	V760-150-000-00	NIPPLE,GREASE	*	1					
19	3737-341-006-00	SPRING,CHAIN TENSION	*	1					
20	3737-341-007-00	ROD,CHAIN TENSION	*	1					
21	V304-260-008-00	NUT	*	2					
22	3100-703-230-10	PULLEY,TENSION/100	*	1					
23	V704-140-020-00	RING,SNAP/20C	*	1					
24	8655-203-051-00	BELT/VC164	*	1					







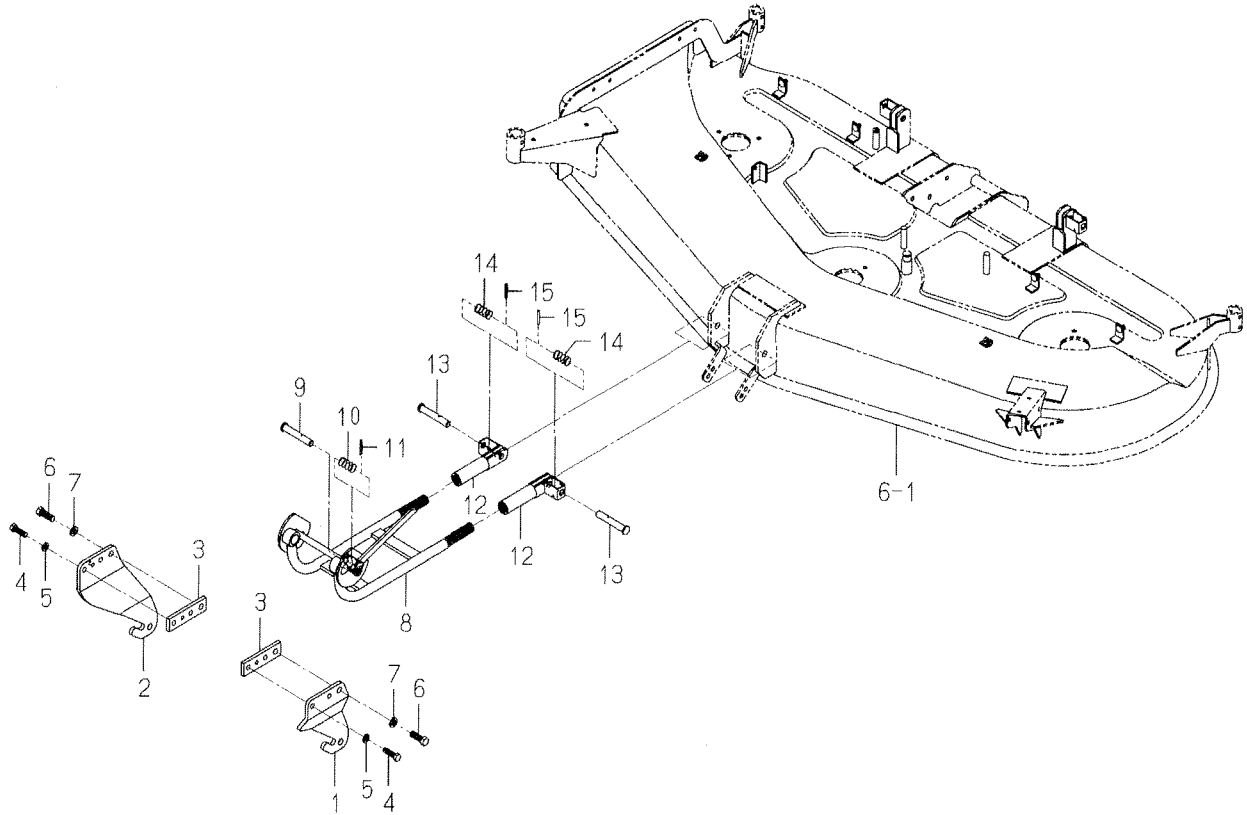
FIG. 7 GAUGE WHEEL SYSTEM



8655-501C-0100

KEY	PART CODE	DESCRIPTION	S P C	TYPE OF MODEL		I T C	C O L	G R P	REMARKS
				SSM72	TK538				
1	8655-501-510-00	FORK/WHEEL/F ASSY	*	2				7F	
2	8655-501-511-00	BUSH/32X36X20	*	2					
3	K167-001-302-00	BUSH/32X36X20	*	2					
4	V760-150-000-00	NIPPLE,GREASE	*	2					
5	8655-501-051-00	WASHER/33X44X02	*	2					
6	V704-140-032-00	RING,SNAP/32 C	*	2					
7	8655-501-530-00	PIN/GAUGE COMP	*	2				7F	
8	8655-501-540-00	FORK/WHEEL/REAR/LH	*	1					
9	8655-501-550-00	FORK/WHEEL/REAR/RH	*	1					
10	8654-501-720-00	WHEEL/GAUGE ASSY	*	4					
11	8654-203-201-00	BUSH/25X28X15	*	8					
12	1564-275-007-00	WASHER/27X40X2	*	8					
13	3659-170-003-00	WASHER/11X30X3	*	4					
14	V211-261-001-60	BOLT(S) M10X16	*	4					
15	V760-150-000-00	NIPPLE,GREASE	*	4					
16	8595-505-002-00	PIN/08X44	*	2					
17	8654-501-012-00	PIN/09X55	*	2					
18	1427-317-003-00	CLIP,PIN	*	4					
19	8595-501-001-10	WHEEL/GAUGE/FRONT	*	1					
20	8654-501-041-00	PIN/12X133	*	1					
21	V363-260-008-00	NUT/WASHER	*	1					
22	3664-416-072-00	WASHER/13X17X10	*	2					
23	8595-501-001-10	WHEEL/GAUGE/FRONT	*	2					
24	8595-505-051-30	PIN/12X117	*	2					
25	V360-260-012-00	NUT/WASHER	*	2					

FIG. 8 LINK SYSTEM(1/2)



8655-608A-0100

KEY	PART CODE	DESCRIPTION	S P C	TYPE OF MODEL		I T C	C O L	G R P	REMARKS
				SSM72	TK538				
1	8655-608-061-10	BRACKET/FRONT/LH	*	1					
2	8655-608-062-10	BRACKET/FRONT/RH	*	1					
3	8655-608-051-00	PLATE/I/38X130	*	2					
4	V201-361-204-00	BOLT/M12X40	*	4					
5	V401-160-012-00	WASHER,SP/M12	*	4					
6	V201-361-404-00	BOLT/M14X40	*	2					
7	V401-160-014-00	WASHER,SP/M14	*	2					
8	8657-608-810-00	ARM/FRONT COMP	*	1			7F		
9	8595-608-082-00	PIN/16X96	*	1					
10	1560-601-028-00	SPRING/HC042	*	1					
11	V580-140-504-00	PIN,SPRING/5 X40 W	*	1					
12	8595-608-820-00	HITCH/ARM COMP	*	2			7F		
13	8595-608-082-00	PIN/16X96	*	2					
14	1560-601-028-00	SPRING/HC042	*	2					
15	V580-140-504-00	PIN,SPRING/5 X40 W	*	2					
16	8655-608-510-00	BRACKET/LH COMP	*	1					
17	8655-608-520-00	BRACKET/RH COMP	*	1					
18	8655-608-530-00	BRACKET/MID/LH COMP	*	1					
19	8655-608-540-00	BRACKET/MID/RH COMP	*	1					
20	V201-361-603-00	BOLT	*	4					
21	V401-160-016-00	WASHER,SP/M16	*	4					
22	8595-608-870-00	STOPPER COMP	*	2					
23	1593-101-012-00	STOPPER	*	2					
24	V304-260-012-00	NUT/M12	*	2					
25	8655-608-550-00	ARM/MID COMP	*	2					
26	8657-608-052-00	PIN/16X43	*	2					
27	1427-317-003-00	CLIP,PIN	*	2					
28	8655-608-560-00	BRACKET/REAR/LH COMP	*	1					
29	8655-608-561-00	PLATE/I/100X207	*	1					
30	V201-361-203-00	BOLT/M12X30	*	4					











## Numerical Index

8655-097-130-00

Part Code	Fig.Key	Part Code	Fig.Key	Part Code	Fig.Key
1342-402-006-00	9 18	3670-520-001-00	3 3	8655-201-072-00	2 8
1426-258-200-10	4 12	3737-341-006-00	3 19	8655-201-073-00	2 3
1427-317-003-00	6 7	3737-341-007-00	3 20	8655-201-074-00	2 5
	7 18	3746-111-011-00	3 4	8655-201-075-00	2 18
	8 27		3 9	8655-201-076-00	2 23
	8 39	3814-371-004-00	9 17	8655-202-051-00	3 1
	9 15	7955-201-026-00	2 13	8655-202-062-00	3 7
1432-403-007-10	10 3	8595-306-005-00	5 13	8655-202-510-00	3 12
1434-211-004-00	3 2	8595-306-006-00	5 14	8655-203-051-00	3 24
1435-203-001-00	4 16	8595-306-007-00	5 15	8655-306-003-00	5 12
1444-314-009-10	4 19	8595-501-001-10	7 19	8655-403-530-00	6 1
1524-244-005-00	4 11		7 23	8655-406-210-20	6 8
1560-273-003-00	4 10	8595-505-002-00	7 16	8655-407-530-00	6 15
1560-601-028-00	6 3	8595-505-051-30	7 24	8655-407-540-00	6 17
	8 10	8595-608-082-00	6 2	8655-501-051-00	7 5
	8 14		8 9	8655-501-510-00	7 1
1564-275-007-00	7 12		8 13	8655-501-511-00	7 2
1593-101-012-00	8 23	8595-608-820-00	8 12	8655-501-530-00	7 7
1593-901-015-00	11 7	8595-608-870-00	8 22	8655-501-540-00	7 8
1594-218-001-00	2 6	8595-901-005-00	11 3	8655-501-550-00	7 9
1594-221-001-00	2 4	8595-901-006-00	11 4	8655-608-051-00	8 3
	5 4	8595-901-007-00	11 5	8655-608-061-10	8 1
1594-272-001-00	4 2	8597-202-501-00	3 13	8655-608-062-10	8 2
1594-272-003-00	4 13	8654-101-212-00	1 3	8655-608-510-00	8 16
1594-272-004-00	4 14	8654-101-221-00	1 7	8655-608-520-00	8 17
1594-272-006-00	4 17	8654-101-222-00	1 8	8655-608-530-00	8 18
1614-244-002-00	2 20	8654-101-230-00	1 4	8655-608-540-00	8 19
1614-244-005-00	2 22		1 9	8655-608-550-00	8 25
1640-272-001-00	4 7	8654-101-232-00	1 5	8655-608-560-00	8 28
1640-272-200-00	4 1		1 10	8655-608-561-00	8 29
1642-410-001-00	10 10	8654-101-233-00	1 6	8655-608-570-00	8 32
1682-408-220-00	9 16		1 11	8655-610-510-00	9 1
2144-519-003-00	6 6	8654-202-016-00	3 8	8655-610-520-00	9 11
2149-602-012-00	6 16	8654-203-201-00	7 11	8655-611-051-00	10 13
	6 18	8654-301-004-00	5 7	8655-611-052-00	10 9
2500-311-018-00	2 15	8654-301-085-00	5 3	8655-611-510-00	10 5
2500-311-019-00	2 16	8654-406-001-00	6 11	8655-611-520-00	10 1
2500-901-014-30	11 2	8654-501-012-00	7 17	8655-901-051-00	11 8
2500-901-027-00	11 1	8654-501-041-00	7 20	8655-901-052-00	11 10
3100-703-230-10	3 14	8654-501-283-00	8 33	8657-101-501-00	1 2
	3 22	8654-501-720-00	7 10	8657-301-004-00	5 1
3621-211-003-00	3 16	8654-610-001-00	9 14	8657-608-052-00	8 26
3659-170-003-00	7 13	8654-901-002-00	11 6	8657-608-053-10	8 38
3664-416-072-00	7 22	8655-101-520-00	1 1	8657-608-590-10	8 35
3670-471-005-00	6 12	8655-201-071-00	2 1	8657-608-610-10	8 36

# Numerical Index

8655-097-130-00

Part Code	Fig.Key	Part Code	Fig.Key	Part Code	Fig.Key
8657-608-810-00	8 8	V401-160-012-00	6 14		
8657-610-051-00	9 13		8 5		
8657-611-004-00	10 7		8 31		
8657-611-230-00	10 6	V401-160-014-00	8 7		
8657-901-001-00	11 9	V401-160-016-00	3 5		
8658-301-001-00	5 9		3 10		
8658-306-003-00	2 11		8 21		
8662-201-210-00	2 14	V401-160-020-00	5 16		
8662-402-250-00	6 5	V411-260-010-00	9 4		
A101-212-003-00	10 4	V411-260-012-00	8 40		
K167-001-302-00	7 3		10 11		
K182-002-002-00	9 8	V500-162-502-50	10 12		
K182-032-000-00	9 6	V523-101-002-40	4 4		
K182-032-001-00	9 7	V580-140-402-50	10 8		
K182-032-002-00	9 9	V580-140-504-00	6 4		
K182-032-003-00	9 10		8 11		
K211-004-014-00	9 12		8 15		
P115-810-011-00	6 9	V580-140-804-00	1 12		
V201-361-005-00	9 3	V600-110-620-60	2 19		
V201-361-203-00	8 30		4 8		
V201-361-204-00	8 4	V600-110-620-70	4 9		
V201-361-217-00	9 2	V600-110-630-40	2 17		
V201-361-404-00	8 6	V600-110-690-80	5 5		
V201-361-603-00	8 20	V654-425-322-40	4 15		
V211-260-801-60	2 24	V704-140-016-00	3 17		
V211-261-001-60	7 14	V704-140-020-00	3 15		
V211-261-002-50	5 2		3 23		
V211-261-003-00	4 3	V704-140-032-00	7 6		
V211-360-801-60	4 20	V705-140-052-00	2 9		
V211-560-801-60	4 18		5 6		
V211-560-803-00	2 12	V707-140-062-00	2 7		
V211-561-002-00	2 2		2 21		
V211-661-004-00	10 2		5 10		
V304-260-008-00	3 21	V707-140-072-00	4 5		
V304-260-012-00	6 13	V744-125-521-00	2 10		
	8 24	V744-135-520-80	5 8		
V304-260-016-00	8 37	V760-150-000-00	3 18		
V304-460-016-00	3 11		5 11		
V305-460-016-00	3 6		7 4		
V360-260-006-00	10 14		7 15		
V360-260-012-00	7 25		8 34		
V363-260-008-00	6 10	V781-160-000-6B	4 6		
	6 19				
	7 21				
V401-160-010-00	9 5				

## Alphabetical Index

8655-097-130-00

Description	Fig.Key	Description	Fig.Key	Description	Fig.Key
ADAPTER(3/8X1/4)	9 17	BUSH/32X36X20	7 3	LABEL/CE	11 1
ADAPTER/L/ORI/1.3	9 11	CAP, PTO SHAFT	4 19	LABEL/DANGER	11 2
ARM/FRONT COMP	8 8	CAP/32	6 16	LABEL/DANGER/DISCHAR	11 3
ARM/MID COMP	8 25	CAP/32	6 18	LABEL/GAUGE	11 10
ARM/TENSION ASSY	3 12	CASE	4 2	LABEL/GAUGEWHEEL	11 8
AS YOKE ASSY	1 2	CASE/BEVEL	2 1	LABEL/MAINTENANCE	11 7
BAND, WIRE/250	9 18	CLIP, PIN	6 7	LABEL/PTO	11 6
BEARING	5 5	CLIP, PIN	7 18	LABEL/WARNING/BELT	11 4
BEARING KT253224	4 15	CLIP, PIN	8 27	LABEL/WARNING/HOT	11 5
BEARING, RB/6206	2 19	CLIP, PIN	8 39	LINK/REAR ASSY	8 32
BEARING, RB/6206	4 8	CLIP, PIN	9 15	METAL	4 10
BEARING, RB/6207	4 9	COLLAR/13X17X33	10 10	METAL/SIDE	5 1
BEARING, RB/6304	2 17	COLLAR/25X46X3	4 16	NIPPLE, GREASE	3 18
BEARING/BALL 6205SH2	2 4	COLLAR/26X36X3	3 2	NIPPLE, GREASE	5 11
BEARING/BALL 6205SH2	5 4	COLLAR/BRADE	5 9	NIPPLE, GREASE	7 4
BEARING/BALL 6305SH2	2 6	COVER/BELT/LH COMP	6 15	NIPPLE, GREASE	7 15
BELT/VC164	3 24	COVER/BELT/RH COMP	6 17	NIPPLE, GREASE	8 34
BLADE/60X630/C	5 12	COVER/CASE	2 8	NUT	3 6
BOLT	8 20	COVER/CASE	2 23	NUT	3 21
BOLT	9 2	COVER/DISCHARGE COMP	6 8	NUT/ADJUST	10 9
BOLT(S) M10X16	7 14	CYLINDER ASSY	9 6	NUT/GAUGE COMP	10 6
BOLT(S) M10X25	5 2	DECK/MOWER/72/T COMP	6 1	NUT/M12	6 13
BOLT(S) M10X30	4 3	DUST/SEAL	9 10	NUT/M12	8 24
BOLT, SEMS	4 18	FITTINGYOKE	1 7	NUT/M16	3 11
BOLT, SEMS (SP)	4 20	FORK/A COMP	8 35	NUT/M16	8 37
BOLT, SEMS (S) M8X16	2 24	FORK/B COMP	8 36	NUT/M20X1.5	5 15
BOLT/M10X20	2 2	FORK/WHEEL/F ASSY	7 1	NUT/M6	10 14
BOLT/M10X50	9 3	FORK/WHEEL/REAR/LH	7 8	NUT/WASHER	6 10
BOLT/M12X30	8 30	FORK/WHEEL/REAR/RH	7 9	NUT/WASHER	6 19
BOLT/M12X40	8 4	GEAR/BEVEL/21-2 SET	2 14	NUT/WASHER	7 21
BOLT/M14X40	8 6	GEAR/SPUR/23	2 5	NUT/WASHER	7 25
BOLT/M8X30	2 12	GEAR/SPUR/30	2 3	O-RING	4 11
BOLT/SP	10 2	GEAR/SPUR/37	4 13	PIN	4 4
BRACKET/FRONT/LH	8 1	GREASENIPPLE	1 5	PIN, SPLIT/2.5X25	10 12
BRACKET/FRONT/RH	8 2	GREASENIPPLE	1 10	PIN, SPRING/4 X25	10 8
BRACKET/LH COMP	8 16	HITCH/ARM COMP	8 12	PIN, SPRING/5 X40 W	6 4
BRACKET/MID/LH COMP	8 18	HOSE/DERIVERY ASSY	9 16	PIN, SPRING/5 X40 W	8 11
BRACKET/MID/RH COMP	8 19	HUB/GAUGE COMP	6 5	PIN, SPRING/5 X40 W	8 15
BRACKET/REAR/LH COMP	8 28	JOINT/UNIVERSAL SET	1 1	PIN, SPRING/8 X40 W	1 12
BRACKET/RH COMP	8 17	JOURNALCROSSE ASSY	1 4	PIN/08X44	7 16
BUSH/14X16X10	10 4	JOURNALCROSSE ASSY	1 9	PIN/09X55	7 17
BUSH/16X18X15	3 13	KEY/06X06X28	3 8	PIN/10X64	6 6
BUSH/22X25X25	8 33	KEY/08X07X20	3 3	PIN/12X117	7 24
BUSH/25X28X15	7 11	KNOB/10X33	10 7	PIN/12X133	7 20
BUSH/32X36X20	7 2	LABEL/ADJUST	11 9	PIN/12X42	8 38

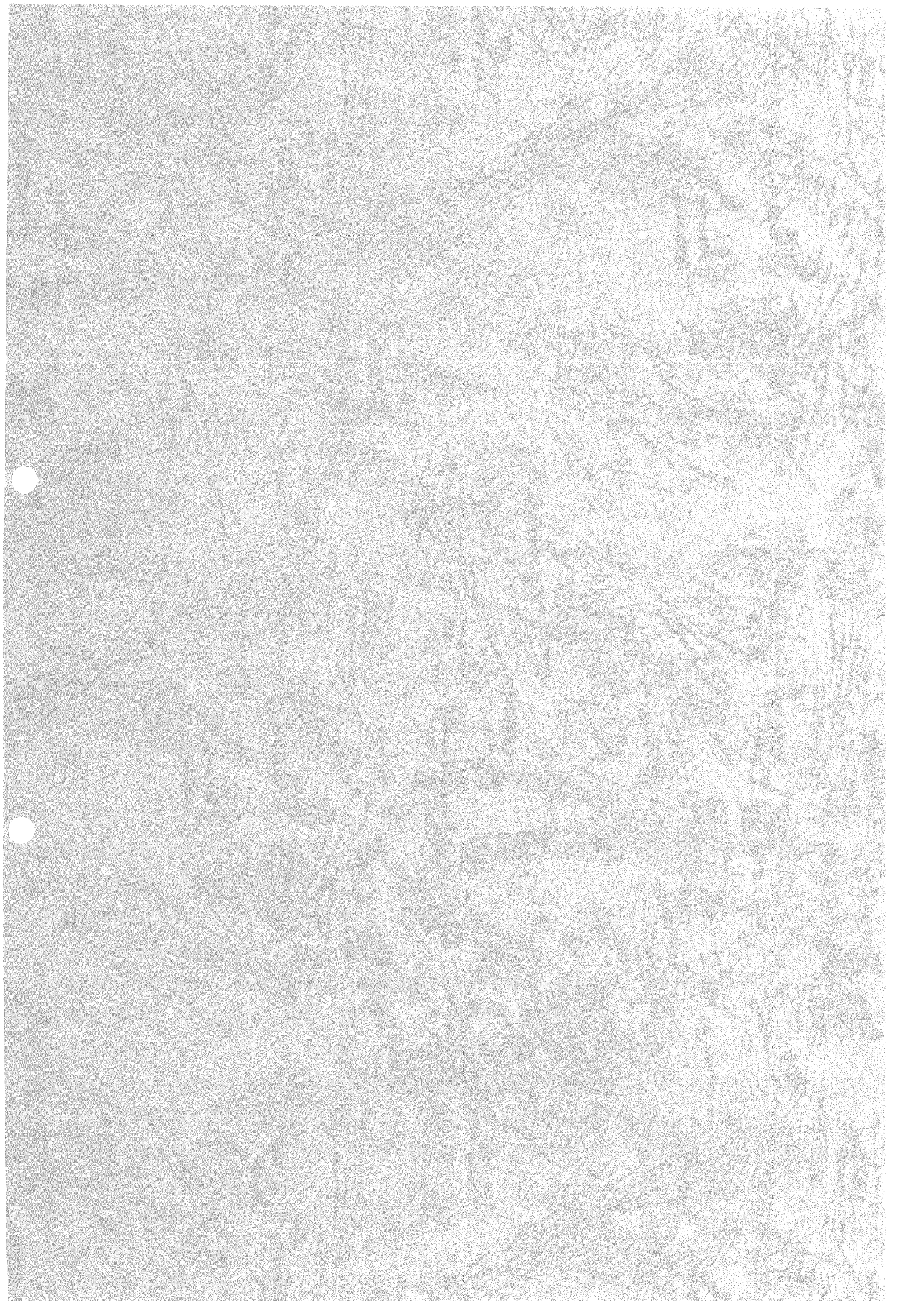
# Alphabetical Index

8655-097-130-00

Description	Fig.Key	Description	Fig.Key	Description	Fig.Key
PIN/15X71	9 14	SHIM/0. 3X20X30	2 16		
PIN/15X88	9 13	SHIM/0. 5	2 15		
PIN/16X43	8 26	SHIM/1. 2	5 14		
PIN/16X96	6 2	SLEEVE	2 20		
PIN/16X96	8 9	SLEEVEYOKE ASSY	1 3		
PIN/16X96	8 13	SPRING, CHAIN TENSION	3 19		
PIN/GAUGE COMP	7 7	SPRING/HCO42	6 3		
PIN/PARALLEL	2 11	SPRING/HCO42	8 10		
PISTON	9 7	SPRING/HCO42	8 14		
PLATE	4 17	STAY/CYLINDER COMP	9 1		
PLATE/03X15X65	6 9	STAY/GAUGE COMP	10 1		
PLATE/GAUGE	10 13	STOPPER	8 23		
PLATE/I/100X207	8 29	STOPPER COMP	8 22		
PLATE/I/38X130	8 3	STOPPER, PISTON	9 8		
PLUG, DRAIN (1/4)	2 13	STOPPER/COVER	6 11		
PLUG/SCREW/SEAL	4 6	SURCLIP/HOLE	1 6		
PTO/MID SET	4 1	SURCLIP/HOLE	1 11		
PULLEY, TENSION/100	3 14	WASHER	3 4		
PULLEY, TENSION/100	3 22	WASHER	3 9		
PULLEY/VC150	3 7	WASHER	3 16		
PULLEY/VC173	3 1	WASHER	10 3		
RING, SNAP/16 C	3 17	WASHER /M12	8 40		
RING, SNAP/20C	3 15	WASHER /M12	10 11		
RING, SNAP/20C	3 23	WASHER, SP/M10	9 5		
RING, SNAP/32 C	7 6	WASHER, SP/M12	6 14		
RING, SNAP/52 C	2 9	WASHER, SP/M12	8 5		
RING, SNAP/52 C	5 6	WASHER, SP/M12	8 31		
RING/SNAP	2 7	WASHER, SP/M14	8 7		
RING/SNAP	2 21	WASHER, SP/M16	3 5		
RING/SNAP	4 5	WASHER, SP/M16	3 10		
RING/SNAP	5 10	WASHER, SP/M16	8 21		
ROD PACKING	9 9	WASHER, SP/M20	5 16		
ROD, CHAIN TENSION	3 20	WASHER/11X30X3	7 13		
SCREW, ORIFICE	9 12	WASHER/12X30X05	6 12		
SEAL ASSY	4 12	WASHER/13X17X10	7 22		
SEAL, OIL/TC255210	2 10	WASHER/20X60X06	5 13		
SEAL, OIL/TC35528	5 8	WASHER/27X40X2	7 12		
SEAL/OIL	2 22	WASHER/33X44X02	7 5		
SEAL/OIL	5 7	WASHER/M10	9 4		
SHAFT/ADJUST COMP	10 5	WHEEL/GAUGE ASSY	7 10		
SHAFT/IDLE	4 14	WHEEL/GAUGE/FRONT	7 19		
SHAFT/OUTPUT	2 18	WHEEL/GAUGE/FRONT	7 23		
SHAFT/PTO/MID/SAE	4 7				
SHAFT/SIDE	5 3				
SHAFTYOKE ASSY	1 8				









**ISEKI & CO., LTD.**

**INTERNATIONAL BUSINESS DIVISION**  
3-14, 5-Chome, Nishinipori,  
Arakawa-ku, Tokyo, 116-8541, Japan  
Fax : 03-5604-7703  
Phone : 03-5604-7658~7661