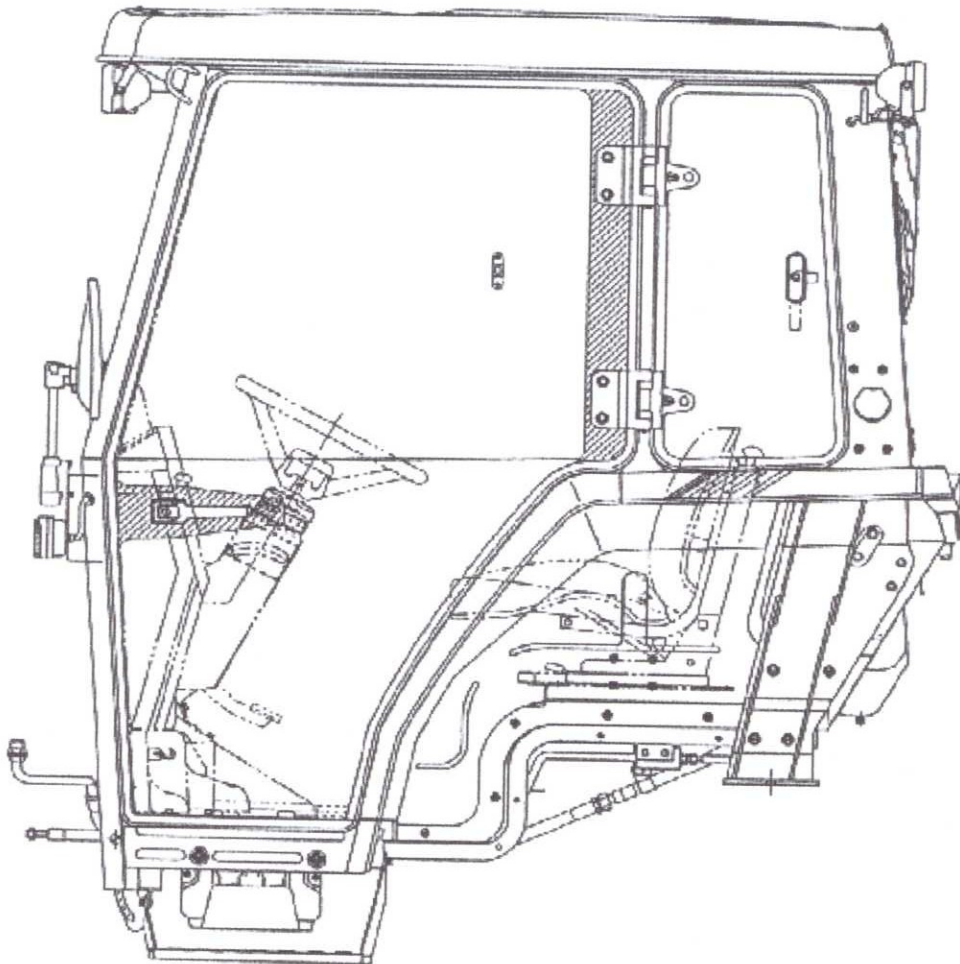


iseki tractor

TK546 cabin technical training



iseki

	TK546 cabin
--	----------------

TK546 technical training

CABIN

disassembling /assembling manual

page

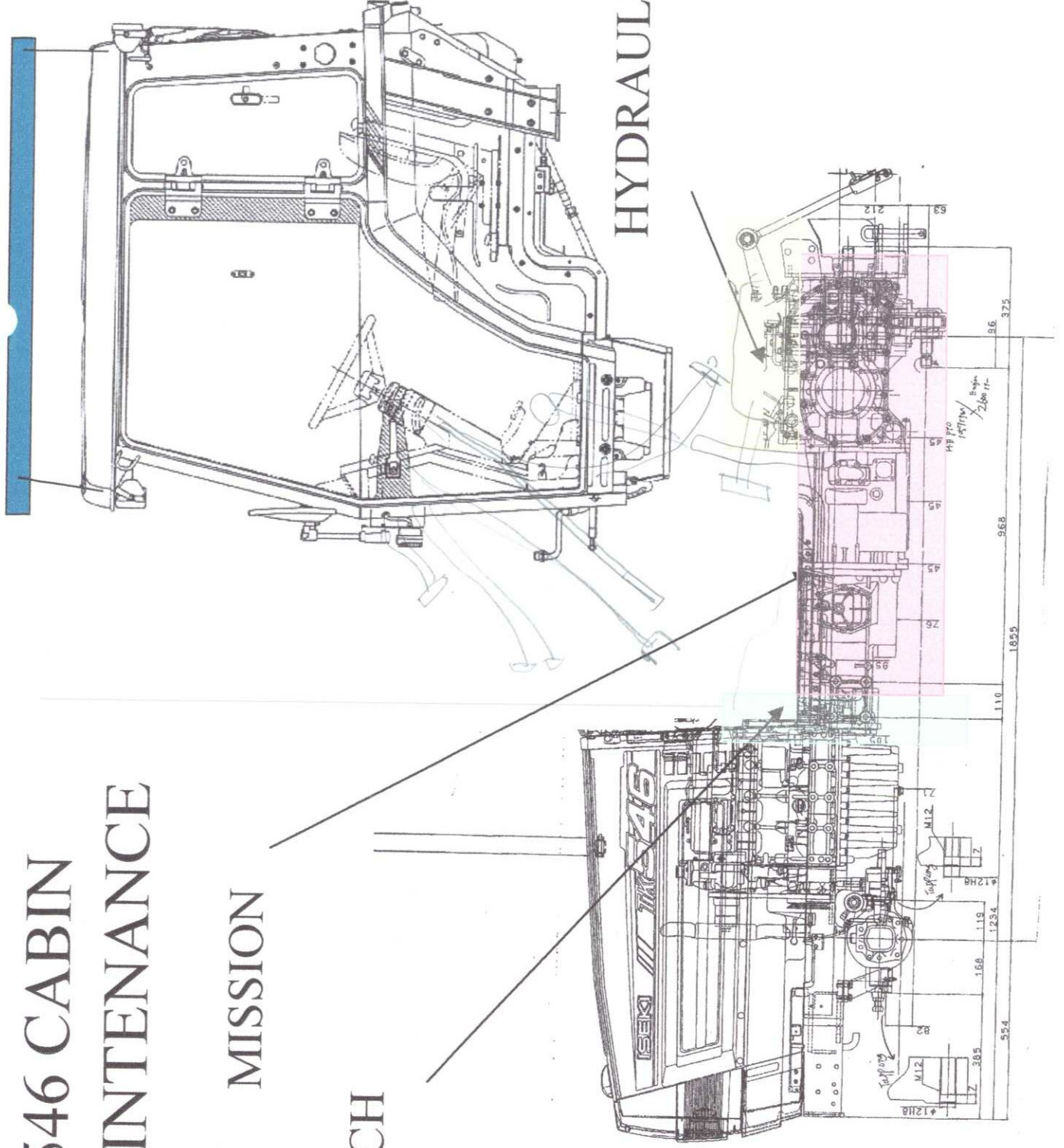
1 preparation	1
2 air conditioner	1~4
3 engine room	5~9
4 cabin (inside of the room)	10~15
5 cabin (outside)	16~19
6 CABIN hanging	20

TK546 CABIN MAINTENANCE

MISSION

CLUTCH

HYDRAULIC



to disassemble the cabin

1 preparation

- to use the ceiling crane (or fork lift .or jack)
and prepare the rigid .
- need oil return operation (over 20 min)
to return the air con oil to the compressor

2 air conditioner

- remove the side cover (LH side and RH side)

sidecover
LH



sidecover
RH



- remove the grille
disconnect the harness
coupler of the light

disconnect the coupler
of the light

grille



- remove the hood
2-bolts LH & RH side
remove the washer
hose.
release the harness
from clip.

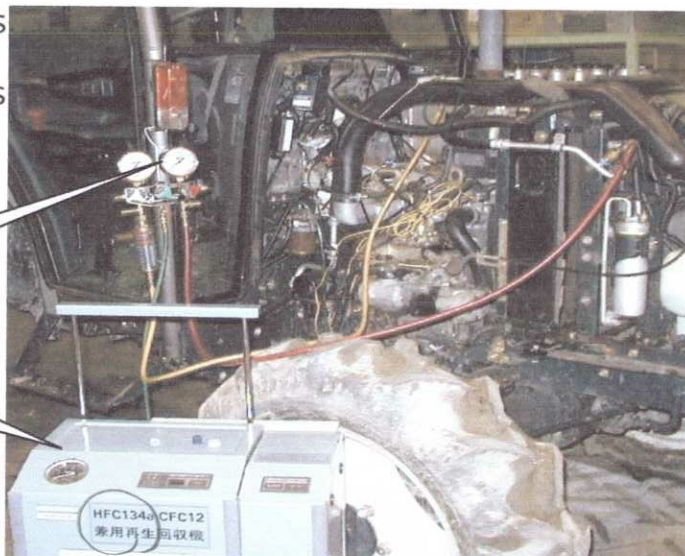
hood



- to collect the gas
note
not release the gas
to the atmosphere.
keep the gap from
the piping.

gauge manifold

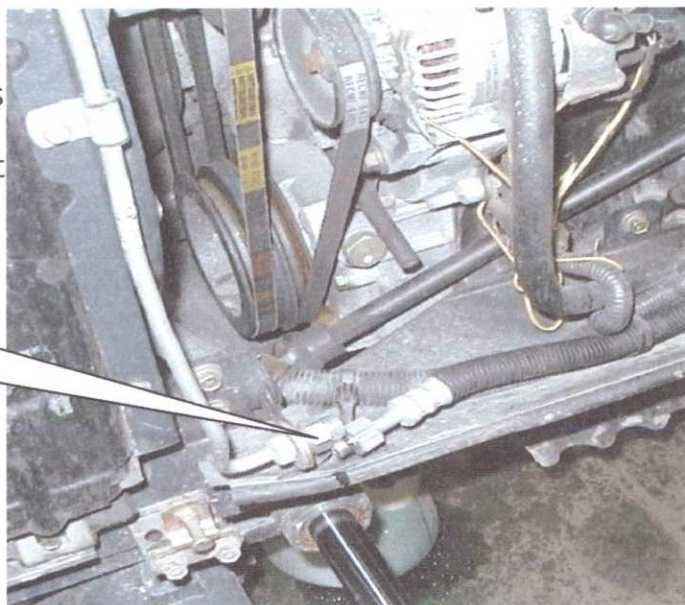
gas
collector



●disconnect the cooler hoses.
(high and low pressure)
note
seal the piping not to enter the dust.

cooler hose
(high pressure side)

left side of the radiator



cooler hose
(low pressure side)

right side of the engine



●open the radiator drain to let the coolant go out.
note

water drain

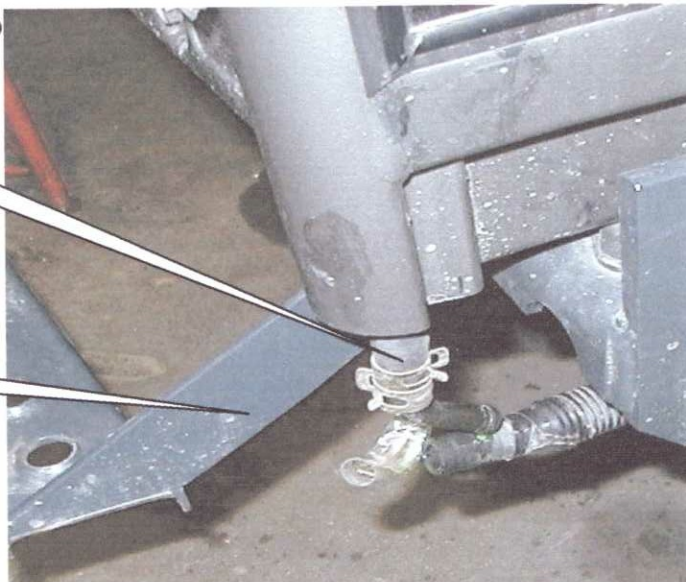


●disconnect the two heater hoses.

heater hose

RH side

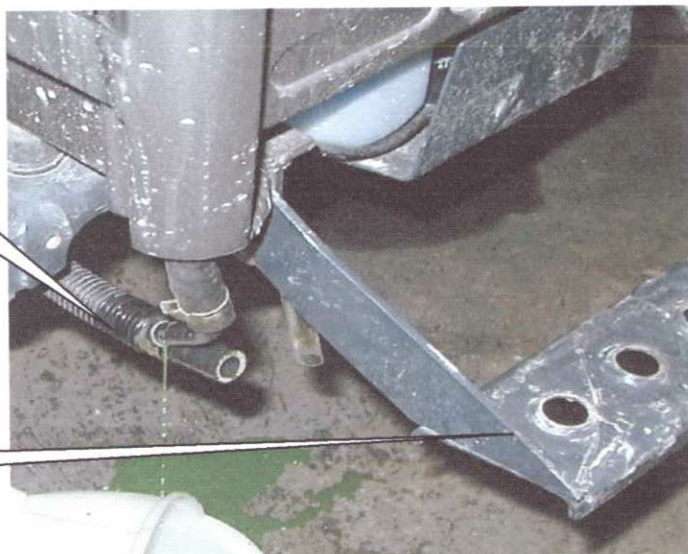
sub step



heater hose

LH side

sub step



3 ENGINE

- engine room

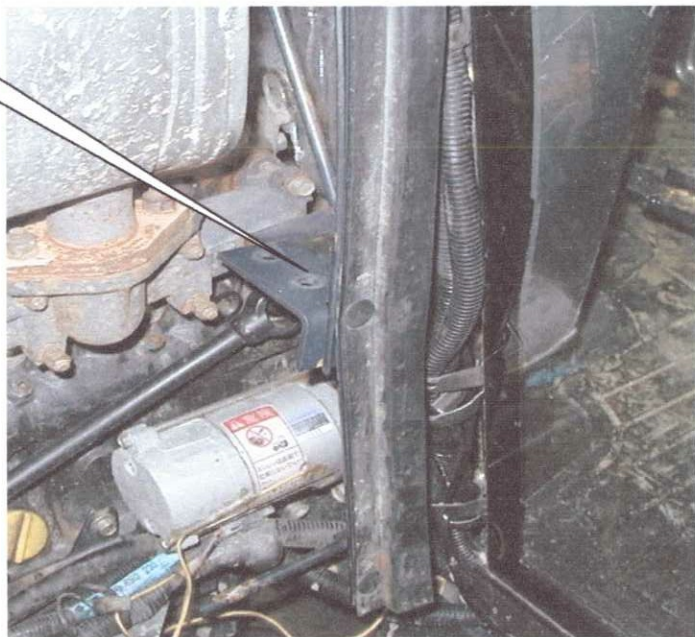
disconnect the negative
terminal of the battery

-
terminal



- remove the engine hood
retaining frame
from cabin
M8 BOLTS x2

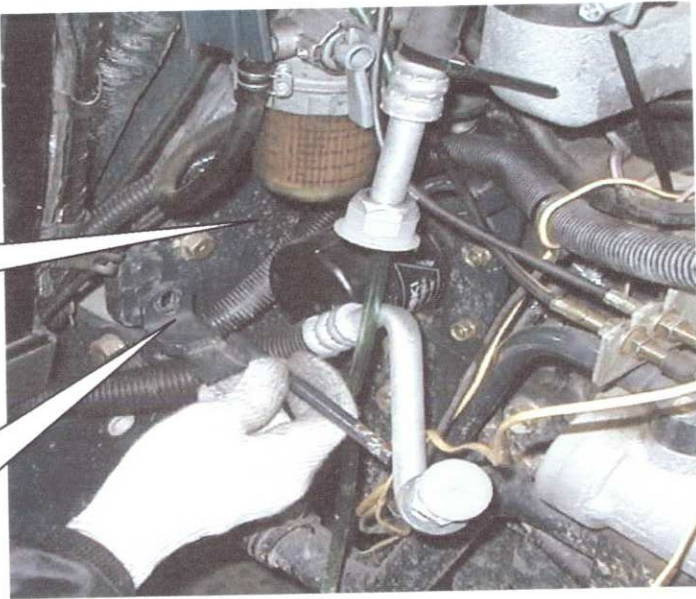
hood
retaining
frame



●remove the retaining bracket RH and LH of the rear of the side cover

engine rear plate

retaining bracket for side cover



engine rear plate

retaining bracket for side cover



- disconnect the wire harness coupler
- fuse box
- relay

fuse box

connector



- remove the fixing bolt from the universal joint of the steering wheel shaft
- M8 BOLT

fixing bolt

steering shaft

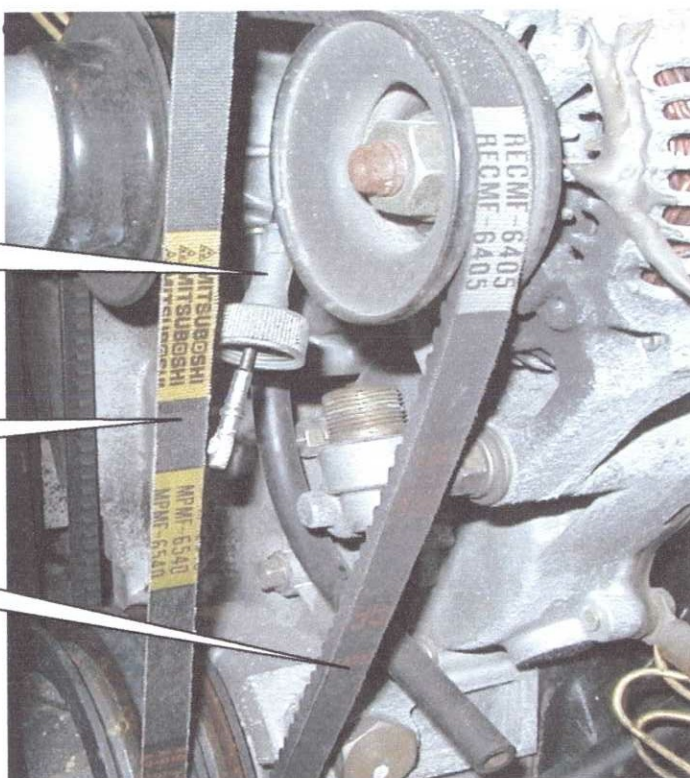


- disconnect the engine revolution cable from the engine

engine
revolution
cable

air-con
belt

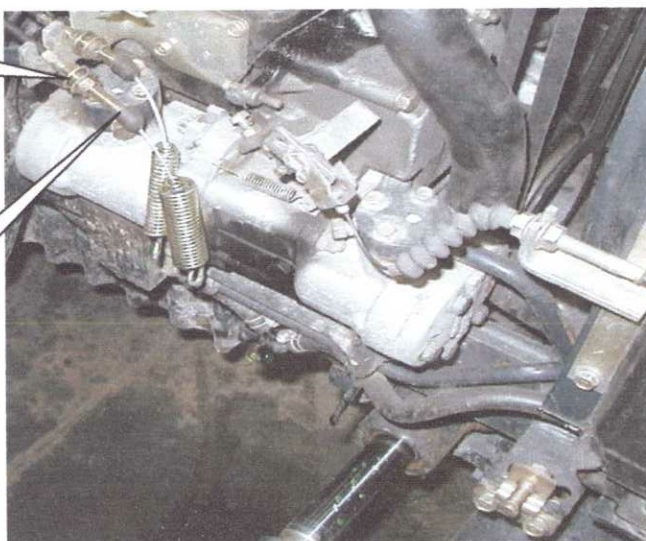
fan belt



- disconnect the two acceleator cables from the engine.

disconne
cting
point

acceleator
cable



4 inside the cabin

- remove the instrument panel
4-M6 SCREW

- disconnect the harness connector and engine revolution cable

instrument panel

panel connector



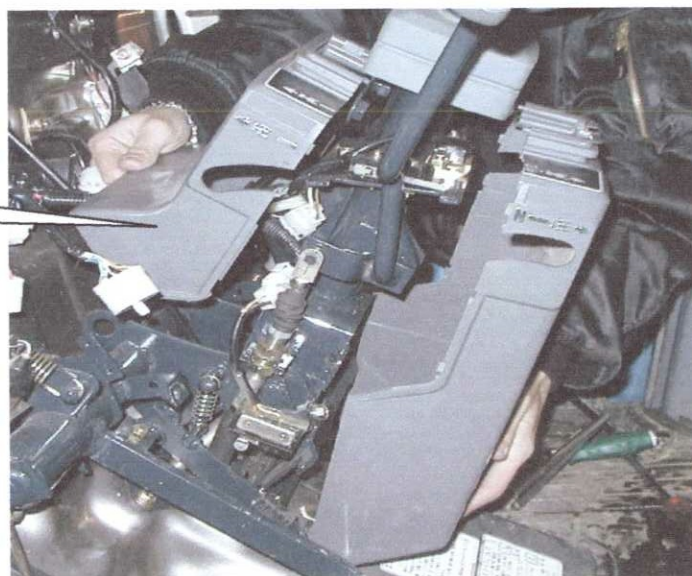
- detach the instrument board and cover

cover

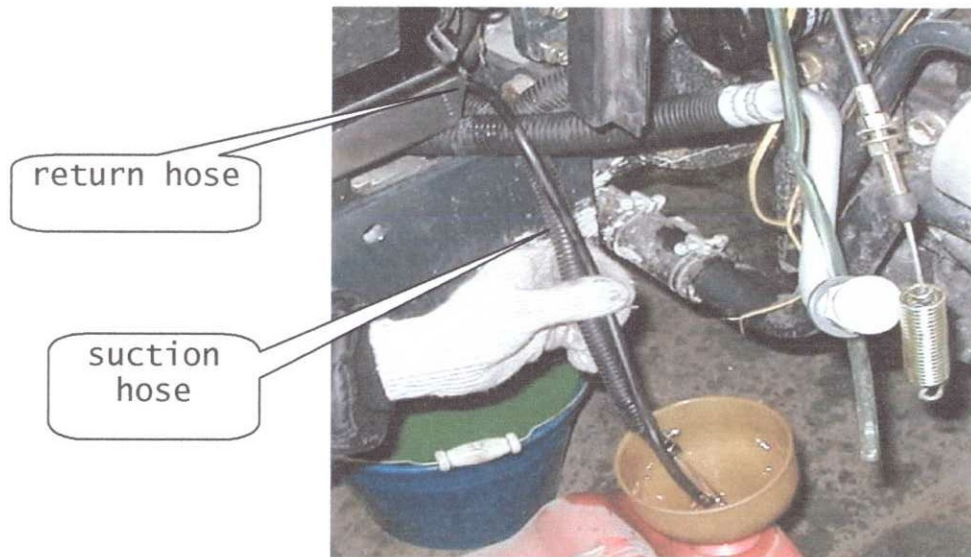


- detach the column cover .
4-M8 SCREW

COLUMN COVER

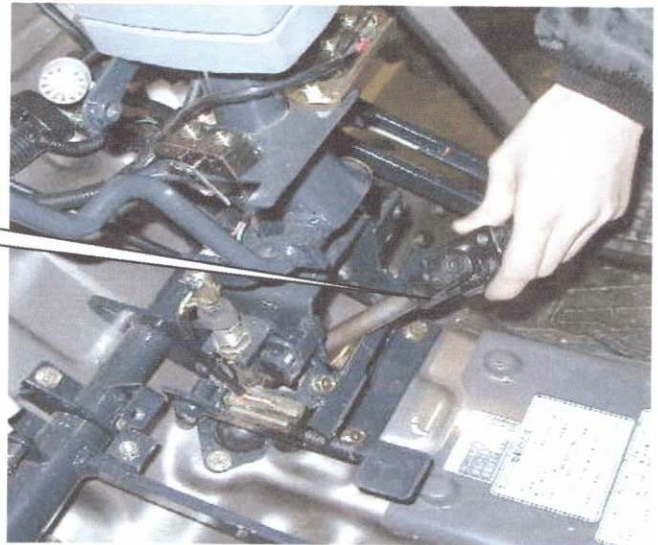


- disconnect the two fuel hoses.
(drain fuel ahead of time through the drain of the fuel tank,or plug the fuel hose to prevent fuel from spilling.)



- remove the steering shaft to the inside of the room.
M8 BOLT

steering shaft



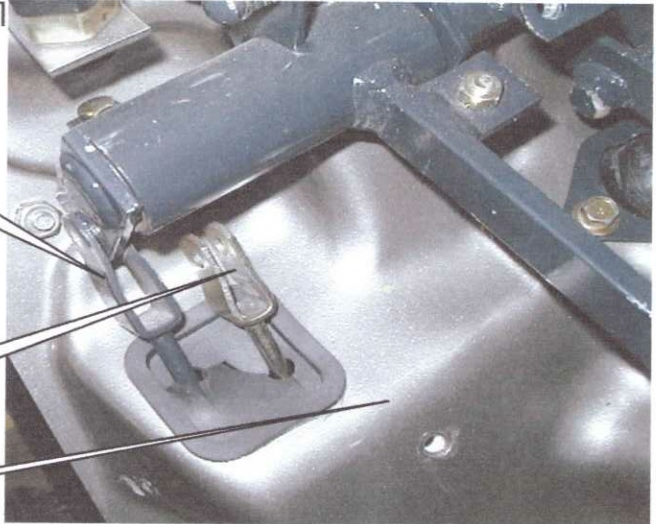
- pull off the pin from the clutch and brake rods at the dash panel

brake LHside

clutch

panel dash

brake Rhside



- remove the slow-return knob.
M6 SCREW
remove the screw and pull
the knob.

slow-return
knob



- detach the cover of the pto and parking
lever.

COVER



- remove the pto shift lever

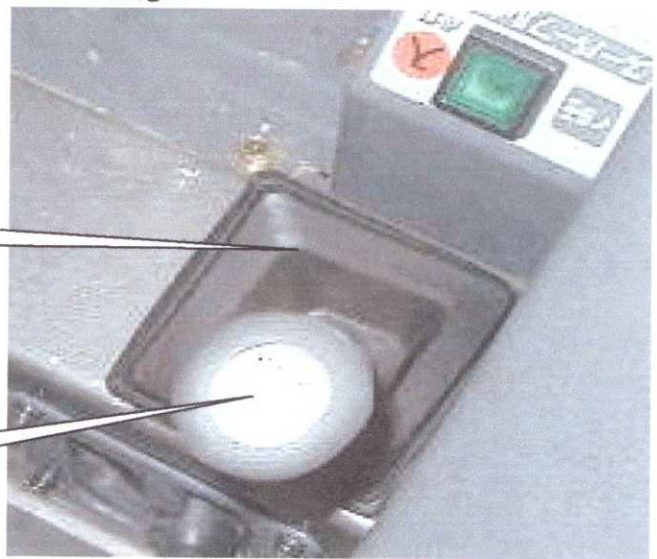
pto shift
lever



- remove the main shift lever and range shift lever.
M8 fix (lever fixing)

lever boot

range lever



main lever

lever boot



- detach the left -hand lever guide.

LH side
lever guide

connectoe



- disconnect the 4wd rod at the end of
L shape-rod inside the lever guide.
or side of the transmission.

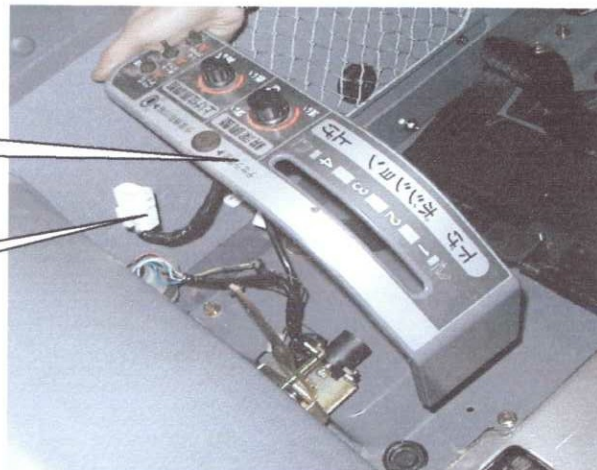
4wd rod



- disconnect the right-hand lever guide.
each lever also should be removed.

RH side
lever guide

connector



5 outside the cabin

- remove the rear wheels



cover
(domestic
type)



cover
(domestic
type)



- remove the difflock pedal.
2-M10 BOLTS

diff-lock pedal

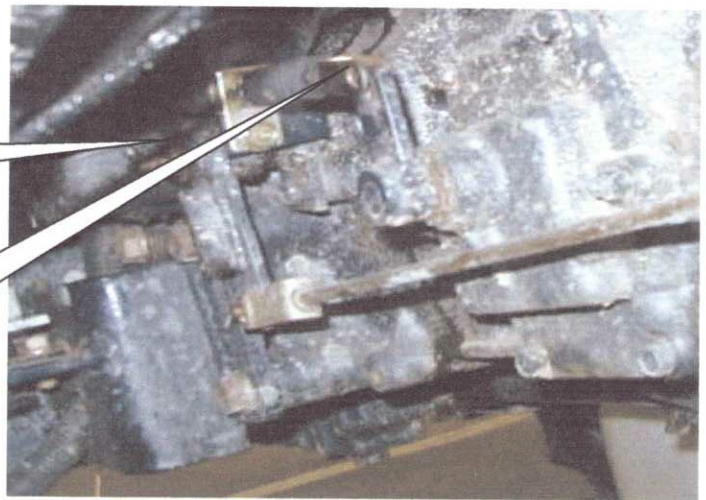
arm



- detach the reverse cable
from the shift arm.

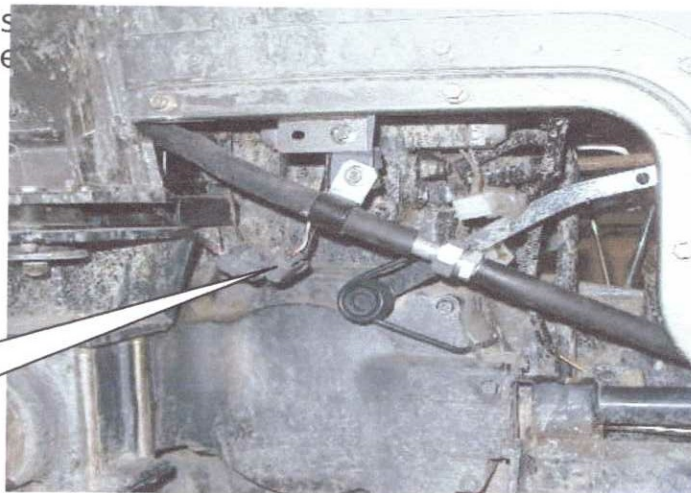
reverse cable

pin

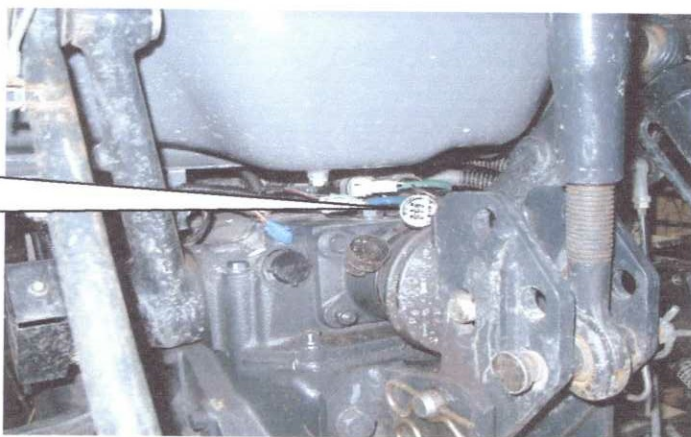


- disconnect the all harness couplers which are connected between cabin and mission.

connector
domestic
type



connectoe
domestic
type

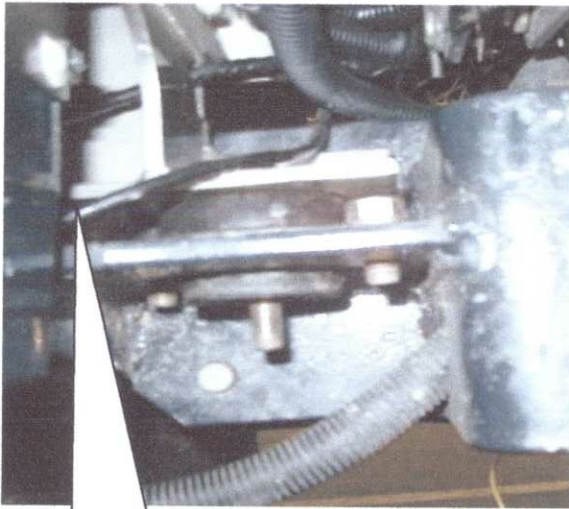


- disconnect the parking brake rod under the floor.

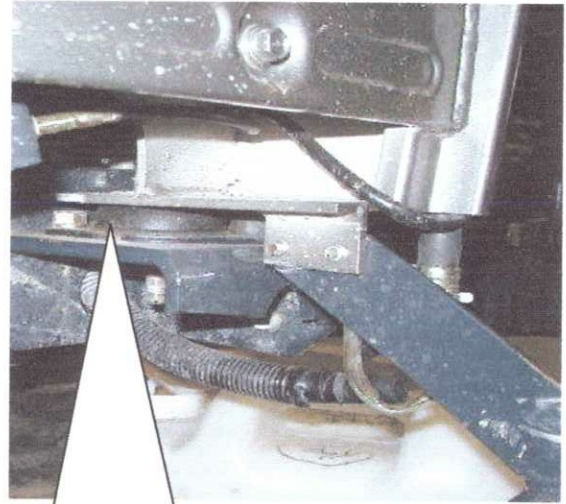
parking brake
lever



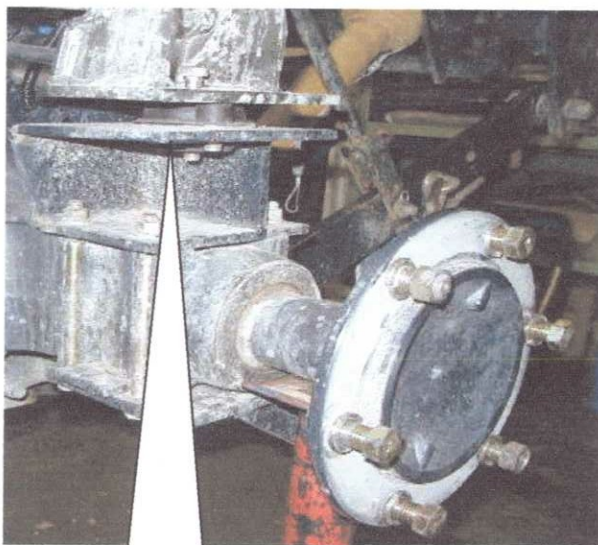
- remove the four nuts at the cabin mount.



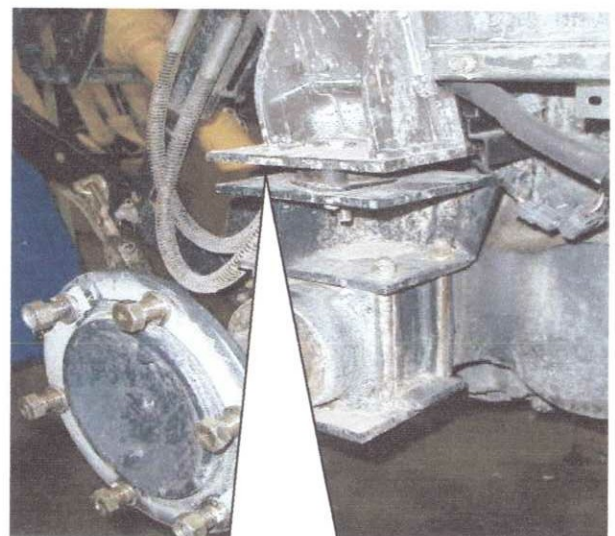
front mount LH
side



front mount RH side



rear mount LH
side



rear mount RH side

- 6 lifting up the cabin
- lifting up the cabin using the four hooks provided on the cabin to paying attention to the following items.

note interference between the mechanical link and air-conditioner piping.

hooks

interference between the floor and the slow-return valve shaft.

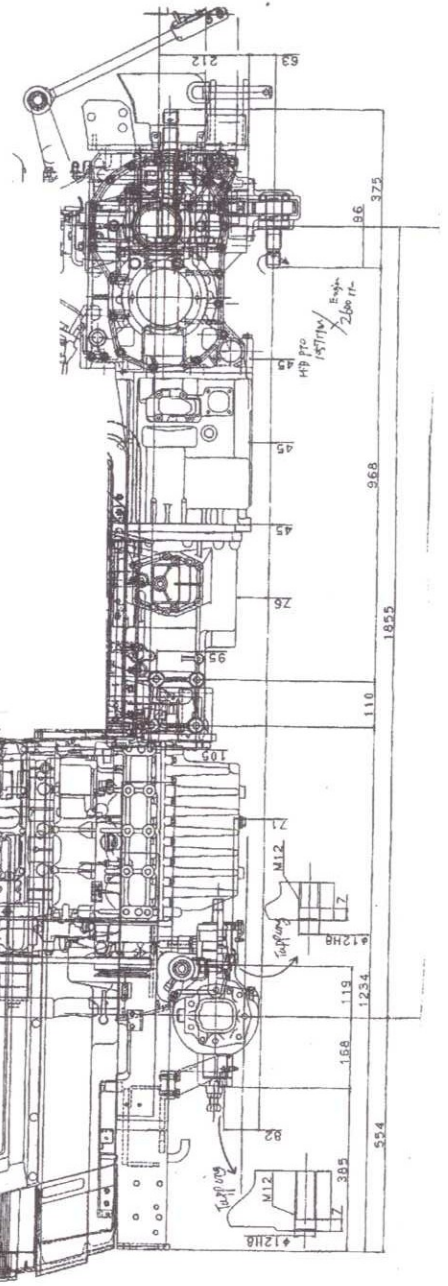
interference between the clutch and brake rod and the instrument panel.

set the pallet or wooden block ,also set the height of the rear mount (adjust the height)

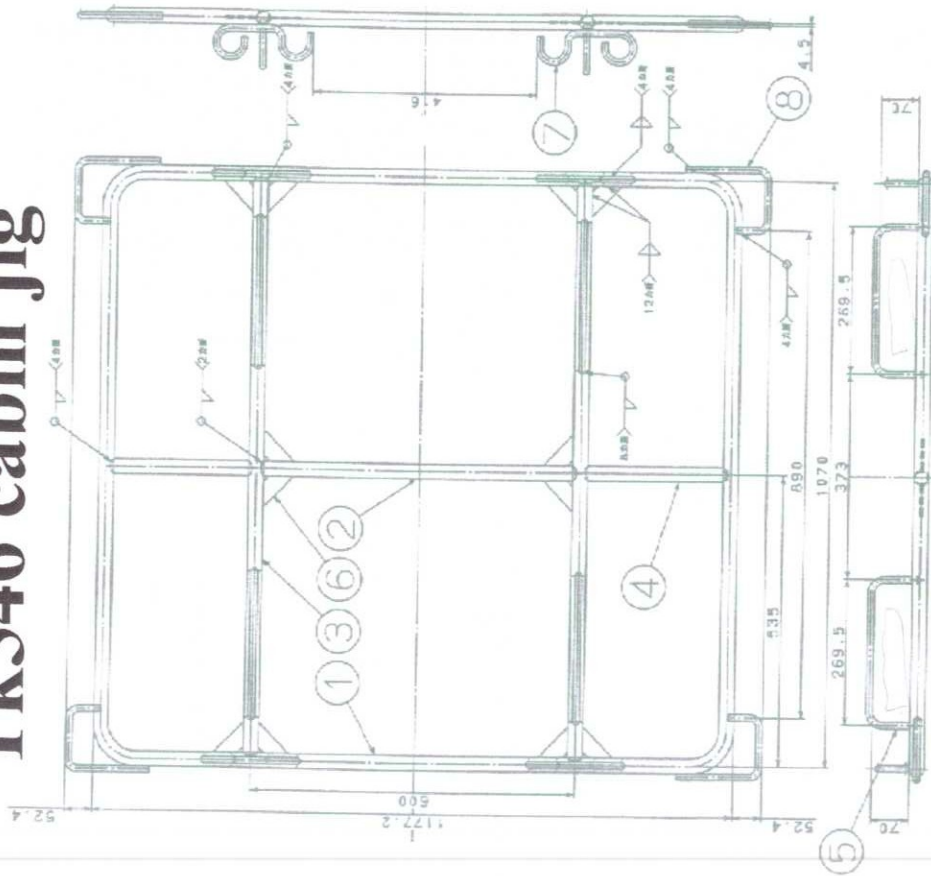


when placing the cabin directly on the floor, place wood blocks under the rear mount of the cabin to prevent the fenders from deforming.

23m



Tk546 cabin jig



L=1MX4
L=1.5MX2

8	11- (C)	1
7	11- (B)	1
6	27- (A)	1
5	11- (A)	1
4	21-7 (22X27X250)	2
3	21-7 (22X27X1054)	2
2	21-7 (22X27X563)	1
1	27-7	1

