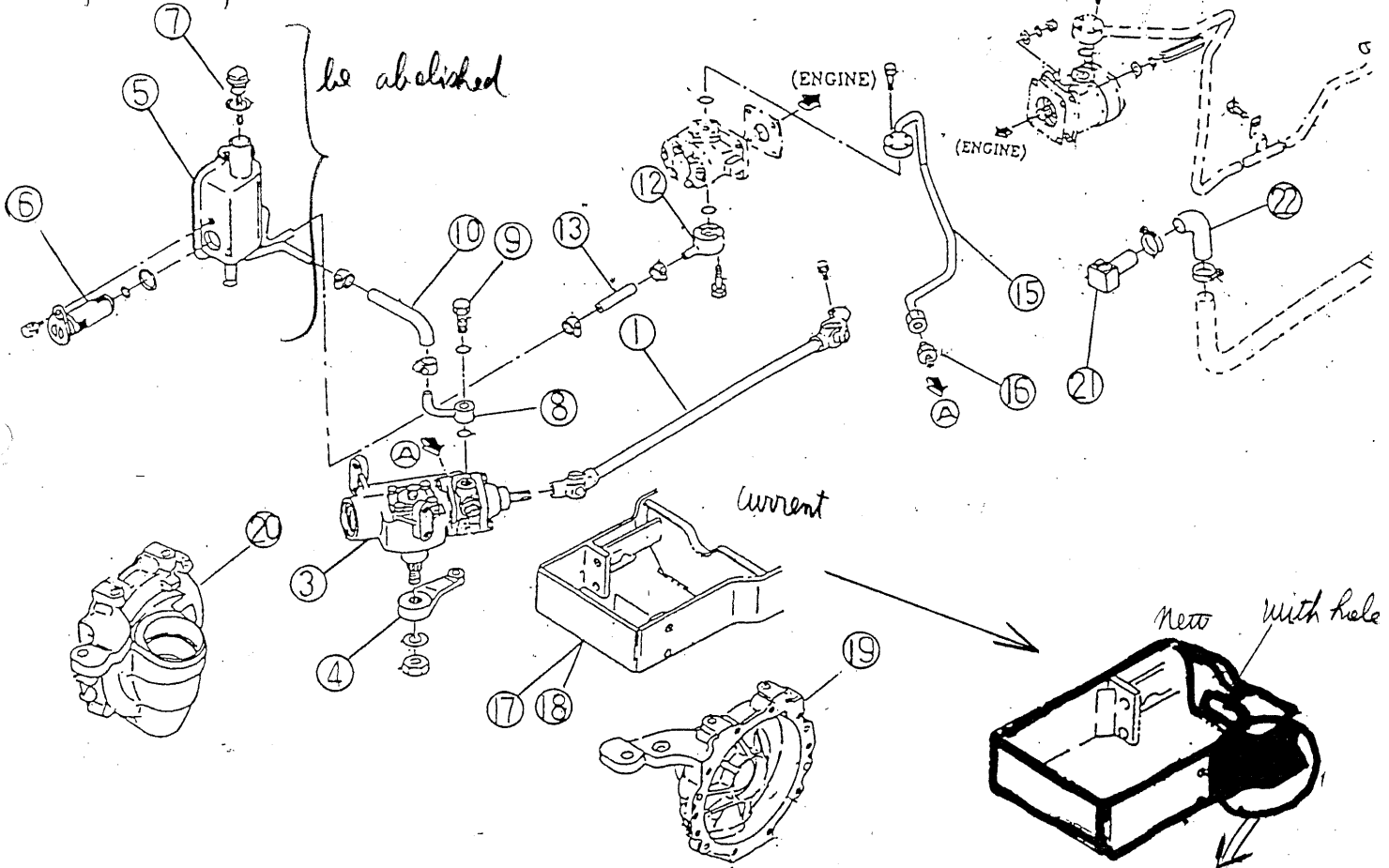
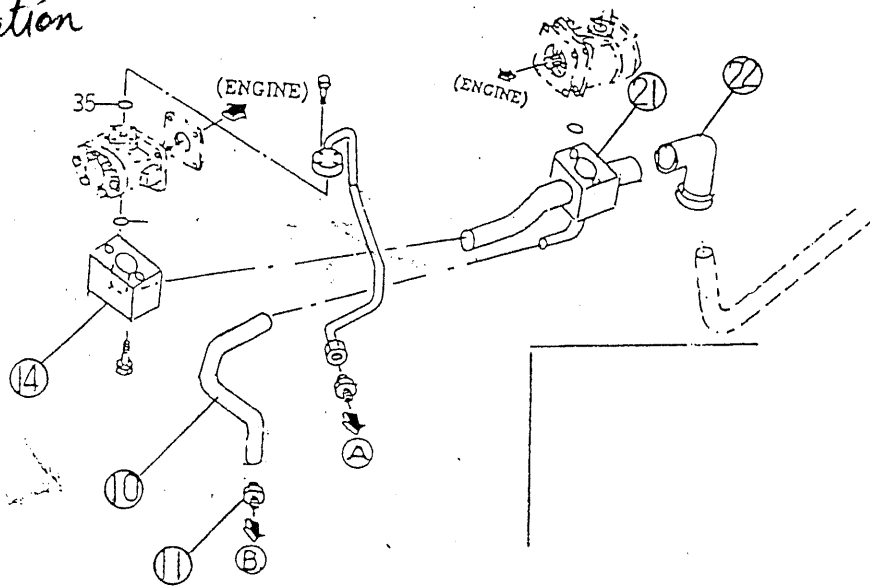


TF325F, TF325FH, TF330FH
MF1230, MF1230FH, MF1235FH

Before modification



after modification



Shape will be changed.

see attached drawing

Value TTR is changed from sliding TTR to rotary TTR (TA/TK TTR).

TF325, TF325H, TF330FH
 MF1230F, MF1230FH, MF1235FH

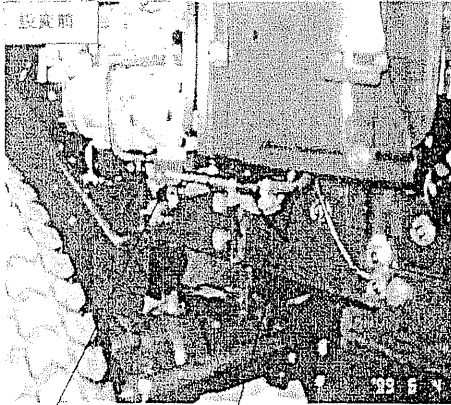
NO.	Current			New				
	part number	MF Number	name	Qty	Part number	MF Number	name	Qty
1	1622-402-210-00	3709849M91	SHAFT/STEERING COMP	1	1622-402-300-00	3607290M91	SHAFT/STEERING COMP	1
2	1614-407-200-20		STEERING/POWER SET	1	1675-407-300-00		STEERING/POWER SET	1
3	1614-407-210-20	3769091M93	STEERING/POWER ASSY	1	1675-407-310-00	3607306M91	STEERING/POWER ASSY	1
4	1614-407-201-00	3709090M1	ARM/PITMAN	1	1675-407-301-00	3607303M1	ARM/PITMAN	1
5	1617-407-200-10	3709378M91	TANK/OIL COMP	1				
6	1614-407-260-00	3769106M91	FILTER/OIL ASSY	1				
7	1518-407-240-00	3702840M91	CAP/OIL ASSY	1				
8	1620-407-200-00	3709650M91	PIPE/OIL COMP	1				
9	1415-505-014-06	3702569M1	BOLT, CONNECTOR	1				
10	1576-408-002-00	3708834M1	HOSE/OIL	1	1678-407-001-00	3607332M1	HOSE/RETURN	1
11					1675-407-220-00	3607301M1	ADAPTER/G1/4B ASSY	1
12	1617-407-220-10	3709389M91	PIPE/OIL COMP	1				
13	1444-408-007-00	3708740M1	HOSE, OIL	1				
14								
15	1617-407-230-00	3709382M91	PIPE/OIL COMP	1	1675-407-001-10	3607298M1	FLANGE	1
16	1426-506-002-00	3708692M1	CONNECTOR	1	1678-407-210-00	3607333M91	PIPE/STEERING COMP	1
17	1622-410-200-10		BRACKET/AXLE COMP/TF325	1	1650-509-290-00	3607297M91	ADAPTER/PF/4 ASSY	1
18	1639-410-200-00	3711061M91	BRACKET/AXLE COMP/MF1230	1	1622-410-200-20		BRACKET/AXLE COMP	1
19	1620-434-001-00	3709675M1	CASE/FAINAL/LH	1	1639-410-200-10	3607295M91	BRACKET/AXLE COMP	1
20	1620-434-002-00	3709676M1	CASE/FAINAL/RH	1	1620-434-003-00	3607285M1	CASE/FAINAL/LH	1
21	1622-508-250-00	3754246M91	PIPE COMP	1	1620-434-004-00	3607286M1	CASE/FAINAL/RH	1
22	1488-510-005-10	3754241M1	JOINT PIPE/A	1	1675-508-280-00	3607327M91	PIPE/SUC/FRONT COMP	1
					1622-508-001-00	3607293M1	HOSE/SUC	1

TF321F, TF321FH
MF1220F, MF1220FH

		Current							
No.	part number	Mf Number	Name	Qty		part number	Mf Number	Name	Qty
1	1620-402-210-00	3709649M91	SHAFT/STEERING COMP	1	→	1620-402-300-00	3607281M91	SHAFT/STEERING COMP	1
2	(1614-407-200-20)		STEERING/POWER SET	1	→	(1675-407-300-00)		STEERING/POWER SET	1
3	1614-407-240-20	3769091M93	STEERING/POWER ASSY	1	→	1675-407-310-00	3607306M91	STEERING/POWER ASSY	1
4	1614-407-201-00	3709090M1	ARM/PITMAN	1	→	1675-407-301-00	3607303M1	ARM/PITMAN	1
5	1614-407-220-20	3709098M91	TANK/OIL COMP	1	x				
6	1614-407-260-00	3769106M91	FILTER/OIL ASSY	1	x				
7	1518-407-240-00	3702840M91	CAP/OIL ASSY	1	x				
8	1620-407-200-00	3709650M91	PIPE/OIL COMP	1	x				
9	1415-505-014-00	3702569M1	BOLT, CONNECTOR	1	x				
10	1576-408-002-00	3708834M1	HOSE/OIL	1	→	1676-407-001-00	3607331M1	HOSE/RETURN	1
11					NOPT	1675-407-220-00	3607301M1	ADAPTER/G1/4B ASSY	1
12	1614-407-240-00	3709103M91	PIPE/OIL COMP	1	x				
13	1444-408-007-00	3708740M1	HOSE, OIL	1	x				
14					NOPT	1675-407-001-10	3607298M1	FLANGE	1
15	1620-407-220-00	3709652M91	PIPE/OIL COMP	1	→	1620-407-210-00	3709652M91	PIPE/STEERING COMP	1
16	1426-506-002-00	3708692M1	CONNECTOR	1	→	1650-509-290-00	3607297M91	ADAPTER/PF/4 ASSY	1
17	1620-410-200-20		BRACKET/AXLE COMP/TF321F	1	→	1620-410-200-30		BRACKET/AXLE COMP	1
18	1637-410-200-20	3711058M93	BRACKET/AXLE COMP/MF1220	1	→	1637-410-200-30	3607294M91	BRACKET/AXLE COMP	1
19	1620-434-001-00	3709675M1	CASE/FAINAL/LH	1	→	1620-434-003-00	3607285M1	CASE/FAINAL/LH	1
20	1620-434-002-00	3709676M1	CASE/FAINAL/RH	1	→	1620-434-004-00	3607286M1	CASE/FAINAL/RH	1
21	1620-508-250-00		PIPE COMP	1	→	1620-508-280-00	3607287M91	PIPE/SUC/FRONT COMP	1

MF1230/1235
TF325/TF330

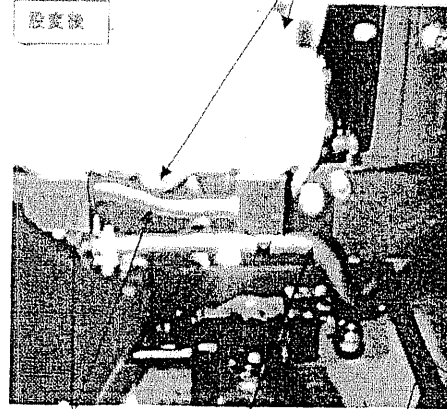
Before modification



Suction pipe for power steering

Power steering oil reservoir

After modification



Delivery pipe for power steering is not changed

Suction (P/S), Return (P/S) and suction (Main) are in one body

Return hose for power steering

Tie rod is moved downward by 8mm
(according to change of final case)
Reason: To prevent interference with relief valve

MF1220
TF321

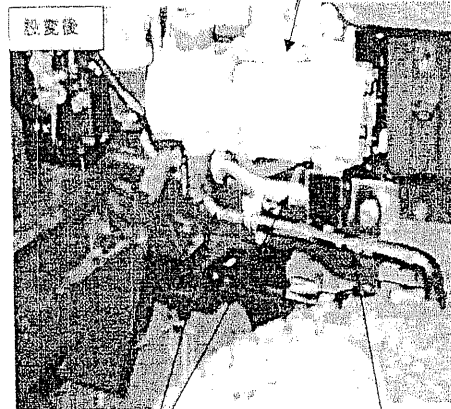
Before modification



Suction pipe for power steering

Power steering oil reservoir

After modification



Delivery pipe for power steering is not changed

Suction (P/S), Return (P/S) and suction (Main) are in one body

Return hose for power steering

TF325/TF330
MF1230/MF1235

Made a modification the shape
of BRACKET/AXLE COMP

Current

