

# Ta

## SCMA48\_54 SXG22E4F chassis

Joint(Universal)system	Fig. 1
Pulley System(Scma48)	Fig. 2
Pulley System(Scma54)	Fig. 3
Case(Bevel)system(Scma48)	Fig. 4
Case(Bevel)system(Scma54)	Fig. 5
Metal System	Fig. 6
Blade System(Scma48)	Fig. 7
Blade System(Scma54)	Fig. 8
Deck(Mower)system(Scma48)	Fig. 9
Deck(Mower)system(Scma54)	Fig. 10
Cover(Discharge)system(Scma48)	Fig. 11
Cover(Discharge)system(Scma54)	Fig. 12
Cover(Belt)system(Scma48)	Fig. 13
Cover(Belt)system(Scma54)	Fig. 14
Wheel(Gauge)system	Fig. 15
Link(Lift)system	Fig. 16
Label	Fig. 17
Case(Bevel)set(Repair)(1/2)	Fig. 18
Plate(Blade Metal/B)(Repair)	Fig. 19
F(Sxg22)kit(Scma48)(Repair)	Fig. 20
F(Sxg22)kit(Scma54)(Repair)	Fig. 21
Component Parts	Fig. 22

## Directions for use of Parts Catalogue

### 1. Applicable model of machines

All component and option parts used for SCMA48,54 Mower are listed in this parts catalogue.

NOTES: SCMA48-SXG22E4BF..... FOR SXG22  
 SCMA54-SXG22E4BF..... FOR SXG22

### 2. Explanation for head paragraph

KEY	PART CODE	DESCRIPTION	S P C	TYPE OF MODEL						I T C	C O L	G R P	REMARKS
				SSM48M	SSM48F	SSM48G	SRM48M	SRM48F	SRM48G				
1	8595-211-001-20	CASE/UPPER	*	L									
1A	8597-201-001-00	CASE/UPPER	*	L									
2	8595-211-002-10	CASE/LOWER	*	L									
3	V523-100-801-00	PIV	*	L									
4	V211-260-803-00	BOLT, SENS	*	L									

- ① KEY shows the location of parts diagramed in the illustration.
- ② Parts numbers begin with `V` and `W` are standard parts of the market.
- ③ `LH` and `RH` on the parts name are described against the moving direction of the machine or are described on the condition how to install parts on the machines.
- ④ SPC : The following symbol classifies parts to be used for machines.
  - `\*` means standard parts.
  - `T` shows that the parts can be installed as optional parts.
  - `R` shows that the parts can be used as applicable parts to replace originally equipped parts.
- ⑤ Upper column : QTY shows the number of parts to be used for one unit of machine.
  - `M` is indicated for parts supplied by a meter long.

`1´ is indicated for parts supplied by liter.

`AR´ is indicated for parts need to be adjusted or regulated.

Lower column : serial number

—229 means serial number up to 229.

230— means serial number 230 and after.

⑥ ITC : Interchangeability

`1´...OLD ← NEW

New parts can be used in place of the old parts.

`2´...OLD → NEW

Old parts can be used in place of the new parts.

`3´...OLD →← NEW

Old parts and new parts can not be replaced each other.

⑦ COL : Color code

Color is signified with color code number for colored parts.

Please see the color list shown in the next page.

⑧ GRP : Parts shown in this column can be replaced by SET parts.

Example : Parts marked ㊸ can be replaced by parts marked ㊹, and ㊺ for ㊻, so the rest follow in the same alphabetical order.

⑨ Remarks

\* Other maker's part code number is shown in this column.

\* When Fig. No. is shown in the Remark column of SET parts or ASSY parts, each of their component parts are listed in said Fig. No.

### 3. Color :

The following colors are used color parts.

COLOR CODE	COLOR	SPRAY TYPE PARTS CODE	PAINTS 4K DRUM PARTS CODE	PAINTS 16K DRUM PARTS CODE
7 F	MIRROR BLACK	1300-954-001-10	1300-954-003-00	1300-954-004-00

NOTE : Color code is signified only for the parts assigned by the maker as color parts.

### 4. Serial Numbers :

For chassies serial number is shown on the LABEL.

Please see



#### 5. Parts Order

- 1) Parts numbers listed in the parts catalogue are all registered in “ISEKI on-line computer”.
- 2) When you order parts, please make sure of correct numbers.
- 3) When substitute parts is available, the part number ordered will be automatically turned to a new part number.
- 4) Please be sure to use “ISEKI GENUINE PARTS”.

Any other similar parts other than ISEKI parts when used may cause a trouble that makes us unable to repair or guarantee the warrant.

**\*\*\* Structure Table of Model \*\*\***

	M O D E L	S S C C M E M E A 4 A 4 4 B 5 B 8 F 4 F S S X X G G 2 2 2 2 F F									
FIG.											
1	*	*									
2	*										
3		*									
4	*										
5		*									
6	*	*									
7	*										
8		*									
9	*										
10		*									
11	*										
12		*									
13	*										
14		*									
15	*	*									
16	*	*									
17	*	*									
18	R	R									
18-A	R	R									
19	R	R									
20	R										
21		R									
22	R	R									

8663-097-130-0A FIG.000 絵目次

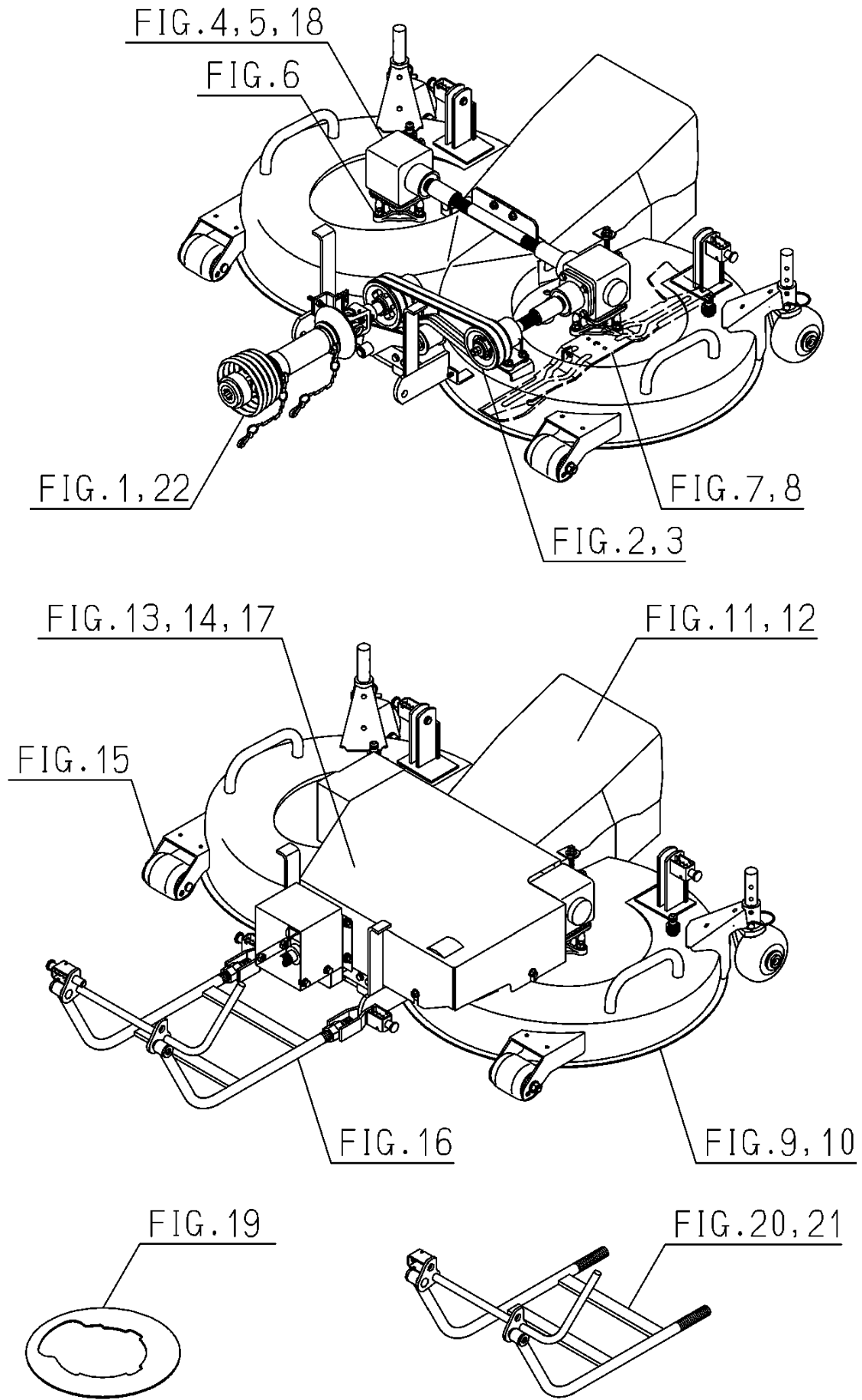
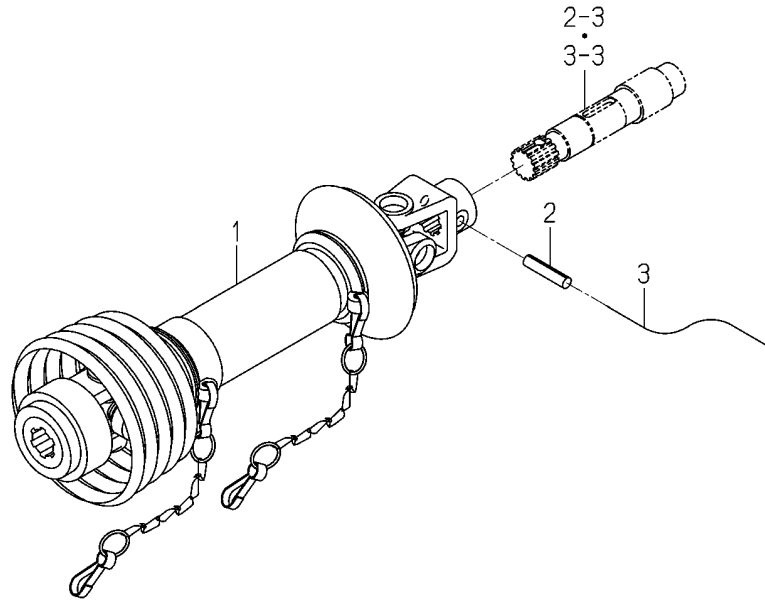
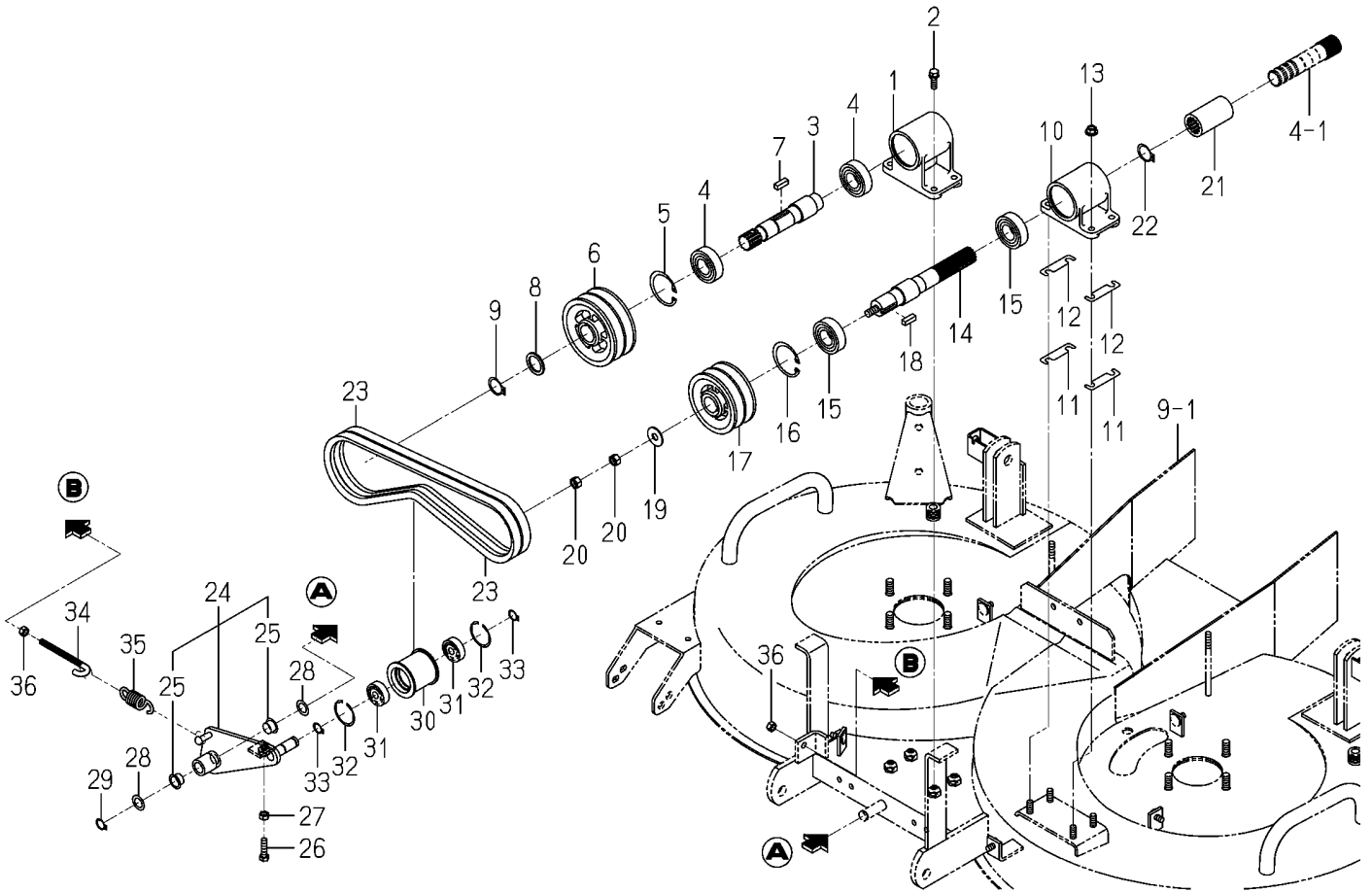


FIG.001 JOINT(UNIVERSAL)SYSTEM



KEY	Part Code	Description	S P C	Type of Model				I T C	C O L	G R P	Remarks
				SCMA48 SXG22F	SCMA54 SXG22F						
1	8663-101-510-00	JOINT/UNIVERSAL SET	*	1	1						022
2	V580-140-804-00	PIN,SPRING/8 X40 W	*	1	1						
3		WIRE	*	1	1						

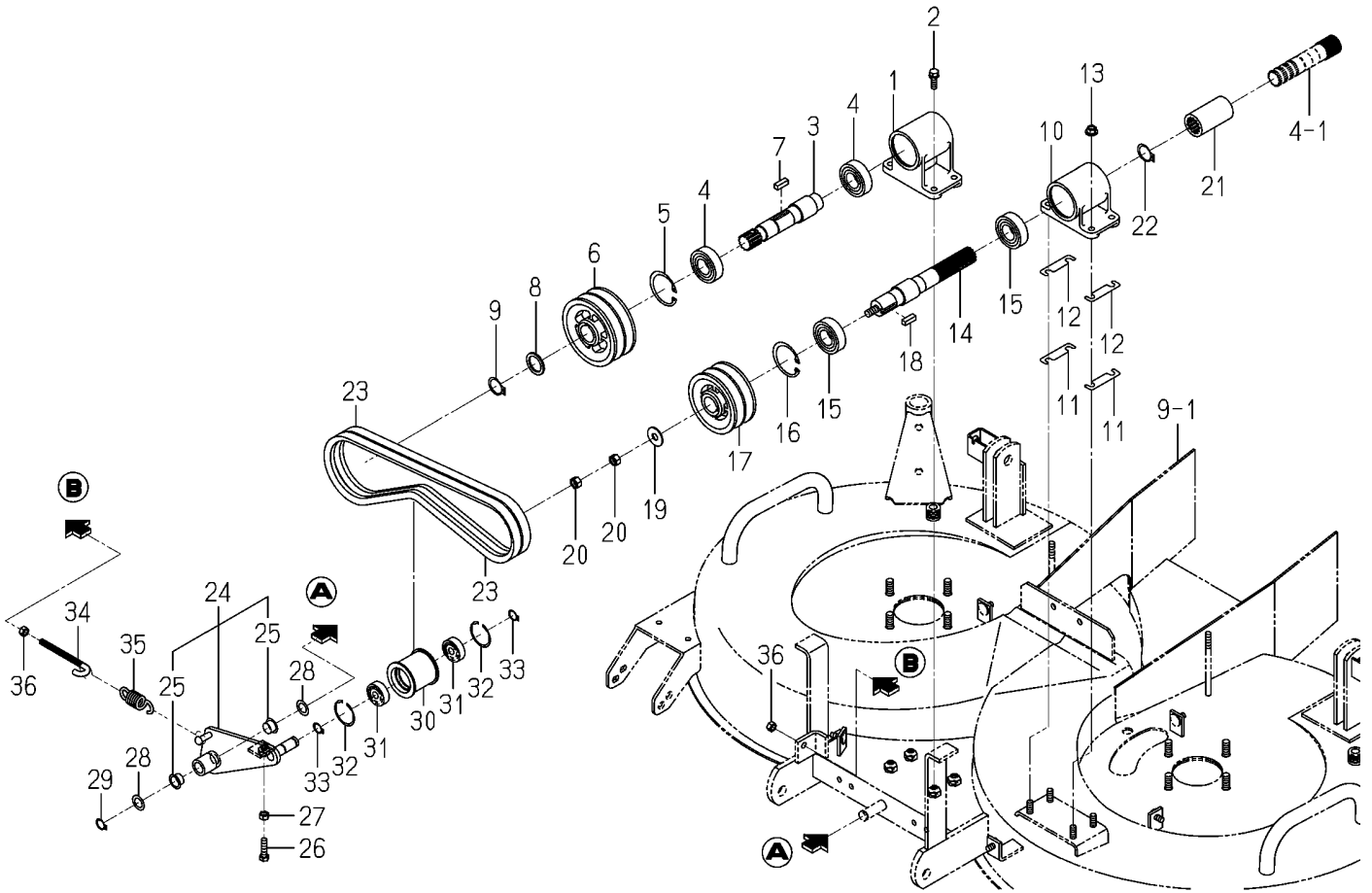
FIG.002 PULLEY SYSTEM(SCMA48)



KEY	Part Code	Description	S P C	Type of Model					I T C	C O L	G R P	Remarks
				SCMA48 SXG22F	SCMA54 SXG22F							
1	8663-201-051-00	METAL/INPUT	*	1								
2	V211-260-802-50	BOLT/S	*	4								
3	8663-201-052-00	SHAFT/INPUT	*	1								
4	V600-150-620-50	BEARING,RB/6205SS	*	2								
5	V705-140-052-00	RING,SNAP/52 C	*	1								
6	8663-201-053-00	PULLEY/V2B102	*	1								
7	8663-201-054-00	KEY/07X07X22	*	1								
8	1415-216-602-00	WASHER/26X35X2	*	1								
9	V704-140-025-00	RING,SNAP/25 C	*	1								
10	8663-201-055-00	METAL/OUTPUT	*	1								
11	8663-201-059-00	SHIM/1.0	*	2								
12	8663-201-061-00	SHIM/0.5	*	2								
13	V363-260-008-00	NUT/WASHER	*	4								
14	8663-201-056-00	SHAFT/48/LH/FRONT	*	1								
15	V600-150-620-50	BEARING,RB/6205SS	*	2								
16	V705-140-052-00	RING,SNAP/52 C	*	1								
17	8663-201-057-10	PULLEY/V2B90	*	1								
18	8663-201-054-00	KEY/07X07X22	*	1								
19	3659-170-003-00	WASHER/11X30X3	*	1								
20	V304-260-010-00	NUT	*	2								
21	1560-220-004-10	COUPRING/21X36X65	*	1								
22	V704-140-025-00	RING,SNAP/25 C	*	1								
23	8663-201-058-10	BELT/VB036	*	2								
24	8663-201-510-30	ARM/TENSION ASSY	*	1								
25	2502-407-001-10	BUSH/15X17X11	*	2								
26	V201-260-803-00	BOLT/M 8X30	*	1								
27	V304-260-008-00	NUT	*	1								
28	3517-205-007-00	WASHER	*	2								
29	V704-140-015-00	RING,SNAP/15 C	*	1								
30	8663-201-062-00	PULLY/TENSION/50X46	*	1								

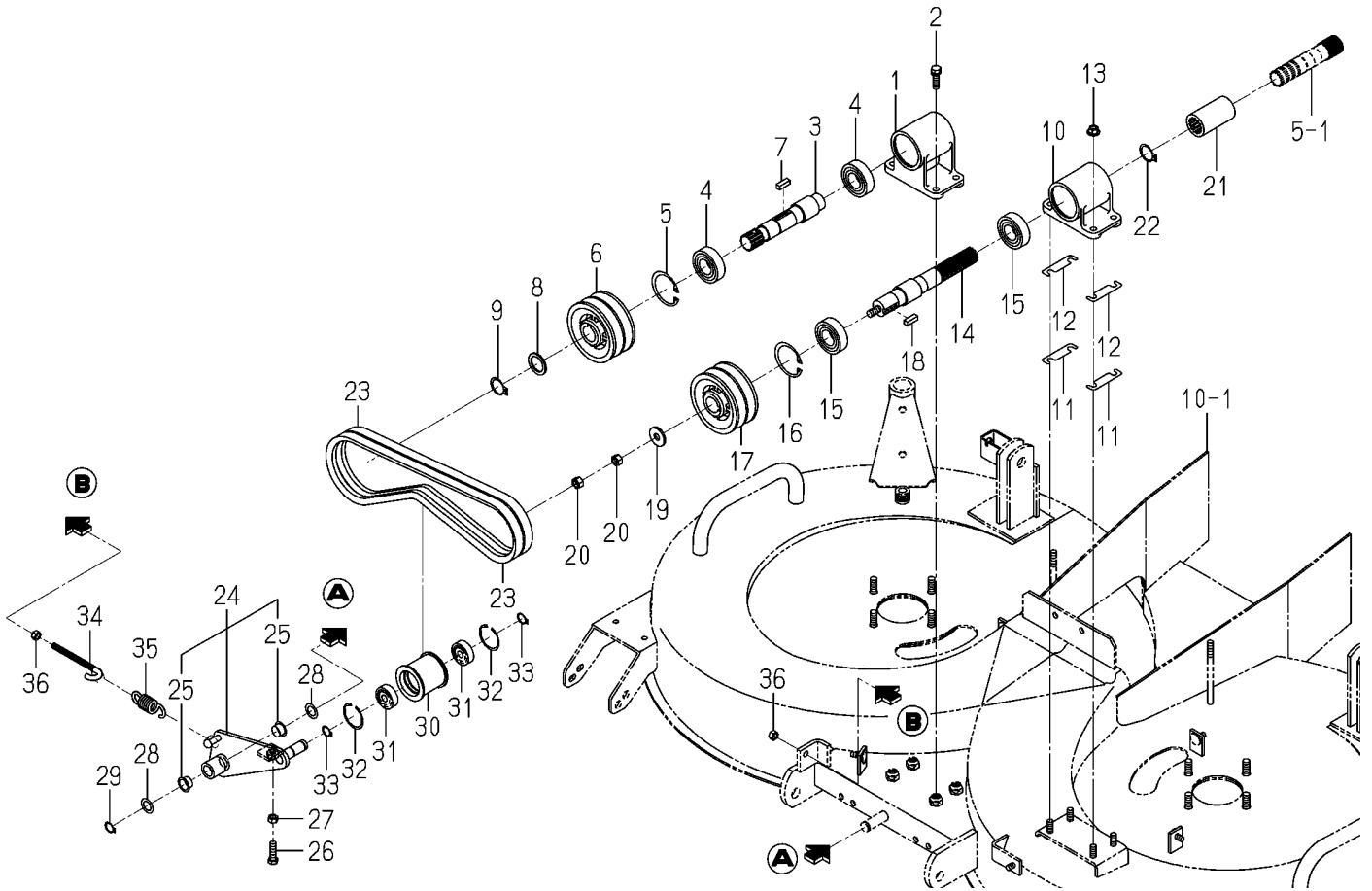


FIG.002 PULLEY SYSTEM(SCMA48)



KEY	Part Code	Description	S P C	Type of Model				I T C	C O L	G R P	Remarks
				SCMA48 SXG22F	SCMA54 SXG22F						
31	V600-350-620-20	BEARING,RB/6202RS	*	2							
32	V705-140-035-00	RING,CIRCLIP	*	2							
33	V704-140-015-00	RING,SNAP/15 C	*	2							
34	3737-341-007-00	ROD,CHAIN TENSION	*	1							
35	1337-401-006-00	SPRING	*	1							
36	V304-260-008-00	NUT	*	2							

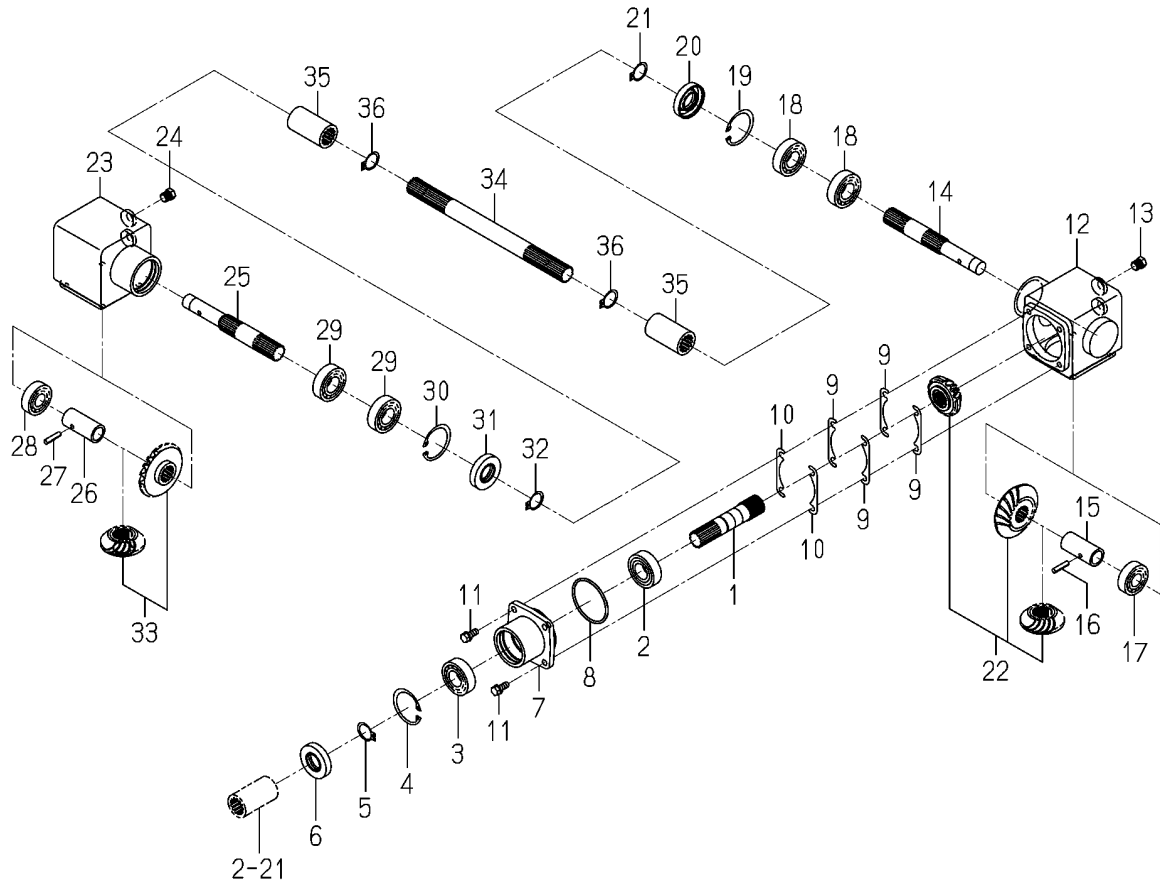
FIG.003 PULLEY SYSTEM(SCMA54)



KEY	Part Code	Description	S P C	Type of Model				I T C	C O L	G R P	Remarks
				SCMA48 SXG22F	SCMA54 SXG22F						
1	8663-201-051-00	METAL/INPUT			1						
2	V211-260-802-50	BOLT/S			4						
3	8663-201-052-00	SHAFT/INPUT			1						
4	V600-150-620-50	BEARING,RB/6205SS			2						
5	V705-140-052-00	RING,SNAP/52 C			1						
6	8665-201-051-00	PULLEY/V2B93			1						
7	8663-201-054-00	KEY/07X07X22			1						
8	1415-216-602-00	WASHER/26X35X2			1						
9	V704-140-025-00	RING,SNAP/25 C			1						
10	8663-201-055-00	METAL/OUTPUT			1						
11	8663-201-059-00	SHIM/1.0			2						
12	8663-201-061-00	SHIM/0.5			2						
13	V363-260-008-00	NUT/WASHER			4						
14	8663-201-056-00	SHAFT/48/LH/FRONT			1						
15	V600-150-620-50	BEARING,RB/6205SS			2						
16	V705-140-052-00	RING,SNAP/52 C			1						
17	8663-201-057-10	PULLEY/V2B90			1						
18	8663-201-054-00	KEY/07X07X22			1						
19	3659-170-003-00	WASHER/11X30X3			1						
20	V304-260-010-00	NUT			2						
21	1560-220-004-10	COUPRING/21X36X65			1						
22	V704-140-025-00	RING,SNAP/25 C			1						
23	8665-201-052-10	BELT/VB038			2						
24	8663-201-510-30	ARM/TENSION ASSY			1						
25	2502-407-001-10	BUSH/15X17X11			2						
26	V201-260-803-00	BOLT/M 8X30			1						
27	V304-260-008-00	NUT			1						
28	3517-205-007-00	WASHER			2						
29	V704-140-015-00	RING,SNAP/15 C			1						
30	8663-201-062-00	PULLY/TENSION/50X46			1						

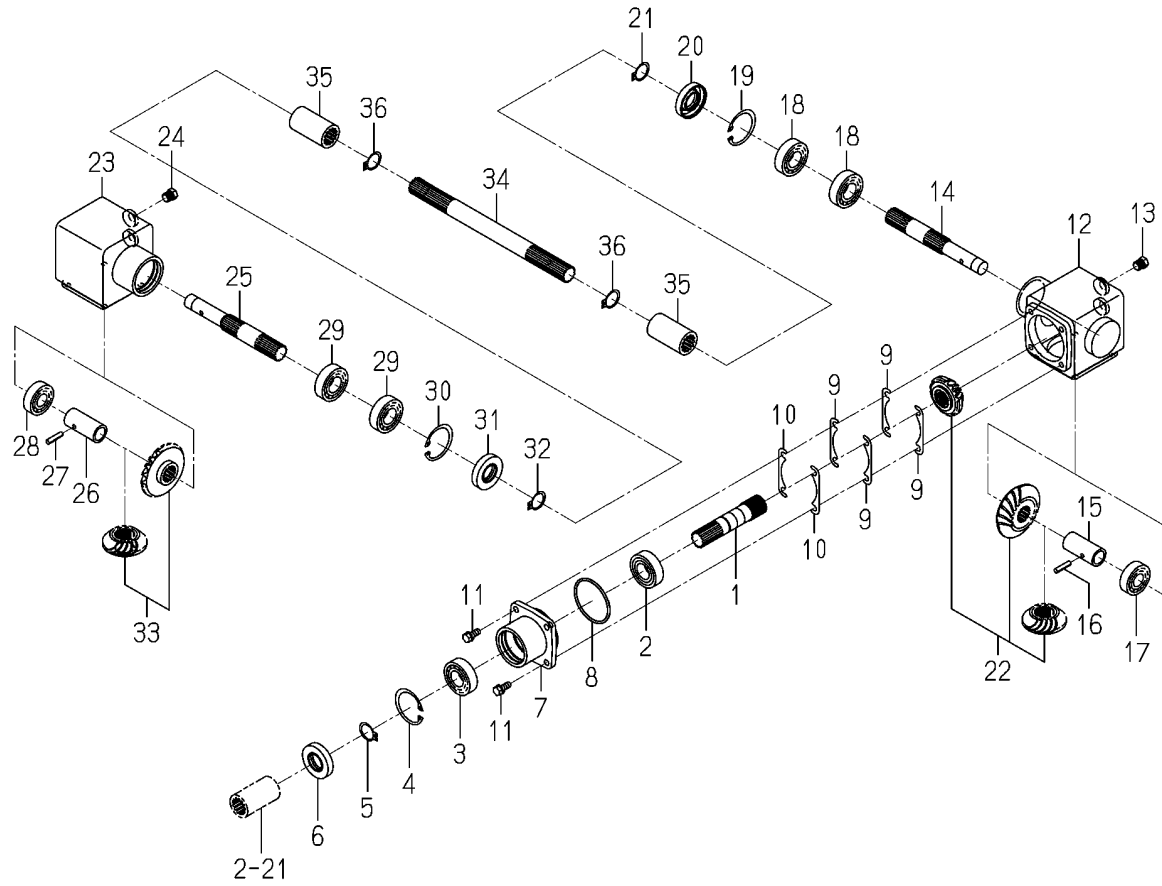


FIG.004 CASE(BEVEL)SYSTEM(SCMA48)



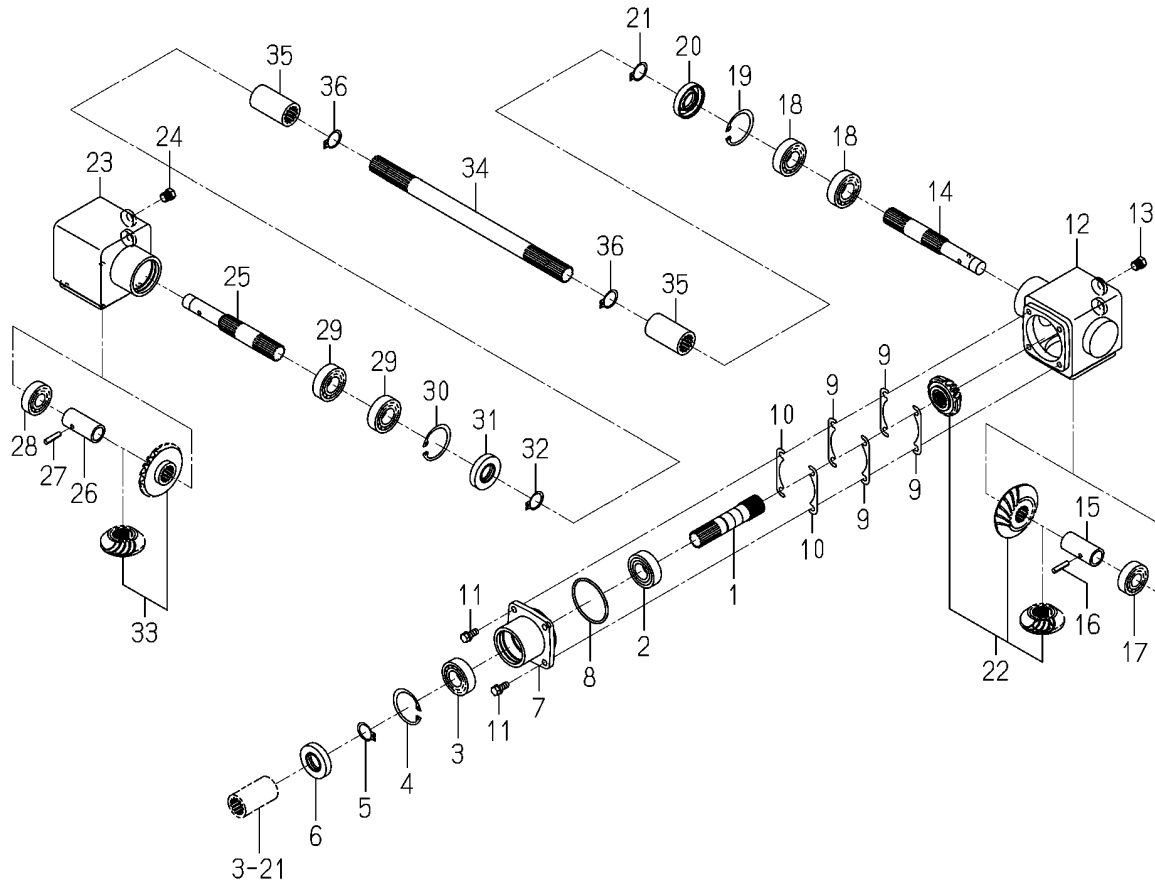
KEY	Part Code	Description	S P C	Type of Model				I T C	C O L	G R P	Remarks
				SCMA48 SXG22F	SCMA54 SXG22F						
1	8663-202-051-00	SHAFT/LH/REAR	*	1							
2	1594-221-001-00	BEARING/BALL 6205SH2	*	1							
3	V600-110-620-50	BEARING,RB/6205	*	1							
4	V705-140-052-00	RING,SNAP/52 C	*	1							
5	V704-140-025-00	RING,SNAP/25 C	*	1							
6	V744-125-521-00	SEAL,OIL/TC255210	*	1							
7	8663-202-052-10	METAL/BEVELCASE	*	1							
8	V721-103-106-50	O-RING/G65	*	1							
9	8663-202-055-00	SHIM/0.1	*	4							
10	8663-202-056-00	SHIM/0.2	*	2							
11	V211-260-802-00	BOLT/S	*	4							
12	8663-202-057-10	CASE/BEVEL/LH	*	1							
13	7955-201-026-00	PLUG,DRAIN (1/4)	*	2							
14	8663-202-058-00	SHAFT/CASE	*	1							
15	8663-202-059-00	HUB/SPACER	*	1							
16	V580-140-602-80	PIN,SPRING/6 X28 W	*	1							
17	V600-110-620-40	BEARING,RB/6204	*	1							
18	V600-110-620-50	BEARING,RB/6205	*	2							
19	V705-140-052-00	RING,SNAP/52 C	*	1							
20	V744-125-521-00	SEAL,OIL/TC255210	*	1							
21	V704-140-025-00	RING,SNAP/25 C	*	1							
22	8663-202-610-00	GEAR/B/21-25-21 SET	*	1							
23	8663-202-062-10	CASE/BEVEL/RH	*	1					7F		
24	7955-201-026-00	PLUG,DRAIN (1/4)	*	2							
25	8663-202-058-00	SHAFT/CASE	*	1							
26	8663-202-059-00	HUB/SPACER	*	1							
27	V580-140-602-80	PIN,SPRING/6 X28 W	*	1							
28	V600-110-620-40	BEARING,RB/6204	*	1							
29	V600-110-620-50	BEARING,RB/6205	*	2							
30	V705-140-052-00	RING,SNAP/52 C	*	1							

FIG.004 CASE(BEVEL)SYSTEM(SCMA48)



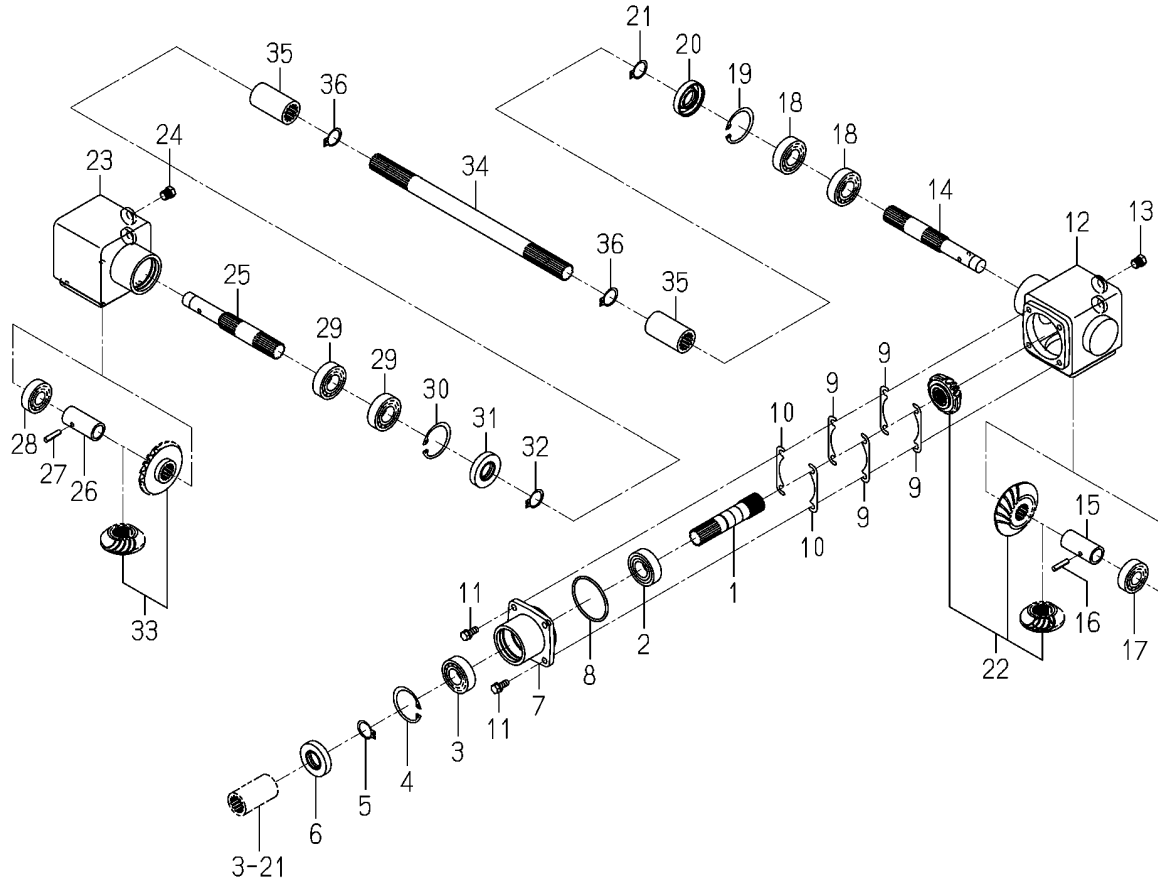
KEY	Part Code	Description	S P C	Type of Model					I T C	C O L	G R P	Remarks
				SCMA48 SXG22F	SCMA54 SXG22F							
31	V744-125-521-00	SEAL,OIL/TC255210	*	1								
32	V704-140-025-00	RING,SNAP/25 C	*	1								
33	8663-202-620-00	GEAR/BEVEL/25-2 SET	*	1								
34	8663-202-061-00	SHAFT/CENTER/48	*	1								
35	1560-220-004-10	COUPRING/21X36X65	*	2								
36	V704-140-025-00	RING,SNAP/25 C	*	2								

FIG.005 CASE(BEVEL)SYSTEM(SCMA54)



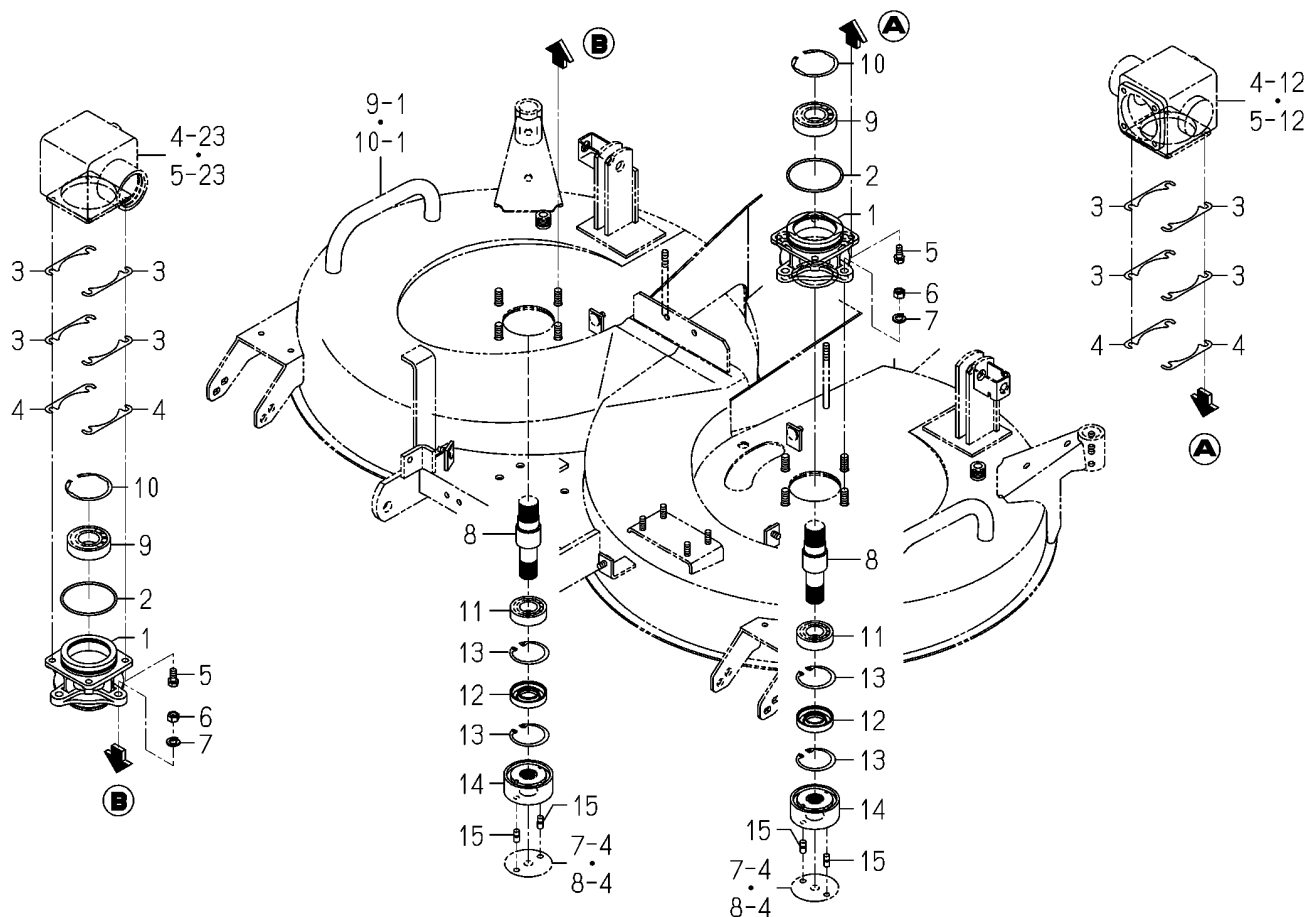
KEY	Part Code	Description	S P C	Type of Model				I T C	C O L	G R P	Remarks
				SCMA48 SXG22F	SCMA54 SXG22F						
1	8663-202-051-00	SHAFT/LH/REAR			1						
2	1594-221-001-00	BEARING/BALL 6205SH2			1						
3	V600-110-620-50	BEARING,RB/6205			1						
4	V705-140-052-00	RING,SNAP/52 C			1						
5	V704-140-025-00	RING,SNAP/25 C			1						
6	V744-125-521-00	SEAL,OIL/TC255210			1						
7	8663-202-052-10	METAL/BEVELCASE			1						
8	V721-103-106-50	O-RING/G65			1						
9	8663-202-055-00	SHIM/0.1			4						
10	8663-202-056-00	SHIM/0.2			2						
11	V211-260-802-00	BOLT/S			4						
12	8663-202-057-10	CASE/BEVEL/LH			1						
13	7955-201-026-00	PLUG,DRAIN (1/4)			2						
14	8663-202-058-00	SHAFT/CASE			1						
15	8663-202-059-00	HUB/SPACER			1						
16	V580-140-602-80	PIN,SPRING/6 X28 W			1						
17	V600-110-620-40	BEARING,RB/6204			1						
18	V600-110-620-50	BEARING,RB/6205			2						
19	V705-140-052-00	RING,SNAP/52 C			1						
20	V744-125-521-00	SEAL,OIL/TC255210			1						
21	V704-140-025-00	RING,SNAP/25 C			1						
22	8663-202-610-00	GEAR/B/21-25-21 SET			1						
23	8663-202-062-10	CASE/BEVEL/RH			1				7F		
24	7955-201-026-00	PLUG,DRAIN (1/4)			2						
25	8663-202-058-00	SHAFT/CASE			1						
26	8663-202-059-00	HUB/SPACER			1						
27	V580-140-602-80	PIN,SPRING/6 X28 W			1						
28	V600-110-620-40	BEARING,RB/6204			1						
29	V600-110-620-50	BEARING,RB/6205			2						
30	V705-140-052-00	RING,SNAP/52 C			1						

FIG.005 CASE(BEVEL)SYSTEM(SCMA54)



KEY	Part Code	Description	S P C	Type of Model					I T C	C O L	G R P	Remarks
				SCMA48 SXG22F	SCMA54 SXG22F							
31	V744-125-521-00	SEAL,OIL/TC255210			1							
32	V704-140-025-00	RING,SNAP/25 C			1							
33	8663-202-620-00	GEAR/BEVEL/25-2 SET			1							
34	8665-202-051-00	SHAFT/CENTER/54			1							
35	1560-220-004-10	COUPRING/21X36X65			2							
36	V704-140-025-00	RING,SNAP/25 C			2							

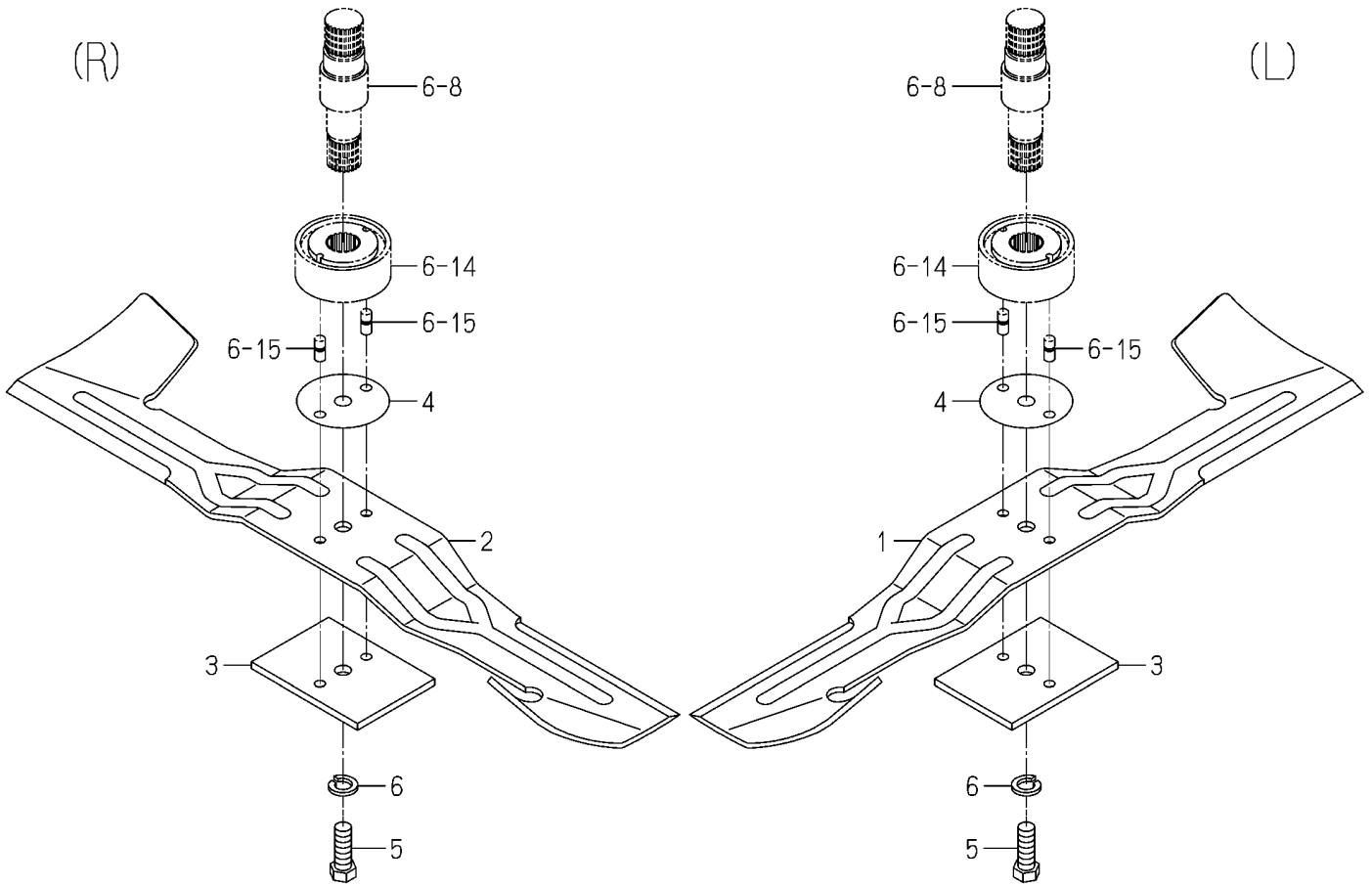
FIG.006 METAL SYSTEM



KEY	Part Code	Description	S P C	Type of Model				I T C	C O L	G R P	Remarks
				SCMA48 SXG22F	SCMA54 SXG22F						
1	8663-301-051-20	METAL/BLADE/B	*	2	2						
2	V721-103-107-50	O-RING/G75	*	2	2						
3	8595-201-021-00	SHIM/0.1	*	8	8						
4	8595-201-022-00	SHIM/0.2	*	8	8						
5	V211-260-802-00	BOLT/S	*	8	8						
6	V304-260-010-00	NUT	*	8	8						
7	V401-160-010-00	WASHER,SP/M10	*	8	8						
8	8663-301-052-10	SHAFT/BLADE/B	*	2	2						
9	V600-110-620-60	BEARING,RB/6206	*	2	2						
10	V707-140-062-00	RING/SNAP	*	2	2						
11	V600-110-620-50	BEARING,RB/6205	*	2	2						
12	V744-125-521-00	SEAL,OIL/TC255210	*	2	2						
13	V705-140-052-00	RING,SNAP/52 C	*	4	4						
14	8663-301-053-10	COLLAR/BLADE	*	2	2						
15	8663-301-004-00	PIN/08X18	*	4	4						

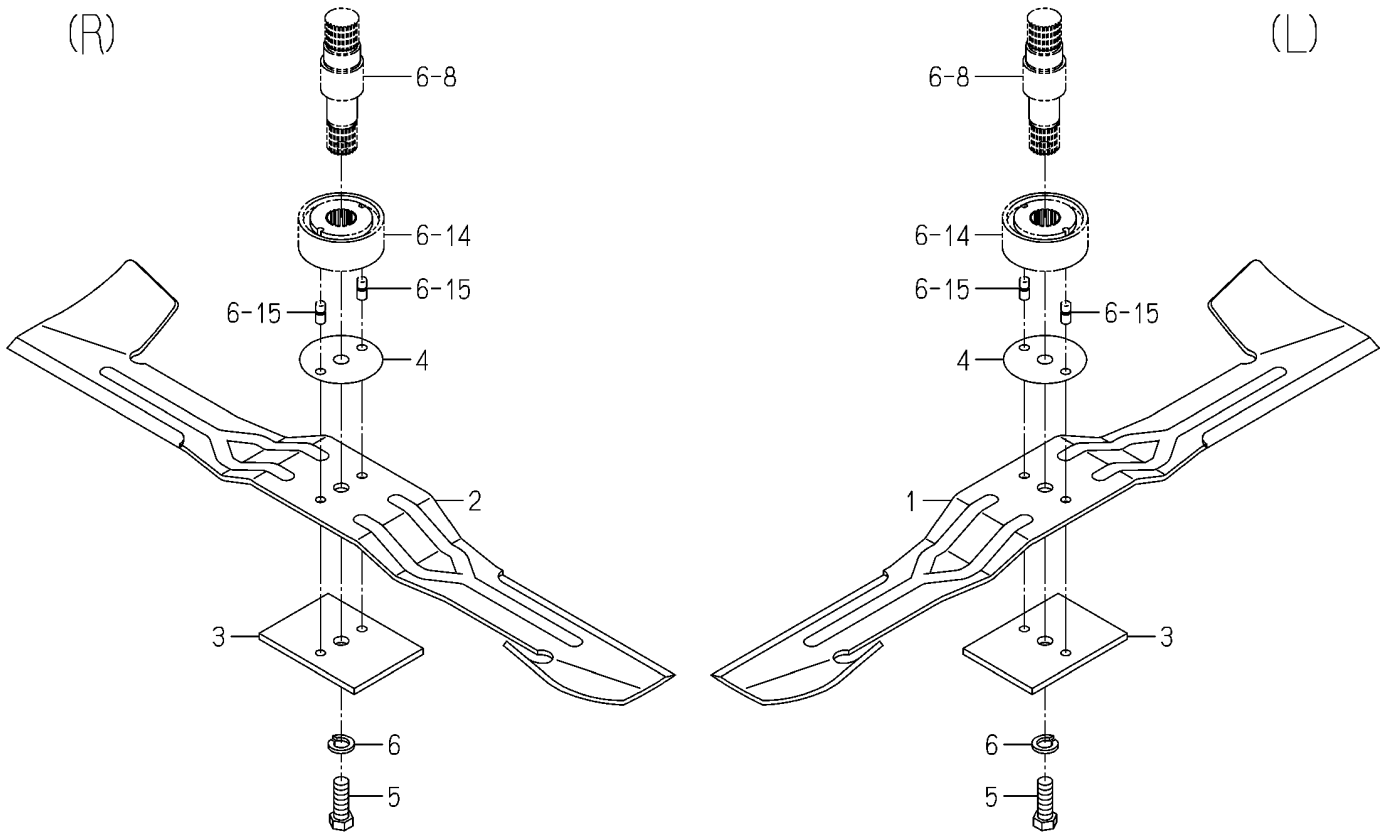


FIG.007 BLADE SYSTEM(SCMA48)



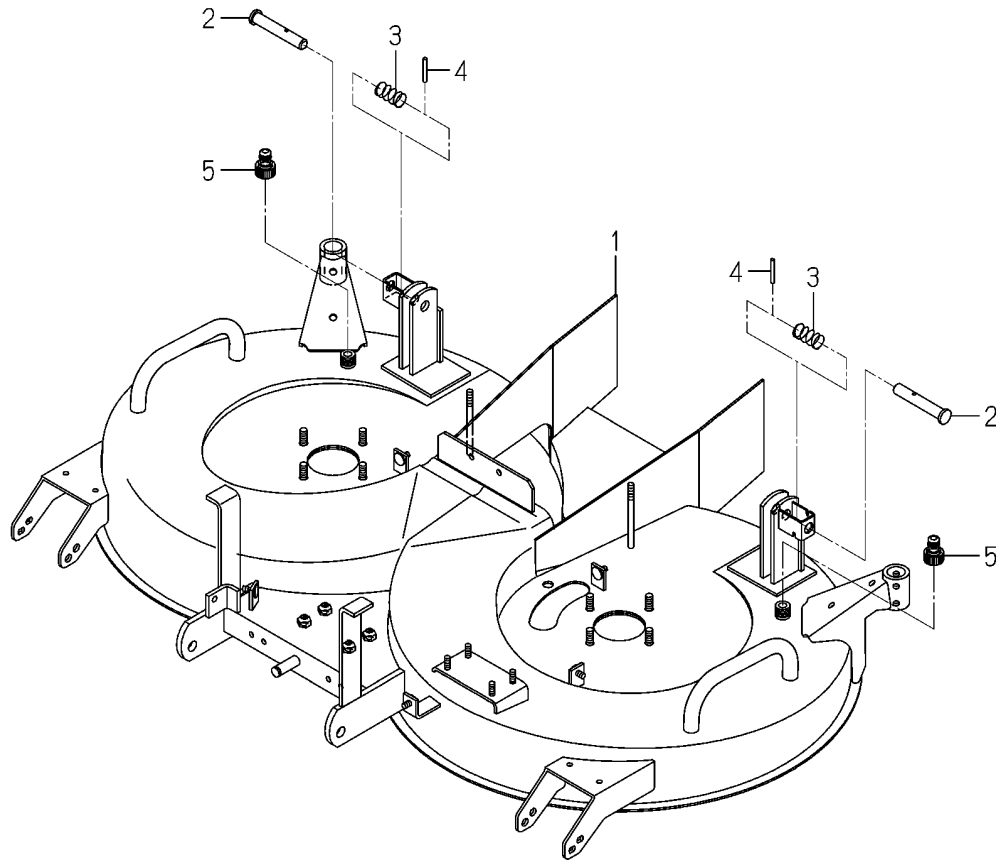
KEY	Part Code	Description	S P C	Type of Model				I T C	C O L	G R P	Remarks
				SCMA48 SXG22F	SCMA54 SXG22F						
1	8663-306-001-10	BLADE/60X640/C	*	1							
2	8663-306-002-10	BLADE/60X640/D	*	1							
3	8663-306-210-10	PLATE/I/80X110 COMP	*	2							
4	8663-306-004-00	SHIM/1.2	*	2							
5	V203-361-203-50	BOLT	*	2							
6	V401-160-012-00	WASHER,SP/M12	*	2							

FIG.008 BLADE SYSTEM(SCMA54)



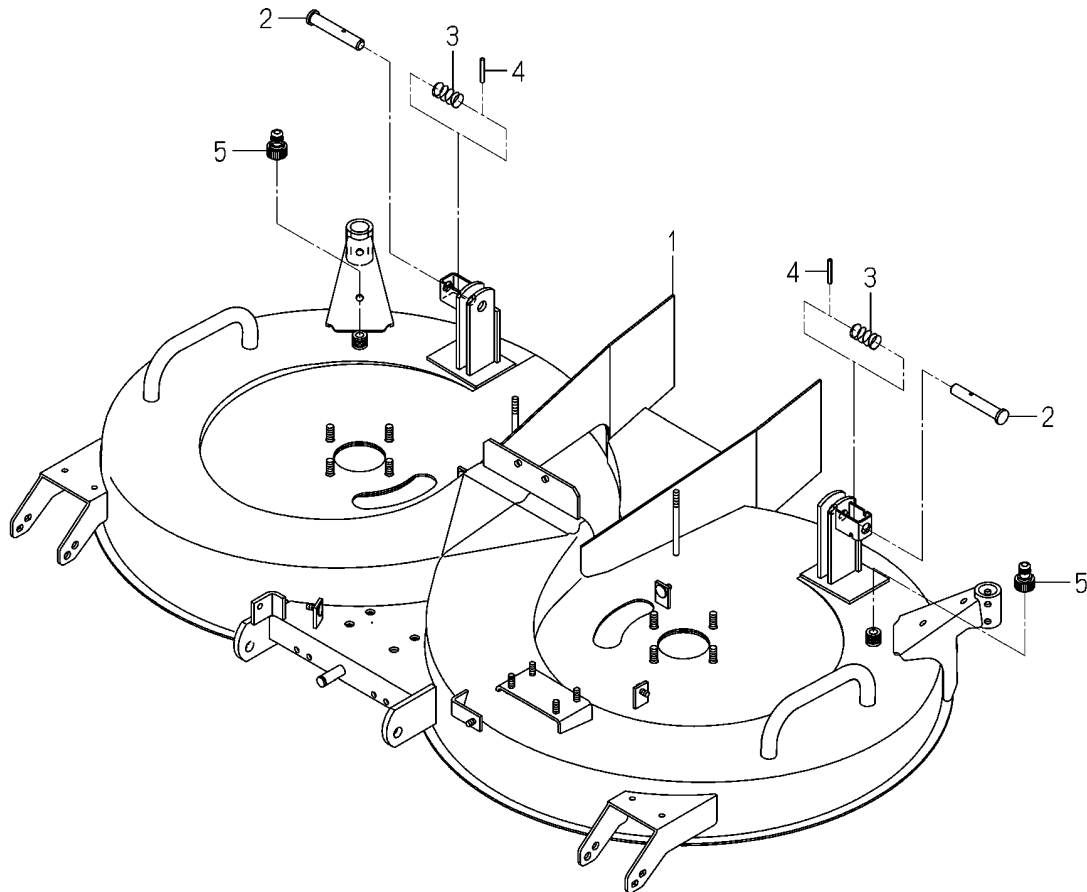
KEY	Part Code	Description	S P C	Type of Model				I T C	C O L	G R P	Remarks
				SCMA48 SXG22F	SCMA54 SXG22F						
1	8665-306-001-10	BLADE/60X716/C			1						
2	8665-306-002-10	BLADE/60X716/D			1						
3	8663-306-210-10	PLATE/I/80X110 COMP			2						
4	8663-306-004-00	SHIM/1.2			2						
5	V203-361-203-50	BOLT			2						
6	V401-160-012-00	WASHER,SP/M12			2						

FIG.009 DECK(MOWER)SYSTEM(SCMA48)



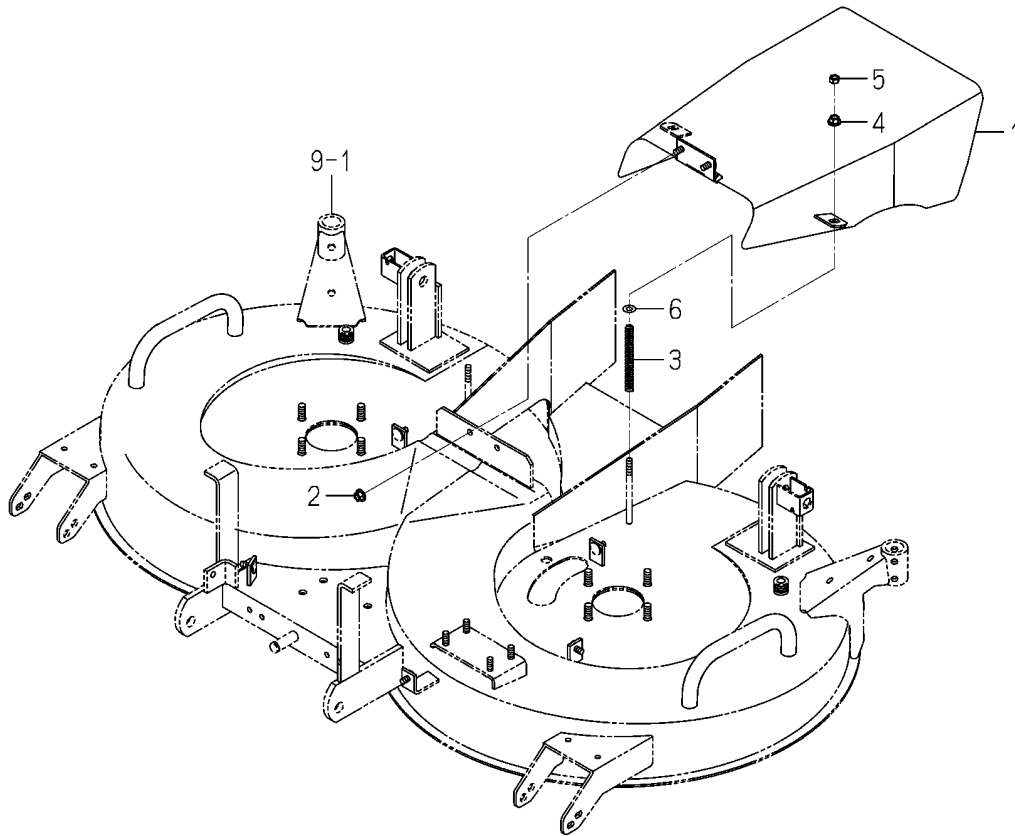
KEY	Part Code	Description	S P C	Type of Model				I T C	C O L	G R P	Remarks
				SCMA48 SXG22F	SCMA54 SXG22F						
1	8663-402-510-30	DECK/MOWER/48/B COMP	*	1							
2	8595-608-082-10	PIN/16X96	*	2							
3	1560-601-028-00	SPRING/HC042	*	2							
4	V580-140-504-00	PIN,SPRING/5 X40 W	*	2							
5	8663-402-002-00	PLUG/HOSE/A	*	2							

FIG.010 DECK(MOWER)SYSTEM(SCMA54)



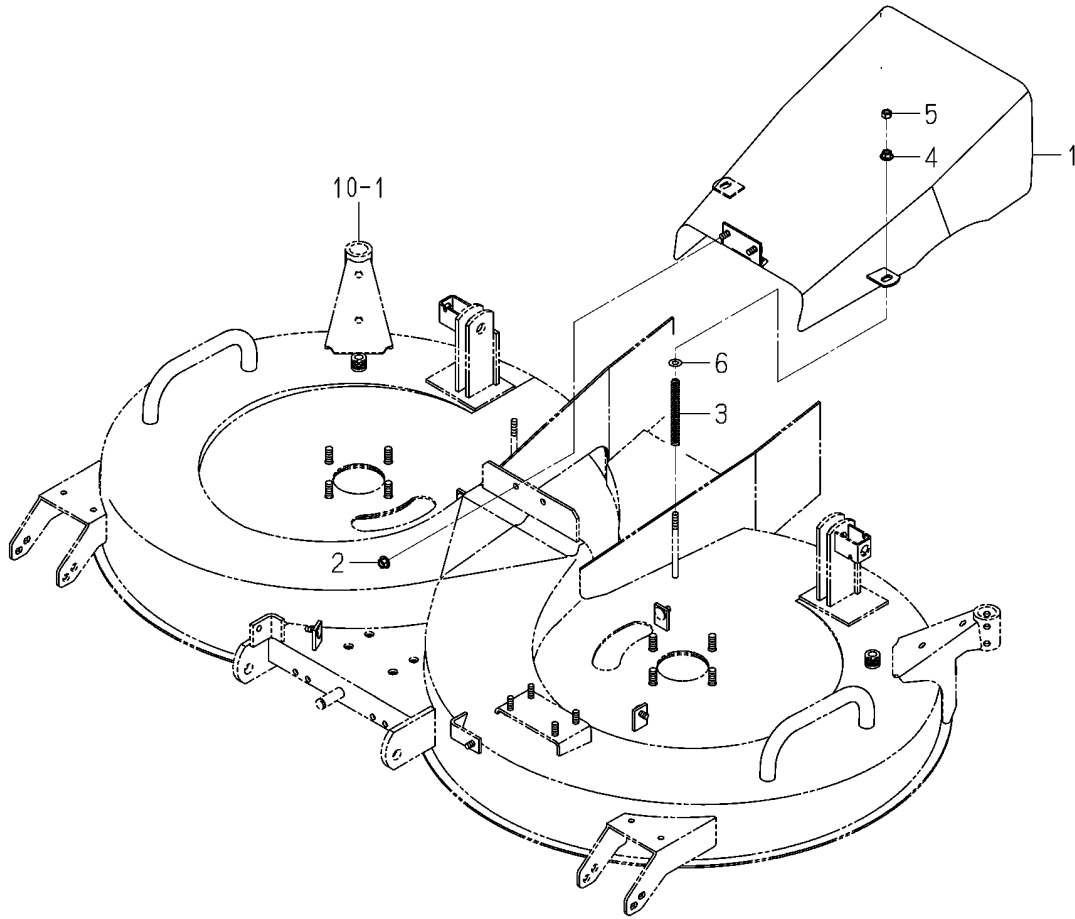
KEY	Part Code	Description	S P C	Type of Model				I T C	C O L	G R P	Remarks
				SCMA48 SXG22F	SCMA54 SXG22F						
1	8665-402-510-30	DECK/MOWER/54/B COMP			1					7F	
2	8595-608-082-10	PIN/16X96			2						
3	1560-601-028-00	SPRING/HC042			2						
4	V580-140-504-00	PIN,SPRING/5 X40 W			2						
5	8663-402-002-00	PLUG/HOSE/A			2						

FIG.011 COVER(DISCHARGE)SYSTEM(SCMA48)



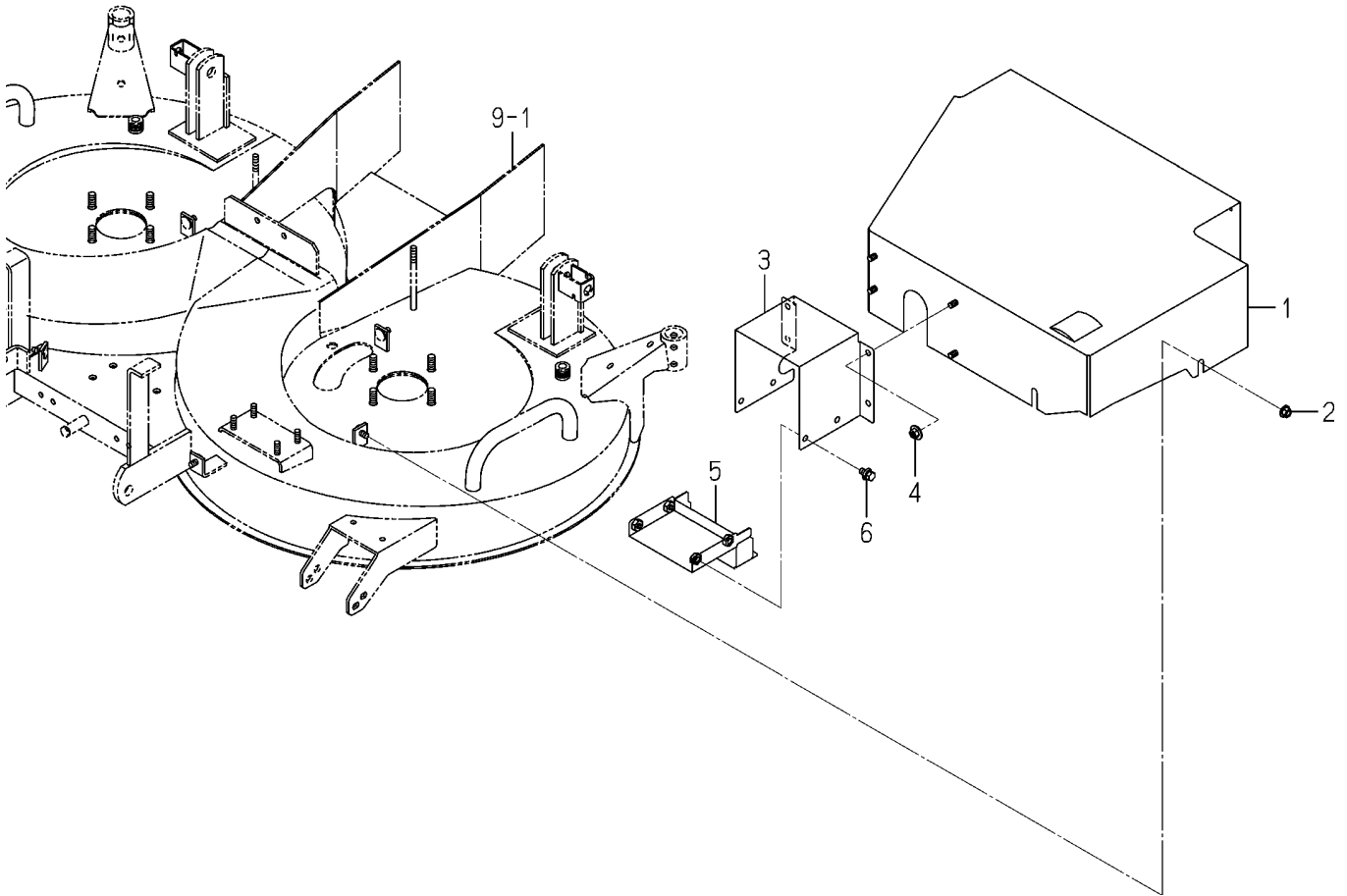
KEY	Part Code	Description	S P C	Type of Model					I T C	C O L	G R P	Remarks
				SCMA48 SXG22F	SCMA54 SXG22F							
1	8663-406-510-00	COVER/DISCHARGE/B	*	1								
2	V363-260-008-00	NUT/WASHER	*	2					7F			
3	8663-406-001-00	SPRING/HC110	*	2								
4	V363-260-008-00	NUT/WASHER	*	2								
5	V304-260-008-00	NUT	*	2								
6	V411-260-008-00	WASHER,PL/M 8	*	2								

FIG.012 COVER(DISCHARGE)SYSTEM(SCMA54)



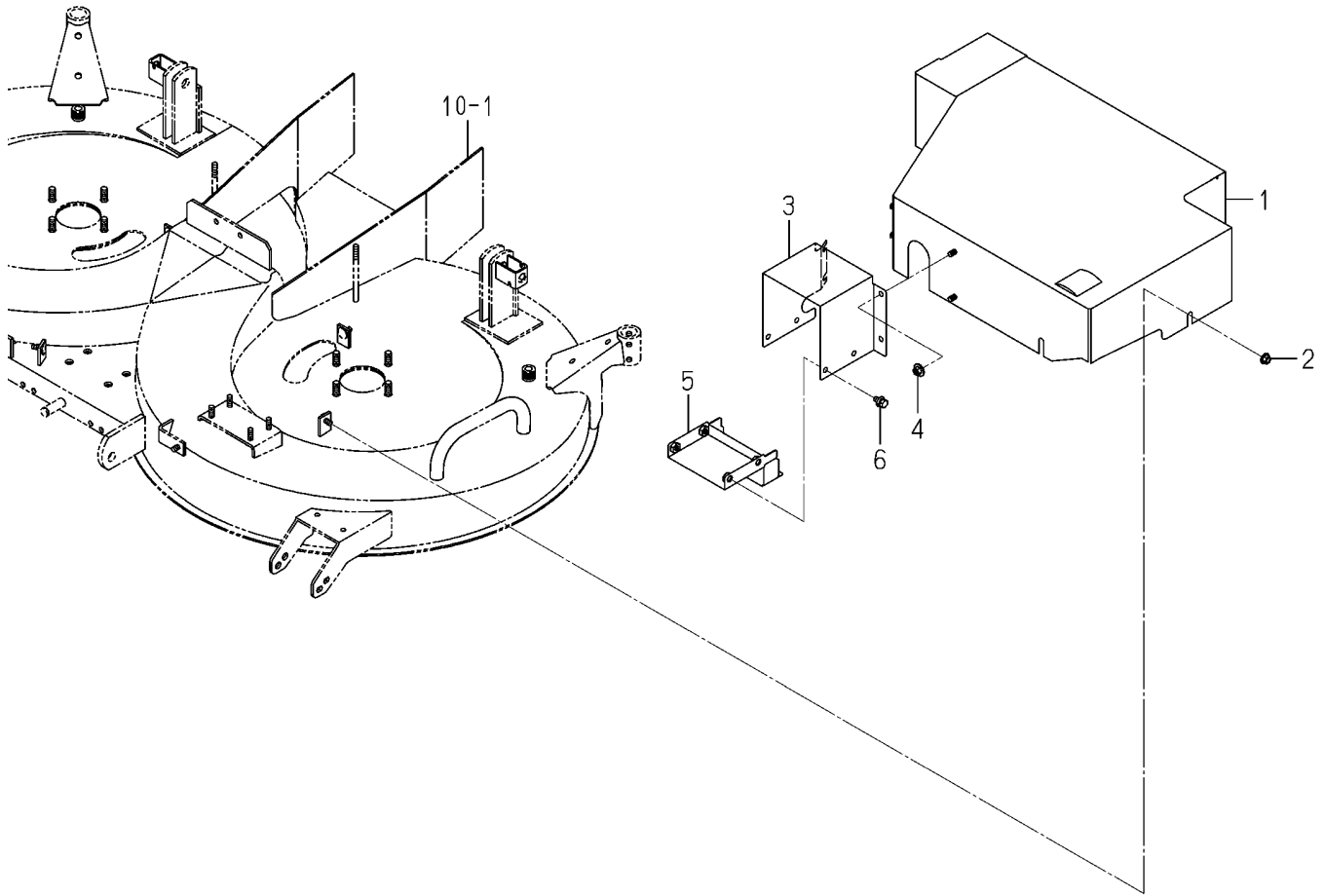
KEY	Part Code	Description	S P C	Type of Model				I T C	C O L	G R P	Remarks
				SCMA48 SXG22F	SCMA54 SXG22F						
1	8665-406-510-00	COVER/DISCHARGE/B			1						
2	V363-260-008-00	NUT/WASHER			2			7F			
3	8663-406-001-00	SPRING/HC110			2						
4	V363-260-008-00	NUT/WASHER			2						
5	V304-260-008-00	NUT			2						
6	V411-260-008-00	WASHER,PL/M 8			2						

FIG.013 COVER(BELT)SYSTEM(SCMA48)



KEY	Part Code	Description	S P C	Type of Model						I T C	C O L	G R P	Remarks
				SCMA48 SXG22F	SCMA54 SXG22F								
1	8663-407-520-00	COVER/BELT/B COMP	*	1								7F	
2	V363-260-008-00	NUT/WASHER	*	5									
3	8663-407-052-00	COVER/JOINT	*	1								7F	
4	V363-260-008-00	NUT/WASHER	*	4									
5	8663-407-540-00	COVER/YOKE COMP	*	1								7F	
6	V211-360-801-60	BOLT,SEMS (SP)	*	4									

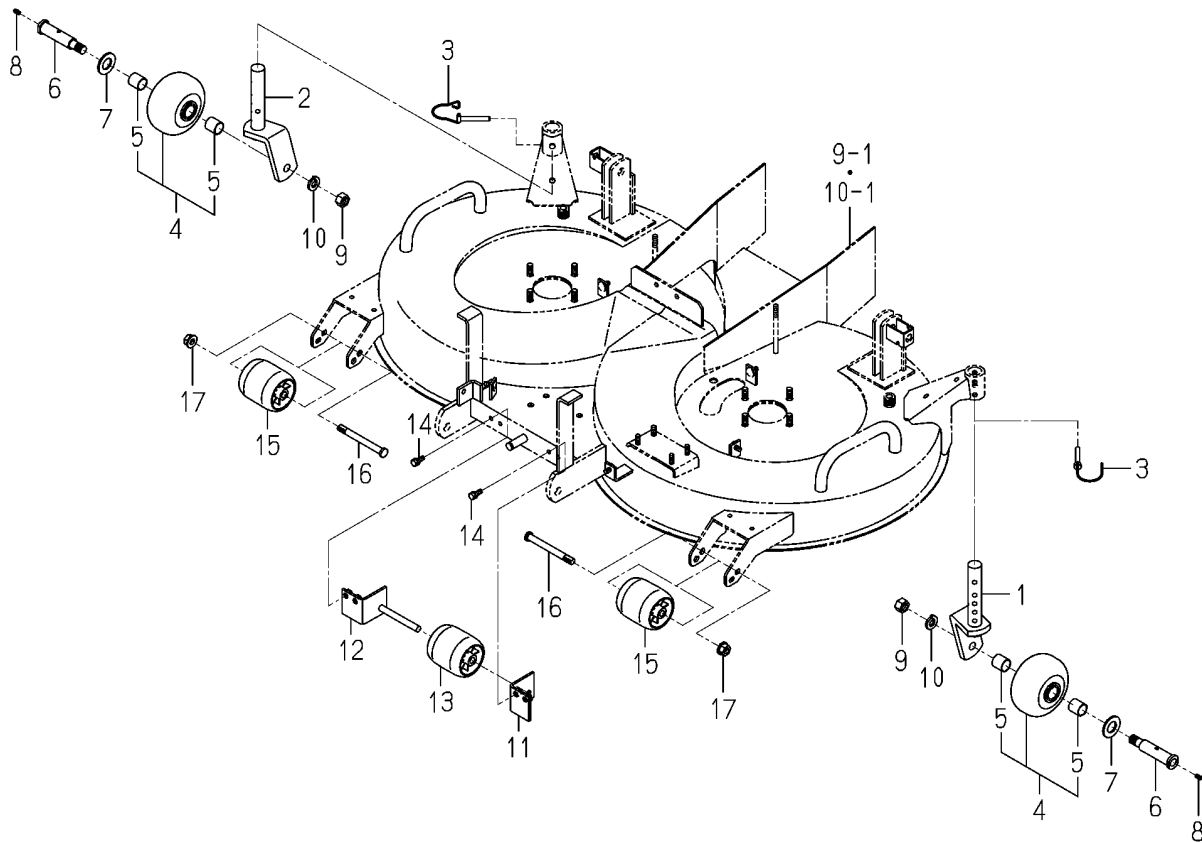
FIG.014 COVER(BELT)SYSTEM(SCMA54)



KEY	Part Code	Description	S P C	Type of Model					I T C	C O L	G R P	Remarks
				SCMA48 SXG22F	SCMA54 SXG22F							
1	8665-407-520-00	COVER/BELT/B COMP			1					7F		
2	V363-260-008-00	NUT/WASHER			5							
3	8665-407-051-00	COVER/JOINT			1					7F		
4	V363-260-008-00	NUT/WASHER			4							
5	8663-407-540-00	COVER/YOKE COMP			1					7F		
6	V211-360-801-60	BOLT,SEMS (SP)			4							

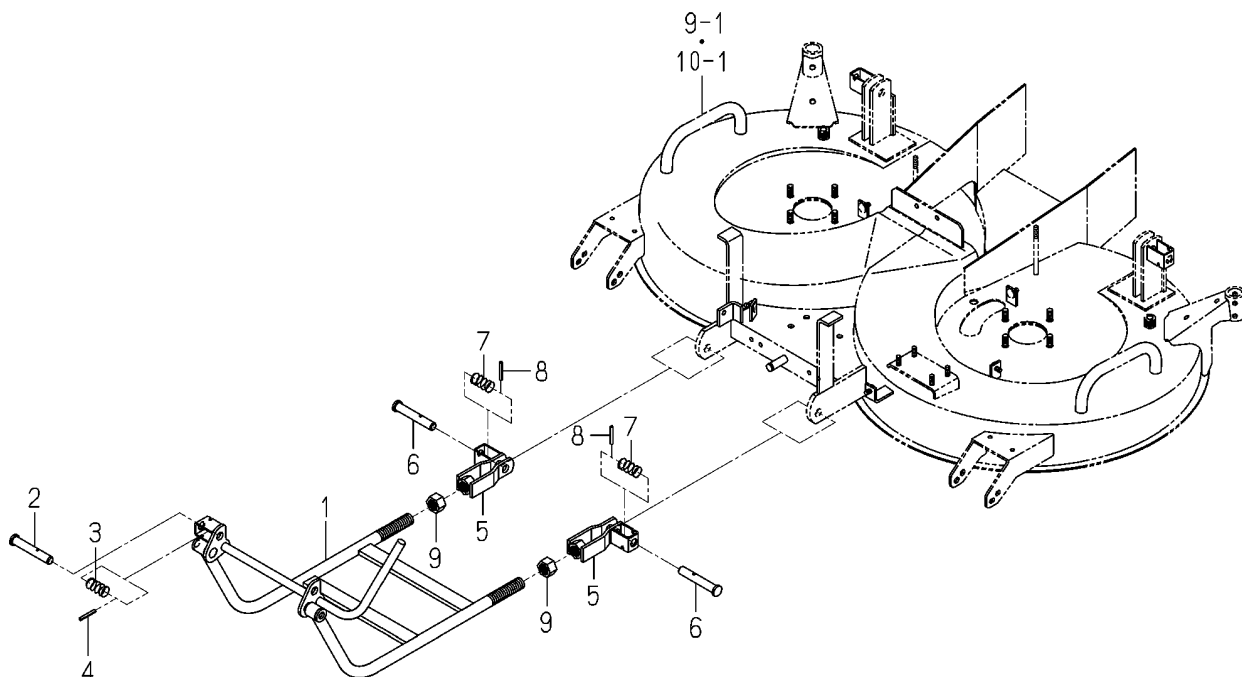


FIG.015 WHEEL(GAUGE)SYSTEM



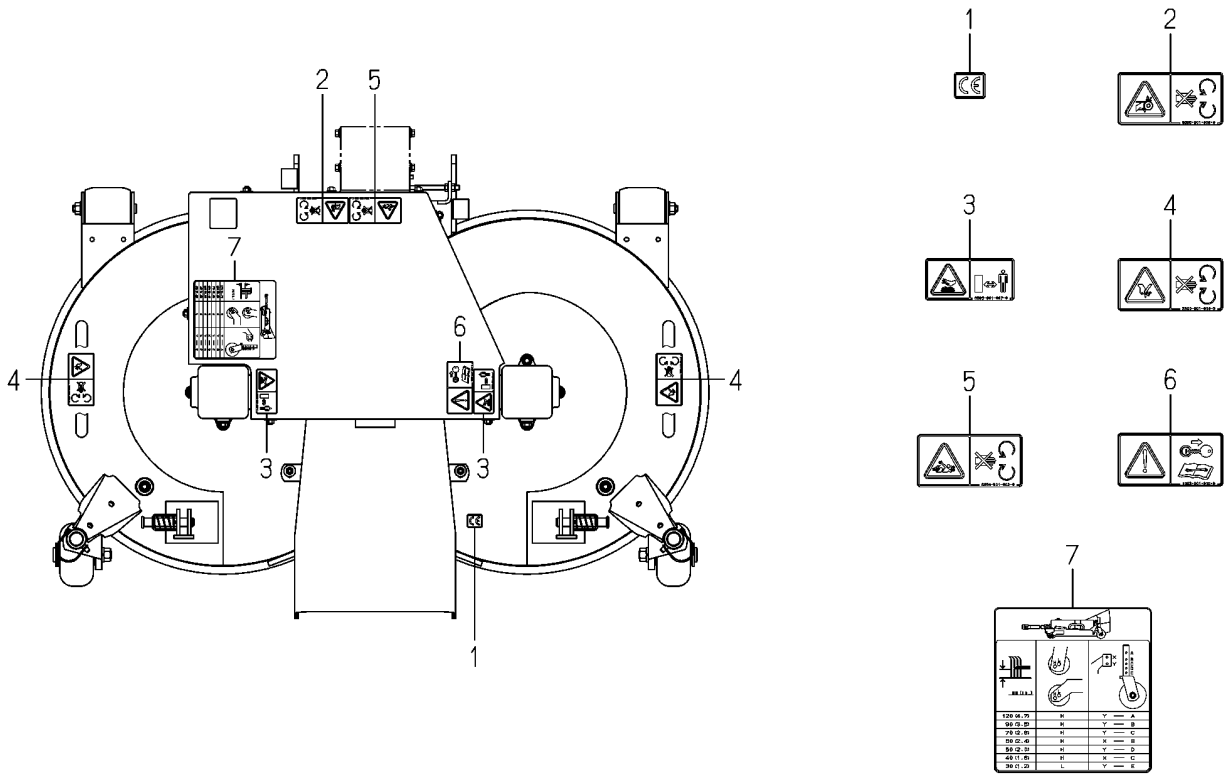
KEY	Part Code	Description	S P C	Type of Model						I T C	C O L	G R P	Remarks
				SCMA48 SXG22F	SCMA54 SXG22F								
1	8663-501-210-00	FORK/WHEEL/LH COMP	*	1	1								
2	8663-501-220-00	FORK/WHEEL/RH COMP	*	1	1								
3	8663-501-240-00	PIN/08X60 COMP	*	2	2								
4	8657-501-530-00	WHEEL/GAUGE ASSY	*	2	2								
5	8654-501-283-00	BUSH/22X25X25	*	4	4								
6	8663-501-001-10	PIN/22X106	*	2	2								
7	V411-260-022-00	WASHER,PL/M22	*	2	2								
8	V760-150-000-00	NIPPLE,GREASE	*	2	2								
9	V304-460-016-00	NUT/M16	*	2	2								
10	V401-160-016-00	WASHER,SP/M16	*	2	2								
11	8663-501-510-00	STAY/GAUGE/LH COMP	*	1	1								
12	8663-501-520-00	STAY/GAUGE/RH COMP	*	1	1								
13	8595-501-001-20	WHEEL/GAUGE/FRONT	*	1	1								
14	V211-260-802-00	BOLT/S	*	4	4								
15	8595-501-001-20	WHEEL/GAUGE/FRONT	*	2	2								
16	8595-505-051-30	PIN/12X117	*	2	2								
17	V360-260-012-00	NUT/WASHER	*	2	2								

FIG.016 LINK(LIFT)SYSTEM



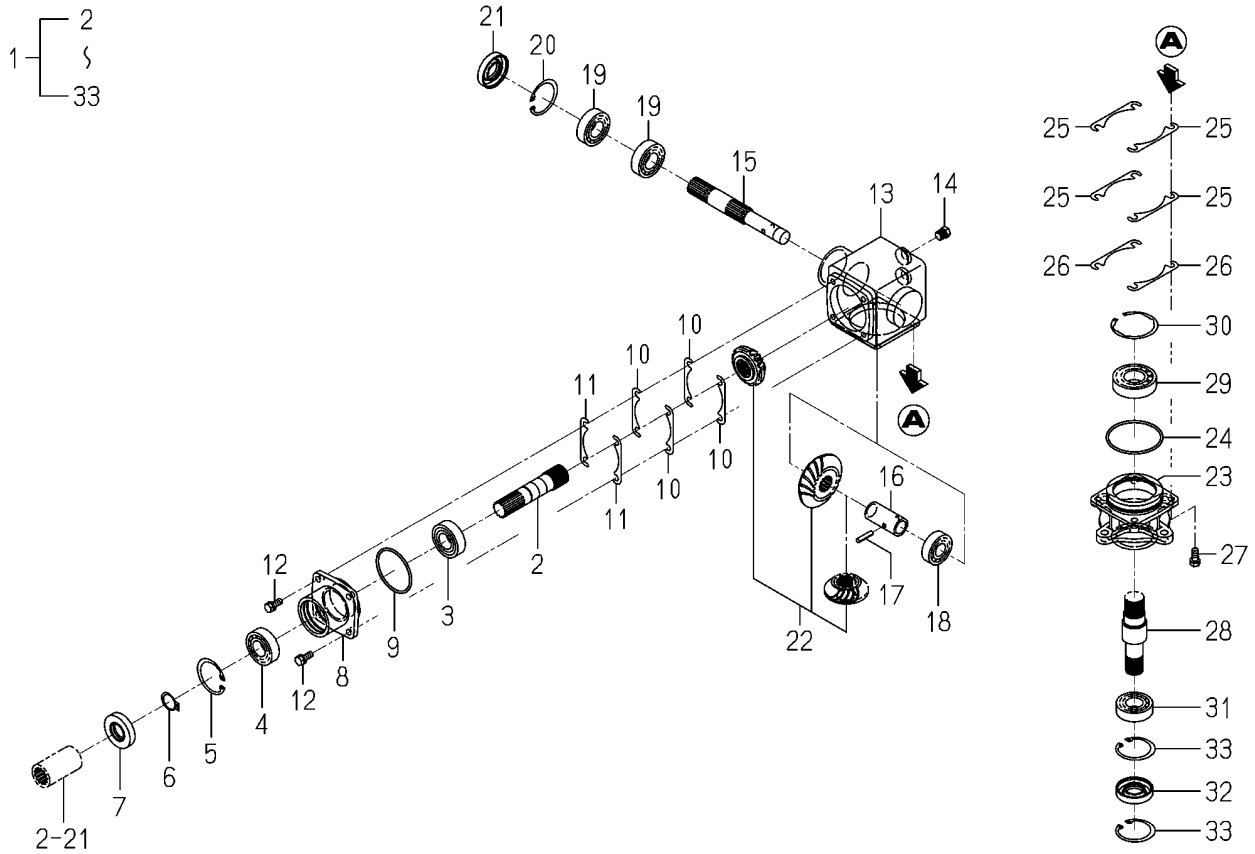
KEY	Part Code	Description	S P C	Type of Model				I T C	C O L	G R P	Remarks
				SCMA48 SXG22F	SCMA54 SXG22F						
1	8663-608-210-10	ARM/FRONT COMP	*	1	1					7F	
2	8595-608-082-10	PIN/16X96	*	1	1						
3	1560-601-028-00	SPRING/HC042	*	1	1						
4	V580-140-504-00	PIN,SPRING/5 X40 W	*	1	1						
5	8657-608-720-00	FORK/M22 COMP	*	2	2						
6	8595-608-082-10	PIN/16X96	*	2	2						
7	1560-601-028-00	SPRING/HC042	*	2	2						
8	V580-140-504-00	PIN,SPRING/5 X40 W	*	2	2						
9	V334-460-022-00	NUT	*	2	2						

FIG.017 LABEL



KEY	Part Code	Description	SPC	Type of Model				ITC	COL	GRP	Remarks
				SCMA48 SXG22F	SCMA54 SXG22F						
1	2500-901-027-00	LABEL/CE	*	1	1						
2	8595-901-006-00	LABEL/WARNING/BELT	*	1	1						
3	8595-901-007-00	LABEL/WARNING/HOT	*	2	2						
4	2500-901-014-30	LABEL/DANGER	*	2	2						
5	8654-901-002-00	LABEL/PTO	*	1	1						
6	1593-901-015-00	LABEL/MAINTENANCE	*	1	1						
7	8663-901-001-00	LABEL/GAUGEWHEEL	*	1	1						

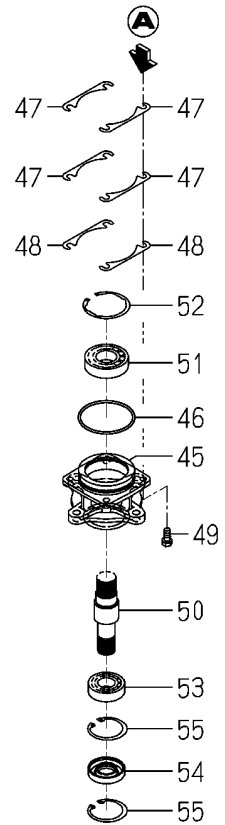
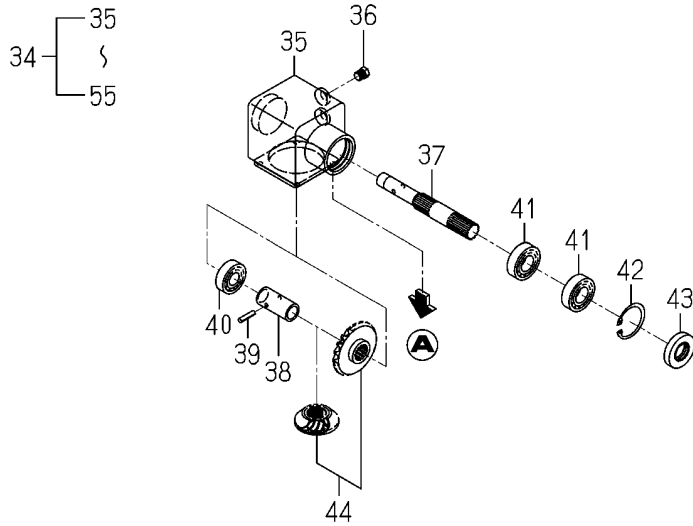
FIG.018 CASE(BEVEL)SET(REPAIR) (1/2)



KEY	Part Code	Description	S P C	Type of Model				I T C	C O L	G R P	Remarks
				SCMA48 SXG22F	SCMA54 SXG22F						
1	8663-202-560-00	CASE/BEVEL/LH ASSY	R	1	1						
2	8663-202-051-00	SHAFT/LH/REAR	R	1	1						
3	1594-221-001-00	BEARING/BALL 6205SH2	R	1	1						
4	V600-110-620-50	BEARING,RB/6205	R	1	1						
5	V705-140-052-00	RING,SNAP/52 C	R	1	1						
6	V704-140-025-00	RING,SNAP/25 C	R	1	1						
7	V744-125-521-00	SEAL,OIL/TC255210	R	1	1						
8	8663-202-052-10	METAL/BEVELCASE	R	1	1						
9	V721-103-106-50	O-RING/G65	R	1	1						
10	8663-202-055-00	SHIM/0.1	R	4	4						
11	8663-202-056-00	SHIM/0.2	R	2	2						
12	V211-260-802-00	BOLT/S	R	4	4						
13	8663-202-057-10	CASE/BEVEL/LH	R	1	1						
14	7955-201-026-00	PLUG,DRAIN (1/4)	R	2	2						
15	8663-202-058-00	SHAFT/CASE	R	1	1						
16	8663-202-059-00	HUB/SPACER	R	1	1						
17	V580-140-602-80	PIN,SPRING/6 X28 W	R	1	1						
18	V600-110-620-40	BEARING,RB/6204	R	1	1						
19	V600-110-620-50	BEARING,RB/6205	R	2	2						
20	V705-140-052-00	RING,SNAP/52 C	R	1	1						
21	V744-125-521-00	SEAL,OIL/TC255210	R	1	1						
22	8663-202-610-00	GEAR/B/21-25-21 SET	R	1	1						
23	8663-301-051-20	METAL/BLADE/B	R	1	1						
24	V721-103-107-50	O-RING/G75	R	1	1						
25	8595-201-021-00	SHIM/0.1	R	4	4						
26	8595-201-022-00	SHIM/0.2	R	2	2						
27	V211-260-802-00	BOLT/S	R	4	4						
28	8663-301-052-10	SHAFT/BLADE/B	R	1	1						
29	V600-110-620-60	BEARING,RB/6206	R	1	1						
30	V707-140-062-00	RING/SNAP	R	1	1						

FIG.018A CASE(BEVEL)SET(REPAIR) (2/2)

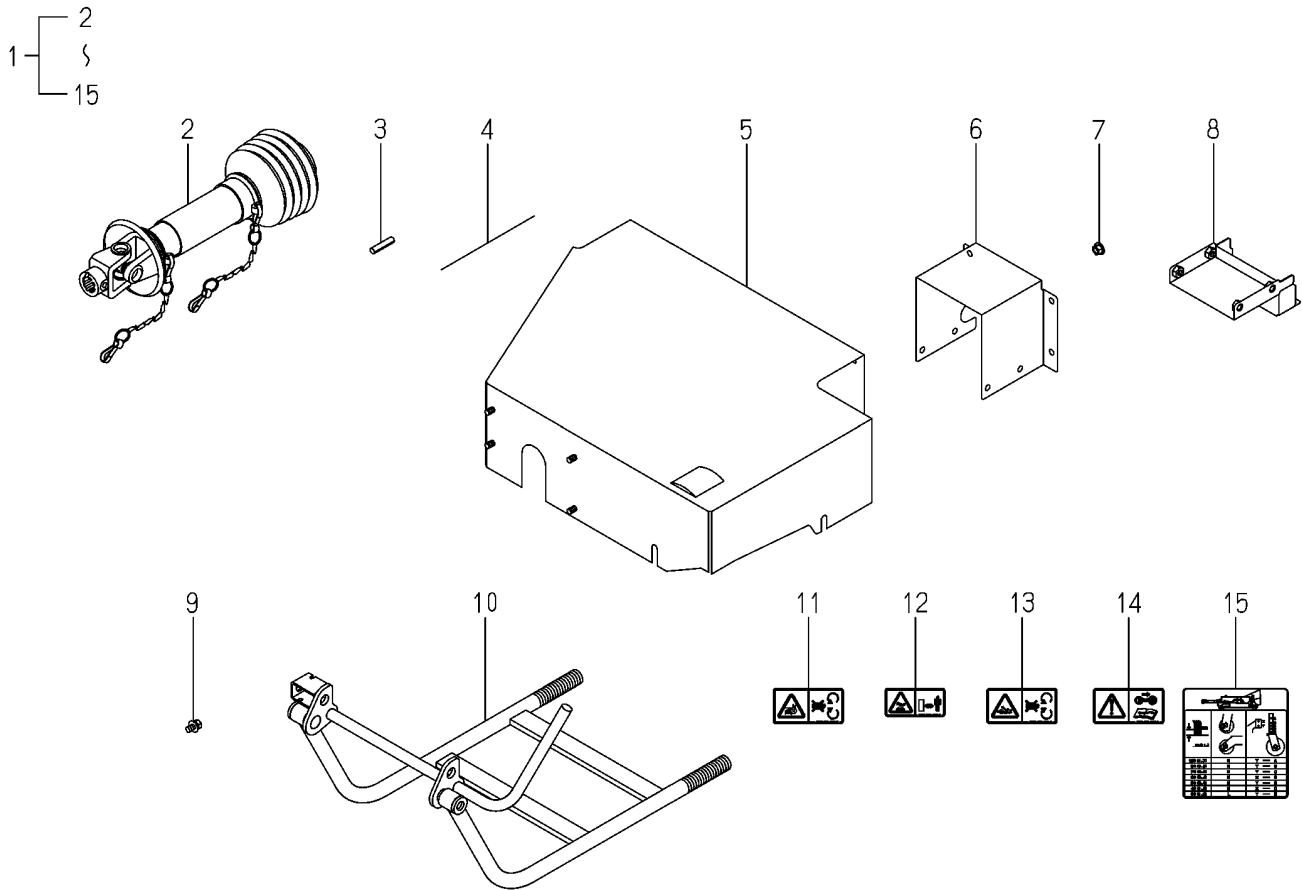
31~33-PLEASE SEE (1/2)



KEY	Part Code	Description	S P C	Type of Model				I T C	C O L	G R P	Remarks
				SCMA48 SXG22F	SCMA54 SXG22F						
31	V600-110-620-50	BEARING,RB/6205	R	1	1						
32	V744-125-521-00	SEAL,OIL/TC255210	R	1	1						
33	V705-140-052-00	RING,SNAP/52 C	R	2	2						
34	8663-202-570-00	CASE/BEVEL/RH ASSY	R	1	1						
35	8663-202-062-10	CASE/BEVEL/RH	R	1	1			7F			
36	7955-201-026-00	PLUG,DRAIN (1/4)	R	2	2						
37	8663-202-058-00	SHAFT/CASE	R	1	1						
38	8663-202-059-00	HUB/SPACER	R	1	1						
39	V580-140-602-80	PIN,SPRING/6 X28 W	R	1	1						
40	V600-110-620-40	BEARING,RB/6204	R	1	1						
41	V600-110-620-50	BEARING,RB/6205	R	2	2						
42	V705-140-052-00	RING,SNAP/52 C	R	1	1						
43	V744-125-521-00	SEAL,OIL/TC255210	R	1	1						
44	8663-202-620-00	GEAR/BEVEL/25-2 SET	R	1	1						
45	8663-301-051-20	METAL/BLADE/B	R	1	1						
46	V721-103-107-50	O-RING/G75	R	1	1						
47	8595-201-021-00	SHIM/0.1	R	4	4						
48	8595-201-022-00	SHIM/0.2	R	2	2						
49	V211-260-802-00	BOLT/S	R	4	4						
50	8663-301-052-10	SHAFT/BLADE/B	R	1	1						
51	V600-110-620-60	BEARING,RB/6206	R	1	1						
52	V707-140-062-00	RING/SNAP	R	1	1						
53	V600-110-620-50	BEARING,RB/6205	R	1	1						
54	V744-125-521-00	SEAL,OIL/TC255210	R	1	1						
55	V705-140-052-00	RING,SNAP/52 C	R	2	2						

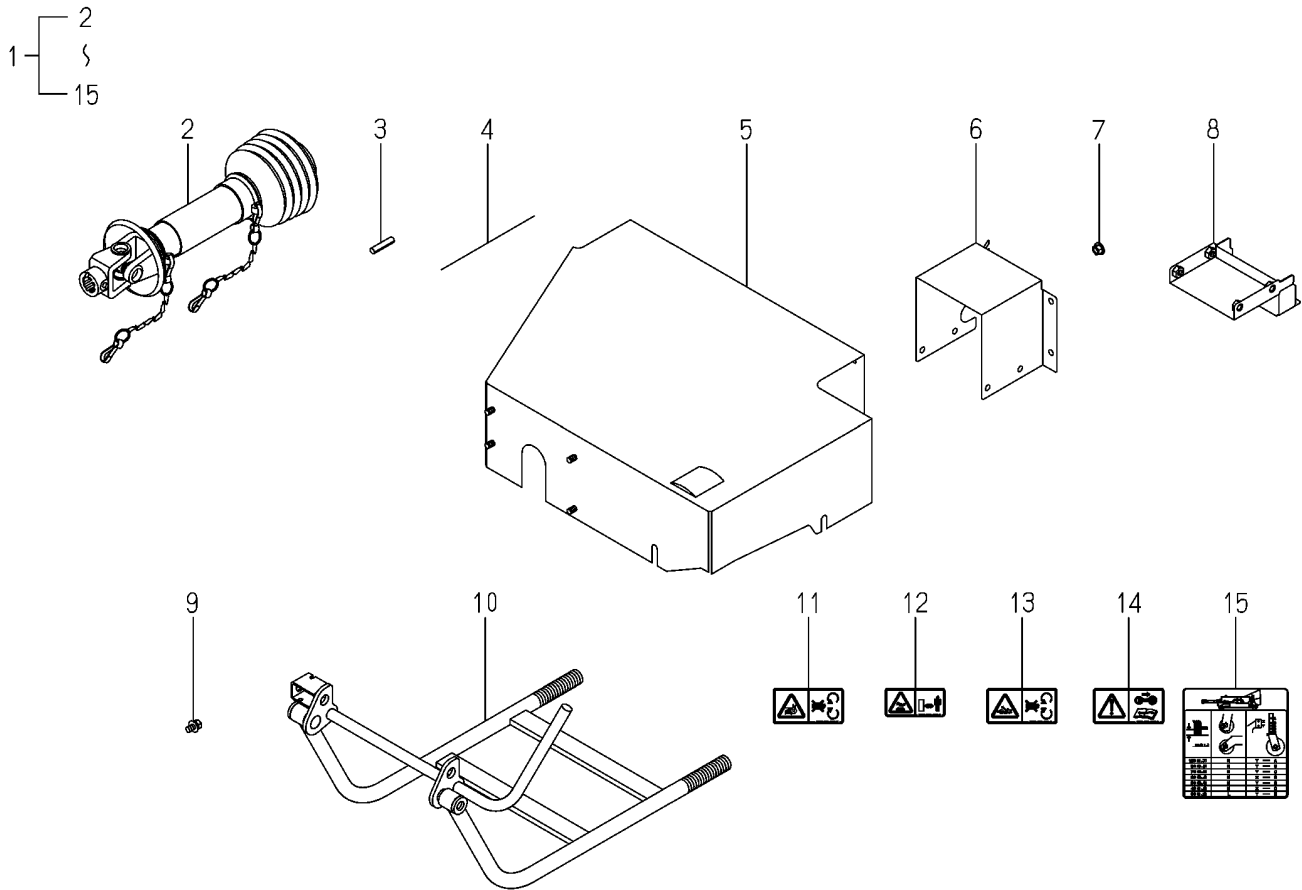


FIG.020 F(SXG22)KIT(SCMA48)(REPAIR)



KEY	Part Code	Description	S P C	Type of Model					I T C	C O L	G R P	Remarks
				SCMA48 SXG22F	SCMA54 SXG22F							
1	8663-950-210-00	F/SXG22KIT	R	1								
2	8663-101-510-00	JOINT/UNIVERSAL SET	R	1							022	
3	V580-140-804-00	PIN,SPRING/8 X40 W	R	1								
4		WIRE	R	1								
5	8663-407-520-00	COVER/BELT/B COMP	R	1						7F		
6	8663-407-052-00	COVER/JOINT	R	1						7F		
7	V363-260-008-00	NUT/WASHER	R	4								
8	8663-407-540-00	COVER/YOKE COMP	R	1						7F		
9	V211-360-801-60	BOLT,SEMS (SP)	R	4								
10	8663-608-210-10	ARM/FRONT COMP	R	1						7F		
11	8595-901-006-00	LABEL/WARNING/BELT	R	1								
12	8595-901-007-00	LABEL/WARNING/HOT	R	2								
13	8654-901-002-00	LABEL/PTO	R	1								
14	1593-901-015-00	LABEL/MAINTENANCE	R	1								
15	8663-901-001-00	LABEL/GAUGEWHEEL	R	1								

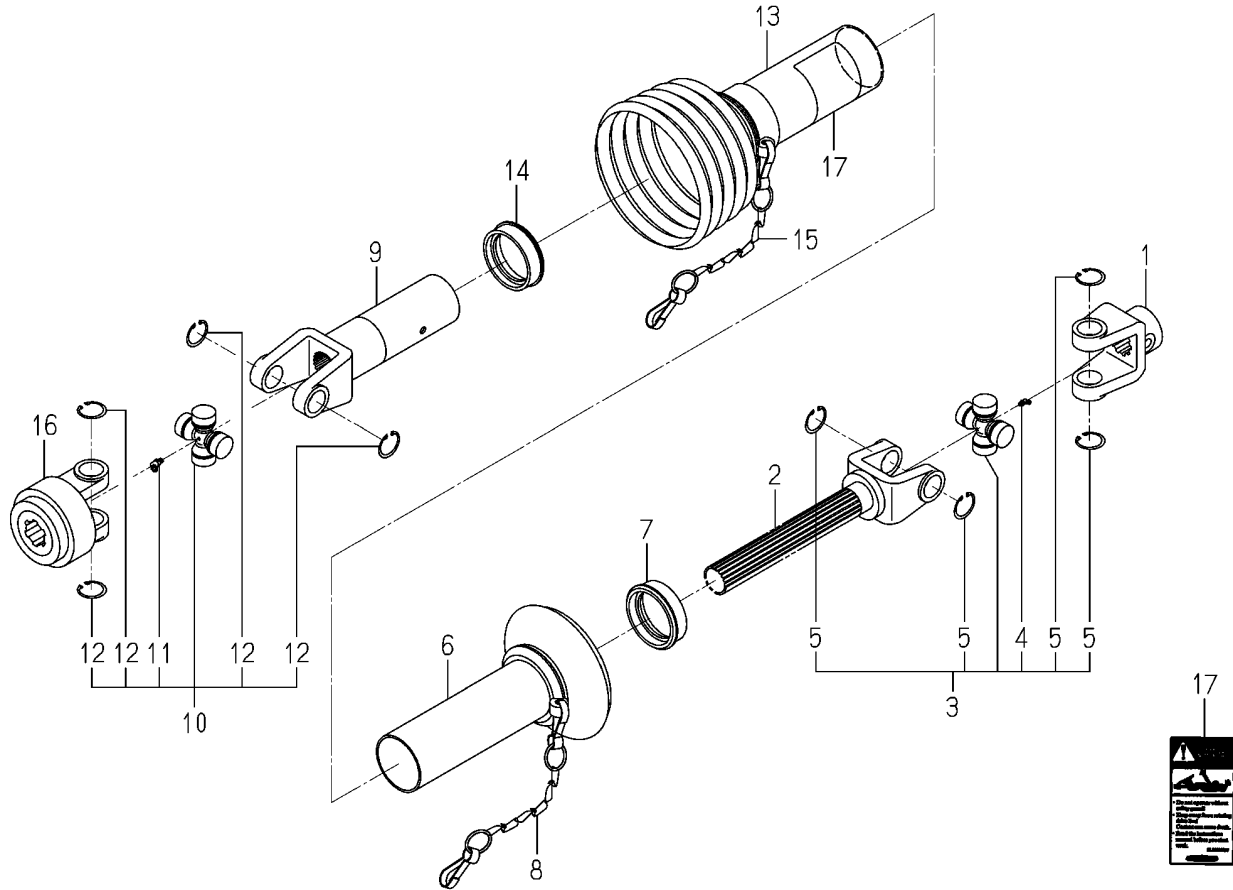
FIG.021 F(SXG22)KIT(SCMA54)(REPAIR)



KEY	Part Code	Description	S P C	Type of Model					I T C	C O L	G R P	Remarks
				SCMA48 SXG22F	SCMA54 SXG22F							
1	8665-950-210-00	F/SXG22KIT			1							
2	8663-101-510-00	JOINT/UNIVERSAL SET			1						022	
3	V580-140-804-00	PIN,SPRING/8 X40 W			1							
4		WIRE			1							
5	8665-407-520-00	COVER/BELT/B COMP			1				7F			
6	8665-407-051-00	COVER/JOINT			1				7F			
7	V363-260-008-00	NUT/WASHER			4							
8	8663-407-540-00	COVER/YOKE COMP			1				7F			
9	V211-360-801-60	BOLT,SEMS (SP)			4							
10	8663-608-210-10	ARM/FRONT COMP			1				7F			
11	8595-901-006-00	LABEL/WARNING/BELT			1							
12	8595-901-007-00	LABEL/WARNING/HOT			2							
13	8654-901-002-00	LABEL/PTO			1							
14	1593-901-015-00	LABEL/MAINTENANCE			1							
15	8663-901-001-00	LABEL/GAUGEWHEEL			1							



FIG.022 COMPONENT PARTS FOR 8663-101-510-00 ON Fig.1



KEY	Part Code	Description	S P C	Type of Model				I T C	C O L	G R P	Remarks
				SCMA48 SXG22F	SCMA54 SXG22F						
1	8654-101-221-00	FITTINGYOKE	*	1	1						
2	8663-101-211-00	SHAFTYOKE	*	1	1						
3	8654-101-230-00	JOURNALCROSSE ASSY	*	1	1						
4	8654-101-232-00	GREASENIPPLE	*	1	1						
5	8654-101-233-00	SURCLIP/HOLE	*	4	4						
6	8663-101-521-00	SAFETYGUARD/IN	*	1	1						
7	7821-102-008-00	RING/SLIDE	*	1	1						
8	7821-102-220-00	CHAIN ASSY	*	1	1						
9	8595-101-731-00	SLEEVEYOKE	*	1	1						
10	8654-101-230-00	JOURNALCROSSE ASSY	*	1	1						
11	8654-101-232-00	GREASENIPPLE	*	1	1						
12	8654-101-233-00	SURCLIP/HOLE	*	4	4						
13	8663-101-531-00	SAFETYGUARD/OUT	*	1	1						
14	7821-102-008-00	RING/SLIDE	*	1	1						
15	7821-102-220-00	CHAIN ASSY	*	1	1						
16	8657-101-501-00	AS YOKE ASSY	*	1	1						
17	8658-101-674-00	LABEL/DANGER/JOINT/G	*	1	1						