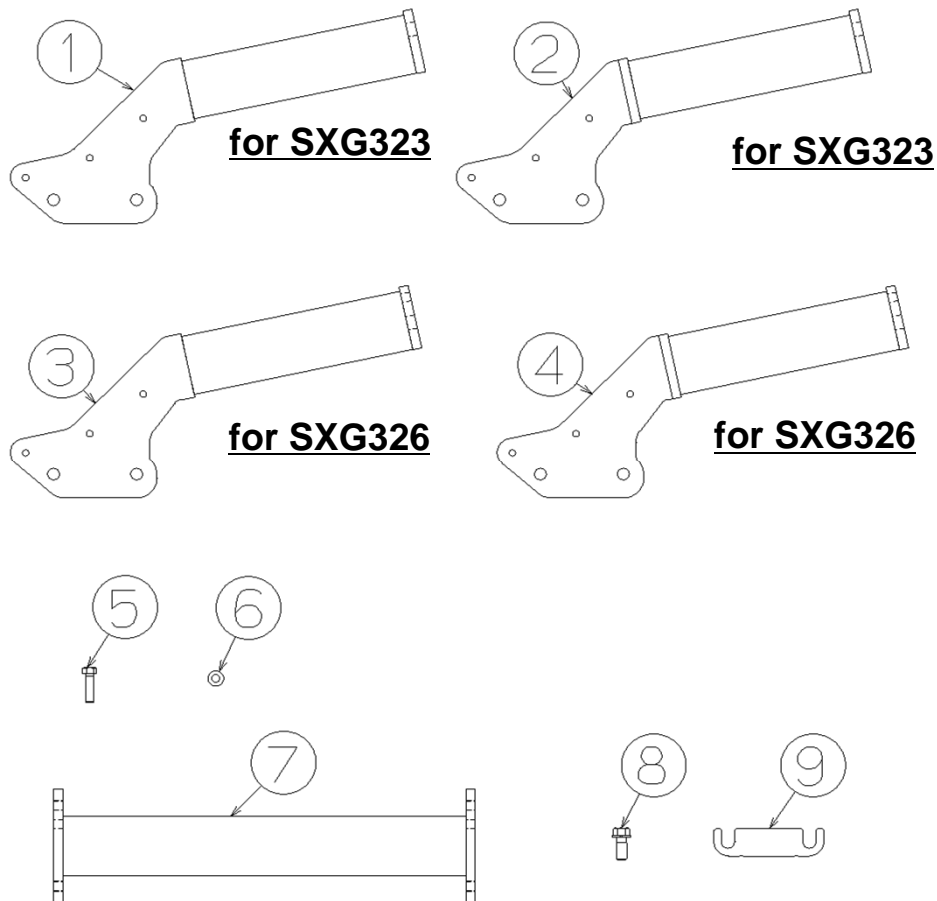


# ASSEMBLY INSTRUCTION for Low Dump Collector SBC550X-3 (new foldable ROPS type)

This assembly instruction is available for the following serial No. of SBC550X-3.

Model	Serial No.
SBC550X-3LRE4	From 400001
SBC550X-3LE4	From 400001

1. Make sure that all the necessary parts are in the package.

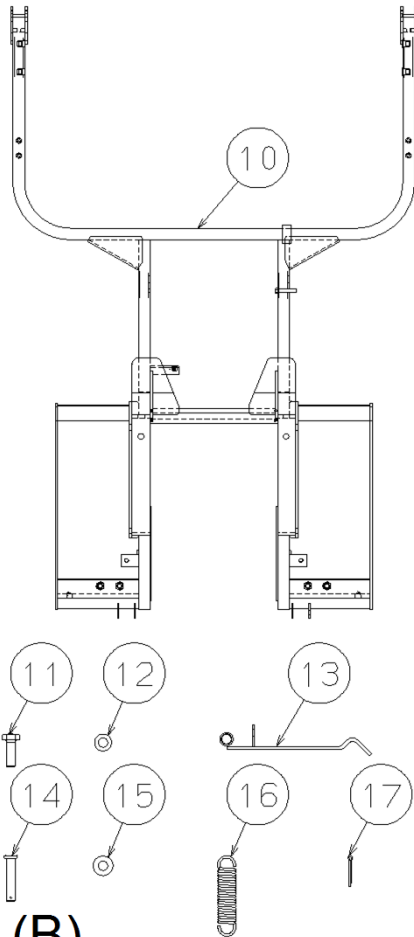


## \*PARTS LIST (A)

No.	Parts No.	Part name	Qty
1	8664-107-510-00	STAY/CASE/323/LH COMP	1
2	8664-107-520-00	STAY/CASE/323/RH COMP	1
3	8664-157-510-00	STAY/CASE/326/LH COMP	1
4	8664-157-520-00	STAY/CASE/326/RH COMP	1
5	8664-107-001-00	BOLT/M8X30	6
6	V401-160-008-00	WASHER/LOCK/M8	6
7	8664-107-530-00	STAY/PIPE COMP	1
8	V211-561-002-50	BOLT/S/M10X25	4
9	1728-306-005-10	SHIM/0.6	4

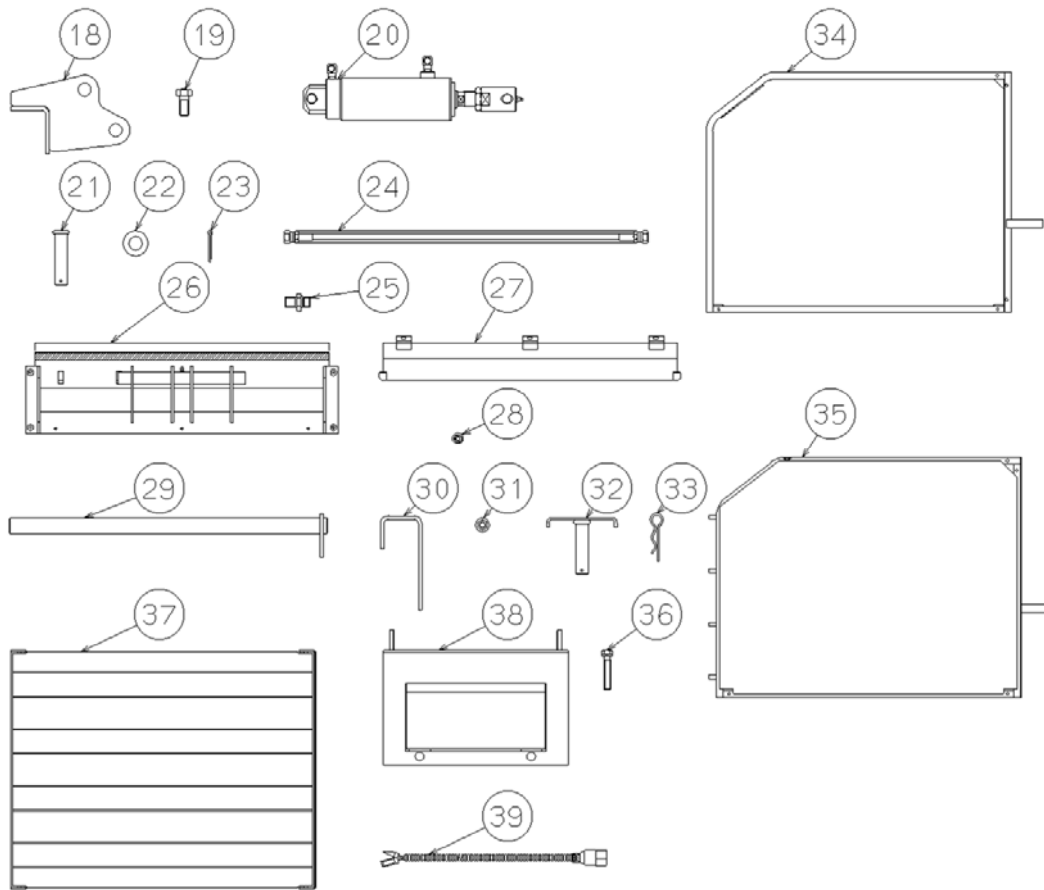
\*Parts (1) and (2) are for exclusive use of SXG323

\*Parts (3) and (4) are for exclusive use of SXG326



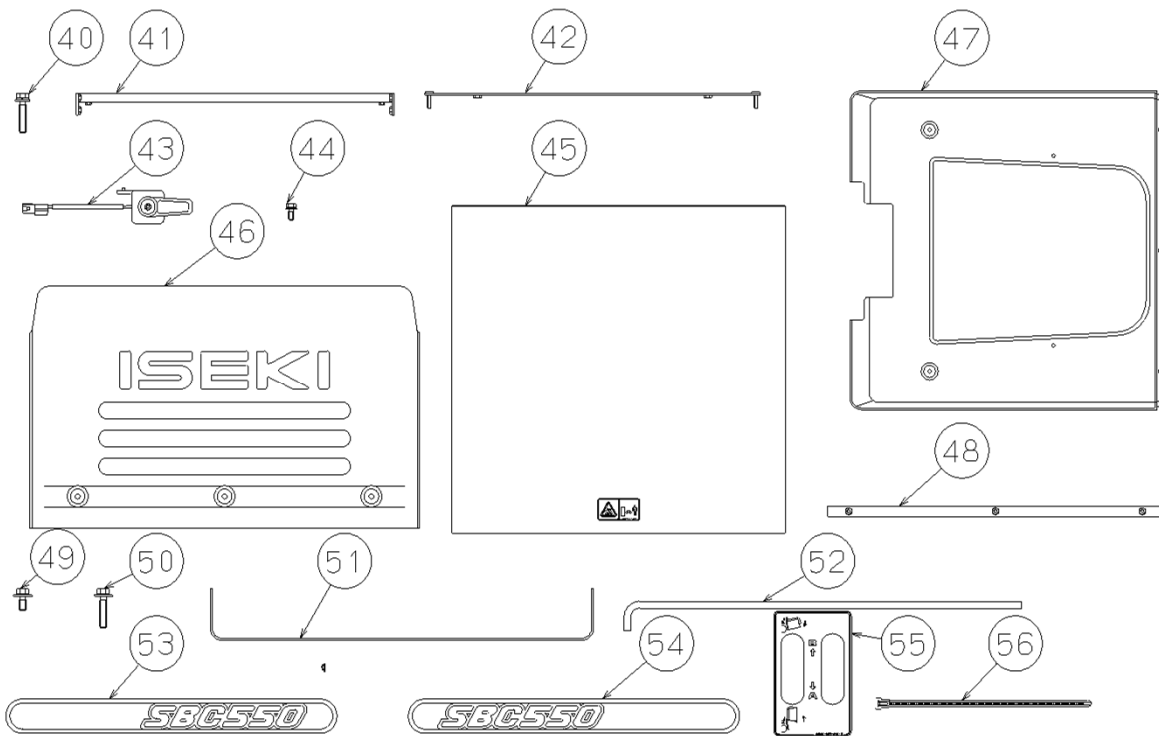
**\*PARTS LIST (B)**

No.	Parts No.	Part name	Qty
10	8664-106-330-00	FRAME/COLLECTOR COMP	1
11	3853-560-002-00	BOLT/M12X35	10
12	V401-160-012-00	WASHER/LOCK/M12	14
13	8664-106-230-00	HOOK COMP	2
14	8664-155-001-00	PIN/12X56	2
15	V411-260-012-00	WASHER/M12	2
16	3746-235-002-00	SPRING	2
17	V500-163-002-50	PIN/COTTER/3X25	2



**\*PARTS LIST (C)**

No.	Parts No.	Part name	
18	8664-505-210-10	STAY/CYLINDER	COMP
19	V201-361-202-50	BOLT/M12X25	
20		CYLINDER/DUMP/L	SET
21	8664-505-003-00	PIN/16X65	
22	V411-260-016-00	WASHER/M16	
23	V500-163-003-00	PIN/COTTER/3X30	
24	8664-505-250-00	HOSE/HYDRO/650	ASSY
25	3829-387-410-00	ADAPTER/G1/4	
26		COVER/UPPER	SET
27	8664-305-310-00	COVER/UPPER SUB	COMP
28	V360-260-006-00	NUT/WASHER/M6	
29	8664-305-210-10	PIN/20X410	COMP
30	8664-505-004-00	PLATE/HOOK	
31	V362-260-008-00	NUT/WASHER/M8	
32	8664-505-220-00	PIN/16X65	COMP
33	1305-931-003-00	PIN/HAIR	
34	8664-305-240-30	FRAME/SIDE/LH	COMP
35	8664-305-250-30	FRAME/SIDE/RH	COMP
36	V211-560-804-50	BOLT/S/7T/M8X45	
37	8664-305-260-10	FRAME/LOWER	COMP
38		PLATE/SENSOR/L	SET
39	8664-605-220-10	HARNESS/L	ASSY

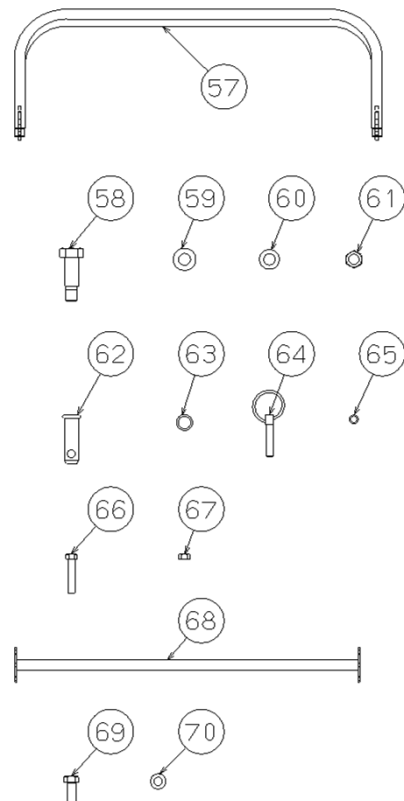


## \*PARTS LIST (D)

No.	Parts No.	Part name	Qty
40	V211-660-804-00	BOLT/SP/7T/M8X40	8
41	8664-305-230-00	FRAME/REAR	COMP 1
42	8664-305-320-00	PLATE/COVER/FRONT	COMP 1
43	1716-680-330-00	SWITCH/LEVER	ASSY 1
44	V210-360-601-60	BOLT/SP/M6X16	1
45	8664-305-001-00	NET/REAR	1
46	8664-305-003-10	COVER/CONTAINER/REAR	1
47	8664-305-002-00	COVER/CONTAINER/FRONT	1
48	8664-305-330-00	PLATE/COVER/REAR	COMP 1
49	8664-305-004-00	BOLT/SP/M8X20	10
50	8664-305-005-00	BOLT/SP/M8X40	2
51	8664-355-059-10	GUIDE/REAR	1
52	8664-105-001-10	BAR	1
53	8664-905-001-00	ORNAMENT/SBC550/LH	1
54	8664-905-002-00	ORNAMENT/SBC550/RH	1
55	8664-905-004-00	LABEL/LIFT/L	1
56	1342-402-006-00	BAND/WIRE/250	10



Followings are the exclusive parts for SBC550X-3LRE4

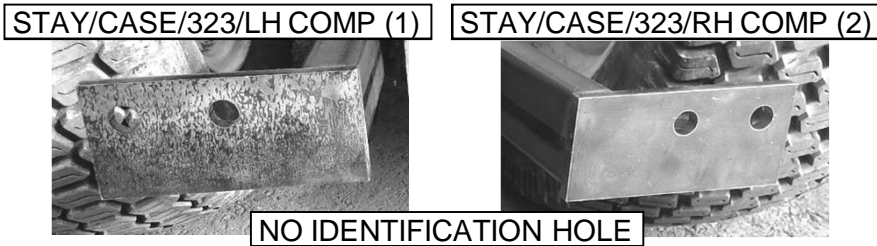


**\*PARTS LIST (E)**

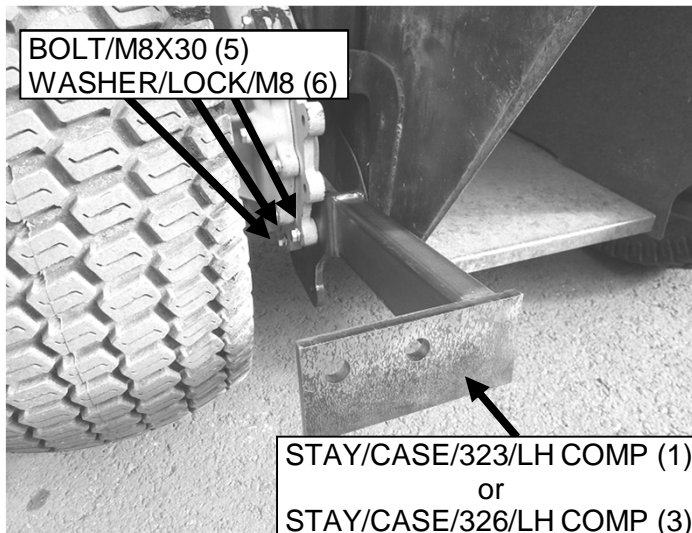
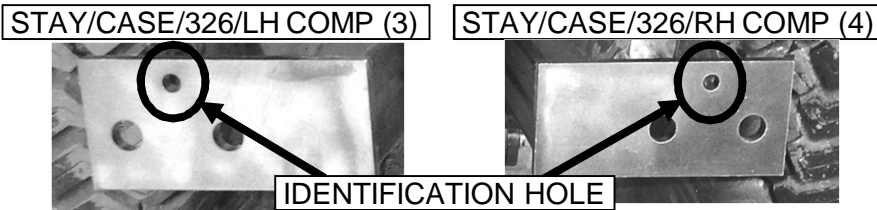
No.	Parts No.	Part name	Qty
57	8664-156-330-00	ROPS COMP	1
58	8664-156-031-00	BOLT/SET/M16X64	2
59	V411-260-016-00	WASHER/M16	2
60	V401-160-016-00	WASHER/LOCK/M16	2
61	V304-260-016-00	NUT/M16	2
62	8664-156-032-00	PIN/20X66	2
63	V720-112-401-80	RING/O/P18	2
64	1673-525-002-30	LINK PIN	2
65	V720-101-900-90	RING/O/P9	2
66	W201-261-005-00	BOLT/M10X50	2
67	V304-260-010-00	NUT/M10	2
68	8664-156-350-00	FRAME/CENTER COMP	1
69	3853-560-001-00	BOLT/M12X30	4
70	V401-160-012-00	WASHER/LOCK/M12	4

2. Installation of STAY/CASE COMP

**for SXG323**

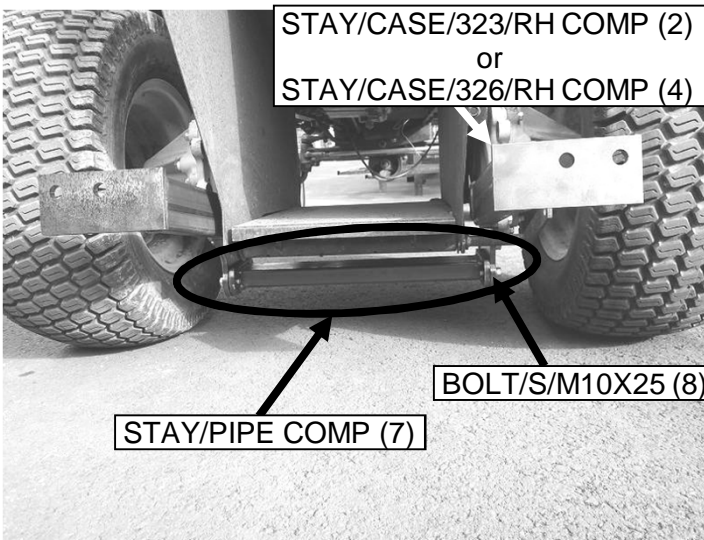


**for SXG326**



**for SXG323**  
Assemble STAY/CASE/323/LH COMP (1) with 3 pcs of BOLT/M8X30 (5) and WASHER/LOCK/M8 (6) temporarily.

**for SXG326**  
Assemble STAY/CASE/326/LH COMP (3) with 3 pcs of BOLT/M8X30 (5) and WASHER/LOCK/M8 (6) temporarily.

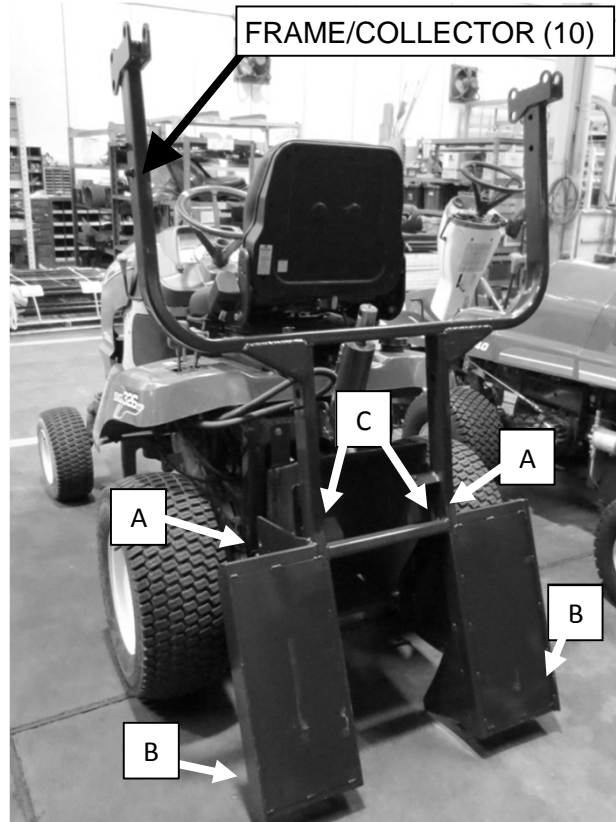


**for SXG323**  
Assemble STAY/CASE/323/RH COMP (2) with 3 pcs of BOLT/M8X30 (5) and WASHER/LOCK/M8 (6) temporarily.

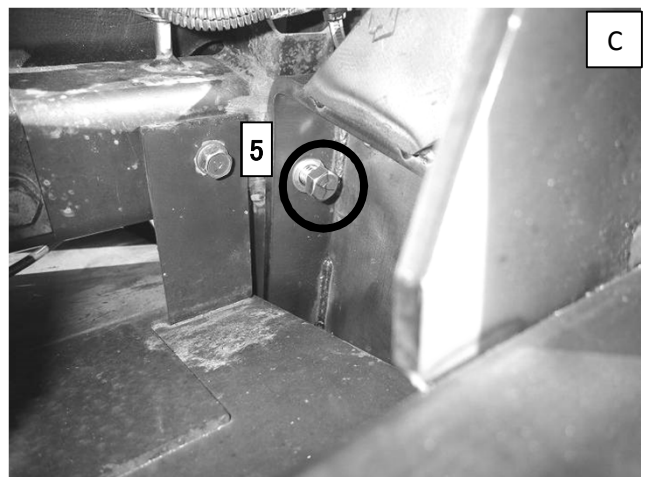
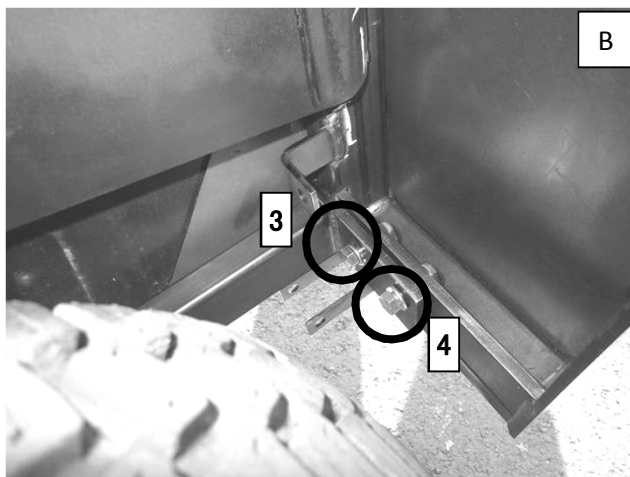
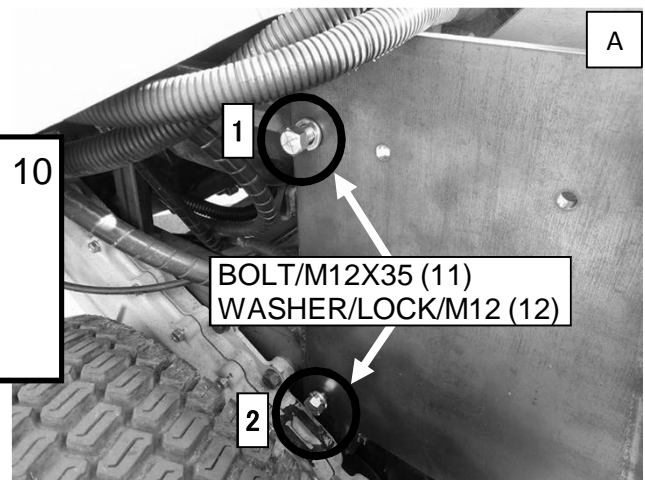
**for SXG326**  
Assemble STAY/CASE/326/RH COMP (4) with 3 pcs of BOLT/M8X30 (5) and WASHER/LOCK/M8 (6) temporarily.

Assemble STAY/PIPE COMP (7) with 2 pcs of BOLT/S/M10X25 (8) temporarily on both right and left sides.

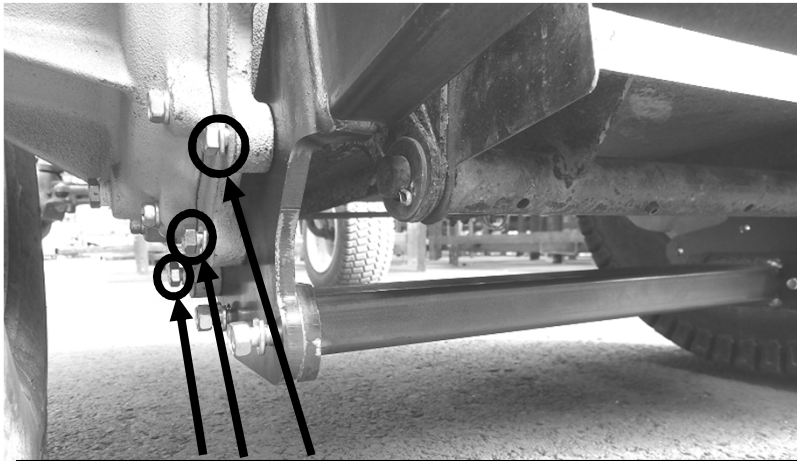
### 3. Installation of FRAME/COLLECTOR



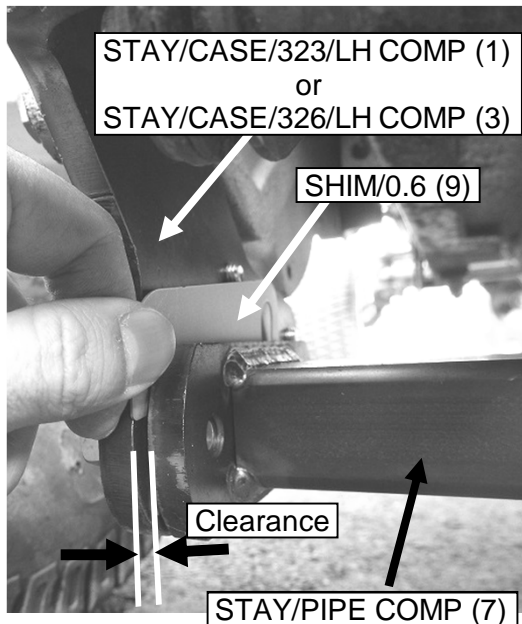
Install FRAME/COLLECTOR (10) with 10 pcs of BOLT/M12X35 (11) and WASHER/LOCK/M12 (12).  
\*Tightening torque:  
**M12 (10T): 117.6~137.2 N·m**



#### 4. Tighten BOLTs and install SHIMs



Tighten 3 pcs of BOLT/M8X30 (5) and WASHER/LOCK/M8 (6) on both right and left sides.  
\*Tightening torque: **M8 (10T): 33.3~43.1 N·m**

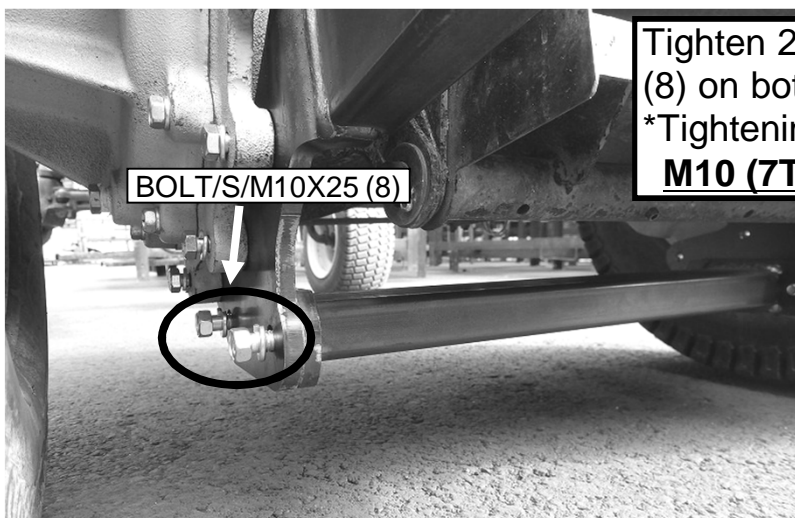


#### **for SXG323**

After tightening BOLT/M8X30 (5), if there has a clearance between STAY/CASE/323/LH COMP (1) and STAY/PIPE COMP (7), install SHIM/0.6 (9) as much as possible.  
\*Thickness of shim: **0.6 mm**

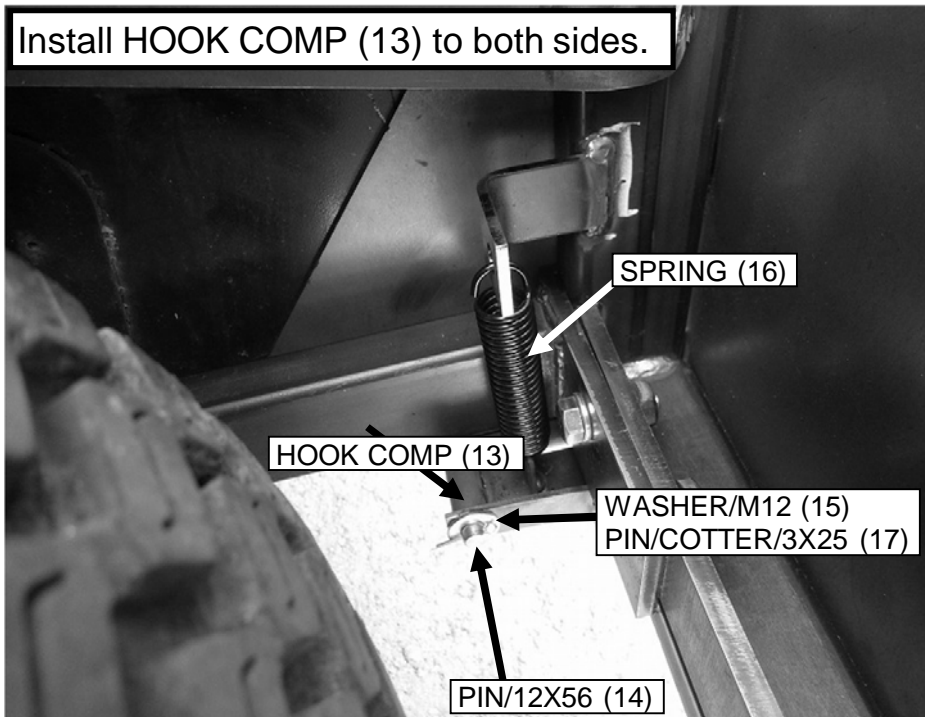
#### **for SXG326**

After tightening BOLT/M8X30 (5), if there has a clearance between STAY/CASE/326/LH COMP (3) and STAY/PIPE COMP (7), install SHIM/0.6 (9) as much as possible.  
\*Thickness of shim: **0.6 mm**

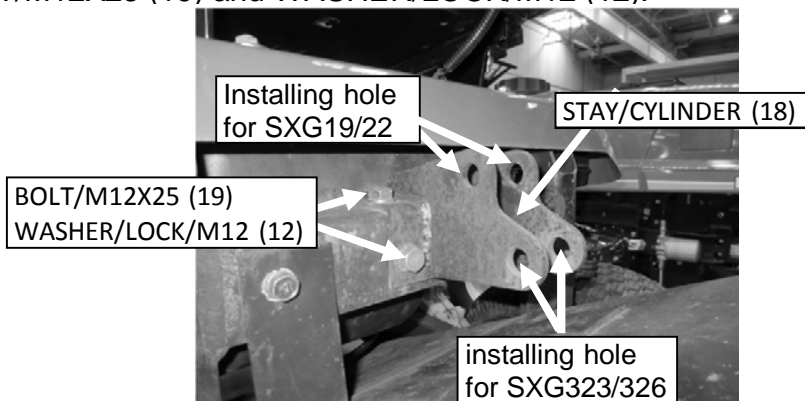


Tighten 2 pcs of BOLT/S/M10X25 (8) on both right and left sides.  
\*Tightening torque:  
**M10 (7T): 45.1~57.9 N·m**

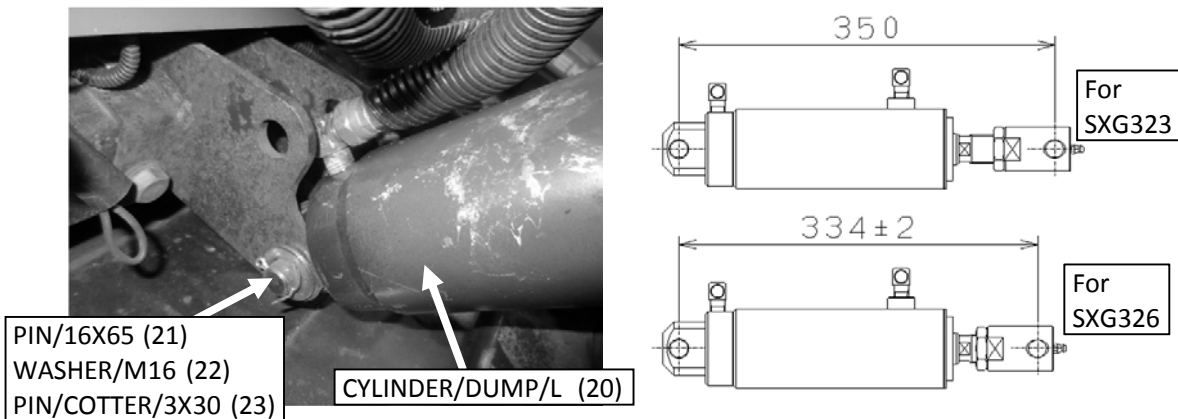
5. Installation of HOOK COMP (both right and left sides)
  - a. Hook SPRING (16) between FRAME and HOOK COMP (13)
  - b. Fix HOOK COMP (13) with PIN/12X56 (14), WASHER/M12 (15) and PIN/COTTER/3X25 (17)



6. Install STAY/CYLINDER (18) to the rear part of frame with 4 pcs of BOLT/M12X25 (19) and WASHER/LOCK/M12 (12).



7. Install CYLINDER/DUMP/L (20) to the STAY/CYLINDER (18) with PIN/16X65 (21), WASHER/M16 (22) and PIN/COTTER/3X30 (23).

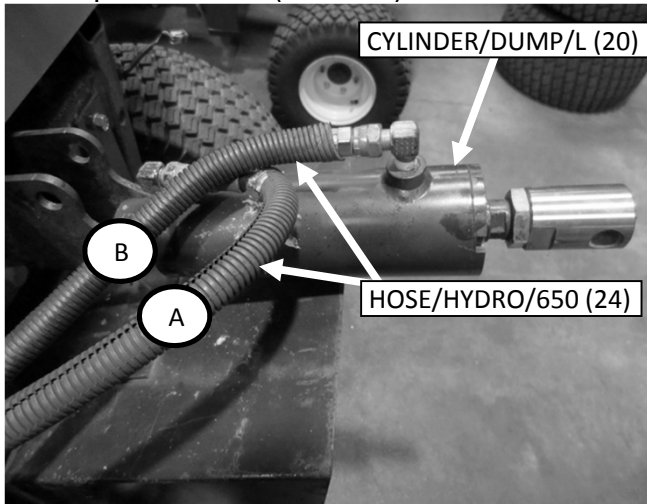


\*In case of SXG326, set the installing pitch of CYLINDER/DUMP/L (20) as 334±2mm before installing.

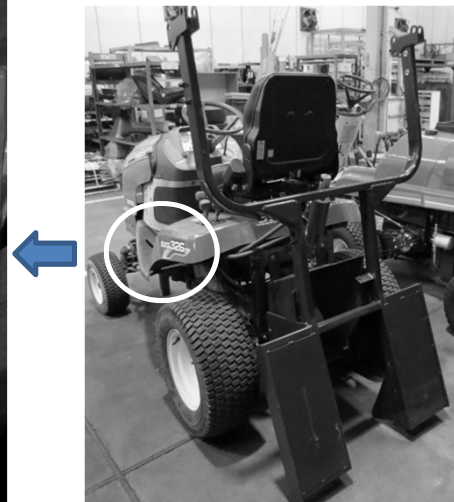
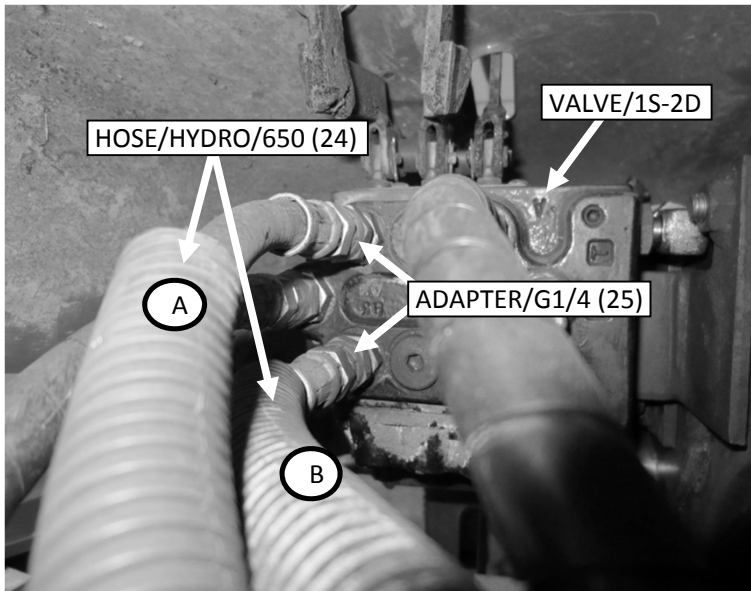
\*No need to adjust for SXG323.



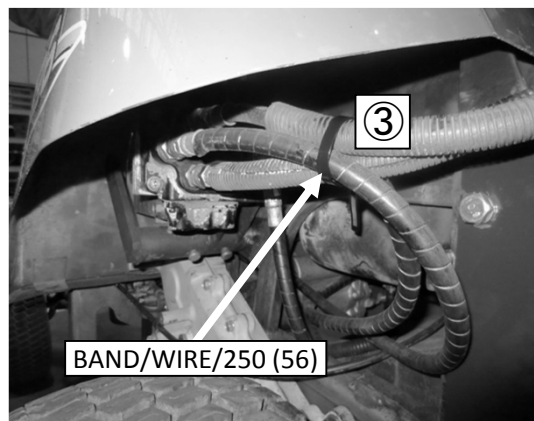
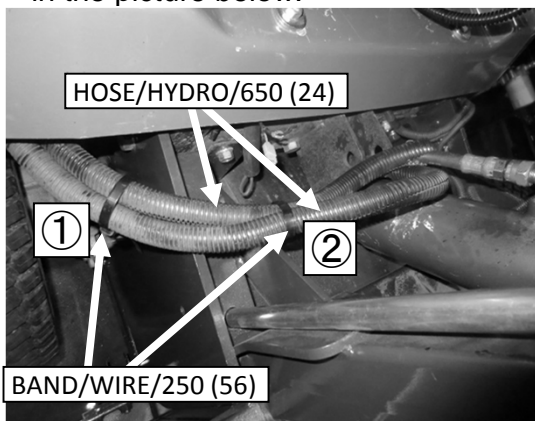
8. Install 2 pcs of HOSE/HYDRO/650 (24) to CYLINDER/DUMP/L (20) as shown in the picture below(A and B).



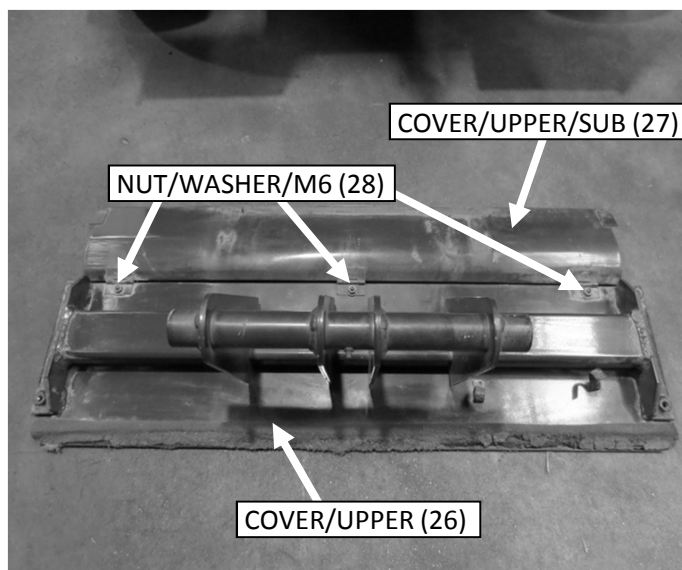
Install 2 pcs of ADAPTER/G1/4 (25) to VALVE/1S-2D. ADAPTER/G1/4 (25) as shown in the picture below(A and B).



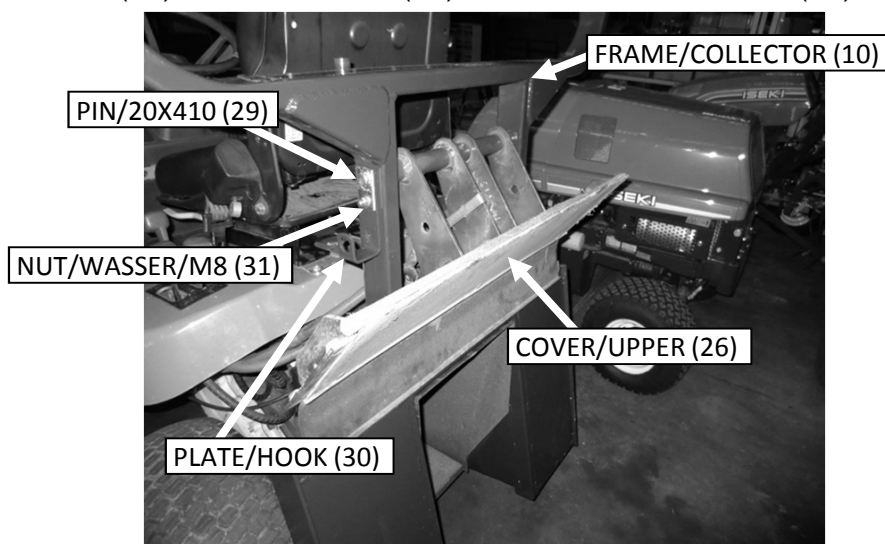
9. Bundle HOSE/HYDRO/650 (24) with 3 pcs of BAND/WIRE/250 (56) as shown in the picture below.



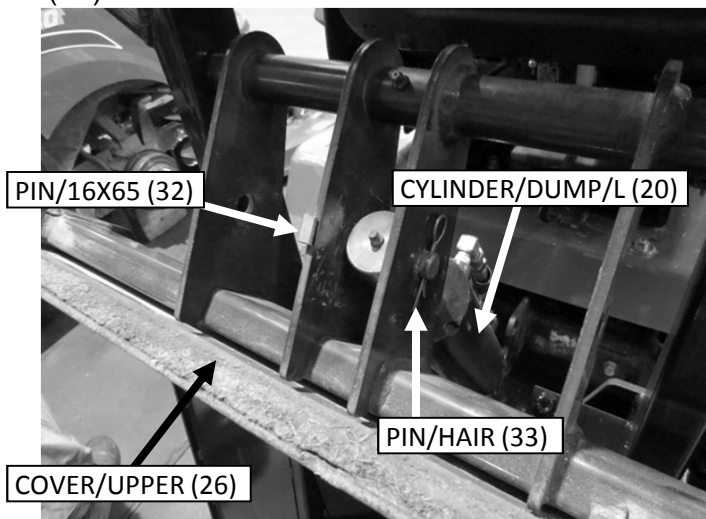
10. Install COVER/UPPER/SUB (27) to COVER/UPPER (26) with 3 pcs of NUT/WASHER/M6 (28).



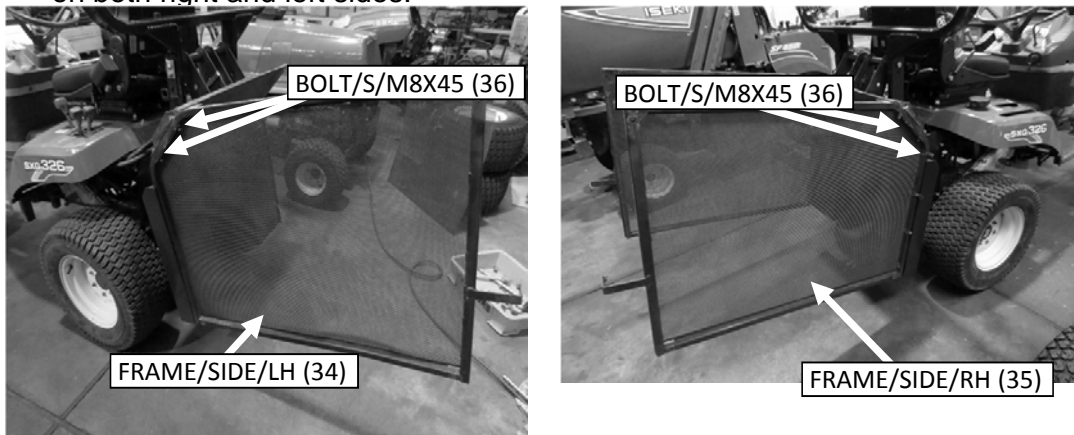
11. Install COVER/UPPER (26) to FRAME/COLLECTOR (10) with PIN/20X410 (29), PLATE/HOOK (30) and NUT/WASSER/M8 (31).



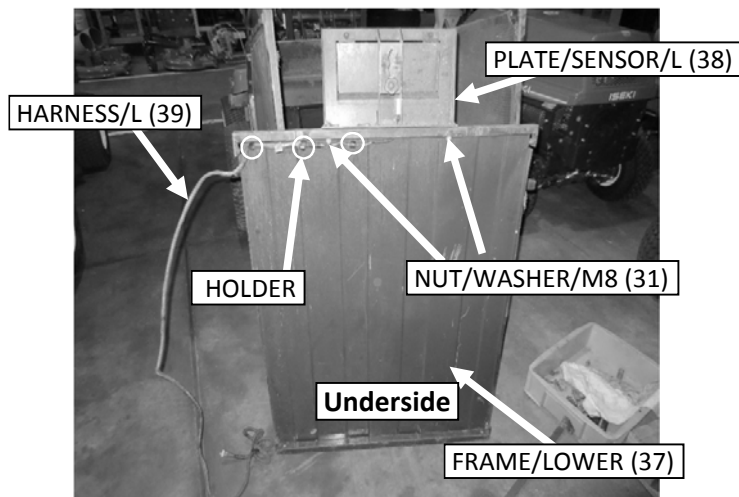
12. Install CYLINDER/DUMP/L (20) to COVER/UPPER (26) with PIN/16X65 (32) and PIN/HAIR (33).



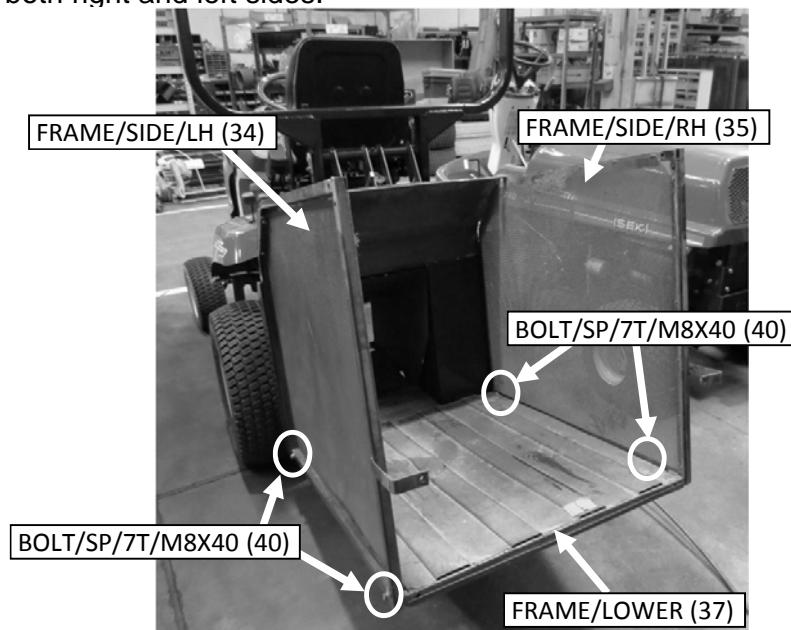
13. Install FRAME/SIDE/LH (34) and FRAME/SIDE/RH (35) to COVER/UPPER (26) with 2 pcs of BOLT/S/M8X45 (36) temporarily on both right and left sides.



14. Install PLATE/SENSOR/L (38) to FRAME/LOWER (37) with 2 pcs of NUT/WASHER/M8 (31). Connect HARNESS/L (39) to PLATE/SENSOR/L (38), and then fix it with 3 pcs of HOLDER.

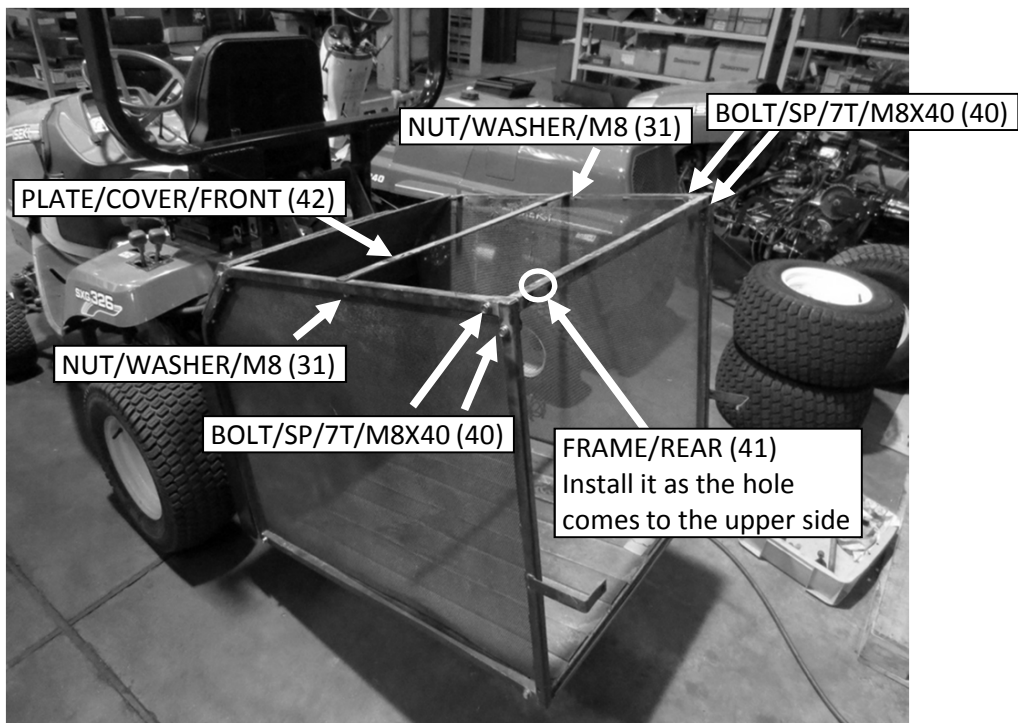


15. Install FRAME/LOWER (37) to FRAME/SIDE/LH (34) and FRAME/SIDE/RH (35) with 2 pcs of BOLT/SP/7T/M8X40 (40) temporarily on both right and left sides.

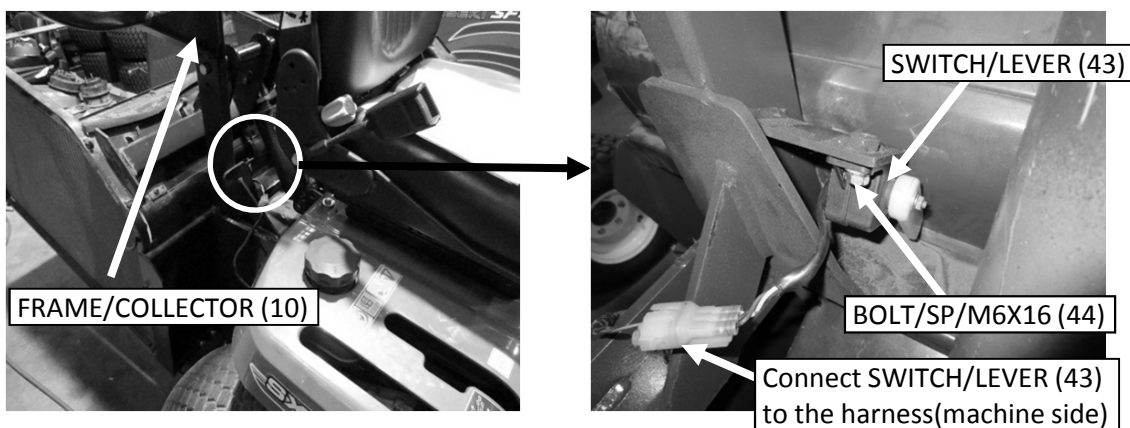




16. Install FRAME/REAR (41) between FRAME/SIDE/LH (34) and FRAME/SIDE/RH (35) with BOLT/SP/7T/M8X40 (40) temporally on both right and left sides.  
Install PLATE/COVER/FRONT (42) between FRAME/SIDE/LH (34) and RH (35) with 1 pc of NUT/WASHER/M8 (31) temporally on both right and left sides.



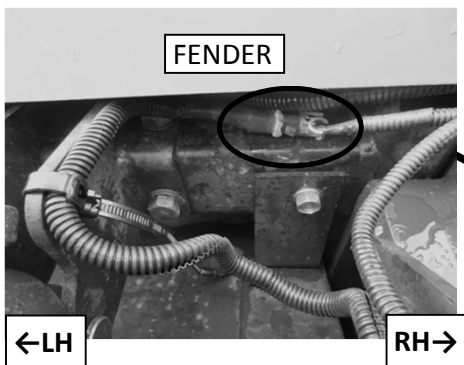
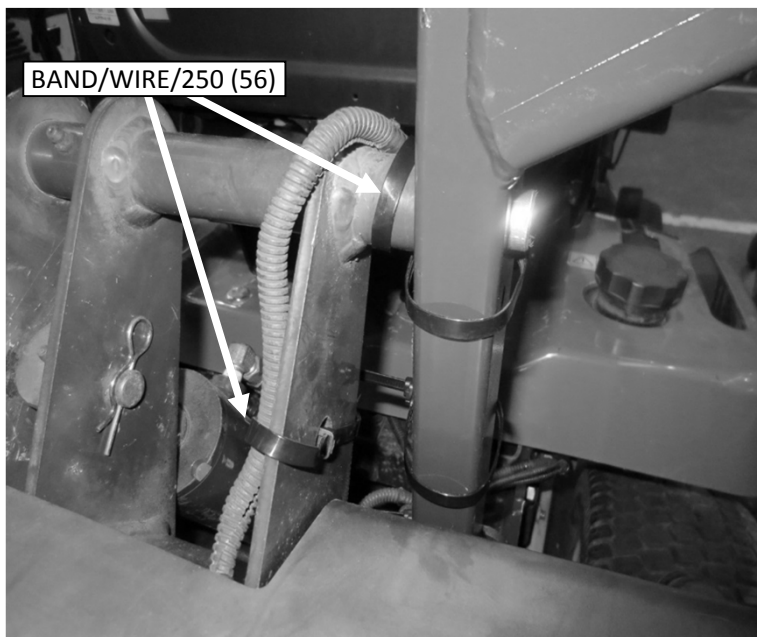
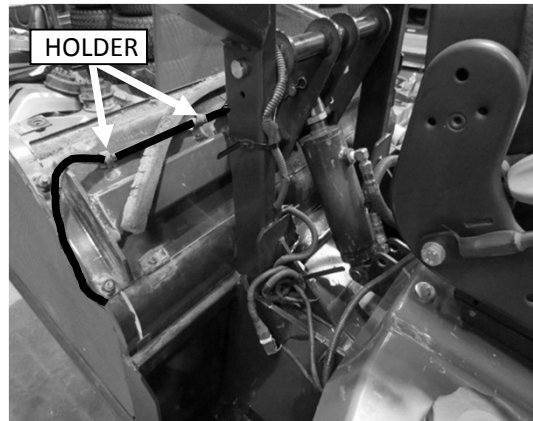
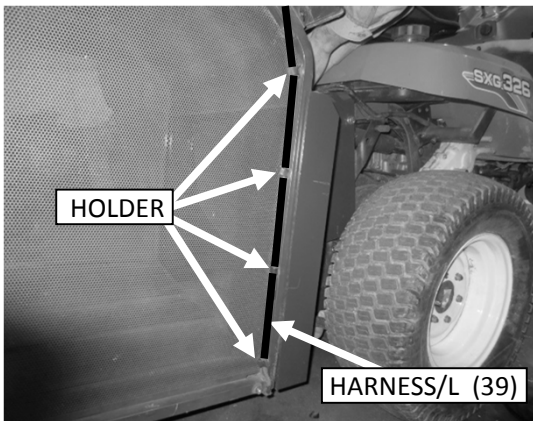
17. Tighten all the bolts completely which were tightened temporally in the "Step 13, 15 and 16".
18. Install SWITCH/LEVER (43) to FRAME/COLLECTOR (10) with BOLT/SP/M6X16 (44).  
Connect the SWITCH/LEVER (43) to the harness(machine side).



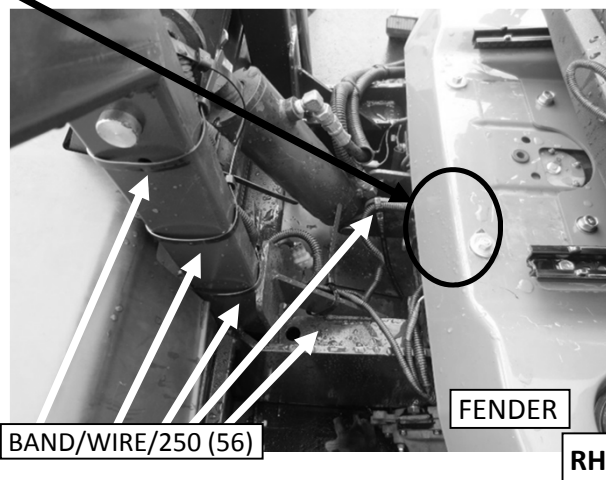
19. Fix HARNESS/L (39) with HOLDERS.

Arrange HARNESS/L (39) with 7 pcs of BAND/WIRE/250 (56).

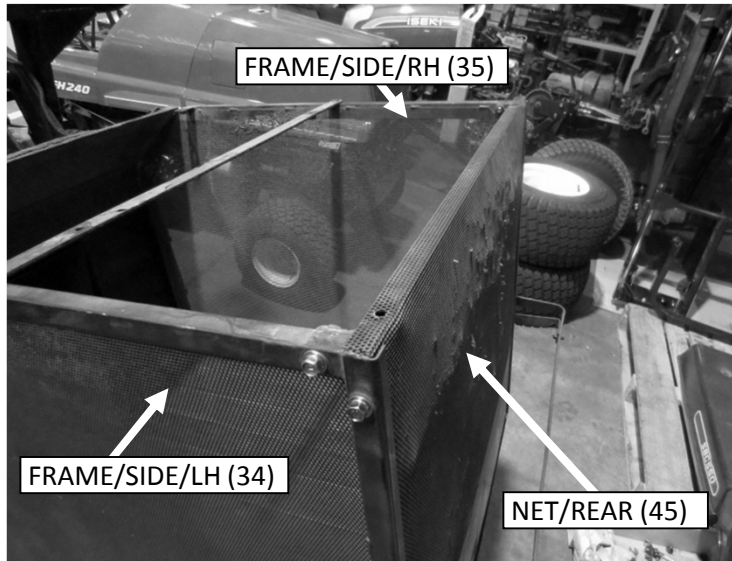
Connect HARNESS/L (39) to the harness(machine side) located at bottom part of FENDER RH side, and then put the Connector into the Fender.



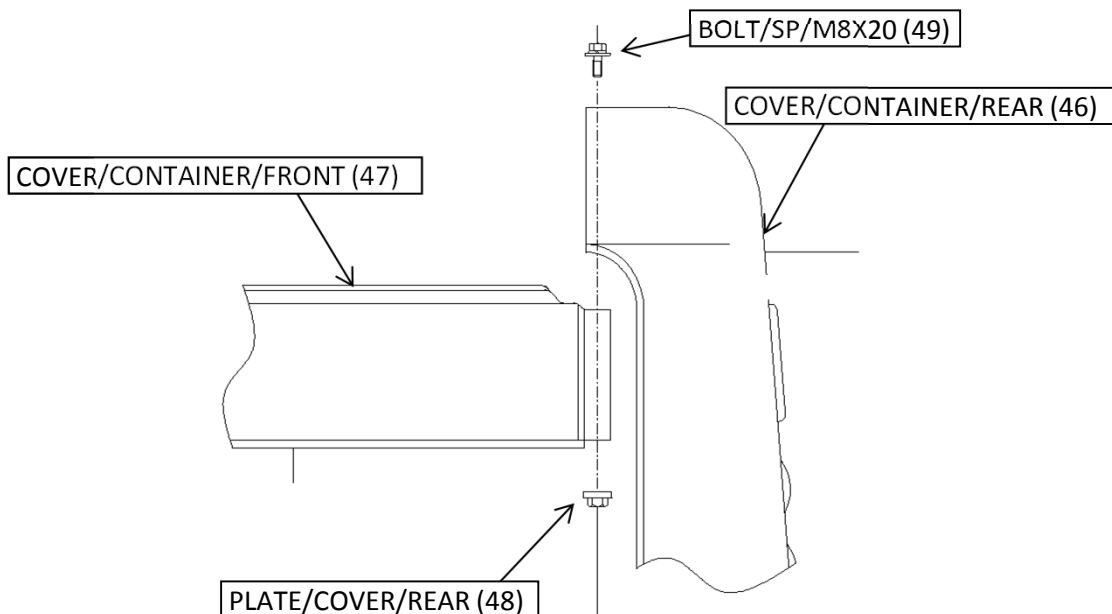
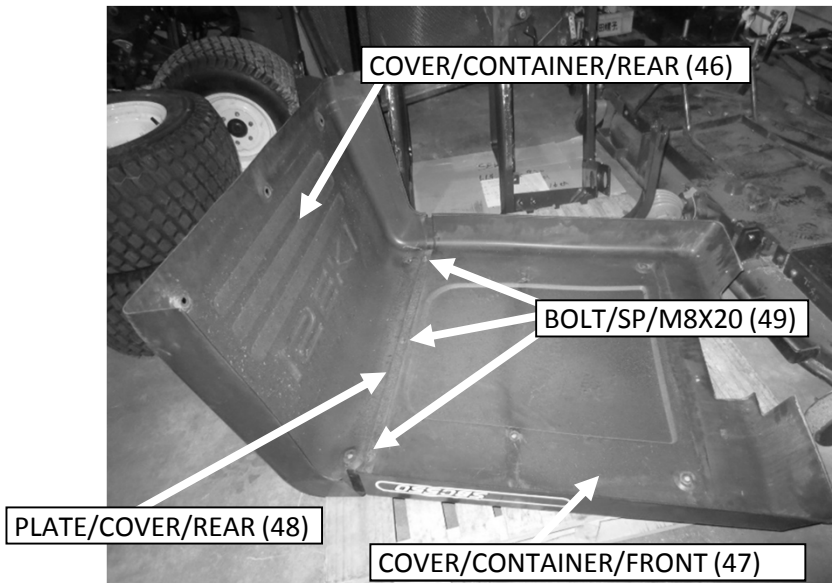
Connect HARNESS/L (39) to harness(machine side). After connecting, put it into the FENDER.



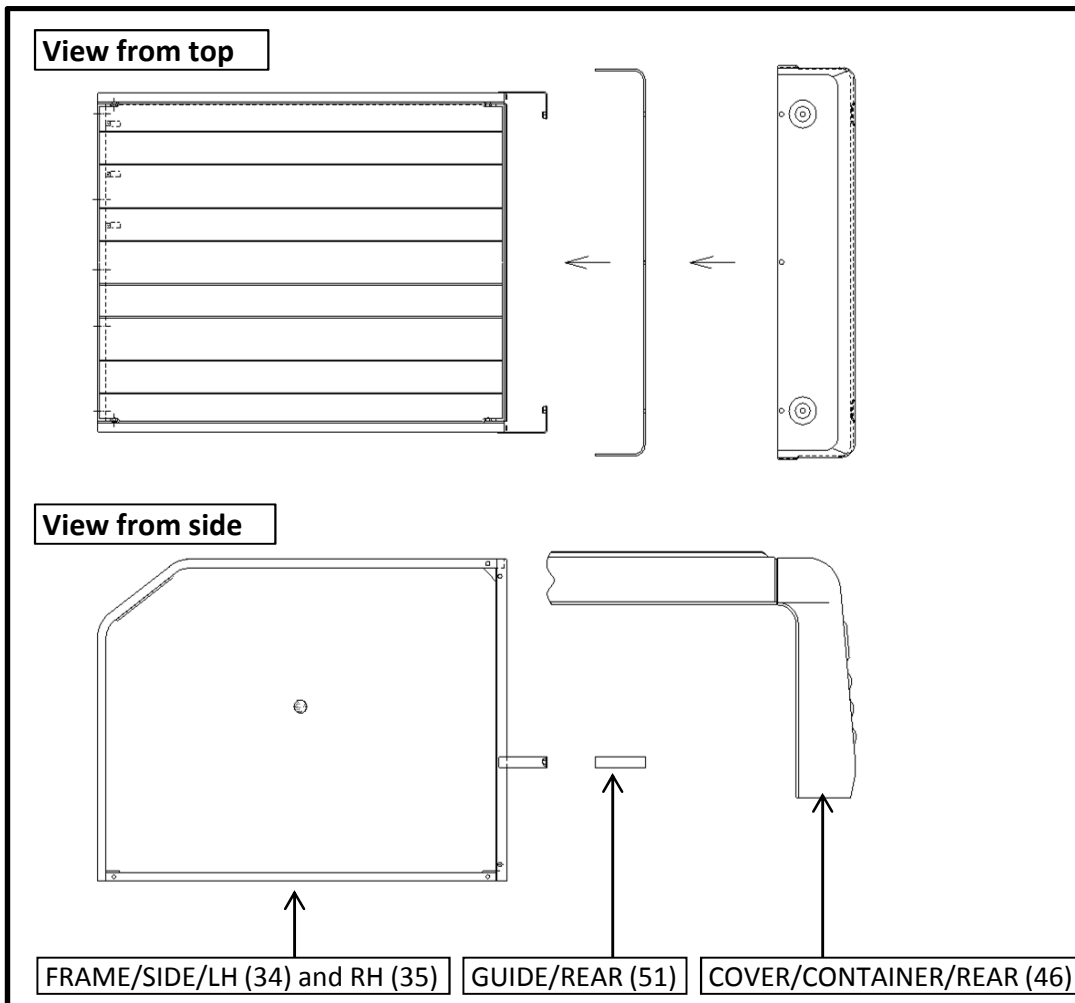
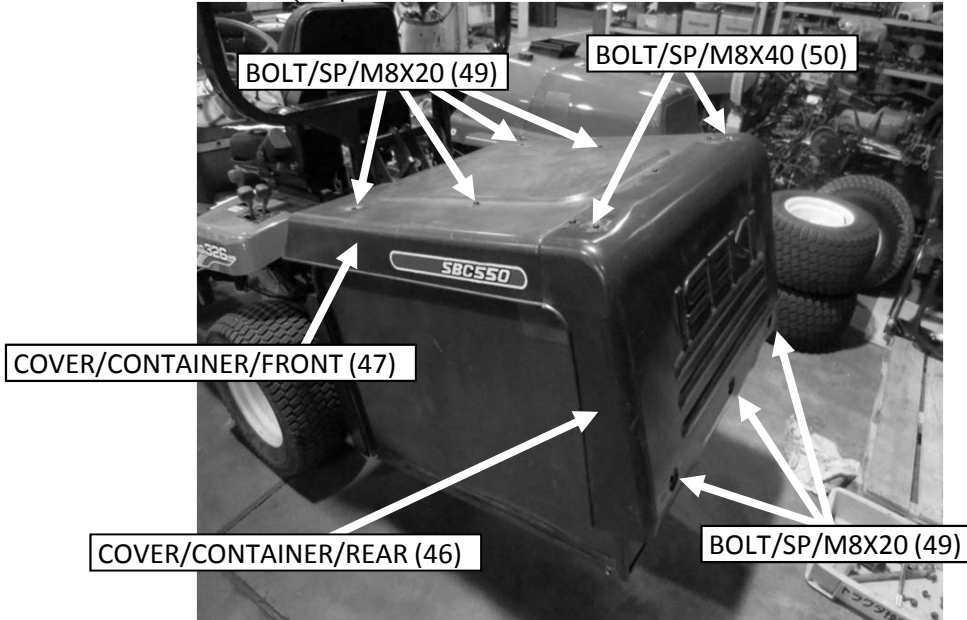
20. Insert NET/REAR (45) between FRAME/SIDE/LH (34) and FRAME/SIDE/RH (35).



21. Install COVER/CONTAINER/FRONT (47) and PLATE/COVER/REAR (48) to COVER/CONTAINER/REAR (46) with 3 pcs of BOLT/SP/M8X20 (49).



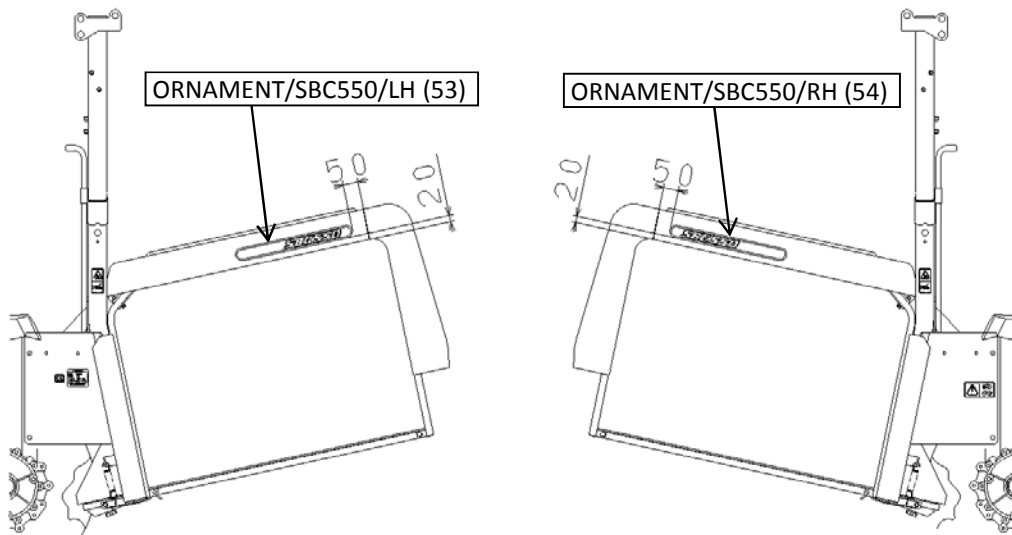
22. Install COVER/CONTAINER/FRONT (47) to FRAME/SIDE/LH (34), FRAME/SIDE/RH (35) and PLATE/COVER/FRONT (42) with 2 pcs of BOLT/SP/M8X20 (49).  
 Install COVER/CONTAINER/REAR (46) to FRAME/REAR (41) with 2 pcs of BOLT/SP/M8X40 (50).  
 Assemble FRAME/SIDE/LH (34) and FRAME/SIDE/RH (35), COVER/CONTAINER/REAR (46) and GUIDE/REAR (51) with 3 pcs of BOLT/SP/M8X20 (49).



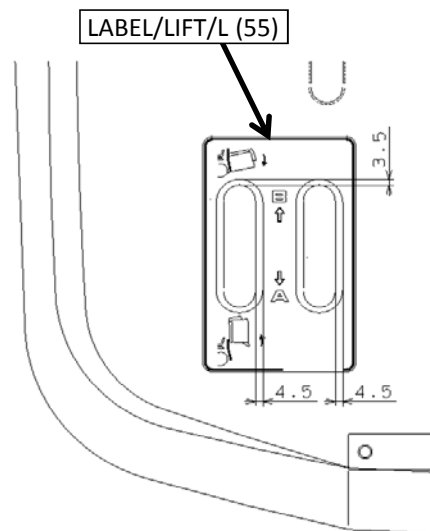
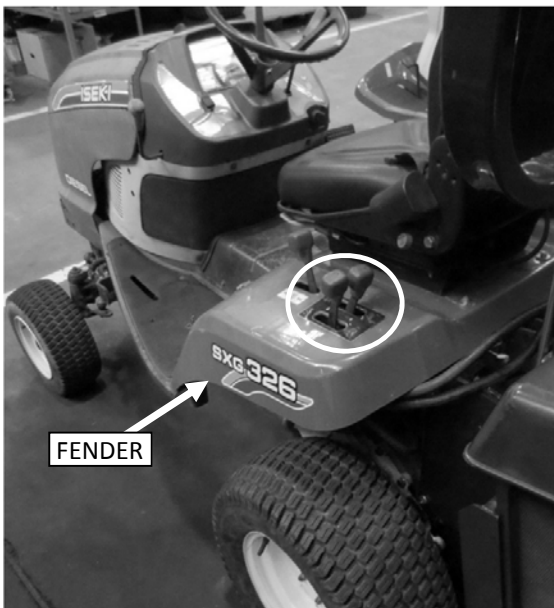
23. Insert BAR (52) into the pipe part of FRAME/COLLECTOR (10).



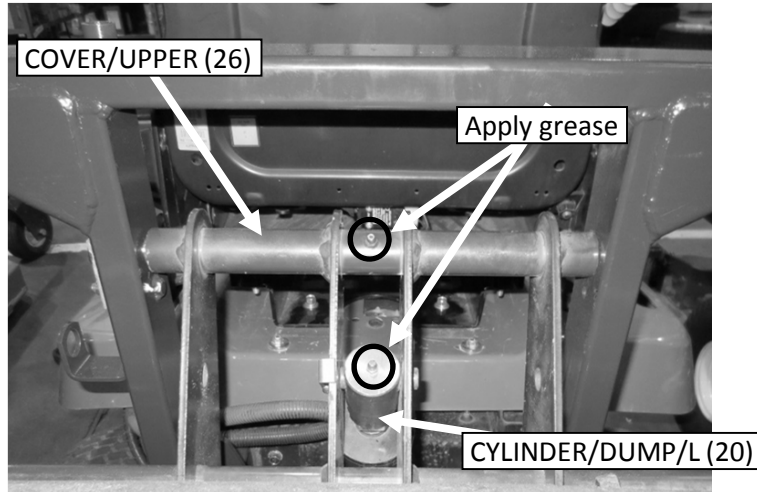
24. Clean the surface of COVER/CONTAINER/FRONT (47), and then attach ORNAMENT/SBC550/LH (53) and ORNAMENT/SBC550/RH (54) to the position as shown in the figure below.



25. Remove the attached Sub Control Label from the FENDER and clean the surface where the label was attached, and then attach LABEL/LIFT/L (55).



26. Inject grease into CYLINDER/DUMP/L (20) and COVER/UPPER (26).



27. Check the operation of COLLECTOR.

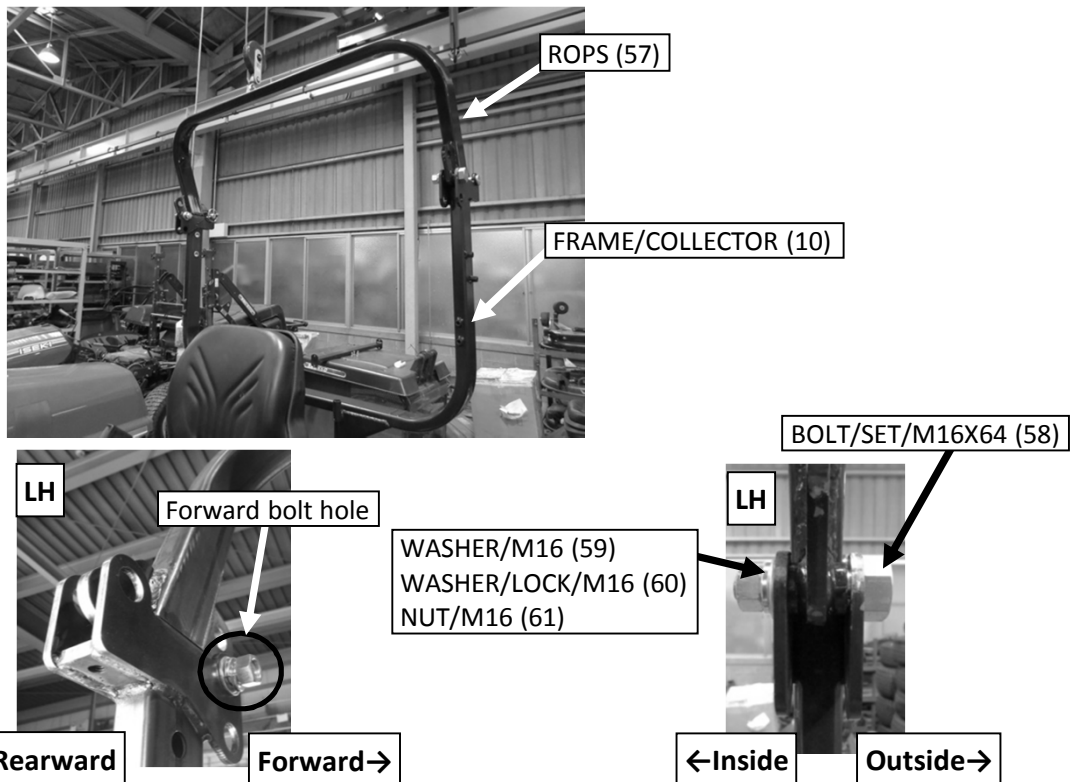
- a. Start the engine, and then move the Lift lever and Dump lever and make sure that the COLLECTOR ASSY operates normally.
- b. Start the engine, and then lift up the Container and stop the engine. Set the key at "ON" position(don't start the engine) and move the PTO lever to "ON" position. In this state, make sure that the buzzer sounds when PLATE/SENSOR is pushed.
- c. Start the engine and lift up the Container. In this state, makes sure that the engine stops when PTO lever is moved to "ON" position.
- d. After checking the operation of COLLECTOR, check the amount of the transmission oil.

## In case of SBC550X-3LRE4

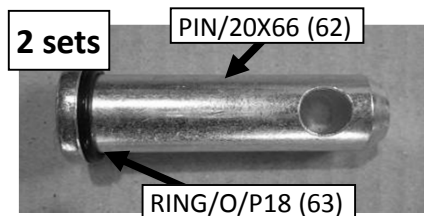
### 28. Installation of ROPS COMP

Set ROPS (57) to FRAME/COLLECTR (10) as shown in the figure below.

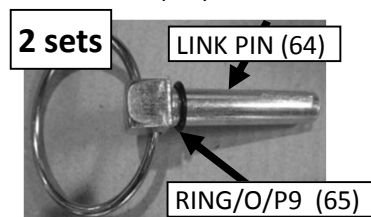
Fix ROPS (57) to the forward bolt hole of FRAME/COLLECTOR (10) on both right and left sides with BOLT/SET/M16X64 (58), WASHER/M16 (59), WASHER/LOCK/M16 (60) and NUT/M16 (61).



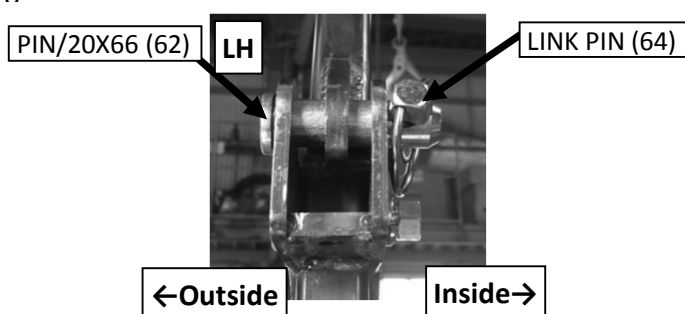
### 29. Install RING/O/P18 (63) to PIN/20X66 (62).



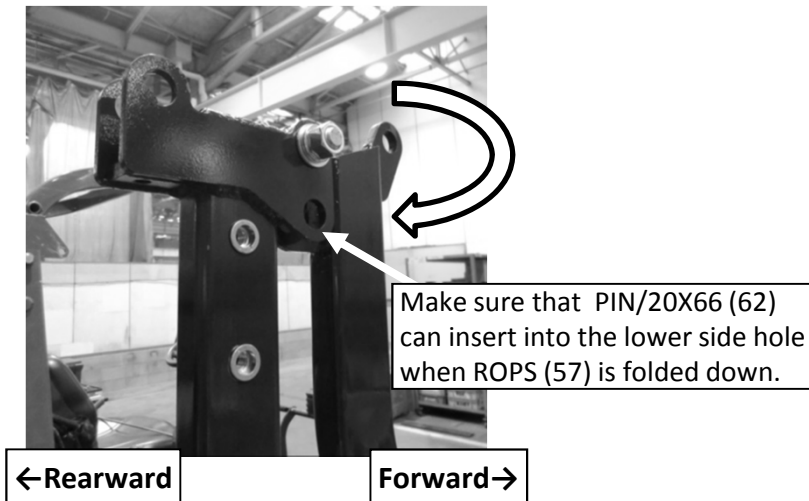
### 30. Install RING/O/P9 (65) to LINK PIN (64).



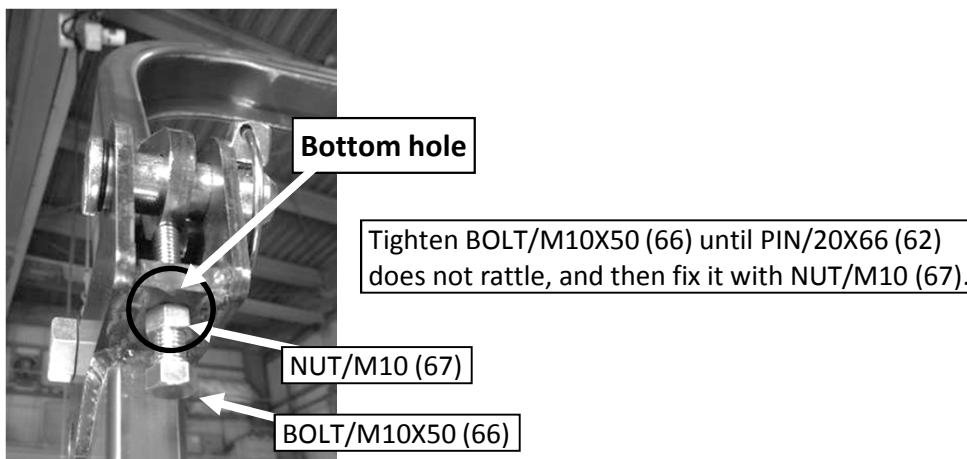
### 31. Install PIN/20X66 (62) and LINK PIN (64) to the backward hole of FRAME/COLLECTOR (10) and ROPS (57) on both right and left sides as shown in the figure below.



32. Remove PIN/20X66 (62) and LINK PIN (64) on both right and left sides. Make sure that ROPS (57) can rotate smoothly.



33. Raise ROPS (57) and fix it with PIN/20X66 (62) and LINK PIN (64) on both sides. Insert BOLT/M10X50 (66) into the bottom hole of FRAME/COLLECTOR (10) on both right and left side, and then tighten it until PIN/20X66 (62) does not rattle. Then fix it with NUT/M10 (67).



34. Install FRAME/CENTER (68) to FRAME/COLLECTOR (10) with 2 pcs of BOLT/M12X30 (69) and WASHER/LOCK/M12 (70) on both right and left side.

