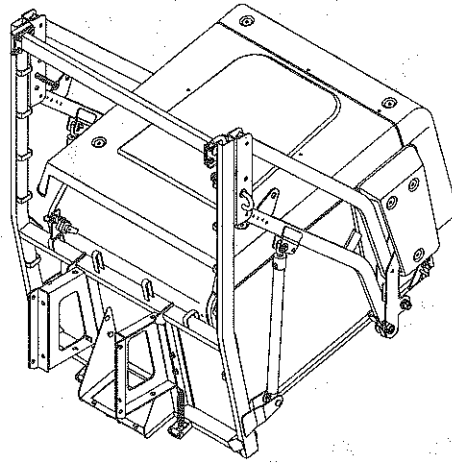
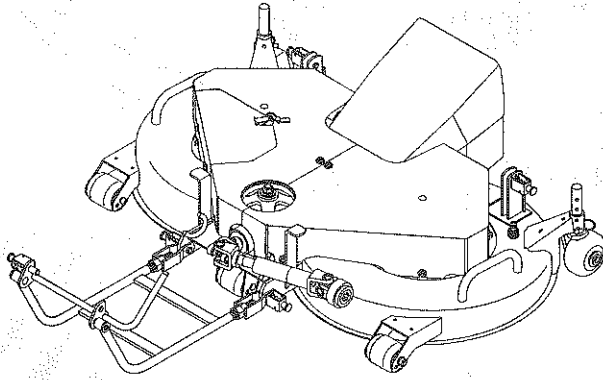




# Parts Catalogue



**MOWER**

**SCMA48M  
SCMA54M**

**COLLECTOR**

**SBC550XM**

---

SCMA48- SXG22E4M

SCMA54- SXG22E4M

SBC550X-HE4M,  
LE4M

**8663-097-110-00**

Printed in Japan January, 2006

originally equipped parts.

- ⑤ Upper column : QTY shows the number of parts to be used for one unit of machine.

`M` is indicated for parts supplied by a meter long.

`l` is indicated for parts supplied by liter.

`AR` is indicated for parts need to be adjusted or regulated.

Lower column : serial number

-229 means serial number up to 229.

230- means serial number 230 and after.

- ⑥ ITC : Interchangeability

`1` ...OLD ← NEW

New parts can be used in place of the old parts.

`2` ...OLD → NEW

Old parts can be used in place of the new parts.

`3` ...OLD →← NEW

Old parts and new parts can not be replaced each other.

- ⑦ COL : Color code

Color is signified with color code number for colored parts.

Please see the color list shown in the next page.

- ⑧ GRP : Parts shown in this column can be replaced by SET parts.

Example : Parts marked Ⓐ can be replaced by parts marked Ⓑ, and Ⓓ for Ⓒ, so the rest follow in the same alphabetical order.

- ⑨ Remarks

\* Other maker's part code number is shown in this column.

\* When Fig. No. is shown in the Remark column of SET parts or ASSY parts, each of their component parts are listed in said Fig. No.

### 3. Color :

The following colors are used color parts.

COLOR CODE	COLOR	SPRAY TYPE CODE NUMBER	PAINTS 4K DRUM	PAINTS 16K DRUM
7 F	MIRROR BLACK	1300-954-001-10	1300-954-003-00	1300-954-004-00

NOTE : Color code is signified only for the parts assigned by the maker as color parts.

#### 4. Serial Numbers :

For chassies serial number is shown on the LABEL.

Please see



#### 5. Parts Order

- 1) Parts numbers listed in the parts catalogue are all registered in "ISEKI on-line computer" .
- 2) When you order parts, please make sure of correct numbers.
- 3) When substitute parts is available, the part number ordered will be automatically turned to a new part number.
- 4) Please be sure to use "ISEKI GENUINE PARTS" .

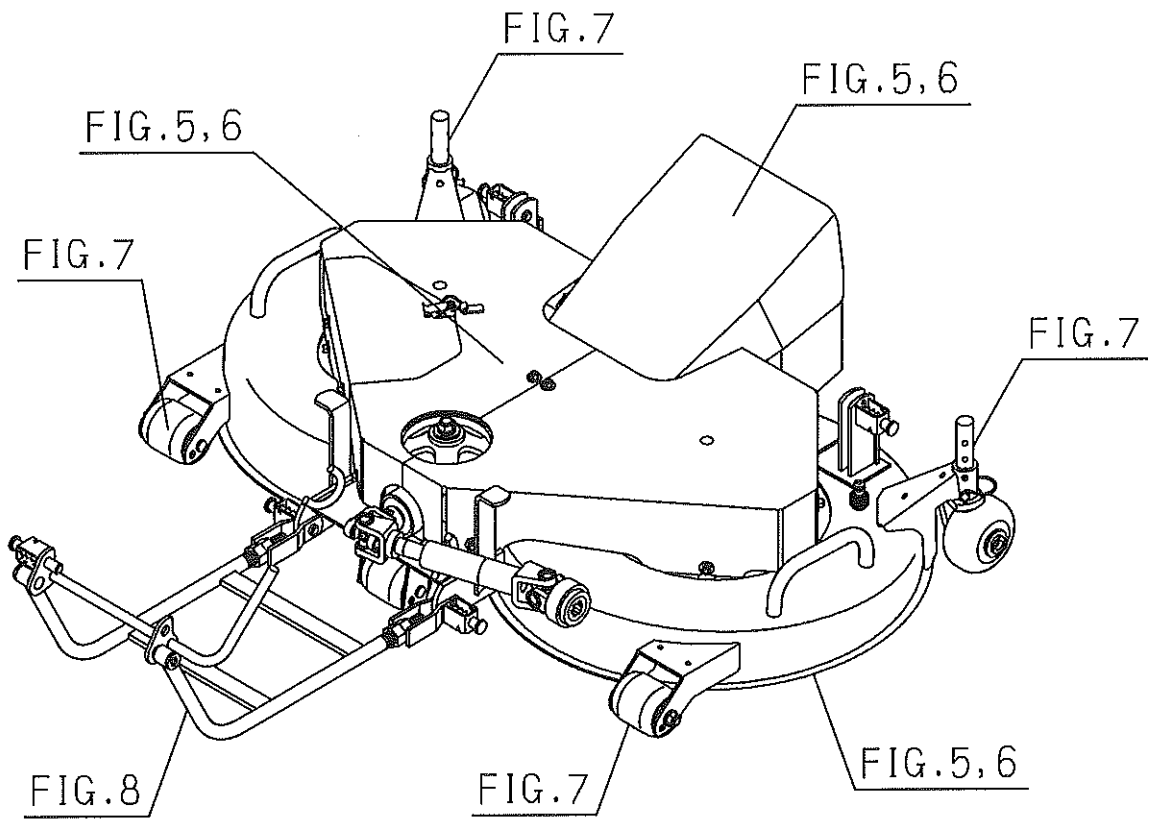
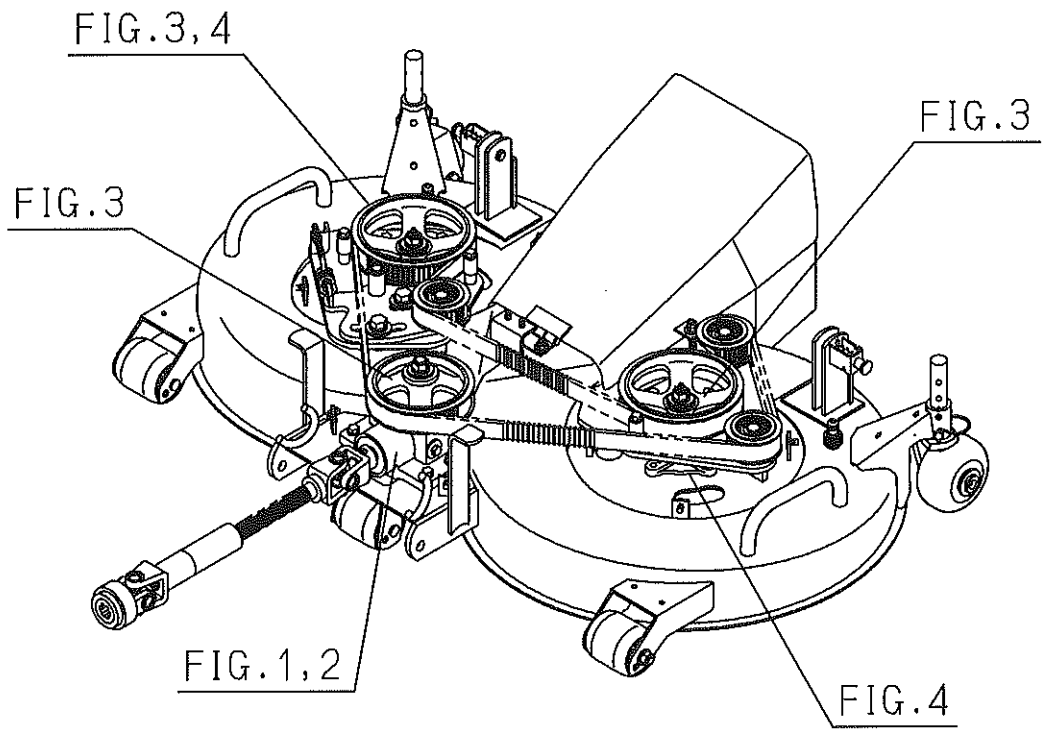
Any other similar parts other than ISEKI parts when used may cause a trouble that makes us unable to repair or guarantee the warrant.

\*\*\* Structure Table of Model \*\*\*

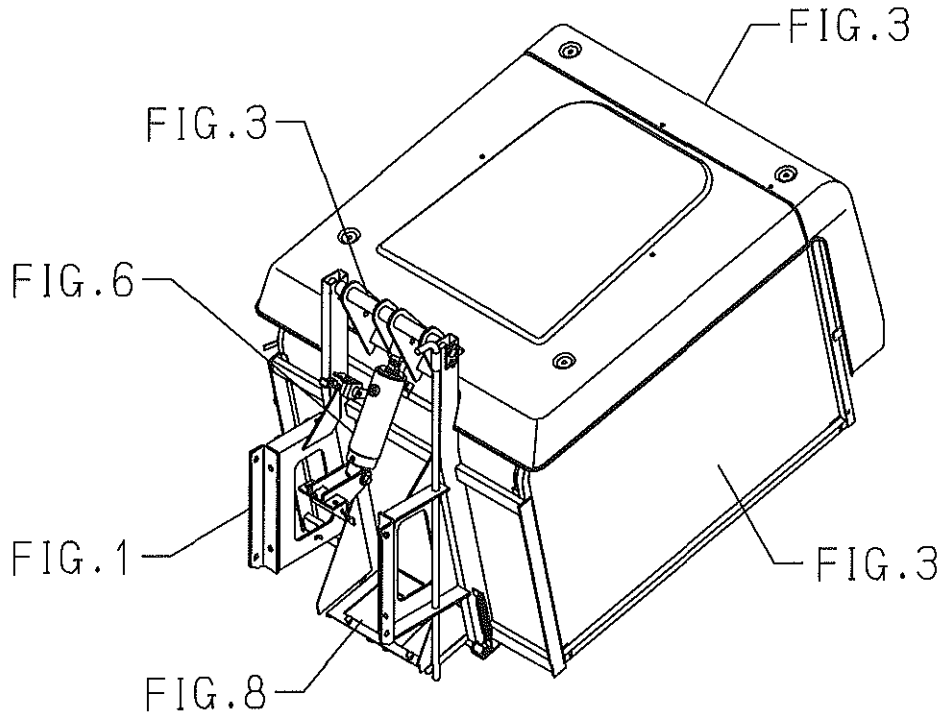
<p>M O D E L</p> <p>FIG.</p>	<p>S S C C M S M S A X A X 4 G 5 G 8 2 4 2 M 2 M 2 E E 4 4 M M</p>											
<p>1 2 3 4 5</p>	<p>* * * * * * *</p>											
<p>6 7 8 9 10</p>	<p>* * * * * * * T</p>											
<p>11 12 13</p>	<p>T * *</p>											

\*\*\* Structure Table of Model \*\*\*

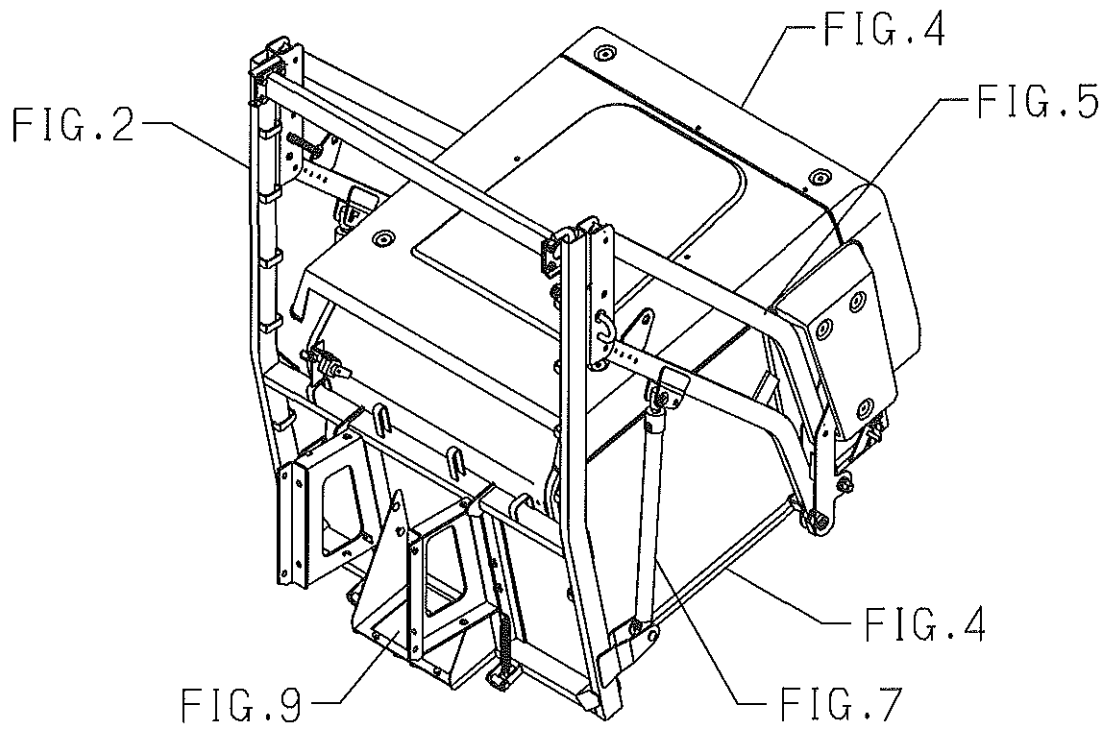
<p style="text-align: center;">M O D E L</p> <p>FIG.</p>	<p>S B C H L 5 E E 5 4 4 0 M M D X M</p>										
<p>1</p> <p>2</p> <p>3</p> <p>4</p> <p>5</p>	<p>*</p> <p>*</p> <p>*</p> <p>*</p> <p>*</p>										
<p>6</p> <p>7</p> <p>8</p> <p>9</p> <p>10</p>	<p>*</p> <p>*</p> <p>*</p> <p>*</p> <p>*</p>										
<p>11</p> <p>12</p> <p>13</p> <p>14</p>	<p>*</p> <p>T</p> <p>T</p> <p>*</p>										



(L TYPE)



(H TYPE)



# Contents

## SCMA48,54

UNIVERSAL JOINT, BEVEL CASE SYSTEM (SCMA54).....	Fig. 1
UNIVERSAL JOINT, BEVEL CASE SYSTEM (SCMA48).....	Fig. 2
PULLEY,BELT SYSTEM.....	Fig. 3
METAL,BLADE SYSTEM.....	Fig. 4
MOWER DECK,COVER SYSTEM (SCMA48).....	Fig. 5
MOWER DECK,COVER SYSTEM (SCMA54).....	Fig. 6
GAUGE WHEEL SYSTEM.....	Fig. 7
LINK SYSTEM.....	Fig. 8
LABEL.....	Fig. 9

## OPTIONAL PARTS

UNIVERSAL JOINT SET (SCMA48-OPTION).....	Fig. 10
UNIVERSAL JOINT SET (SCMA54-OPTION).....	Fig. 11

## COMPONENT PARTS

COMPONENT PARTS FOR 8659-101-210-00 ON Fig.1.....	Fig. 12
COMPONENT PARTS FOR 8662-101-210-00 ON Fig.2.....	Fig. 13



# Contents

## SBC550X

FRAME SYSTEM (L TYPE).....	Fig. 1
FRAME SYSTEM (H TYPE).....	Fig. 2
CONTAINER SYSTEM (L TYPE).....	Fig. 3
CONTAINER SYSTEM (H TYPE).....	Fig. 4
LINK SYSTEM (H TYPE).....	Fig. 5
CYLINDER SYSTEM (L TYPE).....	Fig. 6
CYLINDER SYSTEM (H TYPE).....	Fig. 7
SENSOR SYSTEM (L TYPE).....	Fig. 8
SENSOR SYSTEM (H TYPE).....	Fig. 9
LABEL (L TYPE).....	Fig. 10
LABEL (H TYPE).....	Fig. 11

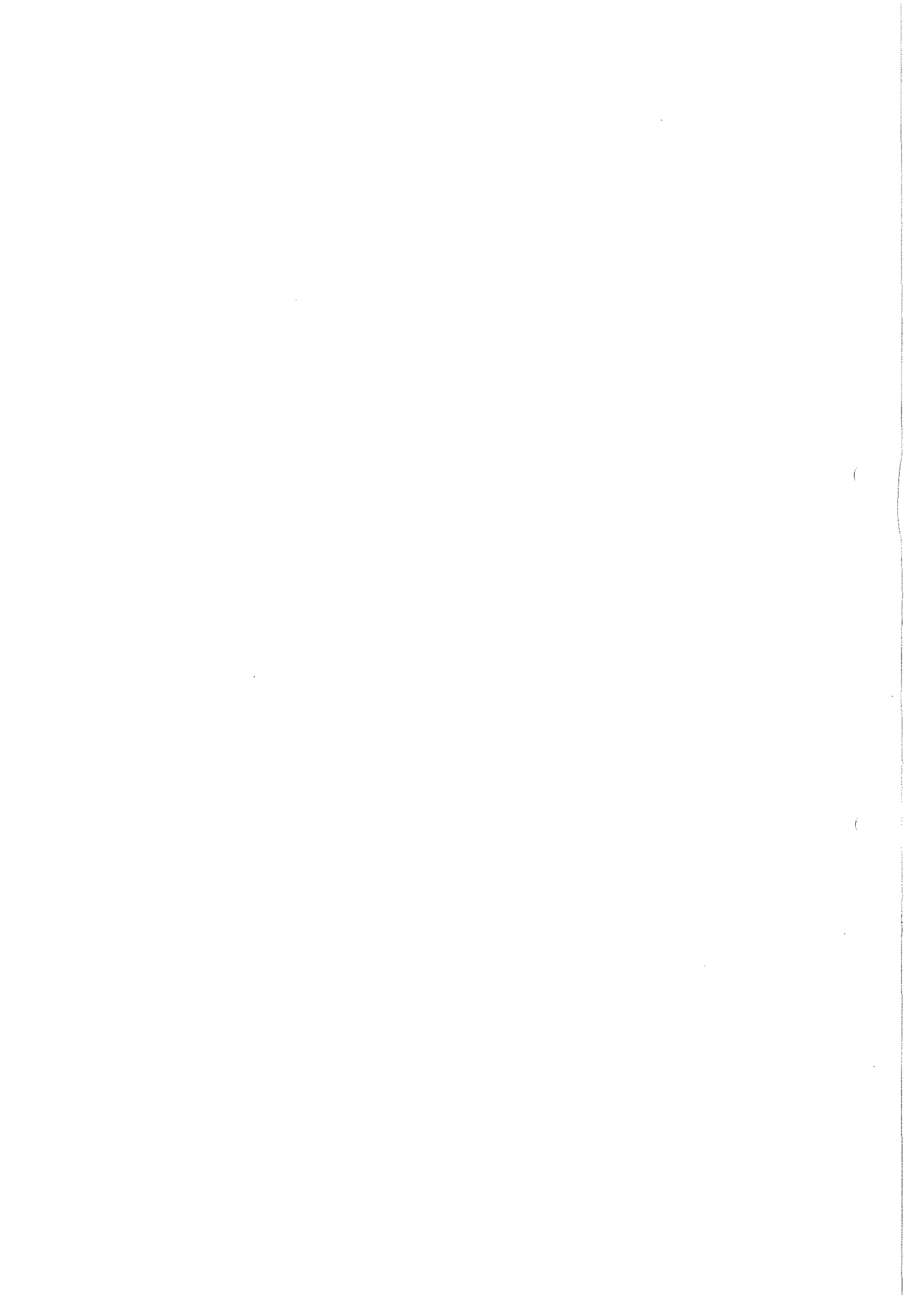
## OPTIONAL PARTS

DISCHARGE SET (L TYPE-OPTION).....	Fig. 12
DISCHARGE SET (H TYPE-OPTION).....	Fig. 13

## COMPONENT PARTS

### COMPONENT PARTS

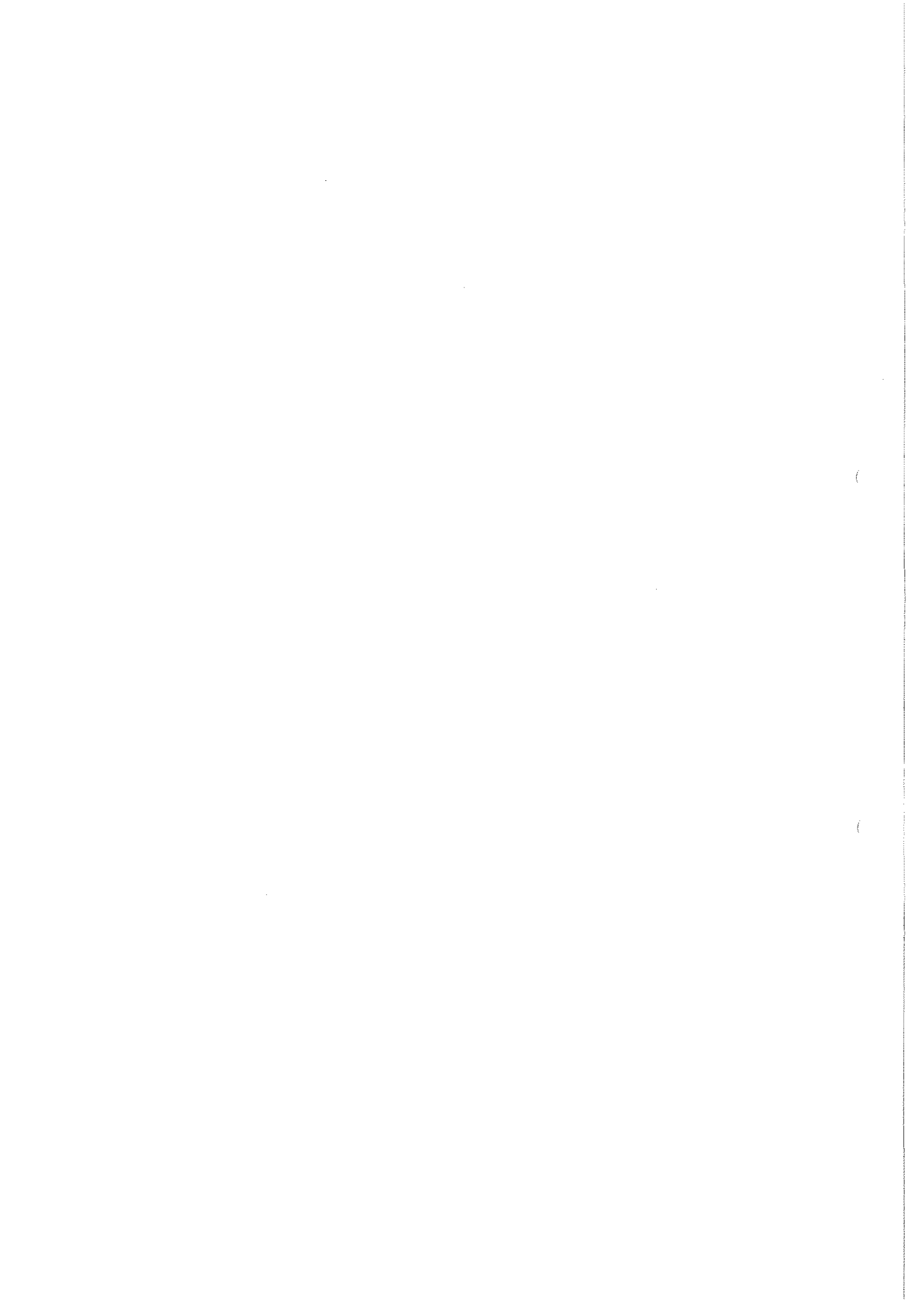
FOR K185-021-000-00 ON Fig.6.....	Fig. 14
-----------------------------------	---------



# MOWER

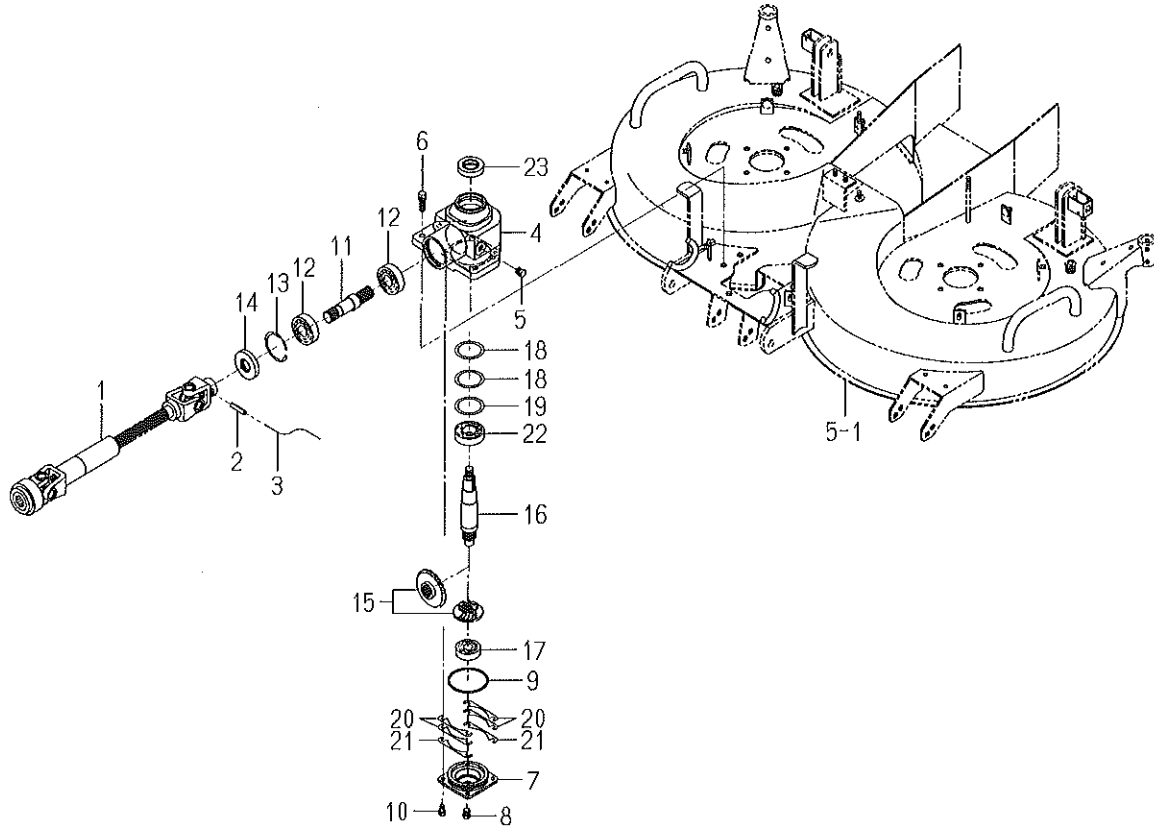
SCMA48M

SCMA54M





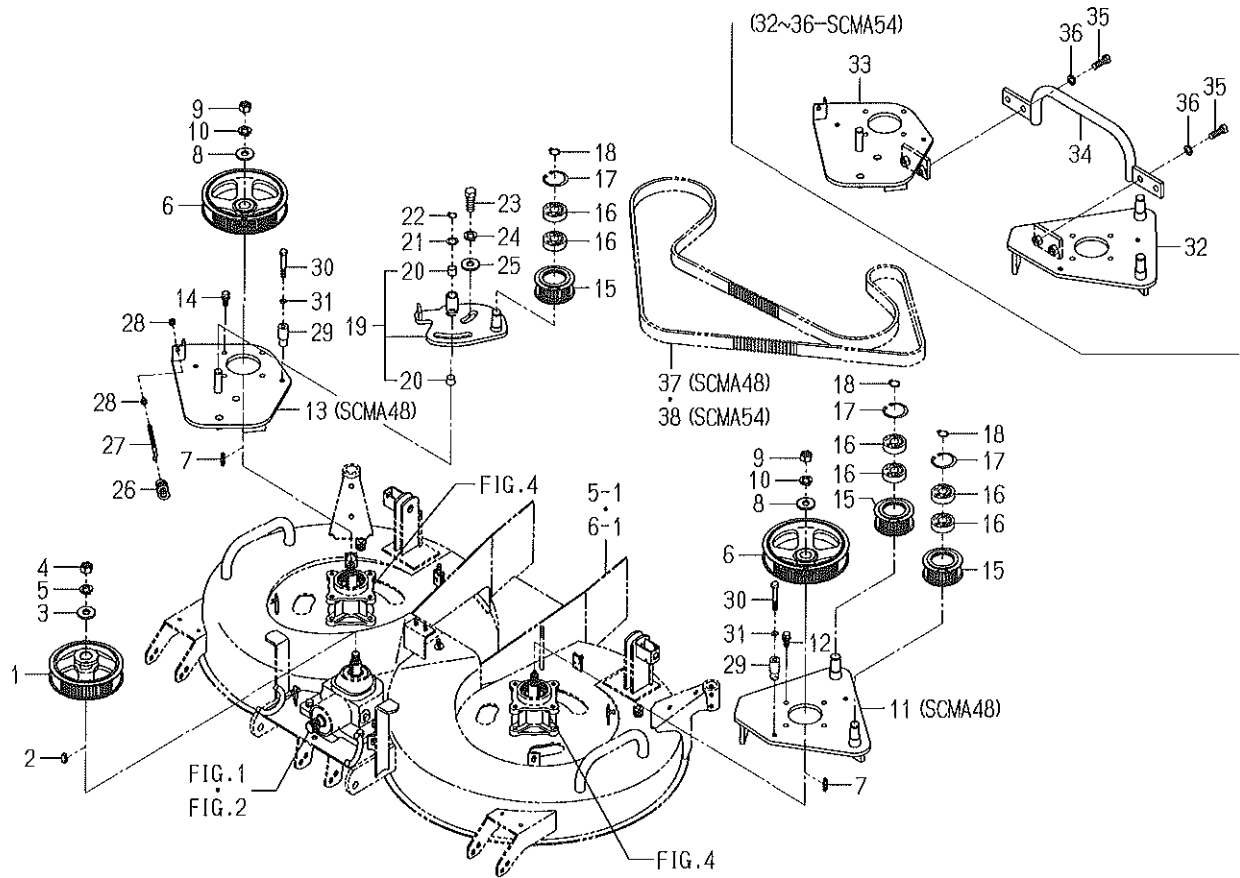
**FIG. 2 UNIVERSAL JOINT,  
BEVEL CASE SYSTEM (SCMA48)**



8662-101-0100,8663-201-0100

KEY	PART CODE	DESCRIPTION	S P C	TYPE OF MODEL		I T C	C O L	G R P	REMARKS
				SCMA48M	SCMA54M				
1	8662-101-210-00	JOINT/UNIVERSAL SET	*	1					FIG 013
2	V580-140-804-00	PIN,SPRING/8 X40 W	*	1					
3		WIRE	*	1					
4	8663-201-001-10	CASE/BEVEL	*	1					
5	7955-201-026-00	PLUG,DRAIN (1/4)	*	1					
6	V211-561-003-50	BOLT/S	*	4					
7	8663-201-002-00	COVER/CASE	*	1					
8	7955-201-026-00	PLUG,DRAIN (1/4)	*	1					
9	V721-103-108-00	O-RING/G80	*	1					
10	V211-260-801-60	BOLT,SEMS (S) M8X16	*	4					
11	8595-201-013-00	SHAFT/INPUT	*	1					
12	1594-218-001-00	BEARING/BALL 6305SH2	*	2					
13	V707-140-062-00	RING/SNAP	*	1					
14	8595-201-025-00	SEAL/OIL	*	1					
15	8657-201-210-10	GEAR/BEVEL/25-1 SET	*	1					
16	8663-201-003-00	SHAFT/OUTPUT	*	1					
17	V600-110-630-40	BEARING,RB/6304	*	1					
18	8663-201-004-00	SHIM/0.1	*	2					
19	8663-201-005-00	SHIM/0.2	*	1					
20	8595-201-021-00	SHIM/0.1	*	4					
21	8595-201-022-00	SHIM/0.2	*	2					
22	V600-110-620-60	BEARING,RB/6206	*	1					
23	V744-130-551-20	SEAL,OIL/TC305512	*	1					

FIG. 3 PULLEY,BELT SYSTEM



8663-202-0100,8665-202-0100,8663-203-0100,8665-203-0100

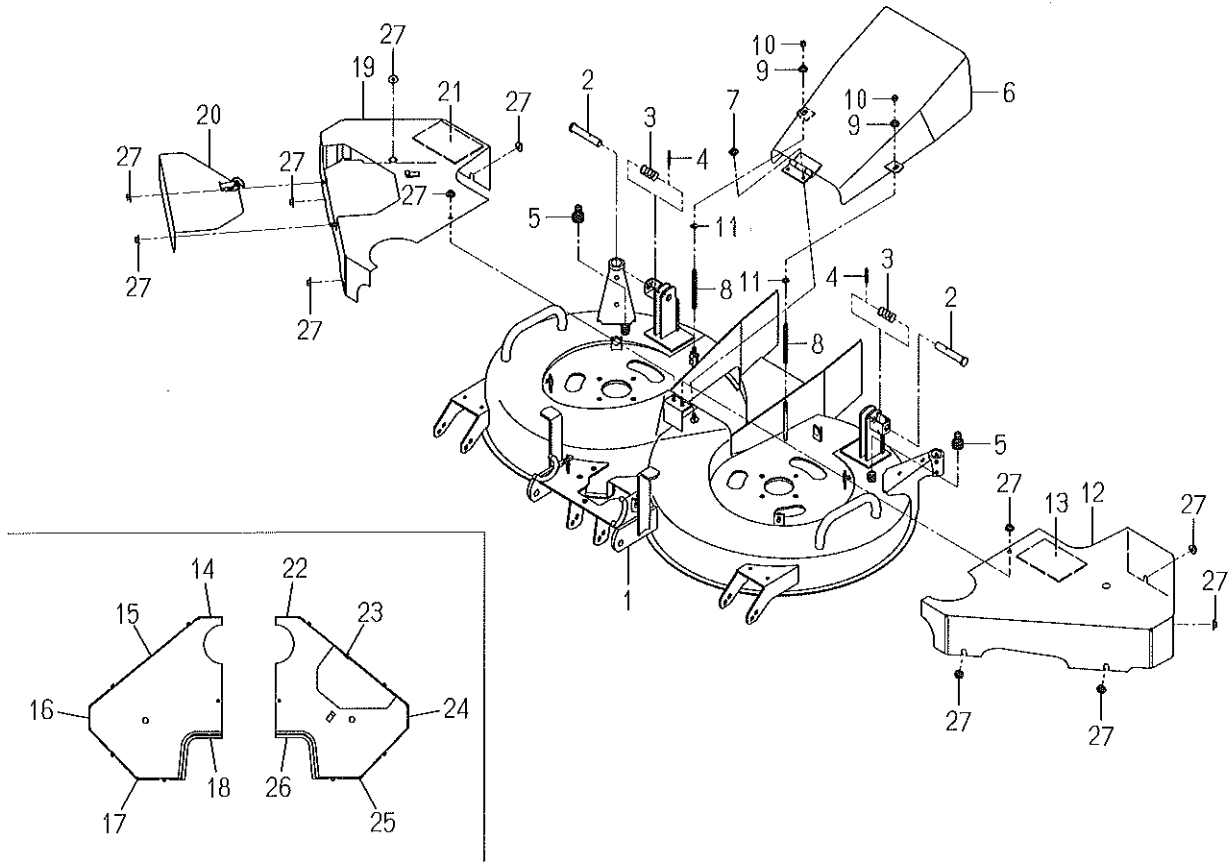
KEY	PART CODE	DESCRIPTION	S P C	TYPE OF MODEL		I T C	C O L	G R P	REMARKS
				SCMA48M	SCMA54M				
1	8663-202-210-10	PULLY/STS/62 COMP	*	1	1				
2	3670-520-001-00	KEY/08X07X20	*	1	1				
3	3746-111-011-00	WASHER	*	1	1				
4	V304-460-016-00	NUT/M16	*	1	1				
5	V401-160-016-00	WASHER,SP/M16	*	1	1				
6	8663-202-220-10	PULLY/STS/72 COMP	*	2	2				
7	8654-202-016-00	KEY/06X06X28	*	2	2				
8	3746-111-011-00	WASHER	*	2	2				
9	V304-460-016-00	NUT/M16	*	2	2				
10	V401-160-016-00	WASHER,SP/M16	*	2	2				
11	8663-202-250-10	BASE/LH COMP	*	1					
12	V211-561-002-50	BOLT/M10X25	*	4	4				
13	8663-202-260-20	BASE/RH COMP	*	1					
14	V211-561-002-50	BOLT/M10X25	*	4	4				
15	8663-202-230-00	PULLY/STS/32 COMP	*	3	3				
16	V600-150-630-40	BEARING,RB/6304SS	*	6	6				
17	V705-140-052-00	RING,SNAP/52 C	*	3	3				
18	V704-140-020-00	RING,SNAP/20C	*	3	3				
19	8663-202-290-00	PLATE/TENSION ASSY	*	1	1				
20	8597-202-501-00	BUSH/16X18X15	*	2	2				
21	3621-211-003-00	WASHER	*	1	1				
22	V704-140-016-00	RING,SNAP/16 C	*	1	1				
23	V201-261-604-00	BOLT/M16X40	*	2	2				
24	V401-160-016-00	WASHER,SP/M16	*	2	2				
25	3746-111-011-00	WASHER	*	2	2				
26	3100-107-004-10	SPRING/SIDE CLUTCH	*	1	1				
27	3737-341-007-00	ROD,CHAIN TENSION	*	1	1				
28	V304-260-008-00	NUT	*	2	2				
29	8663-202-004-00	COLLAR/10X22X48	*	4	4				
30	V201-261-006-00	BOLT/M10X60	*	4	4				







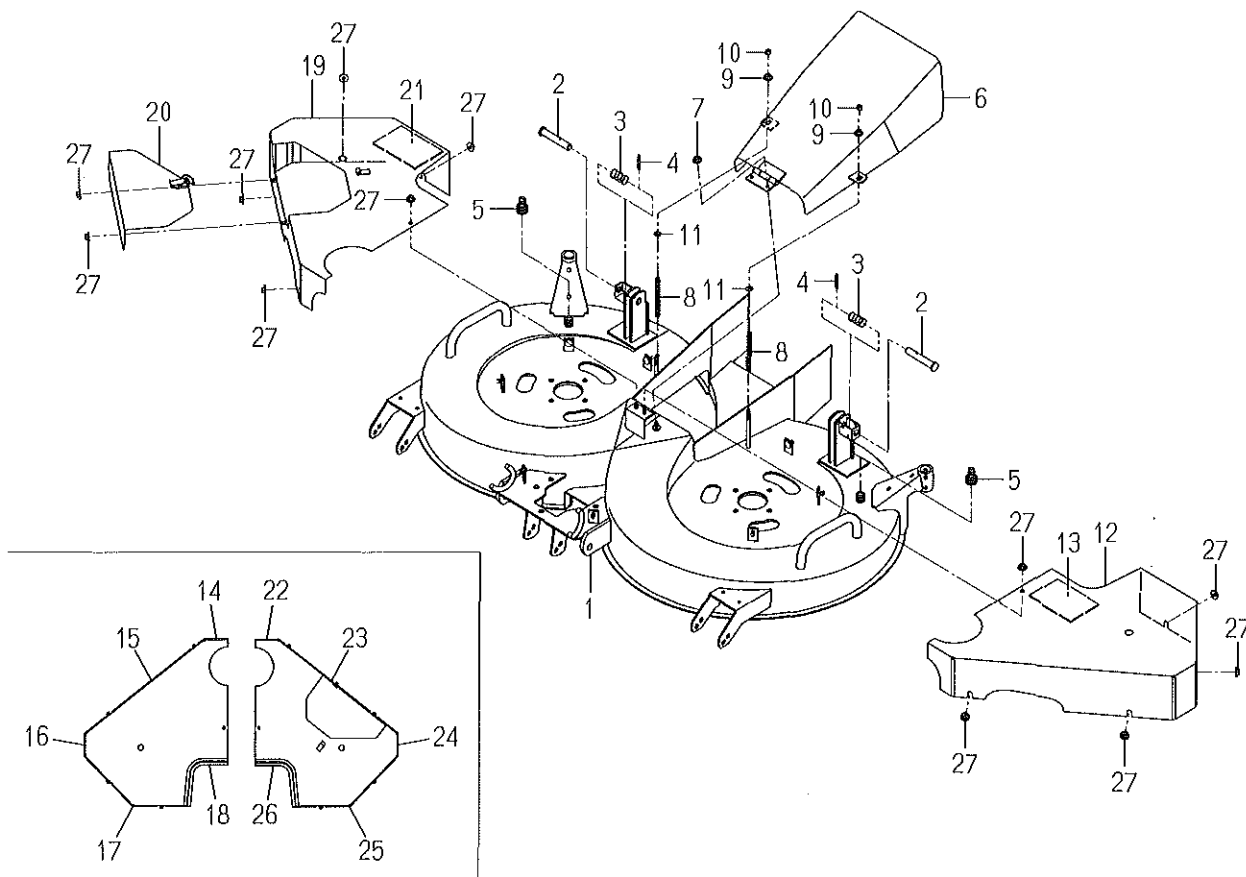
FIG. 5 MOWER DECK,COVER SYSTEM (SCMA48)



8663-402-0100,8663-406-0100,8663-407A-0100

KEY	PART CODE	DESCRIPTION	S P C	TYPE OF MODEL		I T C	C O L	G R P	REMARKS
				SCMA48M	SCMA54M				
1	8663-402-210-40	DECK/MOWER/48 COMP	*	1			7F		
2	8595-608-082-00	PIN/16X96	*	2					
3	1560-601-028-00	SPRING/HC042	*	2					
4	V580-140-504-00	PIN,SPRING/5 X40 W	*	2					
5	8663-402-002-00	PLUG/HOSE/A	*	2					
6	8663-406-210-00	COVER/DISCHARGE COMP	*	1			7F		
7	V363-260-008-00	NUT/WASHER	*	2					
8	8663-406-001-00	SPRING/HC110	*	2					
9	V363-260-008-00	NUT/WASHER	*	2					
10	V304-260-008-00	NUT	*	2					
11	V411-260-008-00	WASHER,PL/M 8	*	2					
12	8663-407-310-00	COVER/BELT/LH COMP	*	1			7F		
13	8663-407-031-00	INSULATOR/150X100	*	1					
14	1636-631-013-00	TRIM/160	*	1					
15	1636-631-014-00	TRIM/320	*	1					
16	1728-630-005-20	INSULATOR/270	*	1					
17	8663-407-032-00	INSULATOR/175	*	1					
18	1728-630-005-20	INSULATOR/270	*	1					
19	8663-407-320-10	COVER/BELT/RH COMP	*	1			7F		
20	8663-407-230-10	PLATE/COVER COMP	*	1			7F		
21	8663-407-031-00	INSULATOR/150X100	*	1					
22	1636-631-013-00	TRIM/160	*	1					
23	1636-631-014-00	TRIM/320	*	1					
24	1728-630-005-20	INSULATOR/270	*	1					
25	8663-407-032-00	INSULATOR/175	*	1					
26	1728-630-005-20	INSULATOR/270	*	1					
27	V363-260-008-00	NUT/WASHER	*	12					

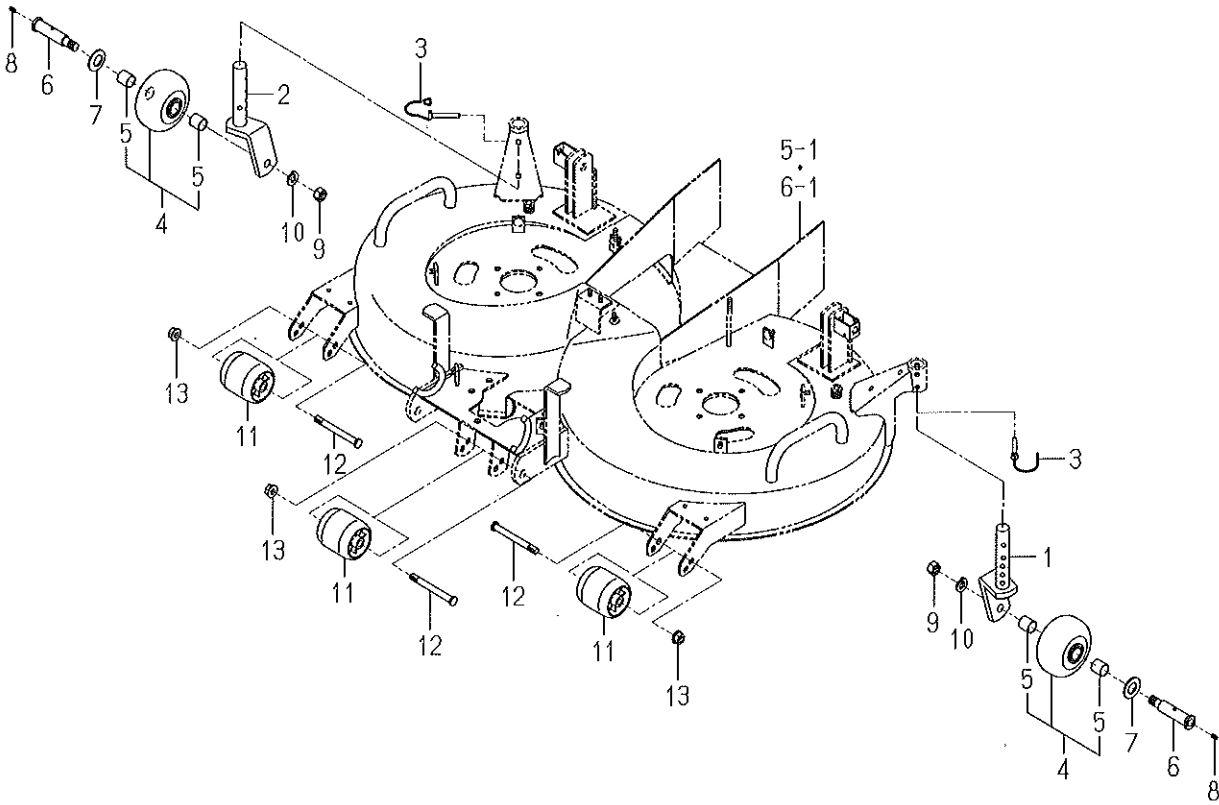
FIG. 6 MOWER DECK,COVER SYSTEM (SCMA54)



8665-402-0100,8665-406-0100,8665-407A-0100

KEY	PART CODE	DESCRIPTION	S P C	TYPE OF MODEL		I T C	C O L	G R P	REMARKS
				SCMA48M	SCMA54M				
1	8665-402-210-30	DECK/MOWER/54 COMP	*		1		7F		
2	8595-608-082-00	PIN/16X96	*		2				
3	1560-601-028-00	SPRING/HC042	*		2				
4	V580-140-504-00	PIN,SPRING/5 X40 W	*		2				
5	8663-402-002-00	PLUG/HOSE/A	*		2				
6	8665-406-210-00	COVER/DISCHARGE COMP	*		1		7F		
7	V363-260-008-00	NUT/WASHER	*		2				
8	8663-406-001-00	SPRING/HC110	*		2				
9	V363-260-008-00	NUT/WASHER	*		2				
10	V304-260-008-00	NUT	*		2				
11	V411-260-008-00	WASHER,PL/M 8	*		2				
12	8665-407-310-00	COVER/BELT/LH COMP	*		1		7F		
13	8663-407-031-00	INSULATOR/150X100	*		1				
14	1636-631-013-00	TRIM/160	*		1				
15	8665-407-031-00	INSULATOR/390	*		1				
16	1728-630-005-20	INSULATOR/270	*		1				
17	8665-407-032-00	INSULATOR/190	*		1				
18	1728-630-005-20	INSULATOR/270	*		1				
19	8665-407-320-10	COVER/BELT/RH COMP	*		1		7F		
20	8663-407-230-10	PLATE/COVER COMP	*		1		7F		
21	8663-407-031-00	INSULATOR/150X100	*		1				
22	1636-631-013-00	TRIM/160	*		1				
23	8665-407-031-00	INSULATOR/390	*		1				
24	1728-630-005-20	INSULATOR/270	*		1				
25	8665-407-032-00	INSULATOR/190	*		1				
26	1728-630-005-20	INSULATOR/270	*		1				
27	V363-260-008-00	NUT/WASHER	*		12				

# FIG. 7 GAUGE WHEEL SYSTEM



8663-501-0100

KEY	PART CODE	DESCRIPTION	S P C	TYPE OF MODEL		I T C	C O L	G R P	REMARKS
				SCMA48M	SCMA54M				
1	8663-501-210-00	FORK/WHEEL/LH COMP	*	1	1		7F		
2	8663-501-220-00	FORK/WHEEL/RH COMP	*	1	1		7F		
3	8663-501-230-00	PIN/08X56 COMP	*	2	2				
4	8657-501-530-00	WHEEL/GAUGE ASSY	*	2	2				
5	8654-501-283-00	BUSH/22X25X25	*	4	4				
6	8663-501-001-10	PIN/22X106	*	2	2				
7	V411-260-022-00	WASHER, PL/M22	*	2	2				
8	V760-150-000-00	NIPPLE, GREASE	*	2	2				
9	V304-460-016-00	NUT/M16	*	2	2				
10	V401-160-016-00	WASHER, SP/M16	*	2	2				
11	8595-501-001-10	WHEEL/GAUGE/FRONT	*	3	3				
12	8595-505-051-30	PIN/12X117	*	3	3				
13	V360-260-012-00	NUT/WASHER	*	3	3				













