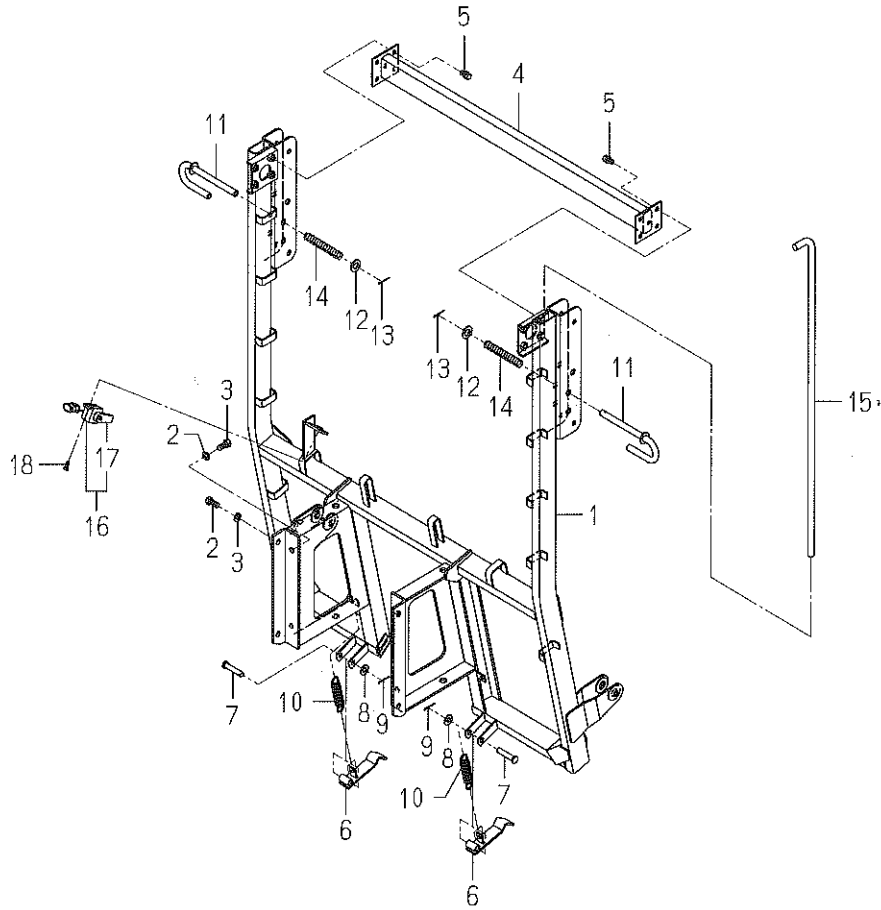


COLLECTOR

SBC550XM

COLLECTOR

FIG. 2 FRAME SYSTEM (H TYPE)



8664-155-0100

KEY	PART CODE	DESCRIPTION	S P C	TYPE OF MODEL		I T C	C O L	G R P	REMARKS
				SBC550X	M				
1	8664-155-210-90	FRAME/COLLECTOR COMP	*	1			7F		
2	V201-361-202-50	BOLT/M12X25	*	8					
3	V401-160-012-00	WASHER,SP/M12	*	8					
4	8664-155-250-00	TUBE/927 COMP	*	1					
5	V211-261-002-00	BOLT,SEMS	*	8					
6	8664-155-230-00	HOOK COMP	*	2					
7	8664-155-001-00	PIN/12X56	*	2					
8	V411-260-012-00	WASHER /M12	*	2					
9	V500-163-002-50	PIN,SPLIT/3 X25	*	2					
10	2500-210-016-00	SPRING/HE108	*	2					
11	8664-155-240-00	PIN COMP	*	2					
12	V411-260-016-00	WASHER / M16	*	2					
13	V500-163-003-00	PIN,SPLIT/3X30	*	2					
14	8664-155-002-00	SPRING/HC120	*	2					
15	8664-105-001-00	BAR	*	1					
16	1716-680-330-00	SWITCH/LEVER ASSY	*	1					
17	1716-680-222-00	ARM	*	1					
18	V210-360-602-00	BOLT/SP	*	1					

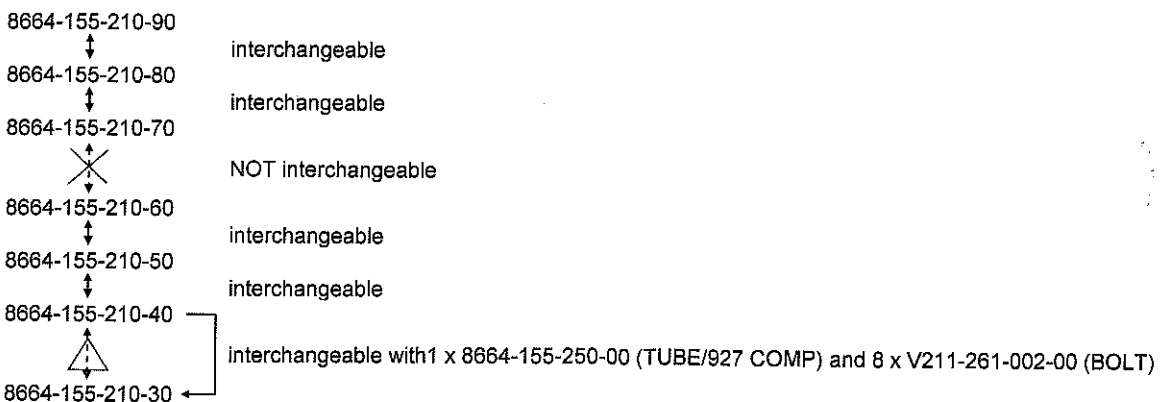
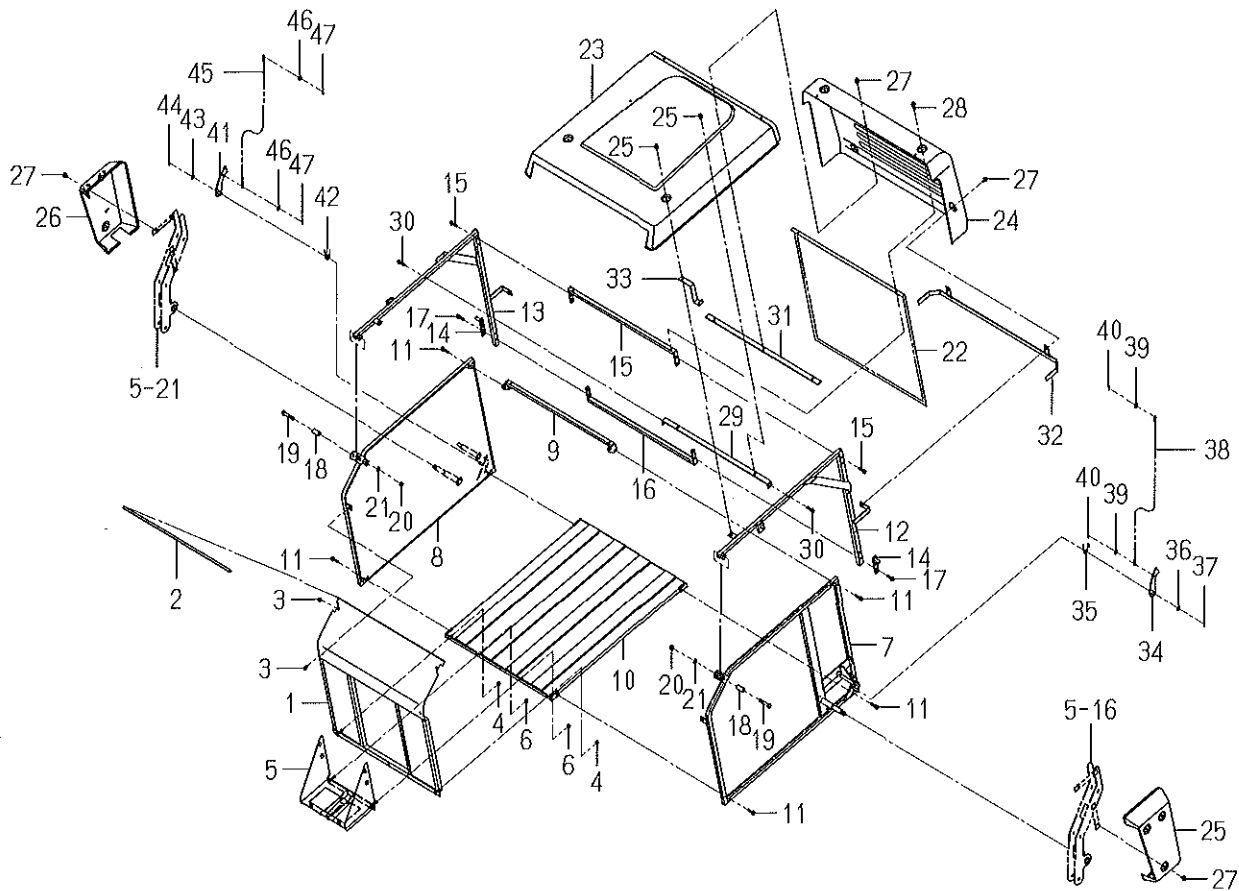


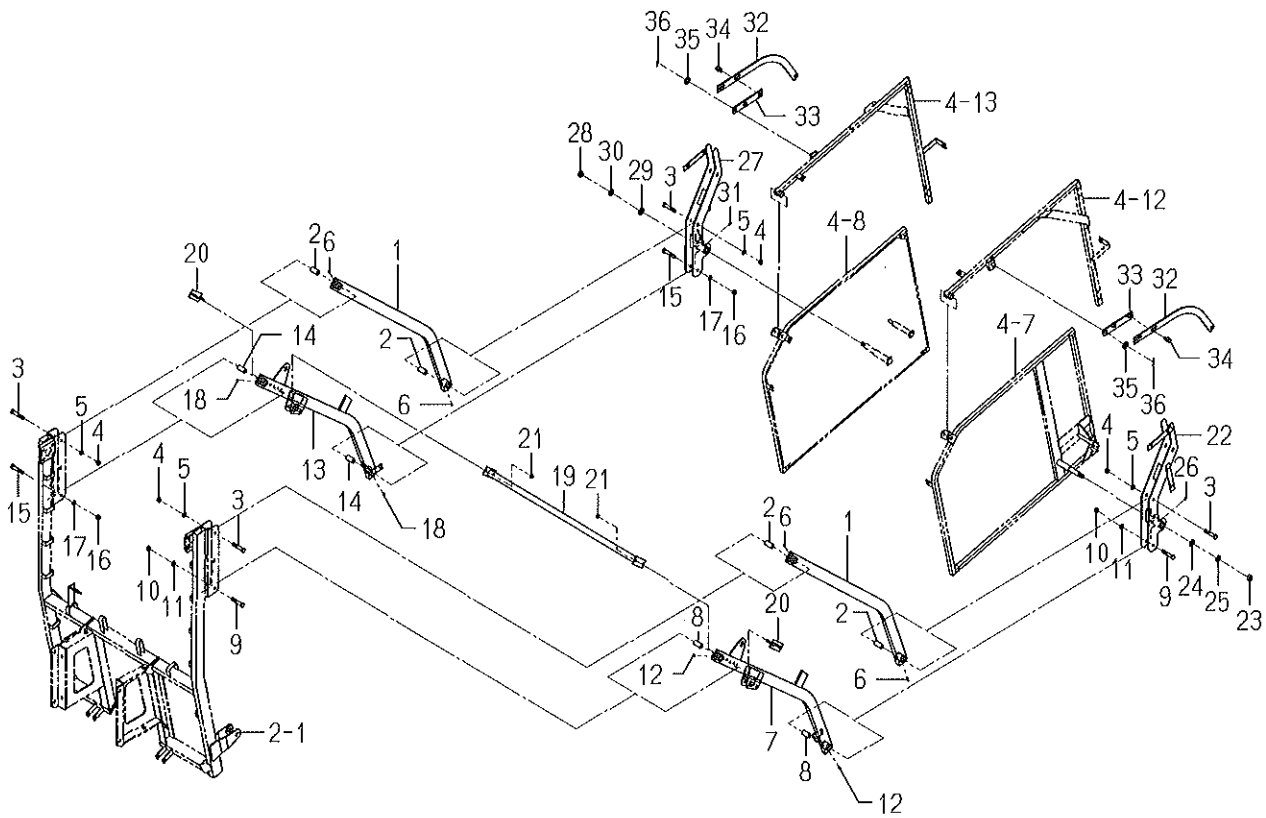
FIG. 4 CONTAINER SYSTEM (H TYPE)



8664-355A-0100

KEY	PART CODE	DESCRIPTION	S P C	TYPE OF MODEL		I T C	C O L	G R P	REMARKS
				SBC550X M					
1	8664-355-410-00	CONTAINER/FRONT COMP	*	1			7F		
2	8664-355-031-00	INSULATOR/756	*	1					
3	V211-360-801-60	BOLT,SEMS (SP)	*	4					
4	V362-260-008-00	NUT/WASHER	*	2					
5	8664-355-310-40	PLATE/LOWER/FRONT	*	1					
6	V362-260-008-00	NUT/WASHER	*	6					
7	8664-355-220-20	FRAME/SIDE/LH COMP	*	1			7F		
8	8664-355-230-20	FRAME/SIDE/RH COMP	*	1			7F		
9	8664-305-230-00	FRAME/REAR COMP	*	1					
10	8664-355-240-10	FRAME/LOWER COMP	*	1			7F		
11	V211-660-804-50	BOLT/SP	*	8					
12	8664-355-250-10	FRAME/COVER/LH COMP	*	1					
13	8664-355-260-10	FRAME/COVER/RH COMP	*	1					
14	8664-355-330-00	PIN COMP	*	2					
15	8664-355-270-00	FRAME/REAR/UPPE COMP	*	1					
16	8664-355-280-00	FRAME/REAR/LOWE COMP	*	1					
17	V211-660-804-50	BOLT/SP	*	8					
18	8664-455-001-00	COLLAR/12X20X41	*	2					
19	V201-361-206-50	BOLT	*	2					
20	V304-260-012-00	NUT/M12	*	2					
21	V401-160-012-00	WASHER,SP/M12	*	2					
22	8664-305-001-10	NET/REAR	*	1			7F		
23	8664-355-002-00	COVER/CONTAINER/FRON	*	1					
24	8664-305-003-00	COVER/CONTAINER/REAR	*	1					
25	8664-355-003-00	COVER/CONTAINER/SIDE	*	1					
26	8664-355-004-00	COVER/CONTAINER/SIDE	*	1					
27	8664-305-004-00	BOLT/SP/M08X20	*	15					
28	8664-305-005-00	BOLT/SP/M08X40	*	2					
29	8664-355-320-00	PLATE/U/749X25 COMP	*	1					
30	V211-660-804-50	BOLT/SP	*	2					

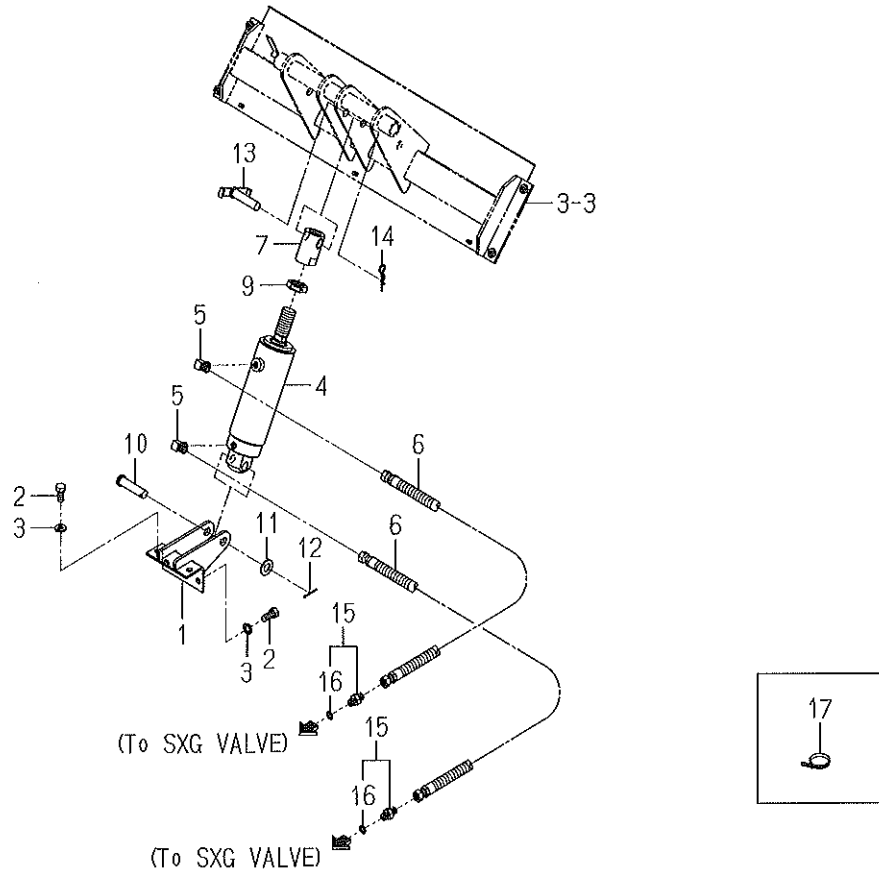
FIG. 5 LINK SYSTEM (H TYPE)



8664-455-0100

KEY	PART CODE	DESCRIPTION	S P C	TYPE OF MODEL		I T C	C O L	G R P	REMARKS
				SBC550X	M				
1	8664-455-210-10	LINK/A COMP	*	2					
2	8664-455-001-00	COLLAR/12X20X41	*	4					
3	V201-361-206-50	BOLT	*	4					
4	V304-260-012-00	NUT/M12	*	4					
5	V401-160-012-00	WASHER,SP/M12	*	4					
6	V760-150-000-00	NIPPLE,GREASE	*	4					
7	8664-455-220-20	LINK/B/LH COMP	*	1					
8	8664-455-001-00	COLLAR/12X20X41	*	2					
9	V201-361-206-50	BOLT	*	2					
10	V304-260-012-00	NUT/M12	*	2					
11	V401-160-012-00	WASHER,SP/M12	*	2					
12	V760-150-000-00	NIPPLE,GREASE	*	2					
13	8664-455-280-00	LINK/B/RH COMP	*	1					
14	8664-455-001-00	COLLAR/12X20X41	*	2					
15	V201-361-206-50	BOLT	*	2					
16	V304-260-012-00	NUT/M12	*	2					
17	V401-160-012-00	WASHER,SP/M12	*	2					
18	V760-150-000-00	NIPPLE,GREASE	*	2					
19	8664-455-230-00	BAR COMP	*	1					
20	8664-455-240-00	PLATE/I/38X80 COMP	*	2					
21	V362-260-008-00	NUT/WASHER	*	4					
22	8664-455-250-10	BRACKET/LINK/LH COMP	*	1					
23	V304-260-016-00	NUT/M16	*	1					
24	V411-260-016-00	WASHER / M16	*	1					
25	V401-160-016-00	WASHER,SP/M16	*	1					
26	V760-150-000-00	NIPPLE,GREASE	*	1					
27	8664-455-260-10	BRACKET/LINK/RH COMP	*	1					
28	V304-260-016-00	NUT/M16	*	1					
29	V411-260-016-00	WASHER / M16	*	1					
30	V401-160-016-00	WASHER,SP/M16	*	1					

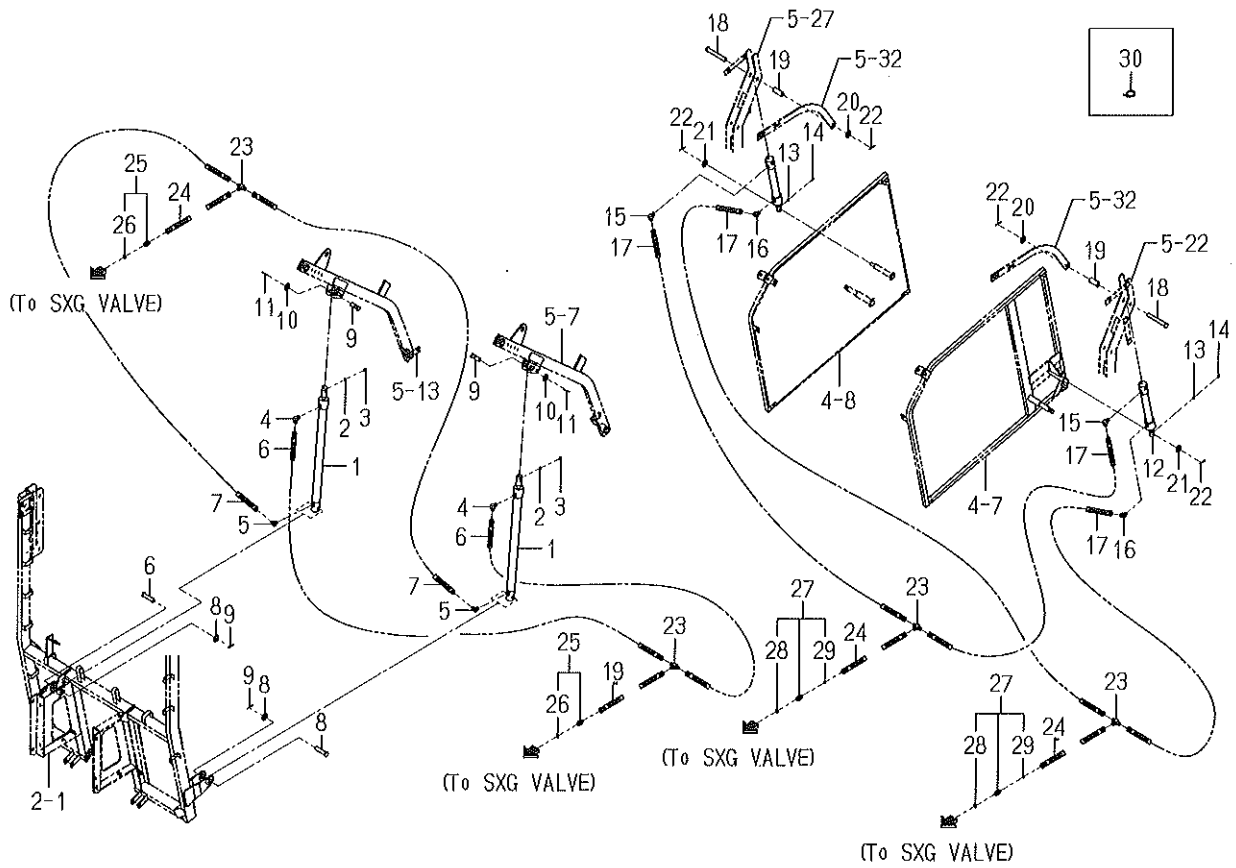
FIG. 6 CYLINDER SYSTEM (L TYPE)



8664-505-0100

KEY	PART CODE	DESCRIPTION	S P C	TYPE OF MODEL		I T C	C O L	G R P	REMARKS
				SBC550X	M				
1	8664-505-210-00	STAY/CYLINDER COMP	*	1					
2	V201-361-202-50	BOLT/M12X25	*	4					
3	V401-160-012-00	WASHER,SP/M12	*	4					
4	K185-021-000-00	CYLINDER ASSY	*	1					FIG 014
5	3768-185-022-10	ADAPTER(90B/PUMP)	*	2					
6	8664-505-230-00	HOSE/HYDRO/650 ASSY	*	2					
7	8664-505-001-20	NUT/CYLINDER	*	1					
8	V760-150-000-00	NIPPLE,GREASE	*	1					
9	8664-505-002-00	NUT/M27X2	*	1					
10	8664-505-003-00	PIN/16X65	*	1					
11	V411-260-016-00	WASHER / M16	*	1					
12	V500-163-003-00	PIN,SPLIT/3X30	*	1					
13	8664-505-220-00	PIN/16X65 COMP	*	1					
14	1305-931-003-00	PIN,HAIR	*	1					
15	8664-555-250-00	ADAPTER/G1/4 ASSY	*	2					
16	V720-112-401-10	RING/O	*	2					
17	1342-402-006-00	BAND,WIRE/250	*	5					

FIG. 7 CYLINDER SYSTEM (H TYPE)



8664-555-0100

KEY	PART CODE	DESCRIPTION	S P C	TYPE OF MODEL SBC550X M	I T C	C O L	G R P	REMARKS
1	K185-077-000-10	CYLINDER ASSY	*	2				
2	V401-160-006-00	WASHER,SP/M 6	*	2				
3	V760-150-000-00	NIPPLE,GREASE	*	2				
4	3768-185-022-10	ADAPTER(90B/PUMP)	*	2				
5	3631-350-201-10	ADAPTER/45B	*	2				
6	8664-555-320-00	HOSE/HYDRO/1100 ASSY	*	2				
7	8664-555-350-00	HOSE/HYDRO/850 ASSY	*	2				
8	8664-555-001-00	PIN/16X66	*	2				
9	8664-555-009-00	PIN/16X46	*	2				
10	V411-260-016-00	WASHER / M16	*	4				
11	V500-163-003-00	PIN,SPLIT/3X30	*	4				
12	K185-078-000-10	CYLINDER ASSY	*	2				
13	V401-160-006-00	WASHER,SP/M 6	*	2				
14	V760-150-000-00	NIPPLE,GREASE	*	2				
15	3768-185-022-10	ADAPTER(90B/PUMP)	*	2				
16	3631-350-201-10	ADAPTER/45B	*	2				
17	8664-555-340-00	HOSE/HYDRO/2700 ASSY	*	4				
18	8664-555-005-00	PIN/16X120	*	2				
19	8664-555-002-00	COLLAR/17X22X53	*	2				
20	V411-260-016-00	WASHER / M16	*	2				
21	V411-260-012-00	WASHER /M12	*	2				
22	V500-163-003-00	PIN,SPLIT/3X30	*	4				
23	8664-555-003-00	ADAPTER/T	*	4				
24	8664-505-230-00	HOSE/HYDRO/650 ASSY	*	4				
25	8664-555-250-00	ADAPTER/G1/4 ASSY	*	2				
26	V720-112-401-10	RING/O	*	2				
27	8664-555-270-00	ADAPTER/ORIFICE ASSY	*	2				
28	V720-112-401-10	RING/O	*	2				
29	K211-004-014-00	SCREW,ORIFICE	*	2				
30	1342-402-006-00	BAND,WIRE/250	*	25				

Numerical Index

8663-097-110-00

Part Code	Fig. Key	Part Code	Fig. Key	Part Code	Fig. Key
1560-601-028-00	5 3	8595-201-025-00	1 14	8663-101-214-00	10 9
	6 3		2 14	8663-201-001-10	1 4
	8 3	8595-501-001-10	7 11		2 4
	8 7	8595-505-051-30	7 12	8663-201-002-00	1 7
	9 6	8595-608-082-00	5 2		2 7
1593-901-015-00					
1594-218-001-00	1 12		6 2	8663-201-003-00	2 16
	2 12		8 2	8663-201-004-00	1 18
1594-221-001-00	4 8		8 6		2 18
1636-631-013-00	5 14	8595-901-006-00	9 2	8663-201-005-00	1 19
	5 22	8595-901-007-00	9 3		2 19
1636-631-014-00	6 14	8597-202-501-00	3 20	8663-202-004-00	3 29
	6 22	8654-101-221-00	10 2	8663-202-210-10	3 1
	5 15		11 2	8663-202-220-10	3 6
	5 23	8654-101-230-00	10 5	8663-202-230-00	3 15
	5 16		11 5	8663-202-250-10	3 11
1728-630-005-20	5 18	8654-101-232-00	10 6	8663-202-260-20	3 13
	5 24		11 6	8663-202-290-00	3 19
	5 26	8654-101-233-00	10 7	8663-203-001-00	3 33
	6 16		11 7	8663-301-001-00	4 3
	6 18	8654-201-410-10	1 15	8663-301-002-10	4 11
2500-901-014-30	6 24	8654-202-016-00	3 7	8663-301-003-00	4 1
	6 26	8654-301-004-00	4 6	8663-301-004-00	4 12
	9 4	8654-501-283-00	7 5	8663-306-001-10	4 13
	9 1	8654-901-002-00	9 5	8663-306-002-10	4 14
	3 26	8657-101-501-00	10 12	8663-306-004-00	4 16
3621-211-003-00	3 21		11 12	8663-306-210-10	4 15
3670-520-001-00	3 2	8657-201-210-10	2 15	8663-402-002-00	5 5
3737-341-007-00	3 27	8657-501-530-00	7 4		6 5
3746-111-011-00	3 3	8657-608-720-00	8 5	8663-402-210-40	5 1
	3 8	8659-101-210-00	1 1	8663-406-001-00	5 8
7821-102-008-00	3 25	8659-101-211-00	12 1		6 8
	10 10		13 1	8663-406-210-00	5 6
	11 10	8659-101-212-00	12 2	8663-407-031-00	5 13
7821-102-220-00	10 11		13 2		5 21
	11 11	8659-101-213-00	12 3		6 13
7955-201-026-00	1 5	8659-101-214-00	12 4		6 21
	1 8	8659-101-215-00	12 5	8663-407-032-00	5 17
	2 5		13 5		5 25
	2 8	8662-101-210-00	2 1	8663-407-230-10	5 20
8595-201-013-00	1 11	8662-101-213-00	13 3		6 20
8595-201-021-00	2 11	8662-101-214-00	13 4	8663-407-310-00	5 12
	1 20	8663-101-210-00	10 1	8663-407-320-10	5 19
	2 20	8663-101-211-00	10 3	8663-501-001-10	7 6
8595-201-022-00	1 21	8663-101-212-00	10 4	8663-501-210-00	7 1
	2 21	8663-101-213-00	10 8	8663-501-220-00	7 2

Numerical Index

8663-097-110-00

Part Code	Fig. Key	Part Code	Fig. Key	Part Code	Fig. Key
8663-501-230-00	7 3	V363-260-008-00	5 27		
8663-608-210-00	8 1		6 7		
8663-901-001-00	9 7		6 9		
8663-901-002-00	9 8		6 27		
8665-101-210-00	11 1	V401-160-010-00	3 31		
8665-101-211-00	11 3	V401-160-012-00	3 36		
8665-101-212-00	11 4		4 18		
8665-101-213-00	11 8	V401-160-016-00	3 5		
8665-101-214-00	11 9		3 10		
8665-201-001-00	1 16		3 24		
8665-202-210-20	3 32		7 10		
8665-202-220-00	3 33	V411-260-008-00	5 11		
8665-202-230-00	3 34		6 11		
8665-203-001-00	3 34	V411-260-022-00	7 7		
8665-306-001-10	4 19	V580-140-504-00	5 4		
8665-306-002-10	4 20		6 4		
8665-402-210-30	6 1		8 4		
8665-406-210-00	6 6		8 8		
8665-407-031-00	6 15	V580-140-804-00	1 2		
	6 23		2 2		
8665-407-032-00	6 17	V600-110-620-60	1 22		
	6 25		2 22		
8665-407-310-00	6 12	V600-110-630-40	1 17		
8665-407-320-10	6 19		2 17		
V201-261-006-00	3 30	V600-110-690-80	4 5		
V201-261-604-00	3 23	V600-150-630-40	3 16		
V201-361-203-50	3 35	V704-140-016-00	3 22		
V203-361-203-50	4 17	V704-140-020-00	3 18		
V211-260-801-60	1 10	V705-140-052-00	3 17		
	2 10		4 10		
V211-561-002-50	3 12	V707-140-062-00	1 13		
	3 14		2 13		
	4 2		4 7		
V211-561-003-50	1 6	V721-103-108-00	1 9		
	2 6		2 9		
V304-260-008-00	3 28	V744-130-551-20	1 23		
	5 10		2 23		
	6 10	V744-135-520-80	4 9		
V304-460-016-00	3 4	V760-150-000-00	4 4		
	3 9		7 8		
	7 9				
V334-460-022-00	8 9				
V360-260-012-00	7 13				
V363-260-008-00	5 7				
	5 9				

Numerical Index

8664-097-110-00

Part Code	Fig. Key	Part Code	Fig. Key	Part Code	Fig. Key
1305-931-003-00	6 14	8664-305-031-00	3 8	8664-455-230-00	5 19
1342-402-006-00	6 17	8664-305-200-10	3 3	8664-455-240-00	5 20
	7 30	8664-305-201-00	3 4	8664-455-250-10	5 22
1518-519-001-00	14 6	8664-305-210-00	3 1	8664-455-260-10	5 27
1593-901-015-00	10 5	8664-305-230-00	3 14	8664-455-270-00	5 33
	11 5		4 9	8664-455-280-00	5 13
1614-129-003-00	8 5	8664-305-240-10	3 12	8664-505-001-20	6 7
	9 5	8664-305-250-10	3 13	8664-505-002-00	6 9
1716-680-222-00	1 10	8664-305-260-10	3 15	8664-505-003-00	6 10
	2 17	8664-305-280-20	3 10	8664-505-210-00	6 1
1716-680-330-00	1 9	8664-305-310-00	3 7	8664-505-220-00	6 13
	2 16	8664-305-320-00	3 22	8664-505-230-00	6 6
2500-210-016-00	1 7	8664-305-330-00	3 24		7 24
	2 10		4 31	8664-555-001-00	7 8
2500-901-027-00	10 1	8664-305-340-00	3 25	8664-555-002-00	7 19
	11 1		4 32	8664-555-003-00	7 23
3631-350-201-10	7 5	8664-355-002-00	4 23	8664-555-005-00	7 18
	7 16	8664-355-003-00	4 25	8664-555-009-00	7 9
3664-276-001-00	8 4	8664-355-004-00	4 26	8664-555-250-00	6 15
	9 4	8664-355-007-00	4 35		7 25
3768-185-022-10	6 5	8664-355-008-00	4 42	8664-555-270-00	7 27
	7 4	8664-355-009-00	4 33	8664-555-320-00	7 6
	7 15	8664-355-031-00	4 2	8664-555-340-00	7 17
8595-901-005-00	10 4	8664-355-220-20	4 7	8664-555-350-00	7 7
	11 4	8664-355-230-20	4 8	8664-605-002-10	8 6
8595-901-007-00	11 6	8664-355-240-10	4 10		9 6
8664-105-001-00	1 8	8664-355-250-10	4 12	8664-605-003-00	8 7
	2 15	8664-355-260-10	4 13		9 7
8664-105-230-00	1 4	8664-355-270-00	4 15	8664-605-004-00	8 8
8664-105-310-00	1 1	8664-355-280-00	4 16		9 8
8664-155-001-00	2 7	8664-355-310-40	4 5	8664-605-005-00	8 9
8664-155-002-00	2 14	8664-355-320-00	4 29		9 9
8664-155-210-90	2 1	8664-355-330-00	4 14	8664-605-210-20	8 1
8664-155-230-00	2 6	8664-355-340-00	4 34		9 1
8664-155-240-00	2 11	8664-355-350-00	4 41	8664-605-220-10	8 11
8664-155-250-00	2 4	8664-355-360-00	4 38	8664-605-230-00	8 3
8664-305-001-10	3 17		4 45		9 3
	4 22	8664-355-410-00	4 1	8664-655-210-10	9 11
8664-305-002-00	3 18	8664-455-001-00	4 18	8664-705-200-00	12 1
8664-305-003-00	3 19		5 2	8664-705-210-10	12 2
	4 24		5 8	8664-705-220-00	12 4
8664-305-004-00	3 20		5 14		13 4
	4 27	8664-455-002-10	5 32	8664-705-230-00	12 7
8664-305-005-00	3 21	8664-455-210-10	5 1		13 7
	4 28	8664-455-220-20	5 7	8664-705-240-00	12 9

Numerical Index

8664-097-110-00

Part Code	Fig. Key	Part Code	Fig. Key	Part Code	Fig. Key
8664-755-200-00	13 1	V211-660-804-50	4 30	V411-260-016-00	5 35
8664-755-210-10	13 2	V273-360-802-00	12 6		6 11
8664-755-220-00	13 9		13 6		7 10
8664-905-001-00	10 2	V304-260-012-00	4 20		7 20
	11 2		5 4	V500-161-601-00	8 10
8664-905-002-00	10 3		5 10		9 10
	11 3		5 16	V500-162-502-00	4 40
8664-905-003-00	10 6	V304-260-016-00	5 23		4 47
	11 7		5 28	V500-163-002-50	1 6
8664-905-004-00	10 7	V360-260-006-00	3 9		2 9
8664-905-005-00	10 8		8 2		4 37
	11 11		9 2		4 44
8664-955-001-00	11 8		12 8	V500-163-003-00	2 13
8664-955-002-00	11 9		13 8		5 36
8664-955-003-00	11 10	V362-260-008-00	3 2		6 12
K185-021-000-00	6 4		3 11		7 11
K185-021-001-00	14 1		3 23		7 22
K185-021-002-00	14 2		4 4	V720-112-401-10	6 16
K185-021-003-00	14 3		4 6		7 26
K185-021-004-00	14 4		5 21		7 28
K185-021-200-00	14 7		12 5	V721-113-106-00	14 10
K185-021-202-00	14 8		12 10	V723-102-006-70	14 11
K185-021-203-00	14 9		13 5	V723-111-502-00	14 5
K185-077-000-10	7 1		13 11	V760-150-000-00	3 5
K185-078-000-10	7 12	V401-160-006-00	7 2		5 6
K211-004-014-00	7 29		7 13		5 12
V201-361-202-50	1 2	V401-160-012-00	1 3		5 18
	2 2		2 3		5 26
	6 2		4 21		5 31
V201-361-206-50	4 19		5 5		6 8
	5 3		5 11		7 3
	5 9		5 17		7 14
	5 15		6 3		
V210-360-602-00	1 11	V401-160-016-00	5 25		
	2 18		5 30		
V211-261-002-00	2 5	V411-260-006-00	4 39		
V211-360-801-60	4 3		4 46		
V211-360-803-00	13 10	V411-260-010-00	4 36		
V211-361-002-50	5 34		4 43		
V211-560-804-50	3 6	V411-260-012-00	1 5		
V211-660-804-00	3 16		2 8		
	12 3		7 21		
	13 3	V411-260-016-00	2 12		
V211-660-804-50	4 11		5 24		
	4 17		5 29		

Alphabetical Index

8663-097-110-00

Description	Fig. Key	Description	Fig. Key	Description	Fig. Key
ARM/FRONT COMP	8 1	COVER/BELT/LH COMP	6 12	KEY/08X07X20	3 2
AS YOKE ASSY	10 12	COVER/BELT/RH COMP	5 19	LABEL/CE	9 1
	11 12		6 19	LABEL/DANGER	9 4
ASYOKE ASSY	12 2	COVER/CASE	1 7	LABEL/GAUGEWHEEL	9 7
	13 2		2 7	LABEL/MAINTENANCE	9 6
BAR/SUPPORT COMP	3 34	COVER/DISCHARGE COMP	5 6	LABEL/PTO	9 5
BASE/LH COMP	3 11		6 6	LABEL/TENSION	9 8
	3 32	DECK/MOWER/48 COMP	5 1	LABEL/WARNING/BELT	9 2
BASE/RH COMP	3 13	DECK/MOWER/54 COMP	6 1	LABEL/WARNING/HOT	9 3
	3 33	FITTINGYOKE	10 2	METAL/BLADE	4 1
BEARING	4 5		11 2	NIPPLE, GREASE	4 4
BEARING, RB/6206	1 22		12 5		7 8
	2 22		13 5	NUT	3 28
BEARING, RB/6304	1 17	FORK/M22 COMP	8 5		5 10
	2 17	FORK/WHEEL/LH COMP	7 1		6 10
BEARING, RB/6304SS	3 16	FORK/WHEEL/RH COMP	7 2		8 9
BEARING/BALL 6205SH2	4 8	GEAR/BEVEL/25-1 SET	2 15	NUT/M16	3 4
BEARING/BALL 6305SH2	1 12	GEAR/BEVEL/25-2 SET	1 15		3 9
	2 12	GREASENIPPLE	10 6		7 9
BELT/D/STS/2800	3 33		11 6	NUT/WASHER	5 7
BELT/D/STS/2880	3 34	INSULATOR/150X100	5 13		5 9
BLADE/60X640/C	4 13		5 21		5 27
BLADE/60X640/D	4 14		6 13		6 7
BLADE/60X716/C	4 19		6 21		6 9
BLADE/60X716/D	4 20	INSULATOR/175	5 17		6 27
BOLT	4 17		5 25		7 13
BOLT, SEMS (S) M8X16	1 10	INSULATOR/190	6 17	O-RING/G80	1 9
	2 10		6 25		2 9
BOLT/M10X25	3 12	INSULATOR/270	5 16	PIN, SPRING/5 X40 W	5 4
	3 14		5 18		6 4
	4 2		5 24		8 4
BOLT/M10X60	3 30		5 26		8 8
BOLT/M12X35	3 35		6 16	PIN, SPRING/8 X40 W	1 2
BOLT/M16X40	3 23		6 18		2 2
BOLT/S	1 6		6 24	PIN/08X18	4 12
	2 6		6 26	PIN/08X56 COMP	7 3
BUSH/16X18X15	3 20	INSULATOR/390	6 15	PIN/12X117	7 12
BUSH/22X25X25	7 5		6 23	PIN/16X96	5 2
CASE/BEVEL	1 4	JOINT/UNIVERSAL SET	1 1		6 2
	2 4		2 1		8 2
CHAIN ASSY	10 11		10 1		8 6
	11 11		11 1	PIN/22X106	7 6
COLLAR/10X22X48	3 29	JOURNALCROSSE ASSY	10 5	PLATE/COVER COMP	5 20
COLLAR/BLADE	4 11		11 5		6 20
COVER/BELT/LH COMP	5 12	KEY/06X06X28	3 7	PLATE/1/80X110 COMP	4 15

Alphabetical Index

8663-097-110-00

Description	Fig. Key	Description	Fig. Key	Description	Fig. Key
PLATE/TENSION ASSY	3 19	SHIM/0.2	2 21		
PLUG, DRAIN (1/4)	1 5	SHIM/1.2	4 16		
	1 8	SLEEVEYOKE	10 4		
	2 5		11 4		
	2 8		12 3		
PLUG/HOSE/A	5 5		13 3		
	6 5	SPRING/HC042	5 3		
PULLY/STS/32 COMP	3 15		6 3		
PULLY/STS/62 COMP	3 1		8 3		
PULLY/STS/72 COMP	3 6		8 7		
RING, SNAP/16 C	3 22	SPRING/HC110	5 8		
RING, SNAP/20C	3 18		6 8		
RING, SNAP/52 C	3 17	SPRING/SIDE CLUTCH	3 26		
	4 10	SURCLIP/HOLE	10 7		
RING/SLIDE	10 10		11 7		
	11 10	TRIM/160	5 14		
RING/SNAP	1 13		5 22		
	2 13		6 14		
	4 7		6 22		
ROD, CHAIN TENSION	3 27	TRIM/320	5 15		
SAFETYGUARD/IN	10 8		5 23		
	11 8	UJ ASSY	12 1		
SAFETYGUARD/OUT	10 9		13 1		
	11 9	WASHER	3 3		
SEAL, OIL/TC305512	1 23		3 8		
	2 23		3 21		
SEAL, OIL/TC35528	4 9		3 25		
SEAL/OIL	1 14	WASHER, PL/M 8	5 11		
	2 14		6 11		
	4 6	WASHER, PL/M22	7 7		
SHAFT/BLADE	4 3	WASHER, SP/M10	3 31		
SHAFT/INPUT	1 11	WASHER, SP/M12	3 36		
	2 11		4 18		
SHAFT/OUTPUT	1 16	WASHER, SP/M16	3 5		
	2 16		3 10		
SHAFTYOKE	10 3		3 24		
	11 3		7 10		
	13 4	WHEEL/GAUGE ASSY	7 4		
SHIM/0.1	1 18	WHEEL/GAUGE/FRONT	7 11		
	1 20	YOKE/SHAFT	12 4		
	2 18				
	2 20				
SHIM/0.2	1 19				
	1 21				
	2 19				

Alphabetical Index

8664-097-110-00

Description	Fig. Key	Description	Fig. Key	Description	Fig. Key
ADAPTER (90° /PUMP)	6 5	BRACKET/LINK/RH COMP	5 27	GUIDE/REAR COMP	4 32
	7 4	BUSH/20X23X25	3 4	GUIDE/SIDE	4 33
	7 15	CABLE/LOCK COMP	4 38	HARNESS/COLLECTOR/H	9 11
ADAPTER/45°	7 5		4 45	HARNESS/COLLECTOR/L	8 11
	7 16	COLLAR/12X20X41	4 18	HOOK COMP	1 4
ADAPTER/G1/4 ASSY	6 15		5 2		2 6
	7 25		5 8	HOSE/HYDRO/1100 ASSY	7 6
ADAPTER/ORIFICE ASSY	7 27		5 14	HOSE/HYDRO/2700 ASSY	7 17
ADAPTER/T	7 23	COLLAR/17X22X53	7 19	HOSE/HYDRO/650 ASSY	6 6
ARM	1 10	CONTAINER/FRONT COMP	4 1		7 24
	2 17	COVER/CONTAINER/FRONT	3 18	HOSE/HYDRO/850 ASSY	7 7
BAND, WIRE/250	6 17		4 23	INSULATOR/756	3 8
	7 30	COVER/CONTAINER/REAR	3 19		4 2
BAR	1 8		4 24	LABEL/CAUTION	10 6
	2 15	COVER/CONTAINER/SIDE	4 25		11 7
BAR COMP	5 19		4 26	LABEL/CAUTION/D	11 8
BOLT	4 19	COVER/PROTECTOR COMP	12 7	LABEL/CAUTION/L	11 9
	5 3		13 7	LABEL/CE	10 1
	5 9	COVER/ROD SET	14 7		11 1
	5 15	COVER/UPPER/SUB COMP	3 7	LABEL/DANGER/DISCHAR	10 4
BOLT, SEMS	2 5	CUP/SPRING	8 6		11 4
BOLT, SEMS (SP)	4 3		9 6	LABEL/LIFT/H	11 10
BOLT, SEMS/M8X20	12 6	CYLINDER ASSY	6 4	LABEL/LIFT/L	10 7
	13 6		7 1	LABEL/MAINTENANCE	10 5
BOLT, SEMS/M8X45 TT	3 6		7 12		11 5
BOLT/KNOB/M06X20	8 9	DISCHARGE/H SET	13 1	LABEL/SENSOR	10 8
	9 9	DISCHARGE/L SET	12 1		11 11
BOLT/M12X25	1 2	FRAME/BOTTOM/H COMP	13 2	LABEL/WARNING/HOT	11 6
	2 2	FRAME/BOTTOM/L COMP	12 2	LINK/A COMP	5 1
	6 2	FRAME/COLLECTOR COMP	1 1	LINK/B/LH COMP	5 7
BOLT/SP	1 11		2 1	LINK/B/RH COMP	5 13
	2 18	FRAME/COVER/LH COMP	4 12	LINK/C	5 32
	3 16	FRAME/COVER/RH COMP	4 13	NET/REAR	3 17
	4 11	FRAME/LOWER COMP	3 15		4 22
	4 17		4 10	NIPPLE, GREASE	3 5
	4 30	FRAME/REAR COMP	3 14		5 6
	5 34		4 9		5 12
	12 3	FRAME/REAR/LOWER COMP	4 16		5 18
	13 3	FRAME/REAR/UPPER COMP	4 15		5 26
	13 10	FRAME/SIDE/LH COMP	3 12		5 31
BOLT/SP/M08X20	3 20		4 7		6 8
	4 27	FRAME/SIDE/RH COMP	3 13		7 3
BOLT/SP/M08X40	3 21		4 8		7 14
	4 28	FRAME/UPPER ASSY	3 3	NUT, U	14 6
BRACKET/LINK/LH COMP	5 22	GUIDE/REAR COMP	3 25	NUT/ADJUST	8 8

Alphabetical Index

8664-097-110-00

Description	Fig. Key	Description	Fig. Key	Description	Fig. Key
NUT/ADJUST	9 8	PIN, SPLIT/3X30	7 11	SPRING/HT020	4 42
NUT/CYLINDER	6 7		7 22	STAY/CYLINDER COMP	6 1
NUT/M12	4 20	PIN/12X56	2 7	SWITCH ASSY	8 3
	5 4	PIN/16X120	7 18		9 3
	5 10	PIN/16X46	7 9	SWITCH/LEVER ASSY	1 9
NUT/M16	5 16	PIN/16X65	6 10		2 16
	5 23	PIN/16X65 COMP	6 13	TUBE/927 COMP	2 4
	5 28	PIN/16X66	7 8	WASHER / M16	2 12
NUT/M27X2	6 9	PIN/20X405 COMP	3 1		5 24
NUT/M6	3 9	PISTON	14 2		5 29
NUT/WASHER	8 2	PLATE/BOTTOM COMP	12 4		5 35
	9 2		13 4		6 11
	12 8	PLATE/COVER/FRONT	3 22		7 10
	13 8	PLATE/COVER/REA COMP	3 24		7 20
	3 2		4 31	WASHER / M6	4 39
	3 11	PLATE/I/38X80 COMP	5 20		4 46
	3 23	PLATE/IR/32X192 COMP	5 33	WASHER /M12	1 5
	4 4	PLATE/IRX13X35	8 4		2 8
	4 6		9 4		7 21
	5 21	PLATE/LOCK/LH COMP	4 34	WASHER, SP/M 6	7 2
	12 5	PLATE/LOCK/RII COMP	4 41		7 13
	12 10	PLATE/LOWER/FRONT	3 10	WASHER, SP/M12	1 3
	13 5		4 5		2 3
	13 11	PLATE/SENSOR COMP	8 1		4 21
O-RING G60	14 10		9 1		5 5
ORNAMENT/SBC550/LH	10 2	PLATE/STAY/H COMP	13 9		5 11
	11 2	PLATE/STAY/L COMP	12 9		5 17
ORNAMENT/SBC550/RH	10 3	PLATE/U/749X25 COMP	4 29		6 3
	11 3	RING/O	6 16	WASHER, SP/M16	5 25
PACKING/PISTON	14 3		7 26		5 30
PACKING/ROD	14 8		7 28	WASHER/M10	4 36
PIN COMP	2 11		14 5		4 43
	4 14		14 11		
PIN, HAIR	6 14	RING/WEAR	14 4		
PIN, SPLIT/1. 6X10	8 10	ROD/PISTON	14 1		
PIN, SPLIT/2. 5X20	9 10	SCREW, ORIFICE	7 29		
	4 40	SCREW/M03X20	8 5		
	4 47		9 5		
PIN, SPLIT/3 X25	1 6	SEAL/DUST	14 9		
	2 9	SPRING/IIC058	8 7		
PIN, SPLIT/3X30	4 37		9 7		
	4 44	SPRING/HC120	2 14		
	2 13	SPRING/HE108	1 7		
	5 36		2 10		
	6 12	SPRING/IIT020	4 35		