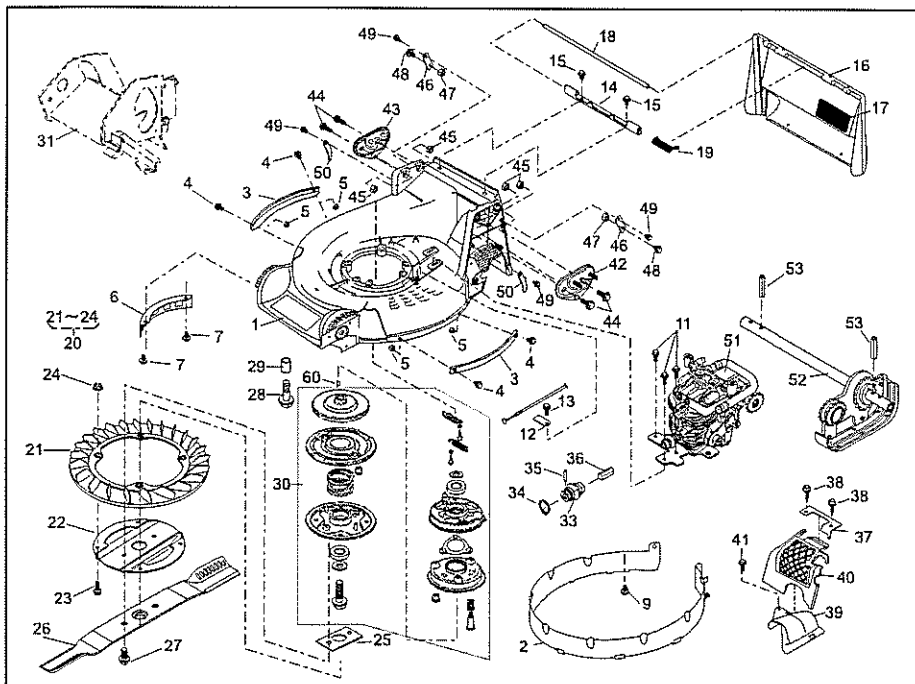


PARTS LIST **COVER UNIT (for 51043-151)**

P/L No. 46014-550-00

NOTE

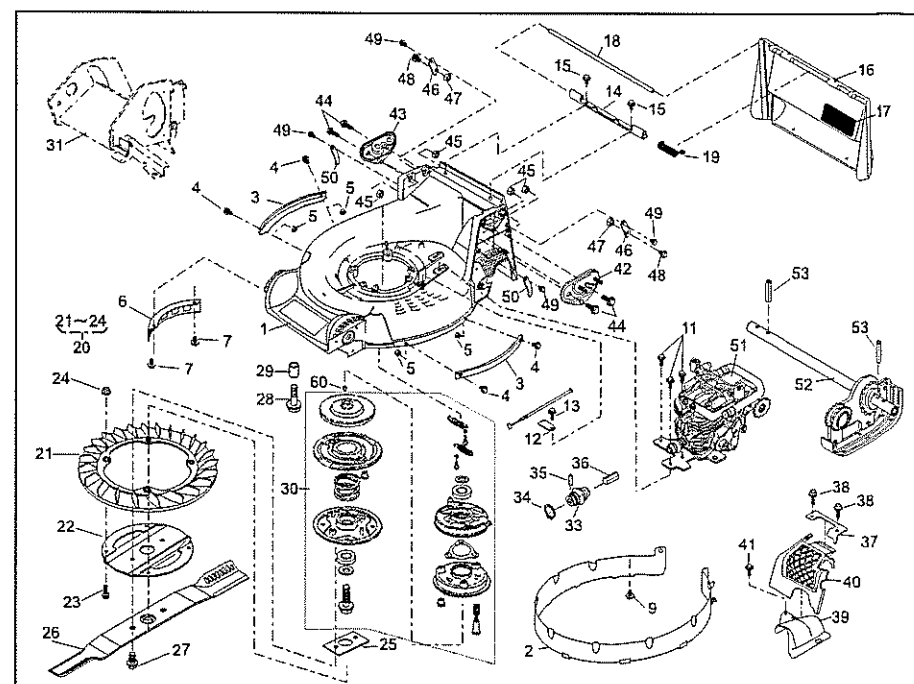
REF. No.	PARTS No.		PARTS NAME	COVER UNIT		1/1		REMARKS
				Q'TY INCLUDING	PRICE()	RECOMM.(%) Lot.100		
1	11006	166	STAY C.P.	1				
2	36080	154	RUBBER SHEET	1				
3	11113	420	STAY	1				
4	613L	0800	PLAIN WASHER	1				
5	423U	0812	SOCKET SCREW FLANGE	1				
6	64014	373	SHAFT	1				
7	11083	387	COLLAR	1				
8	31057	181	HEXAGON BOLT	2				
9	64014	374	SHAFT	1				
10	51079	124	COVER C.P.	1				
11	36080	153	RUBBER SHEET	1				
12	11050	182	FIXING PLATE	1				
13	569L	0400	FLANGE NYLON NUT	3				
14	11006	167	STAY C.P.	1				
15	36080	155	RUBBER SHEET	1				
16	342L	0612	FLANGE TAPPING BOLT	1				
17								
18								
19								
20								
21								
22								
23								
24								
25								
26								
27								
28								



PARTS LIST

P/L No. 46014-642-00

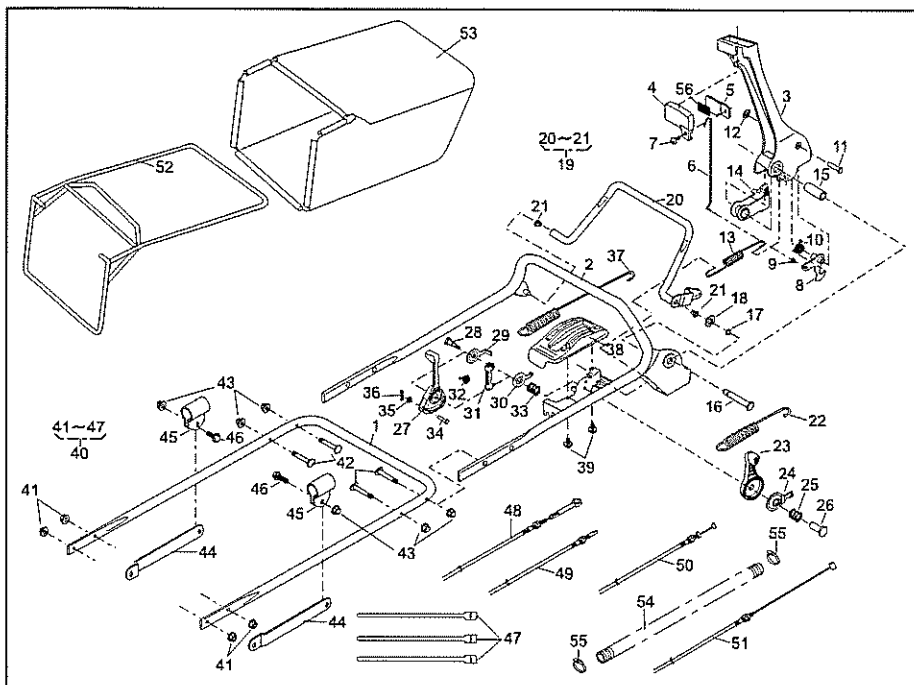
				GRASS-CUTTING-HST-PRO			1/2		Dec. 25, 2006	
REF. No.	PARTS No.			PARTS NAME	Q'TY		PRICE()	RECOMM.(%) Lot.100	REMARKS	
					INCLUDING					
1	51043	151	42	HOUSING	1					
2	36068	204		GUARD	1					
3	51090	117	09	PROTECTOR	2					
4	335L	0515		FLANGE BOLT	4					
5	512L	0600		HEXAGON NUT	4					
6	36065	180		COVER	1					
7	342L	0612		FLANGE TAPPING BOLT	2					
8										
9	342L	0612		FLANGE TAPPING BOLT	1					
10										
11	342L	0612		FLANGE TAPPING BOLT	3					
12	11113	407		STAY	1					
13	342L	0612		FLANGE TAPPING BOLT	1					
14	11113	292		STAY	1					
15	342L	0612		FLANGE TAPPING BOLT	2					
16	36068	195	46	GUARD	1					
17	36080	149		RUBBER SHEET	1					
18	64014	324		SHAFT	1					
19	68013	336		SPRING	1					
20	71082	111		FAN ASS'Y	1					
21	51125	103		FAN	1					
22	11102	151		HOLDER	1					
23	31062	169		PRE-COAT LOCK BOLT	4					
24	579L	0600		FLANGE NUT	4					
25	61024	208		SPACER	1					
26	91014	188		BLADE	1					
27	31057	197		HEXAGON BOLT	2					
28	31057	243		HEXAGON BOLT	4					
29	61024	142		SPACER	3					
30	71067	105		BRAKE ASS'Y	1					



PARTS LIST

P/L No. 46014-642-00

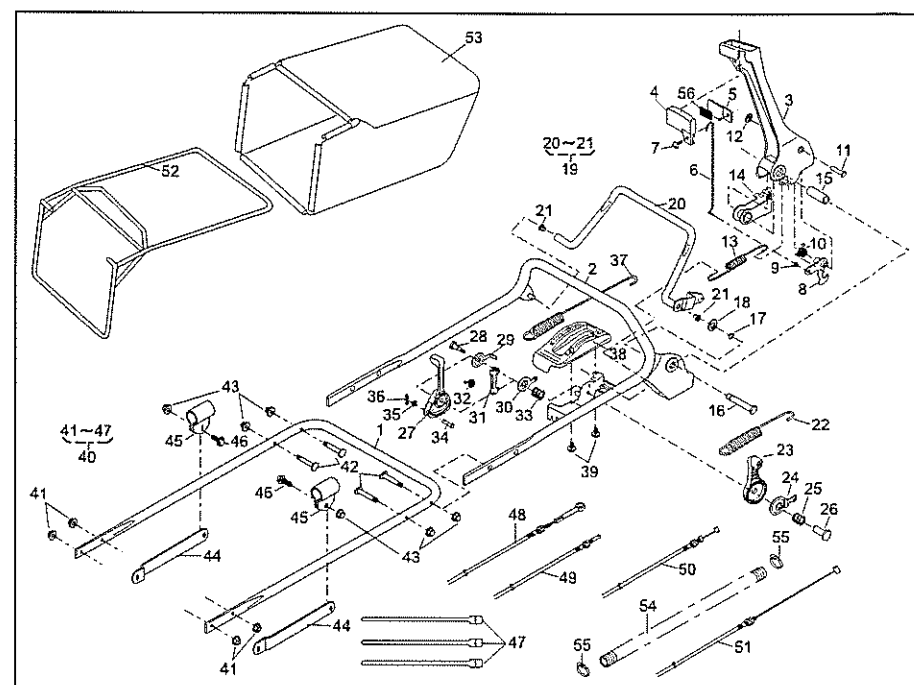
			GRASS-CUTTING-HST-PRO			2/2	Dec. 25, 2006
REF. No.	PARTS No.		PARTS NAME	Q'TY INCLUDING	PRICE()	RECOMM.(%) Lot.100	REMARKS
31			COVER UNIT (Ref. P/L No. 46014-550-**))				
32							
33	91097	101	UNIVERSAL JOINT	1			
34	812V	2000	C-SNAP RING	1			
35	717B	0418	PARALLEL PIN	1			
36	64014	368	SHAFT	1			
37	11050	181	FIXING PLATE	1			
38	423L	0820	SOCKET SCREW FLANGE	2			
39	36065	453	COVER	1			
40	36065	454	COVER	1			
41	342L	0616	FLANGE TAPPING BOLT	1			
42	51116	149	HANDLE BRACKET(L)	1			
43	51116	150	HANDLE BRACKET(R)	1			
44	31057	255	HEXAGON BOLT	4			
45	512L	0800	HEXAGON NUT	4			
46	11113	408	STAY	2			
47	512L	0800	HEXAGON NUT	2			
48	31057	181	HEXAGON BOLT	2			
49	342L	0612	FLANGE TAPPING BOLT	4			
50	11113	415	SATY	2			
51			HST UNIT (Ref. P/L No. 46014-339-**))				
52			SHAFT UNIT (Ref. P/L No. 46014-339-**))				
53	711V	0522	SPRING PIN	2			
54							
55							
56							
57							
58							
59	122040		ENGINE:HONDA GXV160H2-SFL1-NH1	1			
60			WOOD RUFF KEY	1			



PARTS LIST

P/L No. 46014-641-00

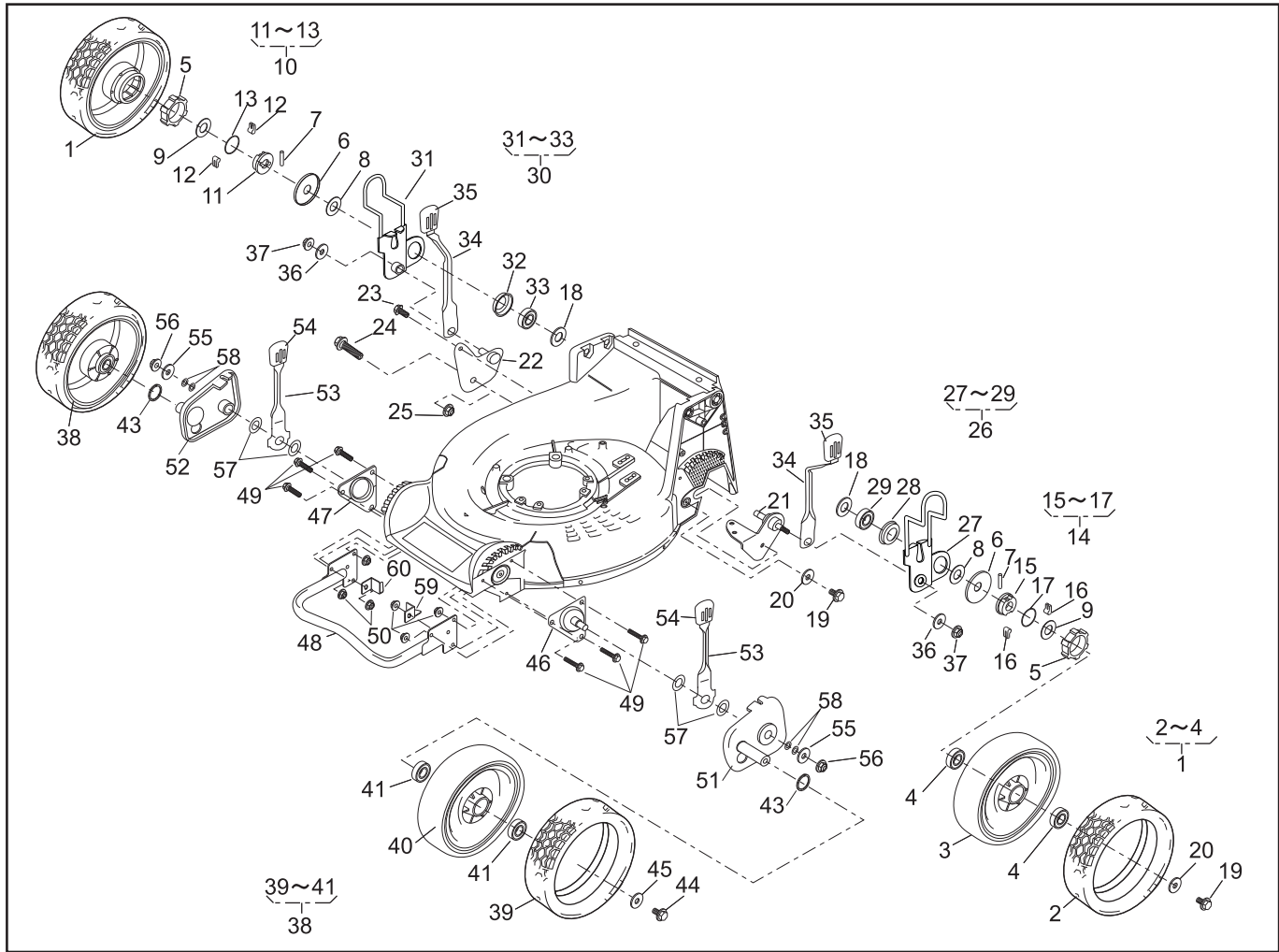
REF. No.	PARTS No.	PARTS NAME	HANDLE-HST-PRO		1/2	Dec. 25, 2006	REMARKS
			Q'TY INCLUDING	PRICE()	RECOMM.(%) Lot.100		
1	51027 249	HANDLE	1				
2	51027 250	HANDLE	1				
3	11095 172	LEVER(BBC)	1				
4	36110 102	BUTTON	1				
5	11049 109	SLIDE PLATE	1				
6	64014 336	SHAFT	1				
7	376L 0612	(+)TRUSS SCREW	1				
8	71203 135	ARM C.P.	1				
9	76007 183	BUSH	1				
10	68013 371	SPRING	1				
11	31056 127	GIB-HEADED PIN	1				
12	576V 0600	PUSH NUT	1				
13	68013 392	SPRING	1				
14	11109 111	LINK	1				
15	61023 190	SLEEVE	1				
16	64014 337	SHAFT	1				
17	812V 0800	C-SNAP RING	1				
18	613L 0800	PLAIN WASHER	1				
19	71161 114	LEVER ASS'Y	1				
20		LEVER	1				
21	76007 131	BUSH	2				
22	68013 385	SPRING	1				
23	91010 169	THROTTLE LEVER(GXV120/GXV160)	1				
24	61003 113	THRUST PLATE	1				
25	68013 358	SPRING	1				
26	31058 168	HEXAGON NUT	1				
27	11095 162	LEVER(HST)	1				
28	31057 249	HEXAGON BOLT	1				
29	61003 118	THRUST PLATE	1				
30	11049 108	SLIDE PLATE	1				



PARTS LIST

P/L No. 46014-641-00

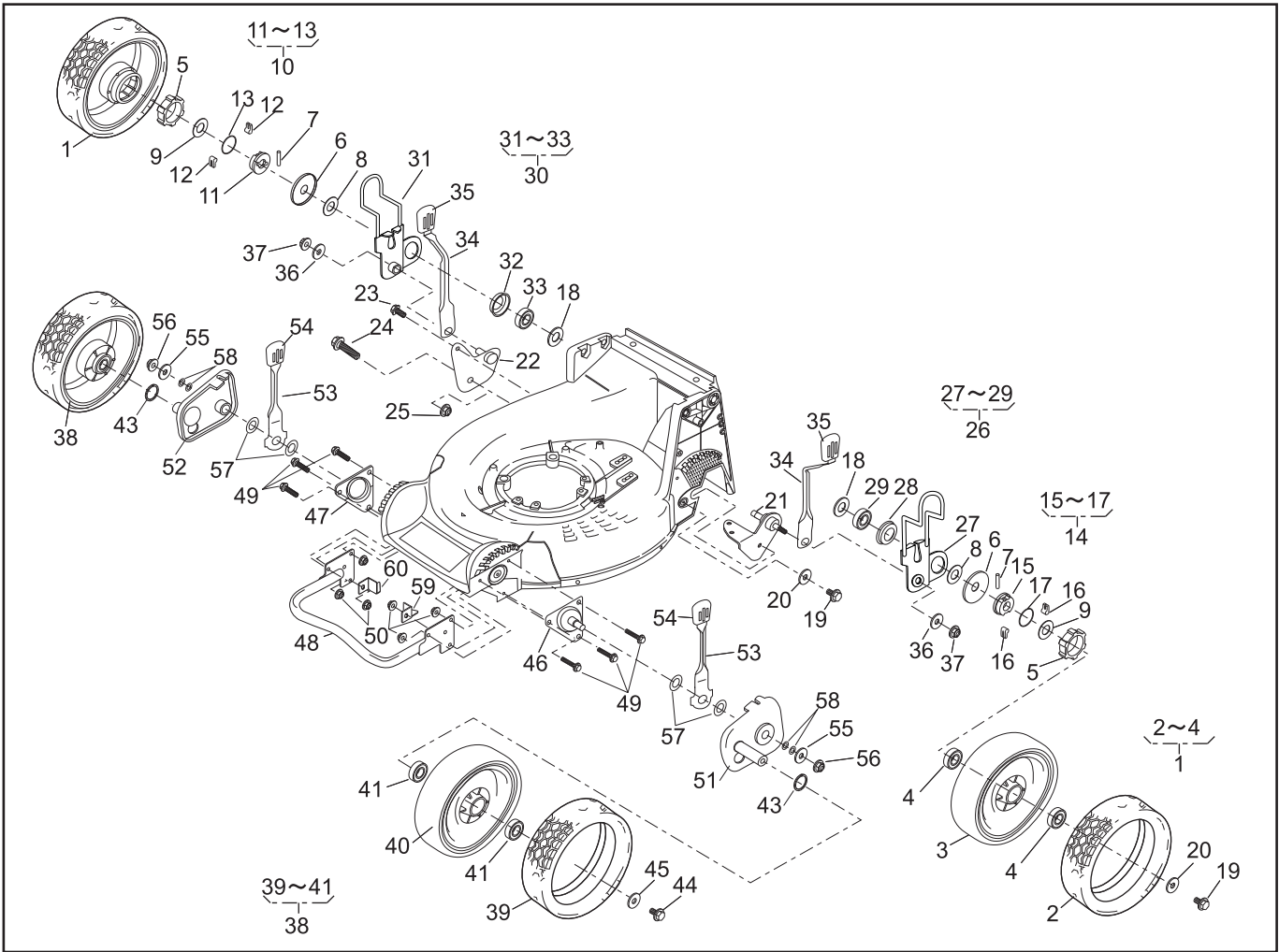
REF. No.	PARTS No.	PARTS NAME	HANDLE-HST-PRO		2/2	Dec. 25, 2006	REMARKS
			Q'TY INCLUDING	PRICE()	RECOMM.(%) Lot.100		
31	11109 112	LINK	1				
32	68013 369	SPRING	1				
33	68013 356	SPRING	1				
34	31056 126	GIB-HEADED PIN	1				
35	613L 0600	PLAIN WASHER	1				
36	733L 0600	SNAP PIN	1				
37	68013 375	SPRING	1				
38	71900 811	COVER ASS'Y	1				
39	470L 0514	(+)TAPPING SCREW	2				
40	71900 845	BOLT SET	1				
41	569L 0800	FLANGE NYLON NUT	4				
42	31057 256	HEXAGON BOLT	4				
43	583L 0800	FLANGE CAP NUT	6				
44	71900 846	BAR SET	1				
45	11012 132	HANGER BAND	2				
46	31057 181	HEXAGON BOLT	2				
47	68028 118	WIRE BAND	3				
48	91003 178	CONTROL CABLE	1				
49	91003 179	CONTROL CABLE	1				
50	91001 329	THROTTLE WIRE(GXV120/GXV160)	1				
51	91003 169	CONTROL CABLE(BBC)	1				
52	11062 178	FRAME C.P.	1				
53	36098 145	GRASS BAG C.P.(ISEKI)	1				
54	41003 201	TUBE (15.6x800L)	1				
55	68028 119	WIRE BAND	2				
56	36080 166	RUBBER SHEET	1				
57							
58							
59							
60							



PARTS LIST

P/L No. 46014-507-00

NOTE	REF. No.	PARTS No.		PARTS NAME	9.6"AI-WHEEL-HST-PRO				1/2		Dec. 25, 2006	
					Q'TY		PRICE()		RECOMM.(%)	Lot.100	REMARKS	
					INCLUDING							
	1	71041	144	WHEEL ASS'Y(9.6"A.W.)	2				3			
	2	91086	116	TIRE		2			5			
	3			WHEEL		2			-			
	4	916B	6002	BEARING		4			3			
	5	11086	119	STOPPER	2				3			
	6	61003	112	THRUST PLATE	2				10			
	7	31034	137	PIN	2				10			
	8	68036	270	WASHER	2				5			
	9	68036	146	WASHER	2				5			
	10	71158	101	RATCHET ASS'Y(R)	1				-			
	11	11102	138	HOLDER		1			10			
	12	31034	170	PIN		2			10			
	13	68013	266	SPRING		1			10			
	14	71158	102	RATCHET ASS'Y(L)	1				-			
	15	11102	138	HOLDER		1			10			
	16	31034	170	PIN		2			10			
	17	68013	266	SPRING		1			10			
	18	68036	275	WASHER	2				5			
	19	31057	181	HEXAGON BOLT	3				3			
	20	68036	101	WASHER	3				3			
	21	11006	162	STAY C.P.(HST)	1				3			
	22	11006	152	STAY C.P.(RR)	1				3			
	23	342L	0612	FLANGE TAPPING BOLT	1				3			
	24	31057	255	HEXAGON BOLT	1				3			
	25	584L	0800	U-FLANGE NUT	1				3			
	26	71122	110	ADJUSTER ASS'Y(L)	1				-			
	27	11142	125	ADJUSTER(RL)		1			5			
	28	11102	228	HOLDER		1			5			
	29	916B	6202	BEARING		1			5			
	30	71122	111	ADJUSTER ASS'Y(R)	1				-			



PARTS LIST

P/L No. 46014-507-00

NOTE	REF. No.	PARTS No.		PARTS NAME	9.6"AI-WHEEL-HST-PRO				2/2		Dec. 25, 2006	
					Q'TY		PRICE()		RECOMM.(%)	Lot.100	REMARKS	
					INCLUDING							
	31	11142	126	ADJUSTER(RR)		1			5			
	32	11102	228	HOLDER		1			5			
	33	916B	6202	BEARING		1			5			
	34	11150	105	09 ADJUST LEVER	2				5			
	35	36061	121	KNOB	2				5			
	36	613L	0800	PLAIN WASHER	2				5			
	37	569L	0800	FLANGE NYLON NUT	2				5			
	38	71041	145	WHEEL ASS'Y(9.6"A.W.)	2				3			
	39	91086	116	TIRE		2			5			
	40			WHEEL		2			-			
	41	916B	6002	BEARING		4			3			
	42											
	43	51113	119	RING	2				3			
	44	31057	181	HEXAGON BOLT	2				3			
	45	68036	101	WASHER	2				3			
	46	11006	153	STAY C.P.(FL)	1				5			
	47	11006	154	STAY C.P.(FR)	1				5			
	48	11153	112	BUMPER	1				5			
	49	335L	0625	FLANGE BOLT	6				5			
	50	569L	0600	FLANGE NYLON NUT	6				5			
	51	11142	127	ADJUSTER(FL)	1				5			
	52	11142	128	ADJUSTER(FR)	1				5			
	53	11150	109	09 ADJUST LEVER	2				5			
	54	36061	121	KNOB	2				5			
	55	68036	101	WASHER	2				5			
	56	584L	0800	U-FLANGE NUT	2				5			
	57	68013	393	SPRING	4				3			
	58	68007	105	SHIM	0~4				3			
	59	11113	418	STAY(L)	1				5			
	60	11113	417	STAY(R)	1				5			