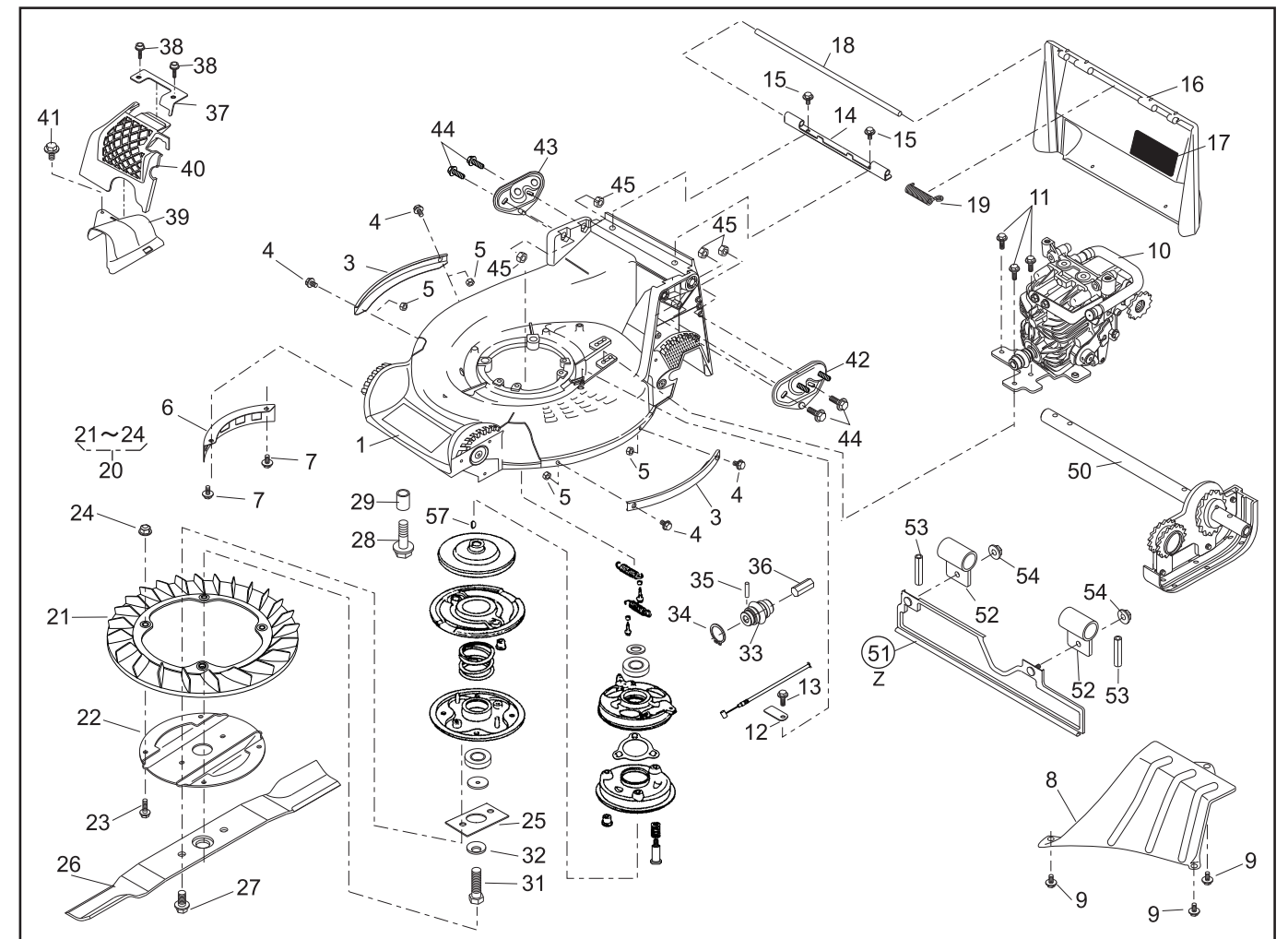


PARTS LIST

46014-352-01

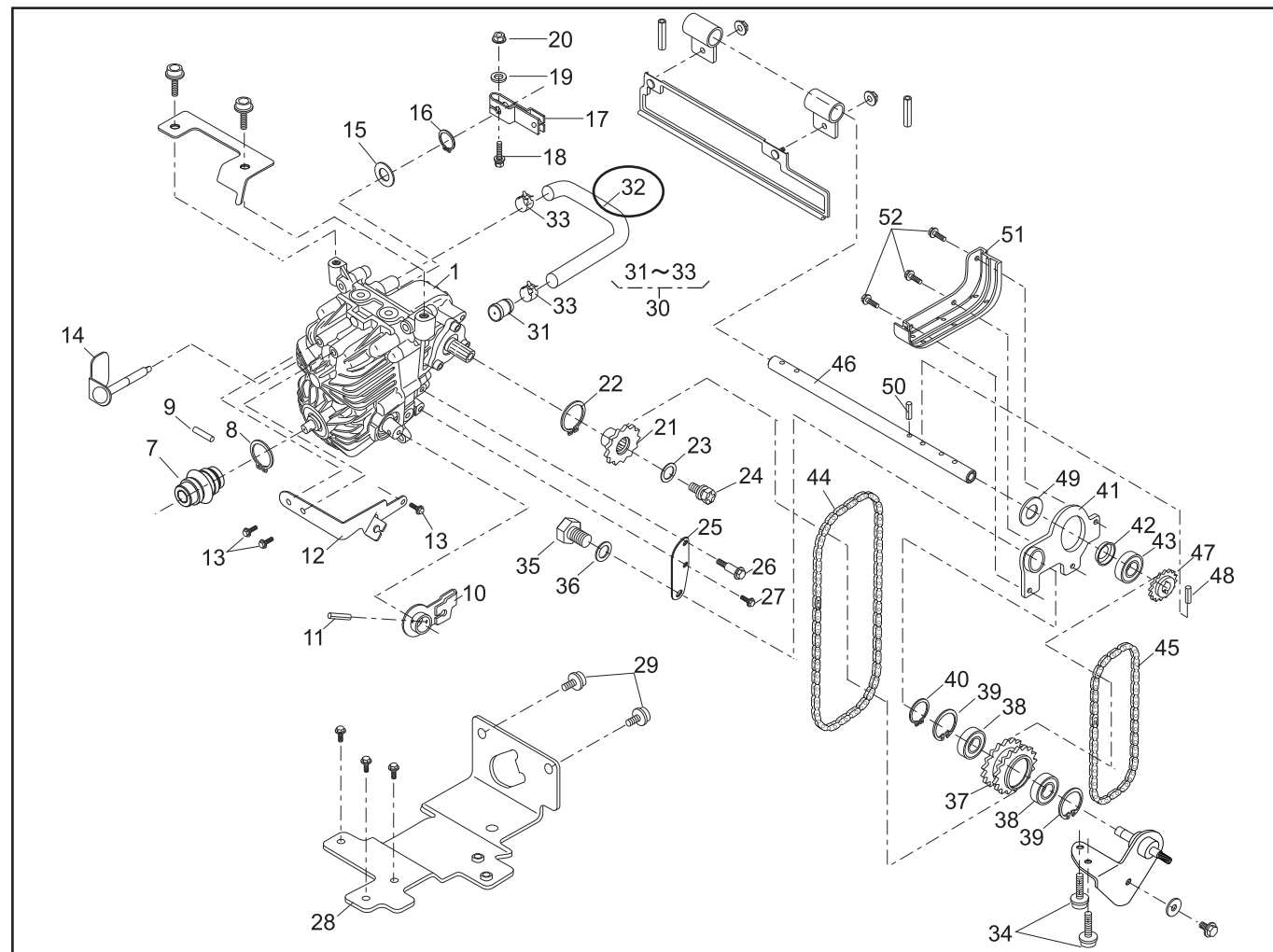
NOTE					GRASS-CUTTING-HST				1/2		Dec.29,2005	
	REF. No.	PARTS No.			PARTS NAME	Q'TY			PRICE()	RECOMM.(%)		REMARKS
						INCLUDING				Lot.100		
	1	51043	147	42	HOUSING	1						
	2											
	3	51090	117	09	PROTECTOR	2						
	4	335L	0616		FLANGE BOLT	4						
	5	512L	0600		HEXAGON NUT	4						
	6	36065	180		COVER	1						
	7	342L	0612		FLANGE TAPPING BOLT	2						
	8	36065	436		COVER	1						
	9	342L	0612		FLANGE TAPPING BOLT	3						
	10				HST UNIT	1						
	11	342L	0612		FLANGE TAPPING BOLT	3						
	12	11113	407		STAY	1						
	13	342L	0612		FLANGE TAPPING BOLT	1						
	14	11113	292		STAY	1						
	15	342L	0612		FLANGE TAPPING BOLT	2						
	16	36068	196	46	GUARD	1						
	17	36080	149		RUBBER SHEET	1						
	18	64014	324		SHAFT	1						
	19	68013	336		SPRING	1						
	20	71082	111		FAN ASSY	1						
	21	51125	103		FAN		1					
	22	11102	151		HOLDER		1					
	23	31062	169		PRE-COAT LOCK BOLT		4					
	24	579L	0600		FLANGE NUT		4					
	25	61024	208		SPACER	1						
	26	91014	159		BLADE	1						
	27	31057	197		HEXAGON BOLT	2						
	28	31057	243		HEXAGON BOLT	4						
	29	61024	142		SPACER	3						



PARTS LIST

46014-352-01

[illegible]

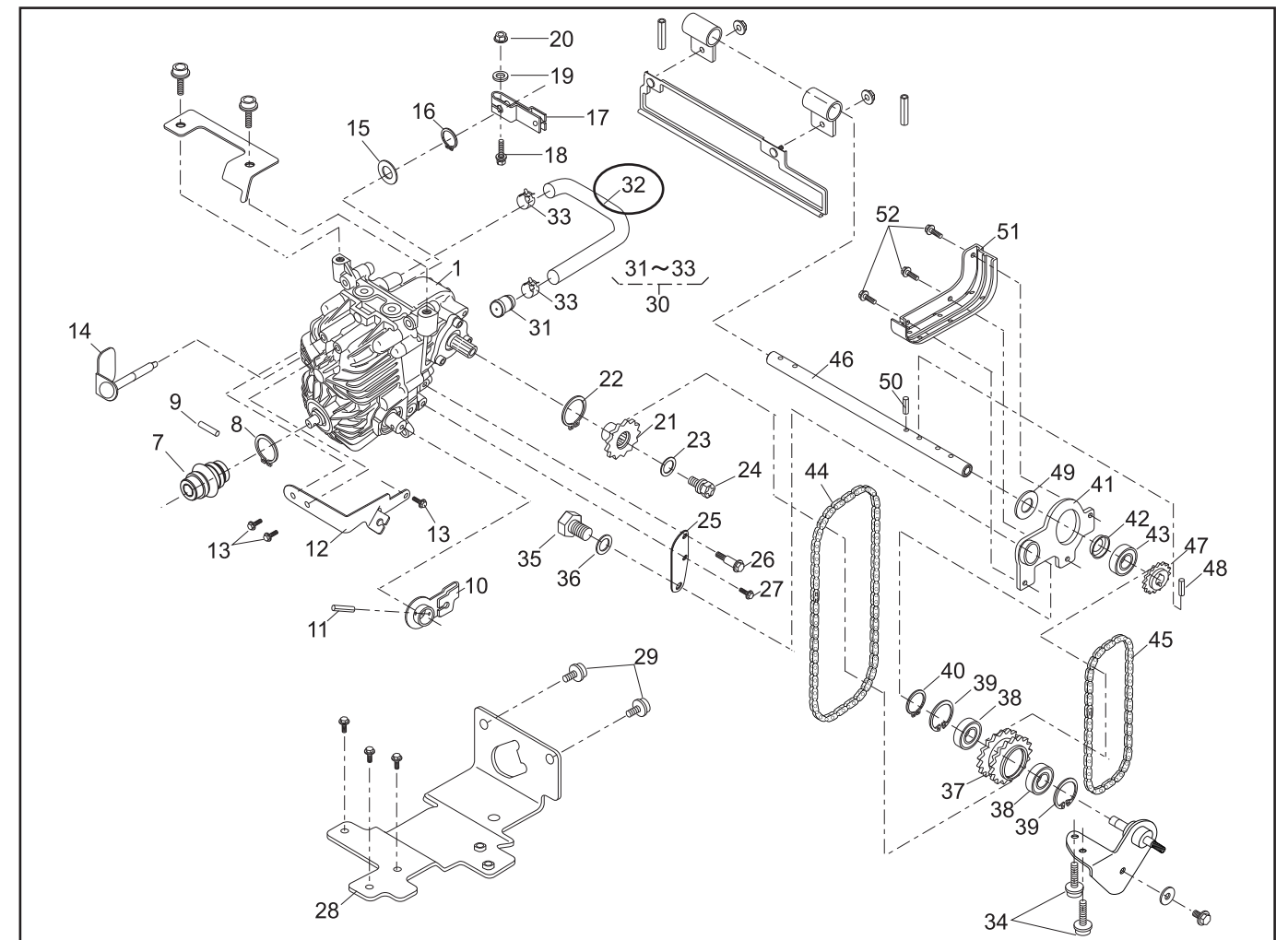


PARTS LIST

HST UNIT

46014-339-01

NOTE		REF. No. PARTS No. PARTS NAME				HST				1/2		Nov.01,2005	
						QTY		PRICE()	RECOMM.(%)		REMARKS		
						INCLUDING							
	1	71900	979		HST ASSY	1							
F	7	91097	101		UNIVERSAL JOINT	1							
	8	812V	2000		C-SNAP RING	1							
	9	717B	0418		PARALLEL PIN	1							
	10	51042	126		LEVER C.P.	1							
	11	711V	0432		SPRING PIN	1							
	12	51002	121		WIRE HOLDER	1							
	13	335L	0612		FLANGE BOLT	3							
	14	71203	139		ARM C.P.	1							
	15	68036	280		WASHER	1							
	16	812V	1000		C-SNAP RING	1							
	17	11104	119		ARM	1							
	18	320L	0525		(+)HEXAGON BOLT	1							
	19	611L	0500		PLAIN WASHER	1							
	20	571L	0500		FLANGE NUT	1							
	21	36112	142		SPROCKET	1							
	22	812V	1500		C-SNAP RING	1							
F	23	68036	125		WASHER	1							
	24	312L	0612		HEXAGON BOLT	1							
	25	11113	414		STAY	1							
	26	31062	109		PRE-COAT LOCK BOLT	1							
	27	335L	0612		FLANGE BOLT	1							
	28	11137	131		BASE C.P.	1							

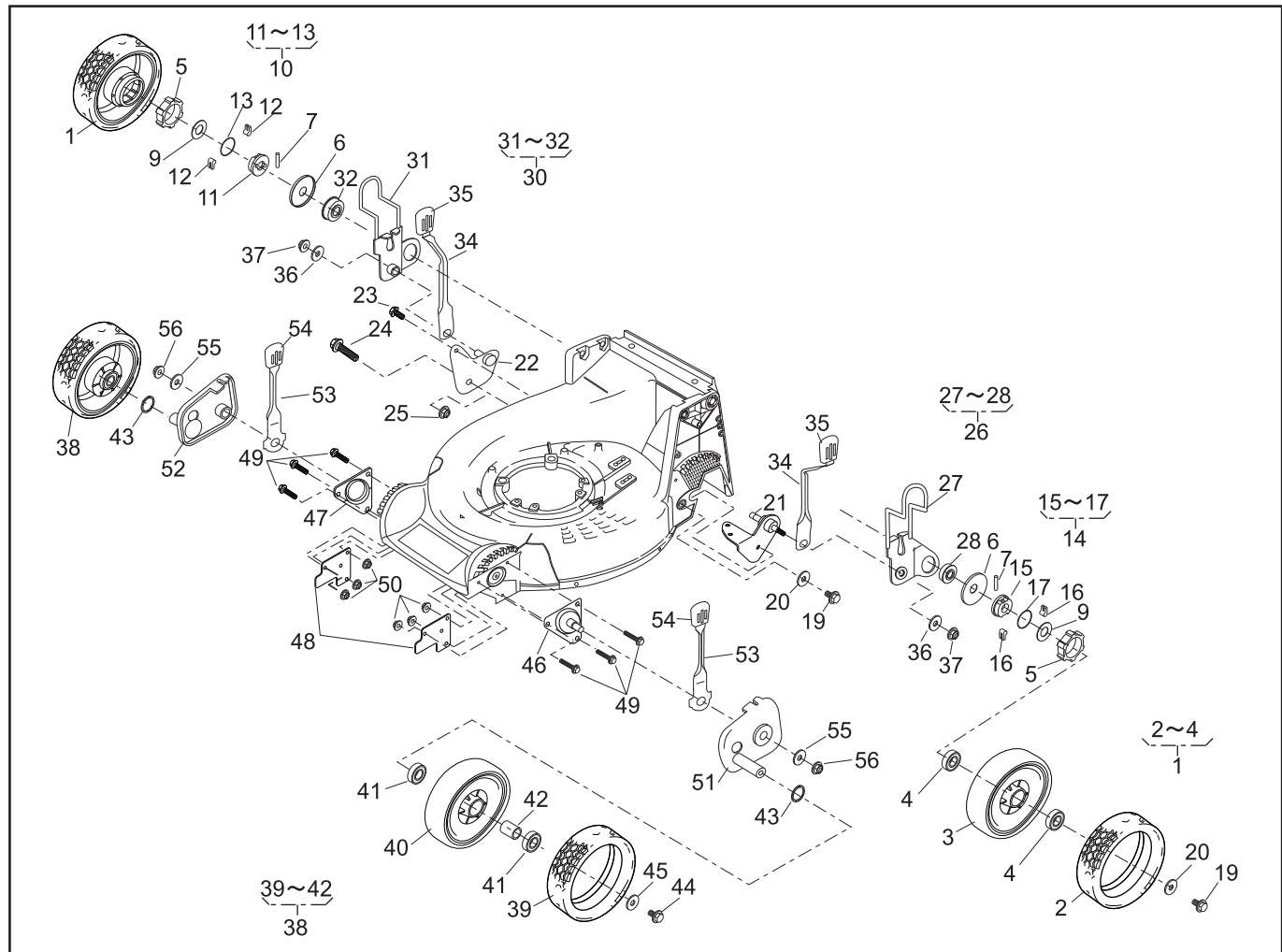


PARTS LIST

HST UNIT

46014-339-01

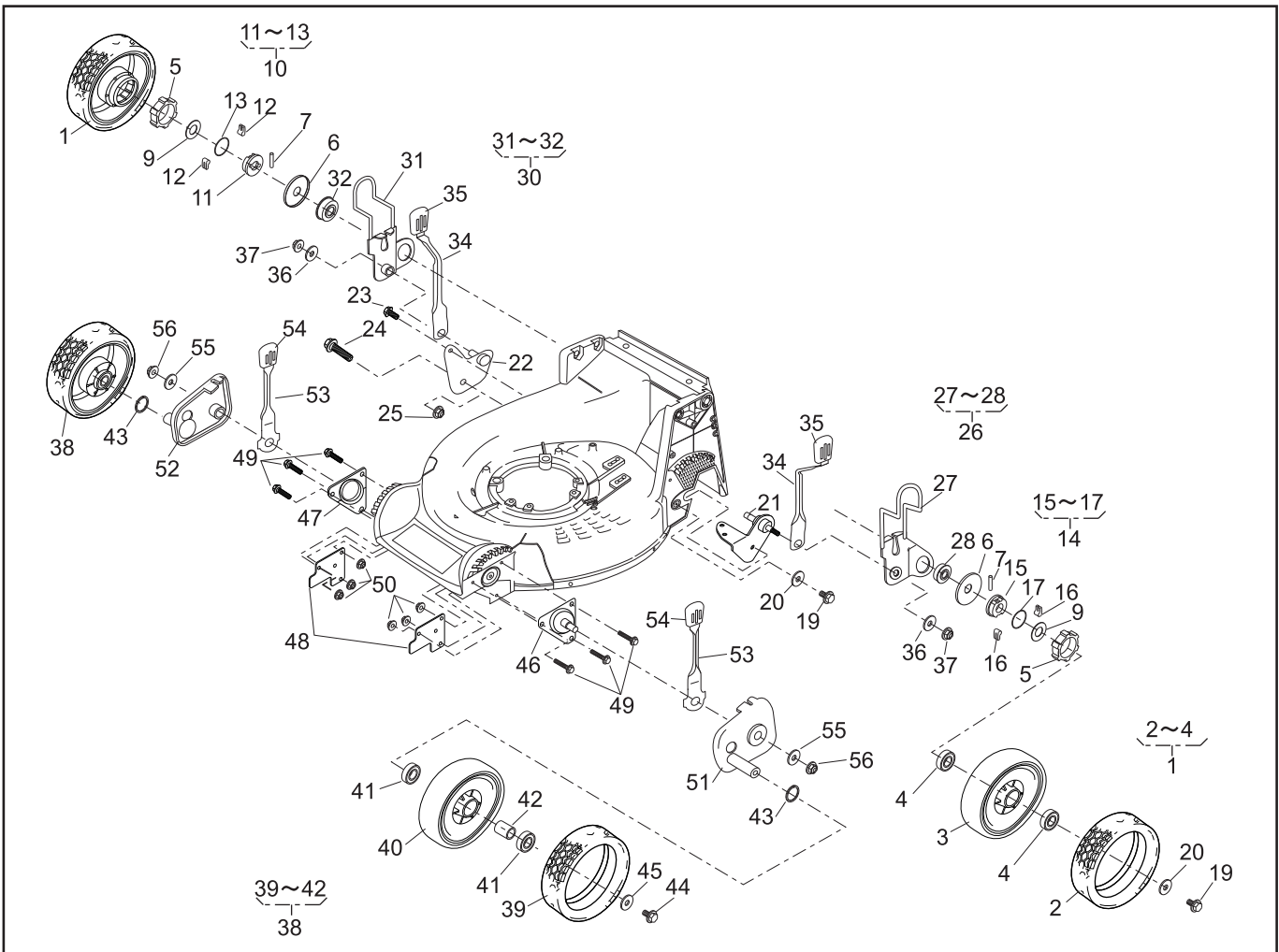
[illegible]



PARTS LIST

46012-346-00

REF. No.	PARTS No.			PARTS NAME	Q'TY	8"AI-WHEEL-HST			PRICE()	1/2		REMARKS
						INCLUDING				Lot.100	RECOMM.(%)	
1	71041	136		WHEEL ASS'Y(8"A.W.)	2							
2	91086	113		TIRE	2							
3				WHEEL	2							
4	916B	6002		BEARING	4							
5	11086	119		STOPPER	2							
6	61003	112		THRUST PLATE	2							
7	31034	137		PIN	2							
8												
9	68036	146		WASHER	2							
10	71158	101		RATCHET ASS'Y(R)	1							
11	11102	138		HOLDER	1							
12	31034	170		PIN	2							
13	68013	266		SPRING	1							
14	71158	102		RATCHET ASS'Y(L)	1							
15	11102	138		HOLDER	1							
16	31034	170		PIN	2							
17	68013	266		SPRING	1							
18												
19	31057	181		HEXAGON BOLT	3							
20	68036	101		WASHER	3							
21	11006	162		STAY C.P.(HST)	1							
22	11006	152		STAY C.P.(RR)	1							
23	342L	0612		FLANGE TAPPING BOLT	1							
24	31057	155		HEXAGON BOLT	1							
25	569L	0800		FLANGE NYLON NUT	1							
26	71122	112		ADJUSTER ASS'Y(L)	1							
27	11142	131		ADJUSTER(RL)	1							
28	945L	0349		BEARING	1							



PARTS LIST

46012-346-00

REF. No.	PARTS No.			PARTS NAME	Q'TY	8"AI-WHEEL-HST			PRICE()	2/2		REMARKS
						INCLUDING				Lot.100	RECOMM.(%)	
29												
30	71122	113		ADJUSTER ASS'Y(R)	1							
31	11142	132		ADJUSTER(RR)	1							
32	945L	0349		BEARING	1							
33												
34	11150	105	09	ADJUST LEVER	2							
35	36061	121		KNOB	2							
36	613L	0800		PLAIN WASHER	2							
37	569L	0800		FLANGE NYLON NUT	2							
38	71041	135		WHEEL ASS'Y(8"A.W.)	2							
39	91086	113		TIRE	2							
40				WHEEL	2							
41	916B	6002		BEARING	4							
42	11083	332		COLLAR	2							
43	51113	119		RING	2							
44	31057	181		HEXAGON BOLT	2							
45	68036	101		WASHER	2							
46	11006	153		STAY C.P.(FL)	1							
47	11006	154		STAY C.P.(FR)	1							
48	11113	409		STAY	2							
49	335L	0625		FLANGE BOLT	6							
50	569L	0600		FLANGE NYLON NUT	6							
51	11142	129		ADJUSTER(FL)	1							
52	11142	130		ADJUSTER(FR)	1							
53	11150	109	09	ADJUST LEVER	2							
54	36061	121		KNOB	2							
55	613L	0800		PLAIN WASHER	2							
56	569L	0800		FLANGE NYLON NUT	2							