



# PARTS CATALOGUE NEWS

Honda Motor Co., Ltd. Service Division

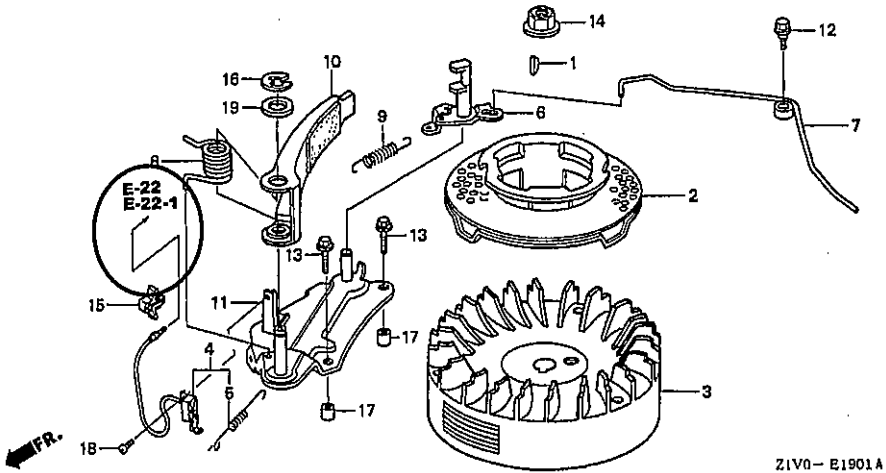
## PARTS CATALOGUE - CORRECTED

Printed in Japan

CODE NO.	BOOKLET TYPE	13Z1V401
	MICRO-FICHE	13Z1V4EA/FA
PARTS CATALOGUE NEWS	GXV160H2	
NEWS NO.	001	

Block No.	Ref. No.	Note	Part No.	Description	Reqd. QTY GXV 160 HZ	Serial No.	Parts catalogue code
-----------	----------	------	----------	-------------	-------------------------------	------------	----------------------

E-19-1 FLYWHEEL (2)



Z1V0-E1901A

E-19-1	15	E	90649-ZG9-T41	*PARTS NO. DELETION
--------	----	---	---------------	---------------------

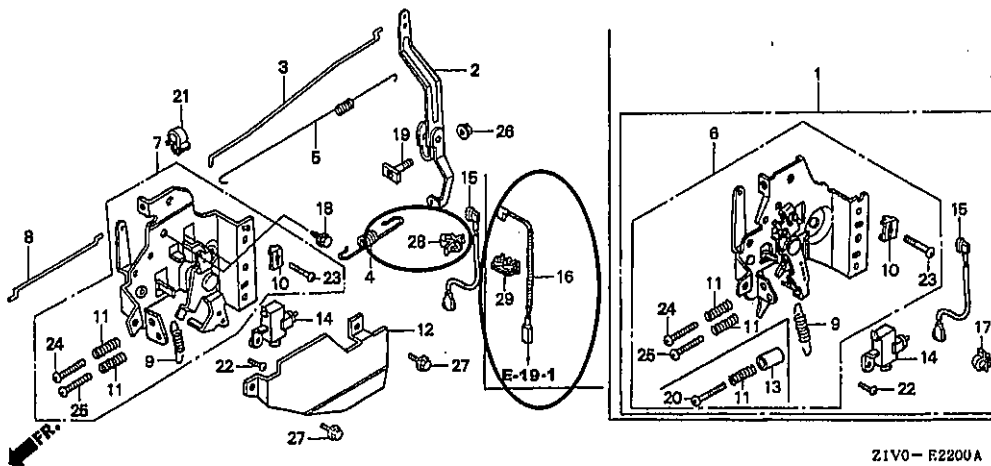
NOTE A:PART NO. CHANGE D:NEWLY PROVIDED E:PART NO. DELETION K:REQUIRED NO. CORRECTION L:APPLICATION SERIAL NO. CORRECTION  
T:APPLICATION CORRECTION Z:REMARKS CHANGE

PARTS CATALOGUE NEWS

BOOKNo. :13Z1V401

Block No.	Ref. No.	Note	Part No.	Description	Reqd. QTY.	Serial No.	Parts catalogue code
		D	30701-883-000	CLIP, HIGH TENSION CORD (8MM)	1	-----	A14, C12, SFC

E-22 CONTROL (1)



E-22	14	T	36100-ZE7-013	SWITCH ASSY., ENGINE STOP ....	1	-----	N1, N4, N5, N6, N6S, SFL, SFL1, SFY1
	16	E	36101-ZE7-812	*PARTS NO. DELETION			
		D	32195-Z1V-810	CORD, STOP SWITCH (BRAKE) ....	1	-----	C12, SFC
	17	T	36103-ZE1-000	HOLDER, STOP SWITCH CORD .....	1	-----	N1, N4, N5, N6, SFL, SFL1, SFY1
	28	D	46392-SC2-003	CLAMP, BRAKE PIPE (GRAY) .....	1	-----	N1, N4, N5, N6, N6S, SFL, SFL1, SFY1
	29	D	90505-MCT-000	CLAMP, PIPE .....	1	-----	C12, SFC

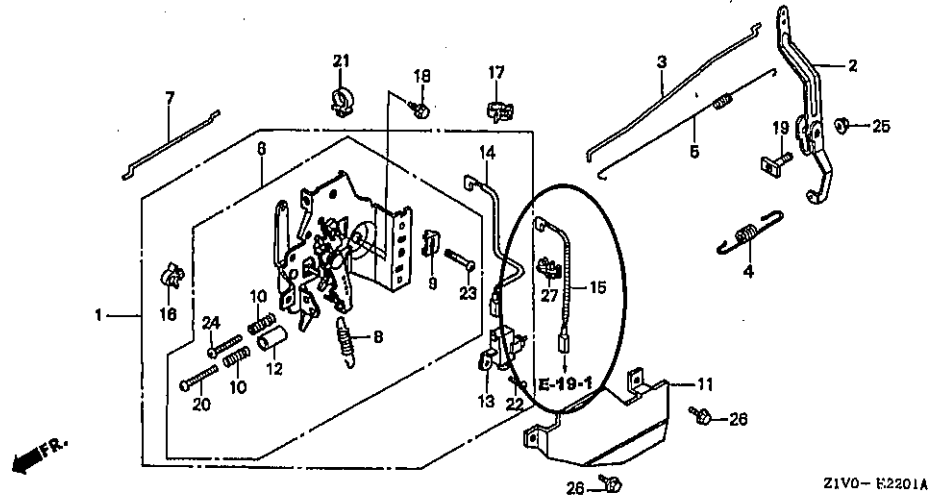
NOTE A:PART NO. CHANGE D:NEWLY PROVIDED E:PART NO. DELETION K:REQUIRED NO. CORRECTION L:APPLICATION SERIAL NO. CORRECTION  
T:APPLICATION CORRECTION Z:REMARKS CHANGE

PARTS CATALOGUE NEWS

BOOKNo. :13Z1V401

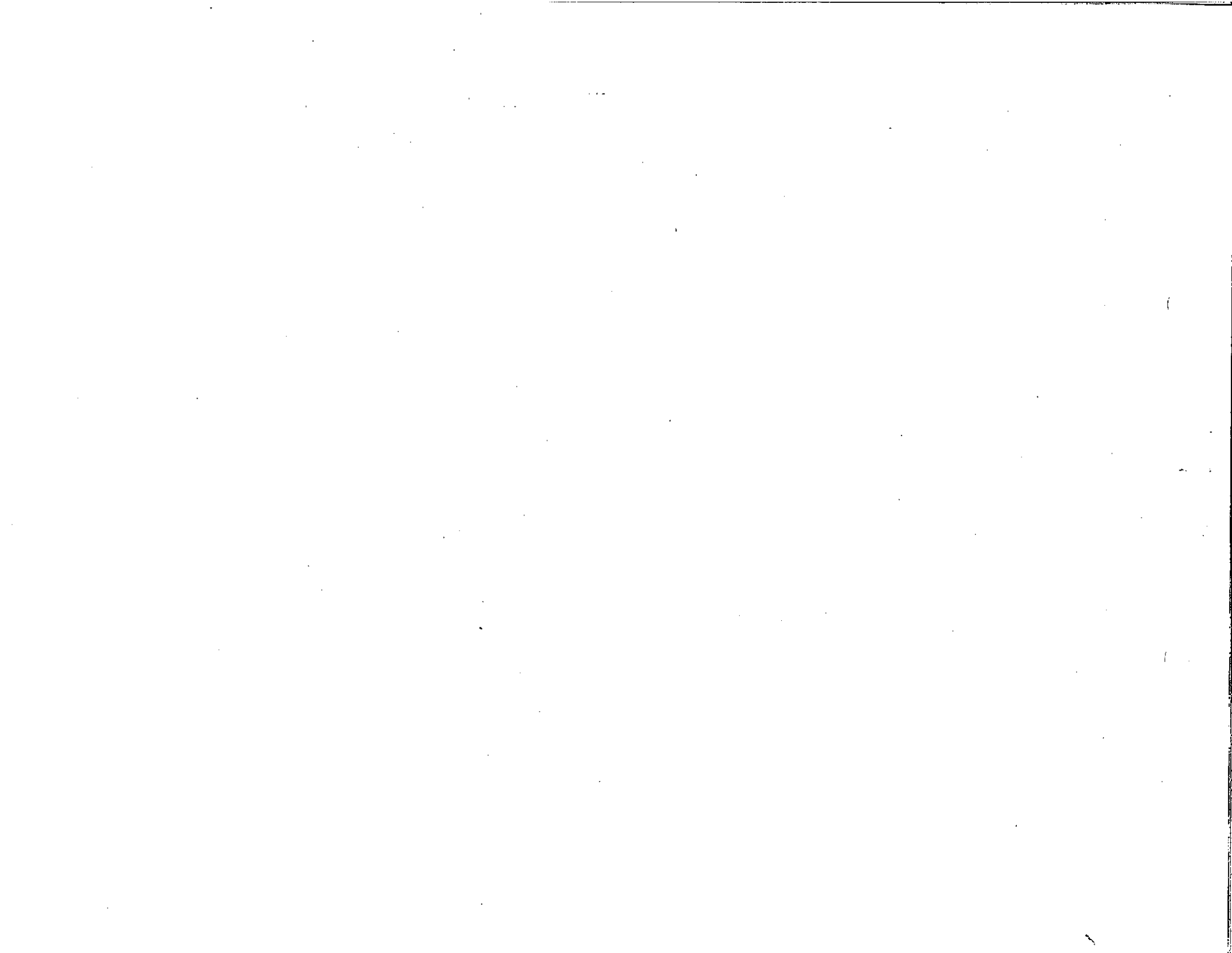
Block No.	Ref. No.	Note	Part No.	Description	Reqd. QTY	Serial No.	Parts catalogue code
					6XV 160 H2		

E-22-1 CONTROL (2)



E-22-1	13	T	36100-ZE7-013	SWITCH ASSY., ENGINE STOP ....	1	-----	N1F
	15	E	36101-ZE7-812	*PARTS NO. DELETION			
		D	32195-Z1V-810	CORD, STOP SWITCH (BRAKE) ....	1	-----	A14
	16	T	36103-ZE1-000	HOLDER, STOP SWITCH CORD .....	1	-----	N1F
	17	T	46392-SC2-003	CLAMP, BRAKE PIPE (GRAY) .....	1	-----	N1F
	27	D	90505-MCT-000	CLAMP, PIPE .....	1	-----	A14

NOTE A:PART NO. CHANGE D:NEWLY PROVIDED E:PART NO. DELETION K:REQUIRED NO. CORRECTION L:APPLICATION SERIAL NO. CORRECTION  
T:APPLICATION CORRECTION Z:REMARKS CHANGE





# PARTS CATALOGUE NEWS

Honda Motor Co., Ltd. Service Division

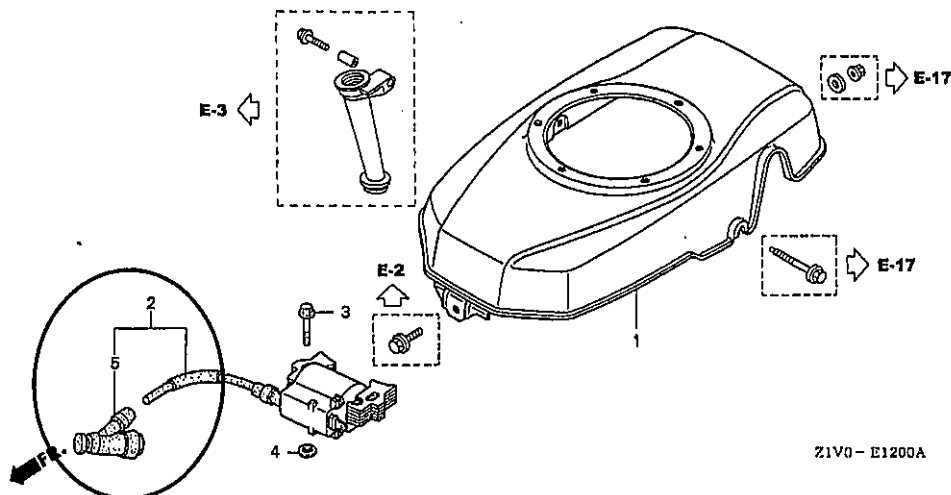
## PARTS CATALOGUE - CORRECTED

Printed in Japan

CODE NO.	BOOKLET TYPE	13Z1V401
	MICRO-FICHE	13Z1V4EA/FA
PARTS CATALOGUE NEWS	GXV160H2	
NEWS NO.	002	

Block No.	Ref. No.	Note	Part No.	Description	Reqd. QTY	Serial No.	Parts catalogue code
					GXV 160 H2		

E-12 FAN COVER



Z1V0-E1200A

E-12 3 E 30700-Z1V-003 \*PARTS NO. DELETION

NOTE A:PART NO.CHANGE D:NEWLY PROVIDED E:PART NO.DELETION K:REQUIRED NO.CORRECTION L:APPLICATION SERIAL NO.CORRECTION  
T:APPLICATION CORRECTION Z:REMARKS CHANGE

Block No.	Ref. No.	Note	Part No.	Description	Reqd. QTY-	Serial No.	Parts catalogue code
					GXY 160 H2		
		D	90015-883-000	BOLT, FLANGE, 6X28 .....	2		
	4	E	90015-883-000	*PARTS NO. DELETION			
		D	90581-GB5-610	WASHER, PLAIN, 6MM .....	2		
	5	D	30700-Z1V-003	CAP ASSY., NOISE SUPPRESSOR ..	1		
		E	90581-GB5-610	*PARTS NO. DELETION			

NOTE A:PART NO.CHANGE D:NEWLY PROVIDED E:PART NO.DELETION K:REQUIRED NO.CORRECTION L:APPLICATION SERIAL NO.CORRECTION  
T:APPLICATION CORRECTION Z:REMARKS CHANGE



# PARTS CATALOGUE NEWS

Honda Motor Co., Ltd. Service Division

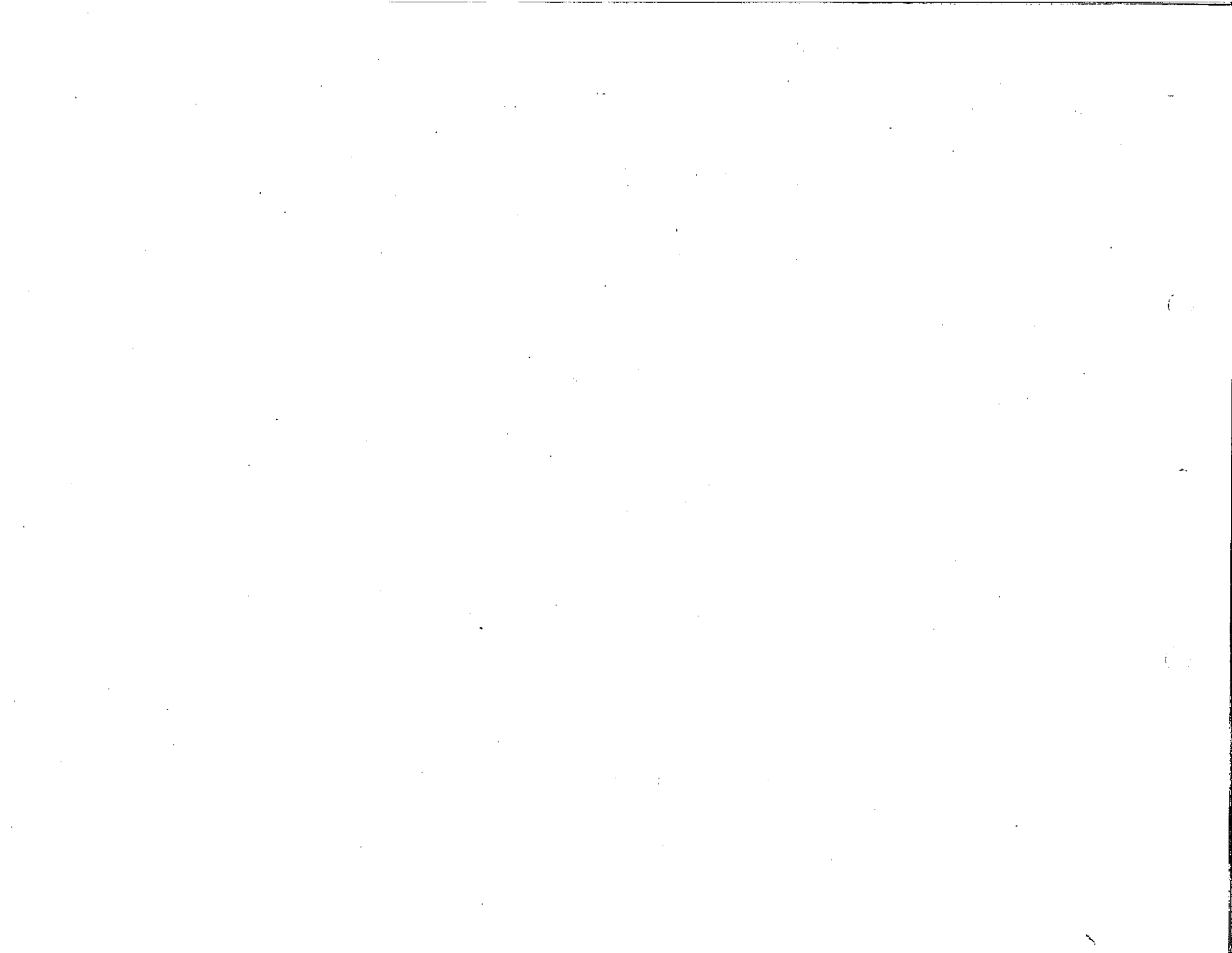
## PARTS CATALOGUE - CORRECTED

Printed in Japan

CODE NO.	BOOKLET TYPE	13Z1V401
	MICRO-FICHE	13Z1V4EA/FA
PARTS CATALOGUE NEWS	GXV160H2	
NEWS NO.	003	

Block No.	Ref. No.	Note	Part No.	Description	Reqd. QTY	Serial No.	Parts catalogue code
					GXV 160 H2		
E-2	6	E	12311-ZG9-000	*PARTS NO. DELETION			
		D	12311-ZG9-800	COVER, HEAD .....	1		
E-3	5	T	12125-Z1V-000	PLATE, GUIDE .....	1	-----	N1, N1F, N4, N5, N6, N6S, SFL, SFL1, SFY1
		E	43143-ZE7-000	*PARTS NO. DELETION			
			D	43143-Z1V-000	BASE COMP., HOLDER .....	1	-----
E-17	2	T	90022-888-010	BOLT, FLANGE, 6X20(CT200) ....	2	-----	N1, N1F, N4, N5, N6, N6S, SFL, SFL1, SFY1
		D	16952-ZA8-800	STRAINER, FUEL .....	1		

NOTE A:PART NO.CHANGE D:NEWLY PROVIDED E:PART NO.DELETION K:REQUIRED NO.CORRECTION L:APPLICATION SERIAL NO.CORRECTION  
T:APPLICATION CORRECTION Z:REMARKS CHANGE







# PARTS CATALOGUE NEWS

Honda Motor Co., Ltd. Service Division

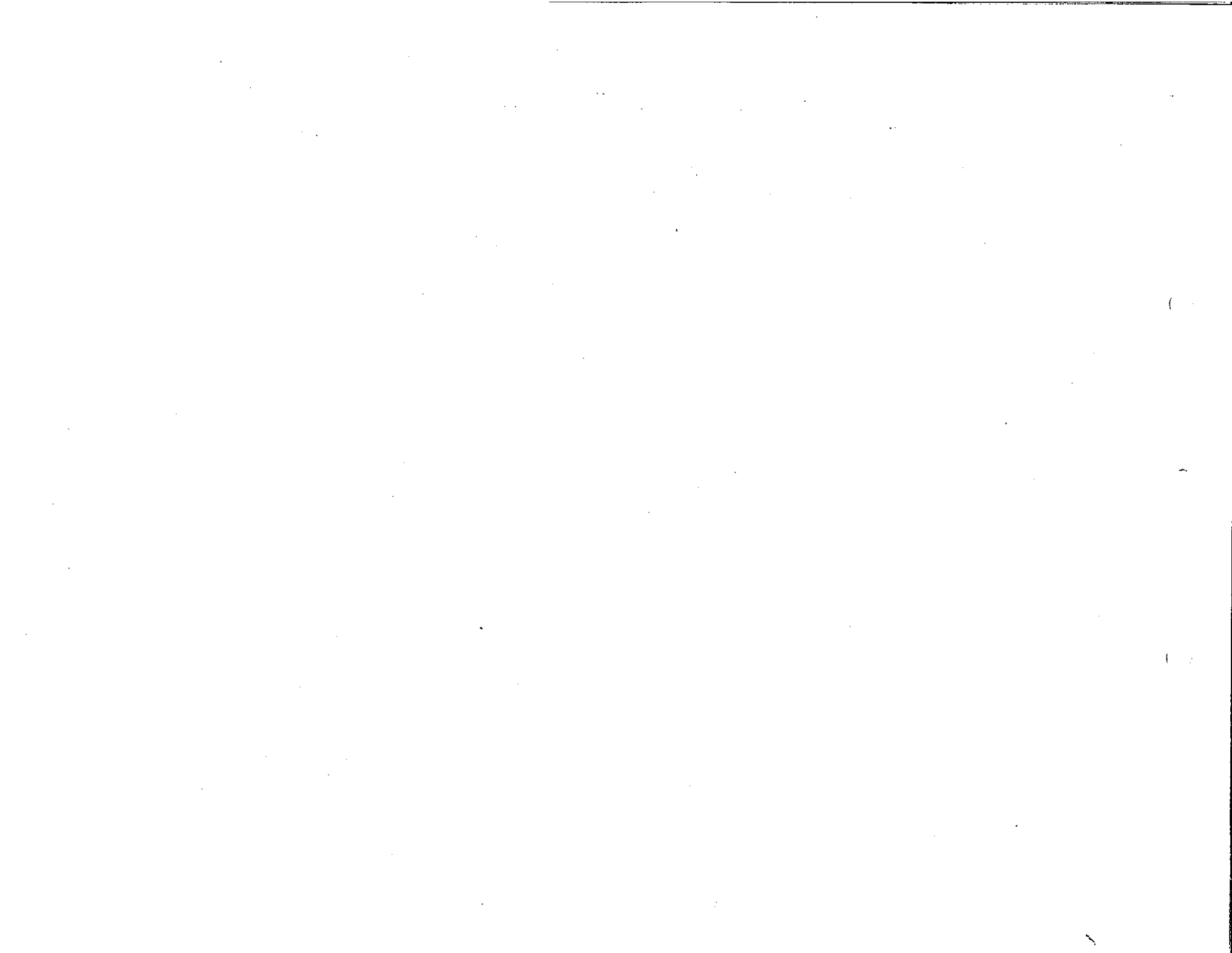
## PARTS CATALOGUE - CORRECTED

Printed in Japan

CODE NO.	BOOKLET TYPE	13Z1V401
	MICRO-FICHE	13Z1V4EA/FA
PARTS CATALOGUE NEWS	GXV160H2	
NEWS NO.	004	

Block No.	Ref. No.	Note	Part No.	Description	Reqd. QTY	Serial No.	Parts catalogue code
					GXV 160 H2		
E-17	13	E	17636-21V-000	*PARTS NO. DELETION			
		D	17636-21V-010	GAUGE, FUEL LEVEL .....	1		
E-19-1	4	E	36100-21V-810	*PARTS NO. DELETION			
		D	35120-21V-811	SWITCH ASSY., ENGINE STOP (BRAKE)	1	-----	A14, C12, SFC

NOTE A:PART NO.CHANGE D:NEWLY PROVIDED E:PART NO.DELETION K:REQUIRED NO.CORRECTION L:APPLICATION SERIAL NO.CORRECTION  
T:APPLICATION CORRECTION Z:REMARKS CHANGE





# PARTS CATALOGUE NEWS

Honda Motor Co., Ltd. Service Division

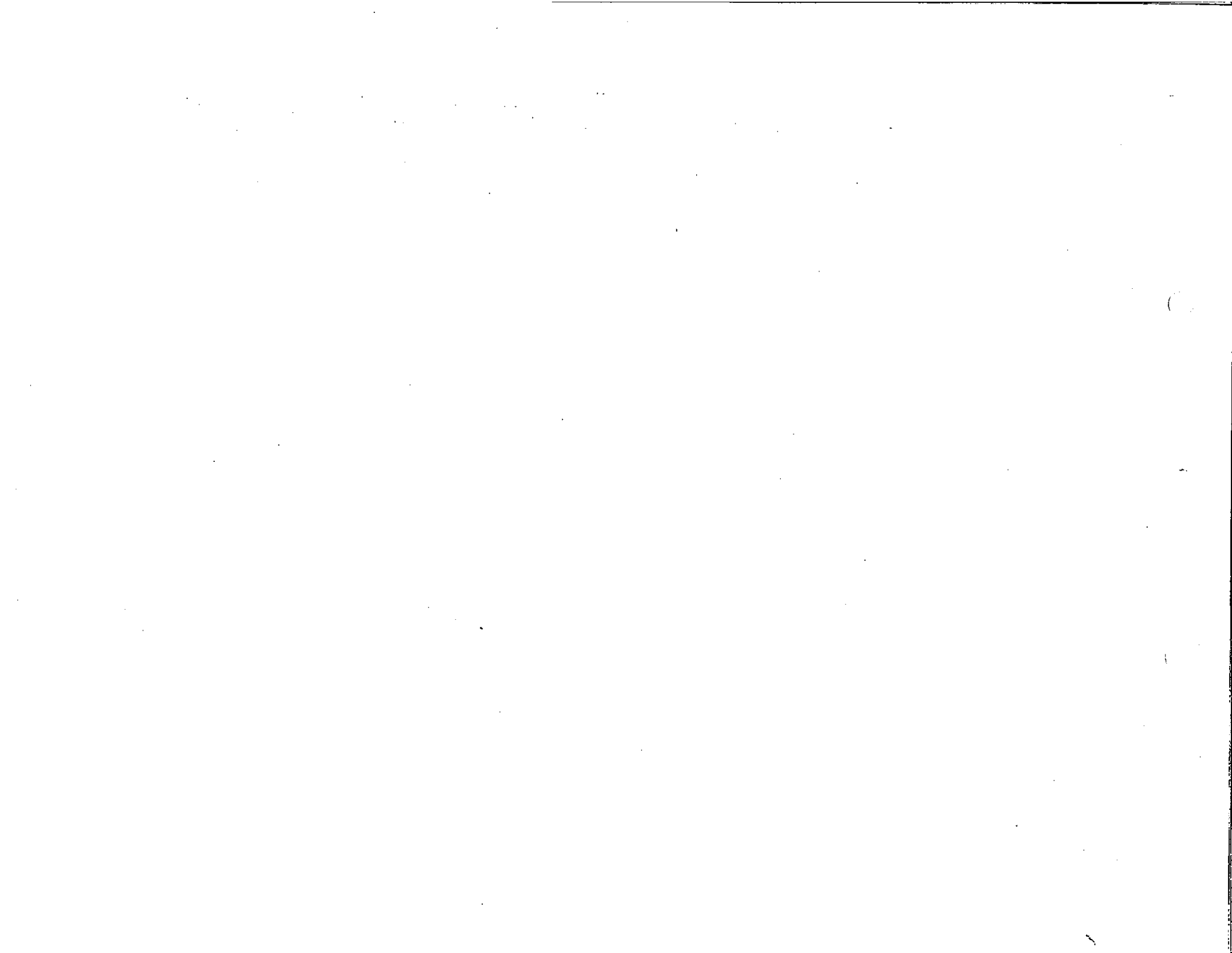
## PARTS CATALOGUE - CORRECTED

Printed in Japan

CODE NO.	BOOKLET TYPE	13Z1V401
	MICRO-FICHE	13Z1V4EA/FA
PARTS CATALOGUE NEWS	GXV160H2	
NEWS NO.	005	

Block No.	Ref. No.	Note	Part No.	Description	Reqd. QTY	Serial No.	Parts catalogue code
					GXV 160 H2		
E-12	4	E	90581-GB5-610	*PARTS NO. DELETION			
		D	90581-Z1V-000	WASHER, PLAIN, 6MM .....	2		

NOTE A: PART NO. CHANGE D: NEWLY PROVIDED E: PART NO. DELETION K: REQUIRED NO. CORRECTION L: APPLICATION SERIAL NO. CORRECTION  
T: APPLICATION CORRECTION Z: REMARKS CHANGE





# PARTS CATALOGUE NEWS

Honda Motor Co., Ltd. Service Division

## PARTS CATALOGUE - CORRECTED

Printed in Japan

CODE NO.	BOOKLET TYPE	13Z1V401
	MICRO-FICHE	13Z1V4EA/FA
PARTS CATALOGUE NEWS	GXV160H2	
NEWS NO.	006	

### GXV160H2-T1AH TYPE sales parts information

NOTE: This Parts Catalogue News explains only the parts of the different model that are produced to conform to addition of the GXV160H2-T1AH type.

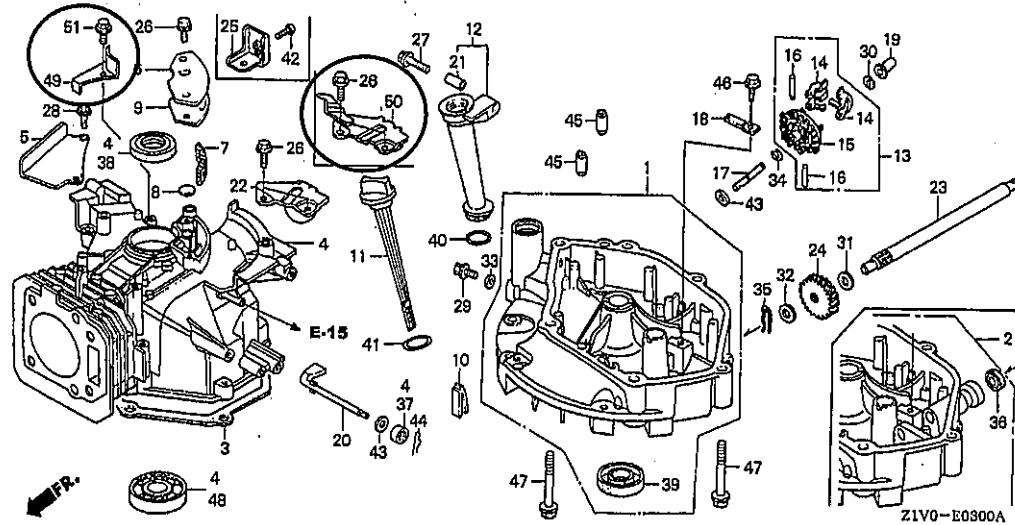
As for the parts not listed on this Parts Catalogue News, use the parts of the GXV160H2-N1 type.

Model	Type		Parts catalogue type	Applicable engine serial No.	Applicable carburetor identification No.
GXV160H2	N1	Base model	N1	GJAAH-1000001~	BE66J A
	T1AH	Additional model	T1AH	GJAAH-1000001~	

NOTE A:PART NO. CHANGE D:NEWLY PROVIDED E:PART NO. DELETION K:REQUIRED NO. CORRECTION L:APPLICATION SERIAL NO. CORRECTION  
T:APPLICATION CORRECTION Z:REMARKS CHANGE

Block No.	Ref. No.	Part No.	Description	Reqd. QTY	Base Part No.	Parts catalogue code
-----------	----------	----------	-------------	-----------	---------------	----------------------

E-3 CYLINDER BARREL



E-3	22		STAY COMP., TANK .....	0	17517-ZE7-000	
	49	12126-Z1V-000	PLATE A, GUIDE .....	1		
	50	17560-Z1V-000	STAY COMP., TANK .....	1		
	51	90013-883-000	BOLT, FLANGE, 6X12(CT200) ....	1		
E-7	5		CRANKSHAFT COMP. ....	0	13310-ZE7-010	
	13	13310-ZE7-V20	CRANKSHAFT COMP. ....	1		
E-11	1		STARTER ASSY., RECOIL *R280*..... POWER RED	0	28400-ZE7-003ZC	
	2		CASE COMP., RECOIL STARTER *R280*..... POWER RED	0	28410-ZE7-003ZD	
	3		PULLEY, RECOIL STARTER .....	0	28420-ZE7-003	
	4		RATCHET, STARTER .....	0	28422-896-010	
	5		PLATE, FRICTION .....	0	28431-896-000	

NOTE A:PART NO. CHANGE D:NEWLY PROVIDED E:PART NO. DELETION K:REQUIRED NO. CORRECTION L:APPLICATION SERIAL NO. CORRECTION  
T:APPLICATION CORRECTION Z:REMARKS CHANGE

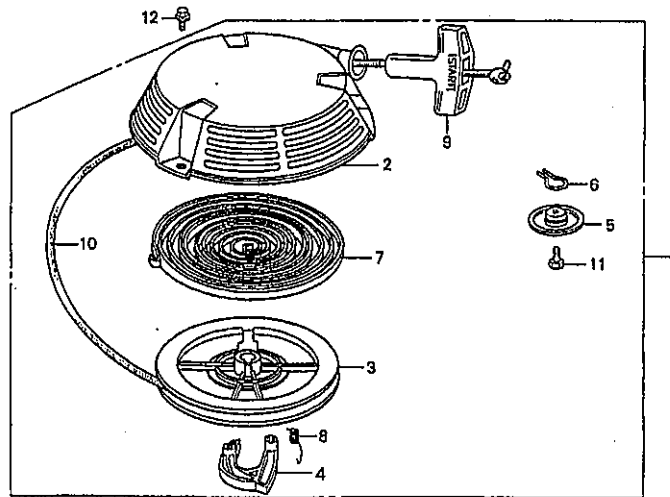
PARTS CATALOGUE NEWS

BOOKNo. :13Z1V401

Block No.	Ref. No.	Part No.	Description	Reqd. QTY	Base Part No.	Parts catalogue code
	6		SPRING, FRICTION .....	0	28441-896-000	
	7		SPRING, RECOIL STARTER .....	0	28442-896-700	
	8		SPRING, RETURN .....	0	28443-896-000	
	9		NOB, RECOIL STARTER .....	0	28461-ZE1-003	
	10		ROPE, RECOIL STARTER .....	0	28462-ZA7-003	
	11		BOLT, HEX., 6X12 .....	0	92101-06012-0H	
	12		BOLT, FLANGE, 6X8 .....	0	95701-06008-00	

E-11-1 RECOIL STARTER (2)

Service Item	F.R.T.
STARTER ASSY., RECOIL.....	0.1
RATCHET, STARTER.....	0.2
SPRING, RETURN	
PULLEY, RECOIL STARTER.....	0.3
ROPE, RECOIL STARTER	
SPRING, RECOIL STARTER	



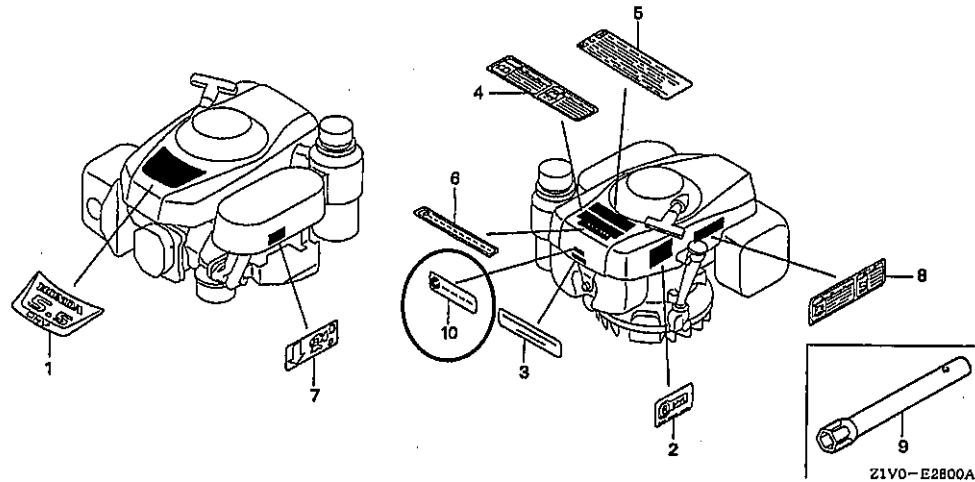
-Z1V0-E1101

E-11-1	1	28400-ZE7-003ZB	STARTER ASSY., RECOIL *NH1*.....BLACK	1
	2	28410-ZE7-003ZB	CASE COMP., RECOIL STARTER *NH1*.....BLACK	1
	3	28420-ZE7-003	PULLEY, RECOIL STARTER .....	1
	4	28422-896-010	RATCHET, STARTER .....	1

NOTE A:PART NO.CHANGE D:NEWLY PROVIDED E:PART NO.DELETION K:REQUIRED NO.CORRECTION L:APPLICATION SERIAL NO.CORRECTION  
T:APPLICATION CORRECTION Z:REMARKS CHANGE

Block No.	Ref. No.	Part No.	Description	Reqd. QTY	Base Part No.	Parts catalogue code
				6XV 160 H2		
	5	28431-896-000	PLATE, FRICTION .....	1		
	6	28441-896-000	SPRING, FRICTION .....	1		
	7	28442-896-700	SPRING, RECOIL STARTER .....	1		
	8	28443-896-000	SPRING, RETURN .....	1		
	9	28461-ZE1-003	KNOB, RECOIL STARTER .....	1		
	10	28462-ZA7-003	ROPE, RECOIL STARTER .....	1		
	11	92101-06012-0H	BOLT, HEX., 6X12 .....	1		
	12	95701-06008-00	BOLT, FLANGE, 6X8 .....	3		
E-12	1	19610-Z1V-000ZB	COVER COMP., FAN *NH1*..... BLACK	1	19610-Z1V-000ZA	
E-17	4	17510-Z1V-010	TANK COMP., FUEL .....	1	17510-Z1V-000	

E-28 LABEL



E-28	10	87637-ZM3-800	MARK (C-TICK) .....	1		
------	----	---------------	---------------------	---	--	--

NOTE A:PART NO. CHANGE D:NEWLY PROVIDED E:PART NO. DELETION K:REQUIRED NO. CORRECTION L:APPLICATION SERIAL NO. CORRECTION  
T:APPLICATION CORRECTION Z:REMARKS CHANGE





# PARTS CATALOGUE NEWS

Honda Motor Co., Ltd. Service Division

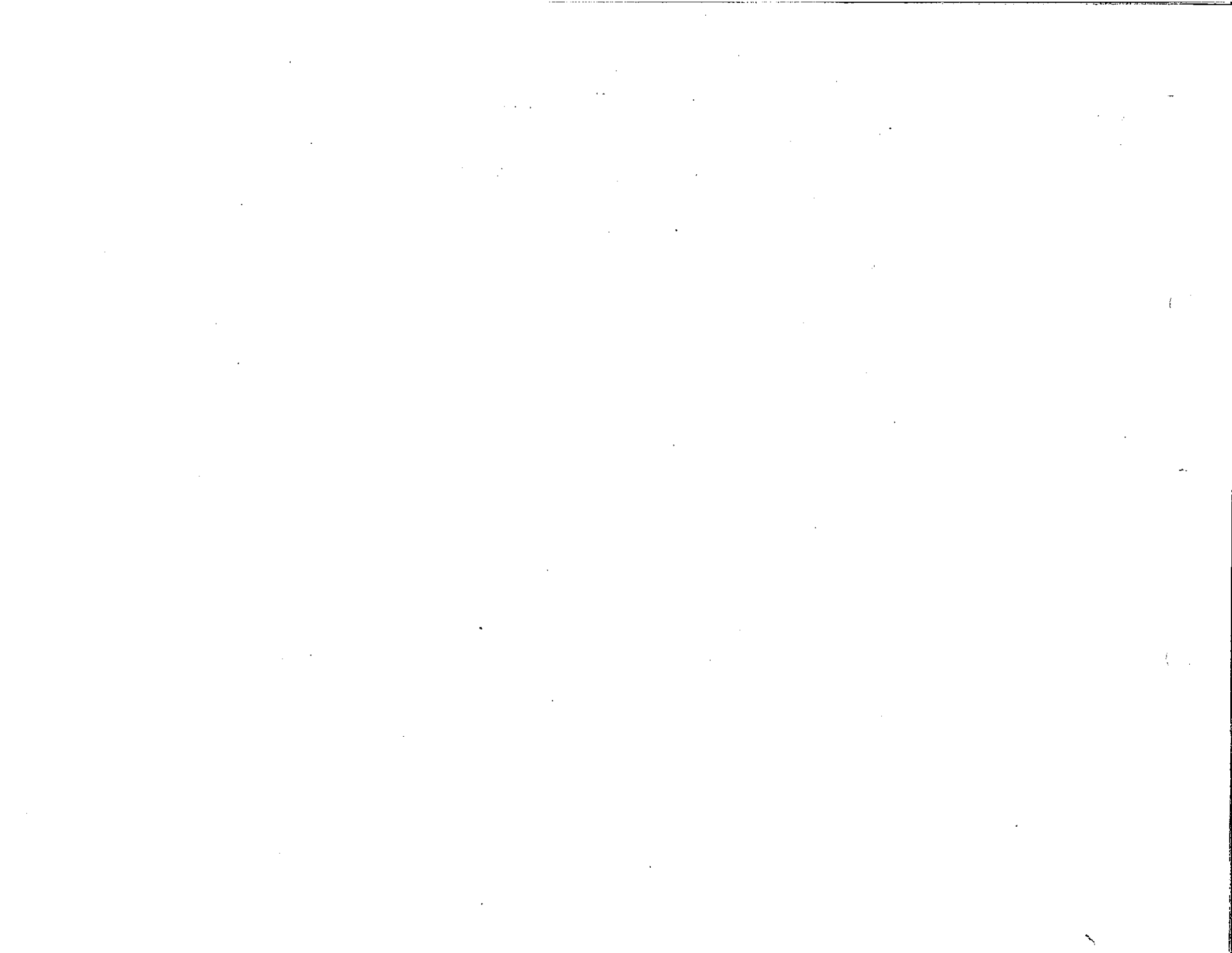
## PARTS CATALOGUE - CORRECTED

Printed in Japan

CODE NO.	BOOKLET TYPE	13Z1V401
	MICRO-FICHE	13Z1V4EA/FA
PARTS CATALOGUE NEWS	GXV160H2	
NEWS NO.	007	

Block No.	Ref. No.	Note	Part No.	Description	Reqd. QTY	Serial No.	Parts catalogue code
					GXV 160 H2		
E-17	4	E	17510-Z1V-000	*PARTS NO. DELETION			
		T	17510-Z1V-010	TANK COMP., FUEL .....	1		

NOTE A: PART NO. CHANGE D: NEWLY PROVIDED E: PART NO. DELETION K: REQUIRED NO. CORRECTION L: APPLICATION SERIAL NO. CORRECTION  
 T: APPLICATION CORRECTION Z: REMARKS CHANGE





# PARTS CATALOGUE NEWS

Honda Motor Co., Ltd. Service Division

## PARTS CATALOGUE - CORRECTED

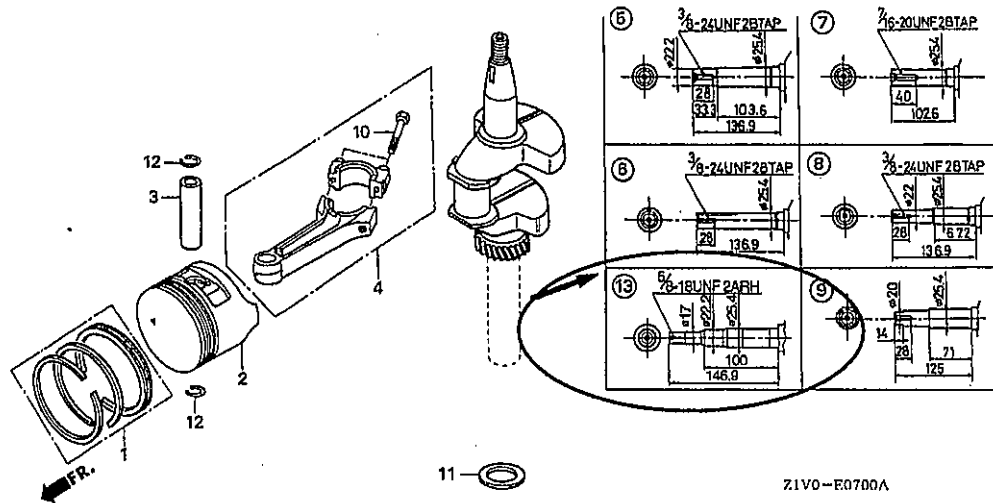
Printed in Japan

CODE NO.	BOOKLET TYPE	13Z1V401
	MICRO-FICHE	13Z1V4EA/FA
PARTS CATALOGUE NEWS	GXV160H2	
NEWS NO.	008	

Block No.	Ref. No.	Note	Part No.	Description	Reqd. QTY	Serial No.	Parts catalogue code
					GXV 160 H2		

• ILLUSTRATION-CORRECTED

### E-7 CRANKSHAFT/PISTON



Z1V0-E0700A

NOTE A:PART NO. CHANGE D:NEWLY PROVIDED E:PART NO. DELETION K:REQUIRED NO. CORRECTION L:APPLICATION SERIAL NO. CORRECTION  
T:APPLICATION CORRECTION Z:REMARKS CHANGE

## PARTS CATALOGUE NEWS

BOOKNo. :13Z1V401

Block No.	Ref. No.	Note	Part No.	Description	Reqd. QTY.	Serial No.	Parts catalogue code
					6XV 160 H2		
E-11	1	D	28400-ZE7-003ZB	STARTER ASSY., RECOIL *NH1*.....BLACK	1	-----	T1AH
	2	D	28410-ZE7-003ZB	CASE COMP., RECOIL STARTER *NH1*.....BLACK	1	-----	T1AH
	3	T	28420-ZE7-003	PULLEY, RECOIL STARTER .....	1		
	4	T	28422-896-010	RATCHET, STARTER .....	1		
	5	T	28431-896-000	PLATE, FRICTION .....	1		
	6	T	28441-896-000	SPRING, FRICTION .....	1		
	7	T	28442-896-700	SPRING, RECOIL STARTER .....	1		
	8	T	28443-896-000	SPRING, RETURN .....	1		
	9	T	28461-ZE1-003	KNOB, RECOIL STARTER .....	1		
	10	T	28462-ZA7-003	ROPE, RECOIL STARTER .....	1	-----	A14, C12, N1, N4, N5, N6, N6S, SFC, SFL, SFL1, SFY1, T1AH
	11	T	92101-06012-OH	BOLT, HEX., 6X12 .....	1		
	12	T	95701-06008-00	BOLT, FLANGE, 6X8 .....	3		
E-11-1	1	E	28400-ZE7-003ZB	*PARTS NO. DELETION			
	2	E	28410-ZE7-003ZB	*PARTS NO. DELETION			
	3	E	28420-ZE7-003	*PARTS NO. DELETION			
	4	E	28422-896-010	*PARTS NO. DELETION			
	5	E	28431-896-000	*PARTS NO. DELETION			
	6	E	28441-896-000	*PARTS NO. DELETION			
	7	E	28442-896-700	*PARTS NO. DELETION			
	8	E	28443-896-000	*PARTS NO. DELETION			
	9	E	28461-ZE1-003	*PARTS NO. DELETION			
	10	E	28462-ZA7-003	*PARTS NO. DELETION			
	11	E	92101-06012-OH	*PARTS NO. DELETION			
	12	E	95701-06008-00	*PARTS NO. DELETION			

NOTE A:PART NO.CHANGE D:NEWLY PROVIDED E:PART NO.DELETION K:REQUIRED NO.CORRECTION L:APPLICATION SERIAL NO.CORRECTION  
T:APPLICATION CORRECTION Z:REMARKS CHANGE



# PARTS CATALOGUE NEWS

Honda Motor Co., Ltd. Service Division

## PARTS CATALOGUE - CORRECTED

Printed in Japan

CODE NO.	BOOKLET TYPE	13Z1V401
	MICRO-FICHE	13Z1V4EA/FA
PARTS CATALOGUE NEWS	GXV160H2	
NEWS NO.	009	

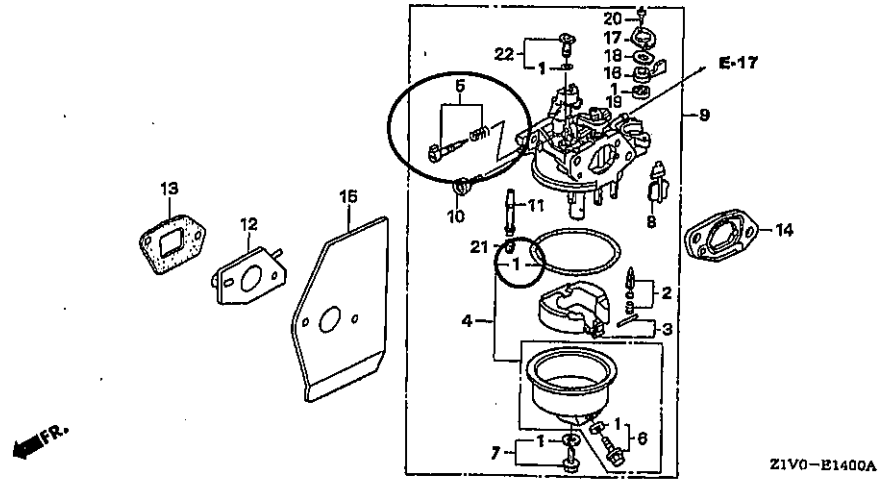
Block No.	Ref. No.	Note	Part No.	Description	Reqd. QTY GXV 160 H2	Serial No.	Parts catalogue code
E-11	1	D	28400-ZE7-V11ZB	STARTER ASSY., RECOIL (LONG)	1	-----	N1F
				*NH1*.....BLACK			
	T	28400-ZE7-003ZB	STARTER ASSY., RECOIL	1	-----	A14, SFL1, T1AH	
	2	T	28410-ZE7-003ZB	CASE COMP., RECOIL STARTER	1	-----	A14, N1F, SFL1, T1AH
				*NH1*.....BLACK			
E-12	1	T	19610-Z1V-000ZB	COVER COMP., FAN	1	-----	A14, N1F, SFL1, T1AH
				*NH1*.....BLACK			

NOTE A:PART NO.CHANGE D:NEWLY PROVIDED E:PART NO.DELETION K:REQUIRED NO.CORRECTION L:APPLICATION SERIAL NO.CORRECTION  
T:APPLICATION CORRECTION Z:REMARKS CHANGE

Block No.	Ref. No.	Note	Part No.	Description	Reqd. QTY 6XV 160 H2	Serial No.	Parts catalogue code
-----------	----------	------	----------	-------------	-------------------------------	------------	----------------------

ILLUSTRATION-CORRECTED

E-14 CARBURETOR



E-17	1	K	16854-ZH8-000	RUBBER, SUPPORTER (107MM) ....	2		
------	---	---	---------------	--------------------------------	---	--	--

NOTE A: PART NO. CHANGE D: NEWLY PROVIDED E: PART NO. DELETION K: REQUIRED NO. CORRECTION L: APPLICATION SERIAL NO. CORRECTION  
T: APPLICATION CORRECTION Z: REMARKS CHANGE

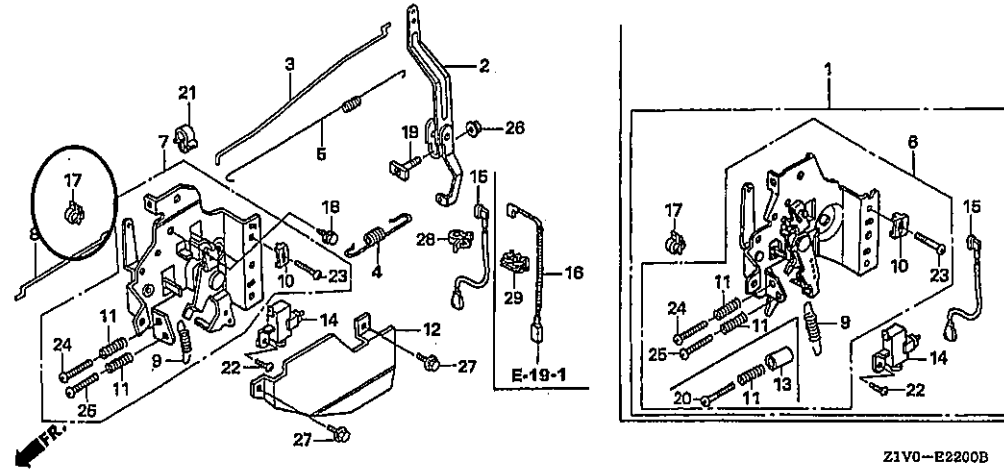
PARTS CATALOGUE NEWS

BOOKNo. :13Z1V401

Block No.	Ref. No.	Note	Part No.	Description	Reqd. QTY	Serial No.	Parts catalogue code
					GXY 160 H2		

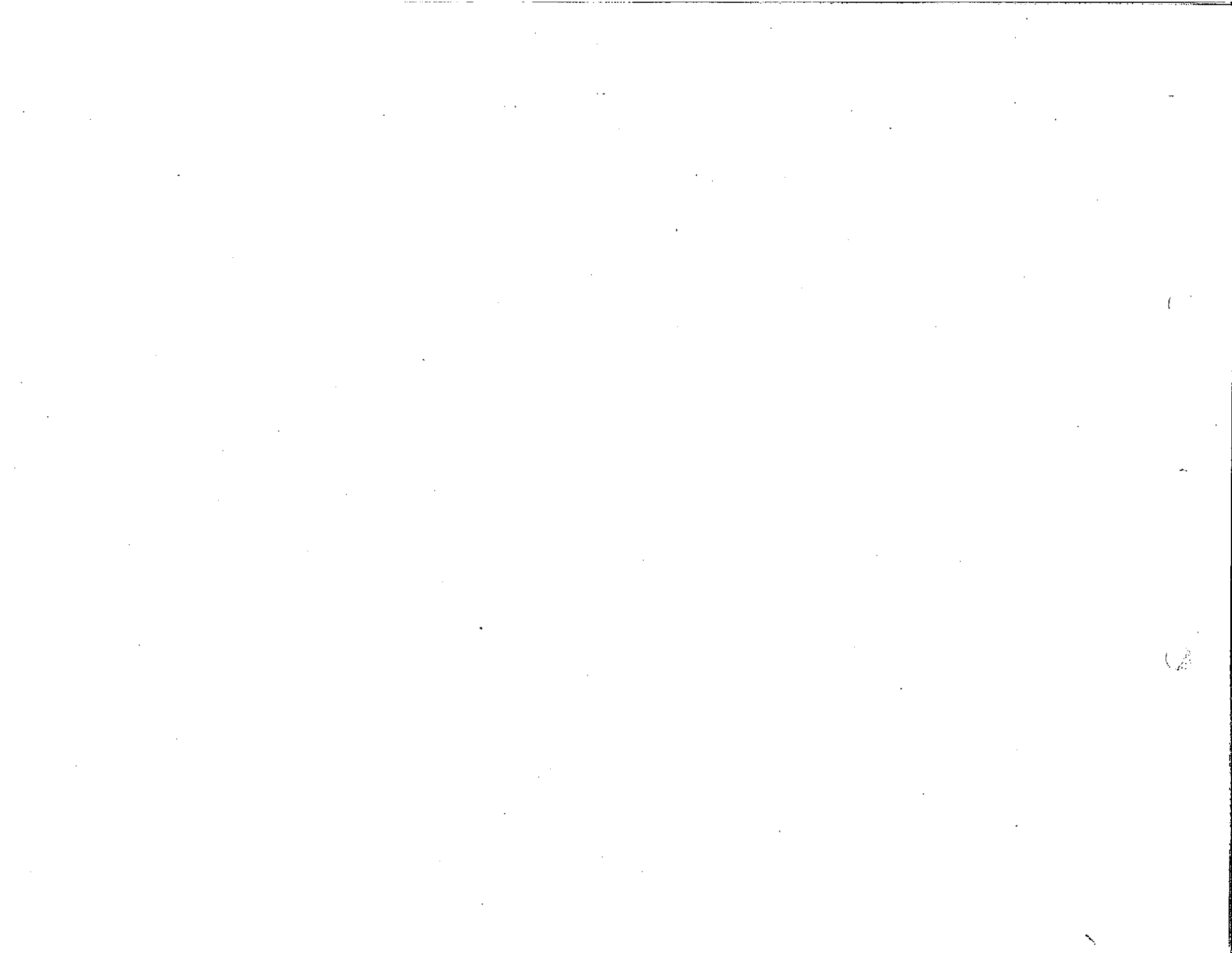
• ILLUSTRATION-CORRECTED

E-22      CONTROL (1)



E-22	14	T	36100-ZE7-013	SWITCH ASSY., ENGINE STOP ....	1	-----	N1, N4, N5, N6, N6S, SFL, SFL1, SFY1, T1AH
	22	T	93500-04008-0A	SCREW, PAN, 4X8 .....	1	-----	N1, N4, N5, N6, N6S, SFL, SFL1, SFY1, T1AH
E-22-1	13	T	36100-ZE7-013	SWITCH ASSY., ENGINE STOP ....	1	-----	N1F
	22	T	93500-04008-0A	SCREW, PAN, 4X8 .....	1	-----	N1F

NOTE A:PART NO. CHANGE D:NEWLY PROVIDED E:PART NO. DELETION K:REQUIRED NO. CORRECTION L:APPLICATION SERIAL NO. CORRECTION  
T:APPLICATION CORRECTION Z:REMARKS CHANGE







# PARTS CATALOGUE NEWS

Honda Motor Co., Ltd. Service Division

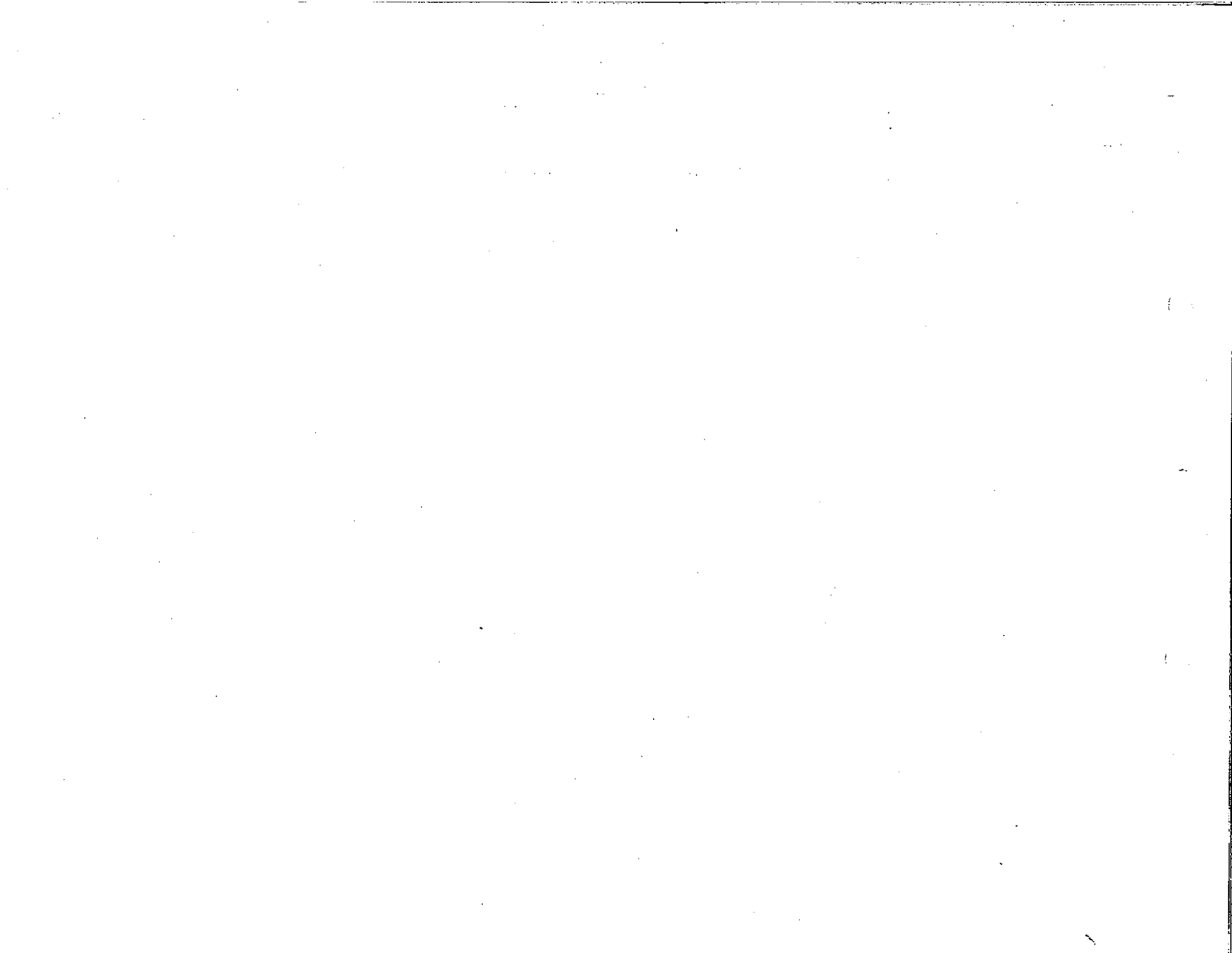
## PARTS CATALOGUE - CORRECTED

Printed in Japan

CODE NO.	BOOKLET TYPE	13Z1V401
	MICRO-FICHE	13Z1V4EA/FA
PARTS CATALOGUE NEWS	GXV160H2	
NEWS NO.	010	

Block No.	Ref. No.	Note	Part No.	Description	Reqd. QTY	Serial No.	Parts catalogue code
					GXV 160 H2		
E-3	49	T	12126-Z1V-000	PLATE A, GUIDE .....	1	-----	N1, N1F, N4, N5, N6, N6S, SFL, SFL1, SFY1, T1AH
		D	12126-Z1V-800	.....	1	-----	A14, C12, SFC
	50	T	17560-Z1V-000	STAY COMP., TANK .....	1		
	51	T	90013-883-000	BOLT, FLANGE, 6X12 (GT200) ....	1		
E-17	15	T	90010-GE0-710	CLIP, TUBE .....	1	-----	A14, C12, SFC
E-19-1	6	E	43140-ZE7-000	*PARTS NO. DELETION			
		D	43140-Z1V-000	CAM COMP., BRAKE .....	1	-----	A14, C12, SFC

NOTE A:PART NO. CHANGE D:NEWLY PROVIDED E:PART NO. DELETION K:REQUIRED NO. CORRECTION L:APPLICATION SERIAL NO. CORRECTION  
T:APPLICATION CORRECTION Z:REMARKS CHANGE





# PARTS CATALOGUE NEWS

Honda Motor Co., Ltd. Service Division

Printed in Japan

CODE NO.	BOOKLET TYPE	13Z1V401
	MICRO-FICHE	13Z1V4EA/FA
PARTS CATALOGUE NEWS	GXV160H2	
NEWS NO.	011	

## GXV160H2-A1S,A1SA,C14,N15,N45,N5M,N55 AND SFY TYPES sales parts information

NOTE: This Parts Catalogue News explains only the parts of the different model that are produced to conform to addition of the GXV160H2-A1S,A1SA,C14,N15,N45,N5M,N55 and SFY types.

As for the parts not listed on this Parts List News, use the parts of the GXV160H2-A14,N1,N1F and SFY1 types.

NOTE A:PART NO.CHANGE D:NEWLY PROVIDED E:PART NO.DELETION K:REQUIRED NO.CORRECTION L:APPLICATION SERIAL NO.CORRECTION T:APPLICATION CORRECTION Z:REMARKS CHANGE

Model	Type		Parts catalogue type	Applicable engine serial No.	Applicable carburetor identification No.
GXV160H2	A14	Base model	A14	GJAAH-1000001~	BE66J A
	A1S	Additional model	A1S		
	N1F	Base model	N1F		
	A1SA	Additional model	A1SA		
	A14	Base model	A14		
	C14	Additional model	C14		
	N1	Base model	N1		
	N15	Additional model	N15		
	N45		N45		
	N1F	Base model	N1F		
	N5M	Additional model	N5M		BE66M A
	N1	Base model	N1		BE66J A
	N55	Additional model	N55		
	SFY1	Base model	SFY1		
SFY	Additional model	SFY			

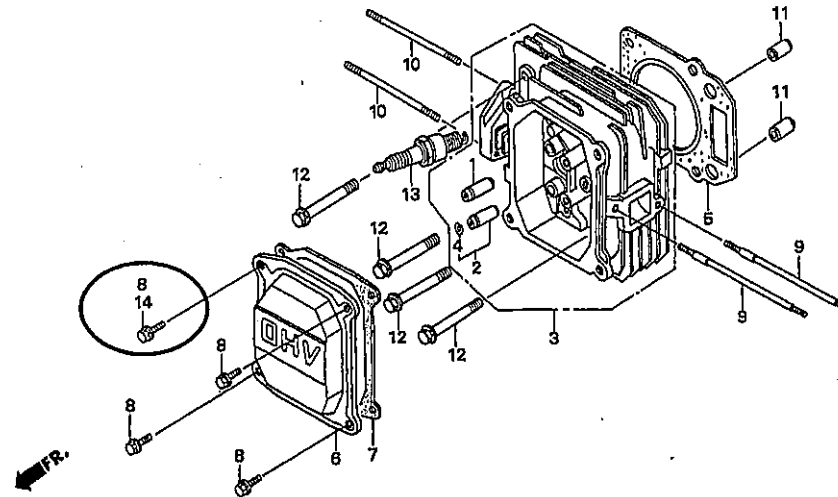
NOTE A:PART NO. CHANGE D:NEWLY PROVIDED E:PART NO. DELETION K:REQUIRED NO. CORRECTION L:APPLICATION SERIAL NO. CORRECTION  
T:APPLICATION CORRECTION Z:REMARKS CHANGE

PARTS CATALOGUE NEWS

BOOKNo. :13Z1V401

Block No.	Ref. No.	Part No.	Description	Reqd. QTY GXV 160 R2	Base Part No.	Parts catalogue code
-----------	----------	----------	-------------	-------------------------------	---------------	----------------------

E-2 CYLINDER HEAD



Z1V0-E0200B

E-2	8	90013-883-000	BOLT, FLANGE, 6X12 (GT200) ....	3	90013-883-000	
	14	90014-952-000	BOLT, FLANGE, 6X14 (GT200) ....	1		
E-3	1	11300-Z1V-U90	PAN ASSY., OIL .....	1	11300-Z1V-000	N5M
		11300-Z1V-V50	.....	1		SFY
	2		PAN ASSY., OIL .....	0	11300-Z1V-800	SFY
	4	12000-Z2J-000	BARREL ASSY., CYLINDER .....	1	12000-Z1V-000	N15, N45, N5M, N55, SFY
	5		PLATE, GUIDE .....	0	12125-Z1V-000	A1SA
	23		SHAFT, DRIVE .....	0	23411-ZE7-000	SFY
	24		GEAR, DRIVEN (18T) .....	0	23421-ZE6-000	SFY
	25	43143-Z1V-000	BASE COMP., HOLDER .....	1		A1SA
	28		BOLT, FLANGE, 6X20 (GT200) ....	0	90022-888-010	A1SA
	31		WASHER, THRUST, 12MM .....	0	90452-166-600	SFY

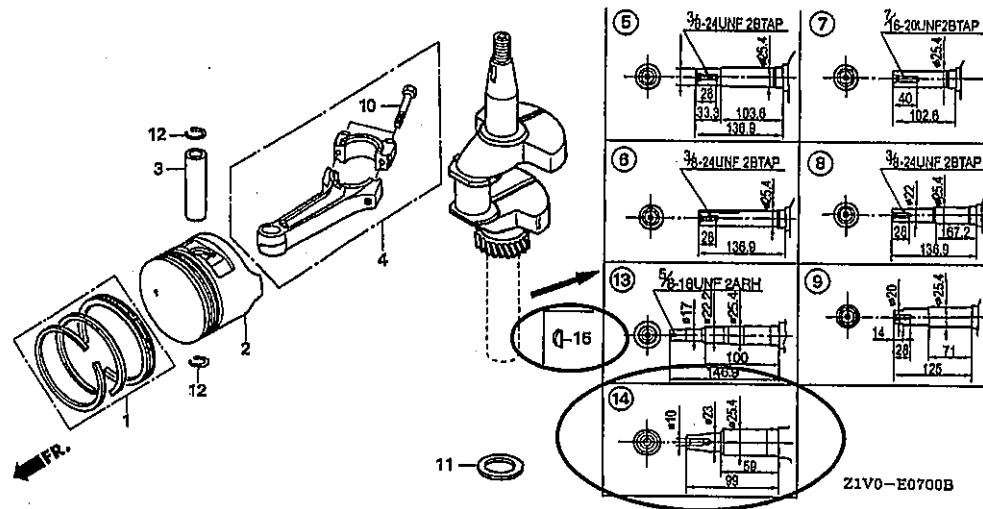
NOTE A:PART NO.CHANGE D:NEWLY PROVIDED E:PART NO.DELETION K:REQUIRED NO.CORRECTION L:APPLICATION SERIAL NO.CORRECTION  
T:APPLICATION CORRECTION Z:REMARKS CHANGE

PARTS CATALOGUE NEWS

BOOKNo. :13Z1V401

Block No.	Ref. No.	Part No.	Description	Reqd. QTY	Base Part No.	Parts catalogue code
				GXV 160 H2		
	32		WASHER, 10X21 .....	0	90452-187-000	SFY
	35		PIN, LOCK, 2.0 .....	0	90701-ZE6-000	SFY
	36		OIL SEAL, 12X20X6.5 .....	0	91205-Z1V-003	SFY
	42	93500-05016-0A	SCREW, PAN, 5X16 .....	1		A1SA
	49	12126-Z1V-800	PLATE A, GUIDE .....	1	12126-Z1V-000	A1SA

E-7 CRANKSHAFT/PISTON



E-7	5		CRANKSHAFT COMP. ....	0	13310-ZE7-010	N45, N5M, N55
	6	13310-ZE7-641	CRANKSHAFT COMP. ....	1		N45
	7	13310-ZE7-661	CRANKSHAFT COMP. ....	1		N55
	14	13310-ZE7-U41	CRANKSHAFT COMP. ....	1		N5M
	15	90741-ZV4-000	KEY, SPECIAL, 16X15 .....	1		A1SA
E-11	1		STARTER ASSY., RECOIL *NH1* ..... BLACK	0	28400-ZE7-003ZB	C14

NOTE A:PART NO. CHANGE D:NEWLY PROVIDED E:PART NO. DELETION K:REQUIRED NO. CORRECTION L:APPLICATION SERIAL NO. CORRECTION  
T:APPLICATION CORRECTION Z:REMARKS CHANGE

## PARTS CATALOGUE NEWS

BOOKNo. :13Z1V401

Block No.	Ref. No.	Part No.	Description	Reqd. QTY 0XV 160 H2	Base Part No.	Parts catalogue code
		28400-Z1V-J51ZA	STARTER ASSY., RECOIL (LONG, HEPE)		28400-ZE7-V11ZB	
			*R280*.....POWER RED	1		A1SA, N5M
		28400-Z1V-J51ZA	*R280*.....POWER RED	1	28400-ZE7-003ZB	A1S
		28400-Z1V-J51ZA	*R280*.....POWER RED	1	28400-ZE7-003ZC	N15, N45, N55
		28400-Z1V-J51ZB	STARTER ASSY., RECOIL (LONG)			
			*NH1*.....BLACK	1		N15, N45, N55
		28400-Z1V-J51ZB	*NH1*.....BLACK	1	28400-ZE7-V11ZC	A1SA, N5M
		28400-Z1V-J51ZB	*NH1*.....BLACK	1	28400-ZE7-003ZC	A1S
	2		CASE COMP., RECOIL STARTER		28410-ZE7-003ZB	
			*NH1*.....BLACK	0		C14
		28410-ZE7-003ZB	*NH1*.....BLACK	1		N15, N45, N55
	9	28461-ZE7-T00	GRIP, STARTER .....	1	28461-ZE1-003	A1S, A1SA, N5M
	10	28462-ZE7-V11	ROPE, RECOIL STARTER .....	1	28462-ZA7-003	A1S, N15, N45, N55
E-12	1		COVER COMP., FAN		19610-Z1V-000ZB	
			*NH1*.....BLACK	0		C14
		19610-Z1V-000ZB	*NH1*.....BLACK	1		N15, N45, N55
E-14	9	16100-Z1V-J71	CARBURETOR ASSY. (BE66M A) ...	1	16100-Z1V-003	N5M
	11	16166-Z1V-J71	NOZZLE, MAIN .....	1	16166-Z1V-003	N5M
	21	99101-ZH8-0650	JET, MAIN, #65 .....	(1)	99101-ZH8-0600	N5M
		99101-ZH8-0680	JET, MAIN, #68 .....	1	99101-ZH8-0650	N5M
E-16	2	18292-ZE7-M10	PACKING, PROTECTOR .....	2		N15, N45, N55, SFY
E-17	2	16952-Z1V-000	STRAINER, FUEL .....	1	16952-ZA8-800	
E-19	1		KEY, SPECIAL WOODRUFF, 25X18 .	0	13331-357-000	A1SA
	2		FAN, COOLING .....	0	19511-Z1T-000	A1SA
	3		PULLEY COMP., STARTER .....	0	28451-ZE7-003	A1SA
	4		FLYWHEEL COMP. ....	0	31110-Z1V-003	A1SA

NOTE A:PART NO.CHANGE D:NEWLY PROVIDED E:PART NO.DELETION K:REQUIRED NO.CORRECTION L:APPLICATION SERIAL NO.CORRECTION  
T:APPLICATION CORRECTION Z:REMARKS CHANGE

## PARTS CATALOGUE NEWS

BOOKNo. :13Z1V401

Block No.	Ref. No.	Part No.	Description	Reqd. QTY	Base Part No.	Parts catalogue code
				GVV 160 H2		
	6		NUT, SPECIAL, 14MM .....	0	90201-Z1T-000	A1SA
E-19-1	1	13331-357-000	KEY, SPECIAL WOODRUFF, 25X18 .	1		A1SA
	2	28451-ZE7-003	PULLEY COMP., STARTER .....	1		A1SA
	3	31110-Z1V-810	FLYWHEEL COMP. (BRAKE) .....	1		A1SA
	4	35120-Z1V-811	SWITCH ASSY., ENGINE STOP (BRAKE)	1		A1SA
	5	36121-ZE6-000	SPRING, SWITCH CONTROL .....	1		A1SA
	6	43140-Z1V-000	CAM COMP., BRAKE .....	1		A1SA
	7	43145-ZE7-003	ROD, THROTTLE RETURN .....	1		A1SA
	8	75112-ZE6-000	SPRING, BRAKE .....	1		A1SA
	9	75113-ZE6-000	SPRING, BRAKE RETURN .....	1		A1SA
	10	75120-ZE6-013	BRAKE COMP. ....	1		A1SA
	11	75130-ZE7-000	BASE COMP., BRAKE .....	1		A1SA
	12	90015-ZE6-000	BOLT, FLANGE, 6MM .....	1		A1SA
	13	90018-ZE1-000	BOLT, FLANGE, 6X23 (GT200) ....	2		A1SA
	14	90201-Z1T-000	NUT, SPECIAL, 14MM .....	1		A1SA
	15	30701-883-000	CLIP, HIGH TENSION CORD (8MM)	1		A1SA
	16	90653-723-000	E-RING, 10MM .....	1		A1SA
	17	90702-ZE6-000	DOWEL PIN, 8X9 .....	2		A1SA
	18	93500-04008-0A	SCREW, PAN, 4X8 .....	1		A1SA
	19	94102-12800	WASHER, PLAIN, 12MM .....	1		A1SA
E-22	2		ARM, GOVERNOR .....	0	16551-ZE7-000	N15, N45, N55
		16551-ZE7-000	.....	1		N5M
	3		ROD, GOVERNOR .....	0	16555-ZE7-000	N15, N45, N55
		16555-ZE7-000	.....	1		N5M

NOTE A:PART NO. CHANGE D:NEWLY PROVIDED E:PART NO. DELETION K:REQUIRED NO. CORRECTION L:APPLICATION SERIAL NO. CORRECTION  
T:APPLICATION CORRECTION Z:REMARKS CHANGE



## PARTS CATALOGUE NEWS

BOOKNo. : 13Z1V401

Block No.	Ref. No.	Part No.	Description	Reqd. QTY	Base Part No.	Parts catalogue code
				6XV 160 H2		
	4		SPRING, GOVERNOR .....	0	16561-ZE7-020	N15, N45, N55
		16561-ZE7-711	.....	1		N5M
	5		SPRING, THROTTLE RETURN .....	0	16562-ZE6-000	N15, N45, N55
		16562-ZE6-000	.....	1		N5M
	6	16570-ZE7-772	CONTROL COMP. ....	1		N5M
	7		CONTROL ASSY. ....	0	16570-ZE7-020	N15, N45, N55
	8		ROD, CHOKE .....	0	16573-ZE7-000	N15, N45, N55
		16573-ZE7-000	.....	1		N5M
	9		SPRING, LEVER .....	0	16576-ZE7-300	N15, N45, N55
		16576-ZE7-300	.....	1		N5M
	10		HOLDER, CABLE .....	0	16576-891-000	N15, N45, N55
		16576-891-000	.....	1		N5M
	11		SPRING, CONTROL ADJUSTING ....	0	16584-883-300	N15, N45, N55
		16584-883-300	.....	2		N5M
	12		PROTECTOR, CONTROL .....	0	16585-ZE7-000	N15, N45, N55
		16585-ZE7-000	.....	1		N5M
	14		SWITCH ASSY., ENGINE STOP ....	0	36100-ZE7-013	N15, N45, N55
		36100-ZE7-013	.....	1		N5M
	15		CORD, STOP SWITCH .....	0	36101-ZE7-020	N15, N45, N55
		36101-ZE7-020	.....	1		N5M
	17		HOLDER, STOP SWITCH CORD .....	0	36103-ZE1-000	N15, N45, N55
		36103-ZE1-000	.....	1		N5M
	18		BOLT, FLANGE, 6X12(CT200) ....	0	90013-883-000	N15, N45, N55
		90013-883-000	.....	2		N5M

NOTE A:PART NO.CHANGE D:NEWLY PROVIDED E:PART NO.DELETION K:REQUIRED NO.CORRECTION L:APPLICATION SERIAL NO.CORRECTION  
T:APPLICATION CORRECTION Z:REMARKS CHANGE

## PARTS CATALOGUE NEWS

BOOKNo. :13Z1V401

Block No.	Ref. No.	Part No.	Description	Reqd. QTY dxv 160 H2	Base Part No.	Parts catalogue code
	19		BOLT, GOVERNOR ARM .....	0	90015-ZE5-010	N15, N45, N55
		90015-ZE5-010	.....	1		N5M
	21		CLIP, WIRE HARNESS .....	0	90659-680-013	N15, N45, N55
		90659-680-013	.....	1		N5M
	22		SCREW, PAN, 4X8 .....	0	93500-04008-0A	N15, N45, N55
		93500-04008-0A	.....	1		N5M
	23		SCREW, PAN, 5X16 .....	0	93500-05016-0A	N15, N45, N55
		93500-05016-0A	.....	1		N5M
	24		SCREW, PAN, 5X20 .....	0	93500-05020-0A	N15, N45, N55
		93500-05020-0A	.....	1		N5M
	25		SCREW, PAN, 5X28 .....	0	93500-05028-0A	N15, N45, N55
		93500-05028-0A	.....	1		N5M
	26		NUT, FLANGE, 6MM .....	0	94050-06000	N15, N45, N55
		94050-06000	.....	1		N5M
	27		BOLT, FLANGE, 6X10 .....	0	95701-06010-00	N15, N45, N55
		95701-06010-00	.....	2		N5M
	28		CLAMP, BRAKE PIPE (GRAY) .....	0	46392-SC2-003	N15, N45, N55
		46392-SC2-003	.....	1		N5M
E-22-1	1		CONTROL ASSY. (EN) (STD.) .....	0	16500-ZE7-W11	A1SA, N5M
		16500-ZE7-W11	.....	1		N15, N45, N55
	2		ARM, GOVERNOR .....	0	16551-ZE7-000	N5M
		16551-ZE7-000	.....	1		N15, N45, N55
	3		ROD, GOVERNOR .....	0	16555-ZE7-000	N5M
		16555-ZE7-000	.....	1		N15, N45, N55

NOTE A:PART NO. CHANGE D:NEWLY PROVIDED E:PART NO. DELETION K:REQUIRED NO. CORRECTION L:APPLICATION SERIAL NO. CORRECTION  
T:APPLICATION CORRECTION Z:REMARKS CHANGE

## PARTS CATALOGUE NEWS

BOOKNo. :13Z1V401

Block No.	Ref. No.	Part No.	Description	Reqd. QTY	Base Part No.	Parts catalogue code
				QTY 160 H2		
	4		SPRING, GOVERNOR .....	0	16561-ZE7-020	N5M
		16561-ZE7-020	.....	1		N15, N45, N55
	5		SPRING, THROTTLE RETURN .....	0	16562-ZE6-000	N5M
		16562-ZE6-000	.....	1		N15, N45, N55
	6		CONTROL COMP. (STD.) .....	0	16570-ZE7-W00	N5M
		16570-ZE7-W00	.....	1		N15, N45, N55
		16570-ZE7-W20	CONTROL COMP. (EN) (BRILL) ....	1	16570-ZE7-W00	A1S, A1SA
	7		ROD, CHOKE .....	0	16573-ZE7-000	N5M
		16573-ZE7-000	.....	1		N15, N45, N55
	8		SPRING, LEVER .....	0	16576-ZE7-300	N5M
		16576-ZE7-300	.....	1		N15, N45, N55
	9		HOLDER, CABLE .....	0	16576-891-000	N5M
		16576-891-000	.....	1		N15, N45, N55
	10		SPRING, CONTROL ADJUSTING ....	0	16584-883-300	N5M
		16584-883-300	.....	2		N15, N45, N55
	11		PROTECTOR, CONTROL .....	0	16585-ZE7-000	C14, N5M
		16585-ZE7-000	.....	1		N15, N45, N55
	12		COLLAR, STOPPER .....	0	16599-ZG1-M10	N5M
		16599-ZG1-M10	.....	1		N15, N45, N55
	13		SWITCH ASSY., ENGINE STOP ....	0	36100-ZE7-013	A1SA, N5M
		36100-ZE7-013	.....	1		N15, N45, N55
	14		CORD, STOP SWITCH .....	0	36101-ZE7-020	A1SA, N5M
		36101-ZE7-020	.....	1		N15, N45, N55
	15	32195-Z1V-810	CORD, STOP SWITCH (BRAKE) ....	1		A1SA

NOTE A:PART NO. CHANGE D:NEWLY PROVIDED E:PART NO. DELETION K:REQUIRED NO. CORRECTION L:APPLICATION SERIAL NO. CORRECTION  
T:APPLICATION CORRECTION Z:REMARKS CHANGE

## PARTS CATALOGUE NEWS

BOOKNo. :13Z1V401

Block No.	Ref. No.	Part No.	Description	Reqd. QTY	Base Part No.	Parts catalogue code
				QTY 160 H2		
	16	36103-ZE1-000	HOLDER, STOP SWITCH CORD .....	1		N15, N45, N55
	17		CLAMP, BRAKE PIPE (GRAY) .....	0	46392-SC2-003	A1SA, N5M
		46392-SC2-003	.....	1		N15, N45, N55
	18		BOLT, FLANGE, 6X12(CT200) .....	0	90013-883-000	N5M
		90013-883-000	.....	2		N15, N45, N55
	19		BOLT, GOVERNOR ARM .....	0	90015-ZE5-010	N5M
		90015-ZE5-010	.....	1		N15, N45, N55
	20		SCREW, RECESSED, 5X28 .....	0	90016-ZE7-W00	N5M
		90016-ZE7-W00	.....	1		N15, N45, N55
	21		CLIP, WIRE HARNESS .....	0	90659-680-013	N5M
		90659-680-013	.....	1		N15, N45, N55
	22		SCREW, PAN, 4X8 .....	0	93500-04008-0A	A1SA, N5M
		93500-04008-0A	.....	1		A1S, C14, N15, N45, N55
	23		SCREW, PAN, 5X16 .....	0	93500-05016-0A	N5M
		93500-05016-0A	.....	1		N15, N45, N55
	24		SCREW, PAN, 5X20 .....	0	93500-05020-0A	N5M
		93500-05020-0A	.....	1		N15, N45, N55
	25		NUT, FLANGE, 6MM .....	0	94050-06000	N5M
		94050-06000	.....	1		N15, N45, N55
	26		BOLT, FLANGE, 6X10 .....	0	95701-06010-00	C14, N5M
		95701-06010-00	.....	2		N15, N45, N55
	27	90505-MCT-000	CLAMP, PIPE .....	1		A1SA
E-28	2		LABEL, E-SPEC (15.5X27.5) .....	0	87135-ZE2-020	A1S, A1SA, N15, N45, N5M, N55, SFY
	4		MARK A, COMBINATION (JAPANESE)	0	87520-Z1V-000	SFY

NOTE A:PART NO. CHANGE D:NEWLY PROVIDED E:PART NO. DELETION K:REQUIRED NO. CORRECTION L:APPLICATION SERIAL NO. CORRECTION  
T:APPLICATION CORRECTION Z:REMARKS CHANGE

## PARTS CATALOGUE NEWS

BOOKNo. : 13Z1V401

Block No.	Ref. No.	Part No.	Description	Reqd. QTY	Base Part No.	Parts catalogue code
				6XV 160 Hz		
	5	87522-Z1V-000	LABEL, CAUTION .....	1		SFY
	6	87522-Z1V-800	LABEL, CAUTION (CHINESE) .....	1		C14
	8		MARK B, COMBINATION (JAPANESE)	0	87526-Z1V-000	SFY
	9		WRENCH, BOX (P21) .....	0	99004-21003	A1S, A1SA
E-40	1		COLLAR, FAN .....	0	19512-883-000	SFY
	2		HOLDER ASSY., BLADE .....	0	72600-VA4-010	SFY
	3		HOLDER COMP., BLADE .....	0	72610-VA4-000	SFY
	4		BUSH, BLADE HOLDER .....	0	72613-VA4-000	SFY
	5		PLATE ASSY., BALL CONTROL ....	0	75090-VA4-030	SFY
	6		BRAKE COMP. ....	0	75100-VA4-010	SFY
	7		RETAINER COMP., BALL .....	0	75110-VA4-000	SFY
	8		DISK, BRAKE .....	0	75120-VA4-010	SFY
	9		DISK, DRIVE .....	0	75130-VA4-000	SFY
	10		SPRING, BRAKE HOLDER .....	0	75132-VA4-000	SFY
	11		BUSH, BRAKE HOLDER .....	0	75133-VA4-000	SFY
	12		PLATE COMP., BALL CONTROL ....	0	75140-VA4-020	SFY
	13		DISK COMP., DRIVEN .....	0	75150-VA3-J01	SFY
	14		SPRING, CLUTCH RETURN (58.0MM)	0	75182-VA3-J00	SFY
	15		SPRING, CLUTCH (36.6MM) .....	0	75183-VA3-J00	SFY
	16		BOLT, FLANGE, 6X14(CT200) ....	0	90014-952-000	SFY
	17		BOLT, SPECIAL, 6MM .....	0	90021-VA4-000	SFY
	18		WASHER, THRUST .....	0	90501-952-010	SFY
	19		BEARING, RADIAL BALL, 6204 ...	0	91102-VA4-013	SFY
	20		BEARING, RADIAL BALL, 60/22 ..	0	91103-VA4-003	SFY

NOTE A:PART NO. CHANGE D:NEWLY PROVIDED E:PART NO. DELETION K:REQUIRED NO. CORRECTION L:APPLICATION SERIAL NO. CORRECTION  
T:APPLICATION CORRECTION Z:REMARKS CHANGE

## PARTS CATALOGUE NEWS

BOOKNo. :13Z1V401

Block No.	Ref. No.	Part No.	Description	Reqd. QTY	Base Part No.	Parts catalogue code
	21		KEY, WOODRUFF, 16X15 .....	0	94401-16150	SFY

NOTE A:PART NO. CHANGE D:NEWLY PROVIDED E:PART NO. DELETION K:REQUIRED NO. CORRECTION L:APPLICATION SERIAL NO. CORRECTION  
T:APPLICATION CORRECTION Z:REMARKS CHANGE



# PARTS CATALOGUE NEWS

Honda Motor Co., Ltd. Service Division

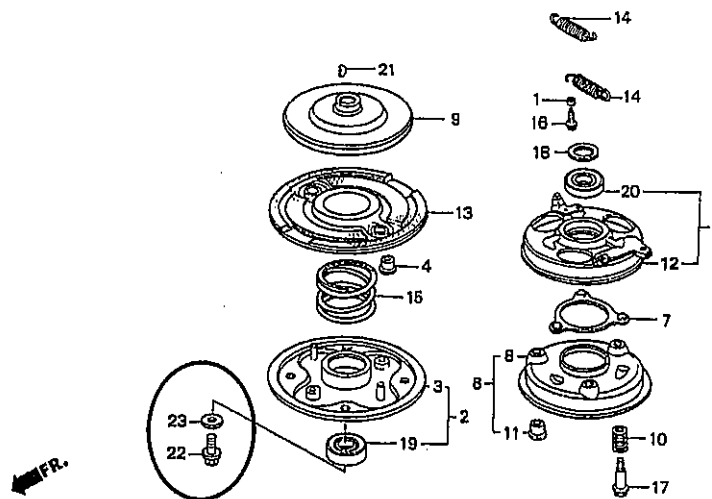
## PARTS CATALOGUE - CORRECTED

Printed in Japan

CODE NO.	BOOKLET TYPE	13Z1V401
	MICRO-FICHE	13Z1V4EA/FA
PARTS CATALOGUE NEWS	GXV160H2	
NEWS NO.	012	

Block No.	Ref. No.	Note	Part No.	Description	Reqd. QTY	Serial No.	Parts catalogue code
					GXV 160 H2		

E-40 BLADE HOLDER



Z1V0-E4000A

E-40	22	D	90105-960-003	BOLT, HEX., 10X25 .....	1	-----	SFLT, SFY1
------	----	---	---------------	-------------------------	---	-------	------------

NOTE A:PART NO. CHANGE D:NEWLY PROVIDED E:PART NO. DELETION K:REQUIRED NO. CORRECTION L:APPLICATION SERIAL NO. CORRECTION  
T:APPLICATION CORRECTION Z:REMARKS CHANGE

PARTS CATALOGUE NEWS

BOOKNo. : 13Z1V401

Block No.	Ref. No.	Note	Part No.	Description	Reqd. QTY	Serial No.	Parts catalogue code
	23	D	90409-952-000	WASHER, TOMM .....	1	-----	SFL1, SFY1

NOTE A:PART NO. CHANGE D:NEWLY PROVIDED E:PART NO. DELETION K:REQUIRED NO. CORRECTION L:APPLICATION SERIAL NO. CORRECTION  
T:APPLICATION CORRECTION Z:REMARKS CHANGE





# PARTS CATALOGUE NEWS

Honda Motor Co., Ltd. Service Division

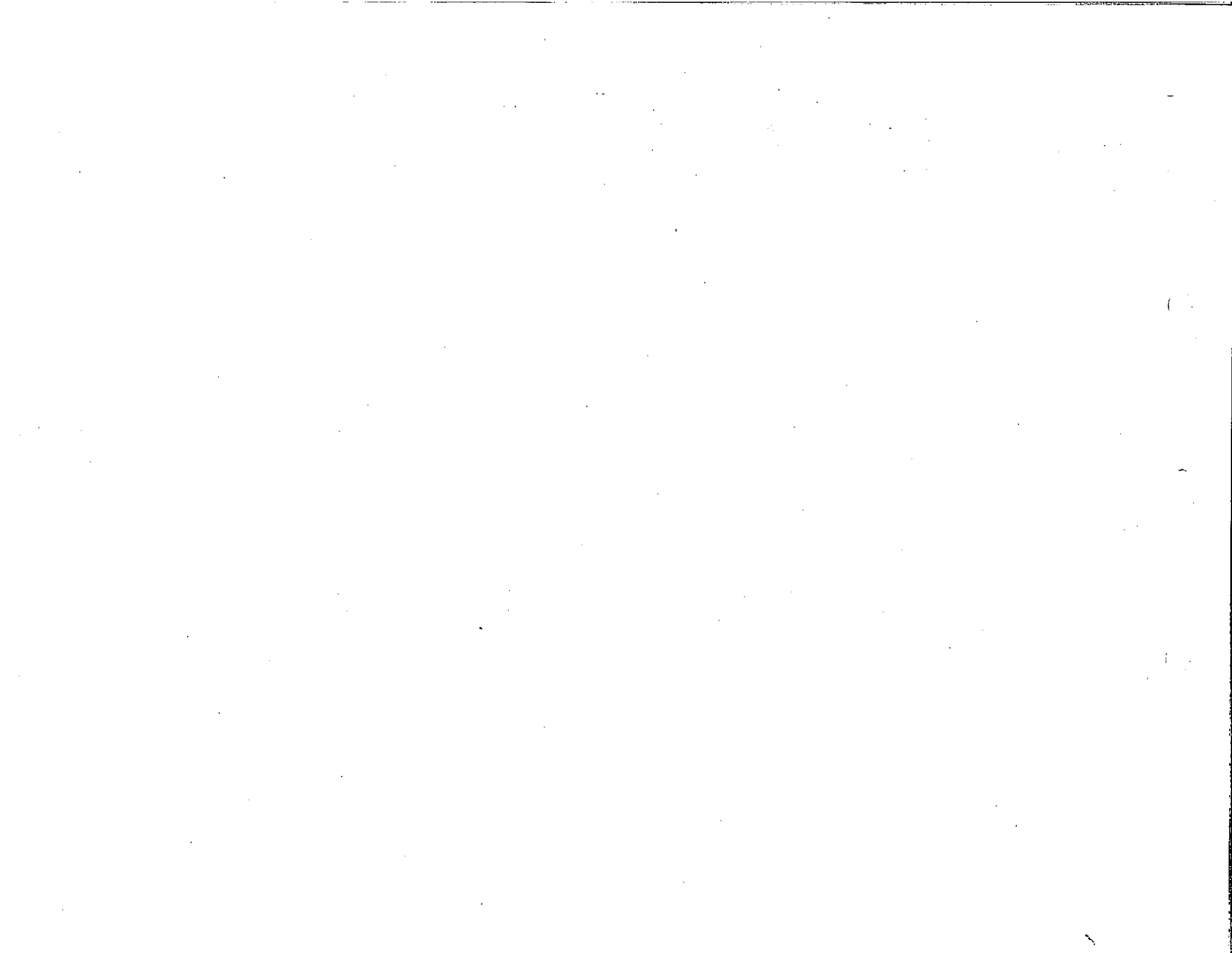
## PARTS CATALOGUE - CORRECTED

Printed in Japan

CODE NO.	BOOKLET TYPE	13Z1V401
	MICRO-FICHE	13Z1V4EA/FA
PARTS CATALOGUE NEWS	GXV160H2	
NEWS NO.	013	

Block No.	Ref. No.	Note	Part No.	Description	Reqd. QTY	Serial No.	Parts catalogue code
					GXV 160 H2		
E-3	22	E	17517-ZE7-000	*PARTS NO. DELETION			
E-22	17	T	36103-ZE1-000	HOLDER, STOP SWITCH CORD .....	1	-----	N1, N4, N5, N5M, N6, SFL, SFL1, SFY, SFY1, T1AH
E-22-1	16	T	36103-ZE1-000	HOLDER, STOP SWITCH CORD .....	1	-----	N1F, N15, N45, N55

NOTE A:PART NO.CHANGE D:NEWLY PROVIDED E:PART NO.DELETION K:REQUIRED NO.CORRECTION L:APPLICATION SERIAL NO.CORRECTION  
T:APPLICATION CORRECTION Z:REMARKS CHANGE





# PARTS CATALOGUE NEWS

Honda Motor Co., Ltd. Service Division

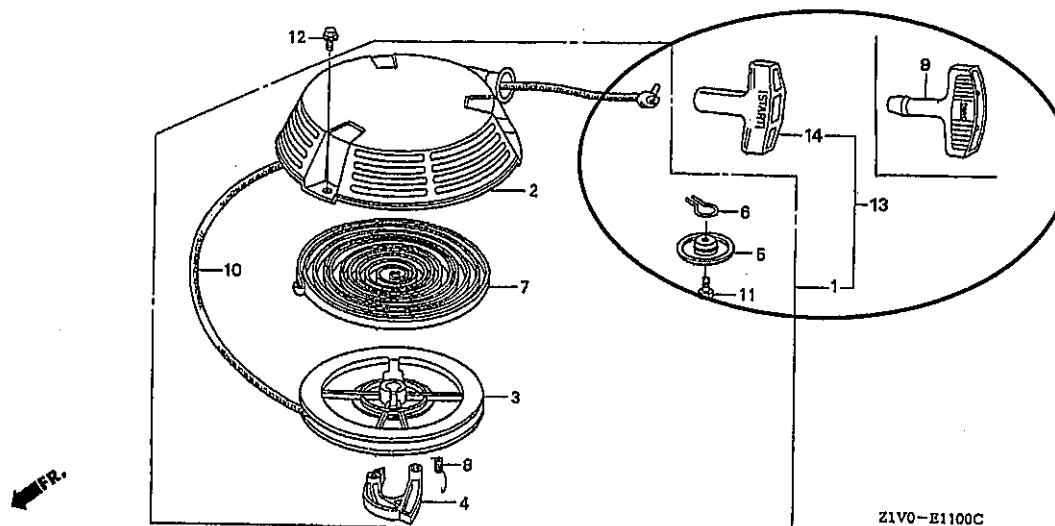
## PARTS CATALOGUE - CORRECTED

Printed in Japan

CODE NO.	BOOKLET TYPE	13Z1V401
	MICRO-FICHE	13Z1V4EA/FA
PARTS CATALOGUE NEWS	GXV160H2	
NEWS NO.	014	

Block No.	Ref. No.	Note	Part No.	Description	Reqd. QTY GXV 160 H2	Serial No.	Parts catalogue code
-----------	----------	------	----------	-------------	-------------------------------	------------	----------------------

E-11 RECOIL STARTER



Z1V0-E1100C

E-11 1 E 28400-ZE7-V112B \*PARTS NO. DELETION

NOTE A:PART NO. CHANGE D:NEWLY PROVIDED E:PART NO. DELETION K:REQUIRED NO. CORRECTION L:APPLICATION SERIAL NO. CORRECTION T:APPLICATION CORRECTION Z:REMARKS CHANGE

Block No.	Ref. No.	Note	Part No.	Description	Reqd. QTY QTY 160 H2	Serial No.	Parts catalogue code
		E	28400-ZE7-V11ZC	*PARTS NO. DELETION			
		E	28400-ZE7-003ZB	*PARTS NO. DELETION			
		E	28400-ZE7-003ZC	*PARTS NO. DELETION			
		T	28400-Z1V-J51ZA	STARTER ASSY., RECOIL (LONG ROPE/HEPE) *R280*.....POWER RED	1	-----	A1S, A1SA, N5M
		T	28400-Z1V-J51ZB	STARTER ASSY., RECOIL (LONG ROPE) *NH1*.....BLACK	1	-----	A1S, A1SA, N5M
	9	E	28461-ZE1-003	*PARTS NO. DELETION			
	13	D	28400-ZE7-V11ZB	STARTER ASSY., RECOIL (LONG ROPE) *NH1*.....BLACK	1	-----	N1F, N15, N45, N55
		D	28400-ZE7-V11ZC	*R280*.....POWER RED	1	-----	N1F, N15, N45, N55
		D	28400-ZE7-003ZB	STARTER ASSY., RECOIL *NH1*.....BLACK	1	-----	A14, SFL1, T1AH
		D	28400-ZE7-003ZC	*R280*.....POWER RED	1	-----	A14, C12, C14, N1, N4, N5, N6, N6S, SFC, SFL, SFL1, SFY, SFY1
	14	D	28461-ZE1-003	KNOB, RECOIL STARTER .....	1	-----	A14, C12, C14, N1, N1F, N15, N4, N45, N5, N55, N6, N6S, SFC, SFL, SFL1, SFY, SFY1, T1AH
E-19-1	5	E	36121-ZE6-000	*PARTS NO. DELETION			
		D	35129-Z1V-811	SPRING, SWITCH CONTROL .....	1	-----	A1S, A1SA, A14, C12, C14, SFC

NOTE A:PART NO. CHANGE D:NEWLY PROVIDED E:PART NO. DELETION K:REQUIRED NO. CORRECTION L:APPLICATION SERIAL NO. CORRECTION  
T:APPLICATION CORRECTION Z:REMARKS CHANGE



# PARTS CATALOGUE NEWS

Honda Motor Co., Ltd. Service Division

## PARTS CATALOGUE - CORRECTED

Printed in Japan

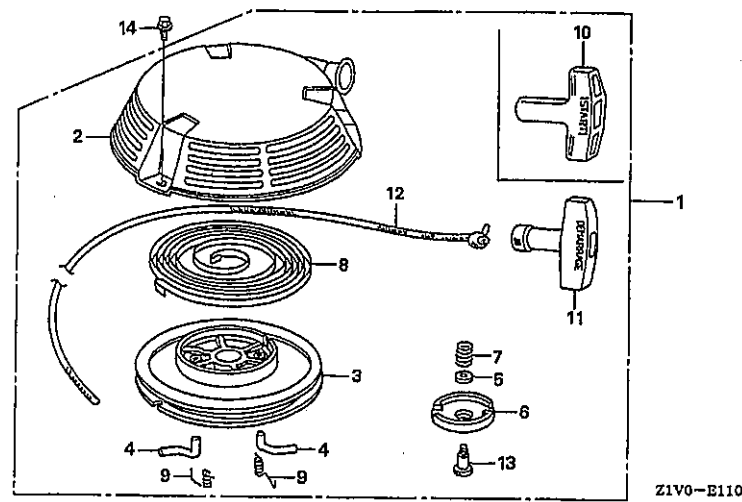
CODE NO.	BOOKLET TYPE	13Z1V401
	MICRO-FICHE	13Z1V4EA/FA
PARTS CATALOGUE NEWS	GXV160H2	
NEWS NO.	015	

Block No.	Ref. No.	Note	Part No.	Description	Reqd. QTY	Serial No.	Parts catalogue code
					GXV 160 H2		

### E-11-1 RECOIL STARTER (2)

Ref. No.	(Relative ref. Number)	F. R. T.
No. LON	Service item	
1	1121B9 STARTER, RECOIL	0.1
4	(9)	
	1121B0 RATCHET, STARTER AND/OR SPRING, RATCHET	0.2
8	1121B7 SPRING, RECOIL STARTER RETURN	0.3
12	1121B3 ROPE, RECOIL STARTER	0.3

FR.



Z1V0-E1101

NOTE A:PART NO.CHANGE D:NEWLY PROVIDED E:PART NO.DELETION K:REQUIRED NO.CORRECTION L:APPLICATION SERIAL NO.CORRECTION T:APPLICATION CORRECTION Z:REMARKS CHANGE

Block No.	Ref. No.	Note	Part No.	Description	Reqd. QTY	Serial No.	Parts catalogue code
					GXY 150 H2		
E-11-1	1	D	28400-Z1V-003ZA	STARTER ASSY., RECOIL *NH1*.....BLACK	1	-----	SFL1, T1AH
		D	28400-Z1V-003ZB	*R280*.....POWER RED	1	-----	C12, C14, N1, N4, N5, N6, N6S, SFC, SFL, SFL1, SFY, SFY1
	D	28400-Z1V-801ZA	STARTER ASSY., RECOIL (LONG ROPE)	1	-----	A1S, A1SA, A14, N1F, N15, N45, N5M, N55	
			*NH1*.....BLACK				
	D	28400-Z1V-801ZB	*R280*.....POWER RED	1	-----	A1S, A1SA, A14, N1F, N15, N45, N5M, N55	
	2	D	28410-Z1V-003ZA	CASE COMP., RECOIL STARTER	1	-----	A1S, A1SA, A14, C12, C14, N1, N1F, N15, N4, N45, N5, N5M, N55, N6, N6S SFC, SFL, SFL1, SFY, SFY1
				*R280*.....POWER RED			
	D	28410-Z1V-003ZB	*NH1*.....BLACK	1	-----	A1S, A1SA, A14, N1F, N15, N45, N5M, N55, SFL1, T1AH	
	3	D	28420-Z1V-003	REEL, RECOIL STARTER (BLACK)	1		
	4	D	28422-ZH8-801	RATCHET, STARTER .....	2		
	5	D	28431-ZH8-801	PLATE, FRICTION .....	1		
	6	D	28433-ZH8-801	GUIDE, RATCHET .....	1		
	7	D	28441-ZH8-801	SPRING, FRICTION .....	1		
	8	D	28442-ZH8-003	SPRING, RECOIL STARTER .....	1		
9	D	28443-ZH8-801	SPRING, RETURN .....	2			
10	D	28461-ZE1-003	KNOB, RECOIL STARTER (FOR LONG ROPE)	1	-----	A1S, A1SA, A14, N1F, N15, N45, N5M, N55	
11	D	28461-ZH8-003	GRIP, STARTER .....	1	-----	C12, C14, N1, N4, N5, N6, N6S, SFC, SFL, SFL1, SFY, SFY1, T1AH	
12	D	28462-ZH8-003	ROPE, RECOIL STARTER .....	1	-----	C12, C14, N1, N4, N5, N6, N6S, SFC, SFL, SFL1, SFY, SFY1, T1AH	
			28462-Z1V-801				ROPE, RECOIL STARTER (LONG) ..
13	D	90003-ZH8-801	SCREW, SETTING .....	1			
14	D	95701-06008-00	BOLT, FLANGE, 6X8 .....	3			

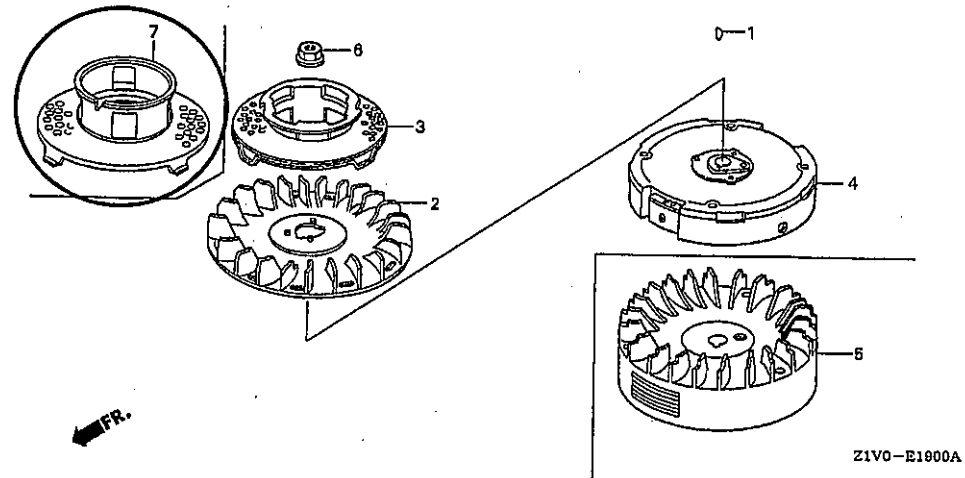
NOTE A:PART NO.CHANGE D:NEWLY PROVIDED E:PART NO.DELETION K:REQUIRED NO.CORRECTION L:APPLICATION SERIAL NO.CORRECTION  
T:APPLICATION CORRECTION Z:REMARKS CHANGE

PARTS CATALOGUE NEWS

BOOKNo. :13Z1V401

Block No.	Ref. No.	Note	Part No.	Description	Reqd. QTY	Serial No.	Parts catalogue code
					GXY 160 HZ		

E-19 FLYWHEEL (1)

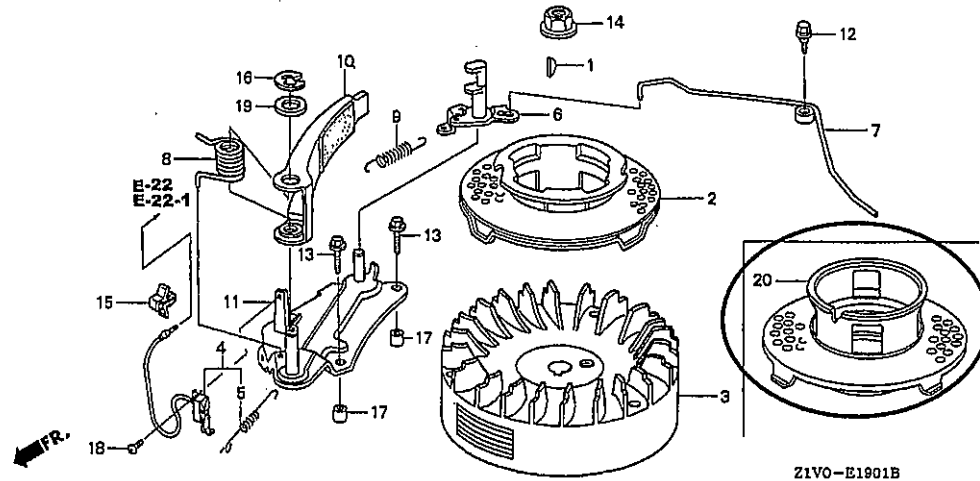


E-19	7	D	28450-Z1V-000	PULLEY COMP., STARTER .....	1	-----	N1, N1F, N15, N4, N45, N5, N5M, N55, N6, N6S, SFL, SFL1, SFY, SFY1, T1AH
------	---	---	---------------	-----------------------------	---	-------	--

NOTE A:PART NO.CHANGE D:NEWLY PROVIDED E:PART NO.DELETION K:REQUIRED NO.CORRECTION L:APPLICATION SERIAL NO.CORRECTION  
T:APPLICATION CORRECTION Z:REMARKS CHANGE

Block No.	Ref. No.	Note	Part No.	Description	Reqd. QTY	Serial No.	Parts catalogue code
					G&V 160 H2		

E-19-1 FLYWHEEL (2)



E-19-1	20	D	28450-Z1V-000	PULLEY COMP., STARTER .....	1	-----	A1S, A1SA, A14, C12, C14, SFC
--------	----	---	---------------	-----------------------------	---	-------	-------------------------------

NOTE A:PART NO.CHANGE D:NEWLY PROVIDED E:PART NO.DELETION K:REQUIRED NO.CORRECTION L:APPLICATION SERIAL NO.CORRECTION  
T:APPLICATION CORRECTION Z:REMARKS CHANGE





# PARTS CATALOGUE NEWS

Honda Motor Co., Ltd. Service Division

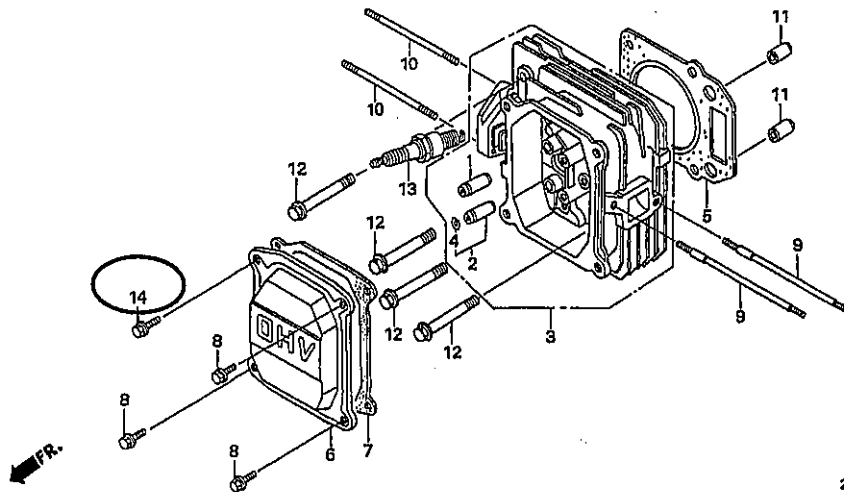
## PARTS CATALOGUE - CORRECTED

Printed in Japan

CODE NO.	BOOKLET TYPE	13Z1V401
	MICRO-FICHE	13Z1V4EA/FA
PARTS CATALOGUE TITLE	GXV160H2	
NEWS NO.	016	

Block No.	Ref. No.	Note	Part No.	Description	Reqd. QTY	Serial No.	Parts catalogue code
					GXV 160 H2		

E-2 CYLINDER HEAD



Z1V0-E0200C

E-2	8	K	90013-883-000	BOLT, FLANGE, 6X12(CT200) . . . .	3		
-----	---	---	---------------	-----------------------------------	---	--	--

NOTE A:PART NO.CHANGE D:NEWLY PROVIDED E:PART NO.DELETION K:REQUIRED NO.CORRECTION L:APPLICATION SERIAL NO.CORRECTION  
T:APPLICATION CORRECTION Z:REMARKS CHANGE

PARTS CATALOGUE NEWS

BOOK No. : 13Z1V401

Block No.	Ref. No.	Note	Part No.	Description	Reqd. QTY	Serial No.	Parts catalogue code
	14	T	90014-952-000	BOLT, FLANGE, 6X14(CT200) .....	1		
E-3	4	T	12000-21V-000	BARREL ASSY., CYLINDER .....	1	-----	A1S, A1SA, A14, C12, C14, SFC
		T	12000-22J-000	.....	1	-----	N1, N1F, N15, N4, N45, N5, N5M, N55, N6, N6S, SFL, SFL1, SFY, SFY1, T1AH
		D	12000-2E7-405	.....	(1)	-----	N1, N1F, N15, N4, N45, N5, N5M, N55, N6, N6S, SFL, SFL1, SFY, SFY1, T1AH
		D	12000-2E7-406	.....	(1)	-----	A1S, A1SA, A14, C12, C14, SFC

NOTE A:PART NO.CHANGE D:NEWLY PROVIDED E:PART NO.DELETION K:REQUIRED NO.CORRECTION L:APPLICATION SERIAL NO.CORRECTION  
T:APPLICATION CORRECTION Z:REMARKS CHANGE