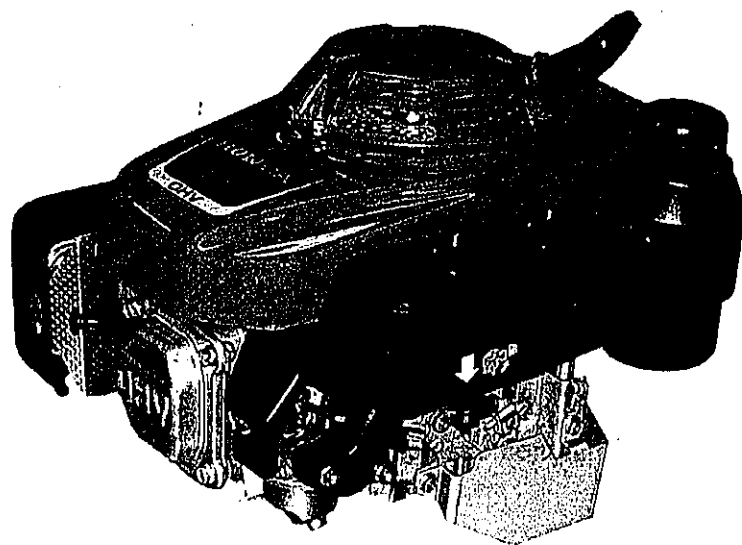


# **GENERAL PURPOSE ENGINE**

**GXV160UH2**

**PARTS CATALOGUE**

**1**



GXV160UH2

---

FOREWORD INDEX

1

---

ENGINE GROUP

2

---

PART NUMBER INDEX

3

---

PART NAME INDEX

4

---

Instruction for use of parts catalogue

- This parts catalogue was prepared based on the latest information available as of July 20, 2005.
- See the parts catalogue news for any revision that is made after July 20, 2005.
- Always specify the part number when ordering a part.
  - Check the model, type, serial numbers, color, maker, and the size as needed before ordering a part.
  - Note that the illustrations (part drawings) can differ from the actual parts in shape. They are given just to help you to refer to the parts.
- When modifications or additions to this parts catalogue are made, a revised edition will be issued at an appropriate time, with successively progressing revision numbers on the cover. We recommend obtaining such revisions in order to keep your parts catalogue up-to-date at all times. To check whether a parts catalogue revision has been issued, please contact your Honda distributor.

Initial version issue date July 20, 2005  
Honda Motor Co., Ltd.

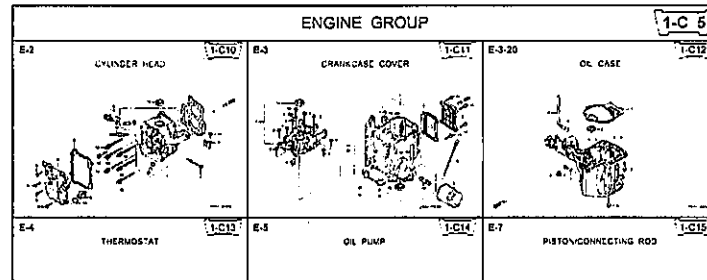
CONTENTS

	Page	Address No.	
● Instruction for use of parts catalogue .....	1	B 1	<b>1</b>
● How to refer to the part information .....	2	B 2	
● Part catalogue structure .....	3	B 3	
● When the parts were revised .....	4	B 4	
● Abbreviations used in the parts catalogue.....	4	B 4	
● How to check the part block and serial numbers.....	5	B 5	
● Models, parts catalogue codes and applicable serial numbers.....	6	B 6	
● Features of each type .....	7	B 7	
● Fuel hose, general purpose hoses and vinyl hose.....	8	B 8	
● FLAT RATE SERVICE TIME.....	9	B 9	
● Illustrated index .....	14	B14	
● ENGINE GROUP.....	16	C 1	<b>2</b>
● PART NO. INDEX.....	39	E 1	<b>3</b>
● PART NAME INDEX.....	41	F 1	<b>4</b>



How to refer to the part information

A Reference with "Illustrated index"



B Reference with "Part number index"

PART NO. INDEX			
Part Number	Address	Page	Ref.
06000			
06316-ZW9-000	1-G9	88	1
11000			
11300-ZW9-405	1-C11	27	1
11300-ZW9-406	1-C11	27	1
11340-ZW9-000	1-C11	27	2
11342-ZW9-000	1-C11	27	3
11381-ZW9-003	1-C12	28	1
12000			
12000-ZW9-405ZA	1-C11	27	4
12155-ZV4-000	1-C13	29	1
12166-ZW9-000	1-C10	26	1
12209-GB4-681	1-C16	32	1
12210-ZW9-405ZA	1-C10	26	2
12216-ZE2-300	1-E8	55	1
	1-E11	58	1
15212-ZW9-000	1-C14	30	
15220-ZW9-003	1-C14	30	
15332-ZW9-000	1-E8	55	
15332-ZW9-A30	1-E11	58	
15400-PFB-004	1-C11	27	
15422-ZW9-000	1-C14	30	
15473-881-000	1-C14	30	
15474-ZW9-000	1-C14	30	
15611-921-000	1-C10	26	
15655-ZW9-000	1-C11	27	
16000			
16010-ZV4-005	1-D4	36	
16011-ZV4-005	1-D4	36	
16013-ZW9-003	1-D4	36	
16016-ZW9-003	1-D4	36	
16016-ZW9-721	1-D4	36	
16023-ZW9-003	1-D4	36	
16024-ZV4-650	1-D4	36	
16028-ZV4-650	1-D4	36	

C Reference with "Part name index"

PART NAME INDEX			
Part name	Address	Page	Ref.
[ A ]			
ABSORBER, FUEL	1-E15	62	5
ARMATURE COMP.	1-D11	43	7
ARM COMP., LINK JOINT	1-G6	85	18
ARM COMP., SHIFT LINK	1-G6	85	14
ARM COMP., TILT	1-F15	79	20
ARM, FUEL PUMP ROCKER	1-C16	32	4
ARM, REVERSE LOCK	1-F15	79	18
ARM, SHIFT LINK	1-F11	74	7
ARM, STOPPER	1-D1	33	12
ARM, THROTTLE REMOTE	1-F11	74	6
ARM, VALVE ROCKER	1-C16	32	3
[ B ]			
BAG, TOOL, 160MM	1-G5	84	10
BAND	1-G6	86	37
BAND B1, WIRE	1-F6	69	1
BAND, CORD	1-E3	67	18
BAND, TUBE CLIP, 11MM	1-E15	63	20
BAND, TUBE CLIP, 12.5MM	1-E15	63	19

Address No. 1-C10

E-2 CYLINDER HEAD

Block No.

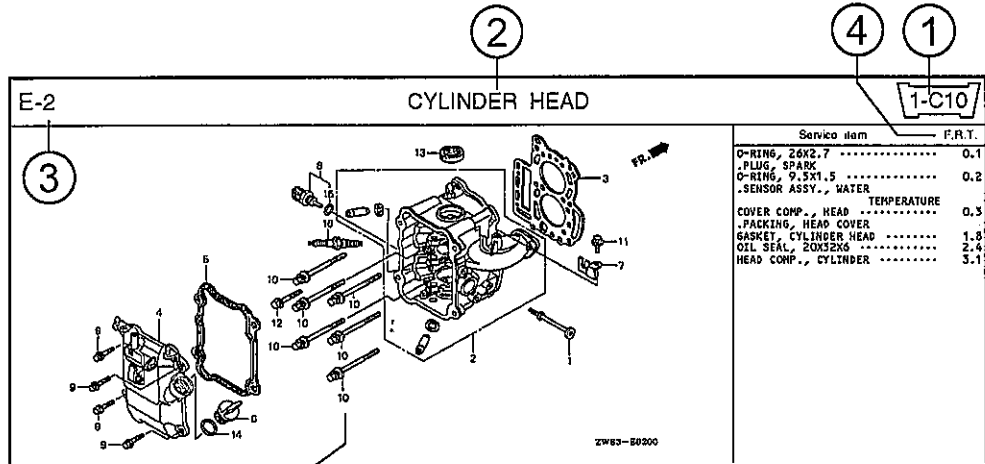
Ref No.

Ref. No.	Part No.	Description	Reqd. QTY						Serial No.	Parts catalogue code
			BF	BP	BF	BP	BF	BP		
1	12166-ZW9-000	STOPPER, ENGINE SIDE	2	2	2	2	2			
2	12210-ZW9-000ZA	HEAD COMP., CYLINDER								
3	12291-ZW9-003	GASKET, CYLINDER HEAD	1	1	1	1	1			
4	12310-ZW9-000	COVER COMP., HEAD	1	1	1	1	1			
5	12312-ZW9-000	PACKING, HEAD COVER	1	1	1	1	1			
6	15611-921-000	CAP, OIL	1	1	1	1	1			
7	16617-ZW9-000	(IND GAUGE)	1	1	1	1	1		SC 56	
	16617-ZW9-010	HOLDER, CABLE	1	1	1	1	1		1001800 LHC, LHD	
			1	1	1	1	1		1001801 LHC, LHD	
8	35673-ZW5-003	SENSOR ASSY., WATER	1	1	1	1	1			
9	90003-ZW9-000	BOLT, FLANGE, 6X22	4	4	4	4	4			
10	90007-ZW9-003	BOLT, FLANGE, 2X83	6	6	6	6	6			
11	90011-ZW9-000	BOLT, FLANGE, 6X14(CT200)	1	1	1	1	1			
12	90020-ZW9-000	BOLT, FLANGE, 8X40	2	2	2	2	2			
13	91202-K19-003	OIL SEAL, 20X32X6	1	1	1	1	1			
14	91301-805-000	O-RING, 26X2.7	1	1	1	1	1			
15	91307-PK2-005	O-RING, 9.5X1.5(HONDA XIKARI)	1	1	1	1	1			
16	98059-55916	PLUG, SPARK (CR5EH-9)	2	2	2	2	2			
	98059-55926	PLUG, SPARK (U16FERP)	2	2	2	2	2			

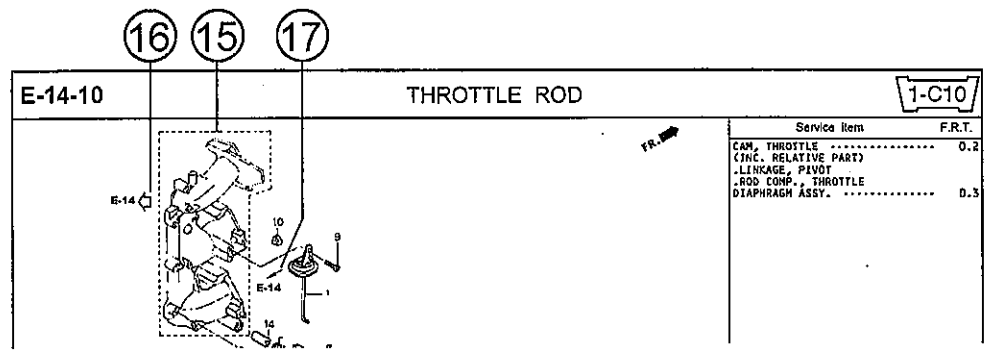
2W43-60300

Page No. 2000.09.20 E

Part catalogue structure



Ref No	Part No.	Description	Reqd. QTY						Serial No.	Parts catalogue code
			BF 9501	BFP 9501	BF 1001	BFP 1001	BF 1001	BFP 1001		
1	12166-ZW9-000	STOPPER, ENGINE SIDE	2	2	2	2	2			
2	12210-ZW9-000ZA	HEAD COMP., CYLINDER								
		*NHS* ..... DARK GRAY	1	1	1	1	1			
3	12251-ZW9-003	GASKET, CYLINDER HEAD	1	1	1	1	1			
4	12310-ZW9-000	COVER COMP., HEAD	1	1	1	1	1			
5	12312-ZW9-000	PACKING, HEAD COVER	1	1	1	1	1			
6	15611-921-000	CAP, OIL (NO GAUGE)	1	1	1	1	1			
7	16617-ZW9-000	HOLDER, CABLE	1	1	1	1	1	SC,SG		
	16617-ZW9-010		1	1	1	1	1	1001800 LHC,LHD		



- ① Address number
  - Address No. is provided (in place of the page No.) to help you refer to the part with the part No. or part name.
- ② Block title
- ③ Block number
- ④ Service item/Flat rate time
- ⑤ Reference number
  - Title number marked with the parenthesis or parentheses indicates that it continues from the previous page.
- ⑥ Part number
- ⑦ Honda color code
- ⑧ Description
- ⑨ Assemblies
  - Sections framed with broken lines in the exploded view drawings are available as complete assemblies. (Their individual parts can also be obtained.)
- ⑩ Color description
- ⑪ Note
  - Notes are shown with the parentheses in the part name column.
- ⑫ Required quantity
  - Required QTY shown in the parenthesis or parentheses indicates the optional part.
  - Required QTY marked with "N" Indicates the optional part that should be selected as needed.
  - Required QTY indicates the number of the part used in the block.
- ⑬ Serial number
- ⑭ Type
  - When the type column is blank, it indicates that the part is applicable to all types.
  - As the type of the actual unit may differ from the "parts catalogue, type" please refer to "Models, types and applicable serial numbers" for confirmation.
- ⑮
  - Parts enclosed within a dotted line are covered in a different block.
- ⑯
  - A hollow arrow indicates the block No. for the parts enclosed within a dotted line .
- ⑰
  - A solid arrow indicates the block No. the part in question is connected to.

When the parts were revised



Be sure to check the serial number!!



Ref. No.	Part No.	Description	Reqd. QTY						Serial No.
			BF	BFP	BF	BFP	BF	BFP	
			9.001	9.901	1001	1001	1001	1001	
1	12166-ZW9-000	STOPPER, ENGINE SIDE	2	2	2	2	2	2	
2	12210-ZW9-000ZA	HEAD COMP., CYLINDER							
		*NHB*							
3	12251-ZW9-003	GASKET, CYLINDER HEAD	1	1	1	1	1	1	
4	12310-ZW9-000	COVER COMP., HEAD	1	1	1	1	1	1	
5	12312-ZW9-000	PACKING, HEAD COVER	1	1	1	1	1	1	
6	15611-921-000	CAP, OIL (NO GAUGE)	1	1	1	1	1	1	
7	16617-ZW9-000	HOLDER, CABLE (###)	1	1	1	1	1	1	
	16617-ZW9-010		1	1	1	1	1	1	

The number has been used from the initial model without revision. When shown at the left side, it is applicable to the models of No.1001801 and the subsequent numbers. When shown at the right side, it is applicable to the models up to No.1001800.

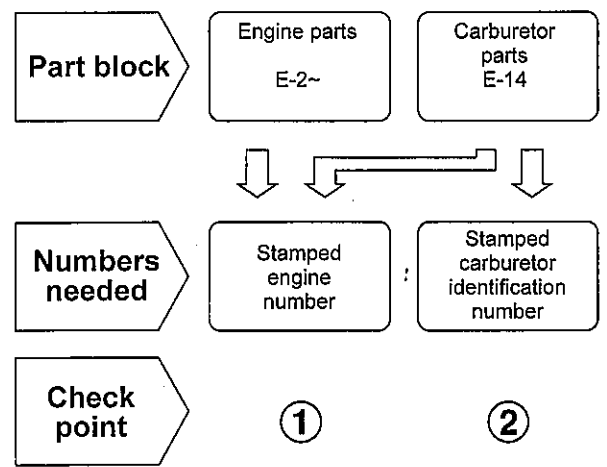
The parts listed with "###" at the end of the parts name have limited supply period (parts not for sale).

Abbreviations used in the parts catalogue

The following abbreviations are used in the parts name column.

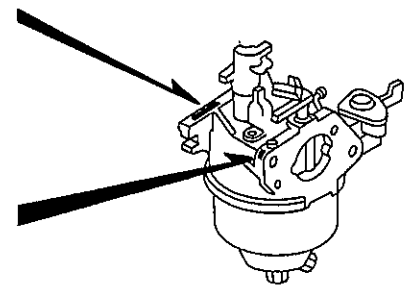
- A ..... Ampere
- A.C. .... Alternating current
- ASSY. .... Assembly
- AT. .... Automatic transmission
- C.D.I. .... Capacitive discharge ignition
- COMP. ... Complete
- D.C. .... Direct current
- EX. .... Exhaust
- G.F.C.I. ... Ground fault circuit interruptor
- HEX. .... Hexagonal
- H.S.T. .... Hydrostatic transmission
- FR. ....Front
- IN. ....Inlet
- L (100L) .Link (100 Links)
- L. ....Left
- MM .....Millimeter
- MT. ....Manual Transmission
- P.T.O. ....Power take off
- R. ....Right
- RR. ....Rear
- STD. ....Standard
- T (22T) ...Tooth (22 Teeth)
- V .....Volt
- W .....Watt

How to check the part block and serial numbers



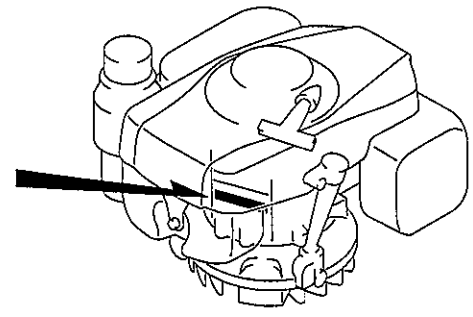
②-B  
CARBURETOR  
IDENTIFICATION NUMBER

②-A  
CARBURETOR  
IDENTIFICATION NUMBER



DZ1V-B

①  
TYPE  
ENGINE SERIAL NUMBER



DZ1V-A



Models, parts catalogue codes and applicable serial numbers

- Models, parts catalogue codes and applicable serial Nos. given in this parts catalogue can be identified as follows.

Model	Type	Parts catalogue type	Applicable engine serial No.	Applicable carburetor identification No.
GXV160UH2	A1S	A1S	GJABH-1000001~	BE66J A
	A1SA	A1SA		
	A14	A14		
	N1	N1		
	N1F	N1F		
	N15	N15		
	N4	N4		
	N45	N45		
	N5M	N5M		
	N55	N55		BE66J A
	SFL	SFL		
	SFL1	SFL1		
	SFY	SFY		
	SFY1	SFY1		
T1AH	T1AH			

\* Of carburetor identification numbers, only the portions underlined in the example below are used for registration.

BE 66J A KC †  
 (A) (B)



Features of each type

• See the following table for the features of each type. (Items in brackets are optional)

Specifications		Model	GXV160UH2														
		Type	A1S	A1SA	A14	N1	N1F	N15	N4	N45	N5M	N55	SFL	SFL1	SFY	SFY1	T1AH
Crankshaft	22.2mmØ Straight		•	•	•	•	•	•									
	25.4mmØ Straight (Flat key-way)								•	•							
	25.4mmØ Straight											•					
	20mmØ Steped thread												•	•	•	•	
	5/8" Stepped thread																•
	M8 Tapered											•					
Flywheel brake			•	•	•												

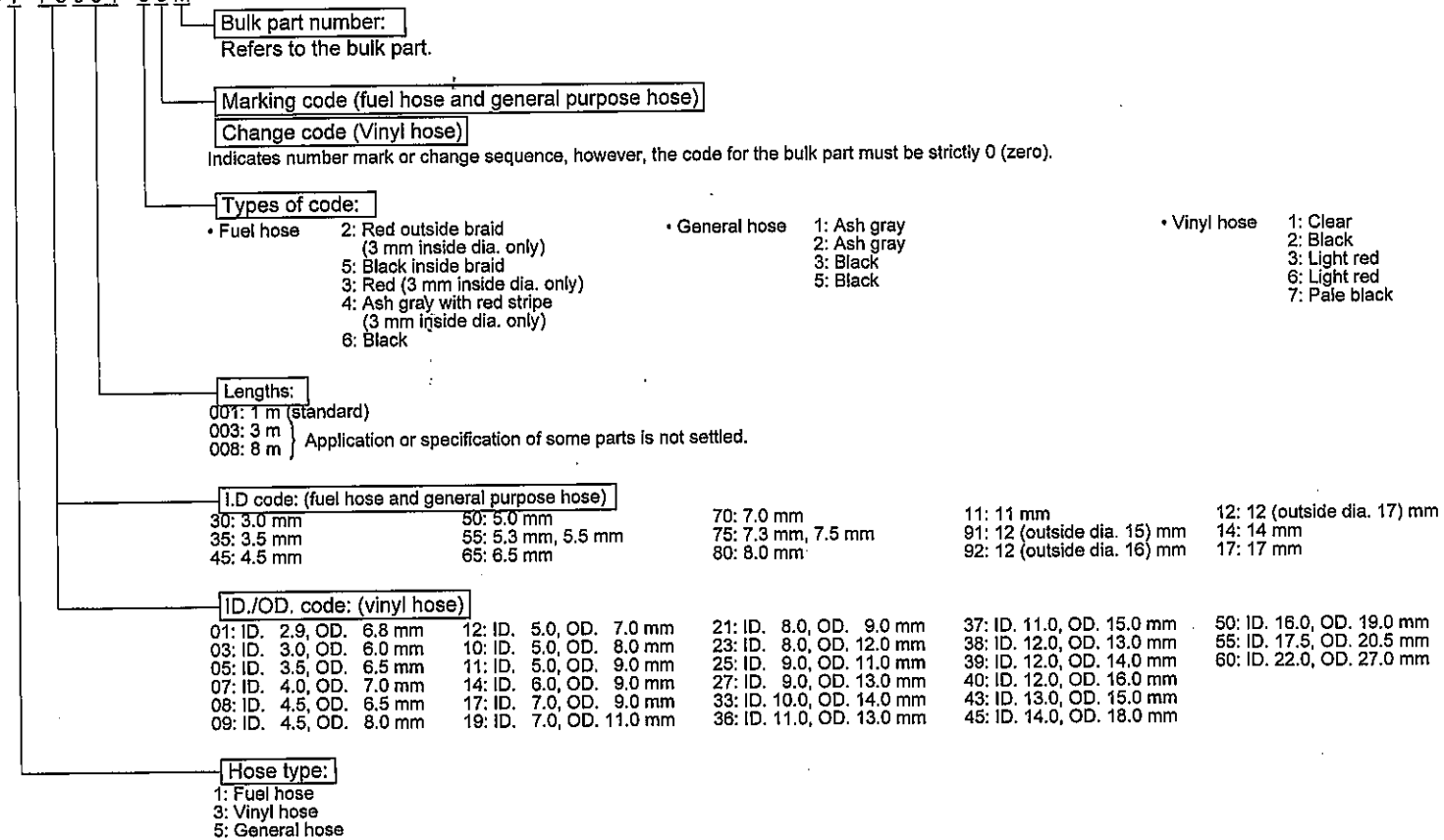


## Fuel hose, general purpose hoses and vinyl hose

- The standard part fuel hose, general purpose hose and vinyl hose may be substituted by the coiled bulk part.
- When ordering the standard part fuel hose, general purpose hose and vinyl hose use the bulk part number written in the parts catalog in brackets ( ) underneath the part name.
- When exchanging the hose, cut and use at the specified length as mentioned in the part name.  
(For the method of cutting the bulk part, and method of filling out orders etc., please refer to the instructions issued with the bulk part.)

### Bulk part number of fuel hose, general purpose hose and vinyl hose.

Example: 9 5 0 0 1 - 7 5 0 0 1 - 5 0 M

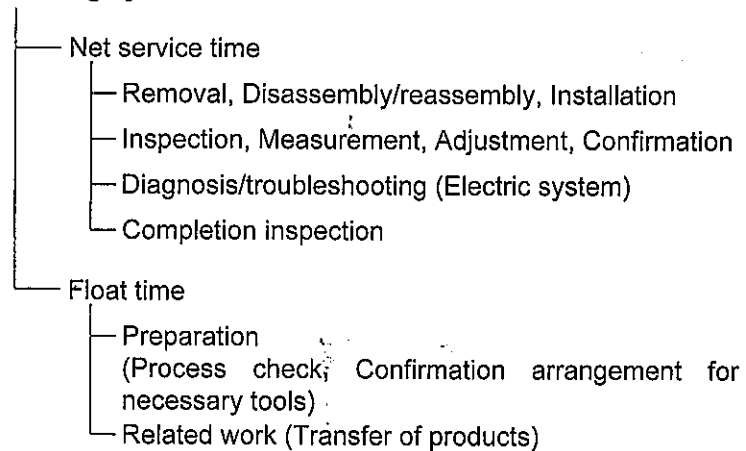


© **CAUTION:** It is **DANGEROUS** to confuse the fuel hose with the general purpose hose or vinyl hose.  
Never use a general purpose hose or vinyl hose in place of a fuel hose or vice versa. Always use the correct bulk part in the parts catalogue, according to the service manual or the instructions issued with the bulk part.

## FLAT RATE SERVICE TIME

Flat rate service time (FRT) means the standard time required to service a product, which is listed in this manual to help the dealers control the actual working process and calculate the service charge by using it as a guide.

### FRT setting system



\* Float time is set by multiplying the net service time by a given coefficient.

### Editorial style

The service items shown in the text are listed with the exchange work time for the repair sales parts as the subject. Other representative service items not using repair parts (removal/installation, adjustment, inspection/measuring, and other work) are listed collectively in the list in the preface, classified according to the work.

### FRT setting standard

- Decimal system (in unit of 0.1) is adopted to set FRT as it is convenient to calculate the wage.  
Example: (0.1) → 6 minutes, (0.2) → 12 minutes  
[Labor cost per hour] x [FRT] = [Wage]
- FRT is set with a hand tool.
- Service items and FRT can be subject to change depending on development of tools and service equipment and improvement in service procedure.

**Work procedure**

- As the work procedure is set with the work time according to the method in the separate Service Manual, refer to this Manual as required.
- Work methods permitting servicing in the shortest time still permitting assurance of safe work and product warranty are used for the setting of service items not listed in the Service Manual.
- Work basically is to be performed by one person, and when two or more people are required, setting is done as the total time for the number of people.
- The set value for the technological level of the workers uses a person with three years of experience in the repair of Honda products as the standard.
- Special tools and service equipment used to set FRT are those specified or recommended in Service Manual.

**Service item whose FRT is not presented**

- Accessories and service parts that are not listed to use in this manual.
  - Locations with little aging deterioration or breakage during normal use.
  - Service work that can be finished by one touch.
  - Service work that is seldom done (i.e. extremely small causes of trouble and service frequency).
  - Products and parts whose location for installation differs according to its status of use and application.
- \* When FRT is not presented, please calculate wages based on appropriate actual work time.

**Operation not included of FRT**

- Oil and coolant water drainig, Waiting time for warming up operation and etc..
- Additional operation that involves removal/installation of standard exterior equipment.
- Indirect time spent for service by visiting the customer, trade-in, and delivery.
- Indirect time required for ordering and delivery of parts.
- Cost for grease, adhesive agent, etc. used for service work.

**Explanation of FRT by using an example**  
 (The example may differ from the actual presented items)

Ref. No.	L.O.N.	(Relative ref. Number) Description	F.R.T.
①	1111L1	(1, 3, 4, 7) VALVE, INTAKE .....4.1	②
③	1111L1A	• NOTE: OHV type • Includes: Engine removal and installation One head (intake all) add .....1.4	⑤

- ① Reference No. of the illustration of part that shows location of the replacement work.
- ② FRT is an abbreviation of Flat Rate Time indicating the standard service time required for the replacement.
- ③ LON is an abbreviation of Labor Operation Number, and it is a classification of the service items by the work unit code.

The same operation code is used regardless of the models.

Standard operation is indicated with 6 digits code, and additional operation is indicated with 7 digits code.

- ④ Indicating the intake valve replacement and FRT4.1.
- ⑤ Indicating FRT1.4 that will be added when additional operation (whole intake side of one cylinder head) is done in association with intake valve replacement.

- ⑥ Indicating work condition or application condition of the service item.
- ⑦ Indicating work contents that are included in the service item.
- ⑧ Indicating a reference No. whose operation and time are the same as FRT4.1 for the intake valve.

(The application range is limited to the service items without an LON setting within a same block.)

**How to refer to the service item by using the sample**  
 (intake valve replacement)

Open to the page of the block where the intake valve's spare part illustration is shown.



Look for the intake valve illustration, and refer to the service item and FRT that agree with the reference No.

Indication mark for the listing of service items that continues to the following page

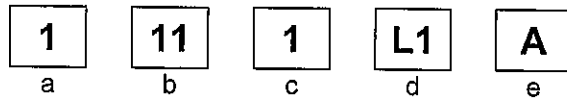
Ref. No.	L.O.N.	(Relative ref. Number) Description	F.R.T.
2	1111L1	VALVE, INTAKE .....	4.1
	.	.	.
	.	.	.

†  
Mark indicated at the last line.

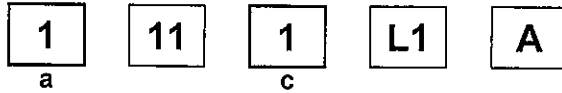
Indication of the block with no setting of FRT

Ref. No.	L.O.N.	(Relative ref. Number) Description	F.R.T.
NO INFORMATION .....			

• LON code system



- a) Category code..... Engine
- b) Location/function code..... Engine upper
- c) Operation code..... Replace
- d) Operation sequence number (Unit code can be shown with alphabet)  
..... Intake valve  
(No regular rule of code)
- e) Additional code ..... One head (intake all)  
(No regular rule of code)



a) Category codes and classification

Code	Category
1	Engine
2	Power drive
3	Fuel & Exhaust
4	Frame & Body
5	Steering
6	Electrical
7	Axle & Brake
8	Control system
9	-
0	Attachments

c) Operation codes and classification

Code	Operation category
1	Replace, Removal/Installation, Change
2	Overhaul
3	Adjust, Rotation
4	(Paint-related work: Top-coat)
5	Test, Inspect/diagnose, Measurement
6	(Overhaul-related work: Rebore)
7	(Overhaul-related work: Reseal)
8	(Resurface)
9	(Paint-related work: Refinish)
0	Repair, Cleaning, Air bleeding

Major service items without using spare parts  
 (1) Removal/Installation, (2) Adjustment, (3) Inspection/  
 Measurement, (4) Overhaul, (5) Other work

E: Engine, T: Transmission, D: Drive system, B: Body and related  
 parts

#### (1) Removal/Installation

Set with the parts configuration in the status of being removed from  
 the product.

	LON	DESCRIPTION	FRT
E	1111L3	CYLINDER HEAD ASSEMBLY- REMOVAL/INSTALLATION	0.6

#### (2) Adjustment

	LON	DESCRIPTION	FRT
E	1113A1	VALVE CLEARANCE-ADJUSTMENT NOTE: For 1 product	0.4
	1163A0	CONTROL, THROTTLE/GOVERNOR- ADJUSTMENT	0.2
	3113A2	CARBURETOR IDLE-ADJUSTMENT	0.1

#### (3) Inspection, Measurement, Cleaning

	LON	DESCRIPTION	FRT
E	1105A0	ENGINE OIL-INSPECTION	0.1
	3120A0	AIR CLEANER-CLEANING INCLUDES: Air cleaner-inspection	0.2
	3130A0	SPARK ARRESTER-CLEANING	0.2
	6140A0	SPARK PLUG-ADJUSTMENT/CLEANING NOTE: For 1 product	0.1

#### (4) Overhaul

Work condition: The required Measurements, inspections,  
 adjustments, and cleaning/washing of each part are performed,  
 including the main body removal/installation work and the  
 replacement of defective parts.

	LON	DESCRIPTION	FRT
E	3112A0	CARBURETOR-OVERHAUL INCLUDES: All necessary adjustment	0.6

#### (5) Other work

	LON	DESCRIPTION	FRT
E	1101E1	ENGINE OIL-CHANGE INCLUDES: Engine oil-inspection	0.1

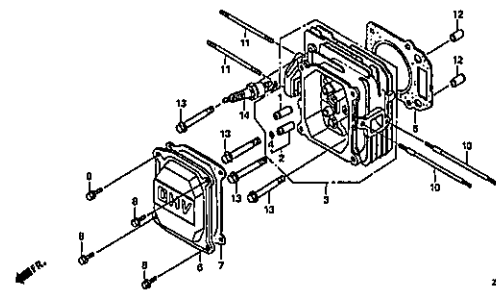
# ENGINE GROUP

**B14**

E-2

CYLINDER HEAD

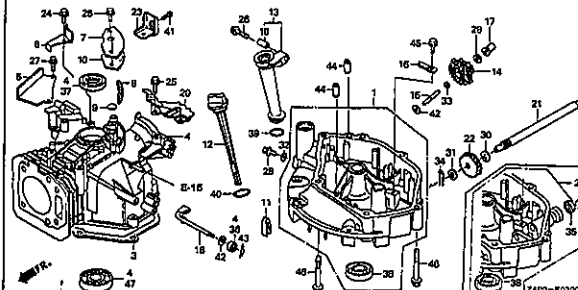
C 1



E-3

CYLINDER BARREL

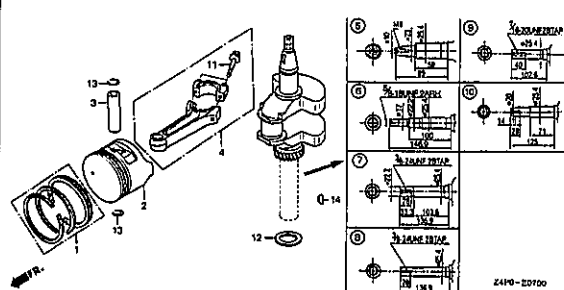
C 2



E-7

CRANKSHAFT/PISTON

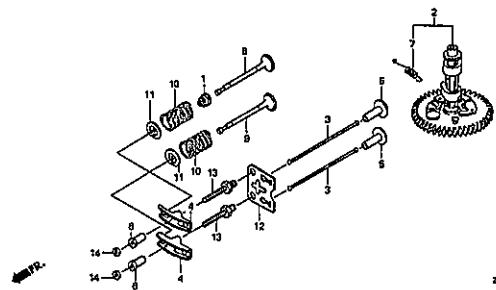
C 5



E-9

CAMSHAFT

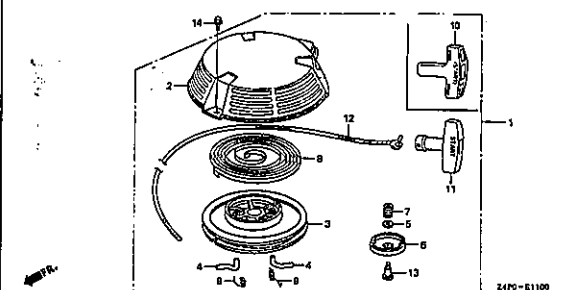
C 7



E-11

RECOIL STARTER

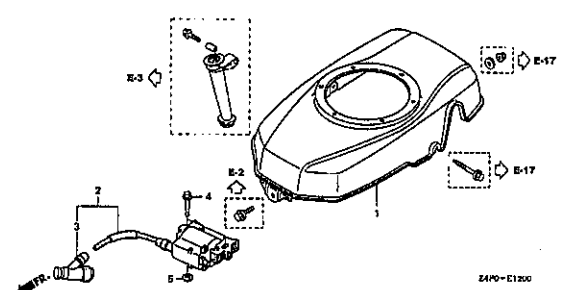
C10



E-12

FAN COVER

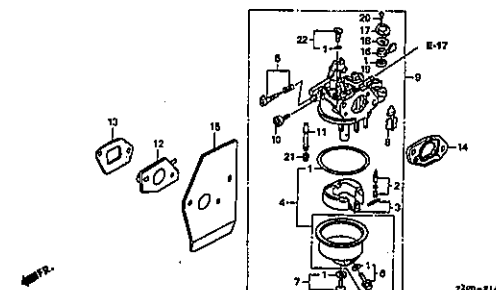
C11



E-14

CARBURETOR

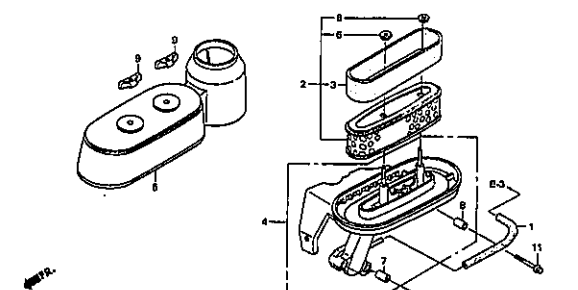
C12



E-15

AIR CLEANER

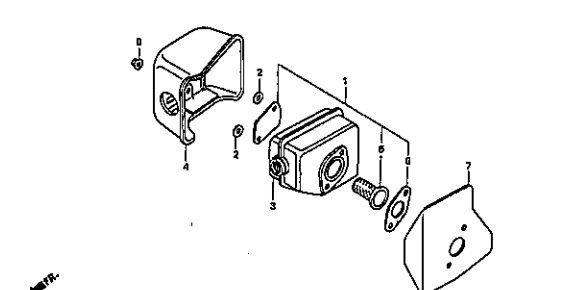
C14



E-16

MUFFLER

C15





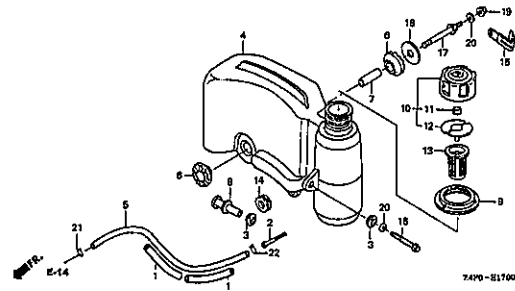
# ENGINE GROUP

**B15**

E-17

FUEL TANK

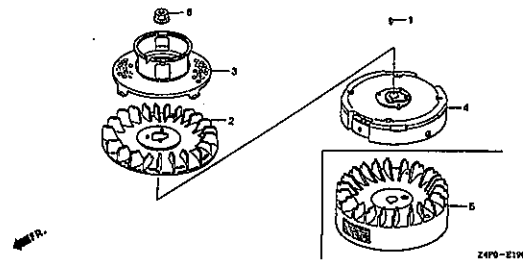
**C16**



E-19

FLYWHEEL(1)

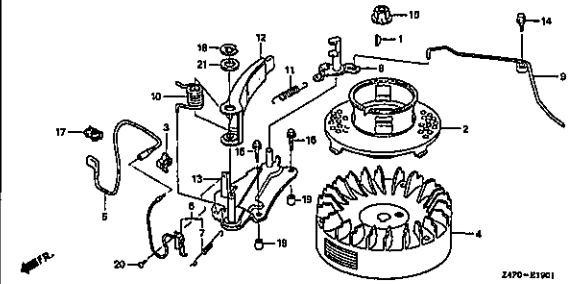
**D 1**



E-19-1

FLYWHEEL(2)

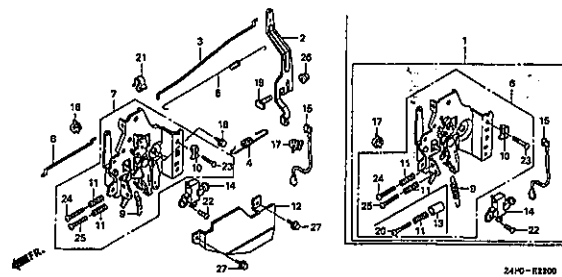
**D 2**



E-22

CONTROL(1)

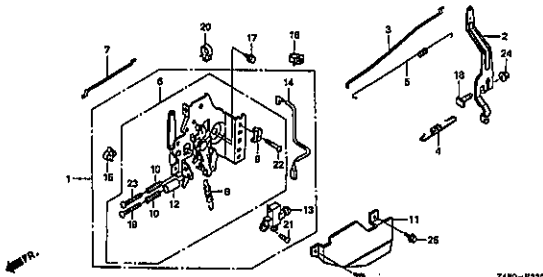
**D 3**



E-22-1

CONTROL(2)

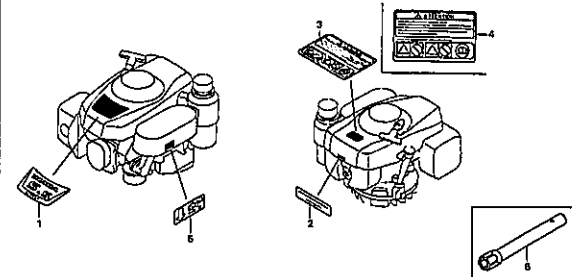
**D 5**



E-28

LABEL/TOOL

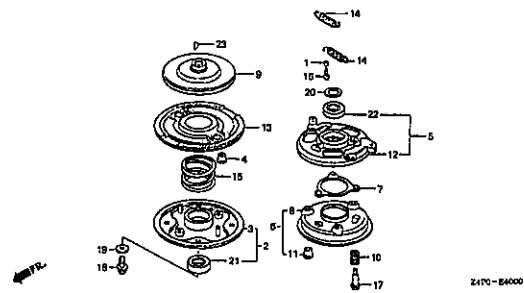
**D 6**



E-40

BLADE HOLDER

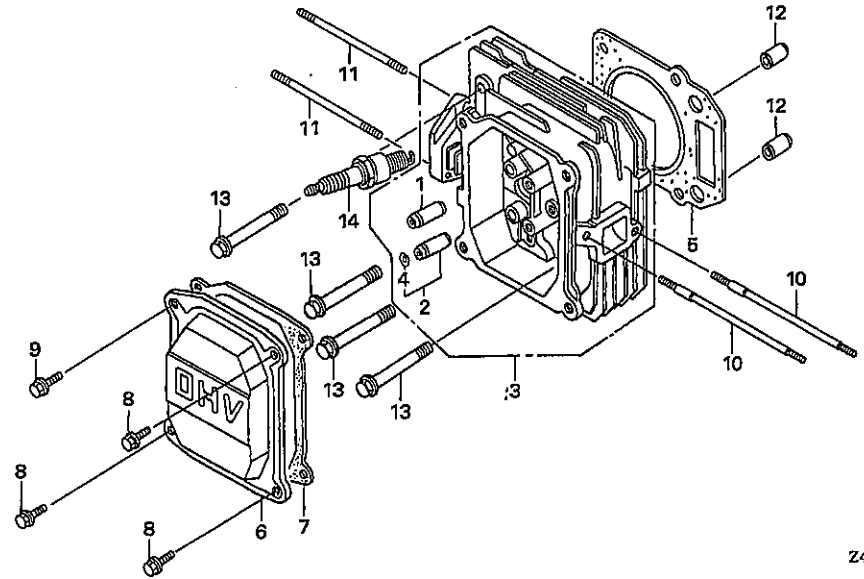
**D 7**



E-2

CYLINDER HEAD

C 1



Ref. No.	L.O.N.	(Relative ref. Number) Description	F.R.T.
1	1111E9	GUIDE, INTAKE VALVE ..... .INCLUDES: Valve clearance adjustment	0.8
	1111E9E	.Replace intake and exhaust all add .....	0.2
2	1111E8	GUIDE, EXHAUST VALVE ..... .INCLUDES: Valve clearance adjustment	0.8
	1111E8E	.Replace intake and exhaust all add .....	0.2
3	1111N3	HEAD, CYLINDER ..... .INCLUDES: Valve clearance adjustment and reface	1.0
5	1111N4	GASKET, CYLINDER HEAD .....	0.6
6	1111D5	COVER, CYLINDER HEAD AND/OR PACKING, HEAD COVER .....	0.1
14	6141C1	PLUG, SPARK ..... .INCLUDES: Spark plug check	0.1

Z4PO-E0200

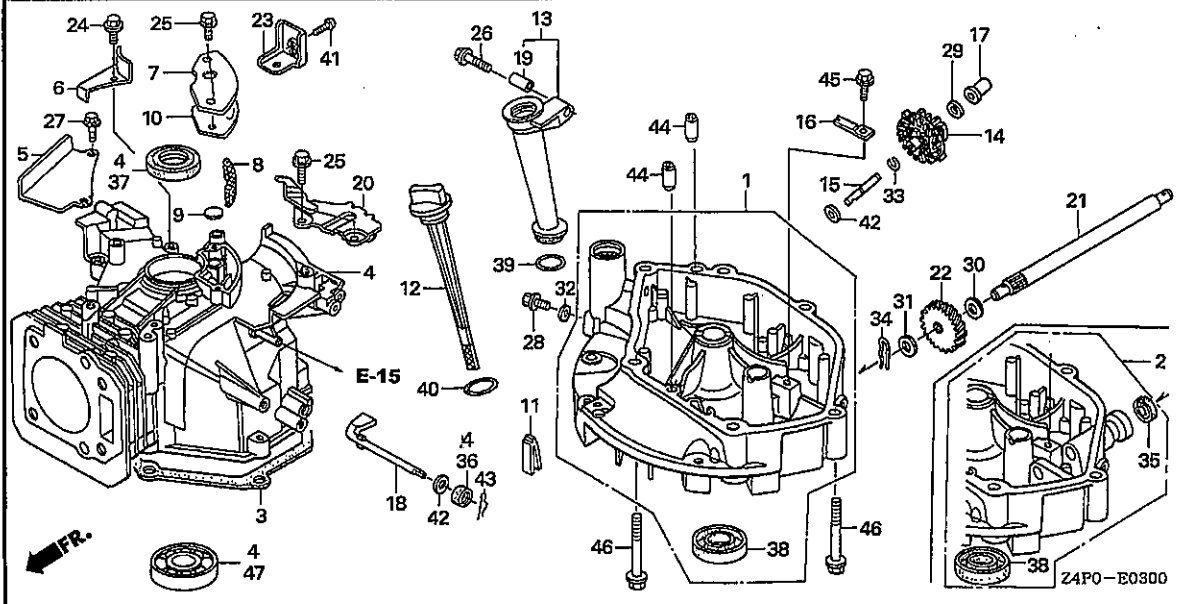
2

Ref. No.	Part No.	Description	Reqd. QTY	Serial No.	Parts catalogue code
			GXV		
			160		
			UH2		
1	12204-ZE1-306	GUIDE, IN. VALVE (O.S.) .....	(1)		
2	12205-ZE1-315	GUIDE, EX. VALVE (O.S.) .....	(1)		
3	12210-Z1V-000	HEAD COMP., CYLINDER .....	1		
4	12216-ZE5-300	CLIP, VALVE GUIDE .....	1		
5	12251-ZE7-000	GASKET, CYLINDER HEAD .....	1		
6	12311-ZG9-800	COVER, HEAD .....	1		
7	12391-ZE7-M10	PACKING, HEAD COVER .....	1		
8	90013-883-000	BOLT, FLANGE, 6X12(CT200) ...	3		
9	90014-952-000	BOLT, FLANGE, 6X14(CT200) ...	1		
10	90043-ZE6-000	BOLT, STUD, 6X109 .....	2		
11	90048-ZC3-000	BOLT, STUD, 6X85 .....	2		
12	94301-10160	DOWEL PIN, 10X16 .....	2		
13	95701-08050-00	BOLT, FLANGE, 8X50 .....	4		
14	98079-54846	PLUG, SPARK (BPR4ES) (NGK) ...	(1)		
	98079-54855	PLUG, SPARK (W14EPR-U) (DENSO)	(1)		
	98079-55846	PLUG, SPARK (BPR5ES) (NGK) ...	1		
	98079-55855	PLUG, SPARK (W16EPR-U) (DENSO)	1		
	98079-56846	PLUG, SPARK (BPR6ES) (NGK) ...	(1)		
	98079-56855	PLUG, SPARK (W20EPR-U) (DENSO)	(1)		

E-3

CYLINDER BARREL

C 2



Ref. No.	L.O.N.	(Relative ref. Number) Description	F.R.T.
1		(2)	
1131C1		PAN, OIL .....	0.3
3		1131C2 PACKING, OIL PAN .....	0.3
4		1101A0 BARREL, CYLINDER .....	1.5
7		(10)	
1111D1		COVER, BREATHER AND/OR PACKING, BREATHER COVER .....	0.2
8		1111E5 FILTER, BREATHER .....	0.2
9		1111K9 VALVE, BREATHER .....	0.2
13		(39)	
1101B9		EXTENSION, OIL FILLER AND/OR PACKING, OIL FILLER EXTENSION .....	0.1
14		1161C4 GOVERNOR ASSEMBLY .....	0.4
17		1161B6 SLIDER, GOVERNOR .....	0.4
18		1161B4 SHAFT, GOVERNOR ARM .....	0.3
21		(35)	
2131J5		SHAFT, DRIVE .....	0.3
22		2131D5 GEAR, DRIVEN .....	0.3
36		1101C4 OIL SEAL, GOVERNOR ARM SHAFT ..	0.3
37		1101E6 OIL SEAL, CRANKSHAFT :UPPER ..	1.1
38		1101E7 OIL SEAL, CRANKSHAFT :LOWER ..	0.3
47		1101J6 BEARING, CRANKSHAFT :UPPER ...	1.2

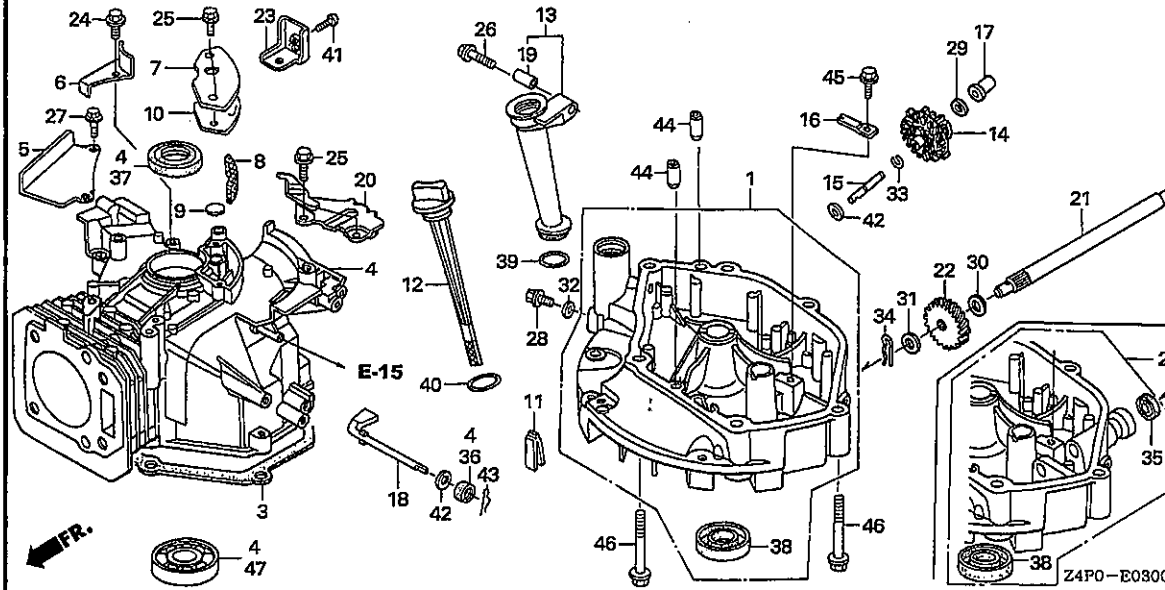
Ref. No.	Part No.	Description	Reqd. QTY		Serial No.	Parts catalogue code
			GXV 160 UH2			
1	11300-Z1V-U90	PAN ASSY., OIL .....	1		N5M	
	11300-Z1V-V50	.....	1		SFY	
	11300-Z1V-000	.....	1		A1S,A1SA,A14,N1,N1F,N15,N4,N45,N55,T1AH	
2	11300-Z1V-800	PAN ASSY., OIL .....	1		SFL,SFL1,SFY1	
3	11381-ZE7-M10	PACKING, OIL PAN .....	1			
4	12000-Z1V-000	BARREL ASSY., CYLINDER .....	1		A1S,A1SA,A14	
	12000-Z2J-000	.....	1		N1,N1F,N15,N4,N45,N5M,N55,SFL,SFL1,SFY,SFY1,T1AH	
5	12125-Z1V-000	PLATE, GUIDE .....	1		N1,N1F,N15,N4,N45,N5M,N55,SFL,SFL1,SFY,SFY1,T1AH	
6	12126-Z1V-000	PLATE A, GUIDE .....	1		N1,N1F,N15,N4,N45,N5M,N55,SFL,SFL1,SFY,SFY1,T1AH	
	12126-Z1V-800	.....	1		A1S,A1SA,A14	
7	12355-Z1V-000	COVER COMP., BREATHER .....	1			
8	12367-883-003	FILTER, BREATHER .....	1			
9	12372-ZE7-000	VALVE, BREATHER .....	1			
10	12373-ZE7-000	PACKING, BREATHER COVER .....	1			
11	15335-ZE7-000	RUBBER, OIL RETURN .....	1			
12	15620-ZE6-810	GAUGE COMP., OIL LEVEL .....	1			
13	15630-ZE6-810	EXTENSION, OIL FILLER .....	1			
14	16510-ZE6-000	GOVERNOR ASSY. ....	1			
15	16515-ZE6-010	SHAFT, GOVERNOR HOLDER .....	1			
16	16525-ZE6-010	PLATE, GOVERNOR SHAFT HOLDER .....	1			
17	16531-Z1T-000	SLIDER, GOVERNOR .....	1			
18	16541-ZE7-000	SHAFT, GOVERNOR ARM .....	1			
19	17240-ZE6-000	COLLAR, EXTENSION .....	1			
20	17560-Z1V-000	STAY COMP., TANK .....	1			
21	23411-ZE7-000	SHAFT, DRIVE .....	1		SFL,SFL1,SFY1	

2

E-3

## CYLINDER BARREL

C 3

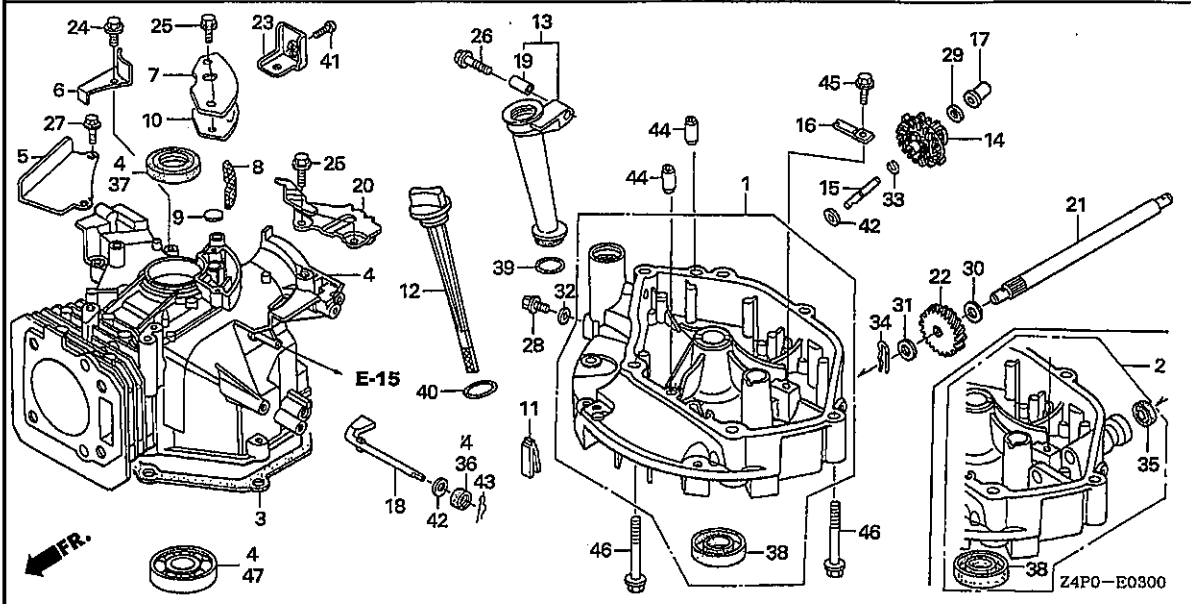


Ref. No.	Part No.	Description	Reqd. QTY		Serial No.	Parts catalogue code
			GXV 160 UH2			
22	23421-ZE6-000	GEAR, DRIVEN (18T) .....	1		----- SFL,SFL1,SFY1	
23	43143-Z1V-000	BASE COMP., HOLDER .....	1		----- A1S,A1SA,A14	
24	90013-883-000	BOLT, FLANGE, 6X12(CT200) ...	1			
25	90014-952-000	BOLT, FLANGE, 6X14(CT200) ...	4			
26	90017-883-000	BOLT, FLANGE, 6X32 .....	1			
27	90022-888-010	BOLT, FLANGE, 6X20(CT200) ...	2		----- N1,N1F,N15,N4,N45,N5M,N55,SFL,SFL1,SFY,SFY1,T1AH	
28	90131-ZE1-000	BOLT, DRAIN PLUG .....	1			
29	90451-ZE1-000	WASHER, THRUST, 6MM .....	1			
30	90452-166-600	WASHER, THRUST, 12MM .....	1		----- SFL,SFL1,SFY1	
31	90452-187-000	WASHER, 10X21 .....	1		----- SFL,SFL1,SFY1	
32	90601-ZE1-000	WASHER, DRAIN PLUG, 10.2MM ..	1			
33	90602-ZE1-000	CLIP, GOVERNOR HOLDER .....	1			
34	90701-ZE6-000	PIN, LOCK, 2.0 .....	1		----- SFL,SFL1,SFY1	
35	91205-Z1V-003	OIL SEAL, 12X20X6.5 .....	1		----- SFL,SFL1,SFY1	
36	91231-Z1V-003	OIL SEAL, 6X11X4 .....	1			
37	91251-Z1V-003	OIL SEAL, 25X38X7 .....	1			
38	91252-Z1V-003	OIL SEAL, 25.4X40X7 .....	1			
39	91301-Z1V-003	O-RING, 22.1X2.2 .....	1			
40	91302-Z1V-003	O-RING, 25.5X3 .....	1			
41	93500-05016-OA	SCREW, PAN, 5X16 .....	1		----- A1S,A1SA,A14	
42	94101-06800	WASHER, PLAIN, 6MM .....	2			
43	94251-08000	PIN, LOCK, 8MM .....	1			
44	94301-08140	DOWEL PIN, 8X14 .....	2			
45	95701-06012-08	BOLT, FLANGE, 6X12 .....	1			

E-3

CYLINDER BARREL

C 4



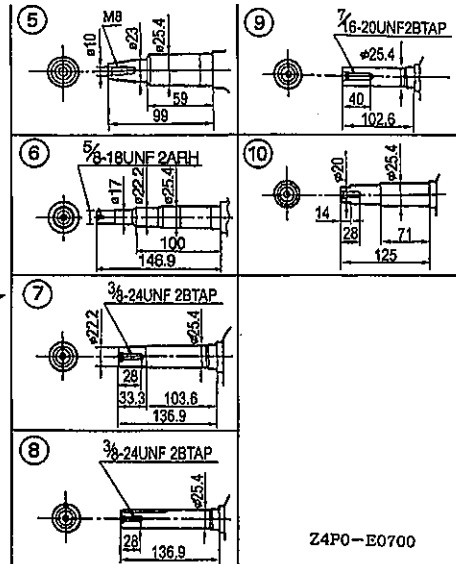
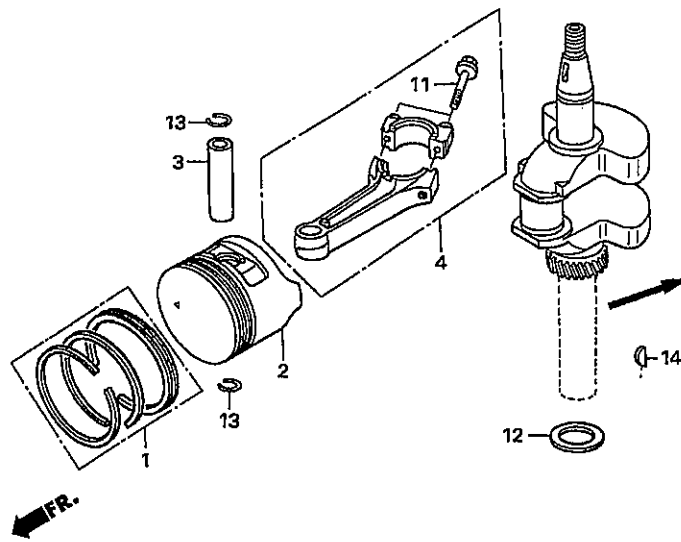
Ref. No.	Part No.	Description	Reqd. QTY		Serial No.	Parts catalogue code
			GXV	UH2		
46	95701-08050-00	BOLT, FLANGE, 8X50 .....	6			
47	96100-62050-00	BEARING, RADIAL BALL, 6205 ..	1			

2

E-7

CRANKSHAFT/PISTON

C 5



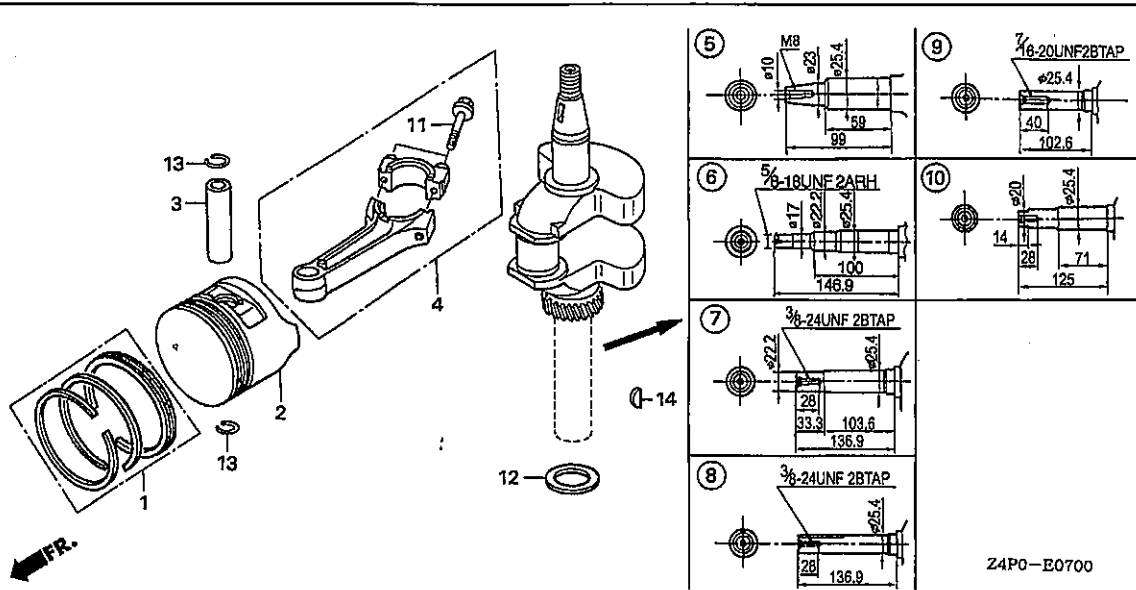
Ref. No.	L.O.N.	(Relative ref. Number) Description	F.R.T.
2	1111R1	(1,3,4) PISTON AND/OR RING SET AND/OR BEARING AND/OR ROD ..... .INCLUDES: Inspection/Measurement/Cleaning	1.2
5	1101F0	(6,7,8,9,10) CRANKSHAFT .....	1.1

Ref. No.	Part No.	Description	Reqd. QTY	Serial No.	Parts catalogue code
			GXV 160 UH2		
1	13010-ZL0-003	RING SET, PISTON (STD.) (TEIKOKU)	1		
	13010-ZL0-004	RING SET, PISTON (STD.) (NIPPON)	1		
	13011-ZL0-003	RING SET, PISTON (0.25) (TEIKOKU)	(1)		
	13011-ZL0-004	RING SET, PISTON (0.25) (NIPPON)	(1)		
	13012-ZL0-003	RING SET, PISTON (0.50) (TEIKOKU)	(1)		
	13012-ZL0-004	RING SET, PISTON (0.50) (NIPPON)	(1)		
	13013-ZL0-003	RING SET, PISTON (0.75) (TEIKOKU)	(1)		
	13013-ZL0-004	RING SET, PISTON (0.75) (NIPPON)	(1)		
2	13101-Z1T-000	PISTON (STD.) (JIALING-HONDA)	1		
	13102-ZE7-020	PISTON (0.25) .....	(1)		
	13103-ZE7-020	PISTON (0.50) .....	(1)		
	13104-ZE7-020	PISTON (0.75) .....	(1)		
3	13111-Z1T-000	PIN, PISTON .....	1		
4	13200-Z1V-000	ROD ASSY., CONNECTING .....	1		
5	13310-ZE7-U41	CRANKSHAFT COMP. ....	1	----- N5M	
6	13310-ZE7-V20	CRANKSHAFT COMP. ....	1	----- T1AH	
7	13310-ZE7-010	CRANKSHAFT COMP. ....	1	----- A1S, A1SA, A14, N1, N1F, N15	
8	13310-ZE7-641	CRANKSHAFT COMP. ....	1	----- N4, N45	
9	13310-ZE7-661	CRANKSHAFT COMP. ....	1	----- N55	
10	13310-ZE7-771	CRANKSHAFT COMP. ....	1	----- SFL, SFL1, SFY, SFY1	

E-7

CRANKSHAFT/PISTON

C 6



Z4P0-E0700

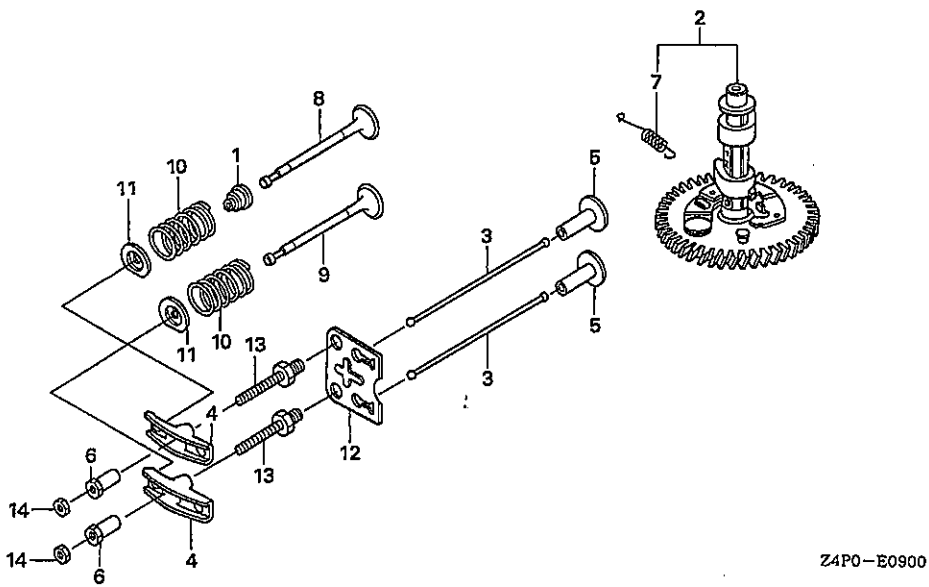
Ref. No.	Part No.	Description	Reqd. QTY	Serial No.	Parts catalogue code
			GXV 160 UH2		
11	90001-ZE1-000	BOLT, CONNECTING ROD .....	2		
12	90401-ZE7-000	WASHER, THRUST, 25.6MM .....	1		
13	90551-ZE1-000	CLIP, PISTON PIN, 18MM .....	2		
14	90741-ZV4-000	KEY, SPECIAL, 16X15 .....	1	----- A1SA	

2

E-9

## CAMSHAFT

C 7



Ref. No.	L.O.N.	(Relative ref. Number) Description	F.R.T.
1	1111K2	SEAL, INTAKE VALVE STEM ..... .INCLUDES: Valve clearance adjustment	0.6
2	1111C2	CAMSHAFT ..... .INCLUDES: Valve clearance adjustment	0.6
3	1111L6	ROD, PUSH :INTAKE ..... .INCLUDES: Valve clearance adjustment	0.2
	1111L6A	.Replace exhaust push rod add	0.1
	1111L7	ROD, PUSH :EXHAUST ..... .INCLUDES: Valve clearance adjustment	0.2
	1111L7A	.Replace intake push rod add	0.1
4	1111A2	ARM, ROCKER :INTAKE ..... .INCLUDES: Valve clearance adjustment	0.2
	1111A2A	.Replace exhaust rocker arm add .....	0.1
	1111A1	ARM, ROCKER :EXHAUST ..... .INCLUDES: Valve clearance adjustment	0.2
	1111A1A	.Replace intake rocker arm add	0.1
5	1111L9	LIFTER, VALVE :INTAKE ..... .NOTE: Same time for two units	0.6

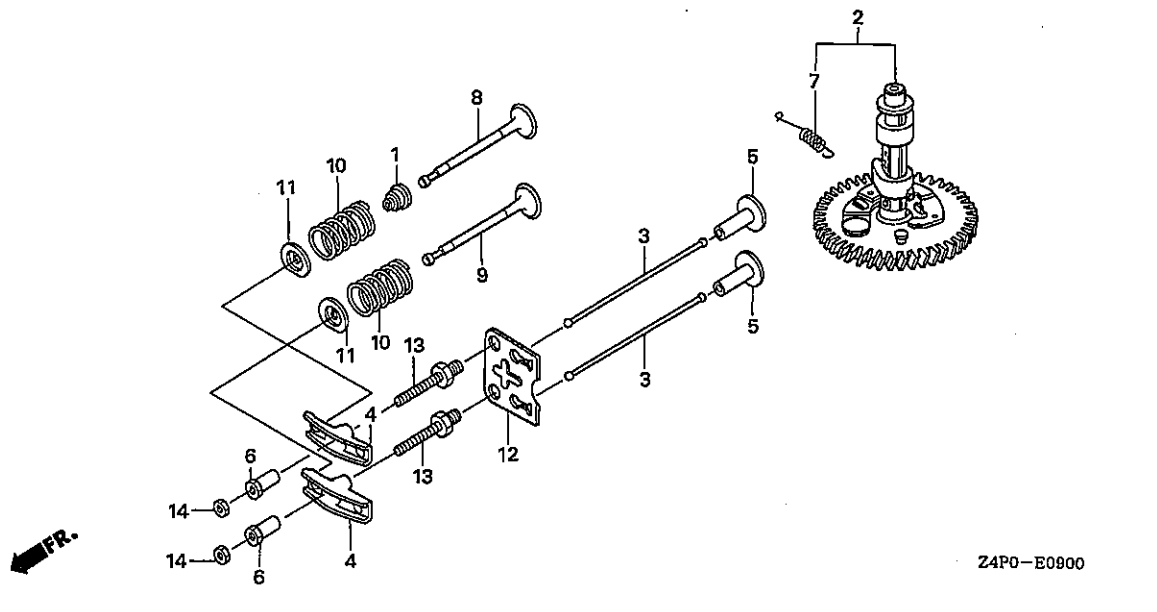
Ref. No.	Part No.	Description	Reqd. QTY	Serial No.	Parts catalogue code
			GXV		
			160		
			UH2		
1	12209-ZE6-003	SEAL, VALVE STEM .....	1		
2	14100-ZE7-000	CAMSHAFT ASSY. ....	1	----- A1S,A1SA,A14,N1,N1F,N15,N4,N45,N5M,N55,T1AH	
	14100-ZE7-770	.....	1	----- SFL,SFL1,SFY,SFY1	
3	14410-ZE1-010	ROD, PUSH .....	2		
4	14431-ZE1-000	ARM, VALVE ROCKER .....	2		
5	14441-ZE1-010	LIFTER, VALVE .....	2		
6	14451-ZE1-013	PIVOT, ROCKER ARM .....	2		
7	14568-ZE1-000	SPRING, WEIGHT RETURN .....	1		
8	14711-ZF1-000	VALVE, IN. ....	1		
9	14721-ZE7-000	VALVE, EX. ....	1		
10	14751-ZE1-000	SPRING, VALVE .....	2		
11	14771-ZE1-000	RETAINER, IN. VALVE SPRING ..	2		
12	14791-ZE1-010	PLATE, PUSH ROD GUIDE .....	1		
13	90012-ZE0-010	BOLT, PIVOT, 8MM .....	2		
14	90206-ZE1-000	NUT, PIVOT ADJUSTING .....	2		



E-9

CAMSHAFT

C 8



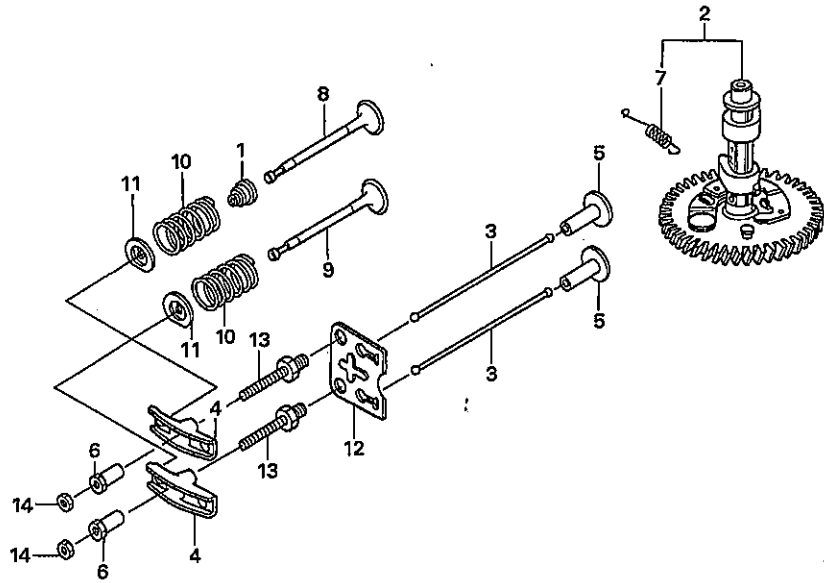
Ref. No.	L.O.N.	(Relative ref. Number) Description	F.R.T.
+ 5		.INCLUDES: Valve clearance adjustment	
	1111M0	LIFTER, VALVE :EXHAUST .....	0.6
		.NOTE: Same time for two units	
		.INCLUDES: Valve clearance adjustment	
8	1111L1	VALVE, INTAKE .....	0.7
		.INCLUDES: Valve clearance adjustment and reface	
	1111L1E	.Replace intake and exhaust all add .....	0.1
9	1111L0	VALVE, EXHAUST .....	0.7
		.INCLUDES: Valve clearance adjustment and reface	
	1111L0E	.Replace intake and exhaust all add .....	0.1
10	1111P3	SPRING, VALVE :INTAKE .....	0.6
		.INCLUDES: Valve clearance adjustment	
	1111P3A	.Replace intake and exhaust all add .....	0.1
	1111P4	SPRING, VALVE :EXHAUST .....	0.6
		.INCLUDES: Valve clearance adjustment	
+			

2

E-9

# CAMSHAFT

C 9



Z4P0-E0900

Ref. No.	L.O.N.	(Relative ref. Number) Description	F.R.T.
----------	--------	------------------------------------	--------

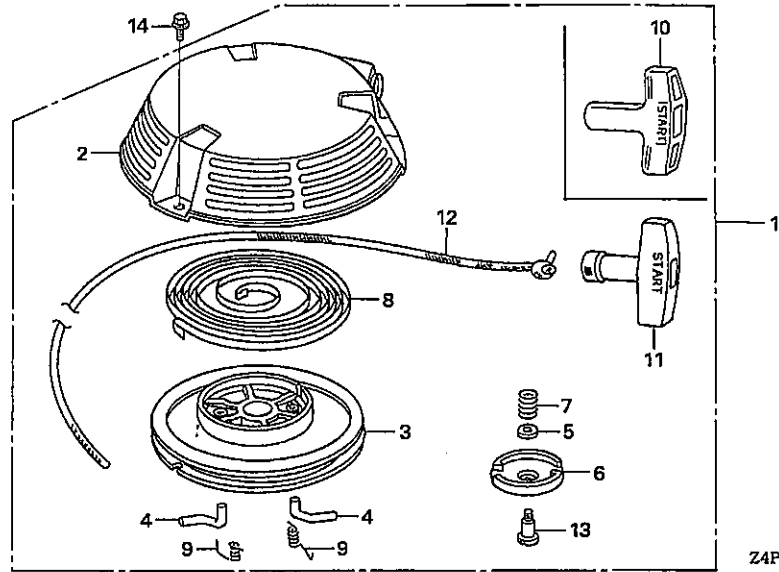
+10	1111P4A	.Replace intake and exhaust all add .....	0.1
-----	---------	--	-----

2

E-11

RECOIL STARTER

C10



Ref. No.	L.O.N.	(Relative ref. Number) Description	F.R.T.
1	1121B9	STARTER, RECOIL .....	0.1
3	1121B1	REEL, RECOIL STARTER .....	0.3
4		(9)	
	1121B0	RATCHET, STARTER AND/OR SPRING, RATCHET .....	0.2
		.NOTE: Same time for two units (7)	
6	1121A4	GUIDE, RATCHET .....	0.2
8	1121B7	SPRING, RECOIL STARTER RETURN (11)	0.3
10	1121A3	GRIP, RECOIL STARTER .....	0.1
12	1121B3	ROPE, RECOIL STARTER .....	0.3

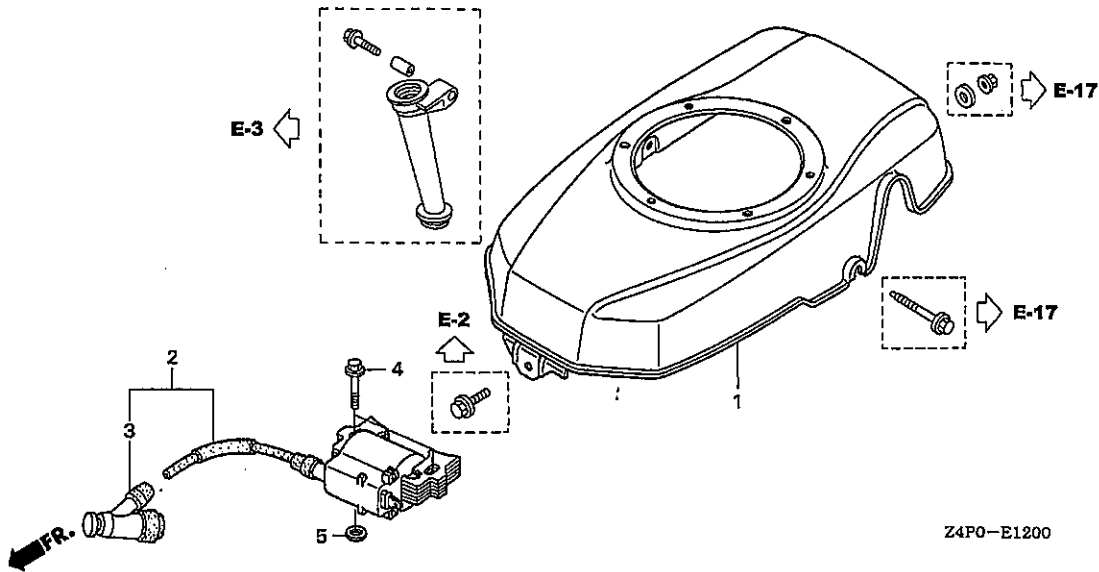
Ref. No.	Part No.	Description	Reqd. QTY	Serial No.	Parts catalogue code
			GXV 180 UH2		
1	28400-Z1V-003ZA	STARTER ASSY., RECOIL	1	-----	SFL1,T1AH
		*NH1*.....BLACK	1	-----	N1,N4,SFL,SFL1,SFY,SFY1
	28400-Z1V-003ZB	*R280*.....POWER RED	1	-----	
	28400-Z1V-801ZA	STARTER ASSY., RECOIL (LONG ROPE)	1	-----	A1S,A1SA,A14,N1F,N15,N45,N5M,N55
		*NH1*.....BLACK	1	-----	A1S,A1SA,A14,N1F,N15,N45,N5M,N55
	28400-Z1V-801ZB	*R280*.....POWER RED	1	-----	
2	28410-Z1V-003ZA	CASE COMP., RECOIL STARTER	1	-----	A1S,A1SA,A14,N1,N1F,N15,N4,N45,N5M,N55,SFL,SFL1,SFY,SFY1
		*R280*.....POWER RED	1	-----	A1S,A1SA,A14,N1F,N15,N45,N5M,N55,SFL1,T1AH
	28410-Z1V-003ZB	*NH1*.....BLACK	1	-----	
3	28420-Z1V-003	REEL, RECOIL STARTER (BLACK)	1	-----	
4	28422-ZH8-801	RATCHET, STARTER .....	2	-----	
5	28431-ZH8-801	PLATE, FRICTION .....	1	-----	
6	28433-ZH8-801	GUIDE, RATCHET .....	1	-----	A1S,A1SA,A14,N1F,N15,N45,N5M,N55
7	28441-ZH8-801	SPRING, FRICTION .....	1	-----	
8	28442-ZH8-003	SPRING, RECOIL STARTER .....	1	-----	
9	28443-ZH8-801	SPRING, RETURN .....	2	-----	
10	28461-ZE1-003	NOB, RECOIL STARTER .....	1	-----	
11	28461-ZH8-003	GRIP, STARTER .....	1	-----	N1,N4,SFL,SFL1,SFY,SFY1,T1AH
12	28462-ZH8-003	ROPE, RECOIL STARTER .....	1	-----	N1,N4,SFL,SFL1,SFY,SFY1,T1AH
	28462-Z1V-801	ROPE, RECOIL STARTER (LONG) (2360MM)	1	-----	A1S,A1SA,A14,N1F,N15,N45,N5M,N55
13	90003-ZH8-801	SCREW, SETTING .....	1	-----	
14	95701-06008-00	BOLT, FLANGE, 6X8 .....	3	-----	

2

E-12

FAN COVER

C11



Ref. No.	L.O.N.	(Relative ref. Number) Description	F.R.T.
1	1141G8	COVER, ENGINE COOLING FAN .....	0.2
2	6141A5	COIL, IGNITION(ONE) .....	0.2
3	6141B8	TERMINAL, HIGH TENSION .....	0.1

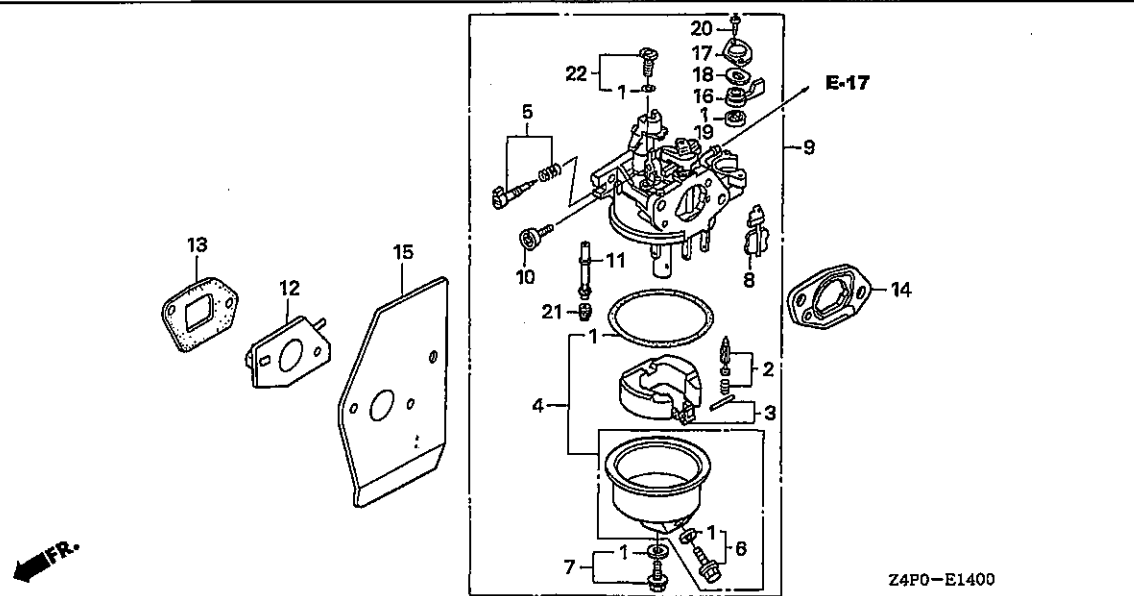
2

Ref. No.	Part No.	Description	Reqd. QTY		Serial No.	Parts catalogue code
			GXV	UH2		
1	19610-Z1V-000ZA	COVER COMP., FAN				
		*R280*.....POWER RED	1		----- A1S,A1SA,A14,N1,N1F,N15,N4,N45,N5M,N55,SFL,SFL1,SFY,SFY1	
		*NH1*.....BLACK	1		----- A1S,A1SA,A14,N1F,N15,N45,N5M,N55,SFL1,T1AH	
2	30500-Z1V-003	COIL ASSY., IGNITION .....	1			
3	30700-Z1V-003	CAP ASSY., NOISE SUPPRESSOR .	1			
4	90015-883-000	BOLT, FLANGE, 6X28 .....	2			
5	90581-Z1V-000	WASHER, PLAIN, 6MM .....	2			

E-14

## CARBURETOR

C12



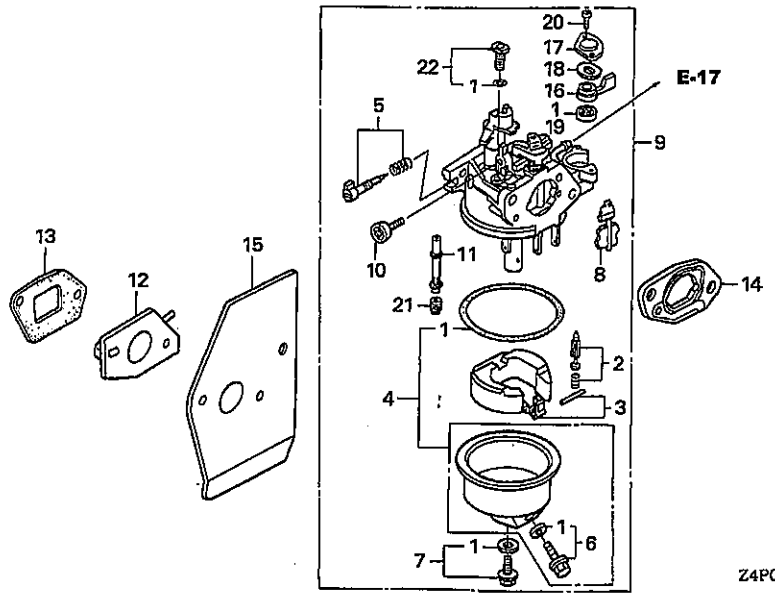
Ref. No.	L.O.N.	(Relative ref. Number) Description	F.R.T.
1	3111B1	GASKET SET, CARBURETOR .....	0.3
2	3111E1	(3) VALVE SET, FLOAT AND/OR FLOAT SET .....	0.3
4	3111A3	CHAMBER SET, FLOAT AND/OR GASKET, FLOAT CHAMBER .....	0.2
5	3111D7	SCREW SET, PILOT .....	0.2
9	3111F3	CARBURETOR .....	0.2
12	3111C0	(13) INSULATOR, CARBURETOR AND/OR PACKING, INSULATOR .....	0.2
15	3111C8	PACKING, CARBURETOR .....	0.2
19	3101C5	(16,17,18) PACKING, FUEL COCK .....	0.2
21	3111C3	JET, MAIN .....	0.3

Ref. No.	Part No.	Description	Reqd. QTY	Serial No.	Parts catalogue code
			GXV 160 UH2		
1	16010-ZE0-025	GASKET SET .....	1		
2	16011-ZE0-005	VALVE SET, FLOAT .....	1		
3	16013-ZE0-005	FLOAT SET .....	1		
4	16015-ZE0-831	CHAMBER SET, FLOAT .....	1		
5	16016-ZH7-W01	SCREW SET, PILOT .....	1		
6	16024-ZE1-811	SCREW SET, DRAIN .....	1		
7	16028-ZE0-005	SCREW SET .....	1		
8	16045-ZE7-005	CHOKE SET .....	1		
9	16100-Z1V-J71	CARBURETOR ASSY. (BE66M A) ..	1	----- N5M	
	16100-Z1V-003	CARBURETOR ASSY. (BE66J A) ..	1	----- A1S,A1SA,A14,N1,N1F,N15,N4,N45,N55,SFL,SFL1,SFY,SFY1,T1AH	
10	16124-ZE0-005	SCREW, THROTTLE STOP .....	1		
11	16166-Z1V-J71	NOZZLE, MAIN .....	1	----- N5M	
	16166-Z1V-003	.....	1	----- A1S,A1SA,A14,N1,N1F,N15,N4,N45,N55,SFL,SFL1,SFY,SFY1,T1AH	
12	16211-ZE7-000	INSULATOR, CARBURETOR .....	1		
13	16212-ZE7-M10	PACKING, INSULATOR .....	1		
14	16220-ZE6-010	SPACER COMP., CARBURETOR .....	1		
15	16221-ZE7-M11	PACKING, CARBURETOR .....	1		
16	16953-ZE1-812	LEVER, COCK .....	1		
17	16954-ZE1-812	PLATE, LEVER SETTING .....	1		
18	16956-ZE1-811	SPRING, COCK LEVER .....	1		
19	16957-ZE1-812	PACKING, FUEL COCK .....	1		
20	93500-03006-1H	SCREW, PAN, 3X6 .....	2		
21	99101-ZH8-0600	JET, MAIN, #60 .....	(1)	----- A1S,A1SA,A14,N1,N1F,N15,N4,N45,N55,SFL,SFL1,SFY,SFY1,T1AH	
	99101-ZH8-0620	JET, MAIN, #62 .....	(1)		

E-14

CARBURETOR

C13



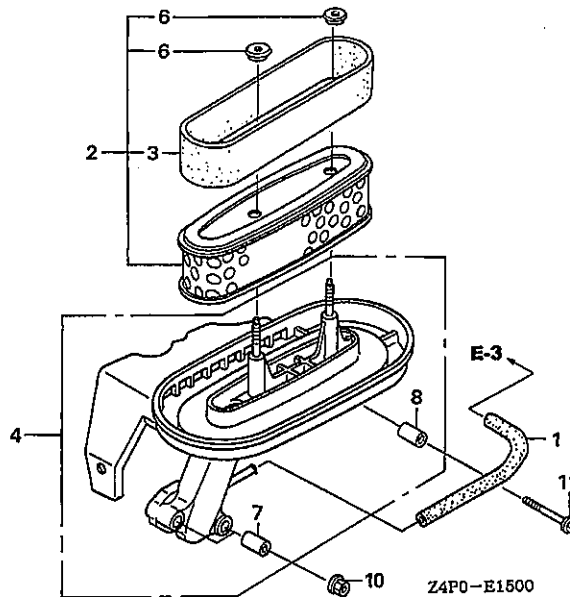
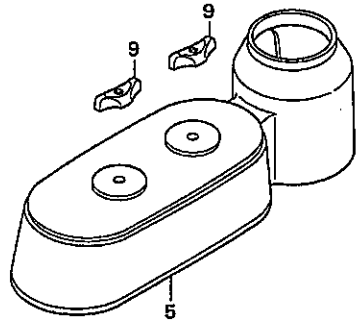
Ref. No.	Part No.	Description	Reqd. QTY		Serial No.	Parts catalogue code
			GXV	160		
21)	99101-ZH8-0650	JET, MAIN, #65	1			A1S, A1SA, A14, N1, N1F, N15, N4, N45, N55, SFL, SFL1, SFY, SFY1, T1AH
	99101-ZH8-0680	JET, MAIN, #68	(1)			N5M
22	99204-ZE0-0350	JET SET, PILOT, #35	1			N5M

2

E-15

AIR CLEANER

C14



FR.

Ref. No.	L.O.N.	(Relative ref. Number) Description	F.R.T.
1	1111K5	TUBE, BREATHER .....	0.1
2	3121B8	ELEMENT, AIR CLEANER .....	0.1
3	3121C1	FILTER, OUTER .....	0.1
4	3121A5	CASE, AIR CLEANER .....	0.2
5	3121B1	COVER, AIR CLEANER .....	0.1

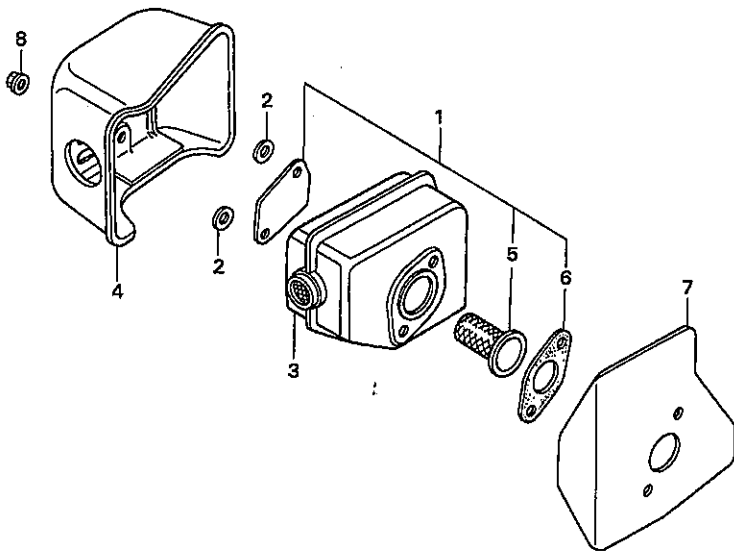
Ref. No.	Part No.	Description	Reqd. QTY		Serial No.	Parts catalogue code
			GXV	UH2		
1	15721-ZE7-000	TUBE, BREATHER .....	1			
2	17210-Z1V-003	ELEMENT, AIR CLEANER .....	1			
3	17218-888-003	FILTER, OUTER .....	1			
4	17220-Z1V-000	CASE COMP., AIR CLEANER .....	1			
5	17231-Z1V-000	COVER, AIR CLEANER .....	1			
6	17232-891-000	GROMMET, AIR CLEANER .....	2			
7	17238-ZE7-710	COLLAR, AIR CLEANER .....	2			
8	17239-ZE6-300	COLLAR B, AIR CLEANER .....	1			
9	90300-Z1V-000	NUT, AIR CLEANER .....	2			
10	94050-06000	NUT, FLANGE, 6MM .....	2			
11	95701-06035-00	BOLT, FLANGE, 6X35 .....	1			

2

E-16

MUFFLER

C15



Z4P0-E1600

Ref. No.	L.O.N.	(Relative ref. Number) Description	F.R.T.
1	3131A0	ARRESTER KIT, SPARK .....	0.2
3	3131C5	MUFFLER, EXHAUST .....	0.2
4	3131D6	PROTECTOR, EXHAUST MUFFLER ...	0.1
5	3131A1	ARRESTER, SPARK .....	0.2
6	3131B4	GASKET, EXHAUST MUFFLER .....	0.2

Ref. No.	Part No.	Description	Reqd. QTY		Serial No.	Parts catalogue code
			GXV	UH2		
1	06180-ZE6-820	ARRESTER KIT, SPARK .....	(1)			
2	18292-ZE7-M10	PACKING, PROTECTOR .....	2		A1S,A1SA,A14,N1F,N15,N4,N45,N5M,N55,SFL,SFL1,SFY,SFY1	
3	18310-Z1V-000	MUFFLER COMP. ....	1			
4	18320-Z1V-000	PROTECTOR COMP., MUFFLER ...	1			
5	18355-888-810	ARRESTER, SPARK .....	(1)			
6	18381-ZE6-820	GASKET, MUFFLER .....	(1)			
7	18381-Z1V-000	GASKET, MUFFLER .....	1			
8	90343-ZE6-000	NUT, SELF-LOCK, 6MM .....	2			

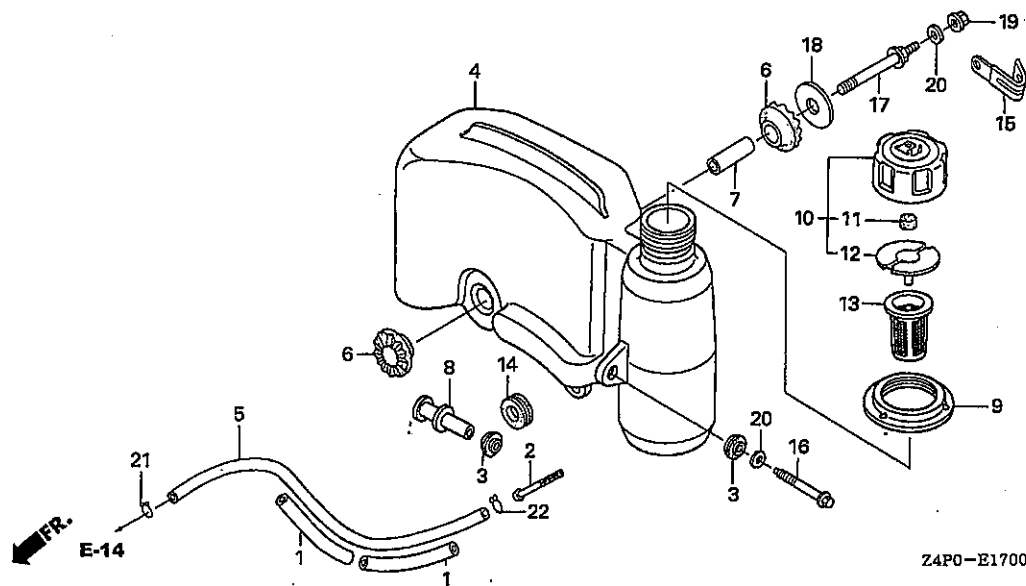
2



E-17

FUEL TANK

C16



Ref. No.	L.O.N.	(Relative ref. Number) Description	F.R.T.
2	3101H8	STRAINER, FUEL .....	0.2
4	3101H7	TANK, FUEL .....	0.2
5	3101F6	TUBE, FUEL .....	0.1
6	3101M0	RUBBER B, TANK MOUNTING .....	0.2
.NOTE: Same time for two units			
12	3101L9	PACKING, FUEL CAP .....	0.1
13	3101M1	GAUGE, FUEL LEVEL .....	0.1

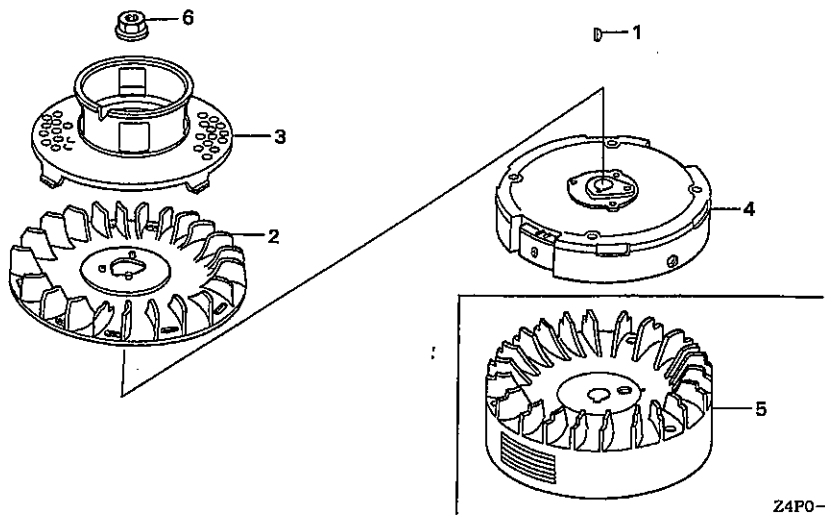
Ref. No.	Part No.	Description	Reqd. QTY		Serial No.	Parts catalogue code
			GXV 160 UH2			
1	16854-ZH8-000	RUBBER, SUPPORTER (107MM) .....	2			
2	16952-Z1V-000	STRAINER, FUEL .....	1			
3	17506-ZE7-000	RUBBER, TANK SETTING .....	2			
4	17510-Z1V-010	TANK COMP., FUEL .....	1			
5	17512-ZE7-000	TUBE, FUEL .....	1			
6	17516-896-700	RUBBER B, TANK MOUNTING .....	2			
7	17518-Z1V-000	COLLAR, TANK SET .....	1			
8	17519-Z1V-000	COLLAR COMP., TANK .....	1			
9	17532-Z1V-000	RUBBER, TANK MOUNTING .....	1			
10	17620-Z1V-000	CAP ASSY., FUEL TANK .....	1			
11	17622-888-010	SPONGE, FUEL CAP BREATHER .....	1			
12	17624-ZE7-000	PACKING, FUEL CAP .....	1			
13	17636-Z1V-010	GAUGE, FUEL LEVEL .....	1			
14	80103-MG2-000	CUSHION, RR. FENDER .....	1			
15	90010-GEO-710	CLIP, TUBE .....	1		----- A1S, A14	
16	90014-Z1V-000	BOLT, FLANGE, 6X47(CT200) .....	1			
17	90016-Z1V-000	BOLT, TANK STAY .....	1			
18	90455-896-700	WASHER, TANK MOUNTING .....	1			
19	94050-06000	NUT, FLANGE, 6MM .....	1			
20	94103-06000	WASHER, PLAIN, 6MM .....	2			
21	95002-02080	CLIP, TUBE (B8) .....	1			
22	95002-70000	CLIP, TUBE (C11) .....	1			

2

E-19

FLYWHEEL(1)

D 1



Ref. No.	L.O.N.	(Relative ref. Number) Description	F.R.T.
2	1141G7	FAN, ENGINE COOLING .....	0.2
3	1121A9	PULLEY, RECOIL STARTER .....	0.2
4	(5)	FLYWHEEL .....	0.3
	2161B5	FLYWHEEL .....	0.3

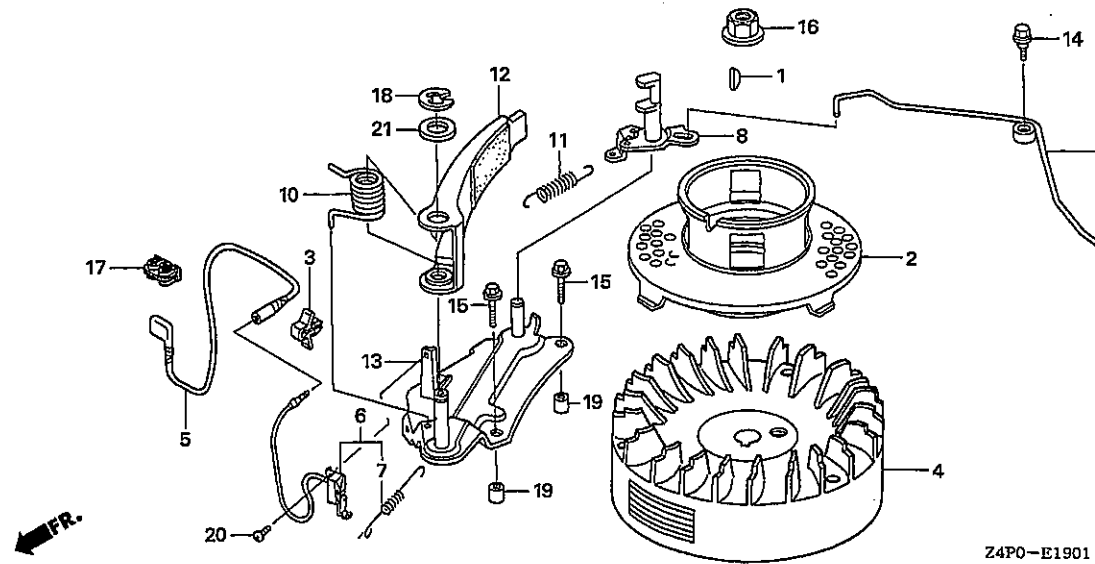
Ref. No.	Part No.	Description	Reqd. QTY	Serial No.	Parts catalogue code
1	13331-357-000	KEY, SPECIAL WOODRUFF, 25X18	1	-----	N1,N1F,N15,N4,N45,N5M,N55,SFL,SFL1,SFY,SFY1,T1AH
2	19511-Z1T-000	FAN, COOLING .....	1	-----	N1F,N5M,SFL,SFL1,SFY,SFY1
3	28450-Z1V-000	PULLEY COMP., STARTER .....	1	-----	N1,N1F,N15,N4,N45,N5M,N55,SFL,SFL1,SFY,SFY1,T1AH
4	31110-Z1V-003	FLYWHEEL COMP. ....	1	-----	N1F,N5M,SFL,SFL1,SFY,SFY1
5	31110-Z1V-810	FLYWHEEL COMP. (BRAKE) .....	1	-----	N1,N15,N4,N45,N55,T1AH
6	90201-Z1T-000	NUT, SPECIAL, 14MM .....	1	-----	N1,N1F,N15,N4,N45,N5M,N55,SFL,SFL1,SFY,SFY1,T1AH

2

E-19-1

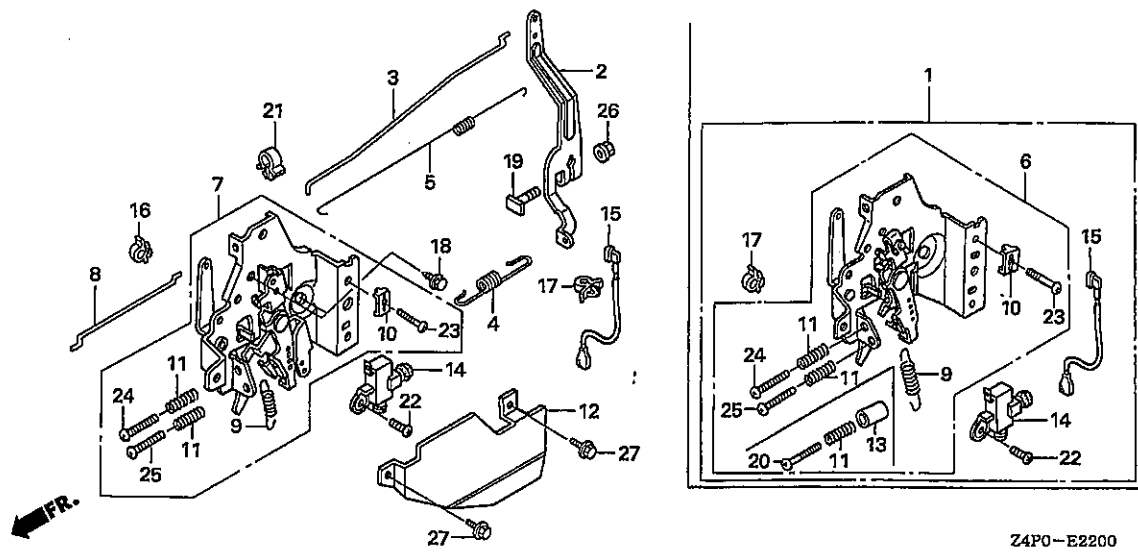
## FLYWHEEL(2)

D 2



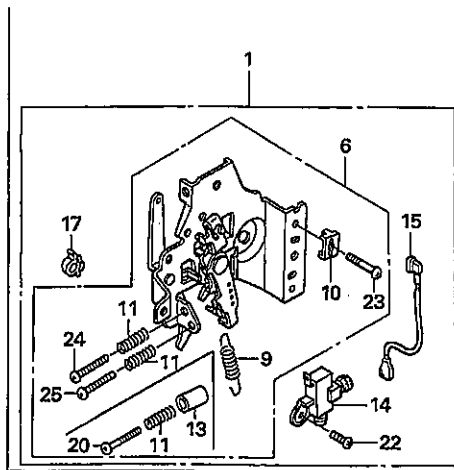
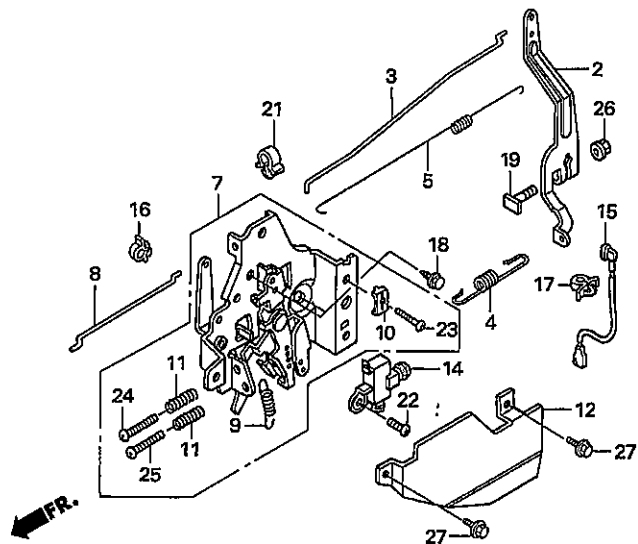
Ref. No.	L.O.N.	(Relative ref. Number) Description	F.R.T.
2	1121A9	PULLEY, RECOIL STARTER .....	0.2
4	2161B5	FLYWHEEL .....	0.3
6	6151D9	SWITCH, ENGINE STOP .....	0.3
8	2161G3	CAM, FLYWHEEL BRAKE .....	0.4
10	2161G2	SPRING, FLYWHEEL BRAKE .....	0.4
11	2161G1	SPRING, FLYWHEEL BRAKE SHOE RETURN .....	0.4

Ref. No.	Part No.	Description	Reqd. QTY	Serial No.	Parts catalogue code
			GXV 160 UH2		
1	13331-357-000	KEY, SPECIAL WOODRUFF, 25X18	1	-----	A1S,A1SA,A14
2	28450-21V-000	PULLEY COMP., STARTER .....	1	-----	A1S,A1SA,A14
3	30701-883-000	CLIP, HIGH TENSION CORD (8MM)	1	-----	A1S,A1SA,A14
4	31110-21V-810	FLYWHEEL COMP. (BRAKE) .....	1	-----	A1S,A1SA,A14
5	32195-21V-810	CORD, STOP SWITCH (BRAKE) ...	1	-----	A1S,A1SA,A14
6	35120-21V-811	SWITCH ASSY., ENGINE STOP (BRAKE)	1	-----	A1S,A1SA,A14
7	35129-21V-811	SPRING, SWITCH CONTROL .....	1	-----	A1S,A1SA,A14
8	43140-21V-000	CAM COMP., BRAKE .....	1	-----	A1S,A1SA,A14
9	43145-ZE7-003	ROD, THROTTLE RETURN .....	1	-----	A1S,A1SA,A14
10	75112-ZE6-000	SPRING, BRAKE .....	1	-----	A1S,A1SA,A14
11	75113-ZE6-000	SPRING, BRAKE RETURN .....	1	-----	A1S,A1SA,A14
12	75120-ZE6-013	BRAKE COMP. ....	1	-----	A1S,A1SA,A14
13	75130-ZE7-000	BASE COMP., BRAKE .....	1	-----	A1S,A1SA,A14
14	90015-ZE6-000	BOLT, FLANGE, 6MM .....	1	-----	A1S,A1SA,A14
15	90018-ZE1-000	BOLT, FLANGE, 6X23 (CT200) ...	2	-----	A1S,A1SA,A14
16	90201-21T-000	NUT, SPECIAL, 14MM .....	1	-----	A1S,A1SA,A14
17	90505-MCT-000	CLAMP, PIPE .....	1	-----	A1S,A1SA,A14
18	90653-723-000	E-RING, 10MM .....	1	-----	A1S,A1SA,A14
19	90702-ZE6-000	DOWEL PIN, 8X9 .....	2	-----	A1S,A1SA,A14
20	93500-04008-0A	SCREW, PAN, 4X8 .....	1	-----	A1S,A1SA,A14
21	94102-12800	WASHER, PLAIN, 12MM .....	1	-----	A1S,A1SA,A14



Ref. No.	L.O.N.	(Relative ref. Number) Description	F.R.T.
1	(7)		
1	1161A5	CONTROL, THROTTLE/GOVERNOR ...	0.3
2	1161AD	ARM, GOVERNOR .....	0.3
3	1161B1	ROD, GOVERNOR .....	0.3
4	1161C5	SPRING, GOVERNOR .....	0.2
5	1161C2	SPRING, THROTTLE RETURN .....	0.3
8	8101R5	ROD, GOVERNOR CHOKE CONTROL ..	0.2
9	1161C0	SPRING, LEVER .....	0.1
14	6151K1	SWITCH, THROTTLE/GOVERNOR ENGINE STOP .....	0.2
15	6111B3	CORD, STOP SWITCH .....	0.2

Ref. No.	Part No.	Description	Reqd. QTY		Serial No.	Parts catalogue code
			GXV	UH2		
1	16500-ZE7-W31	CONTROL ASSY. ....	1	-----	SFL,SFL1,SFY,SFY1	
2	16551-ZE7-000	ARM, GOVERNOR .....	1	-----	N1,N4,N5M,SFL,SFL1,SFY,SFY1,T1AH	
3	16555-ZE7-000	ROD, GOVERNOR .....	1	-----	N1,N4,N5M,SFL,SFL1,SFY,SFY1,T1AH	
4	16561-ZE7-020	SPRING, GOVERNOR .....	1	-----	N1,N4,SFL,SFL1,SFY,SFY1,T1AH	
	16561-ZE7-711	.....	1	-----	N5M	
5	16562-ZE6-000	SPRING, THROTTLE RETURN .....	1	-----	N1,N4,N5M,SFL,SFL1,SFY,SFY1,T1AH	
6	16570-ZE7-W10	CONTROL COMP. ....	1	-----	SFL,SFL1,SFY,SFY1	
	16570-ZE7-772	.....	1	-----	N5M	
7	16570-ZE7-020	CONTROL ASSY. ....	1	-----	N1,N4,T1AH	
8	16573-ZE7-000	ROD, CHOKE .....	1	-----	N1,N4,N5M,SFL,SFL1,SFY,SFY1,T1AH	
9	16576-ZE7-300	SPRING, LEVER .....	1	-----	N1,N4,N5M,SFL,SFL1,SFY,SFY1,T1AH	
10	16576-891-000	HOLDER, CABLE .....	1	-----	N1,N4,N5M,SFL,SFL1,SFY,SFY1,T1AH	
11	16584-883-300	SPRING, CONTROL ADJUSTING ...	2	-----	N1,N4,N5M,SFL,SFL1,SFY,SFY1,T1AH	
12	16585-ZE7-000	PROTECTOR, CONTROL .....	1	-----	N1,N4,N5M,SFL,SFL1,SFY,SFY1,T1AH	
13	16599-ZG1-M10	COLLAR, STOPPER .....	1	-----	SFL,SFL1,SFY,SFY1	
14	36100-ZE7-013	SWITCH ASSY., ENGINE STOP ...	1	-----	N1,N4,N5M,SFL,SFL1,SFY,SFY1,T1AH	
15	36101-ZE7-020	CORD, STOP SWITCH .....	1	-----	N1,N4,N5M,SFL,SFL1,SFY,SFY1,T1AH	
16	36103-ZE1-000	HOLDER, STOP SWITCH CORD ....	1	-----	N1,N4,N5M,SFL,SFL1,SFY,SFY1,T1AH	
17	46392-SC2-003	CLAMP, BRAKE PIPE (GRAY) ....	1	-----	N1,N4,N5M,SFL,SFL1,SFY,SFY1,T1AH	
18	90013-883-000	BOLT, FLANGE, 6X12(CT200) ...	2	-----	N1,N4,N5M,SFL,SFL1,SFY,SFY1,T1AH	
19	90015-ZE5-010	BOLT, GOVERNOR ARM .....	1	-----	N1,N4,N5M,SFL,SFL1,SFY,SFY1,T1AH	
20	90016-ZE7-W00	SCREW, RECESSED, 5X28 .....	1	-----	SFL,SFL1,SFY,SFY1	
21	90659-680-013	CLIP, WIRE HARNESS .....	1	-----	N1,N4,N5M,SFL,SFL1,SFY,SFY1,T1AH	
22	93500-04008-0A	SCREW, PAN, 4X8 .....	1	-----	N1,N4,N5M,SFL,SFL1,SFY,SFY1,T1AH	
23	93500-05016-0A	SCREW, PAN, 5X16 .....	1	-----	N1,N4,N5M,SFL,SFL1,SFY,SFY1,T1AH	



Z4P0-E2200

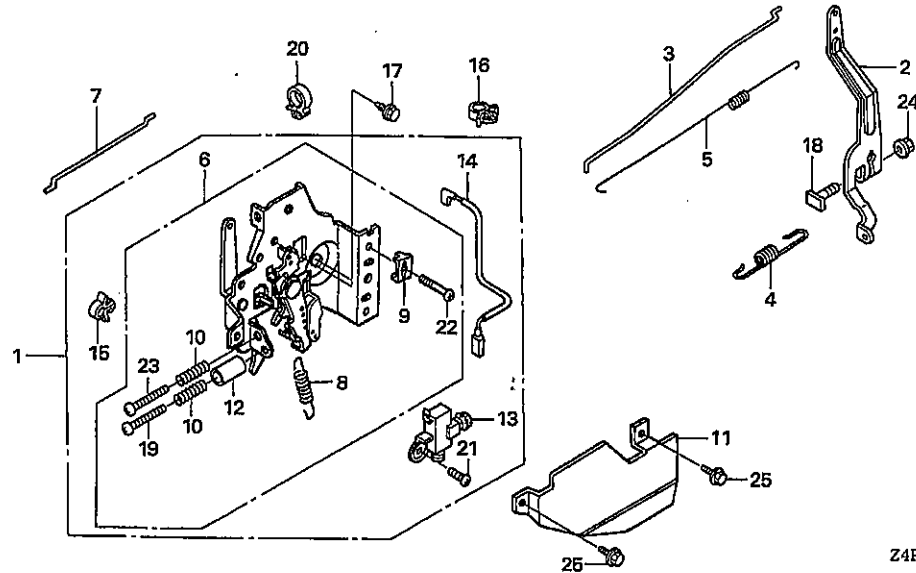
Ref. No.	Part No.	Description	Reqd. QTY		Serial No.	Parts catalogue code
			GXV 180 UH2			
24	93500-05020-0A	SCREW, PAN, 5X20	1		N1,N4,N5M,SFL,SFL1,SFY,SFY1,T1AH	
25	93500-05028-0A	SCREW, PAN, 5X28	1		N1,N4,N5M,T1AH	
26	94050-06000	NUT, FLANGE, 6MM	1		N1,N4,N5M,SFL,SFL1,SFY,SFY1,T1AH	
27	95701-06010-00	BOLT, FLANGE, 6X10	2		N1,N4,N5M,SFL,SFL1,SFY,SFY1,T1AH	

2

E-22-1

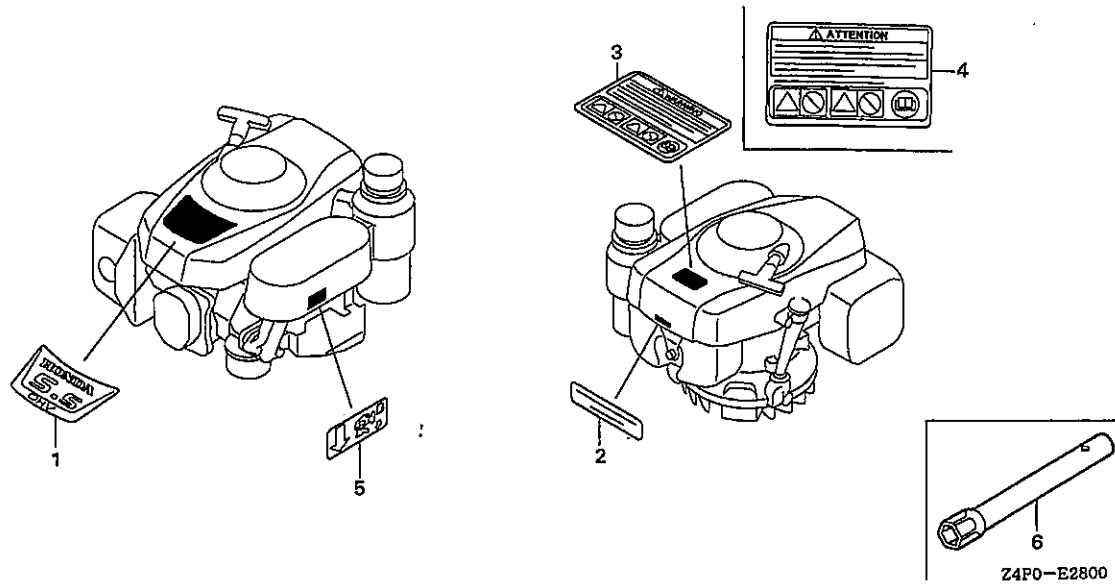
CONTROL(2)

D 5



Ref. No.	L.O.N.	(Relative ref. Number) Description	F.R.T.
1		(6)	
1	1161A5	CONTROL, THROTTLE/GOVERNOR ...	0.3
2	1161A0	ARM, GOVERNOR .....	0.3
3	1161B1	ROD, GOVERNOR .....	0.3
4	1161C5	SPRING, GOVERNOR .....	0.2
5	1161C2	SPRING, THROTTLE RETURN .....	0.3
7	8101R5	ROD, GOVERNOR CHOKE CONTROL ..	0.2
8	1161E4	SPRING, LEVER(A) .....	0.2
13	6151K1	SWITCH, THROTTLE/GOVERNOR ENGINE STOP .....	0.2
14	6111B3	CORD, STOP SWITCH .....	0.2

Ref. No.	Part No.	Description	Reqd. QTY		Serial No.	Parts catalogue code
			GXV	160 UH2		
1	16500-ZE7-W11	CONTROL ASSY. (EN) (STD.)	1		N1F,N15,N45,N55	
2	16551-ZE7-000	ARM, GOVERNOR	1		A1S,A1SA,A14,N1F,N15,N45,N55	
3	16555-ZE7-000	ROD, GOVERNOR	1		A1S,A1SA,A14,N1F,N15,N45,N55	
4	16561-ZE7-020	SPRING, GOVERNOR	1		A1S,A1SA,A14,N1F,N15,N45,N55	
5	16562-ZE6-000	SPRING, THROTTLE RETURN	1		A1S,A1SA,A14,N1F,N15,N45,N55	
6	16570-ZE7-W00	CONTROL COMP. (STD.)	1		A14,N1F,N15,N45,N55	
	16570-ZE7-W20	CONTROL COMP. (EN) (BRILL)	1		A1S,A1SA	
7	16573-ZE7-000	ROD, CHOKE	1		A1S,A1SA,A14,N1F,N15,N45,N55	
8	16576-ZE7-300	SPRING, LEVER	1		A1S,A1SA,A14,N1F,N15,N45,N55	
9	16576-891-000	HOLDER, CABLE	1		A1S,A1SA,A14,N1F,N15,N45,N55	
10	16584-883-300	SPRING, CONTROL ADJUSTING	2		A1S,A1SA,A14,N1F,N15,N45,N55	
11	16585-ZE7-000	PROTECTOR, CONTROL	1		A1S,A1SA,N1F,N15,N45,N55	
12	16599-ZG1-M10	COLLAR, STOPPER	1		A1S,A1SA,A14,N1F,N15,N45,N55	
13	36100-ZE7-013	SWITCH ASSY., ENGINE STOP	1		N1F,N15,N45,N55	
14	36101-ZE7-020	CORD, STOP SWITCH	1		N1F,N15,N45,N55	
15	36103-ZE1-000	HOLDER, STOP SWITCH CORD	1		N1F,N15,N45,N55	
16	46392-SC2-003	CLAMP, BRAKE PIPE (GRAY)	1		N1F,N15,N45,N55	
17	90013-883-000	BOLT, FLANGE, 6X12 (CT200)	2		A1S,A1SA,A14,N1F,N15,N45,N55	
18	90015-ZE5-010	BOLT, GOVERNOR ARM	1		A1S,A1SA,A14,N1F,N15,N45,N55	
19	90016-ZE7-W00	SCREW, RECESSED, 5X28	1		A1S,A1SA,A14,N1F,N15,N45,N55	
20	90659-680-013	CLIP, WIRE HARNESS	1		A1S,A1SA,A14,N1F,N15,N45,N55	
21	93500-04008-0A	SCREW, PAN, 4X8	1		N1F,N15,N45,N55	
22	93500-05016-0A	SCREW, PAN, 5X16	1		A1S,A1SA,A14,N1F,N15,N45,N55	
23	93500-05020-0A	SCREW, PAN, 5X20	1		A1S,A1SA,A14,N1F,N15,N45,N55	
24	94050-06000	NUT, FLANGE, 6MM	1		A1S,A1SA,A14,N1F,N15,N45,N55	
25	95701-06010-00	BOLT, FLANGE, 6X10	2		A1S,A1SA,N1F,N15,N45,N55	



Ref. No.	L.O.N.	(Relative ref. Number) Description	F.R.T.
----------	--------	---------------------------------------	--------

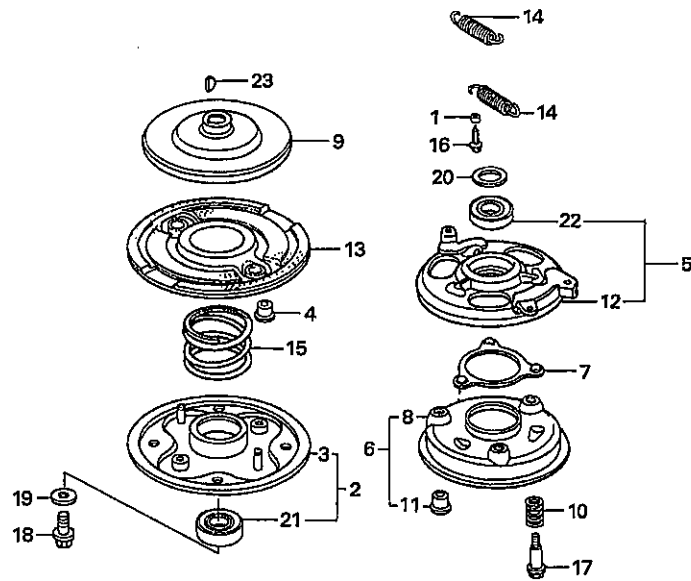
NO INFORMATION .....

Ref. No.	Part No.	Description	Reqd. QTY		Serial No.	Parts catalogue code
			GXV	UH2		
1	87101-21V-000	MARK, EMBLEM .....	1			
2	87504-21V-000	MARK, MANUFACTURER .....	1			
3	87516-24N-000	MARK, OPERATOR CAUTION (ENGLISH)(MADE IN CHINA)	1			
	87516-24N-810	MARK, OPERATOR CAUTION (FRENCH)(MADE IN CHINA)	(1)			
4	87516-24N-800	MARK, OPERATOR CAUTION (PICTOGRAPH)(MADE IN CHINA)	1			
5	87524-21V-000	MARK, FUEL COCK CAUTION .....	1			
6	99004-21002	WRENCH, BOX (P21) .....	1	-----	SFL1,SFY,SFY1	
	99004-21003	.....	1	-----	N1,N15,N4,N45,N5M,N55,T1AH	

E-40

## BLADE HOLDER

D 7



Ref. No.	L.O.N.	(Relative ref. Number) Description	F.R.T.
----------	--------	------------------------------------	--------

NO INFORMATION .....

Ref. No.	Part No.	Description	Reqd. QTY		Serial No.	Parts catalogue code
			GXV	UH2		
1	19512-883-000	COLLAR, FAN .....	2			SFL1,SFY1
2	72600-VA4-010	HOLDER ASSY., BLADE .....	1			SFL1,SFY1
3	72610-VA4-000	HOLDER COMP., BLADE .....	1			SFL1,SFY1
4	72613-VA4-000	BUSH, BLADE HOLDER .....	2			SFL1,SFY1
5	75090-VA4-030	PLATE ASSY., BALL CONTROL ...	1			SFL1,SFY1
6	75100-VA4-010	BRAKE COMP. ....	1			SFL1,SFY1
7	75110-VA4-000	RETAINER COMP., BALL .....	1			SFL1,SFY1
8	75120-VA4-010	DISK, BRAKE .....	1			SFL1,SFY1
9	75130-VA4-000	DISK, DRIVE .....	1			SFL1,SFY1
10	75132-VA4-000	SPRING, BRAKE HOLDER .....	3			SFL1,SFY1
11	75133-VA4-000	BUSH, BRAKE HOLDER .....	3			SFL1,SFY1
12	75140-VA4-020	PLATE COMP., BALL CONTROL ...	1			SFL1,SFY1
13	75150-VA3-J01	DISK COMP., DRIVEN .....	1			SFL1,SFY1
14	75182-VA3-J00	SPRING, CLUTCH RETURN (53.0MM)	2			SFL1,SFY1
15	75183-VA3-J00	SPRING, CLUTCH (36.6MM) .....	1			SFL1,SFY1
16	90014-952-000	BOLT, FLANGE, 6X14(CT200) ...	4			SFL1,SFY1
17	90021-VA4-000	BOLT, SPECIAL, 6MM .....	3			SFL1,SFY1
18	90105-960-003	BOLT, HEX., 10X25 .....	1			SFL1,SFY1
19	90409-952-000	WASHER, 10MM .....	1			SFL1,SFY1
20	90501-952-010	WASHER, THRUST .....	1			SFL1,SFY1
21	91102-VA4-013	BEARING, RADIAL BALL, 6204 ..	1			SFL1,SFY1
22	91103-VA4-003	BEARING, RADIAL BALL, 60/22 ..	1			SFL1,SFY1
23	94401-16150	KEY, WOODRUFF, 16X15 .....	1			SFL1,SFY1



# PART NO. INDEX

E 1

Part Number	Address	Page	Ref.	Part Number	Address	Page	Ref.	Part Number	Address	Page	Ref.	Part Number	Address	Page	Ref.	Part Number	Address	Page	Ref.
06000				14000				16570-ZE7-W00	D5	36	6	19610-Z1V-000ZB	C11	26	1	43000			
06180-ZE6-820	C15	30	1	14100-ZE7-000	C7	22	2	16570-ZE7-W10	D3	34	6	23000				43140-Z1V-000	D2	33	8
11000				14100-ZE7-770	C7	22	2	16570-ZE7-W20	D5	36	6	23411-ZE7-000	C2	17	21	43143-Z1V-000	C3	18	23
11300-Z1V-000	C2	17	1	14410-ZE1-010	C7	22	3	16573-ZE7-000	D3	34	8	23421-ZE6-000	C3	18	22	43145-ZE7-003	D2	33	9
11300-Z1V-800	C2	17	2	14431-ZE1-000	C7	22	4	16576-891-000	D3	34	10	28000				46000			
11300-Z1V-U90	C2	17	1	14441-ZE1-010	C7	22	5	16576-ZE7-300	D3	34	9	28400-Z1V-003ZA	C10	25	1	46392-SC2-003	D3	34	17
11300-Z1V-V50	C2	17	1	14451-ZE1-013	C7	22	6	16584-883-300	D3	34	11	28400-Z1V-003ZB	C10	25	1	D5	36	16	
11381-ZE7-M10	C2	17	3	14568-ZE1-000	C7	22	7	16585-ZE7-000	D5	36	8	28410-Z1V-801ZA	C10	25	1	72000			
12000				14711-ZF1-000	C7	22	8	16585-ZE7-000	D3	34	12	28400-Z1V-801ZB	C10	25	1	72600-VA4-010	D7	38	2
12000-Z1V-000	C2	17	4	14721-ZE7-000	C7	22	9	16599-ZG1-M10	D5	36	11	28410-Z1V-003ZA	C10	25	2	72610-VA4-000	D7	38	3
12000-Z2J-000	C2	17	4	14751-ZE1-000	C7	22	10	16854-ZH8-000	D3	34	13	28410-Z1V-003ZB	C10	25	2	72613-VA4-000	D7	38	4
12125-Z1V-000	C2	17	5	14771-ZE1-000	C7	22	11	16952-Z1V-000	D5	36	12	28420-Z1V-003	C10	25	3	75000			
12126-Z1V-000	C2	17	6	14791-ZE1-010	C7	22	12	16953-ZE1-812	D3	34	12	28422-ZH8-801	C10	25	4	75090-VA4-030	D7	38	5
12126-Z1V-800	C2	17	6	15000				16954-ZE1-812	C12	27	16	28431-ZH8-801	C10	25	5	75100-VA4-010	D7	38	6
12204-ZE1-306	C1	16	1	15335-ZE7-000	C2	17	11	16954-ZE1-812	C12	27	17	28433-ZH8-801	C10	25	6	75110-VA4-000	D7	38	7
12205-ZE1-315	C1	16	2	15620-ZE6-810	C2	17	12	16956-ZE1-811	C12	27	18	28441-ZH8-801	C10	25	7	75112-ZE6-000	D2	33	10
12209-ZE6-003	C7	22	1	15630-ZE6-810	C2	17	13	16957-ZE1-812	C12	27	19	28442-ZH8-003	C10	25	8	75113-ZE6-000	D2	33	11
12210-Z1V-000	C1	16	3	15721-ZE7-000	C14	29	1	17000				28443-ZH8-801	C10	25	9	75120-VA4-010	D7	38	8
12216-ZE5-300	C1	16	4	16000				17210-Z1V-003	C14	29	2	28450-Z1V-000	D1	32	2	75120-ZE6-013	D2	33	12
12251-ZE7-000	C1	16	5	16010-ZE0-025	C12	27	1	17218-888-003	C14	29	3	28461-ZE1-003	C10	25	10	75130-VA4-000	D7	38	9
12311-ZG9-800	C1	16	6	16011-ZE0-005	C12	27	2	17231-Z1V-000	C14	29	5	28461-ZH8-003	C10	25	11	75130-ZE7-000	D2	33	13
12355-Z1V-000	C2	17	7	16013-ZE0-005	C12	27	3	17232-891-000	C14	29	6	28462-Z1V-801	C10	25	12	75132-VA4-000	D7	38	10
12367-883-003	C2	17	8	16015-ZE0-831	C12	27	4	17238-ZE7-710	C14	29	7	28462-ZH8-003	C10	25	12	75133-VA4-000	D7	38	11
12372-ZE7-000	C2	17	9	16016-ZH7-W01	C12	27	5	17239-ZE6-300	C14	29	8	30000				75140-VA4-020	D7	38	12
12373-ZE7-000	C2	17	10	16024-ZE1-811	C12	27	6	17240-ZE6-000	C2	17	19	30500-Z1V-003	C11	26	2	75150-VA3-J01	D7	38	13
12391-ZE7-M10	C1	16	7	16028-ZE0-005	C12	27	7	17506-ZE7-000	C16	31	3	30700-Z1V-003	C11	26	3	75182-VA3-J00	D7	38	14
13000				16045-ZE7-005	C12	27	8	17510-Z1V-010	C16	31	4	30701-883-000	D2	33	3	75183-VA3-J00	D7	38	15
13010-ZL0-003	C5	20	1	16100-Z1V-003	C12	27	9	17512-ZE7-000	C16	31	5	31000				80000			
13010-ZL0-004	C5	20	1	16100-Z1V-J71	C12	27	9	17516-896-700	C16	31	6	31110-Z1V-003	D1	32	4	80103-MG2-000	C16	31	14
13011-ZL0-003	C5	20	1	16124-ZE0-005	C12	27	10	17518-Z1V-000	C16	31	7	31110-Z1V-810	D1	32	5	87000			
13011-ZL0-004	C5	20	1	16166-Z1V-003	C12	27	11	17519-Z1V-000	C16	31	8	32000				87101-Z1V-000	D6	37	1
13012-ZL0-003	C5	20	1	16166-Z1V-J71	C12	27	11	17532-Z1V-000	C16	31	9	32195-Z1V-810	D2	33	5	87504-Z1V-000	D6	37	2
13012-ZL0-004	C5	20	1	16211-ZE7-000	C12	27	12	17560-Z1V-000	C2	17	20	35000				87516-Z4N-000	D6	37	3
13013-ZL0-003	C5	20	1	16212-ZE7-M10	C12	27	13	17620-Z1V-000	C16	31	10	35120-Z1V-811	D2	33	6	87516-Z4N-800	D6	37	4
13013-ZL0-004	C5	20	1	16220-ZE6-010	C12	27	14	17622-888-010	C16	31	11	35129-Z1V-811	D2	33	7	87516-Z4N-810	D6	37	3
13101-Z1T-000	C5	20	2	16221-ZE7-M11	C12	27	15	17624-ZE7-000	C16	31	12	36000				87524-Z1V-000	D6	37	5
13102-ZE7-020	C5	20	2	16500-ZE7-W11	D5	36	1	17636-Z1V-010	C16	31	13	36100-ZE7-013	D3	34	14	90000			
13103-ZE7-020	C5	20	2	16500-ZE7-W31	D3	34	1	18292-ZE7-M10	C15	30	2	36101-ZE7-020	D3	34	15	90001-ZE1-000	C6	21	11
13104-ZE7-020	C5	20	2	16510-ZE6-000	C2	17	14	18310-Z1V-000	C15	30	3	36103-ZE1-000	D3	34	16	90003-ZH8-801	C10	25	13
13111-Z1T-000	C5	20	3	16515-ZE6-010	C2	17	15	18320-Z1V-000	C15	30	4	90010-GE0-710	C16	31	15	90012-ZE0-010	C7	22	13
13200-Z1V-000	C5	20	4	16525-ZE6-010	C2	17	16	18355-888-810	C15	30	5	90013-883-000	C1	16	8	C3	18	24	
13310-ZE7-010	C5	20	7	16531-Z1T-000	C2	17	17	18381-Z1V-000	C15	30	7	90013-883-000	C1	16	8	D3	34	18	
13310-ZE7-641	C5	20	8	16541-ZE7-000	C2	17	18	18381-ZE6-820	C15	30	6	90013-883-000	C1	16	8	D5	36	17	
13310-ZE7-661	C5	20	9	16555-ZE7-000	D3	34	3	19000				90014-952-000	C1	16	9	D3	34	18	
13310-ZE7-771	C5	20	10	16561-ZE7-020	D3	34	4	19511-Z1T-000	D1	32	2					D5	36	17	
13310-ZE7-U41	C5	20	5	16562-ZE6-000	D3	34	5	19512-883-000	D7	38	1					D5	36	17	
13310-ZE7-V20	C5	20	6	16570-ZE7-020	D3	34	7	19610-Z1V-000ZA	C11	26	1					D5	36	17	
13331-357-000	D1	32	1	16570-ZE7-772	D3	34	6												
	D2	33	1																

3

# PART NO. INDEX

E 2

Part Number	Address	Page	Ref.	Part Number	Address	Page	Ref.	Part Number	Address	Page	Ref.	Part Number	Address	Page	Ref.
90014-952-000	C3	18	25	93500-05016-0A	C3	18	41								
	D7	38	16		D3	34	23								
90014-Z1V-000	C16	31	16		D5	36	22								
90015-883-000	C11	26	4	93500-05020-0A	D4	35	24								
90015-ZE5-010	D3	34	19		D5	36	23								
	D5	36	18	93500-05028-0A	D4	35	25								
90015-ZE6-000	D2	33	14												
90016-Z1V-000	C16	31	17	94000											
90016-ZE7-W00	D3	34	20												
	D5	36	19	94050-06000	C14	29	10								
90017-883-000	C3	18	26		C16	31	19								
90018-ZE1-000	D2	33	15		D4	35	26								
90021-VA4-000	D7	38	17		D5	36	24								
90022-888-010	C3	18	27	94101-06800	C3	18	42								
90043-ZE6-000	C1	16	10	94102-12800	D2	33	21								
90048-ZC3-000	C1	16	11	94103-06000	C16	31	20								
90105-960-003	D7	38	18	94251-08000	C3	18	43								
90131-ZE1-000	C3	18	28	94301-08140	C3	18	44								
90201-Z1T-000	D1	32	6	94301-10160	C1	16	12								
	D2	33	16	94401-16150	D7	38	23								
90206-ZE1-000	C7	22	14												
90300-Z1V-000	C14	29	9	95000											
90343-ZE6-000	C15	30	8												
90401-ZE7-W00	C6	21	12	95002-02080	C16	31	21								
90409-952-000	D7	38	19	95002-70000	C16	31	22								
90451-ZE1-000	C3	18	29	95701-06008-00	C10	25	14								
90452-166-600	C3	18	30	95701-06010-00	D4	35	27								
90452-187-000	C3	18	31		D5	36	25								
90455-896-700	C16	31	18	95701-06012-08	C3	18	45								
90501-952-010	D7	38	20	95701-06035-00	C14	29	11								
90505-MCT-000	D2	33	17	95701-08050-00	C1	16	13								
90551-ZE1-000	C6	21	13		C4	19	46								
90581-Z1V-000	C11	26	5												
90601-ZE1-000	C3	18	32	96000											
90602-ZE1-000	C3	18	33												
90653-723-000	D2	33	18	96100-62050-00	C4	19	47								
90659-680-013	D3	34	21												
	D5	36	20	98000											
90701-ZE6-000	C3	18	34												
90702-ZE6-000	D2	33	19	98079-54846	C1	16	14								
90741-ZV4-000	C6	21	14	98079-54855	C1	16	14								
				98079-55846	C1	16	14								
91000				98079-55855	C1	16	14								
				98079-56846	C1	16	14								
				98079-56855	C1	16	14								
91102-VA4-013	D7	38	21												
91103-VA4-003	D7	38	22												
91205-Z1V-003	C3	18	35	99000											
91231-Z1V-003	C3	18	36												
91251-Z1V-003	C3	18	37	99004-21002	D6	37	6								
91252-Z1V-003	C3	18	38	99004-21003	D6	37	6								
91301-Z1V-003	C3	18	39	99101-ZH8-0600	C12	27	21								
91302-Z1V-003	C3	18	40	99101-ZH8-0620	C12	27	21								
				99101-ZH8-0650	C13	28	21								
93000				99101-ZH8-0680	C13	28	21								
				99204-ZE0-0350	C13	28	22								
93500-03006-1H	C12	27	20												
93500-04008-0A	D2	33	20												
	D3	34	22												
	D5	36	21												

3

## PART NAME INDEX

F 1

Part name	Address	Page	Ref.	Part name	Address	Page	Ref.	Part name	Address	Page	Ref.
[ A ]				CASE COMP., RECOIL STARTER	C10	25	2	[ F ]			
ARM, GOVERNOR	D3	34	2	CHAMBER SET, FLOAT	C12	27	4	FAN, COOLING	D1	32	2
	D5	36	2	CHOKE SET	C12	27	8	FILTER, BREATHER	C2	17	8
ARM, VALVE ROCKER	C7	22	4	CLAMP, BRAKE PIPE	D3	34	17	FILTER, OUTER	C14	29	3
ARRESTER KIT, SPARK	C15	30	1		D5	36	16	FLOAT SET	C12	27	3
ARRESTER, SPARK	C15	30	5	CLAMP, PIPE	D2	33	17	FLYWHEEL COMP.	D1	32	4
				CLIP, GOVERNOR HOLDER	C3	18	33		D2	33	4
[ B ]				CLIP, HIGH TENSION CORD	D2	33	3				
BARREL ASSY., CYLINDER	C2	17	4	CLIP, PISTON PIN, 18MM	C6	21	13				
BASE COMP., BRAKE	D2	33	13	CLIP, TUBE	C16	31	15				
BASE COMP., HOLDER	C3	18	23								
BEARING, RADIAL BALL, 60/22	D7	38	22	CLIP, VALVE GUIDE	C1	16	4	GASKET SET	C12	27	1
BEARING, RADIAL BALL, 6204	D7	38	21	CLIP, WIRE HARNESS	D3	34	21	GASKET, CYLINDER HEAD	C1	16	5
BEARING, RADIAL BALL, 6205	C4	19	47		D5	36	20	GASKET, MUFFLER	C15	30	6
BOLT, CONNECTING ROD	C6	21	11	COIL ASSY., IGNITION	C11	26	2				
BOLT, DRAIN PLUG	C3	18	28	COLLAR B, AIR CLEANER	C14	29	8	GAUGE COMP., OIL LEVEL	C2	17	12
BOLT, FLANGE, 6MM	D2	33	14	COLLAR COMP., TANK	C16	31	8	GAUGE, FUEL LEVEL	C16	31	13
BOLT, FLANGE, 6X10	D4	35	27	COLLAR, AIR CLEANER	C14	29	7	GEAR, DRIVEN	C3	18	22
	D5	36	25	COLLAR, EXTENSION	C2	17	19	GOVERNOR ASSY.	C2	17	14
BOLT, FLANGE, 6X12	C1	16	8	COLLAR, FAN	D7	38	1	GRIP, STARTER	C10	25	11
	C3	18	24	COLLAR, STOPPER	D3	34	13	GROMMET, AIR CLEANER	C14	29	6
	D3	34	18		D5	36	12	GUIDE, EX. VALVE	C1	16	2
	D5	36	17	COLLAR, TANK SET	C16	31	7	GUIDE, IN. VALVE	C1	16	1
BOLT, FLANGE, 6X14	C1	16	9	CONTROL ASSY.	D3	34	1	GUIDE, RATCHET	C10	25	6
	C3	18	25								
	D7	38	16	CONTROL COMP.	D3	34	6	[ H ]			
BOLT, FLANGE, 6X20	C3	18	27		D5	36	6	HEAD COMP., CYLINDER	C1	16	3
BOLT, FLANGE, 6X23	D2	33	15	CORD, STOP SWITCH	D2	33	5	HOLDER ASSY., BLADE	D7	38	2
BOLT, FLANGE, 6X28	C11	26	4		D3	34	15	HOLDER COMP., BLADE	D7	38	3
BOLT, FLANGE, 6X32	C3	18	26		D5	36	14	HOLDER, CABLE	D3	34	10
BOLT, FLANGE, 6X35	C14	29	11	COVER COMP., BREATHER	C2	17	7		D5	36	9
BOLT, FLANGE, 6X47	C16	31	16	COVER COMP., FAN	C11	26	1	HOLDER, STOP SWITCH CORD	D3	34	16
BOLT, FLANGE, 6X8	C10	25	14	COVER, AIR CLEANER	C14	29	5		D5	36	15
BOLT, FLANGE, 8X50	C1	16	13	COVER, HEAD	C1	16	6	[ I ]			
	C4	19	46	CRANKSHAFT COMP.	C5	20	5	INSULATOR, CARBURETOR	C12	27	12
BOLT, GOVERNOR ARM	D3	34	19								
	D5	36	18					[ J ]			
BOLT, HEX., 10X25	D7	38	18					JET SET, PILOT	C13	28	22
BOLT, PIVOT, 8MM	C7	22	13	CUSHION, RR. FENDER	C16	31	14	JET, MAIN	C12	27	21
BOLT, SPECIAL, 6MM	D7	38	17						C13	28	21
BOLT, STUD, 6X109	C1	16	10	[ D ]				[ K ]			
BOLT, STUD, 6X85	C1	16	11	DISK COMP., DRIVEN	D7	38	13	KEY, SPECIAL WOODRUFF, 25X18	D1	32	1
BOLT, TANK STAY	C16	31	17	DISK, BRAKE	D7	38	8		D2	33	1
BRAKE COMP.	D2	33	12	DISK, DRIVE	D7	38	9	KEY, SPECIAL, 16X15	C6	21	14
	D7	38	6	DOWEL PIN, 10X16	C1	16	12	KEY, WOODRUFF, 16X15	D7	38	23
BUSH, BLADE HOLDER	D7	38	4	DOWEL PIN, 8X14	C3	18	44	KNOB, RECOIL STARTER	C10	25	10
BUSH, BRAKE HOLDER	D7	38	11	DOWEL PIN, 8X9	D2	33	19	[ L ]			
[ C ]				[ E ]				LEVER, COCK	C12	27	16
CAMSHAFT ASSY.	C7	22	2	ELEMENT, AIR CLEANER	C14	29	2	LIFTER, VALVE	C7	22	5
CAM COMP., BRAKE	D2	33	8	E-RING, 10MM	D2	33	18				
CAP ASSY., FUEL TANK	C16	31	10	EXTENSION, OIL FILLER	C2	17	13				
CAP ASSY., NOISE SUPPRESSOR	C11	26	3								
CARBURETOR ASSY.	C12	27	9								
CASE COMP., AIR CLEANER	C14	29	4								

# PART NAME INDEX

**F 2**

Part name	Address	Page	Ref.	Part name	Address	Page	Ref.	Part name	Address	Page	Ref.
[ M ]				PROTECTOR, CONTROL .....	D5	36	11	SPRING, FRICTION .....	C10	25	7
MARK, EMBLEM .....	D6	37	1	PULLEY COMP., STARTER .....	D1	32	3	SPRING, GOVERNOR .....	D3	34	4
MARK, FUEL COCK CAUTION .....	D6	37	5		D2	33	2		D5	36	4
MARK, MANUFACTURER .....	D6	37	2	[ R ]				SPRING, LEVER .....	D3	34	9
MARK, OPERATOR CAUTION .....	D6	37	3						D5	36	8
			4	RATCHET, STARTER .....	C10	25	4	SPRING, RECOIL STARTER .....	C10	25	8
MUFFLER COMP. ....	C15	30	3	REEL, RECOIL STARTER .....	C10	25	3	SPRING, RETURN .....	C10	25	9
[ N ]				RETAINER COMP., BALL .....	D7	38	7	SPRING, SWITCH CONTROL .....	D2	33	7
NOZZLE, MAIN .....	C12	27	11	RETAINER, IN. VALVE SPRING .....	C7	22	11	SPRING, THROTTLE RETURN .....	D3	34	5
NUT, AIR CLEANER .....	C14	29	9	RING SET, PISTON .....	C5	20	1	SPRING, VALVE .....	C7	22	10
NUT, FLANGE, 6MM .....	C14	29	10	ROD ASSY., CONNECTING .....	C5	20	4	SPRING, WEIGHT RETURN .....	C7	22	7
	C16	31	19	ROD, CHOKE .....	D3	34	8	STARTER ASSY., RECOIL .....	C10	25	1
	D4	35	26		D5	36	7	STAY COMP., TANK .....	C2	17	20
	D5	36	24	ROD, GOVERNOR .....	D3	34	3	STRAINER, FUEL .....	C16	31	2
NUT, PIVOT ADJUSTING .....	C7	22	14		D5	36	3	SWITCH ASSY., ENGINE STOP .....	D2	33	6
NUT, SELF-LOCK, 6MM .....	C15	30	8	ROD, PUSH .....	C7	22	3		D3	34	14
NUT, SPECIAL, 14MM .....	D1	32	6	ROD, THROTTLE RETURN .....	D2	33	9		D5	36	13
	D2	33	16	ROPE, RECOIL STARTER .....	C10	25	12	[ T ]			
[ O ]				RUBBER B, TANK MOUNTING .....	C16	31	6	TANK COMP., FUEL .....	C16	31	4
OIL SEAL, 12X20X6.5 .....	C3	18	35	RUBBER, OIL RETURN .....	C2	17	11	TUBE, BREATHER .....	C14	29	1
OIL SEAL, 25X38X7 .....	C3	18	37	RUBBER, SUPPORTER .....	C16	31	1	TUBE, FUEL .....	C16	31	5
OIL SEAL, 25.4X40X7 .....	C3	18	38	RUBBER, TANK MOUNTING .....	C16	31	9	[ V ]			
OIL SEAL, 6X11X4 .....	C3	18	36	RUBBER, TANK SETTING .....	C16	31	3	VALVE SET, FLOAT .....	C12	27	2
O-RING, 22.1X2.2 .....	C3	18	39	[ S ]				VALVE, BREATHER .....	C2	17	9
O-RING, 25.5X3 .....	C3	18	40	SCREW SET .....	C12	27	7	VALVE, EX. ....	C7	22	9
[ P ]				SCREW SET, DRAIN .....	C12	27	6	VALVE, IN. ....	C7	22	8
PACKING, BREATHER COVER .....	C2	17	10	SCREW SET, PILOT .....	C12	27	5				
PACKING, CARBURETOR .....	C12	27	15	SCREW, PAN, 3X6 .....	C12	27	20	[ W ]			
PACKING, FUEL CAP .....	C16	31	12	SCREW, PAN, 4X8 .....	D2	33	20	WASHER, 10MM .....	D7	38	19
PACKING, FUEL COCK .....	C12	27	19		D3	34	22	WASHER, 10X21 .....	C3	18	31
PACKING, HEAD COVER .....	C1	16	7		D5	36	21	WASHER, DRAIN PLUG, 10.2MM .....	C3	18	32
PACKING, INSULATOR .....	C12	27	13	SCREW, PAN, 5X16 .....	C3	18	41	WASHER, PLAIN, 12MM .....	D2	33	21
PACKING, OIL PAN .....	C2	17	3		D3	34	23	WASHER, PLAIN, 6MM .....	C3	18	42
PACKING, PROTECTOR .....	C15	30	2	SCREW, PAN, 5X20 .....	D4	35	24		C11	26	5
PAN ASSY., OIL .....	C2	17	1	SCREW, PAN, 5X28 .....	D4	35	25	WASHER, TANK MOUNTING .....	C16	31	18
			2	SCREW, RECESSED, 5X28 .....	D3	34	20	WASHER, THRUST .....	D7	38	20
PIN, LOCK, 2.0 .....	C3	18	34		D5	36	19	WASHER, THRUST, 12MM .....	C3	18	30
PIN, LOCK, 8MM .....	C3	18	43	SCREW, SETTING .....	C10	25	13	WASHER, THRUST, 25.6MM .....	C6	21	12
PIN, PISTON .....	C5	20	3	SCREW, THROTTLE STOP .....	C12	27	10	WASHER, THRUST, 6MM .....	C3	18	29
PISTON .....	C5	20	2	SEAL, VALVE STEM .....	C7	22	1	WRENCH, BOX .....	D6	37	6
PIVOT, ROCKER ARM .....	C7	22	6	SHAFT, DRIVE .....	C2	17	21				
PLATE ASSY., BALL CONTROL .....	D7	38	5	SHAFT, GOVERNOR ARM .....	C2	17	18				
PLATE A, GUIDE .....	C2	17	6	SHAFT, GOVERNOR HOLDER .....	C2	17	15				
PLATE COMP., BALL CONTROL .....	D7	38	12	SLIDER, GOVERNOR .....	C2	17	17				
PLATE, FRICTION .....	C10	25	5	SPACER COMP., CARBURETOR .....	C12	27	14				
PLATE, GOVERNOR SHAFT HOLDER .....	C2	17	16	SPONGE, FUEL CAP BREATHER .....	C16	31	11				
PLATE, GUIDE .....	C2	17	5	SPRING, BRAKE .....	D2	33	10				
PLATE, LEVER SETTING .....	C12	27	17	SPRING, BRAKE HOLDER .....	D7	38	10				
PLATE, PUSH ROD GUIDE .....	C7	22	12	SPRING, BRAKE RETURN .....	D2	33	11				
PLUG, SPARK .....	C1	16	14	SPRING, CLUTCH .....	D7	38	15				
PROTECTOR COMP., MUFFLER .....	C15	30	4	SPRING, CLUTCH RETURN .....	D7	38	14				
PROTECTOR, CONTROL .....	D3	34	12	SPRING, COCK LEVER .....	C12	27	18				
				SPRING, CONTROL ADJUSTING .....	D3	34	11				
					D5	36	10				

4