

GXV160H2

FOREWORD INDEX

1

ENGINE GROUP

2

PART NUMBER INDEX

3

PART NAME INDEX

4



Instruction for use of parts catalogue

- This parts catalogue has been created as of August 10, 2003.
 - Since this date, the sales practice for repair parts may have been changed or the parts may have been eliminated (listed for those not for sale).
 - The modified information is reflected on the latest Electronic Parts Catalogue (EPC).
Also, refer to the parts catalogue news for any change.
 - See the parts catalogue news for any revision that is made after August 10, 2003.
- Always specify the part number when ordering a part.
 - Check the model, type, serial numbers, color, maker, and the size as needed before ordering a part.
 - Note that the illustrations (part drawings) can differ from the actual parts in shape.
They are given just to help you to refer to the parts.
- When modifications or additions to this parts catalogue are made, a revised edition will be issued at an appropriate time, with successively progressing revision numbers on the cover. We recommend obtaining such revisions in order to keep your parts catalogue up-to-date at all times. To check whether a parts catalogue revision has been issued, please contact your Honda distributor.

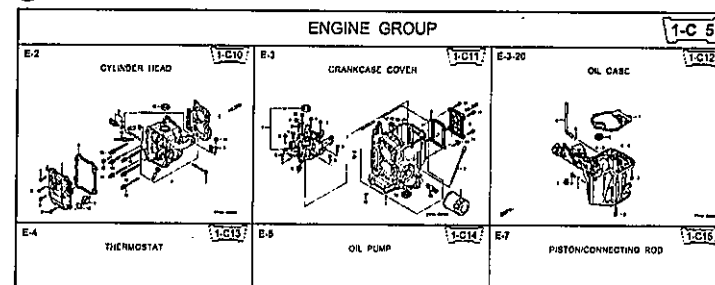
Initial version issue date August 10, 2003
Honda Motor Co., Ltd.

CONTENTS

	Page	Address No.
• How to refer to the part information	2	B 2 1
• Part catalogue structure	3	B 3
• When the parts were revised	4	B 4
• Abbreviations used in the parts catalogue	4	B 4
• How to check the part block and serial numbers	5	B 5
• Models, parts catalogue codes and applicable serial numbers	6	B 6
• Features of each type	7	B 7
• Fuel hose, general purpose hoses and vinyl hose	8	B 8
• How to use the flat rate time (F.R.T.)	9	B 9
• Illustrated index	11	B11
• ENGINE GROUP	13	C 1 2
• PART NO. INDEX	32	E 1 3
• PART NAME INDEX	34	F 1 4

How to refer to the part information

A Reference with "Illustrated index"



B Reference with "Part number index"

PART NO. INDEX					
Part Number	Address	Page	Ref.	Part Number	Address
06000				15212-ZW9-000	1-C14 3C
06316-ZW9-000	1-69	88	1	15220-ZW9-003	1-C14 3C
11000				15332-ZW9-000	1-E8 55
11300-ZW9-405	1-C11	27	1	15332-ZW9-000	1-E11 56
11300-ZW9-406	1-C11	27	1	15400-PF8-004	1-C11 27
11340-ZW9-000	1-C11	27	1	15422-ZW9-000	1-C14 3C
11342-ZW9-000	1-C11	27	2	15473-881-000	1-C14 3C
11381-ZW9-003	1-C12	28	1	15474-ZW9-000	1-C14 3C
				15611-921-000	1-C10 26
				15655-ZW9-000	1-C11 27
12000				16000	
12000-ZW9-405ZA	1-C11	27	4	16010-ZV4-005	1-D4 3C
12155-ZV4-000	1-C13	29	1	16011-ZV4-005	1-D4 3C
12166-ZW9-000	1-C10	26	1	16013-ZW9-003	1-D4 3C
12209-084-681	1-C16	32	1	16016-ZW9-003	1-D4 3C
12210-ZW9-405ZA	1-C10	26	2	16016-ZW9-721	1-D4 3C
12216-ZE2-300	1-E8	58	1	16023-ZW9-003	1-D4 3C
	1-E11	58	1	16024-ZV4-650	1-D4 3C
				16028-ZV4-650	1-D4 3C

C Reference with "Part name index"

PART NAME INDEX			
Partname	Address	Page	Ref.
[A]			
ABSORBER, FUEL	1-E15	62	5
ARMATURE COMP.	1-B11	43	7
ARM COMP., LINK JOINT	1-G6	85	18
ARM COMP., SHIFT LINK	1-G6	85	14
ARM COMP., TILT	1-F15	79	20
ARM, FUEL PUMP ROCKER	1-C16	32	4
ARM, REVERSE LOCK	1-F15	79	18
ARM, SHIFT LINK	1-F11	74	7
ARM, STOPPER	1-D1	33	12
ARM, THROTTLE REMOTE	1-F11	74	6
ARM, VALVE ROCKER	1-C16	32	3
[B]			
BAG, TOOL, 160MM	1-G5	84	10
BAND, B1, WIRE	1-G6	86	37
BAND, CORD	1-F6	69	1
BAND, TUBE CLIP, 11MM	1-E15	63	20
BAND, TUBE CLIP, 12.5MM	1-E15	63	19

Address No. 1-C10

Block No. E-2 CYLINDER HEAD

Ref No.

Service Item F.R.T.

O-RING, 26X2.7	0.1
PLUG, SPARK	0.2
O-RING, 9.5X1.5	0.2
SENSOR ASSY., WATER	0.3
COVER COMP., HEAD	0.3
PACKING, HEAD COVER	1.8
GASKET, CYLINDER HEAD	2.4
OIL SEAL, 20X32X6	3.1
HEAD COMP., CYLINDER	3.1

2000.09.20 E

Page No.

Part catalogue structure

E-2 CYLINDER HEAD 1-C10

Service Item F.R.T.

O-RING, 20X2.7	0.1
PLUG, SPARK	0.2
O-RING, 9.5X1.5	0.3
SENSOR ASSY., WATER	0.3
COVER COMP., HEAD	1.8
PACKING, HEAD COVER	2.4
GASKET, CYLINDER HEAD	3.1
OIL SEAL, 20X32X5	
HEAD COMP., CYLINDER	

Ref. No. Part No. Description Reqd. QTY Serial No. Parts catalogue code

Ref. No.	Part No.	Description	Reqd. QTY						Serial No.	Parts catalogue code
			BF	BFP	BF	BFP	BF	BFP		
1	12166-ZW9-000	STOPPER, ENGINE SIDE	2	2	2	2	2	2		
2	12210-ZW9-000ZA	HEAD COMP., CYLINDER	1	1	1	1	1	1		
3	12251-ZW9-003	GASKET, CYLINDER HEAD	1	1	1	1	1	1		
4	12310-ZW9-000	COVER COMP., HEAD	1	1	1	1	1	1		
5	12312-ZW9-000	PACKING, HEAD COVER	1	1	1	1	1	1		
6	15611-921-000	CAP, OIL	1	1	1	1	1	1		
		(NO GAUGE)								
7	16517-ZW9-000	HOLDER, CABLE	1	1	1	1	1	1		
	16517-ZW9-010		1	1	1	1	1	1		

Serial No. 1001800 LHC,LHD

E-14-10 THROTTLE ROD 1-C10

Service Item F.R.T.

CAM, THROTTLE	0.2
(INC. RELATIVE PART)	
LINKAGE, PIVOT	0.3
ROD COMP., THROTTLE	
DIAPHRAGM ASSY.	

① Address number

- Address No. is provided (in place of the page No.) to help you refer to the part with the part No. or part name.

② Block title ③ Block number

④ Service item/Flat rate time

⑤ Reference number

- Title number marked with the parenthesis or parentheses indicates that it continues from the previous page.

⑥ Part number ⑦ Honda color code

⑧ Description

⑨ Assemblies

- Sections framed with broken lines in the exploded view drawings are available as complete assemblies. (Their individual parts can also be obtained.)

⑩ Color description

⑪ Note

- Notes are shown with the parentheses in the part name column.

⑫ Required quantity

- Required QTY shown in the parenthesis or parentheses indicates the optional part.
- Required QTY marked with "N" Indicates the optional part that should be selected as needed.
- Required QTY indicates the number of the part used in the block.

⑬ Serial number

⑭ Type

- When the type column is blank, it indicates that the part is applicable to all types.
- As the type of the actual unit may differ from the "parts catalogue, type" please refer to "Models, types and applicable serial numbers" for confirmation.

⑮

- Parts enclosed within a dotted line are covered in a different block.

⑯

- A hollow arrow ↖ indicates the block No. for the parts enclosed within a dotted line .

⑰

- A solid arrow → indicates the block No. the part in question is connected to.

When the parts were revised



Be sure to check the serial number!!



Ref. No.	Part No.	Description	Reqd. QTY						Serial No.
			BF	BFP	DF	BFP	DF	BFP	
1	12166-ZW9-000	STOPPER, ENGINE SIDE	2	2	2	2	2	2	
2	12210-ZW9-000ZA	HEAD COMP., CYLINDER							
3	12251-ZW9-003	*NH8* DARK GRAY	1	1	1	1	1	1	
4	12310-ZW9-000	GASKET, CYLINDER HEAD	1	1	1	1	1	1	
5	12312-ZW9-000	COVER COMP., HEAD	1	1	1	1	1	1	
6	15611-921-000	PACKING, HEAD COVER	1	1	1	1	1	1	
7	16617-ZW9-000	CAP, OIL	1	1	1	1	1	1	
		(NO GAUGE)							
	16617-ZW9-000	HOLDER, CABLE (###)	1	1	1	1	1	1	
	16617-ZW9-01D		1	1	1	1	1	1	

The number has been used from the initial model without revision.

When shown at the left side, it is applicable to the models of No.1001801 and the subsequent numbers.

When shown at the right side, it is applicable to the models it is applicable to the models up to No.1001800.

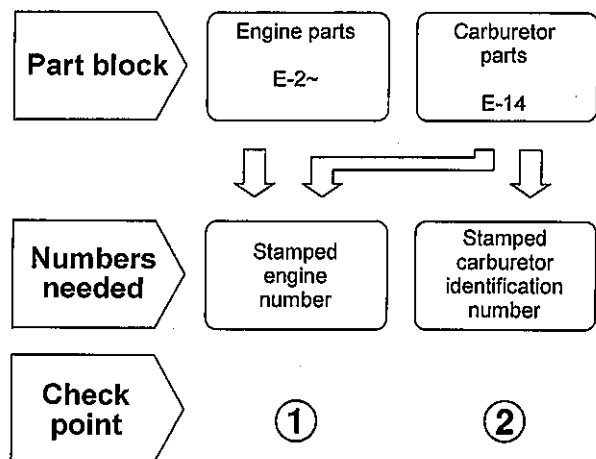
The parts listed with "###" at the end of the parts name have limited supply period (parts not for sale).

Abbreviations used in the parts catalogue

The following abbreviations are used in the parts name column.

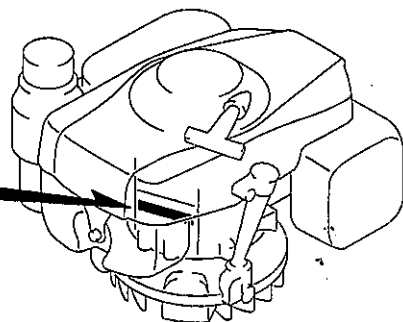
A Ampere	FR. Front
A.C. Alternating current	IN. Inlet
ASSY. Assembly	L (100L) .Link (100 Links)
AT. Automatic transmission	L. Left
C.D.I. Capacitive discharge ignition	MM Millimeter
COMP. ... Complete	MT. Manual Transmission
D.C. Direct current	P.T.O. Power take off
EX. Exhaust	R. Right
G.F.C.I ... Ground fault circuit interruptor	RR. Rear
HEX. Hexagonal	STD. Standard
H.S.T. Hydrostatic transmission	T (22T) ... Tooth (22 Teeth)
	V Volt
	W Watt

How to check the part block and serial numbers



①

ENGINE SERIAL NUMBER

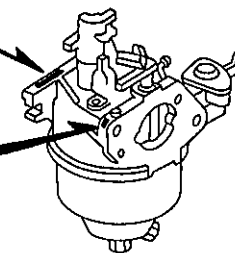


DZ1V-A

②-③

CARBURETOR
IDENTIFICATION NUMBER

②-④

CARBURETOR
IDENTIFICATION NUMBER

DZ1V-B

Models, parts catalogue codes and applicable serial numbers

- Models, parts catalogue codes and applicable serial Nos. given in this parts catalogue can be identified as follows.

Model	Type	Parts catalogue type	Applicable engine serial No.	Applicable carburetor identification No.
GXV160H2	A14	A14	GJAAH-1000001~	BE66J A
	C12	C12		
	N1	N1		
	N1F	N1F		
	N4	N4		
	N5	N5		
	N6	N6		
	N6S	N6S		
	SFC	SFC		
	SFL	SFL		
	SFL1	SFL1		
	SFY1	SFY1		

* Of carburetor identification numbers, only the portions underlined in the example below are used for registration.

BE 66J A KC ナ
 (A) (B)

Features of each type

- See the following table for the features of each type.

Specifications		Model	GXV160H2											
		Type	A14	C12	N1	N1F	N4	N5	N6	N6S	SFC	SFL	SFL1	SFY1
Crankshaft	22.2mmØ Straight	●		●	●									
	25.4mmØ Straight (Flat key-way)					●								
	25.4mmØ Straight						●							
	22mmØ Straight							●						
	20mmØ Steped thread		●						●	●	●	●	●	
Flywheel brake		●	●							●				

Fuel hose, general purpose hoses and vinyl hose

- The standard part fuel hose, general purpose hose and vinyl hose may be substituted by the coiled bulk part.
- When ordering the standard part fuel hose, general purpose hose and vinyl hose use the bulk part number written in the parts catalog in brackets () underneath the part name.
- When exchanging the hose, cut and use at the specified length as mentioned in the part name.
(For the method of cutting the bulk part, and method of filling out orders etc., please refer to the instructions issued with the bulk part.)

Bulk part number of fuel hose, general purpose hose and vinyl hose.

Example: 9 5 0 0 1 - 7 5 0 0 1 - 5 0 M

Bulk part number:

Refers to the bulk part.

Marking code (fuel hose and general purpose hose)

Change code (Vinyl hose)

Indicates number mark or change sequence, however, the code for the bulk part must be strictly 0 (zero).

Types of code:

- Fuel hose
 - 2: Red outside braid (3 mm inside dia. only)
 - 5: Black inside braid
 - 3: Red (3 mm inside dia. only)
 - 4: Ash gray with red stripe (3 mm inside dia. only)
 - 6: Black

- General hose
 - 1: Ash gray
 - 2: Ash gray
 - 3: Black
 - 5: Black

- Vinyl hose
 - 1: Clear
 - 2: Black
 - 3: Light red
 - 6: Light red
 - 7: Pale black

Lengths:

001: 1 m (standard)

003: 3 m

008: 8 m

Application or specification of some parts is not settled.

I.D code: (fuel hose and general purpose hose)

30: 3.0 mm

35: 3.5 mm

45: 4.5 mm

50: 5.0 mm

55: 5.3 mm, 5.5 mm

65: 6.5 mm

70: 7.0 mm

75: 7.3 mm, 7.5 mm

80: 8.0 mm

11: 11 mm

91: 12 (outside dia. 15) mm

92: 12 (outside dia. 16) mm

12: 12 (outside dia. 17) mm

14: 14 mm

17: 17 mm

ID./OD. code: (vinyl hose)

01: ID. 2.9, OD. 6.8 mm

03: ID. 3.0, OD. 6.0 mm

05: ID. 3.5, OD. 6.5 mm

07: ID. 4.0, OD. 7.0 mm

08: ID. 4.5, OD. 6.5 mm

09: ID. 4.5, OD. 8.0 mm

12: ID. 5.0, OD. 7.0 mm

10: ID. 5.0, OD. 8.0 mm

11: ID. 5.0, OD. 9.0 mm

14: ID. 6.0, OD. 9.0 mm

17: ID. 7.0, OD. 9.0 mm

19: ID. 7.0, OD. 11.0 mm

21: ID. 8.0, OD. 9.0 mm

23: ID. 8.0, OD. 12.0 mm

25: ID. 9.0, OD. 11.0 mm

27: ID. 9.0, OD. 13.0 mm

33: ID. 10.0, OD. 14.0 mm

36: ID. 11.0, OD. 13.0 mm

37: ID. 11.0, OD. 15.0 mm

38: ID. 12.0, OD. 13.0 mm

39: ID. 12.0, OD. 14.0 mm

40: ID. 12.0, OD. 16.0 mm

43: ID. 13.0, OD. 15.0 mm

45: ID. 14.0, OD. 18.0 mm

50: ID. 16.0, OD. 19.0 mm

55: ID. 17.5, OD. 20.5 mm

60: ID. 22.0, OD. 27.0 mm

Hose type:

1: Fuel hose

3: Vinyl hose

5: General hose

⊙ **CAUTION:** It is DANGEROUS to confuse the fuel hose with the general purpose hose or vinyl hose.

Never use a general purpose hose or vinyl hose in place of a fuel hose or vice versa. Always use the correct bulk part in the parts catalogue, according to the service manual or the instructions issued with the bulk part.

How to use the flat rate time (F.R.T.)

This F.R.T. (Flat Rate Time) is used to determine the standard labor time allowed for replacement of parts covered by the warranty during the period the warranty is in effect. The F.R.T. for those parts which are not listed herein should be determined from the operation closely related to the replacement of that part.

1. The F.R.T. is based on the following servicing conditions

- A liberal allowance is added to the net servicing time.
- Standard times specified are based on the condition that the necessary servicing tools listed in the service manual which describes the Honda service policy are available close at hand and the work performed by a mechanic with normal skill.
- Time required for inspection and operational test following the servicing is included in the F.R.T.
- The F.R.T. for "*" marked parts are same as the F.R.T. for the representative part above.
- The F.R.T. shown with (*) includes engine removal and installation.

2. Method of computing

The job times are listed in tenth of an hour to simplify computation.

(Example) 0.3 = 18 minutes
5.6 = 5 hours and 36 minutes

CONVERSION CHART			
Hours	Minutes	Hours	Minutes
0.1	6	0.6	36
0.2	12	0.7	42
0.3	18	0.8	48
0.4	24	0.9	54
0.5	30	1.0	60

3. Computing the F.R.T.

The following are only examples and do not reflect the actual F.R.T. for this product.

When several jobs are performed at the same time, make the calculation in the following manner.

a. Jobs of non duplicated nature

The F.R.T. for the job is obtained by totalling the F.R.T. for each part replaced.

(Example) Replacement of head cover gasket and oil filter.

Service item	F.R.T.
Packing, cylinder head cover	0.5
Cartridge, oil filter	0.5

The F.R.T. for the job is: $0.5 + 0.5 = 1.0$

b. Jobs of duplicated nature

Take the F.R.T. for the last part to be replaced.

(Example) Replacement of piston and cylinder head gasket.

Service item	F.R.T.
Gasket comp., cylinder head	3.0
Piston	*5.0

The F.R.T. for the job is: 5.0

c. Jobs of partially related nature

Total up the F.R.T. for all of the parts replaced and then subtract the F.R.T. for the duplicated operation (i.e., cylinder head gasket service).

(Example) Replacement of valve and cylinder head.

Service item	F.R.T.
Valve	*3.0
Head assy., cylinder	*4.0
Gasket comp., cylinder head	*2.5

The F.R.T. for the job is: $(3.0 + 4.0) - 2.5 = 4.5$

- The F.R.T. shown with (*) includes engine removal and installation.
- The parts, having the same number of man-hour, are identified by a mark "*", and classified under the title of their representative work.

4. Adjustment, cleaning

Item	Service item	F.R.T.
Adjustment	Valve clearance	0.4
	Carburetor	0.2
	Governor	0.2
Cleaning	Carburetor	0.6
	Air cleaner element	0.2
	Arrester spark	0.2
	Spark plug	0.1

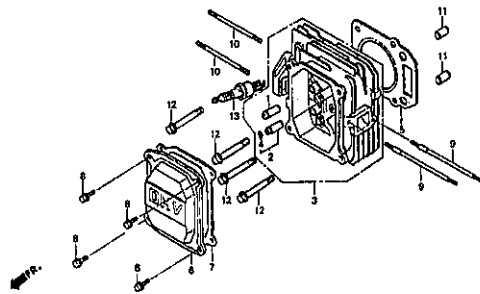
ENGINE GROUP

B11

E-2

CYLINDER HEAD

C 1

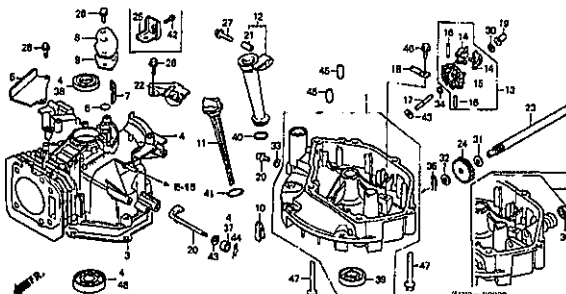


ZIVO E0900

E-3

CYLINDER BARREL

C 2

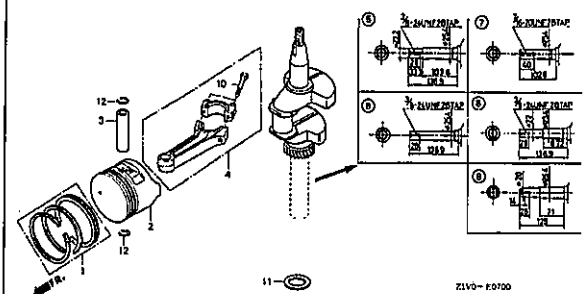


ZIVO-PENAR

E-7

CRANKSHAFT/PISTON

C 4

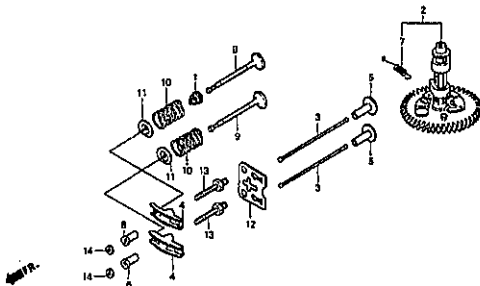


ZIVO-E0700

E-9

CAMSHAFT

C 6

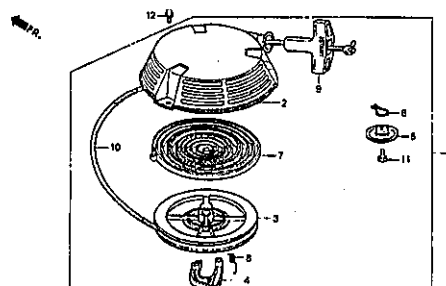


ZIVO-E0900

E-11

RECOIL STARTER

C 7

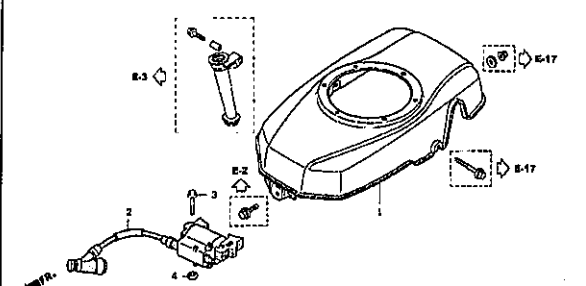


ZIVO-E1300

E-12

FAN COVER

C 8

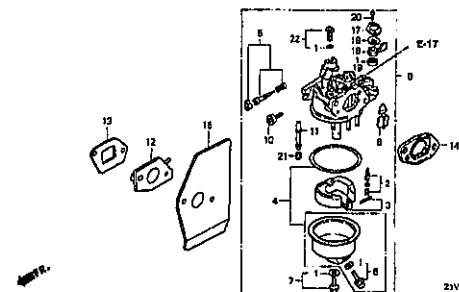


ZIVO-E1900

E-14

CARBURETOR

C 9

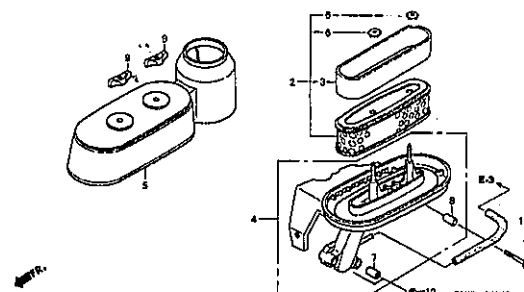


ZIVO-E1400

E-15

AIR CLEANER

C10

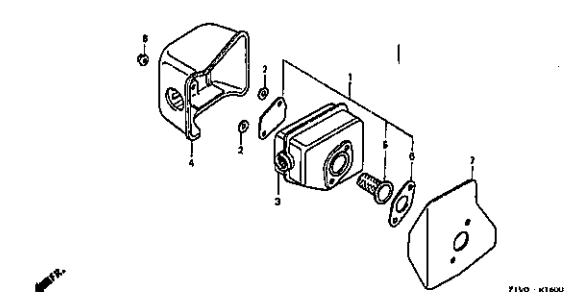


ZIVO-E1500

E-16

MUFFLER

C11



ZIVO-E1600

2

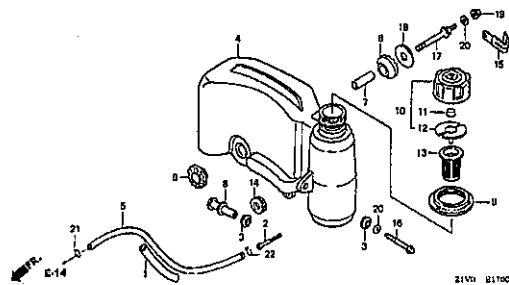
ENGINE GROUP

B12

E-17

C12

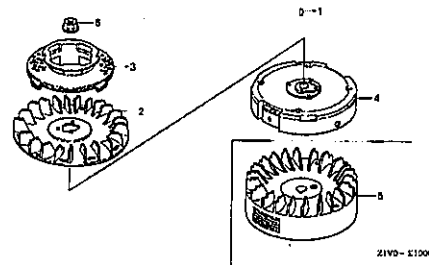
FUEL TANK



E-19

C13

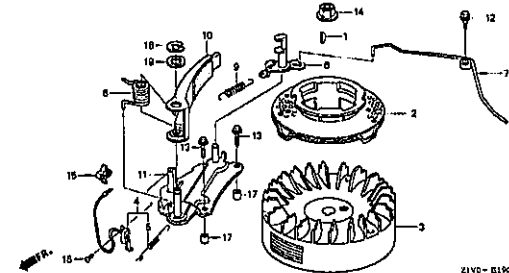
FLYWHEEL(1)



E-19-1

C14

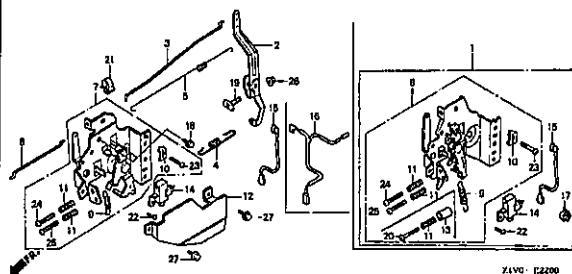
FLYWHEEL(2)



E-22

C15

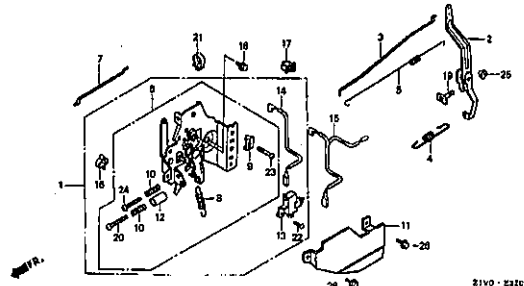
CONTROL(1)



E-22-1

D 1

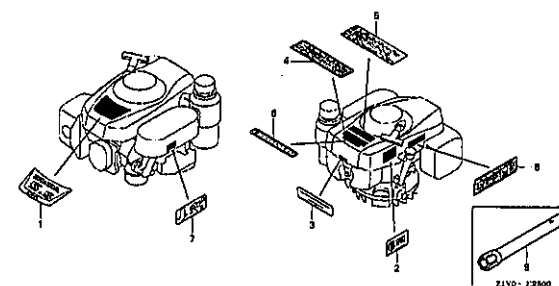
CONTROL(2)



E-28

D 2

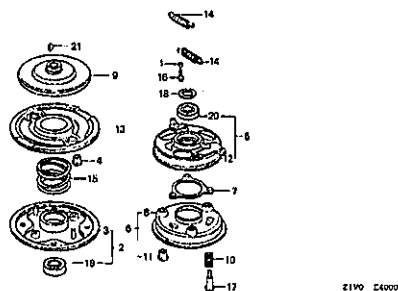
LABEL



E-40

D 3

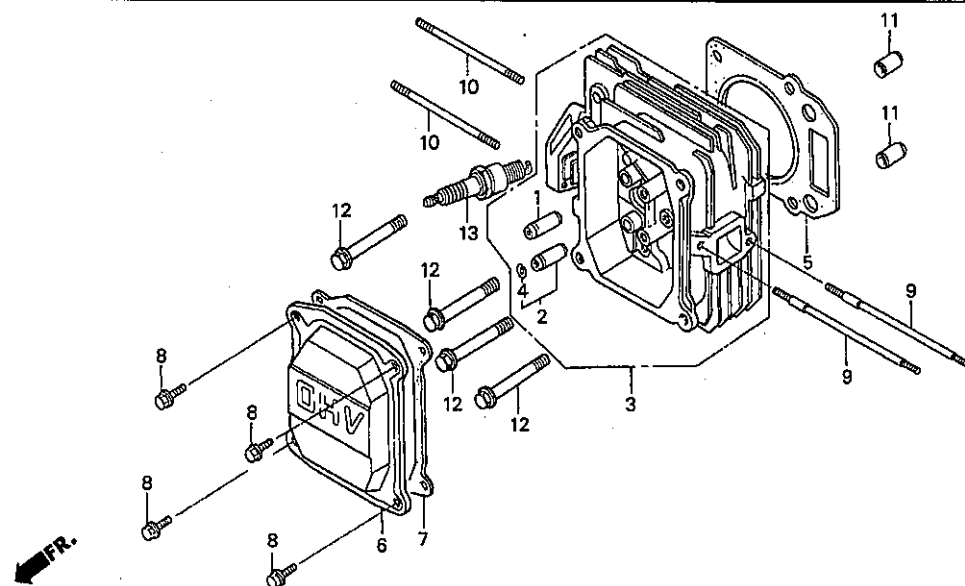
OTHER PARTS



E-2

CYLINDER HEAD

C 1



Z1V0-E0200

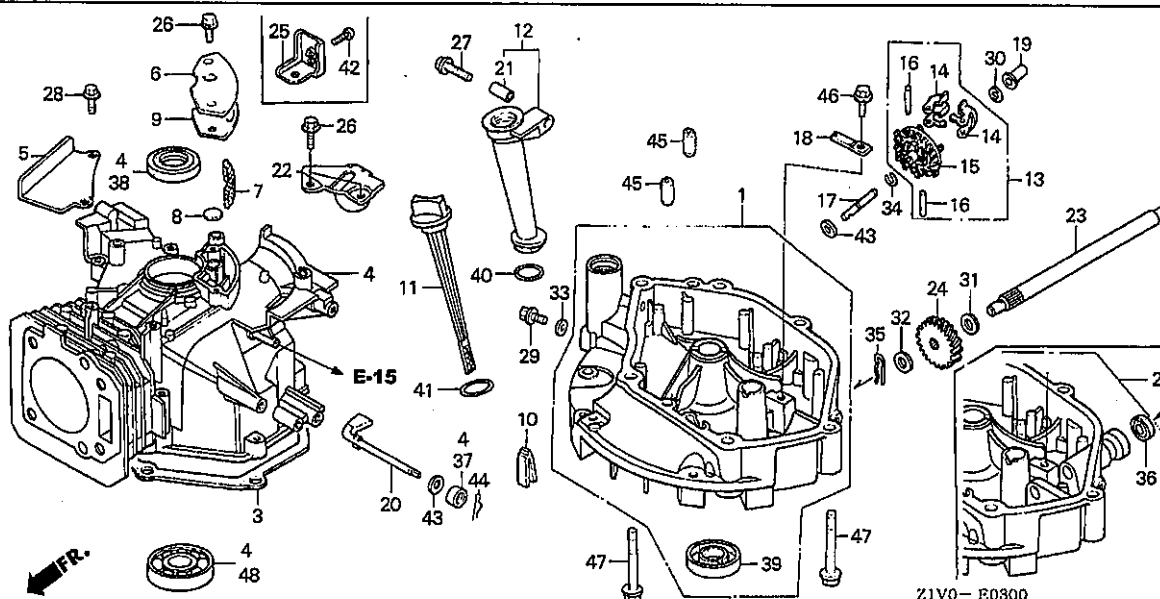
Service item	F.R.T.
COVER, HEAD	0.1
PACKING, HEAD COVER	
PLUG, SPARK	
BOLT, STUD, 6X109	0.2
(ADD 0.1 FOR EACH.)	
BOLT, STUD, 6X85	
(ADD 0.1 FOR EACH.)	
GASKET, CYLINDER HEAD	0.6
GUIDE, IN. VALVE	0.8
(ADD 0.2 FOR EACH.)	
HEAD COMP., CYLINDER	1.0

Ref. No.	Part No.	Description	Reqd. QTY	Serial No.	Parts catalogue code
			GXV 160 H2		
1	12204-ZE1-306	GUIDE, IN. VALVE (O.S.)	1		
2	12205-ZE1-315	GUIDE, EX. VALVE (O.S.)	1		
3	12210-Z1V-000	HEAD COMP., CYLINDER	1		
4	12216-ZE5-300	CLIP, VALVE GUIDE	1		
5	12251-ZE7-000	GASKET, CYLINDER HEAD	1		
6	12311-ZG9-000	COVER, HEAD	1		
7	12391-ZE7-M10	PACKING, HEAD COVER	1		
8	90013-883-000	BOLT, FLANGE, 6X12(CT200) ...	4		
9	90043-ZE6-000	BOLT, STUD, 6X109	2		
10	90048-ZC3-000	BOLT, STUD, 6X85	2		
11	94301-10160	DOWEL PIN, 10X16	2		
12	95701-08050-00	BOLT, FLANGE, 8X50	4		
13	98079-54846	PLUG, SPARK (BPR4ES)(NGK) ...	(1)		
	98079-54855	PLUG, SPARK (W14EPR-U)(DENSO)	(1)		
	98079-55846	PLUG, SPARK (BPR5ES)(NGK) ...	1		
	98079-55855	PLUG, SPARK (W16EPR-U)(DENSO)	1		
	98079-56846	PLUG, SPARK (BPR6ES)(NGK) ...	(1)		
	98079-56855	PLUG, SPARK (W20EPR-U)(DENSO)	(1)		

E-3

CYLINDER BARREL

C 2



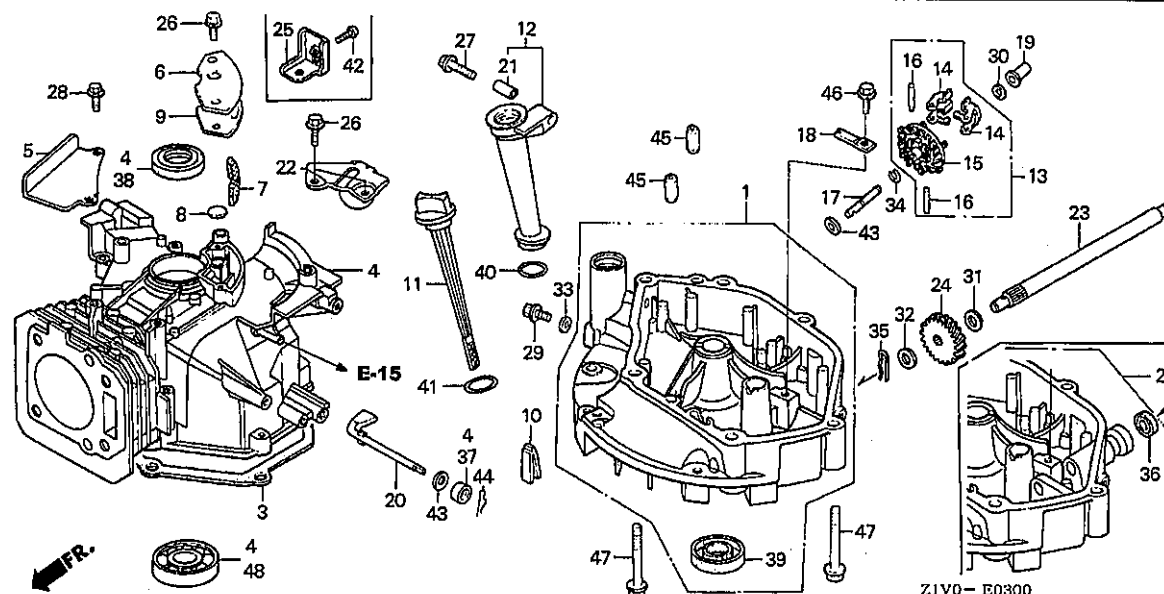
Service item	F.R.T.
EXTENSION, OIL FILLER	0.1
O-RING, 22.1X2.2	
FILTER, BREATHER	0.2
GEAR, DRIVEN	0.3
OIL SEAL, 12X20X6.5	
OIL SEAL, 25.4X40X7	
PACKING, OIL PAN	
PAN ASSY., OIL	
SHAFT, DRIVE	
SHAFT, GOVERNOR ARM	
HOLDER, GOVERNOR WEIGHT	0.4
(INC. RELATIVE PART)	
OIL SEAL, 25X38X7	1.1
BEARING, RADIAL BALL, 6205 ..	1.2
BARREL ASSY., CYLINDER	1.5

Ref. No.	Part No.	Description	Reqd. QTY	Serial No.	Parts catalogue code
			GXV 160 H2		
1	11300-Z1V-000	PAN ASSY., OIL	1	-----	A14,C12,N1,N1F,N4,N5,N6
2	11300-Z1V-800	PAN ASSY., OIL	1	-----	N6S,SFC,SFL,SFL1,SFY1
3	11381-ZE7-M10	PACKING, OIL PAN	1	-----	
4	12000-Z1V-000	BARREL ASSY., CYLINDER	1	-----	
5	12125-Z1V-000	PLATE, GUIDE	1	-----	A14,N1,N1F,N4,N5,N6,N6S,SFL,SFL1,SFY1
6	12355-Z1V-000	COVER COMP., BREATHER	1		
7	12367-883-003	FILTER, BREATHER	1		
8	12372-ZE7-000	VALVE, BREATHER	1		
9	12373-ZE7-000	PACKING, BREATHER COVER	1		
10	15335-ZE7-000	RUBBER, OIL RETURN	1		
11	15620-ZE6-810	GAUGE COMP., OIL LEVEL	1		
12	15630-ZE6-810	EXTENSION, OIL FILLER	1		
13	16510-ZE6-000	GOVERNOR ASSY.	1		
14	16511-ZE1-000	WEIGHT, GOVERNOR	2		
15	16512-ZE6-000	HOLDER, GOVERNOR WEIGHT	1		
16	16513-ZE1-000	PIN, GOVERNOR WEIGHT	2		
17	16515-ZE6-010	SHAFT, GOVERNOR HOLDER	1		
18	16525-ZE6-010	PLATE, GOVERNOR SHAFT HOLDER	1		
19	16531-Z1T-000	SLIDER, GOVERNOR	1		
20	16541-ZE7-000	SHAFT, GOVERNOR ARM	1		
21	17240-ZE6-000	COLLAR, EXTENSION	1		
22	17517-ZE7-000	STAY COMP., TANK	1		
23	23411-ZE7-000	SHAFT, DRIVE	1	-----	N6S,SFC,SFL,SFL1,SFY1
24	23421-ZE6-000	GEAR, DRIVEN (18T)	1	-----	N6S,SFC,SFL,SFL1,SFY1
25	43143-ZE7-000	BASE COMP., HOLDER	1	-----	A14,C12,SFC

E-3

CYLINDER BARREL

C 3

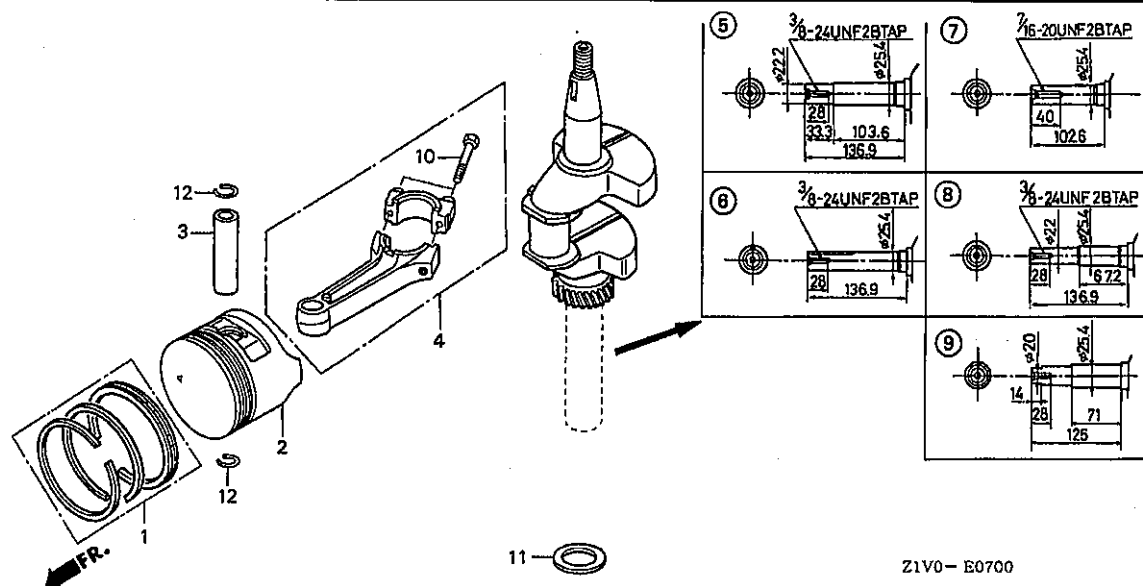


Ref. No.	Part No.	Description	Reqd. QTY	Serial No.	Parts catalogue code
			GXV 160 H2		
26	90014-952-000	BOLT, FLANGE, 6X14(CT200) ...	4		
27	90017-883-000	BOLT, FLANGE, 6X32	1		
28	90022-888-010	BOLT, FLANGE, 6X20(CT200) ...	2	-----	A14,N1,N1F,N4,N5,N6,N6S,SFL,SFL1,SFY1
29	90131-ZE1-000	BOLT, DRAIN PLUG	1		
30	90451-ZE1-000	WASHER, THRUST, 6MM	1		
31	90452-166-600	WASHER, THRUST, 12MM	1	-----	N6S,SFC,SFL,SFL1,SFY1
32	90452-187-000	WASHER, 10X21	1	-----	N6S,SFC,SFL,SFL1,SFY1
33	90601-ZE1-000	WASHER, DRAIN PLUG, 10.2MM ..	1		
34	90602-ZE1-000	CLIP, GOVERNOR HOLDER	1		
35	90701-ZE6-000	PIN, LOCK, 2.0	1	-----	N6S,SFC,SFL,SFL1,SFY1
36	91205-Z1V-003	OIL SEAL, 12X20X6.5	1	-----	N6S,SFC,SFL,SFL1,SFY1
37	91231-Z1V-003	OIL SEAL, 6X11X4	1		
38	91251-Z1V-003	OIL SEAL, 25X38X7	1		
39	91252-Z1V-003	OIL SEAL, 25.4X40X7	1		
40	91301-Z1V-003	O-RING, 22.1X2.2	1		
41	91302-Z1V-003	O-RING, 25.5X3	1		
42	93500-05016-0A	SCREW, PAN, 5X16	1	-----	A14,C12,SFC
43	94101-06800	WASHER, PLAIN, 6MM	2		
44	94251-08000	PIN, LOCK, 8MM	1		
45	94301-08140	DOWEL PIN, 8X14	2		
46	95701-06012-08	BOLT, FLANGE, 6X12	1		
47	95701-08050-00	BOLT, FLANGE, 8X50	6		
48	96100-62050-00	BEARING, RADIAL BALL, 6205 ..	1		

E-7

CRANKSHAFT/PISTON

C 4

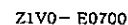


Z1V0-E0700

Service item	F.R.T.
CRANKSHAFT COMP.	1.1
ROD ASSY., CONNECTING	
PISTON	1.2
RING SET, PISTON	

Ref. No.	Part No.	Description	Reqd. QTY GXV 160 H2	Serial No.	Parts catalogue code
1	13010-ZL0-003	RING SET, PISTON (STD.) (TEIKOKU)	1		
	13010-ZL0-004	RING SET, PISTON (STD.) (NIPPON)	1		
	13011-ZL0-003	RING SET, PISTON (0.25) (TEIKOKU)	(1)		
	13011-ZL0-004	RING SET, PISTON (0.25) (NIPPON)	(1)		
	13012-ZL0-003	RING SET, PISTON (0.50) (TEIKOKU)	(1)		
	13012-ZL0-004	RING SET, PISTON (0.50) (NIPPON)	(1)		
	13013-ZL0-003	RING SET, PISTON (0.75) (TEIKOKU)	(1)		
	13013-ZL0-004	RING SET, PISTON (0.75) (NIPPON)	(1)		
2	13101-ZH8-010	PISTON (STD.)	1		
	13101-Z1T-000	PISTON (STD.)	1		
	13102-ZE7-020	PISTON (0.25)	(1)		
	13103-ZE7-020	PISTON (0.50)	(1)		
	13104-ZE7-020	PISTON (0.75)	(1)		
3	13111-Z1T-000	PIN, PISTON	1		
4	13200-Z1V-000	ROD ASSY., CONNECTING	1		
5	13310-ZE7-010	CRANKSHAFT COMP.	1	-----	A14,N1,N1F
6	13310-ZE7-641	CRANKSHAFT COMP.	1	-----	N4
7	13310-ZE7-661	CRANKSHAFT COMP.	1	-----	N5
8	13310-ZE7-681	CRANKSHAFT COMP.	1	-----	N6
9	13310-ZE7-771	CRANKSHAFT COMP.	1	-----	C12,N6S,SFC,SFL,SFL1,SFY1

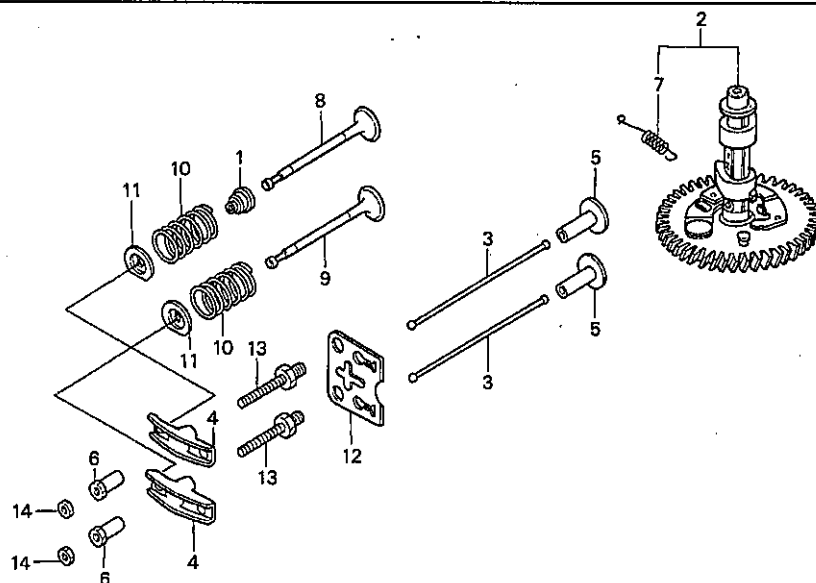
C 5

17

E-9

CAMSHAFT

C 6



Z1V0- E0900

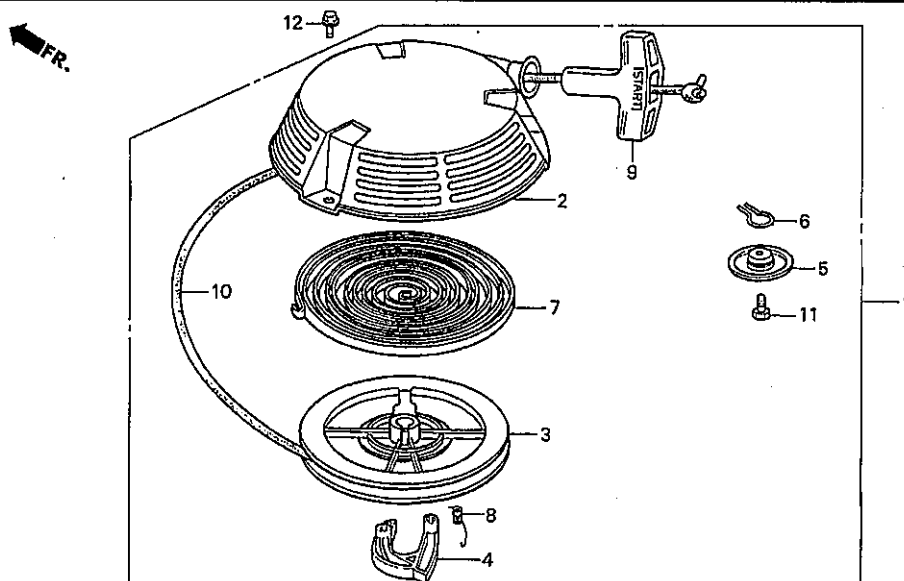
Service item	F.R.T.
ARM, VALVE ROCKER	0.2
(ADD 0.1 FOR EACH.)	
.PIVOT, ROCKER ARM	
.ROD, PUSH	
BOLT, PIVOT, 8MM	0.3
CAMSHAFT ASSY.	0.6
.LIFTER, VALVE	
SEAL, VALVE STEM	0.7
.VALVE	
(ADD 0.1 FOR EACH.)	

Ref. No.	Part No.	Description	Reqd. QTY	Serial No.	Parts catalogue code
			GXV 160 H2		
1	12209-ZE6-003	SEAL, VALVE STEM	1		
2	14100-ZE7-000	CAMSHAFT ASSY.	1	-----	A14,C12,N1,N1F,N4,N5,N6
	14100-ZE7-770	1	-----	N6S,SFC,SFL,SFL1,SFY1
3	14410-ZE1-010	ROD, PUSH	2		
4	14431-ZE1-000	ARM, VALVE ROCKER	2		
5	14441-ZE1-010	LIFTER, VALVE	2		
6	14451-ZE1-013	PIVOT, ROCKER ARM	2		
7	14568-ZE1-000	SPRING, WEIGHT RETURN	1		
8	14711-ZF1-000	VALVE, IN.	1		
9	14721-ZE7-000	VALVE, EX.	1		
10	14751-ZE1-000	SPRING, VALVE	2		
11	14771-ZE1-000	RETAINER, IN. VALVE SPRING ..	2		
12	14791-ZE1-010	PLATE, PUSH ROD GUIDE	1		
13	90012-ZE0-010	BOLT, PIVOT, 8MM	2		
14	90206-ZE1-000	NUT, PIVOT ADJUSTING	2		

E-11

RECOIL STARTER

C 7



Z1V0- E1100

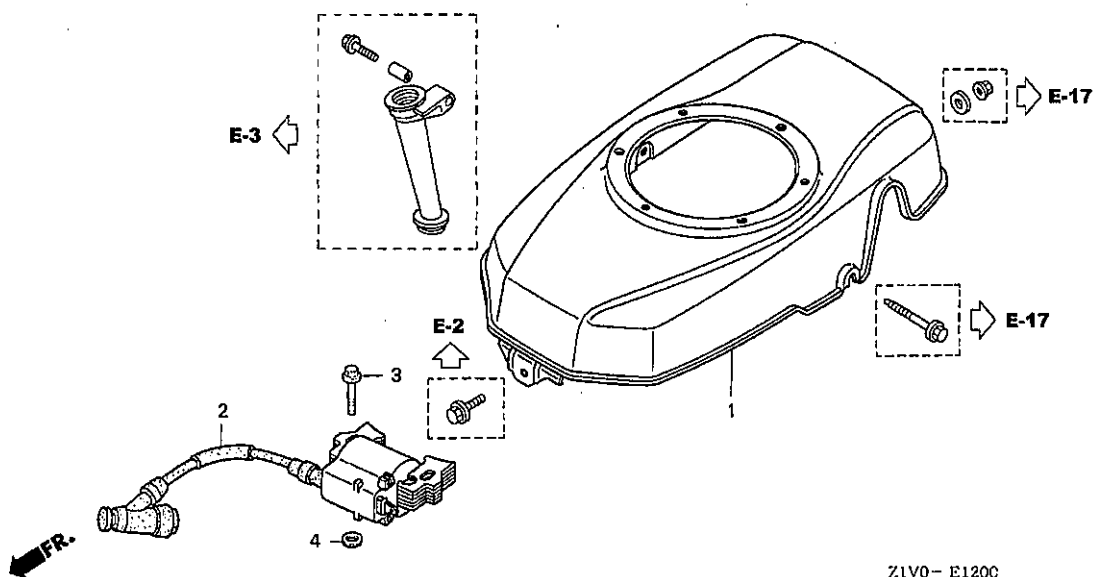
Service item	F.R.T.
STARTER ASSY., RECOIL	0.1
RATCHET, STARTER	0.2
SPRING, RETURN	
PULLEY, RECOIL STARTER	0.3
ROPE, RECOIL STARTER	
SPRING, RECOIL STARTER	

Ref. No.	Part No.	Description	Reqd. QTY	Serial No.	Parts catalogue code
			GXV 160 H2		
1	28400-ZE7-V11ZC	STARTER ASSY., RECOIL (LONG)	1	-----	N1F
		R280.....POWER RED			
	28400-ZE7-003ZC	STARTER ASSY., RECOIL	1	-----	A14,C12,N1,N4,N5,N6,N6S,SFC,SFL,SFL1,SFY1
		R280.....POWER RED			
2	28410-ZE7-003ZD	CASE COMP., RECOIL STARTER	1	-----	
		R280.....POWER RED			
3	28420-ZE7-003	PULLEY, RECOIL STARTER	1	-----	
4	28422-896-010	RATCHET, STARTER	1	-----	
5	28431-896-000	PLATE, FRICTION	1	-----	
6	28441-896-000	SPRING, FRICTION	1	-----	
7	28442-896-700	SPRING, RECOIL STARTER	1	-----	
8	28443-896-000	SPRING, RETURN	1	-----	
9	28461-ZE1-003	NOB, RECOIL STARTER	1	-----	
10	28462-ZA7-003	ROPE, RECOIL STARTER	1	-----	A14,C12,N1,N4,N5,N6,N6S,SFC,SFL,SFL1,SFY1
	28462-ZE7-V11	1	-----	N1F
11	92101-06012-0H	BOLT, HEX., 6X12	1	-----	
12	95701-06008-00	BOLT, FLANGE, 6X8	3	-----	

E-12

FAN COVER

C 8



Service item	F.R.T.
CAP ASSY., NOISE SUPPRESSOR ..	0.1
COIL ASSY., IGNITION	0.2
COVER COMP., FAN	

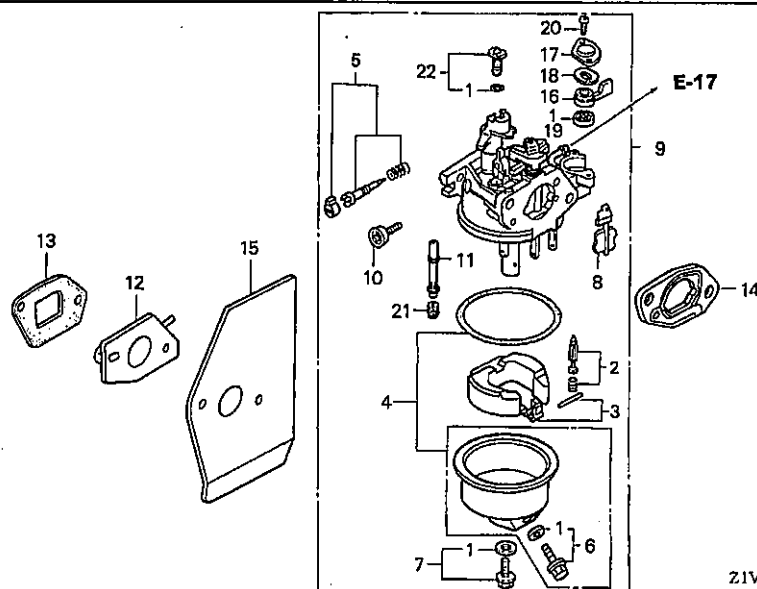
Ref. No.	Part No.	Description	Reqd. QTY GXV 160 H2	Serial No.	Parts catalogue code
1	19610-Z1V-000ZA	COVER COMP., FAN *R280*.....POWER RED	1		
2	30500-Z1V-003	COIL ASSY., IGNITION	1		
3	30700-Z1V-003	CAP ASSY., NOISE SUPPRESSOR .	1		
4	90015-883-000	BOLT, FLANGE, 6X28	2		
5	90581-GB5-610	WASHER, PLAIN, 6MM	2		

E-14

CARBURETOR

C 9

FR.



Z1V0-E1400

Service item

F.R.T.

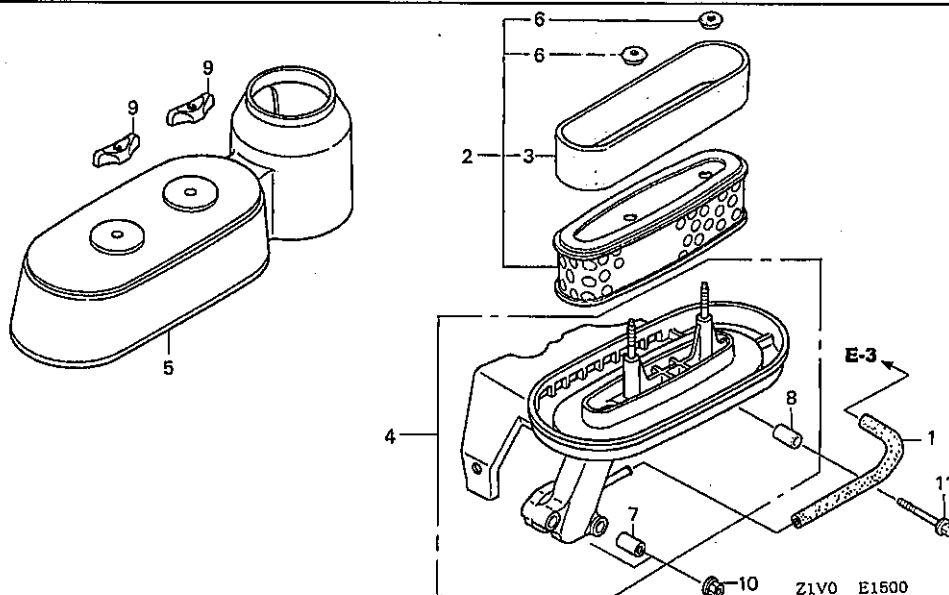
CARBURETOR ASSY.	0.2
.INSULATOR, CARBURETOR	
.PACKING, CARBURETOR	
.PACKING, FUEL COCK	
.PACKING, INSULATOR	
.SCREW SET, PILOT	
FLOAT SET	0.3
.GASKET SET	
.JET, MAIN,	
.VALVE SET, FLOAT	

Ref. No.	Part No.	Description	Reqd. QTY	Serial No.	Parts catalogue code
			GXV 160 H2		
1	16010-ZE0-025	GASKET SET	1		
2	16011-ZE0-005	VALVE SET, FLOAT	1		
3	16013-ZE0-005	FLOAT SET	1		
4	16015-ZE0-831	CHAMBER SET, FLOAT	1		
5	16016-ZH7-W01	SCREW SET, PILOT	1		
6	16024-ZE1-811	SCREW SET, DRAIN	1		
7	16028-ZE0-005	SCREW SET	1		
8	16045-ZE7-005	CHOKE SET	1		
9	16100-Z1V-003	CARBURETOR ASSY. (BE66J A) ..	1		
10	16124-ZE0-005	SCREW, THROTTLE STOP	1		
11	16166-Z1V-003	NOZZLE, MAIN	1		
12	16211-ZE7-000	INSULATOR, CARBURETOR	1		
13	16212-ZE7-M10	PACKING, INSULATOR	1		
14	16220-ZE6-010	SPACER COMP., CARBURETOR	1		
15	16221-ZE7-M11	PACKING, CARBURETOR	1		
16	16953-ZE1-812	LEVER, COCK	1		
17	16954-ZE1-812	PLATE, LEVER SETTING	1		
18	16956-ZE1-811	SPRING, COCK LEVER	1		
19	16957-ZE1-812	PACKING, FUEL COCK	1		
20	93500-03006-1H	SCREW, PAN, 3X6	2		
21	99101-ZH8-0600	JET, MAIN, #60	(1)		
	99101-ZH8-0620	JET, MAIN, #62	(1)		
	99101-ZH8-0650	JET, MAIN, #65	1		
22	99204-ZE0-0350	JET SET, PILOT, #35	1		

E-15

AIR CLEANER

C10



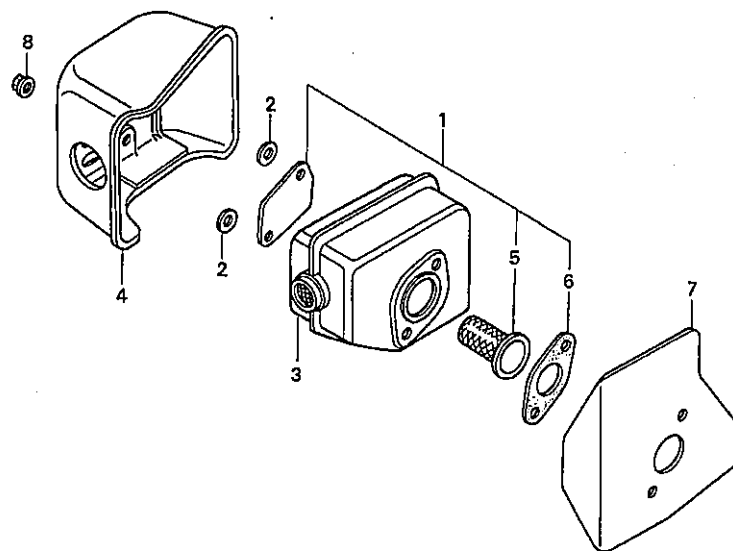
Service item	F.R.T.
COVER, AIR CLEANER	0.1
ELEMENT, AIR CLEANER	
FILTER, OUTER	
TUBE, BREATHER	
CASE COMP., AIR CLEANER	0.2

Ref. No.	Part No.	Description	Reqd. QTY GXV 160 H2	Serial No.	Parts catalogue code
1	15721-ZE7-000	TUBE, BREATHER	1		
2	17210-Z1V-003	ELEMENT, AIR CLEANER	1		
3	17218-888-003	FILTER, OUTER	1		
4	17220-Z1V-000	CASE COMP., AIR CLEANER	1		
5	17231-Z1V-000	COVER, AIR CLEANER	1		
6	17232-891-000	GROMMET, AIR CLEANER	2		
7	17238-ZE7-710	COLLAR, AIR CLEANER	2		
8	17239-ZE6-300	COLLAR B, AIR CLEANER	1		
9	90300-Z1V-000	NUT, AIR CLEANER	2		
10	94050-06000	NUT, FLANGE, 6MM	2		
11	95701-06035-00	BOLT, FLANGE, 6X35	1		

E-16

MUFFLER

C11



Z1V0-E1600

Service item

F.R.T.

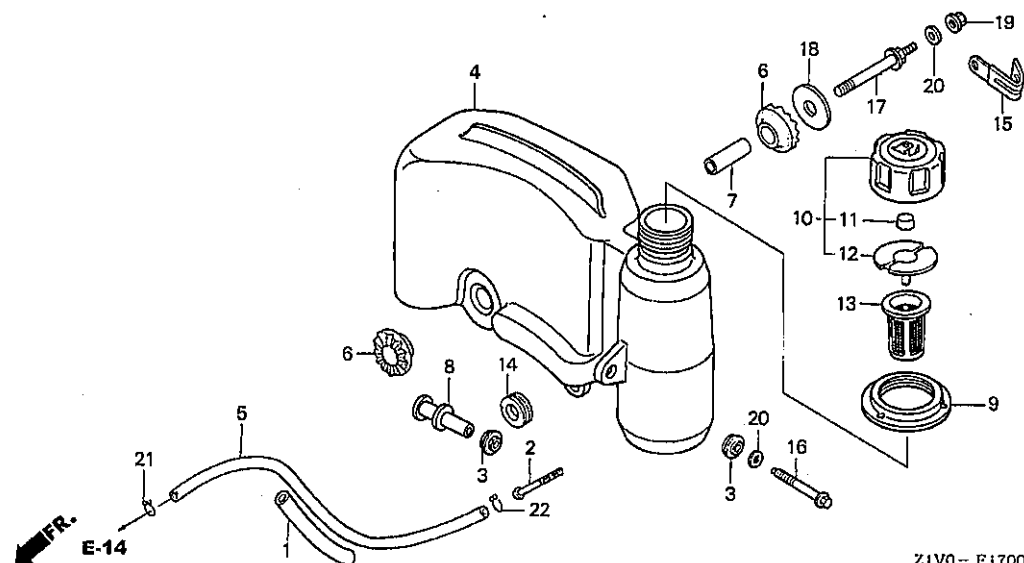
PROTECTOR COMP., MUFFLER	0.1
ARRESTER KIT, SPARK	0.2
ARRESTER, SPARK	
GASKET, MUFFLER	
MUFFLER COMP.	

Ref. No.	Part No.	Description	Reqd. QTY GXV 160 H2	Serial No.	Parts catalogue code
1	06180-ZE6-820	ARRESTER KIT, SPARK	(1)		
2	18292-ZE7-M10	PACKING, PROTECTOR	2	----- A14,C12,N1F,N4,SFC	
3	18310-Z1V-000	MUFFLER COMP.	1		
4	18320-Z1V-000	PROTECTOR COMP., MUFFLER	1		
5	18355-888-810	ARRESTER, SPARK	(1)		
6	18381-ZE6-820	GASKET, MUFFLER	(1)		
7	18381-Z1V-000	GASKET, MUFFLER	1		
8	90343-ZE6-000	NUT, SELF-LOCK, 6MM	2		

E-17

FUEL TANK

C12



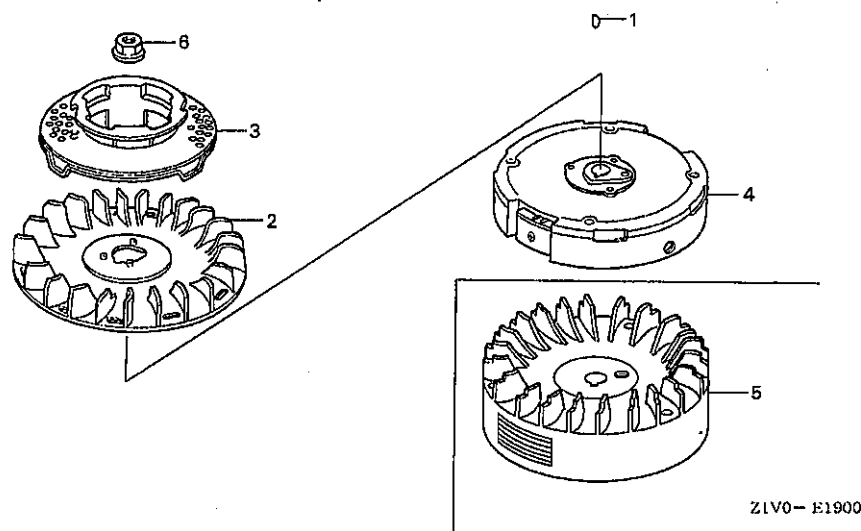
Service item	F.R.T.
GAUGE, FUEL LEVEL	0.1
.PACKING, FUEL CAP	
.TUBE, FUEL	
RUBBER B, TANK MOUNTING	0.2
.STRAINER, FUEL	
.TANK COMP., FUEL	

Ref. No.	Part No.	Description	Reqd. QTY	Serial No.	Parts catalogue code
			GXV 160 H2		
1	16854-ZH8-000	RUBBER, SUPPORTER (107MM) ...	1		
2	16952-Z1V-000	STRAINER, FUEL	1		
3	17506-ZE7-000	RUBBER, TANK SETTING	2		
4	17510-Z1V-000	TANK COMP., FUEL	1		
5	17512-ZE7-000	TUBE, FUEL	1		
6	17516-896-700	RUBBER B, TANK MOUNTING	2		
7	17518-Z1V-000	COLLAR, TANK SET	1		
8	17519-Z1V-000	COLLAR COMP., TANK	1		
9	17532-Z1V-000	RUBBER, TANK MOUNTING	1		
10	17620-Z1V-000	CAP ASSY., FUEL TANK	1		
11	17622-888-010	SPONGE, FUEL CAP BREATHER ...	1		
12	17624-ZE7-000	PACKING, FUEL CAP	1		
13	17636-Z1V-000	GAUGE, FUEL LEVEL	1		
14	80103-MG2-000	CUSHION, RR. FENDER	1		
15	90010-GEO-710	CLIP, TUBE	1	----- C12,SFC	
16	90014-Z1V-000	BOLT, FLANGE, 6X47(CT200) ...	1		
17	90016-Z1V-000	BOLT, TANK STAY	1		
18	90455-896-700	WASHER, TANK MOUNTING	1		
19	94050-06000	NUT, FLANGE, 6MM	1		
20	94103-06000	WASHER, PLAIN, 6MM	2		
21	95002-02080	CLIP, TUBE (B8)	1		
22	95002-70000	CLIP, TUBE (C11)	1		

E-19

FLYWHEEL(1)

C13



Service item

F.R.T.

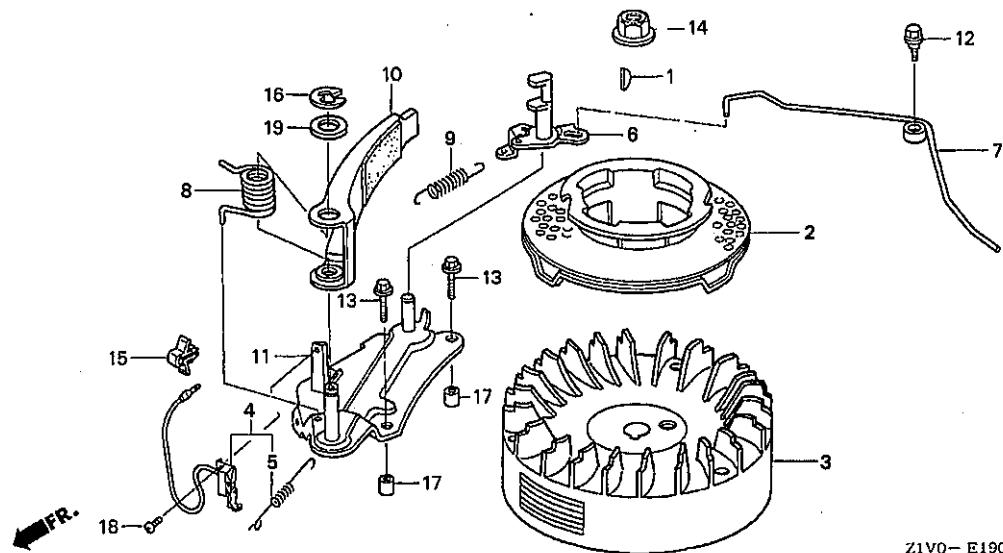
FAN, COOLING	0.2
PULLEY COMP., STARTER	
FLYWHEEL COMP.	0.3

Ref. No.	Part No.	Description	Reqd. QTY	Serial No.	Parts catalogue code
			GXV 160 H2		
1	13331-357-000	KEY, SPECIAL WOODRUFF, 25X18	1	-----	N1,N1F,N4,N5,N6,N6S,SFL,SFL1,SFY1
2	19511-Z1T-000	FAN, COOLING	1	-----	N1F,N6S,SFL,SFL1,SFY1
3	28451-ZE7-003	PULLEY COMP., STARTER	1	-----	N1,N1F,N4,N5,N6,N6S,SFL,SFL1,SFY1
4	31110-Z1V-003	FLYWHEEL COMP.	1	-----	N1F,N6S,SFL,SFL1,SFY1
5	31110-Z1V-810	FLYWHEEL COMP. (BRAKE)	1	-----	N1,N4,N5,N6
6	90201-Z1T-000	NUT, SPECIAL, 14MM	1	-----	N1,N1F,N4,N5,N6,N6S,SFL,SFL1,SFY1

E-19-1

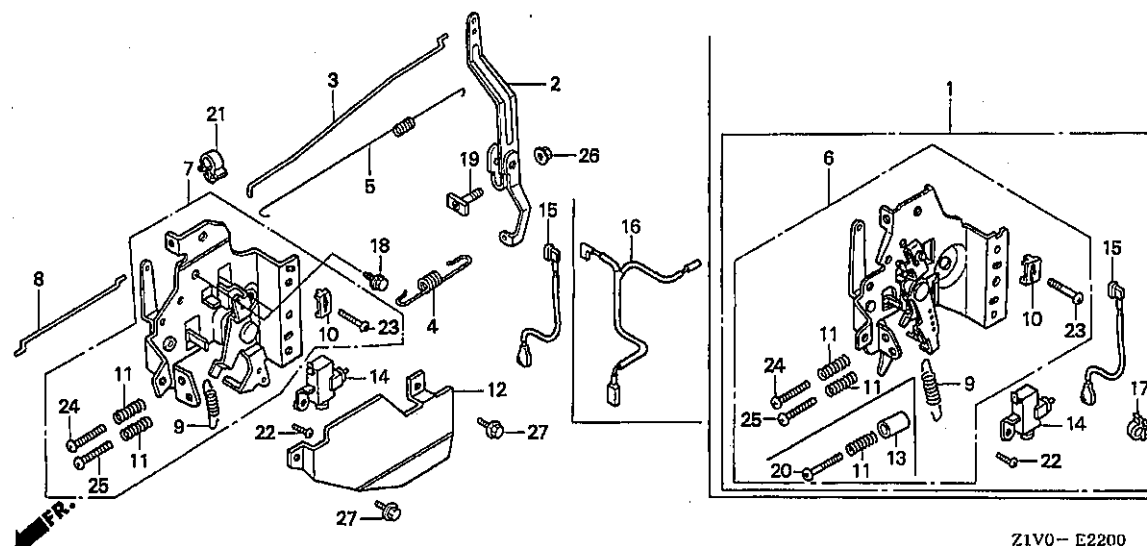
FLYWHEEL(2)

C14



Service item	F.R.T.
PULLEY COMP., STARTER	0.2
FLYWHEEL COMP.	0.3
.SWITCH ASSY., ENGINE STOP	
BRAKE COMP.	0.4
.CAM COMP., BRAKE	
.SPRING, BRAKE	
.SPRING, BRAKE RETURN	

Ref. No.	Part No.	Description	Reqd. QTY	Serial No.	Parts catalogue code
			GXV 160 H2		
1	13331-357-000	KEY, SPECIAL WOODRUFF, 25X18	1	-----	A14,C12,SFC
2	28451-ZE7-003	PULLEY COMP., STARTER	1	-----	A14,C12,SFC
3	31110-Z1V-810	FLYWHEEL COMP. (BRAKE)	1	-----	A14,C12,SFC
4	36100-Z1V-810	SWITCH ASSY., ENGINE STOP			
		(BRAKE)	1	-----	A14,C12,SFC
5	36121-ZE6-000	SPRING, SWITCH CONTROL	1	-----	A14,C12,SFC
6	43140-ZE7-000	CAM COMP., BRAKE	1	-----	A14,C12,SFC
7	43145-ZE7-003	ROD, THROTTLE RETURN	1	-----	A14,C12,SFC
8	75112-ZE6-000	SPRING, BRAKE	1	-----	A14,C12,SFC
9	75113-ZE6-000	SPRING, BRAKE RETURN	1	-----	A14,C12,SFC
10	75120-ZE6-013	BRAKE COMP.	1	-----	A14,C12,SFC
11	75130-ZE7-000	BASE COMP., BRAKE	1	-----	A14,C12,SFC
12	90015-ZE6-000	BOLT, FLANGE, 6MM	1	-----	A14,C12,SFC
13	90018-ZE1-000	BOLT, FLANGE, 6X23(CT200) ...	2	-----	A14,C12,SFC
14	90201-Z1T-000	NUT, SPECIAL, 14MM	1	-----	A14,C12,SFC
15	90649-ZG9-T41	CLIP, WIRE HARNESS	1	-----	A14,C12,SFC
16	90653-723-000	E-RING, 10MM	1	-----	A14,C12,SFC
17	90702-ZE6-000	DOWEL PIN, 8X9	2	-----	A14,C12,SFC
18	93500-04008-0A	SCREW, PAN, 4X8	1	-----	A14,C12,SFC
19	94102-12800	WASHER, PLAIN, 12MM	1	-----	A14,C12,SFC



Service item

F.R.T.

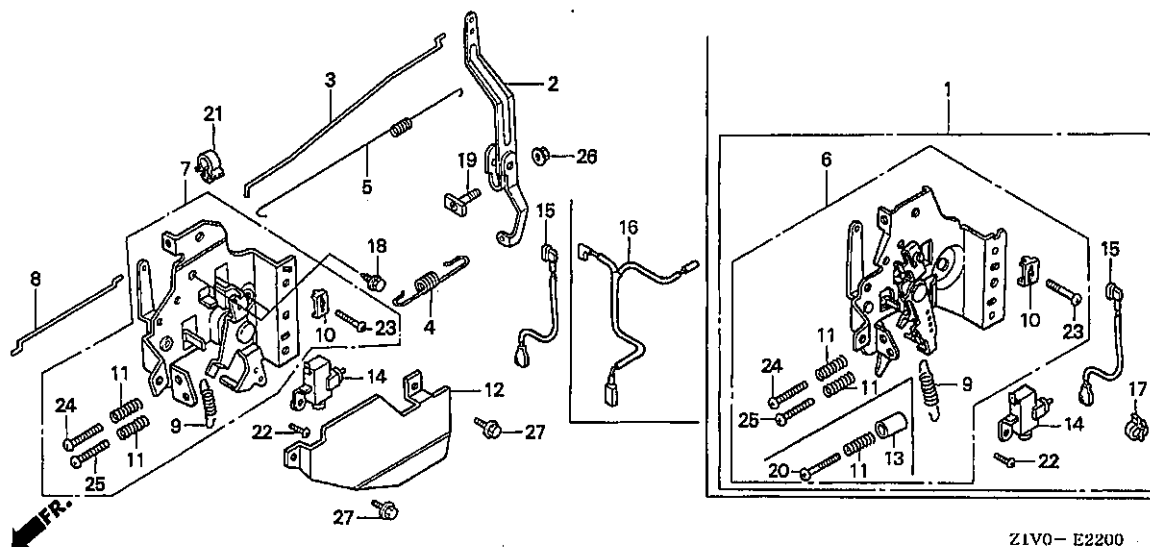
SPRING, LEVER	0.1
CORD, STOP SWITCH	0.2
ROD, CHOKE	
SPRING, GOVERNOR	
SWITCH ASSY., ENGINE STOP	
ARM, GOVERNOR	0.3
CONTROL ASSY.	
ROD, GOVERNOR	
SPRING, THROTTLE RETURN	

Ref. No.	Part No.	Description	Reqd. QTY	Serial No.	Parts catalogue code
			GXV 160 H2		
1	16500-ZE7-W31	CONTROL ASSY.	1	-----	SFL,SFL1,SFY1
2	16551-ZE7-000	ARM, GOVERNOR	1	-----	C12,N1,N4,N5,N6,N6S,SFC,SFL,SFL1,SFY1
3	16555-ZE7-000	ROD, GOVERNOR	1	-----	C12,N1,N4,N5,N6,N6S,SFC,SFL,SFL1,SFY1
4	16561-ZE7-020	SPRING, GOVERNOR	1	-----	C12,N1,N4,N5,N6,N6S,SFC,SFL,SFL1,SFY1
5	16562-ZE6-000	SPRING, THROTTLE RETURN	1	-----	C12,N1,N4,N5,N6,N6S,SFC,SFL,SFL1,SFY1
6	16570-ZE7-W10	CONTROL COMP.	1	-----	SFC,SFL,SFL1,SFY1
	16570-ZE7-772	1	-----	N6,N6S
7	16570-ZE7-020	CONTROL ASSY.	1	-----	C12,N1,N4,N5
8	16573-ZE7-000	ROD, CHOKE	1	-----	C12,N1,N4,N5,N6,N6S,SFC,SFL,SFL1,SFY1
9	16576-ZE7-300	SPRING, LEVER	1	-----	C12,N1,N4,N5,N6,N6S,SFC,SFL,SFL1,SFY1
10	16576-891-000	HOLDER, CABLE	1	-----	C12,N1,N4,N5,N6,N6S,SFC,SFL,SFL1,SFY1
11	16584-883-300	SPRING, CONTROL ADJUSTING ...	2	-----	C12,N1,N4,N5,N6,N6S,SFC,SFL,SFL1,SFY1
12	16585-ZE7-000	PROTECTOR, CONTROL	1	-----	C12,N1,N4,N5,N6,N6S,SFC,SFL,SFL1,SFY1
13	16599-ZG1-M10	COLLAR, STOPPER	1	-----	SFC,SFL,SFL1,SFY1
14	36100-ZE7-013	SWITCH ASSY., ENGINE STOP ...	1	-----	C12,N1,N4,N5,N6,N6S,SFC,SFL,SFL1,SFY1
15	36101-ZE7-020	CORD, STOP SWITCH	1	-----	N1,N4,N5,N6,N6S,SFL,SFL1,SFY1
16	36101-ZE7-812	CORD, STOP SWITCH (BRAKE) ...	1	-----	C12,SFC
17	36103-ZE1-000	HOLDER, STOP SWITCH CORD ...	1	-----	C12,N1,N4,N5,N6,SFC,SFL,SFL1,SFY1
18	90013-883-000	BOLT, FLANGE, 6X12(CT200) ...	2	-----	C12,N1,N4,N5,N6,N6S,SFC,SFL,SFL1,SFY1
19	90015-ZE5-010	BOLT, GOVERNOR ARM	1	-----	C12,N1,N4,N5,N6,N6S,SFC,SFL,SFL1,SFY1
20	90016-ZE7-W00	SCREW, RECESSED, 5X28	1	-----	SFC,SFL,SFL1,SFY1
21	90659-680-013	CLIP, WIRE HARNESS	1	-----	N1,N4,N5,N6,N6S,SFL,SFL1,SFY1
22	93500-04008-0A	SCREW, PAN, 4X8	1	-----	C12,N1,N4,N5,N6,N6S,SFC,SFL,SFL1,SFY1
23	93500-05016-0A	SCREW, PAN, 5X16	1	-----	C12,N1,N4,N5,N6,N6S,SFC,SFL,SFL1,SFY1
24	93500-05020-0A	SCREW, PAN, 5X20	1	-----	C12,N1,N4,N5,N6,N6S,SFC,SFL,SFL1,SFY1

E-22

CONTROL(1)

C16



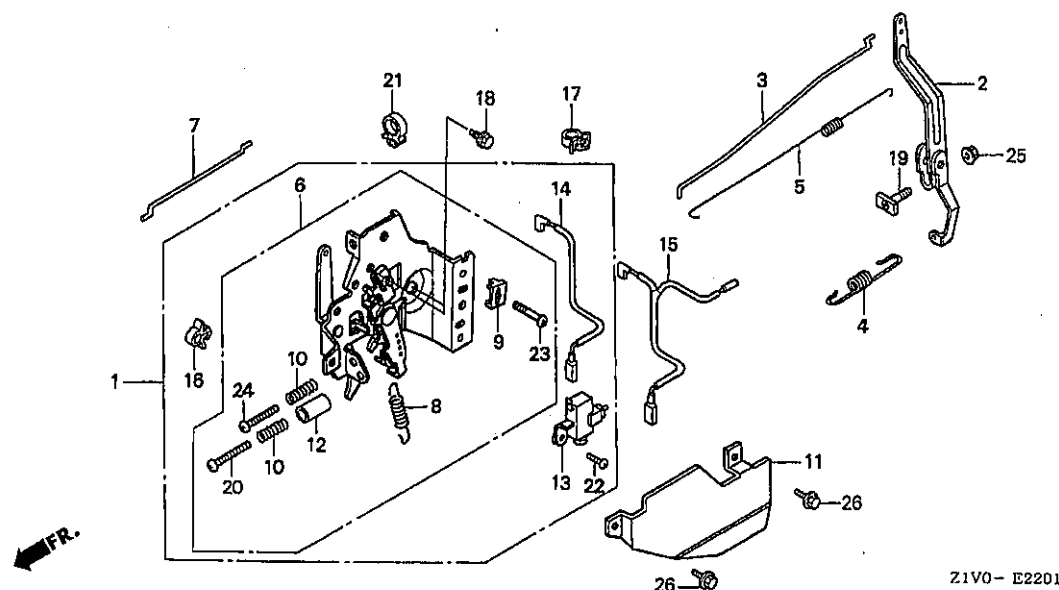
Z1V0-E2200

Ref. No.	Part No.	Description	Reqd. QTY		Serial No.	Parts catalogue code
			GXV	H2		
25	93500-05028-0A	SCREW, PAN, 5X28	1	-----	-----	C12,N1,N4,N5,N6,N6S
26	94050-06000	NUT, FLANGE, 6MM	1	-----	-----	C12,N1,N4,N5,N6,N6S,SFC,SFL,SFL1,SFY1
27	95701-06010-00	BOLT, FLANGE, 6X10	2	-----	-----	C12,N1,N4,N5,N6,N6S,SFC,SFL,SFL1,SFY1

E-22-1

CONTROL(2)

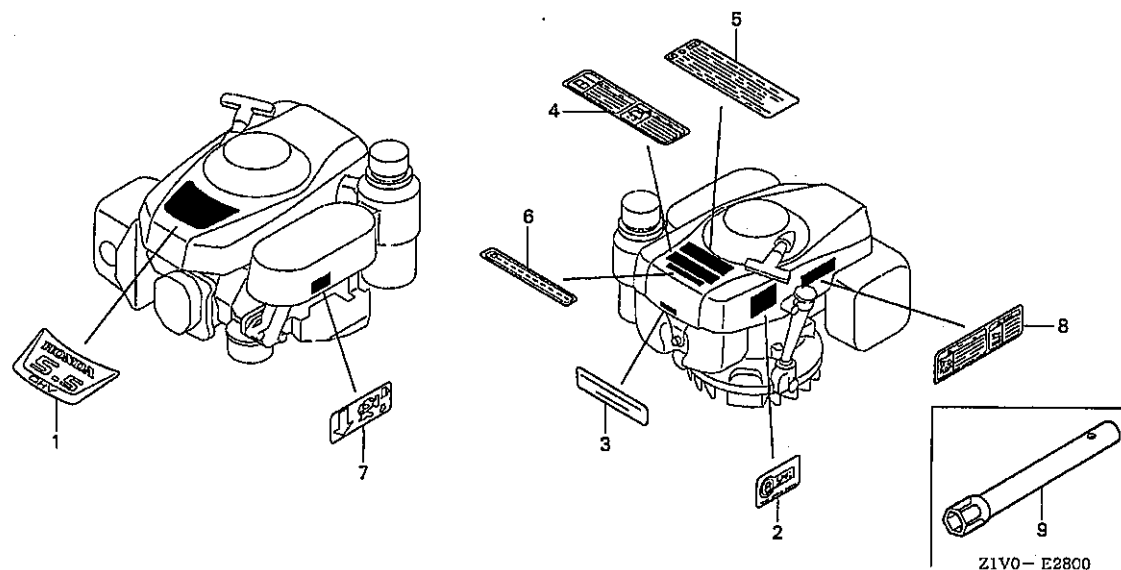
D 1



Z1V0-E2201

Service item	F.R.T.
CORD, STOP SWITCH	0.2
ROD, CHOKE	
SPRING, GOVERNOR	
SPRING, LEVER	
SWITCH ASSY., ENGINE STOP	
ARM, GOVERNOR	0.3
CONTROL ASSY.	
ROD, GOVERNOR	
SPRING, THROTTLE RETURN	
CONTROL COMP.	0.4

Ref. No.	Part No.	Description	Reqd. QTY	Serial No.	Parts catalogue code
			GXV 160 H2		
1	16500-ZE7-W11	CONTROL ASSY. (EN) (STD.)	1	-----	N1F
2	16551-ZE7-000	ARM, GOVERNOR	1	-----	A14,N1F
3	16555-ZE7-000	ROD, GOVERNOR	1	-----	A14,N1F
4	16561-ZE7-020	SPRING, GOVERNOR	1	-----	A14,N1F
5	16562-ZE6-000	SPRING, THROTTLE RETURN	1	-----	A14,N1F
6	16570-ZE7-W00	CONTROL COMP. (STD.)	1	-----	A14,N1F
7	16573-ZE7-000	ROD, CHOKE	1	-----	A14,N1F
8	16576-ZE7-300	SPRING, LEVER	1	-----	A14,N1F
9	16576-891-000	HOLDER, CABLE	1	-----	A14,N1F
10	16584-883-300	SPRING, CONTROL ADJUSTING ...	2	-----	A14,N1F
11	16585-ZE7-000	PROTECTOR, CONTROL	1	-----	A14,N1F
12	16599-ZG1-M10	COLLAR, STOPPER	1	-----	A14,N1F
13	36100-ZE7-013	SWITCH ASSY., ENGINE STOP ...	1	-----	A14,N1F
14	36101-ZE7-020	CORD, STOP SWITCH	1	-----	N1F
15	36101-ZE7-812	CORD, STOP SWITCH (BRAKE) ...	1	-----	A14
16	36103-ZE1-000	HOLDER, STOP SWITCH CORD	1	-----	A14,N1F
17	46392-SC2-003	CLAMP, BRAKE PIPE (GRAY)	1	-----	A14,N1F
18	90013-883-000	BOLT, FLANGE, 6X12(CT200) ...	2	-----	A14,N1F
19	90015-ZE5-010	BOLT, GOVERNOR ARM	1	-----	A14,N1F
20	90016-ZE7-W00	SCREW, RECESSED, 5X28	1	-----	A14,N1F
21	90659-680-013	CLIP, WIRE HARNESS	1	-----	A14,N1F
22	93500-04008-0A	SCREW, PAN, 4X8	1	-----	A14,N1F
23	93500-05016-0A	SCREW, PAN, 5X16	1	-----	A14,N1F
24	93500-05020-0A	SCREW, PAN, 5X20	1	-----	A14,N1F
25	94050-06000	NUT, FLANGE, 6MM	1	-----	A14,N1F
26	95701-06010-00	BOLT, FLANGE, 6X10	2	-----	A14,N1F



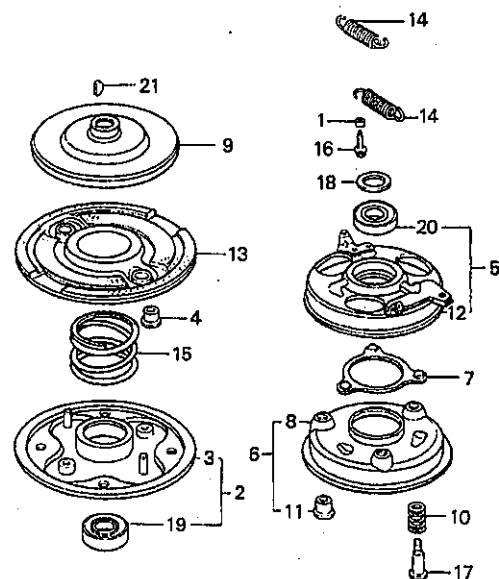
Service item F.R.T.
NOT INFORMATION

Ref. No.	Part No.	Description	Reqd. QTY GXV 160 H2	Serial No.	Parts catalogue code
1	87101-Z1V-000	MARK, EMBLEM	1		
2	87135-ZE2-020	LABEL, E-SPEC	1		
3	87504-Z1V-000	MARK, MANUFACTURER	1		
4	87520-Z1V-000	MARK A, COMBINATION (JAPANESE)	1	-----	N6S,SFL,SFL1,SFY1
5	87522-Z1V-000	LABEL, CAUTION	1	-----	A14,C12,N1,N1F,N4,N5,N6,SFC
6	87522-Z1V-800	LABEL, CAUTION (CHINESE)	1	-----	C12,N4,SFC
7	87524-Z1V-000	MARK, FUEL COCK CAUTION	1		
8	87526-Z1V-000	MARK B, COMBINATION (JAPANESE)	1	-----	N6S,SFL,SFL1,SFY1
9	99004-21002	WRENCH, BOX (P21)	1	-----	N6S,SFC,SFL,SFL1,SFY1
	99004-21003	1	-----	A14,C12,N1,N1F,N4,N5,N6

E-40

OTHER PARTS

D 3



Z1V0-E4000

Service item

F.R.T.

NOT INFORMATION

Ref. No.	Part No.	Description	Reqd. QTY	Serial No.	Parts catalogue code
			GXV 160 H2		
1	19512-883-000	COLLAR, FAN	2	-----	SFL1,SFY1
2	72600-VA4-010	HOLDER ASSY., BLADE	1	-----	SFL1,SFY1
3	72610-VA4-000	HOLDER COMP., BLADE	1	-----	SFL1,SFY1
4	72613-VA4-000	BUSH, BLADE HOLDER	2	-----	SFL1,SFY1
5	75090-VA4-030	PLATE ASSY., BALL CONTROL ...	1	-----	SFL1,SFY1
6	75100-VA4-010	BRAKE COMP.	1	-----	SFL1,SFY1
7	75110-VA4-000	RETAINER COMP., BALL	1	-----	SFL1,SFY1
8	75120-VA4-010	DISK, BRAKE	1	-----	SFL1,SFY1
9	75130-VA4-000	DISK, DRIVE	1	-----	SFL1,SFY1
10	75132-VA4-000	SPRING, BRAKE HOLDER	3	-----	SFL1,SFY1
11	75133-VA4-000	BUSH, BRAKE HOLDER	3	-----	SFL1,SFY1
12	75140-VA4-020	PLATE COMP., BALL CONTROL ...	1	-----	SFL1,SFY1
13	75150-VA3-J01	DISK COMP., DRIVEN	1	-----	SFL1,SFY1
14	75182-VA3-J00	SPRING, CLUTCH RETURN (53.0MM)	2	-----	SFL1,SFY1
15	75183-VA3-J00	SPRING, CLUTCH (36.6MM)	1	-----	SFL1,SFY1
16	90014-952-000	BOLT, FLANGE, 6X14(CT200) ...	4	-----	SFL1,SFY1
17	90021-VA4-000	BOLT, SPECIAL, 6MM	3	-----	SFL1,SFY1
18	90501-952-010	WASHER, THRUST	1	-----	SFL1,SFY1
19	91102-VA4-013	BEARING, RADIAL BALL, 6204 ..	1	-----	SFL1,SFY1
20	91103-VA4-003	BEARING, RADIAL BALL, 60/22 ..	1	-----	SFL1,SFY1
21	94401-16150	KEY, WOODRUFF, 16X15	1	-----	SFL1,SFY1

PART NO. INDEX

E 1

Part Number	Address	Page	Ref.	Part Number	Address	Page	Ref.	Part Number	Address	Page	Ref.	Part Number	Address	Page	Ref.	Part Number	Address	Page	Ref.
06000				14451-ZE1-013	C6	18	6	16584-883-300	D1	29	8	28000				75000			
06180-ZE6-820	C11	23	1	14568-ZE1-000	C6	18	7		C15	27	11					75090-VA4-030	D3	31	5
11000				14711-ZF1-000	C6	18	8	16585-ZE7-000	D1	29	10	28400-ZE7-0032C	C7	19	1	75100-VA4-010	D3	31	6
11300-Z1V-000	C2	14	1	14721-ZE7-000	C6	18	9		C15	27	12	28400-ZE7-V112C	C7	19	1	75110-VA4-000	D3	31	7
11300-Z1V-800	C2	14	2	14751-ZE1-000	C6	18	10	16599-ZG1-M10	D1	29	11	28410-ZE7-0032D	C7	19	2	75112-ZE6-000	C14	26	8
11381-ZE7-M10	C2	14	3	14771-ZE1-000	C6	18	11		C15	27	13	28420-ZE7-003	C7	19	3	75113-ZE6-000	C14	26	9
12000				14791-ZE1-010	C6	18	12	16854-ZH8-000	D1	29	12	28422-896-010	C7	19	4	75120-VA4-010	D3	31	8
12000-Z1V-000	C2	14	4	15000				16952-Z1V-000	C12	24	1	28431-896-000	C7	19	5	75120-ZE6-013	C14	26	10
12125-Z1V-000	C2	14	5	15335-ZE7-000	C2	14	10	16953-ZE1-812	C9	21	16	28441-896-000	C7	19	6	75130-VA4-000	D3	31	9
12204-ZE1-306	C1	13	1	15620-ZE6-810	C2	14	11	16954-ZE1-812	C9	21	17	28442-896-700	C7	19	7	75130-ZE7-000	C14	26	11
12205-ZE1-315	C1	13	2	15630-ZE6-810	C2	14	12	16956-ZE1-811	C9	21	18	28443-896-000	C7	19	8	75132-VA4-000	D3	31	10
12209-ZE6-003	C6	18	1	15721-ZE7-000	C10	22	1	16957-ZE1-812	C9	21	19	28451-ZE7-003	C13	25	3	75133-VA4-000	D3	31	11
12210-Z1V-000	C1	13	3	16000									C14	26	2	75140-VA4-020	D3	31	12
12216-ZE5-300	C1	13	4	16010-ZE0-025	C9	21	1	17000				28461-ZE1-003	C7	19	9	75150-VA3-J01	D3	31	13
12251-ZE7-000	C1	13	5	16011-ZE0-005	C9	21	2	17210-Z1V-003	C10	22	2	28462-ZA7-003	C7	19	10	75182-VA3-J00	D3	31	14
12311-ZG9-000	C1	13	6	16013-ZE0-005	C9	21	3	17218-888-003	C10	22	3	28462-ZE7-V11	C7	19	10	75183-VA3-J00	D3	31	15
12355-Z1V-000	C2	14	6	16015-ZE0-831	C9	21	4	17220-Z1V-000	C10	22	4	30000				80000			
12367-883-003	C2	14	7	16016-ZH7-W01	C9	21	5	17231-Z1V-000	C10	22	5	30500-Z1V-003	C8	20	2	80103-MG2-000	C12	24	14
12372-ZE7-000	C2	14	8	16024-ZE1-811	C9	21	6	17232-891-000	C10	22	6	30700-Z1V-003	C8	20	3	87000			
12373-ZE7-000	C2	14	9	16028-ZE0-005	C9	21	7	17238-ZE7-710	C10	22	7	31000				87101-Z1V-000	D2	30	1
12391-ZE7-M10	C1	13	7	16045-ZE7-005	C9	21	8	17239-ZE6-300	C10	22	8	31110-Z1V-003	C13	25	4	87135-ZE2-020	D2	30	2
13000				16100-Z1V-003	C9	21	9	17240-ZE6-000	C2	14	21	31110-Z1V-810	C13	25	5	87504-Z1V-000	D2	30	3
13010-ZL0-003	C4	16	1	16124-ZE0-005	C9	21	10	17506-ZE7-000	C12	24	3		C14	26	3	87520-Z1V-000	D2	30	4
13010-ZL0-004	C4	16	1	16166-Z1V-003	C9	21	11	17510-Z1V-000	C12	24	4	36000				87522-Z1V-000	D2	30	5
13011-ZL0-003	C4	16	1	16211-ZE7-000	C9	21	12	17512-ZE7-000	C12	24	5	36100-Z1V-810	C14	26	4	87522-Z1V-800	D2	30	6
13011-ZL0-004	C4	16	1	16212-ZE7-M10	C9	21	13	17516-896-700	C12	24	6	36100-ZE7-013	C15	27	14	87524-Z1V-000	D2	30	7
13012-ZL0-003	C4	16	1	16220-ZE6-010	C9	21	14	17517-ZE7-000	C2	14	22		D1	29	13	87526-Z1V-000	D2	30	8
13012-ZL0-004	C4	16	1	16221-ZE7-M11	C9	21	15	17518-Z1V-000	C12	24	7	36101-ZE7-020	C15	27	15	90000			
13013-ZL0-003	C4	16	1	16500-ZE7-W11	D1	29	1	17519-Z1V-000	C12	24	8		D1	29	14	90001-ZE1-000	C5	17	10
13013-ZL0-004	C4	16	1	16500-ZE7-W31	C15	27	1	17532-Z1V-000	C12	24	9	36101-ZE7-812	C15	27	16	90010-GE0-710	C12	24	15
13101-Z1T-000	C4	16	2	16510-ZE6-000	C2	14	13	17620-Z1V-000	C12	24	10		D1	29	17	90012-ZE0-010	C6	18	13
13101-ZH8-010	C4	16	2	16511-ZE1-000	C2	14	14	17622-888-010	C12	24	11	36103-ZE1-000	C15	27	17	90013-883-000	C1	13	8
13102-ZE7-020	C4	16	2	16512-ZE6-000	C2	14	15	17624-ZE7-000	C12	24	12		D1	29	16		C15	27	18
13103-ZE7-020	C4	16	2	16513-ZE1-000	C2	14	16	17636-Z1V-000	C12	24	13	36121-ZE6-000	C14	26	5		D1	29	18
13104-ZE7-020	C4	16	2	16515-ZE6-010	C2	14	17	18000				43000				90014-952-000	C3	15	26
13111-Z1T-000	C4	16	3	16525-ZE6-010	C2	14	18	18292-ZE7-M10	C11	23	2						D3	31	16
13200-Z1V-000	C4	16	4	16531-Z1T-000	C2	14	19	18310-Z1V-000	C11	23	3	43140-ZE7-000	C14	26	6	90014-Z1V-000	C12	24	16
13310-ZE7-010	C4	16	5	16541-ZE7-000	C2	14	20	18320-Z1V-000	C11	23	4	43143-ZE7-000	C2	14	25	90015-883-000	C8	20	4
13310-ZE7-641	C4	16	6	16551-ZE7-000	C15	27	2	18355-888-810	C11	23	5	43145-ZE7-003	C14	26	7	90015-ZE5-010	C15	27	19
13310-ZE7-661	C4	16	7		D1	29	2	18381-Z1V-000	C11	23	7	46000					D1	29	19
13310-ZE7-681	C4	16	8	16555-ZE7-000	C15	27	3	18381-ZE6-820	C11	23	6	46392-SC2-003	D1	29	17	90015-ZE6-000	C14	26	12
13310-ZE7-771	C4	16	9	16561-ZE7-020	C15	27	4	19000								90016-Z1V-000	C12	24	17
13331-357-000	C13	25	1		D1	29	4	19511-Z1T-000	C13	25	2	72000				90016-ZE7-W00	C15	27	20
14000				16562-ZE6-000	C15	27	5	19512-883-000	D3	31	1						D1	29	20
14100-ZE7-000	C6	18	2	16570-ZE7-020	C15	27	6	19610-Z1V-000ZA	C8	20	1	72600-VA4-010	D3	31	2	90017-883-000	C3	15	27
14100-ZE7-770	C6	18	2	16570-ZE7-772	C15	27	6	23000				72610-VA4-000	D3	31	3	90018-ZE1-000	C14	26	13
14410-ZE1-010	C6	18	3	16570-ZE7-W00	D1	29	6	23411-ZE7-000	C2	14	23	72613-VA4-000	D3	31	4	90021-VA4-000	D3	31	17
14431-ZE1-000	C6	18	4	16570-ZE7-W10	C15	27	6	23421-ZE6-000	C2	14	24					90022-888-010	C3	15	28
14441-ZE1-010	C6	18	5	16573-ZE7-000	C15	27	8									90043-ZE6-000	C1	13	9
					D1	29	9									90048-ZC3-000	C1	13	10
					C15	27	9									90131-ZE1-000	C3	15	29
																90201-Z1T-000	C13	25	6

PART NO. INDEX

E 2

Part Number	Address	Page	Ref.	Part Number	Address	Page	Ref.	Part Number	Address	Page	Ref.	Part Number	Address	Page	Ref.	Part Number	Address	Page	Ref.
90201-Z1T-000	C14	26	14	94301-08140	C3	15	45												
90206-ZE1-000	C6	18	14	94301-10160	C1	13	11												
90300-Z1V-000	C10	22	9	94401-16150	D3	31	21												
90343-ZE6-000	C11	23	8																
90401-ZE7-W00	C5	17	11	95000															
90451-ZE1-000	C3	15	30	95002-02080	C12	24	21												
90452-166-600	C3	15	31	95002-70000	C12	24	22												
90452-187-000	C3	15	32	95701-06008-00	C7	19	12												
90455-896-700	C12	24	18	95701-06010-00	C16	28	27												
90501-952-010	D3	31	18		D1	29	26												
90551-ZE1-000	C5	17	12	95701-06012-08	C3	15	46												
90581-GB5-610	C8	20	5	95701-06035-00	C10	22	11												
90601-ZE1-000	C3	15	33	95701-08050-00	C1	13	12												
90602-ZE1-000	C3	15	34		C3	15	47												
90649-ZG9-T41	C14	26	15	96000															
90653-723-000	C14	26	16																
90659-680-013	C15	27	21	96100-62050-00	C3	15	48												
	D1	29	21	98000															
90701-ZE6-000	C3	15	35	98079-54846	C1	13	13												
90702-ZE6-000	C14	26	17	98079-54855	C1	13	13												
91000				98079-55846	C1	13	13												
91102-VA4-013	D3	31	19	98079-55855	C1	13	13												
91103-VA4-003	D3	31	20	98079-56846	C1	13	13												
91205-Z1V-003	C3	15	36	98079-56855	C1	13	13												
91231-Z1V-003	C3	15	37	98079-56846	C1	13	13												
91251-Z1V-003	C3	15	38	98079-56855	C1	13	13												
91252-Z1V-003	C3	15	39	99000															
91301-Z1V-003	C3	15	40	99004-21002	D2	30	9												
91302-Z1V-003	C3	15	41	99004-21003	D2	30	9												
92000				99101-ZH8-0600	C9	21	21												
92101-06012-0H	C7	19	11	99101-ZH8-0620	C9	21	21												
93000				99101-ZH8-0650	C9	21	21												
93500-03006-1H	C9	21	20	99204-ZE0-0350	C9	21	22												
93500-04008-0A	C14	26	18																
	C15	27	22																
	D1	29	22																
93500-05016-0A	C3	15	42																
	C15	27	23																
	D1	29	23																
93500-05020-0A	C15	27	24																
	D1	29	24																
93500-05028-0A	C16	28	25																
94000																			
94050-06000	C10	22	10																
	C12	24	19																
	C16	28	26																
	D1	29	25																
94101-06800	C3	15	43																
94102-12800	C14	26	19																
94103-06000	C12	24	20																
94251-08000	C3	15	44																

PART NAME INDEX

F 1

Part name	Address	Page	Ref.	Part name	Address	Page	Ref.	Part name	Address	Page	Ref.
[A]				CHOKE SET	C9	21	8	FILTER, OUTER	C10	22	3
ARM, GOVERNOR	C15	27	2	CLAMP, BRAKE PIPE	D1	29	17	FLOAT SET	C9	21	3
	D1	29	2	CLIP, GOVERNOR HOLDER	C3	15	34	FLYWHEEL COMP.	C13	25	4
ARM, VALVE ROCKER	C6	18	4	CLIP, PISTON PIN, 18MM	C5	17	12				5
ARRESTER KIT, SPARK	C11	23	1	CLIP, TUBE	C12	24	15		C14	26	3
ARRESTER, SPARK	C11	23	5				21	[G]			
[B]				CLIP, VALVE GUIDE	C1	13	4	GASKET SET	C9	21	1
BARREL ASSY., CYLINDER	C2	14	4	CLIP, WIRE HARNESS	C14	26	15	GASKET, CYLINDER HEAD	C1	13	5
BASE COMP., BRAKE	C14	26	11		C15	27	21	GASKET, MUFFLER	C11	23	6
BASE COMP., HOLDER	C2	14	25		D1	29	21				7
BEARING, RADIAL BALL, 60/22 ..	D3	31	20	COIL ASSY., IGNITION	C8	20	2	GAUGE COMP., OIL LEVEL	C2	14	11
BEARING, RADIAL BALL, 6204 ..	D3	31	19	COLLAR B, AIR CLEANER	C10	22	8	GAUGE, FUEL LEVEL	C12	24	13
BEARING, RADIAL BALL, 6205 ..	C3	15	48	COLLAR, AIR CLEANER	C10	22	7	GEAR, DRIVEN	C2	14	24
BOLT, CONNECTING ROD	C5	17	10	COLLAR, EXTENSION	C2	14	21	GOVERNOR ASSY.	C2	14	13
BOLT, DRAIN PLUG	C3	15	29	COLLAR, FAN	D3	31	1	GROMMET, AIR CLEANER	C10	22	6
BOLT, FLANGE, 6MM	C14	26	12	COLLAR, STOPPER	C15	27	13	GUIDE, EX. VALVE	C1	13	2
BOLT, FLANGE, 6X10	C16	28	27		D1	29	12	GUIDE, IN. VALVE	C1	13	1
	D1	29	26	COLLAR, TANK SET	C12	24	7	[H]			
BOLT, FLANGE, 6X12	C1	13	8	CONTROL ASSY.	C15	27	1	HEAD COMP., CYLINDER	C1	13	3
	C3	15	46		D1	29	1	HOLDER ASSY., BLADE	D3	31	2
	C15	27	18	CONTROL COMP.	C15	27	6	HOLDER COMP., BLADE	D3	31	3
	D1	29	18		D1	29	6	HOLDER, CABLE	C15	27	10
BOLT, FLANGE, 6X14	C3	15	26	CORD, STOP SWITCH	C15	27	15		D1	29	9
	D3	31	16				16	HOLDER, GOVERNOR WEIGHT	C2	14	15
BOLT, FLANGE, 6X20	C3	15	28		D1	29	14	HOLDER, STOP SWITCH CORD	C15	27	17
BOLT, FLANGE, 6X23	C14	26	13				15		D1	29	16
BOLT, FLANGE, 6X28	C8	20	4	COVER COMP., BREATHER	C2	14	6	[I]			
BOLT, FLANGE, 6X32	C3	15	27	COVER COMP., FAN	C8	20	1	INSULATOR, CARBURETOR	C9	21	12
BOLT, FLANGE, 6X35	C10	22	11	COVER, AIR CLEANER	C10	22	5	[J]			
BOLT, FLANGE, 6X47	C12	24	16	COVER, HEAD	C1	13	6	JET SET, PILOT,	C9	21	22
BOLT, FLANGE, 6X8	C7	19	12	COVER, HEAD	C1	13	6	JET, MAIN,	C9	21	21
BOLT, FLANGE, 8X50	C1	13	12	CRANKSHAFT COMP.	C4	16	5	[K]			
	C3	15	47				6	KEY, SPECIAL WOODRUFF, 25X18 ..	C13	25	1
BOLT, GOVERNOR ARM	C15	27	19				7		C14	26	1
	D1	29	19				8	KEY, WOODRUFF, 16X15	D3	31	21
BOLT, HEX., 6X12	C7	19	11				9	KNOB, RECOIL STARTER	C7	19	9
BOLT, PIVOT, 8MM	C6	18	13	CUSHION, RR. FENDER	C12	24	14	[L]			
BOLT, SPECIAL, 6MM	D3	31	17	[D]				LABEL, CAUTION	D2	30	5
BOLT, STUD, 6X109	C1	13	9	DISK COMP., DRIVEN	D3	31	13				6
BOLT, STUD, 6X85	C1	13	10	DISK, BRAKE	D3	31	8	LABEL, E-SPEC	D2	30	2
BOLT, TANK STAY	C12	24	17	DISK, DRIVE	D3	31	9	LEVER, COCK	C9	21	16
BRAKE COMP.	C14	26	10	DOWEL PIN, 10X16	C1	13	11	LIFTER, VALVE	C6	18	5
	D3	31	6	DOWEL PIN, 8X14	C3	15	45	[M]			
BUSH, BLADE HOLDER	D3	31	4	DOWEL PIN, 8X9	C14	26	17	MARK A, COMBINATION	D2	30	4
BUSH, BRAKE HOLDER	D3	31	11	[E]				MARK B, COMBINATION	D2	30	8
[C]				ELEMENT, AIR CLEANER	C10	22	2				
CAMSHAFT ASSY.	C6	18	2	E-RING, 10MM	C14	26	16				
CAM COMP., BRAKE	C14	26	6	EXTENSION, OIL FILLER	C2	14	12				
CAP ASSY., FUEL TANK	C12	24	10	[F]							
CAP ASSY., NOISE SUPPRESSOR ..	C8	20	3	FAN, COOLING	C13	25	2				
CARBURETOR ASSY.	C9	21	9	FILTER, BREATHER	C2	14	7				
CASE COMP., AIR CLEANER	C10	22	4								
CASE COMP., RECOIL STARTER ..	C7	19	2								
CHAMBER SET, FLOAT	C9	21	4								

PART NAME INDEX

F 2

Part name	Address	Page	Ref.	Part name	Address	Page	Ref.	Part name	Address	Page	Ref.
MARK, EMBLEM	D2	30	1	[R]				SPRING, RETURN	C7	19	8
MARK, FUEL COCK CAUTION	D2	30	7	RATCHET, STARTER	C7	19	4	SPRING, SWITCH CONTROL	C14	26	5
MARK, MANUFACTURER	D2	30	3	RETAINER COMP., BALL	D3	31	7	SPRING, THROTTLE RETURN	C15	27	5
MUFFLER COMP.	C11	23	3	RETAINER, IN. VALVE SPRING	C6	18	11		D1	29	5
[N]				RING SET, PISTON	C4	16	1	SPRING, VALVE	C6	18	10
NOZZLE, MAIN	C9	21	11	ROD ASSY., CONNECTING	C4	16	4	SPRING, WEIGHT RETURN	C6	18	7
NUT, AIR CLEANER	C10	22	9	ROD, CHOKE	C15	27	8	STARTER ASSY., RECOIL	C7	19	1
NUT, FLANGE, 6MM	C10	22	10		D1	29	7	STAY COMP., TANK	C2	14	22
	C12	24	19	ROD, GOVERNOR	C15	27	3	STRAINER, FUEL	C12	24	2
	C16	28	26		D1	29	3	SWITCH ASSY., ENGINE STOP	C14	26	4
	D1	29	25	ROD, PUSH	C6	18	3		C15	27	14
NUT, PIVOT ADJUSTING	C6	18	14	ROD, THROTTLE RETURN	C14	26	7		D1	29	13
NUT, SELF-LOCK, 6MM	C11	23	8	ROPE, RECOIL STARTER	C7	19	10	[T]			
NUT, SPECIAL, 14MM	C13	25	6	RUBBER B, TANK MOUNTING	C12	24	6	TANK COMP., FUEL	C12	24	4
	C14	26	14	RUBBER, OIL RETURN	C2	14	10	TUBE, BREATHER	C10	22	1
[O]				RUBBER, SUPPORTER	C12	24	1	TUBE, FUEL	C12	24	5
OIL SEAL, 12X20X6.5	C3	15	36	RUBBER, TANK MOUNTING	C12	24	9				
OIL SEAL, 25X38X7	C3	15	38	RUBBER, TANK SETTING	C12	24	3	[V]			
OIL SEAL, 25.4X40X7	C3	15	39	[S]				VALVE SET, FLOAT	C9	21	2
OIL SEAL, 6X11X4	C3	15	37	SCREW SET	C9	21	7	VALVE, BREATHER	C2	14	8
O-RING, 22.1X2.2	C3	15	40	SCREW SET, DRAIN	C9	21	6	VALVE, EX.	C6	18	9
O-RING, 25.5X3	C3	15	41	SCREW SET, PILOT	C9	21	5	VALVE, IN.	C6	18	8
[P]				SCREW, PAN, 3X6	C9	21	20				
PACKING, BREATHER COVER	C2	14	9	SCREW, PAN, 4X8	C14	26	18	[W]			
PACKING, CARBURETOR	C9	21	15		C15	27	22	WASHER, 10X21	C3	15	32
PACKING, FUEL CAP	C12	24	12		D1	29	22	WASHER, DRAIN PLUG, 10.2MM	C3	15	33
PACKING, FUEL COCK	C9	21	19	SCREW, PAN, 5X16	C15	27	23	WASHER, PLAIN, 12MM	C14	26	19
PACKING, HEAD COVER	C1	13	7		D1	29	23	WASHER, PLAIN, 6MM	C3	15	43
PACKING, INSULATOR	C9	21	13	SCREW, PAN, 5X20	C15	27	24		C8	20	5
PACKING, OIL PAN	C2	14	3		D1	29	24		C12	24	20
PACKING, PROTECTOR	C11	23	2	SCREW, PAN, 5X28	C16	28	25	WASHER, TANK MOUNTING	C12	24	18
PAN ASSY., OIL	C2	14	1	SCREW, RECESSED, 5X28	C15	27	20	WASHER, THRUST	D3	31	18
					D1	29	20	WASHER, THRUST, 12MM	C3	15	31
PIN, GOVERNOR WEIGHT	C2	14	16	SCREW, THROTTLE STOP	C9	21	10	WASHER, THRUST, 25.6MM	C5	17	11
PIN, LOCK, 2.0	C3	15	35	SEAL, VALVE STEM	C6	18	1	WASHER, THRUST, 6MM	C3	15	30
PIN, LOCK, 8MM	C3	15	44	SHAFT, DRIVE	C2	14	23	WEIGHT, GOVERNOR	C2	14	14
PIN, PISTON	C4	16	3	SHAFT, GOVERNOR ARM	C2	14	20	WRENCH, BOX	D2	30	9
PISTON	C4	16	2	SHAFT, GOVERNOR HOLDER	C2	14	17				
PIVOT, ROCKER ARM	C6	18	6	SLIDER, GOVERNOR	C2	14	19				
PLATE ASSY., BALL CONTROL	D3	31	5	SPACER COMP., CARBURETOR	C9	21	14				
PLATE COMP., BALL CONTROL	D3	31	12	SPONGE, FUEL CAP BREATHER	C12	24	11				
PLATE, FRICTION	C7	19	5	SPRING, BRAKE	C14	26	8				
PLATE, GOVERNOR SHAFT HOLDER	C2	14	18	SPRING, BRAKE HOLDER	D3	31	10				
PLATE, GUIDE	C2	14	5	SPRING, BRAKE RETURN	C14	26	9				
PLATE, LEVER SETTING	C9	21	17	SPRING, CLUTCH	D3	31	15				
PLATE, PUSH ROD GUIDE	C6	18	12	SPRING, CLUTCH RETURN	D3	31	14				
PLUG, SPARK	C1	13	13	SPRING, COCK LEVER	C9	21	18				
PROTECTOR COMP., MUFFLER	C11	23	4	SPRING, CONTROL ADJUSTING	C15	27	11				
PROTECTOR, CONTROL	C15	27	12		D1	29	10				
	D1	29	11	SPRING, FRICTION	C7	19	6				
PULLEY COMP., STARTER	C13	25	3	SPRING, GOVERNOR	C15	27	4				
	C14	26	2		D1	29	4				
PULLEY, RECOIL STARTER	C7	19	3	SPRING, LEVER	C15	27	9				
					D1	29	8				
				SPRING, RECOIL STARTER	C7	19	7				

1

FOREWORD INDEX

2

ENGINE GROUP

3

PART NUMBER INDEX

4

PART NAME INDEX

August 29, 2003



PARTS CATALOGUE NEWS

Honda Motor Co., Ltd. Service Division

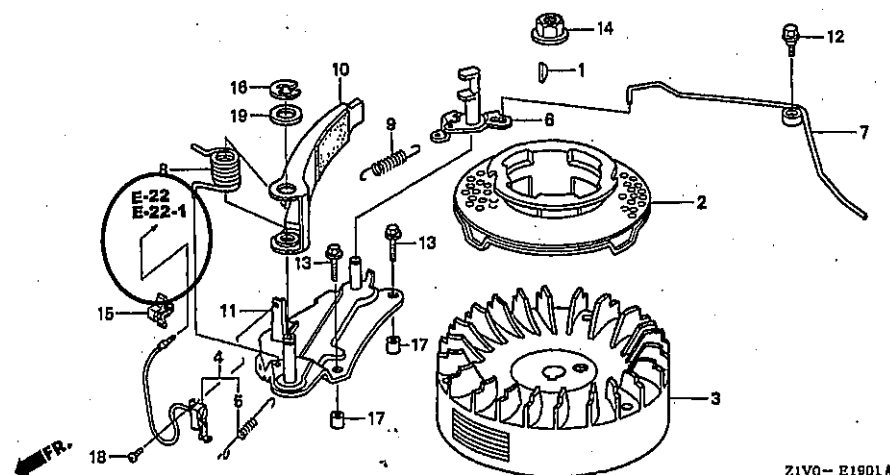
PARTS CATALOGUE - CORRECTED

Printed in Japan

CODE NO.	BOOKLET TYPE	13Z1V401
	MICRO-FICHE	13Z1V4EA/FA
PARTS CATALOGUE NEWS	GXV160H2	
NEWS NO.	001	

Block No.	Ref. No.	Note	Part No.	Description	Reqd. QTY GXV 160 H2	Serial No.	Parts catalogue code
-----------	----------	------	----------	-------------	-------------------------------	------------	----------------------

E-19-1 FLYWHEEL (2)



Z1V0-E1901A

E-19-1 15 E 90649-ZG9-T41 *PARTS NO. DELETION

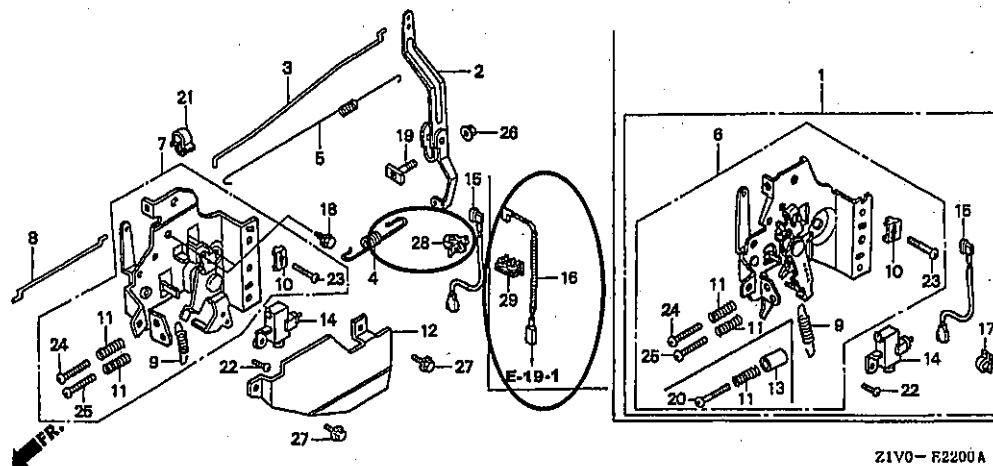
NOTE A:PART NO.CHANGE D:NEWLY PROVIDED E:PART NO.DELETION K:REQUIRED NO.CORRECTION L:APPLICATION SERIAL NO.CORRECTION
T:APPLICATION CORRECTION Z:REMARKS CHANGE

PARTS CATALOGUE NEWS

BOOK No. : 13Z1V401

Block No.	Ref. No.	Note	Part No.	Description	Reqd. QTY 6XV 160 H2	Serial No.	Parts catalogue code
		D	30701-883-000	CLIP, HIGH TENSION CORD (8MM)	1	-----	A14, C12, SFC

E-22 CONTROL (1)



E-22	14	T	36100-ZE7-013	SWITCH ASSY., ENGINE STOP	1	-----	N1, N4, N5, N6, N6S, SFL, SFL1, SFY1
	16	E	36101-ZE7-812	*PARTS NO. DELETION			
		D	32195-Z1V-810	CORD, STOP SWITCH (BRAKE)	1	-----	C12, SFC
	17	T	36103-ZE1-000	HOLDER, STOP SWITCH CORD	1	-----	N1, N4, N5, N6, SFL, SFL1, SFY1
	28	D	46392-SC2-003	CLAMP, BRAKE PIPE (GRAY)	1	-----	N1, N4, N5, N6, N6S, SFL, SFL1, SFY1
	29	D	90505-MCT-000	CLAMP, PIPE	1	-----	C12, SFC

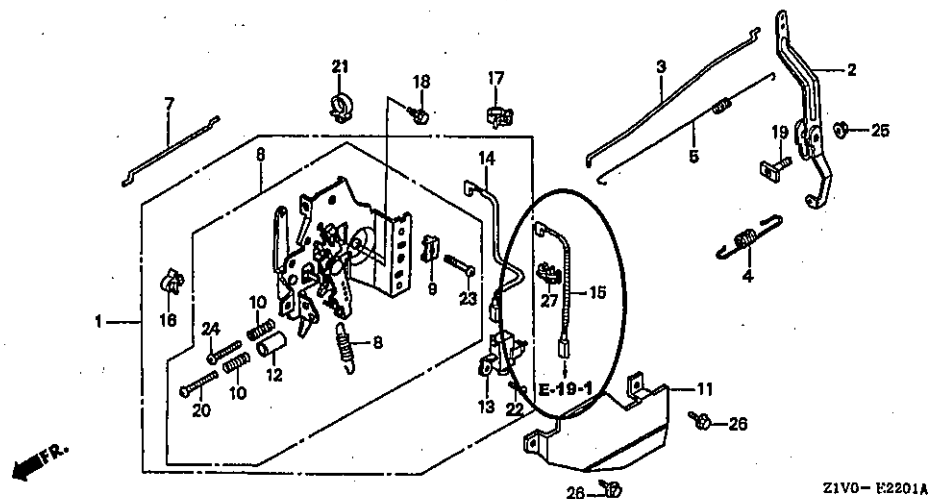
NOTE A:PART NO.CHANGE D:NEWLY PROVIDED E:PART NO.DELETION K:REQUIRED NO.CORRECTION L:APPLICATION SERIAL NO.CORRECTION
T:APPLICATION CORRECTION Z:REMARKS CHANGE

PARTS CATALOGUE NEWS

BOOK No. : 13Z1V401

Block No.	Ref. No.	Note	Part No.	Description	Reqd. QTY		Serial No.	Parts catalogue code
					GVV	160		
					H2			

E-22-1 CONTROL (2)



Z1V0- E2201A

E-22-1	13	T	36100-ZE7-013	SWITCH ASSY., ENGINE STOP	1	-----	-----	N1F
	15	E	36101-ZE7-812	*PARTS NO. DELETION				
		D	32195-Z1V-810	CORD, STOP SWITCH (BRAKE)	1	-----	-----	A14
	16	T	36103-ZE1-000	HOLDER, STOP SWITCH CORD	1	-----	-----	N1F
	17	T	46392-SC2-003	CLAMP, BRAKE PIPE (GRAY)	1	-----	-----	N1F
	27	D	90505-MGT-000	CLAMP, PIPE	1	-----	-----	A14

NOTE A:PART NO.CHANGE D:NEWLY PROVIDED E:PART NO.DELETION K:REQUIRED NO. CORRECTION L:APPLICATION SERIAL NO. CORRECTION
T:APPLICATION CORRECTION Z:REMARKS CHANGE



PARTS CATALOGUE NEWS

Honda Motor Co., Ltd. Service Division

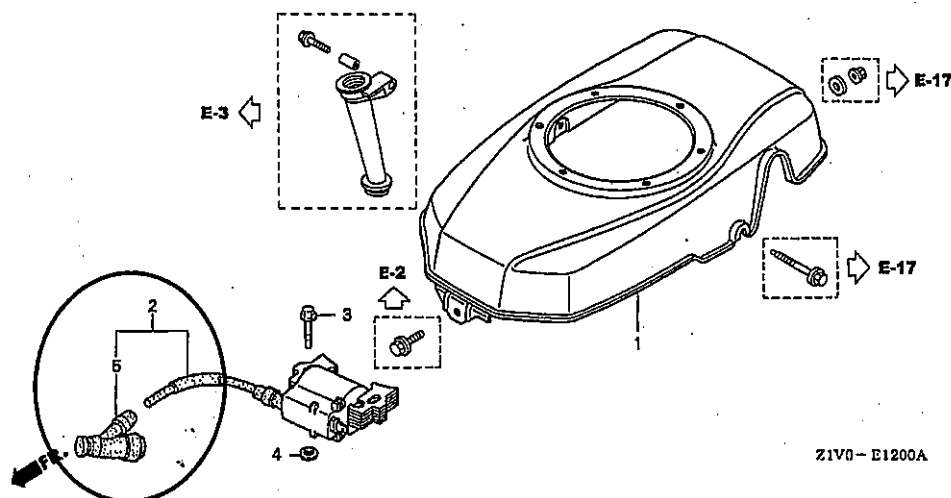
PARTS CATALOGUE - CORRECTED

Printed in Japan

CODE NO.	BOOKLET TYPE	13Z1V401
	MICRO-FICHE	13Z1V4EA/FA
PARTS CATALOGUE NEWS	GXV160H2	
NEWS NO.	002	

Block No.	Ref. No.	Note	Part No.	Description	Reqd. QTY GXV 160 H2	Serial No.	Parts catalogue code
-----------	----------	------	----------	-------------	-------------------------------	------------	----------------------

E-12 FAN COVER



Z1V0-E1200A

E-12 3 E 30700-Z1V-003 *PARTS NO. DELETION

NOTE A:PART NO.CHANGE D:NEWLY PROVIDED E:PART NO.DELETION K:REQUIRED NO.CORRECTION L:APPLICATION SERIAL NO.CORRECTION
T:APPLICATION CORRECTION Z:REMARKS CHANGE

BOOKNo.:13Z1V401

PARTS CATALOGUE NEWS

Block No.	Ref. No.	Note	Part No.	Description	Reqd. QTY	Serial No.	Parts catalogue code
					GXY 160 H2		
		D	90015-883-000	BOLT, FLANGE, 6X28	2		
	4	E	90015-883-000	*PARTS NO. DELETION			
		D	90581-GB5-610	WASHER, PLAIN, 6MM	2		
	5	D	30700-Z1V-003	CAP ASSY., NOISE SUPPRESSOR ..	1		
		E	90581-GB5-610	*PARTS NO. DELETION			

NOTE A:PART NO.CHANGE D:NEWLY PROVIDED E:PART NO.DELETION K:REQUIRED NO.CORRECTION L:APPLICATION SERIAL NO.CORRECTION
T:APPLICATION CORRECTION Z:REMARKS CHANGE

October 12, 2003



PARTS CATALOGUE NEWS

Honda Motor Co., Ltd. Service Division

PARTS CATALOGUE - CORRECTED

Printed in Japan

CODE NO.	BOOKLET TYPE	13Z1V401
	MICRO- FICHE	13Z1V4EA/FA
PARTS CATALOGUE NEWS	GXV160H2	
NEWS NO.	003	

Block No.	Ref. No.	Note	Part No.	Description	Reqd. QTY GXV 160 H2	Serial No.	Parts catalogue code
E-2	6	E	12311-ZG9-000	*PARTS NO. DELETION			
		D	12311-ZG9-800	COVER, HEAD	1		
E-3	5	T	12125-Z1V-000	PLATE, GUIDE	1	-----	N1, N1F, N4, N5, N6, N6S, SFL, SFL1, SFY1
	25	E	43143-ZE7-000	*PARTS NO. DELETION			
		D	43143-Z1V-000	BASE COMP., HOLDER	1	-----	A14, C12, SFC
	28	T	90022-888-010	BOLT, FLANGE, 6X20 (CT200)	2	-----	N1, N1F, N4, N5, N6, N6S, SFL, SFL1, SFY1
E-17	2	E	16952-Z1V-000	*PARTS NO. DELETION			
		D	16952-ZA8-800	STRAINER, FUEL	1		

NOTE A:PART NO.CHANGE D:NEWLY PROVIDED E:PART NO.DELETION K:REQUIRED NO.CORRECTION L:APPLICATION SERIAL NO.CORRECTION
T:APPLICATION CORRECTION Z:REMARKS CHANGE

February 08, 2004



PARTS CATALOGUE NEWS

Honda Motor Co., Ltd. Service Division

PARTS CATALOGUE - CORRECTED

Printed in Japan

CODE NO.	BOOKLET TYPE	13Z1V401
	MICRO- FICHE	13Z1V4EA/FA
PARTS CATALOGUE NEWS	GXV160H2	
NEWS NO.	004	

Block No.	Ref. No.	Note	Part No.	Description	Reqd. QTY GXV 160 H2	Serial No.	Parts catalogue code
E-17	13	E	17636-21V-000	*PARTS NO. DELETION			
		D	17636-21V-010	GAUGE, FUEL LEVEL	1		
E-19-1	4	E	36100-21V-810	*PARTS NO. DELETION			
		D	35120-21V-811	SWITCH ASSY., ENGINE STOP (BRAKE)	1	-----	A14, C12, SFC

NOTE A:PART NO.CHANGE D:NEWLY PROVIDED E:PART NO.DELETION K:REQUIRED NO.CORRECTION L:APPLICATION SERIAL NO.CORRECTION
T:APPLICATION CORRECTION Z:REMARKS CHANGE

February 29, 2004



PARTS CATALOGUE NEWS

Honda Motor Co., Ltd. Service Division

PARTS CATALOGUE - CORRECTED

Printed in Japan

CODE NO.	BOOKLET TYPE	13Z1V401
	MICRO- FICHE	13Z1V4EA/FA
PARTS CATALOGUE NEWS	GXV160H2	
NEWS NO.	005	

Block No.	Ref. No.	Note	Part No.	Description	Reqd. QTY GXV 160 H2	Serial No.	Parts catalogue code
E-12	4	E	90581-GB5-610	*PARTS NO. DELETION			
		D	90581-Z1V-000	WASHER, PLAIN, 6MM	2		

NOTE A: PART NO. CHANGE D: NEWLY PROVIDED E: PART NO. DELETION K: REQUIRED NO. CORRECTION L: APPLICATION SERIAL NO. CORRECTION
T: APPLICATION CORRECTION Z: REMARKS CHANGE



PARTS CATALOGUE NEWS

Honda Motor Co., Ltd. Service Division

PARTS CATALOGUE - CORRECTED

Printed in Japan

CODE NO.	BOOKLET TYPE	13Z1V401
	MICRO- FICHE	13Z1V4EA/FA
PARTS CATALOGUE NEWS	GXV160H2	
NEWS NO.	006	

GXV160H2-T1AH TYPE sales parts information

NOTE: This Parts Catalogue News explains only the parts of the different model that are produced to conform to addition of the GXV160H2-T1AH type.

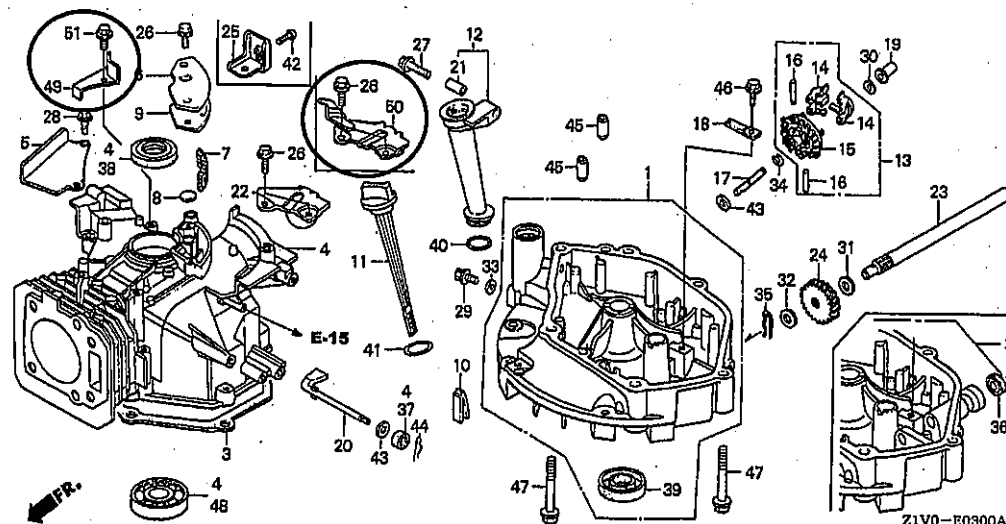
As for the parts not listed on this Parts Catalogue News, use the parts of the GXV160H2-N1 type.

Model	Type		Parts catalogue type	Applicable engine serial No.	Applicable carburetor identification No.
GXV160H2	N1	Base model	N1	GJAAH-1000001~	BE66J A
	T1AH	Additional model	T1AH	GJAAH-1000001~	

NOTE A: PART NO. CHANGE D: NEWLY PROVIDED E: PART NO. DELETION K: REQUIRED NO. CORRECTION L: APPLICATION SERIAL NO. CORRECTION
T: APPLICATION CORRECTION Z: REMARKS CHANGE

Block No.	Ref. No.	Part No.	Description	Reqd. QTY	Base Part No.	Parts catalogue code
				GXV 160 H2		

E-3 CYLINDER BARREL



E-3	22	STAY COMP., TANK	0	17517-ZE7-000
	49	12126-Z1V-000 PLATE A, GUIDE	1	
	50	17560-Z1V-000 STAY COMP., TANK	1	
	51	90013-883-000 BOLT, FLANGE, 6X12(OT200)	1	
E-7	5	CRANKSHAFT COMP.	0	13310-ZE7-010
	13	13310-ZE7-V20 CRANKSHAFT COMP.	1	
E-11	1	STARTER ASSY., RECOIL *R280*.....POWER RED	0	28400-ZE7-003ZC
	2	CASE COMP., RECOIL STARTER *R280*.....POWER RED	0	28410-ZE7-003ZD
	3	PULLEY, RECOIL STARTER	0	28420-ZE7-003
	4	RATCHET, STARTER	0	28422-896-010
	5	PLATE, FRICTION	0	28431-896-000

NOTE A:PART NO. CHANGE D:NEWLY PROVIDED E:PART NO. DELETION K:REQUIRED NO. CORRECTION L:APPLICATION SERIAL NO. CORRECTION
T:APPLICATION CORRECTION Z:REMARKS CHANGE

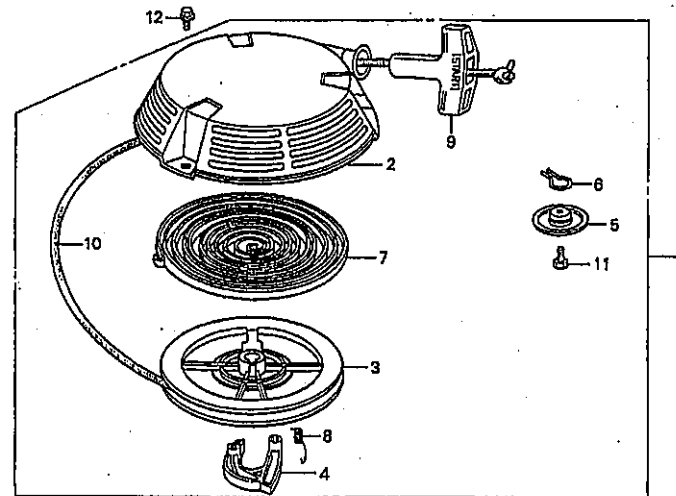
PARTS CATALOGUE NEWS

BOOKNo. :1321V401

Block No.	Ref. No.	Part No.	Description	Reqd. QTY	Base Part No.	Parts catalogue code
	6		SPRING, FRICTION	0	28441-896-000	
	7		SPRING, RECOIL STARTER	0	28442-896-700	
	8		SPRING, RETURN	0	28443-896-000	
	9		KNOB, RECOIL STARTER	0	28461-ZE1-003	
	10		ROPE, RECOIL STARTER	0	28462-ZA7-003	
	11		BOLT, HEX., 6X12	0	92101-06012-0H	
	12		BOLT, FLANGE, 6X8	0	95701-06008-00	

E-11-1 RECOIL STARTER (2)

Service	Item	F.R.T.
	STARTER ASSY., RECOIL.....	0.1
	RATCHET, STARTER.....	0.2
	SPRING, RETURN	
	PULLEY, RECOIL STARTER.....	0.3
	ROPE, RECOIL STARTER	
	SPRING, RECOIL STARTER	



-Z1V0-E1101

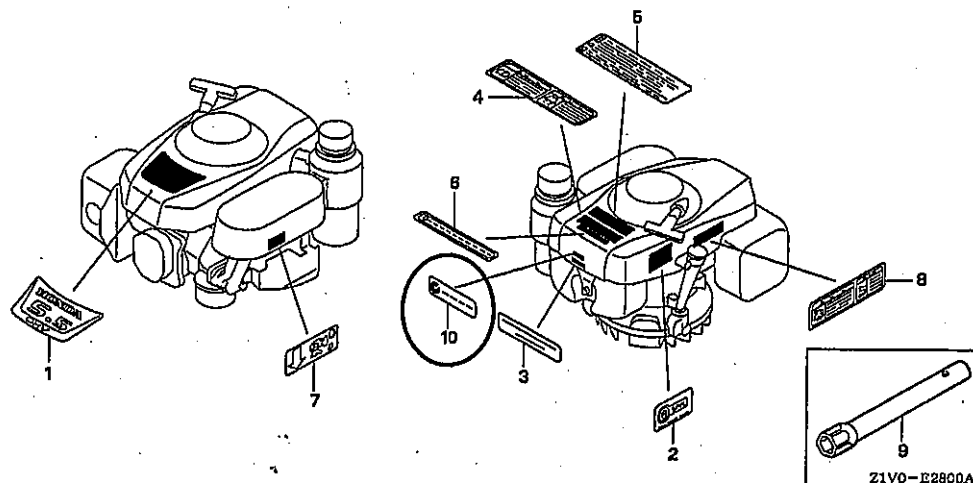
E-11-1	1	28400-ZE7-003ZB	STARTER ASSY., RECOIL *NH1*,.....BLACK	1
	2	28410-ZE7-003ZB	CASE COMP., RECOIL STARTER *NH1*,.....BLACK	1
	3	28420-ZE7-003	PULLEY, RECOIL STARTER	1
	4	28422-896-010	RATCHET, STARTER	1

NOTE A:PART NO.CHANGE D:NEWLY PROVIDED E:PART NO.DELETION K:REQUIRED NO.CORRECTION L:APPLICATION SERIAL NO.CORRECTION
T:APPLICATION CORRECTION Z:REMARKS CHANGE

PARTS CATALOGUE NEWS

Block No.	Ref. No.	Part No.	Description	Reqd. QTY GXY 150 H2	Base Part No.	Parts catalogue code
	5	28431-896-000	PLATE, FRICTION	1		
	6	28441-896-000	SPRING, FRICTION	1		
	7	28442-896-700	SPRING, RECOIL STARTER	1		
	8	28443-896-000	SPRING, RETURN	1		
	9	28461-ZE1-003	KNOB, RECOIL STARTER	1		
	10	28462-ZA7-003	ROPE, RECOIL STARTER	1		
	11	92101-06012-0H	BOLT, HEX., 6X12	1		
	12	95701-06008-00	BOLT, FLANGE, 6X8	3		
E-12	1	19610-Z1V-000ZB	COVER COMP., FAN *NH1*.....BLACK	1	19610-Z1V-000ZA	
E-17	4	17510-Z1V-010	TANK COMP., FUEL	1	17510-Z1V-000	

E-28 LABEL



E-28	10	87637-ZM3-800	MARK (C-TICK)	1		
------	----	---------------	---------------------	---	--	--

NOTE A:PART NO. CHANGE D:NEWLY PROVIDED E:PART NO. DELETION K:REQUIRED NO. CORRECTION L:APPLICATION SERIAL NO. CORRECTION
T:APPLICATION CORRECTION Z:REMARKS CHANGE

June 13, 2004



PARTS CATALOGUE NEWS

Honda Motor Co., Ltd. Service Division

PARTS CATALOGUE - CORRECTED

Printed in Japan

CODE NO.	BOOKLET TYPE	13Z1V401
	MICRO-FICHE	13Z1V4EA/FA
PARTS CATALOGUE NEWS	GXV160H2	
NEWS NO.	007	

Block No.	Ref. No.	Note	Part No.	Description	Reqd. QTY GXV 160 H2	Serial No.	Parts catalogue code
E-17	4	E	17510-Z1V-000	*PARTS NO. DELETION			
		T	17510-Z1V-010	TANK COMP., FUEL	1		

NOTE A:PART NO. CHANGE D:NEWLY PROVIDED E:PART NO. DELETION K:REQUIRED NO. CORRECTION L:APPLICATION SERIAL NO. CORRECTION
T:APPLICATION CORRECTION Z:REMARKS CHANGE



PARTS CATALOGUE NEWS

Honda Motor Co., Ltd. Service Division

PARTS CATALOGUE - CORRECTED

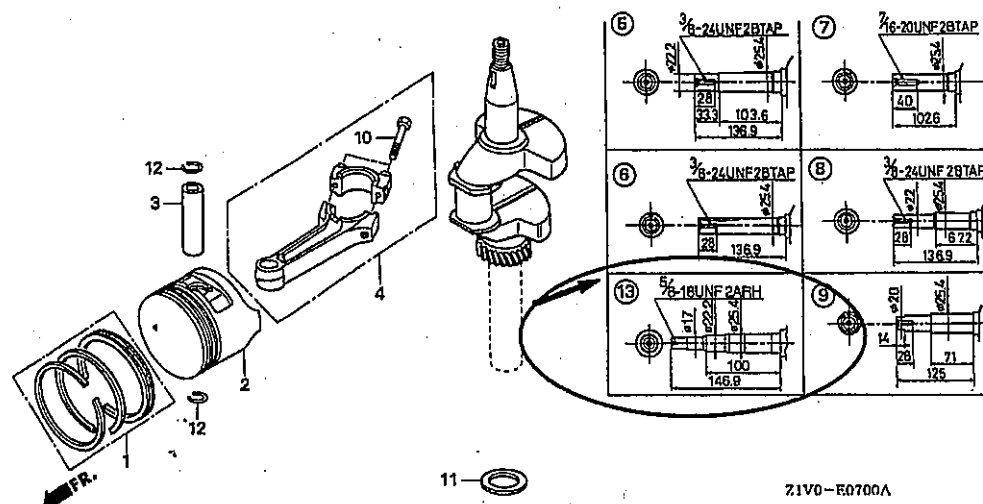
Printed in Japan

CODE NO.	BOOKLET TYPE	13Z1V401
	MICRO-FICHE	13Z1V4EA/FA
PARTS CATALOGUE NEWS	GXV160H2	
NEWS NO.	008	

Block No.	Ref. No.	Note	Part No.	Description	Reqd. QTY	Serial No.	Parts catalogue code
					GXV 160 H2		

ILLUSTRATION-CORRECTED

E-7 CRANKSHAFT/PISTON



Z1V0-E0700A

NOTE A:PART NO. CHANGE D:NEWLY PROVIDED E:PART NO. DELETION K:REQUIRED NO. CORRECTION L:APPLICATION SERIAL NO. CORRECTION
T:APPLICATION CORRECTION Z:REMARKS CHANGE

Block No.	Ref. No.	Note	Part No.	Description	Reqd. QTY	Serial No.	Parts catalogue code
					GXY 160 H2		
E-11	1	D	28400-ZE7-003ZB	STARTER ASSY., RECOIL *NH1*.....BLACK	1	-----	T1AH
	2	D	28410-ZE7-003ZB	CASE COMP., RECOIL STARTER *NH1*.....BLACK	1	-----	T1AH
	3	T	28420-ZE7-003	PULLEY, RECOIL STARTER	1		
	4	T	28422-896-010	RATCHET, STARTER	1		
	5	T	28431-896-000	PLATE, FRICTION	1		
	6	T	28441-896-000	SPRING, FRICTION	1		
	7	T	28442-896-700	SPRING, RECOIL STARTER	1		
	8	T	28443-896-000	SPRING, RETURN	1		
	9	T	28461-ZE1-003	KNOB, RECOIL STARTER	1		
	10	T	28462-ZA7-003	ROPE, RECOIL STARTER	1	-----	A14, C12, N1, N4, N5, N6, N6S, SFC, SFL, SFL1, SFY1, T1AH
	11	T	92101-06012-0H	BOLT, HEX., 6X12	1		
	12	T	95701-06008-00	BOLT, FLANGE, 6X8	3		
E-11-1	1	E	28400-ZE7-003ZB	*PARTS NO. DELETION			
	2	E	28410-ZE7-003ZB	*PARTS NO. DELETION			
	3	E	28420-ZE7-003	*PARTS NO. DELETION			
	4	E	28422-896-010	*PARTS NO. DELETION			
	5	E	28431-896-000	*PARTS NO. DELETION			
	6	E	28441-896-000	*PARTS NO. DELETION			
	7	E	28442-896-700	*PARTS NO. DELETION			
	8	E	28443-896-000	*PARTS NO. DELETION			
	9	E	28461-ZE1-003	*PARTS NO. DELETION			
	10	E	28462-ZA7-003	*PARTS NO. DELETION			
	11	E	92101-06012-0H	*PARTS NO. DELETION			
	12	E	95701-06008-00	*PARTS NO. DELETION			

NOTE A:PART NO.CHANGE D:NEWLY PROVIDED E:PART NO.DELETION K:REQUIRED NO.CORRECTION L:APPLICATION SERIAL NO.CORRECTION
T:APPLICATION CORRECTION Z:REMARKS CHANGE

July 04, 2004



PARTS CATALOGUE NEWS

Honda Motor Co., Ltd. Service Division

PARTS CATALOGUE - CORRECTED

Printed in Japan

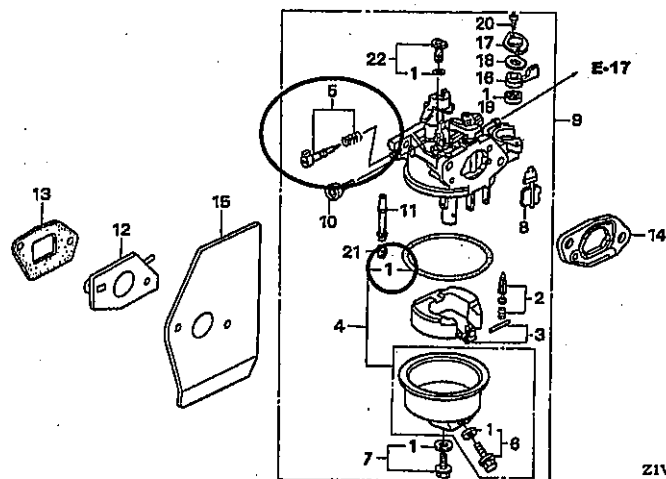
CODE NO.	BOOKLET TYPE	13Z1V401
	MICRO-FICHE	13Z1V4EA/FA
PARTS CATALOGUE NEWS	GXV160H2	
NEWS NO.	009	

Block No.	Ref. No.	Note	Part No.	Description	Reqd. QTY exy 160 H2	Serial No.	Parts-catalogue code
E-11	1	D	28400-ZE7-V112B	STARTER ASSY., RECOIL (LONG) *NH1*.....BLACK	1	-----	N1F
		T	28400-ZE7-003ZB	STARTER ASSY., RECOIL *NH1*.....BLACK	1	-----	A14, SFL1, T1AH
	2	T	28410-ZE7-003ZB	CASE COMP., RECOIL STARTER *NH1*.....BLACK	1	-----	A14, N1F, SFL1, T1AH
E-12	1	T	19610-Z1V-000ZB	COVER COMP., FAN *NH1*.....BLACK	1	-----	A14, N1F, SFL1, T1AH

NOTE A:PART NO.CHANGE D:NEWLY PROVIDED E:PART NO.DELETION K:REQUIRED NO.CORRECTION L:APPLICATION SERIAL NO.CORRECTION
T:APPLICATION CORRECTION Z:REMARKS CHANGE

Block No.	Ref. No.	Note	Part No.	Description	Reqd. QTY GXV 160 H2	Serial No.	Parts catalogue code
-----------	----------	------	----------	-------------	-------------------------------	------------	----------------------

- ILLUSTRATION-CORRECTED

E-14 CARBURETOR


E-17	1	K	16854-ZH8-000	RUBBER, SUPPORTER (107MM)	2		
------	---	---	---------------	--------------------------------	---	--	--

NOTE A: PART NO. CHANGE D: NEWLY PROVIDED E: PART NO. DELETION K: REQUIRED NO. CORRECTION L: APPLICATION SERIAL NO. CORRECTION
T: APPLICATION CORRECTION Z: REMARKS CHANGE

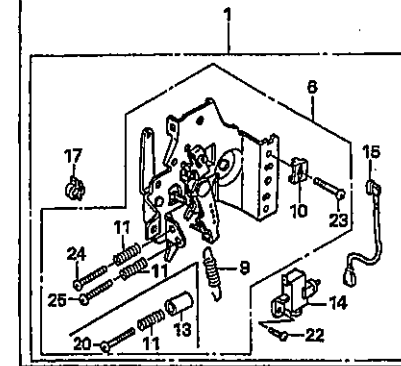
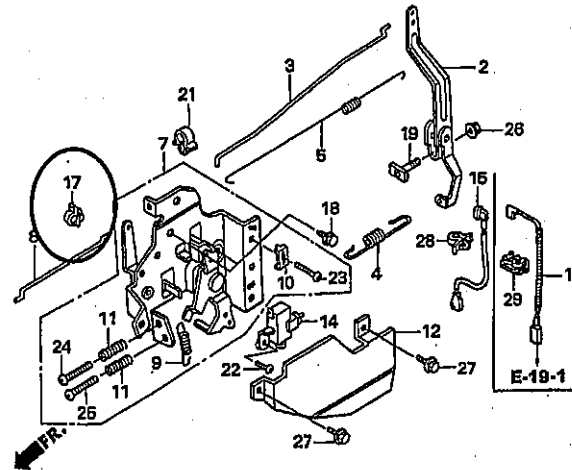
PARTS CATALOGUE NEWS

BOOK No. : 13Z1V401

Block No.	Ref. No.	Note	Part No.	Description	Reqd. QTY	Serial No.	Parts catalogue code
					GXV 160 H2		

• ILLUSTRATION-CORRECTED

E-22 CONTROL (1)



Z1V0-E2200B

E-22	14	T	36100-ZE7-013	SWITCH ASSY., ENGINE STOP	1	-----	N1, N4, N5, N6, N6S, SFL, SFL1, SFY1, T1AH
	22	T	93500-04008-0A	SCREW, PAN, 4X8	1	-----	N1, N4, N5, N6, N6S, SFL, SFL1, SFY1, T1AH
E-22-1	13	T	36100-ZE7-013	SWITCH ASSY., ENGINE STOP	1	-----	N1F
	22	T	93500-04008-0A	SCREW, PAN, 4X8	1	-----	N1F

NOTE A:PART NO.CHANGE D:NEWLY PROVIDED E:PART NO.DELETION K:REQUIRED NO.CORRECTION L:APPLICATION SERIAL NO.CORRECTION
T:APPLICATION CORRECTION Z:REMARKS CHANGE

July 25, 2004



PARTS CATALOGUE NEWS

Honda Motor Co., Ltd. Service Division

PARTS CATALOGUE - CORRECTED

Printed in Japan

CODE NO.	BOOKLET TYPE	13Z1V401
	MICRO- FICHE	13Z1V4EA/FA
PARTS CATALOGUE NEWS	GXV160H2	
NEWS NO.	010	

Block No.	Ref. No.	Note	Part No.	Description	Reqd. QTY GXV 160 H2	Serial No.	Parts catalogue code
E-3	49	T	12126-Z1V-000	PLATE A, GUIDE	1	-----	N1, N1F, N4, N5, N6, N6S, SFL, SFL1, SFY1, T1AH
		D	12126-Z1V-800	1	-----	A14, C12, SFC
	50	T	17560-Z1V-000	STAY COMP., TANK	1		
	51	T	90013-883-000	BOLT, FLANGE, 6X12 (QT200)	1		
E-17	15	T	90010-GE0-710	CLIP, TUBE	1	-----	A14, C12, SFC
E-19-1	6	E	43140-ZE7-000	*PARTS NO. DELETION			
		D	43140-Z1V-000	CAM COMP., BRAKE	1	-----	A14, C12, SFC

NOTE A:PART NO.CHANGE D:NEWLY PROVIDED E:PART NO.DELETION K:REQUIRED NO.CORRECTION L:APPLICATION SERIAL NO.CORRECTION
T:APPLICATION CORRECTION Z:REMARKS CHANGE

August 09, 2004



PARTS CATALOGUE NEWS

Honda Motor Co., Ltd. Service Division

Printed in Japan

CODE NO.	BOOKLET TYPE	13Z1V401
	MICRO- FICHE	13Z1V4EA/FA
PARTS CATALOGUE NEWS	GXV160H2	
NEWS NO.	011	

GXV160H2-A1S,A1SA,C14,N15,N45,N5M,N55 AND SFY TYPES sales parts information

NOTE: This Parts Catalogue News explains only the parts of the different model that are produced to conform to addition of the GXV160H2-A1S,A1SA,C14,N15,N45,N5M,N55 and SFY types.

As for the parts not listed on this Parts List News, use the parts of the GXV160H2-A14,N1,N1F and SFY1 types.

NOTE A:PART NO.CHANGE D:NEWLY PROVIDED E:PART NO.DELETION K:REQUIRED NO.CORRECTION L:APPLICATION SERIAL NO.CORRECTION
T:APPLICATION CORRECTION Z:REMARKS CHANGE

Model	Type		Parts catalogue type	Applicable engine serial No.	Applicable carburetor identification No.
GXV160H2	A14	Base model	A14	GJAAH-1000001~	BE66J A
	A1S	Additional model	A1S		
	N1F	Base model	N1F		
	A1SA	Additional model	A1SA		
	A14	Base model	A14		
	C14	Additional model	C14		
	N1	Base model	N1		
	N15	Additional model	N15		
	N45		N45		
	N1F	Base model	N1F		
	N5M	Additional model	N5M		BE66M A
	N1	Base model	N1		BE66J A
	N55	Additional model	N55		
	SFY1	Base model	SFY1		
	SFY	Additional model	SFY		

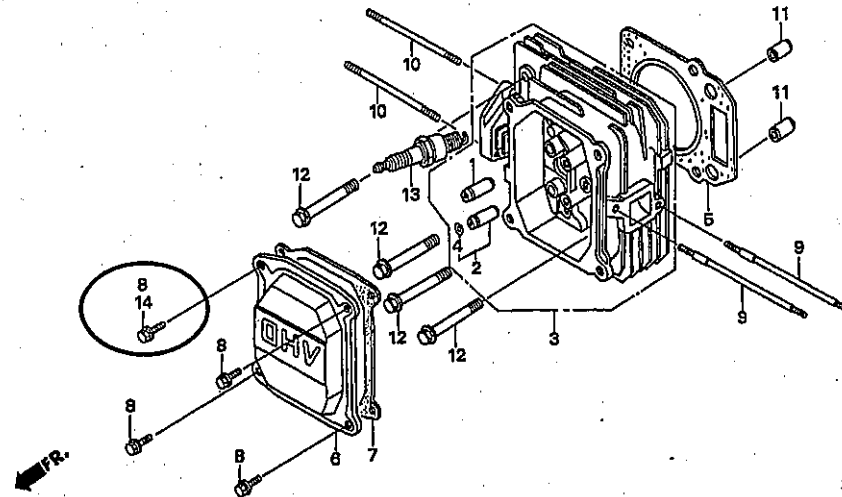
NOTE A:PART NO. CHANGE D:NEWLY PROVIDED E:PART NO. DELETION K:REQUIRED NO. CORRECTION L:APPLICATION SERIAL NO. CORRECTION
T:APPLICATION CORRECTION Z:REMARKS CHANGE

PARTS CATALOGUE NEWS

BOOKNo. :13Z1V401

Block No.	Ref. No.	Part No.	Description	Reqd. QTY GXV 160 H2	Base Part No.	Parts catalogue code
-----------	----------	----------	-------------	-------------------------------	---------------	----------------------

E-2 CYLINDER HEAD



Z1V0-E0200B

E-2	8	90013-883-000	BOLT, FLANGE, 6X12(CT200)	3	90013-883-000	
	14	90014-952-000	BOLT, FLANGE, 6X14(CT200)	1		
E-3	1	11300-Z1V-U90	PAN ASSY., OIL	1	11300-Z1V-000	N5M
		11300-Z1V-V50	1		SFY
	2		PAN ASSY., OIL	0	11300-Z1V-800	SFY
	4	12000-Z2J-000	BARREL ASSY., CYLINDER	1	12000-Z1V-000	N15, N45, N5M, N55, SFY
	5		PLATE, GUIDE	0	12125-Z1V-000	A1SA
	23		SHAFT, DRIVE	0	23411-ZE7-000	SFY
	24		GEAR, DRIVEN (18T)	0	23421-ZE6-000	SFY
	25	43143-Z1V-000	BASE COMP., HOLDER	1		A1SA
	28		BOLT, FLANGE, 6X20(CT200)	0	90022-888-010	A1SA
	31		WASHER, THRUST, 12MM	0	90452-166-600	SFY

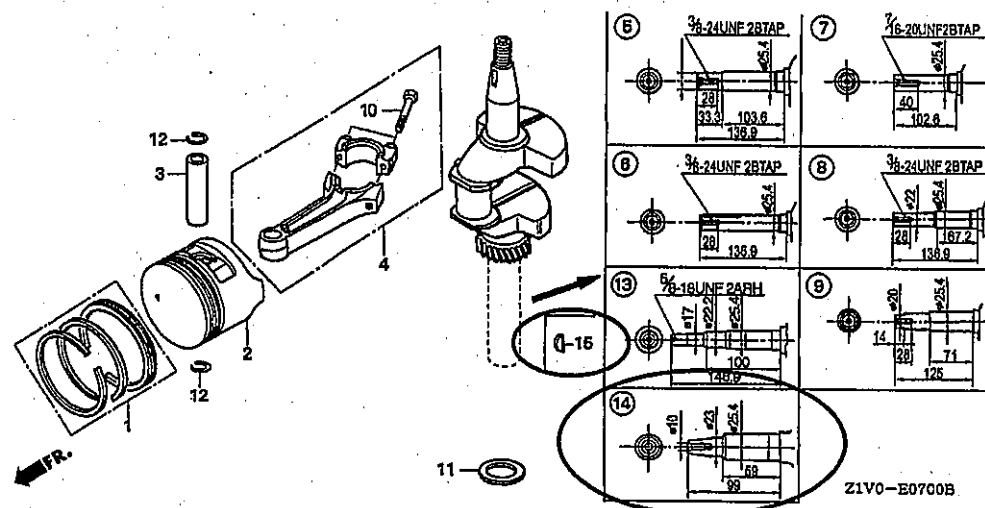
NOTE A:PART NO.CHANGE D:NEWLY PROVIDED E:PART NO.DELETION K:REQUIRED NO.CORRECTION L:APPLICATION SERIAL NO.CORRECTION
T:APPLICATION CORRECTION Z:REMARKS CHANGE

PARTS CATALOGUE NEWS

Block No.	Ref. No.	Part No.	Description	Reqd. QTY	Base Part No.	Parts catalogue code
				8XV 160 H2		
	32		WASHER, 10X21	0	90452-187-000	SFY
	35		PIN, LOCK, 2.0	0	90701-ZE6-000	SFY
	36		OIL SEAL, 12X20X6.5	0	91205-Z1V-003	SFY
	42	93500-05016-0A	SCREW, PAN, 5X16	1		A1SA
	49	12126-Z1V-800	PLATE A, GUIDE	1	12126-Z1V-000	A1SA

E-7

CRANKSHAFT/PISTON



E-7	5		CRANKSHAFT COMP.	0	13310-ZE7-010	N45, N5M, N55
	6	13310-ZE7-641	CRANKSHAFT COMP.	1		N45
	7	13310-ZE7-661	CRANKSHAFT COMP.	1		N55
	14	13310-ZE7-U41	CRANKSHAFT COMP.	1		N5M
	15	90741-ZV4-000	KEY, SPECIAL, 16X15	1		A1SA
E-11	1		STARTER ASSY., RECOIL		28400-ZE7-003ZB	
			NH1.....BLACK	0		C14

NOTE A:PART NO. CHANGE D:NEWLY PROVIDED E:PART NO.DELETION K:REQUIRED NO.CORRECTION L:APPLICATION SERIAL NO. CORRECTION
T:APPLICATION CORRECTION Z:REMARKS CHANGE

PARTS CATALOGUE NEWS

BOOK No. : 13Z1V401

Block No.	Ref. No.	Part No.	Description	Reqd. QTY OXV 160 H2	Base Part No.	Parts catalogue code
		28400-Z1V-J51ZA	STARTER ASSY., RECOIL (LONG, HEPE)		28400-ZE7-V11ZB	
			R280..... POWER RED	1		A1SA, N5M
		28400-Z1V-J51ZA	*R280*..... POWER RED	1	28400-ZE7-003ZB	A1S
		28400-Z1V-J51ZA	*R280*..... POWER RED	1	28400-ZE7-003ZC	N15, N45, N55
		28400-Z1V-J51ZB	STARTER ASSY., RECOIL (LONG)			
			NH1..... BLACK	1		N15, N45, N55
		28400-Z1V-J51ZB	*NH1*..... BLACK	1	28400-ZE7-V11ZC	A1SA, N5M
		28400-Z1V-J51ZB	*NH1*..... BLACK	1	28400-ZE7-003ZC	A1S
	2		CASE COMP., RECOIL STARTER		28410-ZE7-003ZB	
			NH1..... BLACK	0		C14
		28410-ZE7-003ZB	*NH1*..... BLACK	1		N15, N45, N55
	9	28461-ZE7-T00	GRIP, STARTER	1	28461-ZE1-003	A1S, A1SA, N5M
	10	28462-ZE7-V11	ROPE, RECOIL STARTER	1	28462-ZA7-003	A1S, N15, N45, N55
E-12	1		COVER COMP., FAN		19610-Z1V-000ZB	
			NH1..... BLACK	0		C14
		19610-Z1V-000ZB	*NH1*..... BLACK	1		N15, N45, N55
E-14	9	16100-Z1V-J71	CARBURETOR ASSY. (BE66M A) ...	1	16100-Z1V-003	N5M
	11	16166-Z1V-J71	NOZZLE, MAIN	1	16166-Z1V-003	N5M
	21	99101-ZH8-0650	JET, MAIN, #65	(1)	99101-ZH8-0600	N5M
		99101-ZH8-0680	JET, MAIN, #68	1	99101-ZH8-0650	N5M
E-16	2	18292-ZE7-MT0	PACKING, PROTECTOR	2		N15, N45, N55, SFY
E-17	2	16952-Z1V-000	STRAINER, FUEL	1	16952-ZA8-800	
E-19	1		KEY, SPECIAL WOODRUFF, 25X18 .	0	13331-357-000	A1SA
	2		FAN, COOLING	0	19511-Z1T-000	A1SA
	3		PULLEY COMP., STARTER	0	28451-ZE7-003	A1SA
	4		FLYWHEEL COMP.	0	31110-Z1V-003	A1SA

NOTE A:PART NO.CHANGE D:NEWLY PROVIDED E:PART NO.DELETION K:REQUIRED NO.CORRECTION L:APPLICATION SERIAL NO.CORRECTION
T:APPLICATION CORRECTION Z:REMARKS CHANGE

PARTS CATALOGUE NEWS

BOOKNo. :13Z1V401

Block No.	Ref. No.	Part No.	Description	Reqd. QTY GXV 160 H2	Base Part No.	Parts catalogue code
	6		NUT, SPECIAL, 14MM	0	90201-Z1T-000	A1SA
E-19-1	1	13331-357-000	KEY, SPECIAL WOODRUFF, 25X18 .	1		A1SA
	2	28451-ZE7-003	PULLEY COMP., STARTER	1		A1SA
	3	31110-Z1V-810	FLYWHEEL COMP. (BRAKE)	1		A1SA
	4	35120-Z1V-811	SWITCH ASSY., ENGINE STOP (BRAKE)	1		A1SA
	5	36121-ZE6-000	SPRING, SWITCH CONTROL	1		A1SA
	6	43140-Z1V-000	CAM COMP., BRAKE	1		A1SA
	7	43145-ZE7-003	ROD, THROTTLE RETURN	1		A1SA
	8	75112-ZE6-000	SPRING, BRAKE	1		A1SA
	9	75113-ZE6-000	SPRING, BRAKE RETURN	1		A1SA
	10	75120-ZE6-013	BRAKE COMP.	1		A1SA
	11	75130-ZE7-000	BASE COMP., BRAKE	1		A1SA
	12	90015-ZE6-000	BOLT, FLANGE, 6MM	1		A1SA
	13	90018-ZE1-000	BOLT, FLANGE, 6X23(CT200)	2		A1SA
	14	90201-Z1T-000	NUT, SPECIAL, 14MM	1		A1SA
	15	30701-883-000	CLIP, HIGH TENSION CORD (8MM)	1		A1SA
	16	90653-723-000	E-RING, 10MM	1		A1SA
	17	90702-ZE6-000	DOWEL PIN, 8X9	2		A1SA
	18	93500-04008-0A	SCREW, PAN, 4X8	1		A1SA
	19	94102-12800	WASHER, PLAIN, 12MM	1		A1SA
E-22	2		ARM, GOVERNOR	0	16551-ZE7-000	N15, N45, N55
		16551-ZE7-000	1		N5M
	3		ROD, GOVERNOR	0	16555-ZE7-000	N15, N45, N55
		16555-ZE7-000	1		N5M

NOTE A:PART NO. CHANGE D:NEWLY PROVIDED E:PART NO. DELETION K:REQUIRED NO. CORRECTION L:APPLICATION SERIAL NO. CORRECTION
T:APPLICATION CORRECTION Z:REMARKS CHANGE

PARTS CATALOGUE NEWS

BOOKNo. : 13Z1V401

Block No.	Ref. No.	Part No.	Description	Reqd. QTY QTY 160 H2	Base Part No.	Parts catalogue code
	4		SPRING, GOVERNOR	0	16561-ZE7-020	N15, N45, N55
		16561-ZE7-711	1		N5M
	5		SPRING, THROTTLE RETURN	0	16562-ZE6-000	N15, N45, N55
		16562-ZE6-000	1		N5M
	6	16570-ZE7-772	CONTROL COMP.	1		N5M
	7		CONTROL ASSY.	0	16570-ZE7-020	N15, N45, N55
	8		ROD, CHOKE	0	16573-ZE7-000	N15, N45, N55
		16573-ZE7-000	1		N5M
	9		SPRING, LEVER	0	16576-ZE7-300	N15, N45, N55
		16576-ZE7-300	1		N5M
	10		HOLDER, CABLE	0	16576-891-000	N15, N45, N55
		16576-891-000	1		N5M
	11		SPRING, CONTROL ADJUSTING	0	16584-883-300	N15, N45, N55
		16584-883-300	2		N5M
	12		PROTECTOR, CONTROL	0	16585-ZE7-000	N15, N45, N55
		16585-ZE7-000	1		N5M
	14		SWITCH ASSY., ENGINE STOP	0	36100-ZE7-013	N15, N45, N55
		36100-ZE7-013	1		N5M
	15		CORD, STOP SWITCH	0	36101-ZE7-020	N15, N45, N55
		36101-ZE7-020	1		N5M
	17		HOLDER, STOP SWITCH CORD	0	36103-ZE1-000	N15, N45, N55
		36103-ZE1-000	1		N5M
	18		BOLT, FLANGE, 6X12(OT200)	0	90013-883-000	N15, N45, N55
		90013-883-000	2		N5M

NOTE A:PART NO.CHANGE D:NEWLY PROVIDED E:PART NO.DELETION K:REQUIRED NO.CORRECTION L:APPLICATION SERIAL NO.CORRECTION
T:APPLICATION CORRECTION Z:REMARKS CHANGE

PARTS CATALOGUE NEWS

BOOKNo. :13Z1V401

Block No.	Ref. No.	Part No.	Description	Reqd. QTY QTY 160 H2	Base Part No.	Parts catalogue code
	19		BOLT, GOVERNOR ARM	0	90015-ZE5-010	N15, N45, N55
		90015-ZE5-010	1		N5M
	21		CLIP, WIRE HARNESS	0	90659-680-013	N15, N45, N55
		90659-680-013	1		N5M
	22		SCREW, PAN, 4X8	0	93500-04008-0A	N15, N45, N55
		93500-04008-0A	1		N5M
	23		SCREW, PAN, 5X16	0	93500-05016-0A	N15, N45, N55
		93500-05016-0A	1		N5M
	24		SCREW, PAN, 5X20	0	93500-05020-0A	N15, N45, N55
		93500-05020-0A	1		N5M
	25		SCREW, PAN, 5X28	0	93500-05028-0A	N15, N45, N55
		93500-05028-0A	1		N5M
	26		NUT, FLANGE, 6MM	0	94050-06000	N15, N45, N55
		94050-06000	1		N5M
	27		BOLT, FLANGE, 6X10	0	95701-06010-00	N15, N45, N55
		95701-06010-00	2		N5M
	28		CLAMP, BRAKE PIPE (GRAY)	0	46392-SC2-003	N15, N45, N55
		46392-SC2-003	1		N5M
E-22-1	1		CONTROL ASSY. (EN) (STD.)	0	16500-ZE7-W11	A1SA, N5M
		16500-ZE7-W11	1		N15, N45, N55
	2		ARM, GOVERNOR	0	16551-ZE7-000	N5M
		16551-ZE7-000	1		N15, N45, N55
	3		ROD, GOVERNOR	0	16555-ZE7-000	N5M
		16555-ZE7-000	1		N15, N45, N55

NOTE A:PART NO. CHANGE D:NEWLY PROVIDED E:PART NO. DELETION K:REQUIRED NO. CORRECTION L:APPLICATION SERIAL NO. CORRECTION
T:APPLICATION CORRECTION Z:REMARKS CHANGE

PARTS CATALOGUE NEWS

BOOKNo. :13Z1V401

Block No.	Ref. No.	Part No.	Description	Reqd. QTY GXV 160 H2	Base Part No.	Parts catalogue code
	4		SPRING, GOVERNOR	0	16561-ZE7-020	N5M
		16561-ZE7-020	1		N15, N45, N55
	5		SPRING, THROTTLE RETURN	0	16562-ZE6-000	N5M
		16562-ZE6-000	1		N15, N45, N55
	6		CONTROL COMP. (STD.)	0	16570-ZE7-W00	N5M
		16570-ZE7-W00	1		N15, N45, N55
		16570-ZE7-W20	CONTROL COMP. (EN) (BRILL)	1	16570-ZE7-W00	A1S, A1SA
	7		ROD, CHOKE	0	16573-ZE7-000	N5M
		16573-ZE7-000	1		N15, N45, N55
	8		SPRING, LEVER	0	16576-ZE7-300	N5M
		16576-ZE7-300	1		N15, N45, N55
	9		HOLDER, CABLE	0	16576-891-000	N5M
		16576-891-000	1		N15, N45, N55
	10		SPRING, CONTROL ADJUSTING	0	16584-883-300	N5M
		16584-883-300	2		N15, N45, N55
	11		PROTECTOR, CONTROL	0	16585-ZE7-000	C14, N5M
		16585-ZE7-000	1		N15, N45, N55
	12		COLLAR, STOPPER	0	16599-ZG1-M10	N5M
		16599-ZG1-M10	1		N15, N45, N55
	13		SWITCH ASSY., ENGINE STOP	0	36100-ZE7-013	A1SA, N5M
		36100-ZE7-013	1		N15, N45, N55
	14		CORD, STOP SWITCH	0	36101-ZE7-020	A1SA, N5M
		36101-ZE7-020	1		N15, N45, N55
	15	32195-Z1V-810	CORD, STOP SWITCH (BRAKE)	1		A1SA

NOTE A:PART NO.CHANGE D:NEWLY PROVIDED E:PART NO.DELETION K:REQUIRED NO.CORRECTION L:APPLICATION SERIAL NO.CORRECTION
T:APPLICATION CORRECTION Z:REMARKS CHANGE

PARTS CATALOGUE NEWS

Block No.	Ref. No.	Part No.	Description	Reqd. QTY 6XV 180 H2	Base Part No.	Parts catalogue code
	16	36103-ZE1-000	HOLDER, STOP SWITCH CORD	1		N15, N45, N55
	17		CLAMP, BRAKE PIPE (GRAY)	0	46392-SC2-003	A1SA, N5M
		46392-SC2-003	1		N15, N45, N55
	18		BOLT, FLANGE, 6X12 (CT200)	0	90013-883-000	N5M
		90013-883-000	2		N15, N45, N55
	19		BOLT, GOVERNOR ARM	0	90015-ZE5-010	N5M
		90015-ZE5-010	1		N15, N45, N55
	20		SCREW, RECESSED, 5X28	0	90016-ZE7-W00	N5M
		90016-ZE7-W00	1		N15, N45, N55
	21		CLIP, WIRE HARNESS	0	90659-680-013	N5M
		90659-680-013	1		N15, N45, N55
	22		SCREW, PAN, 4X8	0	93500-04008-0A	A1SA, N5M
		93500-04008-0A	1		A1S, C14, N15, N45, N55
	23		SCREW, PAN, 5X16	0	93500-05016-0A	N5M
		93500-05016-0A	1		N15, N45, N55
	24		SCREW, PAN, 5X20	0	93500-05020-0A	N5M
		93500-05020-0A	1		N15, N45, N55
	25		NUT, FLANGE, 6MM	0	94050-06000	N5M
		94050-06000	1		N15, N45, N55
	26		BOLT, FLANGE, 6X10	0	95701-06010-00	C14, N5M
		95701-06010-00	2		N15, N45, N55
	27	90505-MCT-000	CLAMP, PIPE	1		A1SA
E-28	2		LABEL, E-SPEC (15.5X27.5)	0	87135-ZE2-020	A1S, A1SA, N15, N45, N5M, N55, SFY
	4		MARK A, COMBINATION (JAPANESE)	0	87520-Z1V-000	SFY

NOTE A:PART NO. CHANGE D:NEWLY PROVIDED E:PART NO. DELETION K:REQUIRED NO. CORRECTION L:APPLICATION SERIAL NO. CORRECTION
T:APPLICATION CORRECTION Z:REMARKS CHANGE

PARTS CATALOGUE NEWS

BOOKNo. :13Z1V401

Block No.	Ref. No.	Part No.	Description	Reqd. QTY 6XV 180 H2	Base Part No.	Parts catalogue code
	5	87522-Z1V-000	LABEL, CAUTION	1		SFY
	6	87522-Z1V-800	LABEL, CAUTION (CHINESE)	1		C14
	8		MARK B, COMBINATION (JAPANESE)	0	87526-Z1V-000	SFY
	9		WRENCH, BOX (P21)	0	99004-21003	A1S, A1SA
E-40	1		COLLAR, FAN	0	19512-883-000	SFY
	2		HOLDER ASSY., BLADE	0	72600-VA4-010	SFY
	3		HOLDER COMP., BLADE	0	72610-VA4-000	SFY
	4		BUSH, BLADE HOLDER	0	72613-VA4-000	SFY
	5		PLATE ASSY., BALL CONTROL	0	75090-VA4-030	SFY
	6		BRAKE COMP.	0	75100-VA4-010	SFY
	7		RETAINER COMP., BALL	0	75110-VA4-000	SFY
	8		DISK, BRAKE	0	75120-VA4-010	SFY
	9		DISK, DRIVE	0	75130-VA4-000	SFY
	10		SPRING, BRAKE HOLDER	0	75132-VA4-000	SFY
	11		BUSH, BRAKE HOLDER	0	75133-VA4-000	SFY
	12		PLATE COMP., BALL CONTROL	0	75140-VA4-020	SFY
	13		DISK COMP., DRIVEN	0	75150-VA3-J01	SFY
	14		SPRING, CLUTCH RETURN (53.0MM)	0	75182-VA3-J00	SFY
	15		SPRING, CLUTCH (36.6MM)	0	75183-VA3-J00	SFY
	16		BOLT, FLANGE, 6X14(CT200)	0	90014-952-000	SFY
	17		BOLT, SPECIAL, 6MM	0	90021-VA4-000	SFY
	18		WASHER, THRUST	0	90501-952-010	SFY
	19		BEARING, RADIAL BALL, 6204 ...	0	91102-VA4-013	SFY
	20		BEARING, RADIAL BALL, 60/22 ..	0	91103-VA4-003	SFY

NOTE A:PART NO.CHANGE D:NEWLY PROVIDED E:PART NO.DELETION K:REQUIRED NO.CORRECTION L:APPLICATION SERIAL NO.CORRECTION
T:APPLICATION CORRECTION Z:REMARKS CHANGE

BOOKNo. :13Z1V401

PARTS CATALOGUE NEWS

Block No.	Ref. No.	Part No.	Description	Reqd. QTY GXV 160 H2	Base Part No.	Parts catalogue code
	21		KEY, WOODRUFF, 16X15	0	94401-16150	SFY

NOTE A:PART NO. CHANGE D:NEWLY PROVIDED E:PART NO. DELETION K:REQUIRED NO. CORRECTION L:APPLICATION SERIAL NO. CORRECTION
T:APPLICATION CORRECTION Z:REMARKS CHANGE

September 06, 2004



PARTS CATALOGUE NEWS

Honda Motor Co., Ltd. Service Division

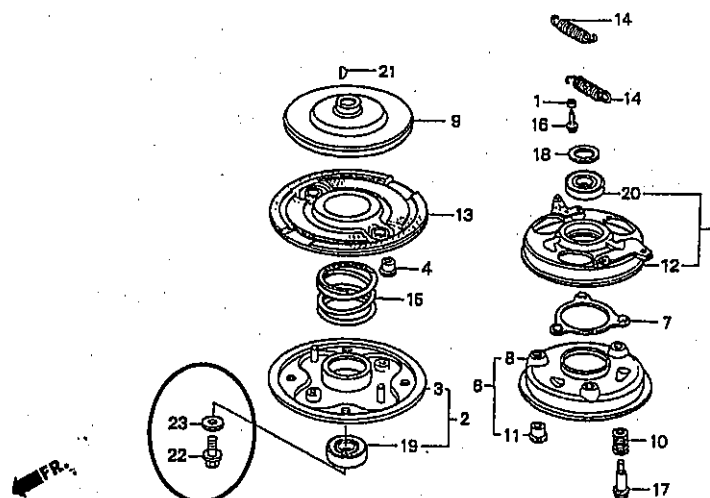
PARTS CATALOGUE - CORRECTED

Printed in Japan

CODE NO.	BOOKLET TYPE	13Z1V401
	MICRO-FICHE	13Z1V4EA/FA
PARTS CATALOGUE NEWS	GXV160H2	
NEWS NO.	012	

Block No.	Ref. No.	Note	Part No.	Description	Reqd. QTY	Serial No.	Parts catalogue code
					GXV 160 H2		

E-40 BLADE HOLDER



Z1V0-Z4000A

E-40	22	D	90105-960-003	BOLT, HEX., 10X25	1	-----	SFL1, SFY1
------	----	---	---------------	-------------------------	---	-------	------------

NOTE A: PART NO. CHANGE D: NEWLY PROVIDED E: PART NO. DELETION K: REQUIRED NO. CORRECTION L: APPLICATION SERIAL NO. CORRECTION
T: APPLICATION CORRECTION Z: REMARKS CHANGE

PARTS CATALOGUE NEWS

BOOK No. : 13Z1V401

Block No.	Ref. No.	Note	Part No.	Description	Reqd. QTY QTY 160 H2	Serial No.	Parts catalogue code
	23	D	90409-952-000	WASHER, 10MM	1	-----	SFL1, SFY1

NOTE A: PART NO. CHANGE D: NEWLY PROVIDED E: PART NO. DELETION K: REQUIRED NO. CORRECTION L: APPLICATION SERIAL NO. CORRECTION
T: APPLICATION CORRECTION Z: REMARKS CHANGE

October 03, 2004



PARTS CATALOGUE NEWS

Honda Motor Co., Ltd. Service Division

PARTS CATALOGUE - CORRECTED

Printed in Japan

CODE NO.	BOOKLET TYPE	13Z1V401
	MICRO-FICHE	13Z1V4EA/FA
PARTS CATALOGUE NEWS	GXV160H2	
NEWS NO.	013	

Block No.	Ref. No.	Note	Part No.	Description	Reqd. QTY GXV 160 H2	Serial No.	Parts catalogue code
E-3	22	E	17517-ZE7-000	*PARTS NO. DELETION			
E-22	17	T	36103-ZE1-000	HOLDER, STOP SWITCH CORD	1	-----	N1, N4, N5, N5M, N6, SFL, SFL1, SFY, SFY1, T1AH
E-22-1	16	T	36103-ZE1-000	HOLDER, STOP SWITCH CORD	1	-----	N1F, N15, N45, N55

NOTE A:PART NO.CHANGE D:NEWLY PROVIDED E:PART NO.DELETION K:REQUIRED NO.CORRECTION L:APPLICATION SERIAL NO.CORRECTION
T:APPLICATION CORRECTION Z:REMARKS CHANGE



PARTS CATALOGUE NEWS

Honda Motor Co., Ltd. Service Division

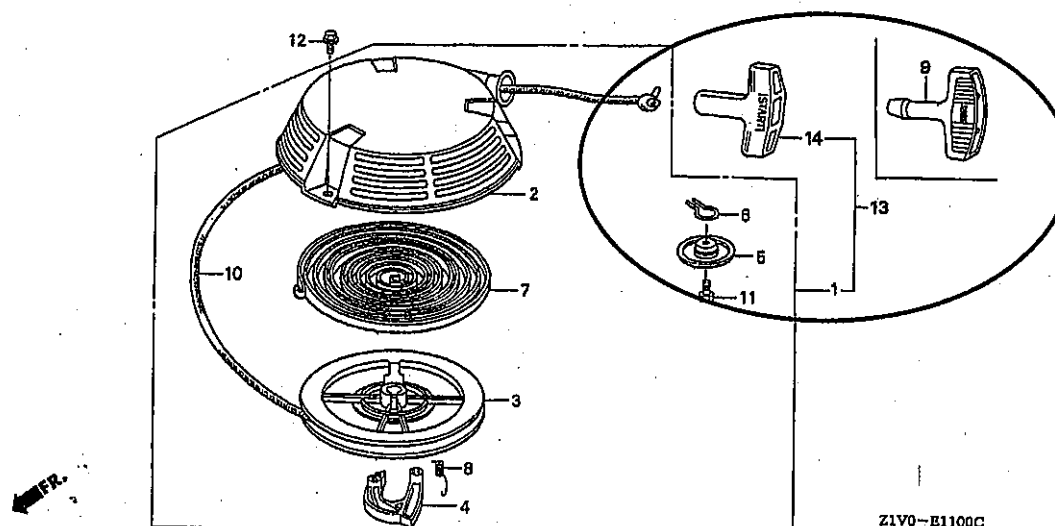
PARTS CATALOGUE - CORRECTED

Printed in Japan

CODE NO.	BOOKLET TYPE	13Z1V401
	MICRO-FICHE	13Z1V4EA/FA
PARTS CATALOGUE NEWS	GXV160H2	
NEWS NO.	014	

Blook No.	Ref. No.	Note	Part No.	Description	Reqd. QTY GXV 160 H2	Serial No.	Parts catalogue code
-----------	----------	------	----------	-------------	-------------------------------	------------	----------------------

E-11 RECOIL STARTER



Z1V0-B1100C

E-11 1 E 28400-ZE7-V11ZB *PARTS NO. DELETION

NOTE A: PART NO. CHANGE D: NEWLY PROVIDED E: PART NO. DELETION K: REQUIRED NO. CORRECTION L: APPLICATION SERIAL NO. CORRECTION
T: APPLICATION CORRECTION Z: REMARKS CHANGE

Block No.	Ref. No.	Note	Part No.	Description	Reqd. QTY 0XV 160 H2	Serial No.	Parts catalogue code
		E	28400-ZE7-V11ZC	*PARTS NO. DELETION			
		E	28400-ZE7-003ZB	*PARTS NO. DELETION			
		E	28400-ZE7-003ZC	*PARTS NO. DELETION			
		T	28400-Z1V-J51ZA	STARTER ASSY., RECOIL (LONG ROPE/HEPE) *R280*.....POWER RED	1	-----	A1S, A1SA, N5M
		T	28400-Z1V-J51ZB	STARTER ASSY., RECOIL (LONG ROPE) *NH1*.....BLACK	1	-----	A1S, A1SA, N5M
	9	E	28461-ZE1-003	*PARTS NO. DELETION			
	13	D	28400-ZE7-V11ZB	STARTER ASSY., RECOIL (LONG ROPE) *NH1*.....BLACK	1	-----	N1F, N15, N45, N55
		D	28400-ZE7-V11ZC	*R280*.....POWER RED	1	-----	N1F, N15, N45, N55
		D	28400-ZE7-003ZB	STARTER ASSY., RECOIL *NH1*.....BLACK	1	-----	A14, SFL1, T1AH
		D	28400-ZE7-003ZC	*R280*.....POWER RED	1	-----	A14, C12, C14, N1, N4, N5, N6, N6S, SFC, SFL, SFL1, SFY, SFY1
	14	D	28461-ZE1-003	KNOB, RECOIL STARTER	1	-----	A14, C12, C14, N1, N1F, N15, N4, N45, N5, N55, N6, N6S, SFC, SFL, SFL1, SFY, SFY1, T1AH
E-19-1	5	E	36121-ZE6-000	*PARTS NO. DELETION			
		D	35129-Z1V-811	SPRING, SWITCH CONTROL	1	-----	A1S, A1SA, A14, C12, C14, SFC

NOTE A:PART NO.CHANGE D:NEWLY PROVIDED E:PART NO.DELETION K:REQUIRED NO.CORRECTION L:APPLICATION SERIAL NO.CORRECTION
T:APPLICATION CORRECTION Z:REMARKS CHANGE



PARTS CATALOGUE NEWS

Honda Motor Co., Ltd. Service Division

PARTS CATALOGUE - CORRECTED

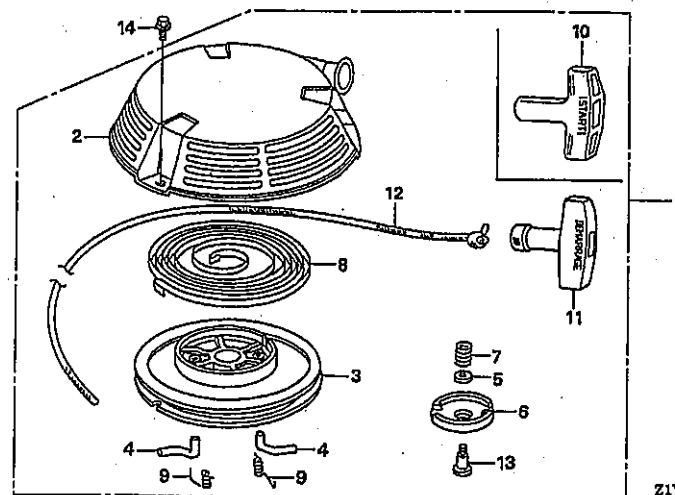
Printed in Japan

CODE NO.	BOOKLET TYPE	13Z1V401
	MICRO-FICHE	13Z1V4EA/FA
PARTS CATALOGUE NEWS	GXV160H2	
NEWS NO.	015	

Block No.	Ref. No.	Note	Part No.	Description	Reqd. QTY	Serial No.	Parts catalogue code
					GXV 160 H2		

E-11-1 RECOIL STARTER (2)

Ref. No.	LON	(Relative ref. Number) Service item	F.R.T.
1	1121B9	STARTER, RECOIL	0.1
4	1121B0	RATCHET, STARTER AND/OR SPRING, RATCHET	0.2
8	1121B7	SPRING, RECOIL STARTER RETURN	0.3
12	1121B3	ROPE, RECOIL STARTER	0.3

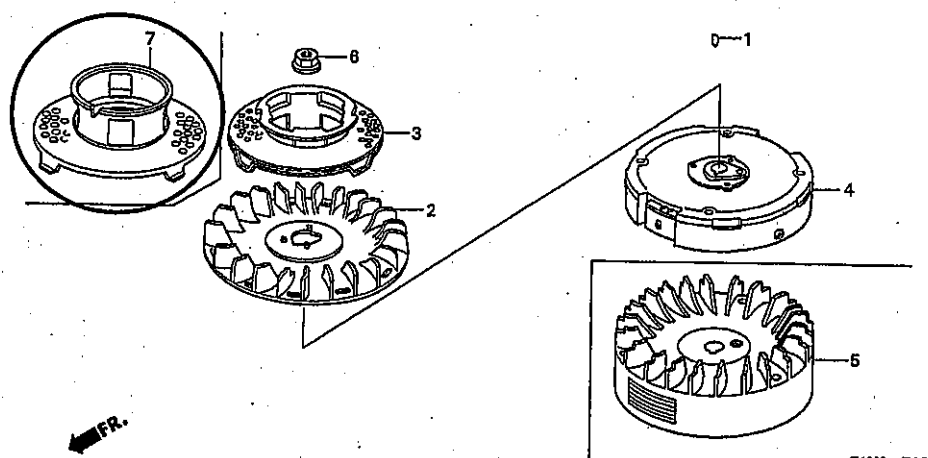


Z1V0-E1101

NOTE A:PART NO.CHANGE D:NEWLY PROVIDED E:PART NO.DELETION K:REQUIRED NO.CORRECTION L:APPLICATION SERIAL NO.CORRECTION
T:APPLICATION CORRECTION Z:REMARKS CHANGE

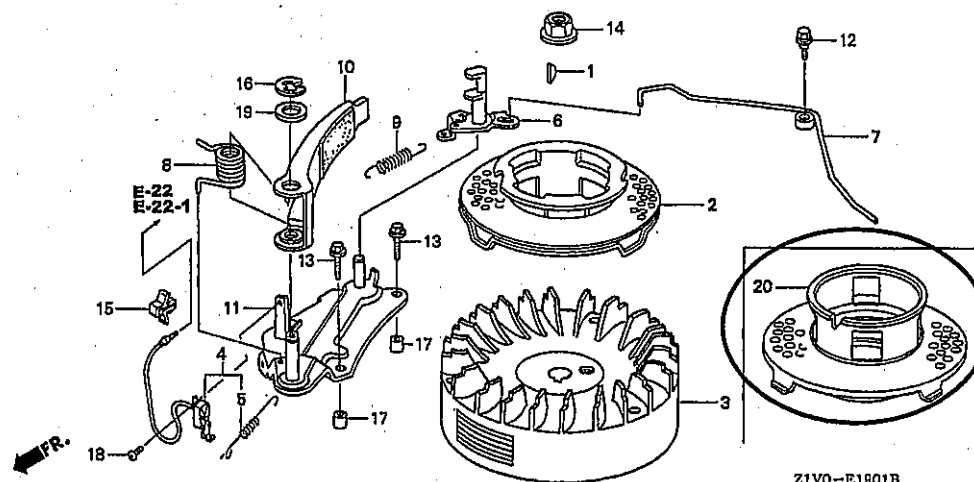
Block No.	Ref. No.	Note	Part No.	Description	Reqd. QTY		Serial No.	Parts catalogue code
					GVV	HZ		
E-11-1	1	D	28400-Z1V-003ZA	STARTER ASSY., RECOIL *NH1*.....BLACK	1		-----	SFL1, T1AH
		D	28400-Z1V-003ZB	*R280*.....POWER RED	1		-----	C12, C14, N1, N4, N5, N6, N6S, SFC, SFL, SFL1, SFY, SFY1
		D	28400-Z1V-801ZA	STARTER ASSY., RECOIL (LONG ROPE) *NH1*.....BLACK	1		-----	A1S, A1SA, A14, N1F, N15, N45, N5M, N55
		D	28400-Z1V-801ZB	*R280*.....POWER RED	1		-----	A1S, A1SA, A14, N1F, N15, N45, N5M, N55
	2	D	28410-Z1V-003ZA	CASE COMP., RECOIL STARTER *R280*.....POWER RED	1		-----	A1S, A1SA, A14, C12, C14, N1, N1F, N15, N4, N45, N5, N5M, N55, N6, N6S, SFC, SFL, SFL1, SFY, SFY1
		D	28410-Z1V-003ZB	*NH1*.....BLACK	1		-----	A1S, A1SA, A14, N1F, N15, N45, N5M, N55, SFL1, T1AH
	3	D	28420-Z1V-003	REEL, RECOIL STARTER (BLACK)	1			
	4	D	28422-ZH8-801	RATCHET, STARTER	2			
	5	D	28431-ZH8-801	PLATE, FRICTION	1			
	6	D	28433-ZH8-801	GUIDE, RATCHET	1			
	7	D	28441-ZH8-801	SPRING, FRICTION	1			
	8	D	28442-ZH8-003	SPRING, RECOIL STARTER	1			
	9	D	28443-ZH8-801	SPRING, RETURN	2			
	10	D	28461-ZE1-003	KNOB, RECOIL STARTER (FOR LONG ROPE)	1		-----	A1S, A1SA, A14, N1F, N15, N45, N5M, N55
	11	D	28461-ZH8-003	GRIP, STARTER	1		-----	C12, C14, N1, N4, N5, N6, N6S, SFC, SFL, SFL1, SFY, SFY1, T1AH
	12	D	28462-ZH8-003	ROPE, RECOIL STARTER	1		-----	C12, C14, N1, N4, N5, N6, N6S, SFC, SFL, SFL1, SFY, SFY1, T1AH
		D	28462-Z1V-801	ROPE, RECOIL STARTER (LONG) ..	1		-----	A1S, A1SA, A14, N1F, N15, N45, N5M, N55
	13	D	90003-ZH8-801	SCREW, SETTING	1			
	14	D	95701-06008-00	BOLT, FLANGE, 6X8	3			

NOTE A:PART NO.CHANGE D:NEWLY PROVIDED E:PART NO.DELETION K:REQUIRED NO.CORRECTION L:APPLICATION SERIAL NO.CORRECTION
T:APPLICATION CORRECTION Z:REMARKS CHANGE

Block No.	Ref. No.	Note	Part No.	Description	Reqd. QTY	Serial No.	Parts catalogue code
					GVV 160 H2		
E-19			FLYWHEEL (1)				
							
E-19	7	D	28450-Z1V-000	PULLEY COMP., STARTER	1	-----	N1, N1F, N15, N4, N45, N5, N5M, N55, N6, N6S, SFL, SFL1, SFY, SFY1, T1AH.

NOTE A: PART NO. CHANGE D: NEWLY PROVIDED E: PART NO. DELETION K: REQUIRED NO. CORRECTION L: APPLICATION SERIAL NO. CORRECTION
T: APPLICATION CORRECTION Z: REMARKS CHANGE

Block No.	Ref. No.	Note	Part No.	Description	Reqd. QTY GXV 160 H2	Serial No.	Parts catalogue code
E-19-1			FLYWHEEL (2)				



E-19-1	20	D	28450-Z1V-000	PULLEY COMP., STARTER	1	-----	A1S, A1SA, A14, C12, C14, SFC
--------	----	---	---------------	-----------------------------	---	-------	-------------------------------

NOTE A:PART NO.CHANGE D:NEWLY PROVIDED E:PART NO.DELETION K:REQUIRED NO.CORRECTION L:APPLICATION SERIAL NO.CORRECTION
T:APPLICATION CORRECTION Z:REMARKS CHANGE

December 19, 2004



PARTS CATALOGUE NEWS

Honda Motor Co., Ltd. Service Division

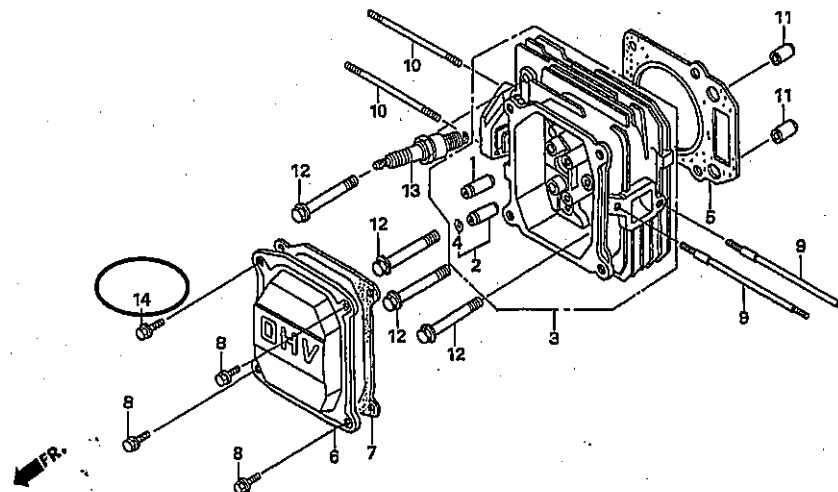
PARTS CATALOGUE - CORRECTED

Printed in Japan

CODE NO.	BOOKLET TYPE	13Z1V401
	MICRO-FICHE	13Z1V4EA/FA
PARTS CATALOGUE TITLE	GXV160H2	
NEWS NO.	016	

Block No.	Ref. No.	Note	Part No.	Description	Reqd. QTY GXV 160 H2	Serial No.	Parts catalogue code
-----------	----------	------	----------	-------------	-------------------------------	------------	----------------------

E-2 CYLINDER HEAD



E-2	8	K	90013-883-000	BOLT, FLANGE, 6X12 (CT200)	3
-----	---	---	---------------	---------------------------------	---

NOTE A: PART NO. CHANGE D: NEWLY PROVIDED E: PART NO. DELETION K: REQUIRED NO. CORRECTION L: APPLICATION SERIAL NO. CORRECTION
T: APPLICATION CORRECTION Z: REMARKS CHANGE

BOOKNo. :13Z1V401

PARTS CATALOGUE NEWS

Block No.	Ref. No.	Note	Part No.	Description	Reqd. QTY CXV 160 H2	Serial No.	Parts catalogue code
	14	T	90014-952-000	BOLT, FLANGE, 6X14(CT200)	1		
E-3	4	T	12000-Z1V-000	BARREL ASSY., CYLINDER	1	-----	A1S, A1SA, A14, C12, C14, SFC
		T	12000-Z2J-000	1	-----	N1, N1F, N15, N4, N45, N5, N5M, N55, N6, N6S, SFL, SFL1, SFY, SFY1, T1AH
		D	12000-ZE7-405	(1)	-----	N1, N1F, N15, N4, N45, N5, N5M, N55, N6, N6S, SFL, SFL1, SFY, SFY1, T1AH
		D	12000-ZE7-406	(1)	-----	A1S, A1SA, A14, C12, C14, SFC

NOTE A:PART NO.CHANGE D:NEWLY PROVIDED E:PART NO.DELETION K:REQUIRED NO.CORRECTION L:APPLICATION SERIAL NO.CORRECTION
T:APPLICATION CORRECTION Z:REMARKS CHANGE