

This catalog covers:
FC180V—□B01

GRID NO.

A-01

This grid covers:

PARTS CATALOG

4—STROKE ENGINE

FC180V

PRODUCT CODE	NOTE
FC180V-AB01	MOWER(SW621B)

P/N 99908-2023-01



KAWASAKI HEAVY INDUSTRIES, LTD

This catalog covers:

GRID NO.

A-2

This grid covers:

Parts Catalog Introduction

PARTS CATALOG INTRODUCTION

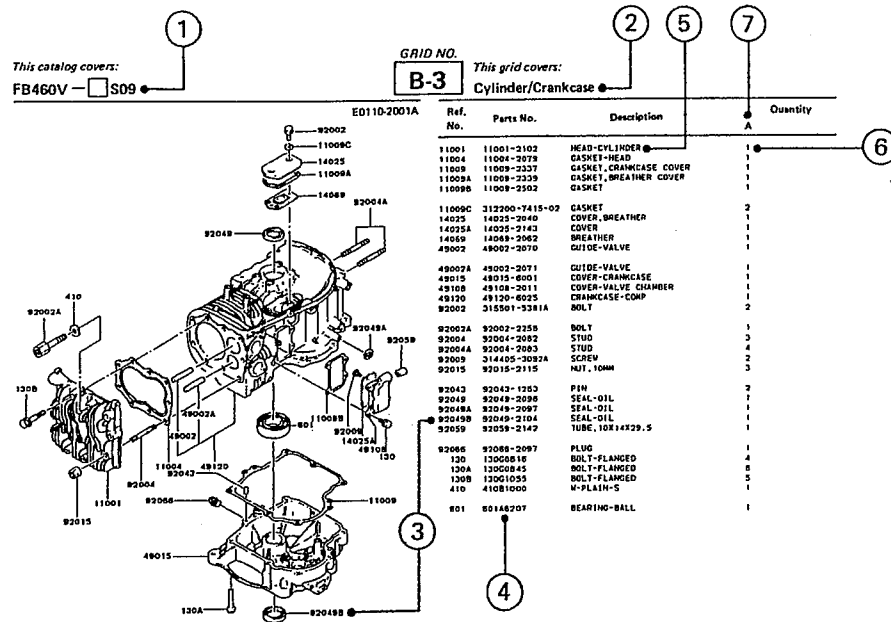
This parts catalog lists parts and sub-assemblies provided as service parts. When it becomes necessary to replace parts, always use KAWASAKI GENUINE PARTS which have passed strict inspection which guarantees quality and performance.

1. HOW TO ORDER PARTS

1) When ordering the parts, be sure to use the parts catalog corresponding to the product code. Check the product revision codes on the product and the catalog.
Product Code (example) : FA130D-AA00

2) Specify the part code (all digits) exactly as listed in this catalog on your parts order.
3) The parts not shown in the illustrations of this catalog are not sold separately; only the complete units or next higher assemblies illustrated are supplied as the service parts.

2. EXPLANATION OF PARTS CATALOG FORMAT



MAR. 14, 1988

1) Product Code

This code describes the product code covered by this catalog. The product revision code, which is a part of the product code, is omitted.

2) Part Group Title

This title is the representative name for the group of parts illustrated on the page.

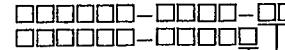
3) Reference Number

The reference numbers are shown on the illustration and the list as the link between them.

4) Part Number

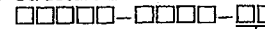
This is the key of your parts ordering. Three kinds of part number are used in this catalog.

a. Structure 1



Part Revision Code

b. Structure 2



Color Code for Painted Part

c. Standard Hardware Number

(for bolts, nuts, washer, or the like)



Size Code

Material and Surface Treatment Code

Item Code

5) Description and Additional Information

The part name, the location, the size, and the serial number as additional information, etc. are described here. Use them to find out and check the part required.

When a part number is changed without change of the product revision code and the changed parts are not interchangeable, the serial number of the product is noted as follows;

(FA130-100001) : Affected units are from beginning of the product of the product code up to and including this serial number.

(FA130-100002 -) : Affected units are from this serial number and above.

(FA130-100002 - FA130-110001) : Affected units are in this serial number range.

6) Quantity

The figure shows quantity of the part required at the indicated position on the illustration and for the specified product revision code.

The asterisk (*) on this column means the part can be used as the substitute on the product and is supplied until the stock is exhausted.

Note: Some small parts will be supplied by units.

Example: If six (6) bolts are ordered and the minimum quantity per unit is five (5), two (2) units of the bolt will be delivered.

7) Product Revision Code

This code indicates an important change which affects the service parts interchangeability.

3. ABBREVIATIONS

#	Number	FR	Front	RH	Right Hand
&	And	G	Gram	RPM	Revolutions Per Minute
(+)	Plus	HEX	Hexagonal	RR	Rear
(-)	Minus	ID=	Inside Diameter	STD	Standard
2ND	Second	IN	Inch	T	Teeth
3RD	Third	L=	Length	T=	Thickness
4TH	Fourth	LH	Left Hand	U/S	Under Size
A	As Required	LWR	Lower	UPP	Upper
AR	As Required	MM	Millimeter	V	Volt
ASSY	Assembly	O/S	Over Size	W	Watt
CNT	Center	OD=	Outside Diameter		
COMP	Complete	REF	Reference		

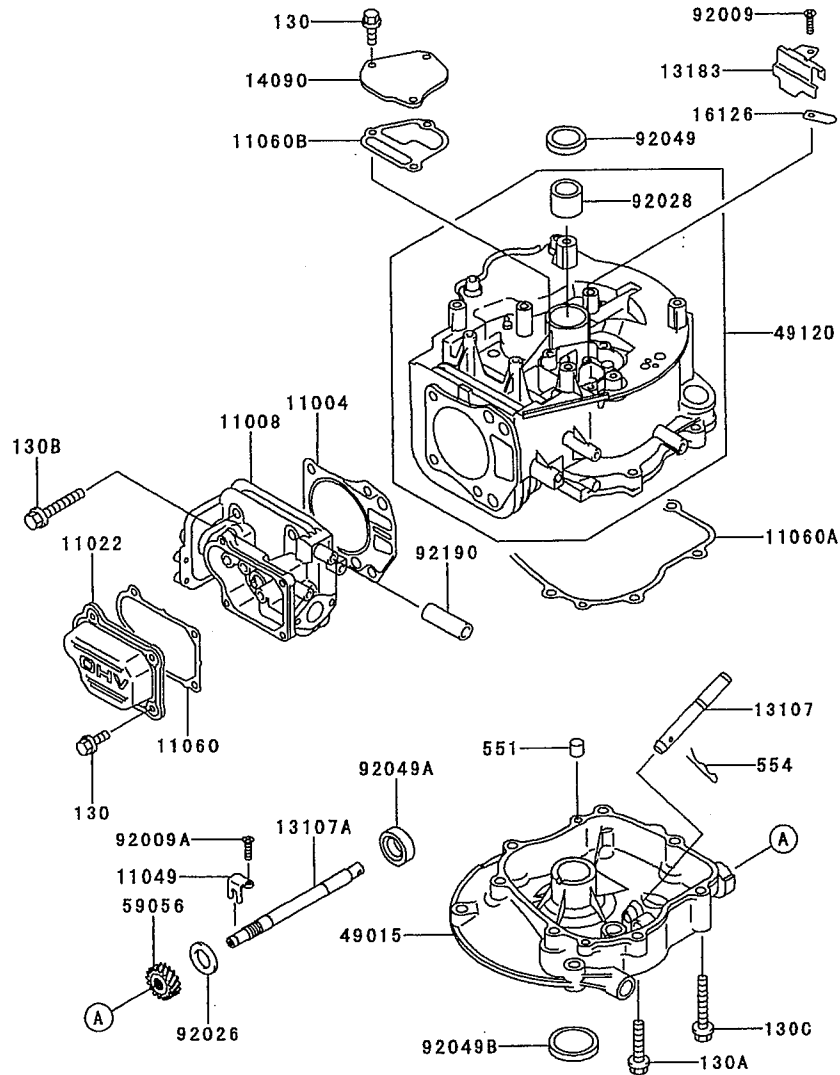
This catalog covers:

FC180V- □ B01

This fig. covers:

01 CYLINDER/CRANKCASE

E0110-A174C



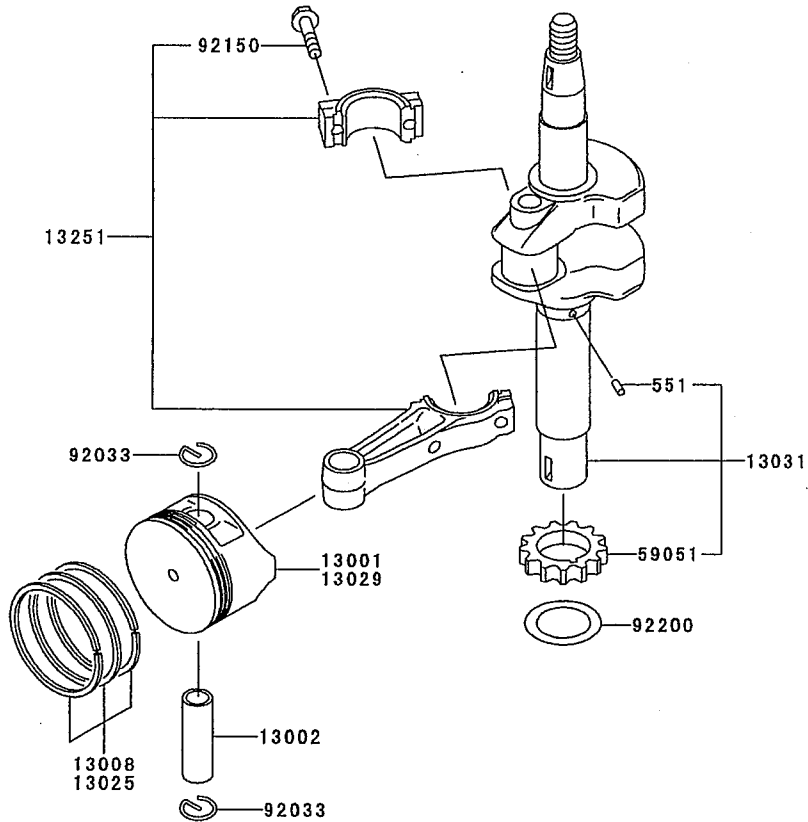
Ref. No.	Part No.	Description	Quantity
			A
11004	11004-2117	GASKET-HEAD	1
11008	11008-2118	HEAD-COMP-CYLINDER	1
11022	11022-2067	CASE-ROCKER	1
11049	11049-2019	BRACKET	1
11060	11060-2139	GASKET,ROCKER CASE	1
11060A	11060-2142	GASKET,CRANKCASE COVER	1
11060B	11060-2143	GASKET	1
13107	13107-2255	SHAFT	1
13107A	13107-2272	SHAFT	1
13183	13183-2504	PLATE	1
14090	14090-2094	COVER	1
16126	16126-2146	VALVE	1
49015	49015-2338	COVER-CRANKCASE	1
49120	49120-6103	CRANKCASE-COMP	1
59056	59056-2790	GEAR-HELICAL	1
92009	92009-2166	SCREW,5X8	1
92009A	92009-2308	SCREW	1
92026	92022-269	SPACER	1
92028	92028-2017	BUSHING	1
92049	92049-2199	SEAL-OIL	1
92049A	92049-2204	SEAL-OIL	1
92049B	92049-2210	SEAL-OIL	1
92190	92190-2112	TUBE,12X16X46	1
130	130B0612	BOLT-FLANGED	7
130A	130G0835	BOLT-FLANGED.	4
130B	130G0845	BOLT-FLANGED	4
130C	130G0850	BOLT-FLANGED	3
551	551A0612	PIN-DOWEL	2
554	554A0600	PIN-SNAP	1

This catalog covers:
FC180V- □ B01

This fig. covers:
02 PISTON/CRANKSHAFT

E0120-A012B

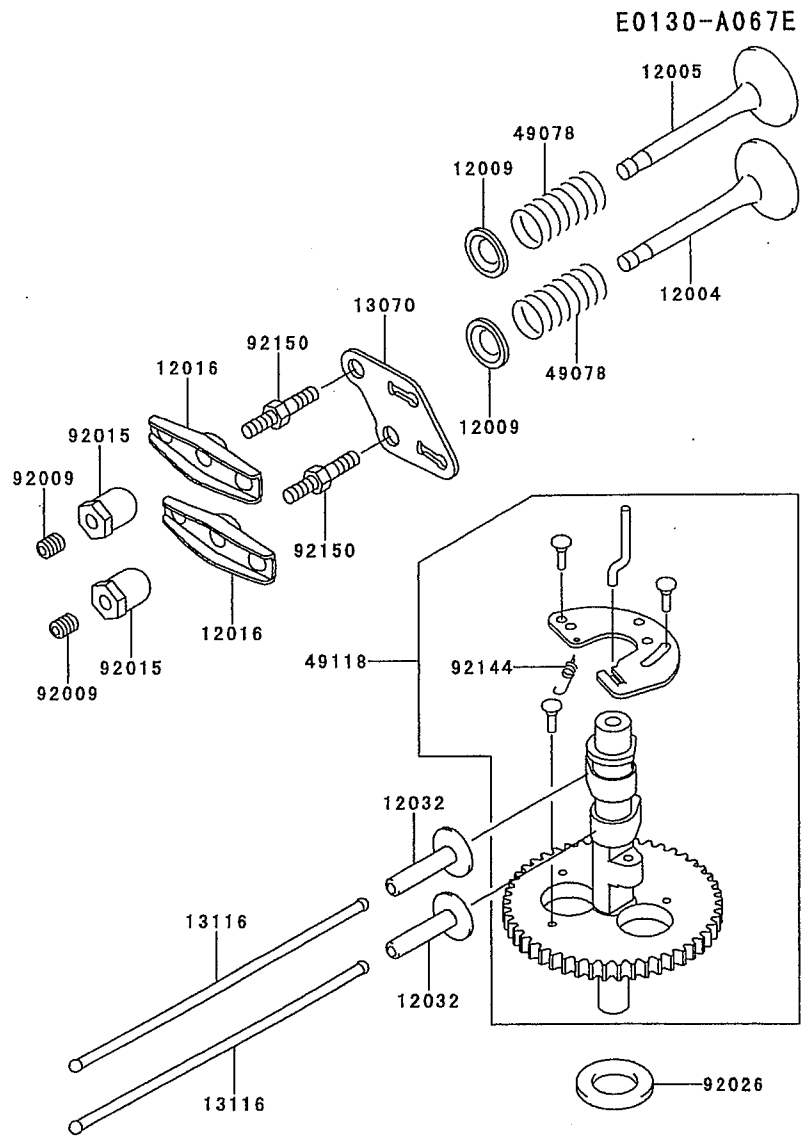
Ref. No.	Part No.	Description	Quantity
13001	13001-2134	PISTON-ENGINE	1
13002	13002-1004	PIN-PISTON	1
13008	13008-6029	RING-SET-PISTON	1
13025	13025-2099	RING-SET-PISTON L,0.5.	AR
13029	13029-2121	PISTON-ENGINE L,0.50	AR
13031	13031-2062	CRANKSHAFT-COMP	1
13251	13251-6052	ROD-ASSY-CONNECTING	1
59051	59051-2330	GEAR-SPUR	1
92033	92033-2053	RING-SNAP	2
92150	92150-2122	BOLT,CONNECTING ROD	2
92200	92200-2069	WASHER	1
551	551A0306	PIN-DOWEL	1



This catalog covers:
FC180V- □ B01

03

This fig. covers:
VALVE/CAMSHAFT

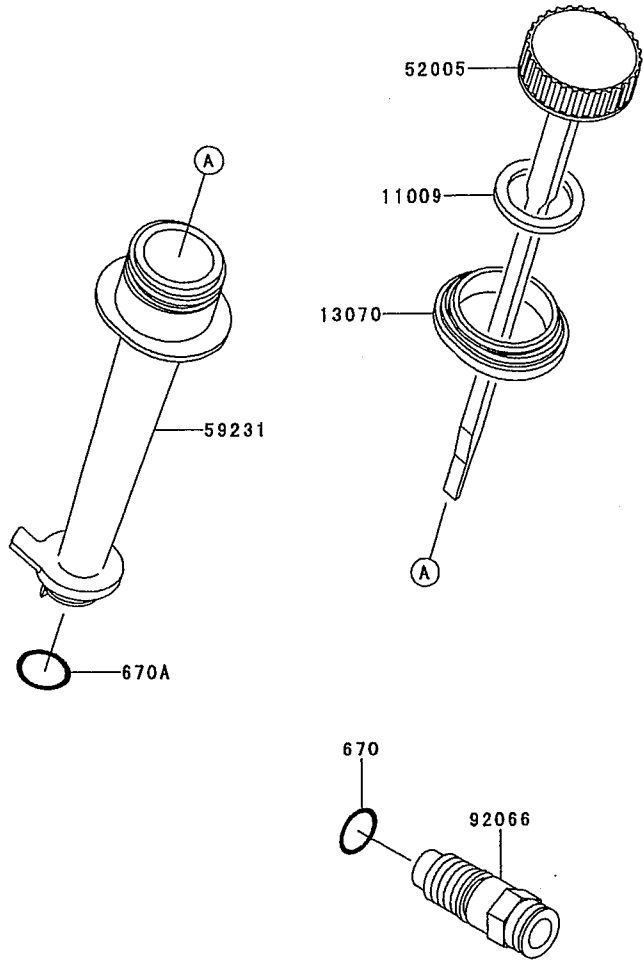


Ref. No.	Part No.	Description	Quantity
12004	12004-2101	VALVE-INTAKE	1
12005	12005-2089	VALVE-EXHAUST	1
12009	12009-2062	RETAINER-VALVE SPRING	2
12016	12016-2057	ARM-ROCKER	2
12032	12032-2065	TAPPET	2
13070	13070-2091	GUIDE	1
13116	13116-2065	ROD-PUSH	2
49078	49078-2064	SPRING-ENGINE VALVE	2
49118	49118-2126	CAMSHAFT-COMP	1
92009	92009-2341	SCREW	2
92015	92015-2253	NUT	2
92026	92022-269	SPACER	1
92144	92144-2315	SPRING	1
92150	92150-2248	BOLT	2

This catalog covers:
FC180V- □ B01

This fig. covers:
04 LUBRICATION-EQUIPMENT

E0140-A009A



Ref. No.	Part No.	Description	Quantity
11009	11009-2346	GASKET,OIL GAUGE	1
13070	13070-2092	GUIDE	1
52005	52005-2124	GAUGE	1
59231	59231-2077	FILLER	1
92066	92066-2180	PLUG	1
670	670D2015	O RING	1
670A	670D2016	O RING	1

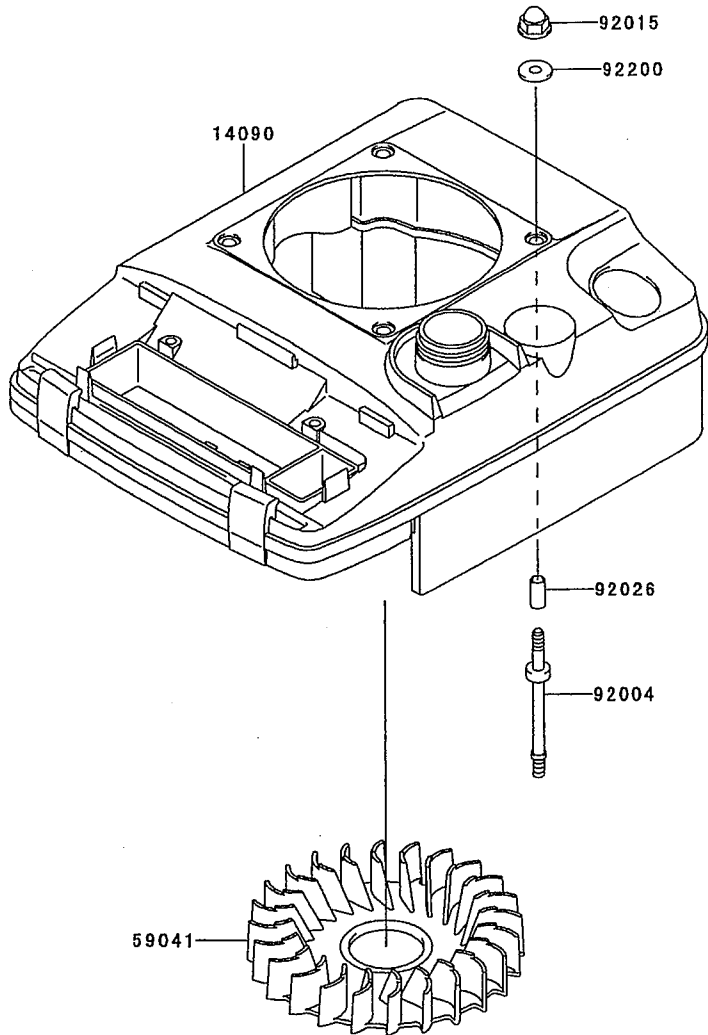
This catalog covers:

FC180V- □ B01

This fig. covers:

05 COOLING-EQUIPMENT

E0150-A122A



Ref. No.	Part No.	Description	Quantity
14090	14090-2097	COVER	1
59041	59041-2083	FAN	1
92004	92004-2135	STUD	4
92015	92015-1170	NUT	4
92026	92026-2273	SPACER,6.2X7.8X17	4
92200	92200-2037	WASHER,6.5X18X2.0	4

This catalog covers:

FC180V- □ B01

06

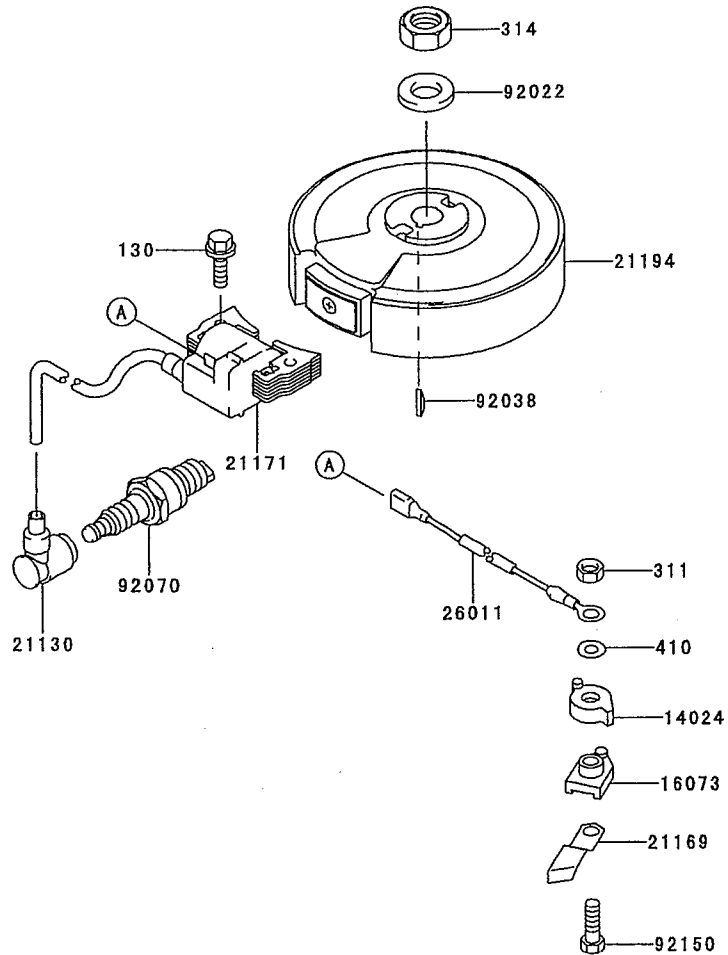
This fig. covers:

ELECTRIC-EQUIPMENT

E0160-A670A

Quantity

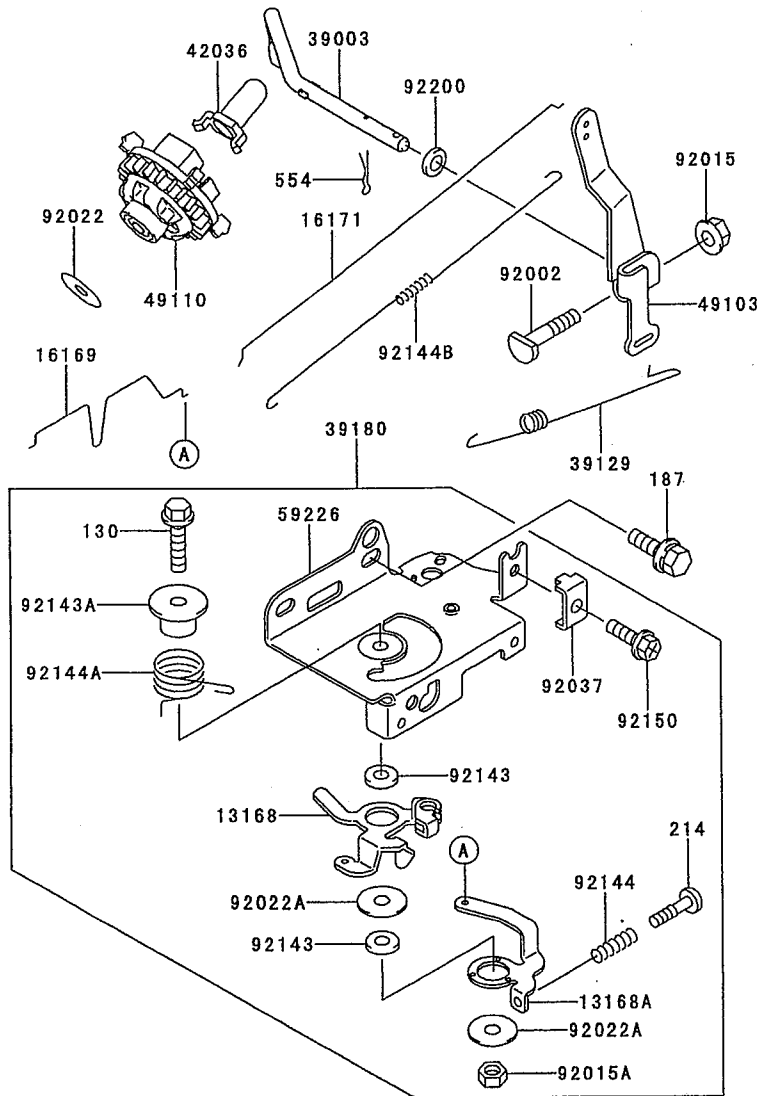
Ref. No.	Part No.	Description	A	Quantity
14024	14024-2183	COVER		1
16073	16073-2165	INSULATOR		1
21130	21130-2060	CAP-SPARK PLUG		1
21169	21169-2066	TERMINAL		1
21171	21171-2200	COIL-ASSY-IGNITION		1
21194	21194-2292	FLYWHEEL-COMP		1
26011	26011-2355	WIRE-LEAD,L=300MM		1
92022	92022-2102	WASHER		1
92038	92038-2077	KEY		1
92070	92070-2077	PLUG-SPARK,BPR5ES(NGK),SOLID		1
92150	92150-2300	BOLT,4X20		1
130	130G0625	BOLT-FLANGED		2
311	311B0400	NUT-HEX		1
314	314G1400	NUT-HEX-FINE		1
410	410B0400	W-PLAIN-S		1



This catalog covers:
FC180V- □ B01

This fig. covers:
07 CONTROL-EQUIPMENT

E0170-A012F



Ref. No.	Part No.	Description	Quantity
13168	13168-2352	LEVER	1
13168A	13168-2388	LEVER	1
16169	16169-2111	LINK-CHOKE	1
16171	16171-2068	LINK	1
39003	39003-2077	ARM-PIVOT	1
39129	39129-2054	SPRING-GOVERNOR	1
39180	39180-2895	PANEL-ASSY-CONTROL	1
42036	42036-2051	SLEEVE	1
49103	49103-2127	ARM-GOVERNOR	1
49110	49110-2080	GOVERNOR-ASSY	1
59226	59226-2291	PANEL-CONTROL	1
92002	92002-2269	BOLT	1
92015	92015-1193	NUT	1
92015A	92015-2051	NUT	1
92022	92022-2019	WASHER	1
92022A	92022-2372	WASHER,6X19X1.2	2
92037	92037-2209	CLAMP	1
92143	92143-2135	COLLAR,6X13X2.3	2
92143A	92143-2148	COLLAR	1
92144	92144-2266	SPRING	1
92144A	92144-2316	SPRING	1
92144B	92144-2329	SPRING	1
92150	92150-2182	BOLT,5X18	1
92200	92200-2029	WASHER,6.5X11.5X2.0	1
130	130B0630	BOLT-FLANGED	1
187	187B0614	BOLT-UPSET-WSP	2
214	214B0420	SCREW-PAN+-	1
554	554A0600	PIN-SNAP	1

This catalog covers:

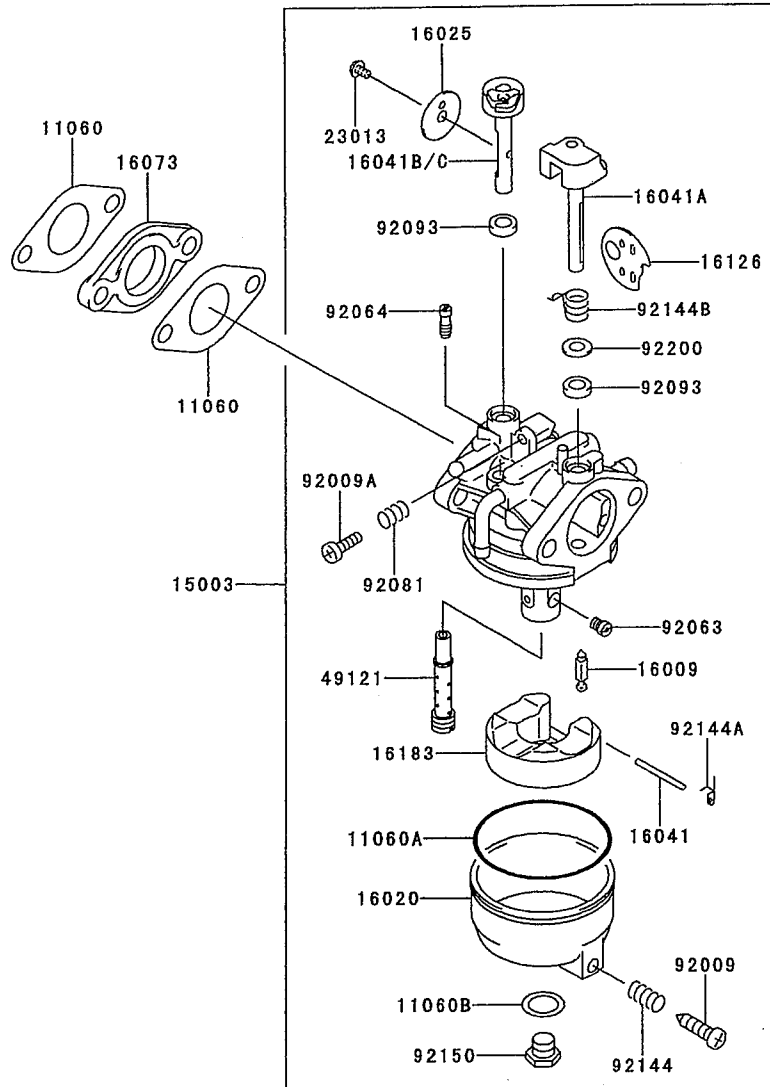
FC180V- □ B01

08

This fig. covers:

CARBURETOR

E0180-A293C

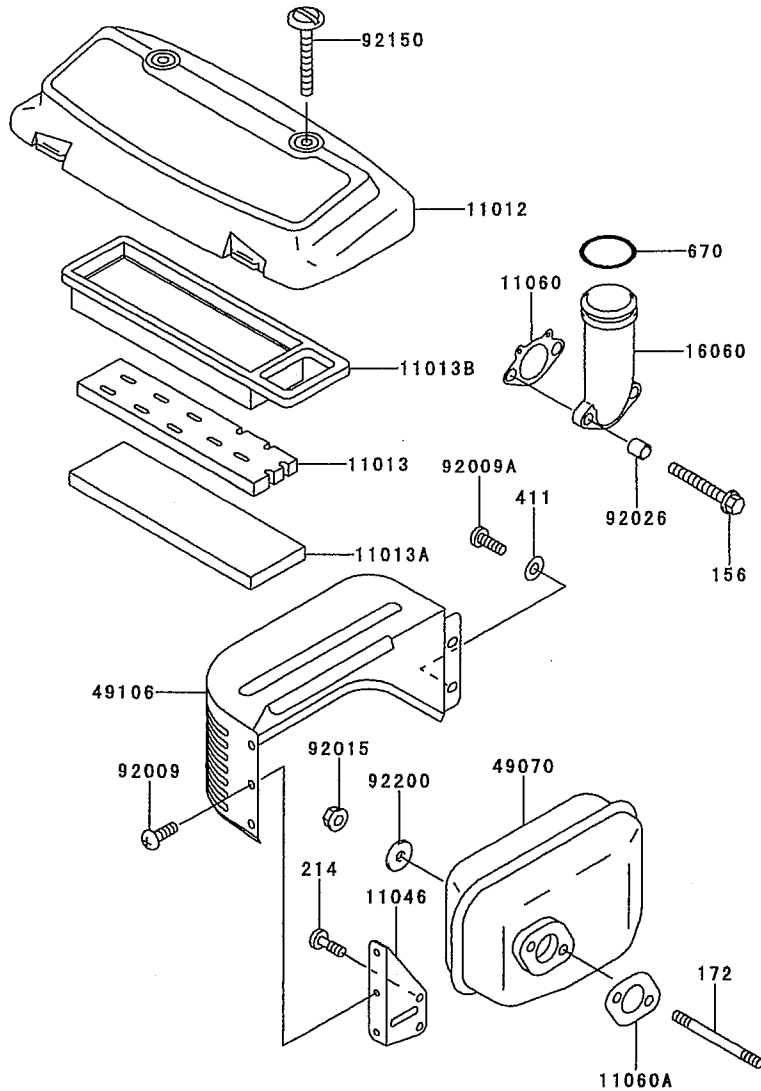


Ref. No.	Part No.	Description	Quantity
11060	11060-2144	GASKET,CARBURETOR	2
11060A	11060-2190	GASKET	1
11060B	11060-2191	GASKET	1
15003	15003-2618	CARBURETOR-ASSY	1
16009	16009-2136	NEEDLE-JET	1
16020	16020-2129	CHAMBER-FLOAT	1
16025	16025-2166	VALVE-THROTTLE	1
16041	16041-2224	SHAFT-CARBURETOR,FLOAT	1
16041A	16041-2231	SHAFT-CARBURETOR,CHOKE	1
16041B	16041-2244	SHAFT-CARBURETOR	*
16041C	16041-2258	SHAFT-CARBURETOR	1
16073	16073-2164	INSULATOR	1
16126	16126-2191	VALVE,CHOKE	1
16183	16183-2002	FLOAT-ASSY	1
23013	23013-2058	SCREW-ASSY	1
49121	49121-2190	NOZZLE-MAIN	1
92009	92009-2348	SCREW	1
92009A	92009-2349	SCREW	1
92063	92063-2338	JET-MAIN,#84	1
92064	92064-2122	JET-PILOT	1
92081	92081-2234	SPRING	1
92093	92093-2100	SEAL	2
92144	92144-2333	SPRING	1
92144A	92144-2335	SPRING	1
92144B	92144-2364	SPRING	1
92150	92150-2263	BOLT	1
92200	92200-2061	WASHER,9.8X5.5X1.0	1

This catalog covers:
FC180V- □ B01

This fig. covers:
09 AIR-FILTER/MUFFLER

E0190-A237B



Ref. No.	Part No.	Description	Quantity
11012	11012-2327	CAPAIR FILTER	1
11013	11013-2152	ELEMENT-AIR FILTER	1
11013A	11013-2180	ELEMENT-AIR FILTER	1
11013B	11013-2181	ELEMENT-AIR FILTER	1
11046	11046-2053	BRACKET	1
11060	11060-2141	GASKET	1
11060A	11060-2185	GASKET,MUFFLER	1
16060	16060-2171	PIPE-INTAKE	1
49070	49070-2461	MUFFLER-COMP	1
49106	49106-2430	COVER-MUFFLER	1
92009	92009-2166	SCREW,5X8	3
92009A	92009-2308	SCREW	2
92015	92015-1193	NUT	2
92026	92026-2272	SPACER,6.2X7.8X8	2
92150	92150-2152	BOLT	2
92200	92200-2032	WASHER,7X21X2.3	2
156	156R0680	BOLT-WP	2
172	172G0680	BOLT-STUD	2
214	214B0510	SCREW-PAN+-	2
411	411B0500	WASHER-PLAIN	2
670	670B3032	O RING	1

This catalog covers:

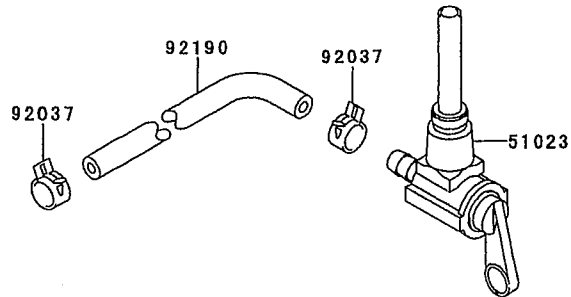
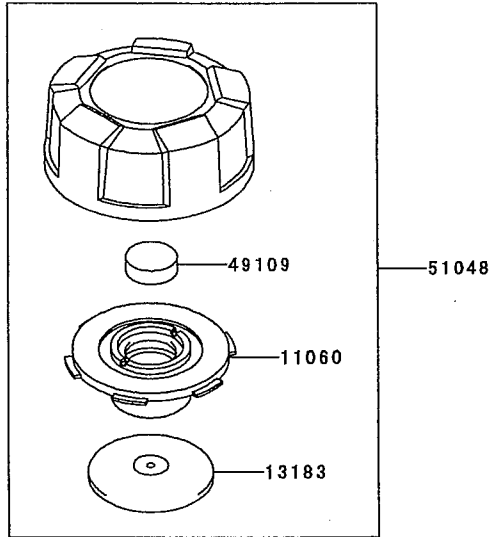
FC180V- □ B01

This fig. covers:

10 FUEL-TANK/FUEL-VALVE

E0200-A010A

Ref. No.	Part No.	Description	Quantity
11060	11060-2145	GASKET	1
13183	13183-2505	PLATE	1
49109	49109-2054	ELEMENT-BREATHER	1
51023	51023-2167	TAP-ASSY	1
51048	51048-2072	CAP-ASSY-TANK	1
92037	92037-2113	CLAMP	2
92190	92190-2113	TUBE,5X10X223	1

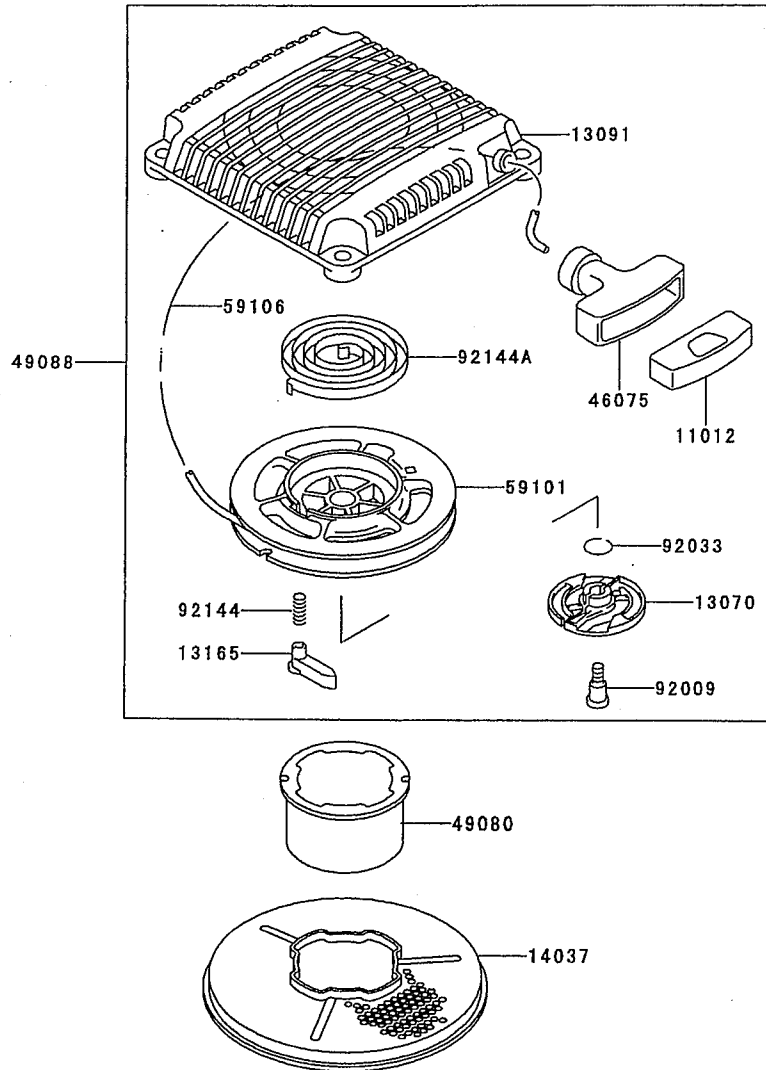


This catalog covers:
FC180V- □ B01

11

This fig. covers:
STARTER

E0210-A012A



Ref. No.	Part No.	Description	Quantity
11012	11012-2255	CAP,GRIP	1
13070	13070-2088	GUIDE,PAWL	1
13091	13091-2129	HOLDER,RECOIL STARTER	1
13165	13165-2082	PAWL,RECOIL STARTER	2
14037	14037-2127	SCREEN	1
46075	46075-2082	GRIP,RECOIL STARTER	1
49080	49080-2166	PULLEY-STARTING	1
49088	49088-2423	STARTER-RECOIL	1
59101	59101-2095	REEL,RECOIL STARTER	1
59106	59106-2126	ROPE,3.8X1650	1
92009	92009-2347	SCREW	1
92033	92033-2160	RING-SNAP	1
92144	92144-2177	SPRING,RETURN	2
92144A	92144-2272	SPRING	1

This catalog covers:

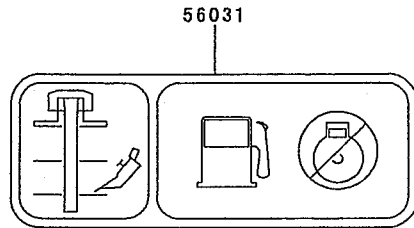
FC180V- □ B01

This fig. covers:

12 LABEL

F0290-A766A

Ref. No.	Part No.	Description	Quantity
56031	56031-2470	LABEL-MANUAL	1



This catalog covers:

FC180V- □ B01

13

This fig. covers:

TOOL

F0300-A015A

Ref. No.	Part No.	Description	Quantity
92110	92110-2093	TOOL-WRENCH,19X21	1

