

This catalog covers:

FC150V-C50

GRID NO.

A - 1

This grid covers:

P A R T S C A T A L O G

4 - S T R O K E A I R - C O O L E D E N G I N E

F C 1 5 0 V

P R O D U C T C O D E	N O T E
FC150V- CC50 HC50	MOWER(LM530)

K a w a s a k i

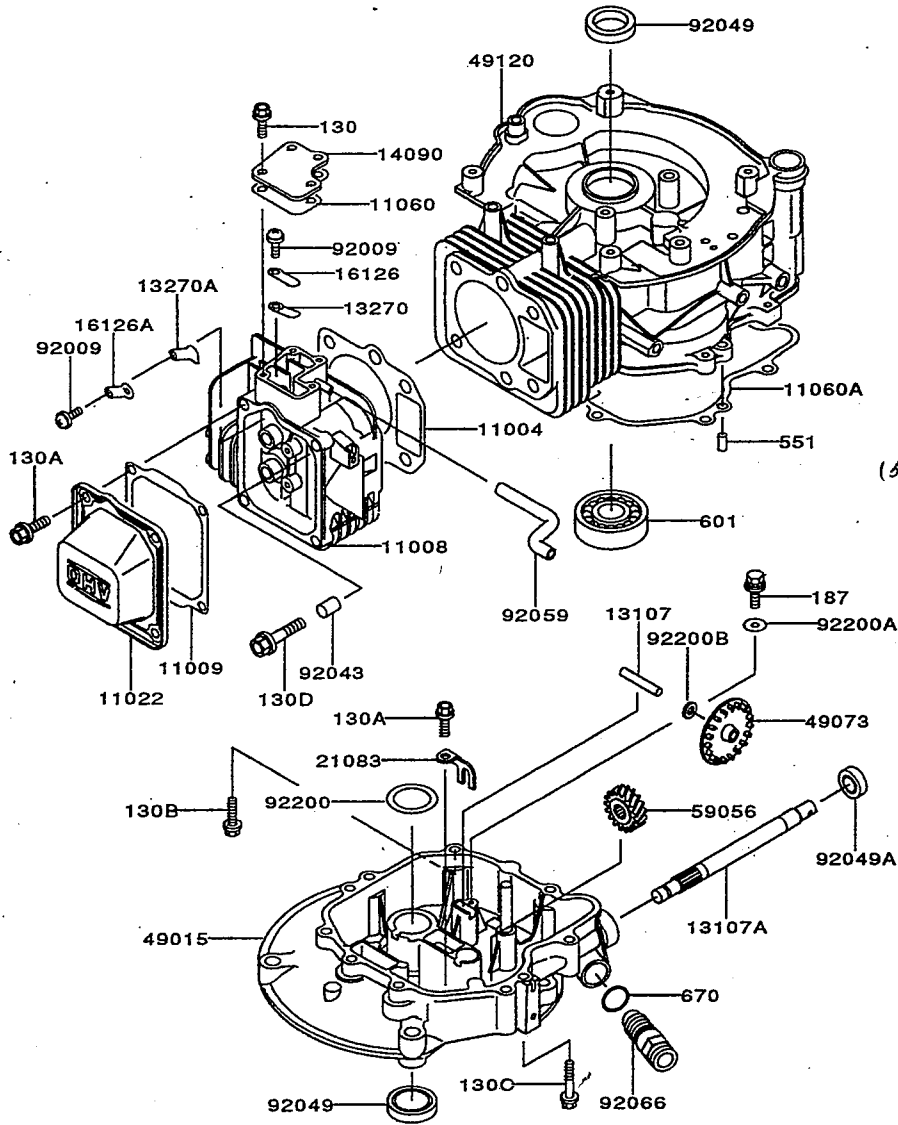
KAWASAKI HEAVY INDUSTRIES, LTD.

This catalog covers:
FC150V-□ C50

01

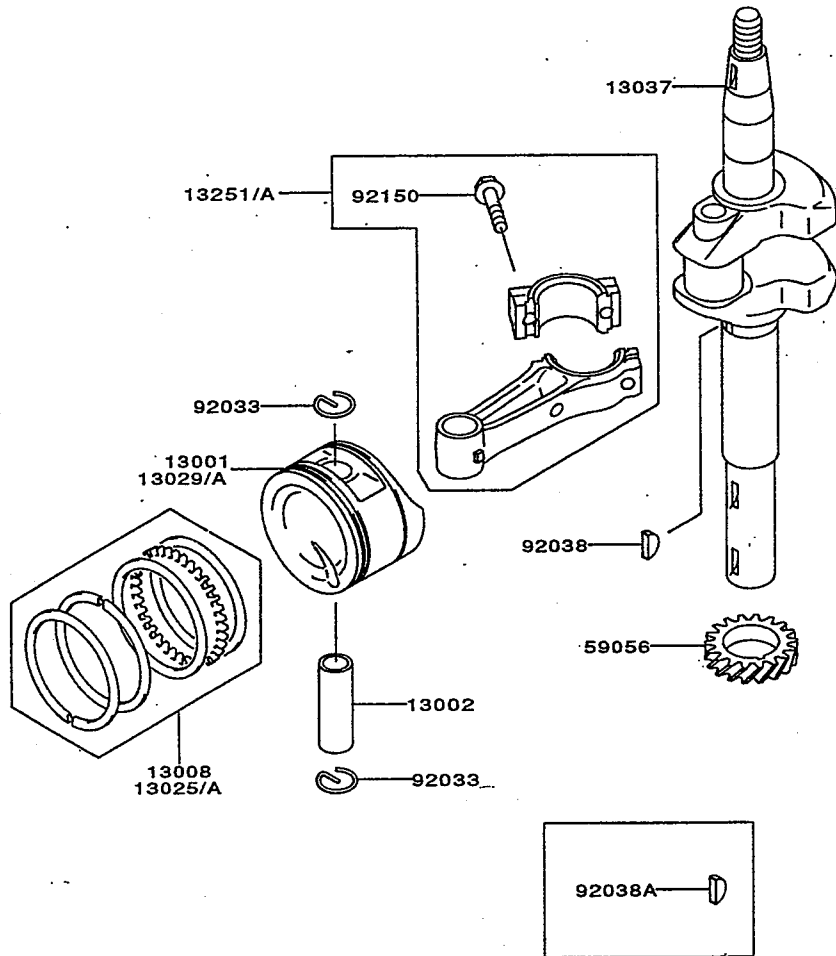
This fig. covers:
CYLINDER/CRANKCASE

E0110-A147A

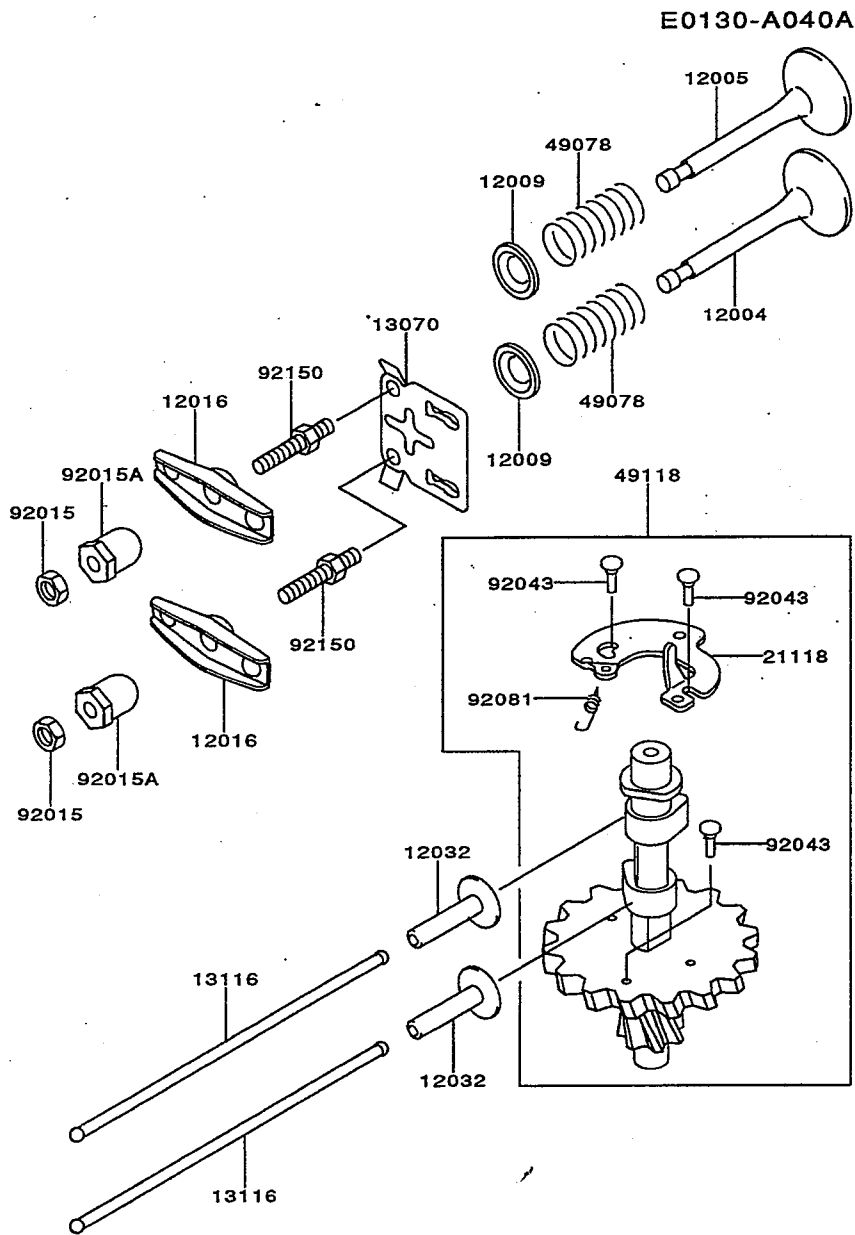


Ref. No.	Parts No.	Description	Quantity
11004	11004-2099	GASKET-HEAD	1
11008	11008-6023	HEAD-COMP-CYLINDER	1
11009	11009-2848	GASKET,ROCKER CASE	1
11022	11022-2057	CASE-ROCKER	1
11060	11060-2007	GASKET,COVER	1
11060A	11060-2011	GASKET,CRANKCASE COVER	1
13107	13107-2202	SHAFT	1
13107A	13107-2220	SHAFT	1
13270	13270-2049	PLATE	1
13270A	13270-2050	PLATE	1
14090	14090-2087	COVER	1
16126	16126-2201	VALVE	1
16126A	16126-2202	VALVE.	1
21083	21083-2062	ARM	1
49015	49015-6088	COVER-CRANKCASE	1
49073	49073-2055	SLINGER-OIL	1
49120	49120-2246	CRANKCASE-COMP	1
(59057)-59056	59056-2790	GEAR-HELICAL (59057-2079)	1
92009	92009-2166	SCREW,5X8	2
92043	92043-1264	PIN	2
92049	92049-2208	SEAL-OIL	2
92049A	92049-2229	SEAL-OIL	1
92059	92059-2256	TUBE	1
92066	92066-2180	PLUG	1
92200	92200-2026	WASHER,25X42X1.0	1
92200A	92200-2033	WASHER,5X16X0.8	1
92200B	92200-2034	WASHER,6X12X1.6	1
130	130B0510	BOLT-FLANGED	4
130A	130B0612	BOLT-FLANGED	5
130B	130G0625	BOLT-FLANGED	5
130C	130G0645	BOLT-FLANGED	2
130D	130G0845	BOLT-FLANGED	4
187	187B0510	BOLT-UPSET-WSP	1
551	551A0612	PIN-DOWEL	2
601	601B6205	BEARING-BALL	1
670	670D2015	O RING	1

E0120-A101A



Ref. No.	Parts No.	Description	Quantity
			G
13001	13001-2109	PISTON-ENGINE	1
13002	13002-2074	PIN-PISTON	1
13008	13008-6030	RING-SET-PISTON	1
13025	13025-6003	RING-SET-PISTON L,0.25	AR
13025A	13025-6004	RING-SET-PISTON L,0.50	AR
13029	13029-2094	PISTON-ENGINE L,0.25	AR
13029A	13029-2095	PISTON-ENGINE L,0.50	AR
13037	13037-2453	CRANKSHAFT	1
13251	13251-6025	ROD-ASSY-CONNECTING	1
13251A	13251-6027	ROD-ASSY-CONNECTING, U/S=0.50	AR
59056	59056-2726	GEAR-HELICAL	1
92033	92033-2161	RING-SNAP	2
92038	92038-2093	KEY	1
92038A	92038-2099	KEY	1
92150	92150-2122	BOLT,CONNECTING ROD	2



Ref. No.	Parts No.	Description	Quantity
12004	12004-2090	VALVE-INTAKE	1
12005	12005-2074	VALVE-EXHAUST	1
12009	12009-2068	RETAINER-VALVE SPRING	2
12016	12016-2062	ARM-ROCKER	2
12032	12032-2065	TAPPET	2
13070	13070-2072	GUIDE	1
13116	13116-2065	ROD-PUSH	2
21118	21118-2090	DECOMPRESSOR	1
49078	49078-2073	SPRING-ENGINEVALVE	2
49118	49118-2119	CAMSHAFT-COMP	1
92015	92015-2240	NUT	2
92015A	92015-2253	NUT	2
92043	92043-2168	PIN	3
92081	92081-2342	SPRING	1
92150	92150-2102	BOLT	2

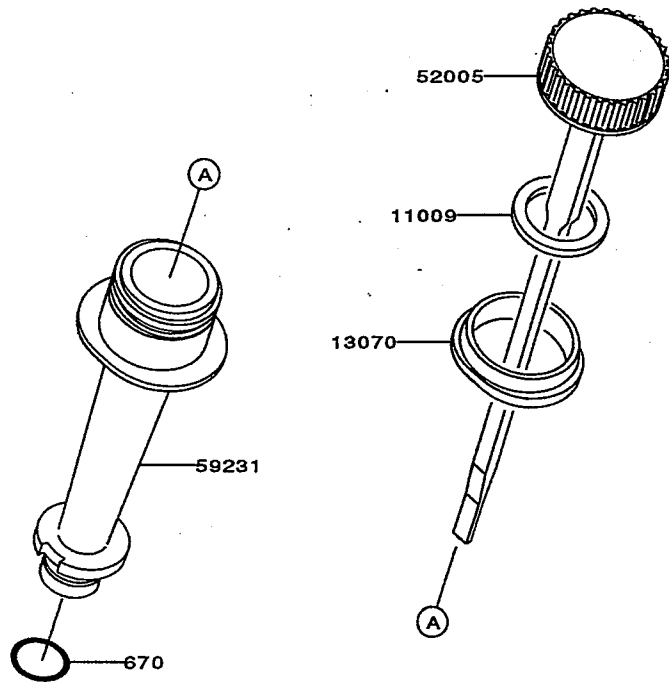
This catalog covers:
FC150V-□ C50

04

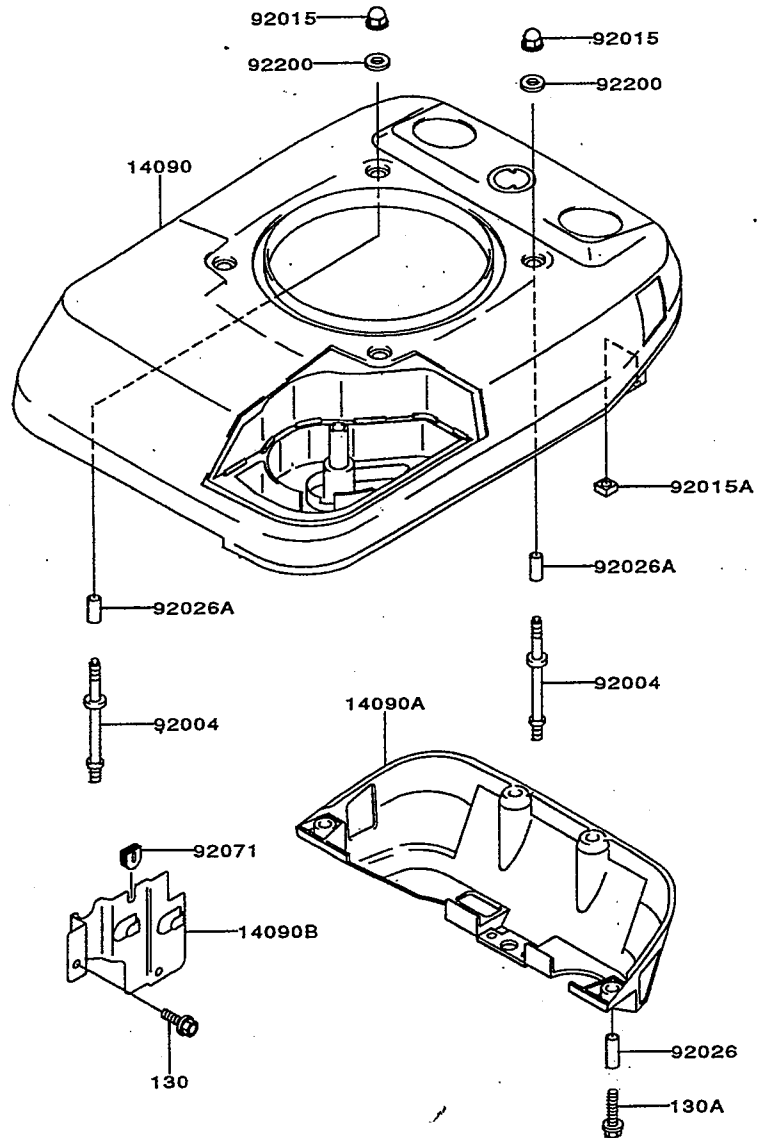
This fig. covers:
LUBRICATION-EQUIPMENT

E0140-A021A

Ref. No.	Parts No.	Description	Quantity
11009	11009-2346	GASKET,OIL GAUGE	1
13070	13070-2078	GUIDE	1
52005	52005-2124	GAUGE	1
59231	59231-2071	FILLER	1
670	670D2016	O RING	1



E0150-A150B



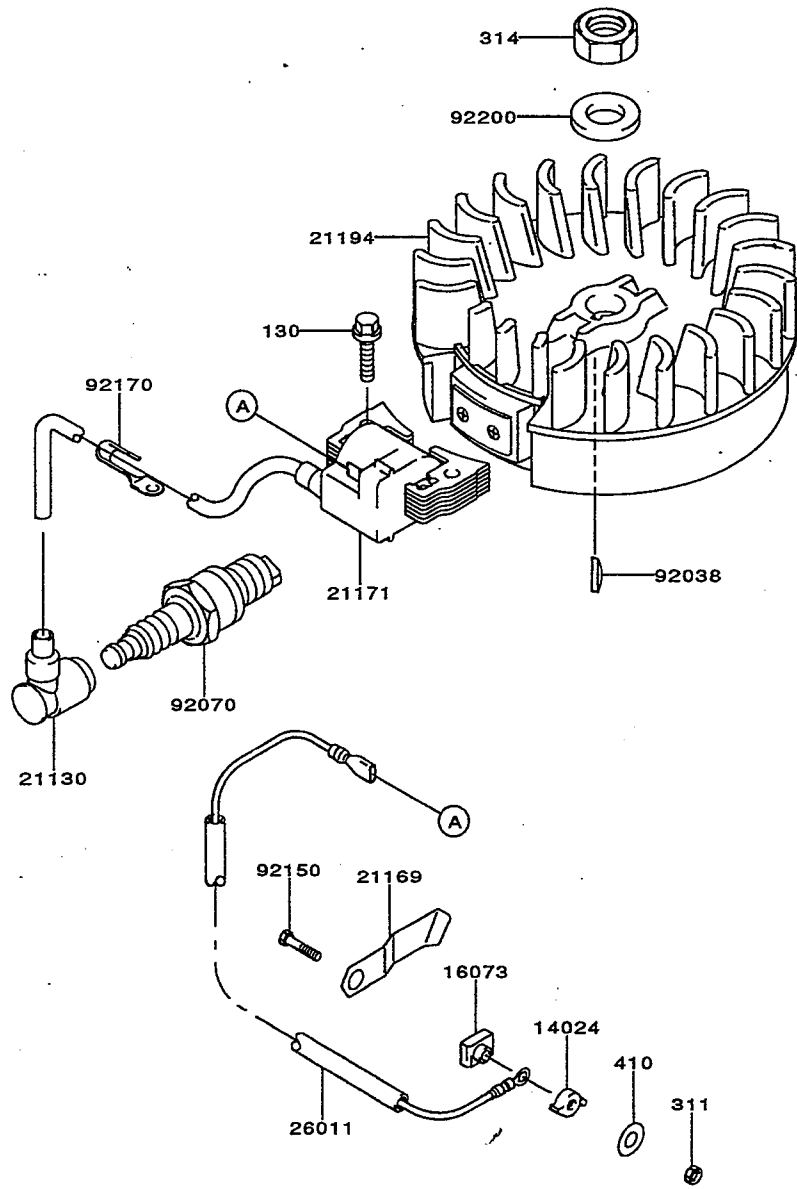
Ref. No.	Parts No.	Description	Quantity
14090	14090-2007	COVER,UPPER	1
14090A	14090-2011	COVER,LOWER	1
14090B	14090-2074	COVER	1
92004	92004-2117	STUD	4
92015	92015-1170	NUT	4
92015A	92015-2241	NUT,6MM	4
92026	92026-2273	SPACER,6.2X7.8X17	4
92026A	92026-2274	SPACER,6.2X7.8X22	4
92071	92071-2113	GROMMET	1
92200	92200-2078	WASHER,6.5X18X2.0	4
130	130B0510	BOLT-FLANGED	2
130A	130G0625	BOLT-FLANGED	4

This catalog covers:
FC150V-□ C50

06

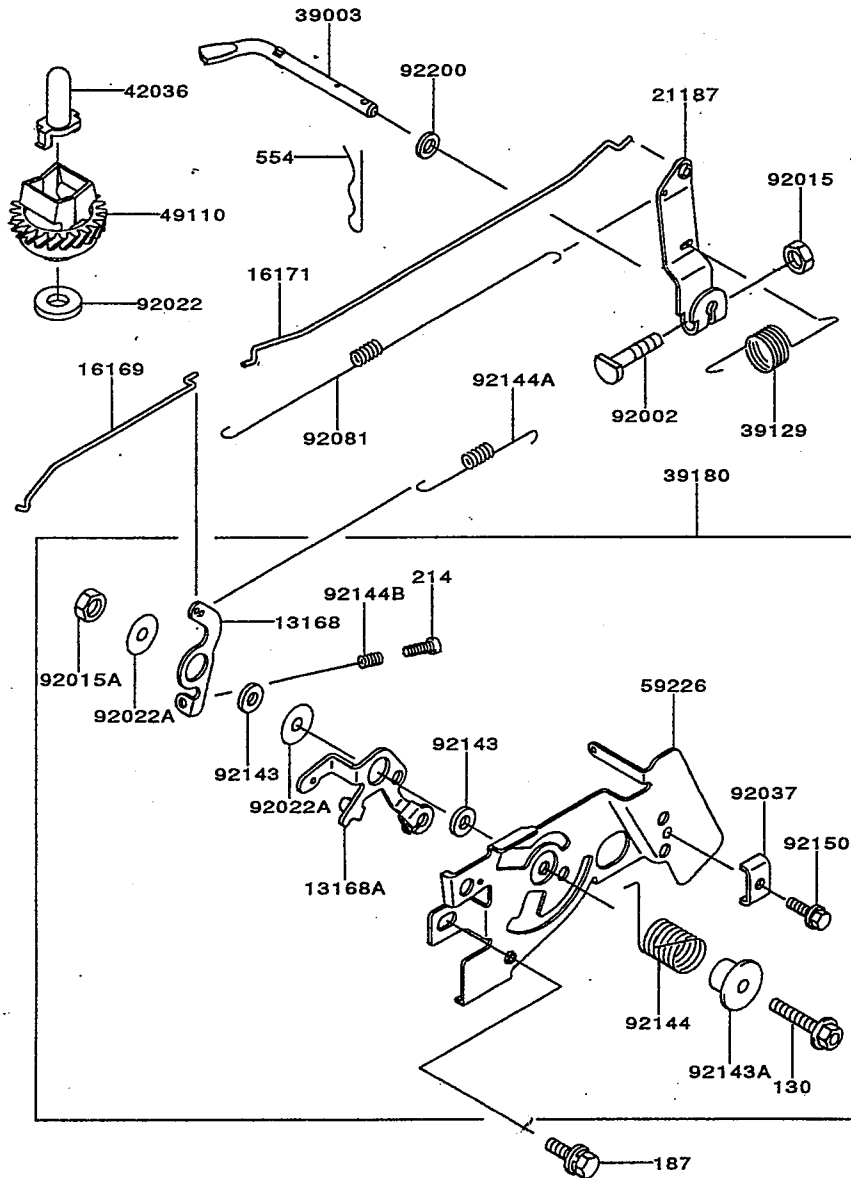
This fig. covers:
ELECTRIC-EQUIPMENT

E0160-A317A



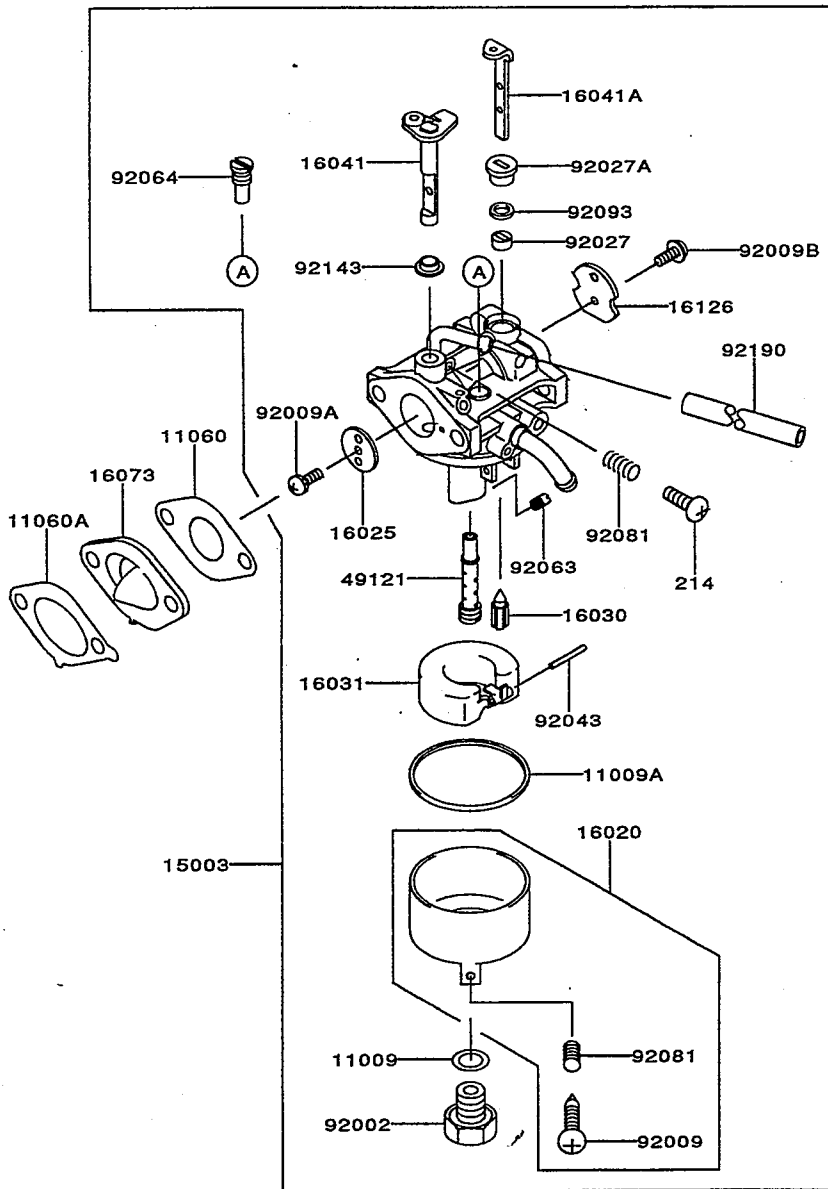
Ref. No.	Parts No.	Description	Quantity
14024	14024-2183	COVER	1
16073	16073-2124	INSULATOR	1
21130	21130-2060	CAP-SPARK PLUG	1
21169	21169-2066	TERMINAL	1
21171	21171-2200	COIL-ASSY-IGNITION	1
21194	21194-2290	FLYWHEEL-COMP	1
26011	26011-2306	WIRE-LEAD	1
92038	92038-2077	KEY	1
92070	92070-2088	PLUG-SPARK,BPR5ES(NGK)	1
92150	92150-2300	BOLT,4X20	1
92170	92170-2064	CLAMP	1
92200	92200-2079	WASHER	1
130	130G0625	BOLT-FLANGED	2
311	311B0400	NUT-HEX	1
314	314G1400	NUT-HEX-FINE	1
410	410B0400	W-PLAIN-S	1

E0170-A065E



Ref. No.	Parts No.	Description	Quantity
13168	13168-2288	LEVER	1
13168A	13168-2298	LEVER	1
16169	16169-2125	LINK-CHOKE	1
16171	16171-2080	LINK	1
21187	21187-2060	ARM-ASSY	1
39003	39003-2071	ARM-PIVOT	1
39129	39129-2067	SPRING-GOVERNOR	1
39180	39180-2904	PANEL-ASSY-CONTROL	1
42036	42036-2051	SLEEVE	1
49110	49110-2081	GOVERNOR-ASSY	1
59226	59226-2293	PANEL-CONTROL	1
92002	92002-2269	BOLT	1
92015	92015-1193	NUT	1
92015A	92015-2051	NUT	1
92022	92022-2019	WASHER	1
92022A	92022-2372	WASHER,6X19X1.2	2
92037	92037-2209	CLAMP	1
92081	92081-2299	SPRING,LINK	1
92143	92143-2135	COLLAR,6X13X2.3	2
92143A	92143-2148	COLLAR	1
92144	92144-2211	SPRING	1
92144A	92144-2235	SPRING	1
92144B	92144-2266	SPRING	1
92150	92150-2182	BOLT,5X18	1
92200	92200-2029	WASHER,6.5X11.5X2.0	1
130	130B0630	BOLT-FLANGED	1
187	187B0614	BOLT-UPSET-WSP	2
214	214B0420	SCREW-PAN+	1
554	554A0600	PIN-SNAP	1

E0180-A199A



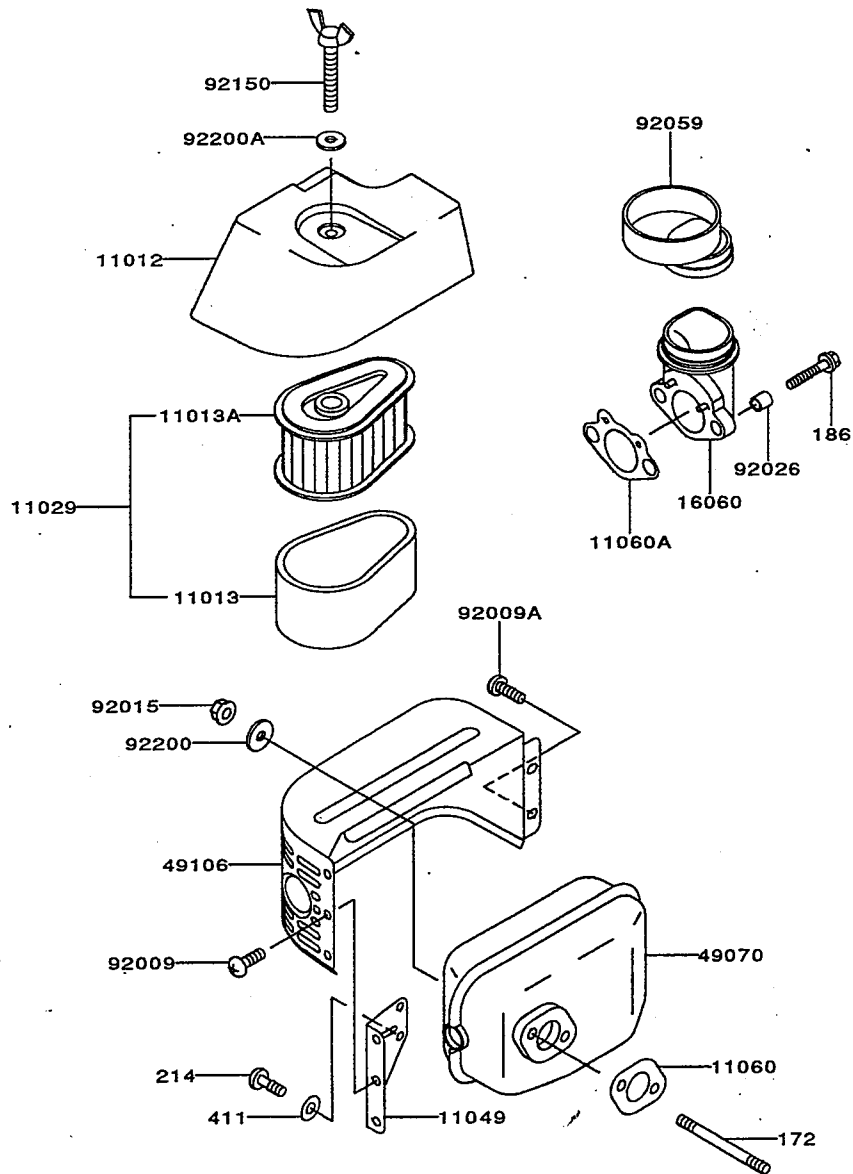
Ref. No.	Parts No.	Description	Quantity
11009	11009-2036	GASKET	1
11009A	11009-2037	GASKET	1
11060	11060-2010	GASKET,CARBURETOR	1
11060A	11060-2012	GASKET,INSULATOR	1
15003	15003-2348	CARBURETOR-ASSY	1
16020	16020-2052	CHAMBER-FLOAT	1
16025	16025-2001	VALVE-THROTTLE,#110	1
16030	16030-2083	VALVE-FLOAT	1
16031	16031-2058	FLOAT	1
16041	16041-2178	SHAFT-CARBURETOR,THROTTLE	1
16041A	16041-2197	SHAFT-CARBURETOR,CHOKE	1
16073	16073-2136	INSULATOR	1
16126	16126-2205	VALVE	1
49121	49121-2203	NOZZLE-MAIN	1
92002	92002-2011	BOLT	1
92009	92009-2015	SCREW	1
92009A	92009-2024	SCREW	1
92009B	92009-2149	SCREW	2
92027	92027-2003	COLLAR	1
92027A	92027-2004	COLLAR	1
92043	92043-2006	PIN	1
92063	92063-2288	JET-MAIN	1
92064	92064-2106	JET-PILOT	1
92081	92081-2009	SPRING	2
92093	92093-2101	SEAL	1
92143	92143-2143	COLLAR	1
92190	92190-2163	TUBE,4X7X125	1
214	214B0412	SCREW-PAN+	1

This catalog covers:
FC150V-□ C50

09

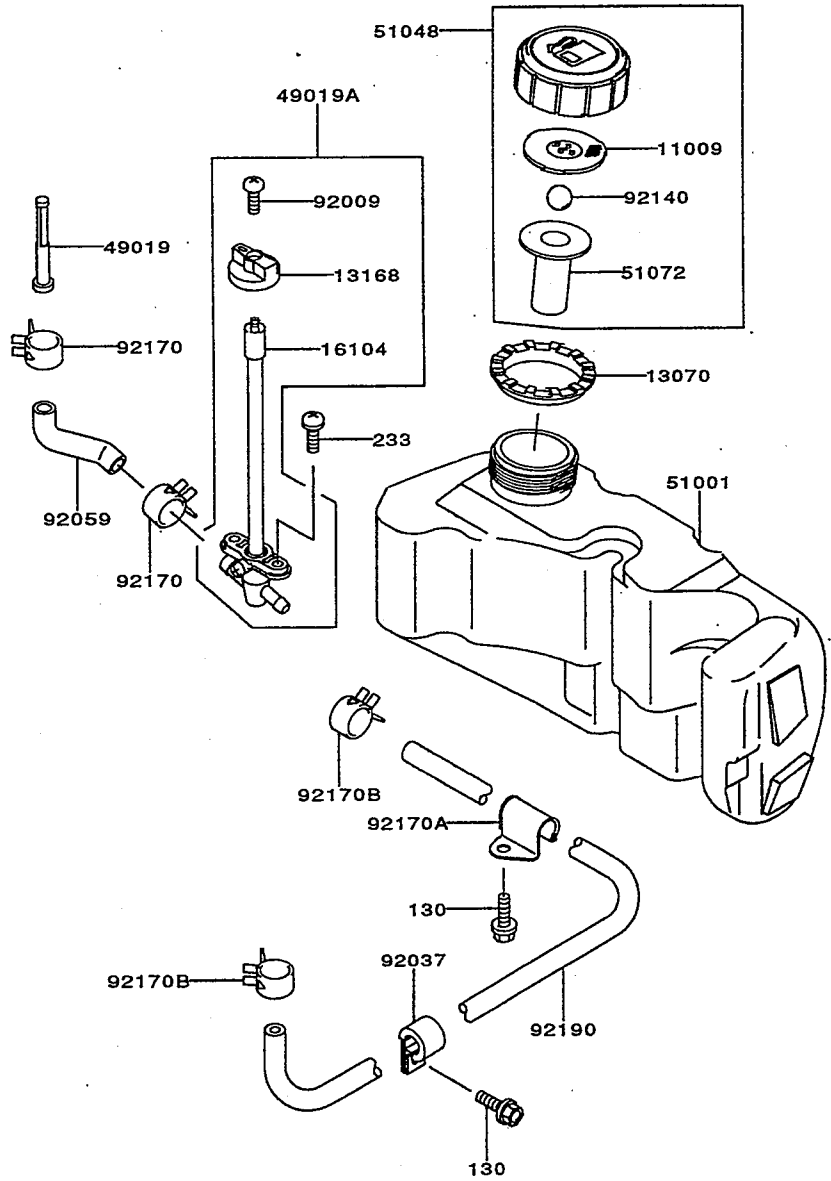
This fig. covers:
AIR-FILTER/MUFFLER

E0190-A046D



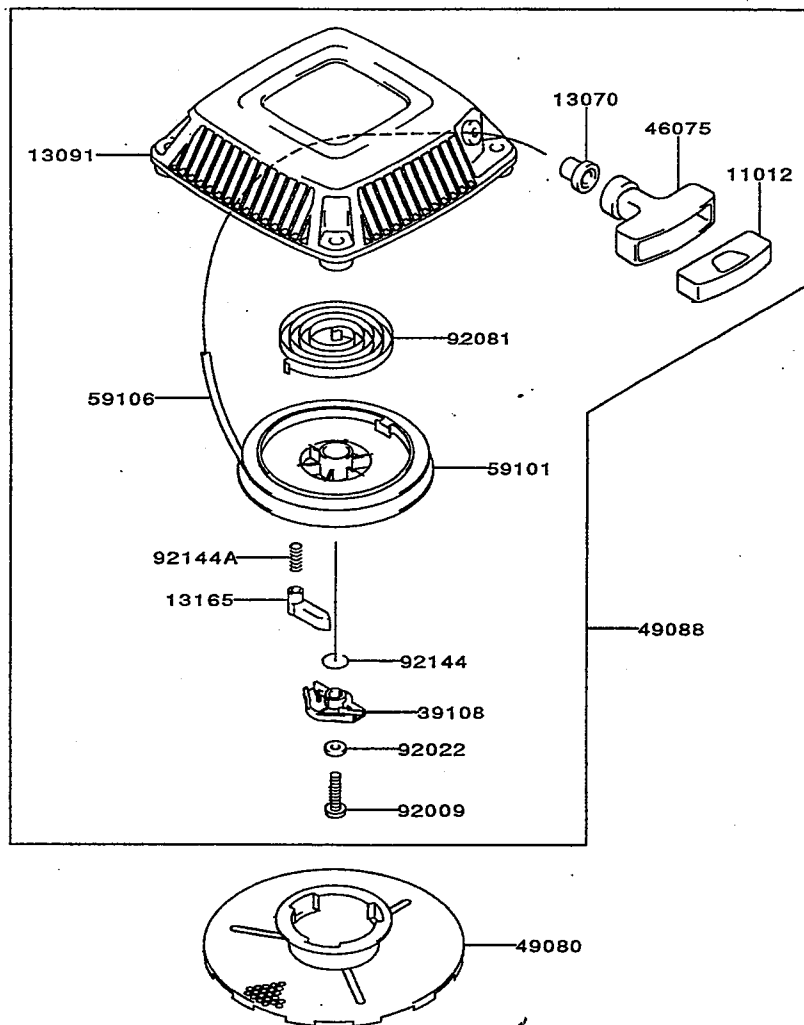
Ref. No.	Parts No.	Description	Quantity
11012	11012-2311	CAP,AIR FILTER	1
11013	11013-2174	ELEMENT-AIR FILTER	1
11013A	11013-2175	ELEMENT-AIR FILTER	1
11029	11029-2010	ELEMENT-ASSY-AIR FILTER	1
11049	11049-2002	BRACKET	1
11060	11060-2009	GASKET,MUFFLER	1
11060A	11060-2067	GASKET,INTAKE PIPE	1
16060	16060-2182	PIPE-INTAKE	1
49070	49070-2461	MUFFLER-COMP	1
49106	49106-2430	COVER-MUFFLER	1
92009	92009-2166	SCREW,5X8	3
92009A	92009-2308	SCREW	2
92015	92015-1193	NUT	2
92026	92026-2272	SPACER,6.2X7.8X8	2
92059	92059-2257	TUBE	1
92150	92150-2101	BOLT	1
92200	92200-2032	WASHER,7X21X2.3	2
92200A	92200-2078	WASHER,6.5X18X2.0	1
172	172G0680	BOLT-STUD	2
186	186B0680	BOLT-UPSET-WP	2
214	214B0510	SCREW-PAN+	2
411	411B0500	WASHER-PLAIN	2

E0200-A143A



Ref. No.	Parts No.	Description	Quantity
			G
11009	11009-2865	GASKET	1
13070	13070-2077	GUIDE	1
13168	13168-2303	LEVER	1
16104	16104-2052	FILTER-COMP	1
49019	49019-2091	FILTER-FUEL	1
49019A	49019-2094	FILTER-FUEL	1
51001	51001-2214	TANK-COMP-FUEL	1
51048	51048-2070	CAP-ASSY-TANK	1
51072	51072-2058	CHAMBER-FUEL	1
92009	92009-2296	SCREW	1
92037	92037-2202	CLAMP	1
92059	92059-2262	TUBE	1
92140	92140-2059	BALL	1
92170	92170-2009	CLAMP	2
92170A	92170-2037	CLAMP	1
92170B	92170-2043	CLAMP	2
92190	92190-2068	TUBE,4.8X10.3X415	1
130	130B0612	BOLT-FLANGED	2
233	233B0510	SCREW-PAN-WP+	2

E0210-A102A



Ref. No.	Parts No.	Description	Quantity
11012	11012-2255	CAP,GRIP	1
13070	13070-2064	GUIDE,ROPE	1
13091	13091-2113	HOLDER,RECOIL	1
13165	13165-2072	PAWL,RECOIL STARTER	1
39108	39108-2059	RETAINER-SPRING	1
46075	46075-2082	GRIP,RECOIL STARTER	1
49080	49080-2143	PULLEY-STARTING	1
49088	49088-2379	STARTER-RECOIL	1
59101	59101-2079	REEL,RECOIL STARTER	1
59106	59106-2115	ROPE,3.8X1600	1
92009	92009-2280	SCREW,5X18	1
92022	92022-2384	WASHER,5X12.8X1.2	1
92081	92081-2265	SPRING,RECOIL	1
92144	92144-2176	SPRING	1
92144A	92144-2177	SPRING,RETURN	1

This catalog covers:
FC150V-□ C50

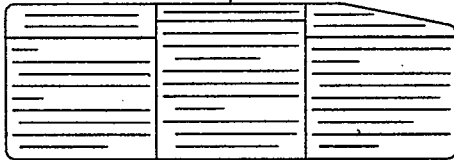
12

This fig. covers:
LABEL

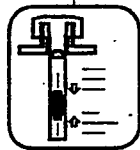
F0290-A302A

Ref. No.	Parts No.	Description	Quantity
56031	56031-2375	LABEL-MANUAL	1
56031A	56031-2376	LABEL-MANUAL	1
56038	56038-2542	LABEL-BRAND	1
56070	56070-2021	LABEL-WARNING	1

56031



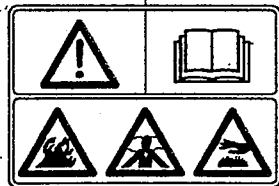
56031A



56038



56070



PART NAME INDEX

AIR-FILTER/MUFFLER	09
CARBURETOR	08
CONTROL-EQUIPMENT	07
COOLING-EQUIPMENT	05
CYLINDER/CRANKCASE	01
ELECTRIC-EQUIPMENT	06
FUEL-TANK/FUEL-VALVE	10
LABEL	12
LUBRICATION-EQUIPMENT	04
PISTON/CRANKSHAFT	02
STARTER	11
VALVE/CAMSHAFT	03

This catalog covers:
FC150V-□ C50

This fig. covers.
NUMERICAL PARTS INDEX

Parts No.	Fig. No.	Parts No.	Fig. No.	Parts No.	Fig. No.	Parts No.	Fig. No.	Parts No.	Fig. No.
11004-2099	01	14090-2007	05	51048-2070	10	92066-2180	01		
11008-6023	01	14090-2011	05	51072-2058	10	92070-2088	06		
11009-2036	08	14090-2074	05	52005-2124	04	92071-2113	05		
11009-2037	08	14090-2087	01	551A0612	01	92081-2009	08		
11009-2346	04	15003-2348	08	554A0600	07	92081-2265	11		
11009-2848	01	16020-2052	08	56031-2375	12	92081-2299	07		
11009-2865	10	16025-2001	08	56031-2376	12	92081-2342	03		
11012-2255	11	16030-2083	08	56038-2542	12	92093-2101	08		
11012-2311	09	16031-2058	08	56070-2021	12	92140-2059	10		
11013-2174	09	16041-2178	08	59056-2726	02	92143-2135	07		
11013-2175	09	16041-2197	08	59056-2790	01	92143-2143	08		
11022-2057	01	16060-2182	09	59101-2079	11	92143-2148	07		
11029-2010	09	16073-2124	06	59106-2115	11	92144-2176	11		
11049-2002	09	16073-2136	08	59226-2293	07	92144-2177	11		
11060-2007	01	16104-2052	10	59231-2071	04	92144-2211	07		
11060-2009	09	16126-2201	01	601B6205	01	92144-2235	07		
11060-2010	08	16126-2202	01	670D2015	01	92144-2266	07		
11060-2011	01	16126-2205	08	670D2016	04	92150-2101	09		
11060-2012	08	16169-2125	07	92002-2011	08	92150-2102	03		
11060-2067	09	16171-2080	07	92002-2269	07	92150-2122	02		
12004-2090	03	172G0680	09	92004-2117	05	92150-2182	07		
12005-2074	03	186B0680	09	92009-2015	08	92150-2300	06		
12009-2068	03	187B0510	01	92009-2024	08	92170-2009	10		
12016-2062	03	187B0614	07	92009-2149	08	92170-2037	10		
12032-2065	03	21083-2062	01	92009-2166	01	92170-2043	10		
130B0510	01	21118-2090	03	92009-2166	09	92170-2064	06		
130B0510	05	21130-2060	06	92009-2280	11	92190-2068	10		
130B0612	01	21169-2066	06	92009-2296	10	92190-2163	08		
130B0612	10	21171-2200	06	92009-2308	09	92200-2026	01		
130B0630	07	21187-2060	07	92015-1170	05	92200-2029	07		
130G0625	01	21194-2290	06	92015-1193	07	92200-2032	09		
130G0625	05	214B0412	08	92015-1193	09	92200-2033	01		
130G0625	06	214B0420	07	92015-2051	07	92200-2034	01		
130G0645	01	214B0510	09	92015-2240	03	92200-2078	05		
130G0845	01	233B0510	10	92015-2241	05	92200-2078	09		
13001-2109	02	26011-2306	06	92015-2253	03	92200-2079	06		
13002-2074	02	311B0400	06	92022-2019	07				
13008-6030	02	314G1400	06	92022-2372	07				
13025-6003	02	39003-2071	07	92022-2384	11				
13025-6004	02	39108-2059	11	92026-2272	09				
13029-2094	02	39129-2067	07	92026-2273	05				
13029-2095	02	39180-2904	07	92026-2274	05				
13037-2453	02	410B0400	06	92027-2003	08				
13070-2064	11	411B0500	09	92027-2004	08				
13070-2072	03	42036-2051	07	92033-2161	02				
13070-2077	10	46075-2082	11	92037-2202	10				
13070-2078	04	49015-6088	01	92037-2209	07				
13091-2113	11	49019-2091	10	92038-2077	06				
13107-2202	01	49019-2094	10	92038-2093	02				
13107-2220	01	49070-2461	09	92038-2099	02				
13116-2065	03	49073-2055	01	92043-1264	01				
13165-2072	11	49078-2073	03	92043-2006	08				
13168-2288	07	49080-2143	11	92043-2168	03				
13168-2298	07	49088-2379	11	92049-2208	05				
13168-2303	10	49106-2430	09	92049-2229	01				
13251-6025	02	49110-2081	07	92059-2256	01				
13251-6027	02	49118-2119	03	92059-2257	09				
13270-2049	01	49120-2246	01	92059-2262	10				
13270-2050	01	49121-2203	08	92063-2288	08				
14024-2183	06	51001-2214	10	92064-2106	08				