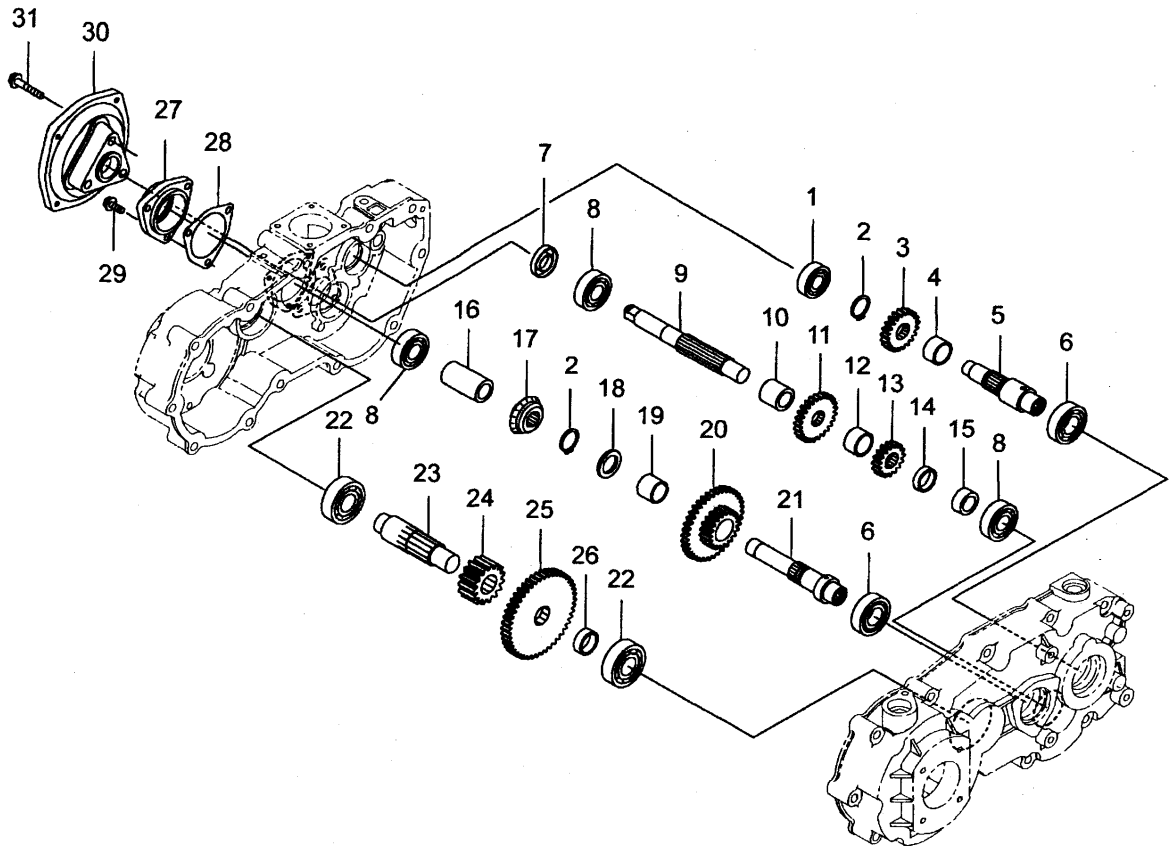


Contents

FE29-DC01(SRA950F-TRANS MISSION)

GEAR BOX(1).....	Fig.001
GEAR BOX(2).....	Fig.002
GEAR BOX(3).....	Fig.003
GEAR BOX(4).....	Fig.004

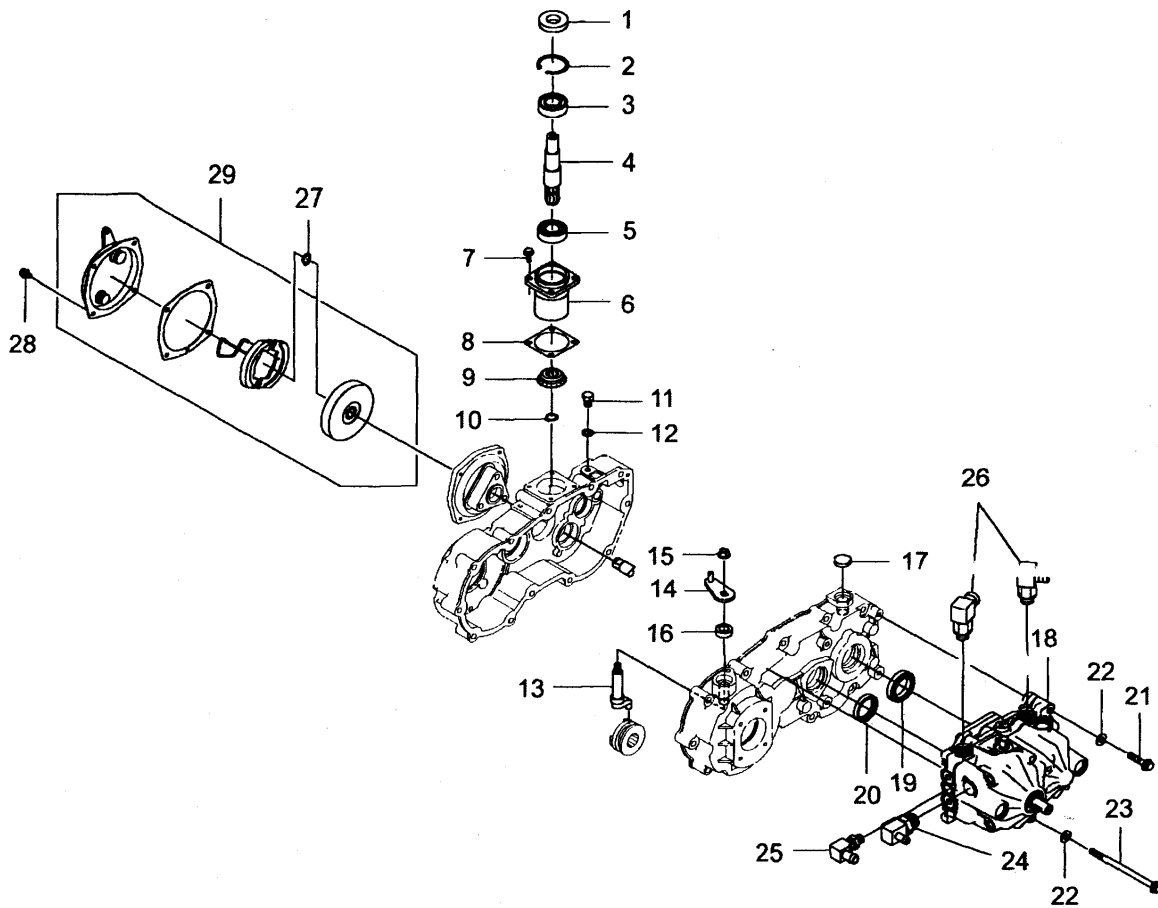
FIG.002 GEAR BOX(2)



SI01-002 -0100

KEY	PART CODE	DESCRIPTION	S P C	TYPE OF MODEL		I T C	C O L	G R P	REMARKS
				FE29	DC01				
1	9050-162-020-00	BEARING,RB(6202)	*	1					0501-620200
2	9060-002-000-00	STOP RING/S/20	*	2					0600-020000
3	9212-247-010-10	GEAR A21	*	1					2122-470101
4	9210-342-270-90	COLLAR/202514.5	*	1					2103-422709
5	9213-350-590-40	SHAFT B	*	1					2133-505904
6	9050-160-040-00	BEARING,BALL	*	2					0501-600400
7	9210-441-230-90	OIL SEALS 17326	*	1					2104-412309
8	9050-162-030-00	BEARING,RB(6203)	*	3					0501-620300
9	9213-350-600-00	SHAFT C	*	1					2133-506000
10	9210-343-480-50	COLLAR 172523.5	*	1					2103-434805
11	9212-240-830-40	GEAR F25	*	1					2122-408304
12	9210-340-370-00	COLLAR 202515	*	1					2103-403700
13	9212-242-221-00	GEAR H16	*	1					2122-422210
14	9210-342-300-30	COLLAR 20257	*	1					2103-423003
15	9210-340-170-60	COLLAR 172511.5	*	1					2103-401706
16	9210-345-420-70	COLLAR 172549	*	1					2103-454207
17	9212-041-451-00	SPIRAL BEVEL 20R	*	1					2120-414510
18	9210-242-791-40	WASHER 20303	*	1					2102-427914
19	9053-120-241-70	BEARING/NEEDLE	*	1					0531-202417
20	9233-035-220-20	GEAR CI COMP	*	1					2330-352202
21	9213-350-581-60	SHAFT A	*	1					2133-505816
22	9050-162-040-00	BEARING,RB(6204)	*	2					0501-620400
23	9213-240-450-10	SHAFT D	*	1					2132-404501
24	9212-240-430-60	GEAR K15	*	1					2122-404306
25	9212-240-630-00	GEAR J46	*	1					2122-406300
26	9210-341-210-20	COLLAR/20259	*	1					2103-412102
27	9211-240-400-20	BEARING COVER	*	1					2112-404002
28	9215-342-460-90	PK BEARING COVER	*	1					2153-424609
29	9015-706-015-00	6FLANGE BOLT M6X15L	*	3					0157-060150
30	9211-261-350-50	BRAKE HITCH	*	1					2112-613505

FIG.004 GEAR BOX(4)



SI01-004-0100

KEY	PART CODE	DESCRIPTION	S P C	TYPE OF MODEL		I T C	C O L	G R P	REMARKS
				FE29	DC01				
1	9210-443-360-90	OIL SEALS 20428	*	1					2104-433609
2	9061-004-200-00	CLIP/42/H	*	1					0610-042000
3	9050-160-044-00	BEARING,RB(6004DD)	*	1					0501-600440
4	9213-350-611-00	BEVEL SHAFT	*	1					2133-506110
5	9050-160-040-00	BEARING,BALL	*	1					0501-600400
6	9211-261-360-40	BEVEL SHAFT CASE	*	1					2112-613604
7	9015-706-020-00	6FLANGE BOLT M6X20L	*	4					0157-060200
8	9215-342-600-90	PK BEVEL SHAFT CASE	*	1					2153-426009
9	9212-041-441-10	SPIRAL BEVEL 20L	*	1					2120-414411
10	9060-001-500-00	STOP RING/S/15	*	1					0600-015000
11	9210-143-690-00	BOLT 10-12	*	1					2101-436900
12	9210-541-850-80	GASKET 10	*	1					2105-418508
13	9214-440-530-50	SHIFTER(DIFF)	*	1					2144-405305
14	9234-040-730-90	LEVER/SC	*	1					2340-407309
15	9210-143-250-60	NUT,FLANGE/8	*	13					2101-432506
16	9210-440-040-10	SEAL,OIL/14248	*	1					2104-400401
17	9210-442-010-00	PLUG 24	*	1					2104-420100
18	9215-960-130-10	HST(KHS-13JD4	*	1					2159-601301
19	9210-345-440-50	SPACER(HST/OUT)	*	1					2103-454405
20	9210-345-430-60	SPACER(HST/IN)	*	1					2103-454306
21	9015-708-060-00	8FLANGE BOLT M8X60L	*	2					0157-080600
22	9040-008-000-00	WASHER/8	*	4					0400-080000
23	9015-708-130-00	8FLANGE BOLT M8X130L	*	2					0157-081300
24	9215-940-950-30	ELBOW G1/4	*	1					2159-409503
25	9215-940-940-40	ELBOW 7/8-14UNF	*	1					2159-409404
26	9215-940-960-20	ELBOW G3/8	*	2					2159-409602
27	9060-001-400-00	STOP RING/S/14	*	1					0600-014000
28	9015-406-010-00	6FLANGE BOLT M6X10L	*	4					0154-060100
29	9243-560-730-20	BRAKE ASSY	*	1					2435-607302

Numerical Index

SI01-097-180-00

Part Code	Fig. Key	Part Code	Fig. Key	Part Code	Fig. Key
9015-406-010-00	4 28	9210-442-010-00	4 17	9231-047-030-00	3 10
9015-706-015-00	2 29	9210-443-360-90	4 1	9233-035-220-20	2 20
9015-706-020-00	4 7	9210-540-010-30	1 10	9234-040-730-90	4 14
9015-708-020-00	3 12	9210-540-672-10	1 13	9243-560-730-20	4 29
9015-708-035-00	2 31	9210-541-470-80	1 11		
9015-708-060-00	4 21	9210-541-850-80	4 12		
9015-708-070-00	1 5	9211-183-104-90	1 1		
9015-708-100-00	1 6	9211-183-540-90	1 2		
9015-708-130-00	4 23	9211-240-400-20	2 27		
9017-708-030-20	1 14	9211-261-350-50	2 30		
9040-008-000-00	4 22	9211-261-360-40	4 6		
9045-208-016-00	3 7	9212-040-188-00	3 2		
9046-005-028-00	3 8	9212-041-430-10	3 3		
9050-160-040-00	2 6	9212-041-441-10	4 9		
	4 5	9212-041-451-00	2 17		
9050-160-044-00	4 3	9212-240-430-60	2 24		
9050-160-050-00	3 13	9212-240-630-00	2 25		
9050-162-020-00	2 1	9212-240-830-40	2 11		
9050-162-030-00	2 8	9212-242-221-00	2 13		
9050-162-040-00	2 22	9212-247-010-10	2 3		
9050-162-050-00	3 18	9212-940-572-40	3 6		
9053-120-241-70	2 19	9213-140-500-40	3 4		
9060-001-400-00	4 27	9213-240-450-10	2 23		
9060-001-500-00	4 10	9213-350-560-70	3 17		
9060-002-000-00	2 2	9213-350-570-60	3 16		
9061-004-200-00	4 2	9213-350-581-60	2 21		
9210-140-980-30	3 14	9213-350-590-40	2 5		
9210-140-990-20	3 19	9213-350-600-00	2 9		
9210-143-250-60	1 7	9213-350-611-00	4 4		
	4 15	9213-540-323-70	3 9		
9210-143-690-00	4 11	9213-660-030-30	3 1		
9210-143-730-30	3 5	9214-440-530-50	4 13		
9210-242-791-40	2 18	9215-041-360-20	1 12		
9210-340-170-60	2 15	9215-240-610-30	1 9		
9210-340-370-00	2 12	9215-341-011-40	3 20		
9210-341-210-20	2 26	9215-342-460-90	2 28		
9210-342-270-90	2 4	9215-342-600-90	4 8		
9210-342-300-30	2 14	9215-370-480-40	1 3		
9210-343-480-50	2 10	9215-540-170-90	1 4		
9210-345-420-70	2 16	9215-640-090-90	1 8		
9210-345-430-60	4 20	9215-940-940-40	4 25		
9210-345-440-50	4 19	9215-940-950-30	4 24		
9210-440-040-10	4 16	9215-940-960-20	4 26		
9210-440-880-30	3 15	9215-960-130-10	4 18		
9210-441-230-90	2 7	9231-047-020-10	3 11		

Alphabetical Index

SI01-097-180-00

Description	Fig. Key	Description	Fig. Key	Description	Fig. Key
5 PIN S 5X28L	3 8	FALANGE BOLT M8X55L	3 5	STOP RING/S/20	2 2
6FLANGE BOLT M6X10L	4 28	G SHAFT L	3 17	STUD/8	1 14
6FLANGE BOLT M6X15L	2 29	G SHAFT R	3 16	WASHER 20303	2 18
6FLANGE BOLT M6X20L	4 7	GASKET 8	1 11	WASHER/8	4 22
8 PIN 8X161	3 7	GASKET 10	4 12		
8FLANGE BOLT M8X100L	1 6	GEAR A21	2 3		
8FLANGE BOLT M8X130L	4 23	GEAR CI COMP	2 20		
8FLANGE BOLT M8X20L	3 12	GEAR F25	2 11		
8FLANGE BOLT M8X35L	2 31	GEAR H16	2 13		
8FLANGE BOLT M8X60L	4 21	GEAR J46	2 25		
8FLANGE BOLT M8X70L	1 5	GEAR K15	2 24		
AIR BLEEING	1 12	GEAR L48	3 6		
BEARING COVER	2 27	HOOKE, SPRING	1 8		
BEARING, BALL	2 6	HST (KHS-13JD4	4 18		
	4 5	LEVER/SC	4 14		
BEARING, RB (6004DD)	4 3	NUT, FLANGE/8	1 7		
BEARING, RB (6005)	3 13		4 15		
BEARING, RB (6202)	2 1	OIL SEALS 17326	2 7		
BEARING, RB (6203)	2 8	OIL SEALS 20428	4 1		
BEARING, RB (6204)	2 22	OIL SEALS 25477	3 15		
BEARING, RB (6205)	3 18	PACKING, CASE	3 20		
BEARING/NEEDLE	2 19	PIPE, KNOUCK/8	1 4		
BEVEL PINION	3 2	PK BEARING COVER	2 28		
BEVEL SHAFT	4 4	PK BEVEL SHAFT CASE	4 8		
BEVEL SHAFT CASE	4 6	PK CASE	1 3		
BOLT 10-12	4 11	PLUG 21	1 13		
BRAKE ASSY	4 29	PLUG 24	4 17		
BRAKE HITCH	2 30	PLUG M8X1.25	1 10		
CASE L	1 2	REVERSE SPRING	1 9		
CASE R	1 1	SEAL, OIL/14248	4 16		
CLIP/42/H	4 2	SHAFT A	2 21		
CLUTCH	3 9	SHAFT B	2 5		
COLLAR 172511.5	2 15	SHAFT C	2 9		
COLLAR 172523.5	2 10	SHAFT CASE L COMP	3 11		
COLLAR 172549	2 16	SHAFT CASE R COMP	3 10		
COLLAR 202515	2 12	SHAFT D	2 23		
COLLAR 20257	2 14	SHIFTER (DIFF)	4 13		
COLLAR/202514.5	2 4	SPACER (HST/IN)	4 20		
COLLAR/20259	2 26	SPACER (HST/OUT)	4 19		
DIFF. CASE	3 1	SPIRAL BEVEL 20L	4 9		
DIFF. SHAFT	3 4	SPIRAL BEVEL 20R	2 17		
DIFF. SIDE GEAR	3 3	STOP RING/R/47	3 14		
ELBOW 7/8-14UNF	4 25	STOP RING/R/52	3 19		
ELBOW G1/4	4 24	STOP RING/S/14	4 27		
ELBOW G3/8	4 26	STOP RING/S/15	4 10		