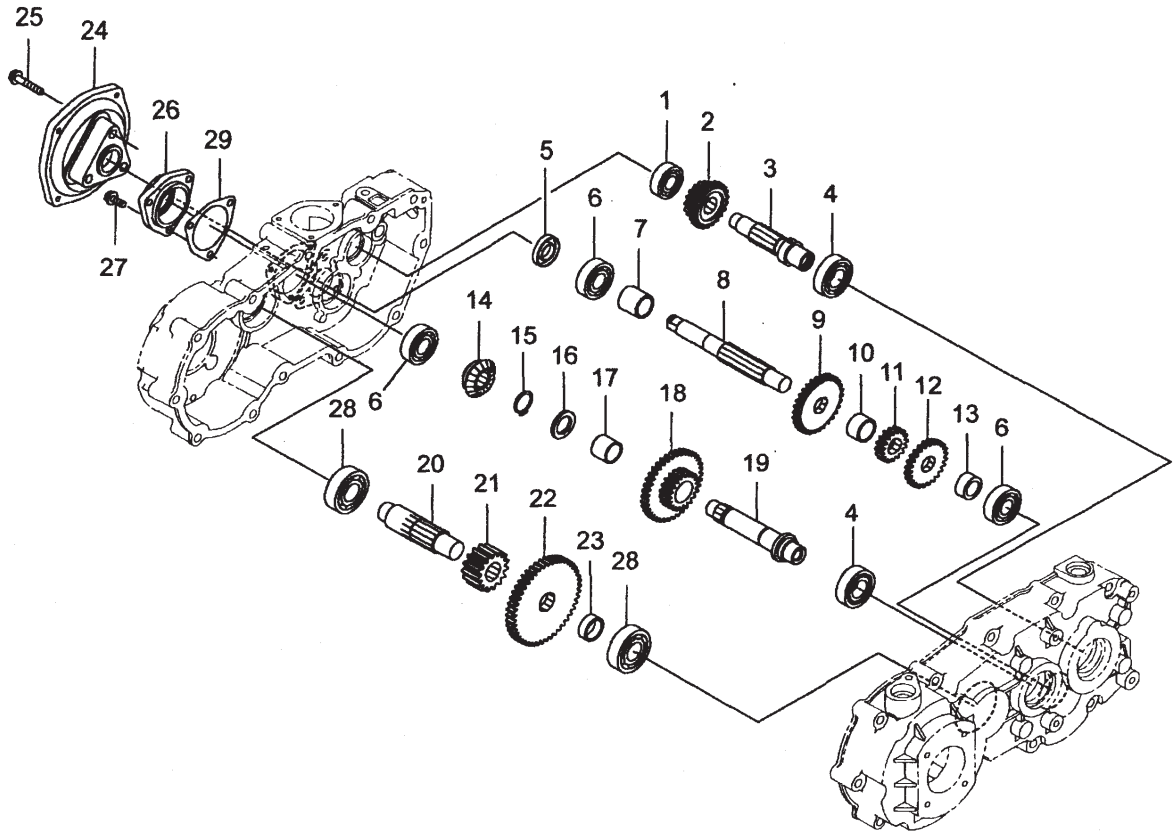


Contents

FE29-EB02(SRA800-TRANS MISSION)

GEAR BOX(1).....	Fig.001
GEAR BOX(2).....	Fig.002
GEAR BOX(3).....	Fig.003
GEAR BOX(4).....	Fig.004

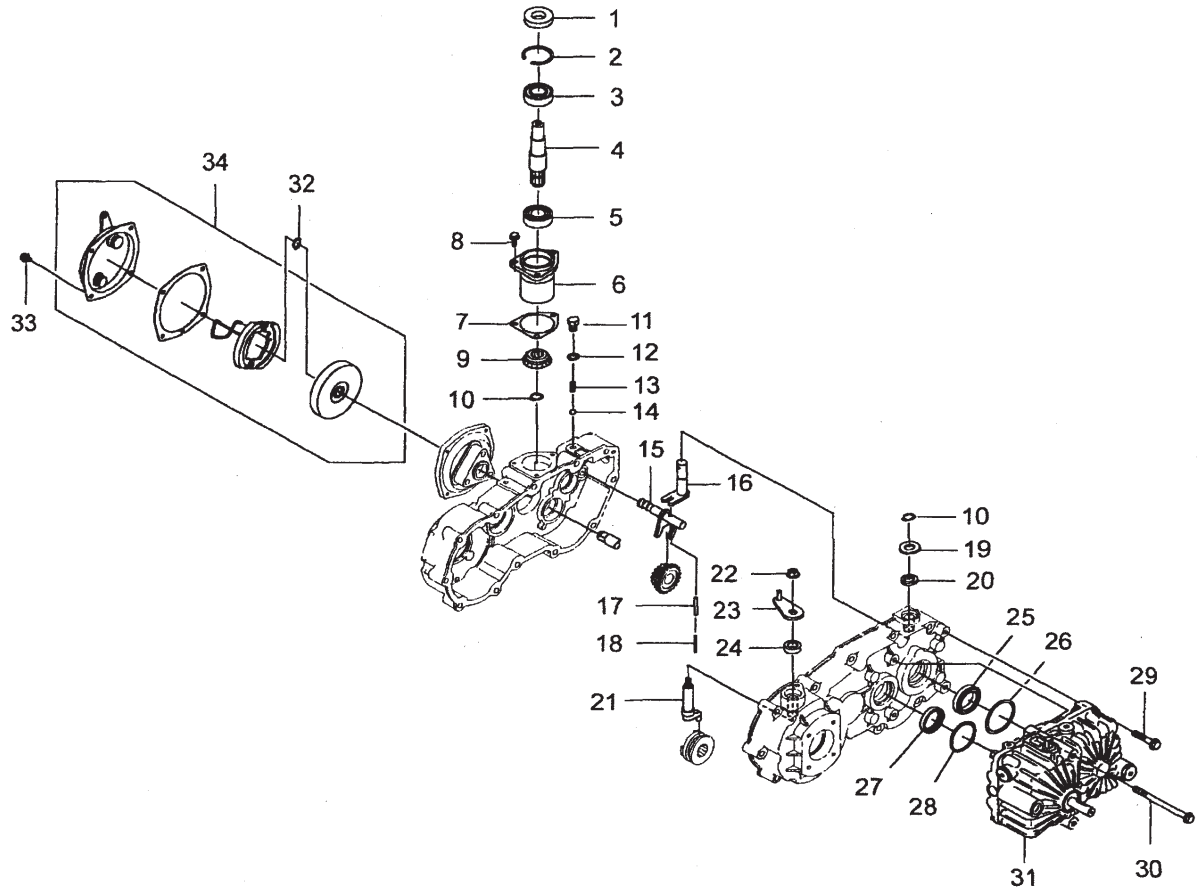
FIG.002 GEAR BOX(2)



SI01-002 -0100

KEY	PART CODE	DESCRIPTION	S P C	TYPE OF MODEL		I T C	C O L	G R P	REMARKS
				FE29	FB02				
1	9050-162-020-00	BEARING, RB(6202)	*	1					0501-620200
2	9212-246-510-30	GEAR/AB16-22	*	1					2122-465103
3	9233-034-801-40	SHAFT/B COMP	*	1					2330-348014
4	9050-160-040-00	BEARING, BALL	*	2					0501-600400
5	9210-441-230-90	OIL SEALS 17326	*	1					2104-412309
6	9050-162-030-00	BEARING, RB(6203)	*	3					0501-620300
7	9210-343-480-50	COLLAR/172523.5	*	1					2103-434805
8	9213-350-600-00	SHAFT C	*	1					2133-506000
9	9212-240-750-50	GEAR/F30	*	1					2122-407505
10	9210-340-370-00	COLLAR/202515	*	1					2103-403700
11	9212-242-221-00	GEAR H16	*	1					2122-422210
12	9212-243-180-90	GEAR/F24	*	1					2122-431809
13	9210-340-170-60	COLLAR/172511.5	*	1					2103-401706
14	9212-041-331-50	SPIRAL BEVEL/20R	*	1					2120-413315
15	9060-002-000-00	STOP RING/S/20	*	1					0600-020000
16	9210-242-791-40	WASHER/20303	*	1					2102-427914
17	9053-120-241-70	BEARING/NEEDLE	*	1					0531-202417
18	9233-035-220-20	GEAR CI COMP	*	1					2330-352202
19	9213-350-230-90	SHAFT/A	*	1					2133-502309
20	9213-240-450-10	SHAFT D	*	1					2132-404501
21	9212-240-430-60	GEAR K15	*	1					2122-404306
22	9212-240-630-00	GEAR J46	*	1					2122-406300
23	9210-341-210-20	COLLAR/20259	*	1					2103-412102
24	9211-261-350-50	BRAKE HITCH	*	1					2112-613505
25	9015-708-035-00	FLANGE BOLT/M8X35	*	3					0157-080350
26	9211-240-400-20	BEARING COVER	*	1					2112-404002
27	9015-706-015-00	FLANGE BOLT/M6X15	*	3					0157-060150
28	9050-162-040-00	BEARING, RB(6204)	*	2					0501-620400
29	9215-342-460-90	PK BEARING COVER	*	1					2153-424609

FIG.004 GEAR BOX(4)



SI01-004 -0100

KEY	PART CODE	DESCRIPTION	S P C	TYPE OF MODEL		I T C	C O L	G R P	REMARKS
				FE29	FB02				
1	9210-443-360-90	OIL SEALS 20428	*	1					2104-433609
2	9061-004-200-00	CLIP/42/H	*	1					0610-042000
3	9050-160-044-00	BEARING,RB(6004DD)	*	1					0501-600440
4	9213-344-811-50	BEVEL SHAFT	*	1					2133-448115
5	9050-160-040-00	BEARING,BALL	*	1					0501-600400
6	9211-261-260-70	BEVEL SHAFT CASE	*	1					2112-612607
7	9215-342-450-00	PK BEVEL SHAFT CASE	*	1					2153-424500
8	9015-706-015-00	FLANGE BOLT/M6X15	*	3					0157-060150
9	9212-041-321-60	SPRIAL BEVEL/20L	*	1					2120-413216
10	9060-001-500-00	STOP RING/S/15	*	2					0600-015000
11	9210-143-690-00	BOLT/10-12	*	1					2101-436900
12	9210-541-850-80	GASKET/10	*	1					2105-418508
13	9215-240-370-60	SPRING,HOOK	*	1					2152-403706
14	9065-005-016-00	STEEL BALL/5/16	*	1					0650-050160
15	9234-043-531-50	SHIFTER SHAFT COMP	*	1					2340-435315
16	9234-043-540-30	SHAFT CH COMP	*	1					2340-435403
17	9046-005-032-00	PIN/S/5X32	*	1					0460-050320
18	9046-003-032-00	PIN/S/3X32	*	1					0460-030320
19	9210-241-480-00	WASHER/15303	*	1					2102-414800
20	9210-440-010-40	OIL SEAL/15244	*	1					2104-400104
21	9214-440-530-50	SHIFTER(DIFF)	*	1					2144-405305
22	9210-143-250-60	NUT,FLANGE/8	*	1					2101-432506
23	9234-040-730-90	LEVER/SC	*	1					2340-407309
24	9210-440-040-10	SEAL,OIL/14248	*	1					2104-400401
25	9210-343-600-70	SPACER/HST	*	1					2103-436007
26	9210-442-910-30	O-RING/G55	*	1					2104-429103
27	9210-345-240-10	SPACER/HST	*	1					2103-452401
28	9210-443-350-00	O RING/G45	*	1					2104-433500
29	9015-708-040-00	BOLT,FLANGE/8	*	2					0157-080400
30	9015-708-110-00	BOLT,FLANGE/8	*	2					0157-081100

Numerical Index

SI01-097-160-00

Part Code	Fig. Key	Part Code	Fig. Key	Part Code	Fig. Key
9015-406-010-00	4 33	9210-441-230-90	2 5	9231-047-032-20	3 10
9015-706-015-00	2 27	9210-442-910-30	4 26	9233-034-801-40	2 3
	4 8	9210-443-350-00	4 28	9233-035-220-20	2 18
9015-708-020-00	3 12	9210-443-360-90	4 1	9234-040-730-90	4 23
9015-708-035-00	2 25	9210-540-010-30	1 13	9234-043-531-50	4 15
9015-708-040-00	4 29	9210-540-672-10	1 2	9234-043-540-30	4 16
9015-708-070-00	1 10	9210-541-470-80	1 14	9243-560-730-20	4 34
9015-708-100-00	1 11	9210-541-850-80	4 12		
9015-708-110-00	4 30	9211-183-104-90	1 3		
9017-708-030-20	1 12	9211-183-540-90	1 4		
9045-208-016-00	3 7	9211-240-400-20	2 26		
9046-003-032-00	4 18	9211-261-260-70	4 6		
9046-005-028-00	3 8	9211-261-350-50	2 24		
9046-005-032-00	4 17	9212-040-188-00	3 2		
9050-160-040-00	2 4	9212-041-321-60	4 9		
	4 5	9212-041-331-50	2 14		
9050-160-044-00	4 3	9212-041-430-10	3 3		
9050-160-050-00	3 13	9212-240-430-60	2 21		
9050-162-020-00	2 1	9212-240-630-00	2 22		
9050-162-030-00	2 6	9212-240-750-50	2 9		
9050-162-040-00	2 28	9212-242-221-00	2 11		
9050-162-050-00	3 18	9212-243-180-90	2 12		
9053-120-241-70	2 17	9212-246-510-30	2 2		
9060-001-400-00	4 32	9212-940-572-40	3 6		
9060-001-500-00	4 10	9213-140-500-40	3 4		
9060-002-000-00	2 15	9213-240-450-10	2 20		
9061-004-200-00	4 2	9213-344-811-50	4 4		
9065-005-016-00	4 14	9213-350-230-90	2 19		
9210-140-980-30	3 14	9213-350-561-80	3 17		
9210-140-990-20	3 19	9213-350-571-70	3 16		
9210-143-250-60	1 1	9213-350-600-00	2 8		
	4 22	9213-540-323-70	3 9		
9210-143-690-00	4 11	9213-660-030-30	3 1		
9210-143-730-30	3 5	9214-440-530-50	4 21		
9210-241-480-00	4 19	9215-041-360-20	1 5		
9210-242-791-40	2 16	9215-240-370-60	4 13		
9210-340-170-60	2 13	9215-240-610-30	1 6		
9210-340-370-00	2 10	9215-341-011-40	3 20		
9210-341-210-20	2 23	9215-342-450-00	4 7		
9210-343-480-50	2 7	9215-342-460-90	2 29		
9210-343-600-70	4 25	9215-370-480-40	1 7		
9210-345-240-10	4 27	9215-540-170-90	1 8		
9210-440-010-40	4 20	9215-640-090-90	1 9		
9210-440-040-10	4 24	9215-940-740-00	4 31		
9210-440-880-30	3 15	9231-047-023-40	3 11		

Alphabetical Index

SI01-097-160-00

Description	Fig. Key	Description	Fig. Key	Description	Fig. Key
AIR BLEEING	1 5	GEAR K15	2 21	STOP RING/R/52	3 19
BEARING COVER	2 26	GEAR L48	3 6	STOP RING/S/14	4 32
BEARING, BALL	2 4	GEAR/AB16-22	2 2	STOP RING/S/15	4 10
	4 5	GEAR/F24	2 12	STOP RING/S/20	2 15
BEARING, RB (6004DD)	4 3	GEAR/F30	2 9	STUD/8	1 12
BEARING, RB (6005)	3 13	HOOKE, SPRING	1 9	WASHER/15303	4 19
BEARING, RB (6202)	2 1	HST-10S-5153	4 31	WASHER/20303	2 16
BEARING, RB (6203)	2 6	LEVER/SC	4 23		
BEARING, RB (6204)	2 28	NUT, FLANGE/8	1 1		
BEARING, RB (6205)	3 18		4 22		
BEARING/NEEDLE	2 17	O RING/G45	4 28		
BEVEL PINION	3 2	OIL SEAL/15244	4 20		
BEVEL SHAFT	4 4	OIL SEALS 17326	2 5		
BEVEL SHAFT CASE	4 6	OIL SEALS 20428	4 1		
BOLT, FLANGE/8	4 29	OIL SEALS 25477	3 15		
	4 30	O-RING/G55	4 26		
BOLT/10-12	4 11	PACKING, CASE	3 20		
BRAKE ASSY	4 34	PIN/8X16	3 7		
BRAKE HITCH	2 24	PIN/S/3X32	4 18		
CASE/LH	1 4	PIN/S/5X28	3 8		
CASE/RH	1 3	PIN/S/5X32	4 17		
CLIP/42/H	4 2	PIPE, KNOUCK/8	1 8		
CLUTCH	3 9	PK BEARING COVER	2 29		
COLLAR/172511.5	2 13	PK BEVEL SHAFT CASE	4 7		
COLLAR/172523.5	2 7	PK CASE	1 7		
COLLAR/202515	2 10	PLUG 21	1 2		
COLLAR/20259	2 23	PLUG M8X1.25	1 13		
DIFF. CASE	3 1	REVERSE SPRING	1 6		
DIFF. SHAFT	3 4	SEAL, OIL/14248	4 24		
DIFF. SIDE GEAR	3 3	SHAFT C	2 8		
FLANGE BOLT M8X55L	3 5	SHAFT CASE L COMP	3 11		
FLANGE BOLT/M6X10	4 33	SHAFT CASE R COMP	3 10		
FLANGE BOLT/M6X15	2 27	SHAFT CH COMP	4 16		
	4 8	SHAFT D	2 20		
FLANGE BOLT/M8X100	1 11	SHAFT/A	2 19		
FLANGE BOLT/M8X20	3 12	SHAFT/B COMP	2 3		
FLANGE BOLT/M8X35	2 25	SHIFTER SHAFT COMP	4 15		
FLANGE BOLT/M8X70	1 10	SHIFTER (DIFF)	4 21		
G SHAFT/L	3 17	SPACER/HST	4 25		
G SHAFT/R	3 16		4 27		
GASKET/10	4 12	SPIRAL BEVEL/20R	2 14		
GASKET/8	1 14	SPRIAL BEVEL/20L	4 9		
GEAR CI COMP	2 18	SPRING, HOOK	4 13		
GEAR H16	2 11	STEEL BALL/5/16	4 14		
GEAR J46	2 22	STOP RING/R/47	3 14		