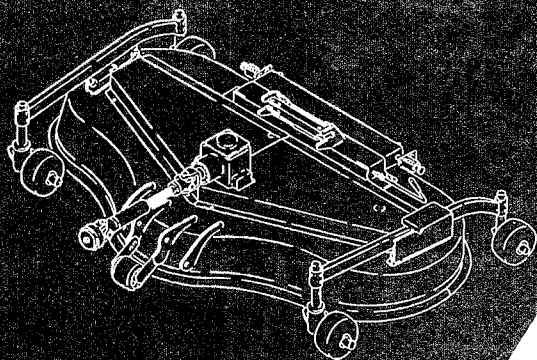


ISEKI

Parts Catalogue



Model

SCM48
SCM54

SCM48-GR19E4

SCM54-GR19E4

Type
of Machine

MOWER

Directions for use of Parts Catalogue

1. Applicable model of machines

All component and option parts used for SCM48/SCM54 mowers are listed in this parts catalogue.

1) MODEL TYPE

GR19..... FOR SGR17/19

2) AREA CODE

E4..... EUROPE AND OCEANIA

2. Explanation for head paragraph

| KEY | PART CODE | DESCRIPTION | SPC | TYPE OF MODEL | | | | | | I T C | C O L | G R P | REMARKS |
|-----|-----------------|-------------|-----|---------------|--------|--------|--------|--------|--------|-------------|-------------|-------------|---------|
| | | | | SSM48M | SSM48F | SSM48G | SRM48M | SRM48F | SRM48G | | | | |
| 1 | 8595-211-001-20 | CASE/UPPER | * | 1 | | | | | | | | | |
| 1A | 8657-201-021-00 | CASE/UPPER | * | 1 | | | 1 | | | | | | |
| 2 | 8595-211-002-10 | CASE/LOWER | * | | | | 1 | | | | | | |
| 3 | V523-100-801-80 | PIN | * | 2 | | | 2 | | | | | | |
| 4 | V211-260-803-00 | BOLT, SEMS | * | 6 | | | 6 | | | | | | |
| | | | * | 2 | | | 1 | | | | | | |
| | | | * | 2 | | | 2 | | | | | | |
| | | | * | 2 | | | 2 | | | | | | |
| | | | * | 2 | | | 1 | | | | | | |

- ① KEY shows the location of parts diagramed in the illustration.
- ② Parts numbers begin with `V` and `W` are standard parts of the market.
- ③ `LH` and `RH` on the parts name are described against the moving direction of the machine or are described on the condition how to install parts on the machines.
- ④ SPC : The following symbol classifies parts to be used for machines.
 - `*` means standard parts.
 - `T` shows that the parts can be installed as optional parts.
 - `R` shows that the parts can be used as applicable parts to replace originally equipped parts.

- ⑤ Upper column : QTY shows the number of parts to be used for one unit of machine.
 `M` is indicated for parts supplied by a meter long.
 `ℓ` is indicated for parts supplied by liter.
 `AR` is indicated for parts need to be adjusted or regulated.
 Lower column : serial number
 —229 means serial number up to 229.
 230— means serial number 230 and after.
- ⑥ ITC : Interchangeability
 `1`...OLD ← NEW
 New parts can be used in place of the old parts.
 `2`...OLD → NEW
 Old parts can be used in place of the new parts.
 `3`...OLD →← NEW
 Old parts and new parts can not be replaced each other.
- ⑦ COL : Color code
 Color is signified with color code number for colored parts.
 Please see the color list shown in the next page.
- ⑧ GRP : Parts shown in this column can be replaced by SET parts.
 Example : Parts marked (A) can be replaced by parts marked (B), and (D) for (C), so the rest follow in the same alphabetical order.
- ⑨ Remarks
 * Other maker's part code number is shown in this column.
 * When Fig. No. is shown in the Remark column of SET parts or ASSY parts, each of their component parts are listed in said Fig. No.

3. Color :

The following colors are used color parts.

| COLOR CODE | COLOR | SPRAY TYPE CODE NUMBER | PAINTS 4K DRUM | PAINTS 16K DRUM |
|------------|--------------|------------------------|-----------------|-----------------|
| 4 G | CRYSTAL BLUE | 1300-957-001-10 | 1300-957-003-00 | 1300-957-004-00 |
| 7 F | MIRROR BLACK | 1300-954-001-10 | 1300-954-003-00 | 1300-954-004-00 |

NOTE : Color code is signified only for the parts assigned by the maker as color parts.

4. Serial Numbers :

For chassis serial number is shown on the LABEL.

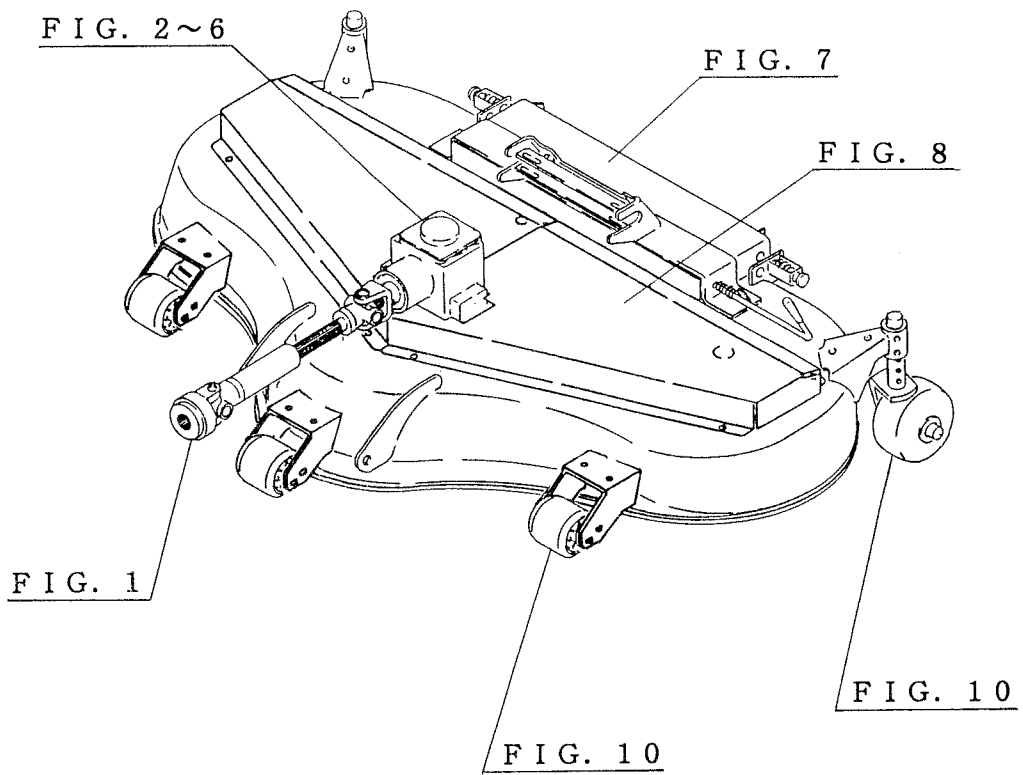
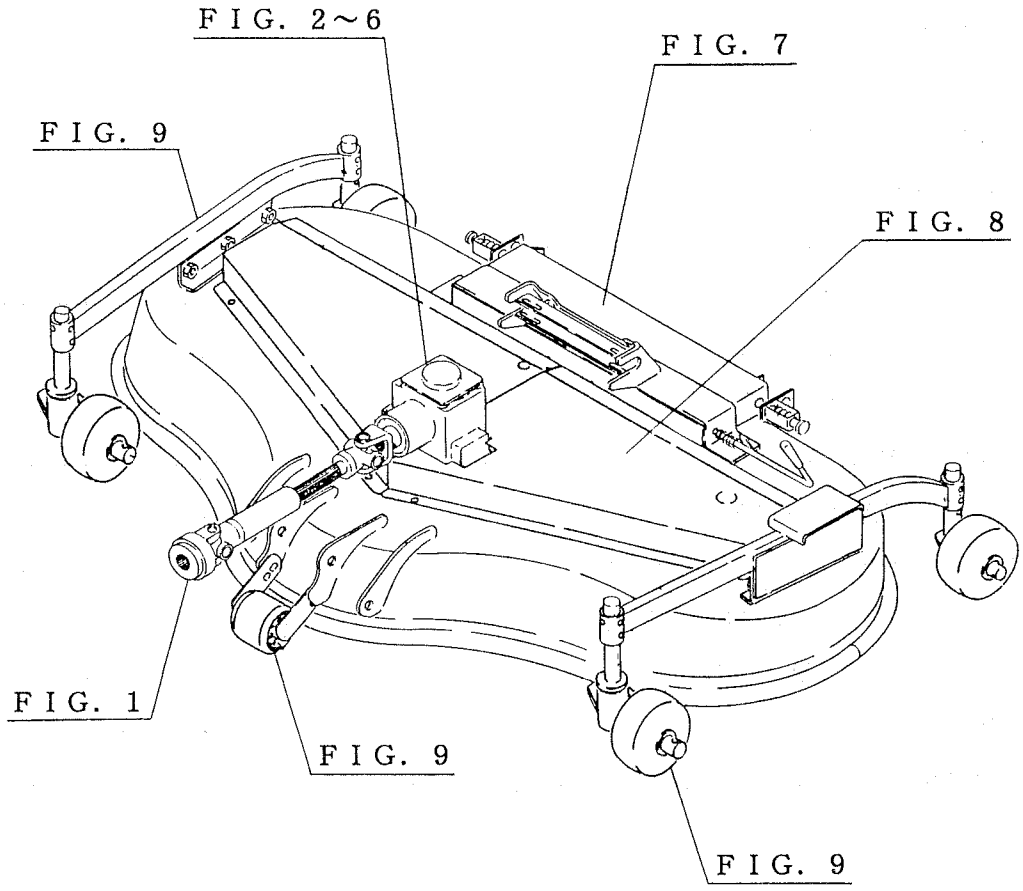
Please see



5. Parts Order

- 1) Parts numbers listed in the parts catalogue are all registered in “ISEKI on-line computer”.
- 2) When you order parts, please make sure of correct numbers.
- 3) When substitute parts is available, the part number ordered will be automatically turned to a new part number.
- 4) Please be sure to use “ISEKI GENUINE PARTS”.

Any other similar parts other than ISEKI parts when used may cause a trouble that makes us unable to repair or guarantee the warrant.

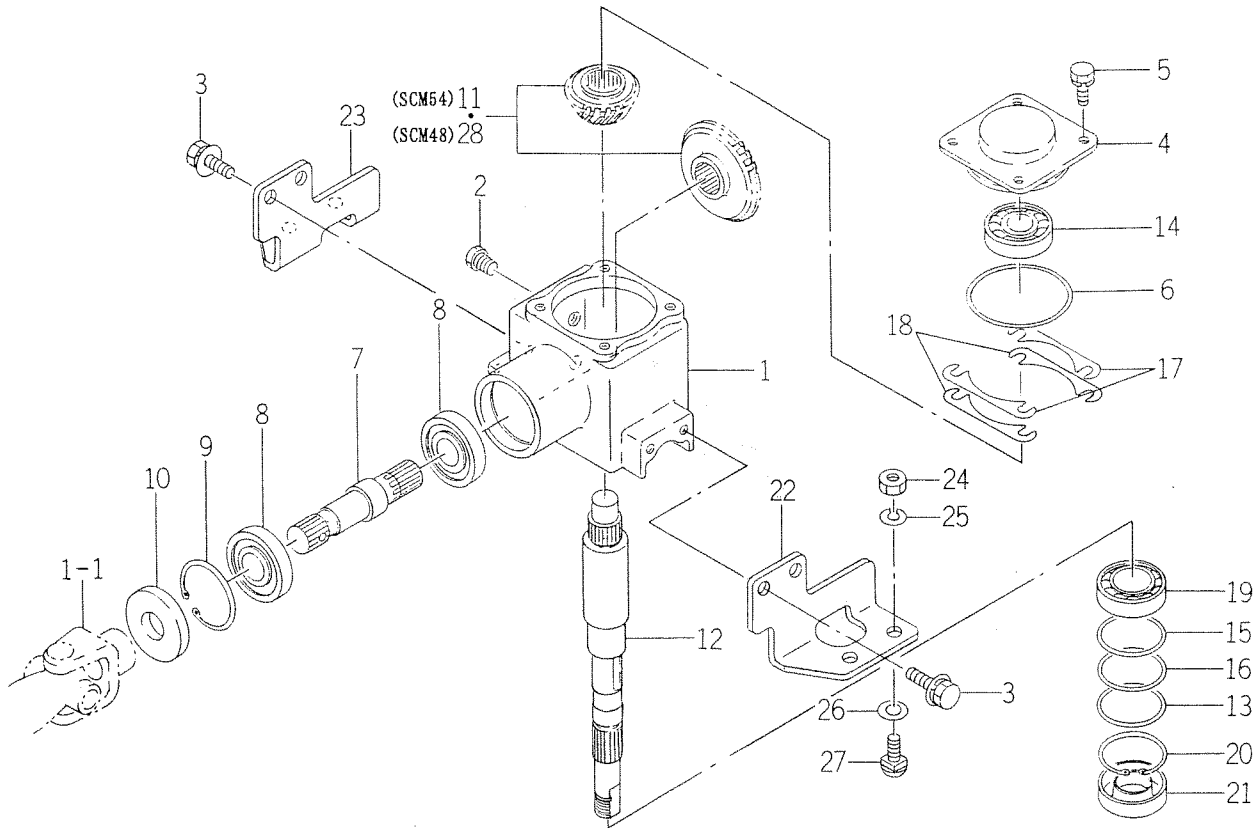


C O N T E N T S

SCM48, 54

| | |
|--------------------------------------|---------|
| UNIVERSAL JOINT SYSTEM..... | Fig. 1 |
| CASE (BEVEL) SYSTEM | Fig. 2 |
| PULLEY SYSTEM | Fig. 3 |
| METAL SYSTEM..... | Fig. 4 |
| CASE (SPUR) SYSTEM..... | Fig. 5 |
| BLADE SYSTEM | Fig. 6 |
| MOWER DECK SYSTEM | Fig. 7 |
| BELT COVER SYSTEM..... | Fig. 8 |
| GAUGE WHEEL SYSTEM (SCM54) | Fig. 9 |
| GAUGE WHEEL SYSTEM (SCM48) | Fig. 10 |
| LINK SYSTEM (M TYPE)..... | Fig. 11 |
| LABEL | Fig. 12 |
| DISCHARGE COVER SYSTEM (OPTION)..... | Fig. 13 |

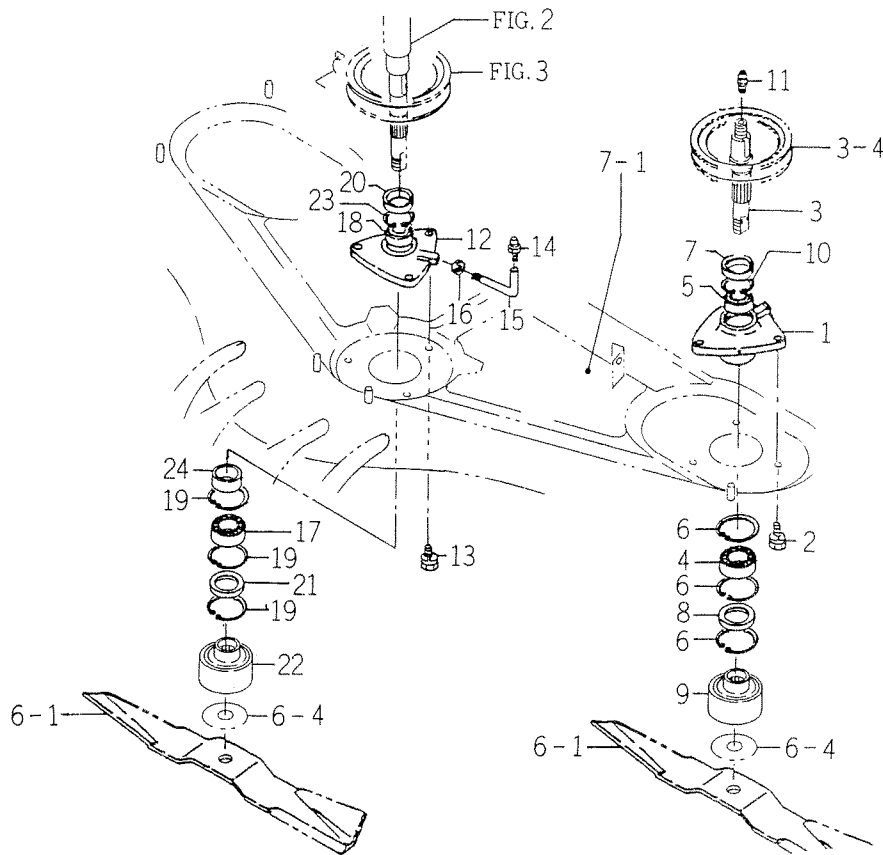
FIG. 2 CASE (BEVEL) SYSTEM



8659-201

| KEY | PART CODE | DESCRIPTION | S P C | TYPE OF MODEL | | I T C | C O L | G R P | REMARKS |
|-----|-----------------|----------------------|-------------|---------------|-------|-------------|-------------|-------------|---------|
| | | | | SCM48 | SCM54 | | | | |
| 1 | 8595-201-011-00 | CASE/BEVEL | * | 1 | 1 | | | | |
| 2 | 7955-201-026-00 | PLUG, DRAIN (1/4) | * | 2 | 2 | | | | |
| 3 | V211-661-002-00 | BOLT/M10X20 | * | 4 | 4 | | | | |
| 4 | 8595-201-012-00 | COVER/CASE | * | 1 | 1 | | | | |
| 5 | V211-260-801-60 | BOLT, SEMS (S) M8X16 | * | 4 | 4 | | | | |
| 6 | V721-103-108-00 | O-RING/G80 | * | 1 | 1 | | | | |
| 7 | 8595-201-013-00 | SHAFT/INPUT | * | 1 | 1 | | | | |
| 8 | 1594-218-001-00 | BEARING/BALL 6305SH2 | * | 2 | 2 | | | | |
| 9 | V707-140-062-00 | RING/SNAP | * | 1 | 1 | | | | |
| 10 | 8595-201-025-00 | SEAL/OIL | * | 1 | 1 | | | | |
| 11 | 8657-201-210-10 | GEAR/BEVEL/25-1 SET | * | | 1 | | | | |
| 12 | 8659-201-001-00 | SHAFT/OUTPUT | * | 1 | 1 | | | | |
| 13 | 8595-201-015-00 | WASHER/45X55X01 | * | 1 | 1 | | | | |
| 14 | V600-110-630-40 | BEARING, RB/6304 | * | 1 | 1 | | | | |
| 15 | 8595-201-016-00 | SHIM/0.1 | * | 1 | 1 | | | | |
| 16 | 8595-201-017-00 | SHIM/0.2 | * | 1 | 1 | | | | |
| 17 | 8595-201-021-00 | SHIM/0.1 | * | 1 | 1 | | | | |
| 18 | 8595-201-022-00 | SHIM/0.2 | * | 1 | 1 | | | | |
| 19 | V600-110-600-60 | BEARING, RB 6006 | * | 1 | 1 | | | | |
| 20 | V707-140-055-00 | RING/SNAP | * | 1 | 1 | | | | |
| 21 | V744-130-551-20 | SEAL, OIL/TC305512 | * | 1 | 1 | | | | |
| 22 | 8659-201-002-00 | BRACKET/CASE/LH | * | 1 | 1 | | | | |
| 23 | 8659-201-003-00 | BRACKET/CASE/RH | * | 1 | 1 | | | | |
| 24 | V304-260-010-00 | NUT | * | 4 | 4 | | | | |
| 25 | V401-160-010-00 | WASHER, SP/M10 | * | 4 | 4 | | | | |
| 26 | V411-260-014-00 | WASHER, PL/M14 | * | 4 | 4 | | | | |
| 27 | 8597-301-002-00 | BLOT/M10X25 | * | 4 | 4 | | | | |
| 28 | 8595-201-250-10 | GEAR/BEVEL/25-1 SET | * | 1 | | | | | |

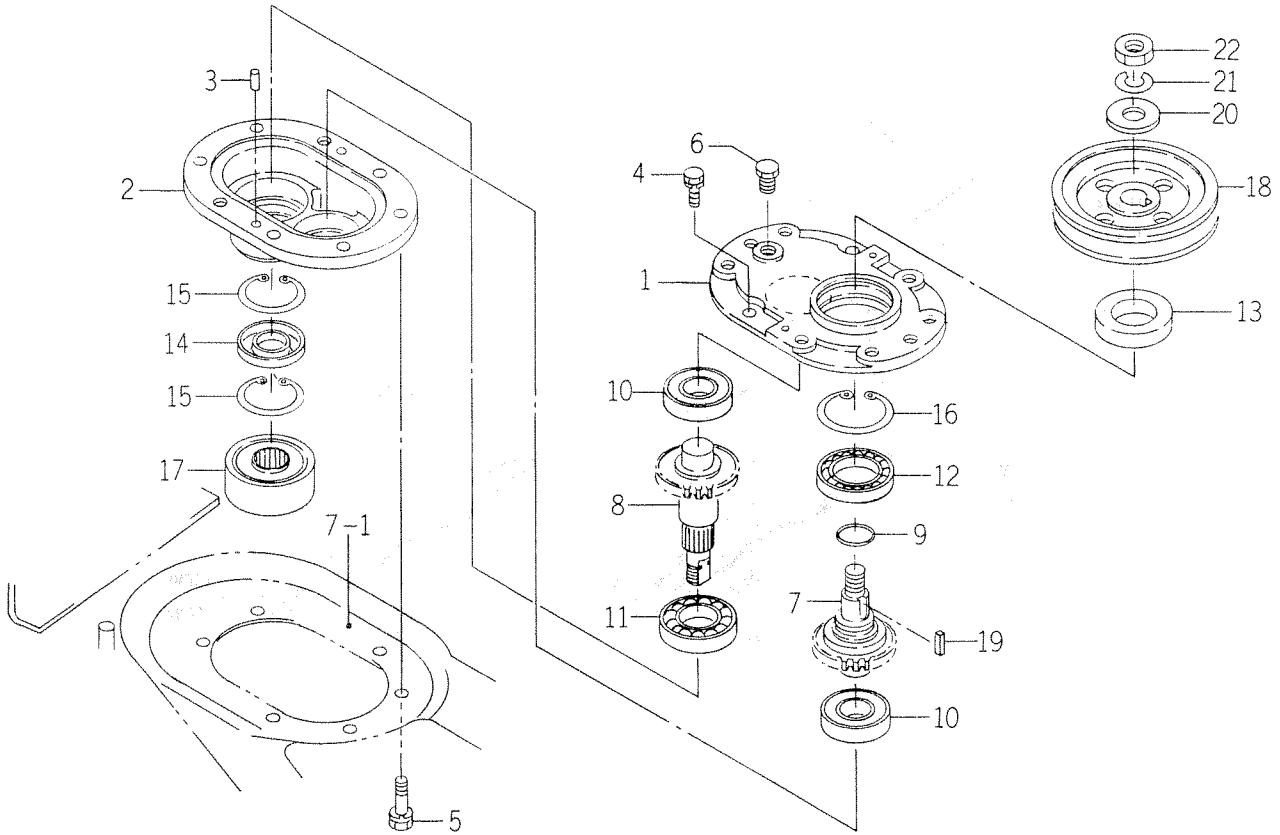
FIG. 4 METAL SYSTEM



8659-301

| KEY | PART CODE | DESCRIPTION | S P C | TYPE OF MODEL | | I T C | C O L | G R P | REMARKS |
|-----|-----------------|----------------------|-------------|---------------|-------|-------------|-------------|-------------|---------|
| | | | | SCM48 | SCM54 | | | | |
| 1 | 8657-301-004-00 | METAL/SIDE | * | 1 | 1 | | | | |
| 2 | V211-261-002-50 | BOLT(S) M10X25 | * | 3 | 3 | | | | |
| 3 | 8659-301-003-00 | SHAFT/SIDE | * | 1 | 1 | | | | |
| 4 | 1594-221-001-00 | BEARING/BALL 6205SH2 | * | 1 | 1 | | | | |
| 5 | V600-110-690-80 | BEARING | * | 1 | 1 | | | | |
| 6 | V705-140-052-00 | RING, SNAP/52 C | * | 3 | 3 | | | | |
| 7 | 8654-301-004-00 | SEAL/OIL | * | 1 | 1 | | | | |
| 8 | V744-135-520-80 | SEAL, OIL/TC35528 | * | 1 | 1 | | | | |
| 9 | 8659-301-001-00 | COLLAR/BLADE | * | 1 | 1 | | | | |
| 10 | V707-140-062-00 | RING/SNAP | * | 1 | 1 | | | | |
| 11 | V760-150-000-00 | NIPPLE, GREASE | * | 1 | 1 | | | | |
| 12 | 8657-301-005-00 | METAL/CENTER | * | 1 | 1 | | | | |
| 13 | V211-261-002-50 | BOLT(S) M10X25 | * | 3 | 3 | | | | |
| 14 | V760-150-000-00 | NIPPLE, GREASE | * | 1 | 1 | | | | |
| 15 | 8657-301-009-00 | PIPE/GREASE | * | 1 | 1 | | | | |
| 16 | V304-260-010-00 | NUT | * | 1 | 1 | | | | |
| 17 | 1594-221-001-00 | BEARING/BALL 6205SH2 | * | 1 | 1 | | | | |
| 18 | V600-110-690-80 | BEARING | * | 1 | 1 | | | | |
| 19 | V705-140-052-00 | RING, SNAP/52 C | * | 3 | 3 | | | | |
| 20 | 8654-301-004-00 | SEAL/OIL | * | 1 | 1 | | | | |
| 21 | V744-135-520-80 | SEAL, OIL/TC35528 | * | 1 | 1 | | | | |
| 22 | 8659-301-001-00 | COLLAR/BLADE | * | 1 | 1 | | | | |
| 23 | V707-140-062-00 | RING/SNAP | * | 1 | 1 | | | | |
| 24 | 8657-301-008-00 | COLLER/26X34X15 | * | 1 | 1 | | | | |

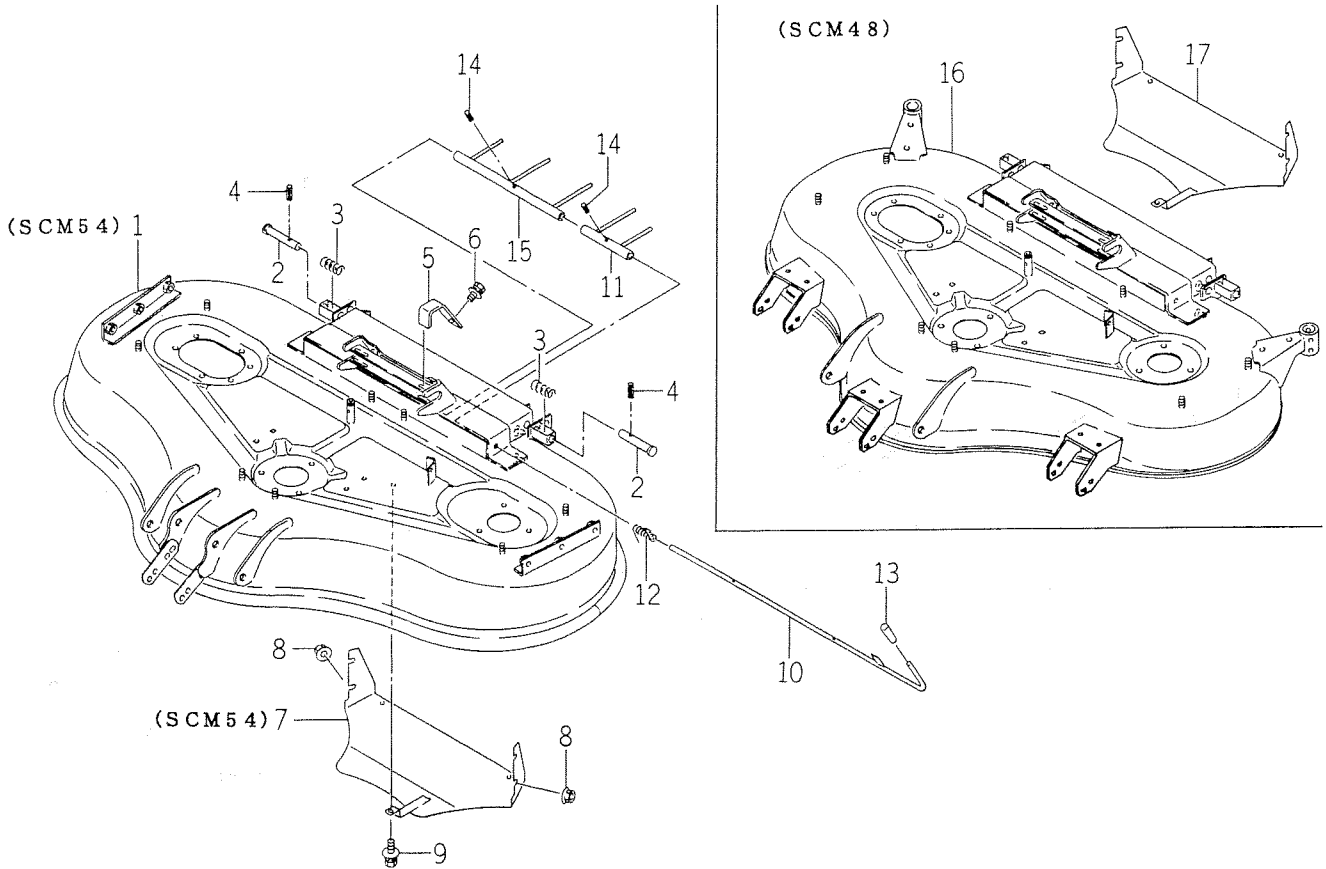
FIG. 5 CASE (SPUR) SYSTEM



8659-303

| KEY | PART CODE | DESCRIPTION | S P C | TYPE OF MODEL | | I T C | C O L | G R P | REMARKS |
|-----|-----------------|----------------------|-------------|---------------|-------|-------------|-------------|-------------|---------|
| | | | | SCM48 | SCM54 | | | | |
| 1 | 8659-303-001-00 | CASE/UPPER | * | 1 | 1 | | | | |
| 2 | 8659-303-002-00 | CASE/LOWER | * | 1 | 1 | | | | |
| 3 | 8658-306-003-00 | PIN/PARALLEL | * | 2 | 2 | | | | |
| 4 | V211-260-801-60 | BOLT, SEMS (S) M8X16 | * | 2 | 2 | | | | |
| 5 | V211-261-003-00 | BOLT(S) M10X30 | * | 6 | 6 | | | | |
| 6 | 7955-201-026-00 | PLUG, DRAIN (1/4) | * | 1 | 1 | | | | |
| 7 | 8659-303-003-00 | GEAR/SPUR/23 | * | 1 | 1 | | | | |
| 8 | 8659-303-004-00 | GEAR/SPUR/25 | * | 1 | 1 | | | | |
| 9 | V721-103-102-50 | O-RING/G25 | * | 1 | 1 | | | | |
| 10 | 1594-221-001-00 | BEARING/BALL 6205SH2 | * | 2 | 2 | | | | |
| 11 | V600-110-620-60 | BEARING, RB/6206 | * | 1 | 1 | | | | |
| 12 | V600-110-690-80 | BEARING | * | 1 | 1 | | | | |
| 13 | V744-140-621-10 | SEAL, OIL/TC406211 | * | 1 | 1 | | | | |
| 14 | V744-130-520-80 | SEAL, OIL/TC30528 | * | 1 | 1 | | | | |
| 15 | V705-140-052-00 | RING, SNAP/52 C | * | 2 | 2 | | | | |
| 16 | V707-140-062-00 | RING/SNAP | * | 1 | 1 | | | | |
| 17 | 8659-303-006-00 | COLLAR/BLADE | * | 1 | 1 | | | | |
| 18 | 8659-303-007-00 | PULLEY/VB125 | * | 1 | 1 | | | | |
| 19 | 3750-121-011-00 | KEY | * | 1 | 1 | | | | |
| 20 | 3746-111-011-00 | WASHER, BRAKE DRUM | * | 1 | 1 | | | | |
| 21 | V401-160-016-00 | WASHER, SP/M16 | * | 1 | 1 | | | | |
| 22 | V304-460-016-00 | NUT/M16 | * | 1 | 1 | | | | |

FIG. 7 MOWER DECK SYSTEM



8659-402

| KEY | PART CODE | DESCRIPTION | S P C | TYPE OF MODEL | | I T C | C O L | G R P | REMARKS |
|-----|-----------------|----------------------|-------------|---------------|-------|-------------|-------------|-------------|---------|
| | | | | SCM48 | SCM54 | | | | |
| 1 | 8659-402-210-10 | DECK/MOWER/54/G COMP | * | | 1 | | 7F | | |
| 2 | 8595-608-082-00 | PIN/16X96 | * | 2 | 2 | | | | |
| 3 | 1560-601-028-00 | SPRING/HC042 | * | 2 | 2 | | | | |
| 4 | V580-140-504-00 | PIN, SPRING/5 X40 W | * | 2 | 2 | | | | |
| 5 | 8659-402-002-00 | PLATE/LOCK | * | 2 | 2 | | | | |
| 6 | V211-360-802-50 | BOLT, SEMS | * | 2 | 2 | | | | |
| 7 | 8659-402-310-00 | PLATE/UNDER COMP | * | | 1 | | 7F | | |
| 8 | V362-260-008-00 | NUT/WASHER | * | 4 | 4 | | | | |
| 9 | V211-360-802-00 | BOLT (SP) M8X20 | * | 1 | 1 | | | | |
| 10 | 8659-402-270-10 | LEVER COMP | * | 1 | 1 | | | | |
| 11 | 8659-402-280-10 | FORK/LH COMP | * | 1 | 1 | | | | |
| 12 | 8659-402-003-00 | SPRING/HT016 | * | 1 | 1 | | | | |
| 13 | 2101-230-001-00 | KNOB | * | 1 | 1 | | | | |
| 14 | V580-140-401-80 | PIN/SPRING | * | 2 | 2 | | | | |
| 15 | 8659-402-290-00 | FORK/RH COMP | * | 1 | 1 | | | | |
| 16 | 8661-402-210-10 | DECK/MOWER/48/G COMP | * | 1 | | | 7F | | |
| 17 | 8661-402-310-00 | PLATE/UNDER COMP | * | 1 | | | 7F | | |
| | 8661-402-330-00 | UNDER PLATE BIG | | | | | | | |

NUMERICAL INDEX

8659-097-100-00

| PART CODE | FIG. KEY | PART CODE | FIG. KEY | PART CODE | FIG. KEY |
|-----------------|----------|-----------------|----------|-----------------|----------|
| V211-260-801-60 | 2 5 | V705-140-052-00 | 5 15 | 8595-201-011-00 | 2 1 |
| | 5 4 | V707-140-055-00 | 2 20 | 8595-201-012-00 | 2 4 |
| V211-261-002-50 | 4 2 | V707-140-062-00 | 2 9 | 8595-201-013-00 | 2 7 |
| | 4 13 | | 4 10 | 8595-201-015-00 | 2 13 |
| | 9 3 | | 4 23 | 8595-201-016-00 | 2 15 |
| V211-261-003-00 | 5 5 | | 5 16 | 8595-201-017-00 | 2 16 |
| V211-360-802-00 | 7 9 | V721-103-102-50 | 5 9 | 8595-201-021-00 | 2 17 |
| V211-360-802-50 | 7 6 | V721-103-108-00 | 2 6 | 8595-201-022-00 | 2 18 |
| V211-661-002-00 | 2 3 | V744-130-520-80 | 5 14 | 8595-201-025-00 | 2 10 |
| V304-260-008-00 | 3 18 | V744-130-551-20 | 2 21 | 8595-201-250-10 | 2 28 |
| V304-260-010-00 | 13 4 | V744-135-520-80 | 4 8 | 8595-306-005-00 | 6 3 |
| | 2 24 | | 4 21 | 8595-306-006-00 | 6 4 |
| | 4 16 | V744-140-621-10 | 5 13 | 8595-306-007-00 | 6 5 |
| V304-460-016-00 | 3 8 | V760-150-000-00 | 3 15 | 8595-501-001-10 | 9 18 |
| | 5 22 | | 4 11 | | 10 10 |
| V334-260-020-00 | 11 4 | | 4 14 | 8595-501-006-00 | 9 19 |
| V360-260-012-00 | 10 12 | | 9 8 | 8595-505-002-00 | 9 11 |
| V362-260-008-00 | 7 8 | | 9 17 | | 10 3 |
| | 8 5 | | 10 9 | 8595-505-051-30 | 10 11 |
| | 9 20 | 1427-317-003-00 | 9 12 | 8595-608-082-00 | 7 2 |
| V401-160-008-00 | 8 7 | | 10 4 | | 11 5 |
| V401-160-010-00 | 2 25 | 1434-211-004-00 | 3 3 | 8595-901-005-00 | 12 7 |
| V401-160-016-00 | 3 7 | 1444-507-003-00 | 13 3 | 8595-901-006-00 | 12 3 |
| | 5 21 | 1560-601-028-00 | 7 3 | 8595-901-007-00 | 12 4 |
| V401-160-020-00 | 6 6 | | 11 6 | 8595-903-081-00 | 12 8 |
| V411-260-014-00 | 2 26 | 1564-275-007-00 | 9 7 | 8597-202-501-00 | 3 10 |
| V411-260-022-00 | 9 16 | 1593-901-015-00 | 12 9 | 8597-301-002-00 | 2 27 |
| | 10 8 | 1594-218-001-00 | 2 8 | 8654-101-212-00 | 1 3 |
| V580-140-401-80 | 7 14 | 1594-221-001-00 | 4 4 | 8654-101-221-00 | 1 8 |
| V580-140-504-00 | 7 4 | | 4 17 | 8654-101-230-00 | 1 4 |
| | 9 6 | | 5 10 | 8654-101-232-00 | 1 5 |
| | 9 15 | 2101-230-001-00 | 7 13 | | 1 10 |
| | 10 7 | 2149-602-012-00 | 8 2 | 8654-101-233-00 | 1 6 |
| | 11 7 | | 8 4 | | 1 11 |
| V580-140-804-00 | 1 12 | 2500-901-014-30 | 12 5 | 8654-202-016-00 | 3 2 |
| V600-110-600-60 | 2 19 | 2500-901-027-00 | 12 1 | | 3 5 |
| V600-110-620-60 | 5 11 | 3621-211-003-00 | 3 14 | 8654-301-004-00 | 4 7 |
| V600-110-630-40 | 2 14 | 3737-341-006-00 | 3 16 | | 4 20 |
| V600-110-690-80 | 4 5 | 3737-341-007-00 | 3 17 | 8654-501-283-00 | 9 14 |
| | 4 18 | 3746-111-011-00 | 3 6 | | 10 6 |
| V704-140-016-00 | 5 12 | | 5 20 | 8654-901-001-00 | 12 2 |
| V704-140-017-00 | 3 13 | 3750-121-011-00 | 5 19 | 8654-901-002-00 | 12 6 |
| V705-140-052-00 | 4 6 | 7955-201-026-00 | 2 2 | 8657-101-501-00 | 1 2 |
| | 4 19 | 8593-014-200-10 | 3 11 | 8657-201-210-10 | 2 11 |
| | | | | 8657-202-003-00 | 3 1 |

8659-097-100-00

| PART CODE | FIG. KEY | PART CODE | FIG. KEY | PART CODE | FIG. KEY |
|-----------------|----------|-----------------|----------|-----------|----------|
| 8657-202-003-00 | 3 4 | 8659-608-220-10 | 11 2 | | |
| 8657-301-004-00 | 4 1 | 8659-608-230-10 | 11 3 | | |
| 8657-301-005-00 | 4 12 | 8661-203-001-00 | 3 20 | | |
| 8657-301-008-00 | 4 24 | 8661-306-001-00 | 6 7 | | |
| 8657-301-009-00 | 4 15 | 8661-306-002-00 | 6 8 | | |
| 8657-501-500-00 | 9 4 | 8661-402-210-10 | 7 16 | | |
| 8657-501-501-00 | 9 5 | 8661-402-310-00 | 7 17 | | |
| 8657-501-520-10 | 9 9 | 8661-406-001-00 | 13 2 | | |
| 8657-501-530-00 | 9 13 | 8661-406-200-00 | 13 1 | | |
| | 10 5 | 8661-407-001-00 | 8 8 | | |
| 8657-501-540-00 | 9 10 | 8661-501-210-00 | 10 1 | | |
| 8658-202-200-00 | 3 9 | 8661-501-220-00 | 10 2 | | |
| 8658-306-003-00 | 5 3 | | | | |
| 8659-101-210-00 | 1 1 | | | | |
| 8659-101-230-00 | 1 9 | | | | |
| 8659-101-231-00 | 1 7 | | | | |
| 8659-201-001-00 | 2 12 | | | | |
| 8659-201-002-00 | 2 22 | | | | |
| 8659-201-003-00 | 2 23 | | | | |
| 8659-203-001-00 | 3 19 | | | | |
| 8659-301-001-00 | 4 9 | | | | |
| | 4 22 | | | | |
| 8659-301-003-00 | 4 3 | | | | |
| 8659-303-001-00 | 5 1 | | | | |
| 8659-303-002-00 | 5 2 | | | | |
| 8659-303-003-00 | 5 7 | | | | |
| 8659-303-004-00 | 5 8 | | | | |
| 8659-303-006-00 | 5 17 | | | | |
| 8659-303-007-00 | 5 18 | | | | |
| 8659-306-001-10 | 6 1 | | | | |
| 8659-306-002-10 | 6 2 | | | | |
| 8659-402-002-00 | 7 5 | | | | |
| 8659-402-003-00 | 7 12 | | | | |
| 8659-402-210-10 | 7 1 | | | | |
| 8659-402-270-10 | 7 10 | | | | |
| 8659-402-280-10 | 7 11 | | | | |
| 8659-402-290-00 | 7 15 | | | | |
| 8659-402-310-00 | 7 7 | | | | |
| 8659-407-001-00 | 8 1 | | | | |
| 8659-407-002-00 | 8 3 | | | | |
| 8659-407-003-00 | 8 6 | | | | |
| 8659-501-210-00 | 9 1 | | | | |
| 8659-501-220-00 | 9 2 | | | | |
| 8659-608-001-00 | 11 8 | | | | |
| 8659-608-210-10 | 11 1 | | | | |

| DESCRIPTION | REF. NO | DESCRIPTION | REF. NO | DESCRIPTION | REF. NO | DESCRIPTION | REF. NO | DESCRIPTION | REF. NO |
|----------------------|---------|-----------------------|---------|----------------|---------|-----------------------|---------|-------------|---------|
| ARM/GAUGE/LH | 9 | COLLER/26X34X15 | 4 | NIPPLE, GREASE | 10 | RING, SNAP/17 C | 3 | | 12 |
| ARM/GAUGE/RH | 2 | COVER/BELT/LH | 8 | NUT | 2 | RING, SNAP/52 C | 4 | | 6 |
| ARM/TENSION | 3 | COVER/BELT/RH | 8 | | 4 | | 4 | | 19 |
| ASYOKE | 1 | COVER/CASE | 2 | | 11 | | 5 | | 15 |
| BEARING | 4 | COVER/DISCHARGE SET | 13 | NUT/M 8 | 13 | ROD/LIFT COMP | 11 | | 3 |
| | 4 | CRIP/LEVER | 13 | NUT/M16 | 3 | ROD, CHAIN TENSION | 3 | | 17 |
| BEARING/BALL 6205SH2 | 5 | DECK/MOWER/48/G COMP | 7 | | 5 | SEAL/OIL | 2 | | 10 |
| | 4 | DECK/MOWER/54/G COMP | 7 | | 22 | | 4 | | 7 |
| | 4 | FITTING YOKE | 1 | NUT/M20X1.5 | 6 | SEAL, OIL/TC30528 | 4 | | 20 |
| BEARING/BALL 6305SH2 | 5 | FORK/LH | 7 | NUT/M8X50 | 8 | SEAL, OIL/TC305512 | 5 | | 14 |
| BEARING, RB 6006 | 2 | FORK/RH | 7 | NUT/WASHER | 8 | SEAL, OIL/TC35528 | 2 | | 21 |
| BEARING, RB/6206 | 5 | FORK/WHEEL | 9 | | 8 | | 4 | | 8 |
| BEARING, RB/6304 | 2 | FORK/WHEEL/LH | 10 | | 9 | | 4 | | 21 |
| BELT/VB088 | 3 | FORK/WHEEL/R | 9 | 0-RING/G25 | 10 | SEAL, OIL/TC406211 | 5 | | 13 |
| BELT/VB096 | 3 | FORK/WHEEL/RH | 10 | 0-RING/G80 | 5 | SHAFT/INPUT | 2 | | 7 |
| BLADE/60X432/A | 6 | GEAR/BEVEL/25-1 SET | 2 | PIN/GAUGE COMP | 2 | SHAFT/OUTPUT | 2 | | 12 |
| BLADE/60X432/B | 6 | GEAR/SPUR/23 | 5 | PIN/PARALLEL | 9 | SHAFT/SIDE | 4 | | 3 |
| BLADE/60X480/A | 6 | GEAR/SPUR/25 | 5 | PIN/SPRING | 7 | SHAFT YOKE | 1 | | 7 |
| BLADE/60X480/B | 6 | GREASE NIPPLE | 1 | PIN/08X44 | 9 | SHIM/0.1 | 2 | | 15 |
| BL0T/M10X25 | 4 | JOINT/B | 1 | | 10 | SHIM/0.2 | 2 | | 16 |
| BOLT(S) M10X25 | 4 | JOINT/UNIVERSAL SET | 1 | | 10 | | 2 | | 18 |
| | 4 | JOINT/UNIVERSAL SET | 1 | | 9 | SHIM/1.2 | 6 | | 4 |
| | 9 | JOURNALCROSSE ASSY | 1 | | 11 | SLEEVE YOKE ASSY | 1 | | 3 |
| BOLT(S) M10X30 | 5 | KEY | 5 | PIN/16X88 | 7 | SPRING/H042 | 7 | | 3 |
| BOLT(S) M8X20 | 7 | KEY | 5 | PIN/16X96 | 7 | | 2 | | 6 |
| BOLT/M10X20 | 2 | KEY/06X06X28 | 3 | | 11 | | 11 | | 6 |
| BOLT/M8X113 | 13 | KNOB | 7 | | 7 | SPRING/HT016 | 7 | | 12 |
| BOLT, SEMS | 7 | LABEL/CE | 12 | | 9 | SPRING, CHAIN TENSION | 3 | | 16 |
| BOLT, SEMS (S) M8X16 | 2 | LABEL/DANGER | 12 | | 9 | SURCLIP/HOLE | 1 | | 6 |
| | 5 | LABEL/DANGER | 12 | | 10 | | 1 | | 11 |
| BRACKET/CASE/LH | 2 | LABEL/WARNING/DISCHAR | 12 | | 11 | WASHER | 3 | | 14 |
| BRACKET/CASE/RH | 2 | LABEL/GAUGE WHEEL | 12 | | 11 | WASHER/20X60X06 | 6 | | 3 |
| BUSH/16X18X15 | 3 | LABEL/MAINTENANCE | 12 | | 1 | WASHER/27X40X2 | 9 | | 7 |
| BUSH/22X25X25 | 9 | LABEL/NOISE/LWA/105 | 12 | | 4 | WASHER/45X55X01 | 2 | | 13 |
| | 10 | LABEL/PTO | 12 | | 7 | WASHER, BRAKE DRUM | 3 | | 6 |
| BUSH/26X30X20 | 9 | LABEL/WARNING/BELT | 12 | | 7 | | 5 | | 20 |
| CAP/32 | 8 | LABEL/WARNING/HOT | 12 | | 2 | WASHER, PL/M14 | 2 | | 26 |
| | 8 | LEVER | 7 | | 5 | WASHER, PL/M22 | 9 | | 16 |
| CASE/BEVEL | 2 | LINK/A/LH | 11 | | 3 | | 10 | | 8 |
| CASE/LOWER | 5 | LINK/A/RH | 11 | | 5 | WASHER, SP/M 8 | 8 | | 7 |
| CASE/UPPER | 5 | METAL/CENTER | 4 | | 3 | WASHER, SP/M10 | 2 | | 25 |
| CLIP, PIN | 9 | METAL/SIDE | 4 | | 3 | WASHER, SP/M16 | 3 | | 7 |
| | 10 | NIPPLE, GREASE | 3 | | 2 | | 5 | | 21 |
| COLLAR/BLADE | 4 | | 4 | | 2 | WASHER, SP/M20 | 6 | | 6 |
| | 4 | | 4 | | 4 | WHEEL/GAUGE ASSY | 9 | | 13 |
| | 4 | | 4 | | 4 | | 10 | | 5 |
| | 5 | | 9 | | 5 | | 9 | | 18 |
| COLLAR/26X36X3 | 3 | | 9 | | 3 | WHEEL/GAUGE/FRONT | 10 | | 10 |

| DESCRIPTION | REF . NO | DESCRIPTION | REF . NO | DESCRIPTION | REF . NO | DESCRIPTION | REF . NO |
|-------------|----------|-------------|----------|-------------|----------|-------------|----------|
| WIRE | 1 13 | | | | | | |
| | | | | | | | |
| | | | | | | | |
| | | | | | | | |
| | | | | | | | |
| | | | | | | | |
| | | | | | | | |
| | | | | | | | |
| | | | | | | | |