

Ta

SF303_333 chassis

RADIATOR SYSTEM	Fig. 1
MUFFLER SYSTEM	Fig. 2
CLEANER (AIR) SYSTEM	Fig. 3
FILTER (FUEL) SYSTEM	Fig. 4
TANK (FUEL) SYSTEM	Fig. 5
BATTERY SYSTEM	Fig. 6
LEVER (ACCELERATOR) SYSTEM	Fig. 7
MAIM CLUTCH SYSTEM	Fig. 8
INPUT GEAR,COUNTER GEAR SYSTEM	Fig. 9
INPUT COUNTER GEAR, SPACER (HST) SYSTEM	Fig. 10
CLUTCH SHAFT SYSTEM	Fig. 11
PEDAL (CLUTCH) SYSTEM	Fig. 12
FRONT TRANSMISSION CASE SYSTEM	Fig. 13
HST SYSTEM	Fig. 14
INPUT GEAR (HST), SUB CHANGE (HST) SYSTEM	Fig. 15
4WD GEAR (PART TIME) SYSTEM (X	Fig. 16
4WD GEAR SYSTEM (EXCEPT X TYPE	Fig. 17
INPUT CASE (PART TIME) SYSTEM	Fig. 18
4WD CHANGE (PART TIME) SYSTEM	Fig. 19
4WD CHANGE SYSTEM (EXCEPT X TY	Fig. 20
REAR TRANSMISSION CASE SYSTEM	Fig. 21
PTO COUNTER GEAR,PTO SHAFT SYS	Fig. 22
PTO CHANGE SYSTEM	Fig. 23
CHANGE LEVER (SUB) SYSTEM	Fig. 24
CHANGE LEVER (PTO) SYSTEM	Fig. 25
	Fig. 26
	Fig. 27

LINK (HST) SYSTEM	Fig. 28
PEDAL (HST) SYSTEM	Fig. 29
PIPING (HST) SYSTEM	Fig. 30
DRIVE PINION (HST),CASE (DIFF)	Fig. 31
REAR AXLE HOUSING SYSTEM	Fig. 32
WHEEL SHAFT SYSTEM	Fig. 33
DIFF LOCK,PEDAL (DIFF LOCK) SY	Fig. 34
BRAKE SYSTEM	Fig. 35
PEDAL (BRAKE) SYSTEM	Fig. 36
BRAKE PEDAL,LEVER (PARKING) SY	Fig. 37
FRONT WHEEL SYSTEM (OPTION)	Fig. 38
WHEEL (STEERING),	Fig. 39
LEVER (TILT) SYSTEM	Fig. 40
STEERING (UNIT) SYSTEM	Fig. 41
BRACKET (AXLE) SYSTEM	Fig. 42
DRIVE SHAFT (4WD) SYSTEM	Fig. 43
BEVEL CASE SYSTEM	Fig. 44
AXLE HOUSING SYSTEM	Fig. 45
FINAL GEAR CASE,	Fig. 46
TIE ROD SYSTEM	Fig. 47
REAR WHEEL (4WD) SYSTEM (OPTIO	Fig. 48
LIFT LINK SYSTEM	Fig. 49
CONTROL VALVE SYSTEM	Fig. 50
CONTROL LEVER (MOWER LIFT) SYS	Fig. 51
PIPING (MAIN) SYSTEM	Fig. 52
HEAD LAMP,HOOD LOCK SYSTEM	Fig. 53
STEERING COVER SYSTEM	Fig. 54
SEAT FRAME,STEP FRAME SYSTEM	Fig. 55
STEP,FENDER SYSTEM	Fig. 56
FRONT BUMPER SYSTEM	Fig. 57
PANEL (CONTROL) SYSTEM	Fig. 58
PANEL (FENDER) SYSTEM	Fig. 59
HARNESS SYSTEM	Fig. 60

HOOD SYSTEM	Fig. 61
UNDER COVER SYSTEM	Fig. 62
MARK,ORNAMENT	Fig. 63
LABEL (CAUTION)	Fig. 64
REAR WEIGHT SET	Fig. 65
HYDRAULIC UNIT (OUT SIDE) SET	Fig. 66
ROPS,SEAT SYSTEM (OPTION)	Fig. 67
COMPONENT PARTS	Fig. 68
COMPONENT PARTS	Fig. 69
COMPONENT PARTS	Fig. 70
COMPONENT PARTS	Fig. 71
COMPONENT PARTS	Fig. 72

CHASSIS MODEL	ENGINE MODEL	Parts Catalogue No.
SF303	E3CEG	6005-097-440-0A
SF333	E3CDG	6005-097-450-0A

Directions for use of Parts Catalogue

1. Applicable model of machines

All component and option parts used for SF303/SF333 tractors are listed in this parts catalogue.

- NOTES: U..... Power steering.
 W..... 2WD/4WD manual shift.
 X..... 2WD/4WD automatic shift – permanent 4WD.
 E4..... For EUROPE.
 M..... Illustrated labels.
 SF303..... E3CE-G (ENGINE)
 SF333..... E3CD-G (ENGINE)

2. Explanation for head paragraph

KEY	PART CODE	DESCRIPTION	S P C	TYPE OF MODEL						I T C	C O L	G R P	REMARKS
				SSM48M	SSM48F	SSM48G	SRM48M	SRM48F	SRM48G				
1	4595-211-001-20	CASE/UPPER	*										
1A	4657-201-001-00	CASE/UPPER	*				1						
2	4595-211-002-10	CASE/LOWER	*				1						
3	V523-100-001-00	PIN	*				2						
4	V211-200-002-00	BOLT, SCWS	*				1						

- ① KEY shows the location of parts diagramed in the illustration.
- ② Parts numbers begin with `V` and `W` are standard parts of the market.
- ③ `LH` and `RH` on the parts name are described against the moving direction of the machine or are described on the condition how to install parts on the machines.
- ④ SPC : The following symbol classifies parts to be used for machines.
 - `*` means standard parts.
 - `T` shows that the parts can be installed as optional parts.
 - `R` shows that the parts can be used as applicable parts to replace originally equipped parts.

2

- ⑤ Upper column : QTY shows the number of parts to be used for one unit of machine.
 `M` is indicated for parts supplied by a meter long.
 `ℓ` is indicated for parts supplied by liter.
 `AR` is indicated for parts need to be adjusted or regulated.
 Lower column : serial number
 ---229 means serial number up to 229.
 230--- means serial number 230 and after.
- ⑥ ITC : Interchangeability
 `1`---OLD ← NEW
 New parts can be used in place of the old parts.
 `2`---OLD → NEW
 Old parts can be used in place of the new parts.
 `3`---OLD →← NEW
 Old parts and new parts can not be replaced each other.
- ⑦ COL : Color code
 Color is signified with color code number for colored parts.
 Please see the color list shown in the next page.
- ⑧ GRP : Parts shown in this column can be replaced by SET parts.
 Example : Parts marked ㉠ can be replaced by parts marked ㉡, and ㉢ for ㉣, so the rest follow in the same alphabetical order.
- ⑨ Remarks
 * Other maker's part code number is shown in this column.
 * When Fig. No. is shown in the Remark column of SET parts or ASSY parts, each of their component parts are listed in said Fig. No.

3. Color :

The following colors are used color parts.

COLOR CODE	COLOR	SPRAY TYPE CODE NUMBER	PAINTS 4K DRUM	PAINTS 16K DRUM
4 L	NEO-BLUE	1300-985-001-10	1300-985-003-00	—————
5 I	SUNSET GRAY	1300-959-001-10	1300-959-003-00	1300-959-004-00
6 G	SUMMER WHITE	1300-958-001-10	1300-958-003-00	1300-958-004-00
7 F	MIRROR BLACK	1300-954-001-10	1300-954-003-00	1300-954-004-00

NOTE : Color code is signified only for the parts assigned by the maker as color parts.

4. Serial Numbers :

- 1) For engines serial number is stamped on CYLINDER BLOCK ASSY.
Please see Fig. No. 5-1.
- 2) For chassies serial number is shown on the LABEL.
Please see



5. Parts Order

- 1) Parts numbers listed in the parts catalogue are all registered in "ISEKI on-line computer".
- 2) When you order parts, please make sure of correct numbers.
- 3) When substitute parts is available, the part number ordered will be automatically turned to a new part number.
- 4) Please be sure to use "ISEKI GENUINE PARTS".
Any other similar parts other than ISEKI parts when used may cause a trouble that makes us unable to repair or guarantee the warrant.

*** Structure Table of Model ***

	S F	S T								
	3 F F F	3 F F F								
	0 H H H	3 H H H								
	3 U U U	3 U U U								
	W X X	W X X								
	E E W	E E W								
	4 4 E	4 4 E								
1	***	***								
2	***	***								
3	***	***								
4	***	***								
5	***	***								
6	***	***								
7	***	***								
8	***	***								
9	***	***								
10	***	***								
11	***	***								
12	***	***								
13	***	***								
14	***	***								
15	***	***								
16	***	***								
17	***	***								
18	**	**								
19	*	*								
20	***	***								
21	**	**								
22	*	*								
23	***	***								
24	***	***								
25	***	***								
26	***	***								
27	***	***								
28	***	***								
29	***	***								
30	***	***								
31	***	***								
32	***	***								
33	***	***								
34	***	***								
35	***	***								
36	***	***								
37	***	***								
38	T T T	T T T								
39	***	***								
40	***	***								
41	***	***								
42	***	***								
43	***	***								
44	***	***								
45	***	***								

***** Structure Table of Model *****

	S F	S F								
	3 F F F	3 F F F								
	0 H H H	3 H H H								
	3 0 0 0	3 0 0 0								
	W X X	W X X								
	E E W	E E W								
	4 4 E	4 4 E								
46	***	***								
47	***	***								
48	T T T	T T T								
49	***	***								
50	***	***								
51	***	***								
52	***	***								
53	***	***								
54	***	***								
55	***	***								
56	***	***								
57	***	***								
58	***	***								
59	***	***								
60	***	***								
61	***	***								
62	***	***								
63	***	***								
64	***	***								
65	T	T								
66	T T T	T T T								
67	T T T	T T T								
68	***	***								
69	***	***								
70	**	**								
71	T T T	T T T								
72	***	***								

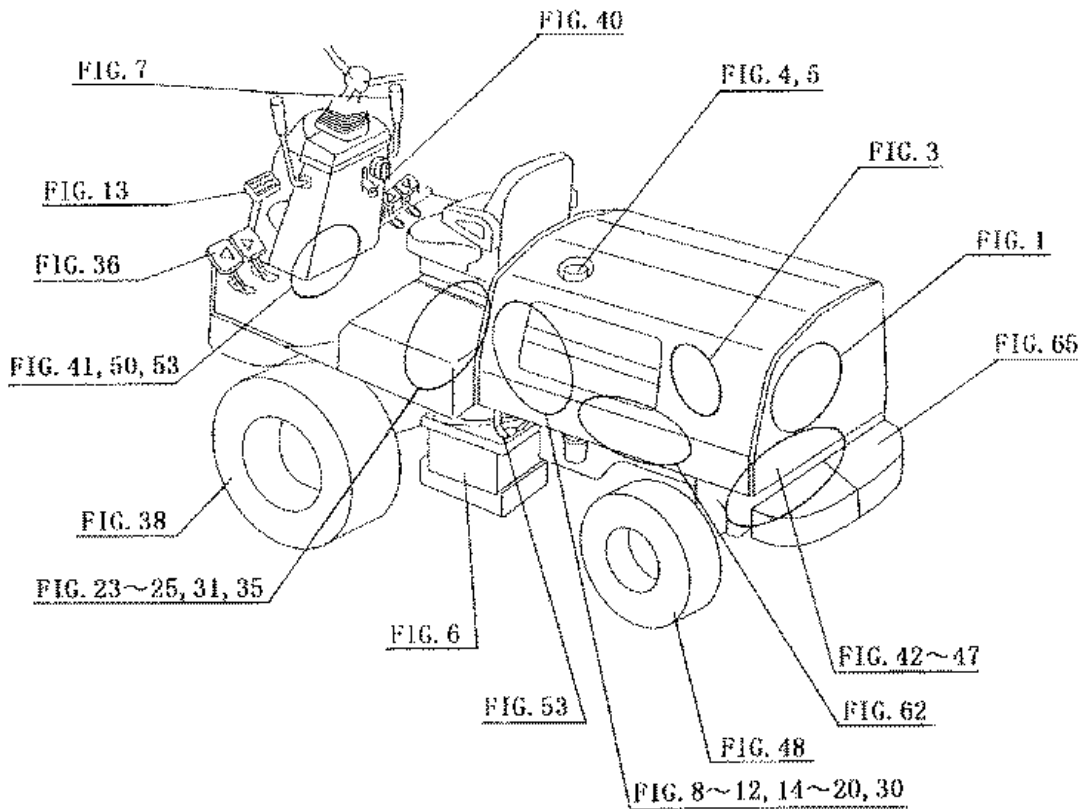
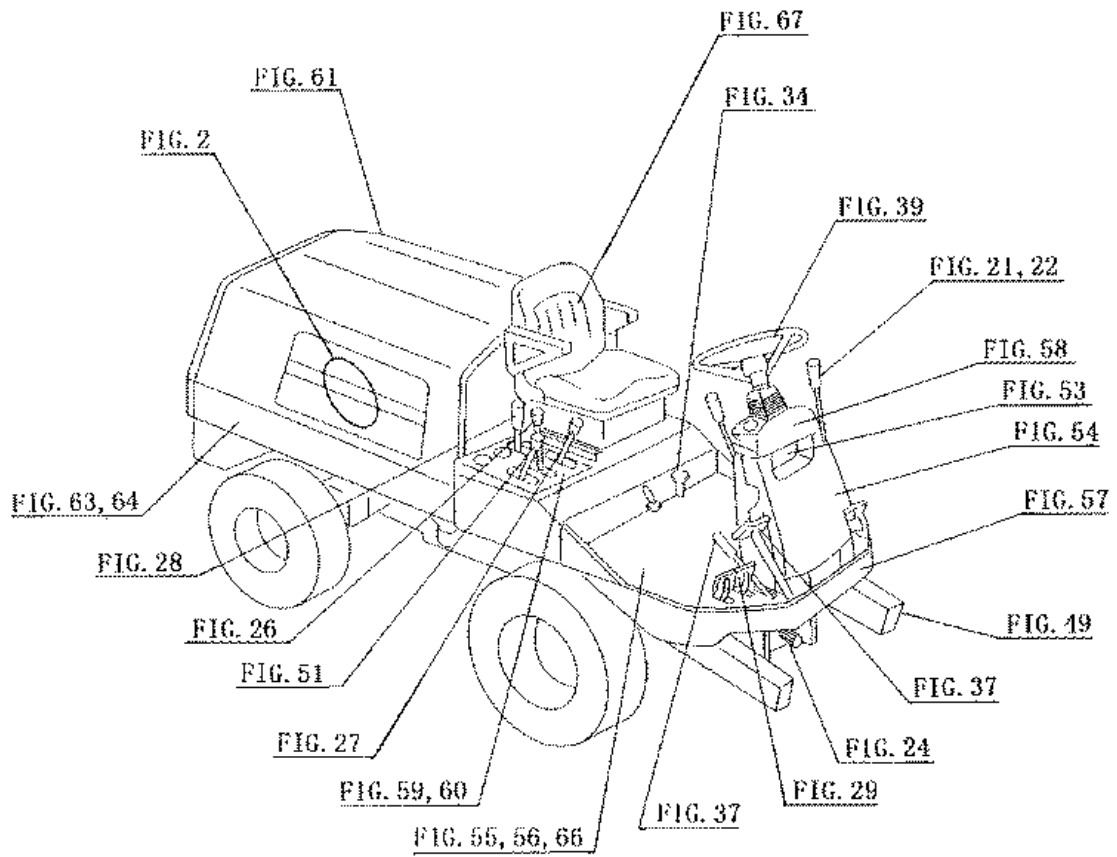
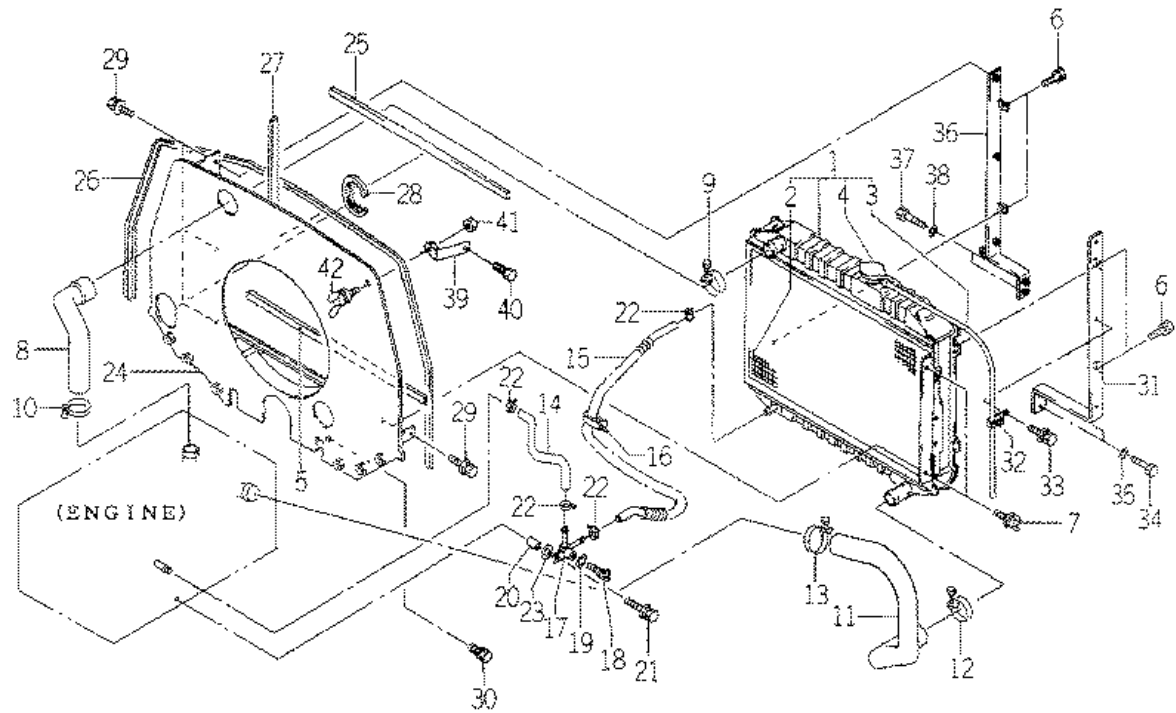
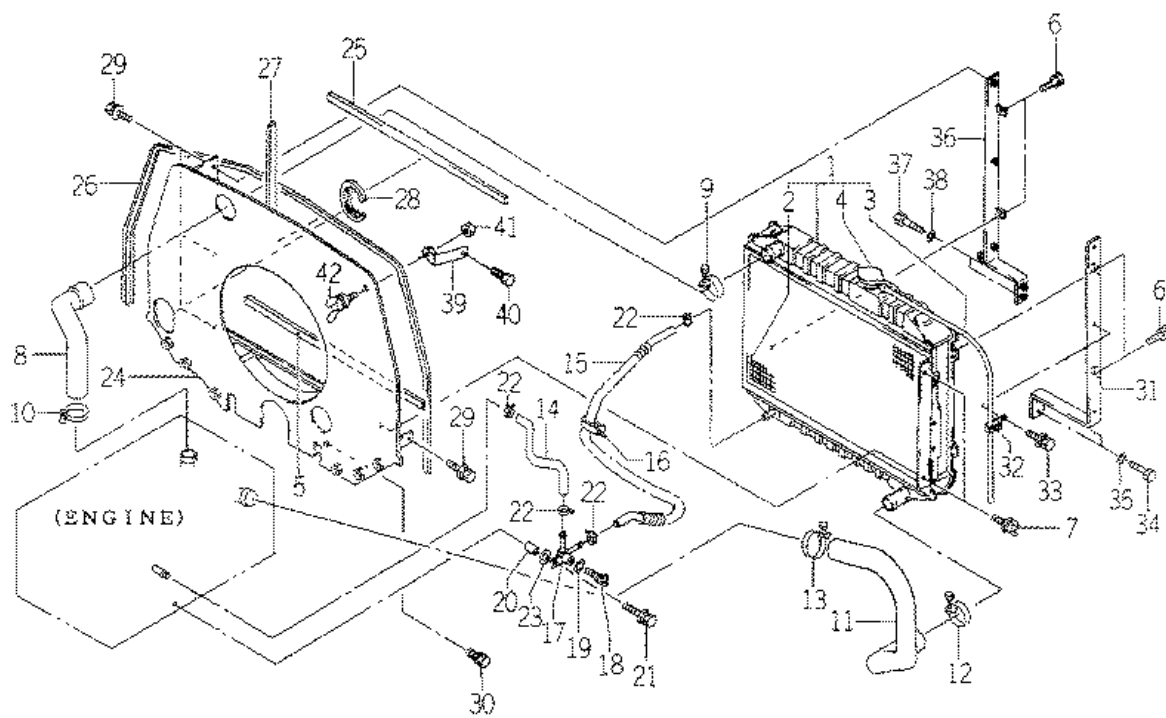


FIG. 1 RADIATOR SYSTEM



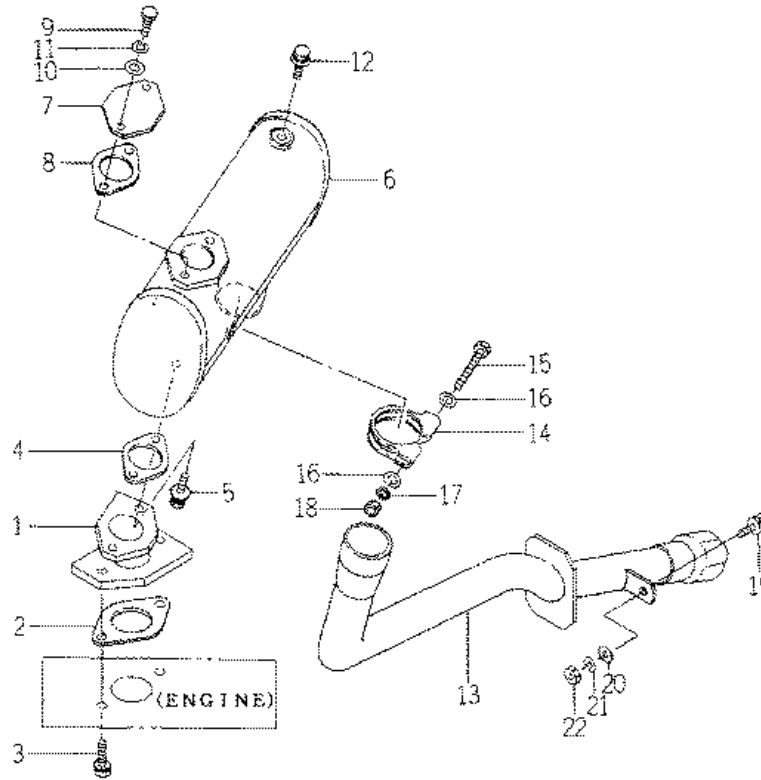
KEY	Part Code	Description	S P C	Type of Model					I T C	C O L	G R P	Remarks
				SF303	SF333							
1	1636-102-200-10	RADIATOR ASSY	*	1	1							
2	1636-102-202-10	NET	*	1	1							
3	1636-102-203-00	HOSE	*	1	1							
4	1421-101-313-00	CAP	*	1	1							
5	1636-102-007-00	INSULATOR	*	1	1							
6	V211-260-802-00	BOLT,SEMS (S)	*	4	4							
7	V273-360-802-00	BOLT,SEMS/M8X20	*	2	2							
8	1636-102-021-00	HOSE/RADIATOR/INLET	*	1	1							
9	J061-242-050-00	CLAMP/WIRE/42-50	*	1	1							
10	J061-236-044-00	CLAMP/WIRE/36-44	*	1	1							
11	1636-102-022-00	HOSE/RADIATOR/OUTLET	*	1	1							
12	J061-242-050-00	CLAMP/WIRE/42-50	*	1	1							
13	J061-236-044-00	CLAMP/WIRE/36-44	*	1	1							
14	1720-102-003-00	HOSE/190	*	1	1							
15	1720-102-004-00	HOSE/680 ASSY	*	1	1							
16	1425-621-004-00	CLAMP,HARNESS	*	2	2							
17	1560-104-010-40	CONNECTOR	*	1	1							
18	1424-101-203-00	PLUG	*	1	1							
19	1424-101-204-00	PACKING	*	1	1							
20	1636-102-012-00	COLLAR/09X13X28	*	1	1							
21	V211-360-805-00	BOLT,SEMS (SP)	*	1	1							
22	J061-210-015-00	CLAMP/WIRE/10-15	*	4	4							
23	V411-260-008-00	WASHER,PL/M 8	*	1	1							
24	1636-102-310-10	COVER/FAN COMP	*	1	1							
25	1636-102-007-00	INSULATOR	*	1	1							
26	1636-102-011-00	TRIM/1385	*	1	1							
27	1636-102-008-00	INSULATOR/SIDE	*	1	1							
28	1636-102-009-00	TRIM/205	*	1	1							
29	V211-360-802-00	BOLT(SP) M8X20	*	4	4							
30	V211-260-802-00	BOLT,SEMS (S)	*	2	2							

FIG. 1 RADIATOR SYSTEM



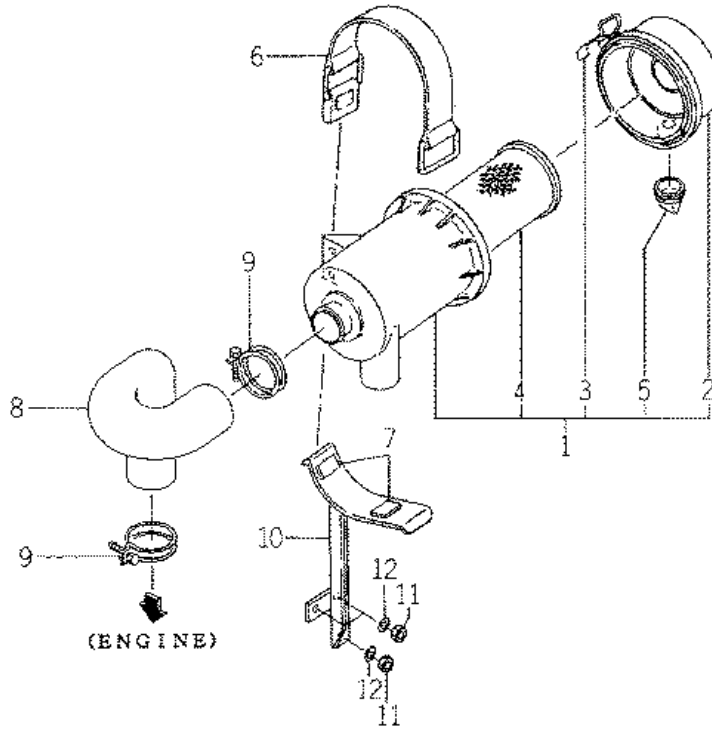
KEY	Part Code	Description	S P C	Type of Model				I T C	C O L	G R P	Remarks
				SF303	SF333						
31	1636-102-240-10	FRAME/RADIATOR/LH	*	1	1						
32	1425-621-004-00	CLAMP,HARNESS	*	1	1						
33	V211-360-802-00	BOLT(SP) M8X20	*	1	1						
34	V201-261-203-00	BOLT/M12X30	*	2	2						
35	V401-160-012-00	WASHER,SP/M12	*	2	2						
36	1636-102-250-00	FRAME/RADIATOR/RH	*	1	1						
37	V201-261-203-00	BOLT/M12X30	*	2	2						
38	V401-160-012-00	WASHER,SP/M12	*	2	2						
39	1636-102-330-00	PLATE/L COMP	*	1	1						
40	V201-260-802-50	BOLT/M 8X25	*	1	1						
41	V304-260-008-00	NUT/M 8	*	1	1						
42	V273-360-802-00	BOLT,SEMS/M8X20	*	1	1						

FIG. 2 MUFFLER SYSTEM



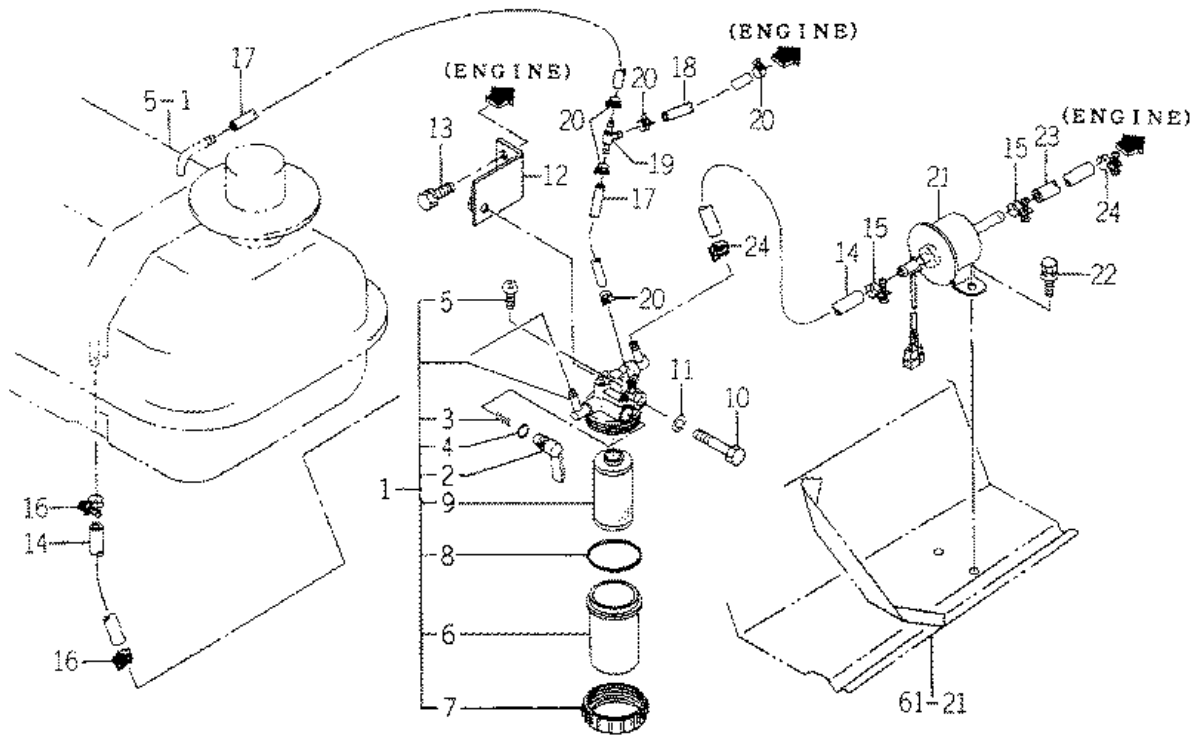
KEY	Part Code	Description	SPC	Type of Model						I T C	C O L	G R P	Remarks
				SF303	SF333								
1	1636-103-240-00	PIPE COMP	*	1	1								
2	1596-105-001-00	GASKET	*	1	1								
3	1636-103-003-00	BOLT/SP/M10X1.25X30	*	2	2								
4	1594-105-001-00	GASKET	*	1	1								
5	1560-105-004-00	BOLT/M10X25	*	2	2								
6	1560-105-260-00	MUFFLER COMP	*	1	1								
7	1560-105-252-00	COVER	*	1	1								
8	1594-105-001-00	GASKET	*	1	1								
9	V203-261-002-00	BOLT/M10X20	*	2	2								
10	V411-260-010-00	WASHER/M10	*	2	2								
11	V401-160-010-00	WASHER,SP/M10	*	2	2								
12	V211-360-801-60	BOLT,SEMS (SP)	*	1	1								
13	1636-103-220-10	TAILPIPE COMP	*	1	1								
14	1560-105-251-00	CLAMP	*	1	1								
15	V201-260-808-00	BOLT/M 8X80	*	1	1								
16	V411-260-008-00	WASHER,PL/M 8	*	2	2								
17	V401-160-008-00	WASHER,SP/M 8	*	1	1								
18	V304-260-008-00	NUT/M 8	*	1	1								
19	V211-360-802-50	BOLT,SEMS	*	1	1								
20	V411-260-008-00	WASHER,PL/M 8	*	1	1								
21	V401-160-008-00	WASHER,SP/M 8	*	1	1								
22	V304-260-008-00	NUT/M 8	*	1	1								

FIG. 3 CLEANER (AIR) SYSTEM



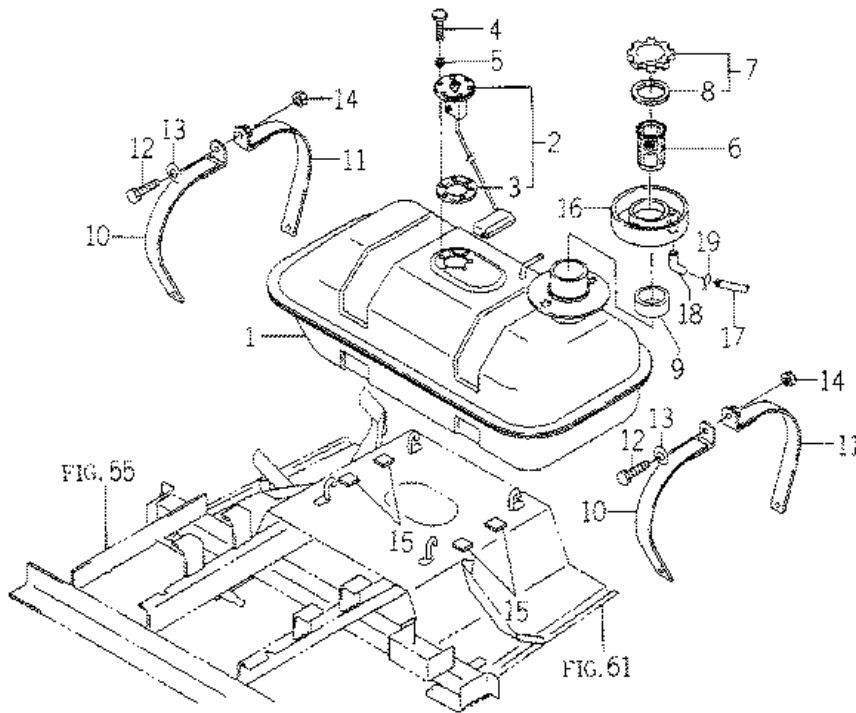
KEY	Part Code	Description	S P C	Type of Model					I T C	C O L	G R P	Remarks
				SF303	SF333							
1	1650-104-200-00	CLEANER AIR ASSY	*	1	1							
2	1650-104-210-00	COVER ASSY	*	1	1							
3	1650-104-201-00	CLIP	*	2	2							
4	1650-104-203-00	ELEMENT ASSY	*	1	1							
5	1544-104-205-00	VALVE	*	1	1							
6	1614-104-001-00	BAND/CLEANER	*	1	1							
7	1427-111-229-00	CUSHION,RUBBER	*	2	2							
8	1636-104-002-00	PIPE/CLEANER/OUTLET	*	1	1							
9	J061-252-063-00	CLAMP/WIRE/52-63	*	2	2							
10	1720-104-210-00	STAY/AIRCLEANER COMP	*	1	1							
11	V301-260-006-00	NUT/M 6	*	3	3							
12	V401-160-006-00	WASHER,SP/M 6	*	3	3							

FIG. 4 FILTER (FUEL) SYSTEM



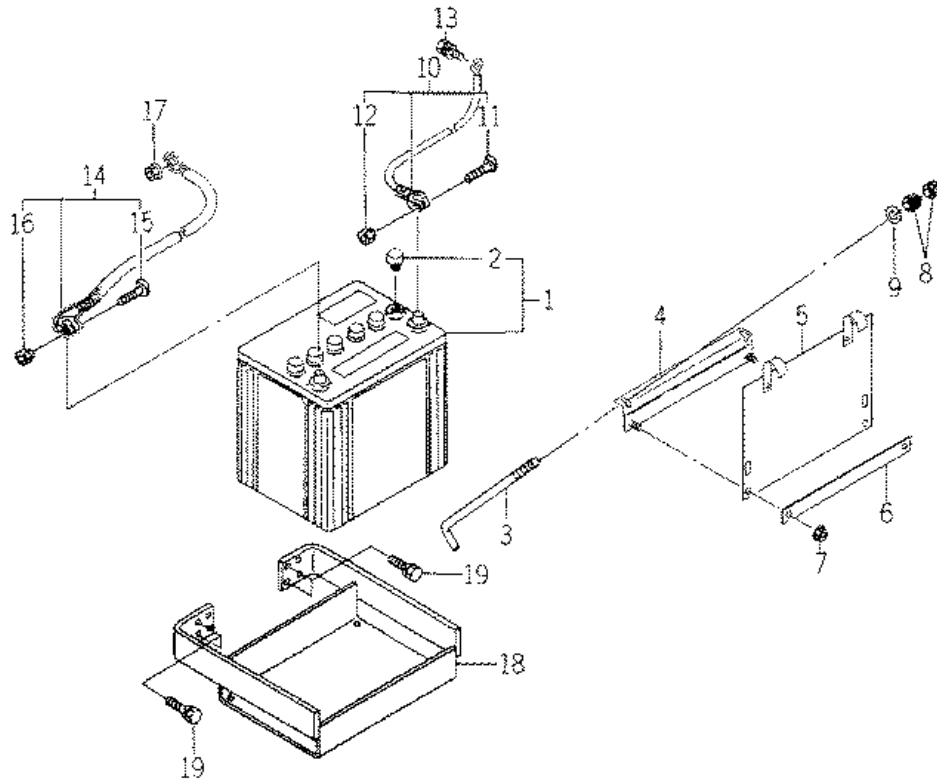
KEY	Part Code	Description	S P C	Type of Model				I T C	C O L	G R P	Remarks
				SF303	SF333						
1	1614-105-200-00	FILTER ASSY	*	1	1						
2	1444-102-202-00	LEVER	*	1	1						
3	1415-102-007-00	SPRING,VALVE	*	1	1						
4	V720-102-401-00	O-RING/P10A	*	1	1						
5	1415-102-008-00	VIS	*	1	1						
6	1415-102-009-00	CUP	*	1	1						
7	1444-102-204-00	NUT,RING	*	1	1						
8	V720-103-504-40	O-RING/P44	*	1	1						
9	1672-105-211-00	ELEMENT	*	1	1						
10	V201-260-806-50	BOLT/M 8X65	*	1	1						
11	V401-160-008-00	WASHER,SP/M 8	*	1	1						
12	1636-105-210-00	STAY/FILTER COMP	*	1	1						
13	V211-260-801-60	BOLT,SEMS (S) M8X16	*	2	2						
14	3104-305-001-00	HOSE/420	*	2	2						
15	J061-210-012-00	CLAMP/WIRE/10-12	*	2	3						
16	J061-209-011-00	CLAMP/WIRE/09-11	*	2	1						
17	1614-105-004-00	HOSE/04X08X400	*	2	2						
18	1614-105-005-00	HOSE/04X08X200	*	1	1						
19	3632-360-036-00	JOINTT-TYPE 2	*	1	1						
20	J062-087-093-00	CLIP/HOSE/8.7-9.3	*	5	5						
21	3805-311-210-10	PUMP/FUEL ASSY	*	1	1						
22	V210-360-601-60	BOLT(SP)/M6X16	*	2	2						
23	3104-305-001-00	HOSE/420	*	1	1						
24	J061-209-011-00	CLAMP/WIRE/09-11	*	2	2						

FIG. 5 TANK (FUEL) SYSTEM



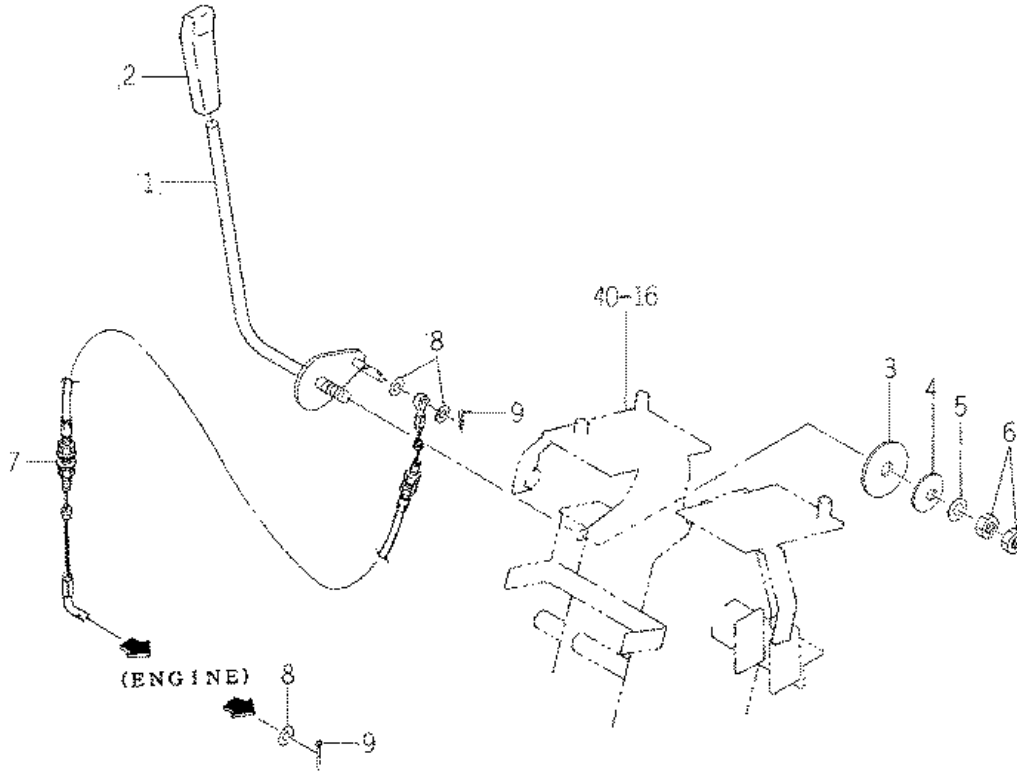
KEY	Part Code	Description	S P C	Type of Model				I T C	C O L	G R P	Remarks
				SF303	SF333						
1	1636-111-210-10	TANK/FUEL COMP	*	1	1						
2	3676-310-210-00	GAUGE/FUEL ASSY	*	1	1						
3	1416-621-037-00	PACKING/RUBBER	*	1	1						
4	V200-260-501-0B	BOLT/SEAL	*	5	5						
5	1564-664-003-00	INSULATOR	*	4	4						
6	1620-111-004-00	FILTER/FUEL	*	1	1						
7	1640-111-200-00	CAP/TANC ASSY	*	1	1						
8	1640-111-202-00	GASKET	*	1	1						
9	1636-111-009-10	TUBE/56X66X25	*	1	1						
10	1636-111-230-00	BAND/A COMP	*	2	2						
11	1636-111-240-00	BAND/B COMP	*	2	2						
12	W201-260-805-00	BOLT/M 8X50	*	2	2						
13	V411-260-008-00	WASHER,PL/M 8	*	2	2						
14	V304-260-008-00	NUT/M 8	*	2	2						
15	2157-301-003-00	RUBBER/PLATE	*	4	4						
16	1614-111-004-10	CUP/FUEL	*	1	1						
17	1614-111-002-10	HOSE/03X07X800	*	1	1						
18	1636-111-010-00	PIPE/DRAIN	*	1	1						
19		WIRE	*	2	2						

FIG. 6 BATTERY SYSTEM



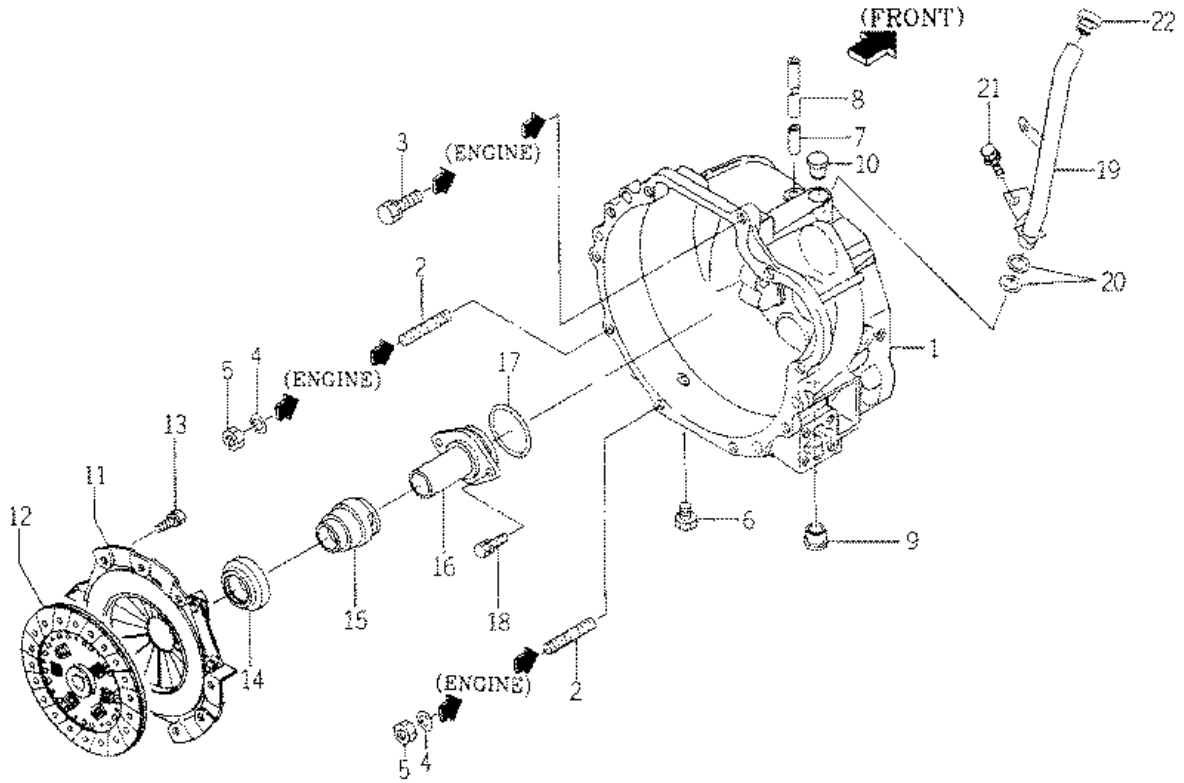
KEY	Part Code	Description	S P C	Type of Model						I T C	C O L	G R P	Remarks
				SF303	SF333								
1	1659-650-200-00	BATTERY/80D26R-MF	*	1	1								
2	1617-112-213-00	CAP	*	6	6								
3	1416-112-002-00	BOLT,BATTERY SET	*	2	2								
4	1636-112-220-00	PLATE/BATTERY COMP	*	1	1								
5	1636-112-230-00	COVER/BATTERY COMP	*	1	1								
6	1636-112-006-00	PLATE/1/25X292	*	1	1								
7	V363-260-008-00	NUT,LOCK/M8	*	2	2								
8	V301-260-006-00	NUT/M 6	*	4	4								
9	V411-260-006-00	WASHER / M6	*	2	2								
10	1588-112-002-10	CABLE/EARTH ASSY	*	1	1								
11	1600-112-231-00	BOLT/M06X32	*	1	1								
12	1600-112-232-00	NUT/M06	*	1	1								
13	V211-361-002-00	BOLT,SEMS	*	1	1								
14	1716-112-210-00	CABLE/BATTERY ASSY	*	1	1								
15	1600-112-231-00	BOLT/M06X32	*	1	1								
16	1600-112-232-00	NUT/M06	*	1	1								
17	V362-260-008-00	NUT/WASHER	*	1	1								
18	1636-112-210-10	BRACKET/BATTERY COMP	*	1	1								
19	V211-261-002-50	BOLT(S) M10X25	*	4	4								

FIG. 7 LEVER (ACCELERATOR) SYSTEM



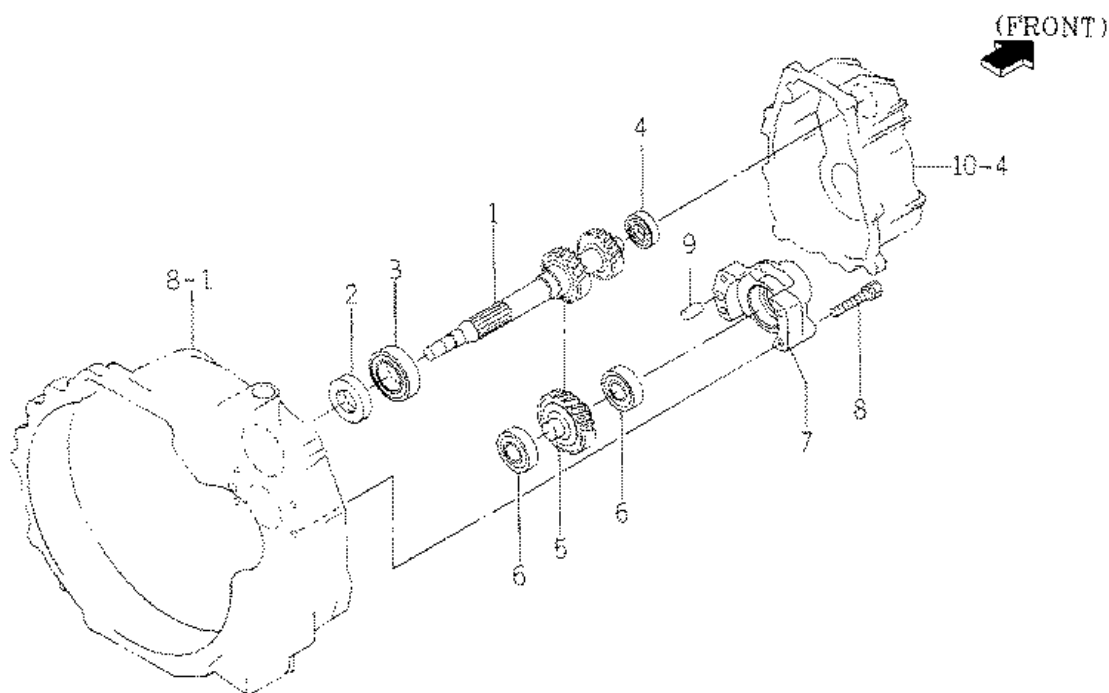
KEY	Part Code	Description	S P C	Type of Model						I T C	C O L	G R P	Remarks
				SF303	SF333								
1	1720-117-210-00	LEVER/ACCELERATOR	*	1	1								
2	1646-116-051-00	GRIP/THROTTLE	*	1	1								
3	1600-505-007-00	LINING/13X50X3	*	1	1								
4	1593-117-003-10	SPRING,DISK	*	1	1								
5	V411-260-010-00	WASHER/M10	*	1	1								
6	V304-260-010-00	NUT	*	2	2								
7	1636-117-200-00	CABLE/ACCELERATOR	*	1	1								
8	V411-260-006-00	WASHER / M6	*	3	3								
9	V500-162-501-50	PIN,SPLIT/2.5X15	*	2	2								

FIG. 8 MAIN CLUTCH SYSTEM



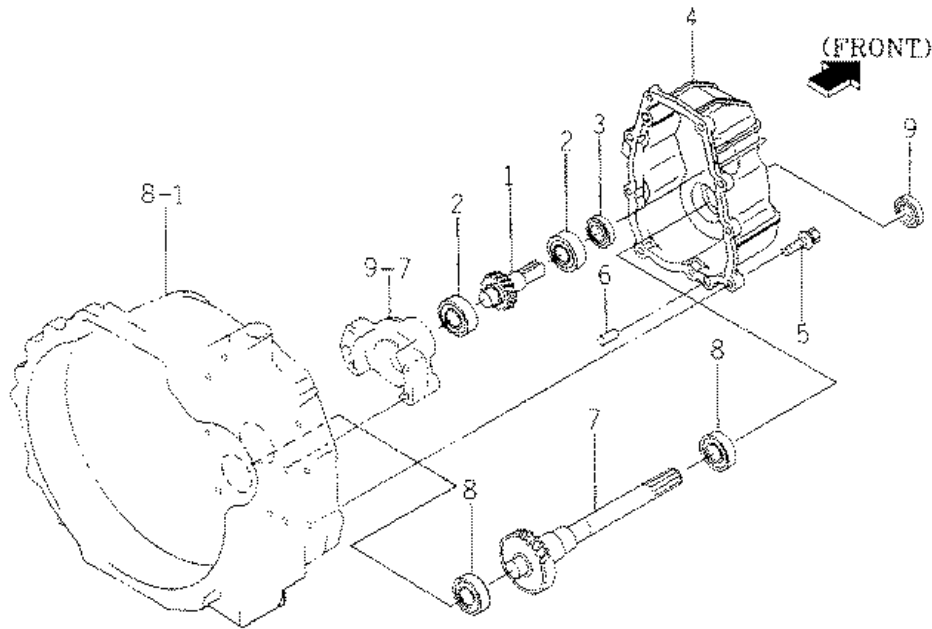
KEY	Part Code	Description	S P C	Type of Model					I T C	C O L	G R P	Remarks
				SF303	SF333							
1	1687-120-004-10	HOUSING/CLUTCH	*	1	1							
2	V251-341-002-50	BOLT/STUD	*	3	3							
3	V211-561-003-00	BOLT/M10X30	*	8	8							
4	V401-160-010-00	WASHER,SP/M10	*	3	3							
5	V304-460-010-00	NUT/M10	*	3	3							
6	V782-160-000-4B	PLUG/SCREW/SEAL	*	3	3							
7	1544-120-008-10	PIPE,BREATHER	*	1	1							
8	1544-120-009-00	TUBE/300 BX10X300	*	1	1							
9	1379-301-002-00	CAP,HANDLE	*	1	1							
10	1636-120-002-00	PLUG/19	*	1	1							
11	1617-120-210-00	COVER/CLUTCH ASSY	*	1	1							
12	1617-120-220-00	DISK/CLUTCH/215 COMP	*	1	1							
13	V211-260-802-00	BOLT,SEMS (S)	*	6	6							
14	1614-120-002-00	BEARING/RELEASE	*	1	1							
15	1614-120-003-00	SLEEVE/RELEASE	*	1	1							
16	1614-120-004-00	GIDE/SLEEVE/RELEASE	*	1	1							
17	V721-103-106-00	O-RING/G60	*	1	1							
18	V211-260-802-00	BOLT,SEMS (S)	*	2	2							
19	1636-120-210-00	PIPE COMP	*	1	1							
20	V720-102-402-00	O-RING/P20	*	2	2							
21	V211-360-801-60	BOLT,SEMS (SP)	*	2	2							
22	2111-101-011-00	PLUG,OIL	*	1	1							

FIG. 9 INPUT GEAR,COUNTER GEAR SYSTEM



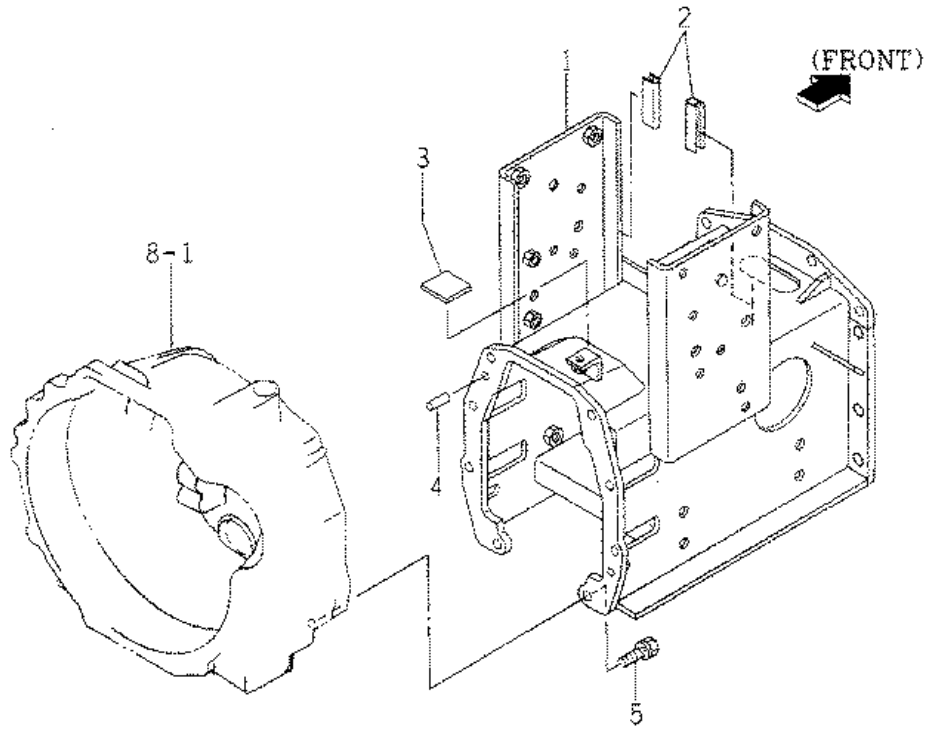
KEY	Part Code	Description	S P C	Type of Model						I T C	C O L	G R P	Remarks
				SF303	SF333								
1	1636-125-001-00	GEAR/HELICAL/21-18	*	1	1								
2	V744-130-500-80	SEAL,OIL/TC30508	*	1	1								
3	1617-244-004-00	BEARING/BALL	*	1	1								
4	3667-105-001-00	BEARING	*	1	1								
5	1620-126-002-00	GEAR/HELICAL/25	*	1	1								
6	1650-209-005-00	BEARING/BALL	*	2	2								
7	1636-126-001-00	METAL	*	1	1								
8	V211-260-805-50	BOLT/(S)M8X55	*	3	3								
9	V523-101-002-40	PIN	*	2	2								

**FIG. 10 INPUT COUNTER GEAR,
 PTO DRIVE GEAR SYSTEM**



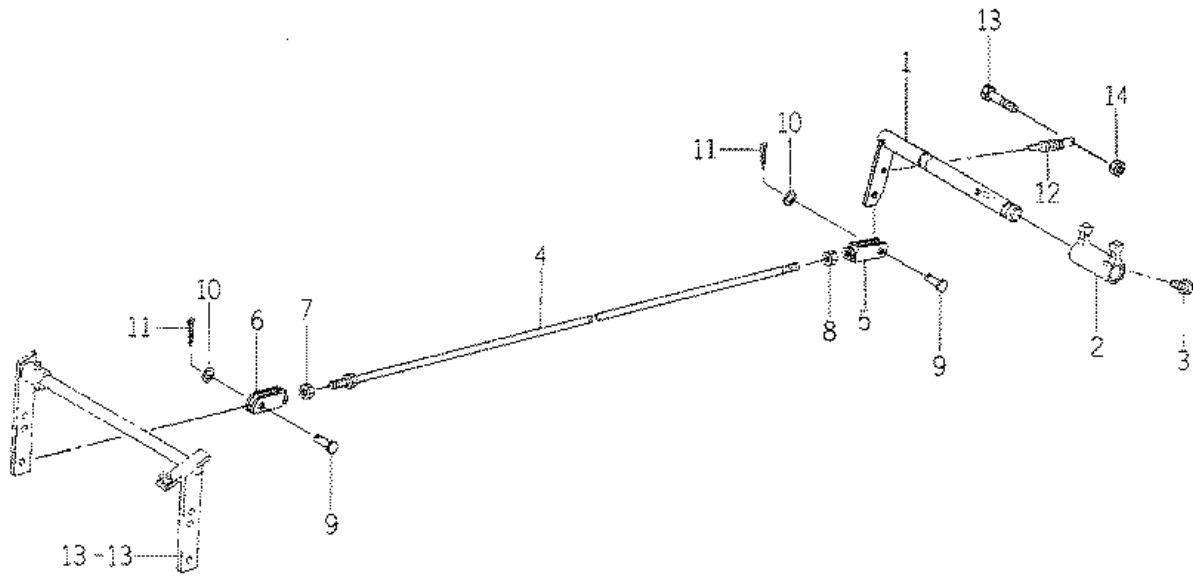
KEY	Part Code	Description	S P C	Type of Model				I T C	C O L	G R P	Remarks
				SF303	SF333						
1	1636-127-001-00	GEAR/HELICAL/14	*	1	1						
2	3651-832-009-00	R.B.B	*	2	2						
3	V744-120-350-80	SEAL,OIL/TC20358	*	1	1						
4	1620-127-052-00	METAL/INPUT	*	1	1						
5	V211-360-803-00	BOLT/M8X30	*	9	9						
6	V523-101-002-40	PIN	*	2	2						
7	1620-128-002-00	GEAR/HELICAL/25	*	1	1						
8	1600-211-052-00	BEARING/BALL	*	2	2						
9	V744-120-350-70	SEAL,OIL/TC20357	*	1	1						

FIG. 11 SPACER (HST) SYSTEM



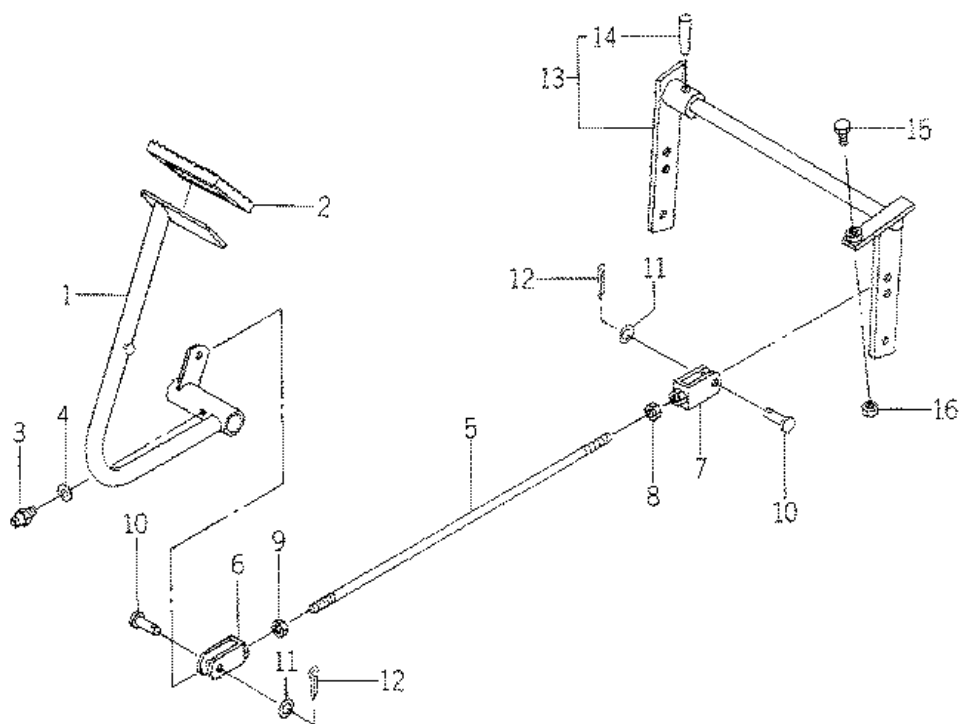
KEY	Part Code	Description	SPC	Type of Model						ITC	COL	GRP	Remarks
				SF303	SF333								
1	1720-130-210-00	CASE/SPACER COMP	*	1	1								
2	1568-701-001-00	INSULATOR	*	2	2								
3	1427-111-229-00	CUSHION,RUBBER	*	1	1								
4	1421-433-004-00	PIN,KNOCK	*	2	2								
5	V211-561-003-00	BOLT/M10X30	*	8	8								

FIG. 12 CLUTCH SHAFT SYSTEM



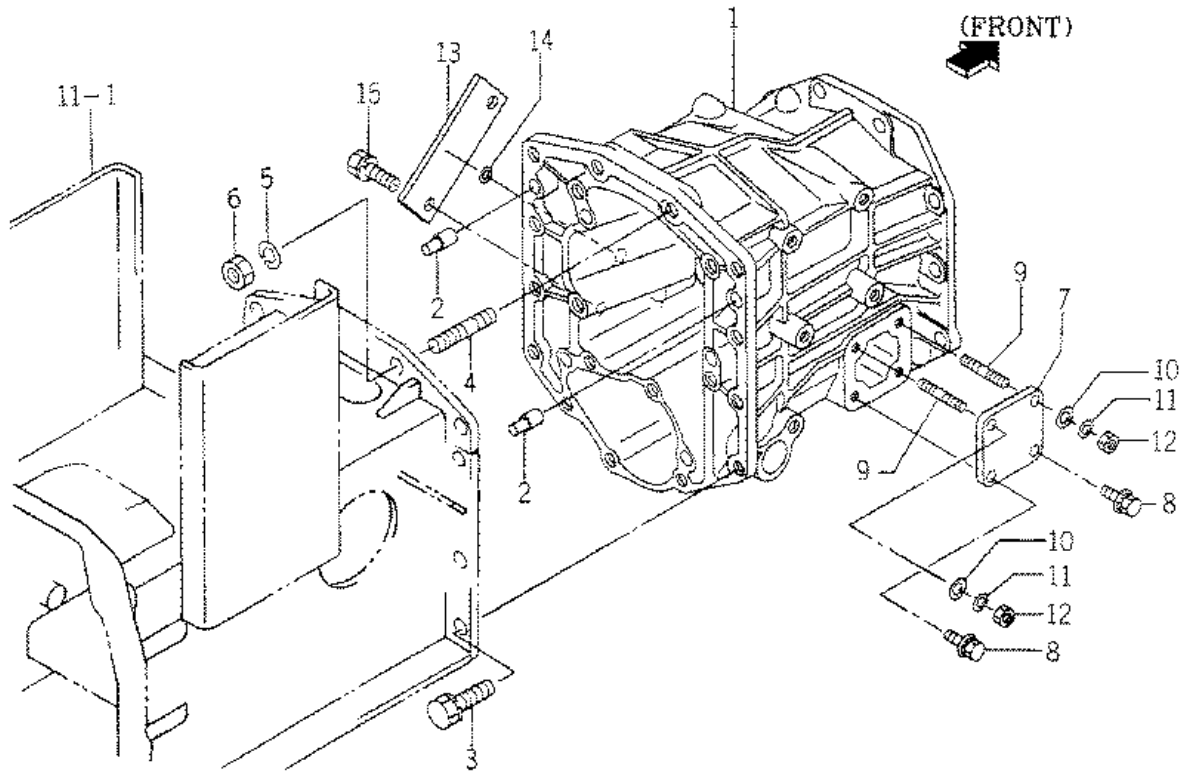
KEY	Part Code	Description	S P C	Type of Model						I T C	C O L	G R P	Remarks
				SF303	SF333								
1	1636-133-210-00	ARM/CLUTCH COMP	*	1	1								
2	1480-122-001-10	YORK,CLUTCH	*	1	1								
3	V201-460-802-50	BOLT/M 8X25	*	1	1								
4	1720-133-210-00	ROD/CLUTCH COMP	*	1	1								
5	1415-312-500-00	YOKE,LH	*	1	1								
6	1415-312-600-00	YOKE,RH	*	1	1								
7	V304-260-008-00	NUT/M 8	*	1	1								
8	1560-132-007-30	NUT/M8	*	1	1								
9	3600-462-003-00	PIN	*	2	2								
10	V411-260-008-00	WASHER,PL/M 8	*	2	2								
11	V500-163-002-00	PIN,SPLIT/3 X20	*	2	2								
12	3741-112-005-00	SPRING	*	1	1								
13	V201-261-005-00	BOLT/M10X50	*	1	1								
14	V304-260-010-00	NUT	*	1	1								

FIG. 13 PEDAL (CLUTCH) SYSTEM



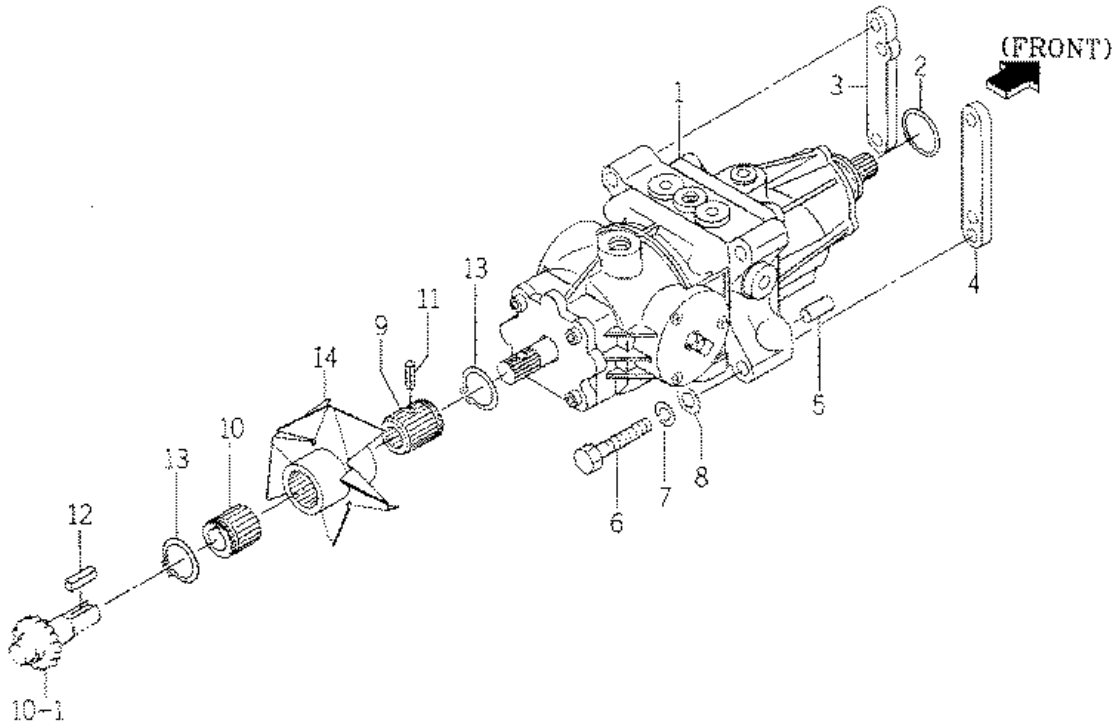
KEY	Part Code	Description	S P C	Type of Model					I T C	C O L	G R P	Remarks
				SF303	SF333							
1	1720-135-220-00	ARM/CLUTCH COMP	*	1	1							
2	1524-122-001-00	PAD	*	1	1							
3	V760-150-000-00	NIPPLE,GREASE	*	1	1							
4	V411-260-006-00	WASHER / M6	*	1	1							
5	1636-135-260-00	ROD/M08X430 COMP	*	1	1							
6	1415-312-500-00	YOKE,LH	*	1	1							
7	1415-312-600-00	YOKE,RH	*	1	1							
8	V304-260-008-00	NUT/M 8	*	1	1							
9	1560-132-007-30	NUT/M8	*	1	1							
10	3600-462-003-00	PIN	*	2	2							
11	V411-260-008-00	WASHER,PL/M 8	*	2	2							
12	V500-163-002-00	PIN,SPLIT/3 X20	*	2	2							
13	1636-135-300-00	PIN/CLUTCH SET	*	1	1							
14	1614-216-003-00	PIN/TAPER/06X45	*	1	1							
15	V201-260-803-00	BOLT/M 8X30	*	1	1							
16	V304-260-008-00	NUT/M 8	*	1	1							

FIG. 14 FRONT TRANSMISSION CASE SYSTEM



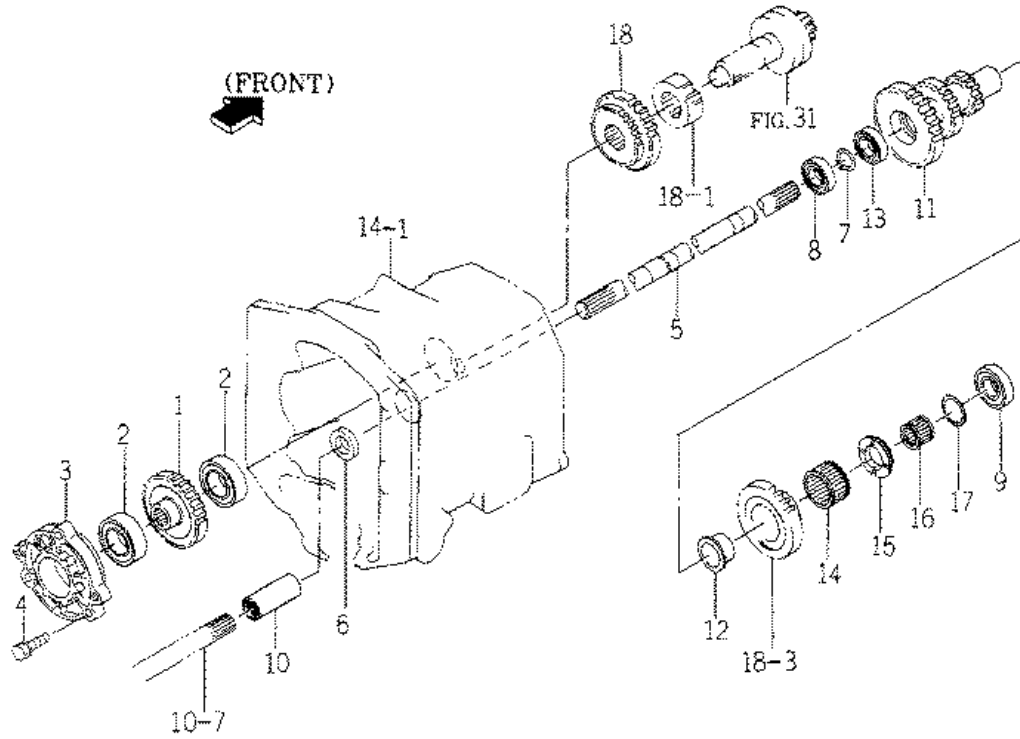
KEY	Part Code	Description	S P C	Type of Model				I T C	C O L	G R P	Remarks
				SF303	SF333						
1	1620-201-051-00	CASE/TRANSMISSIONHST	*	1	1						
2	1421-433-004-00	PIN,KNOCK	*	2	2						
3	V211-561-003-00	BOLT/M10X30	*	8	8						
4	V251-341-003-00	BOLT/STUD	*	2	2						
5	V401-160-010-00	WASHER,SP/M10	*	2	2						
6	V304-460-010-00	NUT/M10	*	2	2						
7	1560-230-002-00	COVER	*	1	1						
8	V211-360-801-60	BOLT,SEMS (SP)	*	2	2						
9	V251-260-802-0D	BOLT/STUD/SEAL	*	2	2						
10	V411-260-008-00	WASHER,PL/M 8	*	2	2						
11	V401-160-008-00	WASHER,SP/M 8	*	2	2						
12	V304-260-008-00	NUT/M 8	*	2	2						
13	1636-201-001-00	PLATE/I/45X122	*	1	1						
14	V720-102-401-40	O-RING/P14	*	1	1						
15	V211-261-002-00	BOLT,SEMS	*	2	2						

FIG. 15 HST SYSTEM



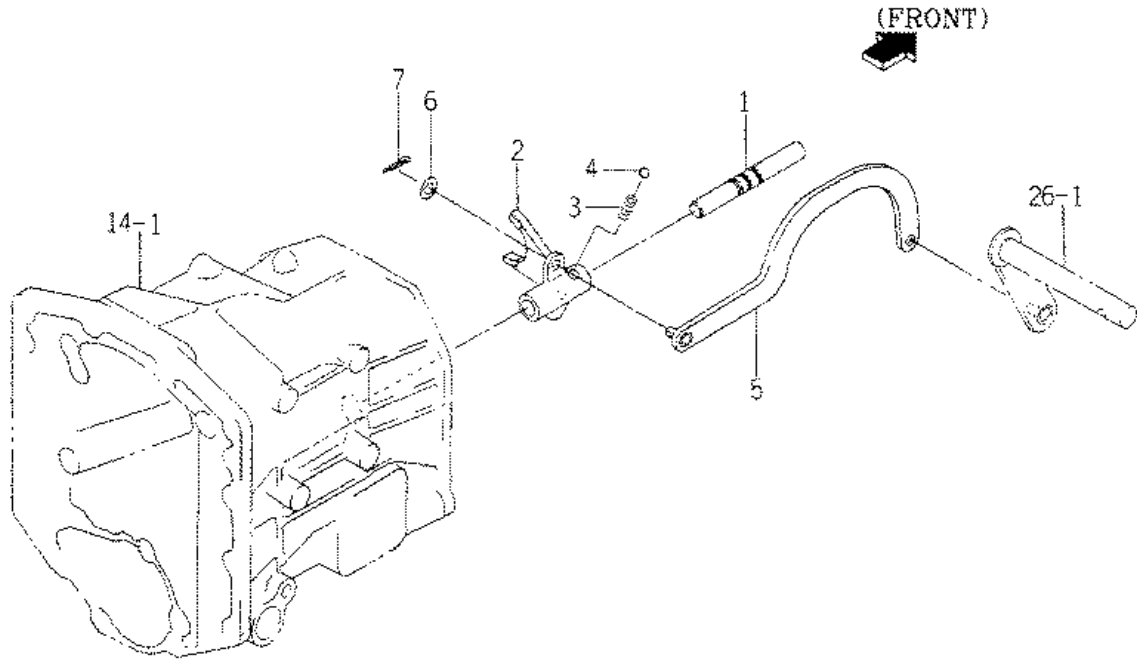
KEY	Part Code	Description	S P C	Type of Model					I T C	C O L	G R P	Remarks
				SF303	SF333							
1	1720-202-200-20	HST ASSY	*	1	1						072	
2	V720-103-504-40	O-RING/P44	*	1	1							
3	1720-202-001-00	SPACER/LH	*	1	1							
4	1720-202-002-10	SPACER/RH	*	1	1							
5	1720-202-003-00	PIN/PARALLEL	*	2	2							
6	V201-261-007-50	BOLT/M10X75	*	4	4							
7	V401-160-010-00	WASHER,SP/M10	*	4	4							
8	1365-121-005-00	WASHER/10X20X2	*	4	4							
9	1636-202-001-00	HUB/17X35X38	*	1	1							
10	1636-202-002-10	HUB/19X35X31	*	1	1							
11	V580-140-602-80	PIN,SPRING/6 X28 W	*	1	1							
12	8654-202-016-00	KEY/06X06X28	*	1	1							
13	V704-140-035-00	RING,SNAP/35 C	*	2	2							
14	1636-202-210-00	FAN/HST COMP	*	1	1							

**FIG. 16 INPUT GEAR (HST),
 SUB COUNTER GEAR (HST) SYSTEM**



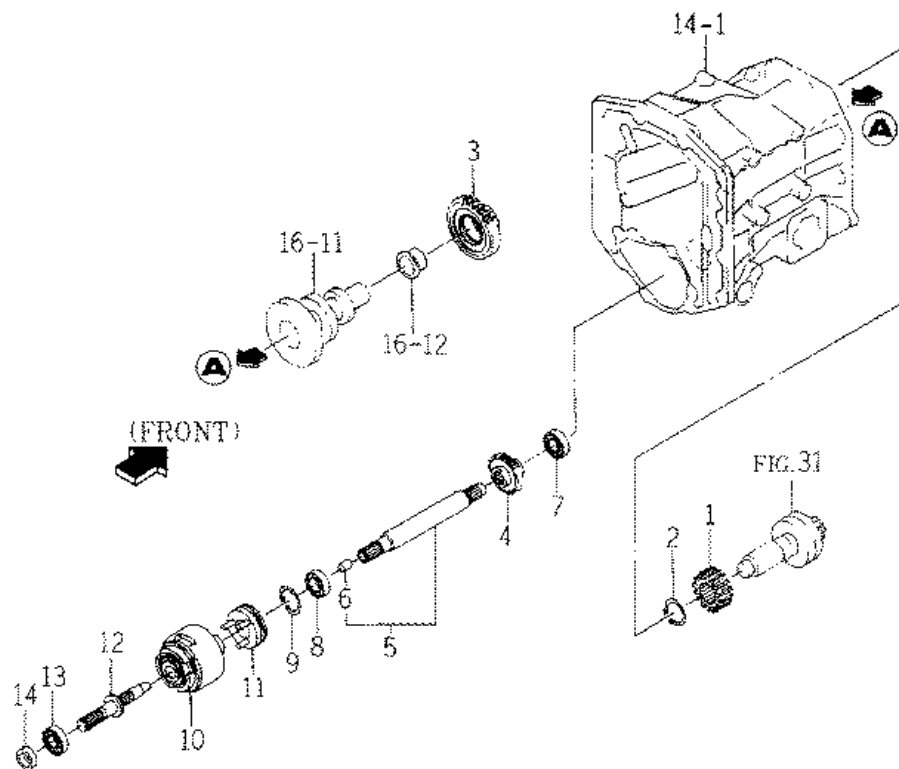
KEY	Part Code	Description	S P C	Type of Model				I T C	C O L	G R P	Remarks
				SF303	SF333						
1	1620-203-051-00	GEAR/SPUR/33	*	1	1						
2	V600-110-600-60	BEARING,RB 6006	*	2	2						
3	1620-203-052-00	METAL/INPUT	*	1	1						
4	V211-260-802-50	BOLT/S	*	3	3						
5	1720-208-001-00	SHAFT/DRIVE/PTO	*	1	1						
6	V744-120-350-70	SEAL,OIL/TC20357	*	1	1						
7	V704-140-020-00	RING,SNAP/20C	*	1	1						
8	V600-110-600-40	BEARING,RB/6004	*	1	1						
9	V600-110-600-60	BEARING,RB 6006	*	1	1						
10	1675-203-003-00	COUPLING/16X27X65	*	1	1						
11	1720-208-002-00	GEAR/SPUR/35-25-19	*	1	1						
12	1617-208-002-00	BUSH	*	1	1						
13	V600-110-600-40	BEARING,RB/6004	*	1	1						
14	1614-208-002-00	BEARING/NEEDLE	*	1	1						
15	1720-208-003-00	COLLAR/30X50X05	*	1	1						
16	1614-205-015-00	BEARING/NEEDLE	*	1	1						
17	1622-208-055-00	RING/SNAP	*	1	1						
18	1720-208-004-00	GEAR/SPUR/27-33	*	1	1						

FIG. 17 SUB CHANGE (HST) SYSTEM



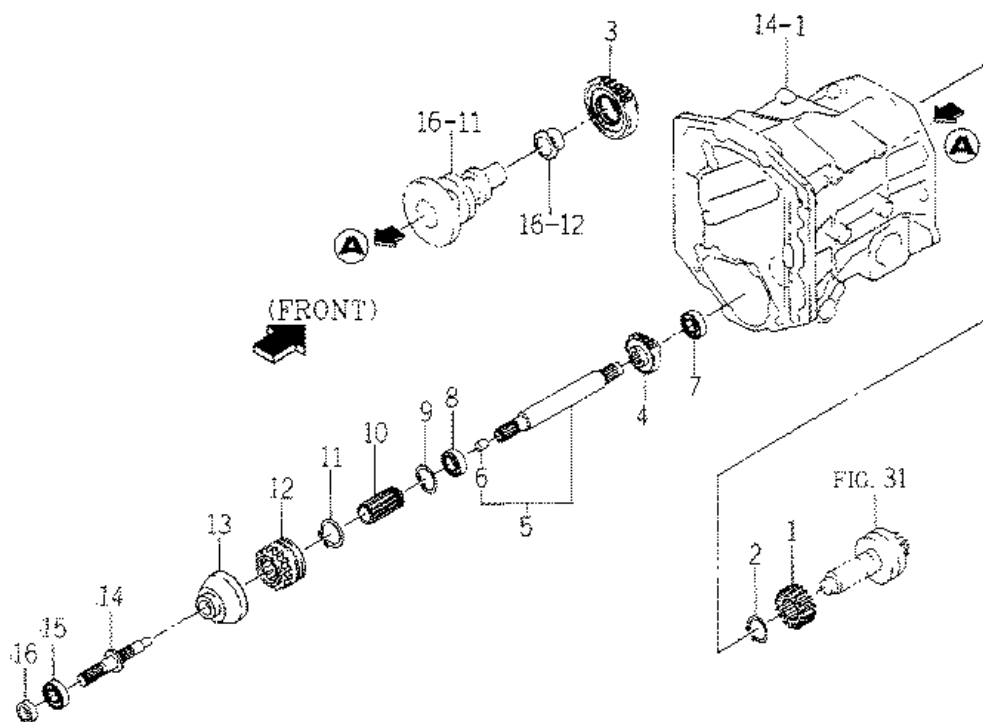
KEY	Part Code	Description	S P C	Type of Model					I T C	C O L	G R P	Remarks
				SF303	SF333							
1	1620-216-052-10	STAY/SHIFT/SUB	*	1	1							
2	1620-216-053-20	FORK/SHIFT/SUB	*	1	1							
3	1302-225-003-00	SPRING,SHIFTER	*	1	1							
4	V682-200-001-00	BALL	*	1	1							
5	1614-216-200-10	ROD/SUB COMP	*	1	1							
6	V411-260-008-00	WASHER,PL/M 8	*	1	1							
7	V500-162-002-00	PIN,SPLIT/2 X20	*	1	1							

FIG. 18 4WD GEAR (PART TIME) SYSTEM (X TYPE)



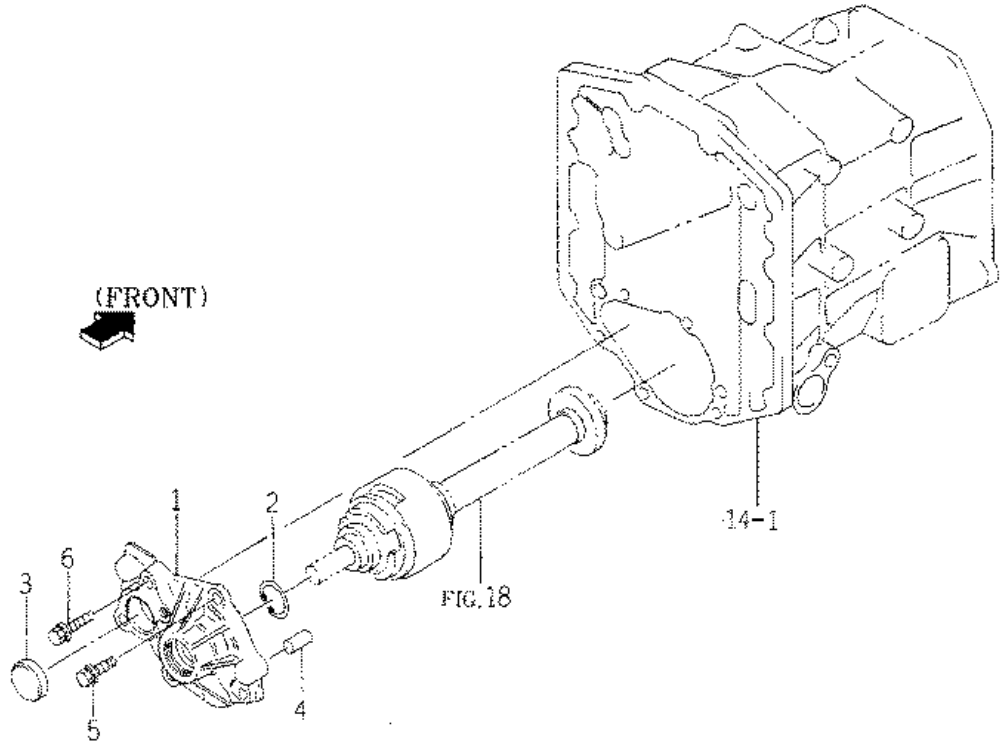
KEY	Part Code	Description	S P C	Type of Model					I T C	C O L	G R P	Remarks
				SF303	SF333							
1	1617-221-001-10	GEAR/SPUR/16	*	1	1							
2	V704-140-030-00	RING,SNAP/30 C	*	1	1							
3	1617-221-002-10	GEAR/SPUR/27	*	1	1							
4	1617-223-002-00	GEAR/SPUR/21	*	1	1							
5	1636-221-200-00	SHAFT/FRONT ASSY	*	1	1							
6	1614-223-221-00	BUSH/10X12X15	*	1	1							
7	3667-105-001-00	BEARING	*	1	1							
8	V600-110-600-40	BEARING,RB/6004	*	1	1							
9	V705-140-042-00	RING,SNAP/42 C	*	1	1							
10	1614-223-210-00	CLUTCH ASSY	*	1	1						070	
11	1614-223-230-00	SLEEVE ASSY	*	1	1							
12	1614-223-003-00	SHAFT/4WD	*	1	1							
13	V600-110-600-40	BEARING,RB/6004	*	1	1							
14	1614-222-007-00	SEAL/OIL	*	1	1							

FIG. 19 4WD GEAR SYSTEM (EXCEPT X TYPE)



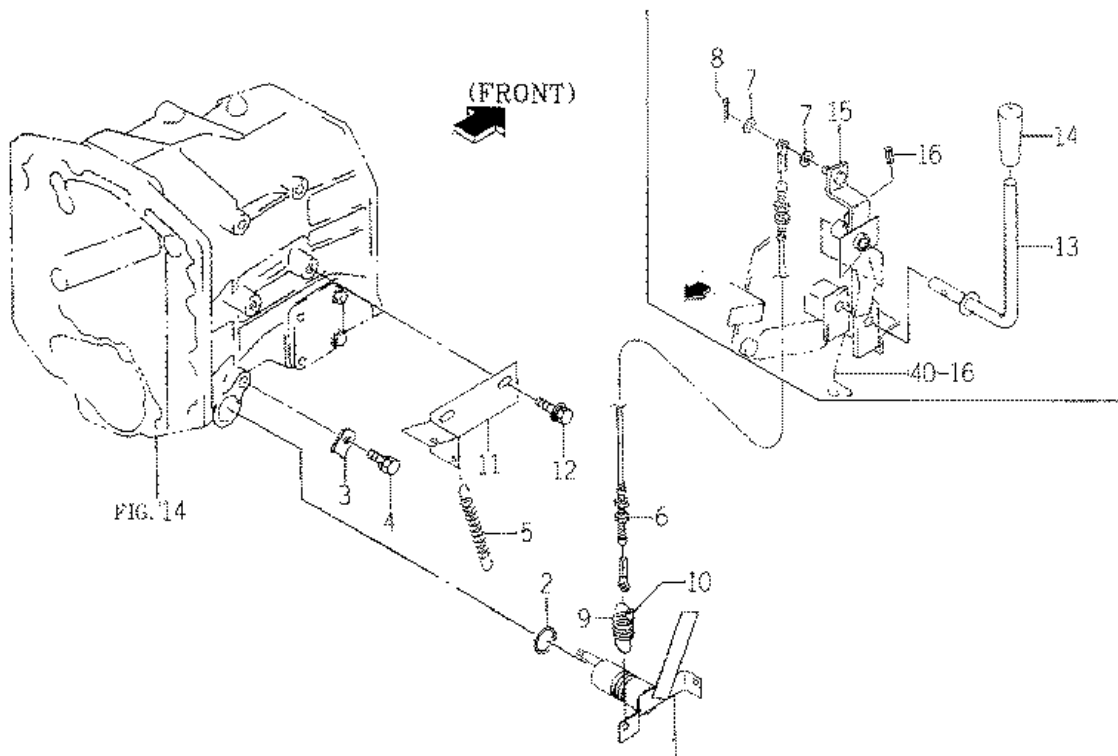
KEY	Part Code	Description	S P C	Type of Model						I T C	C O L	G R P	Remarks
				SF303	SF333								
1	1617-221-001-10	GEAR/SPUR/16	*	1	1								
2	V704-140-030-00	RING,SNAP/30 C	*	1	1								
3	1617-221-002-10	GEAR/SPUR/27	*	1	1								
4	1617-223-002-00	GEAR/SPUR/21	*	1	1								
5	1636-221-200-00	SHAFT/FRONT ASSY	*	1	1								
6	1614-223-221-00	BUSH/10X12X15	*	1	1								
7	3667-105-001-00	BEARING	*	1	1								
8	V600-110-600-40	BEARING,RB/6004	*	1	1								
9	V705-140-042-00	RING,SNAP/42 C	*	1	1								
10	1636-222-001-20	SLEEVE	*	1	1								
11	V704-140-030-00	RING,SNAP/30 C	*	1	1								
12	1636-222-002-10	GEAR/SPUR/20	*	1	1								
13	1636-222-003-00	HUB	*	1	1								
14	1614-223-003-00	SHAFT/4WD	*	1	1								
15	V600-110-600-40	BEARING,RB/6004	*	1	1								
16	1614-222-007-00	SEAL/OIL	*	1	1								

FIG. 20 INPUT CASE (PART TIME) SYSTEM



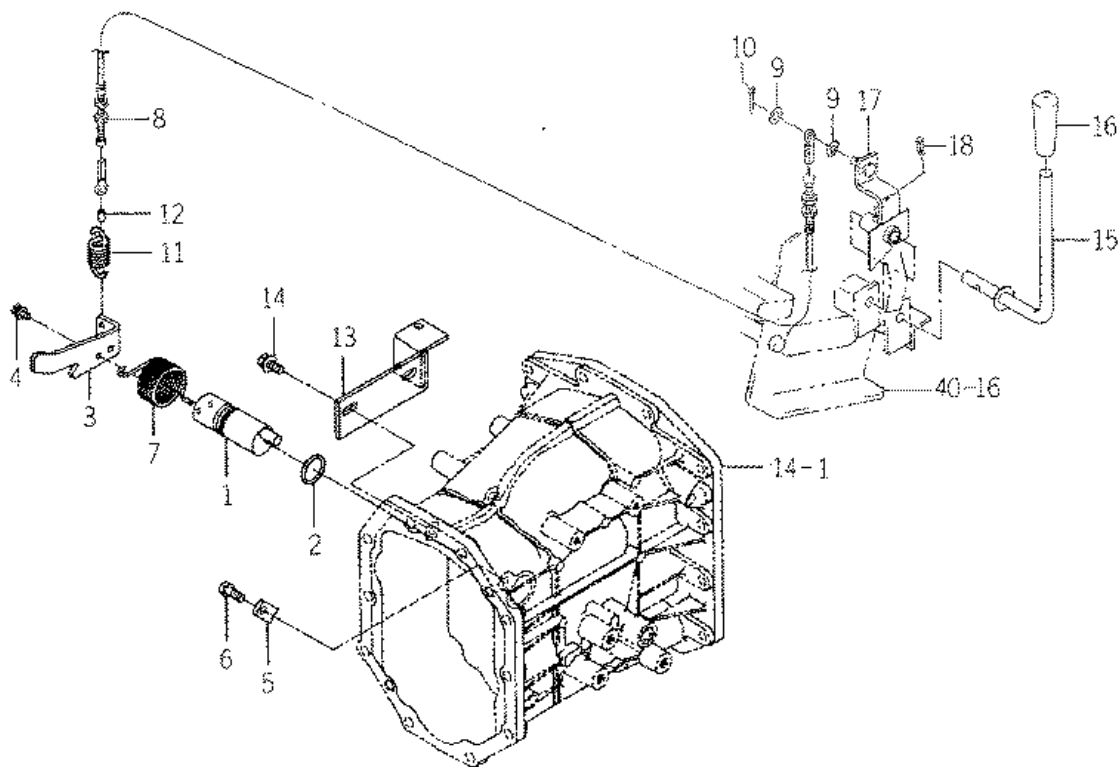
KEY	Part Code	Description	S P C	Type of Model					I T C	C O L	G R P	Remarks
				SF303	SF333							
1	1620-221-051-00	METAL/CLUTCH	*	1	1							
2	1614-203-014-00	RING/SNAP/CH	*	1	1							
3	1636-223-001-00	PLUG/SEAL/34	*	1	1							
4	V523-101-002-40	PIN	*	2	2							
5	V211-360-803-00	BOLT/M8X30	*	3	3							
6	V211-360-804-50	BOLT/SP	*	2	2							

FIG. 21 4WD CHANGE (PART TIME) SYSTEM (X TYPE)



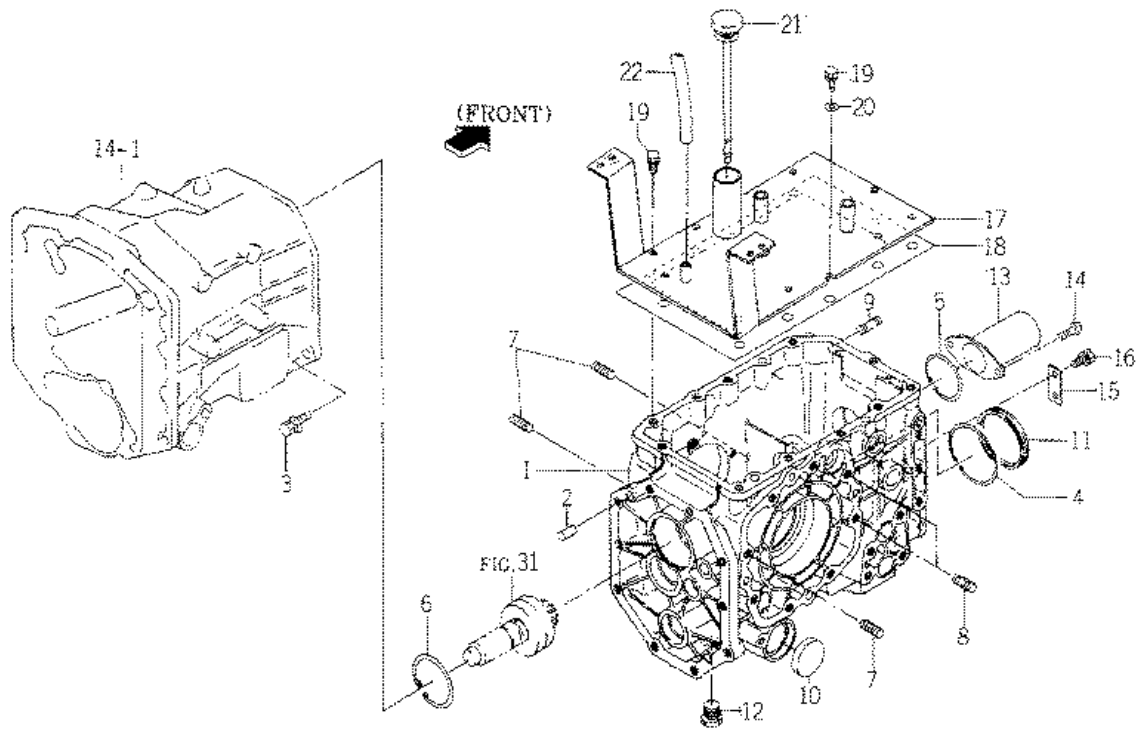
KEY	Part Code	Description	S P C	Type of Model				I T C	C O L	G R P	Remarks
				SF303	SF333						
1	1636-225-210-20	PLATE/SHIFT COMP	*	1	1						
2	V720-103-502-40	O-RING/P24	*	1	1						
3	1550-531-302-00	ARM/B	*	1	1						
4	V211-260-802-00	BOLT,SEMS (S)	*	1	1						
5	1414-312-002-00	SPRING,TENSION/53	*	1	1						
6	1636-226-300-00	CABLE/4WD/LOCK	*	1	1						
7	V411-260-008-00	WASHER,PL/M 8	*	2	1						
8	V500-163-002-00	PIN,SPLIT/3 X20	*	1	1						
9	1374-401-001-00	SPRING,CLUTCH	*	1	1						
10	3676-832-011-00	STOPPER/CABLE/3	*	1	1						
11	1636-225-230-00	STOPPER COMP	*	1	1						
12	V211-360-802-00	BOLT(SP) M8X20	*	2	2						
13	1720-226-220-00	LEVER/4WD COMP	*	1	1						
14	1636-271-011-00	GRIP/12X60	*	1	1						
15	1720-225-230-10	ARM/4WD COMP	*	1	1						
16	V580-140-602-00	PIN,SPRING	*	1	1						

FIG. 22 4WD CHANGE SYSTEM (EXCEPT X TYPE)



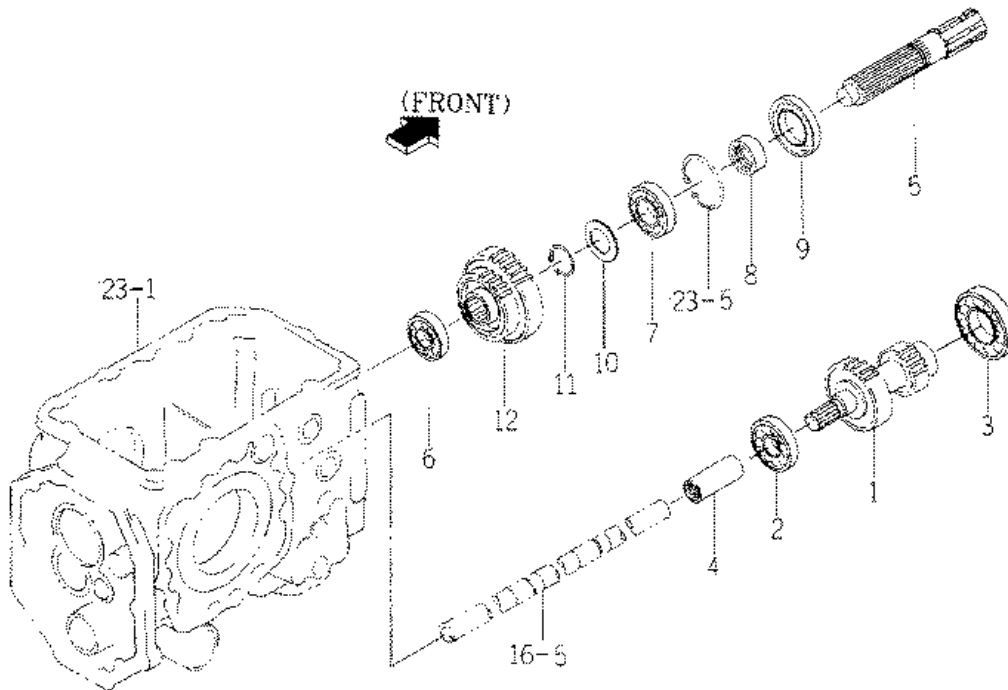
KEY	Part Code	Description	S P C	Type of Model						I T C	C O L	G R P	Remarks
				SF303	SF333								
1	1636-226-310-00	PIN/SHIFT COMP	*	1	1								
2	V720-103-502-40	O-RING/P24	*	1	1								
3	1636-226-011-00	PLATE/SHIFT	*	1	1								
4	V210-360-601-60	BOLT(SP)/M6X16	*	2	2								
5	1550-531-302-00	ARM/B	*	1	1								
6	V211-260-802-00	BOLT,SEMS (S)	*	1	1								
7	1636-226-031-00	SPRING/HT040	*	1	1								
8	1636-226-300-00	CABLE/4WD/LOCK	*	1	1								
9	V411-260-008-00	WASHER,PL/M 8	*	2	1								
10	V500-163-002-00	PIN,SPLIT/3 X20	*	1	1								
11	1374-401-001-00	SPRING,CLUTCH	*	1	1								
12	3676-832-011-00	STOPPER/CABLE/3	*	1	1								
13	1636-226-320-00	STOPPER COMP	*	1	1								
14	V211-360-802-00	BOLT(SP) M8X20	*	2	2								
15	1720-226-220-00	LEVER/4WD COMP	*	1	1								
16	1636-271-011-00	GRIP/12X60	*	1	1								
17	1720-226-230-10	ARM/4WD COMP	*	1	1								
18	V580-140-602-00	PIN,SPRING	*	1	1								

FIG. 23 REAR TRANSMISSION CASE SYSTEM



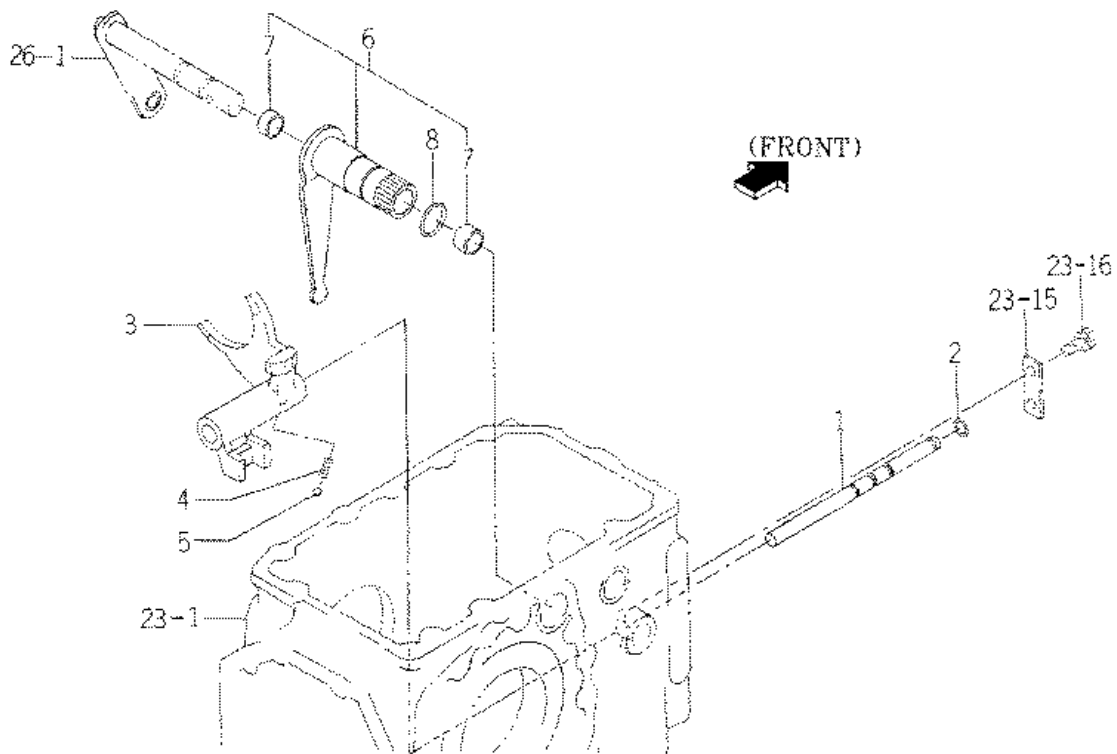
KEY	Part Code	Description	S P C	Type of Model				I T C	C O L	G R P	Remarks
				SF303	SF333						
1	1720-241-001-10	CASE/TRANSMISSION/FR	*	1	1						
2	V523-101-002-40	PIN	*	2	2						
3	V211-661-003-50	BOLT/SP	*	10	10						
4	V707-140-080-00	RING/SNAP	*	1	1						
5	V707-140-062-00	RING/SNAP	*	1	1						
6	V707-140-072-00	RING/SNAP	*	1	1						
7	V251-341-003-00	BOLT/STUD	*	5	5						
8	V251-341-003-0D	BOLT/STUD/SEAL	*	2	2						
9	V251-341-202-50	BOLT/M12X25	*	2	2						
10	1564-201-003-00	CAP/SEAL/47	*	1	1						
11	1617-241-003-00	PLUG/SEAL/80	*	1	1						
12	V782-160-000-8B	PLUG/SCREW/SEAL	*	1	1						
13	1444-314-009-10	CAP,PTO SHAFT	*	1	1						
14	V111-168-001-60	SCREW/M8X16	*	2	2						
15	1614-241-003-00	PLATE/I/19X50	*	1	1						
16	V211-260-801-60	BOLT,SEMS (S) M8X16	*	2	2						
17	1636-241-210-10	PLATE/CASE/REAR COMP	*	1	1						
18	1636-241-005-00	GASKET	*	1	1						
19	V211-561-002-00	BOLT/M10X20	*	11	11						
20	V411-260-010-00	WASHER/M10	*	1	1						
21	1575-306-004-00	GAUGE,OIL	*	1	1						
22	1544-120-009-00	TUBE/300 BX10X300	*	1	1						

FIG. 24 PTO COUNTER GEAR,PTO SHAFT SYSTEM



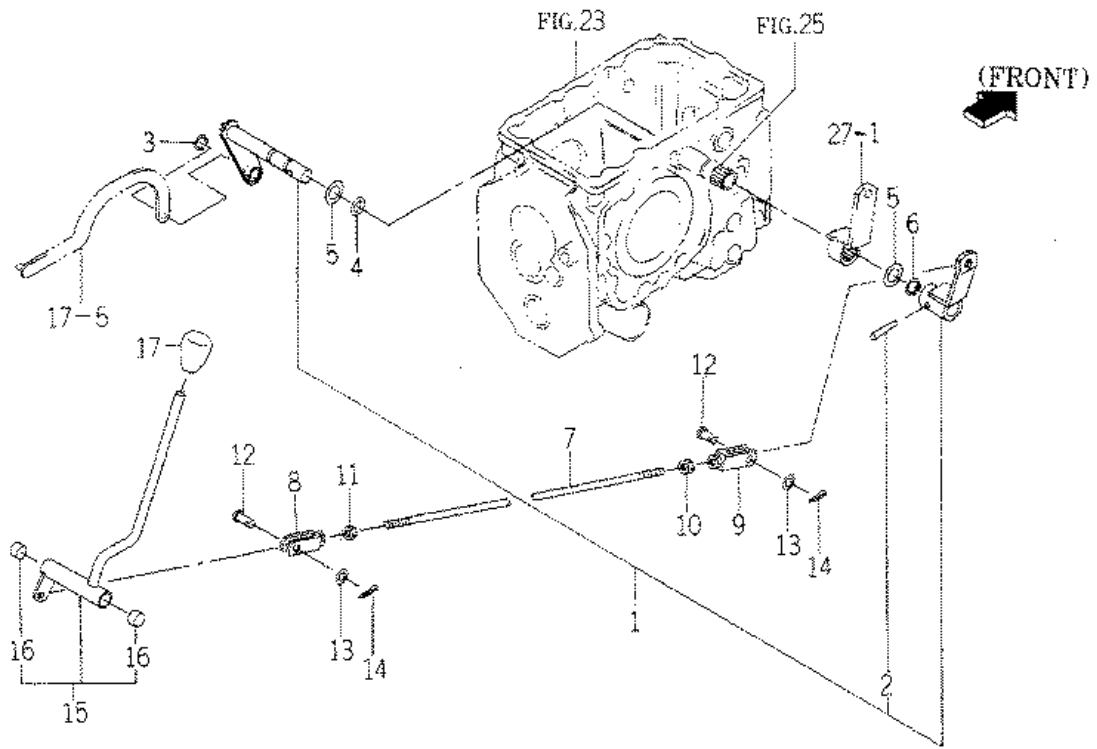
KEY	Part Code	Description	S P C	Type of Model					I T C	C O L	G R P	Remarks
				SF303	SF333							
1	1636-243-001-00	GEAR/SPUR/20-30	*	1	1							
2	V600-110-630-50	BEARING,RB/6305	*	1	1							
3	V600-110-620-80	BEARING,RB/6208	*	1	1							
4	1673-431-001-10	COUPRING/16X27X55	*	1	1							
5	1636-244-002-00	SHAFT/PTO	*	1	1							
6	V600-110-630-40	BEARING,RB/6304	*	1	1							
7	V600-110-620-60	BEARING,RB/6206	*	1	1							
8	1614-244-002-00	SLEEVE	*	1	1							
9	1614-244-005-00	SEAL/OIL	*	1	1							
10	1560-208-018-40	WASHER/30X46X2	*	1	1							
11	V704-140-030-00	RING,SNAP/30 C	*	1	1							
12	1636-244-001-00	GEAR/SPUR/40-30	*	1	1							

FIG. 25 PTO CHANGE SYSTEM



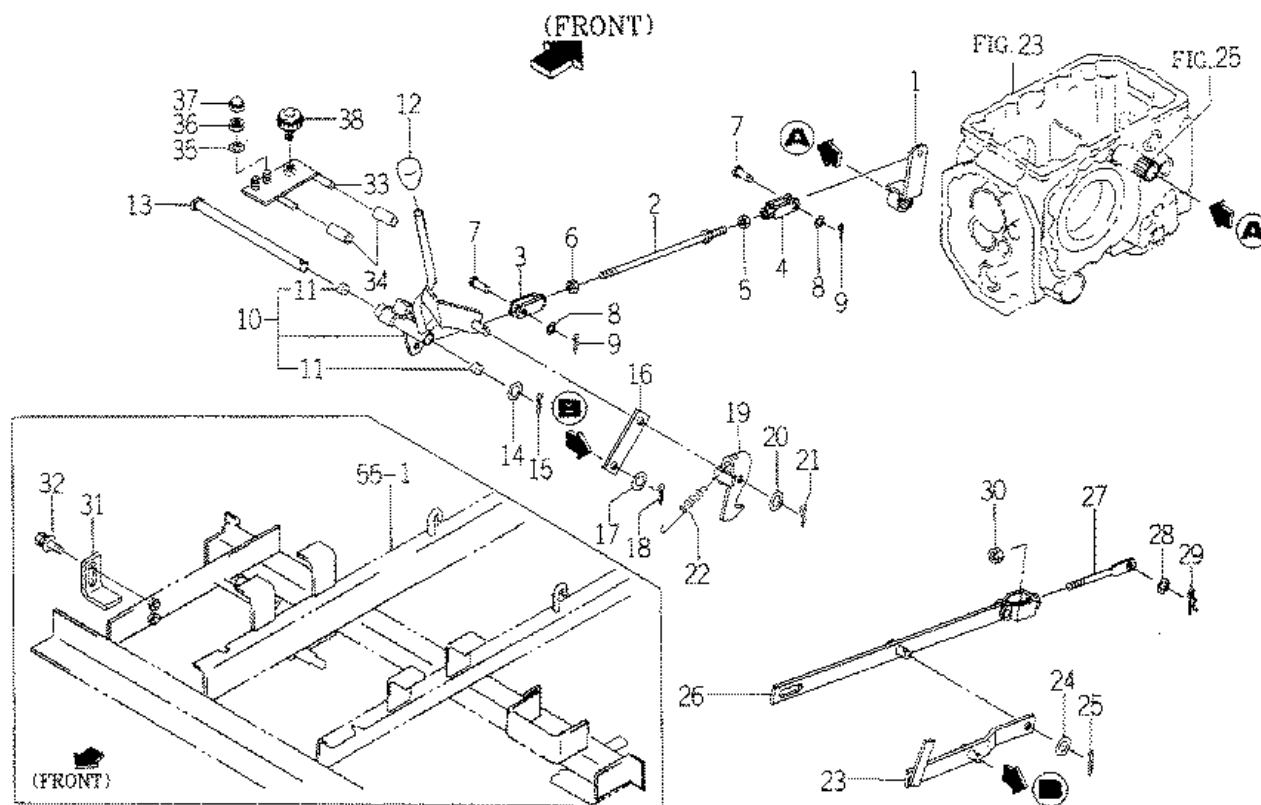
KEY	Part Code	Description	S P C	Type of Model						I T C	C O L	G R P	Remarks
				SF303	SF333								
1	1636-245-001-00	STAY/SHIFT/PTO	*	1	1								
2	V720-102-401-00	O-RING/P10A	*	1	1								
3	1614-245-002-00	FORK/SHIFT/PTO	*	1	1								
4	1302-225-003-00	SPRING,SHIFTER	*	1	1								
5	V682-200-001-00	BALL	*	1	1								
6	1614-245-200-20	ARM/SHIFT/PTO SET	*	1	1								
7	2502-221-236-00	BUSH/18X20X15	*	2	2								
8	1614-245-003-00	ORING	*	1	1								

FIG. 26 CHANGE LEVER (SUB) SYSTEM



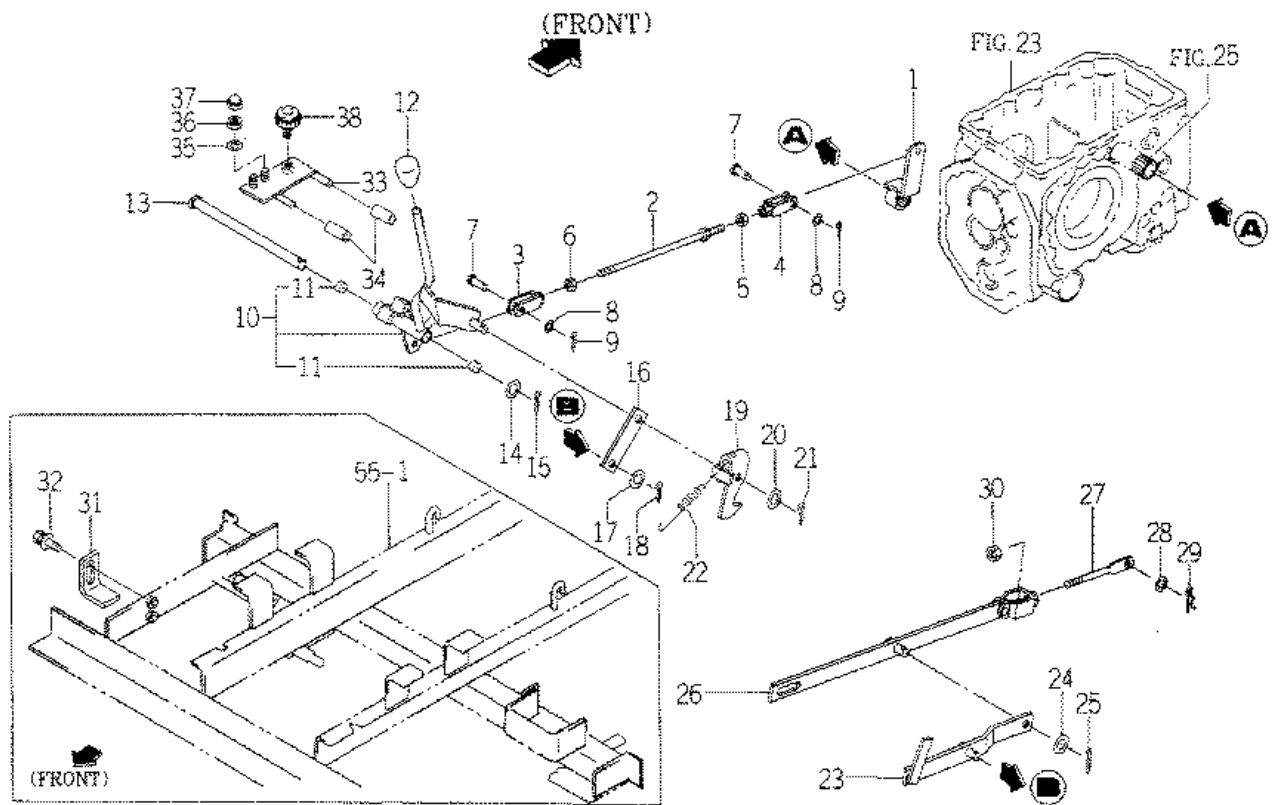
KEY	Part Code	Description	SPC	Type of Model				ITC	COL	GRP	Remarks
				SF303	SF333						
1	1636-262-300-10	ARM/SHIFT/SUB SET	*	1	1						
2	1614-216-003-00	PIN/TAPER/06X45	*	1	1						
3	V704-140-010-00	RING,SNAP/10 C	*	1	1						
4	V720-102-401-40	O-RING/P14	*	1	1						
5	V411-260-018-00	WASHER,PL/M18	*	2	2						
6	V704-140-018-00	RING,SNAP/18 C	*	1	1						
7	1480-312-230-10	ROD,BRAKE COMP	*	1	1						
8	1415-312-500-00	YOKE,LH	*	1	1						
9	1415-312-600-00	YOKE,RH	*	1	1						
10	V304-260-008-00	NUT/M 8	*	1	1						
11	1560-132-007-30	NUT/M8	*	1	1						
12	3600-462-003-00	PIN	*	2	2						
13	V411-260-008-00	WASHER,PL/M 8	*	2	2						
14	V500-163-002-00	PIN,SPLIT/3 X20	*	2	2						
15	1636-262-400-00	LEVER/SUB ASSY	*	1	1						
16	3643-420-004-00	BUSH/15X17X10	*	2	2						
17	1636-271-013-00	GRIP/12X50	*	1	1						

FIG. 27 CHANGE LEVER (PTO) SYSTEM



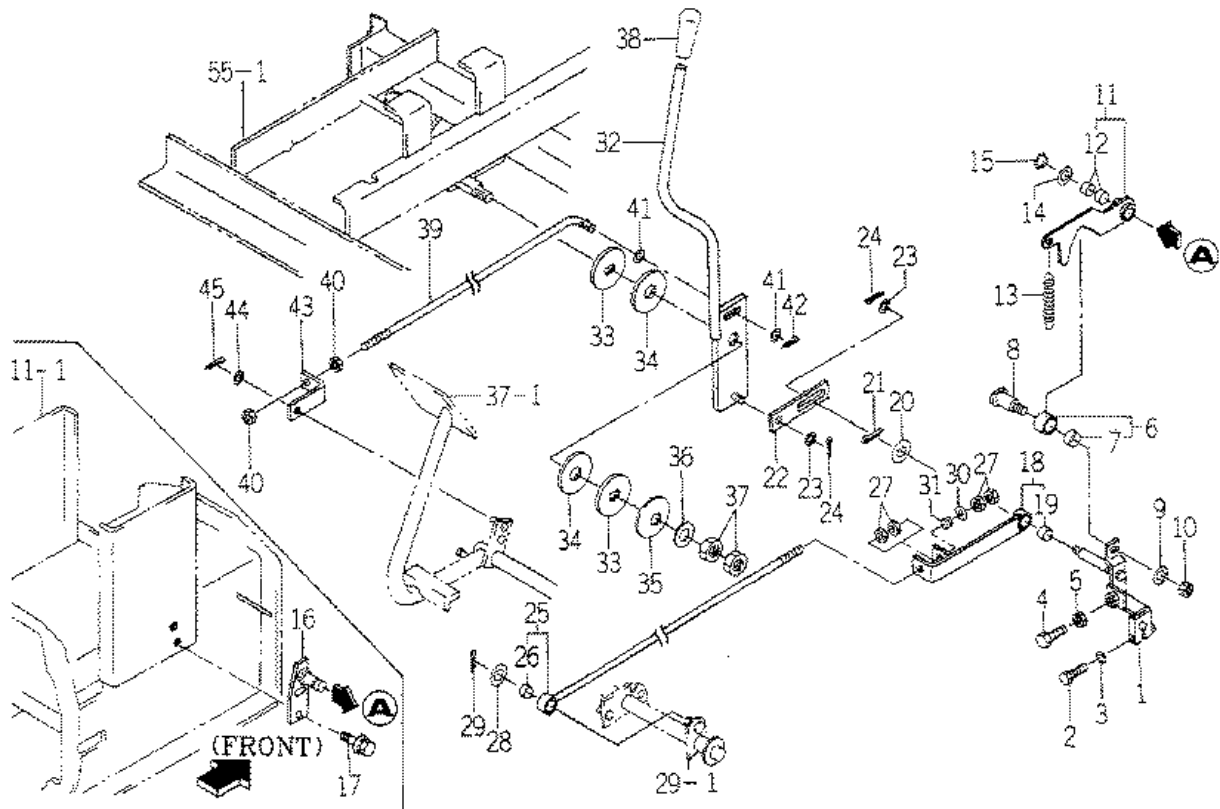
KEY	Part Code	Description	S P C	Type of Model					I T C	C O L	G R P	Remarks
				SF303	SF333							
1	1636-264-210-10	ARM/PTO COMP	*	1	1							
2	1588-515-360-00	ROD	*	1	1							
3	1415-312-500-00	YOKE,LH	*	1	1							
4	1415-312-600-00	YOKE,RH	*	1	1							
5	V304-260-008-00	NUT/M 8	*	1	1							
6	1560-132-007-30	NUT/M8	*	1	1							
7	3600-462-003-00	PIN	*	2	2							
8	V411-260-008-00	WASHER,PL/M 8	*	2	2							
9	V500-163-002-00	PIN,SPLIT/3 X20	*	2	2							
10	1636-264-300-00	LEVER/PTO ASSY	*	1	1							
11	3643-420-004-00	BUSH/15X17X10	*	2	2							
12	1594-285-004-00	GRIP/PTO	*	1	1							
13	1636-264-002-10	PIN/15X238	*	1	1							
14	V411-260-014-00	WASHER,PL/M14	*	1	1							
15	V500-163-002-00	PIN,SPLIT/3 X20	*	1	1							
16	1636-264-003-00	PLATE/I/25X98	*	1	1							
17	V411-260-012-00	WASHER /M12	*	1	1							
18	V500-163-002-00	PIN,SPLIT/3 X20	*	1	1							
19	1636-264-250-10	HOOK COMP	*	1	1							
20	V411-260-012-00	WASHER /M12	*	1	1							
21	V500-163-002-00	PIN,SPLIT/3 X20	*	1	1							
22	1415-120-006-00	SPRING,TENSION/86	*	1	1							
23	1636-264-260-10	ROD/HOOK COMP	*	1	1							
24	V411-260-012-00	WASHER /M12	*	1	1							
25	V500-163-002-00	PIN,SPLIT/3 X20	*	1	1							
26	1636-264-280-00	ROD/BASE COMP	*	1	1							
27	1636-264-004-00	ROD/M08X130	*	1	1							
28	V411-260-008-00	WASHER,PL/M 8	*	1	1							
29	1301-411-005-00	PIN,HAIR	*	1	1							
30	V304-260-008-00	NUT/M 8	*	1	1							

FIG. 27 CHANGE LEVER (PTO) SYSTEM



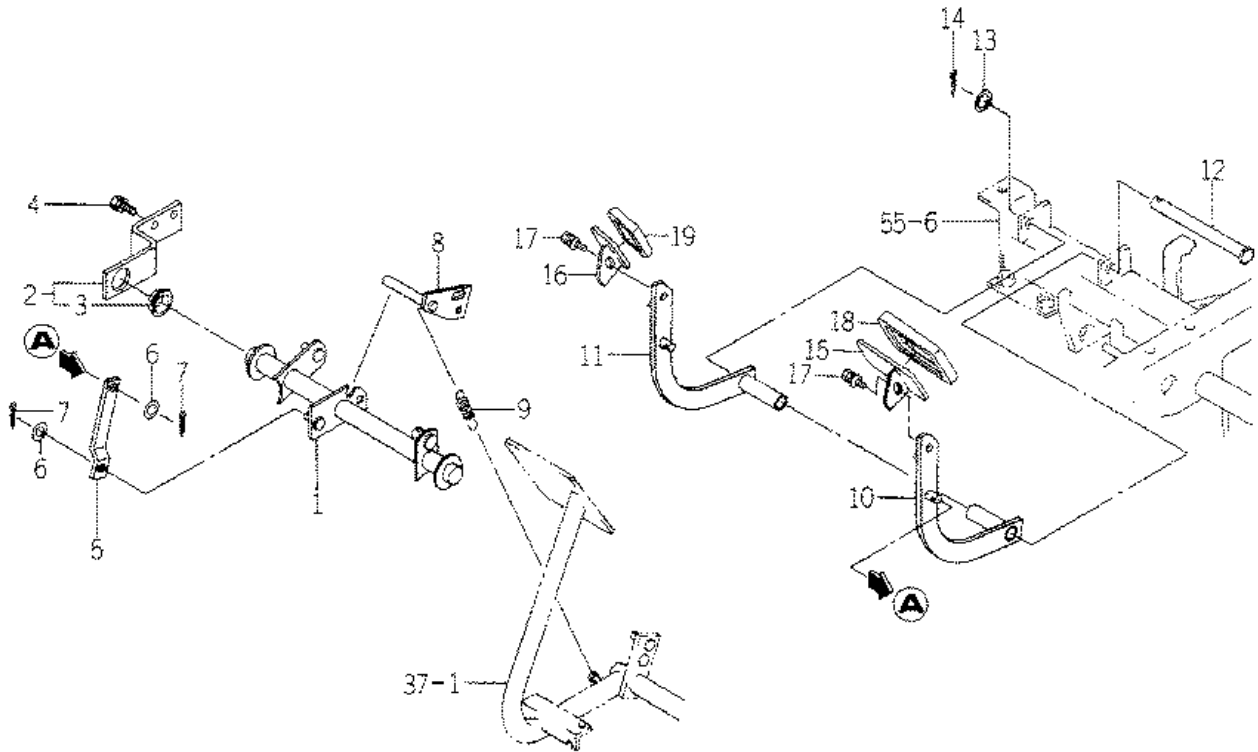
KEY	Part Code	Description	S P C	Type of Model					I T C	C O L	G R P	Remarks
				SF303	SF333							
31	1636-264-005-10	PLATE/L/32X74	*	1	1							
32	V211-360-802-50	BOLT,SEMS	*	2	2							
33	1636-264-270-20	STOPPER COMP	*	1	1							
34	1636-264-009-00	HOSE/35	*	2	2							
35	V411-260-008-00	WASHER,PL/M 8	*	2	2							
36	V304-260-008-00	NUT/M 8	*	2	2							
37	V341-120-008-00	NUT,CAP/M 8	*	2	2							
38	3623-820-013-00	KNOB,SET/12	*	1	1							

FIG. 28 LINK (HST) SYSTEM



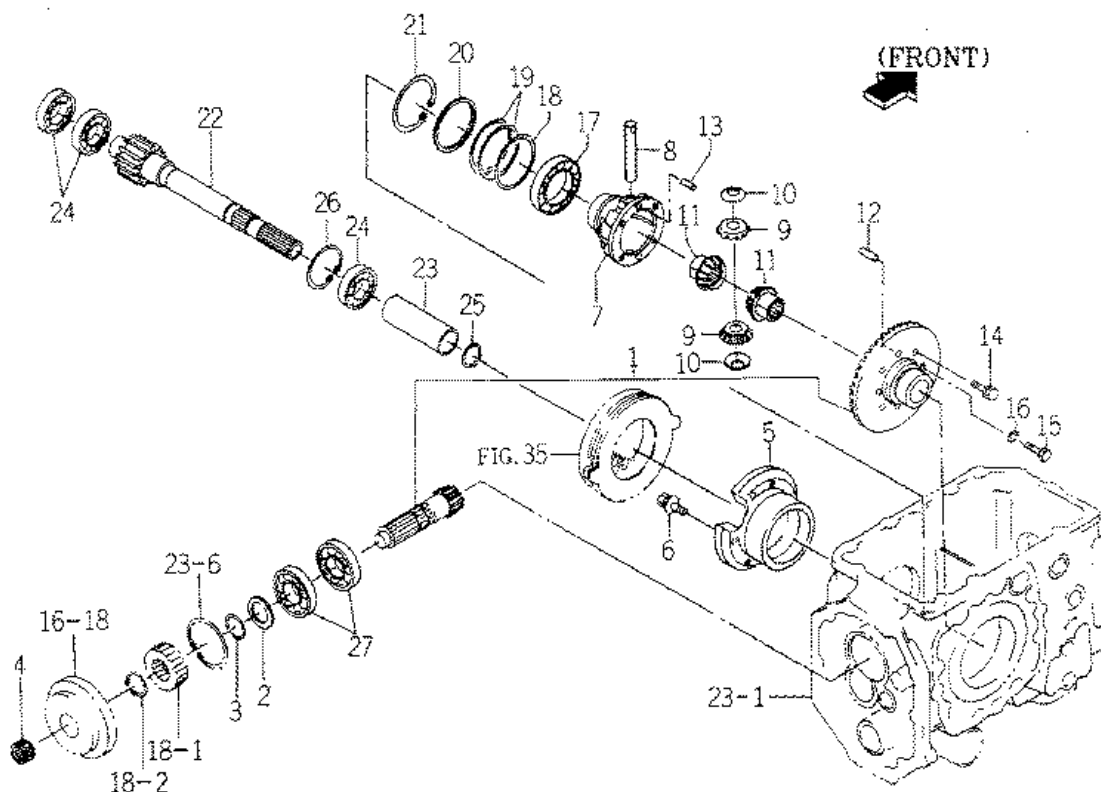
KEY	Part Code	Description	S P C	Type of Model					I T C	C O L	G R P	Remarks
				SF303	SF333							
1	1720-271-210-00	ARM/TRUNNION COMP	*	1	1							
2	V201-361-004-50	BOLT/M10X45	*	1	1							
3	V401-160-010-00	WASHER,SP/M10	*	1	1							
4	V201-260-804-00	BOLT/M 8X40	*	1	1							
5	V304-260-008-00	NUT/M 8	*	1	1							
6	1636-271-350-00	ROLLER/HST ASSY	*	1	1							
7	1636-271-351-00	BUSH/16X18X15	*	1	1							
8	3650-354-004-00	PIN/16X44	*	1	1							
9	V401-160-010-00	WASHER,SP/M10	*	1	1							
10	V304-260-010-00	NUT	*	1	1							
11	1636-271-280-00	ARM/NEUTRAL ASSY	*	1	1							
12	3656-115-002-00	BUSH/12X14X10	*	2	2							
13	1104-410-007-00	SPRING/HE074	*	1	1							
14	V411-260-012-00	WASHER /M12	*	1	1							
15	V704-140-012-00	RING,SNAP/12 C	*	1	1							
16	1720-271-220-00	PLATE/ADJUST COMP	*	1	1							
17	V211-360-802-00	BOLT(SP) M8X20	*	2	2							
18	1636-271-290-10	PLATE/L/22X170 ASSY	*	1	1							
19	3656-115-002-00	BUSH/12X14X10	*	1	1							
20	V411-260-012-00	WASHER /M12	*	1	1							
21	V500-163-002-00	PIN,SPLIT/3 X20	*	1	1							
22	1720-271-001-00	PLATE/I/25X114	*	1	1							
23	V411-260-008-00	WASHER,PL/M 8	*	2	2							
24	V500-163-002-00	PIN,SPLIT/3 X20	*	2	2							
25	1720-271-240-00	ROD/HST/L ASSY	*	1	1							
26	3656-115-002-00	BUSH/12X14X10	*	1	1							
27	V304-260-010-00	NUT	*	4	4							
28	V411-260-012-00	WASHER /M12	*	1	1							
29	V500-163-002-00	PIN,SPLIT/3 X20	*	1	1							
30	V411-260-010-00	WASHER/M10	*	1	1							

FIG. 29 PEDAL (HST) SYSTEM



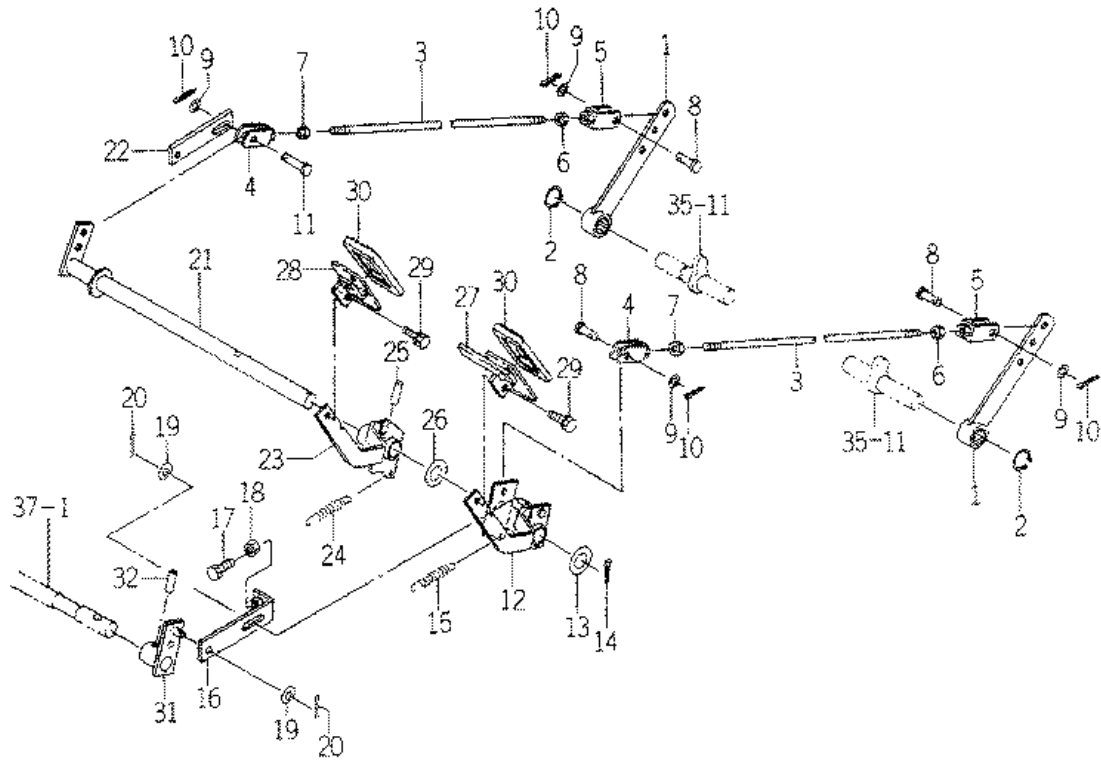
KEY	Part Code	Description	S P C	Type of Model					I T C	C O L	G R P	Remarks
				SF303	SF333							
1	1720-272-220-00	PIVOT/HST/L COMP	*	1	1							
2	1720-272-270-00	PLATE/Z/32X150 ASSY	*	1	1							
3	1636-272-271-00	BUSH/20X23X10	*	1	1							
4	V211-260-802-00	BOLT,SEMS (S)	*	2	2							
5	1636-272-003-10	ROD/PEDAL	*	2	2							
6	V411-260-008-00	WASHER,PL/M 8	*	6	6							
7	V500-163-002-00	PIN,SPLIT/3 X20	*	4	4							
8	1636-272-230-10	PLATE/HSTLOCK COMP	*	1	1							
9	1414-312-002-00	SPRING,TENSION/53	*	1	1							
10	1720-272-240-00	PEDAL/HST/LH COMP	*	1	1							
11	1720-272-250-00	PEDAL/HST/RH COMP	*	1	1							
12	1636-272-004-10	PIN/12X139	*	1	1							
13	V411-260-012-00	WASHER /M12	*	1	1							
14	V500-163-002-00	PIN,SPLIT/3 X20	*	1	1							
15	1689-272-260-00	PEDAL/HST/F COMP	*	1	1							
16	1689-272-240-00	PEDAL/HST/RH COMP	*	1	1							
17	V211-360-801-60	BOLT,SEMS (SP)	*	2	2							
18	1608-207-014-00	PAD (HST)	*	1	1							
19	1620-272-051-00	PAD	*	1	1							

FIG. 31 DRIVE PINION (HST),CASE (DIFF) SYSTEM



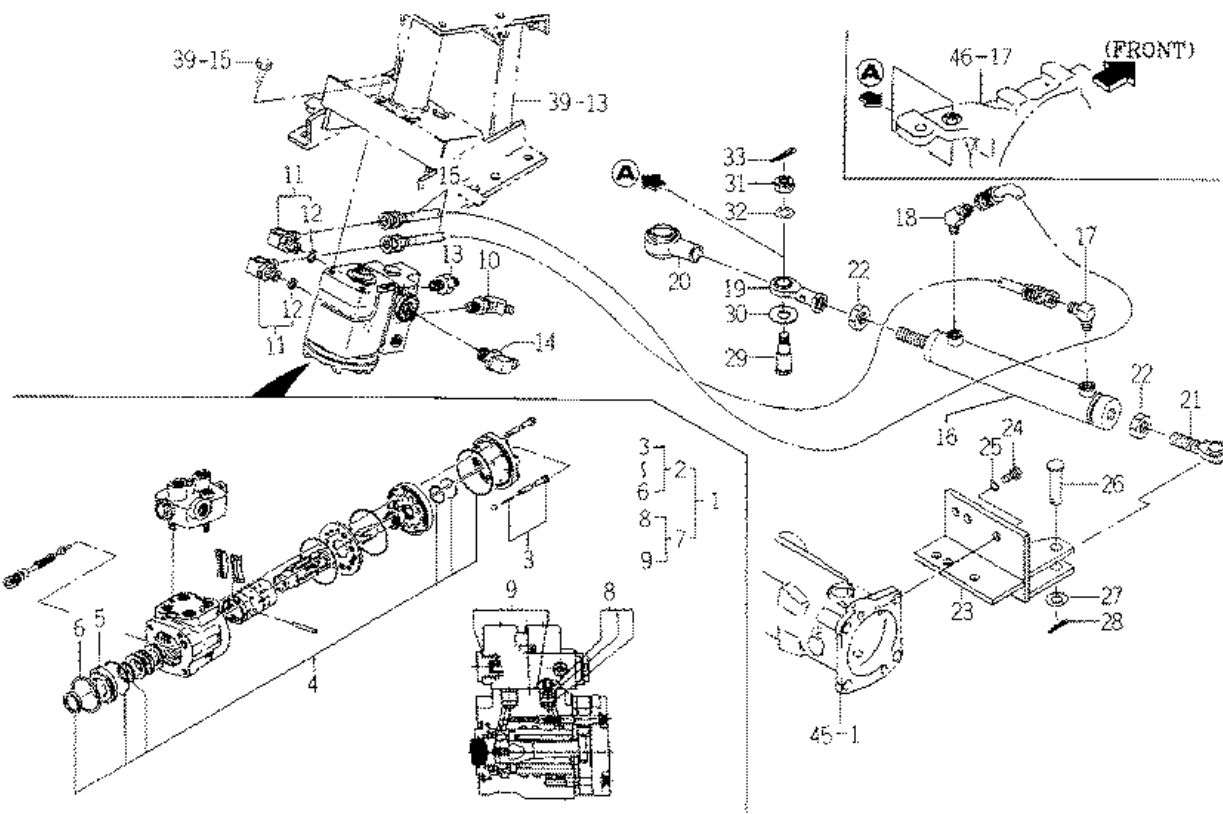
KEY	Part Code	Description	S P C	Type of Model				I T C	C O L	G R P	Remarks
				SF303	SF333						
1	1636-301-300-00	GEAR/07-38SET	*	1	1						
2	1560-208-018-40	WASHER/30X46X2	*	1	1						
3	1617-301-002-00	CIRCLIP/30	*	1	1						
4	V653-420-261-60	BEARING	*	1	1						
5	1614-304-001-00	METAL/DIFF	*	1	1						
6	V211-360-802-50	BOLT,SEMS	*	4	4						
7	1636-304-005-00	CASE/DIFF	*	1	1						
8	1444-411-006-00	SHAFT,DIFF. PINION	*	1	1						
9	1614-304-003-00	GEAR/BEVEL/12	*	2	2						
10	1614-304-014-00	WASHER	*	2	2						
11	1614-304-005-10	GEAR/BEVEL/14	*	2	2						
12	1672-301-002-00	PIN	*	1	1						
13	V523-100-801-60	PIN	*	1	1						
14	V211-560-802-50	BOLT,SEMS/M8X25 7T	*	4	4						
15	1636-304-004-00	BOLT/REAMER/M8X27	*	2	2						
16	V401-160-008-00	WASHER,SP/M 8	*	2	2						
17	V600-110-601-00	BEARING,RB/6010	*	2	2						
18	1614-304-006-00	SHIM/0.2	*	2	2						
19	1614-304-007-00	SHIM/0.1	*	4	4						
20	1614-304-008-00	WASHER/68X80X02	*	2	2						
21	V707-140-080-00	RING/SNAP	*	2	2						
22	1636-304-002-00	GEAR/SPUR/15	*	2	2						
23	1636-304-003-00	HUB/31X38X110	*	2	2						
24	V600-110-620-60	BEARING,RB/6206	*	6	6						
25	V704-140-030-00	RING,SNAP/30 C	*	2	2						
26	V707-140-062-00	RING/SNAP	*	2	2						
27	7932-201-002-00	BEARING,RB/6306SH2	*	2	2						

FIG. 36 PEDAL (BRAKE) SYSTEM



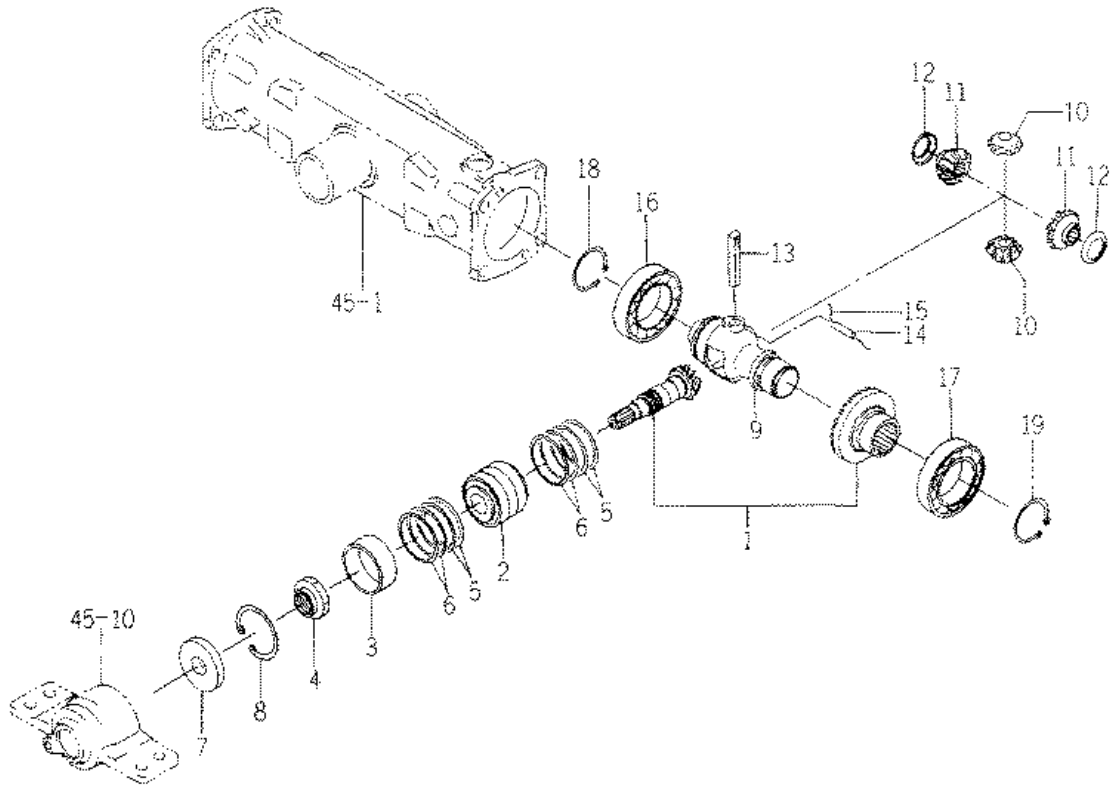
KEY	Part Code	Description	S P C	Type of Model					I T C	C O L	G R P	Remarks
				SF303	SF333							
1	1636-312-210-00	LINK/BRAKE COMP	*	2	2							
2	V704-140-022-00	RING,SNAP/22 C	*	2	2							
3	1480-312-230-10	ROD,BRAKE COMP	*	2	2							
4	1415-312-500-00	YOKE,LH	*	2	2							
5	1415-312-600-00	YOKE,RH	*	2	2							
6	V304-260-008-00	NUT/M 8	*	2	2							
7	1560-132-007-30	NUT/M8	*	2	2							
8	3600-462-003-00	PIN	*	3	3							
9	V411-260-008-00	WASHER,PL/M 8	*	4	4							
10	V500-163-002-00	PIN,SPLIT/3 X20	*	4	4							
11	1593-606-006-10	PIN/8X36	*	1	1							
12	1720-312-230-20	ARM/BRAKE/LH COMP	*	1	1							
13	V411-260-020-00	WASHER/M20	*	1	1							
14	V500-164-003-00	PIN,SPLIT/4 X30	*	1	1							
15	1426-621-018-00	SPRING,TENSION	*	1	1							
16	1720-312-280-00	PLATE/MASTER COMP	*	1	1							
17	V201-260-804-00	BOLT/M 8X40	*	1	1							
18	V304-260-008-00	NUT/M 8	*	1	1							
19	V411-260-008-00	WASHER,PL/M 8	*	2	2							
20	V500-163-002-00	PIN,SPLIT/3 X20	*	2	2							
21	1720-312-260-10	PIN/BRAKE COMP	*	1	1							
22	1636-312-001-00	PLATE/I/22X118	*	1	1							
23	1720-312-240-00	ARM/BRAKE/RH COMP	*	1	1							
24	1426-621-018-00	SPRING,TENSION	*	1	1							
25	V530-160-803-20	PIN	*	1	1							
26	V411-260-020-00	WASHER/M20	*	1	1							
27	1636-312-290-00	PEDAL/BRAKE/LH COMP	*	1	1							
28	1636-312-250-10	PEDAL/BRAKE/RH COMP	*	1	1							
29	V211-260-801-60	BOLT,SEMS (S) M8X16	*	2	2							
30	1608-207-014-00	PAD (HST)	*	2	2							

FIG. 41 STEERING (UNIT) SYSTEM



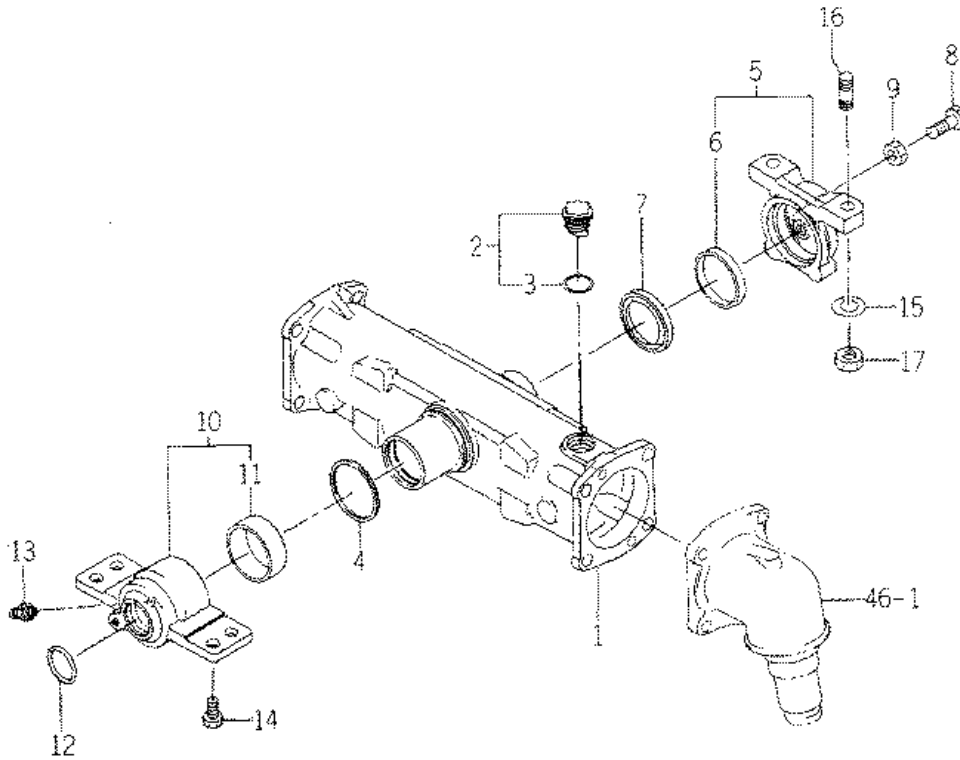
KEY	Part Code	Description	S P C	Type of Model				I T C	C O L	G R P	Remarks
				SF303	SF333						
1	1720-407-200-00	UNIT/STERRING/L ASSY	*	1	1						
2	1636-407-400-00	ORBITROLL ASSY	*	1	1						
3	1636-407-410-00	RETAINER/BOLT ASSY	*	1	1						
4	1636-407-420-10	SEAL/ORBITROLL SET	*	1	1						
5	1636-407-401-00	BUSH/SEAL	*	1	1						
6	1636-407-402-00	RETAINING/RING	*	1	1						
7	1720-407-500-00	VALVE/VD/L ASSY	*	1	1						
8	1636-407-510-00	ORIFICE/CHECK ASSY	*	1	1						
9	1636-407-520-00	SEAL/VD SET	*	1	1						
10	1636-407-004-00	ADAPTER/45 ASSY	*	1	1						
11	P103-521-006-10	ELBOW/90 ASSY	*	2	2						
12	V720-112-401-40	O-RING/P14	*	2	2						
13	3631-353-008-10	ADAPTER,S HIGH PRESS	*	1	1						
14	1689-502-250-00	ADAPTER/L/G3/8 ASSY	*	1	1						
15	3650-375-200-00	HOSE/HYDRAULIC/2150	*	2	2						
16	K185-038-000-30	CYLINDER ASSY	*	1	1					068	
17	3768-185-022-10	ADAPTER(90/PUMP)	*	1	1						
18	3631-350-201-10	ADAPTER/45	*	1	1						
19	1636-407-001-00	JOINT/BALL	*	1	1						
20	3650-432-012-00	BOOT/16	*	1	1						
21	1636-407-002-00	JOINT/BALL	*	1	1						
22	V304-260-016-00	NUT/M16	*	2	2						
23	1636-407-210-30	BRACKET/CYLINDE COMP	*	1	1						
24	V201-361-203-00	BOLT/M12X30	*	4	4						
25	V401-160-012-00	WASHER,SP/M12	*	4	4						
26	3652-376-001-00	PIN/16X53	*	1	1						
27	V411-260-016-00	WASHER / M16	*	3	3						
28	V500-163-003-00	PIN,SPLIT/3X30	*	1	1						
29	1636-407-003-10	PIN/16X62	*	1	1						
30	8654-510-012-10	WASHER/16X40X05	*	1	1						

FIG. 44 BEVEL CASE SYSTEM



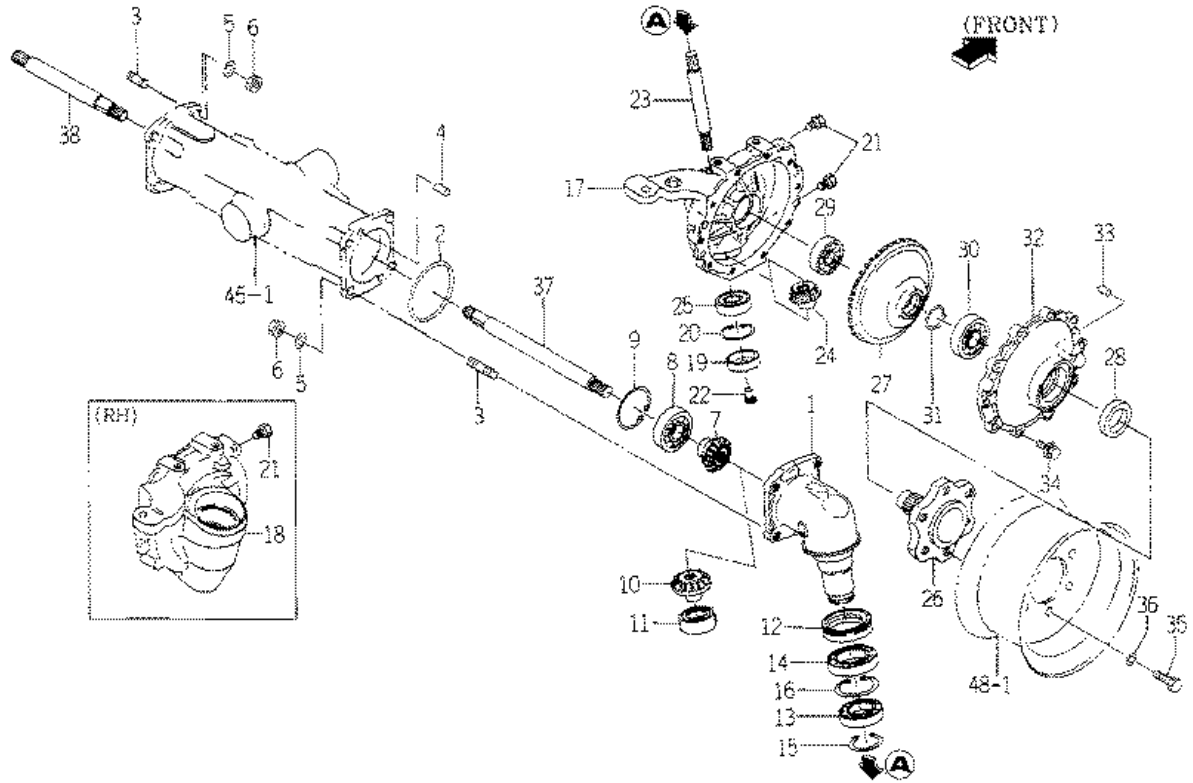
KEY	Part Code	Description	S P C	Type of Model					I T C	C O L	G R P	Remarks
				SF303	SF333							
1	1614-432-200-00	GEAR/08-20 SET	*	1	1							
2	1614-432-210-10	BEARING/TAPERROLLER	*	1	1							
3	1650-432-001-00	COLLAR/48X52X17	*	1	1							
4	1614-432-001-00	NUT/M25	*	1	1							
5	1444-411-012-00	SHIM (C)	*	4	4							
6	1444-411-013-00	SHIM D T=0.1	*	4	4							
7	1427-432-016-00	SEAL,OIL/21	*	1	1							
8	V705-140-052-00	RING,SNAP/52 C	*	1	1							
9	1614-432-002-00	CASE/DIFF	*	1	1							
10	1614-432-003-00	PINION/BEVEL/11	*	2	2							
11	1614-432-004-00	GEAR/BEVEL/15	*	2	2							
12	1614-432-005-00	WASHER	*	2	2							
13	1614-432-006-00	PIN/12X75	*	1	1							
14	V580-140-502-50	PIN,SPRING/5 X25 W	*	1	1							
15		WIRE	*	1	1							
16	V600-110-601-10	BEARING,RB/6011	*	1	1							
17	V600-110-601-00	BEARING,RB/6010	*	1	1							
18	V706-140-055-00	RING/SNAP	*	1	1							
19	V706-140-040-00	RING/SNAP	*	1	1							

FIG. 45 AXLE HOUSING SYSTEM



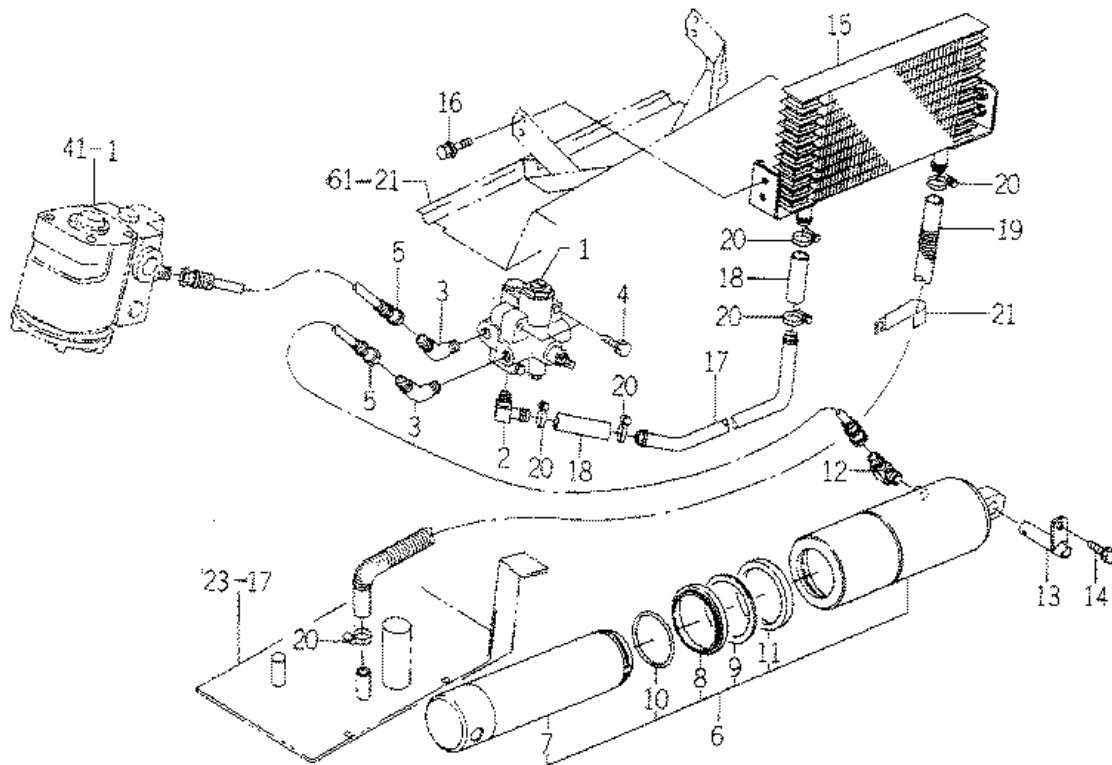
KEY	Part Code	Description	S P C	Type of Model				I T C	C O L	G R P	Remarks
				SF303	SF333						
1	1636-433-002-10	HOUSING/AXLE	*	1	1						
2	1518-432-250-00	CAP,OIL ASSY	*	1	1						
3	1518-306-203-00	PACKING	*	1	1						
4	V721-103-107-00	O-RING/G70	*	1	1						
5	1614-433-200-00	METAL/PIVOT/FRONT	*	1	1						
6	1614-433-202-00	BUSH/62X67X15	*	1	1						
7	1614-433-002-00	SEAL/OIL	*	1	1						
8	V201-261-203-50	BOLT/M12X35	*	1	1						
9	V304-260-012-00	NUT/M12	*	1	1						
10	1636-433-220-00	METAL/PIVOT/FRONT	*	1	1						
11	1614-433-212-00	BUSH/62X67X30	*	1	1						
12	V720-103-503-80	O-RING/P38	*	1	1						
13	V761-150-000-00	NIPPLE/GREASE	*	1	1						
14	V201-361-403-50	BOLT	*	4	4						
15	V401-160-014-00	WASHER,SP/M14	*	6	6						
16	V251-441-403-50	STUD/M14X35	*	2	2						
17	V304-460-014-00	NUT/M14	*	2	2						

**FIG. 46 FINAL GEAR CASE,
 FINAL DRIVE SHAFT SYSTEM**



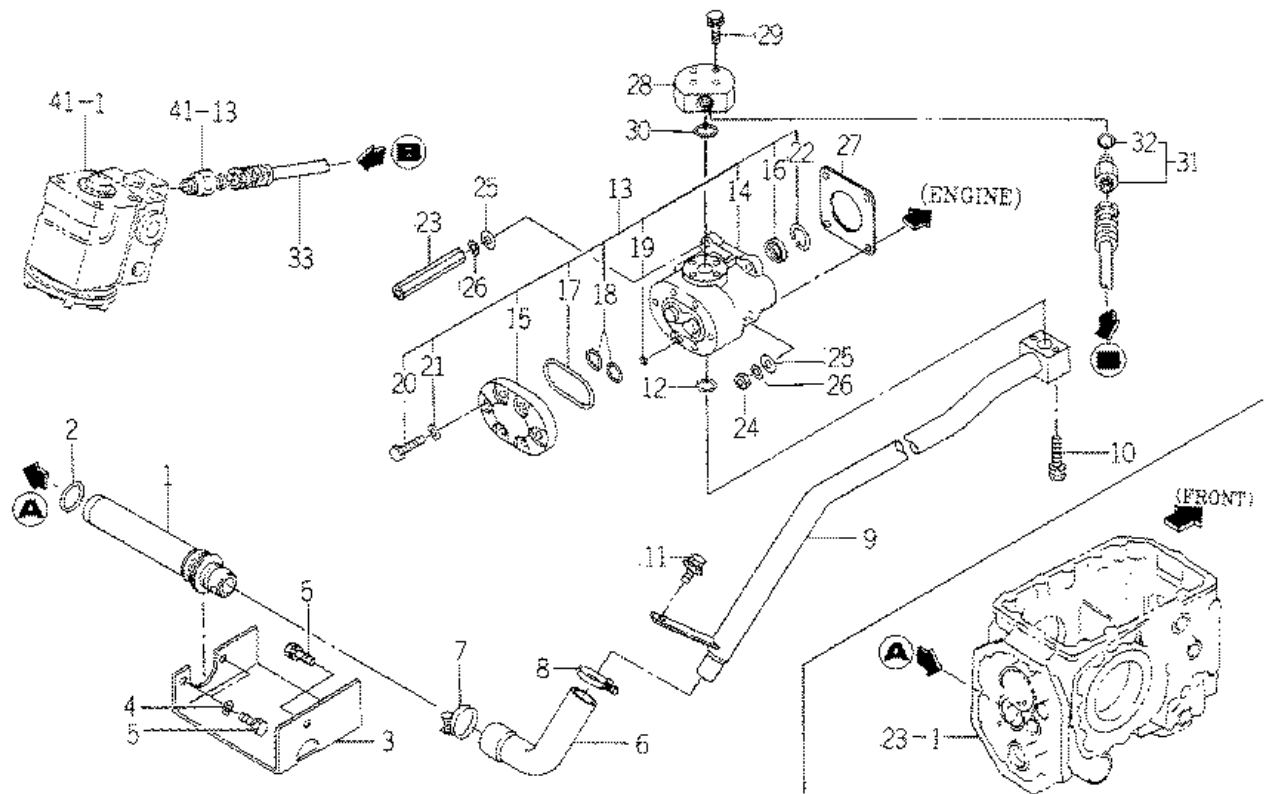
KEY	Part Code	Description	S P C	Type of Model						I T C	C O L	G R P	Remarks
				SF303	SF333								
1	1636-434-004-20	CASE/FINAL	*	2	2								
2	V721-103-110-00	O-RING/G100	*	2	2								
3	V251-441-202-80	STUD/M12X28	*	8	8								
4	V523-101-002-40	PIN	*	4	4								
5	V401-160-012-00	WASHER,SP/M12	*	8	8								
6	V304-460-012-00	NUT/M12	*	8	8								
7	1636-434-002-00	GEAR/BEVEL/15	*	2	2								
8	V600-110-630-60	BEARING,RB/6306	*	2	2								
9	V707-140-072-00	RING/SNAP	*	2	2								
10	1636-434-003-00	GEAR/BEVEL/14	*	2	2								
11	1594-221-001-00	BEARING/BALL 6205SH2	*	2	2								
12	1614-434-004-00	SEAL/OIL ASSY	*	2	2								
13	V600-110-690-90	BEARING	*	2	2								
14	V600-110-691-10	BEARING	*	2	2								
15	V706-140-045-00	RING/SNAP	*	2	2								
16	V707-140-068-00	RING/SNAP	*	2	2								
17	1620-434-003-00	CASE/FINAL/LH	*	1	1								
18	1620-434-004-00	CASE/FINAL/RH	*	1	1								
19	1421-201-003-00	SEAL/52	*	2	2								
20	V705-140-052-00	RING,SNAP/52 C	*	2	2								
21	V782-160-000-4B	PLUG/SCREW/SEAL	*	4	4								
22	1427-120-002-00	CAP,BLANK/M10	*	4	4								
23	1614-434-007-00	SHAFT	*	2	2								
24	1614-434-008-10	GEAR/BEVEL/10	*	2	2								
25	1594-221-001-00	BEARING/BALL 6205SH2	*	2	2								
26	1614-434-009-00	SHAFT/WHEEL	*	2	2								
27	1614-434-011-10	GEAR/BEVEL/48	*	2	2								
28	1480-434-011-10	SEAL,OIL	*	2	2								
29	V600-110-620-60	BEARING,RB/6206	*	2	2								
30	V600-110-620-70	BEARING,RB/6207	*	2	2								

FIG. 50 CONTROL VALVE SYSTEM



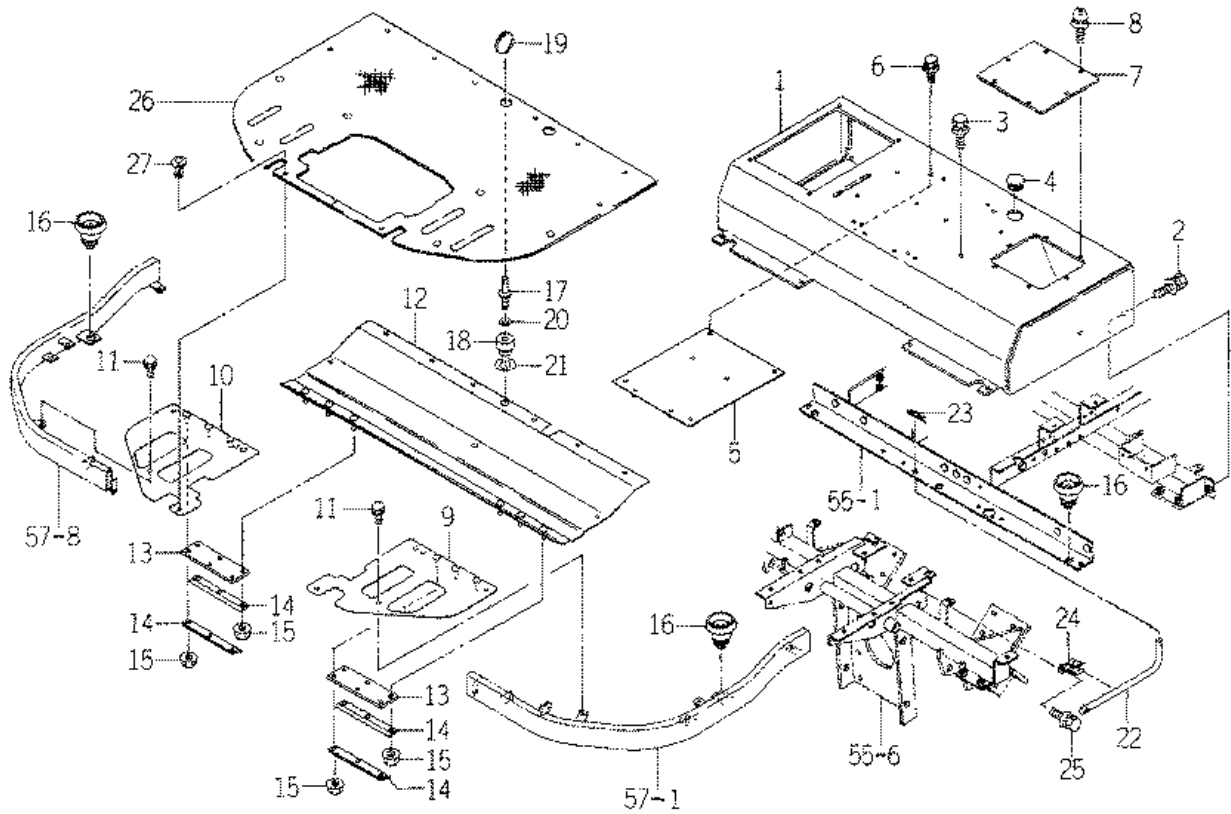
KEY	Part Code	Description	S P C	Type of Model					I T C	C O L	G R P	Remarks
				SF303	SF333							
1	K216-012-000-00	ROTARY VALVE	*	1	1						069	
2	3676-352-002-00	ADAPTOR/3X8	*	1	1							
3	3631-350-201-10	ADAPTER/45	*	2	2							
4	V211-260-804-00	BOLT,SEMS	*	2	2							
5	3650-837-240-00	HOSE/HYDRAULIC/1100	*	2	2							
6	K182-044-000-00	CYLINDER ASSY	*	1	1							
7	K182-044-001-00	PISTON	*	1	1							
8	K182-029-002-00	PISTON STOPPER	*	1	1							
9	V793-155-650-90	SEAL/DUST	*	1	1							
10	V724-126-905-50	PACKING/ROD	*	1	1							
11	V730-106-505-50	RING/BACKUP	*	1	1							
12	3768-185-022-10	ADAPTER(90/PUMP)	*	1	1							
13	1636-503-270-00	PIN/16X60 COMP	*	1	1							
14	V211-260-802-00	BOLT,SEMS (S)	*	1	1							
15	1636-503-210-00	COOLER/OIL COMP	*	1	1							
16	V211-360-802-00	BOLT(SP) M8X20	*	4	4							
17	1720-503-002-00	PIPE/COOLER/L	*	1	1							
18	1435-201-012-10	HOSE/70	*	2	2							
19	3650-354-001-10	HOSE,LOW PRESS	*	1	1							
20	J061-116-025-00	CLAMP/WORM/16-25	*	6	6							
21	3805-650-002-00	HOLDER/09	*	1	1							

FIG. 52 PIPING (MAIN) SYSTEM



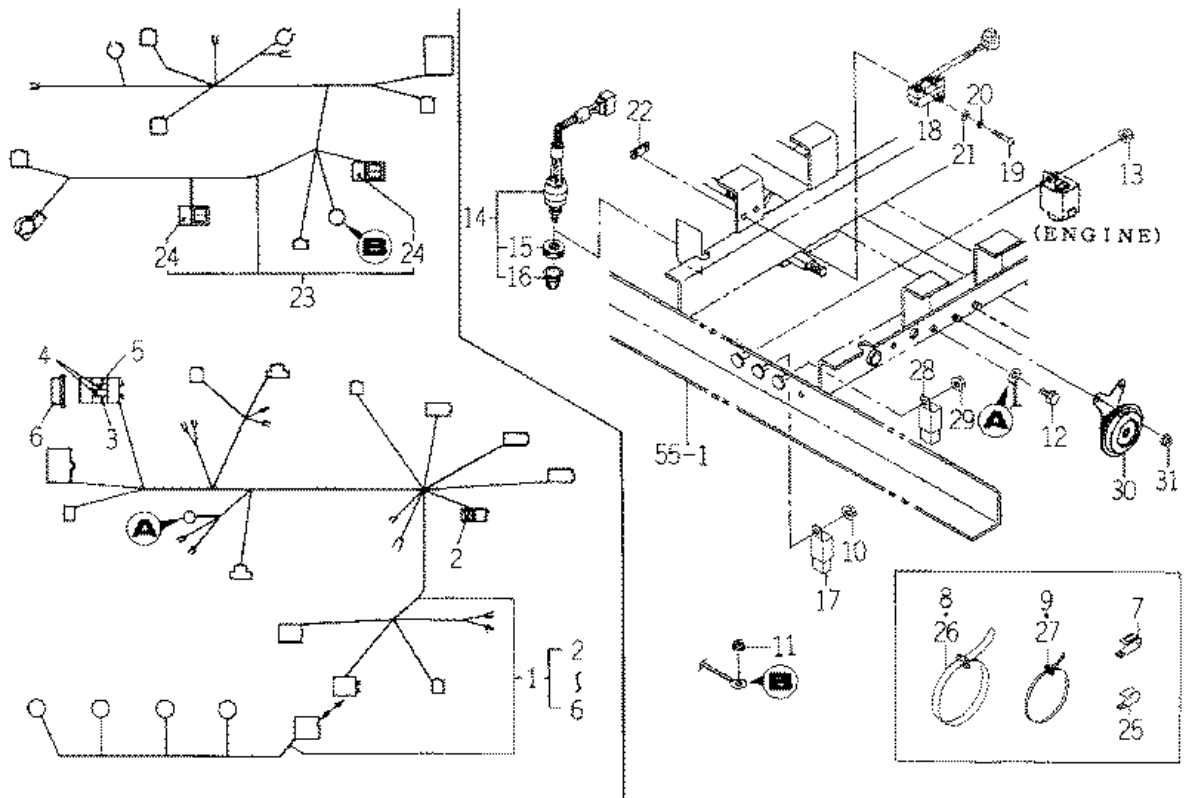
KEY	Part Code	Description	S P C	Type of Model					I T C	C O L	G R P	Remarks
				SF303	SF333							
1	1614-508-200-00	FILTER/SUCTION ASSY	*	1	1							
2	V721-103-103-50	O-RING/G35	*	1	1							
3	1636-508-001-00	COVER/SUCTION	*	1	1							
4	3659-170-003-00	WASHER/11X30X3	*	2	2							
5	V211-261-002-00	BOLT,SEMS	*	3	3							
6	1603-508-001-00	HOSE,SUCTION	*	1	1							
7	J061-232-040-00	CLAMP/WIRE/32-40	*	1	1							
8	J061-228-036-00	CLAMP/WIRE/28-36	*	1	1							
9	1636-508-210-00	PIPE/SUCTION COMP	*	1	1							
10	V210-260-605-00	BOLT/S	*	2	2							
11	V211-361-002-00	BOLT/SP	*	1	2							
12	V720-112-402-00	O-RING/P20	*	1	1							
13	K135-028-000-00	PUMP/GEAR ASSY	*	1	1							
14	K135-028-100-10	PUMP SET	*	1	1							
15	K135-017-006-00	COVER,PUMP	*	1	1							
16	V744-114-280-70	SEAL,OIL	*	1	1							
17	V721-113-105-00	O-RING HS90 G50	*	1	1							
18	V720-112-402-20	O-RING/P22	*	4	4							
19	V720-111-900-60	O-RING P6 HS90	*	1	1							
20	K135-002-009-00	BOLT/M8X28 11T	*	6	6							
21	V401-170-008-00	S.W	*	6	6							
22	V705-140-028-00	RING,SNAP/28 C	*	1	1							
23	1560-515-004-50	NUT/M08	*	2	2							
24	V304-260-008-00	NUT/M 8	*	2	2							
25	V411-260-008-00	WASHER,PL/M 8	*	4	4							
26	V401-160-008-00	WASHER,SP/M 8	*	4	4							
27	1404-503-006-00	PACKING,OIL PUMP	*	1	1							
28	1720-508-001-10	FLANGE	*	1	1							
29	V210-260-603-50	BOLT/M6X35	*	4	4							
30	V720-112-402-00	O-RING/P20	*	1	1							

FIG. 56 STEP,FENDER SYSTEM



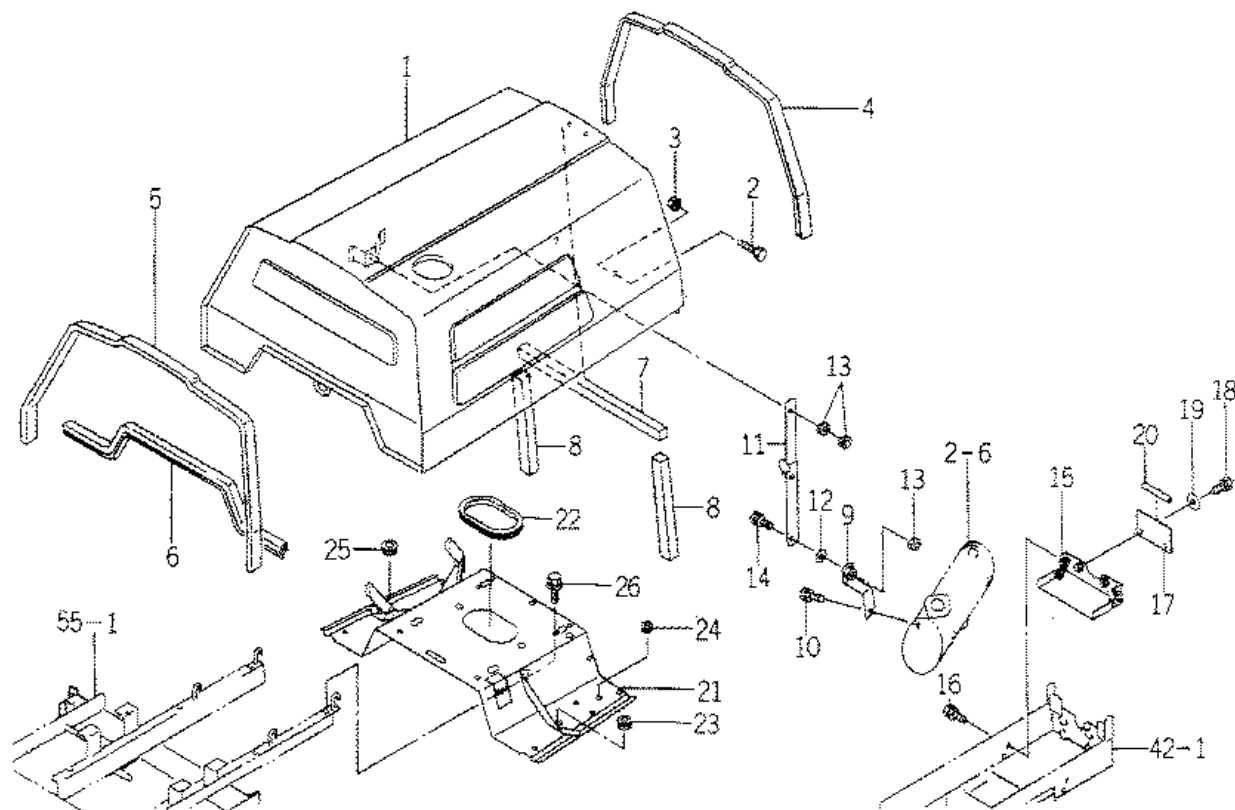
KEY	Part Code	Description	S P C	Type of Model						I T C	C O L	G R P	Remarks
				SF303	SF333								
1	1636-611-450-11	PLATE/SEAT COMP	*	1	1						4L		
2	V211-360-801-60	BOLT,SEMS (SP)	*	6	6								
3	V211-360-803-00	BOLT/M8X30	*	4	4								
4	1560-630-021-50	INSULATOR	*	1	1								
5	1636-611-440-00	PLATE/SEAT/UNDE COMP	*	1	1								
6	V211-360-801-60	BOLT,SEMS (SP)	*	4	4								
7	1636-611-003-01	PLATE/I/180X220	*	1	1						4L		
8	V120-376-001-60	SCREW/SP	*	6	6								
9	1720-611-250-10	STEP/FRONT/LH COMP	*	1	1						7F		
10	1720-611-260-10	STEP/FRONT/RH COMP	*	1	1						7F		
11	V211-260-801-60	BOLT,SEMS (S) M8X16	*	6	6								
12	1720-611-270-10	STEP/REAR COMP	*	1	1						7F		
13	1636-611-005-10	PLATE/I/60X180	*	2	2								
14	1636-611-004-10	PLATE/L/180X19	*	4	4								
15	V360-260-006-00	NUT/M6	*	12	12								
16	1432-616-003-10	RUBBER,BUFFER	*	6	6								
17	1636-611-280-00	LOCK/STEP COMP	*	1	1								
18	1593-616-004-20	GROMMET/10X30X5	*	1	1								
19	8654-501-006-10	SPRING/CLIP	*	1	1								
20	V411-260-010-00	WASHER/M10	*	1	1								
21	V411-260-018-00	WASHER,PL/M18	*	1	1								
22	1636-611-012-00	HOOK/STEP	*	1	1								
23	1305-241-001-00	PIN,HAIR	*	1	1								
24	3610-631-002-00	HANGER,SUPPORT	*	1	1								
25	V211-360-801-60	BOLT,SEMS (SP)	*	1	1								
26	1720-611-002-10	MAT	*	1	1								
27	1636-611-011-00	RIVET/SCREW ASSY	*	10	10								

FIG. 60 HARNESS SYSTEM



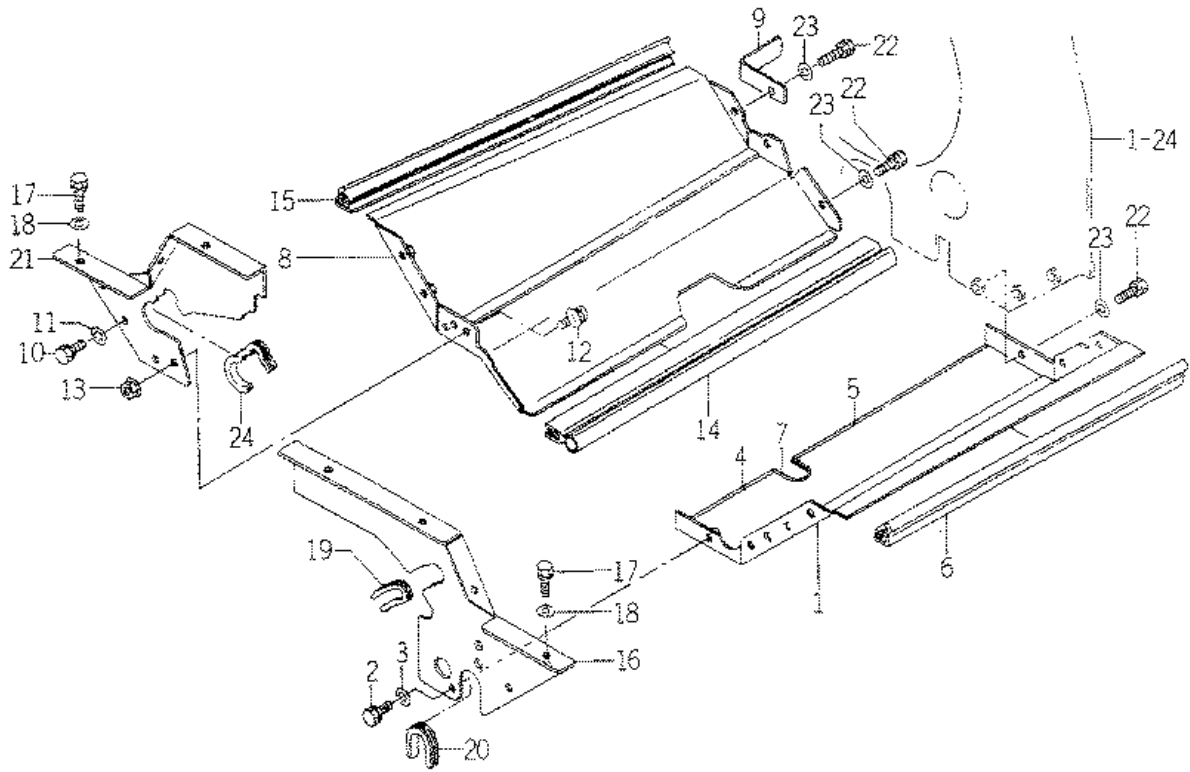
KEY	Part Code	Description	S P C	Type of Model				I T C	C O L	G R P	Remarks
				SF303	SF333						
1	1720-623-200-00	HARNESS/MAIN ASSY	*	1	1						
2	3650-262-202-00	DIODE/3.0A	*	1	1						
3	1575-623-009-00	FUSE/32V03A	*	1	1						
4	1575-623-010-00	FUSE/32V10A	*	2	2						
5	1593-623-203-00	FUSE/32V20A	*	1	1						
6	1593-623-503-00	CAP,FUSE BOX	*	1	1						
7	3737-172-011-00	CLAMP,HARNESS	*	1	1						
8	1342-402-006-00	BAND,WIRE/250	*	3	3						
9	1560-695-015-00	CLAMP	*	2	2						
10	V360-260-006-00	NUT/M6	*	1	1						
11	V363-260-008-00	NUT,LOCK/M8	*	1	1						
12	V201-260-801-60	BOLT/M 8X16	*	1	1						
13	V363-260-008-00	NUT,LOCK/M8	*	1	1						
14	1560-664-250-00	SWITCH/PUSH SET	*	1	1						
15	1560-664-252-00	NUT	*	1	1						
16	1560-664-253-00	BOOT	*	1	1						
17	1650-658-270-00	RELAY/4P ASSY	*	1	1						
18	1518-621-470-00	SWITCH,SAFETY ASSY	*	1	1						
19	V111-164-003-00	SCREW/M4X30	*	2	2						
20	V401-160-004-00	WASHER,SP/M 4	*	2	2						
21	V411-260-004-00	WASHER,PL/M 4	*	2	2						
22	3656-271-001-00	PLATE/I,13X40	*	1	1						
23	1720-623-300-00	HARNESS/ENGINE ASSY	*	1	1						
24	1614-690-202-00	FUSE/SLOWBLOW	*	2	2						
25	1425-621-004-00	CLAMP,HARNESS	*	1	1						
26	1342-402-006-00	BAND,WIRE/250	*	8	8						
27	3746-172-013-00	BAND,HARNESS	*	1	1						
28	1650-658-270-00	RELAY/4P ASSY	*	1	1						
29	V360-260-006-00	NUT/M6	*	1	1						
30	3656-271-290-10	HORN ASSY	*	1	1						

FIG. 61 HOOD SYSTEM



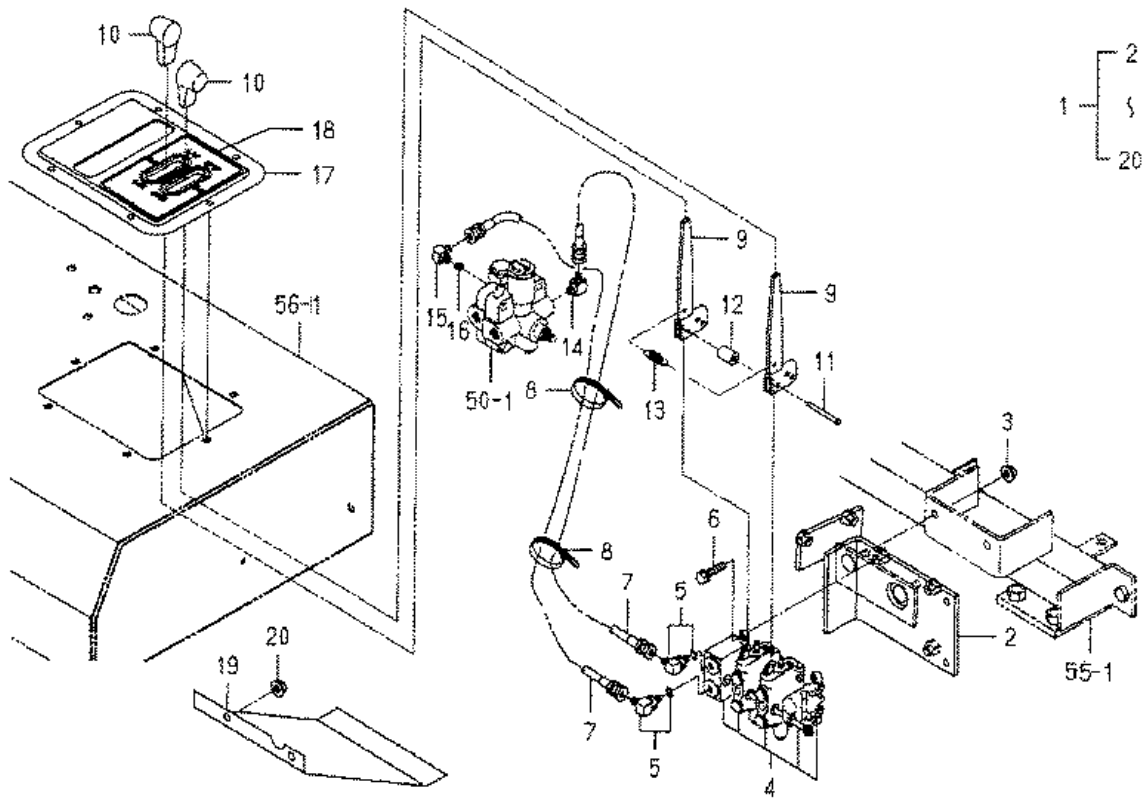
KEY	Part Code	Description	S P C	Type of Model				I T C	C O L	G R P	Remarks
				SF303	SF333						
1	1636-630-510-01	HOOD COMP	*	1	1				4L		
2	2502-601-003-00	BOLT/M08X20	*	2	2						
3	2502-601-005-00	NUT/CONICALWASHER	*	2	2						
4	1636-630-001-00	TRIM/1420	*	1	1						
5	1636-630-003-00	TRIM/1550	*	1	1						
6	1636-630-009-00	TRIM/970	*	1	1						
7	1636-630-006-00	INSULATOR/UPPER	*	1	1						
8	1636-630-007-00	INSULATOR/SIDE	*	2	2						
9	1636-630-330-10	PLATE/HOOK COMP	*	1	1						
10	V211-560-802-50	BOLT,SEMS/M8X25 7T	*	1	1						
11	1636-630-320-00	HOOK/HOOD COMP	*	1	1						
12	1636-630-015-00	SPRING/DISK/8	*	4	4						
13	V304-260-008-00	NUT/M 8	*	3	3						
14	1636-630-016-00	BOLT/M08X25	*	1	1						
15	1636-630-310-00	PLATE/CENTER COMP	*	1	1						
16	V211-260-802-00	BOLT,SEMS (S)	*	4	4						
17	1636-630-014-00	PLATE/I/95X120	*	1	1						
18	V211-260-801-60	BOLT,SEMS (S) M8X16	*	2	2						
19	V411-260-008-00	WASHER,PL/M 8	*	2	2						
20	1636-631-007-00	TRIM/85	*	1	1						
21	1720-630-450-00	PLATE/BASE COMP	*	1	1						
22	1636-630-005-00	TRIM/455	*	1	1						
23	2139-505-002-00	GROMMET	*	1	1						
24	4335-512-004-00	GROMMET/9	*	3	3						
25	4130-705-002-00	GROMMET/20	*	1	1						
26	V211-360-802-00	BOLT(SP) M8X20	*	6	6						

FIG. 62 UNDER COVER SYSTEM



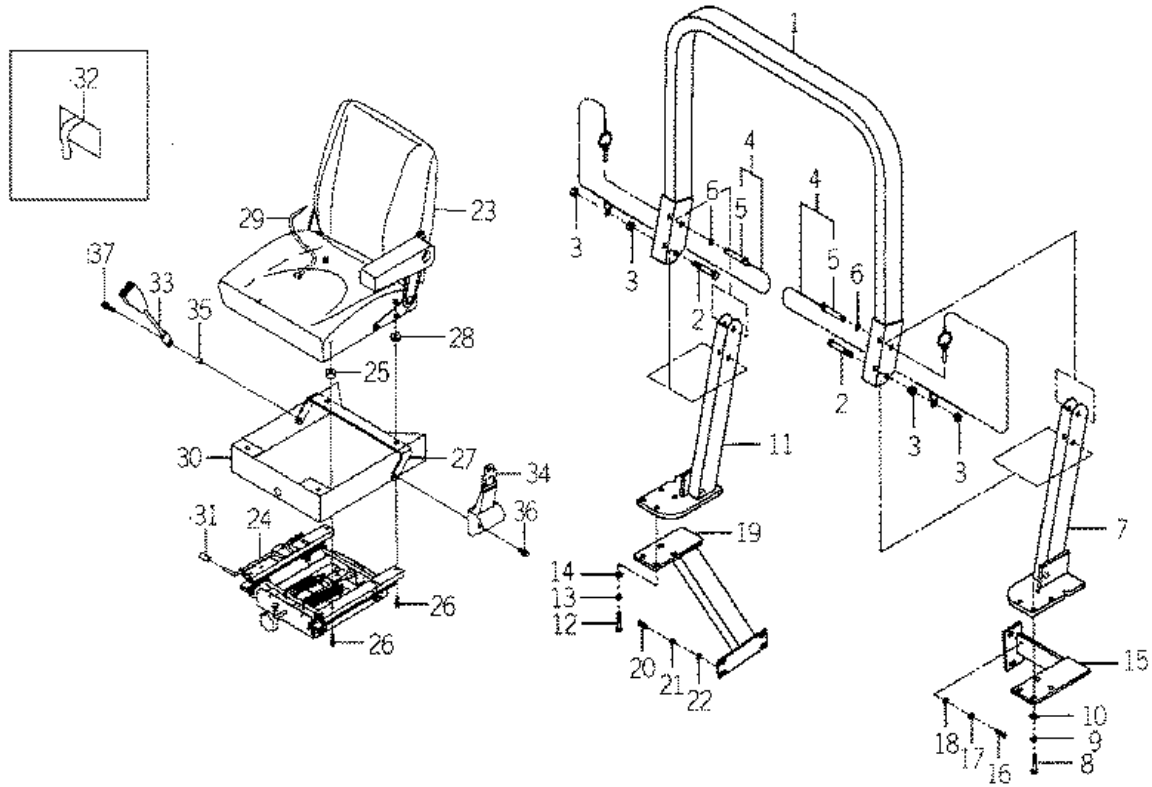
KEY	Part Code	Description	S P C	Type of Model						I T C	C O L	G R P	Remarks
				SF303	SF333								
1	1636-631-210-20	COVER/UNDER/LH COMP	*	1	1						7F		
2	V211-260-801-60	BOLT,SEMS (S) M8X16	*	3	3								
3	V411-260-008-00	WASHER,PL/M 8	*	3	3								
4	1636-631-013-00	TRIM/160	*	1	1								
5	1636-631-014-00	TRIM/320	*	1	1								
6	1636-631-003-00	TRIM/915	*	1	1								
7	1636-631-009-00	TRIM/70	*	1	1								
8	1636-631-220-10	COVER/UNDER/RH COMP	*	1	1						7F		
9	1636-631-015-10	PLATE/L/32X90	*	1	1								
10	V211-260-801-60	BOLT,SEMS (S) M8X16	*	3	3								
11	V411-260-008-00	WASHER,PL/M 8	*	3	3								
12	V210-360-602-00	BOLT/SP	*	1	1								
13	V360-260-006-00	NUT/M6	*	1	1								
14	1636-631-001-00	TRIM/510	*	1	1								
15	1636-631-003-00	TRIM/915	*	1	1								
16	1636-631-011-00	PLATE/REAR/LH	*	1	1								
17	V211-260-801-60	BOLT,SEMS (S) M8X16	*	7	7								
18	V411-260-008-00	WASHER,PL/M 8	*	7	7								
19	1636-631-006-00	TRIM/95	*	1	1								
20	1636-631-007-00	TRIM/85	*	1	1								
21	1636-631-250-00	PLATE/REAR/RH COMP	*	1	1								
22	V211-260-801-60	BOLT,SEMS (S) M8X16	*	6	6								
23	V411-260-008-00	WASHER,PL/M 8	*	6	6								
24	1636-631-008-00	TRIM/140	*	1	1								

FIG. 66 HYDRAULIC UNIT (OUT SIDE) SET (OPTION)



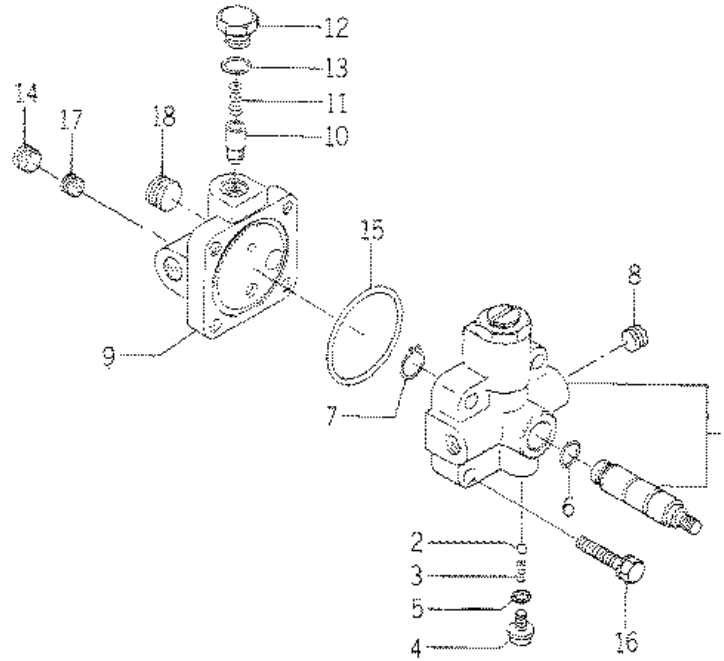
KEY	Part Code	Description	S P C	Type of Model						I T C	C O L	G R P	Remarks
				SF303	SF333								
1	1636-505-500-10	OIL/EXTRA SET	T	1	1								
2	1636-505-210-00	STAY/VALVE COMP	T	1	1								
3	V363-260-008-00	NUT,LOCK/M8	T	2	2								
4	1636-505-200-00	VALVE/SUB SET	T	1	1						071		
5	1689-502-250-00	ADAPTER/L/G3/8 ASSY	T	2	2								
6	V211-260-803-00	BOLT,SEMS	T	3	3								
7	1636-505-004-00	HOSE/1050	T	2	2								
8	1342-402-006-00	BAND,WIRE/250	T	2	2								
9	1636-505-220-00	LEVER/125 COMP	T	2	2								
10	1444-307-007-00	GRIP	T	2	2								
11	1636-505-005-00	PIN/05X45	T	1	1								
12	1636-505-006-00	COLLAR/06X14X19	T	1	1								
13	1636-505-007-00	SPRING/HE032	T	1	1								
14	2142-420-007-00	ADAPTER/90	T	1	1								
15	3768-185-015-20	ADAPTER/90	T	1	1								
16	K200-031-005-00	PLUG	T	1	1								
17	1636-611-009-00	COVER/GUIDE/B	T	1	1								
18	1636-902-001-00	LABEL/CONTROL	T	1	1								
19	1636-622-003-00	PLATE/Z/170X220	T	1	1								
20	V363-260-008-00	NUT,LOCK/M8	T	2	2								

FIG. 67 ROPS,SEAT SYSTEM (OPTION)



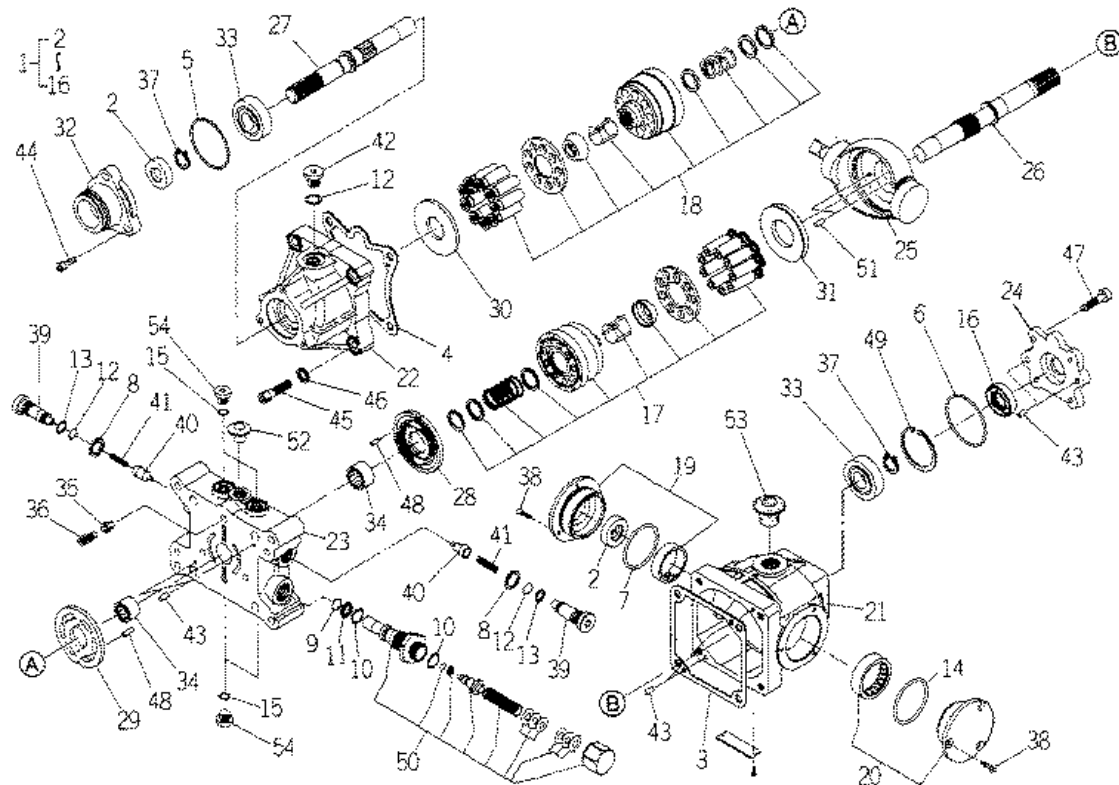
KEY	Part Code	Description	S P C	Type of Model				I T C	C O L	G R P	Remarks
				SF303	SF333						
1	1636-701-260-00	ROPS/CENTER COMP	T	1	1						
2	V201-361-609-00	BOLT	T	2	2						
3	V304-460-016-00	NUT/M16	T	4	4						
4	1636-701-250-00	PIN ASSY	T	2	2						
5	1636-701-251-00	PIN/19X94	T	2	2						
6	2139-505-002-00	GROMMET	T	2	2						
7	1636-701-210-00	ROPS/SIDE/LH COMP	T	1	1						
8	V201-361-206-00	BOLT	T	4	4						
9	V401-160-012-00	WASHER,SP/M12	T	4	4						
10	V411-260-012-00	WASHER /M12	T	4	4						
11	1636-701-220-00	ROPS/SIDE/RH COMP	T	1	1						
12	V201-361-206-00	BOLT	T	4	4						
13	V401-160-012-00	WASHER,SP/M12	T	4	4						
14	V411-260-012-00	WASHER /M12	T	4	4						
15	1636-701-230-10	BRACKET/LOWER/L COMP	T	1	1						
16	V201-361-003-00	BOLT/M10X30	T	2	2						
17	V401-160-010-00	WASHER,SP/M10	T	2	2						
18	V411-260-010-00	WASHER/M10	T	2	2						
19	1636-701-240-10	BRACKET/LOWER/R COMP	T	1	1						
20	V201-361-003-50	BOLT/M10X35	T	4	4						
21	V401-160-010-00	WASHER,SP/M10	T	4	4						
22	V411-260-010-00	WASHER/M10	T	4	4						
23	1636-613-510-00	SEAT ASSY	T	1	1						
24	1636-613-520-00	SUSPENSION/RAIL ASSY	T	1	1						
25	1719-611-501-00	SPACER/A	T	2	2						
26	V211-560-803-00	BOLT/M8X30	T	4	4						
27	1719-611-530-10	BRACKET/BELT COMP	T	1	1						
28	1719-611-502-10	BOOT/SUSPENSION ASSY	T	2	2						
29	1636-613-530-00	SEATSWITCH ASSY	T	1	1						
30	1636-613-540-00	COVER	T	1	1						

**FIG. 69 COMPONENT PARTS
FOR K216-012-000-00 ON Fig.50**



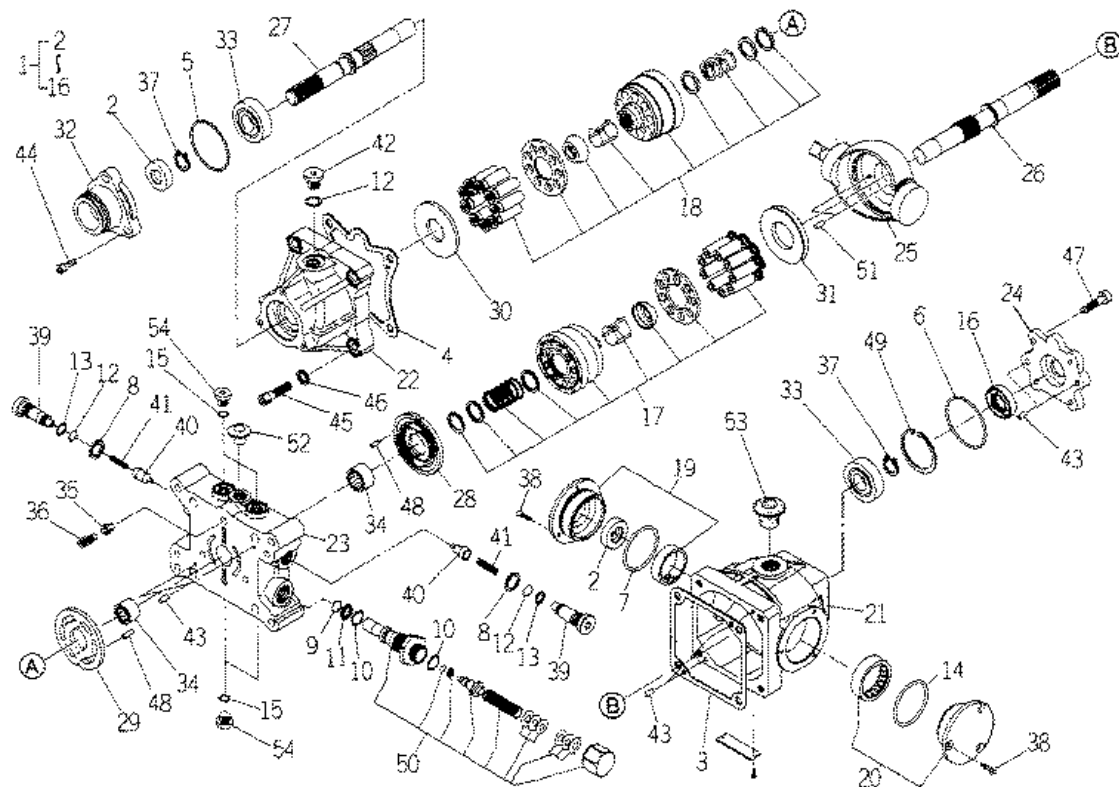
KEY	Part Code	Description	S P C	Type of Model					I T C	C O L	G R P	Remarks
				SF303	SF333							
1	K216-012-110-10	VALVE SUB SET	*	1	1							
2	V682-200-000-60	BALL	*	1	1							
3	K216-001-002-00	GUIDE/SPRING	*	1	1							
4	K216-008-002-00	SET BOLT	*	1	1							
5	V720-101-900-60	O-RING/P 6	*	2	2							
6	V720-102-401-20	O-RING/P12	*	1	1							
7	V704-140-015-00	RING,SNAP/15 C	*	1	1							
8	V780-140-000-4T	PLUG/SCREW/SEAL	*	1	1							
9	K216-012-002-00	COVER	*	1	1							
10	K216-012-003-00	POPET	*	1	1							
11	K211-008-010-00	SPRING/HCI9	*	1	1							
12	K211-001-008-00	PLUG	*	1	1							
13	V720-102-401-20	O-RING/P12	*	1	1							
14	V780-140-000-4T	PLUG/SCREW/SEAL	*	1	1							
15	V721-103-105-50	O-RING/G55	*	1	1							
16	V211-260-803-50	BOLT(S) M8X35	*	2	2							
17	K216-012-004-00	ORIFICE SCREW/3.5	*	1	1							
18	V780-140-000-6T	PLUG/SCREW/SEAL	*	1	1							

**FIG. 72 COMPONENT PARTS
 FOR 1720-202-200-20 ON Fig.15**



KEY	Part Code	Description	S P C	Type of Model					I T C	C O L	G R P	Remarks
				SF303	SF333							
1	1720-202-210-00	REPAIRKIT	*	1	1							
2	1622-202-517-00	SEAL/OIL	*	2	2							
3	1622-202-518-00	GASKET	*	1	1							
4	1622-202-519-00	GASKET	*	1	1							
5	V723-102-007-00	RING/O	*	1	1							
6	V723-102-007-10	RING/O	*	1	1							
7	V721-103-106-50	O-RING/G65	*	1	1							
8	1620-202-528-00	BONDEDSEAL	*	2	2							
9	V720-102-401-20	O-RING/P12	*	1	1							
10	V720-112-401-80	O-RING/P18	*	2	2							
11	V730-101-601-20	RING/BACKUP	*	1	1							
12	V720-102-401-40	O-RING/P14	*	3	3							
13	V730-101-801-40	RING/BACKUP	*	2	2							
14	V723-102-006-70	RING/O	*	1	1							
15	V720-112-401-10	RING/O	*	4	4							
16	1720-202-203-00	SEAL/OIL	*	1	1							
17	1720-202-220-00	CYLINDERBLOCK ASSY	*	1	1							
18	1622-202-550-20	CYLINDERBLOCK ASSY	*	1	1							
19	1622-202-560-00	COVER/A ASSY	*	1	1							
20	1622-202-570-00	COVER/B ASSY	*	1	1							
21	1622-202-501-00	CASE	*	1	1							
22	1720-202-205-00	CASE	*	1	1							
23	1622-202-503-00	PORTBLOCK	*	1	1							
24	1720-202-201-00	COVER	*	1	1							
25	1622-202-504-00	PLATE/SWASH	*	1	1							
26	1720-202-202-00	SHAFT	*	1	1							
27	1622-202-506-10	SHAFT	*	1	1							
28	1622-202-507-10	PLATE/VALVE	*	1	1							
29	1622-202-508-00	PLATE/VALVE	*	1	1							
30	1622-202-509-00	PLATE/THRUST	*	1	1							

**FIG. 72 COMPONENT PARTS
FOR 1720-202-200-20 ON Fig.15**



KEY	Part Code	Description	S P C	Type of Model				I T C	C O L	G R P	Remarks
				SF303	SF333						
31	1622-202-511-00	PLATE/THRUST	*	1	1						
32	1622-202-513-00	COVER	*	1	1						
33	1622-202-515-00	BEARING/BALL	*	2	2						
34	1622-202-516-00	BEARING/NEEDLE	*	2	2						
35	1620-202-517-00	VALVE	*	1	1						
36	1620-202-518-00	SPRING	*	1	1						
37	V704-140-025-00	RING,SNAP/25 C	*	2	2						
38	1720-202-204-00	SCREW/06X14	*	6	6						
39	1620-202-525-00	PLUG	*	2	2						
40	1622-202-521-00	POPPET	*	2	2						
41	1620-202-527-00	SPRING	*	2	2						
42	1620-202-536-00	PLUG	*	1	1						
43	1620-202-531-00	PIN	*	6	6						
44	V220-540-602-00	SCREW/SOCKET	*	3	3						
45	1620-202-519-00	BOLT	*	4	4						
46	V411-260-010-00	WASHER/M10	*	4	4						
47	V220-540-802-00	SCREW/SOCKET	*	4	4						
48	1620-202-524-00	PIN	*	2	2						
49	1622-202-524-00	RING/SNAP/INNER	*	1	1						
50	1620-202-529-00	VALVE/S/A	*	1	1						
51	1620-202-534-00	PIN	*	2	2						
52	1620-202-535-00	SHIPPINGPLUG	*	1	1						
53	1620-202-537-00	SHIPPINGPLUG	*	1	1						
54	1620-202-533-00	PLUG	*	4	4						

