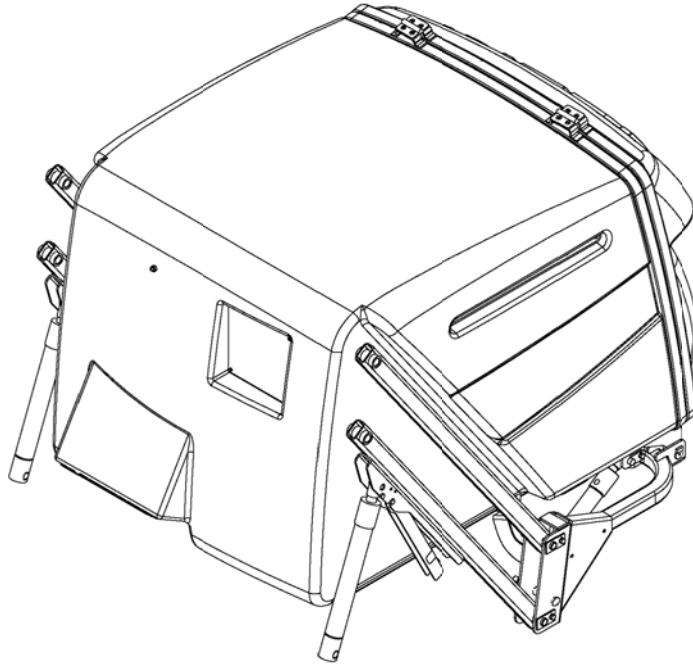




Parts Catalogue



COLLECTOR

SBC950F

SBC950F-HE4

8679-097-100-00

Printed in Japan October,2017

Directions for use of Parts Catalogue

1. Applicable model of machines

All component and option parts used for SBC950F Collector are listed in this parts catalogue.

NOTES: SBC950F-HE4..... FOR SF224F, 235F

2. Details of the Structure Table of Model

*** Structure Table of Model ***

	S F	S F									
M	3 F F F 3	F F F									
O	1 H H H 7	H H H									
D	0 U U U 0	U U U									
E	X X X	X X X									
L	W W W	W W W									
	E E G	E E G									
	4 6 E	4 6 E									
	4	4									
FIG.											
1	***	***									
2	*	*									
3		***									
4	***										
5		***									
6	***										
7	***	***									
8	*										

①

③

②

- ① FIG. : Parts structure of the machine is classified by its functions.
FIG. number corresponds to the number written at the top of the parts illustration.
- ② Model : Shows the name of the model.
- ③ Structure Table : Shows which functions are originally equipped or can be equipped afterwards for each machines
 - ` * ` Standard Parts
 - ` T ` Optional Parts
 - ` R ` Repair Parts (parts which can only be used for repairs)

3. Explanation for head paragraph

KEY	PART CODE	DESCRIPTION	S P C	TYPE OF MODEL						I T C	C O L	G R P	REMARKS
				SSM48M	SSM48F	SSM48G	SRM48M	SRM48F	SRM48G				
1	8595-211-001-20	CASE/UPPER	*	1 -229									
1A	8657-201-081-00	CASE/UPPER	*	1 -230-			1						
2	8595-211-002-10	CASE/LOWER	*	1			1						
3	V523-100-801-80	PIN	*	1			1						
4	V211-260-803-00	BOLT, SEMS	*	1			1						

- ① KEY shows the location of parts diagramed in the illustration.
- ② Parts numbers begin with `V` and `W` are standard parts of the market.
- ③ `LH` and `RH` on the parts name are described against the moving direction of the machine or are described on the condition how to install parts on the machines.
- ④ SPC : The following symbol classifies parts to be used for machines.
`*` means standard parts.
`T` shows that the parts can be installed as optional parts.
`R` shows that the parts can be used as applicable parts to replace originally equipped parts.
- ⑤ Upper column : QTY shows the number of parts to be used for one unit of machine.
`M` is indicated for parts supplied by a meter long.
`l` is indicated for parts supplied by liter.
`AR` is indicated for parts need to be adjusted or regulated.
- Lower column : serial number
-229 means serial number up to 229.
230- means serial number 230 and after.
- ⑥ ITC : Interchangeability
`1`...OLD ← NEW
New parts can be used in place of the old parts.
`2`...OLD → NEW
Old parts can be used in place of the new parts.

3 OLD →← NEW

Old parts and new parts can not be replaced each other.

⑦ COL : Color code

Color is signified with color code number for colored parts.

Please see the color list shown in the next page.

⑧ GRP : Parts shown in this column can be replaced by SET parts.

Example : Parts marked ① can be replaced by parts marked ②, and ④ for ③, so the rest follow in the same alphabetical order.

⑨ Remarks

* Other maker's part code number is shown in this column.

* When Fig. No. is shown in the Remark column of SET parts or ASSY parts, each of their component parts are listed in said Fig. No.

4. Color :

The following colors are used color parts.

COLOR CODE	COLOR	SPRAY TYPE PARTS CODE	PAINTS 4K DRUM PARTS CODE	PAINTS 16K DRUM PARTS CODE
0 P	AGCO RED	1300-999-001-20	_____	_____
4 L	NEO BLUE	1300-985-001-20	1300-985-003-00	1300-985-004-00
7 F	MIRROR BLACK	1300-954-001-20	1300-954-003-00	1300-954-004-00

NOTE : Color code is signified only for the parts assigned by the maker as color parts.

5. Serial Numbers :

For chassies serial number is shown on the LABEL.

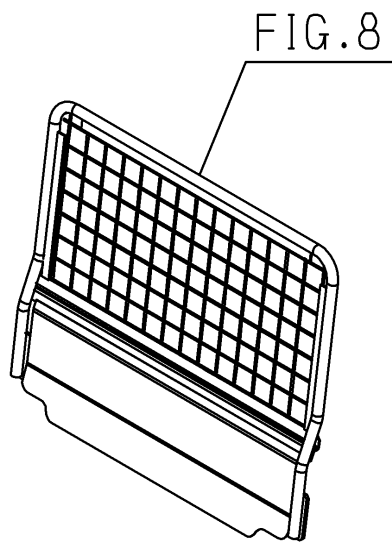
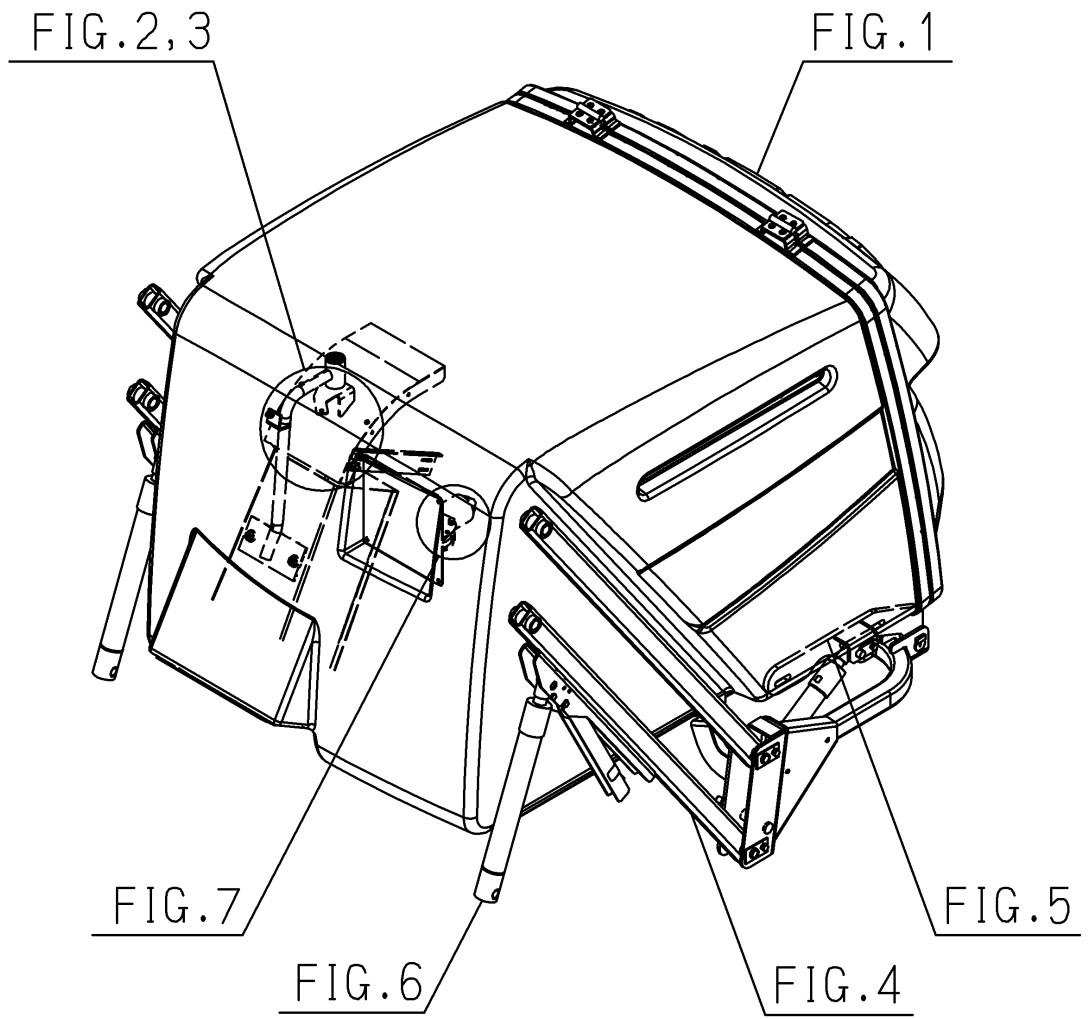
Please see



6. Parts Order

- 1) When you order parts, please make sure of correct numbers.
- 2) When substitute parts is available, the part number ordered will be automatically turned to a new part number.
- 3) Please be sure to use “ISEKI GENUINE PARTS” .

Any other similar parts other than ISEKI parts when used may cause a trouble that makes us unable to repair or guarantee the warrant.

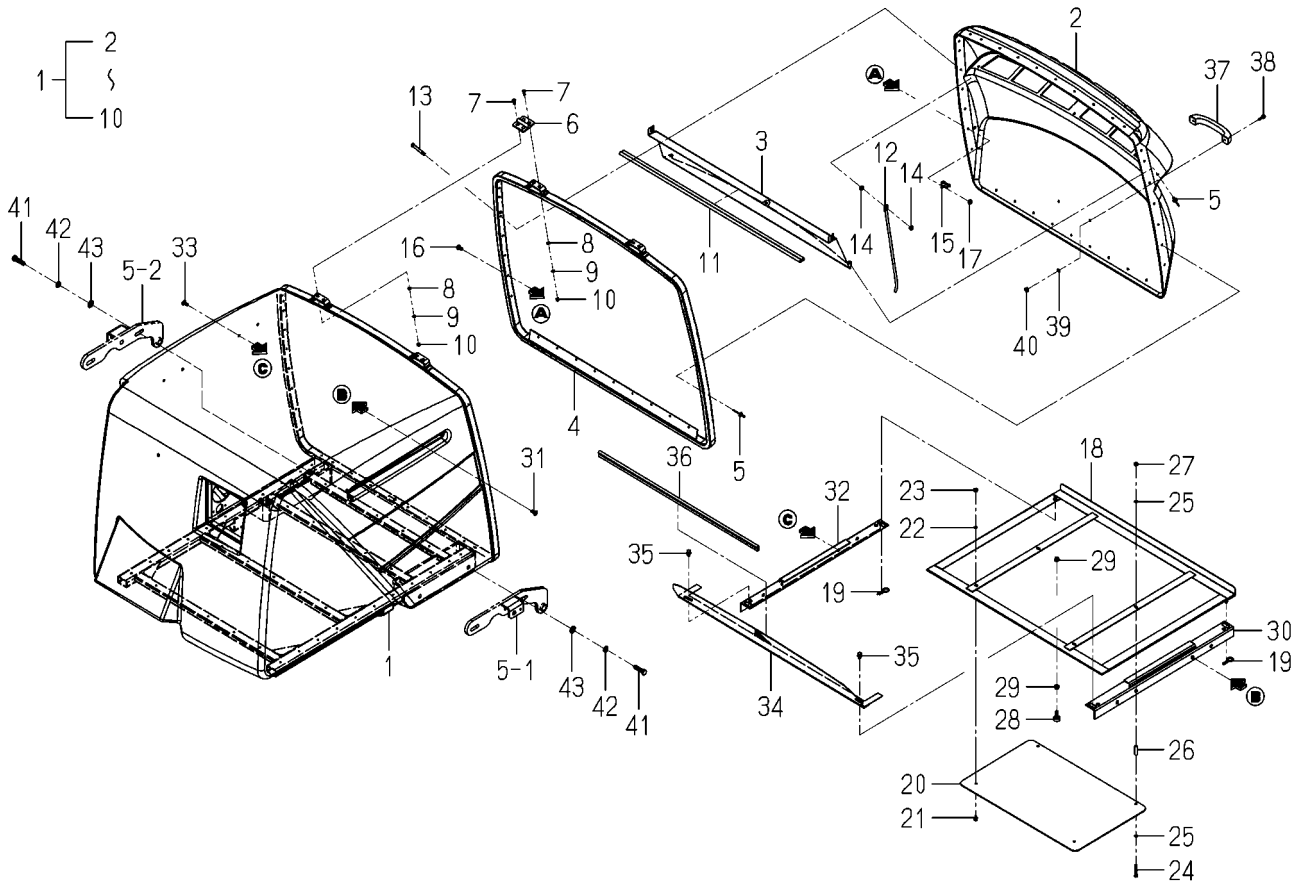


Contents

SBC950F

CONTAINER SYSTEM.....	Fig. 1
CHUTE(CONTAINER)SYSTEM.....	Fig. 2
SWING SYSTEM.....	Fig. 3
LINK SYSTEM.....	Fig. 4
BASE(CONTAINER)SYSTEM.....	Fig. 5
CYLINDER SYSTEM.....	Fig. 6
SENSOR,MOTOR SYSTEM.....	Fig. 7
GUARD(CONTAINER)SYSTEM.....	Fig. 8
ORNAMENT&LABEL.....	Fig. 9
LABEL(CE).....	Fig. 10

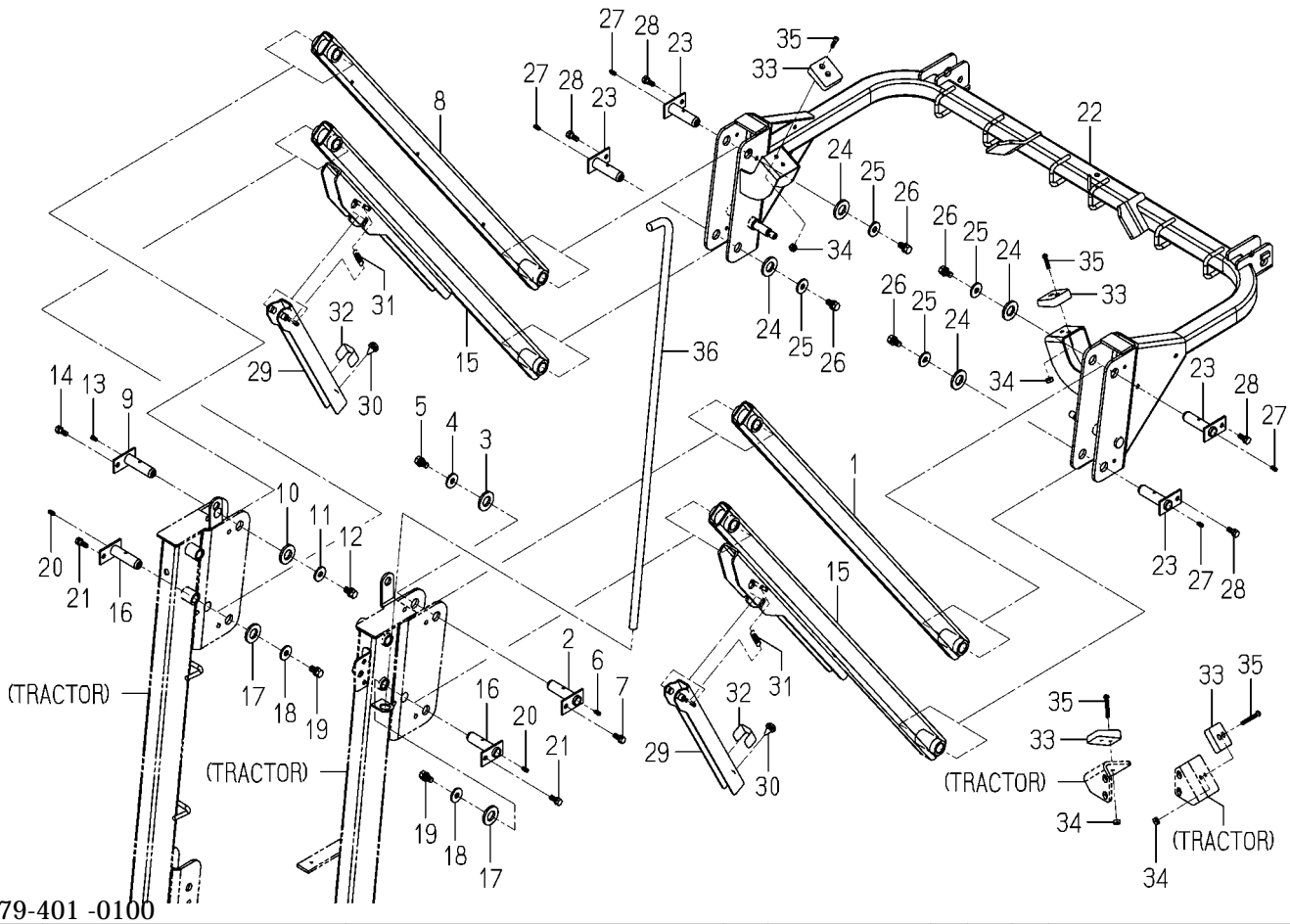
FIG. 1 CONTAINER SYSTEM



8679-301 -0100

KEY	PART CODE	DESCRIPTION	S P C	TYPE OF MODEL	I T C	C O L	G R P	REMARKS
				SBC950F HE4				
1	8679-301-200-00	CONTAINER/950 ASSY	*	1				
2	8679-301-202-00	CONTAINER/DOOR	*	1				
3	8679-301-203-00	PLATE/DOOR	*	1				
4	8679-301-230-00	FRAME/DOOR/B COMP	*	1				
5	8676-301-015-00	RIVET/POP	*	115				
6	8676-301-016-00	HINGE	*	2				
7	8676-301-018-00	SCREW/SOCKET/FLAT	*	8				
8	V411-260-006-00	WASHER,PL/M6	*	8				
9	V401-160-006-00	WASHER,SP/M6	*	8				
10	V301-260-006-00	NUT/M6	*	8				
11	8676-301-031-00	INSULATOR/955	*	1				
12	8676-301-008-00	BAR/STOPPER	*	1				
13	W201-260-805-00	BOLT/M 8X50	*	1				
14	1719-312-001-00	U-NUT	*	2				
15	3610-631-002-00	HANGER,SUPPORT	*	1				
16	3824-232-021-00	SCREW/TRUSS/M08X20	*	1				
17	1719-312-001-00	U-NUT	*	1				
18	8679-301-510-00	NET/PARTITION COMP	*	1				
19	7957-501-004-00	PIN,HAIR	*	2				
20	8679-301-007-00	PLATE/UPPER	*	1				
21	V210-360-601-60	BOLT,SP/M6X16	*	2				
22	V411-260-006-00	WASHER,PL/M6	*	2				
23	1118-606-002-10	U-NUT	*	2				
24	V200-260-605-00	BOLT/M6X50	*	2				
25	V411-260-006-00	WASHER,PL/M6	*	4				
26	1636-241-215-00	COLLAR/07X11X36	*	2				
27	1118-606-002-10	U-NUT	*	2				
28	1421-602-005-10	CUSHION,B/ RUBBER	*	1				
29	V362-260-008-00	NUT/WASHER/M8	*	2				
30	8679-301-520-10	STAY/NET COMP	*	1				

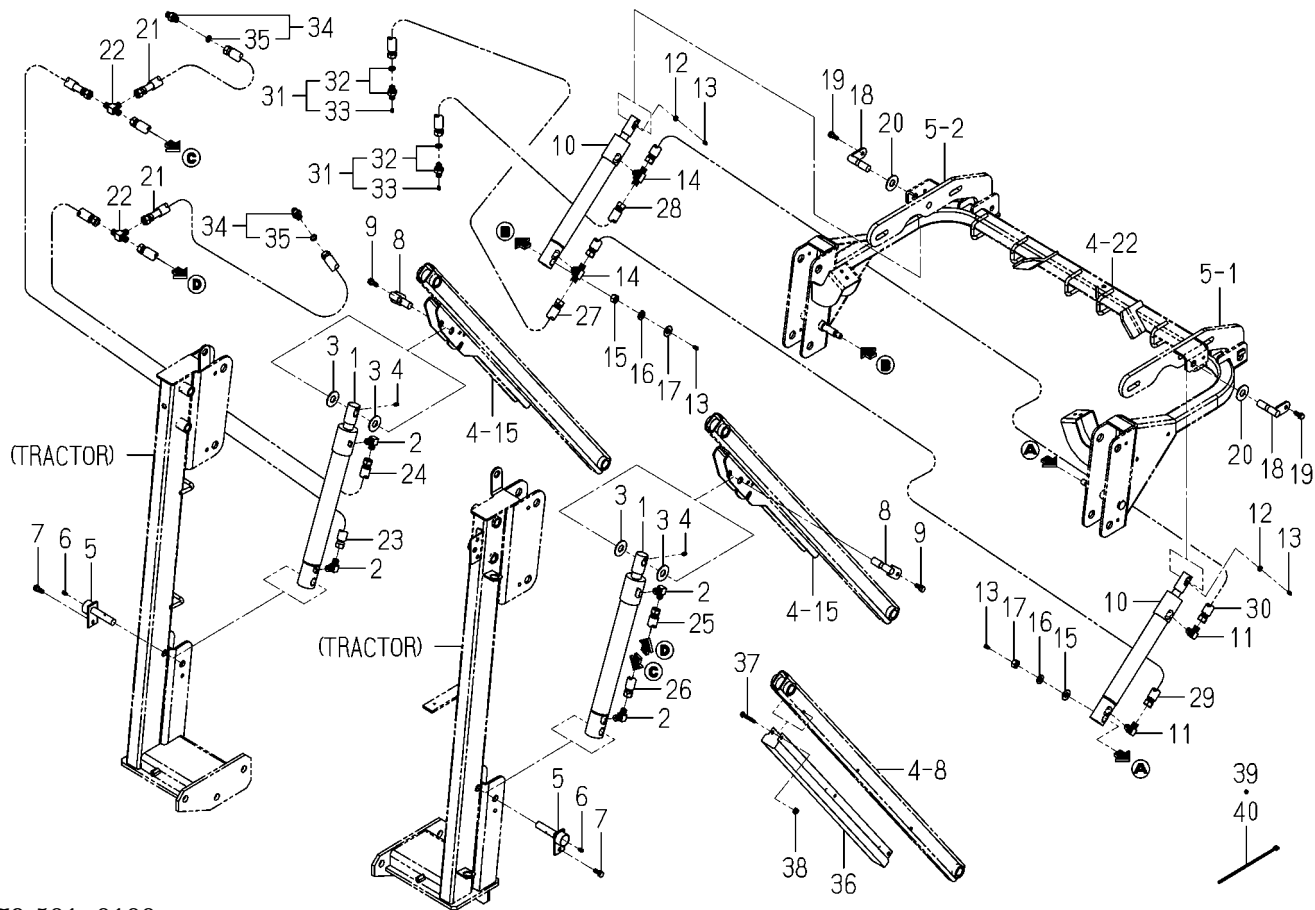
FIG. 4 LINK SYSTEM



8679-401-0100

KEY	PART CODE	DESCRIPTION	S P C	TYPE OF MODEL	I T C	C O L	G R P	REMARKS
				SBC950F HE4				
1	8679-401-210-00	LINK/LIFT/UPPER/LH	*	1				
2	8676-401-330-00	PIN/LINK COMP	*	1				
3	1719-640-007-00	WASHER/21X40X4.5	*	1				
4	3659-170-003-00	WASHER/11X30X3	*	1				
5	V211-561-002-00	BOLT,S/M10X20/7T	*	1				
6	V760-150-000-00	NIPPLE,GREASE	*	1				
7	V211-560-802-00	BOLT,S/M8X20/7T	*	1				
8	8679-401-220-00	LINK/LIFT/UPPER/RH	*	1				
9	8676-401-330-00	PIN/LINK COMP	*	1				
10	1719-640-007-00	WASHER/21X40X4.5	*	1				
11	3659-170-003-00	WASHER/11X30X3	*	1				
12	V211-561-002-00	BOLT,S/M10X20/7T	*	1				
13	V760-150-000-00	NIPPLE,GREASE	*	1				
14	V211-560-802-00	BOLT,S/M8X20/7T	*	1				
15	8679-401-230-00	LINK/LIFT/LOWER COMP	*	2				
16	8676-401-330-00	PIN/LINK COMP	*	2				
17	1719-640-007-00	WASHER/21X40X4.5	*	2				
18	3659-170-003-00	WASHER/11X30X3	*	2				
19	V211-561-002-00	BOLT,S/M10X20/7T	*	2				
20	V760-150-000-00	NIPPLE,GREASE	*	2				
21	V211-560-802-00	BOLT,S/M8X20/7T	*	2				
22	8679-401-250-00	BASE/CONTAINER COMP	*	1				
23	8676-401-330-00	PIN/LINK COMP	*	4				
24	1719-640-007-00	WASHER/21X40X4.5	*	4				
25	3659-170-003-00	WASHER/11X30X3	*	4				
26	V211-561-002-00	BOLT,S/M10X20/7T	*	4				
27	V760-150-000-00	NIPPLE,GREASE	*	4				
28	V211-560-802-00	BOLT,S/M8X20/7T	*	4				
29	8676-401-280-10	STOPPER COMP	*	2				
30	1432-616-002-00	RUBBER,CUSHION	*	2				

FIG. 6 CYLINDER SYSTEM



8679-501-0100

KEY	PART CODE	DESCRIPTION	S P C	TYPE OF MODEL		I T C	C O L	G R P	REMARKS
				SBC950F	HE4				
1	8676-501-710-00	CYLINDER/LIFT ASSY	*	2					
2	3768-185-022-10	ADAPTER/90DEG/PUMP	*	4					
3	8676-501-003-00	WASHER/17X40X02	*	4					
4	V760-150-000-00	NIPPLE,GREASE	*	2					
5	8676-501-240-00	PIN/16X81 COMP	*	2					
6	V760-150-000-00	NIPPLE,GREASE	*	2					
7	V211-560-802-00	BOLT,S/M8X20/7T	*	2					
8	8676-501-250-00	PIN/16X55 COMP	*	2					
9	V211-560-802-00	BOLT,S/M8X20/7T	*	2					
10	8679-501-310-00	CYLINDER/DUMP ASSY	*	2					
11	3768-185-022-10	ADAPTER/90DEG/PUMP	*	2					
12	V401-160-006-00	WASHER,SP/M6	*	2					
13	V760-150-000-00	NIPPLE,GREASE	*	4					
14	8676-501-001-00	ADAPTER/T/R1/4	*	2					
15	V411-260-012-00	WASHER,PL/M12	*	2					
16	V401-160-012-00	WASHER,SP/M12	*	2					
17	V304-260-012-00	NUT/M12	*	2					
18	8676-501-250-00	PIN/16X55 COMP	*	2					
19	V211-560-802-00	BOLT,S/M8X20/7T	*	2					
20	8676-501-003-00	WASHER/17X40X02	*	2					
21	8679-501-410-00	HOSE/HYDRO/350 ASSY	*	2					
22	8664-555-003-00	ADAPTER/T	*	2					
23	8679-501-410-00	HOSE/HYDRO/350 ASSY	*	1					
24	8676-501-440-00	HOSE/HYDRO/700 ASSY	*	1					
25	8676-501-420-00	HOSE/HYDRO/1300 ASSY	*	1					
26	8676-501-430-00	HOSE/HYDRO/1050 ASSY	*	1					
27	8664-555-860-00	HOSE/HYDRO/2250 ASSY	*	1					
28	8676-501-410-00	HOSE/HYDRO/2325 ASSY	*	1					
29	8676-501-270-00	HOSE/HYDRO/1925 ASSY	*	1					
30	8676-501-420-00	HOSE/HYDRO/1300 ASSY	*	1					

Numerical Index

8679-097-100-00

Part Code	Fig. Key	Part Code	Fig. Key	Part Code	Fig. Key
1118-606-002-10	1 23	7957-501-004-00	1 19	8676-501-710-00	6 1
	1 27	8595-901-005-00	9 1	8676-601-310-00	7 22
	1 40	8595-901-007-00	9 3	8676-601-320-00	7 1
	3 14	8597-301-002-00	2 5	8676-601-322-00	7 2
	4 34	8654-501-043-00	3 7	8679-301-007-00	1 20
1342-402-006-00	6 40	8664-105-001-10	4 36	8679-301-200-00	1 1
	7 13	8664-555-003-00	6 22	8679-301-202-00	1 2
1376-402-003-00	6 39	8664-555-270-00	6 31	8679-301-203-00	1 3
	7 12	8664-555-860-00	6 27	8679-301-230-00	1 4
1421-602-005-10	1 28	8664-955-001-00	9 4	8679-301-510-00	1 18
1426-621-018-00	4 31	8676-301-008-00	1 12	8679-301-520-10	1 30
1432-616-002-00	4 30	8676-301-015-00	1 5		1 32
1518-621-118-00	7 8	8676-301-016-00	1 6	8679-301-540-00	1 34
1560-666-004-00	7 11	8676-301-018-00	1 7	8679-303-001-00	2 2
1593-901-015-00	9 2	8676-301-031-00	1 11	8679-303-210-00	2 1
1636-241-215-00	1 26	8676-304-004-00	3 12	8679-303-220-00	2 4
1719-266-051-00	3 6	8676-304-005-10	3 13	8679-304-001-00	3 3
1719-312-001-00	1 14	8676-304-300-20	3 5	8679-304-220-00	3 1
	1 17	8676-304-310-00	3 8	8679-401-210-00	4 1
	2 8	8676-304-320-00	3 9	8679-401-220-00	4 8
	3 2	8676-401-009-00	4 32	8679-401-230-00	4 15
	5 9	8676-401-013-00	4 33	8679-401-250-00	4 22
1719-640-007-00	4 3	8676-401-280-10	4 29	8679-402-210-00	5 1
	4 10	8676-401-330-00	4 2	8679-402-230-00	5 2
	4 17		4 9	8679-402-260-00	5 10
	4 24		4 16	8679-402-270-00	5 15
1725-611-087-00	2 3		4 23	8679-501-310-00	6 10
1742-601-003-00	1 36	8676-402-005-00	5 3	8679-501-410-00	6 21
1785-511-002-00	3 16	8676-402-007-10	5 17		6 23
2183-880-009-00	5 8	8676-402-008-10	5 19	8679-601-002-00	7 19
2500-901-027-00	10 1	8676-402-009-00	5 22	8679-601-210-00	7 14
3610-631-002-00	1 15	8676-402-250-10	5 7	8679-607-210-00	8 1
3659-170-003-00	4 4	8676-501-001-00	6 14	8679-901-001-00	9 5
	4 11	8676-501-003-00	6 3	8679-901-002-00	9 6
	4 18		6 20	K200-257-002-00	5 13
	4 25	8676-501-007-10	6 36	K211-004-014-00	6 33
3670-236-003-00	1 37	8676-501-240-00	6 5	V111-164-004-00	7 3
3737-172-011-00	7 10	8676-501-250-00	6 8	V111-165-001-60	7 7
3768-185-022-10	6 2		6 18	V111-166-002-50	4 35
	6 11	8676-501-270-00	6 29	V120-366-002-50	1 38
3822-338-310-00	7 17	8676-501-410-00	6 28	V200-260-604-00	6 37
3824-232-021-00	1 16	8676-501-420-00	6 25	V200-260-605-00	1 24
	1 31		6 30	V201-361-204-50	1 41
	1 33	8676-501-430-00	6 26	V210-260-601-60	7 18
3829-387-410-00	6 34	8676-501-440-00	6 24	V210-360-601-60	1 21

Numerical Index

8679-097-100-00

Part Code	Fig. Key	Part Code	Fig. Key	Part Code	Fig. Key
V210-360-601-60	7 15	V411-260-012-00	1 43		
V210-360-602-50	5 16		6 15		
V211-360-801-60	1 35	V411-260-014-00	2 6		
V211-360-802-50	5 18	V500-162-502-00	5 21		
V211-560-802-00	4 7	V500-163-002-00	5 12		
	4 14	V600-150-620-00	2 10		
	4 21	V705-140-017-00	3 11		
	4 28	V705-140-030-00	2 11		
	6 7	V720-112-401-10	6 32		
	6 9		6 35		
	6 19	V760-150-000-00	4 6		
V211-561-002-00	4 5		4 13		
	4 12		4 20		
	4 19		4 27		
	4 26		5 4		
	8 2		6 4		
V301-260-004-00	7 4		6 6		
V301-260-006-00	1 10		6 13		
	3 10	W201-260-805-00	1 13		
V304-260-008-00	5 14				
V304-260-012-00	5 6				
	6 17				
V335-260-008-00	7 20				
V360-260-006-00	6 38				
V362-260-008-00	1 29				
	3 4				
V363-260-010-00	2 7				
V401-160-004-00	7 6				
V401-160-006-00	1 9				
	6 12				
V401-160-008-00	7 21				
V401-160-012-00	1 42				
	5 5				
	6 16				
V411-260-004-00	7 5				
V411-260-005-00	7 9				
V411-260-006-00	1 8				
	1 22				
	1 25				
	1 39				
	2 9				
	3 15				
V411-260-008-00	5 20				
	7 16				
V411-260-010-00	5 11				

Alphabetical Index

8679-097-100-00

Description	Fig. Key	Description	Fig. Key	Description	Fig. Key
ADAPTER/90DEG/PUMP	6 2	CUSHION, B/ RUBBER	1 28	NUT/MB	5 14
	6 11	CYLINDER/DUMP ASSY	6 10		7 20
ADAPTER/ORIFICE ASSY	6 31	CYLINDER/LIFT ASSY	6 1	NUT/WASHER/M10	2 7
ADAPTER/T	6 22	FRAME/CHUTE COMP	2 4	NUT/WASHER/MB	6 38
ADAPTER/T/R1/4	6 14	FRAME/DOOR/B COMP	1 4	NUT/WASHER/MB	1 29
ADPTEr/G1/4. 1/4	6 34	GRIP	1 37		3 4
BAND	7 11	GUARD COMP	8 1	0- RING/1B, P11	6 32
BAND, WIRE/140	6 39	HANGER, SUPPORT	1 15		6 35
	7 12	HARNESS/COLLECTOR	7 22	ORNAMENT/COLLECTOR/L	9 5
BAND, WIRE/250	6 40	HINGE	1 6	ORNAMENT/COLLECTOR/R	9 6
	7 13	HOSE/HYDRO/1050 ASSY	6 26	PIN, HAIR	1 19
BAR	4 36	HOSE/HYDRO/1300 ASSY	6 25	PIN, SPLIT/2. 5X20	5 21
BAR/STOPPER	1 12		6 30	PIN, SPLIT/3X20	5 12
BASE/CONTAINER COMP	4 22	HOSE/HYDRO/1925 ASSY	6 29	PIN/16X55 COMP	6 8
BEARING, RB/6200SS	2 10	HOSE/HYDRO/2250 ASSY	6 27		6 18
BLOT/M10X25	2 5	HOSE/HYDRO/2325 ASSY	6 28	PIN/16X81 COMP	6 5
BOLT, S/M10X20/7T	4 5	HOSE/HYDRO/350 ASSY	6 21	PIN/20X36	5 3
	4 12		6 23	PIN/LINK COMP	4 2
	4 19	HOSE/HYDRO/700 ASSY	6 24		4 9
	4 26	INSULATOR/955	1 11		4 16
	8 2	JOINT/BALL/M06	3 6		4 23
BOLT, S/M6X16	7 18	LABEL/CAUTION/D	9 4	PLATE/BASE COMP	5 7
BOLT, S/M6X20/7T	4 7	LABEL/CE	10 1	PLATE/DOOR	1 3
	4 14	LABEL/DANGER/DISCHAR	9 1	PLATE/GUIDE COMP	3 1
	4 21	LABEL/MAINTENANCE	9 2	PLATE/HOOK	5 17
	4 28	LABEL/WARNING/HOT	9 3	PLATE/I/19X220	2 2
	6 7	LINK/LIFT/LOWER COMP	4 15	PLATE/IR/22X65	5 19
	6 9	LINK/LIFT/UPPER/LH	4 1	PLATE/LOCK COMP	5 10
	6 19	LINK/LIFT/UPPER/RH	4 8	PLATE/RELEASE COMP	5 15
BOLT, SP/M6X16	1 21	MOTOR	7 17	PLATE/SWING	7 19
	7 15	NET/FRONT COMP	1 34	PLATE/SWITCH	3 3
BOLT, SP/M6X25	5 16	NET/PARTITION COMP	1 18	PLATE/UPPER	1 20
BOLT, SP/M6X16	1 35	NIPPLE, GREASE	4 6	RING, SNAP/17 C	3 11
BOLT, SP/M6X25	5 18		4 13	RING, SNAP/30 C	2 11
BOLT/M 8X50	1 13		4 20	RIVET/POP	1 5
BOLT/M12X45/7T	1 41		4 27	ROD ASSY	3 5
BOLT/M6X40	6 37		5 4	ROD(SWING) COMP	3 8
BOLT/M6X50	1 24		6 4	ROD/06X100 COMP	3 9
BOOT/JOY	3 16		6 6	RUBBER, CUSHION	4 30
CHUTE/CONTAINER COMP	2 1		6 13	RUBBER/STOPPER	4 32
CLAMP, HARNESS	7 10	NUT/M2	5 6	SCREW, ORIFICE	6 33
COLLAR/07X11X36	1 26		6 17	SCREW, SP/M6X25	1 38
CONTAINER/950 ASSY	1 1	NUT/M4	7 4	SCREW/M6X40	7 3
CONTAINER/DOOR	1 2	NUT/M6	1 10	SCREW/M6X16	7 7
COVER/HOSE	6 36		3 10	SCREW/M6X25	4 35

Alphabetical Index

8679-097-100-00

Description	Fig. Key	Description	Fig. Key	Description	Fig. Key
SCREW/MB	5 8	WASHER, PL/MB	7 16		
SCREW/SOCKET/FLAT	1 7	WASHER, SP/MI2	1 42		
SCREW/SOCKET/MBX60	5 13		5 5		
SCREW/TRUSS/MD8X20	1 16		6 16		
	1 31	WASHER, SP/MI	7 6		
	1 33	WASHER, SP/MB	1 9		
SPRING, TENSION	4 31		6 12		
SPRING/HCO58	3 7	WASHER, SP/MB	7 21		
SPRING/HT020	5 22	WASHER/06X16X02	3 12		
STAY/DUMP/LH COMP	5 1	WASHER/11X30X3	4 4		
STAY/DUMP/RH COMP	5 2		4 11		
STAY/MOTOR COMP	7 14		4 18		
STAY/NET COMP	1 30		4 25		
	1 32	WASHER/17X40X02	6 3		
STOPPER COMP	4 29		6 20		
STOPPER/C	4 33	WASHER/21X40X4.5	4 3		
SWITCH	7 2		4 10		
SWITCH ASSY	7 1		4 17		
TRIM/840	1 36		4 24		
TUBE/160	3 13				
U-NUT	1 14				
	1 17				
	1 23				
	1 27				
	1 40				
	2 8				
	3 2				
	3 14				
	4 34				
	5 9				
U-NUT/MD5	7 8				
U-NUT/MOX1.5	2 3				
WASHER, PL/M10	5 11				
WASHER, PL/M12	1 43				
	6 15				
WASHER, PL/M14	2 6				
WASHER, PL/M4	7 5				
WASHER, PL/M5	7 9				
WASHER, PL/M6	1 8				
	1 22				
	1 25				
	1 39				
	2 9				
	3 15				
WASHER, PL/MB	5 20				